

Annex 2: External photographs of EUT to
PARTIAL TEST REPORT
No.: 18-1-0210201T03a

According to:
FCC Regulations
Part 15.107, Part 15.109, Part15.247

ISED-Regulations
RSS-Gen, Issue 5, RSS-247, Issue 2

for

Miele & Cie. KG

Wireless Food Probe System
(Host: HR1956-2)

Contains FCC ID: SSVNAEPI02
Contains ISED: 5669B-NAEPI02





Laboratory Accreditation and Listings	
  <p>Deutsche Akkreditierungsstelle D-PL-12047-01-01 D-PL-12047-01-03 D-PL-12047-01-04</p> <p>Accredited EMC-Test Laboratory</p>	
 <p>WiFi ALLIANCE</p> <p>AUTHORIZED RF LABORATORY</p>	 <p>ctia AuthorizedTM Test Lab</p> <p>Lab Code: 20011130-00</p>
accredited according to DIN EN ISO/IEC 17025	
<p>CETECOM GmbH Laboratory Radio Communications & Electromagnetic Compatibility Im Teelbruch 116 • 45219 Essen • Germany Registered in Essen, Germany, Reg. No.: HRB Essen 8984 Tel.: + 49 (0) 20 54 / 95 19-954 • Fax: + 49 (0) 20 54 / 95 19-964 E-mail: info@cetecom.com • Internet: www.cetecom.com</p>	

TABLE OF CONTENTS:

1. EXTERNAL PHOTOGRAPHS.....	3
1.1. Equipment Under Test (EUT)-Radiated Test Sample	3
1.2. Equipment Under Test (EUT)- Test Sample.....	4
1.3. Auxiliary Equipments (AEs)	8

1. External photographs

1.1. Equipment Under Test (EUT)-Radiated Test Sample

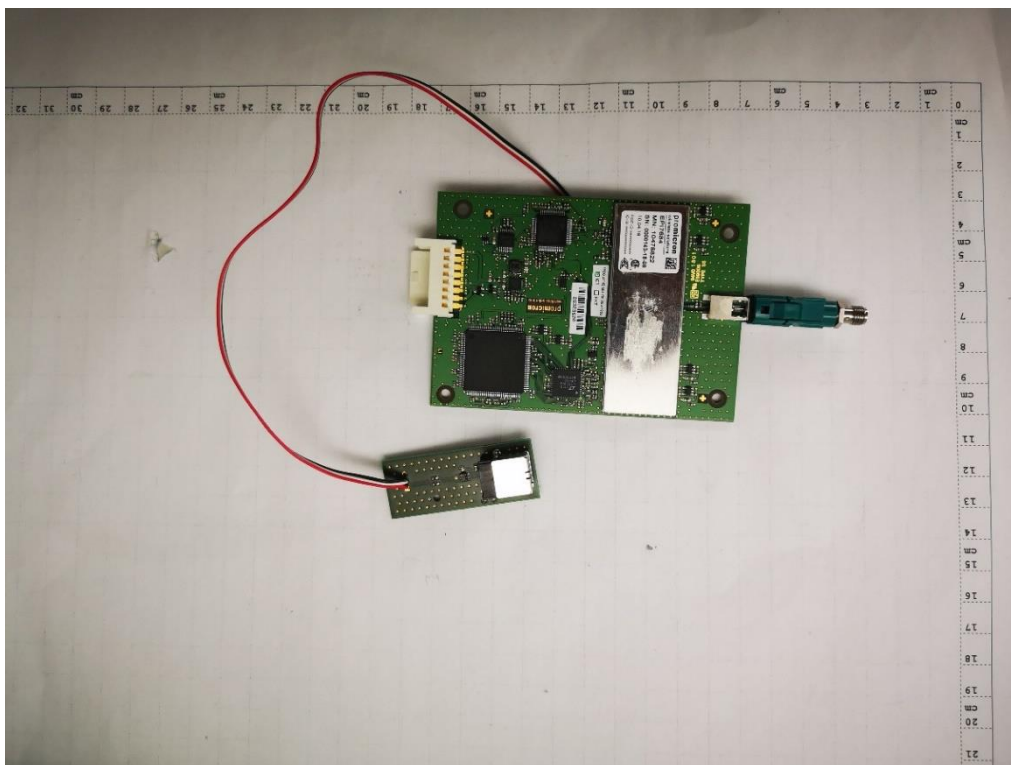


Photograph 1:Radiated Test Sample front View

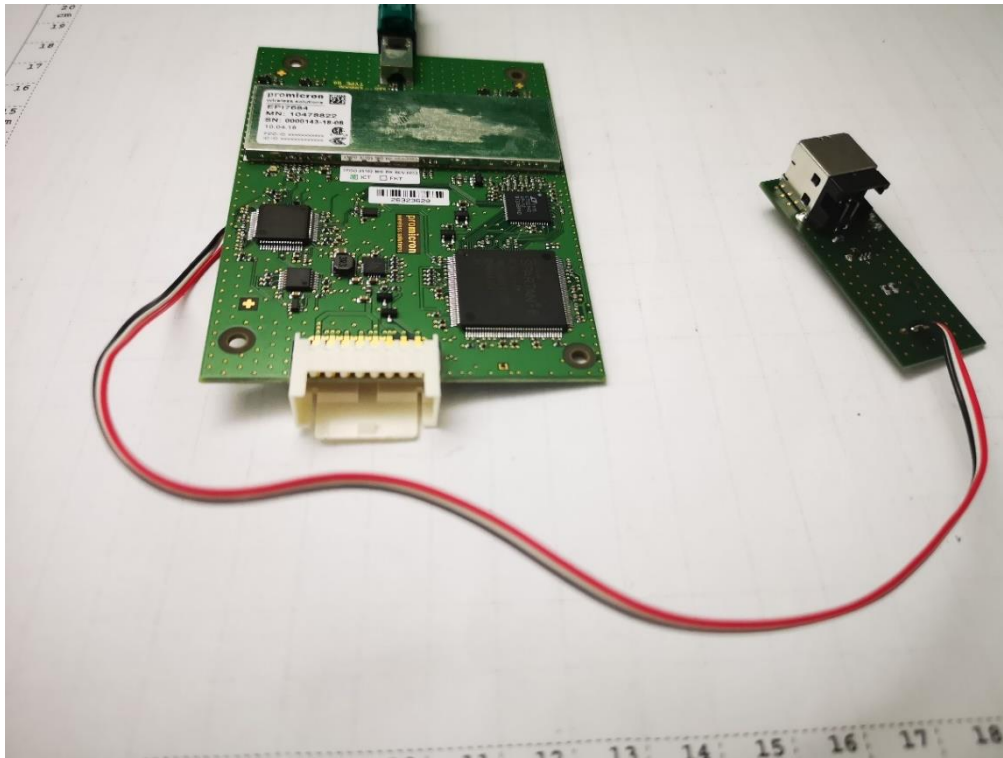
1.2. Equipment Under Test (EUT)- Test Sample



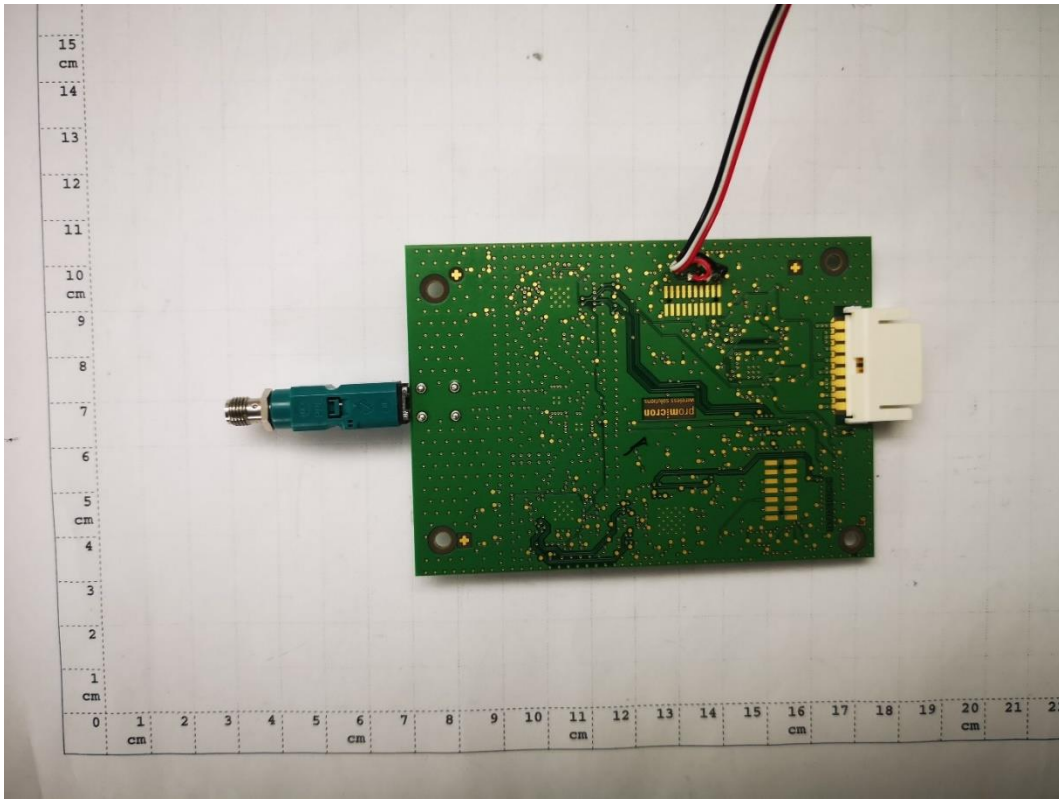
Photograph 2: Module-Front-Top Side



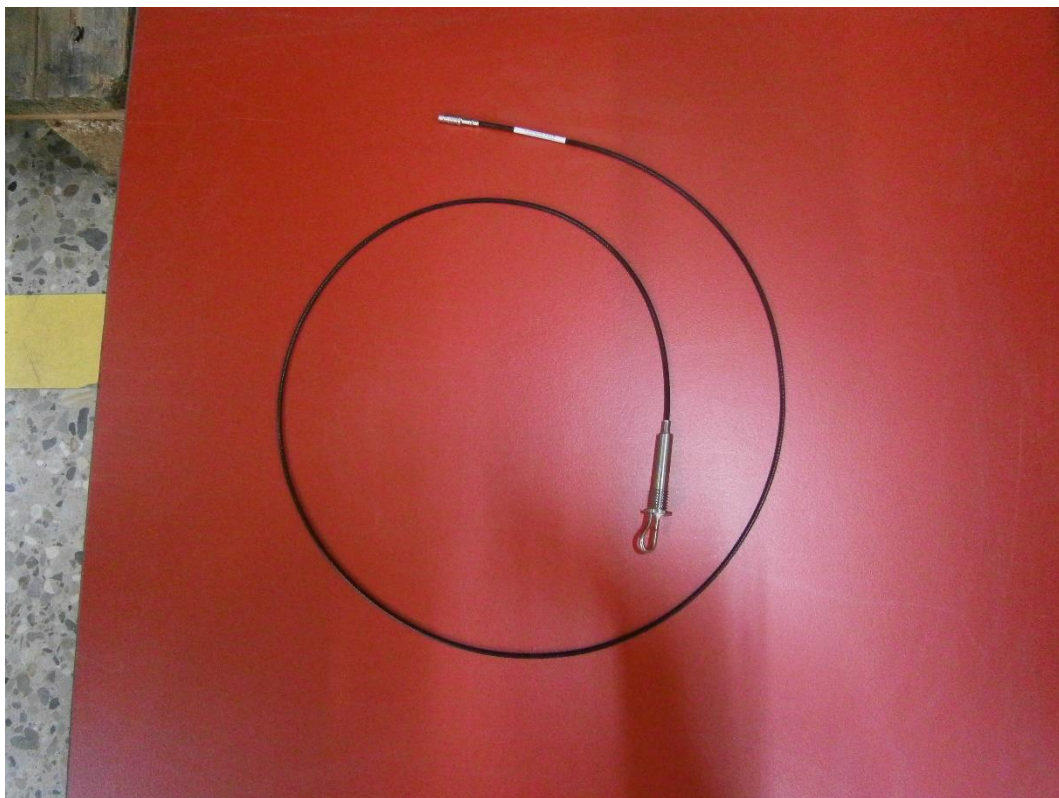
Photograph 3: 1-DIN TCC MID Radio -Rear Side



Photograph 4: Module -Rear Side



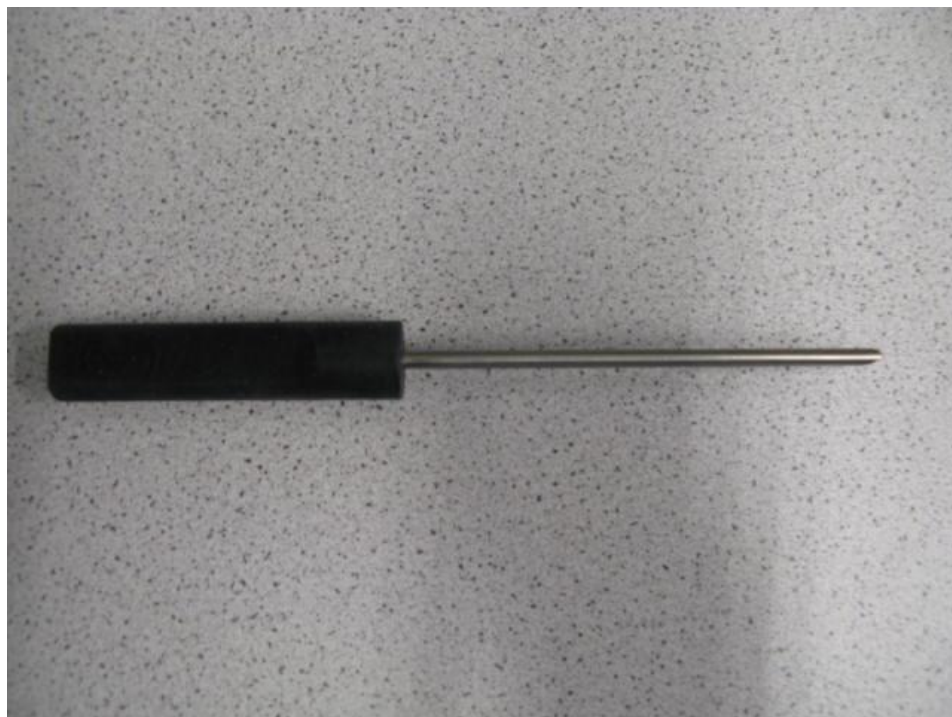
Photograph 6: Module –Bottom side



Photograph 7: Loop Antenna

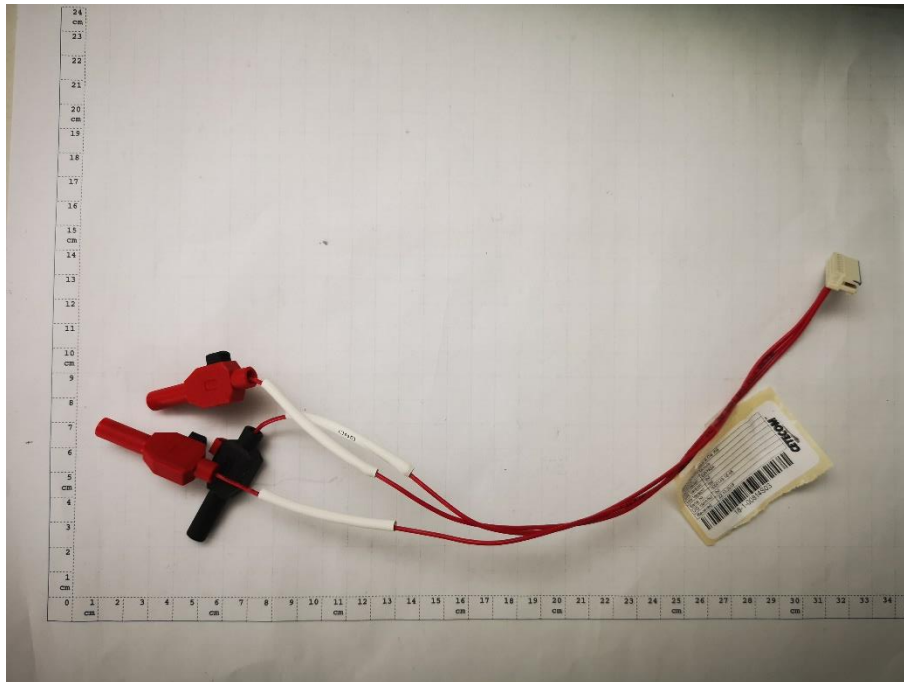


Photograph 8: Loop Antenna placement in the cavity

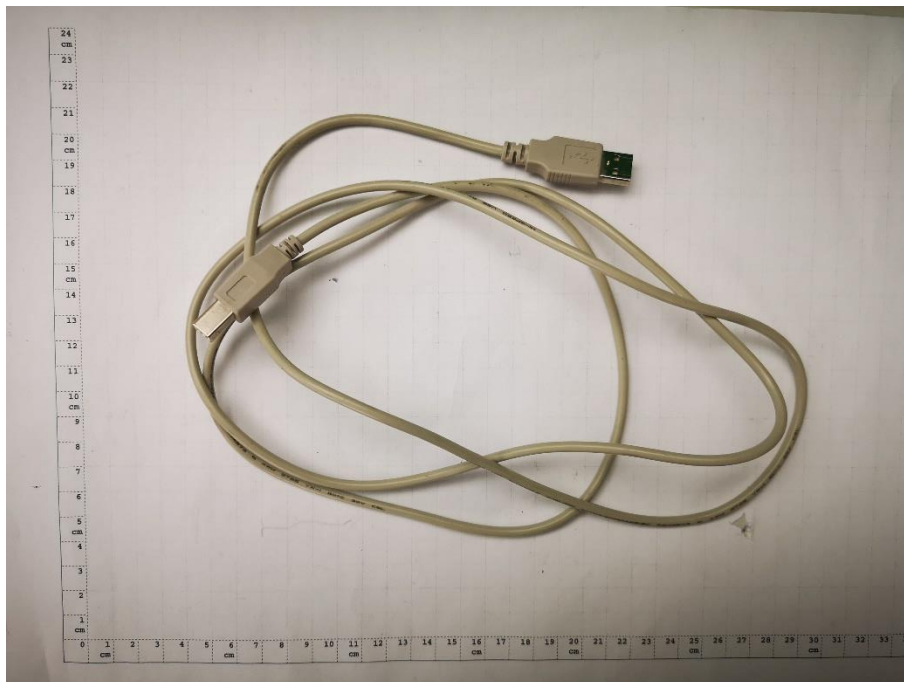


Photograph 9: Wireless Food Probe

1.3. Auxiliary Equipments (AEs)



Photograph 10: AE 1 - DC power Cable for Module Adapter



Photograph 11: AE 2 - USB Cable