

Annex 2: External photographs of EUT to
PARTIAL TEST REPORT
No.: 18-1-0210201T01a

According to:
FCC Regulations
Part 15.205, Part 15.209, Part 15.247

ISED-Regulations
RSS-Gen, Issue 5, RSS-247, Issue 2

for

Miele & Cie. KG

Wireless Food Probe System
(Host:H6880-2BP2)

Contains FCC ID: SSVNAEPI02
Contains ISED: 5669B-NAEPI02




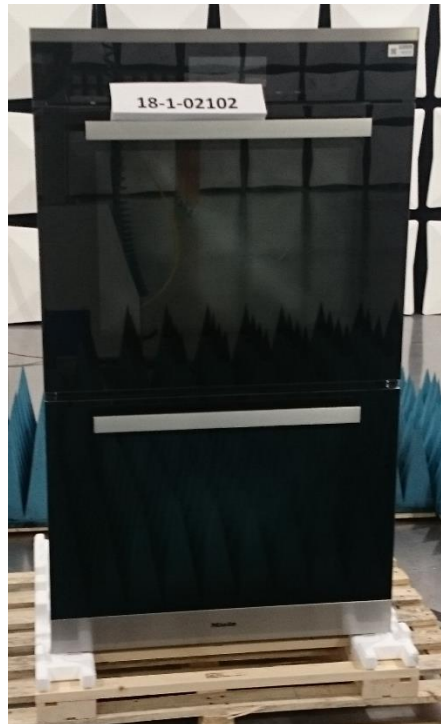
Laboratory Accreditation and Listings	
  Deutsche Akkreditierungsstelle D-PL-12047-01-01 D-PL-12047-01-03 D-PL-12047-01-04	
Accredited EMC-Test Laboratory	
 WiFi ALLIANCE	ctia Authorized™ Test Lab Lab Code: 20011130-00
accredited according to DIN EN ISO/IEC 17025	
CETECOM GmbH Laboratory Radio Communications & Electromagnetic Compatibility Im Teelbruch 116 • 45219 Essen • Germany Registered in Essen, Germany, Reg. No.: HRB Essen 8984 Tel.: + 49 (0) 20 54 / 95 19-954 • Fax: + 49 (0) 20 54 / 95 19-964 E-mail: info@cetecom.com • Internet: www.cetecom.com	

TABLE OF CONTENTS:

1. EXTERNAL PHOTOGRAPHS.....	3
1.1. Equipment Under Test (EUT)-Radiated Test Sample	3
1.2. Equipment Under Test (EUT)- Test Sample.....	4
1.3. Auxiliary Equipments (AEs)	8

1. External photographs

1.1. Equipment Under Test (EUT)-Radiated Test Sample



Photograph 1:Radiated Test Sample front View

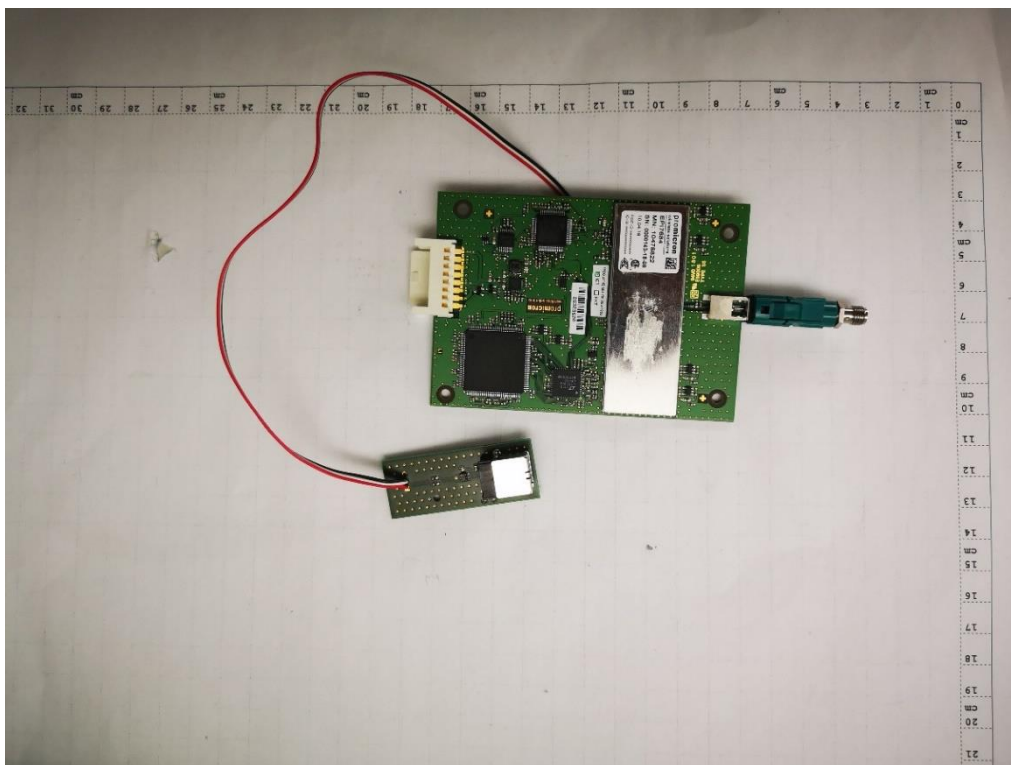


Photograph 2:Radiated Test Sample rear View

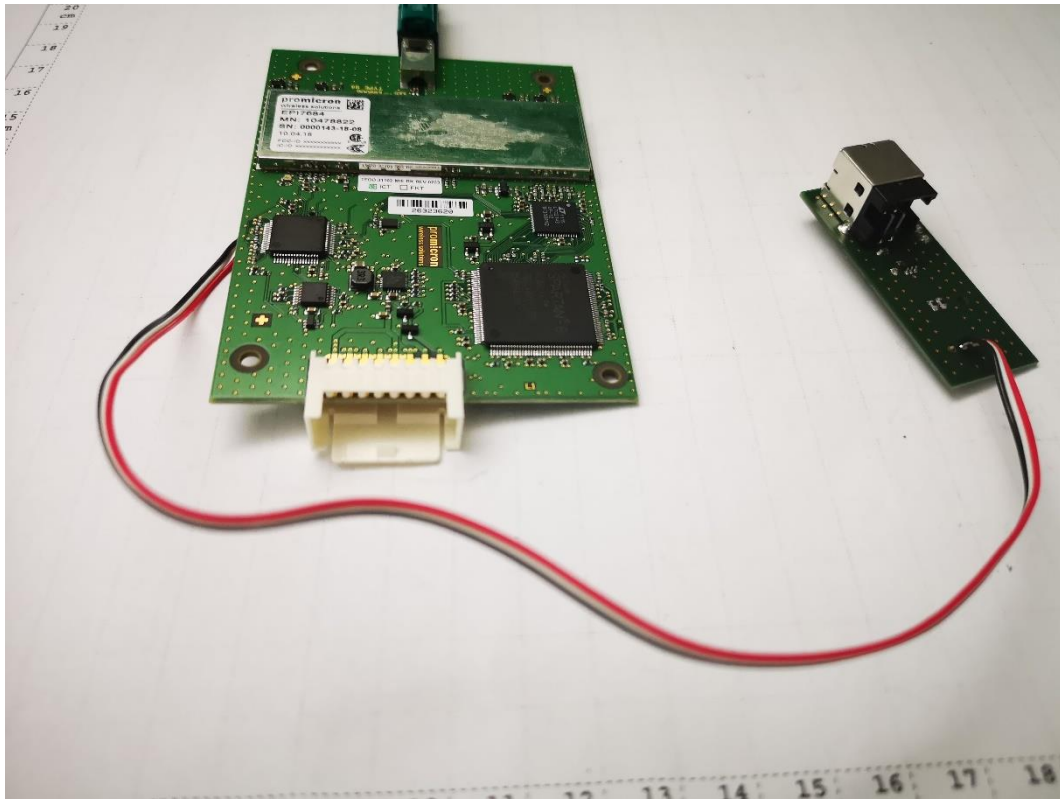
1.2. Equipment Under Test (EUT)- Test Sample



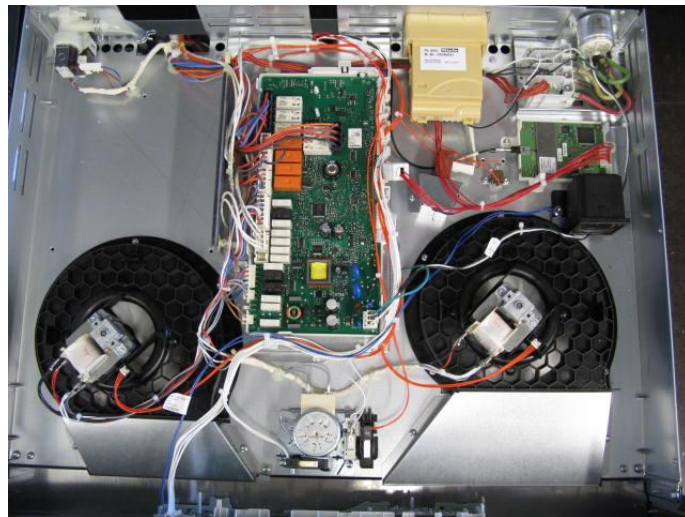
Photograph 3: Module-Front-Top Side



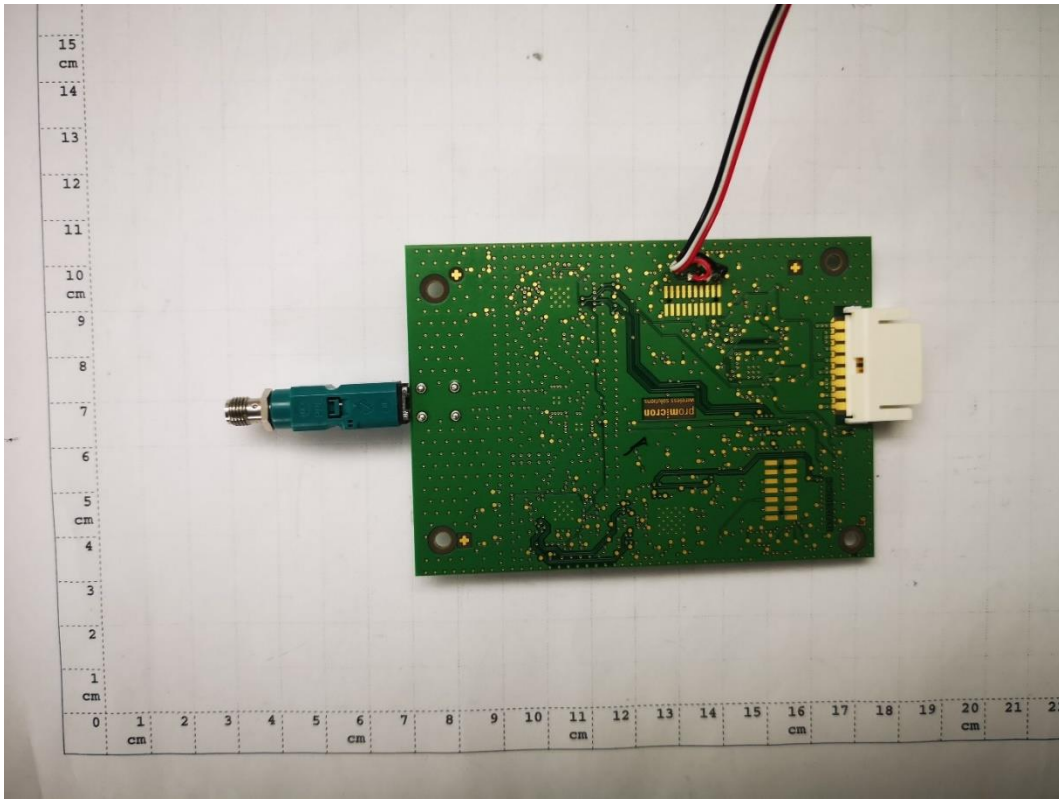
Photograph 4: 1-DIN TCC MID Radio -Rear Side



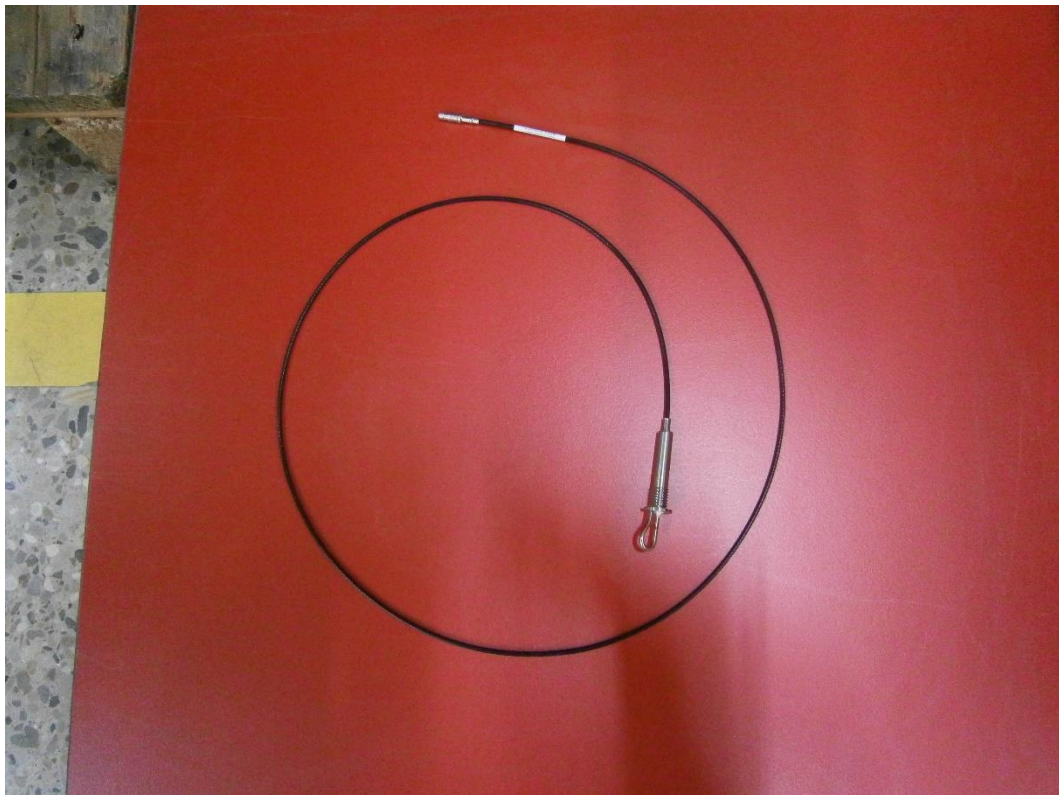
Photograph 5: Module -Rear Side



Photograph 6: Radiated Test Sample Placement of the module



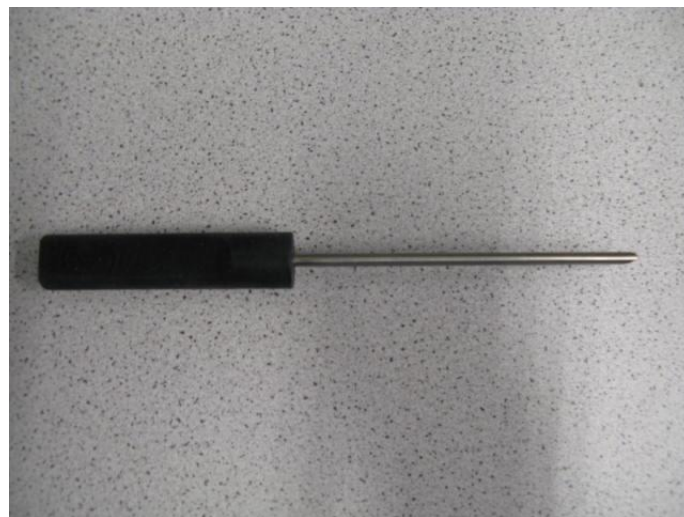
Photograph 7: Module –Bottom side



Photograph 8: Loop Antenna



Photograph 9: Loop Antenna placement in the cavity

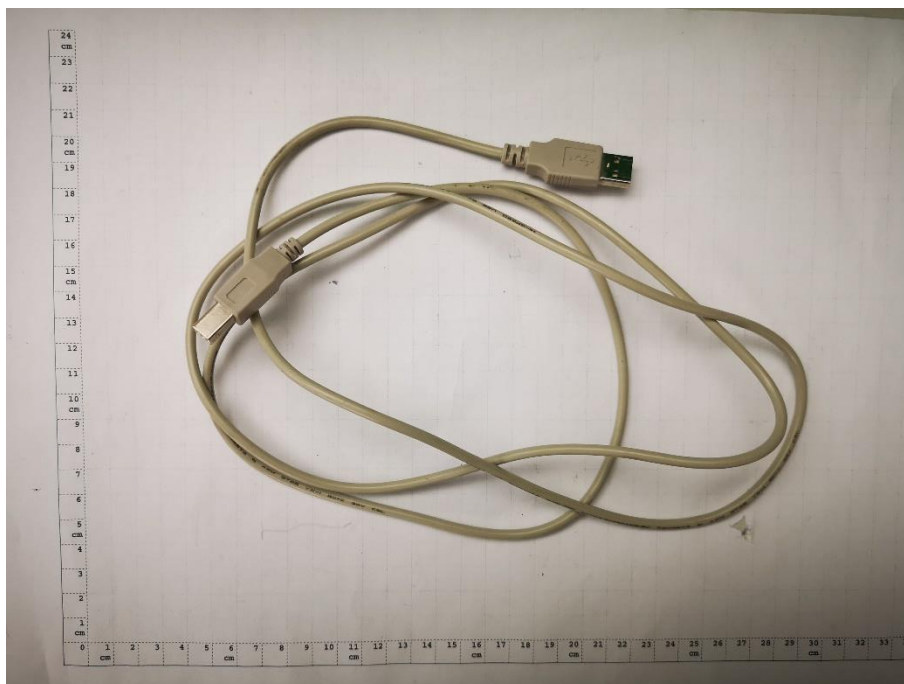


Photograph 10: Wireless Food Probe

1.3. Auxiliary Equipments (AEs)



Photograph 11: AE 1 - DC power Cable for Module Adapter



Photograph 12: AE 2 – USB Cable