

Annex 2: External photographs of EUT
to TEST REPORT
No.: 18-1-0081401T01a-C1

According to:

FCC Regulations
Part 15.205, Part 15.209
Part 15.247

ISED-Regulations
RSS-Gen Issue 5
RSS-247 Issue 2

for

Miele & Cie. KG

Wireless food Probe System
(Host H6880-2BP)
FCC ID: SSVNAEPI02
ISED: 5669B-NAEPI02




Laboratory Accreditation and Listings	
  <p>Deutsche Akkreditierungsstelle D-PL 12047-01-01 D-PL 12047-01-03 D-PL 12047-01-04</p>	
Accredited EMC-Test Laboratory	
 WiFi ALLIANCE	ctia Authorized TM Test Lab Lab Code: 20011130-00
accredited according to DIN EN ISO/IEC 17025	
CETECOM GmbH Laboratory Radio Communications & Electromagnetic Compatibility Im Teelbruch 116 • 45219 Essen • Germany Registered in Essen, Germany, Reg. No.: HRB Essen 8984 Tel.: + 49 (0) 20 54 / 95 19-954 • Fax: + 49 (0) 20 54 / 95 19-964 E-mail: info@cetecom.com • Internet: www.cetecom.com	

TABLE OF CONTENTS:

1. EXTERNAL PHOTOGRAPHS..... 3

1.1. Equipment Under Test (EUT)-Radiated Test Sample 3

1.2. Equipment Under Test (EUT)- Test Sample..... 4

1.3. Auxiliary Equipments (AEs) 8

1. External photographs

1.1. Equipment Under Test (EUT)-Radiated Test Sample



Photograph 1: Radiated Test Sample front View

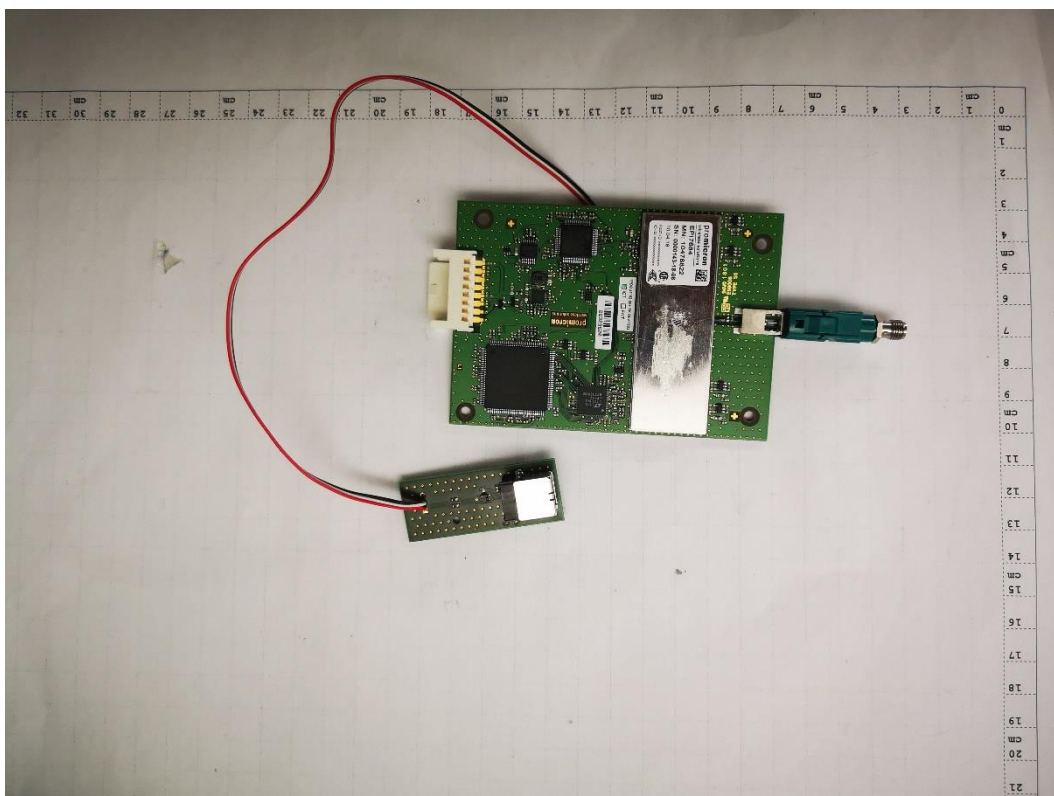


Photograph 2: Radiated Test Sample rear View

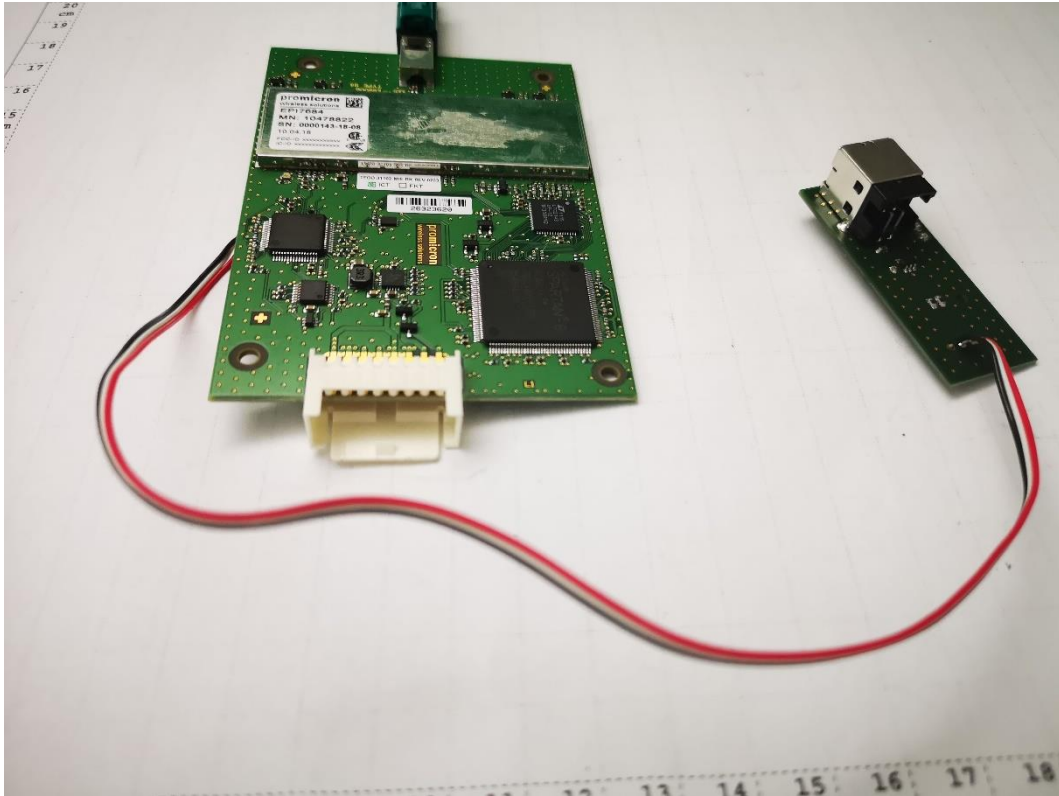
1.2. Equipment Under Test (EUT)- Test Sample



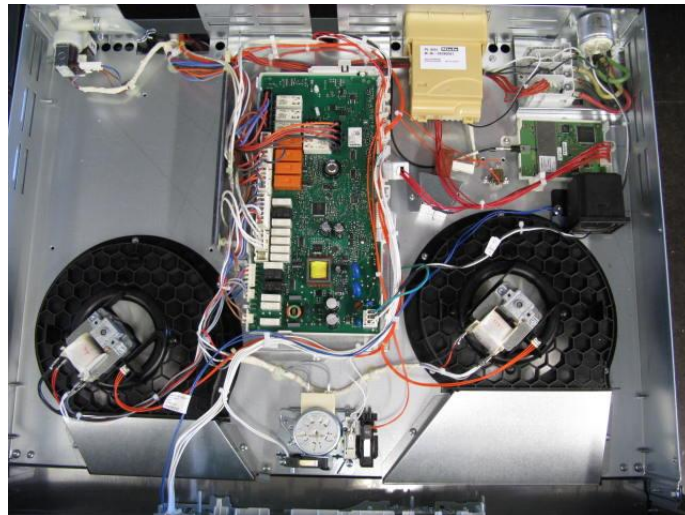
Photograph 3: Module-Front-Top Side



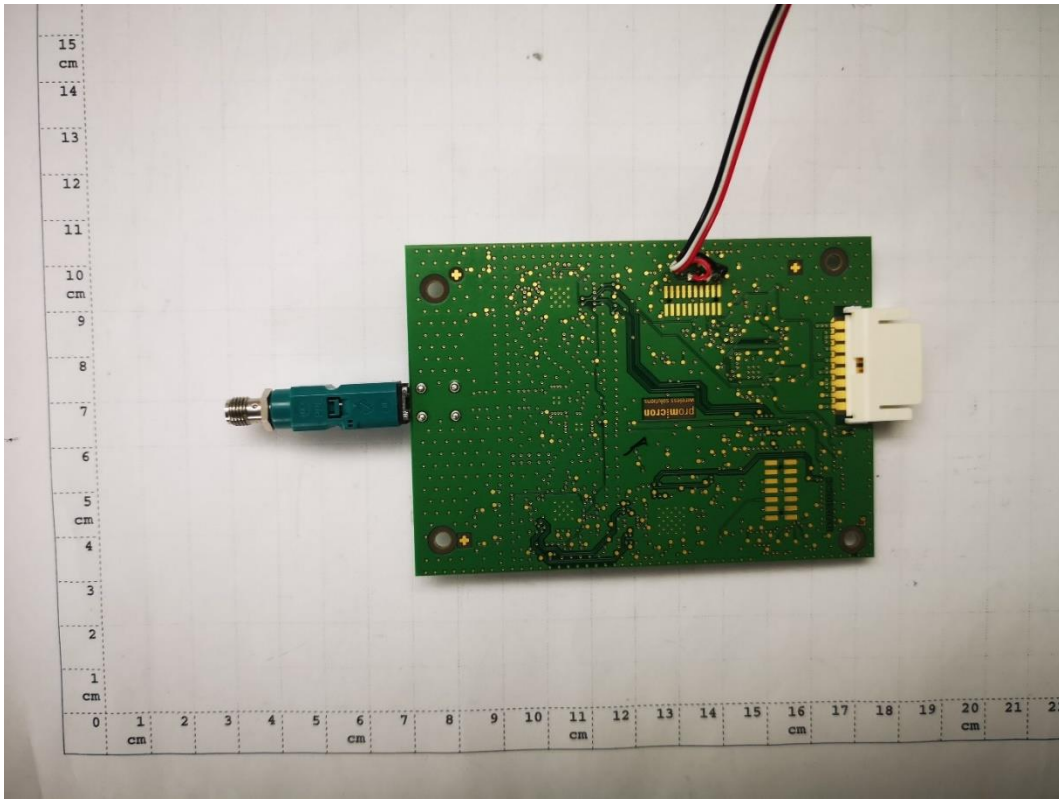
Photograph 4: 1-DIN TCC MID Radio –Rear Side



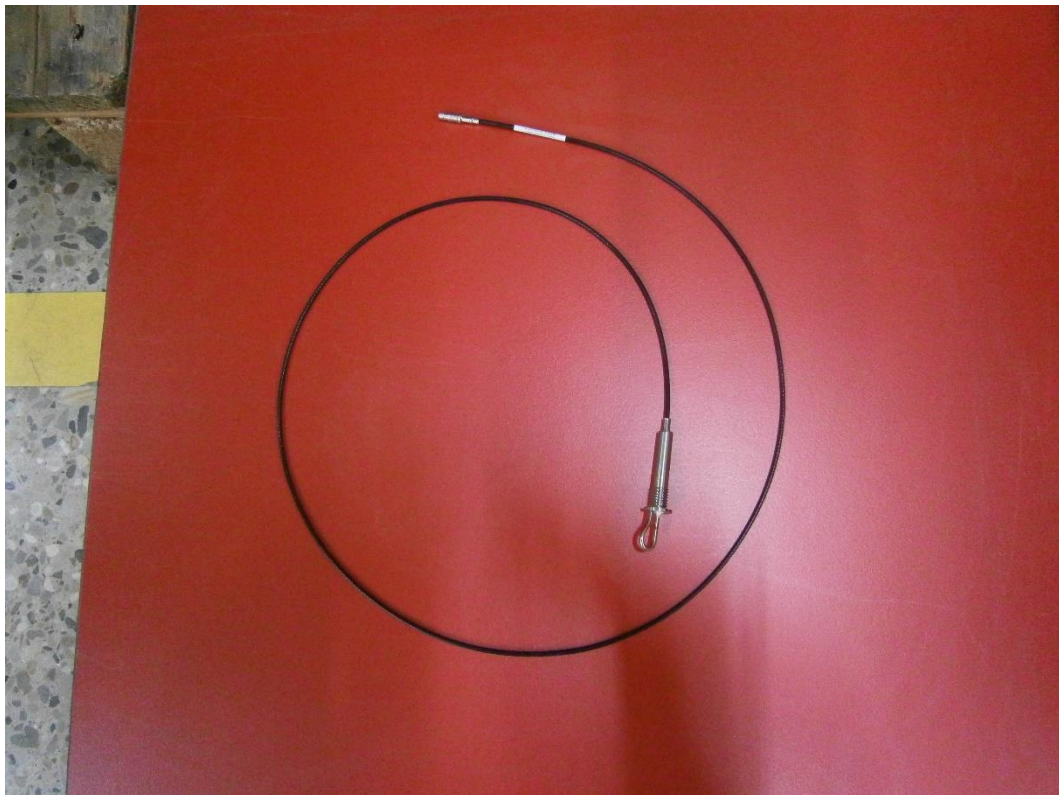
Photograph 5: Module –Rear Side



Photograph 6: Radiated Test Sample Placement of the module



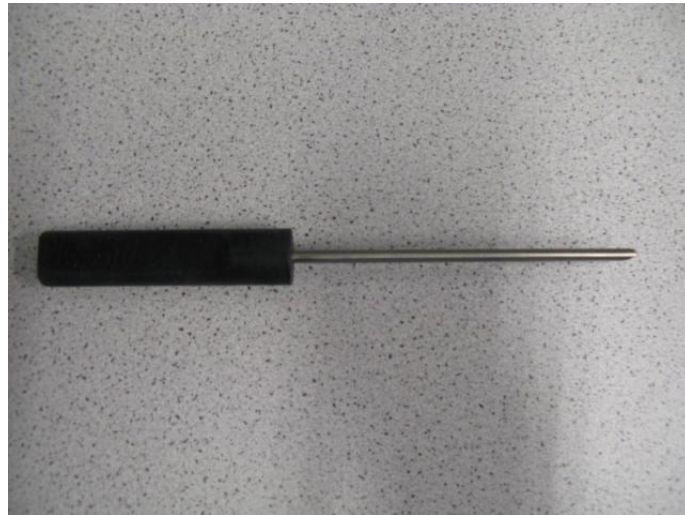
Photograph 7: Module –Bottom side



Photograph 8: Loop Antenna

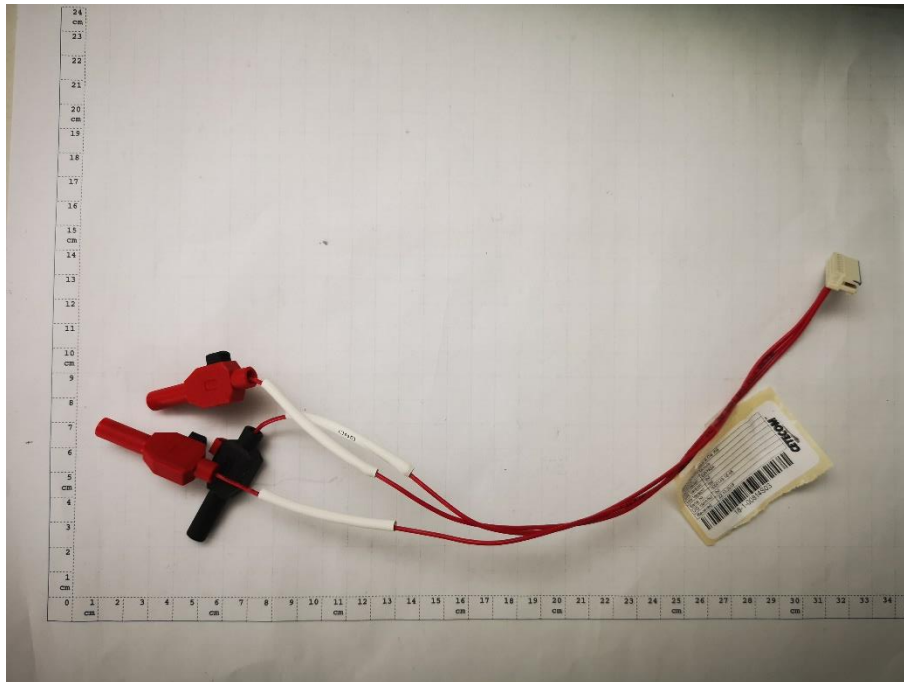


Photograph 9: Loop Antenna placement in the cavity

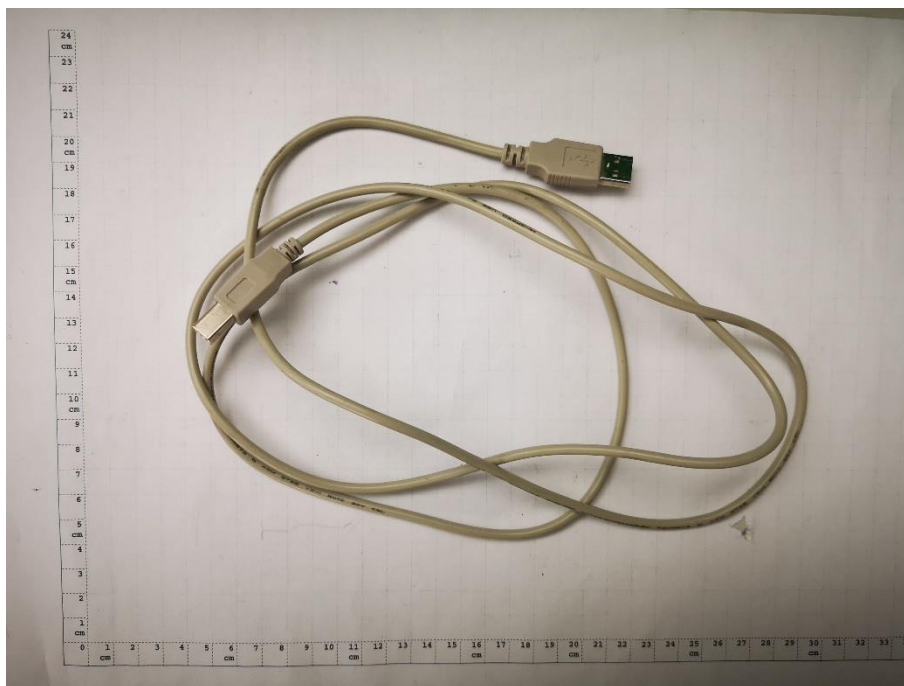


Photograph 10: Wireless Food Probe

1.3. Auxiliary Equipments (AEs)



Photograph 11: AE 1 - DC power Cable for Module Adapter



Photograph 12: AE 2 – USB Cable