

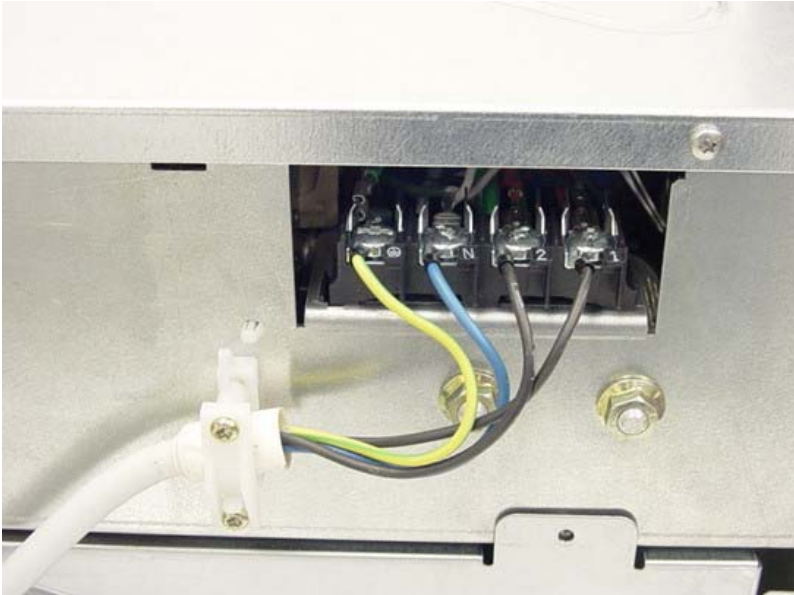
ANNEX 3 TO TEST REPORT # EMCC-990159D, 2004-02-11

**PHOTOGRAPHS OF EQUIPMENT UNDER TEST (EUT)
INTERNAL VIEWS**

EQUIPMENT UNDER TEST:	Household Microwave / Convection Oven
Type:	H4080BM
Model:	MW6041
Serial No:	00/59006315
Magnetron Type:	TOSHIBA 2M282H (ML)
Equipment Category:	Industrial, Scientific and Medical (ISM) equipment
Manufacturer:	MIELE & CIE. KG
Address:	Carl-Miele-Platz 1 59302 Oelde Germany
Phone:	+49-5245-91-4627
Fax:	+49-5245-91-4600
RELEVANT STANDARD:	47 CFR Part 18

CONTENTS	Page
1 Power Cord Connection	3
2 Top Internal View	3
3 Board EV790	4
4 Board EPL772, Component Side	4
5 Board EPL772, Labelling	5
6 Board EPL772, Soldering Side	5
7 Power Input with Filtering	6
8 HV Transformer	6
9 HV Capacitor / Diodes	7
10 Location of Display PCB	7
11 Magnetron; Labelling	8
12 Magnetron; Top View	8
13 Control Electronics	9
14 Control Electronics	9
15 Control Electronics	10
16 Control Electronics	10
17 Control Electronics	11
18 Magnetron Assembly; Bottom View with Stirrer	11
19 Magnetron Assembly; Side View with Stirrer Motor	12
20 Magnetron Assembly; Side View with Stirrer Motor	12
21 Magnetron Assembly; Side View with Stirrer Motor	13
22 Magnetron Assembly; Labelling (spare sample assembly)	13

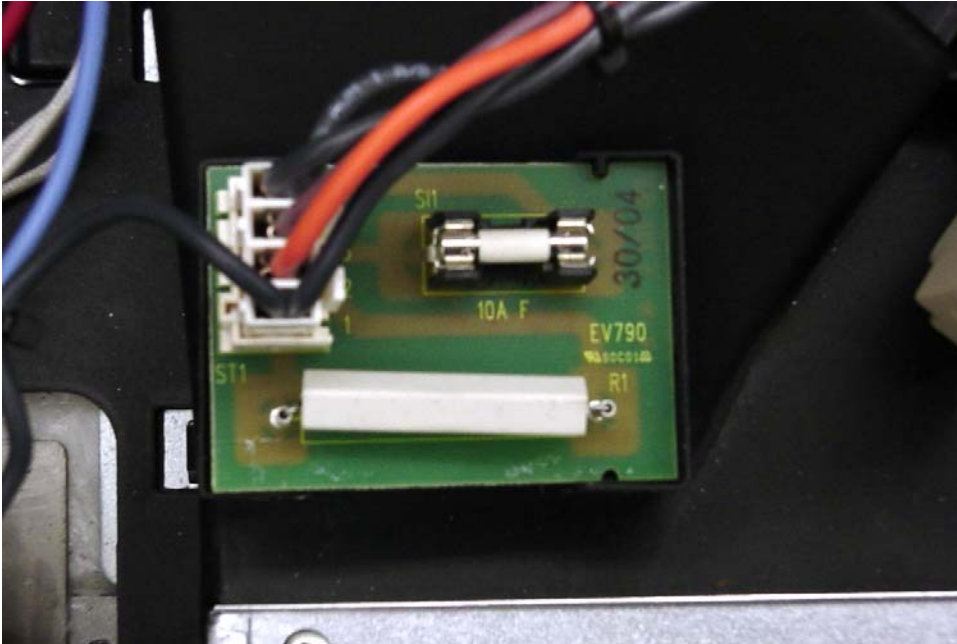
1 Power Cord Connection



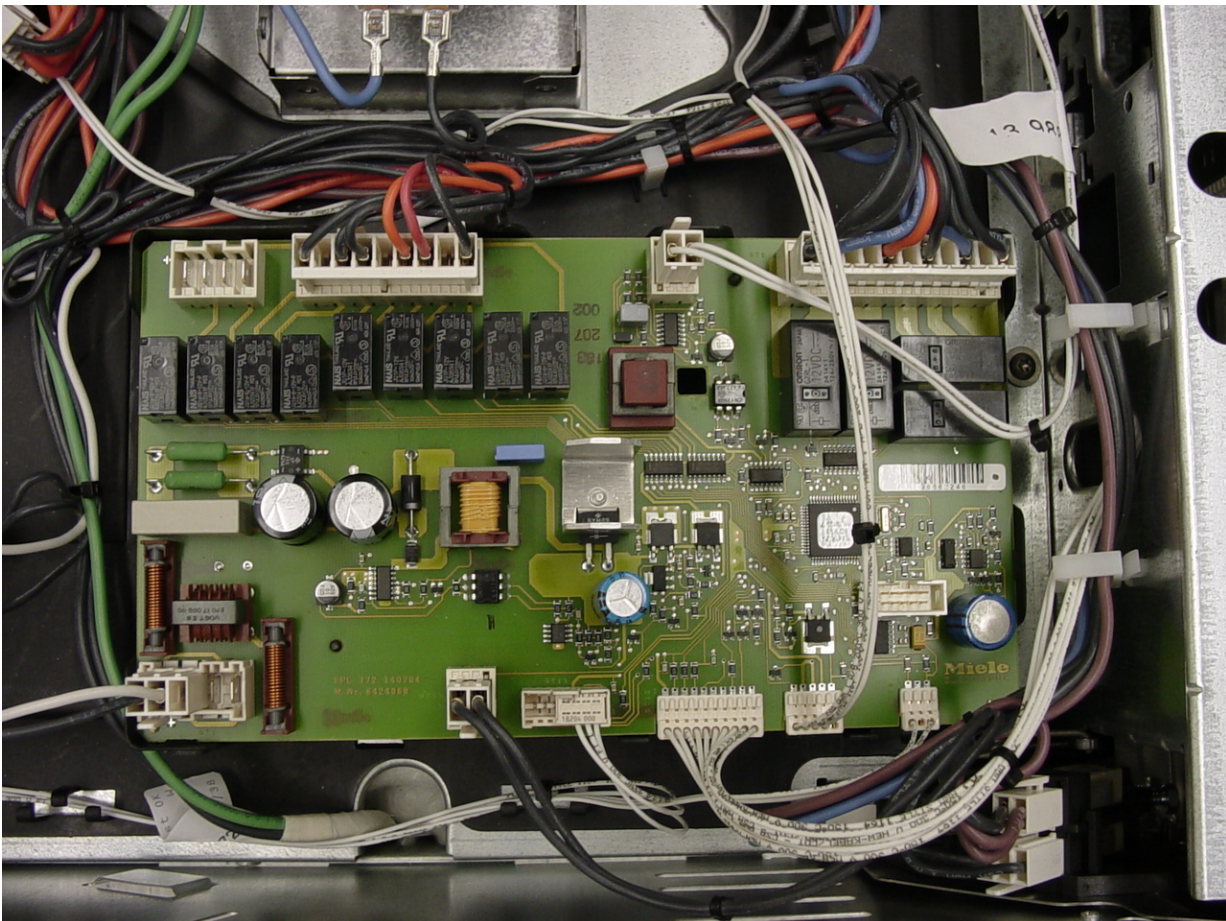
2 Top Internal View



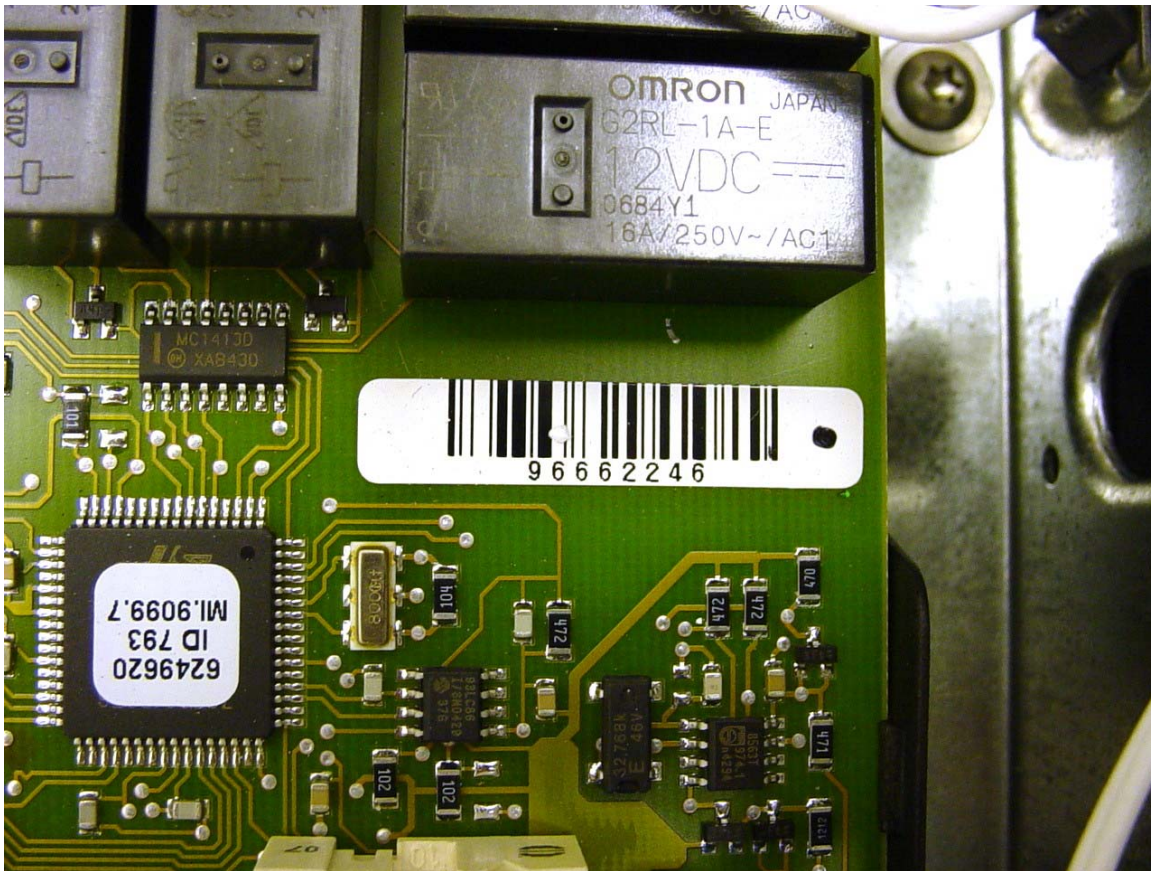
3 Board EV790



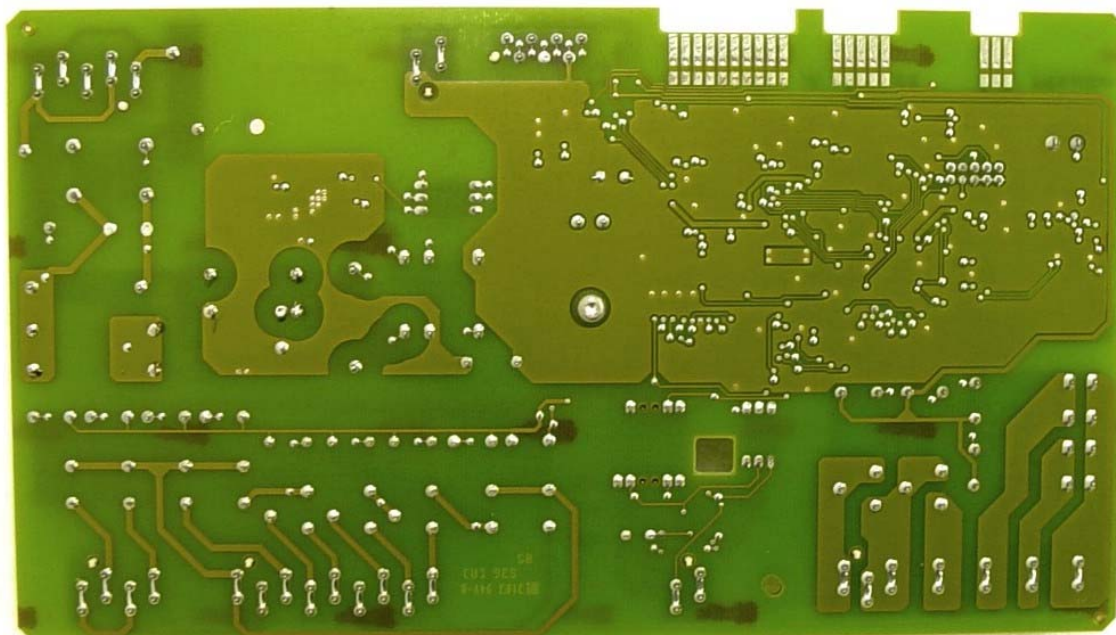
4 Board EPL772, Component Side



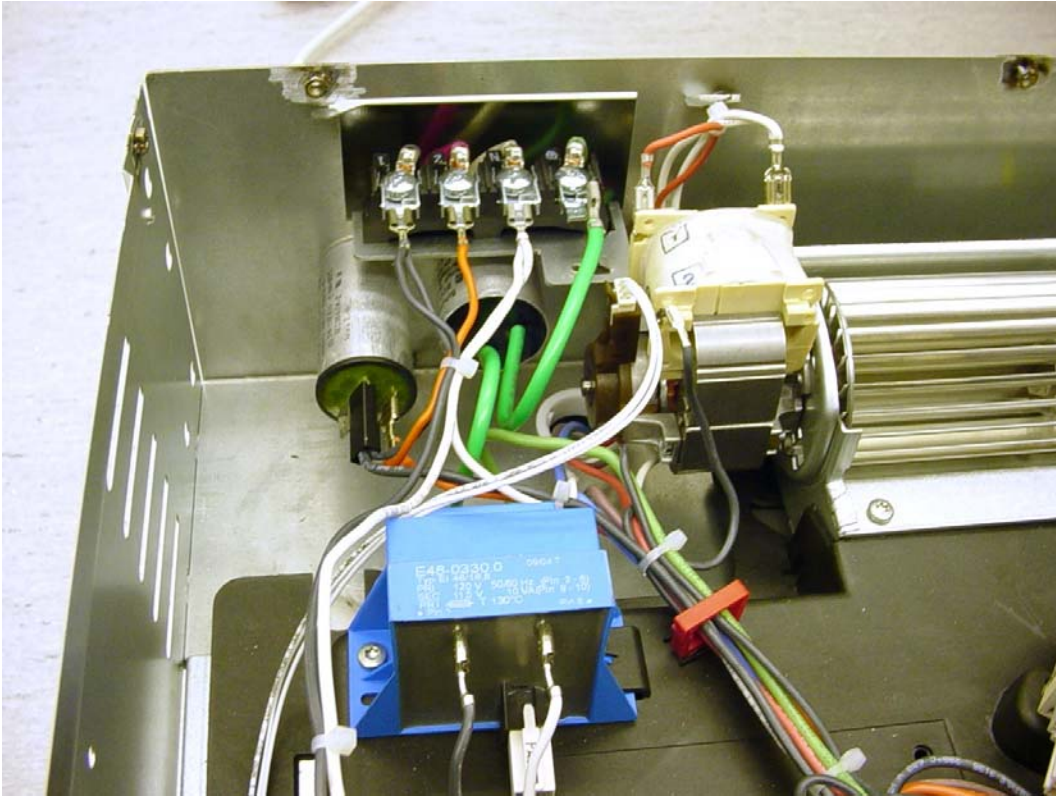
5 Board EPL772, Labelling



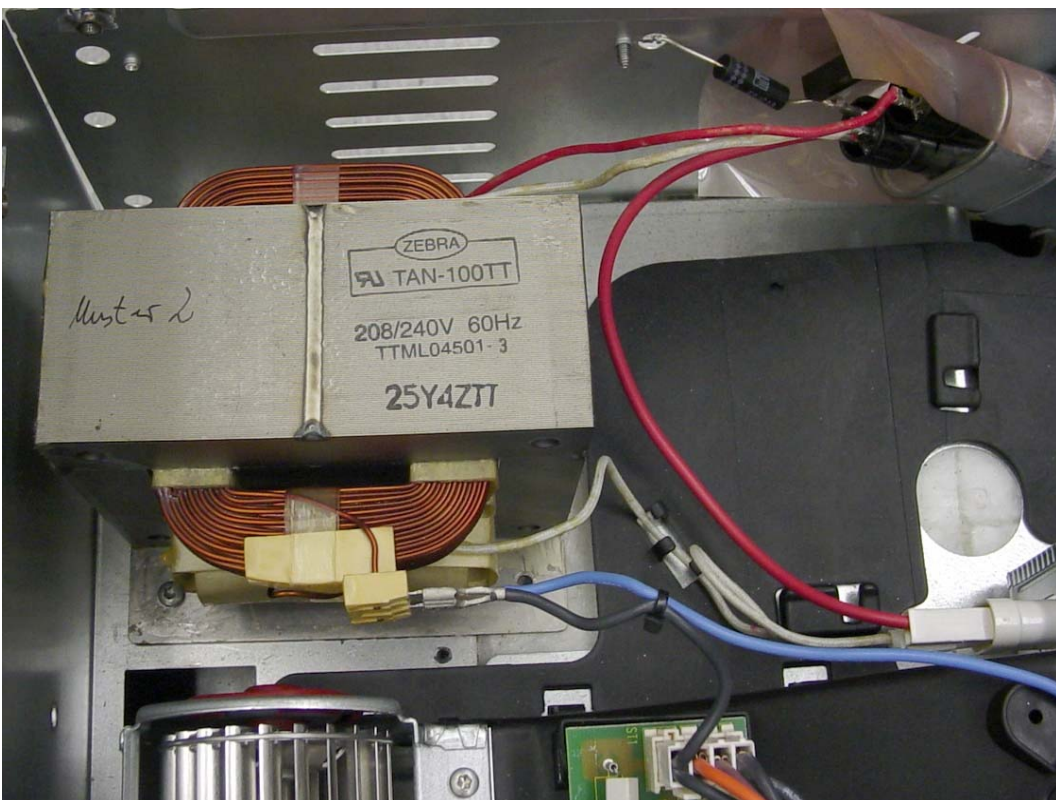
6 Board EPL772, Soldering Side



7 Power Input with Filtering



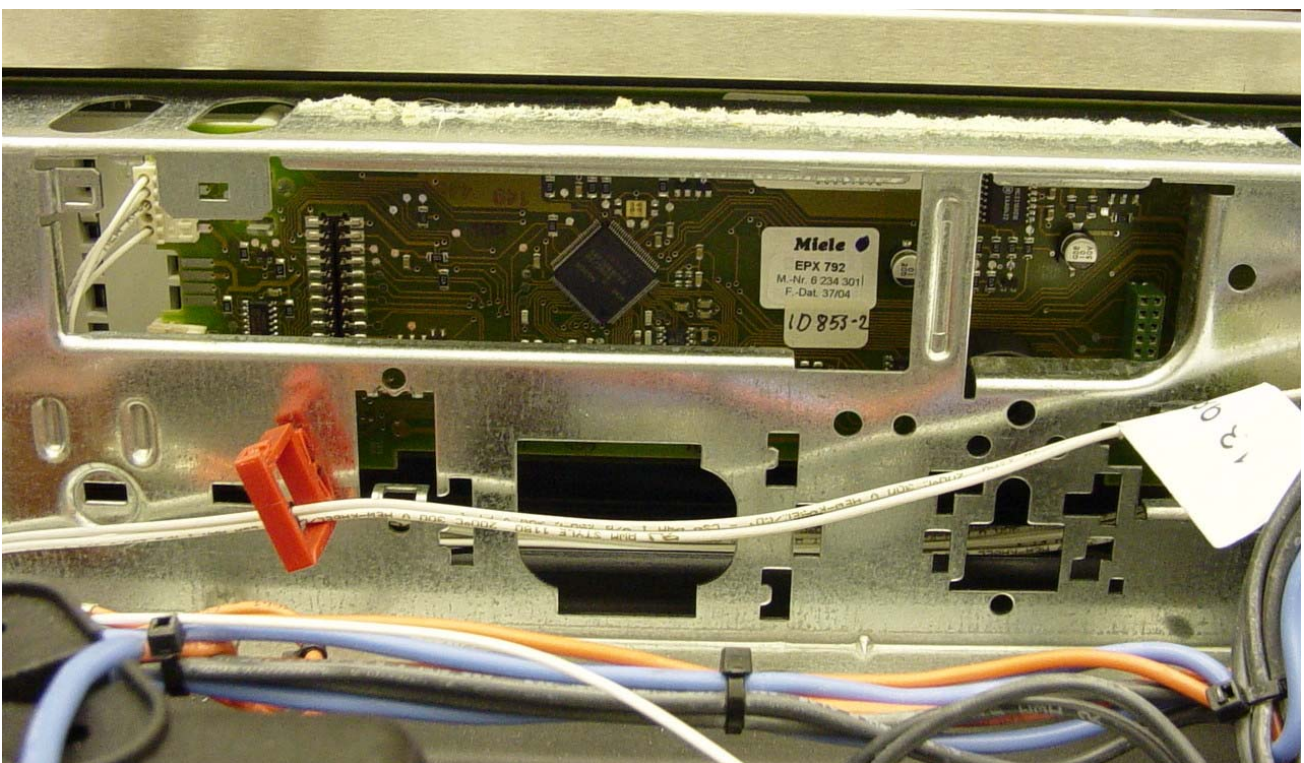
8 HV Transformer



9 HV Capacitor / Diodes



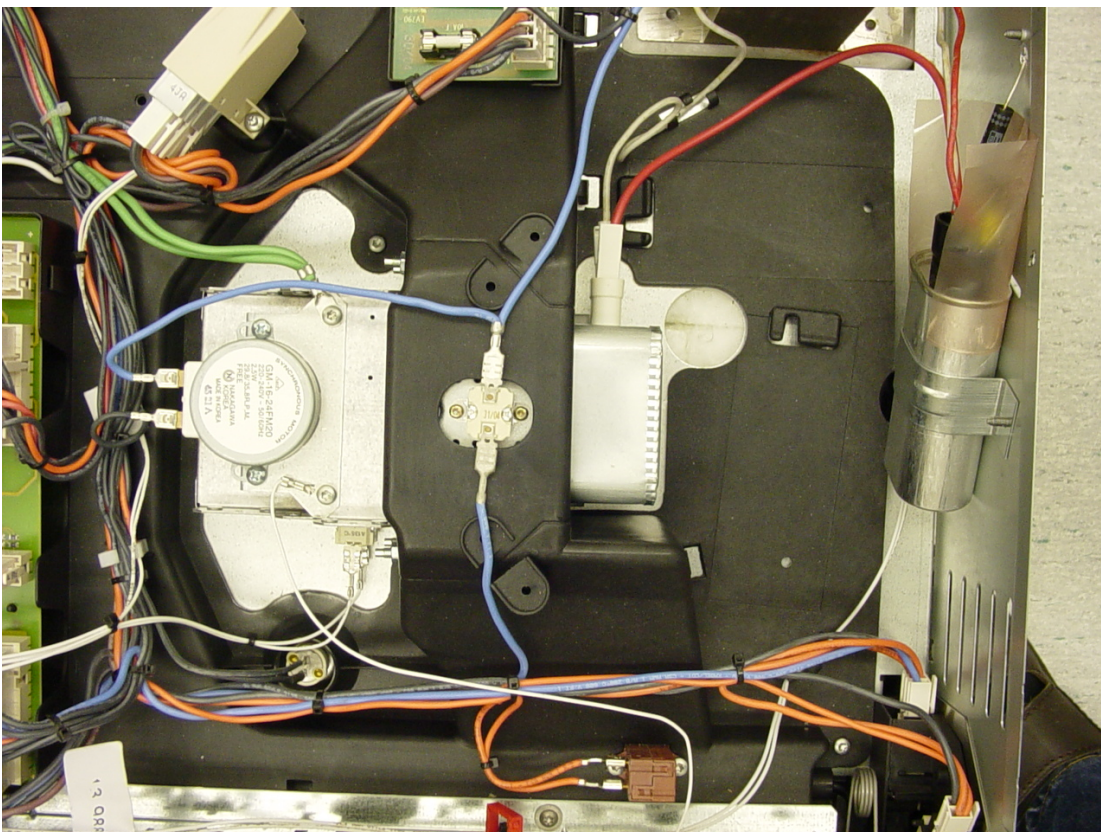
10 Location of Display PCB



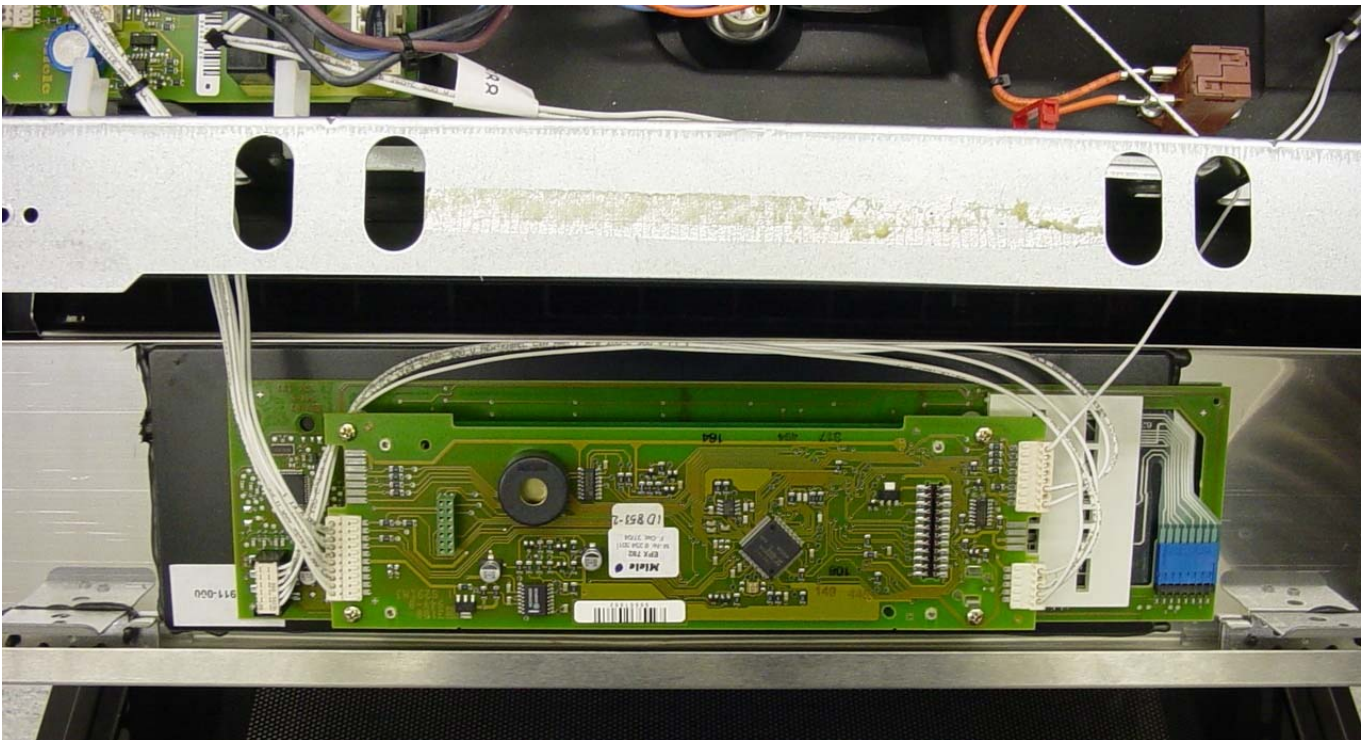
11 Magnetron; Labelling



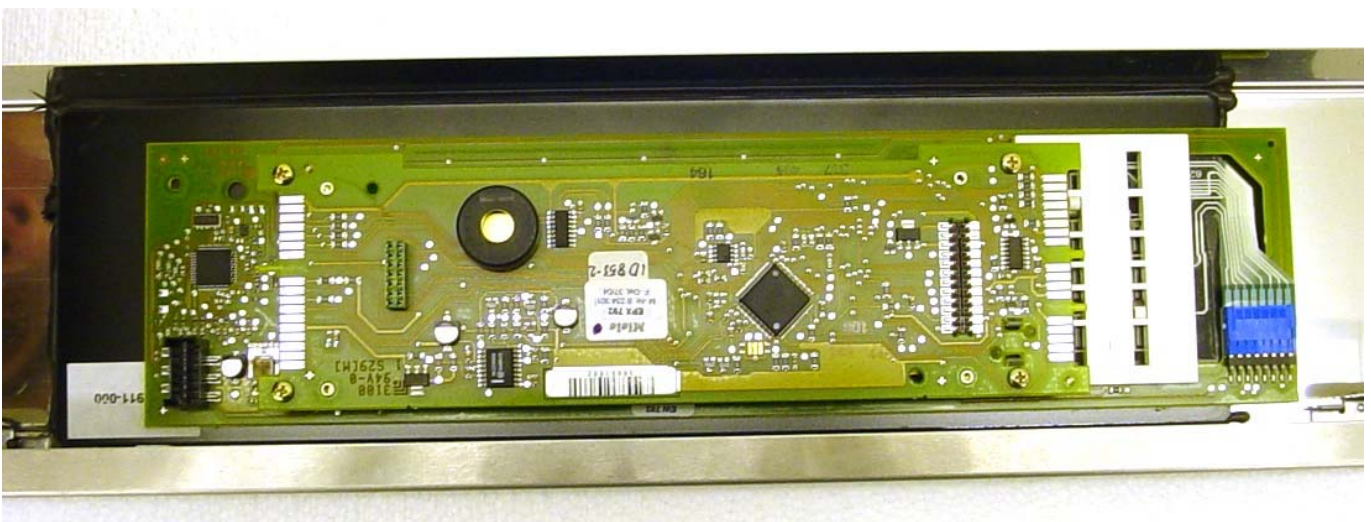
12 Magnetron; Top View



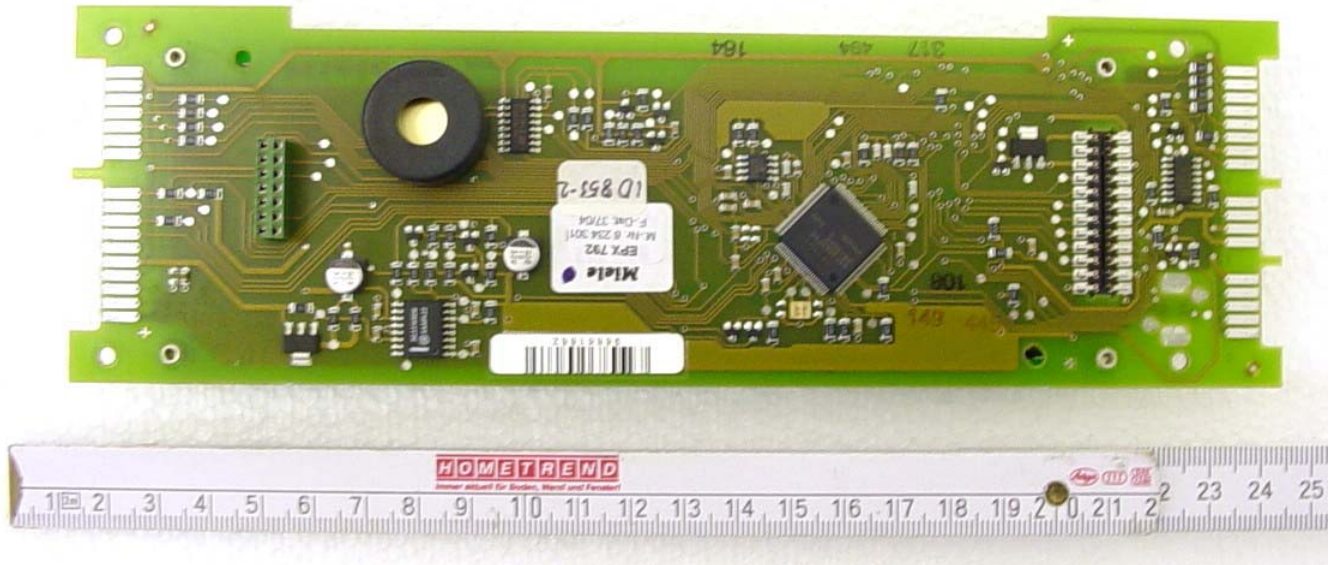
13 Control Electronics



14 Control Electronics



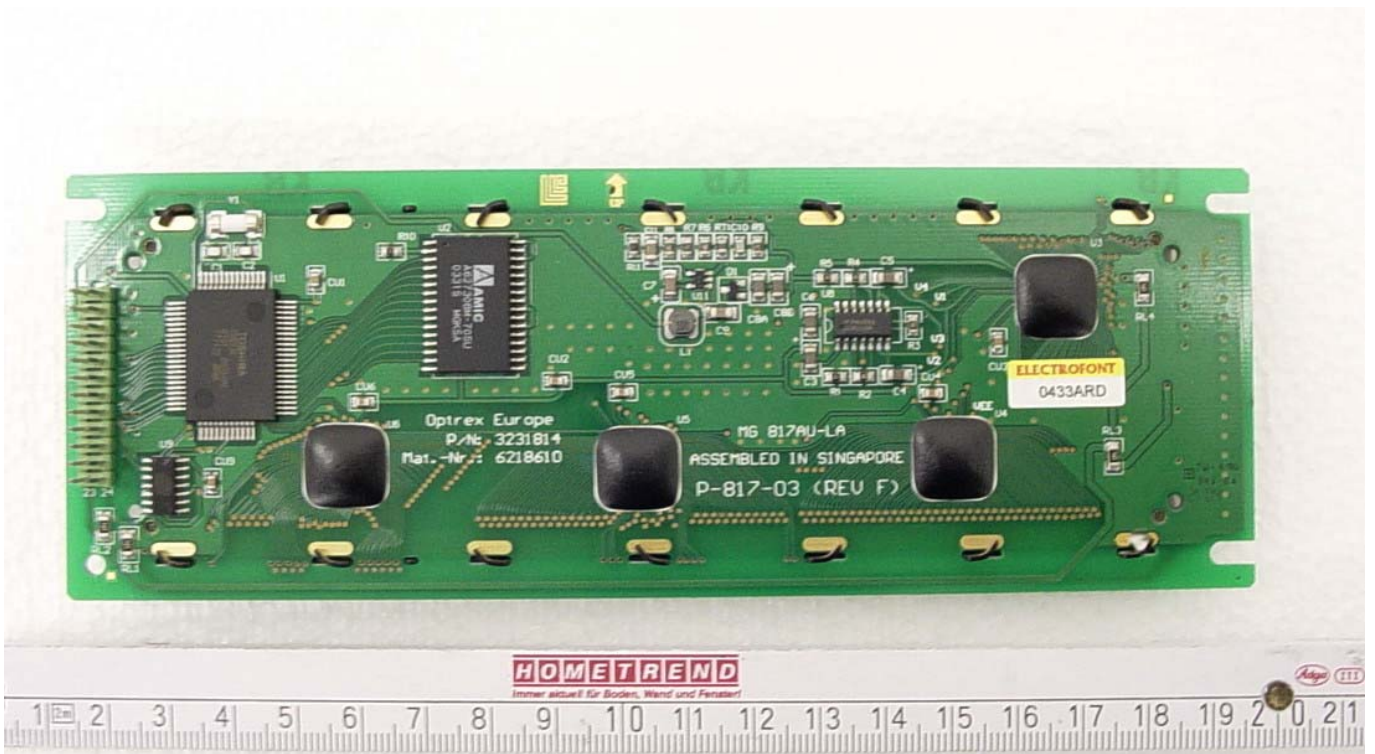
15 Control Electronics



16 Control Electronics

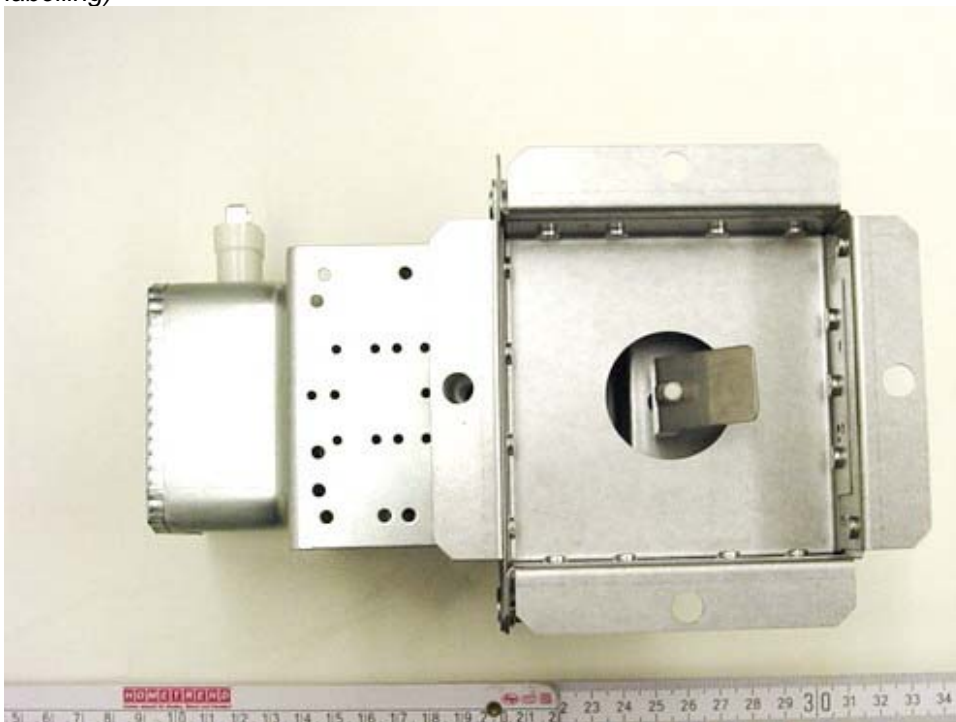


17 Control Electronics



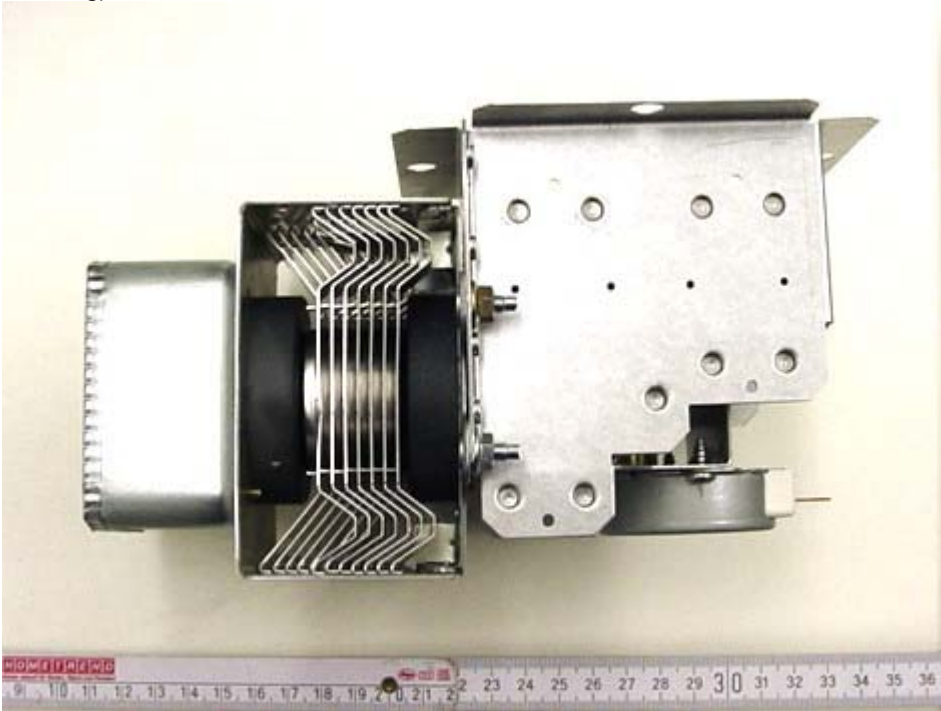
18 Magnetron Assembly; Bottom View with Stirrer

Remark: All detailed magnetron assembly photos taken from the submitted spare assembly (refer to photo 22 for labelling)



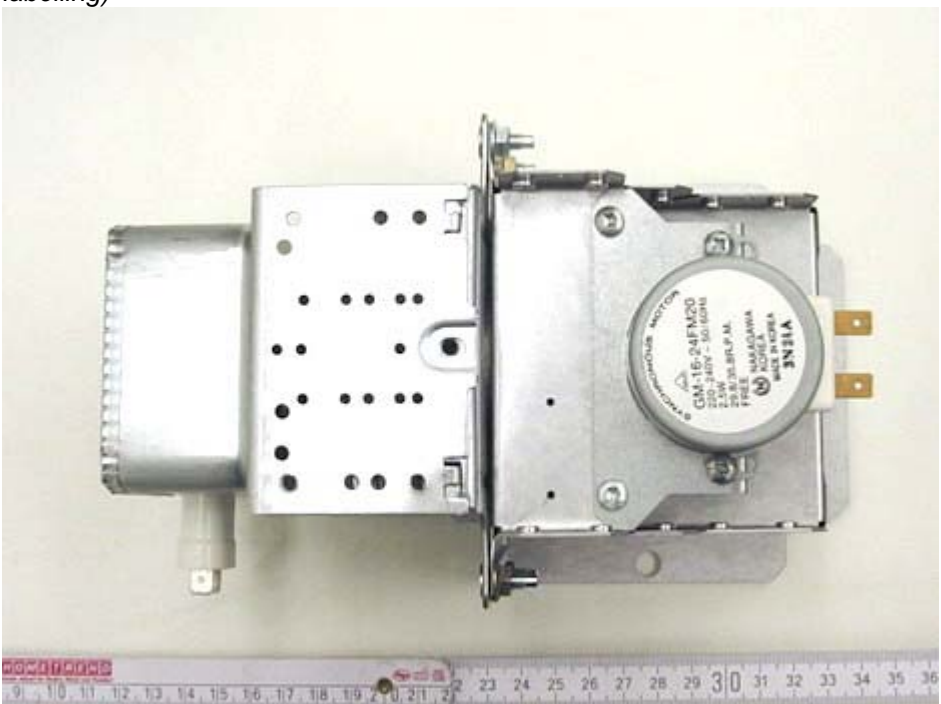
19 Magnetron Assembly; Side View with Stirrer Motor

Remark: All detailed magnetron assembly photos taken from the submitted spare assembly (refer to photo 22 for labelling)



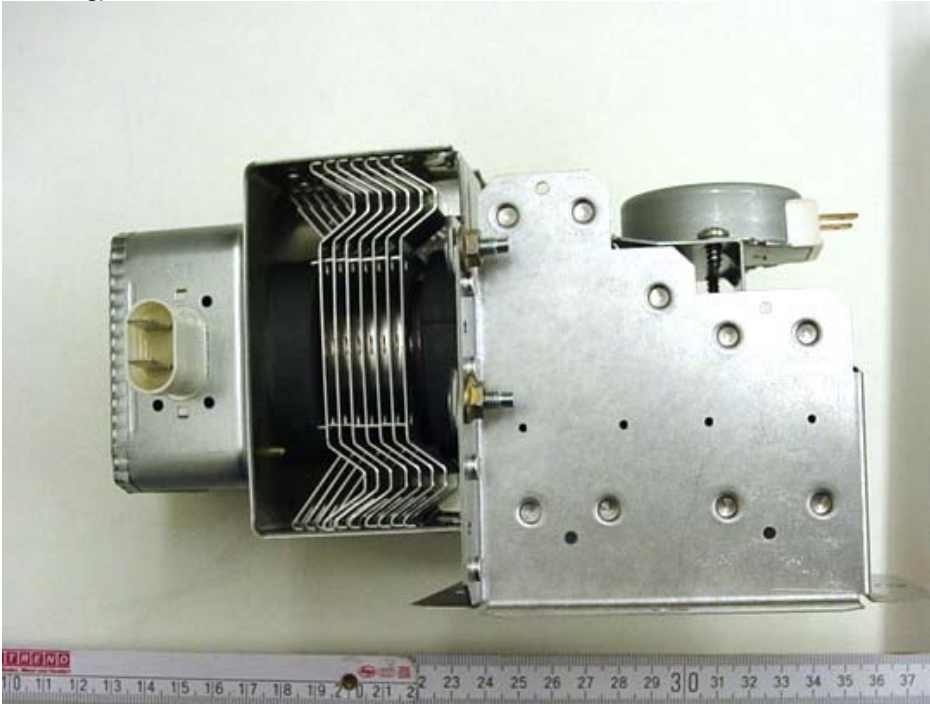
20 Magnetron Assembly; Side View with Stirrer Motor

Remark: All detailed magnetron assembly photos taken from the submitted spare assembly (refer to photo 22 for labelling)



21 Magnetron Assembly; Side View with Stirrer Motor

Remark: All detailed magnetron assembly photos taken from the submitted spare assembly (refer to photo 22 for labelling)



22 Magnetron Assembly; Labelling (spare sample assembly)

