



---

## PORTABLE BLUETOOTH TAILGATE/TROLLEY SPEAKER



**MODEL: SMPS-900**  
**USER MANUAL**



PLEASE READ THIS USER MANUAL COMPLETELY BEFORE OPERATING THIS  
UNIT AND RETAIN THIS BOOKLET FOR FUTURE REFERENCE.

# WARNING

TO PREVENT FIRE OR SHOCK HAZARD, DO NOT USE THIS PLUG WITH AN EXTENSION CORD, RECEPTACLE OR OTHER OUTLET UNLESS THE BLADES CAN BE FULLY INSERTED TO PREVENT BLADE EXPOSURE. TO PREVENT FIRE OR SHOCK HAZARD, DO NOT EXPOSE THIS APPLIANCE TO RAIN OR MOISTURE.



The Caution Marking is located at the back enclosure of the apparatus.  
The Rating plate is located at the back enclosure of the apparatus

## IMPORTANT SAFETY INSTRUCTIONS

1. Read these instructions.
2. Keep these instructions.
3. Heed all warnings.
4. Follow all instructions.
5. Do not use this apparatus near water.
6. Clean only with dry cloth.
7. Do not block any ventilation openings. Install in accordance with the manufacturer's instructions.
8. Do not install near any heat sources such as radiators, heat registers, stoves, or other apparatus (including amplifiers) that produce heat.
9. AC adaptor is used as disconnect device and it should remain readily operable during intended use. In order to disconnect the apparatus from the mains completely, the AC adaptor should be disconnected from the mains socket outlet completely.
10. Only use attachments/accessories specified by the manufacturer.
11. Use only with a cart, stand, tripod, bracket, or table recommended by the manufacturer, or sold with the product. When a cart is used, use caution when moving the cart/apparatus combination to avoid injury from tip-over.
12. Unplug this apparatus during lightning storms or when unused for a long period of time.
13. Refer all servicing to qualified service personnel. Servicing is required when the



apparatus has been damaged in any way, such as power-supply cord or plug is damaged, liquid has been spilled or objects have fallen into the apparatus, the apparatus has been exposed to rain or moisture, does not operate normally, or has been dropped.

14. This appliance shall not be exposed to dripping or splashing water and that no object filled with liquids such as vases shall be placed on the apparatus.
15. Do not overload wall outlet. Use only power source as indicated.
16. Use replacement part as specified by the manufacturer.
17. Upon completion of any service or repairs to this product, ask the service technician to perform safety checks.
18. Power Sources - This product should be operated only from the type of power source indicated on the marking label. If you are not sure of the type of power supply to your home, consult your product dealer or local power company. For products intended to operate from battery power, or other sources, refer to the operating instruction.
19. Object and Liquid Entry - Never push objects of any kind into this product through openings as they may touch dangerous voltage points or short-out parts that could result in a fire or electric shock. Never spill liquid of any kind on the product.
20. Damage Requiring Service - Unplug this product from the wall outlet and refer servicing to qualified service personnel under the following conditions:
  - a) When the power-supply cord or plug is damaged,
  - b) If liquid has been spilled, or objects have fallen into the product,
  - c) If the product has been exposed to rain or water,
  - d) If the product does not operate normally by following the operating instructions. Adjust only those controls that are covered by the operating instructions as an improper adjustment of other controls may result in damage and will often require extensive work by a qualified technician to restore the product to its normal operation.
  - e) If the product has been dropped or damaged in any way, and
  - f) When the product exhibits a distinct change in performance - this indicates a need for service.
21. Battery shall not be exposed to excessive heat such as sunshine, fire or the like.
22. Excessive sound pressure from earphones and headphone can cause hearing loss
23. Minimum distances of 10 cm around the apparatus for sufficient ventilation.
24. The ventilation should not be impeded by covering the ventilation openings with items, such as newspapers, table-cloths, curtains, etc.
25. No naked flame sources, such as lighted candles, should be placed on the apparatus.
26. The use of apparatus in moderate climates.
27. Attention should be drawn to the environmental aspects of battery disposal

## SAVE THESE INSTRUCTIONS

# COMPLIANCE WITH FCC REGULATIONS

FCC ID SSMMEF267B

This device complies with Part 15 of the FCC Rules. Operation is subject to the following two conditions:

- (1) this device may not cause harmful interference, and
- (2) this device must accept any interference received, including interference that may cause undesired operation.

NOTE : This equipment has been tested and found to comply with the limits for a Class B digital device, pursuant to Part 15 of the FCC Rules. These limits are designed to provide reasonable protection against harmful interference in a residential installation. This equipment generates, uses and can radiate radio frequency energy and, if not installed and used in accordance with the instructions, may cause harmful interference to radio communications. However, there is no guarantee that interference will not occur in a particular installation. If this equipment does cause harmful interference to radio or television reception, which can be determined by turning the equipment off and on, the user is encouraged to try to correct the interference by one or more of the following measures:

- Reorient or relocate the receiving antenna.
- Increase the separation between the equipment and receiver.
- Connect the equipment into an outlet on a circuit different from that to which the receiver is connected.
- Consult the dealer or an experienced radio/TV technician for help.

**CAUTION: Changes or modifications not expressly approved by the party responsible for compliance could void the user's authority to operate the equipment.**

The device has been evaluated to meet general RF exposure requirement. The device can be used in portable exposure condition without restriction.

## DEAR JENSEN CUSTOMER

Selecting fine audio equipment such as the unit you've just purchased is only the start of your musical enjoyment. Now it's time to consider how you can maximize the fun and excitement your equipment offers. This manufacturer and the Electronic Industries Association's Consumer Electronics Group want you to get the most out of your equipment by playing it at a safe level. One that lets the sound come through loud and clear without annoying blaring or distortion and, most importantly, without affecting your sensitive hearing.

Sound can be deceiving. Over time your hearing "comfort level" adapts to higher volumes of sound. So what sounds "normal" can actually be loud and harmful to your hearing. Guard against this by setting your equipment at a safe level BEFORE your hearing adapts.

### **To establish a safe level:**

- Start your volume control at a low setting.
- Slowly increase the sound until you can hear it comfortably and clearly, and without distortion.

### **Once you have established a comfortable sound level:**

- Set the dial and leave it there.

Taking a minute to do this now will help to prevent hearing damage or loss in the future. After all, we want you listening for a lifetime.

### **We Want You Listening For a Lifetime**

Used wisely, your new sound equipment will provide a lifetime of fun and enjoyment. Since hearing damage from loud noise is often undetectable until it is too late, this manufacturer and the Electronic Industries Association's Consumer Electronics Group recommend you avoid prolonged exposure to excessive noise.



### **Customer's Record:**

The serial number of this product is found on its bottom. You should note the serial number of this unit in the space provided as a permanent record of your purchase to aid in identification in the event of theft or loss.

**Model Number: SMPS-900**

**Serial Number :**

## POWER SOURCE

### Power Connection

Before using your Portable Bluetooth Tailgate/Trolley Speaker, you should connect a power adaptor (included) with a rated output of DC 15V/2A to AC (mains) power.

1. Firmly and securely insert the DC plug of the adaptor to the DC IN Jack (#23).
2. Plug the adaptor's AC plugs into an AC outlet.
3. Power on the unit by switching the POWER Switch (#21) to ON. The POWER Indicator (#13) will light up.

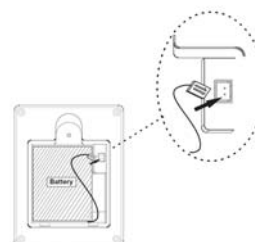


### NOTE:

When the unit is not operated by the AC power or unused for long periods of the time, please remove the power adaptor from the wall outlet and unplug from the SMPS-900.

### Battery Connection

1. Disconnect the power adaptor.
2. Remove the Battery door mounting screw by screw driver on the rear of unit and open the battery door.
3. Following the polarity diagram as soon on the figure, the battery plug is designed to fit this connector in only one orientation. Find the proper orientation and push down firmly until the connector completely fit.



### Charging instructions

This unit operates on a built-in Li-ion battery that can be recharged from a power adaptor (included) with a rated output of DC 15V/2A.

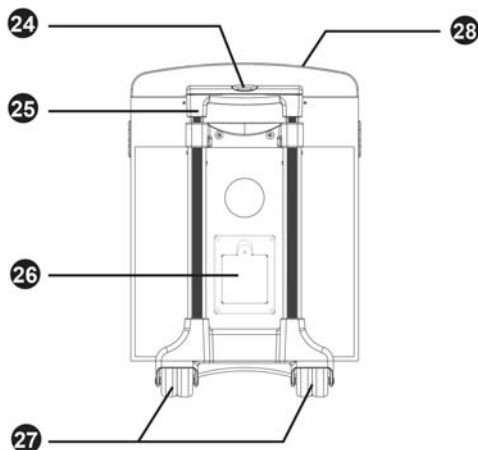
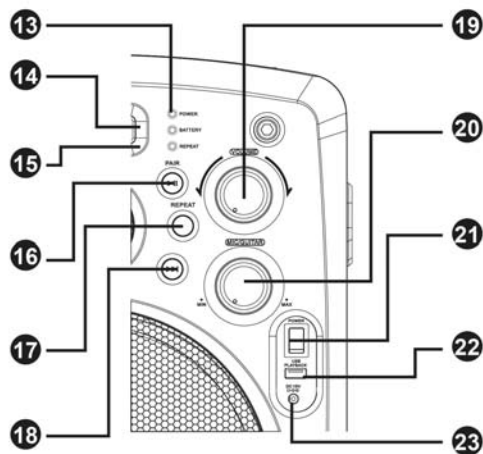
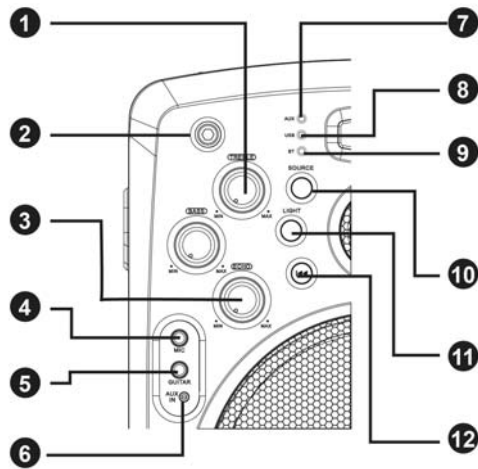
### Charging the Built-in Battery for First Time

1. Charge the built-in Li-ion battery a minimum of 4~5 hours prior to first use. Connect a power adaptor (see "Power connection") into the main unit and auto to charging the internal Li-ion battery.
2. The BATTERY indicator will solid light red in charging process. The BATTERY Indicator will turn to light green when the internal battery fully charged.

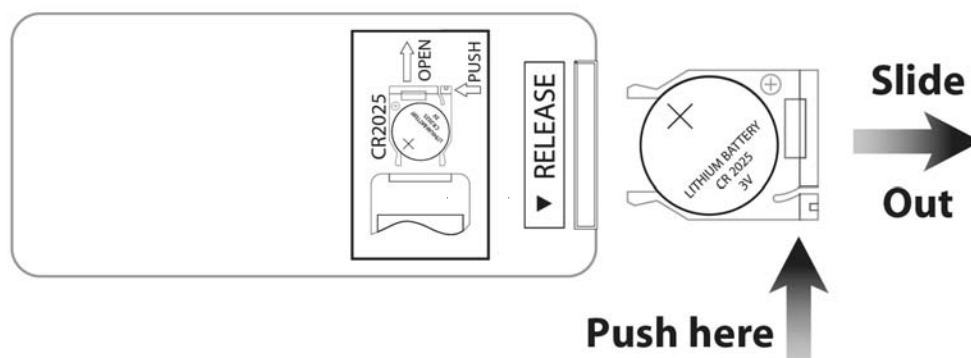
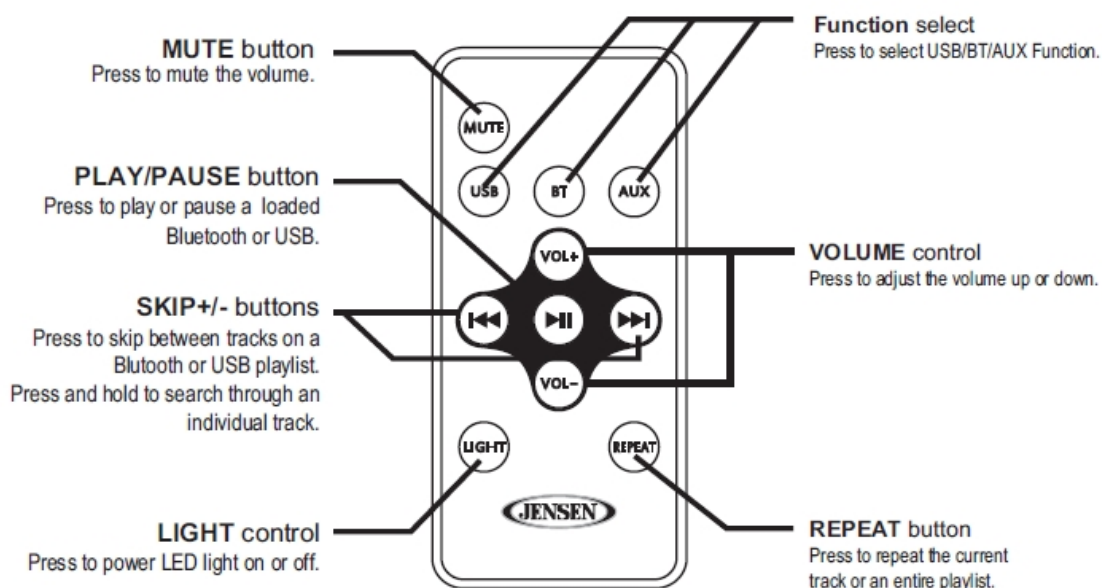
### Recharging the internal battery

After prolonged use, the internal battery will become weak and the operation may become intermittent. When the internal battery charge is low, the BATTERY indicator will turn "RED and FLASH" alerting you to recharge the internal battery as soon as possible.

## LOCATION OF CONTROLS



1. TREBLE Control
2. BASS Control
3. ECHO Control
4. MIC Input
5. GUITAR Input
6. AUX Jack
7. AUX Indicator
8. USB Indicator
9. Bluetooth Indicator
10. SOURCE Button
11. LIGHT Button
12. Skip- Button
13. POWER Indicator
14. BATTERY Indicator
15. REPEAT Indicator
16. PLAY/PAUSE/PAIR Button
17. Repeat Button
18. Skip+ Button
19. VOLUME Control
20. MIC/GUITAR Control
21. POWER Switch
22. USB Port
23. DC IN Jack
24. HANDLE Lock
25. HANDLE
26. BATTERY COMPARTMENT
27. MIC Input
28. WHEELS



The remote control operates on one CR2025 battery (included). To activate the remote control, remove the insulation tab inserted in the battery compartment. When the operation of the remote control becomes intermittent or unsatisfactory, replace the original battery with a new 3-volt lithium battery.

1. Press down on the compartment cover, slide out the battery holder from the remote control case.
2. Replace the 3V CR2025 battery. Be sure the battery is installed correctly. The remote will not work if the battery is installed with the wrong polarity.

**CAUTION:**

1. Danger of explosion if the battery is replaced incorrectly.
2. Replace only with the same or equivalent type battery.

**NOTE:** Only use a well-known brand of battery to ensure the longest life and best performance.



## **WARNING**

### **DO NOT INGEST BATTERY, CHEMICAL BURN HAZARD**

This product contains a coin/button cell battery. If the coin/button cell battery is swallowed, it can cause severe internal burns in just 2 hours and can lead to death. Keep new and used batteries away from children. If the battery compartment does not close securely, stop using the product and keep it away from children. If you think batteries might have been swallowed or placed inside any part of the body, seek immediate medical attention.

## **BLUETOOTH OPERATION**

### **Pairing to a Device and Playing Audio**

1. Press the POWER Switch to ON.
2. Press the SOURCE Button (#10) repeatedly to select Bluetooth mode. Bluetooth indicator (#9) will light up.
3. Press and hold the PAIR Button (#16),  
*The SMPS-900 will enter pairing mode and the Bluetooth indicator (#9) will begin flashing quickly.*
4. Turn on Bluetooth function of your device and enable the search or scan function to find JBS-600. (see your device's instructions to add or setup a Bluetooth device). Select "SMPS-900" from the device list when it appears on your device screen. If required, enter the pass code "0000" to pair (link) SMPS-900 with your device.  
Refer to the user's manual for your specific device for instructions on pairing and connecting Bluetooth devices.
5. If you are pairing (linking) your computer to the speaker using Bluetooth, you may need to set the SMPS-900 as your computer's default sound device.
6. When successfully paired, the Bluetooth indicator will light steadily and an audible chime will sound through the speaker.
7. If you want SMPS-900 change to pair with another Bluetooth Enable Device. Repeat steps 3 to 4.

### **PLAYING FROM A BLUETOOTH DEVICE**

You can play music from your Bluetooth device wirelessly to SMPS-900 after successfully pairing.

1. Selecting your favorite song, press the PLAY button on your Bluetooth device or the PLAY Button (#16) on SMPS-900 to play or pause the Bluetooth device playback.
2. Slowly adjust both the VOLUME (#19) of your SMPS-900 and your Bluetooth device until you reach a comfortable listening level.

#### **Notes:**

- Your Bluetooth enabled device will not play the music through the speaker, even if connected (linked), if the device does not support the A2DP Bluetooth profile.
- Remember to turn off the SMPS-900 when you have finished listening.
- Don't forget to switch off the power of your external audio device as well.

## USB PLAYER OPERATION

1. Switch the POWER Switch (#21) to ON.
2. Press the SOURCE Button (#10) repeatedly to select USB mode. The USB Indicator (#8) will light up.
3. Plug the USB flash driver into the USB port (#22) on the front of the unit. The USB device will playing automatically.
4. During USB playback, press the PLAY/PAUSE Button (#16) to pause USB play and press again to resume.
5. Press SKIP+ Button (#18) or SKIP- Button (#12) to select next or previous track.
6. Press and hold SKIP+ Button (#18) or SKIP- Button (#12) to search rapidly within a track to locate a specific passage.

## AUX OPERATION

You can play other music sources (iPod, MP3 or other digital audio players) through the speakers of the SMPS-900 by connecting the AUX IN Jack (#6) to your external player's audio out jack or headphone jack.

1. Plug one end of an audio cable (not included) into the AUX IN Jack (#6) and the other end of the cable to the headphone jack of your digital audio player.
2. Press the SOURCE Button (#10) repeatedly to select the AUX mode. The AUX Indicator (#7) will light up.
3. Start playing the device you plugged into the AUX IN Jack (#6).
4. Slowly adjust both the volume controls of the SMPS-900 and the external device until you reach a comfortable listening level.
5. Turn off your iPod, MP3 player etc. when finish listening.
6. Switch the POWER switch (#21) to OFF to turn the SMPS-900 off and unplug the AUX IN Jack (#6).

### Notes :

- If you connect the SMPS-900 to the Line-Out Jack of your external device, you only need to adjust the VOLUME CONTROL of your SMPS-900. If you connect to the Headphone Jack of your external device, you may need to adjust both the volume controls of your external device and the SMPS-900 to obtain the desirable listening level.
- Remember to turn off the SMPS-900 when you have finished listening. Don't forget to switch off the power of your external audio device as well.

## TROUBLE SHOOTING GUIDE

If you experience difficulties in the use of this clock radio, please check the following or call 1-800-777-5331 for Customer Service and support

PROBLEM	POSSIBLE CAUSE	REMEDY
<b>GENERAL</b>		
No sound in general.	Volume not adjusted.	Adjust the Volume knob.
	Source mode in wrong position.	Using the Source button (at the front panel), select the proper function as required.
	Power Adapter disconnected or loose.	Check the connection or the Power Adapter.
The unit does reset to operation of any button	Under the influence of electrostatic phenomenon, the product may malfunction and require user to disconnect	Turn off the unit, disconnect the mains plug, and reconnect after a few seconds.
<b>KARAOKE</b>		
Feedback is heard when singing	Microphone is too close to the unit or MIC volume is too high.	Move Microphone away from the unit or decrease MIC volume.
Microphone has no sound	Microphone not turned on.	Turn on the Microphone.
	Microphone volume turned all the way down.	Turn the Microphone volume up.
	Microphone connection loose.	Insert the Microphone plug totally to the MIC jack.
<b>BLUETOOTH</b>		
No sound when playing audio via Bluetooth	Your Bluetooth device has been paired properly.	Pairing your Bluetooth device according to the <b>“Pairing to a Device Section. and playing audio”</b>
	The volume control of your Bluetooth device is set at too low.	Increase the volume of your Bluetooth device.
	The volume control of the main unit is set at too low.	Increase the volume of the main unit to turn to your wish.
<b>USB</b>		
No sound in USB mode	Volume at minimum.	Adjust the volume knob.
	External device not connected properly.	Clear contacts pins and connect again.
<b>AUX</b>		
No sound in AUX mode	Volume at minimum.	Adjust the volume knob.
	External device not connected properly.	Clear contacts pins and connect again.

## SPECIFICATION

**Power Output** 30 Wrms

**Speakers** 8" Full range, 4 ohms

**AC Power Adapter**

AC input : 100-240V~ 50/60Hz

DC output: DC 15V  $\equiv$  2000mA  $\ominus$   $\oplus$

**Built-in Li-ion Battery** 11.1V, 6000mAh

**Remote Control** 1 x DC 3V  $\equiv$  CR2032 button cell (included)

**Bluetooth** V4.1, Support A2DP

**USB** maximum size 32GB, Support MP3 Files

**Dimensions (H x W x D)** . . . . . 481mm (H) x 327mm (W) x 284mm (D)



At Spectra, environmental and social responsibility is a core value of our business. We are dedicated to continuous implementation of responsible initiatives with an aim to conserve and maintain the environment through responsible recycling.

Please visit us at <http://www.spectraintl.com/green.htm> for more information on Spectra's green initiatives or to find a recycler in your area.

The Bluetooth® word mark and logos are registered trademarks owned by Bluetooth SIG, Inc. and any use of such marks by Spectra Merchandising International, Inc. is under license. Other trademarks and trade names are those of their respective owners.

## 90 DAY LIMITED WARRANTY AND SERVICE VALID IN THE U.S.A. ONLY

SPECTRA MERCHANDISING INTERNATIONAL, INC. warrants this unit to be free from defective materials or factory workmanship for a period of 90 days from the date of original customer purchase and provided the product is utilized within the U.S.A. This warranty is not assignable or transferable. Our obligation under this warranty is the repair or replacement of the defective unit or any part thereof, except batteries, when it is returned to the SPECTRA Service Department, accompanied by proof of the date of original consumer purchase, such as a duplicate copy of a sales receipt.

You must pay all shipping charges required to ship the product to SPECTRA for warranty service. If the product is repaired or replaced under warranty, the return charges will be at SPECTRA's expense. There are no other express warranties other than those stated herein.

This warranty is valid only in accordance with the conditions set forth below:

1. The warranty applies to the SPECTRA product only while:
  - a. It remains in the possession of the original purchaser and proof of purchase is demonstrated.
  - b. It has not been subjected to accident, misuse, abuse, improper service, usage outside the descriptions and warnings covered within the user manual or non-SPECTRA approved modifications.
  - c. Claims are made within the warranty period.
2. This warranty does not cover damage or equipment failure caused by electrical wiring not in compliance with electrical codes or SPECTRA user manual specifications, or failure to provide reasonable care and necessary maintenance as outlined in the user manual.
3. Warranty of all SPECTRA products applies to residential use only and is void when products are used in nonresidential environment or installed outside the United States.

This warranty gives you specific legal rights, and you may also have other rights which vary from state to state. TO OBTAIN SERVICE please remove all batteries (if any) and pack the unit carefully and send it freight prepaid to SPECTRA at the address shown below. IF THE UNIT IS RETURNED WITHIN THE WARRANTY PERIOD shown above, please include a proof of purchase (dated cash register receipt) so that we may establish your eligibility for warranty service and repair of the unit without cost. Also include a note with a description explaining how the unit is defective. A customer service representative may need to contact you regarding the status of your repair, so please include your name, address, phone number and email address to expedite the process.

IF THE UNIT IS OUTSIDE THE WARRANTY PERIOD, please include a check for **\$85.00** to cover the cost of repair, handling and return postage. All out of warranty returns must be sent prepaid.

It is recommended that you contact SPECTRA first at 1-800-777-5331 or by email at [custserv@spectraintl.com](mailto:custserv@spectraintl.com) for updated information on the unit requiring service. In some cases the model you have may be discontinued, and SPECTRA reserves the right to offer alternative options for repair or replacement.

SPECTRA MERCHANDISING INTERNATIONAL, INC.

4230 North Normandy Avenue,

Chicago, IL60634, USA. 1-800-777-5331

To register your product, visit the link on the website below to enter your information.

<http://www.spectraintl.com/wform.htm>

0517

Printed in China