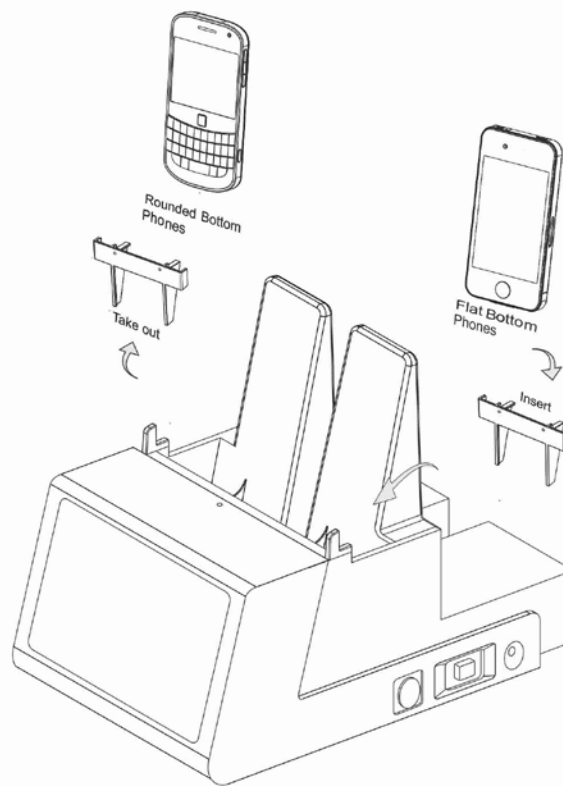


# Tablet Bluetooth Speaker

User's Guide

MODEL:  
CR13



- ▶ Bluetooth Function for Music Share
- ▶ Aux-In for External Device ( private mobile)
- ▶ USB for Mobile Phone Battery Charging
- ▶ Built-in Lithium-battery for unit power

## Warnings and Precautions

# Warnings and Precautions

**Warning:** Changes or modifications to this unit not expressly approved by the party responsible for compliance could void the user's authority to operate the equipment.

**NOTE:** This equipment has been tested and found to comply with the limits for a Class B digital device, pursuant to Part 15 of the FCC Rules. These limits are designed to provide reasonable protection against harmful interference in a residential installation. This equipment generates, uses and can radiate radio frequency energy and, if not installed and used in accordance with the instructions, may cause harmful interference to radio communications.

However, there is no guarantee that interference will not occur in a particular installation. If this equipment does cause harmful interference to radio or television reception, which can be determined by turning the equipment off and on, the user is encouraged to try to correct the interference by one or more of the following measures:

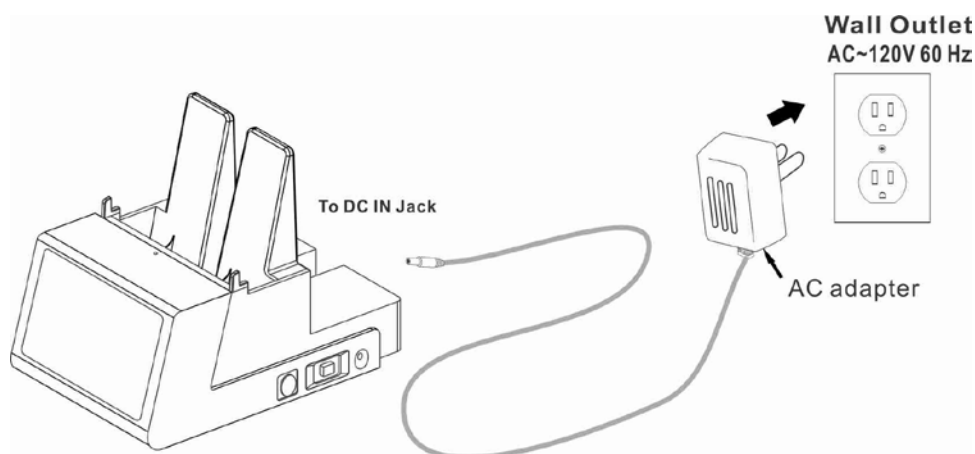
- Reorient or relocate the receiving antenna.
- Increase the separation between the equipment and receiver.
- Connect the equipment into an outlet on a circuit different from that to which the receiver is connected.
- Consult the dealer or an experienced radio/TV technician for help.

This device complies with Part 15 of the FCC Rules. Operation is subject to the following two conditions: (1) this device may not cause harmful interference, and (2) this device must accept any interference received, including interference that may cause undesired operation.

# Quick Start On Charging Battery

## Connecting unit to power outlet

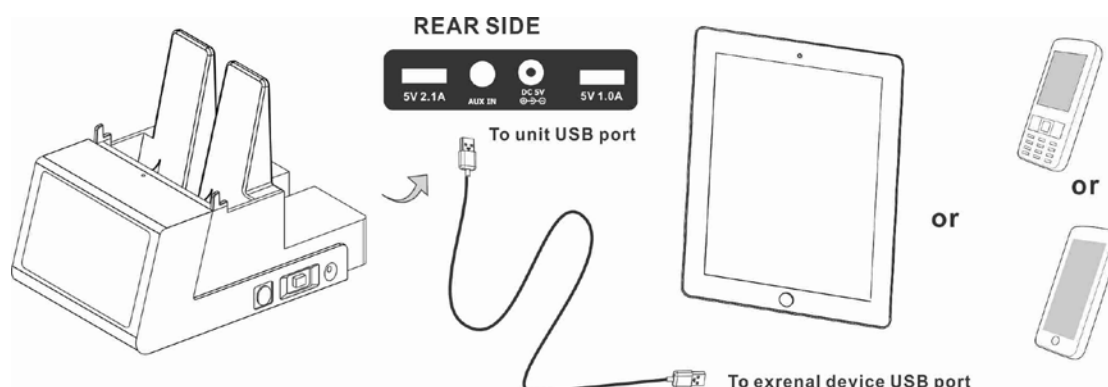
Plug the small end of included AC/DC power adapter into the **DC POWER INPUT** on the rear of unit and connect power adapter to an AC power outlet to power the unit to operate unit and charging the unit built-in battery. Press the **STANDBY** button to power on / off.



## Use built-in battery for unit main power

1. With the unit AC power connected.
2. At this moment, the battery will auto charging start.
3. After approximately 3-5 hours, the batteries are fully charged.
4. After fully charged battery, remove the power adapter.
5. At this moment, the unit can operate by built-in battery.

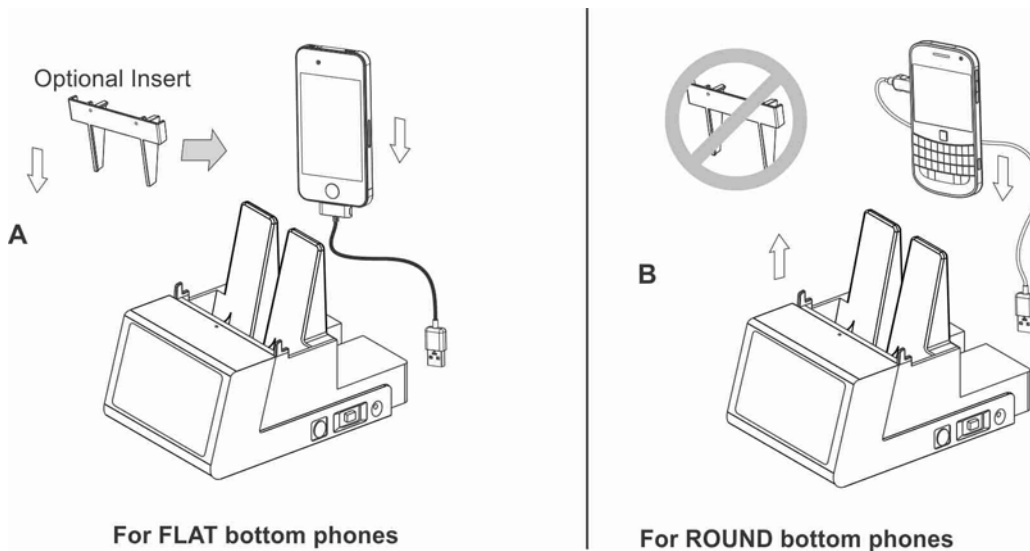
## Connect your device to proper USB charging port



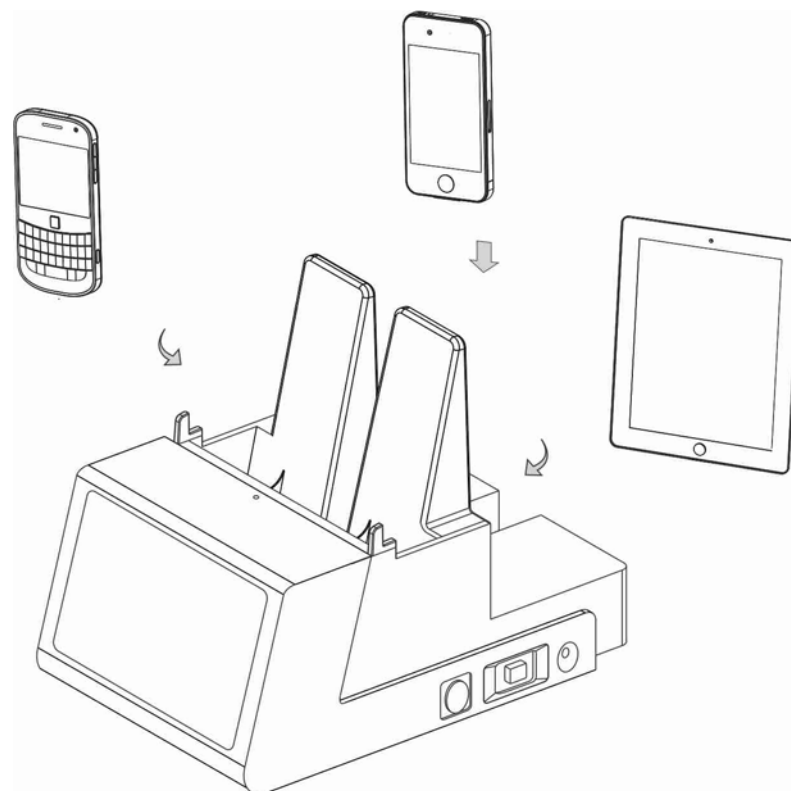
# Quick Start OnFixing Your Device

## Using the optional insert / cradle

Your phone's shape will determine if an insert is needed. Take the insert and place it to the cradle when use flat bottom phones. Round bottom phones do not need the insert.

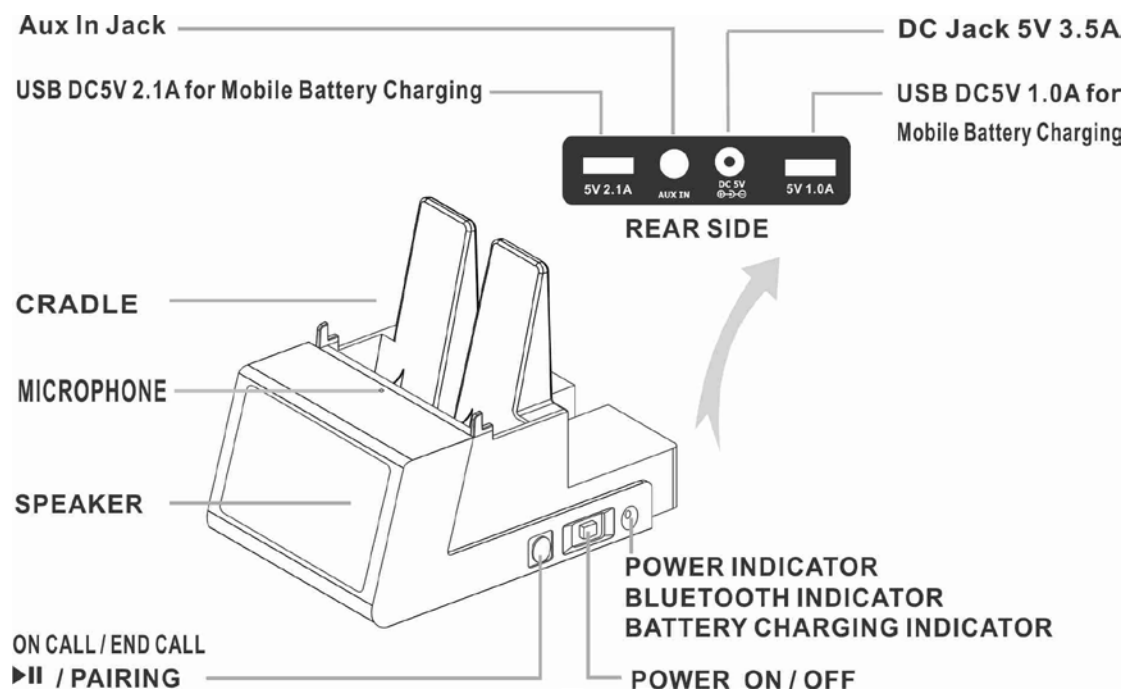


Placing the device on the unit (two ways of placing: vertical or horizontal):



# Location of Control

---



# Main Operations

---

## Power on / off

>Slide **POWER** switch to on / off the unit.

## Play/Pause

>When music play, press the **PLAY/PAUSE** button.

## On call / End call

>When phone calling, press the to **On call / End call** button.

## Aux In

>Connect the **AUX IN** jack for external device sound output

## Mobile phone Battery charging

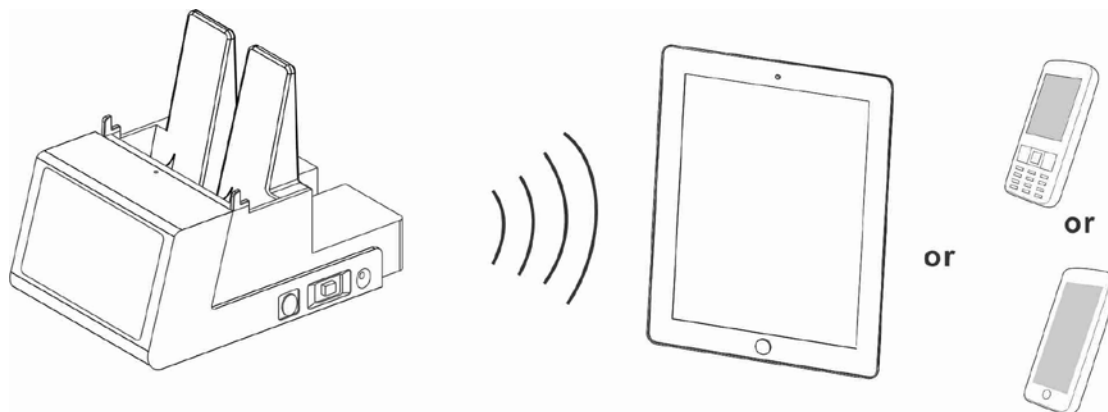
>Connect the **USB port** for mobile phone battery charging.

# Using Bluetooth for Music Share

---

## Pairing with Your Mobile Phone

Your unit connected to mobile phones using a procedure by following a few simple steps, a mobile phone can be paired with the **CR13** in a matter of seconds.



## Setup Your **Tablet Bluetooth Speaker** on **BLUETOOTH** mode

1. Power on unit by sliding the **POWER** switch to on.
2. Remove the Aux cable that the **BLUETOOTH** indicator flash.
3. Finish this simply setting and go to next step below.

## Set your phone to 'discover' the your unit

1. First make sure that Bluetooth is activated on your mobile phone.
2. Then set your phone to discover your unit.
3. This usually involves going to a 'setup,' 'connect' or 'Bluetooth' menu on your phone and selecting the option to 'discover' or 'add' a Bluetooth device.
4. Your phone will find the unit under name "**CR12E**".
5. Your phone then asks if you want to pair with the unit.
6. Accept by pressing 'yes' or 'ok' on the phone.
7. Your phone will confirm when pairing is complete.
8. When successful pairing, the **BLUETOOTH** indicator will light.

**Warning!** In case of unsuccessful pairing, the **BLUETOOTH** indicator would flash continue. You must follow the previous step to setting again.

## Playing Audio Via Bluetooth

1. When successful pairing, Press the ►|| button to play or pause audio files from your Bluetooth device.
2. If press the ►|| button cannot play and no music listening. You must go to your mobile phone "**Music Centre or Media Player**" to manual search music. Press the **PLAY** icon of your phone to start playing.
3. After all setting, the music of mobile phone will sound through your unit.

**Warning!** Music will automatically be paused when you have an incoming call. When call is ended it will start playing again.



# Answer the Call and End the Call

After having paired a device when a call is received, a ringtone will sound through the unit speaker.

1. Press the **ANSWER/END CALL** button to accept the call or accept the call with the native control on the connected device.
2. The coming call received through the device will now heard through the speaker.
3. To end the call, press **ANSWER/END CALL** button or end the call using the native controls on the connected device.

# Using Aux - In (Audio in / Line in)

## Using the AUX In ( Line-in / audio In) Jack

You can play your portable audio device with a standard 3.5mm headphone jack through the unit via the AUX In jack

1. Plug one end of a standard audio patch cord into the headphone or line-out jack on your device and the other end of the patch cord into the unit's AUX-in Jack located on the back of the unit.
2. Slide the **POWER** switch to turn on unit.
3. Turn on and play your personal device;
4. You may need to adjust the volume on your external device as well.
5. To turn off the music, Slide the **POWER** switch to off position.

