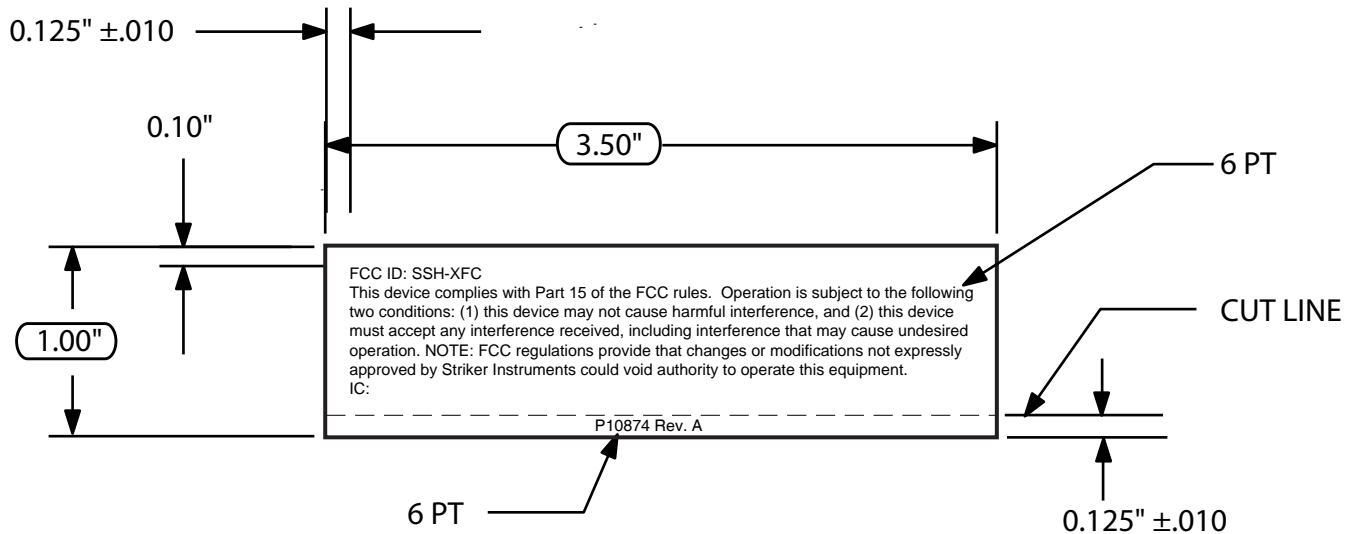


NOTES:

1. INTERPRET DRAWING PER AMERICAN SOCIETY OF MECHANICAL ENGINEERS (ASME) Y14.5M-1994 STANDARD.
2. MATERIAL: .002 BRIGHT SILVER POLYESTER LAMINATED W/.001 IMPRINTABLE POLYESTER (COMPUCAL OR EQUIV.)
3. ADHESIVE: FLEXCON V 23 OR EQUIV. PSA BACK SIDE
4. GRAPHIC: BLACK ON SILVER
5. TEXT: HELVETICA

REVISIONS			
LTR	DESCRIPTION	DATE	APPROVED
A			



UNLESS OTHERWISE SPECIFIED DIMENSIONS ARE IN INCHES
 DECIMALS .XX ±.01 XXX ±.005 ANGLES ±.5°

REQUIREMENTS FOR FINISHED PARTS UNLESS OTHERWISE SPECIFIED
 ALL DIMENSIONS APPLY AFTER COATING
 ON ALL PLATED PARTS CORNERS MUST BEND SMOOTHLY

TOLERANCES FRACTIONAL..... ±1.64
 CORNER BREAK (EXTERNAL)(DEBUR)..... .002 TO 0.20R (OR EQUIVALENT)
 FILLET RADII (INTERNAL)..... .002 TO 0.20R
 THREAD CHAMFER (OR CSK)..... 1 TO 1/2 THREADS DEEP
 SURFACE INTERSECTIONS..... ±.010 MAX
 HOLES AND FEATURES TO BE ON THE GENERAL FINISH..... 63 MAX

CONCENTRICITY .006 TIR
 PERPENDICULARITY .006 IN/IN TOTAL (MAX)
 PARALLELISM .010 (MAX)
 ROUNDNESS .006 (MAX)
 FLATNESS .006 IN/IN (MAX)
 STRAIGHTNESS .001 IN/IN (MAX)
 SYMMETRY .020 (MAX)

THIRD ANGLE PROJECTION

DRAWN BY: R. CARDENAS	DATE 06/26/09
---------------------------------	-------------------------

		STRYKER ENDOSCOPY 5900 OPTICAL COURT SAN JOSE, CA 95138	
TITLE: LABEL, CROSSFIRE FCC			
SIZE A	DWG. NO. P10874	REV. A	
-DO NOT SCALE DRAWING-		SHEET 1 OF 1	

