

System check	6500MHz
Measurement Report for Device, FRONT, Validation band, CW, Channel 6500 (6500.0 MHz)	

Device Under Test Properties

Model, Manufacturer	Dimensions [mm]	IMEI	DUT Type
Device,	6.0 x 16.0 x 800.0		Phone

Exposure Conditions

Phantom Section, TSL	Position, Test Distance [mm]	Band	Group, UID	Frequency [MHz], Channel Number	Conversion Factor	TSL Conductivity [S/m]	TSL Permittivity
Flat, HSL	FRONT, 5.00	Validation band	CW, 0--	6500.0, 6500	5.57	6.08	84.0

Hardware Setup

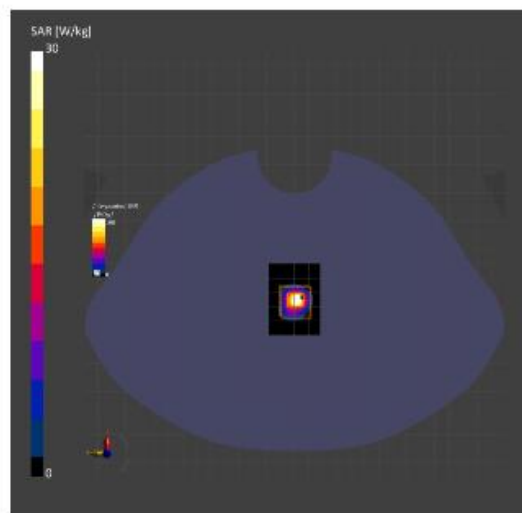
Phantom	TSL, Measured Date	Probe, Calibration Date	DAE, Calibration Date
Twin-SAM V4.0 (80deg probe tilt) - 1559	HEBL-600-10000 Charge:xxxx, --	EXSDV4 - SN8708, 2023-10-30	DAE4 3n546, 2023-09-15

Scans Setup

	Area Scan	Zoom Scan
Grid Extants [mm]	51.0 x 36.0	22.0 x 22.0 x 22.0
Grid Steps [mm]	8.5 x 6.0	8.4 x 8.4 x 1.2
Sensor Surface [mm]	8.0	1.4
Graded Grid	Yes	Yes
Grading Ratio	1.5	1.2
MAIA	N/A	N/A
Surface Detection	VMS + 6p	VMS + 6p
Scan Method	Measured	Measured

Measurement Results

	Area Scan	Zoom Scan
Date	2024-08-07, 8:59	2024-08-07, 9:13
psSAR1 g [W/kg]	27.5	27.4
psSAR1 0g [W/kg]	5.14	5.13
psPDab (1.0cm2, sq) [W/m2]		819
psPDab (4.0cm2, sq) [W/m2]		148
Power Drift [dB]	0.02	-0.02
Power Scaling	Disabled	Disabled
Scaling Factor [dB]		
TSL Correction	No correction	No correction
M2/M1 [dB]		59.0
Dist 3dB Peak [mm]		4.8



Wi-Fi6E

Limb	Left
Measurement Report for Device, EDGE LEFT, U-NII-5, IEEE 802.11ax (160MHz, MCS0, 99pc duty cycle), Channel 47 (6185.0 MHz)	

Device Under Test Properties

Model, Manufacturer	Dimensions [mm]	IMEI	DUT Type
Device,	165.0 x 78.0 x 17.0		Phone

Exposure Conditions

Phantom Section, TSL	Position, Test Distance [mm]	Band	Group, UID	Frequency [MHz], Channel Number	Conversion Factor	TSL Conductivity [S/m]	TSL Permittivity
Flat, HSL	EDGE LEFT, 0.00	U-NII-5	WLAN, 10755-AAC	6185.0, 47	5.65	5.33	37.2

Hardware Setup

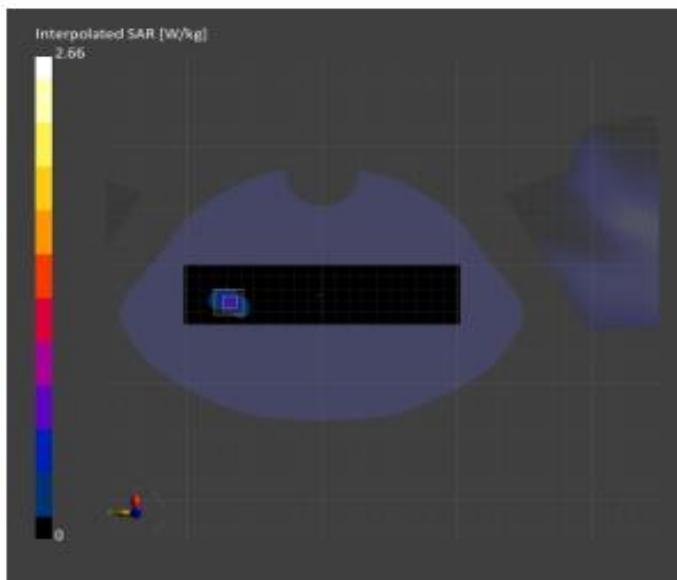
Phantom	TSL, Measured Date	Probe, Calibration Date	DAE, Calibration Date
Twin-SAM V5.0 (30deg probe tilt) - 1559	HBBL-600-10000 Charge:xxxx, 2024-Jul-12	EX3DV4 - SN3708, 2023-10-30	DAE4 Sn546, 2023-09-15

Scans Setup

	Area Scan	Zoom Scan
Grid Extents [mm]	51.0 x 204.0	22.0 x 22.0 x 22.0
Grid Steps [mm]	8.5 x 8.5	3.4 x 3.4 x 1.4
Sensor Surface [mm]	3.0	1.4
Graded Grid	Yes	Yes
Grading Ratio	1.5	1.4
MAIA	Y	Y
Surface Detection	VMS + 6p	VMS + 6p
Scan Method	Measured	Measured

Measurement Results

	Area Scan	Zoom Scan
Date	2024-08-07, 13:17	2024-08-07, 13:27
psSAR1g [W/kg]	0.604	0.643
psSAR10g [W/kg]	0.308	0.305
psPDab (1.0cm2, sq) [W/m2]		5.43
psPDab (4.0cm2, sq) [W/m2]		3.78
Power Drift [dB]	-0.13	0.09
Power Scaling	Disabled	Disabled
Scaling Factor [dB]		
TSL Correction	No correction	No correction
M2/M1 [%]		50.5
Dist 3dB Peak [mm]		5.6



Wi-Fi6E

Limb	Right
-------------	--------------

Measurement Report for Device, EDGE RIGHT, U-NII-6, IEEE 802.11ax (160MHz, MCS0, 99pc duty cycle), Channel 111 (6505.0 MHz)

Device Under Test Properties

Model, Manufacturer	Dimensions [mm]	IMEI	DUT Type
Device,	165.0 x 78.0 x 17.0		Phone

Exposure Conditions

Phantom Section, TSL	Position, Test Distance [mm]	Band	Group, UID	Frequency [MHz], Channel Number	Conversion Factor	TSL Conductivity [S/m]	TSL Permittivity
Flat, HSL	EDGE RIGHT, 0.00	U-NII-6	WLAN, 10755-AAC	6505.0, 111	5.65	5.78	36.5

Hardware Setup

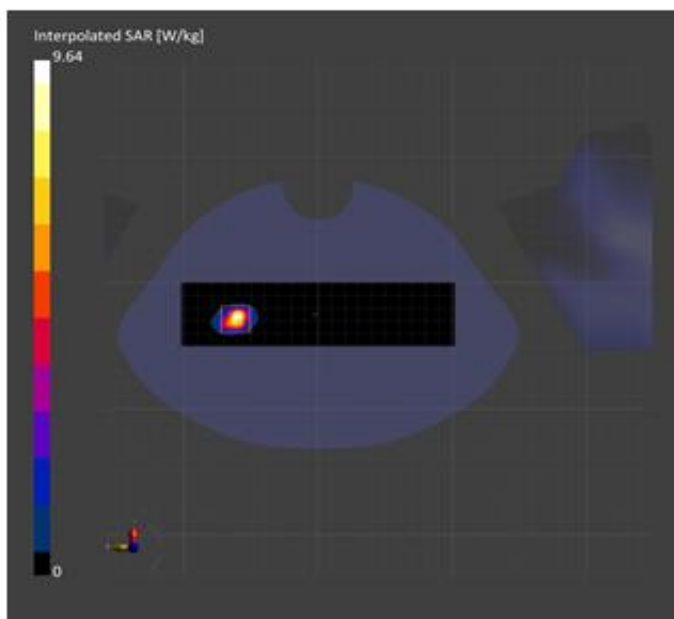
Phantom	TSL, Measured Date	Probe, Calibration Date	DAE, Calibration Date
Twin-SAM V5.0 (30deg probe tilt) - 1559	HBBL-600-10000 Charge:xxxx, 2024-Jul-12	EX3DV4 - SN3708, 2023-10-30	DAE4 Sn546, 2023-09-15

Scans Setup

	Area Scan	Zoom Scan
Grid Extents [mm]	51.0 x 204.0	22.0 x 22.0 x 22.0
Grid Steps [mm]	8.5 x 8.5	3.4 x 3.4 x 1.4
Sensor Surface [mm]	3.0	1.4
Graded Grid	Yes	Yes
Grading Ratio	1.5	1.4
MAIA	Y	N/A
Surface Detection	All points	VMS + 6p
Scan Method	Measured	Measured

Measurement Results

	Area Scan	Zoom Scan
Date	2024-08-07, 11:45	2024-08-07, 11:55
psSAR1g [W/kg]	1.29	1.32
psSAR10g [W/kg]	0.429	0.475
psPDab (1.0cm2, sq) [W/m2]		17.2
psPDab (4.0cm2, sq) [W/m2]		9.09
Power Drift [dB]	0.06	-0.07
Power Scaling	Disabled	Disabled
Scaling Factor [dB]		
TSL Correction	No correction	No correction
M2/M1 [%]		51.0
Dist 3dB Peak [mm]		4.3



Wi-Fi6E

Limb	Right
-------------	--------------

Measurement Report for Device, EDGE RIGHT, U-NII-7, IEEE 802.11ax (160MHz, MCS0, 99pc duty cycle), Channel 175 (6825.0 MHz)

Device Under Test Properties

Model, Manufacturer	Dimensions [mm]	IMEI	DUT Type
Device,	165.0 x 78.0 x 17.0		Phone

Exposure Conditions

Phantom Section, TSL	Position, Test Distance [mm]	Band	Group, UID	Frequency [MHz], Channel Number	Conversion Factor	TSL Conductivity [S/m]	TSL Permittivity
Flat, HSL	EDGE RIGHT, 0.00	U-NII-7	WLAN, 10755-AAC	6825.0, 175	5.65	6.22	35.9

Hardware Setup

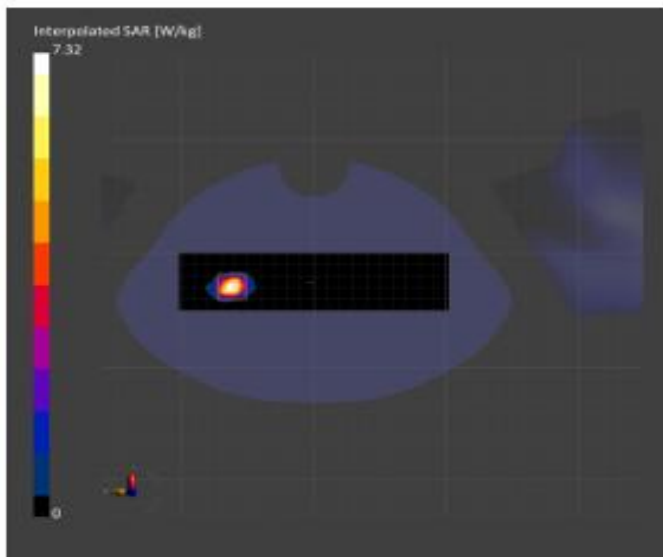
Phantom	TSL, Measured Date	Probe, Calibration Date	DAE, Calibration Date
Twin-SAM VS.0 (30deg probe tilt) - 1559	HBBL-600-10000 Charge:xxxx, 2024-Jul-12	EX3DV4 - SN3708, 2023-10-30	DAE4 Sn546, 2023-09-15

Scans Setup

	Area Scan	Zoom Scan
Grid Extents [mm]	51.0 x 204.0	22.0 x 22.0 x 22.0
Grid Steps [mm]	8.5 x 8.5	3.4 x 3.4 x 1.4
Sensor Surface [mm]	3.0	1.4
Graded Grid	Yes	Yes
Grading Ratio	1.5	1.4
MAIA	Y	N/A
Surface Detection	VMS + 6p	VMS + 6p
Scan Method	Measured	Measured

Measurement Results

	Area Scan	Zoom Scan
Date	2024-08-07, 12:06	2024-08-07, 12:17
psSAR1g [W/kg]	0.944	1.18
psSAR10g [W/kg]	0.350	0.316
psPDab (1.0cm2, sq) [W/m2]		11.8
psPDab (4.0cm2, sq) [W/m2]		6.25
Power Drift [dB]	-0.13	-0.14
Power Scaling	Disabled	Disabled
Scaling Factor [dB]		
TSL Correction	No correction	No correction
M2/M1 [%]		48.1
Dist 3dB Peak [mm]		4.8



Wi-Fi6E

Limb	Right
-------------	--------------

Measurement Report for Device, EDGE RIGHT, U-NII-B, IEEE 802.11ax (160MHz, MCS0, 99pc duty cycle), Channel 207 (6985.0 MHz)

Device Under Test Properties

Model, Manufacturer	Dimensions [mm]	IMEI	DUT Type
Device,	165.0 x 78.0 x 17.0		Phone

Exposure Conditions

Phantom Section, TSL	Position, Test Distance [mm]	Band	Group, IID	Frequency [MHz], Channel Number	Conversion Factor	TSL Conductivity [S/m]	TSL Permittivity
Flat, HSL	EDGE RIGHT, 0.00	U-NII-B	WLAN, 10755-AAC	6985.0, 207	5.65	6.37	35.7

Hardware Setup

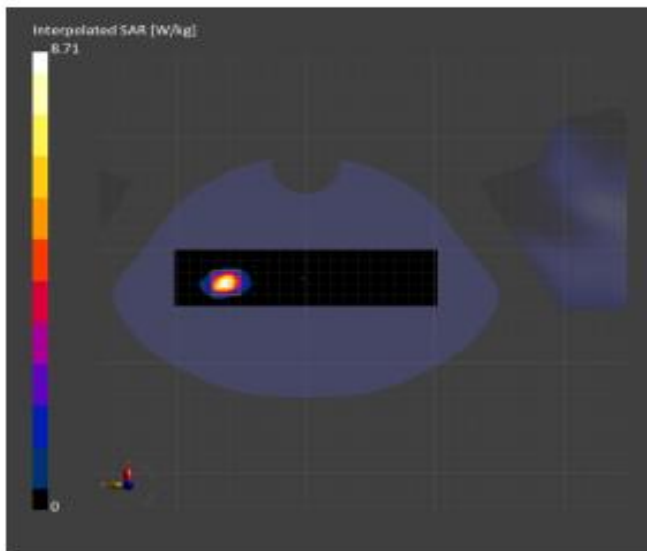
Phantom	TSL, Measured Date	Probe, Calibration Date	DAE, Calibration Date
Twin-SAM V5.0 (30deg probe tilt) - 1559	HBL-600-10000 Charge:xxxx, 2024-Jul-12	EX3DV4 - SN3708, 2023-10-30	DAE4 Sn546, 2023-09-15

Scans Setup

	Area Scan	Zoom Scan
Grid Extents [mm]	51.0 x 204.0	22.0 x 22.0 x 22.0
Grid Steps [mm]	8.5 x 8.5	3.4 x 3.4 x 1.4
Sensor Surface [mm]	3.0	1.4
Graded Grid	Yes	Yes
Grading Ratio	1.5	1.4
MAIA	Y	N/A
Surface Detection	VMS + 6p	VMS + 6p
Scan Method	Measured	Measured

Measurement Results

	Area Scan	Zoom Scan
Date	2024-08-07, 12:49	2024-08-07, 13:00
psSAR1g [W/kg]	1.12	1.39
psSAR10g [W/kg]	0.307	0.323
psPDab (1.0cm2, sq) [W/m2]		13.9
psPDab (4.0cm2, sq) [W/m2]		7.57
Power Drift [dB]	0.07	-0.02
Power Scaling	Disabled	Disabled
Scaling Factor [dB]		
TSL Correction	No correction	No correction
M2/M1 [dB]		47.2
Dist 3dB Peak [mm]		4.6



Wi-Fi6E (Modified prototype worst case)

Limb	Right
-------------	--------------

Measurement Report for Device, EDGE RIGHT, U-NII-6, IEEE 802.11ax (160MHz, MCS0, 99pc duty cycle), Channel 111 (6505.0 MHz)

Device Under Test Properties

Model, Manufacturer	Dimensions [mm]	IMEI	DUT Type
Device,	165.0 x 78.0 x 17.0		Phone

Exposure Conditions

Phantom Section, TSL	Position, Test Distance [mm]	Band	Group, UID	Frequency [MHz], Channel Number	Conversion Factor	TSL Conductivity [S/m]	TSL Permittivity
Flat, HSL	EDGE RIGHT, 0.00	U-NII-6	WLAN, 10755--AAC	6505.0, 111	5.65	5.78	36.5

Hardware Setup

Phantom	TSL, Measured Date	Probe, Calibration Date	DAE, Calibration Date
Twin-SAM V5.0 (30deg probe tilt) - 1559	HBBL-600-10000 Charge:xxxx, 2024-Jul-12	EX3DV4 - SN3708, 2023-10-30	DAE4 Sn546, 2023-09-15

Scans Setup

	Area Scan	Zoom Scan
Grid Extents [mm]	51.0 x 204.0	22.0 x 22.0 x 22.0
Grid Steps [mm]	8.5 x 8.5	3.4 x 3.4 x 1.4
Sensor Surface [mm]	3.0	1.4
Graded Grid	Yes	Yes
Grading Ratio	1.5	1.4
MAIA	Y	Y
Surface Detection	VMS + 6p	VMS + 6p
Scan Method	Measured	Measured

Measurement Results

	Area Scan	Zoom Scan
Date	2024-08-07, 15:31	2024-08-07, 15:41
psSAR1g [W/kg]	0.666	0.735
psSAR10g [W/kg]	0.193	0.243
psPDab (1.0cm2, sq) [W/m2]		7.35
psPDab (4.0cm2, sq) [W/m2]		4.72
Power Drift [dB]	0.10	0.03
Power Scaling	Disabled	Disabled
Scaling Factor [dB]		
TSL Correction	No correction	No correction
M2/M1 [dB]		51.6
Dist 3dB Peak [mm]		6.1

