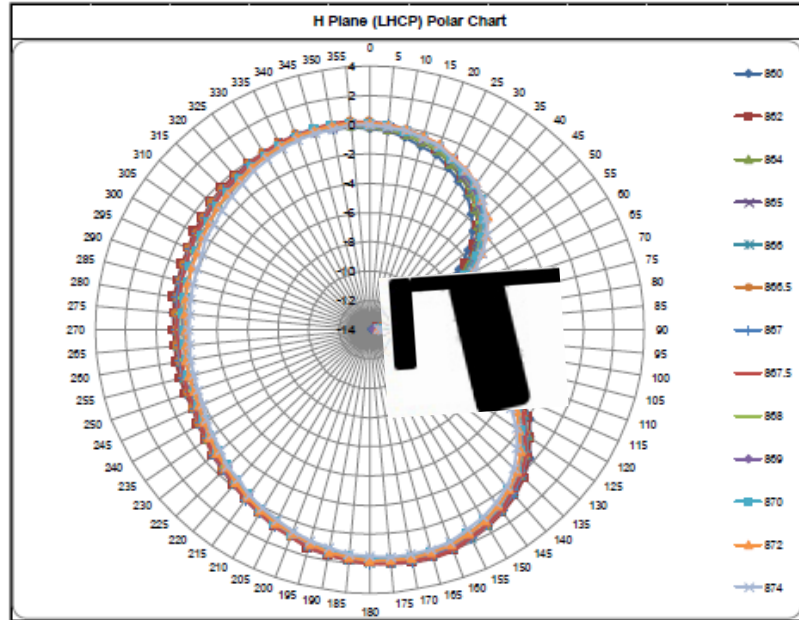
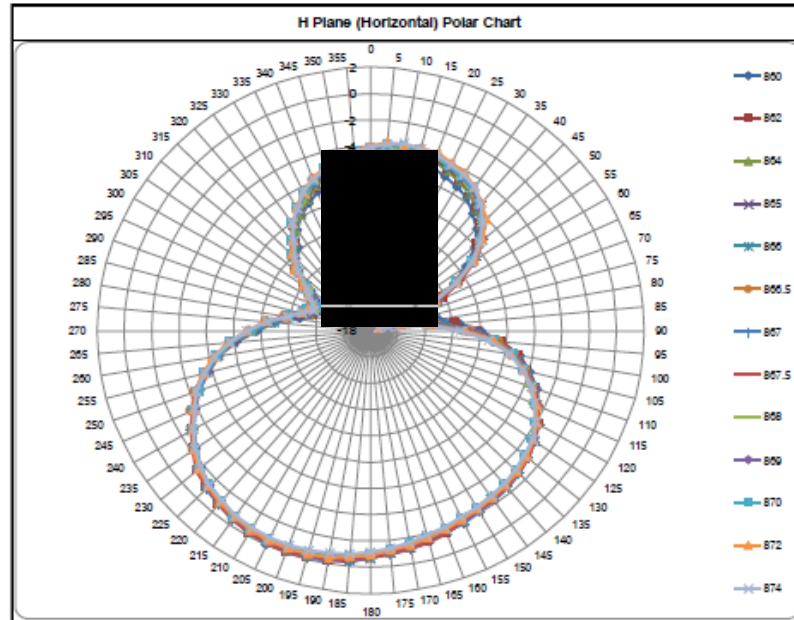


(1) LHCP



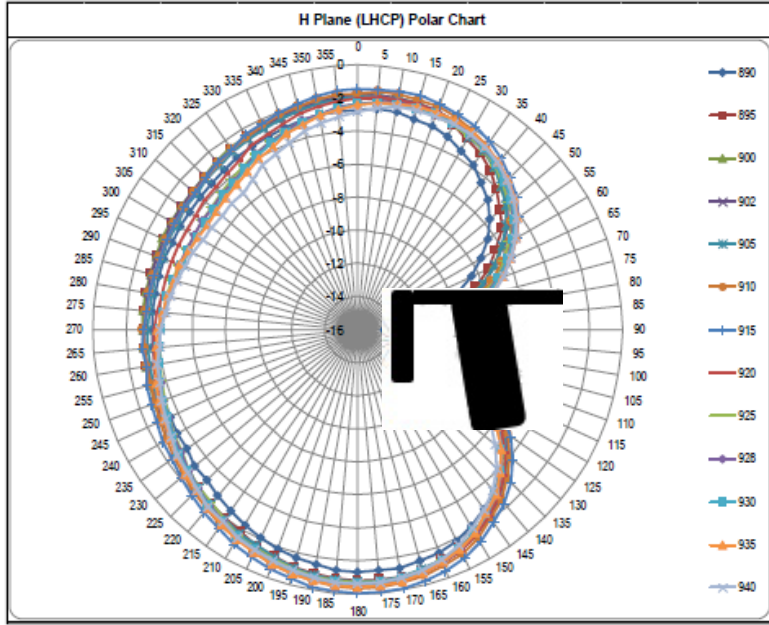
H Plane (LHCP)									
No	Frequency [MHz]	Maximum Value			Minimum Value			Avg. Gain [dBi]	Efficiency [%]
		Θ [Deg]	Φ [Deg]	Value[dBi]	Θ [Deg]	Φ [Deg]	Value[dBi]		
1	860	90	170	2.06	90	80	-13.88	-0.88	81.72
2	862	90	170	2.15	90	80	-13.41	-0.77	83.76
3	864	90	170	1.93	90	85	-13.52	-0.96	80.26
4	865	90	170	1.99	90	85	-13.20	-0.92	80.90
5	866	90	170	2.01	90	85	-13.53	-0.87	81.91
6	866.5	90	170	2.06	90	85	-13.13	-0.84	82.48
7	867	90	170	2.12	90	80	-13.28	-0.81	82.97
8	867.5	90	170	2.08	90	85	-13.39	-0.80	83.26
9	868	90	170	1.77	90	85	-13.57	-1.13	77.14
10	869	90	170	1.77	90	85	-13.71	-1.10	77.59
11	870	90	165	1.78	90	85	-13.28	-1.08	77.99
12	872	90	170	1.83	90	85	-13.44	-1.04	78.71
13	874	90	170	1.60	90	85	-13.37	-1.26	74.82

(2) H Pol



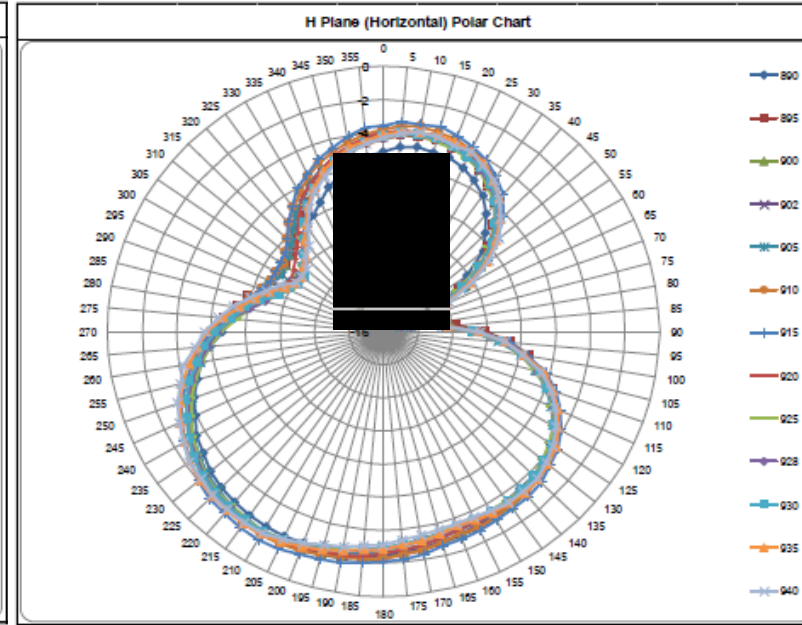
H Plane (Horizontal)									
No	Frequency [MHz]	Maximum Value			Minimum Value			Avg. Gain [dBi]	Efficiency [%]
		Θ [Deg]	Φ [Deg]	Value[dBi]	Θ [Deg]	Φ [Deg]	Value[dBi]		
1	860	90	200	-0.16	90	295	-14.38	-4.37	36.55
2	862	90	200	0.01	90	75	-14.20	-4.21	37.94
3	864	90	200	-0.24	90	75	-15.01	-4.35	36.75
4	865	90	200	-0.20	90	75	-14.87	-4.27	37.37
5	866	90	200	-0.16	90	75	-15.82	-4.22	37.87
6	866.5	90	200	-0.18	90	75	-15.38	-4.17	38.28
7	867	90	205	-0.10	90	75	-15.36	-4.11	38.77
8	867.5	90	200	-0.09	90	75	-15.86	-4.11	38.82
9	868	90	195	-0.46	90	75	-15.91	-4.39	36.37
10	869	90	200	-0.42	90	75	-16.43	-4.36	36.67
11	870	90	200	-0.37	90	75	-16.28	-4.31	37.06
12	872	90	205	-0.37	90	75	-17.37	-4.23	37.80
13	874	90	205	-0.56	90	75	-17.42	-4.39	36.36

(1) LHCP



H Plane (LHCP)									
No	Frequency [MHz]	Maximum Value			Minimum Value			Avg. Gain [dBi]	Efficiency [%]
		Θ [Deg]	Φ [Deg]	Value[dBi]	Θ [Deg]	Φ [Deg]	Value[dBi]		
1	890	90	180	-1.29	90	90	-14.40	-3.66	43.04
2	895	90	175	-0.77	90	90	-12.96	-3.08	49.22
3	900	90	170	-0.64	90	90	-12.61	-2.92	51.01
4	902	90	175	-0.63	90	95	-12.48	-2.96	50.64
5	905	90	175	-0.71	90	95	-12.62	-3.09	49.07
6	910	90	180	-0.32	90	95	-12.00	-2.77	52.83
7	915	90	175	-0.01	90	95	-11.88	-2.54	55.67
8	920	90	175	-0.50	90	95	-12.14	-3.09	49.07
9	925	90	175	-0.64	90	95	-12.30	-3.35	46.22
10	928	90	180	-0.57	90	95	-11.77	-3.29	46.90
11	930	90	175	-0.59	90	100	-11.71	-3.31	46.62
12	935	90	180	-0.41	90	95	-11.58	-3.21	47.71
13	940	90	180	-0.59	90	95	-11.87	-3.45	45.21

(2) H Pol



H Plane (Horizontal)									
No	Frequency [MHz]	Maximum Value			Minimum Value			Avg. Gain [dBi]	Efficiency [%]
		Θ [Deg]	Φ [Deg]	Value[dBi]	Θ [Deg]	Φ [Deg]	Value[dBi]		
1	890	90	205	-2.37	90	70	-14.01	-5.25	29.86
2	895	90	205	-1.92	90	75	-14.12	-4.75	33.53
3	900	90	210	-1.90	90	75	-14.51	-4.69	33.97
4	902	90	210	-1.97	90	75	-14.55	-4.75	33.47
5	905	90	210	-2.05	90	75	-15.01	-4.88	32.47
6	910	90	215	-1.80	90	75	-14.90	-4.56	34.83
7	915	90	210	-1.43	90	75	-14.66	-4.33	36.90
8	920	90	210	-1.92	90	75	-15.10	-4.81	33.05
9	925	90	210	-2.00	90	75	-14.83	-5.05	31.28
10	928	90	210	-1.93	90	75	-14.95	-4.95	32.02
11	930	90	210	-1.99	90	75	-14.76	-4.94	32.04
12	935	90	215	-1.80	90	75	-14.16	-4.74	33.61
13	940	90	215	-1.92	90	75	-14.08	-4.83	32.85