

Dipole Verification Plots

DIGITAL EMC CO., LTD

DUT: Dipole 835 MHz; Type: D835V2; Serial: D835V2 - SN:464

Communication System: CW; Frequency: 835 MHz; Duty Cycle: 1:1

Medium parameters used: $f = 835 \text{ MHz}$; $\sigma = 0.965 \text{ mho/m}$; $\epsilon_r = 53.5$; $\rho = 1000 \text{ kg/m}^3$

Phantom section: Flat Section

DASY4 Configuration:

Probe: EX3DV4 - SN3643; ConvF(9.14, 9.14, 9.14); Calibrated: 2013-01-24; Electronics: DAE3 Sn519

Phantom: SAM with 835MHz; Type: SAM; Serial: TP-1223

Measurement SW: DASY4, V4.7 Build 80; Postprocessing SW: SEMCAD, V1.8 Build 186

Test Date: 2013-04-06; Ambient Temp: 21.4; Tissue Temp: 21.7

835 MHz System Verification

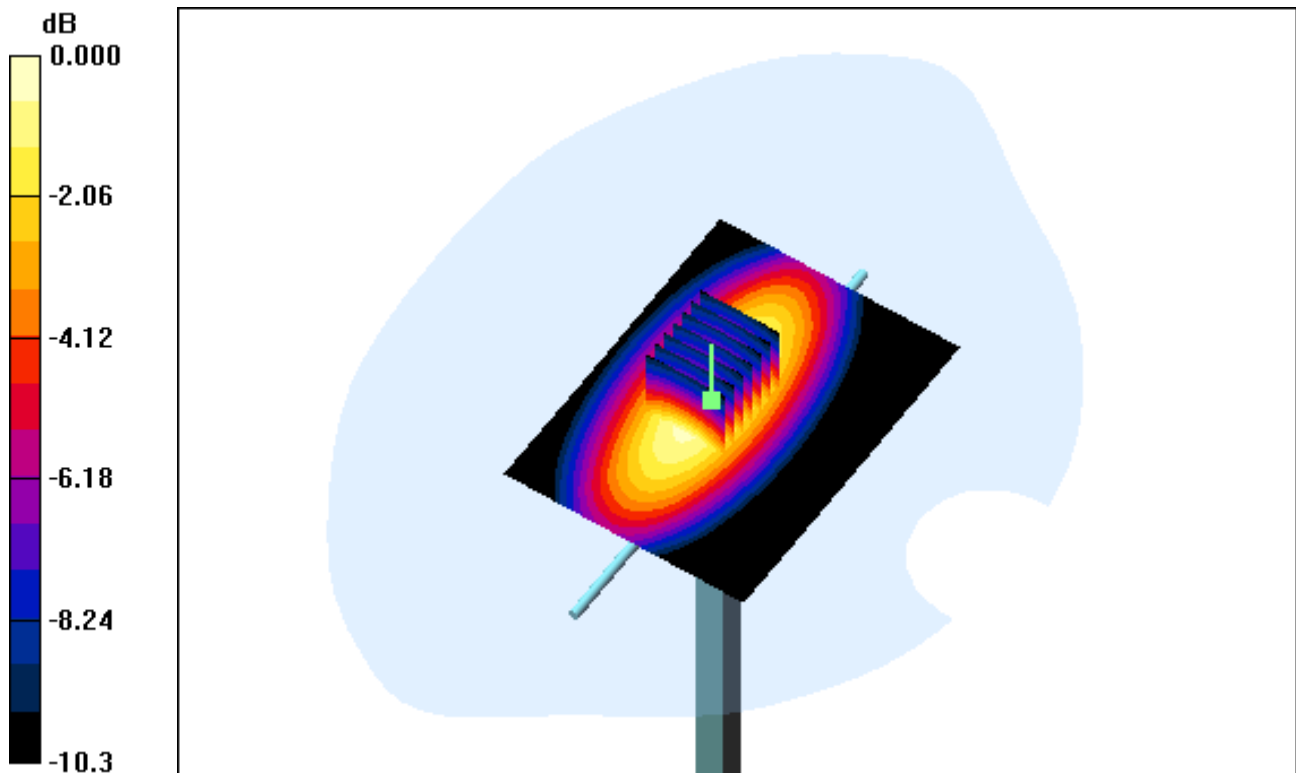
Area Scan (61x81x1): Measurement grid: $dx=15\text{mm}$, $dy=15\text{mm}$

Zoom Scan (7x7x7)/Cube 0: Measurement grid: $dx=5\text{mm}$, $dy=5\text{mm}$, $dz=5\text{mm}$

Power Drift = -0.035 dB

Peak SAR (extrapolated) = 3.57 W/kg

SAR(1 g) = 2.39 mW/g; SAR(10 g) = 1.57 mW/g



0 dB = 2.91mW/g

DIGITAL EMC CO., LTD

DUT: Dipole 835 MHz; Type: D835V2; Serial: D835V2 - SN:464

Communication System: CW; Frequency: 835 MHz; Duty Cycle: 1:1

Medium parameters used: $f = 835$ MHz; $\sigma = 0.965$ mho/m; $\epsilon_r = 53.5$; $\rho = 1000$ kg/m³

Phantom section: Flat Section

DASY4 Configuration:

Probe: EX3DV4 - SN3643; ConvF(9.14, 9.14, 9.14); Calibrated: 2013-01-24; Electronics: DAE3 Sn519

Phantom: SAM with 835MHz; Type: SAM; Serial: TP-1223

Measurement SW: DASY4, V4.7 Build 80; Postprocessing SW: SEMCAD, V1.8 Build 186

Test Date: 2013-04-06; Ambient Temp: 21.4; Tissue Temp: 21.7

835 MHz System Verification

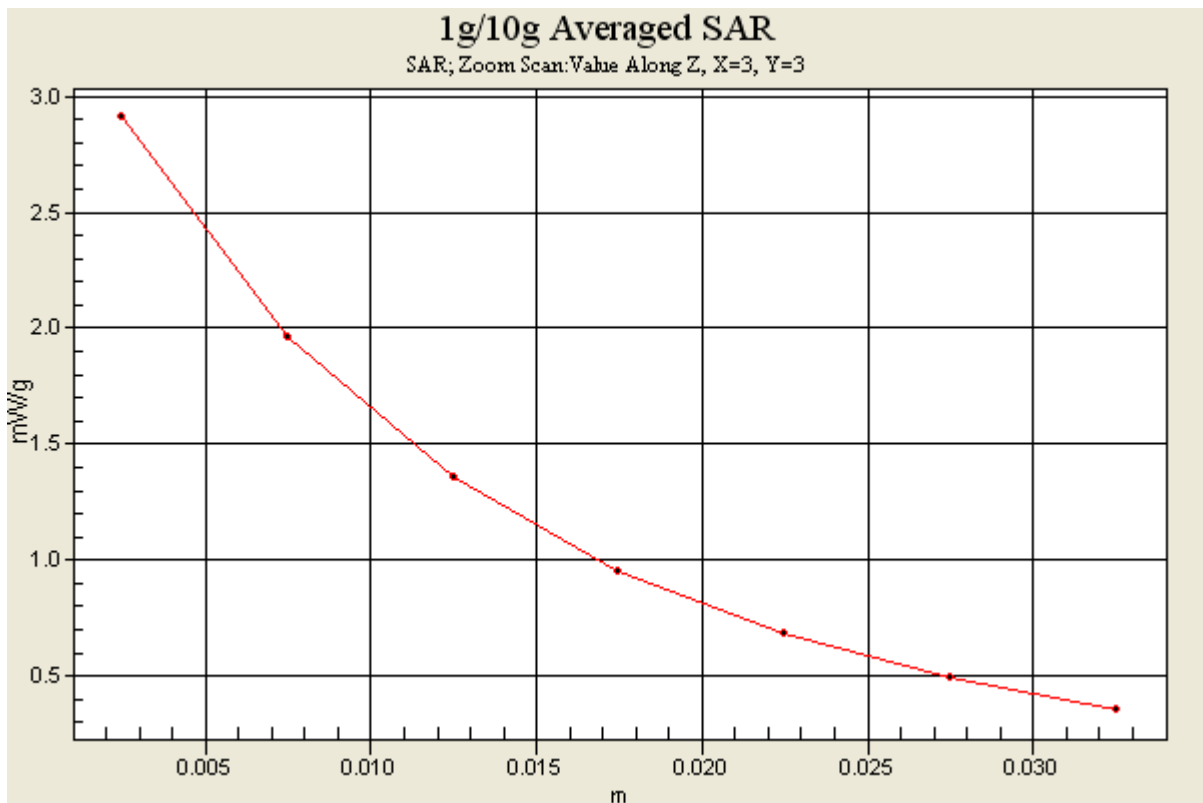
Area Scan (61x81x1): Measurement grid: dx=15mm, dy=15mm

Zoom Scan (7x7x7)/Cube 0: Measurement grid: dx=5mm, dy=5mm, dz=5mm

Power Drift = -0.035 dB

Peak SAR (extrapolated) = 3.57 W/kg

SAR(1 g) = 2.39 mW/g; SAR(10 g) = 1.57 mW/g



DIGITAL EMC CO., LTD

DUT: Dipole 835 MHz; Type: D835V2; Serial: D835V2 - SN:464

Communication System: CW; Frequency: 835 MHz; Duty Cycle: 1:1

Medium parameters used: $f = 835 \text{ MHz}$; $\sigma = 0.962 \text{ mho/m}$; $\epsilon_r = 53.3$; $\rho = 1000 \text{ kg/m}^3$

Phantom section: Flat Section

DASY4 Configuration:

Probe: EX3DV4 - SN3643; ConvF(9.14, 9.14, 9.14); Calibrated: 2013-01-24; Electronics: DAE3 Sn519

Phantom: SAM with 835MHz; Type: SAM; Serial: TP-1223

Measurement SW: DASY4, V4.7 Build 80; Postprocessing SW: SEMCAD, V1.8 Build 186

Test Date: 2013-04-06; Ambient Temp: 21.4; Tissue Temp: 21.8

835 MHz System Verification

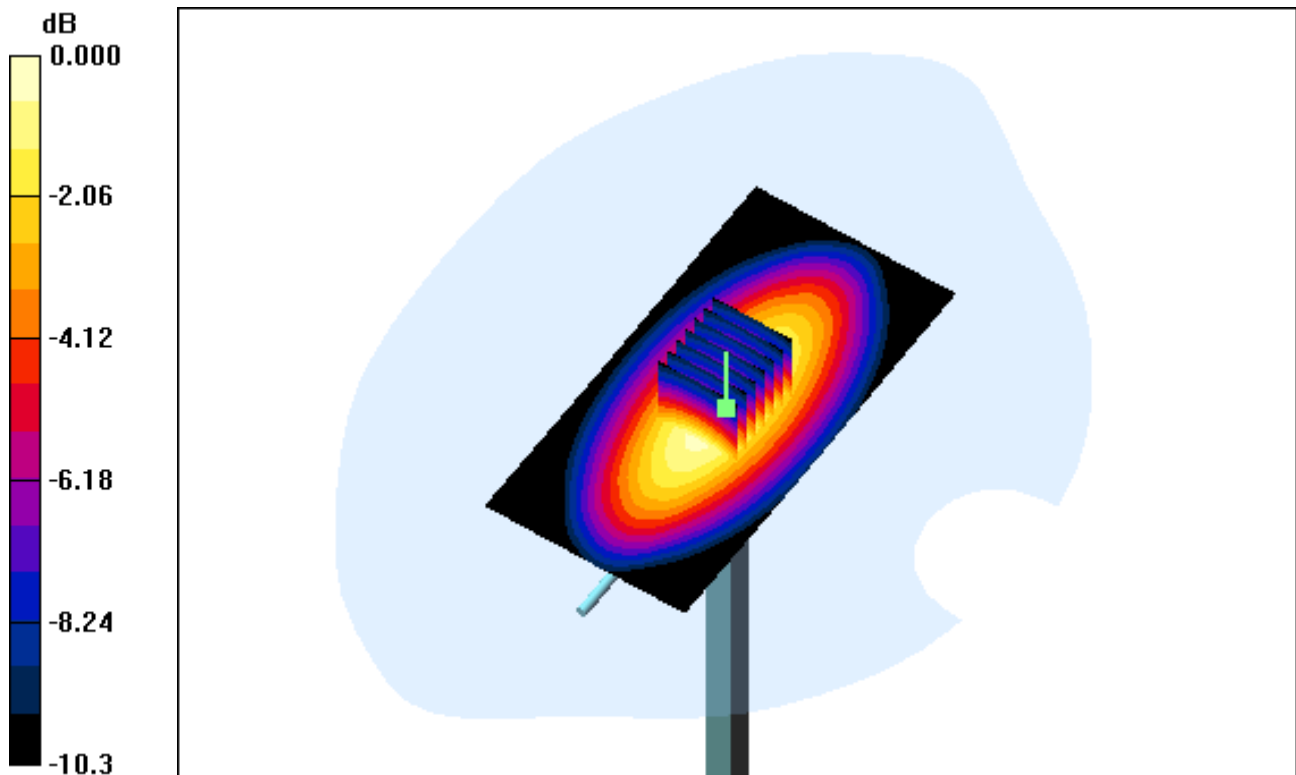
Area Scan (51x101x1): Measurement grid: $dx=15\text{mm}$, $dy=15\text{mm}$

Zoom Scan (7x7x7)/Cube 0: Measurement grid: $dx=5\text{mm}$, $dy=5\text{mm}$, $dz=5\text{mm}$

Power Drift = -0.005 dB

Peak SAR (extrapolated) = 3.83 W/kg

SAR(1 g) = 2.56 mW/g; SAR(10 g) = 1.68 mW/g



0 dB = 3.11mW/g

DIGITAL EMC CO., LTD

DUT: Dipole 835 MHz; Type: D835V2; Serial: D835V2 - SN:464

Communication System: CW; Frequency: 835 MHz; Duty Cycle: 1:1

Medium parameters used: $f = 835$ MHz; $\sigma = 0.962$ mho/m; $\epsilon_r = 53.3$; $\rho = 1000$ kg/m³

Phantom section: Flat Section

DASY4 Configuration:

Probe: EX3DV4 - SN3643; ConvF(9.14, 9.14, 9.14); Calibrated: 2013-01-24; Electronics: DAE3 Sn519

Phantom: SAM with 835MHz; Type: SAM; Serial: TP-1223

Measurement SW: DASY4, V4.7 Build 80; Postprocessing SW: SEMCAD, V1.8 Build 186

Test Date: 2013-04-06; Ambient Temp: 21.4; Tissue Temp: 21.8

835 MHz System Verification

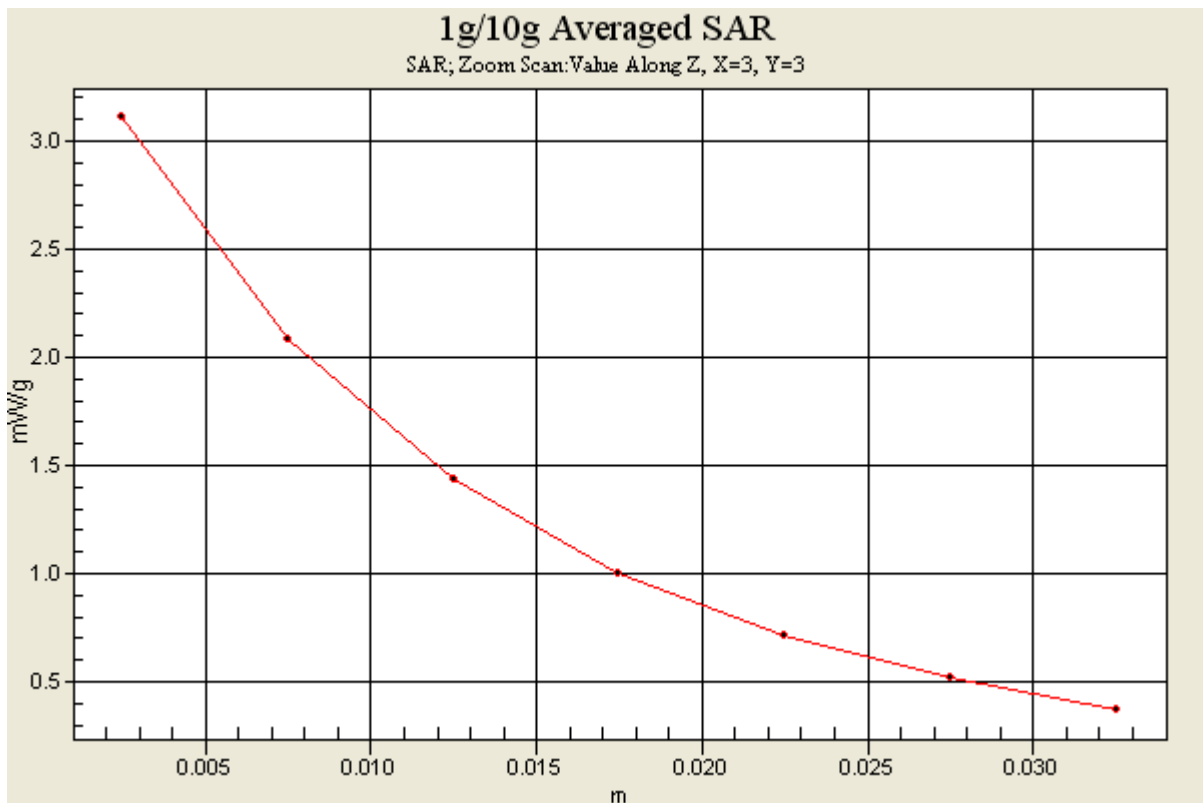
Area Scan (51x101x1): Measurement grid: dx=15mm, dy=15mm

Zoom Scan (7x7x7)/Cube 0: Measurement grid: dx=5mm, dy=5mm, dz=5mm

Power Drift = -0.005 dB

Peak SAR (extrapolated) = 3.83 W/kg

SAR(1 g) = 2.56 mW/g; SAR(10 g) = 1.68 mW/g



DIGITAL EMC CO., LTD

DUT: Dipole 1900 MHz; Type: D1900V2; Serial: D1900V2 - SN:5d029

Communication System: CW; Frequency: 1900 MHz; Duty Cycle: 1:1

Medium parameters used: $f = 1900$ MHz; $\sigma = 1.52$ mho/m; $\epsilon_r = 53.6$; $\rho = 1000$ kg/m³

Phantom section: Flat Section

DASY4 Configuration:

Probe: EX3DV4 - SN3643; ConvF(7.47, 7.47, 7.47); Calibrated: 2013-01-24; Electronics: DAE3 Sn519

Phantom: SAM 1800/1900 MHz; Type: SAM; Serial: TP-1224

Measurement SW: DASY4, V4.7 Build 80; Postprocessing SW: SEMCAD, V1.8 Build 186

Test Date: 2013-04-07; Ambient Temp: 21.2; Tissue Temp: 21.6

1900 MHz System Verification

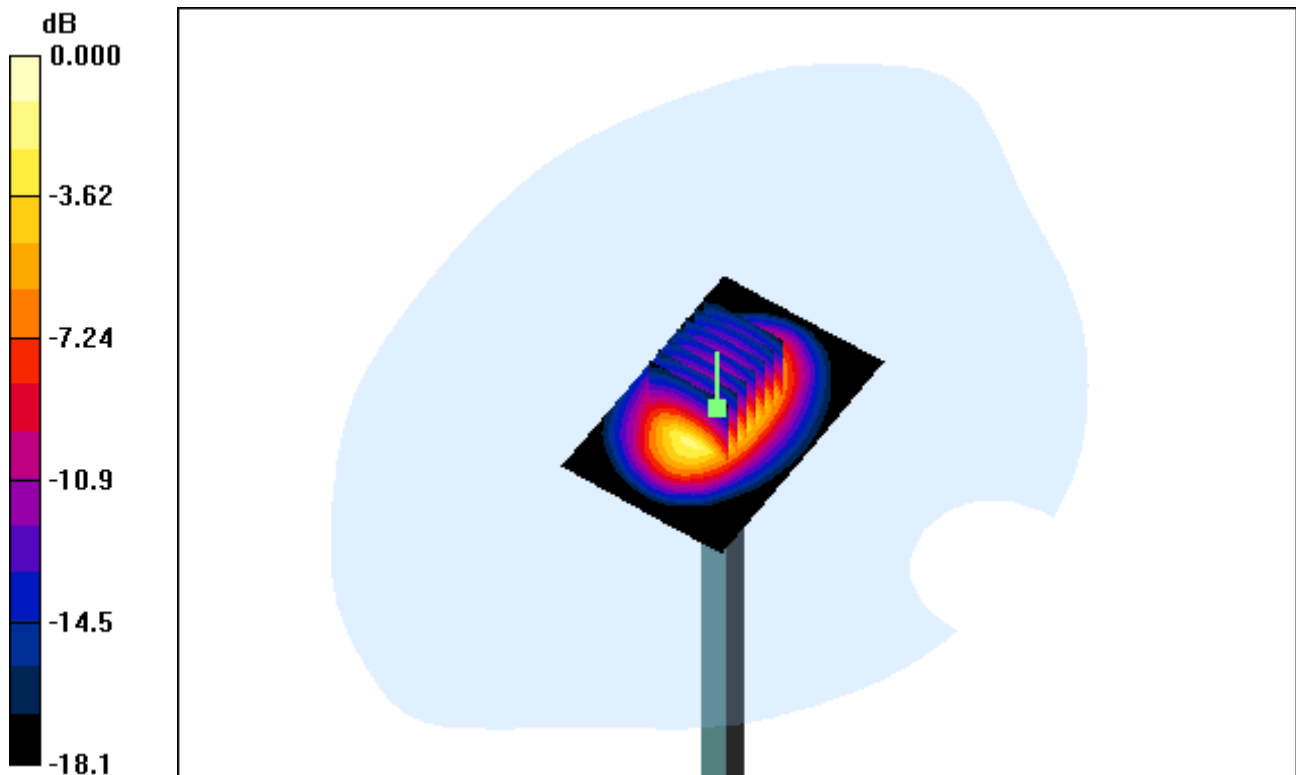
Area Scan (61x91x1): Measurement grid: dx=15mm, dy=15mm

Zoom Scan (7x7x7)/Cube 0: Measurement grid: dx=5mm, dy=5mm, dz=5mm

Power Drift = 0.017 dB

Peak SAR (extrapolated) = 17.8 W/kg

SAR(1 g) = 9.44 mW/g; SAR(10 g) = 4.84 mW/g



0 dB = 12.9mW/g

DIGITAL EMC CO., LTD

DUT: Dipole 1900 MHz; Type: D1900V2; Serial: D1900V2 - SN:5d029

Communication System: CW; Frequency: 1900 MHz; Duty Cycle: 1:1

Medium parameters used: $f = 1900$ MHz; $\sigma = 1.52$ mho/m; $\epsilon_r = 53.6$; $\rho = 1000$ kg/m³

Phantom section: Flat Section

DASY4 Configuration:

Probe: EX3DV4 - SN3643; ConvF(7.47, 7.47, 7.47); Calibrated: 2013-01-24; Electronics: DAE3 Sn519

Phantom: SAM 1800/1900 MHz; Type: SAM; Serial: TP-1224

Measurement SW: DASY4, V4.7 Build 80; Postprocessing SW: SEMCAD, V1.8 Build 186

Test Date: 2013-04-07; Ambient Temp: 21.2; Tissue Temp: 21.6

1900 MHz System Verification

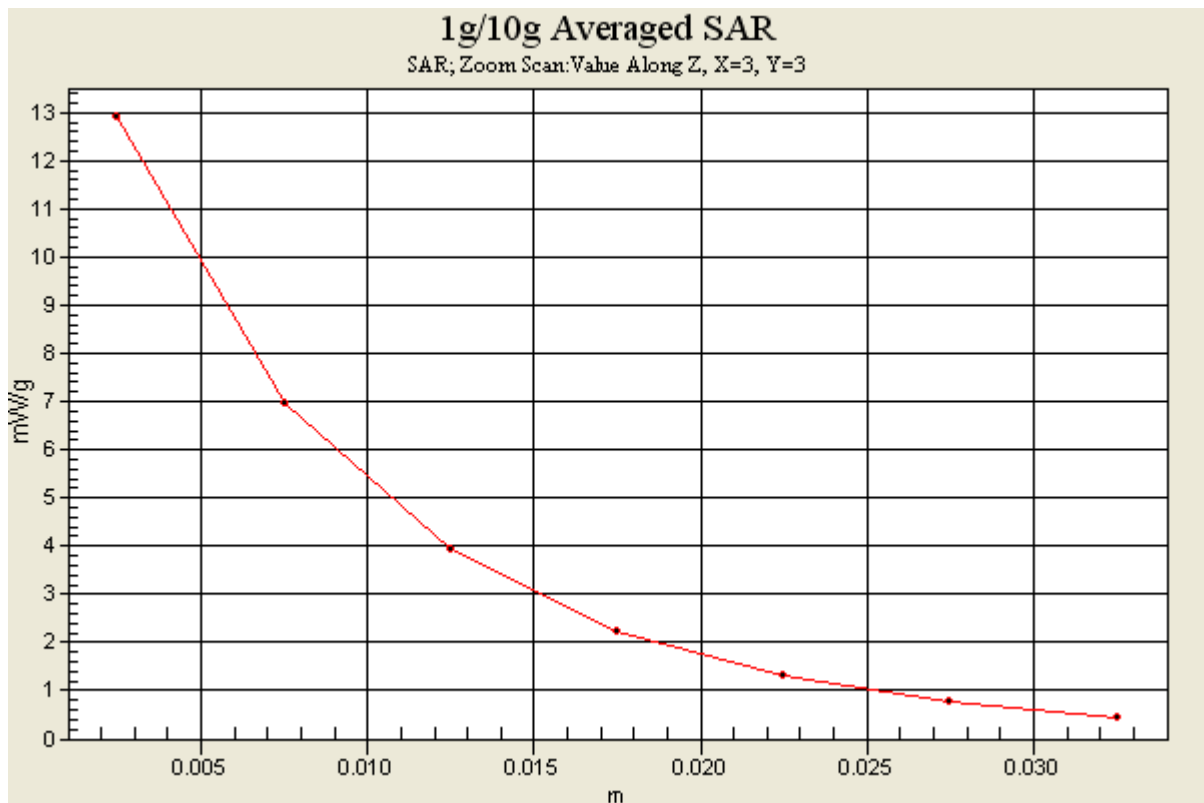
Area Scan (61x91x1): Measurement grid: dx=15mm, dy=15mm

Zoom Scan (7x7x7)/Cube 0: Measurement grid: dx=5mm, dy=5mm, dz=5mm

Power Drift = 0.017 dB

Peak SAR (extrapolated) = 17.8 W/kg

SAR(1 g) = 9.44 mW/g; SAR(10 g) = 4.84 mW/g



DIGITAL EMC CO., LTD

DUT: Dipole 1900 MHz; Type: D1900V2; Serial: D1900V2 - SN:5d029

Communication System: CW; Frequency: 1900 MHz; Duty Cycle: 1:1

Medium parameters used: $f = 1900$ MHz; $\sigma = 1.53$ mho/m; $\epsilon_r = 53.8$; $\rho = 1000$ kg/m³

Phantom section: Flat Section

DASY4 Configuration:

Probe: EX3DV4 - SN3643; ConvF(7.47, 7.47, 7.47); Calibrated: 2013-01-24; Electronics: DAE3 Sn519

Phantom: SAM 1800/1900 MHz; Type: SAM; Serial: TP-1224

Measurement SW: DASY4, V4.7 Build 80; Postprocessing SW: SEMCAD, V1.8 Build 186

Test Date: 2013-04-07; Ambient Temp: 21.2; Tissue Temp: 21.5

1900 MHz System Verification

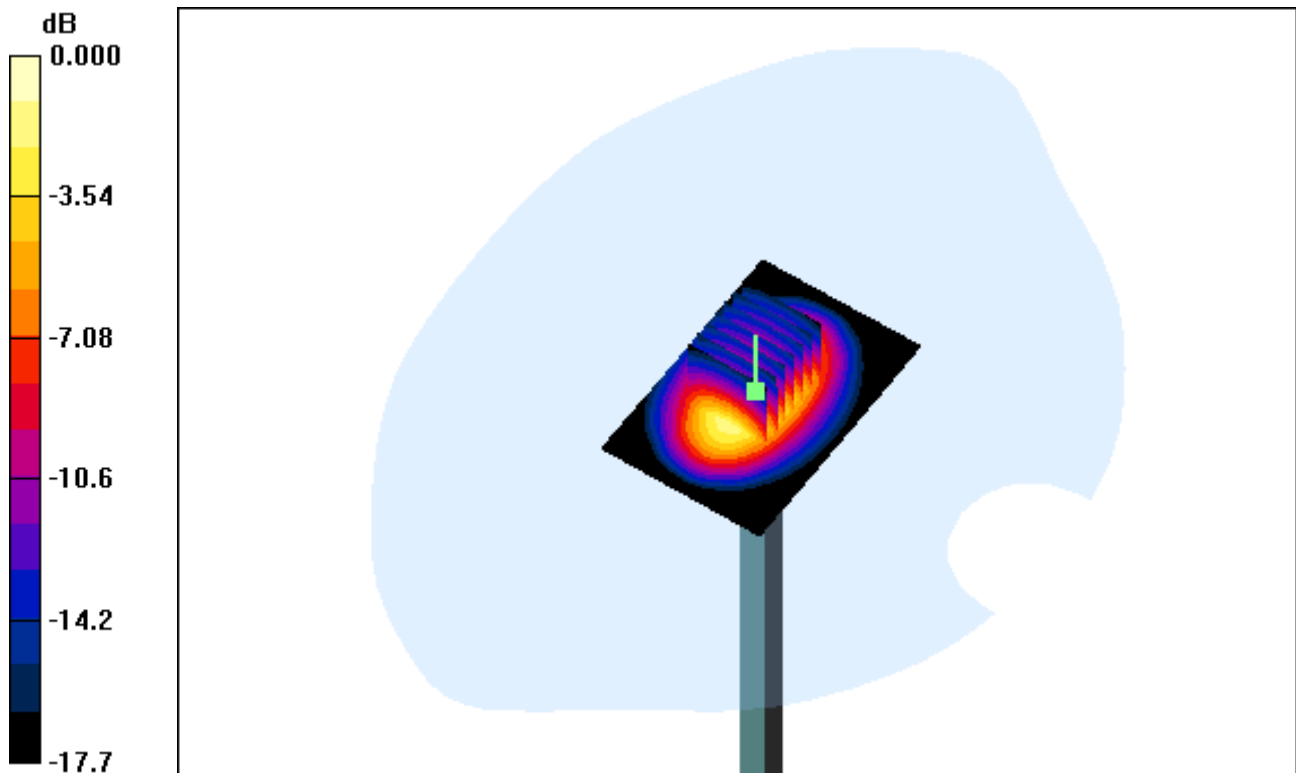
Area Scan (61x91x1): Measurement grid: dx=15mm, dy=15mm

Zoom Scan (7x7x7)/Cube 0: Measurement grid: dx=5mm, dy=5mm, dz=5mm

Power Drift = 0.031 dB

Peak SAR (extrapolated) = 18.2 W/kg

SAR(1 g) = 9.61 mW/g; SAR(10 g) = 4.94 mW/g



0 dB = 13.2mW/g

DIGITAL EMC CO., LTD

DUT: Dipole 1900 MHz; Type: D1900V2; Serial: D1900V2 - SN:5d029

Communication System: CW; Frequency: 1900 MHz; Duty Cycle: 1:1

Medium parameters used: $f = 1900$ MHz; $\sigma = 1.53$ mho/m; $\epsilon_r = 53.8$; $\rho = 1000$ kg/m³

Phantom section: Flat Section

DASY4 Configuration:

Probe: EX3DV4 - SN3643; ConvF(7.47, 7.47, 7.47); Calibrated: 2013-01-24; Electronics: DAE3 Sn519

Phantom: SAM 1800/1900 MHz; Type: SAM; Serial: TP-1224

Measurement SW: DASY4, V4.7 Build 80; Postprocessing SW: SEMCAD, V1.8 Build 186

Test Date: 2013-04-07; Ambient Temp: 21.2; Tissue Temp: 21.5

1900 MHz System Verification

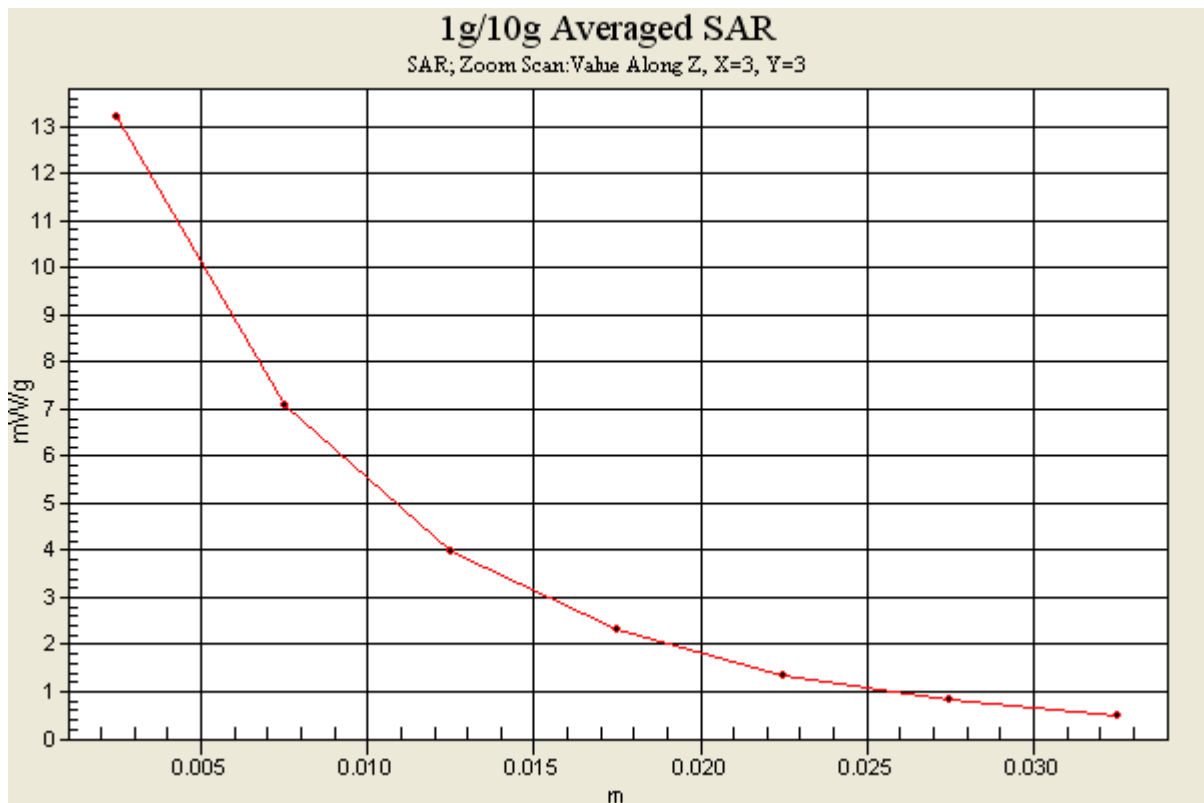
Area Scan (61x91x1): Measurement grid: dx=15mm, dy=15mm

Zoom Scan (7x7x7)/Cube 0: Measurement grid: dx=5mm, dy=5mm, dz=5mm

Power Drift = 0.031 dB

Peak SAR (extrapolated) = 18.2 W/kg

SAR(1 g) = 9.61 mW/g; SAR(10 g) = 4.94 mW/g



DIGITAL EMC CO., LTD

DUT: Dipole 2450 MHz; Type: D2450V2; Serial: D2450V2 - SN:726

Communication System: CW; Frequency: 2450 MHz; Duty Cycle: 1:1
Medium parameters used: $f = 2450$ MHz; $\sigma = 1.96$ mho/m; $\epsilon_r = 54.8$; $\rho = 1000$ kg/m³
Phantom section: Flat Section

DASY4 Configuration:

Probe: EX3DV4 - SN3643; ConvF(7.07, 7.07, 7.07); Calibrated: 2013-01-24; Electronics: DAE3 Sn519
Phantom: SAM 1800/1900 MHz; Type: SAM; Serial: TP-1224
Measurement SW: DASY4, V4.7 Build 80; Postprocessing SW: SEMCAD, V1.8 Build 186

Test Date: 2013-03-27; Ambient Temp: 21.0; Tissue Temp: 21.4

2450 MHz System Verification

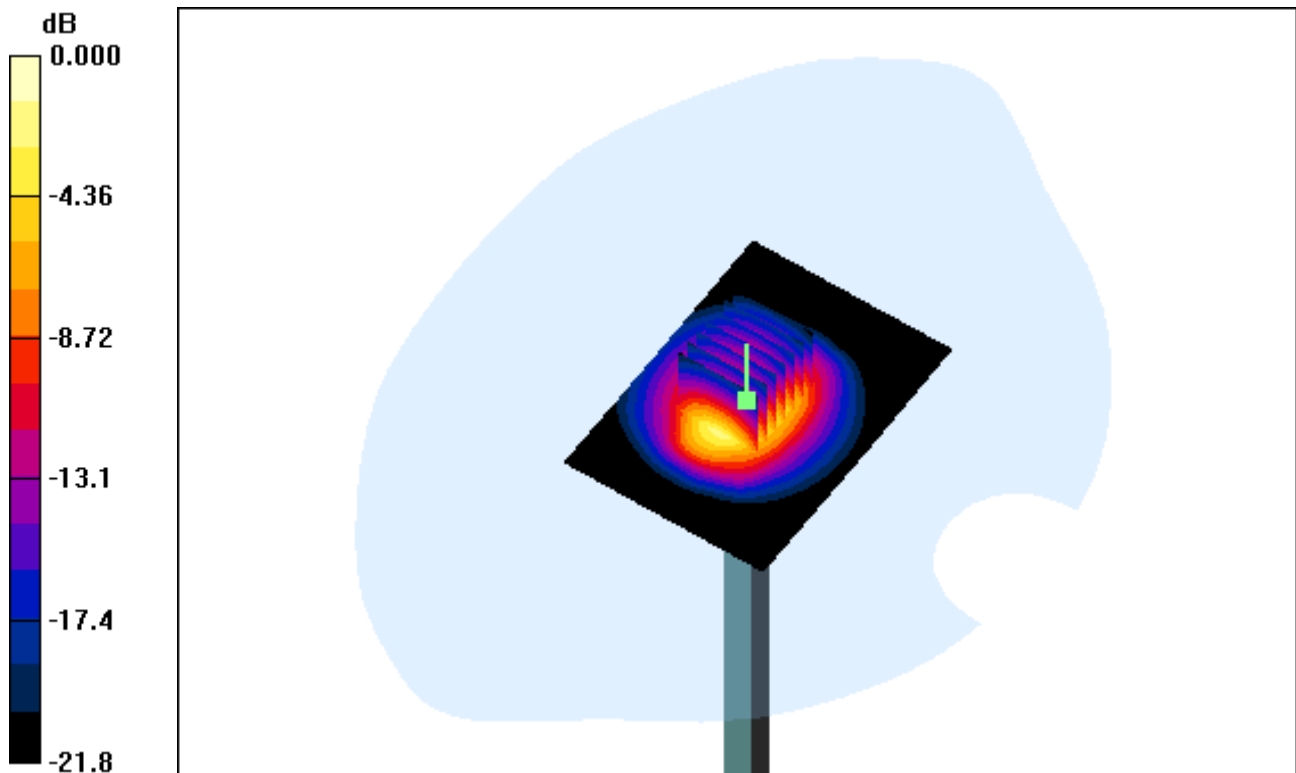
Area Scan (51x71x1): Measurement grid: dx=12mm, dy=12mm

Zoom Scan (7x7x7)/Cube 0: Measurement grid: dx=5mm, dy=5mm, dz=5mm

Power Drift = 0.007 dB

Peak SAR (extrapolated) = 26.7 W/kg

SAR(1 g) = 12.8 mW/g; SAR(10 g) = 5.95 mW/g



0 dB = 18.1mW/g

DIGITAL EMC CO., LTD

DUT: Dipole 2450 MHz; Type: D2450V2; Serial: D2450V2 - SN:726

Communication System: CW; Frequency: 2450 MHz; Duty Cycle: 1:1
Medium parameters used: $f = 2450$ MHz; $\sigma = 1.96$ mho/m; $\epsilon_r = 54.8$; $\rho = 1000$ kg/m³
Phantom section: Flat Section

DASY4 Configuration:

Probe: EX3DV4 - SN3643; ConvF(7.07, 7.07, 7.07); Calibrated: 2013-01-24; Electronics: DAE3 Sn519
Phantom: SAM 1800/1900 MHz; Type: SAM; Serial: TP-1224
Measurement SW: DASY4, V4.7 Build 80; Postprocessing SW: SEMCAD, V1.8 Build 186

Test Date: 2013-03-27; Ambient Temp: 21.0; Tissue Temp: 21.4

2450 MHz System Verification

Area Scan (51x71x1): Measurement grid: dx=12mm, dy=12mm
Zoom Scan (7x7x7)/Cube 0: Measurement grid: dx=5mm, dy=5mm, dz=5mm
Power Drift = 0.007 dB
Peak SAR (extrapolated) = 26.7 W/kg
SAR(1 g) = 12.8 mW/g; SAR(10 g) = 5.95 mW/g

