

Before use, always read 'warning and safety information' thoroughly and always obey them.

Please note that this manual may be different according to the conditions such as the software version or mobile phone business partner, and changed without notice.

The configuration and color of the manual may differ from the actual.

## BM-300

## Series Manual



This manual is protected by copyright laws.

This manual has been prepared sincerely by BluebirdSoft Inc., but may be different to the real due to edit error, information omission, and etc. But in no event shall we be liable for any problems occurred due to this.

The program provided with this product is copyrighted and its reproduction, deletion, movement, and etc. is prohibited without the permission of the manufacturer.

Some function of this product may lead to some problems in the operation according to the available conditions, usable program, peripheral equipments, and etc.

This wireless equipment has the possibility of radio interference and no service permitted in connection with human health and security.

### Registered Trademark



PIDION is protected by copyright laws registered worldwide by Bluebirdsoft Inc., a global brand which presents the reliable, representative, and high tech images, as a leading brand of future mobile fields.

### User's Instruction

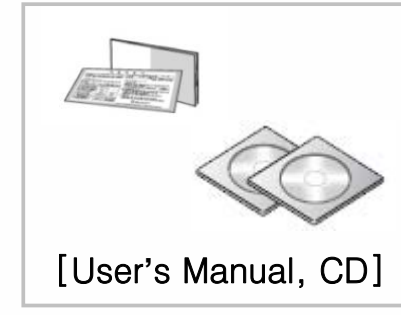
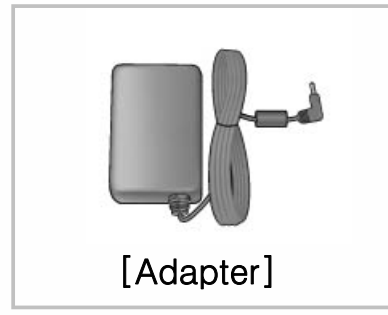
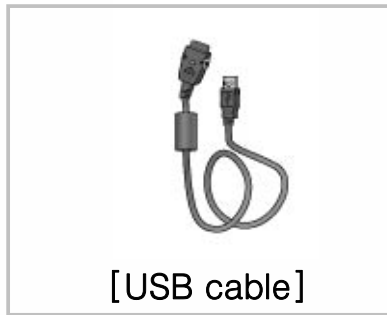
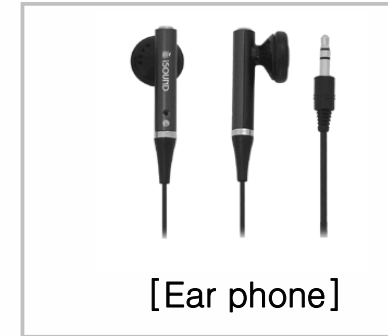
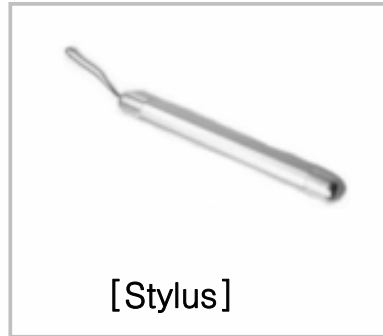
Type	User's Instruction
Class B (A home information and communication equipment)	This equipment has been tested and found to comply with the limits for a Class B digital device. It can be used in any other places besides in a residential installation, provided with reasonable protection against harmful interference.

## Safety Information

For your safety, please read the guidelines below carefully before you use the product .

- Do not use PDA at PDA restricted area and Potentially Explosive Area.
- If PDA or battery contacted to the water, do not heat or dry the battery in an oven or micro wave.
- If PDA or battery contacted to the water or liquid, the phone's label color changes.  
(This time, it can't be repaired free of charge and be attention to use the PDA.)
- All batteries can cause property damages, injury, or burns if a conductive material such as jewelry, keys or beaded chains touches exposed terminals. To protect against such unwanted touch, exercise care in handling any charged battery.
- In particular when placing the battery in very hot or cold area for long, it can cause the reduction of capacity or life.
- Use only the designated and supplied batteries and adapters. They can't be used for other purposes, excepts for our company's terminal.
- If not used the battery for long, always store the charged battery at a room temperature.
- Though charged sufficiently, the battery life changes due to its own feature.
- Do not use any other type of battery in your equipment. Otherwise, it can cause the reduction of life in battery or PDA itself as well as the risk of explosion.
- Do not watch DMB during driving (bicycles, automobiles, auto bicycles, and etc.), walking, climbing the mountain, and etc.
- If DMB receiving antenna touches exposed conductive areas such as power receptacle and etc., it can cause an electric shock.
- If touched with antenna, it can cause human injury. Keep the child away from the antenna.
- If a failure occurred, never revise, disassemble, or repair the product. Please contact the service center of our company.
- If you are allergic to exposed paints, stop using the PDA and consult a doctor.
- Do not apply the PDA with paint or dyes. Otherwise, it can cause damage in the appearance or screen or abnormal operation of the product.
- Make sure to protect DMB antenna, headphone, or earphone not caught or tight by other materials.
- If used for long at hot/high humidity environments, it can cause a fault.
- There can be Not serviceable area. Always check for terrestrial DMB reception area.
- Terrestrial DMB broadcasting may be deteriorated in picture quality irrespective of reception.
- With poor reception of broadcasting, point up the antenna and then change the direction to find the optimum conditions.
- If you folded the antenna in a different direction, it can cause a breakdown.
- If touched PDA with sharp objects such as pins, nails, ball pens, and etc. instead of the stylus, the screen may get scratched.
- Avoid vibration and shock. If not used, turn off the power and store it at a safe place.
- Connect the adapter firmly. If smoke, smell, noise, and etc. occurred in the product, immediately power off the product and disconnect the adapter. In thunder or lightning, always disconnect the adapter.
- This wireless equipment has the possibility of radio wave interference so no service permitted in connection with human safety.

Product Components



**Thanks for your purchasing PIDION. Make sure that the package contains all of the above contents.**  
The picture or photo may differ from that illustrated in the user's manual according to the model (If you want additional accessories, contact Customer Information Service Center).

## Product Specification

### Product Specification

CPU	Intel PXA270 520Mhz
RAM	64MB
ROM	512MB
OS	Windows Mobile 5.0 Premium
Wireless Lan	WiFi : 802.11b/g
Bluetooth	1.2 class2 (WM profile)
Slot	SD (SDIO) support
DMB	T-DMB
LCD	2.8" QVGA 26M Color Transflective
Size	110 x 60 x 13.8 (mm)
USB	Host 1.1, Client 1.1
Battery	Rechargeable Lithium Polymer Battery Standard type : 1250mAh install/removable type
기타	IrDA Port, 24Pin Port, Dual Speaker, Remote controller support, 2.5 pi Stereo Plug

WLAN	Available Frequency: 2,412MHz ~ 2,472MHz No. of Channels : 13 Antenna Power : 10mW or less Modulation Method : G1D, D2D Approved Module Used (SWL-2460C)
Bluetooth	Available Frequency : 2,402MHz ~ 2,480MHz No. of Channels : 79 Antenna Power : 0.01mW or less Modulation Method: F1D
DMB	Available Frequency : 174~216MHz No. of Channels : Video 7 , Radio 10

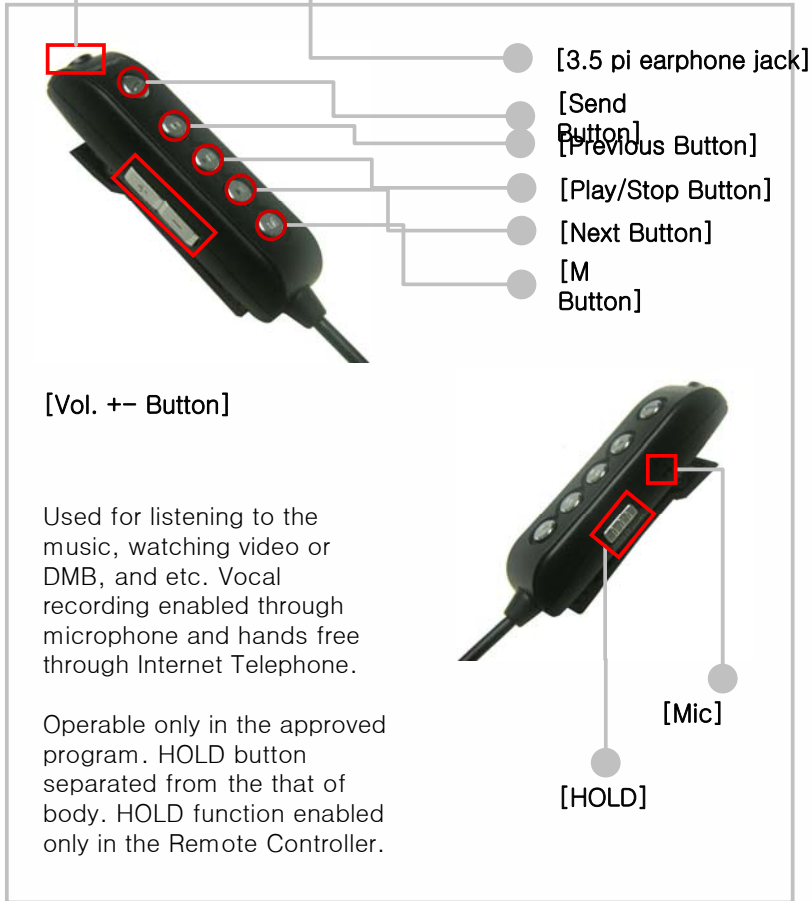
"CAUTION: Exposure to Radio Frequency Radiation.  
Antenna shall be mounted in such a manner to minimize the potential for human contact during normal operation. The antenna should not be contacted during operation to avoid the possibility of exceeding the FCC radio frequency exposure limit."

**Thanks for your purchasing PIDION. Make sure that the package contains all of the above contents.**  
The picture or photo may differ from that illustrated in the user's manual according to the model (If you want additional accessories, contact Customer Information Service Center).

Each Part Name and Button



Using Remote Controller



Button Name	General Control	DMB Control
Send	Short – Memo Long – Vocal recording	Short – Memo Long – Vocal recording
Previous	Previous music of media player	Previous channel
Play/Pause	Play/pause of media player	Screen Toggle
Next	Next music of media player	Next channel
M	Media player operation	
Vol. +	Volume UP	
Vol. -	Volume DOWN	
Hold	Hold	

If you have no remote controller provided with the shipment of product, it may be impossible to operate. Always use only the remote controller provided with the product.  
 If installed or removed at the body by force, it can cause a failure to the equipment.

Battery Installation and Removal

**[Battery Installation]**

1. Slip the battery into the battery compartment top edge first.
2. Insert the Battery Cover.

**[Removing the Battery]**

1. If pushing the center of battery cover slightly, the cover removes.
2. Using the stylus, remove the battery from the right groove.

Battery Installation Grip Insertion Area

SD Memory Card

- Frequent insertion/removal of memory or excessive force can cause a failure on the equipment.
- If removed the card and turned off the power while using the memory card, it can cause a data loss or mis-operation of memory card and PDA.

- Always backup the important data at PC. Otherwise, the manufacturer assumes no liability for data loss.
- If the memory card removed well, do not remove the card forcedly and contact the AS center. If necessary, you can replace it with the applicable product or refund it.

After the metal terminal of memory faced toward the bottom of rear, push to the end. If slightly pressed the end of memory visible at SD Slot, it removes.

Always charge the battery only using the supplied adapter.

It can be charged with 24 pin(The Standard specified by the Ministry of Information and Communication) charger for general mobile phones. (It may be discharged gradually after full charging due to the nature of the standard charger).



Conditions by Battery Charging and LED

< Charging and Usable Time >

When charged with PC	2 and a half hours
When charged with adaptor	2 hours
Max. Usable Time	Normal : 12hours Watching DMB : 4 hours

< LED while battery charging >

	While Charging	Charging Completed
Charging Lamp	Orange	Green

< Wireless Indicator LED >

	Wireless	Bluetooth	DMB
Wireless lamp	Blue	Blue	Orange

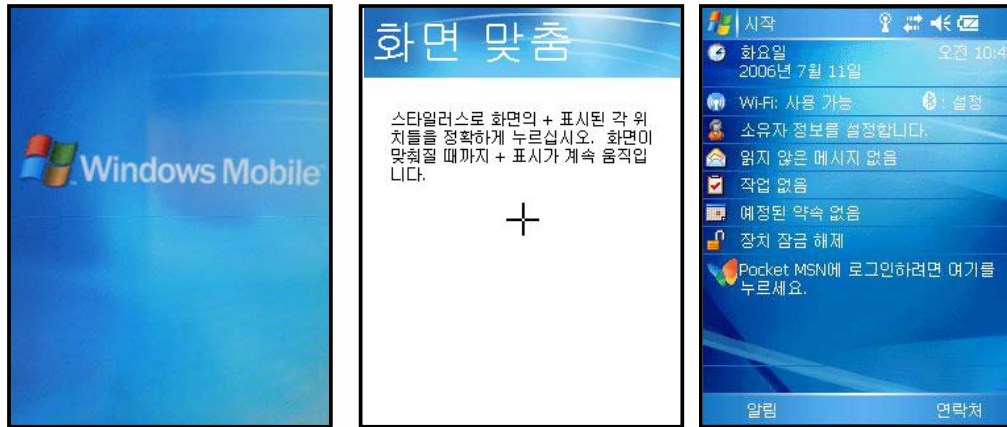
If the product not fully charged, a warning message appears with a beep.

The charging time of user's manual varies according to the conditions. Besides, new batteries are shipped with partly charged. Always use the fully charged battery.

< Battery Precautions >

- Battery is consumables and its usable time may be reduced over times.
- Battery can cause a heat according to the conditions.
- If battery's life reduced more than the half of the first use, please change with new battery. (Guaranteed period; 6 months).
- Battery's life may differ according to the brightness of LCD, temperature, used time of battery, and etc.
- Bluetooth, if remained for long at the area where no wireless internet available, its usable time may be reduced rapidly due to enormous consumption of battery.  
(Bluetooth, always set the function to off if not used wireless internet)
- After a completion of charging, you can leave the battery installed at the charger. It can't cause damage to the product.
- If the lamp not illuminated at the body while charging, it can be occurred due to misconnection of cables. Remove and then reconnect the cable.
- If disconnected the battery while using, it can cause the initialization of PDA and a data loss.
- With a low battery, it may cause hard reset.

### Startup



1. Press the power button of PDA.
2. Window mobile logo screen appears on the LCD.
3. Perform stylus point setup and setting as guided in PDA.
4. After a completion of setup, Today screen appears.

In Point Setup, press a cross-hair object exactly, or it appears repeatedly.

It can cause a scratch or a failure on the LCD screen.

Do not use sharp objects such as pin, nail, and etc. instead of the stylus with soft tip.

### Using the Stylus

As the stylus to be attached at the hand strip or case, it can be used to run the program on the touch screen or enter the data directly.

#### Tab

Touch the screen once with the stylus to open items or select options.

#### Drag

Hold the stylus on the screen and drag across the screen to select text and images. Drag in a list to select multiple items. The same function as in field select on the desktop.

#### Tab and Hold

Tap and hold the stylus on an item to see a list of actions available for that item. If tap and hold the item, a pop-up menu appears. The same function as in the Right Click of mouse on the desktop.

### Using the HOLD Key



HOLD Key at the side of right.

Lock : If pressed down the Hold key, the product is set to the lock position.

Unlock : If pressed up the Hold key, the product is set to the unlock position.

- If the Hold key set to the lock position, all buttons remain disabled including LCD touch screen.
- If impossible to operate the product, check for Hold.
- The operation of remote controller is separated from Hold of the body. (The remote controller has its own Hold key)
- For detailed description for Remote Controller Hold, see 'Using the Remote Controller'.

### Soft Reset

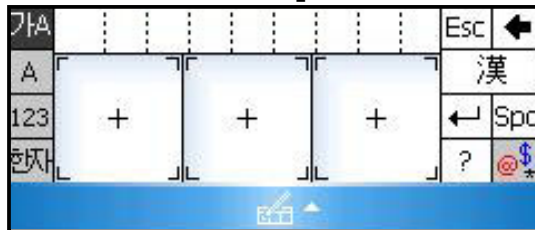
Requirements : As the same in the rebooting of computer, it can be performed when a smooth memory return disabled due to the extended use of program for long, when a conflict occurred among programs due to unexpected errors, or when not operated.

How to use : Press the Reset Button at the rear of body using the stylus.

Differences before and after the rest : A soft reset loses all files not saved, execution memory initializes, and opened program closes.

## Input Method

### [ Entering Typed Text ]



### [ Keyboard ]



### [ Keyboard ]

1. Press the input field using the stylus.
2. Keyboard appears at the bottom of screen.
3. If Writing Recognition appears, press the arrow area at the bottom of screen.
4. Press the keyboard in the Conversion Menu to change into virtual keyboard.

Click Hangle, Number, or English if necessary to write the letter.

Shift, Ctrl key are used as in the general keyboard.

#### Hanja Input Method

First write Hangle and then press the Hanja key. And the applicable Hanja appears. If selected the Hanja to be entered, Hangle changes into Hanja.

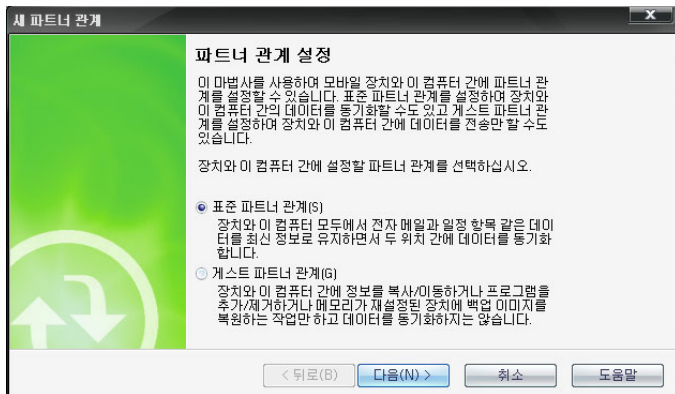
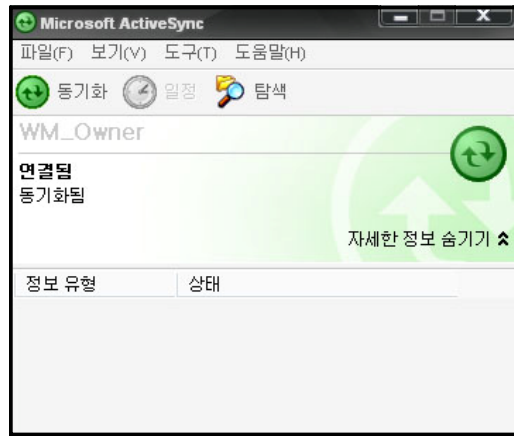
#### Symbol Input Method

Press a vowel of Hangle and then Hanja Key, and Symbol Select screen appears. Press and select the symbol to be entered, and a consonant changes into a symbol.

### [ Entering Typed Text ]

1. Press 'Entering Typed Text' using the stylus.
2. 'Letter Recognizer' appears at the bottom of screen.
3. If a keyboard appears, press the arrow object at the bottom of screen.
4. In Conversion Menu, press 'Entering Typed Text' .  
In 'Entering Typed Text' column, write Hangle, English, Hanja, and etc. to make it recognized and entered automatically.  
Clearly write in the orders of an initial, neutral, and final letter.  
Too slow writing or big gaps between words (vowels and consonants) may cause a hasty letter recognition before writing completed.  
Exactly complete the start and end of words such as '□' and '○'.  
Write a final consonant exactly.  
If scribbled words, it may be mixed with other words due to poor recognition.

## Connection the ActiveSync



Insert the companion CD into the CD-ROM driver in your computer and install the ActiveSync program.

Run the EXE file and proceed to finish installation as guided in the description .

After a completion of normal installation, prepare to connect with PDA and PC.

When a cable not connected properly, it can cause an error. If the connection terminal not tightened firmly or ActiveSync stopped and restarted automatically, disconnect and then reconnect a cable.

When connecting with PC, if PDA set to ON, PC automatically detects to run the ActiveSync.

If set to OFF, PDA only charges and doesn't run the Active Sync.

If set to OFF, power ON the product while charging to run the ActiveSync for synchronization.

If installed the ActiveSync at the desktop and then connected PDA to the desktop, you can perform data synchronization including your favorites, contacts, schedules, works, Inbox, and etc. You can copy and paste the file and be helped to install new programs.

After the first synchronization of PDA or if connected with the existing PC or another PC, you are asked whether you wish to setup a partnership or a guest partnership.

- Standard Partnership : It allows you to copy and move files between PC and PDA as well as data synchronization of your favorites, contacts, schedules, works, Inbox, and etc. application data from PC.
- Guest Partnership : It allows you to only copy and move files but not synchronize application data.

ActiveSync 4.1 Handle version. If you used another version, the manual may be varied in the content and description.

If you missed bundle CD, you can download the update version from Microsoft Website.

# DMB

## 1. Power Off and On



You can watch and hear terrestrial DMB and radio.

### How to run

1. Click DMB FUNCTION Key under POWER button at the right side of PDA.
2. Click START -> PROGRAM -> DMB Player Icon
3. With Manual Navigator  
Click Device -> DMB -> Program -> DMB Player Icon

### How to exit

As in Close of general program.  
(Program Exit button at the upper right)

Watch DMB with the antenna pointed up for broadcasting reception.  
While not watching DMB, put the antenna into the body of DMB phone.

**Never watching DMB while driving and walking. It can be dangerous.**

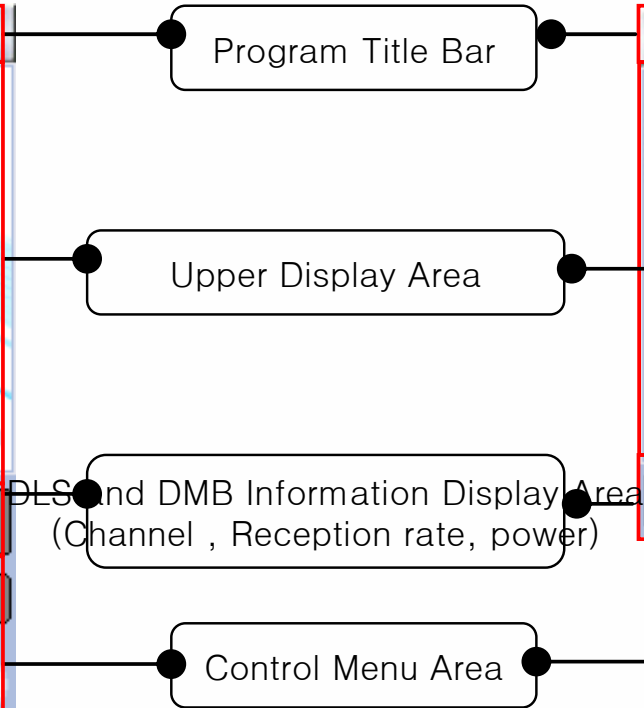
**Excessive force on the antenna can cause a breakdown of it.**

## 2. Screen

[ Vertical Mode ]



[Horizontal Mode ]



Avoid watching DMB while driving and walking. It can be dangerous.  
If excessive forces applied at the antenna, it can cause a breakdown.



## 3. How to Use the Program

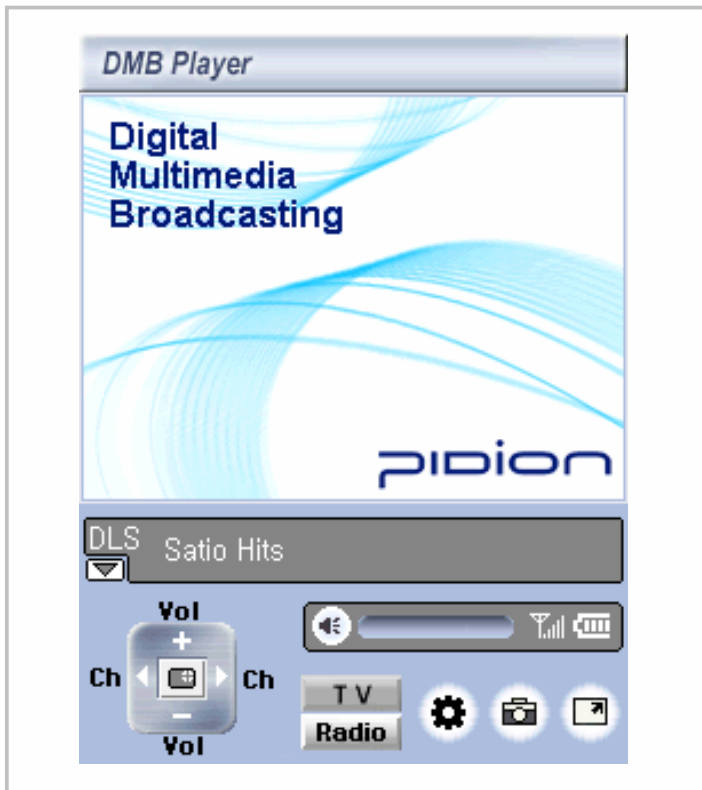


Icon	name	Description
	Left/Right Button	Channel change
	Up/Down Button	Volume control
	Toggle	LCD power off
	Setup	DMB option setup
	Capture	View Capture into JPEG.
	Full Screen	Full Screen View
	TV Mode	TV Channel Enabled
	Radio Mode	Radio Channel Enabled
	Mute Button	Changed to Mute irrespective of the volume.
	Volume Bar	Volume Control

Never watching DMB while driving and walking. It can be dangerous.  
Excessive force on the antenna can cause a breakdown of it.



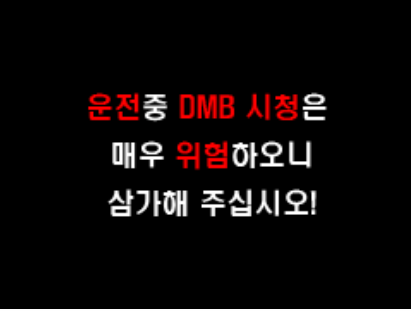
## 4. Screen Capture



Name	Description
Capture Method	Press the Capture Icon.
Folder to be saved	Into DMB -> Capture Folder
Save File Attribute	File Name : Capture Date Time
	Extension Name : JPEG
	Size : 320 x 240

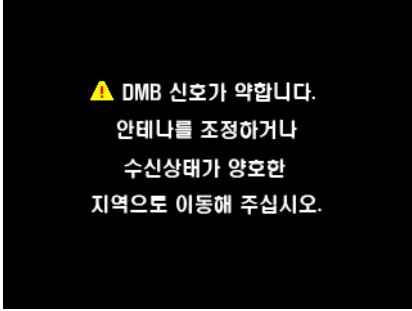
Never watching DMB while driving and walking. It can be dangerous.  
Excessive force on the antenna can cause a breakdown of it.

## 5. Message Screen



운전중 DMB 시청은  
매우 위험하오니  
삼가해 주십시오!

Warning Message  
to prevent watch  
DMB while driving.



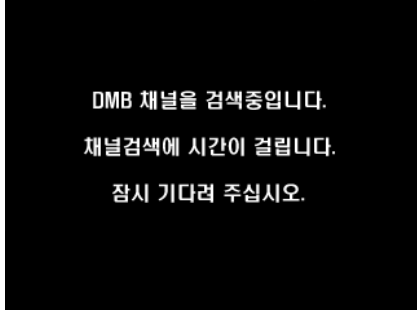
▲ DMB 신호가 약합니다.  
안테나를 조정하거나  
수신상태가 양호한  
지역으로 이동해 주십시오.

Caution; poor  
signal or no signal  
of DMB.



Digital  
Multimedia  
Broadcasting

While listening to  
Radio.

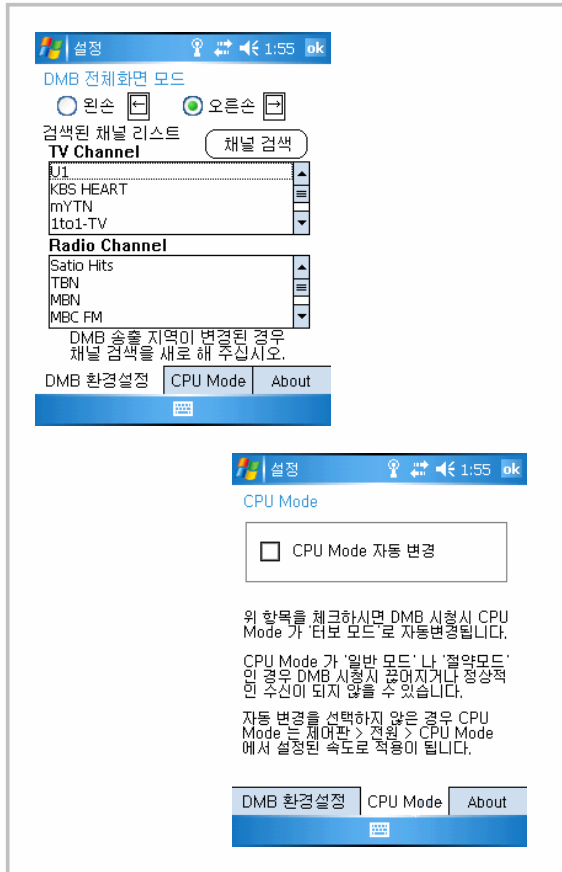


DMB 채널을 검색중입니다.  
채널검색에 시간이 걸립니다.  
잠시 기다려 주십시오.

No saved channel.  
“Searching DMB  
Channel”  
automatically.

If the network signal is too weak at your current location, it may take much time in searching the channel.  
In a basement or near a tall building, it may cause poor reception of DMB.

## 6. Configuration



Screen	Name	Description
	Full Screen Mode	In Full Screen Mode, determine Left Hand-centered or Right Hand-centered.
	DMB TV/Radio Channel Searching	Allows to add TV/Radio channel enable to be received at the present region through AUTO CHANNEL SEARCHING. Only through AUTO SEARCHING.
	DMB TV/ Channel List	Lists TV / Radio Channel respectively and displays the Searched Results. If clicked the Channel, you can see it.
	CPU Mode Auto Change	If used the item, CPU automatically changes to Turbo Mode only when watching DMB.

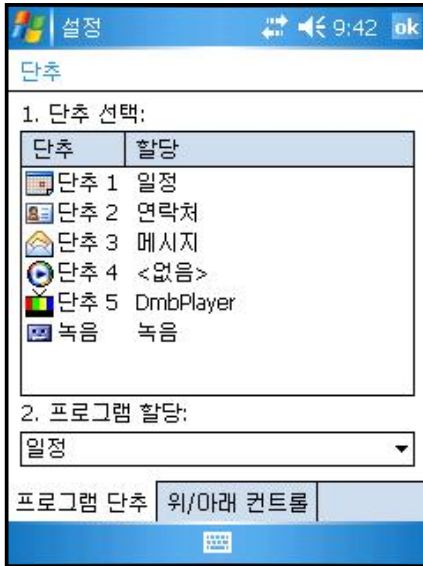
If the network signal is too weak at your current location, it may take much time in searching the channel. In a basement or near a tall building, it may cause poor reception of DMB.

# Settings

## 1. Personal Settings



**[Button]**



Used to change 4 Short keys below PDA.

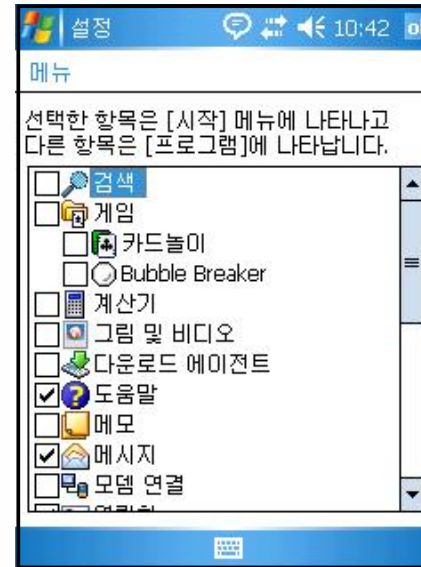
Tab : Start-> Settings  
->  
Personal -> Button  
Icon

How to change Short Key Allocation Program: Select the button and then the program you want to allocate in the Program Allocation. If you selected the necessary program, press OK.

Available Program : You can setup all the programs to be installed as well as basic programs.



**[Menu]**



Used to setup which program appear in Title Bar Start Menu.

Tab : Start-> Settings  
->  
Personal -> Menu  
Icon

All available programs appears in checklists. Check off the items you want to appear in the Title Bar Start Menu. If not checked, it appears in the Program Window. You may only have 7 items selected at any time.

# Settings

## Personal Setting



[Today]

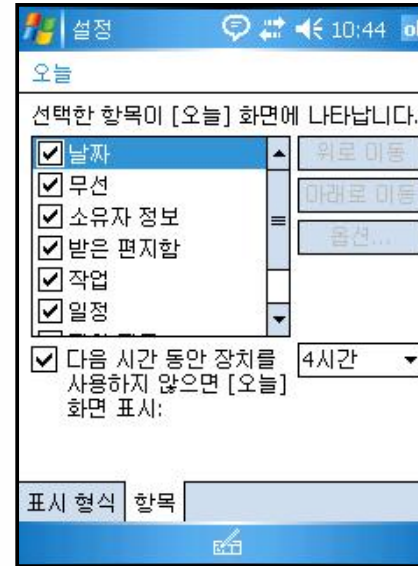


Allows you to select and draw up the background skin and screen to the style you want.

Tab : Start-> Settings -> Personal -> Today Icon

Indication Type Tab :

If copied the skin file (\*.TSK) into My Documents besides 2 skins, basically provided, it appears in Background Screen Setup List. Select the desired skin from Background Screen Setup List and then press OK.



Used to select the Program Information to be appeared in Today.

Tab : Start-> Settings -> Personal -> Today Icon

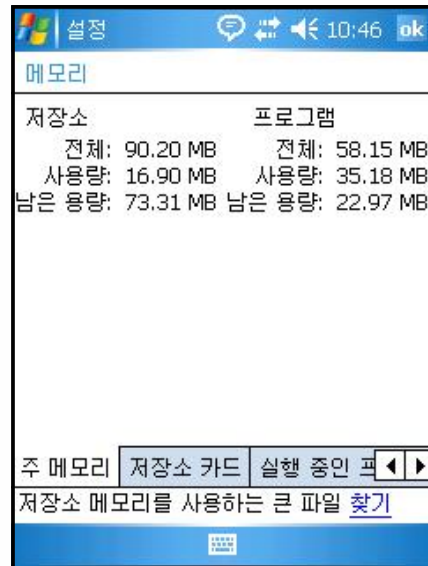
Item Tab :

As appeared in the list, it appears in Today screen. After selecting from the list, you can change the order using Up and Down keys.

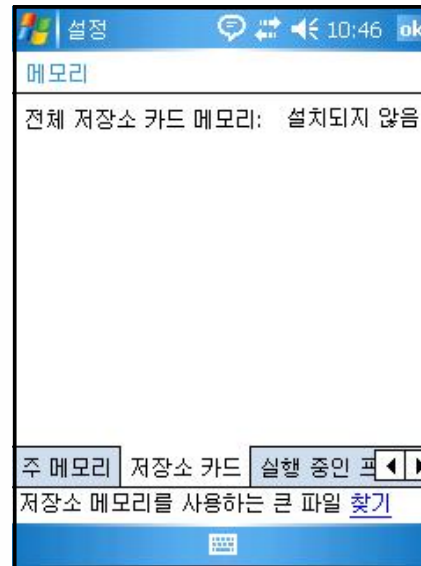
# Settings

## 2. System Settings

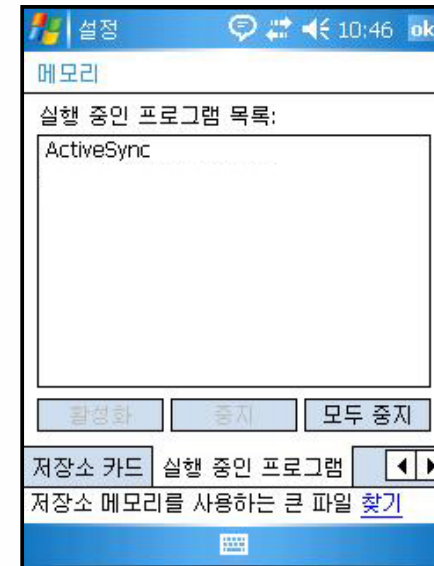
### [Memory]



Main Memory Tab :  
You can know the current state (used memory, available memory) of PDA Memory.



Storage Card Tab :  
You can know the used conditions (used memory, available memory) of SD memory card, inserted into PDA.

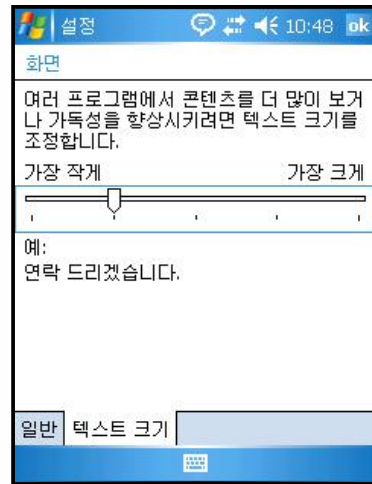
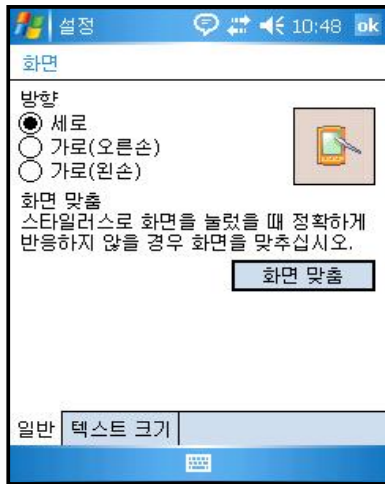


Running Program Tab :  
Displays running program lists and allows you to stop or pause.

# Settings

## 2. System Settings

### [Screen]



How to realign the screen :

1. Select the direction of realignment to Vertical or Horizontal (Right Hand, Left Hand).
2. Press OK to realign the screen.

Use “Screen Alignment” to re-align the stylus point accurately.

Text Size Settings :

Allows you to control the text size into 5 stages.

### [Removing Programs]



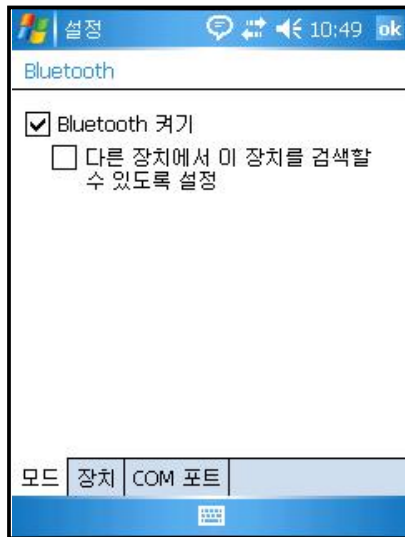
Lists the programs to be installed by an individual or the organization as well as OS-provided basic programs.

Removing Program :

1. Select the program you wish to remove in the List.
2. Then, press “Remove” button, and it will be removed automatically.

## 3. Connections Settings

### [Bluetooth]

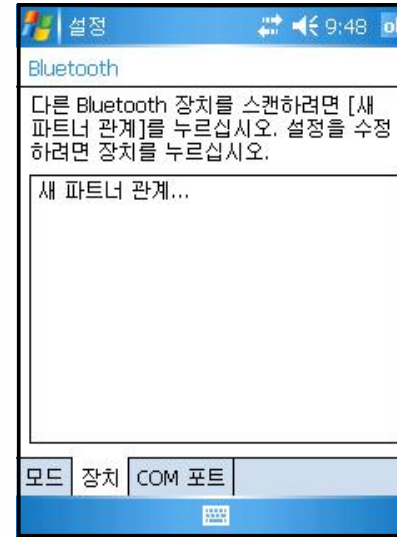


Allows you to communicate with Bluetooth devices.

Tab : Start-> Settings  
->  
Connections ->  
Bluetooth

Turn On Bluetooth : If checked off or not, it indicates Used/Not Used. In not use, always do not check this box. (To prevent a battery loss).

Settings enable to be searched from the other devices : Check off this box to make BM-300 discoverable to other devices.



### Bluetooth Settings

1. Press “New Partnership...” to scan the surrounding Bluetooth devices.

2. Select the device to be connected and then press “Next” button.

3. Enter the ‘passkey’ for the device and press “Next” button.

(Passkey is device dependent. Please refer to ‘Bluetooth Product Manual’).

4. Tap a device name to be connected and then press “Finish”.

5. The model name and icon appear and allow you to use them.

Make the surrounding Bluetooth devices to perform pairing.

Pairing Methods are device dependent. Please refer to ‘Bluetooth Product Manual



## 3. 연결 환경



[Network Card]



Wi-Fi를 통한 무선 인터넷을 설정하고 사용할 수 있습니다.

Tab : Start -> Settings-> Connections -> Network Card

Wireless Internet Settings allow you to setup the Network Card Settings enable to be connected at the surrounding AP.

### Wireless Internet Settings

1. If turned on Wi-Fi item of Wireless Manager, it detects the surrounding AP and shows up in the List.
2. Select the AP from Wireless Network Lists and press "Connect".

If no AP information, enter it manually.

1. In Wireless Network Lists window, click "Add New".
2. Enter the AP Name at "Network Name" in the Wireless Network Attributes" And, check off the AP Settings.
3. Press "OK" button.
4. You returns to the initial screen and the AP name you entered shows up in the screen.
5. Press "OK" button.
6. Press "Connect" to connect with Wireless LAN.

# Settings

## 3. Connections Settings

### [Wireless Manager]



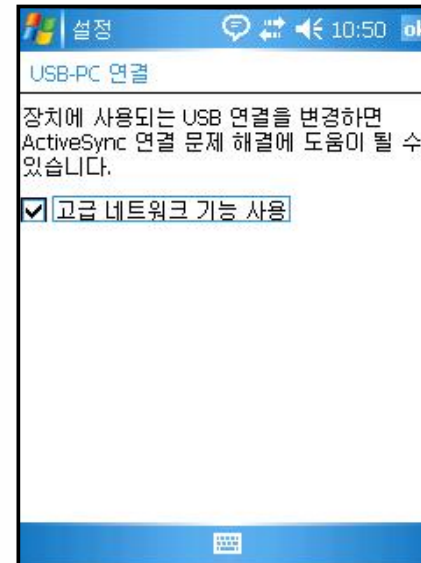
Course : Start -> Settings -> Connections -> Wireless Manager

Use “All” button to turn ON/OFF two functions at a time. Use “Wi-Fi” and “Bluetooth” buttons enable to turn ON/OFF respectively.

If turned on “Wi-Fi” or “Bluetooth”, it enables to perform detailed settings active. Though OFF, you can perform settings using Menu Button at the bottom of screen.



### [USB-PC Connection]



Allows you to set the communication settings between PC.

Tab : Start ->  
Settings->

Connections ->  
USB-PC

If unchecked “Advanced Network Function Used” box, the synchronization is disabled between PC.

If Active Sync performed the synchronization improperly after normal booting of PC, ensure where the checkbox checked off properly.

## 1. Q / A

Q : PDA sinks under the water. How can I do?

A : First, remove the battery from PDA and make it dry. If not operated after drying for a certain period, please contact our C/S center. It may require to replace the main board or other parts.

Q : cannot turn on PDA.

A : After charging for a certain period, recheck it.  
If not turn on after fully charged, please contact our C/S center.

Q : cannot charge PDA.

A : Check if PDA and PC or adapter connected properly. If the problem still persists, please contact our C/S center.

Q : Poor reception of DMB.

A : At the area where the network signal is too weak at your current location, you may not watch DMB properly.  
Please control the antenna or move another place.

Q : Can't find DMB channel.

A : Check if you are too far away from a base station for DMB.  
Some area can't receive DMB.

Q : PDA generates a heat.

A : It may generate a heat according to the used conditions.

Q : Battery life decreases.

A : Battery life varies depending on the conditions and environments where you use it.

If you encounter problems or errors when using the product, please call 1588-1380.

## 2. Customer Service Center

### [Before A/S]

Before A/S, you must backup your files and data from your equipment.  
In A/S center, we will not backup the data separately.  
Therefore, we will not be liable for any data loss/deletion.

### [ Bluebird Soft Customer Service Center]

Tel. No. : 1588-1380  
Fax. : 548-0870  
E-Mail : bluebird@bluebird.co.kr

Office Hours  
Weekdays : A.M. 9 : 00 ~ P.M. 6:00  
Saturdays : A.M. 9 : 00 ~ P.M. 2:00  
Sundays and Holidays off.

### A/S Reception Method

We make it a rule to receive A/S off by mail, home-delivery, or visit.  
If you purchased the product by third-party company, not by the manufacturer, you must do the user registration at our company before A/S.  
For the user registration, contact Bluebird soft Inc., Call Center(1588-1380).  
When sending to A/S center, please enclosure a bill or a receipt.  
If you sent along with the customer name, address, phone number, and symptoms, it can be treated more rapidly.  
You can ask A/S to the company you purchased or our company's Customer Service Center.  
Please do not damage the label which attached to the product by intention.  
Due to damaged label, the customer can be in a disadvantageous position.  
When sending the product to Bluebird for A/S, you must put it in a protective container.  
The damaged product during transportation is not guaranteed by our company.  
~~It is recommended to use the container and protective cover, provided with the product.~~  
Transport it in safe. Bluebird shall have no liability for missed equipment during transportation.

# Appendix

## 3. A/S Description

### [ Charged or Free A/S Regulations ]

Customer Loss Type		Compensation	
		Within the guaranteed Period	After the guaranteed Period
Required the important repair within 10 days after purchasing.		Replace or refund.	
Required the important repair within 1 month after purchasing.		Replace or repair for free	
Required the important repair within 1 month after being replaced.		Replace or refund.	
Replacement Impossible within 1 month.		Refund	
Repairable	When a failure occurred 3 times due to the same defects.	Repair for free	A charged repair
	When a failure occurred 4 times due to the same defects.	Replace or refund.	A charged repair
	When a failure occurred 5 times due to several defects.		
Un-repairable	When we missed the product asked to be repaired by the customer.	Replace or refund.	Fixed Amount Depreciation and then replace
	When impossible to repair within 1 month		
	When impossible to replace	Refund	Fixed Amount Depreciation plus 10% additional charges (The Max. price – the price purchased)
According to the Regulations on the Customer Claims Compensation. Parts maintenance period : 3 years			

Replace with the same product. If impossible to replace with the same product, replace with the equivalent. But, if the customer didn't want the equivalent, refund it. Refund based on the price as written in a receipt when you purchased the product. If the price of a bill higher than ordinary price, refund based on ordinary price in that it might include other additional charges.

## 3. A/S Description

### Charged Service

1. When requesting the service, if it is not a failure , it may require extra subscription.
  - Service due to poor use of the customer.
  - Lost password,
  - Used the program which may have an adverse impact on the system (over clock, system setting forced change, personal development).
2. A failure due to the customer's mistake.
  - Due to the Customer's misuse or neglect (drop, flooding, shock, damage, excessive operation).
  - Alterations or repair carried out by unauthorized persons.
  - Due to the customer's mistake or accidental damage
  - Due to the Parts or accessories, not honest goods.
3. Other causes
  - A failure by an act of God (Fire, damage from sea wind, flood damage, abnormal power).
  - consumables' life exhausted (battery, antenna, each sorts of attachments).
4. First Charged Service and then Settlement
  - For a charged service, if the same failure occurred in normal conditions within 2 months(60 days), it shall be repaired for free.

### For the followings, it is not returnable or refundable.

If you removed the sealing from the supplied product with sealing package,

If the product lost or damaged due to the customer's misuse or a natural disaster.

If you lost other accessories (CD, diskette, manual, connection cables, and etc.) of the product

If a failure occurred in the product after 10 days from the day of purchase, you can replace it one-to-one or request A/S. But not returnable and refundable.

# Quality Warranty

Product Name	PDA	Model Name	BM-300
Date of purchase		Manufacturing No.	
Place of purchase		Warranty Period	1 year from the date of purchase

Thank for your purchasing our product.

If you have no purchase receipt and warranty card due to missing, calculate the warranty period to the date after 3 months from the date of manufacture (manufacture no., Examined Certificate).

For accessories including batteries, you can receive the A/S only if corresponded to the sales record of A/S Center.

If not corresponded to the record due to the customer's mistake, they can be repaired or replaced with charged.

## < Product Warranty >

1. Bluebirdsoft Inc. (referred as Bluebird hereinafter) guarantees the product according to the regulations on the Customer's Damage Compensation as follows.
2. Within the warranty period, Bluebird shall repair or replace the defect only upon presentation of reasonable evidence and only if the warranty covered.
3. If impossible to repair or replace the fault, though within the limits and period of warranty, Bluebird shall refund the purchase money within the specified period after notification of the fault.
4. Bluebird has no liability to repair, replace or refund the fault until the customer returned the fault product to the A/S center. The fault product shall be replace with the equivalent new one based on its capacity.
5. The warranty is available in all countries where the product is officially distributed by Bluebird.  
(Contracts on the additional warranty service such as a on-site service.).
6. The product of Bluebird can contain regenerated parts, components, or materials, equivalent with new products in capacity.
7. For software products, the warranty is valid only if not running the programming command. This warranty is not valid for the software product while operating (e.g. the product will not stop or make an error while operating).

## **FCC Information**

This device complies with Part 15 of the FCC Rules. Operation is subject to the following two conditions:

- (1) This Device may not cause harmful interface, and
- (2) This device must accept any interference received, including interference that may cause undesired operation.

Note: This equipment has been tested and found to comply with the limits for CLASS B digital device, pursuant to Part 15 of FCC Rules. These limits are designed to provide reasonable protection against harmful interference when the equipment is operated in a commercial environment. This equipment generates, uses and can radiate radio frequency energy and, if not installed and used in accordance with the instructions, may cause harmful interference to radio communications. However, there is no guarantee that interference will not occur in a particular installation. If this equipment does cause harmful interference to radio or television reception, which can be determined by turning the equipment off and on, the user is encouraged to try correct the interference by one or more of the following measures:

- 1.1. Reorient or relocate the receiving antenna.
- 1.2. Increase the separation between the equipment and receiver.
- 1.3. Connect the equipment into an outlet on a circuit different from that to which receiver is connected.
- 1.4. Consult the dealer or experienced radio/TV technician for help.

## **WARNING**

Changes or modifications not expressly approved by the manufacturer could void the user's authority operate the equipment.

**FCC RF Radiation Exposure Statement: The equipment complies with FCC RF radiation exposure limits set forth for an uncontrolled environment. This device and its antenna(s) must not be co-located or operating in conjunction with any other antenna or transmitter. This device is approved for handheld operation only.**