

TEST REPORT

OF

FCC Part 22, 24, 15 Subpart B

FCC ID: SS4BM150RE

Equipment Under Test : PDA
Model Name : BM-150R
Serial No. : N/A
Applicant : Bluebird Soft, Inc.
Manufacturer : Bluebird Soft, Inc.
Date of Test(s) : 2007-09-10 ~ 2007-11-09
Date of Issue : 2007-12-20

In the configuration tested, the EUT complied with the standards specified above.

Tested By:



Date

2007-12-20

Geoffrey Do

Approved By



Date

2007-12-20

Denny Ham

The results shown in this test report refer only to the sample(s) tested unless otherwise stated. This test report cannot be reproduced, except in full, without prior written permission of the Company.

INDEX

<u>TABLE OF CONTENTS</u>	Page
1. General Information -----	3
2. Conducted Power Line Test -----	7
3. RF Radiated Output Power -----	12
4. Spurious Radiated Emission -----	16
5. Field Strength of Radiated Emissions -----	21
Appendix A. Photo of Radiated Emission Test	
Appendix B. Photos of Field Strength Test	
Appendix C. Photos of Conducted Power Line Test	
Appendix D. Photos of the EUT	

The results shown in this test report refer only to the sample(s) tested unless otherwise stated. This test report cannot be reproduced, except in full, without prior written permission of the Company.

1. General Information

1.1. Testing Laboratory

SGS Testing Korea Co., Ltd.

-Wireless Div. 2FL, 18-34, Sanbon-dong, Gunpo-si, Gyeonggi-do, Korea 435-040
 - 705, Dongchun-Dong Sooji-Gu, Yongin-Shi, Kyungki-Do, South Korea.

www.electrolab.kr.sgs.com

Telephone : +82 +31 428 5700

FAX : +82 +31 427 2371

1.2. Details of Applicant

Applicant : Bluebird Soft, Inc.
 Address : 558-5, Sinsa-dong, Kangnam-gu, seoul, Korea
 Contact Person : Gi-Cheol Sung
 Phone No. : 82-2-541-4002
 Fax No. : 82-2-548-0870

1.3. Description of EUT

Kind of Product	PDA
Model Name	BM-150R
Serial Number	N/A
Power Supply	DC 3.7 V
CDMA Module FCC ID	T42ICM-E600
Frequency Range	824.70 MHz ~ 848.31 MHz(CDMA - 1xRTT & EVDO Release0) 2412 MHz ~ 2462 MHz(11b/g), 2402 MHz ~ 2480 MHz(Bluetooth) 88.1 MHz ~ 107.9 MHz(FM Transmitter)
Modulation Technique	DSSS(11b), OFDM(11g), FHSS(Bluetooth), DQPSK(CDMA - 1xRTT & EVDO Release0), FM(FM Transmitter)
Number of Channels	11 CH(11b/g), 79 CH(Bluetooth), 20 CH(CDMA - 1xRTT & EVDO Release0), 199 CH(FM Transmitter)
Operating Conditions	-20 °C ~ 55 °C
Antenna Type	Fixed Type(11b/g, Bluetooth), Inverted F Type(CDMA), Pannel ANT(FM Transmitter)
Antenna Gain	-3.72 dBi(WLAN), -1.93 dBi(Bluetooth), -0.48 dBi(CDMA - 1xRTT & EVDO Release0)

1.4. Details of modification

-N/A

The results shown in this test report refer only to the sample(s) tested unless otherwise stated. This test report cannot be reproduced, except in full, without prior written permission of the Company.

1.5. Test Equipment List

EQUIPMENT	MANUFACTURER	MODEL	CAL DUE.
Signal Generator	Agilent	E4438C	May 2008
Spectrum Analyzer	Agilent	E4440A	May 2008
Spectrum Analyzer	H.P.	8593E	Sep. 2008
DC Power Supply	Agilent	6674A	May 2008
DC Power Supply	Agilent	E3631A	May 2008
Attenuator	Agilent	8494B	May 2008
Two-Line V-Network	NNB 41	Schaffner	Sep. 2008
Test Receiver	Rohde & Schwarz	ESVS10	May 2008
Test Receiver	Rohde & Schwarz	ESHS10	Aug. 2008
Ultra-Broadband Antenna	Rohde & Schwarz	HL562	Sep. 2008
Horn Antenna	Electro-Metrics	RGA-60	Dec. 2008
Log Periodic Antenna	Rohde & Schwarz	HL223	Sep. 2009
Communication Antenna	AR	AT 4002	N.C.R
Band Reject Filter	Wainwright	WRCG824/849-814/85960/10SS	May 2008

The results shown in this test report refer only to the sample(s) tested unless otherwise stated. This test report cannot be reproduced, except in full, without prior written permission of the Company.

EQUIPMENT	MANUFACTURER	MODEL	CAL DUE.
Highpass Filter	Wainwright	WHK3.0/18G-10SS	Dec.2008
Biconcai Antenna	R&S	HK116	May 2009
Log-Periodic Antenna	R&S	HL223	May 2009
Mobile Test Unit	Agilent	E5515C	May 2008
Anechoic Chamber	SY Corporation	L x W x H 9.6 x 6.4 x 6.4	Aug. 2008

The results shown in this test report refer only to the sample(s) tested unless otherwise stated. This test report cannot be reproduced, except in full, without prior written permission of the Company.

1.6. Summary of Test Results

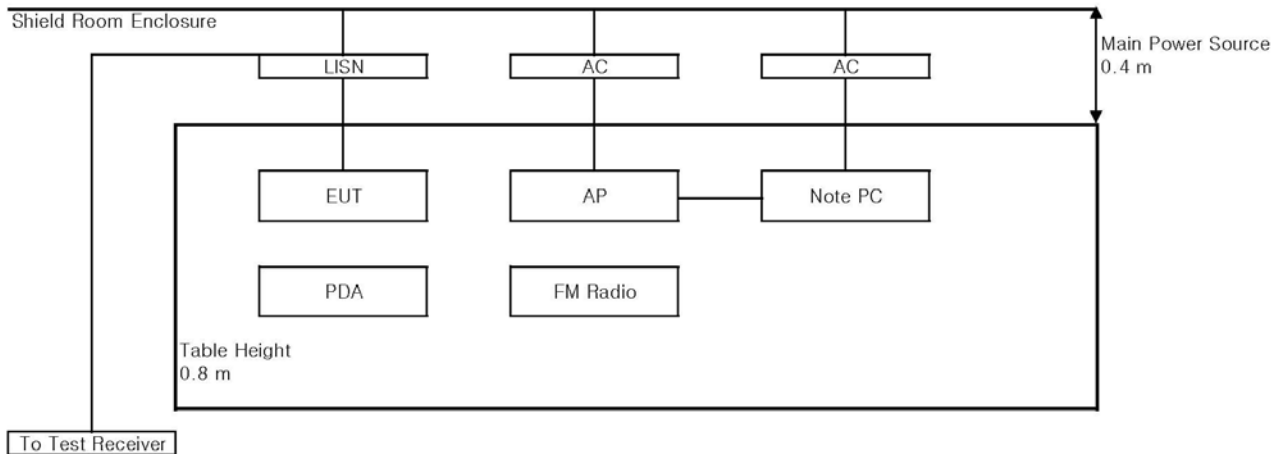
The EUT has been tested according to the following specifications:

APPLIED STANDARD:FCC Part 22, 24,15 Subpart B		
Standard Section	Test Item	Result
15.107(a)	AC Power Conducted Emission	Complied
15.109(a)	Field Strength of Radiated Emission	Complies
22.913(a) 24.232(c)	RF Radiated Output Power	Complied
22.917(a) 24.238(a)	Spurious Radiated Emission	Complied

The results shown in this test report refer only to the sample(s) tested unless otherwise stated. This test report cannot be reproduced, except in full, without prior written permission of the Company.

2. Conducted Power Line Test

2.1. Test Setup



2.2. Limit

According to §15.107(a) for an intentional radiator that is designed to be connected to the public utility (AC) power line, the radio frequency voltage that is conducted back onto the AC power line on any frequency or frequencies, within the band 150 kHz to 30 MHz, shall not exceed the limits in the following table, as measured using a 50 uH/50 ohm line impedance stabilization network(LISN).

Compliance with the provision of this paragraph shall on the measurement of the radio frequency voltage between each power line and ground at the power terminal. The lower applies at the boundary between the frequency ranges.

Frequency of Emission (MHz)	Conducted limit (dBµV)	
	Quasi-peak	Average
0.15 – 0.50	66-56*	56-46*
0.50 – 5.00	56	46
5.00 – 30.0	60	50

* Decreases with the logarithm of the frequency.

The results shown in this test report refer only to the sample(s) tested unless otherwise stated. This test report cannot be reproduced, except in full, without prior written permission of the Company.

2.3. Test Procedures

Radiated emissions from the EUT were measured according to the dictates of ANSI C63.4:2003

1. The test procedure is performed in a 6.5m × 3.6m × 3.6m (L×W×H) shielded room. The EUT along with its peripherals were placed on a 1.0m(W)× 1.5m(L) and 0.8m in height wooden table and the EUT was adjusted to maintain a 0.4 meter space from a vertical reference plane.
2. The EUT was connected to power mains through a line impedance stabilization network (LISN) which provides 50 ohm coupling impedance for measuring instrument and the chassis ground was bounded to the horizontal ground plane of shielded room.
3. All peripherals were connected to the second LISN and the chassis ground also bounded to the horizontal ground plane of shielded room.
4. The excess power cable between the EUT and the LISN was bundled. The power cables of peripherals were unbundled. All connecting cables of EUT and peripherals were moved to find the maximum emission.

The results shown in this test report refer only to the sample(s) tested unless otherwise stated. This test report cannot be reproduced, except in full, without prior written permission of the Company.

2.4. Test Results

The following table shows the highest levels of conducted emissions on both phase of Hot and Neutral line.

Ambient temperature : 23 °C Relative humidity : 42 %

Frequency range : 0.15 MHz – 30 MHz

Measured Bandwidth : 9 kHz

FREQ. (MHz)	LEVEL(dBuV)		LINE	LIMIT(dBuV)		MARGIN(dB)	
	Q-Peak	Average		Q-Peak	Average	Q-Peak	Average
0.19	51.90	32.20	N	64.04	54.04	12.14	21.84
0.20	58.30	29.60	N	63.61	53.61	5.31	24.01
0.24	53.00	24.20	N	62.10	52.10	9.10	27.90
1.31	32.00	20.90	N	56.00	46.00	24.00	25.10
1.56	28.70	18.60	N	56.00	46.00	27.30	27.40
6.70	38.40	29.30	N	60.00	50.00	21.60	20.70
0.15	56.20	30.50	H	66.00	56.00	9.80	25.50
0.20	49.50	25.80	H	63.61	53.61	14.11	27.81
0.37	34.10	18.90	H	58.50	48.50	24.40	29.60
1.31	39.50	26.30	H	56.00	46.00	16.50	19.70
1.56	36.60	24.10	H	56.00	46.00	19.40	21.90
6.70	40.40	31.80	H	60.00	50.00	19.60	18.20

Note ;

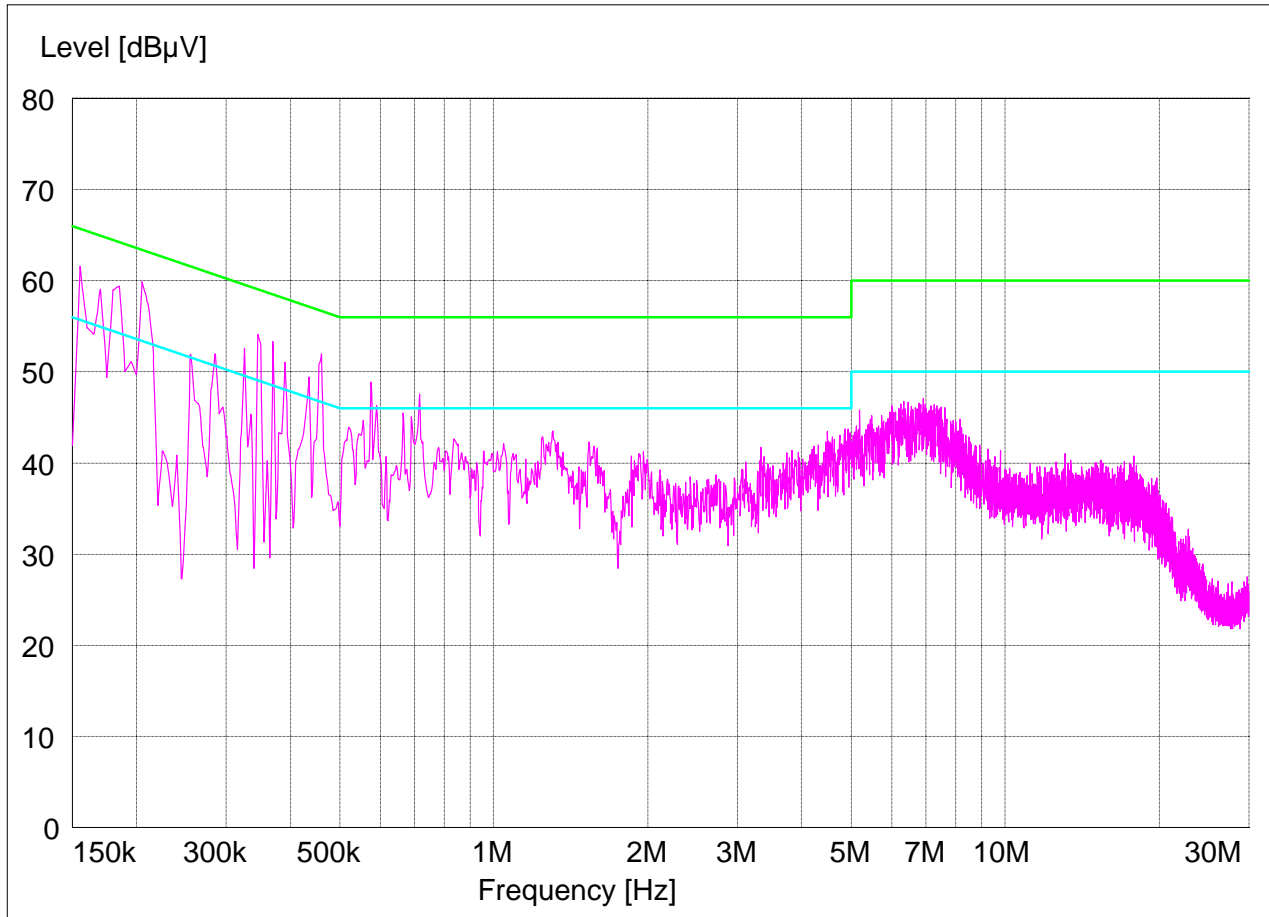
Line (H) : Hot

Line (N) : Neutral

The results shown in this test report refer only to the sample(s) tested unless otherwise stated. This test report cannot be reproduced, except in full, without prior written permission of the Company.

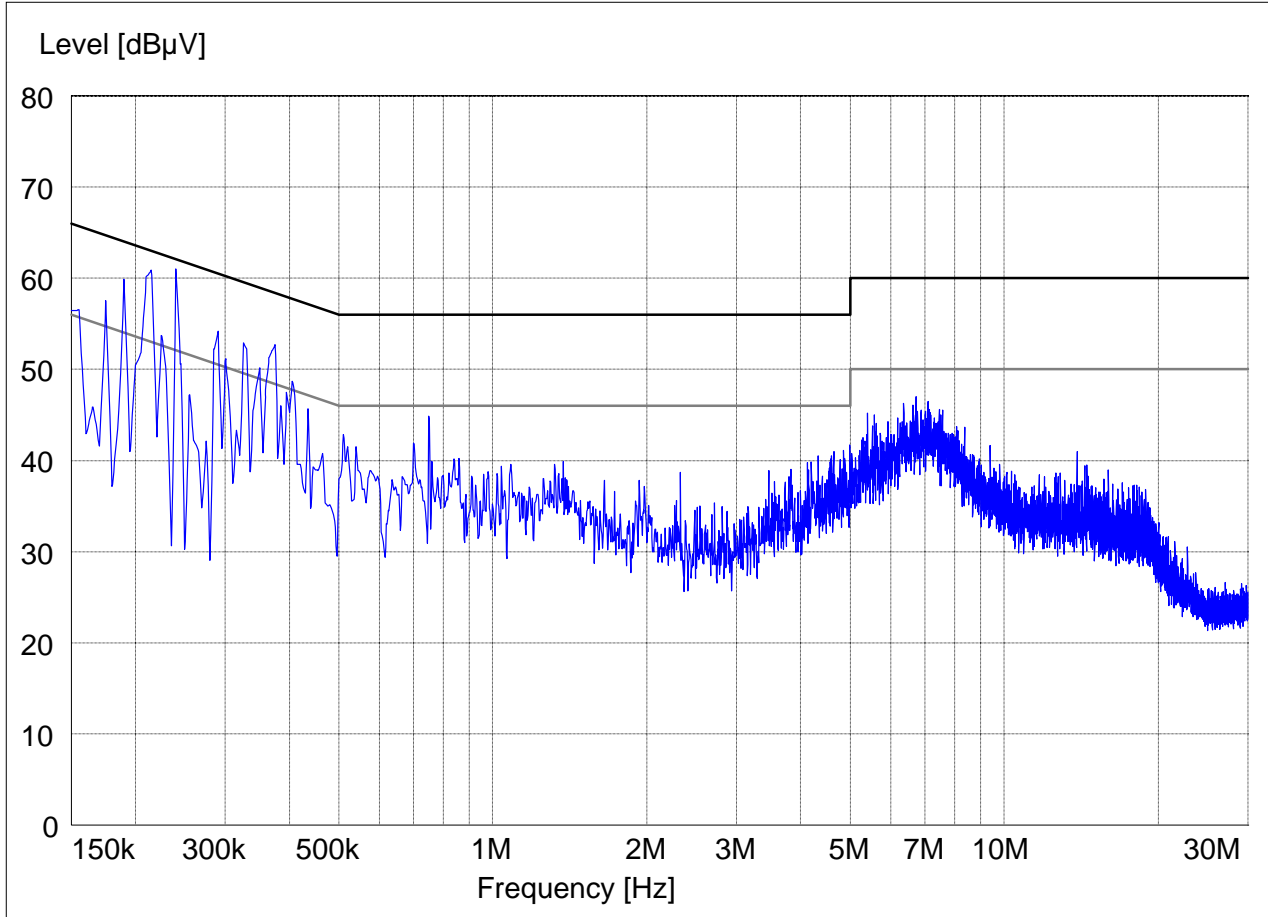
Plot of Conducted Power line

Test mode : (Hot)



The results shown in this test report refer only to the sample(s) tested unless otherwise stated. This test report cannot be reproduced, except in full, without prior written permission of the Company.

Test mode : (Neutral)

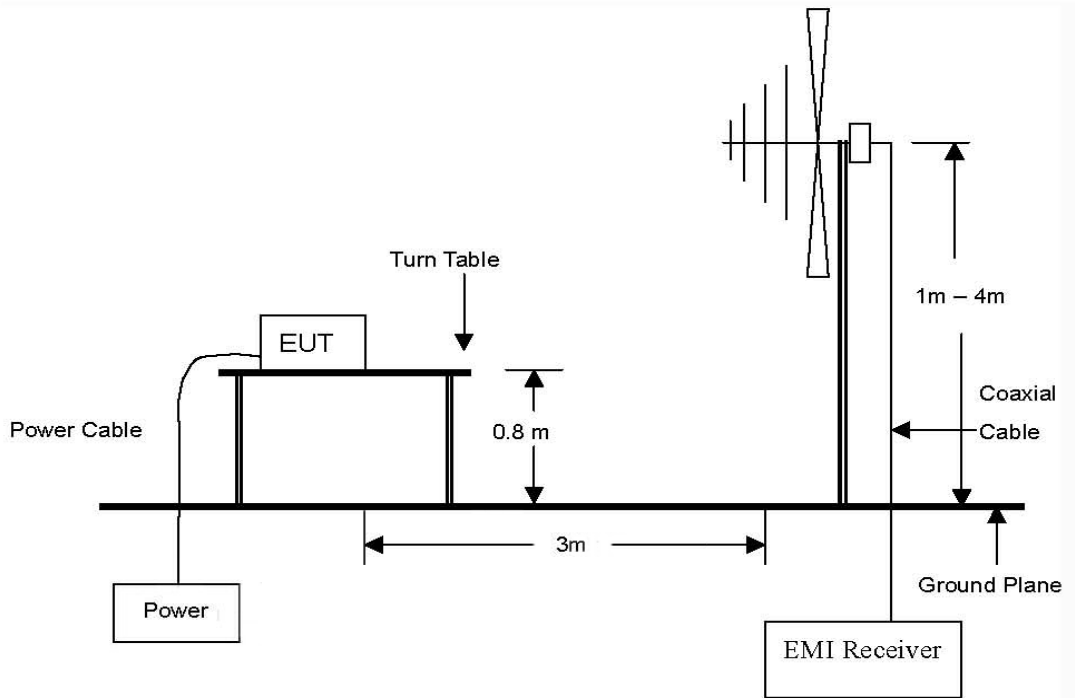


The results shown in this test report refer only to the sample(s) tested unless otherwise stated. This test report cannot be reproduced, except in full, without prior written permission of the Company.

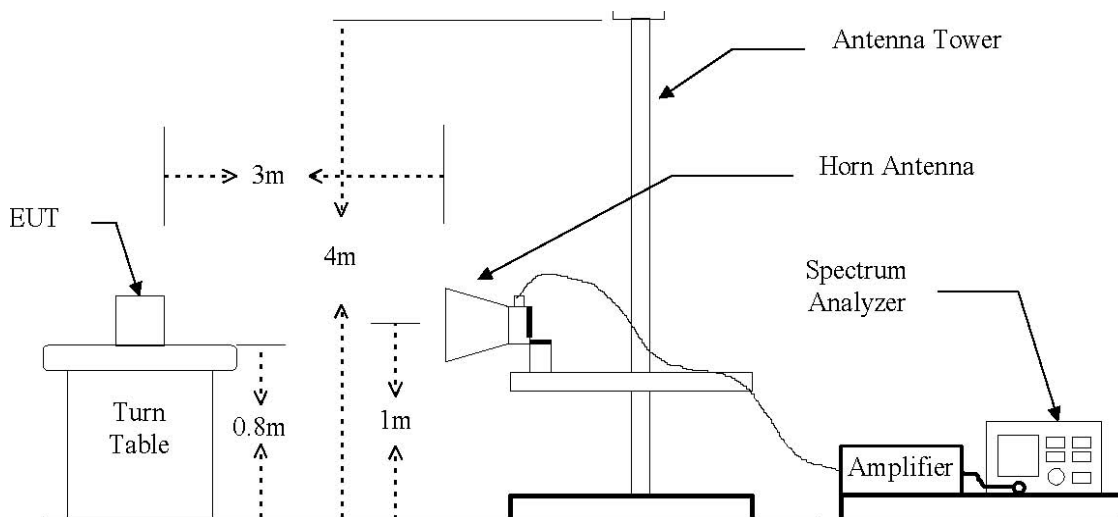
3. RF Radiated Output Power

3.1. Test Setup

The diagram below shows the test setup that is utilized to make the measurements for emission from 30 MHz to 1 GHz Emissions.

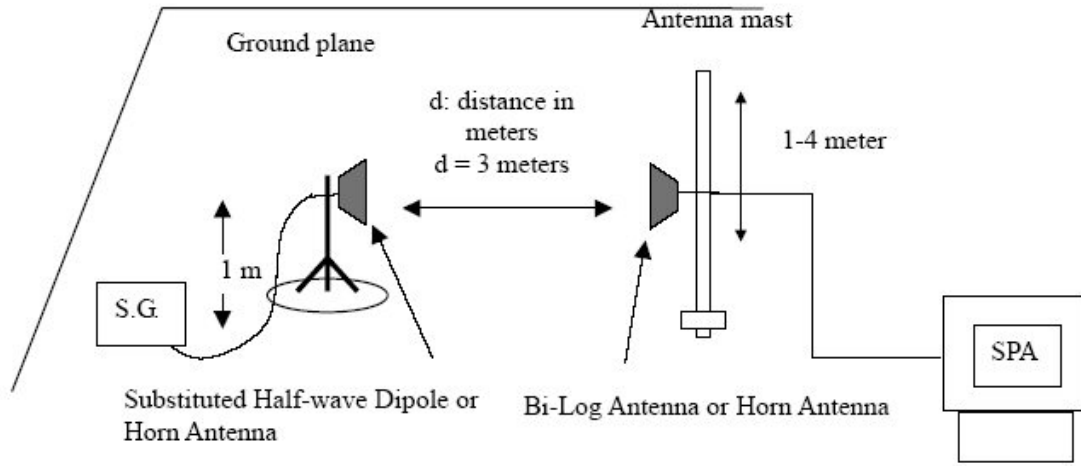


The diagram below shows the test setup that is utilized to make the measurements for emission from 1 GHz to 18 GHz Emissions.



The results shown in this test report refer only to the sample(s) tested unless otherwise stated. This test report cannot be reproduced, except in full, without prior written permission of the Company.

The diagram below shows the test setup for substituted method



The results shown in this test report refer only to the sample(s) tested unless otherwise stated. This test report cannot be reproduced, except in full, without prior written permission of the Company.

3.2. Limit

FCC §22.913(a), the ERP of mobile transmitters must not exceed 7 watts. FCC §24.232(c) Mobile/portable stations are limited to 2 watts e.i.r.p. peak power and the equipment must employ means to limit the power to the minimum necessary for successful communications.

3.3. Test Procedure : Based on TIA-603C 2004

1. On a test site, the EUT shall be placed at 80cm height on a turn table, and in the position closest to normal use as declared by the applicant.
2. The test antenna shall be oriented initially for vertical polarization located 4m from EUT to correspond to the frequency of the transmitter.
3. The output of the test antenna shall be connected to the measuring receiver and the peak detector is used for the measurement.
4. The transmitter shall be switched on, the measuring receiver shall be tuned to the frequency of the transmitter under test.
5. The test antenna shall be raised and lowered through the specified range of height until a maximum signal level is detected by the measuring receiver.
6. The transmitter shall then be rotated through 360° in the horizontal plane, until the maximum signal level is detected by the measuring receiver.
7. The test antenna shall be raised and lowered again through the specified range of height until a maximum signal level is detected by the measuring receiver.
8. The maximum signal level detected by the measuring receiver shall be noted.
9. The transmitter shall be replaced by a horn (substitution antenna).
10. The substitution antenna shall be orientated for vertical polarization and the length of the substitution antenna shall be adjusted to correspond to the frequency of the transmitter.
11. The substitution antenna shall be connected to a calibrated signal generator.
12. In necessary, the input attenuator setting of the measuring receiver shall be adjusted in order to increase the sensitivity of the measuring receiver.
13. The test antenna shall be raised and lowered through the specified range of height to ensure that the maximum signal is received.
14. The input signal to the substitution antenna shall be adjusted to the level that produces a level detected by the measuring receiver, which is equal to the level noted while the transmitter radiated power was measured, corrected for the change of input attenuator setting of the measuring receiver.
15. The input level to the substitution antenna shall be recorded as power level in dBm, corrected for any change of input attenuator setting of the measuring receiver.
16. The measurement shall be repeated with the test antenna and the substitution antenna orientated for horizontal polarization.
17. The measure of the effective radiated power is the large of the two levels recorded, at the input to the substitution antenna, corrected for gain of the substitution antenna if necessary.
18. The ERP/EIPR test under RC5/SO55.

The results shown in this test report refer only to the sample(s) tested unless otherwise stated. This test report cannot be reproduced, except in full, without prior written permission of the Company.

3.4. Test Results

Ambient temperature : 21 °C Relative humidity : 43%

CDMA 2000(1xRTT)

Frequency (MHz)	Ant. Pol. (H/V)	Amp- C.L (dB)	S.G Power Level (dBm)	Antenna Gain (dBd)	E. R. P.	
					(dBm)	(mW)
824.70	H	33.30	-14.30	4.59	23.09	203
836.52	H	33.30	-14.79	4.58	23.64	231
848.31	H	33.30	-13.97	4.57	24.87	271

CDMA 2000(1xEVDO) Release 0.

Frequency (MHz)	Ant. Pol. (H/V)	Amp- C.L (dB)	S.G Power Level (dBm)	Antenna Gain (dBd)	E. R. P.	
					(dBm)	(mW)
824.70	H	33.27	-14.29	4.59	23.57	227
836.52	H	33.27	-14.74	4.58	23.11	204
848.31	H	33.27	-13.99	4.57	23.85	242

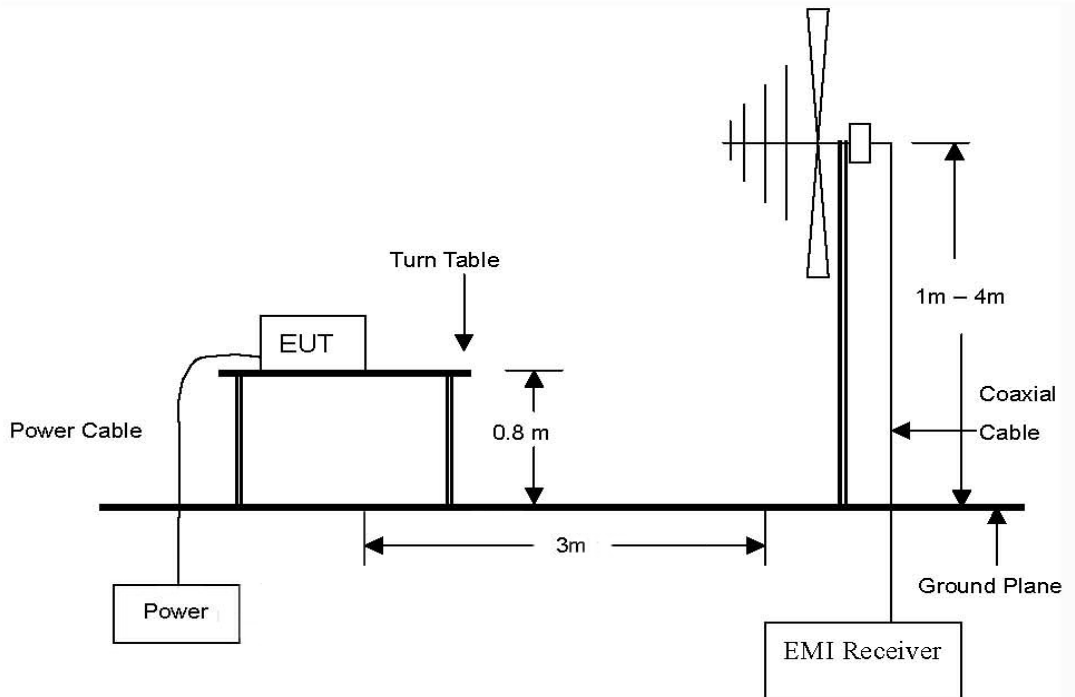
Remake: 1. ERP= SG Power Level +Amp-C.L. +Antenna Gain

The results shown in this test report refer only to the sample(s) tested unless otherwise stated. This test report cannot be reproduced, except in full, without prior written permission of the Company.

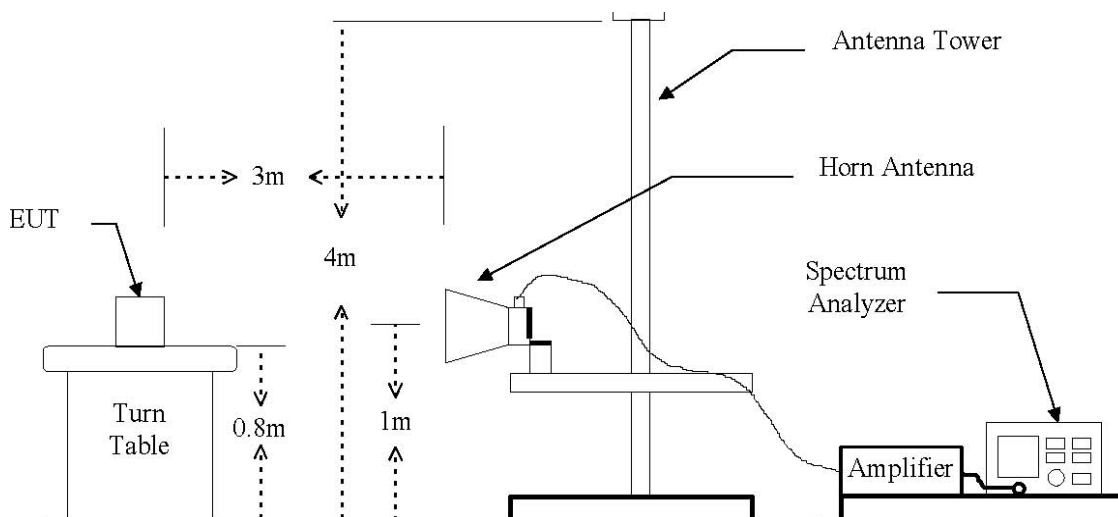
4. Spurious Radiated Emission

4.1. Test Setup

The diagram below shows the test setup that is utilized to make the measurements for emission from 30 MHz to 1 GHz Emissions.

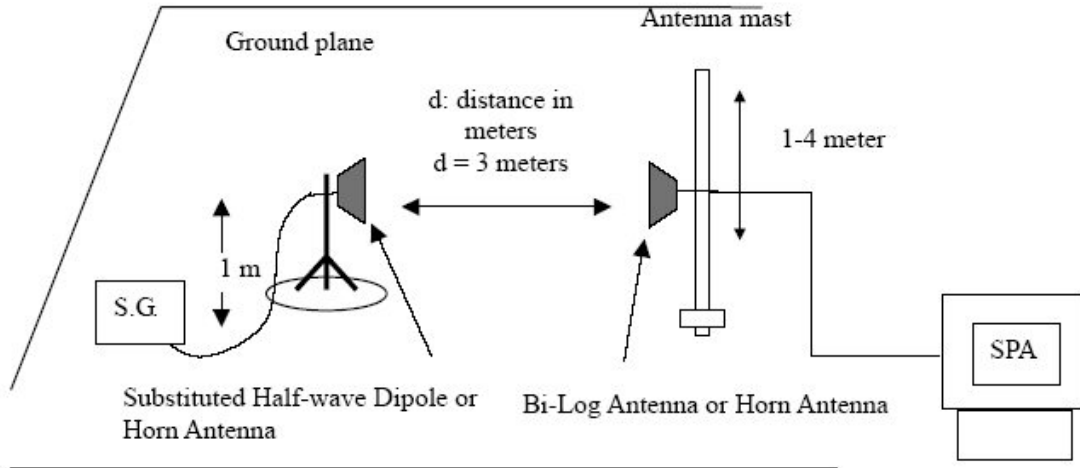


The diagram below shows the test setup that is utilized to make the measurements for emission from 1 GHz to 18 GHz Emissions.



The results shown in this test report refer only to the sample(s) tested unless otherwise stated. This test report cannot be reproduced, except in full, without prior written permission of the Company.

The diagram below shows the test setup for substituted method



The results shown in this test report refer only to the sample(s) tested unless otherwise stated. This test report cannot be reproduced, except in full, without prior written permission of the Company.

4.2. Limit

§ 22.917(a) and §24.238 (a) Out of band emissions. The power of any emission outside of the authorized operating frequency must be attenuated below the transmitting (P) by a factor of at least $43+10\log(P)$ dB.

4.3. Test Procedure

1. On a test site, the EUT shall be placed at 0.8cm height on a turn table, and in the position closest to normal use as declared by the applicant.
2. The test antenna shall be oriented initially for vertical polarization located 4m from EUT to correspond to the frequency of the transmitter.
3. The output of the test antenna shall be connected to the measuring receiver and the peak detector is used for the measurement.
4. The transmitter shall be switched on, the measuring receiver shall be tuned to the frequency of the transmitter under test.
5. The test antenna shall be raised and lowered through the specified range of height until a maximum signal level is detected by the measuring receiver.
6. The transmitter shall then be rotated through 360° in the horizontal plane, until the maximum signal level is detected by the measuring receiver.
7. The test antenna shall be raised and lowered again through the specified range of height until a maximum signal level is detected by the measuring receiver.
8. The maximum signal level detected by the measuring receiver shall be noted.
9. The transmitter shall be replaced by a horn (substitution antenna).
10. The substitution antenna shall be orientated for vertical polarization and the length of the substitution antenna shall be adjusted to correspond to the frequency of the transmitter.
11. The substitution antenna shall be connected to a calibrated signal generator.
12. In necessary, the input attenuator setting of the measuring receiver shall be adjusted in order to increase the sensitivity of the measuring receiver.
13. The test antenna shall be raised and lowered through the specified range of height to ensure that the maximum signal is received.
14. The input signal to the substitution antenna shall be adjusted to the level that produces a level detected by the measuring receiver, which is equal to the level noted while the transmitter radiated power was measured, corrected for the change of input attenuator setting of the measuring receiver.
15. The input level to the substitution antenna shall be recorded as power level in dBm, corrected for any change of input attenuator setting of the measuring receiver.
16. The measurement shall be repeated with the test antenna and the substitution antenna orientated for horizontal polarization.
17. The measure of the effective radiated power is the large of the two levels recorded, at the input to the substitution antenna, corrected for gain of the substitution antenna if necessary
18. Spurious radiated emission was tested under RC5/SO55.

The results shown in this test report refer only to the sample(s) tested unless otherwise stated. This test report cannot be reproduced, except in full, without prior written permission of the Company.

4.4. Test Results

Ambient temperature : 21 °C Relative humidity : 43%

CDMA 2000(1xRTTT)

Frequency (MHz)	Ant.Pol. (H/V)	SG reading (dBm)	CL (dB)	Gain (dBi)	E.I.R.P. (dBm)	Limit (dBm)	Margin (dB)
TX LOW channel (824.7 MHz)							
1649.40	V	-33.31	1.02	8.08	-26.25	-13.00	13.25
2474.10	H	-35.61	1.06	9.91	-26.76	-13.00	13.76
3298.80	H	-39.33	1.06	10.84	-29.55	-13.00	16.55
TX MID Channel (836.52 MHz)							
1673.04	V	-35.44	1.02	8.17	-28.29	-13.00	15.29
2509.56	H	-37.81	1.06	9.96	-28.91	-13.00	15.91
3346.08	V	-39.31	1.06	10.88	-29.49	-13.00	16.49
TX HIGH Channel (848.31 MHz)							
1696.62	H	-33.87	1.02	8.25	-26.64	-13.00	13.64
2544.93	H	-35.97	1.06	10.00	-27.03	-13.00	14.03
3393.24	V	-39.67	1.06	10.92	-29.81	-13.00	16.81

- Remake: 1. No more harmonic above 3rd harmonic for all channel.
 2. EIRP = S.G.output(dBm) + Antenna Gain(dBi) - Cable(dB)
 3. The effective radiated power record the largest level between the two levels with Ant.Pol.(H/V)

The results shown in this test report refer only to the sample(s) tested unless otherwise stated. This test report cannot be reproduced, except in full, without prior written permission of the Company.

CDMA 2000(1xEVDO) Release 0.

Frequency (MHz)	Ant.Pol. (H/V)	SG reading (dBm)	CL (dB)	Gain (dBi)	E.I.R.P. (dBm)	Limit (dBm)	Margin (dB)
TX LOW channel (824.7 MHz)							
1648.4	H	-33.34	1.02	8.08	-26.28	-13.00	13.28
2472.6	V	-35.79	1.06	9.91	-26.94	-13.00	13.94
3296.5	V	-39.47	1.06	10.84	-29.69	-13.00	16.69
TX MID Channel (836.52 MHz)							
1673.2	H	-35.38	1.02	8.17	-28.23	-13.00	15.23
2509.8	H	-37.85	1.06	9.96	-28.95	-13.00	15.95
3344.6	V	-39.43	1.06	10.88	-29.61	-13.00	16.61
TX HIGH Channel (848.31 MHz)							
1697.6	H	-33.85	1.02	8.25	-26.62	-13.00	13.62
2546.4	H	-35.99	1.06	10.00	-27.05	-13.00	14.05
3392.7	V	-39.57	1.06	10.92	-29.71	-13.00	16.71

- Remake: 1. No more harmonic above 3rd harmonic for all channel.
 2. EIRP = S.G.output(dBm) + Antenna Gain(dBi) - Cable(dB)
 3. The effective radiated power record the largest level between the two levels with Ant.Pol.(H/V)

The results shown in this test report refer only to the sample(s) tested unless otherwise stated. This test report cannot be reproduced, except in full, without prior written permission of the Company.

5. Field Strength of Radiated Emissions

5.1. Limit

According to §15.109(a), Except for Class A digital devices, the field strength of radiated emission from unintentional radiator at a distance of 3 m shall not exceed the following values:

Frequency (MHz)	Distance (Meters)	Radiated (dB μ V/m)	Radiated (μ V/m)
30 - 88	3	40.0	100
88 – 216	3	43.5	150
216 – 960	3	46.0	200
Above 960	3	54.0	500

5.2. Test Procedure

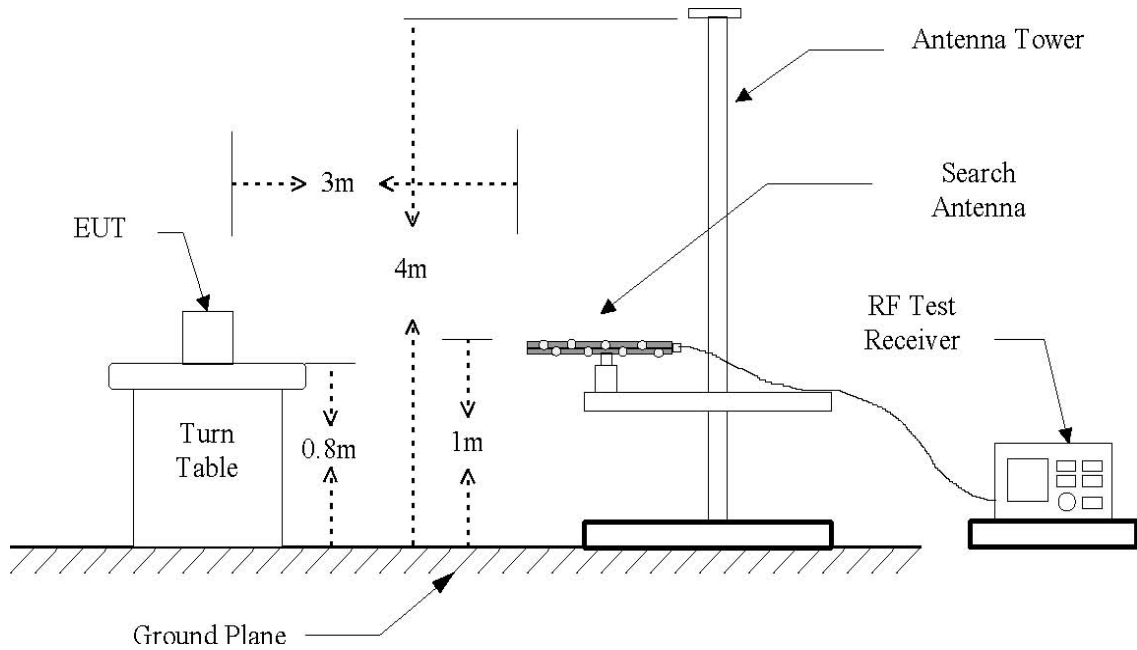
1. The EUT was placed on the top of a rotating table 0.8 meters above the ground at a 3 meter anechoic chamber test site. The table was rotated 360 degrees to determine the position of the highest radiation.
2. During performing radiated emission below 1 GHz, the EUT was set 3 meters away from the interference-receiving antenna, which was mounted on the top of a variable-height antenna tower. During performing radiated emission above 1 GHz, the EUT was set 1 meter away from the interference-receiving antenna.
3. The antenna is a broadband antenna, and its height is varied from one meter to four meters above the ground to determine the maximum value of the field strength. Both horizontal and vertical polarization of the antenna are set to make the measurement.
4. For each suspected emission, the EUT was arranged to its worst case and then the antenna was tuned to heights from 1 meter to 4 meters and the table was turned from 0 degrees to 360 degrees to find the maximum reading.
5. The test-receiver system was set to Peak Detect Function and Specified Bandwidth with Maximum Hold Mode.
6. If the emission level of the EUT in peak mode was 10 dB lower than the limit specified, then testing could be stopped and the peak values of the EUT would be reported. Otherwise the emissions that did not have 10 dB margin would be re-tested one by one using peak, quasi-peak or average method as specified and then reported in a data sheet.

NOTE :

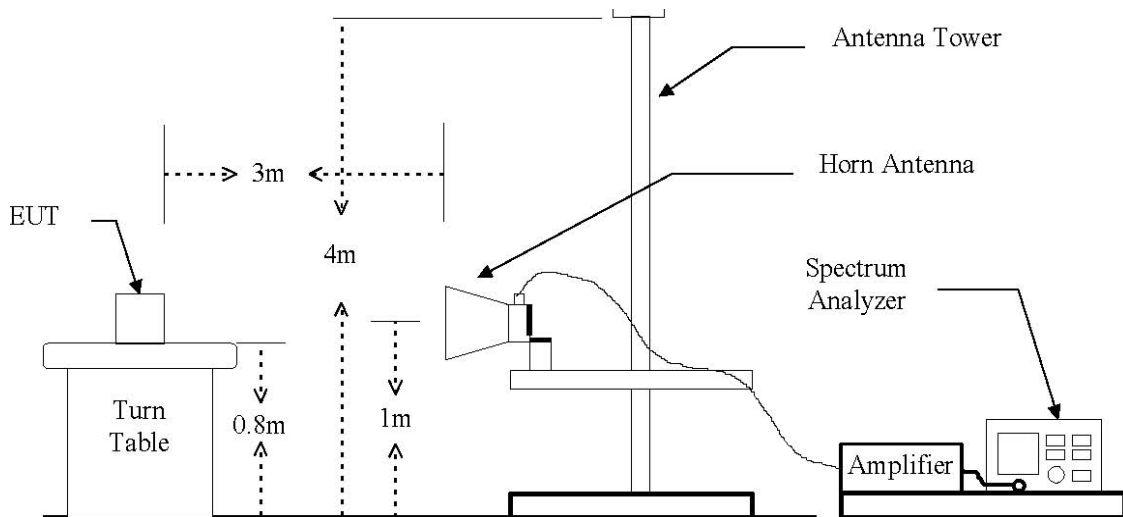
1. The resolution bandwidth and video bandwidth of test receiver/spectrum analyzer is 120 kHz for Peak detection (PK) and Quasi-peak detection (QP) at frequency below 1 GHz.
2. The resolution bandwidth and video bandwidth of test receiver/spectrum analyzer is 1MHz for Peak detection and frequency above 1 GHz.
3. The resolution bandwidth of test receiver/spectrum analyzer is 1 MHz and the video bandwidth is 10 Hz for Average detection (AV) at frequency above 1 GHz.

The results shown in this test report refer only to the sample(s) tested unless otherwise stated. This test report cannot be reproduced, except in full, without prior written permission of the Company.

The diagram below shows the test setup that is utilized to make the measurements for emission from 30 MHz to 40 GHz Emissions.



Frequencies measured below 1 GHz configuration



Frequencies measured above 1 GHz configuration

The results shown in this test report refer only to the sample(s) tested unless otherwise stated. This test report cannot be reproduced, except in full, without prior written permission of the Company.

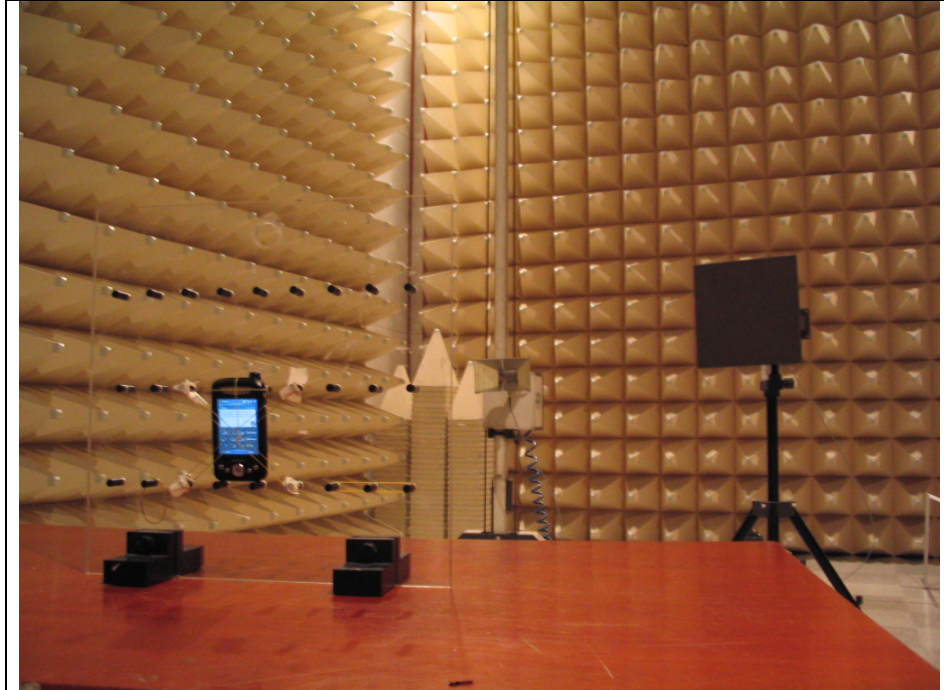
5.3. Test Results

Ambient temperature : 21 °C Relative humidity : 43%

Radiated Emissions			Ant	Correction Factors		Total	FCC Limit	
Frequency (MHz)	Reading (dBuV)	Detect Mode	Pol.	Ant. (dB/m)	Cable (dB)	Actual (dBuV/m)	Limit (dBuV/m)	Margin (dB)
60.00	15.70	P	V	4.40	0.99	21.09	40.00	18.91
120.00	15.40	P	H	9.91	1.40	26.71	43.50	16.79
126.54	17.50	P	V	9.37	1.45	28.31	43.50	15.19
240.26	15.20	P	V	9.12	1.99	26.31	46.00	19.69
322.51	10.40	P	H	11.56	2.37	24.33	46.00	21.67
465.32	15.90	P	H	15.12	2.89	33.91	46.00	12.09
Above 500	Not Detected							

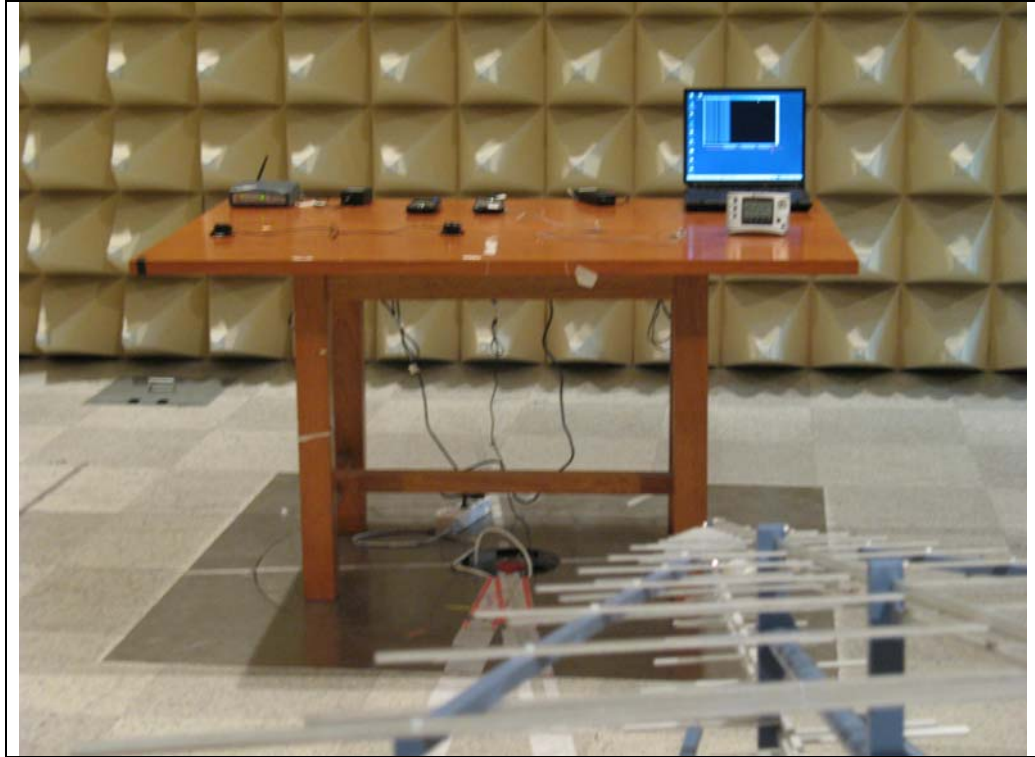
The results shown in this test report refer only to the sample(s) tested unless otherwise stated. This test report cannot be reproduced, except in full, without prior written permission of the Company.

Appendix A. Photo of Radiated Emission Test



The results shown in this test report refer only to the sample(s) tested unless otherwise stated. This test report cannot be reproduced, except in full, without prior written permission of the Company.

Appendix B. Photos of Field Strength Test



The results shown in this test report refer only to the sample(s) tested unless otherwise stated. This test report cannot be reproduced, except in full, without prior written permission of the Company.

Appendix C. Photos of Conducted Power Line Test



The results shown in this test report refer only to the sample(s) tested unless otherwise stated. This test report cannot be reproduced, except in full, without prior written permission of the Company.

Appendix D. Photos of the EUT

Front View of EUT



Rear View of EUT



The results shown in this test report refer only to the sample(s) tested unless otherwise stated. This test report cannot be reproduced, except in full, without prior written permission of the Company.

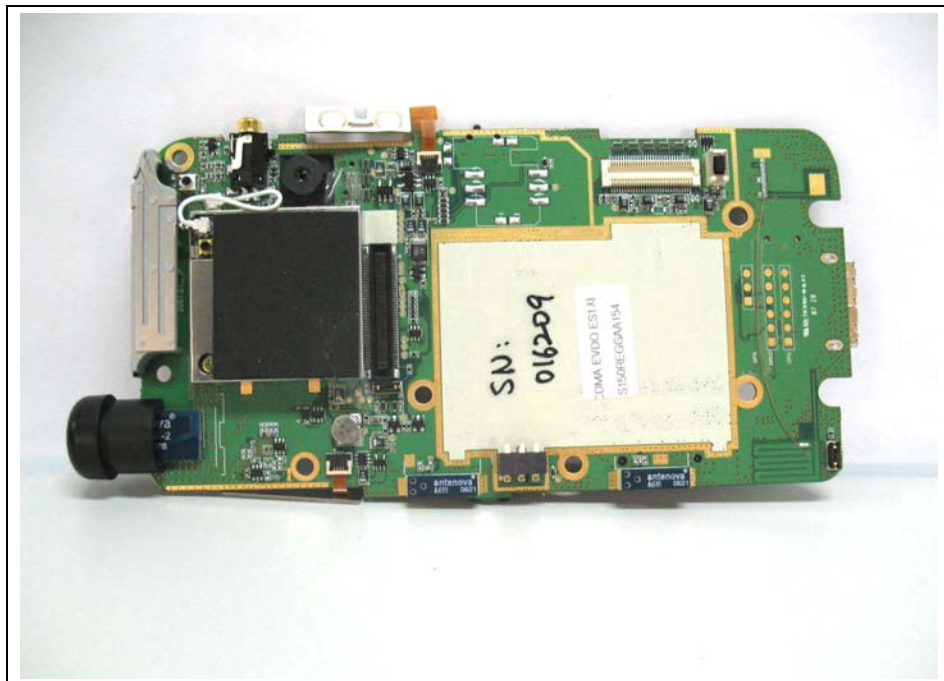
Right View of EUT**Left View of EUT**

The results shown in this test report refer only to the sample(s) tested unless otherwise stated. This test report cannot be reproduced, except in full, without prior written permission of the Company.

Inner of EUT

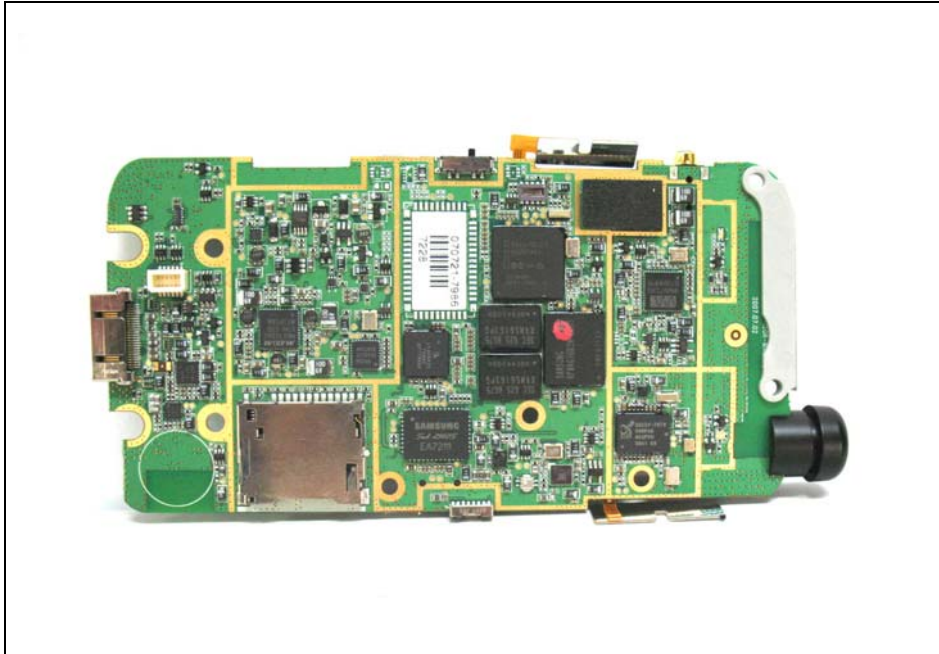


Top View of Main-board

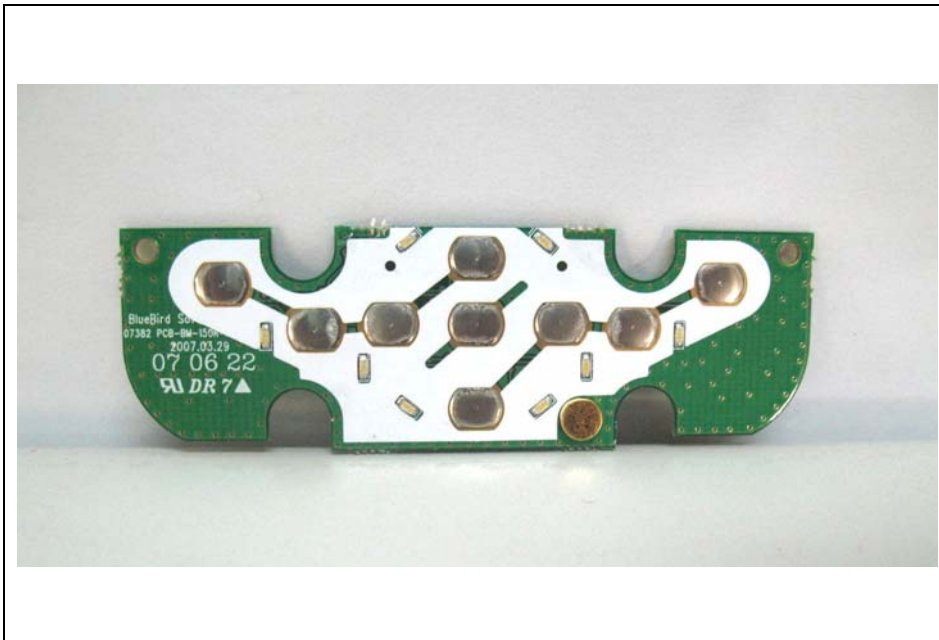


The results shown in this test report refer only to the sample(s) tested unless otherwise stated. This test report cannot be reproduced, except in full, without prior written permission of the Company.

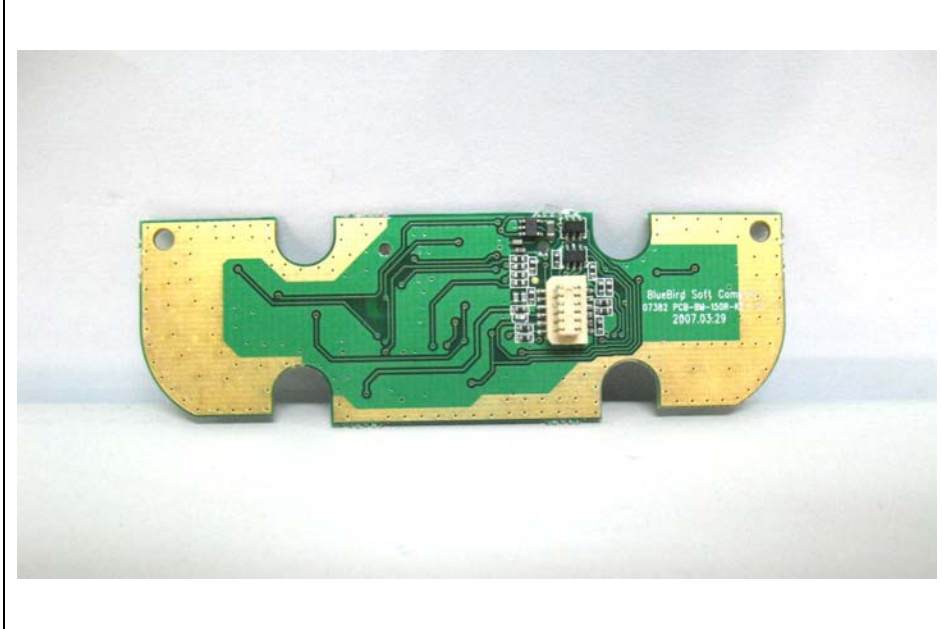
Bottom View of Main-board



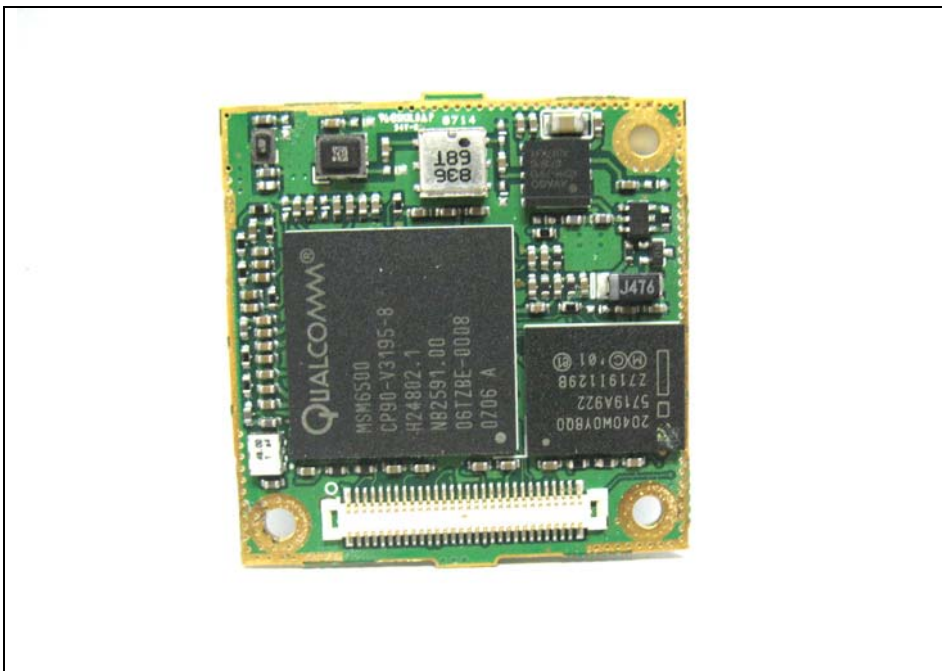
Top View of Keyboard



The results shown in this test report refer only to the sample(s) tested unless otherwise stated. This test report cannot be reproduced, except in full, without prior written permission of the Company.

Bottom View of Keyboard**Top View of LCD**

The results shown in this test report refer only to the sample(s) tested unless otherwise stated. This test report cannot be reproduced, except in full, without prior written permission of the Company.

Bottom View of LCD**Top View of CDMA**

The results shown in this test report refer only to the sample(s) tested unless otherwise stated. This test report cannot be reproduced, except in full, without prior written permission of the Company.

Bottom View of CDMA



The results shown in this test report refer only to the sample(s) tested unless otherwise stated. This test report cannot be reproduced, except in full, without prior written permission of the Company.