

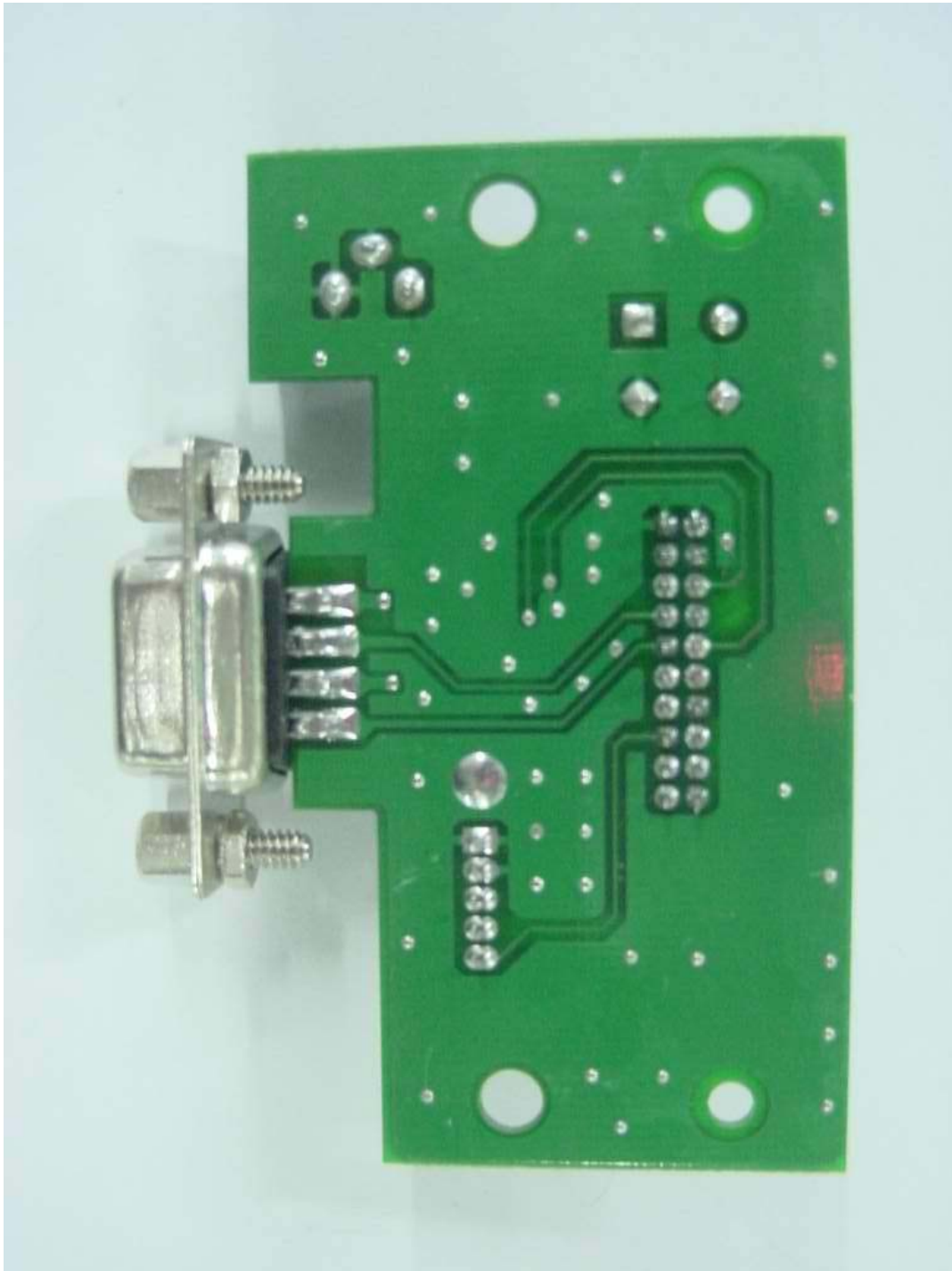


ONETECH

Testing & Evaluation Lab.

FCC ID. : SS4BIP-30X0

File No. : E04DR-017

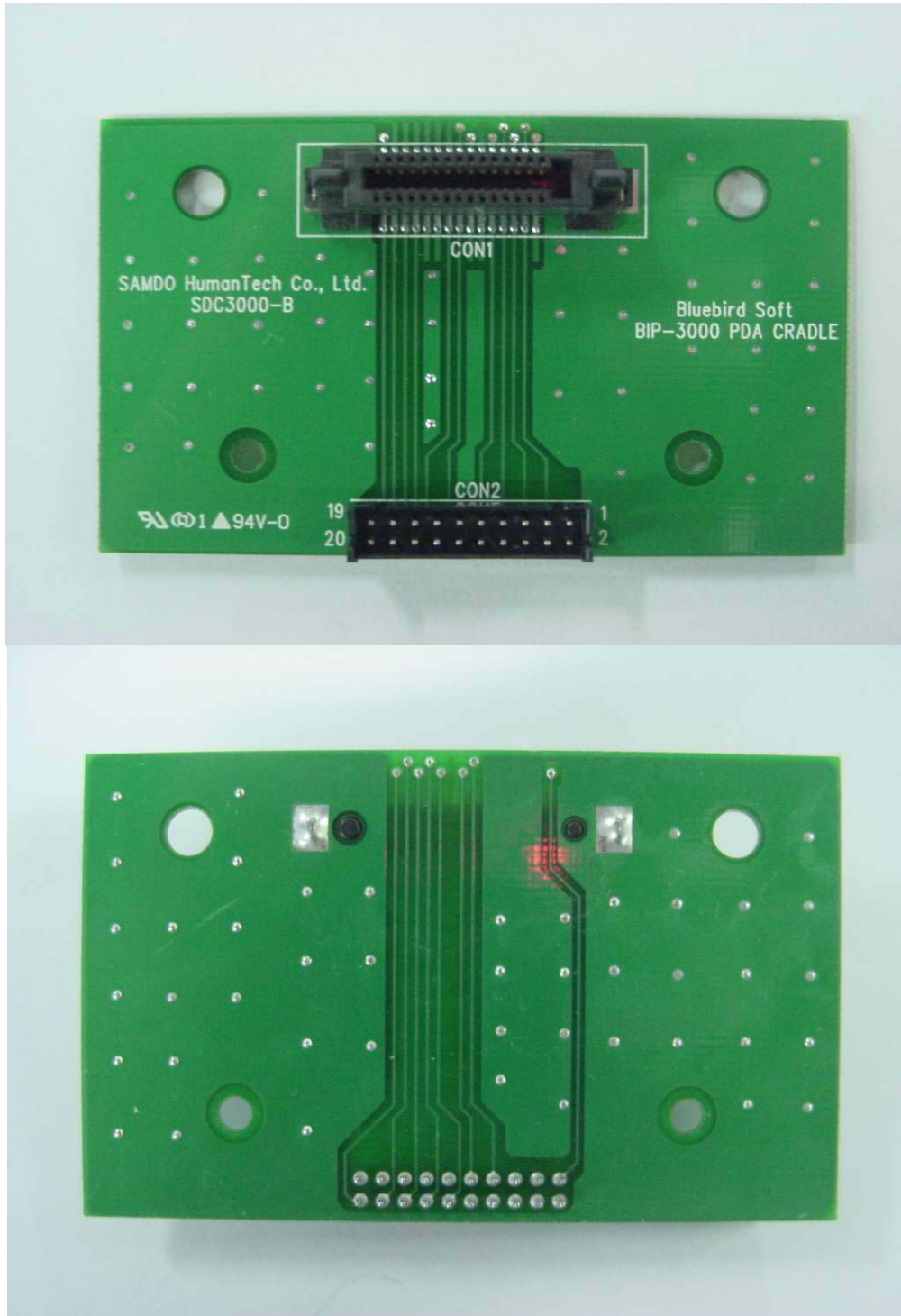


It should not reproduced except in full, written approval of ONETECH.

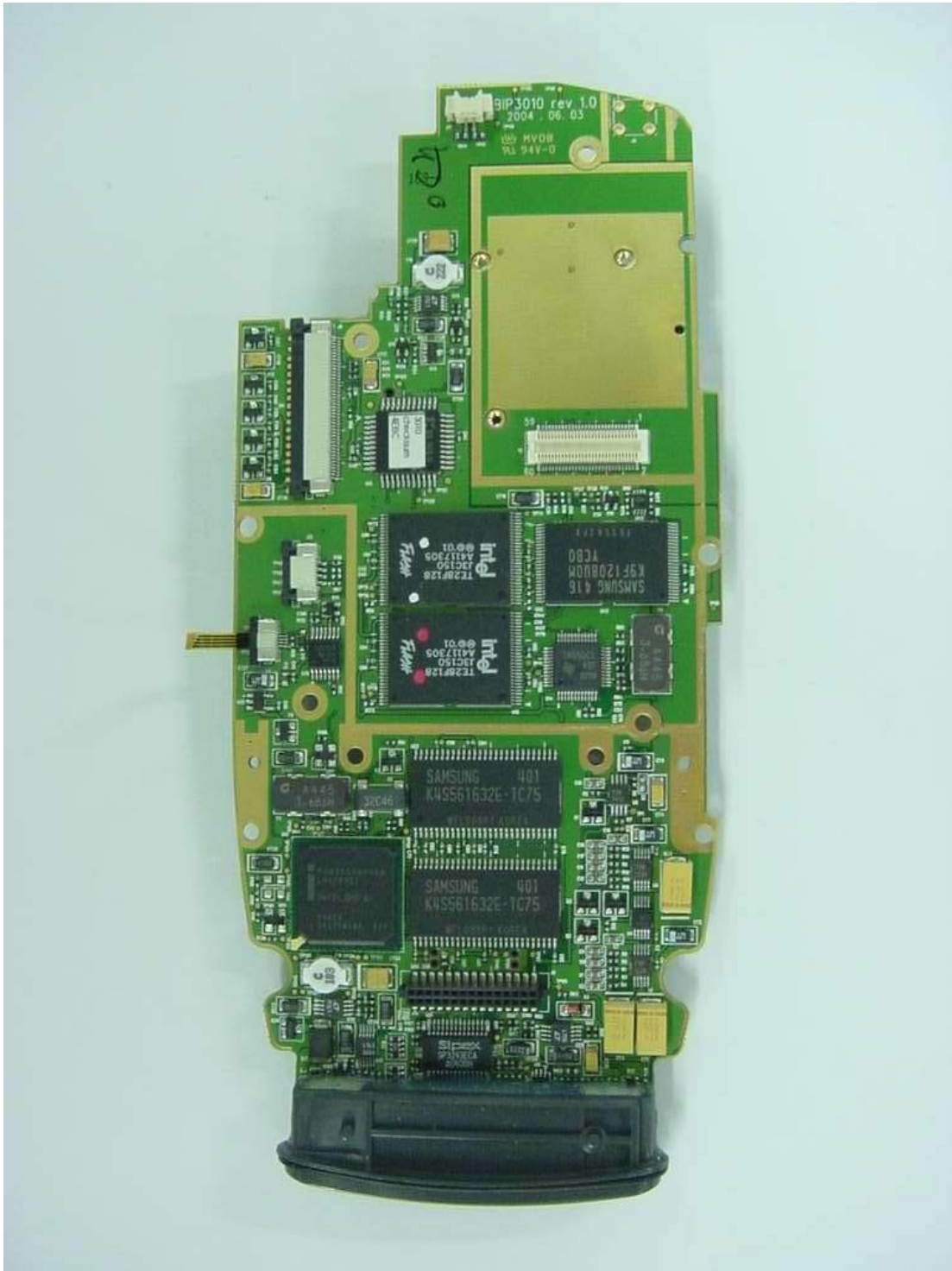
FCC-003 (Rev.0)

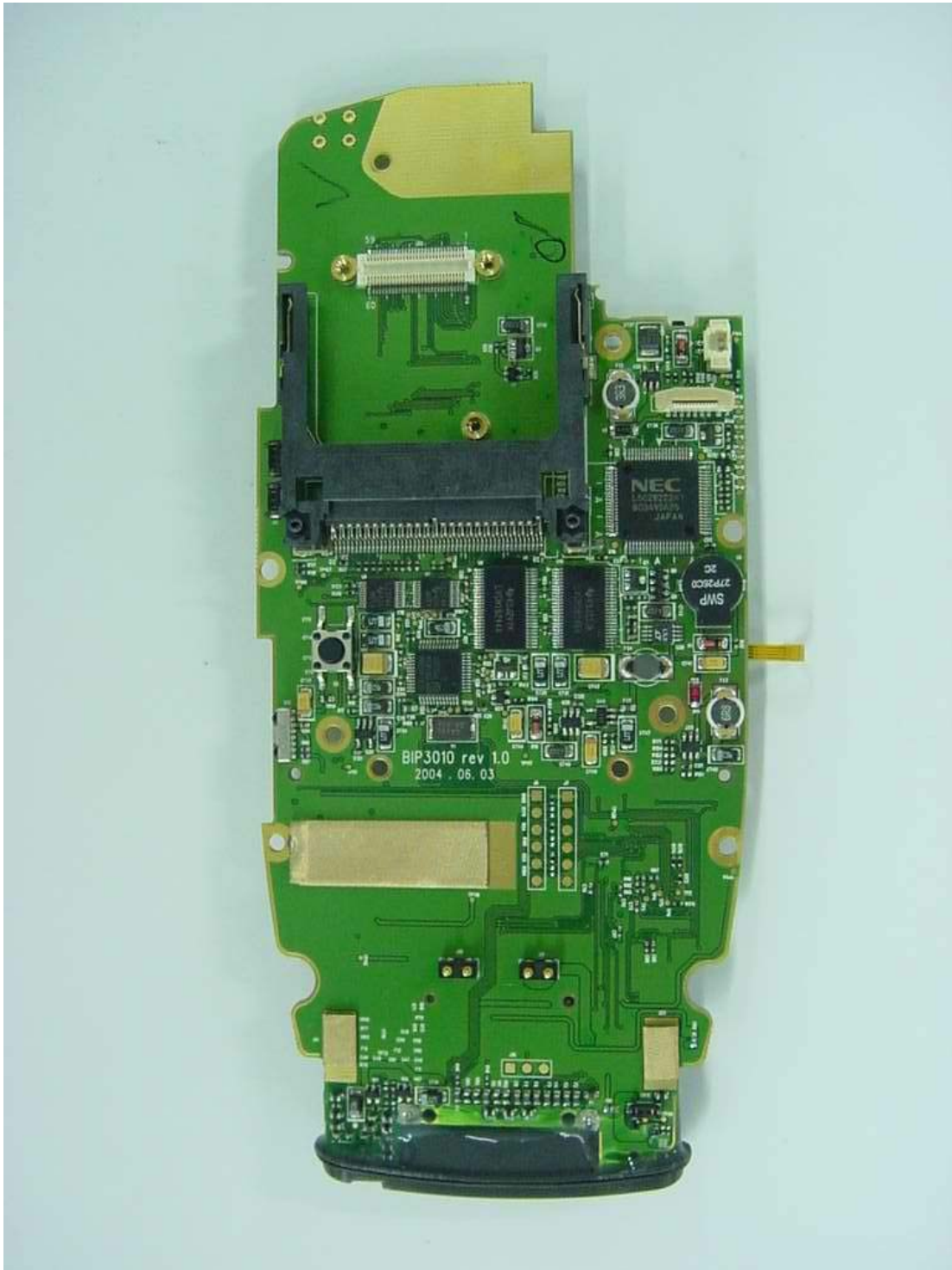
HEAD OFFICE : #505 SK APT. Factory 223-28, Sangdaewon 1 Dong, Jungwon-Gu, Seongnam-City, Gyunggi-Do, 462-121, Korea
(TEL: +82-31-746-8500, FAX: +82-31-746-8700)

EMC Testing Dept : 426-1 Daessangryung-Ri, Chowol-Myun, Gwangju-City, Gyunggi-Do 464-860 Korea. (TEL: +82-31-765-8289, FAX: +82-31-766-2904)





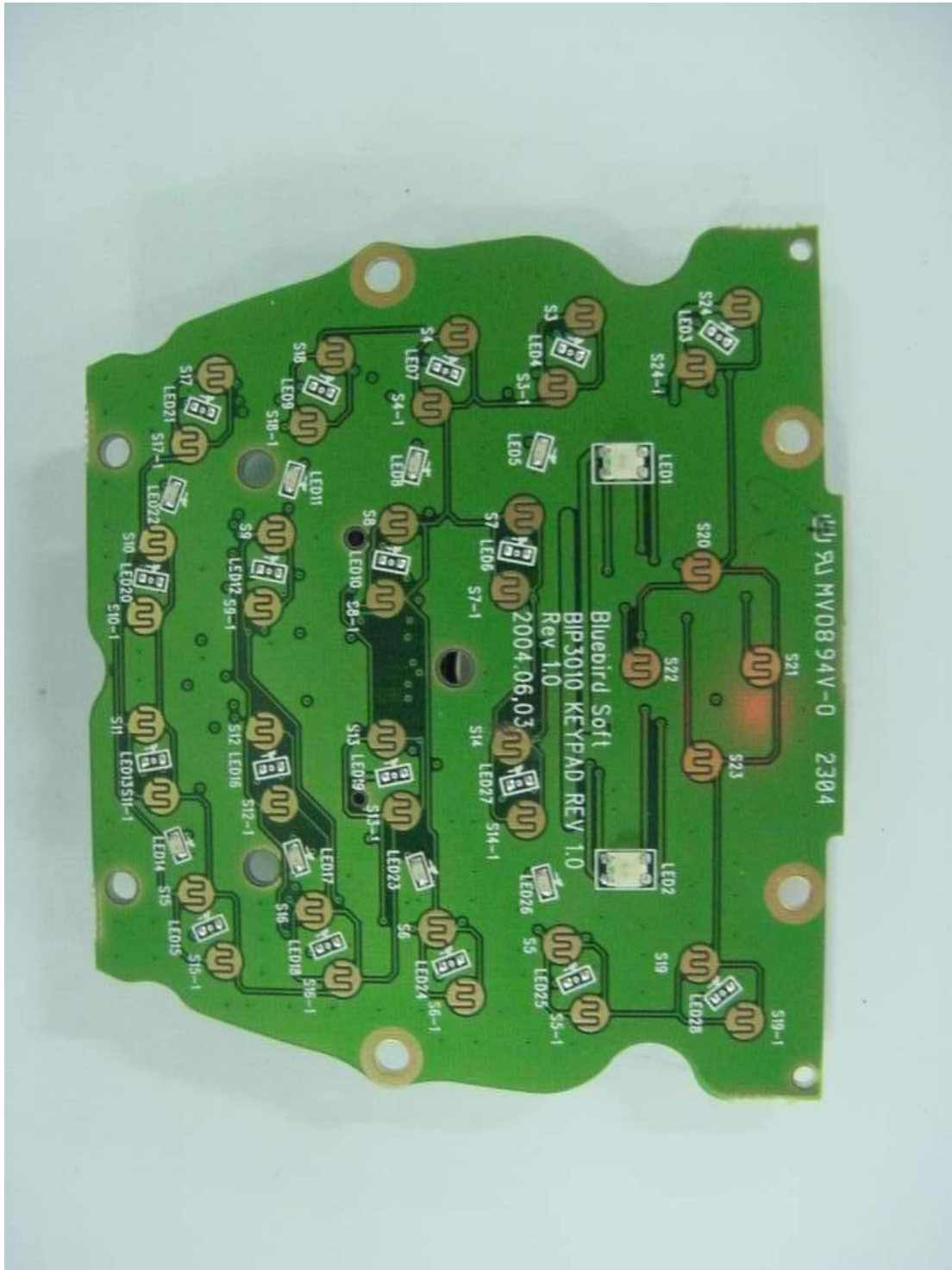










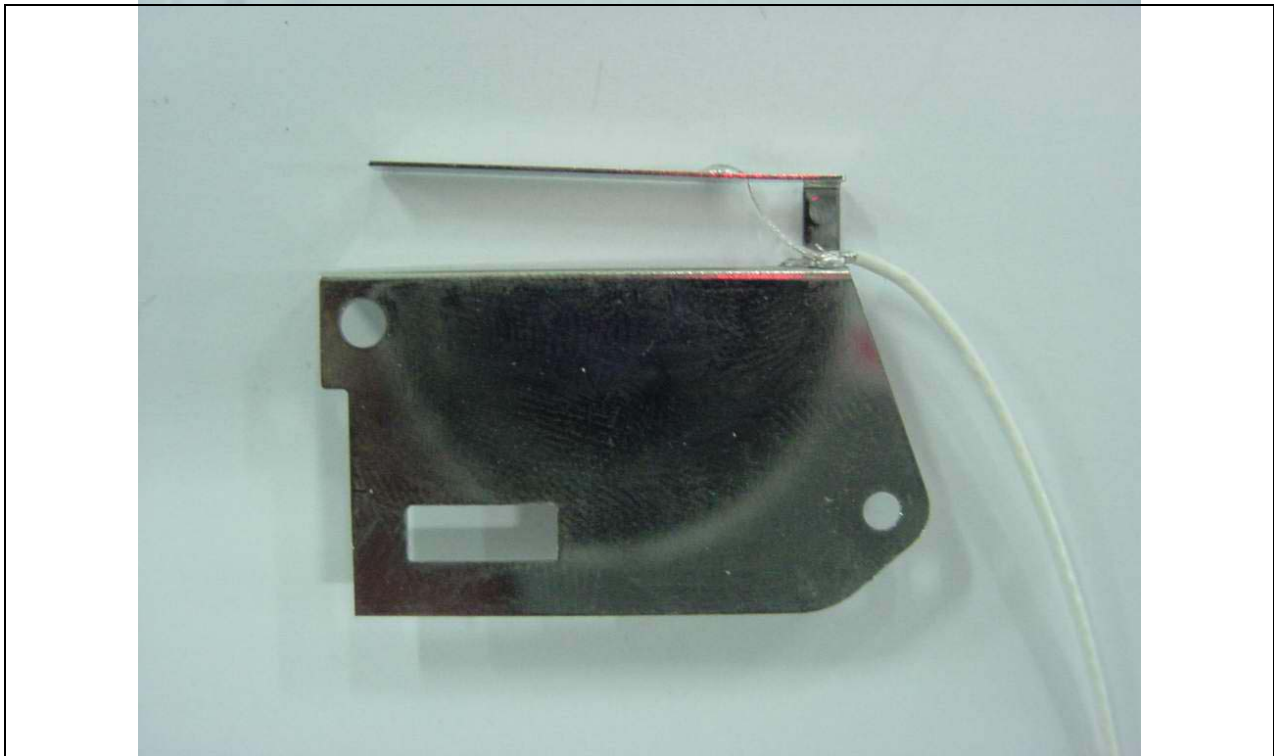
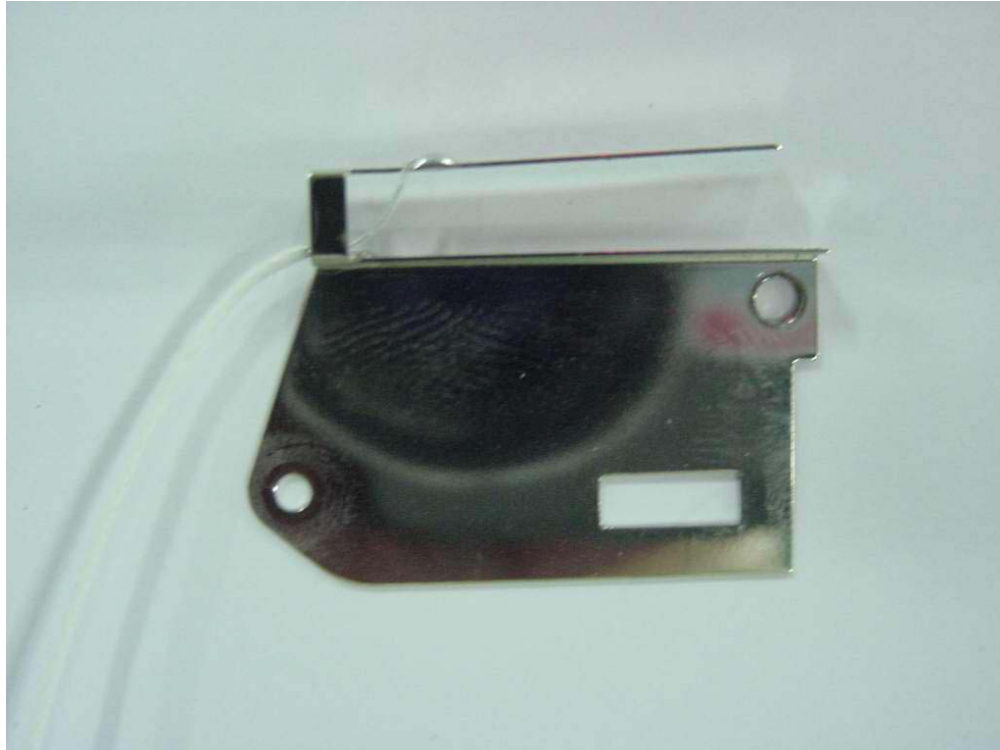


It should not reproduced except in full, written approval of ONETECH.

FCC-003 (Rev.0)

HEAD OFFICE : #505 SK APT. Factory 223-28, Sangdaewon 1 Dong, Jungwon-Gu, Seongnam-City, Gyunggi-Do, 462-121, Korea
(TEL: +82-31-746-8500, FAX: +82-31-746-8700)

EMC Testing Dept : 426-1 Daessangryung-Ri, Chowol-Myun, Gwangju-City, Gyunggi-Do 464-860 Korea. (TEL: +82-31-765-8289, FAX: +82-31-766-2904)



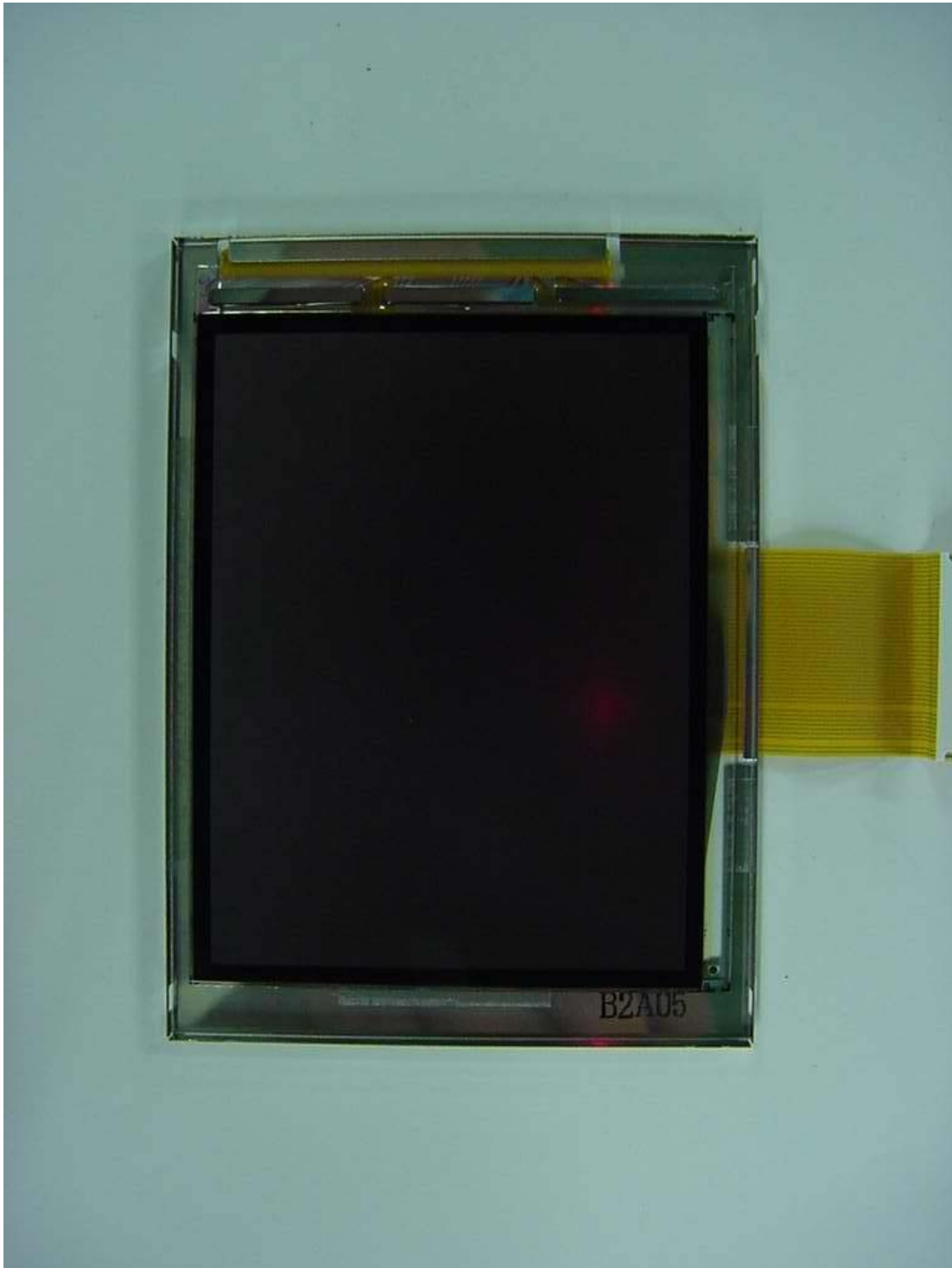


ONETECH

Testing & Evaluation Lab.

FCC ID. : SS4BIP-30X0

File No. : E04DR-017



It should not reproduced except in full, written approval of ONETECH.

FCC-003 (Rev.0)

HEAD OFFICE : #505 SK APT. Factory 223-28, Sangdaewon 1 Dong, Jungwon-Gu, Seongnam-City, Gyunggi-Do, 462-121, Korea
(TEL: +82-31-746-8500, FAX: +82-31-746-8700)

EMC Testing Dept : 426-1 Daessangryung-Ri, Chowol-Myun, Gwangju-City, Gyunggi-Do 464-860 Korea. (TEL: +82-31-765-8289, FAX: +82-31-766-2904)



