

User Manual

Model: BM-150 (WLAN)

Bluebird Soft, Inc.

Safety Warnings and Precautions

Please follow the instructions to properly use the product and avoid accidents in advance

- **Battery Handling Precautions**

-If the batteries are damaged, severely shocked, heated, exposed to moisture or high temperatures, or bored by a gimlet, it may explode

-Keep batteries away from children and pets.

-Never store batteries where they will be exposed to direct sunlight, or subjected to high temperatures in a hot vehicle, near a heat source etc.

-Never attempt to modify the battery compartment on the PDA, never insert anything (other than the recommended battery) into the battery compartment. Unauthorized substitution of the battery could result in fire, electrical shock, or create other hazards. It also can shorten the life span of the battery.

(In this case you can not have free of charge service)

-If the battery has been recharged, you should use only the AC adaptor specified by BBS or standard charger. Using a different AC adaptor may shorten the life span or result in accidents or fire. (in this case you can not have free of charge service)

- **Do not use PDA in explosion areas**

- **If the PDA gets wet, never insert or place the terminal, battery, or charger into or near heating devices, such as heaters or microwave ovens .**

-This may cause production deformation, explosion or fire. (The label's color inside the PDA or battery will fade if immersed in water.)

-Please note that free repair service won't be provided in this condition.

“CAUTION: Exposure to Radio Frequency Radiation.

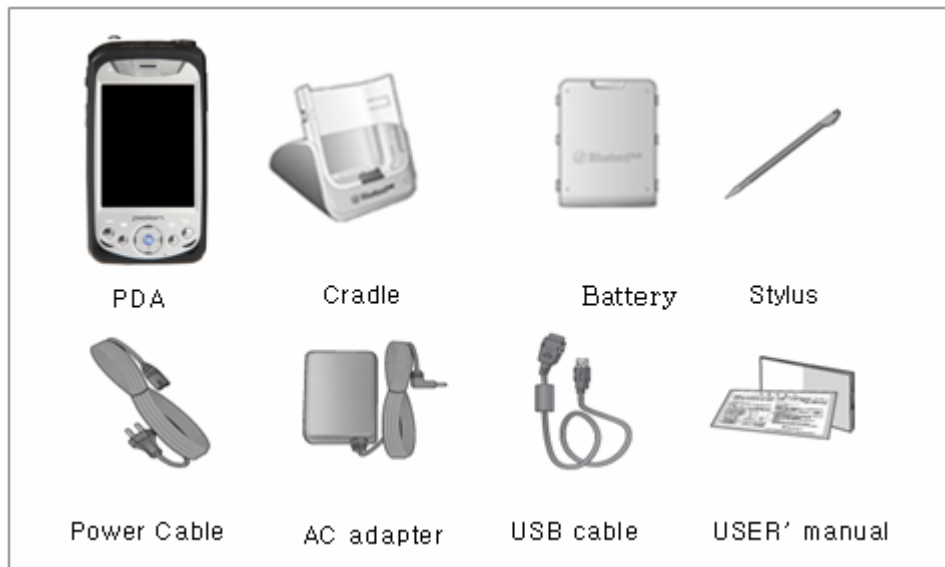
Antenna shall be mounted in such a manner to minimize the potential for human contact during normal operation. The antenna should not be contacted during operation to avoid the possibility of exceeding the FCC radio frequency exposure limit.”

Manual Contents

1. Getting Started.....	4
1.1 Unpacking the box contents.....	4
1.2 Each parts' name and function.....	4
1.2.1 Each part's name.....	4
1.2.2 Function Button.....	5
1.3 Battery usage.....	6
1.3.1 Battery Load/Unload.....	6
1.3.2 Charge with cradle.	6
1.3.3 About battery.....	6
1.3.4 Ramp status during charging.....	7
2. Basic Usage.....	7
2.1 To use PDA function.....	7
2.1.1 power on/off.....	7
2.1.2 To reset.....	7
2.1.3 Hard reset.....	7
2.2 Text input.....	8
2.2.1 English Keyboard input.....	8
3. MP3 Player.....	8
3.1 Listen to Music.....	8
4. Microsoft ActiveSync.....	8
4.1 Installing Microsoft ActiveSync.....	8
4.1.1 Installing Microsoft ActiveSync.....	8
4.1.2 Cautions Regarding Microsoft ActiveSync.....	11

1. Getting Started

1.1 Unpacking the box contents



1.2 Each parts' name and function









1.2.1 Each part's name







1. Antenna: It uses When signal take and send by communication module

2. Charging indicator(LED): Charging RED. Charging Complete: Green
3. Phone Condition indicator: It informs the currency use area and a SMS receiving state
4. Call Button
5. Menu Button
6. Call Close Button
7. Schedule Button
8. Mic:: it uses voice call or record
9. Speaker: it uses when listening to music or voice heard over the phone
10. Ear Jack: the place to insert ear mic or ear converter
11. Top/Bottom moving Button
12. Hold button
13. Reset button
14. External GPS antenna connecting part
15. Battery: Connect/Disconnect Li-Polymer Battery, it take a few weeks from delivering goods out of the warehouse to deliver the user. When you buy the battery first time, you have to charge fully over 48 hours.
16. Camera
17. A reflecting Mirror: It uses when taking a self camera
18. Flash: it uses while taking a dark place
19. Power button
20. Camera Button
21. IrDA: it uses IrDA communications
22. Mini SD Slot: insertion place to Mini SD Card
23. Mini SD Slot: insertion place to Mini SD Card
24. Inserting hole to the stylus pen

1.2.2 Function Button

	Power ON/OFF
	Phone send / receive
	<ul style="list-style-type: none"> - Phone Close - When ending the menu from the condition where the menu is executed
	When using main menu
	When using SMS, Voice message
	When using MP3 Player
	When using phone book
	When using personal menu

	When checking schedule
	<ul style="list-style-type: none"> - Adjust volume during talking - Checking the function by progressively (Same as Navigation up & down key) - Adjust volume from MP3
	Camera menu when use camera
	when set up the PDA locking

1.3 Battery usage

1.3.1 Battery Load/ Unload

Fit battery into bottom of back side groove

Push the arrow way till make a click sound



1.3.2 Charge with cradle.

After connect adaptor with cradle, put battery into cradle of extra battery groove until it make a click sound.

1.3.3 About battery

- Battery consumption may vary depending on carrier service type, temperature, duration of use .
- Battery is consumption product so that allowed time to use will be shorter than when you bought.(Warranty for the battery is about 6 months.)
- Battery will be consumed when you get the phone, and play game, use internet, extra function, and stay in out of service area also consume battery so that stand by time will be shorter dramatically.
- DO NOT put battery near the fire and disassembly.
- Must use authorized Battery and charger. DO NOT connect charge terminal with terminal. Especially, be careful when put in the pocket not to touch terminal with other metal material,

such as key.

1.3.4 Ramp status during charging.

Status of charging ramp	charging		Charged	
	PDA	Cradle	PDA	Cradle
PDA	Red	OFF	Green	OFF
Set cradle PDA	Red	OFF	Green	OFF
Set cradle battery		Red		Green
Cradle PDA, Set battery (PDA Charge Completed)	Green	Red	Green	Green
Cradle PDA, Set battery (Battery Charge Completed)	Red	Orange	Green	Green

- If red ramp of cradle is keep blinking, it means battery didn't fit into cradle properly so that take out battery and put that again. Still blinking, clean the side of connect (metal part) and then charge again. If ramp of PDA is turn off, check the connection
- Battery may not fully charge when you bought, please use it after fully charged.

2. Basic Usage

2.1 To use PDA function

2.1.1 power on/off

Push power button which locate in the right side.

2.1.2 To reset

All current unsaved file may erase and all program may close when you push the reset button fully with stylus pen. It is same as to push the reset button in the desk top.

- ① Push the reset button which located in the middle of the left side of PDA with stylus pen.
- ② PDA will start again.

2.1.3 Hard reset

When do hard reset, it is going to be initial status. When hard reset, all installed program, document and setting environment may erase.

- ① Push [Send] + [OK] button at the same time and push the left side of PDA, hard reset button with stylus pen.

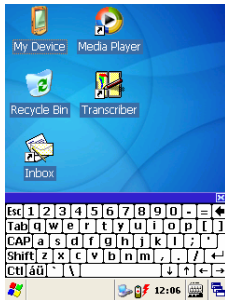


2.2 Text input

2.2.1 English Keyboard input


[Keyboard input]

- ① Select Keyboard input screen
- ② Select Language and then type it..



3. MP3 Player

3.1 Listen to Music

- ① Press , then **MR**.
- ② Window Media Player will be played.

4. Microsoft ActiveSync

This chapter will explain how to install Microsoft ActiveSync on your computer and how to set partnership between your devices. ActiveSync is installed in your device beforehand, therefore, reinstallation is not necessary.

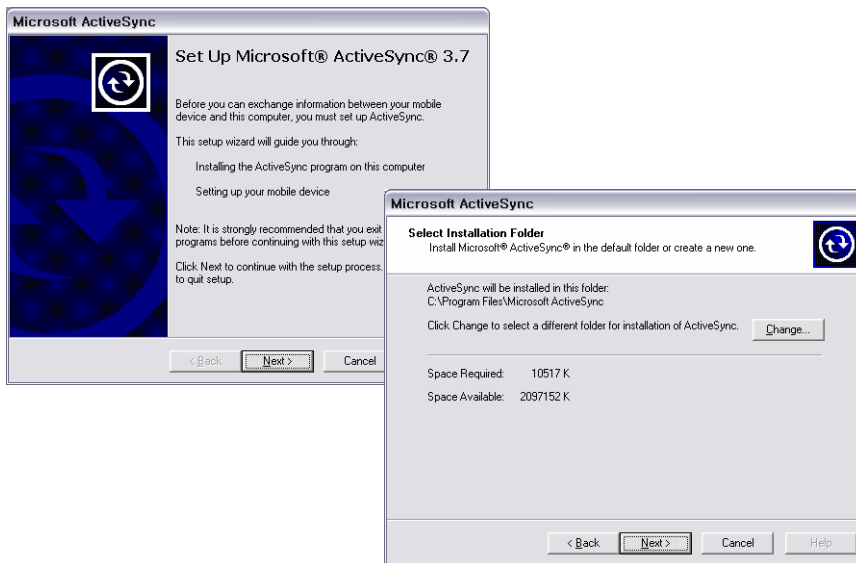
This chapter will help you to connect your device physically to your computer that Microsoft ActiveSync is installed, and to send and receive files.

4.1 Installing Microsoft ActiveSync

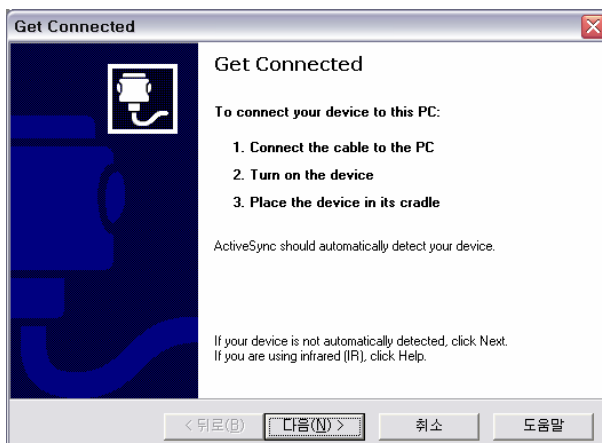
4.1.1 Installing Microsoft ActiveSync

- 1) Download ActiveSync 3.7 from <http://www.microsoft.co.kr> and run msasync.exe file.

Press Next when the box below appears.



- 2) When the box above appears, select a folder to install the program and press Next.
- 3) If your device is not connected to your computer after installation, [Get Connected] configuration window will appear. Or if your device is connected, it goes to next step automatically.



4) To connect BM-150 to your desktop

- Connect the power supply and connect the USB cable to your desktop.
- Put BM-150 in the USB cradle.

a. When BM-150 is connected to your desktop for the first time, 'Add Hardware Wizard' opens in your PC.

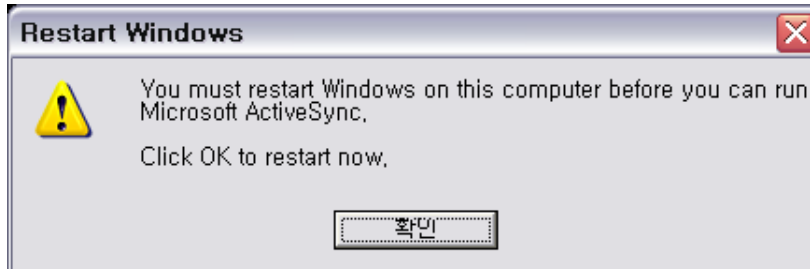
If Microsoft ActiveSync 3.8 version was installed beforehand, additional driver is unnecessary.

b. According to PC configuration, PC restart might be requested. If necessary please

restart your computer.

c . The connection between your PC and the device can fail if it is the first time.

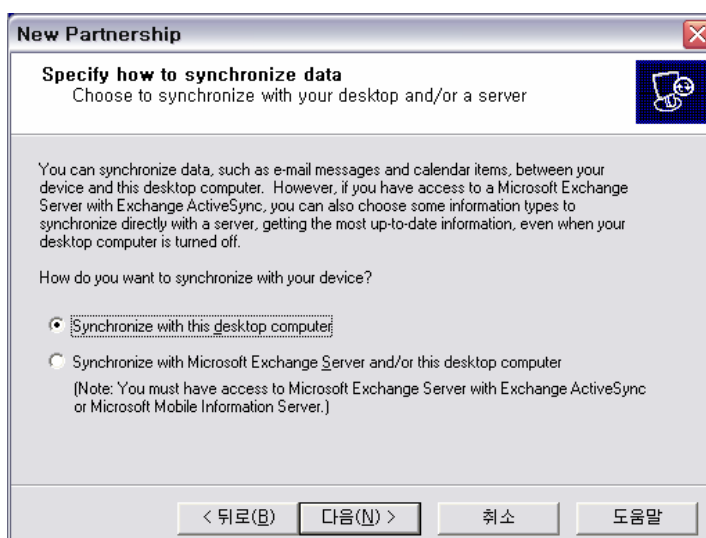
If it fails, click OK button and try again.



6) When connected, the box below appears. Select 'Yes' and press next. If it is temporary connection, select 'No.'



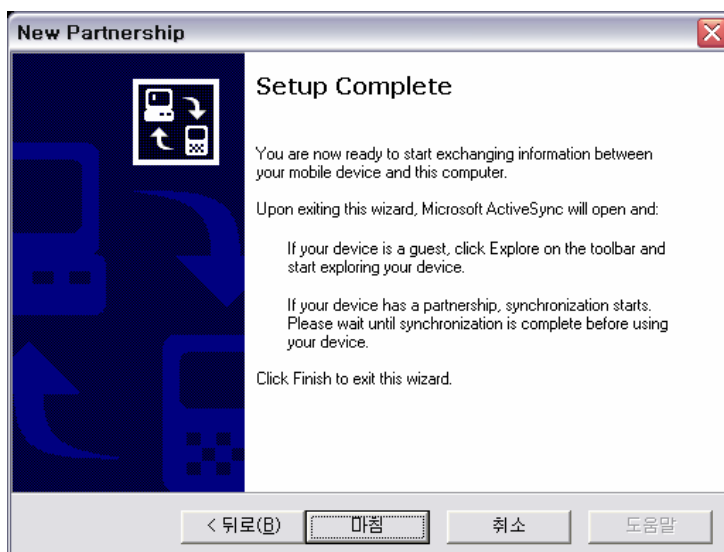
7) When 'Standard Partnership' is selected, the box below appears.



- 8) To synchronize your device, choose an option and press Next. Then the box below will appear.



- 9) Select programs to synchronize and press Next, then the box below will appear.



- 10) "Press Finish to complete the setup wizard.

4.1.2 Cautions Regarding Microsoft ActiveSync

1) Getting Started

- a. Uninstall previous version of ActiveSync program.
- b. Install the latest version of Active Sync3.7.1. When the 'Get Connected' dialogue appears during installation, press 'Cancel.'
- c. After setup is completed, click 'Connection Settings' menu under 'File' in the ActiveSync menu, and a dialogue opens, then select 'Allow USB connection with this desktop computer' and check 'Status: USB is available' appears below. If 'Get Connected'

dialogue shows up, it is because error-occurred driver still remains. Open 'Control Panel' → System → Device Manager → Windows CE USB Devices → uninstall the device with an error.

- 2) When 'Unknown Device' box shows up after your PC detects USB device
 - a. This happens when power supply is connected while your device is put in the cradle.
 - b. Take the device out of the cradle and put it in again.
- 3). 'Connecting' status lasts for long in the ActiveSync
 - a. Take the device out of the cradle and cut connection.
 - b. Active Sync menu → File → Connection Settings → Allow USB connection with this desktop computer (undo checkbox (press OK.
 - c. Go to 'Connection Settings' again (Allow USB connection with this desktop computer (fill up checkbox (press OK.
 - d. Put the device in the cradle and ActiveSync works.
- 4) Fail to connect after several trials, and 'Unknown Device' icon appears in the PC tray
 - a. Sometimes connection fails because of the wrong condition of USB host in your PC.
 - b. Take the device out of the cradle, restart computer, then put the device in the cradle. It will work well again.
- 5) When the device doesn't work after main battery is unplugged and connected again

In order not to have this problem, please press 'Power-off' button or press 'Turn-off' in the 'Start' menu with a stylus pen before main battery is unplugged, therefore Windows CE can perform 'System Shutdown' process.

In case the main battery is unplugged and the device doesn't work, press # button, 'Enter' button, and 'Reset' button behind at the same time.

However, this manipulation will cause data loss in the 'Present Memory' if the data is not saved.

FCC Information

This device complies with Part 15 of the FCC Rules. Operation is subject to the following two conditions:

- (1) This Device may not cause harmful interface, and
- (2) This device must accept any interference received, including interference that may cause undesired operation.

Note: This equipment has been tested and found to comply with the limits for CLASS B digital device, pursuant to Part 15 of FCC Rules. These limits are designed to provide reasonable protection against harmful interference when the equipment is operated in a commercial environment. This equipment generates, uses and can radiate radio frequency energy and, if not installed and used in accordance with the instructions, may cause harmful interference to radio communications. However, there is no guarantee that interference will not occur in a particular installation. If this equipment does cause harmful interference to radio or television reception, which can be determined by turning the equipment off and on, the user is encouraged to try correct the interference by one or more of the following measures:

- 1.1. Reorient or relocate the receiving antenna.
- 1.2. Increase the separation between the equipment and receiver.
- 1.3. Connect the equipment into an outlet on a circuit different from that to which receiver is connected.
- 1.4. Consult the dealer or experienced radio/TV technician for help.

WARNING

Changes or modifications not expressly approved by the manufacturer could void the user's authority to operate the equipment.