

pidion

Cordless Barcode Scanner

BI-300



Barcode Bluetooth PC-Sync

Series Manual

Please read the following warnings before using the product.

Shapes and colors of the images shown in this manual may differ from the actual products.

Contents of the manuals may differ based on the software version of products or conditions of the wireless provider.

1. Laser Warning



2. Battery-Related

Cordless Barcode Scanner **BI-300**



Battery Precautions

- Do not subject the battery to shock such as dropping, and do not disassemble. (Doing so can result in malfunction, shortening of battery life, and/or danger from overheating.)
- Do not place the battery near any source of heat such as a heater, microwave oven, etc. (Doing so can result in explosion.)
- Only use authentic authorized batteries and chargers. (Neglecting to do so can result in explosion and/or fire, as well as shortening of battery life.)
- Do not allow the battery terminal (metal portion) to come into contact with any electricity-conducting object such as necklaces, coins, etc. (Doing so can result in overheating of the battery and object in contact, thus posing the risk of fire.)
- Do not leave the battery on a car dashboard under direct sunlight or in a sealed high-temperature area. Store indoors under room temperature. (Neglecting to follow this instruction can result in explosion.)
- Store in a place away from children and/or pets to prevent placing in mouth and/or biting. (Neglecting to do so can result in product damage and/or bodily injury.)
- Due to the nature of the battery, usage time may shorten even after fully charged due to low voltage.

Battery	Operation Temperature : 0°C to 40°C
----------------	-------------------------------------

CAUTION

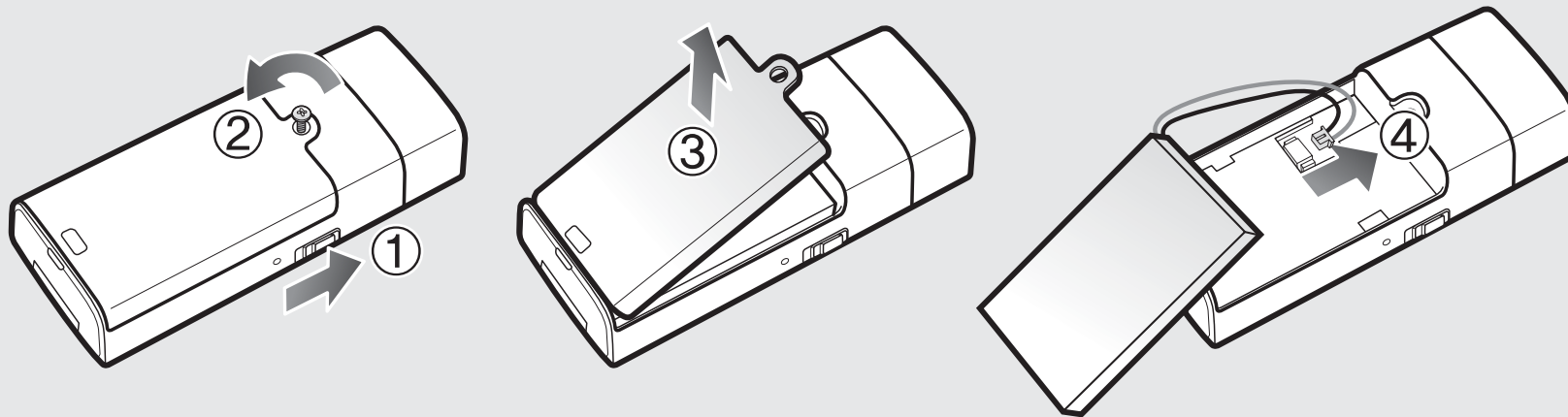
RISK OF EXPLOSION IF BATTERY IS REPLACED
BY AN INCORRECT TYPE.
DISPOSE OF USED BATTERIES ACCORDING
TO THE INSTRUCTIONS

2. Battery-Related

1 Battery Replacement

[Battery Removal]

- ① Turn the BI-300 power off.
- ② Turn the screw on the battery cover counter-clockwise to loosen, then remove.
- ③ Lift off the battery cover in the direction of the arrow.
- ④ Turn the screw clockwise to fasten firmly.



2 Battery Charging

Connect the charger to the 24pin connector jack at the bottom of the BI-300 and charge.



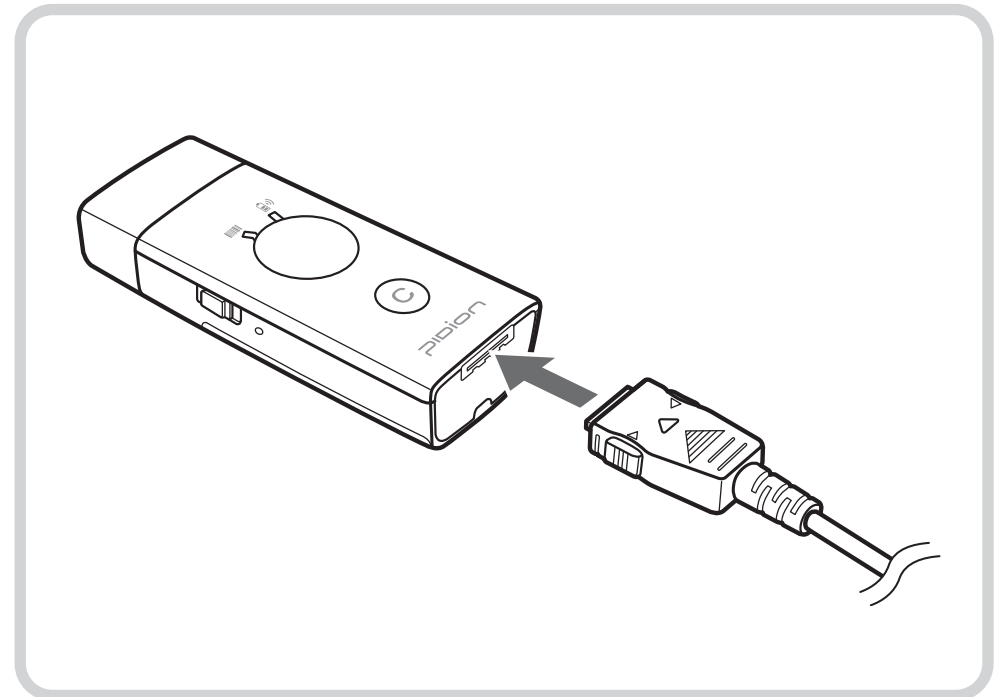
TIP

When the Charge Bluetooth lamp turns orange and blinks slowly and continuously, battery power is running low, and the battery should be charged. During charging, the Charge Bluetooth lamp blinks green and stays lit in green when charging is complete. (Charging Time: Approx. 2 hours 30 minutes)



CAUTION

Make sure to use authentic products as the battery may sustain damage and/or provide reduced performance if the authorized charging method and/or authentic charger are not used.



3. Usage

1 Power On/Off

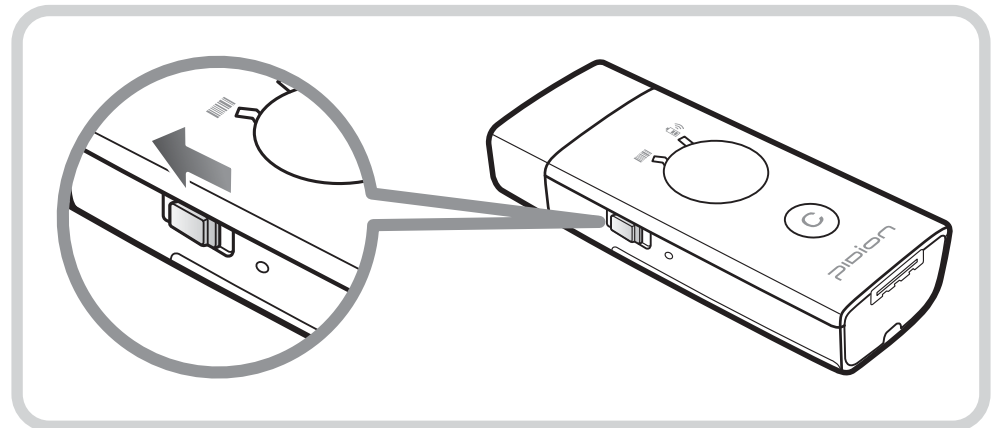
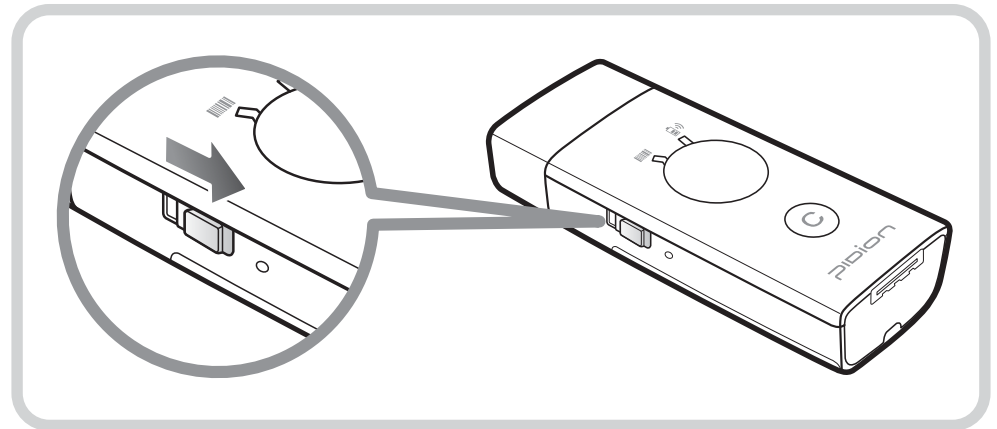
1. Turning Power On

Push the power button on the left side of the BI-300 to the right as shown.



TIP

Wait before using product as the BI-300 booting time is approximately one minute.



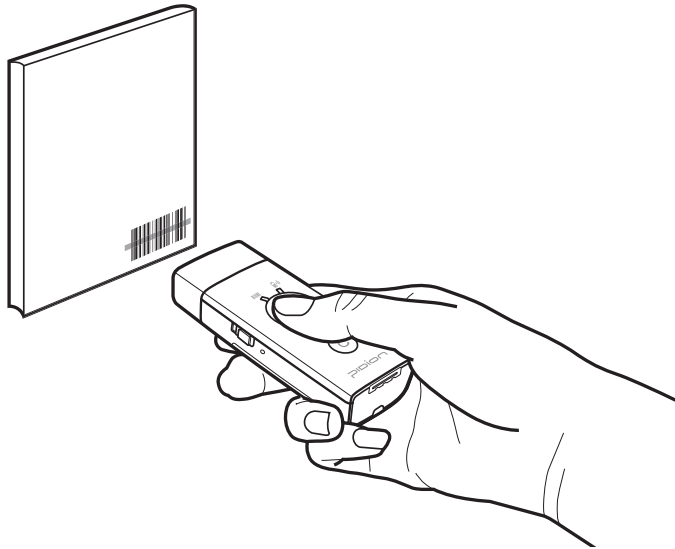
2. Turning Power Off

Push the power button to the left as shown.

2 Barcode Scan Function

1. Scanning

Point the barcode toward the scanner exit window as shown, and press the Scan button to perform reading.



WARNING

Do not place the eyes of a person and/or pet near the scanner exit window. Doing so can result in retinal damage and/or reduced vision.



TIP

Barcodes can be read only when oriented in the appropriate position as illustrated below.



2. Deletion

To delete a scanned barcode, lightly press the cancel button once.

3. Delete All

Pressing and holding the cancel button for longer than six seconds deletes all stored barcode data.

Cancel button



4. Features

Division		Specification
Physical	Size	36 x 85 x 19 mm
	Weight	including standard battery: 54g / excluding battery:38g
Functionality	CPU	SAM SUNG
	OS	Linux
	RAM	16MB
	ROM	32MB
	Interface	24pin Connector / RS-232C, USB Client, Keyboard Wedge, IBM 468X/9X, Synapse and Undecoded
	Wireless	Bluetooth Class 1, distance 30~100m
Electrical	Battery	710mAh Li-Ion Battery
	Charging time	2~3 hours
	Bluetooth	Frequency: 2,402MHz ~ 2,480MHz / Power: 20uW / Type of emission: F1D Modulation Method: GFSK / Communication mode: semi-duplex operation Number of channels: 79 / Antenna Type: Chip ANT Antenna Benefit: 1.1dBi / No Additional Active circuit
Environmental	Temperature in operation	-10 ~ +50°C
	Temperature in storage	-40 ~ +60°C
	Humidity	0 ~ 95% (non-condensing)
	Protection	IP30
Optical	Decode Capability	UPC, EAN 13, CODE 39, Codabar, Interleaved 2 of 5, Code 93, Code 128, PDF417, MSI Plessey, Code 11
	Barcode Alarm & Notifications	Choosing Sound, Vibration or LED



Customers Service Center

Hours

Mon.-Fri. : 9 A.M. ~ 6 P.M.

(GMT Time: +9 Hours)

We are not open on Saturday,
Sundays and National Holidays.

Phone : +82-2-1588-1380

Address : Customers Service Center
2nd Floor, 558-8, Sinsa-dong,
Gangnam-gu, Seoul, Korea

Customers Service Center Phone : +82-2-1588-1380

Bluebird constantly strives to bring utmost satisfaction to all our customers.

1. FCC Warning

This device complies with Part 15 of the FCC Rules. Operation is subject to the following two conditions:

- (1) This device may not cause harmful interference.
- (2) This device must accept any interference received, including interference that may cause undesired operation.

15.105 Federal Communications Commission (FCC) Requirements, Part 15

This equipment has been tested and found to comply with the limits for a class B digital device, pursuant to part 15 of the FCC Rules. These limits are designed to provide reasonable protection against harmful interference in a residential installation.

This equipment generates, uses and can radiate radio frequency energy and, if not installed and used in accordance with the instructions, may cause harmful interference to radio communications. However, there is no guarantee that interference will not occur in a particular installation. If this equipment does cause harmful interference to radio or television reception, which can be determined by turning the equipment off and on, the user is encouraged to try to correct the interference by one or more of the following measures:

- Reorient or relocate the receiving antenna.**
- Increase the separation between the equipment and receiver.**
- Connect the equipment into an outlet on a circuit different from that to which the receiver is connected.**
- Consult the dealer or an experienced radio/TV technician for help.**

1. FCC Warning

Any changes or modifications (including the antennas) made to this device that are not expressly approved by the manufacturer may void the user's authority to operate the equipment.

FCC RF Radiation Exposure Statement: This equipment complies with FCC RF radiation exposure limits set forth for an uncontrolled environment. This device and its antenna must not be co-located or operating in conjunction with any other antenna or transmitter.