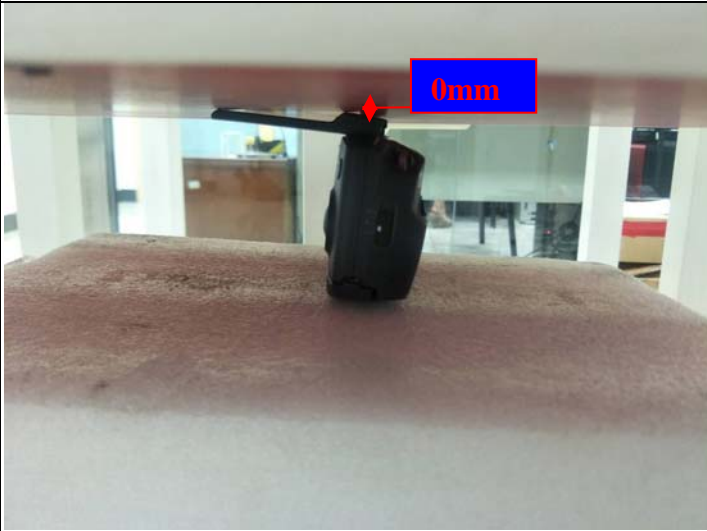


Setup Photos

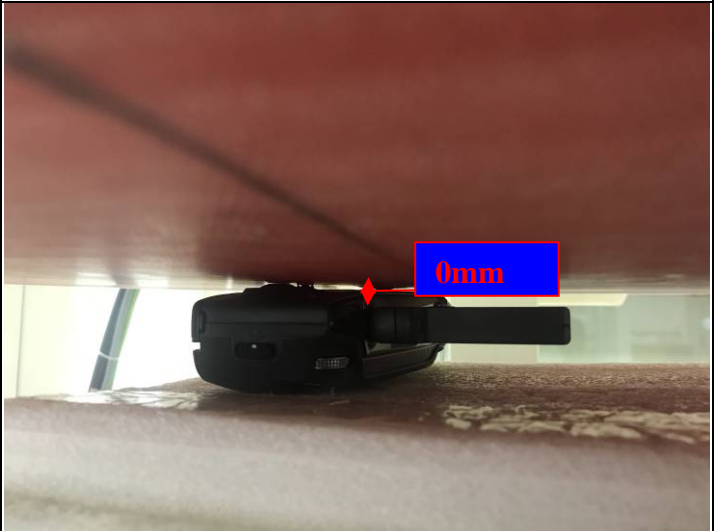
Hand-held mode

Front



EUT Setup Configuration 1

Top



EUT Setup Configuration 2

Tip



EUT Setup Configuration 3

Bottom



EUT Setup Configuration 4

Left



EUT Setup Configuration 5

Rear



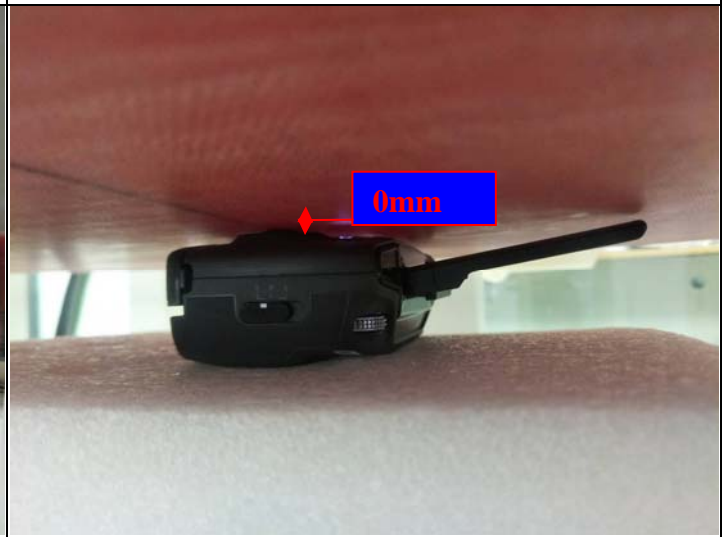
EUT Setup Configuration 6

Right



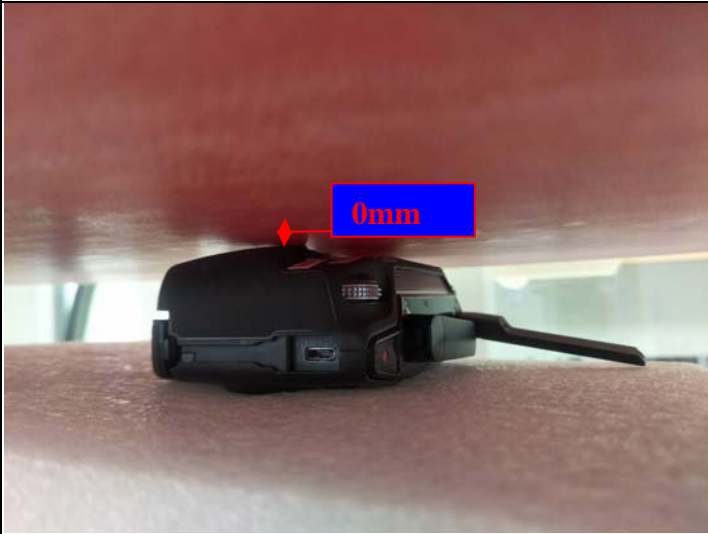
EUT Setup Configuration 7

Top to ANT H



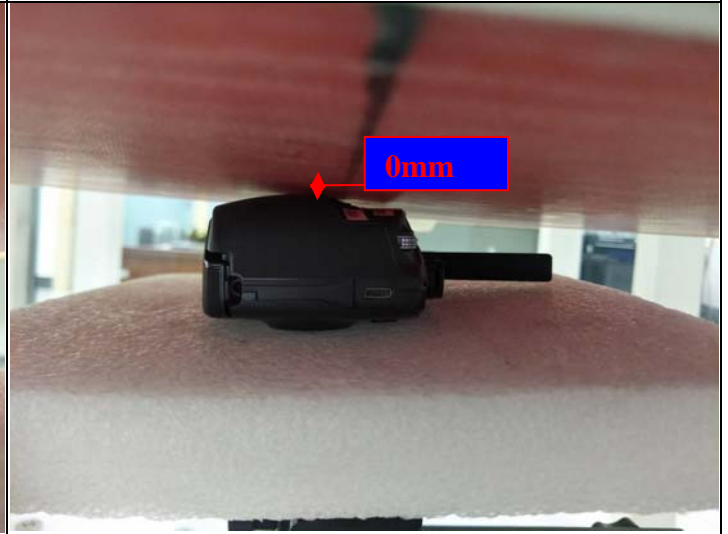
EUT Setup Configuration 8

Bottom to ANT H



EUT Setup Configuration 9

Bottom to ANT V



EUT Setup Configuration 10