

1. WM260 UAV WIFI ANT0 L

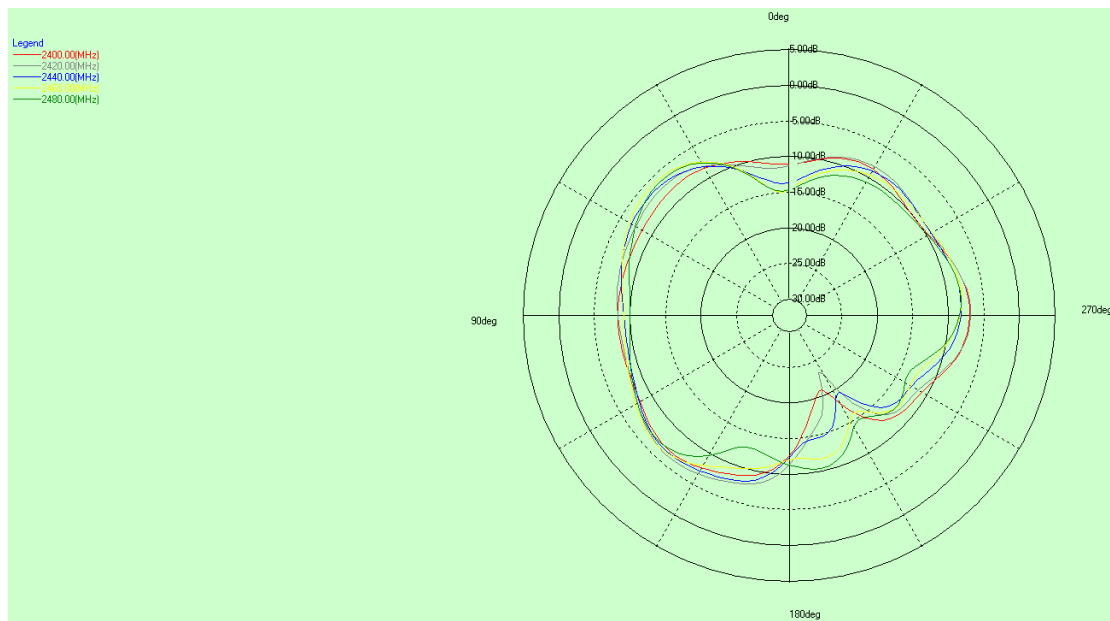
1.1 Basic Specifications

No.	Specification	Descriptions	Notes	
1	Antenna Name	WM260 UAV WIFI ANT0		
2	Brand	DJI		
3	Operation Frequency	2.4~2.483GHz; 5.725~5.85GHz		
4	Connector Type	4代 IPEX		
5	Impedance	50ohm		
6	Gain	-2.5 dBi@2.4~2.483GHz 2.0 dBi@5.725~5.85GHz		
7	Efficiency	$\geq 15\%$		
8	VSWR	≤ 3.0		
9	Polarization type	Linear		
10	3dB Beamwidth	Omnidirectional horizontal		
11	Weight			

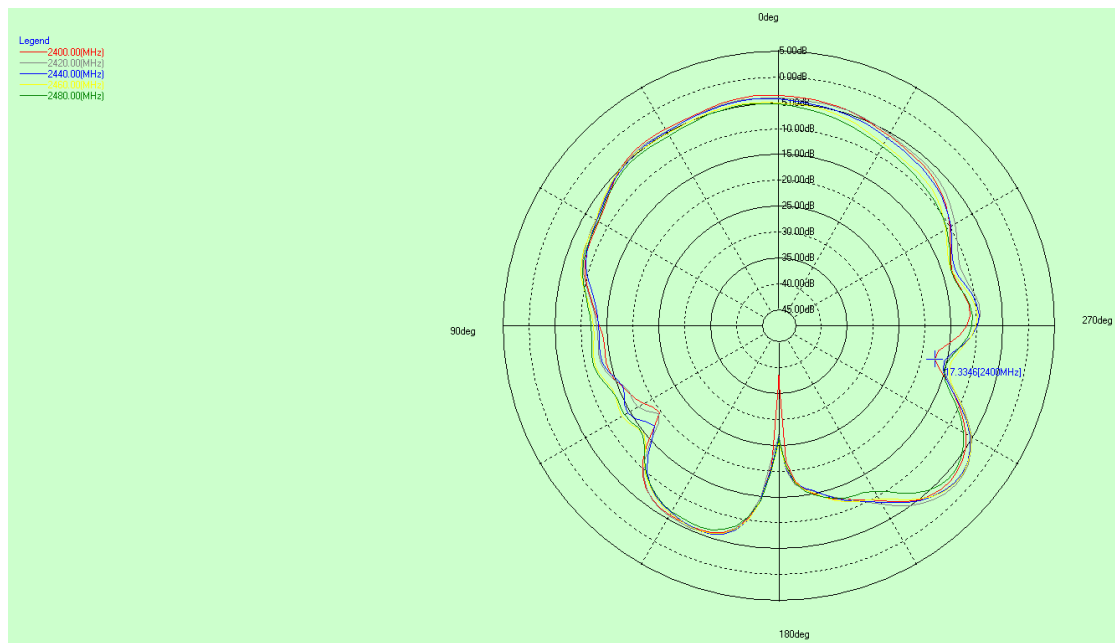
1.2 radiation pattern

Frequency (MHz)	Efficiency	Gain(dB)
2400	17%	-2.52
2420	18%	-2.77
2440	19%	-2.61
2460	18%	-2.50
2480	18%	-2.64
5700	30%	1.79
5750	31%	2.00
5800	32%	1.97
5850	31%	1.87

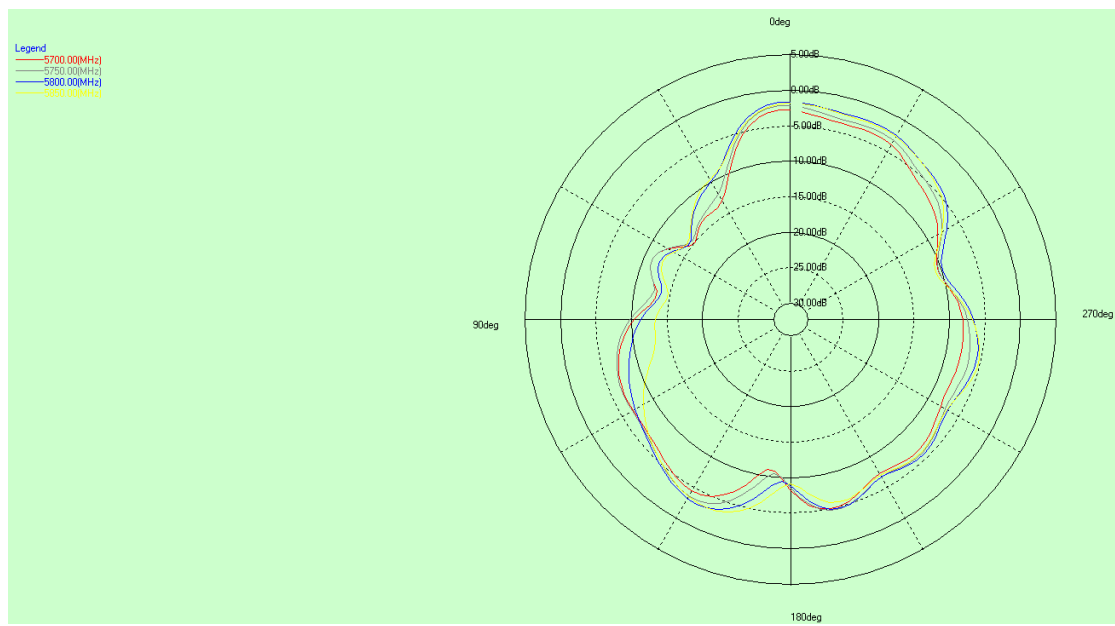
2.4 水平面



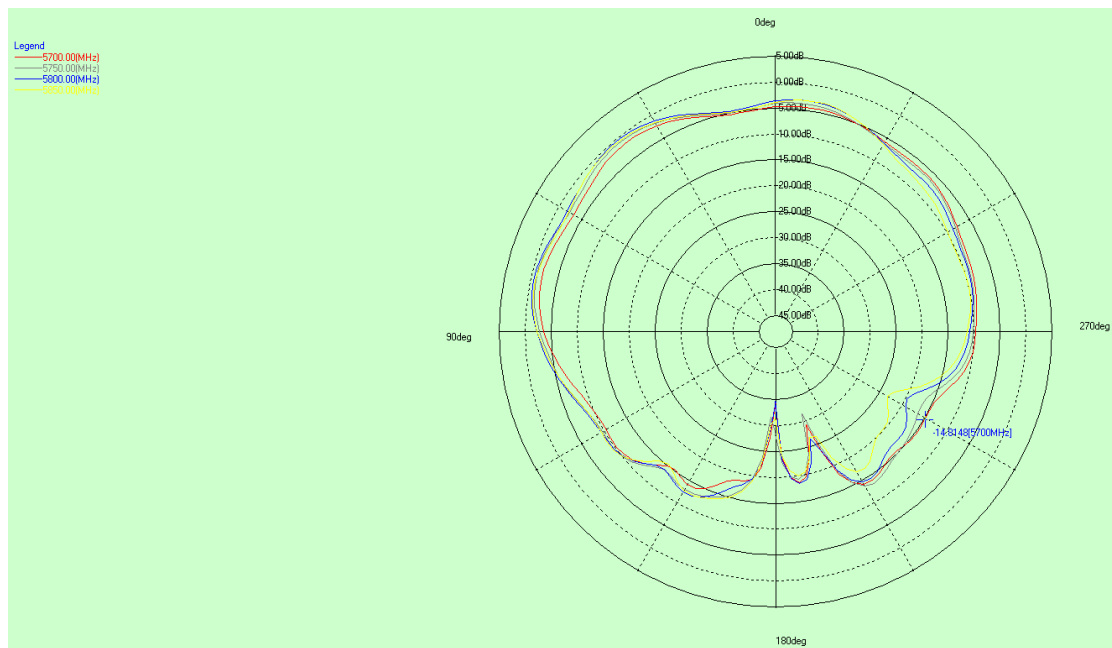
2.4 俯仰面



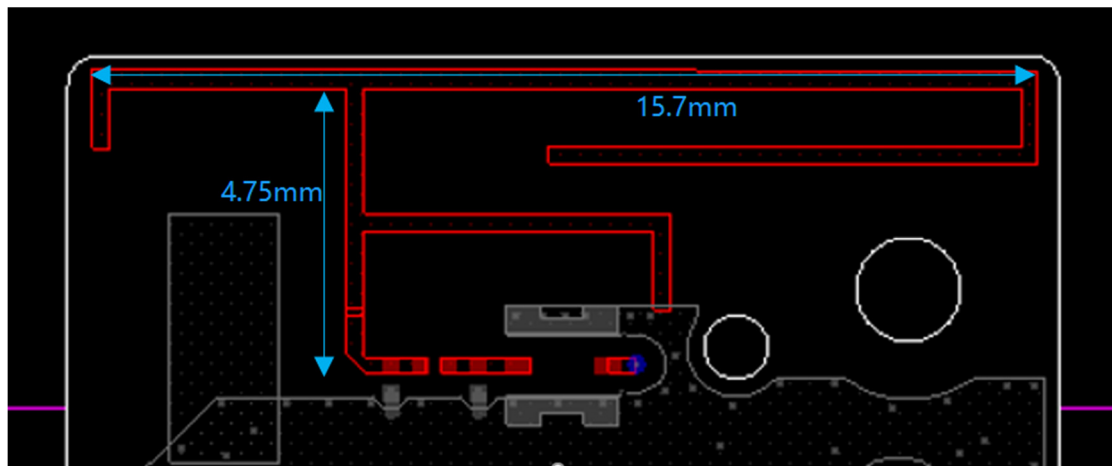
5.8 水平面



5.8 俯仰面



1.3 Structure drawing





2. WM260 UAV WIFI ANT1

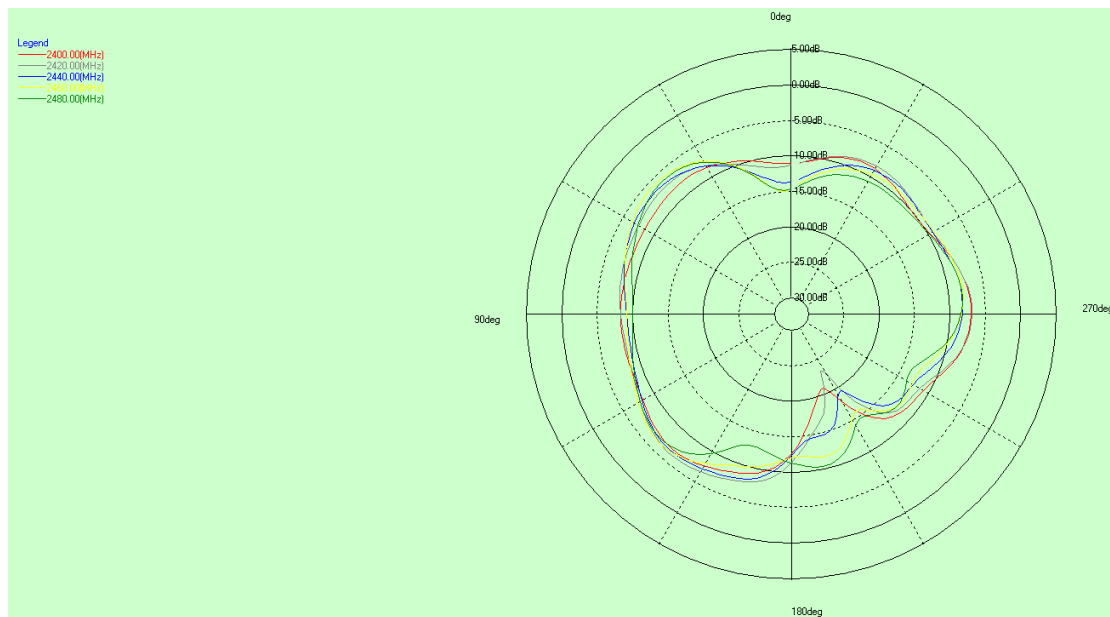
2.1 Basic Specifications

No.	Specification	Descriptions	Notes	
1	Antenna Name	WM260 UAV WIFI ANT1 R		
2	Brand	DJI		
3	Operation Frequency	2.4~2.483GHz; 5.725~5.85GHz		
4	Connector Type	4 代 IPEX		
5	Impedance	50ohm		
6	Gain	-2.5 dBi@2.4~2.483GHz 2.0 dBi@5.725~5.85GHz		
7	Efficiency	$\geq 15\%$		
8	VSWR	≤ 3.0		
9	Polarization type	Linear		
10	3dB Beamwidth	Omnidirectional horizontal		
11	Weight			

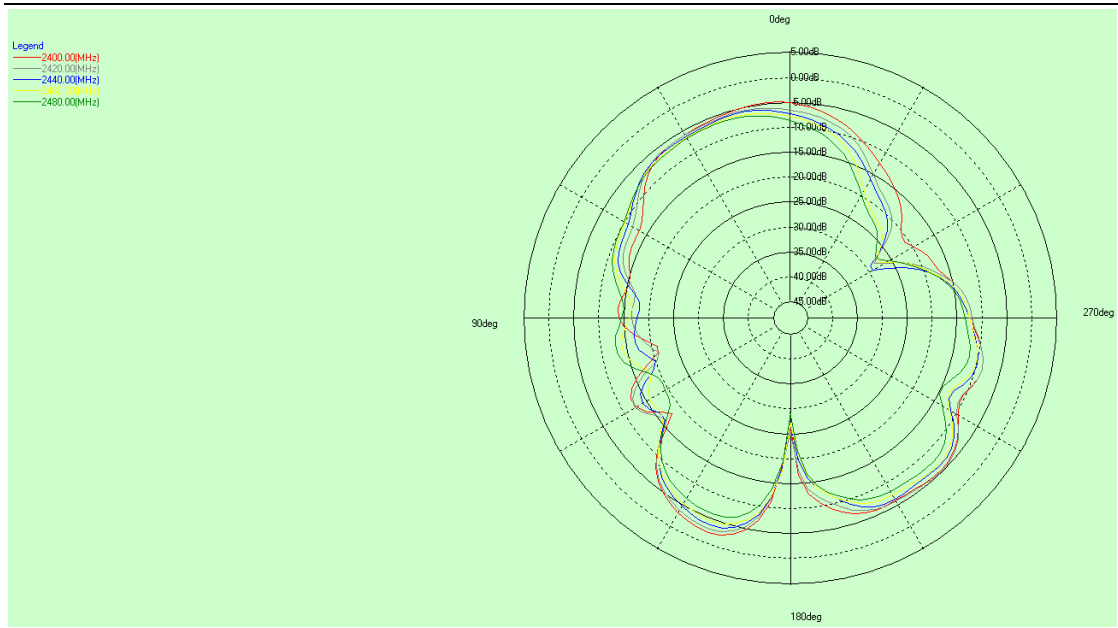
2.2 radiation pattern

Frequency (MHz)	Efficiency	Gain(dB)
2400	16%	-2.57
2420	17%	-2.50
2440	20%	-2.69
2460	19%	-2.61
2480	17%	-2.71
5700	33%	1.69
5750	36%	1.66
5800	35%	2.00
5850	34%	1.88

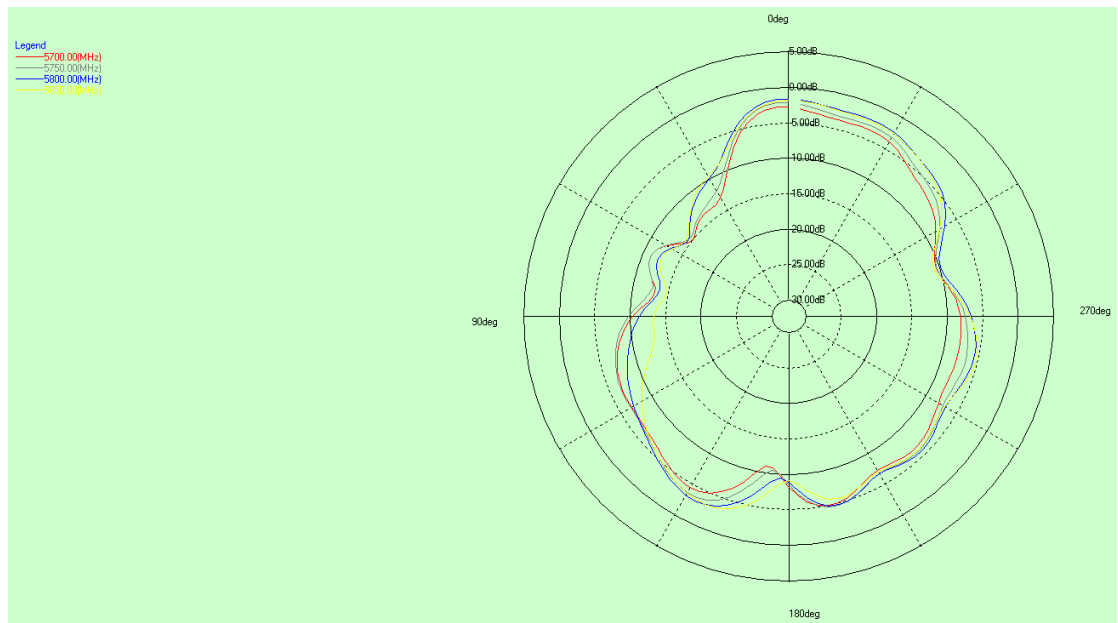
2.4 水平面



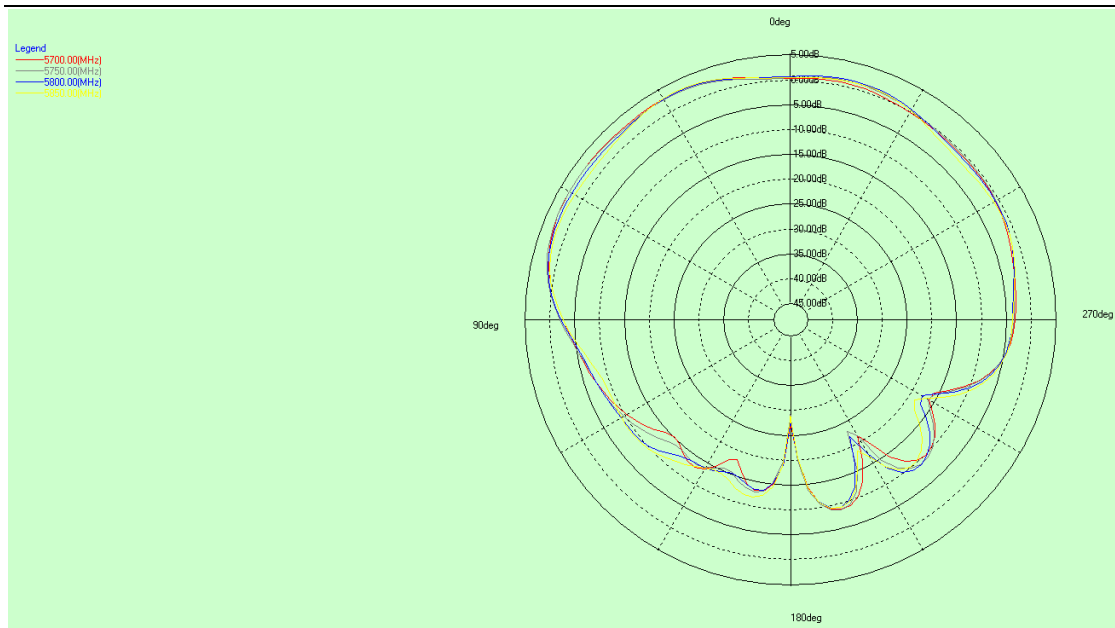
2.4 俯仰面



5.8 水平面



5.8 俯仰面



2.3 Structure drawing

