

SZ DJI TECHNOLOGY CO., LTD

FCC ID: SS3-JV312406

EUT 1 Name	JV31
EUT 1 Model Number	JV31
EUT 2 Name	JV32
EUT 2 Model Number	JV32
Model Difference	JV31, JV32 are the same except for the model name. JV31 and JV32 have the same have the same RF technical construction including circuit diagram, PCB Layout, components and component layout, and all electrical construction and mechanical construction, the difference lies only the gimbal which will not influence the RF part.

Model difference

JV31, JV32 are the same except for the model name.

JV31 and JV32 have the same have the same RF technical construction including circuit diagram, PCB Layout, components and component layout, and all electrical construction and mechanical construction, the difference lies only the gimbal and And related main board circuits (please refer to page 2-3)which will not influence the RF part.

1. Describe the non-RF boards, and circuitry differences.

No differences.

2. Describe the RF boards and circuitry differences.

No differences.

3. Describe the exterior casing and color differences.

The different is Gimbal(camera), for details, please refer to external photo

4. If no differences, provide the reason(s) for obtaining multiple PMN(s)/HVIN(s)/FVIN(s).

Not Applicable.

5. If family contains multiple versions for marketing purposes, detail the marketing detail differences such as names of distribution chains, packaging information, labeling information, etc.

Difference HVINs will show on the label.

6. If submitting multiple versions for future intro on market, provide future market launch plans and why not postponing certification of product versions not ready for market.

Not Applicable.

7. If chosen PMN or HVIN are already on the market in other countries but the devices are not identical to what is provided in the Canadian application, provide justification.

Not Applicable.

8. Provide internal & external photos for each product version.

please refer to internal & external photos for each product version.

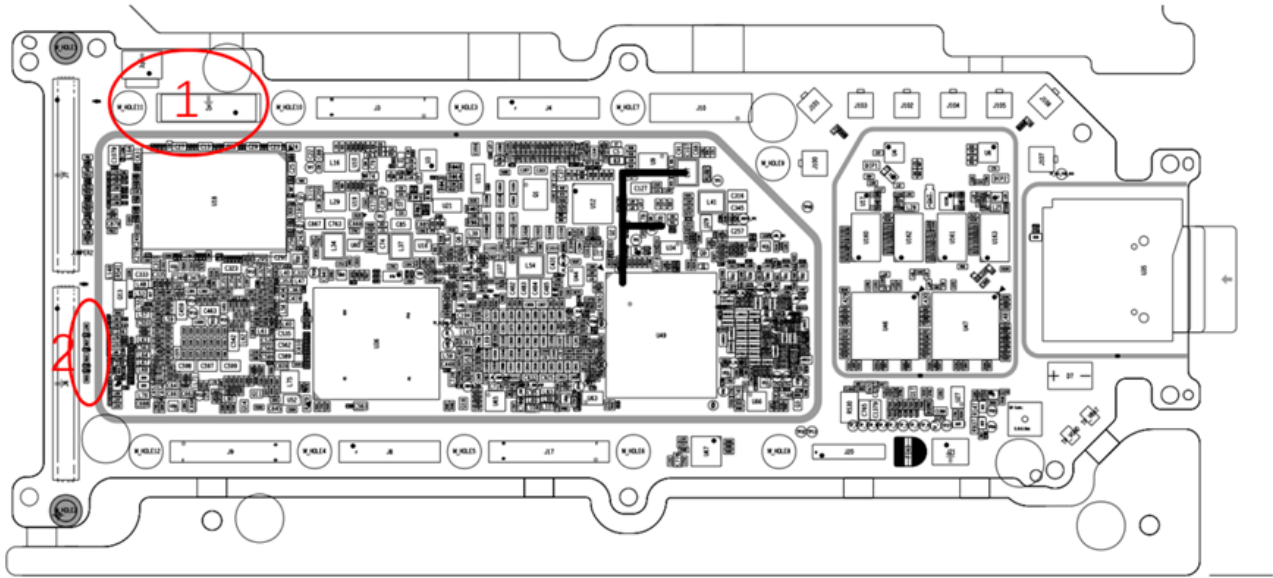
9. Provide manual and product labels for each product version.

please refer to manual and product labels for each product version.

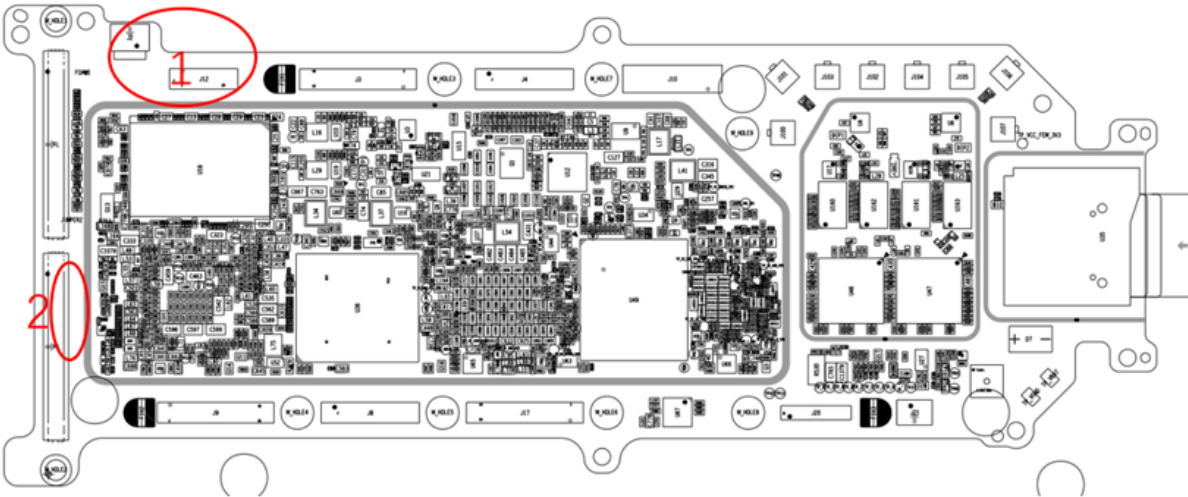
1: The non RF part of the circuit has different pin requirements due to different gimbal positions. The J5 connector added to WA345E and the J12 connector moved to the bottom surface

2: Non RF circuits are minor adjustments in layout

JV32



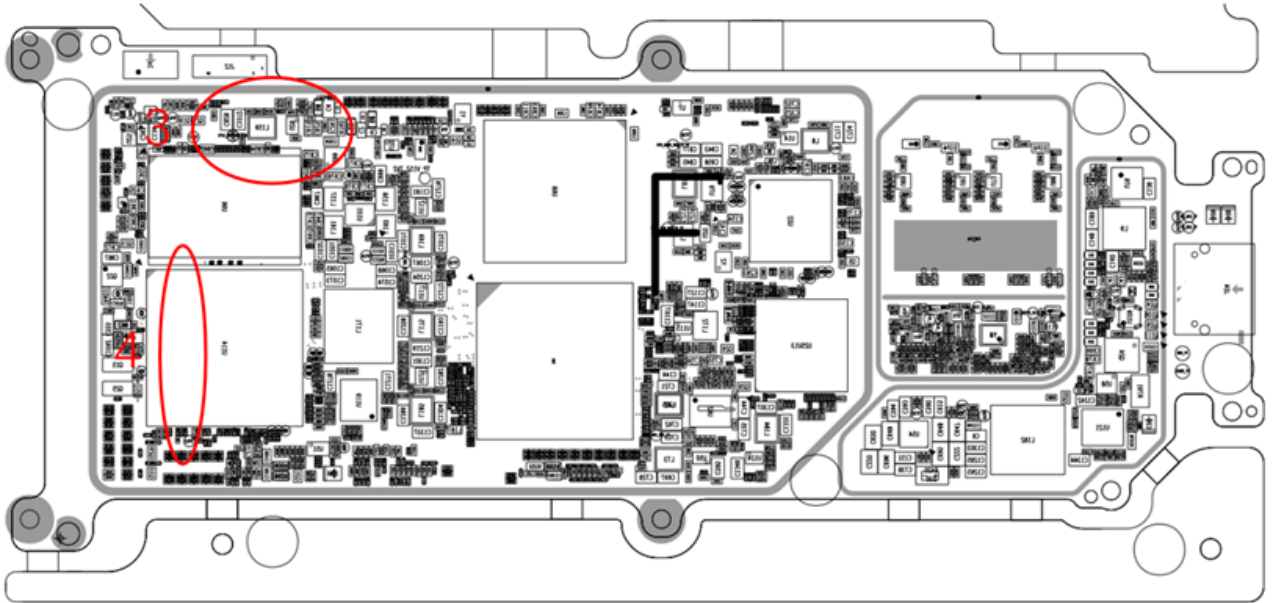
JV31



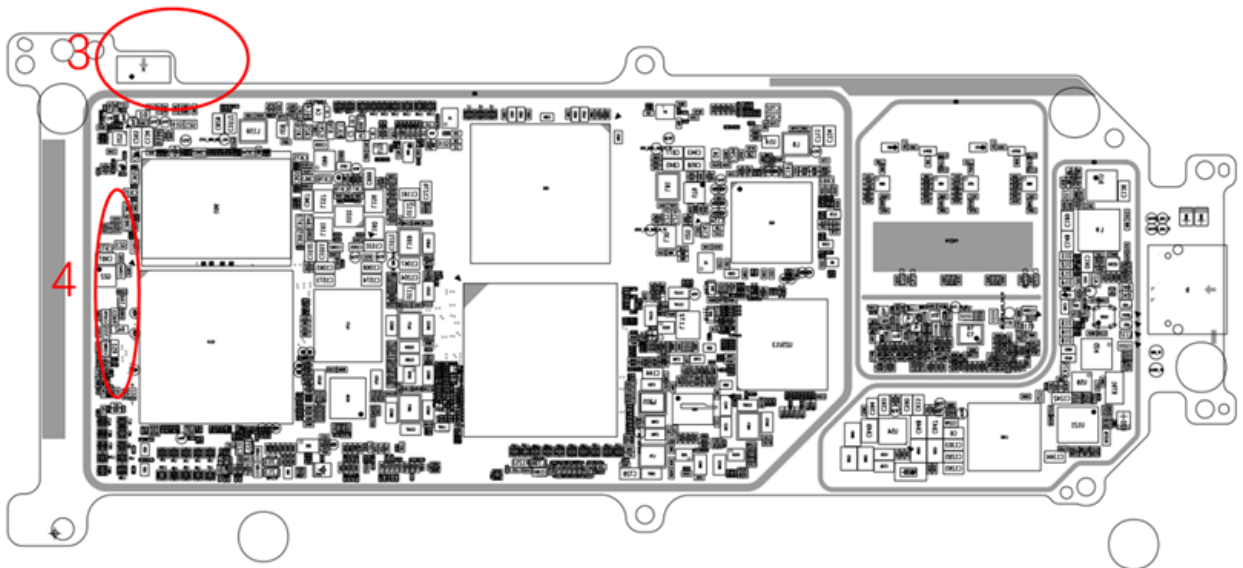
3. Transfer the J12 connector on point 1 to the bottom position

4. Minor layout adjustments for non RF circuits

JV32



JV31



Gary Zeng

Yours sincerely,
Name: Gary Zeng
Title and Company name:

SZ DJI TECHNOLOGY CO., LTD

Date: 2024/9/6