



REPORT No. : SZ14110153S01

FCC SAR TEST REPORT

APPLICANT : SZ DJI TECHNOLOGY CO., LTD
PRODUCT NAME : RONIN-M TX
MODEL NAME : RONIN-M TX
TRADE NAME : DJI
BRAND NAME : DJI
FCC ID : SS3-HG800TX15
STANDARD(S) : 47CFR 2.1093
IEEE 1528-2013
ISSUE DATE : 2015-3-23



SHENZHEN MORLAB COMMUNICATIONS TECHNOLOGY Co., Ltd.

NOTE: This document is issued by MORLAB, the test report shall not be reproduced except in full without prior written permission of the company. The test results apply only to the particular sample(s) tested and to the specific tests carried out which is available on request for validation and information confirmed at our website.

MORLAB GROUP

FL1-3, Building A, FeiYang Science Park, No.8 LongChang Road,
Block67, BaoAn District, ShenZhen , GuangDong Province, P. R. China

Tel: 86-755-36698555
Http://www.morlab.com

Fax: 86-755-36698525
E-mail: service@morlab.cn



DIRECTORY

TEST REPORT DECLARATION 4

1. TECHNICAL INFORMATION 5

1.1 IDENTIFICATION OF APPLICANT 5

1.2 IDENTIFICATION OF MANUFACTURER 5

1.3 EQUIPMENT UNDER TEST (EUT) 5

1.3.1 PHOTOGRAPHS OF THE EUT 5

1.3.2 IDENTIFICATION OF ALL USED EUT 5

1.4 APPLIED REFERENCE DOCUMENTS 6

1.5 DEVICE CATEGORY AND SAR LIMITS 6

2. SPECIFIC ABSORPTION RATE (SAR)..... 7

2.1 INTRODUCTION 7

2.2 SAR DEFINITION 7

3. SAR MEASUREMENT SETUP..... 8

3.1 THE MEASUREMENT SYSTEM 8

3.2 PROBE 8

3.3 PROBE CALIBRATION PROCESS 10

3.3.1 DOSIMETRIC ASSESSMENT PROCEDURE 10

3.3.2 FREE SPACE ASSESSMENT PROCEDURE 10

3.3.3 TEMPERATURE ASSESSMENT PROCEDURE 10

3.4 PHANTOM 11

3.5 DEVICE HOLDER 11

4. TISSUE SIMULATING LIQUIDS 12

5. UNCERTAINTY ASSESSMENT 13

5.1 UNCERTAINTY EVALUATION FOR EUT SAR TEST 13

5.2 UNCERTAINTY FOR SYSTEM PERFORMANCE CHECK 14



6. SAR MEASUREMENT EVALUATION..... 16

6.1 SYSTEM SETUP 16

6.2 VALIDATION RESULTS 17

7. OPERATIONAL CONDITIONS DURING TEST..... 18

7.1 BODY-WORN CONFIGURATIONS 18

7.2 MEASUREMENT PROCEDURE..... 18

7.3 DESCRIPTION OF INTERPOLATION/EXTRAPOLATION SCHEME 19

8. MEASUREMENT OF CONDUCTED OUTPUT POWER 20

9. TEST RESULTS LIST..... 21

ANNEX A GRAPH TEST RESULTS 23

ANNEX B GENERAL INFORMATION..... 34

Change History

| Issue | Date | Reason for change |
|-------|-----------|-------------------|
| 1.0 | 2015-1-23 | First edition |
| 2.0 | 2015-3-23 | Second editon |

**TEST REPORT DECLARATION**

| | | |
|--------------------------------|---|----------------|
| Applicant | SZ DJI TECHNOLOGY CO., LTD | |
| Applicant Address | 14th floor, West Wing, Skyworth Semiconductor Design Building NO.18 Gaoxin South 4th Ave, Nanshan District, Shenzhen, China | |
| Manufacturer | SZ DJI TECHNOLOGY CO., LTD | |
| Manufacturer Address | 14th floor, West Wing, Skyworth Semiconductor Design Building NO.18 Gaoxin South 4th Ave, Nanshan District, Shenzhen, China | |
| Product Name | RONIN-M TX | |
| Model Name | RONIN-M TX | |
| Brand Name | DJI | |
| HW Version | V1.0 | |
| SW Version | V1.0 | |
| Test Standards | 47CFR 2.1093; IEEE 1528-2013 | |
| Test Date | 2015-1-21 | |
| The Highest Reported SAR(W/kg) | Hand | 0.110W/kg(10g) |
| | Body | 0.271W/kg(1g) |

Tested by : Liu Jun

Liu Jun

Reviewed by : Peng Huarui

Peng Huarui

Approved by : Zeng Dexin

Zeng Dexin



1. TECHNICAL INFORMATION

Note: the Following data is based on the information by the applicant.

1.1 Identification of Applicant

| | |
|---------------|--|
| Company Name: | SZ DJI TECHNOLOGY CO., LTD |
| Address: | 17th floor, West Wing, Skyworth Semiconductor Design Building NO.18 Gaoxin South 4th Ave, Nanshan District, Shenzhen, China |

1.2 Identification of Manufacturer

| | |
|---------------|--|
| Company Name: | SZ DJI TECHNOLOGY CO., LTD |
| Address: | 17th floor, West Wing, Skyworth Semiconductor Design Building NO.18 Gaoxin South 4th Ave, Nanshan District, Shenzhen, China |

1.3 Equipment Under Test (EUT)

| | |
|---------------------|---------------------|
| Model Name: | RONIN-M TX |
| Trade Name: | DJI |
| Brand Name: | DJI |
| Hardware Version: | V1.0 |
| Software Version: | V1.0 |
| Tx Frequency Bands: | 2415-2473MHz |
| Uplink Modulations: | GFSK |
| DTM: | Not support |
| Antenna type: | External Antenna |
| Development Stage: | Identical prototype |
| Hotspot function: | Not Support |

1.3.1 Photographs of the EUT

Please refer to the External Photos for the Photos of the EUT

1.3.2 Identification of all used EUT

The EUT identity consists of numerical and letter characters, the letter character indicates the test sample, and the Following two numerical characters indicate the software version of the test sample.

| EUT Identity | Hardware Version | Software Version |
|--------------|------------------|------------------|
| 1# | V1.0 | V1.0 |



1.4 Applied Reference Documents

Leading reference documents for testing:

| No. | Identity | Document Title |
|-----|-----------------------------|--|
| 1 | 47 CFR§2.1093 | Radiofrequency Radiation Exposure Evaluation: Portable Devices |
| 2 | IEEE 1528-2013 | IEEE Recommended Practice for Determining the Peak Spatial-Average Specific Absorption Rate (SAR) in the Human Head from Wireless Communications Devices: Measurement Techniques |
| 3 | KDB 447498 D01v05r02 | General RF Exposure Guidance |
| 10 | KDB 941225 D07v01r01 | UMPC Mini Tablet |
| 11 | KDB 865664 D01v01r02 | SAR Measurement 100 MHz to 6 GHz |
| 12 | KDB 865664 D02v01r01 | SAR Reporting |

1.5 Device Category and SAR Limits

This device belongs to portable device category because its radiating structure is allowed to be used within 20 centimeters of the body of the user. Limit for General Population/Uncontrolled exposure should be applied for this device, it is 1.6 W/kg as averaged over any 1 gram of tissue for body, and 4.0W/kg as averaged over any 10 grams of tissue for hands, wrists, feet and ankles.



2. SPECIFIC ABSORPTION RATE (SAR)

2.1 Introduction

SAR is related to the rate at which energy is absorbed per unit mass in an object exposed to a radio field. The SAR distribution in a biological body is complicated and is usually carried out by experimental techniques or numerical modeling. The standard recommends limits for two tiers of groups, occupational/controlled and general population/uncontrolled, based on a person's awareness and ability to exercise control over his or her exposure. In general, occupational/controlled exposure limits are Low than the limits for general population/uncontrolled.

2.2 SAR Definition

The SAR definition is the time derivative (rate) of the incremental energy (dW) absorbed by (dissipated in) an incremental mass (dm) contained in a volume element (dv) of a given density. (ρ). The equation description is as below:

$$SAR = \frac{d}{dt} \left(\frac{dW}{dm} \right) = \frac{d}{dt} \left(\frac{dW}{\rho dv} \right)$$

SAR is expressed in units of Watts per kilogram (W/kg)

SAR measurement can be either related to the temperature elevation in tissue by,

$$SAR = c \left(\frac{\delta T}{\delta t} \right)$$

Where C is the specific heat capacity, δT is the temperature rise and δt the exposure duration, or related to the electrical field in the tissue by

$$SAR = \frac{\sigma |E|^2}{\rho}$$

Where σ is the conductivity of the tissue, ρ is the mass density of the tissue and $|E|$ is the rms electrical field strength.

However for evaluating SAR of low power transmitter, electrical field measurement is typically applied.

3. SAR MEASUREMENT SETUP

3.1 The Measurement System

Comosar is a system that is able to determine the SAR distribution inside a phantom of human being according to different standards. The Comosar system consists of the Following items:

- Main computer to control all the system
- 6 axis robot
- Data acquisition system
- Miniature E-field probe
- Phone holder
- Head simulating tissue

The Following figure shows the system.



The EUT under test operating at the maximum power level is placed in the phone holder, under the phantom, which is filled with head simulating liquid. The E-Field probe measures the electric field inside the phantom. The OpenSAR software computes the results to give a SAR value in a 1g or 10g mass.

3.2 Probe

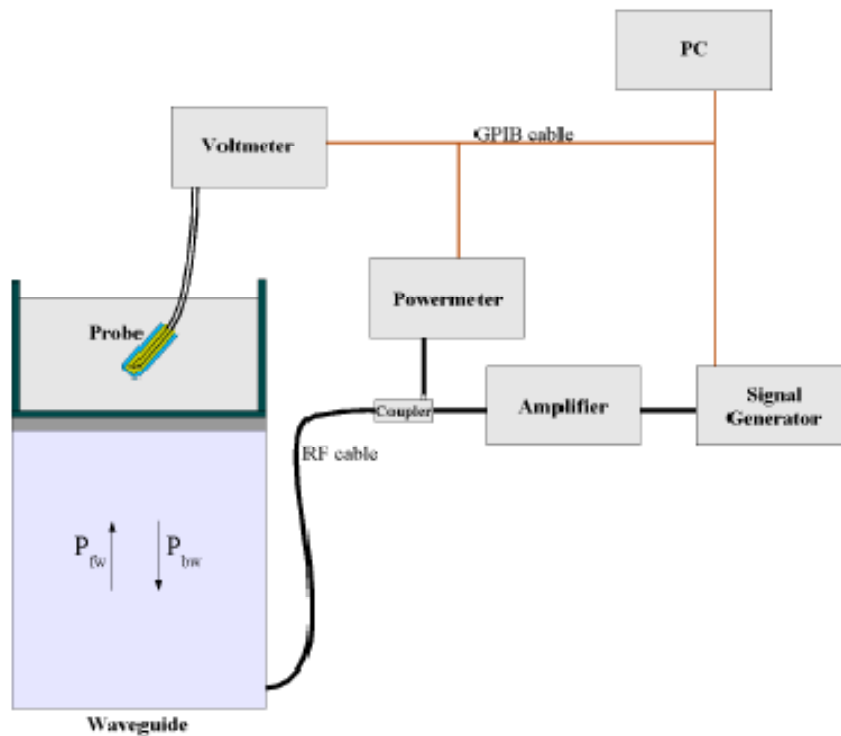
For the measurements the Specific Dosimetric E-Field Probe SN 37/08 EP80 with Following specifications is used

- Dynamic range: 0.01-100 W/kg
- Tip Diameter: 6.5 mm

- Distance between probe tip and sensor center: 2.5mm
- Distance between sensor center and the inner phantom surface: 4 mm
(repeatability better than +/- 1mm)
- Probe linearity: <0.25 dB
- Axial Isotropy: <0.25 dB
- Spherical Isotropy: <0.25 dB
- Calibration range: 835to 2500MHz for head & body simulating liquid.

Angle between probe axis (evaluation axis) and surface normal line: less than 30°

Probe calibration is realized, in compliance with CENELEC EN 62209 and IEEE 1528 std, with CALISAR, Antenna proprietary calibration system. The calibration is performed with the EN 622091 annex technique using reference guide at the five frequencies.



$$SAR = \frac{4(P_{fw} - P_{bw})}{ab\delta} \cos^2\left(\pi \frac{y}{a}\right) e^{-2z/\delta}$$

Where :

P_{fw} = Forward Power

P_{bw} = Backward Power

a and b = Waveguide dimensions

l = Skin depth



Keithley configuration:

Rate = Medium; Filter =ON; RDGS=10; FILTER TYPE =MOVING AVERAGE; RANGE AUTO

After each calibration, a SAR measurement is performed on a validation dipole and compared with a NPL calibrated probe, to verify it.

The calibration factors, CF(N), for the 3 sensors corresponding to dipole 1, dipole 2 and dipole 3 are:

$$CF(N)=SAR(N)/V_{lin}(N) \quad (N=1,2,3)$$

The linearised output voltage $V_{lin}(N)$ is obtained from the displayed output voltage $V(N)$ using

$$V_{lin}(N)=V(N)*(1+V(N)/DCP(N)) \quad (N=1,2,3)$$

Where DCP is the diode compression point in mV.

3.3 Probe Calibration Process

3.3.1 Dosimetric Assessment Procedure

Each E-Probe/Probe Amplifier combination has unique calibration parameters. SATIMO Probe calibration procedure is conducted to determine the proper amplifier settings to enter in the probe parameters. The amplifier settings are determined for a given frequency by subjecting the probe to a known E-field density (1 mW/cm^2) using an with CALISAR, Antenna proprietary calibration system.

3.3.2 Free Space Assessment Procedure

The free space E-field from amplified probe outputs is determined in a test chamber. This calibration can be performed in a TEM cell if the frequency is below 1 GHz and in a waveguide or other methodologies above 1 GHz for free space. For the free space calibration, the probe is placed in the volumetric center of the cavity and at the proper orientation with the field. The probe is rotated 360 degrees until the three channels show the maximum reading. The power density readings equates to 1 mW/cm^2 .

3.3.3 Temperature Assessment Procedure

E-field temperature correlation calibration is performed in a flat phantom filled with the appropriate simulating head tissue. The E-field in the medium correlates with the temperature rise in the dielectric medium. For temperature correlation calibration a RF transparent thermistor-based temperature probe is used in conjunction with the E-field probe.

Where:

$$\delta t = \text{exposure time (30 seconds),}$$

$$SAR = C \left(\frac{\delta T}{\delta t} \right)$$

C = heat capacity of tissue (brain or muscle),

δT = temperature increase due to RF exposure.

SAR is proportional to $\Delta T/\Delta t$, the initial rate of tissue heating, before thermal diffusion takes place. The electric field in the simulated tissue can be used to estimate SAR by equating the thermally derived SAR to that with the E- field component.

Where:

$$SAR = \frac{\sigma |E|^2}{\rho}$$

σ = simulated tissue conductivity,

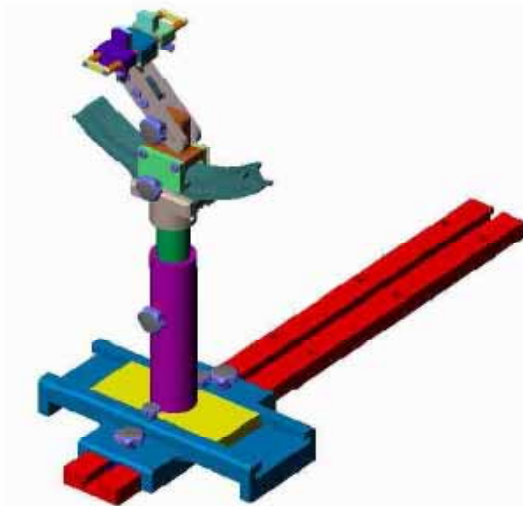
ρ = Tissue density (1.25 g/cm³ for brain tissue)

3.4 Phantom

For the measurements the Specific Anthropomorphic Mannequin (SAM) defined by the IEEE SCC-34/SC2 group is used. The phantom is a polyurethane shell integrated in a wooden table. The thickness of the phantom amounts to 2mm +/- 0.2mm. It enables the dosimetric evaluation of left and right phone usage and includes an additional flat phantom part for the simplified performance check. The phantom set-up includes a cover, which prevents the evaporation of the liquid.

3.5 Device Holder

The positioning system allows obtaining cheek and tilting position with a very good accuracy. In compliance with CENELEC, the tilt angle uncertainty is Low than 1°.



Device holder

| System Material | Permittivity | Loss Tangent |
|-----------------|--------------|--------------|
| Delrin | 3.7 | 0.005 |



4. TISSUE SIMULATING LIQUIDS

For SAR measurement of the field distribution inside the phantom, the phantom must be filled with homogeneous tissue simulating liquid to a depth of at least 15 cm. For head SAR testing, the liquid height from the ear reference point (ERP) of the phantom to the liquid top surface is larger than 15 cm. For body SAR testing, the liquid height from the center of the flat phantom to the liquid top surface is larger than 15 cm. The nominal dielectric values of the tissue simulating liquids in the phantom and the tolerance of 5% are listed in below table.

The following table gives the recipes for tissue simulating liquids

| | |
|--------------------------------|-------|
| Frequency Band (MHz) | 2450 |
| Tissue Type | Body |
| Ingredients (% by weight) | |
| Deionised Water | 73.20 |
| Salt(NaCl) | 0.10 |
| Sugar | 0.00 |
| Tween 20 | 0.00 |
| HEC | 0.00 |
| Bactericide | 0.00 |
| Triton X-100 | 0.00 |
| DGBE | 26.70 |
| Diethylenglycol monohexylether | 0.00 |
| Measured dielectric parameters | |
| Dielectric Constant | 52.70 |
| Conductivity (S/m) | 1.95 |

The dielectric properties of the tissue simulating liquids were verified prior to the SAR evaluation using an Agilent 85033E Dielectric Probe Kit and an Agilent Network Analyzer.

Table 1: Dielectric Performance of Tissue Simulating Liquid

| Temperature: 22.0~23.8°C, humidity: 54~60%. | | | | | | |
|---|------------|--|-------|--------|----------|-----------|
| Date | Freq.(MHz) | Liquid Parameters | Meas. | Target | Delta(%) | Limit±(%) |
| 2015/1/21 | Body 2450 | Relative Permittivity(ϵ_r): | 52.56 | 52.70 | -0.27 | 5 |
| | | Conductivity(σ): | 1.97 | 1.95 | 1.03 | 5 |



5. UNCERTAINTY ASSESSMENT

The Following table includes the uncertainty table of the IEEE 1528. The values are determined by Antennessa.

5.1 UNCERTAINTY EVALUATION FOR EUT SAR TEST

| a | b | c | d | e= f(d,k) | f | g | h= c*f/e | i= c*g/ e | k |
|--|-------------|--------------|---------------|--------------|------------|-------------|----------------|--------------------|---------|
| Uncertainty Component | Sec. | Tol (+-%) | Prob Dist. | Div. | Ci (1g) | Ci (10g) | 1g Ui (+-%) | 10g Ui (+-%) | Vi |
| Measurement System | | | | | | | | | |
| Probe calibration | E.2.1 | 4.76 | N | 1 | 1 | 1 | 4.76 | 4.7 | ∞ |
| Axial Isotropy | E.2.2 | 2.5 | R | $\sqrt{3}$ | 0.7 | 0.7 | 1.01 | 1.0 | ∞ |
| Hemispherical Isotropy | E.2.2 | 4.0 | R | $\sqrt{3}$ | 0.7 | 0.7 | 1.62 | 1.6 | ∞ |
| Boundary effect | E.2.3 | 1.0 | R | $\sqrt{3}$ | 1 | 1 | 0.58 | 0.5 | ∞ |
| Linearity | E.2.4 | 5.0 | R | $\sqrt{3}$ | 1 | 1 | 2.89 | 2.8 | ∞ |
| System detection limits | E.2.5 | 1.0 | R | $\sqrt{3}$ | 1 | 1 | 0.58 | 0.5 | ∞ |
| Readout Electronics | E.2.6 | 0.02 | N | 1 | 1 | 1 | 0.02 | 0.0 | ∞ |
| Reponse Time | E.2.7 | 3.0 | R | $\sqrt{3}$ | 1 | 1 | 1.73 | 1.7 | ∞ |
| Integration Time | E.2.8 | 2.0 | R | $\sqrt{3}$ | 1 | 1 | 1.15 | 1.1 | ∞ |
| RF ambient Conditions | E.6.1 | 3.0 | R | $\sqrt{3}$ | 1 | 1 | 1.73 | 1.7 | ∞ |
| Probe positioner Mechanical Tolerance | E.6.2 | 2.0 | R | $\sqrt{3}$ | 1 | 1 | 1.15 | 1.1 5 | ∞ |
| Probe positioning with respect to Phantom Shell | E.6.3 | 0.05 | R | $\sqrt{3}$ | 1 | 1 | 0.03 | 0.0 3 | ∞ |
| Extrapolation, interpolation and integration Algorithms for Max. SAR Evaluation | E.5.2 | 5.0 | R | $\sqrt{3}$ | 1 | 1 | 2.89 | 2.8 9 | ∞ |
| Test sample Related | | | | | | | | | |
| Test sample positioning | E.4.2. 1 | 0.03 | N | 1 | 1 | 1 | 0.03 | 0.0 3 | N- 1 |
| Device Holder Uncertainty | E.4.1. | 5.00 | N | 1 | 1 | 1 | 5.00 | 5.0 | N- |



| | | | | | | | | | |
|--|-------|-----------|-----|------------|------|------|-------|-----------|----------|
| | 1 | | | | | | | 0 | 1 |
| Output power Power drift - SAR drift measurement | 6.6.2 | 4.04 | R | $\sqrt{3}$ | 1 | 1 | 2.33 | 2.3 3 | ∞ |
| Phantom and Tissue Parameters | | | | | | | | | |
| Phantom Uncertainty (Shape and thickness tolerances) | E.3.1 | 0.05 | R | $\sqrt{3}$ | 1 | 1 | 0.03 | 0.0 3 | ∞ |
| Liquid conductivity - deviation from target value | E.3.2 | 4.57 | R | $\sqrt{3}$ | 0.64 | 0.43 | 1.69 | 1.1 3 | ∞ |
| Liquid conductivity - measurement uncertainty | E.3.3 | 5.00 | N | 1 | 0.64 | 0.43 | 3.20 | 2.1 5 | M |
| Liquid permittivity - deviation from target value | E.3.2 | 3.69 | R | $\sqrt{3}$ | 0.6 | 0.49 | 1.28 | 1.0 4 | ∞ |
| Liquid permittivity - measurement uncertainty | E.3.3 | 10.0 0 | N | 1 | 0.6 | 0.49 | 6.00 | 4.9 0 | M |
| Combined Standard Uncertainty | | | RSS | | | | 11.55 | 10. 67 | |
| Expanded Uncertainty (95% Confidence interval) | | | K=2 | | | | 23.11 | 21. 33 | |

5.2 UNCERTAINTY FOR SYSTEM PERFORMANCE CHECK

| a | b | c | d | e= f(d,k) | f | g | h= c*f/e | i= c*g/ e | k |
|---------------------------|-------|--------------|---------------|--------------|------------|-------------|----------------|--------------------|----------|
| Uncertainty Component | Sec. | Tol (+-%) | Prob Dist. | Div. | Ci (1g) | Ci (10g) | 1g Ui (+-%) | 10g Ui (+-%) | Vi |
| Measurement System | | | | | | | | | |
| Probe calibration | E.2.1 | 4.76 | N | 1 | 1 | 1 | 4.76 | 4.7 | ∞ |
| Axial Isotropy | E.2.2 | 2.5 | R | $\sqrt{3}$ | 0.7 | 0.7 | 1.01 | 1.0 | ∞ |
| Hemispherical Isotropy | E.2.2 | 4.0 | R | $\sqrt{3}$ | 0.7 | 0.7 | 1.62 | 1.6 | ∞ |
| Boundary effect | E.2.3 | 1.0 | R | $\sqrt{3}$ | 1 | 1 | 0.58 | 0.5 | ∞ |
| Linearity | E.2.4 | 5.0 | R | $\sqrt{3}$ | 1 | 1 | 2.89 | 2.8 | ∞ |
| System detection limits | E.2.5 | 1.0 | R | $\sqrt{3}$ | 1 | 1 | 0.58 | 0.5 | ∞ |
| Readout Electronics | E.2.6 | 0.02 | N | 1 | 1 | 1 | 0.02 | 0.0 | ∞ |

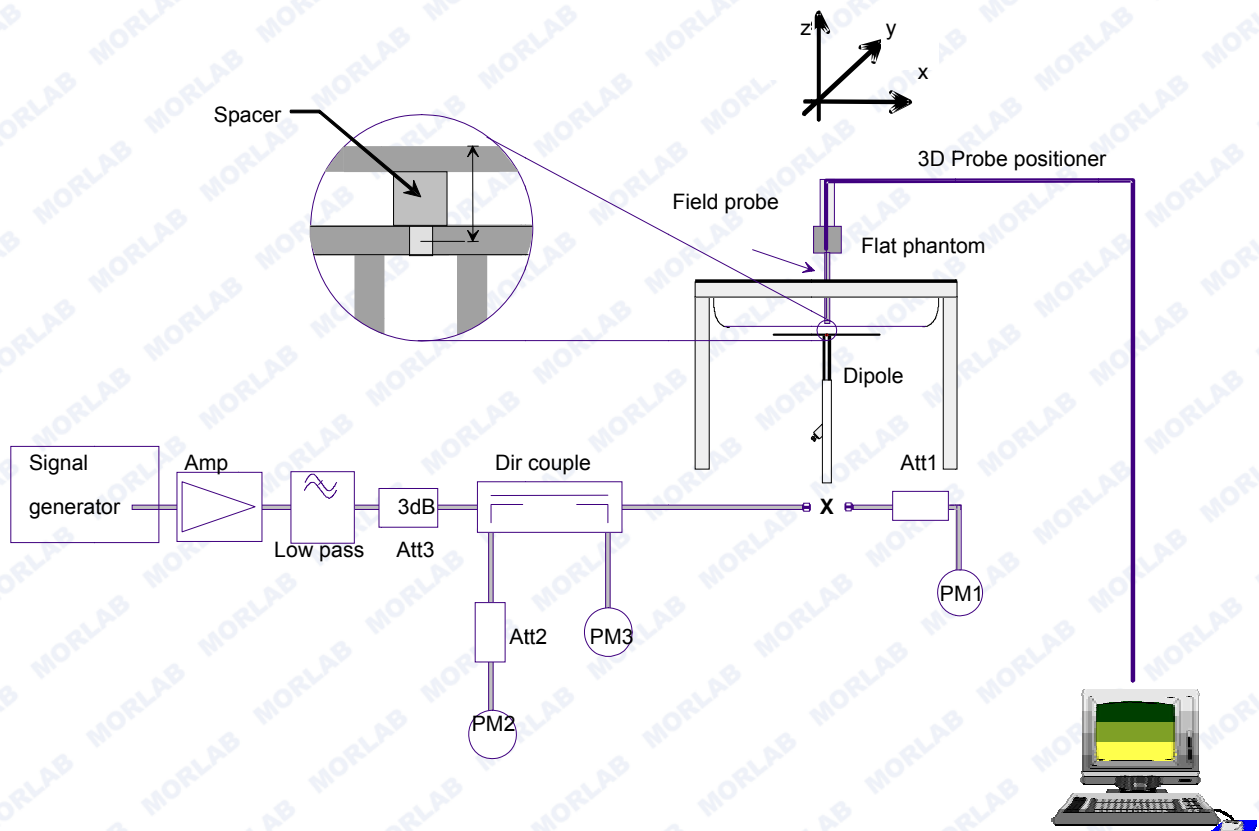


| | | | | | | | | | |
|--|-------------|-----------|-----|------------|------|------|-------|-----------|----------|
| Reponse Time | E.2.7 | 3.0 | R | $\sqrt{3}$ | 1 | 1 | 1.73 | 1.7 | ∞ |
| Integration Time | E.2.8 | 2.0 | R | $\sqrt{3}$ | 1 | 1 | 1.15 | 1.1 | ∞ |
| RF ambient Conditions | E.6.1 | 3.0 | R | $\sqrt{3}$ | 1 | 1 | 1.73 | 1.7 | ∞ |
| Probe positioner Mechanical Tolerance | E.6.2 | 2.0 | R | $\sqrt{3}$ | 1 | 1 | 1.15 | 1.1 5 | ∞ |
| Probe positioning with respect to Phantom Shell | E.6.3 | 0.05 | R | $\sqrt{3}$ | 1 | 1 | 0.03 | 0.0 3 | ∞ |
| Extrapolation, interpolation and integration Algorithms for Max. SAR Evaluation | E.5.2 | 5.0 | R | $\sqrt{3}$ | 1 | 1 | 2.89 | 2.8 9 | ∞ |
| Dipole | | | | | | | | | |
| Dipole axis to liquid Distance | 8,E.4. 2 | 1.00 | N | $\sqrt{3}$ | 1 | 1 | 0.58 | 0.5 8 | ∞ |
| Input power and SAR drift measurement | 8,6.6. 2 | 4.04 | R | $\sqrt{3}$ | 1 | 1 | 2.33 | 2.3 3 | ∞ |
| Phantom and Tissue Parameters | | | | | | | | | |
| Phantom Uncertainty (Shape and thickness tolerances) | E.3.1 | 0.05 | R | $\sqrt{3}$ | 1 | 1 | 0.03 | 0.0 3 | ∞ |
| Liquid conductivity - deviation from target value | E.3.2 | 4.57 | R | $\sqrt{3}$ | 0.64 | 0.43 | 1.69 | 1.1 3 | ∞ |
| Liquid conductivity - measurement uncertainty | E.3.3 | 5.00 | N | $\sqrt{3}$ | 0.64 | 0.43 | 1.85 | 1.2 4 | M |
| Liquid permittivity - deviation from target value | E.3.2 | 3.69 | R | $\sqrt{3}$ | 0.6 | 0.49 | 1.28 | 1.0 4 | ∞ |
| Liquid permittivity - measurement uncertainty | E.3.3 | 10.0 0 | N | $\sqrt{3}$ | 0.6 | 0.49 | 3.46 | 2.8 3 | M |
| Combined Standard Uncertainty | | | RSS | | | | 8.83 | 8.3 7 | |
| Expanded Uncertainty (95% Confidence interval) | | | K=2 | | | | 17.66 | 16. 73 | |

6. SAR MEASUREMENT EVALUATION

6.1 System Setup

In the simplified setup for system evaluation, the DUT is replaced by a calibrated dipole and the power source is replaced by a continuous wave which comes from a signal generator. The calibrated dipole must be placed beneath the flat phantom section of the SAM twin phantom with the correct distance holder. The distance holder should touch the phantom surface with a light pressure at the reference marking and be oriented parallel to the long side of the phantom. The system check verifies that the system operates within its specifications. It is performed daily or before every SAR measurement. The system check uses normal SAR measurements in the flat section of the phantom with a matched dipole at a specified distance. The system verification setup is shown as below



The validation dipole is placed beneath the flat phantom with the specific spacer in place. The distance spacer is touch the phantom surface with a light pressure at the reference marking and be oriented parallel to the long side of the phantom. The power meter PM1 measures the forward power at the location of the system check dipole connector. The signal generator is adjusted for the desired forward power (250 mW is used for 700 MHz to 3 GHz, 100 mW is used for 3.5 GHz to



6 GHz) at the dipole connector and the power meter PM2 is read at that level. After connecting the cable to the dipole, the signal generator is readjusted for the same reading at power meter PM2.

6.2 Validation Results

After system check testing, the SAR result will be normalized to 1W forward input power and compared with the reference SAR value derived from validation dipole certificate report. The deviation of system check should be within 10 %.

| Frequency | 2450MHz |
|---------------------------------------|-----------------------|
| Target value 1W (1g) | 56.13 W/Kg |
| Test value 1g (250 mW input power) | 12.964 W/Kg (1.21) |
| Normalized to 1W value(1g) | 51.856 W/Kg |

| Frequency | 2450MHz |
|--|----------------------|
| Target value 1W (10g) | 25.34 W/Kg |
| Test value 10g (250 mW input power) | 6.574 W/Kg (1.21) |
| Normalized to 1W value(10g) | 26.296 W/Kg |

Note: System checks the specific test data please see 32~33.

7. OPERATIONAL CONDITIONS DURING TEST

7.1 Body-worn Configurations

The body-worn configurations shall be tested with the supplied accessories (belt-clips, holsters, etc.) attached to the device in normal use configuration.

For body-worn and other configurations a flat phantom shall be used which is comprised of material with electrical properties similar to the corresponding tissues.

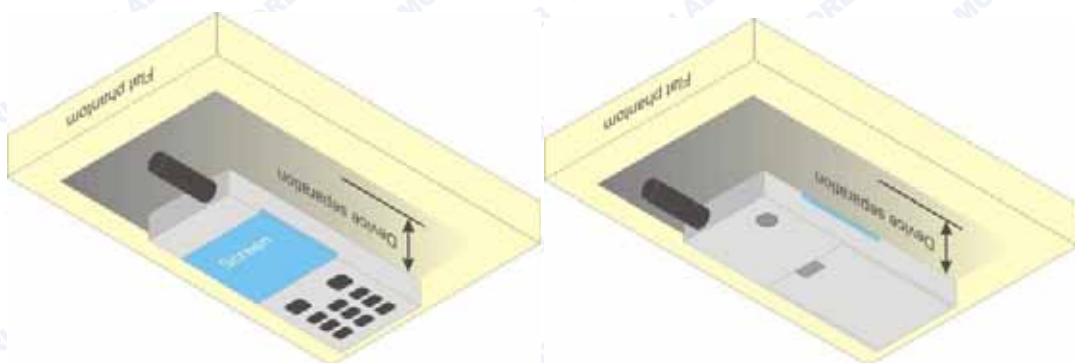


Illustration for Body Worn Position

7.2 Measurement procedure

The Following steps are used for each test position

1. Establish a call with the maximum output power with a base station simulator. The connection between the mobile and the base station simulator is established via air interface.
2. Measurement of the local E-field value at a fixed location. This value serves as a reference value for calculating a possible power drift.
3. Measurement of the SAR distribution with a grid of 8 to 16mm * 8 to 16 mm and a constant distance to the inner surface of the phantom. Since the sensors cannot directly measure at the inner phantom surface, the values between the sensors and the inner phantom surface are extrapolated. With these values the area of the maximum SAR is calculated by an interpolation scheme.
4. Around this point, a cube of 30 * 30 * 30 mm or 32 * 32 * 32 mm is assessed by measuring 5 or 8 * 5 or 8*4 or 5 mm. With these data, the peak spatial-average SAR value can be calculated.



7.3 Description of interpolation/extrapolation scheme

The local SAR inside the phantom is measured using small dipole sensing elements inside a probe body. The probe tip must not be in contact with the phantom surface in order to minimize measurements errors, but the highest local SAR will occur at the surface of the phantom.

An extrapolation is using to determinate this highest local SAR values. The extrapolation is based on a fourth-order least-square polynomial fit of measured data. The local SAR value is then extrapolated from the liquid surface with a 1mm step.

The measurements have to be performed over a limited time (due to the duration of the battery) so the step of measurement is high. It could vary between 5 and 8 mm. To obtain an accurate assessment of the maximum SAR averaged over 10 grams and 1 gram requires a very fine resolution in the three dimensional scanned data array.



8. MEASUREMENT OF CONDUCTED OUTPUT POWER

1. 2.4G Conducted Output Power

| Band | Channel | Frequency (MHz) | Output Power(dBm) |
|------|---------|-----------------|-------------------|
| | | | GFSK |
| 2.4G | Low | 2415 | 15.67 |
| | Low | 2443 | 15.31 |
| | High | 2473 | 13.98 |



9. TEST RESULTS LIST

Summary of Measurement Results (2.4G)

| Temperature: 21.0~23.8°C, humidity: 54~60%. | | | | | |
|---|-----------------------|---------------------|--------------------|----------------|-----------------------|
| Phantom Configurations | Device Test Positions | Device Test channel | SAR(W/Kg), 1g Peak | Scaling Factor | Scaled SAR (W/Kg), 1g |
| Body (0mm Separation) | Face Upward | Low | 0.032 | 1.079 | 0.035 |
| | Edge A | | 0.251 | | 0.271 |
| | Edge B | | 0.152 | | 0.164 |
| | Edge C | | 0.161 | | 0.174 |

| Temperature: 21.0~23.8°C, humidity: 54~60%. | | | | | |
|---|-----------------------|---------------------|---------------------|----------------|------------------------|
| Phantom Configurations | Device Test Positions | Device Test channel | SAR(W/Kg), 10g Peak | Scaling Factor | Scaled SAR (W/Kg), 10g |
| Body (0mm Separation) | Hand | Low | 0.011 | 1.079 | 0.012 |
| | | | 0.102 | | 0.110 |
| | | | 0.058 | | 0.063 |
| | | | 0.064 | | 0.069 |

Note:

- When the 1-g SAR for the mid-band channel or the channel with the highest output power satisfy the following conditions, testing of the other channels in the band is not required. (Per KDB 447498 D01 General RF Exposure Guidance v05r02)
 - ≤ 0.8 W/kg and transmission band ≤ 100 MHz
 - ≤ 0.6 W/kg and, 100 MHz < transmission bandwidth ≤ 200 MHz
 - ≤ 0.4 W/kg and transmission band > 200 MHz
- IEEE Std 1528-2013 requires the Low channel to be tested first. This generally applies to wireless devices that are designed to operate in technologies with tight tolerances for maximum output power variations across channels in the band. When the maximum output power variation across the required test channels is > ½ dB, instead of the Low channel, the highest output power channel must be used.



3. Per KDB 447498, when the SAR procedures require multiple channels to be tested and the 1-g SAR for the highest output channel is less than 0.8 W/kg and peak SAR is less than 1.6W/kg, where the transmission band corresponding to all channels is ≤ 100 MHz, testing for the other channels is not required.

4. Scaling Factor calculation

| Band | Tune-up power tolerance(dBm) | SAR test channel Power (dBm) | Scaling Factor |
|------|------------------------------|------------------------------|----------------|
| 2.4G | PCL = 5, PWR =15.5+-0.5 | 15.67 | 1.079 |



ANNEX A GRAPH TEST RESULTS

| BAND | <u>PARAMETERS</u> |
|--------------------|--|
| <u>2.4G</u> | <u>Measurement 1:</u> Flat Plane with Body device position on Low Channel in GFSK mode <u>Measurement 2:</u> Flat Plane with Body device position on Low Channel in GFSK mode <u>Measurement 3:</u> Flat Plane with Body device position on Low Channel in GFSK mode <u>Measurement 4:</u> Flat Plane with Body device position on Low Channel in GFSK mode |

**MEASUREMENT 1**

Type: Phone measurement (Complete)

Area scan resolution: dx=8mm,dy=8mm

Zoom scan resolution: dx=5mm, dy=5mm, dz=5mm

Date of measurement: 2015.1.21

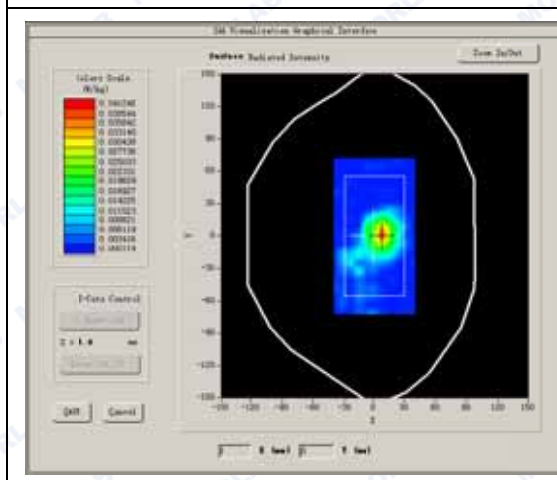
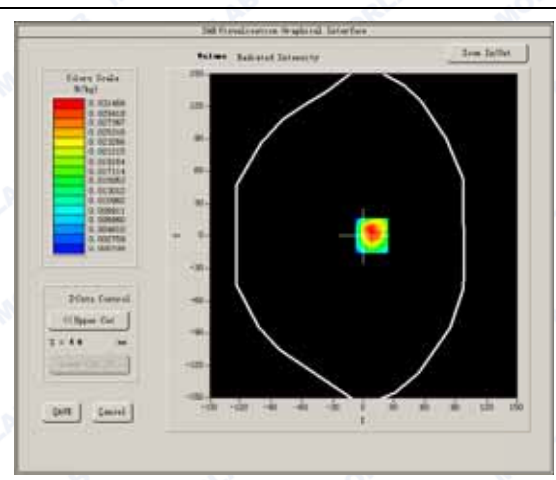
Measurement duration: 9 minutes 37 seconds

A. Experimental conditions.

| | |
|-----------------|-------------------|
| Phantom File | surf_sam_plan.txt |
| Phantom | Validation plane |
| Device Position | Body |
| Band | 2.4G |
| Channels | Low |
| Signal | GFSK |

B. SAR Measurement Results**Low Band SAR**

| | |
|-----------------------------------|-------------|
| Frequency (MHz) | 2415.000000 |
| Relative permittivity (real part) | 52.560963 |
| Conductivity (S/m) | 1.972458 |
| Power drift (%) | 1.470000 |
| Ambient Temperature: | 22.9°C |
| Liquid Temperature: | 22.1°C |
| ConvF: | 4.96 |
| Crest factor: | 1:1 |

SURFACE SAR**VOLUME SAR**

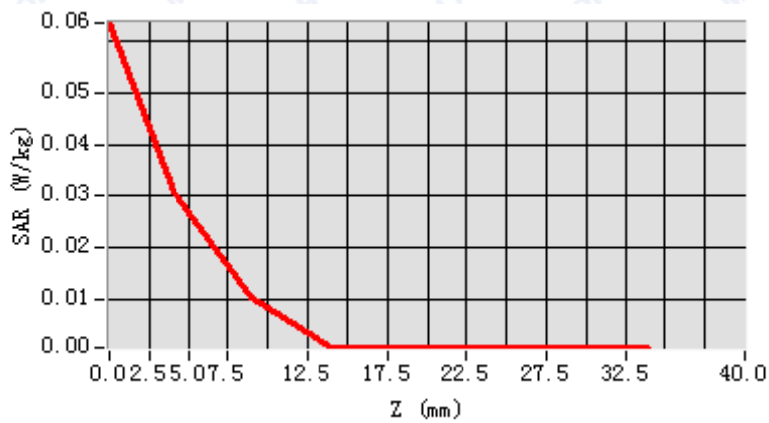


Maximum location: X=8.00, Y=0.00

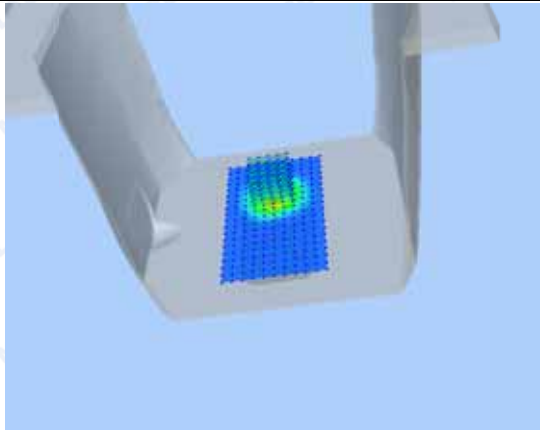
SAR Peak: 0.07 W/kg

| | |
|----------------|----------|
| SAR 10g (W/Kg) | 0.010610 |
| SAR 1g (W/Kg) | 0.031822 |

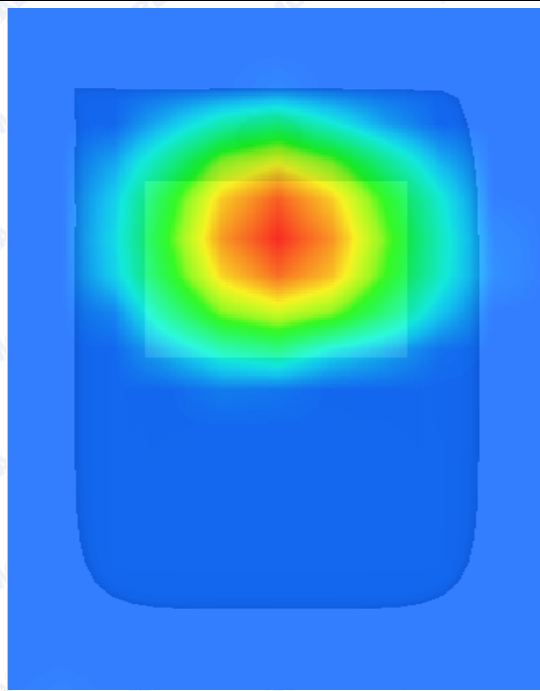
Z axis scan



3D screen shot



Hot spot position





MEASUREMENT 2

Type: Phone measurement (Complete)

Area scan resolution: dx=8mm,dy=8mm

Zoom scan resolution: dx=5mm, dy=5mm, dz=5mm

Date of measurement: 2015.1.21

Measurement duration: 9 minutes 35 seconds

A. Experimental conditions.

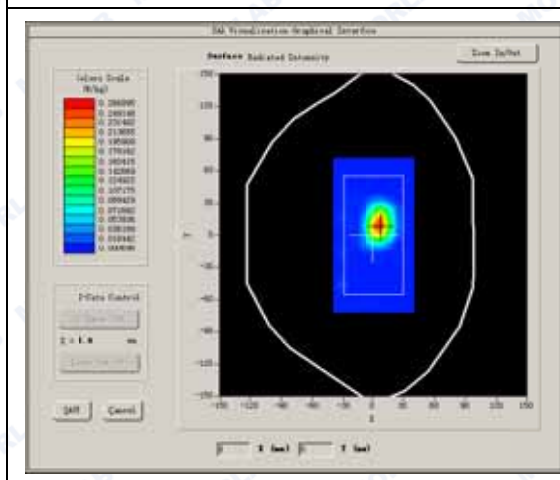
| | |
|------------------------|-------------------|
| Phantom File | surf_sam_plan.txt |
| Phantom | Validation plane |
| Device Position | Body |
| Band | 2.4G |
| Channels | Low |
| Signal | GFSK |

B. SAR Measurement Results

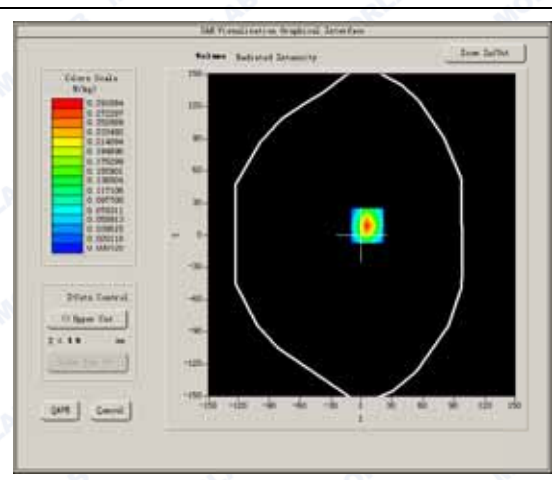
Low Band SAR

| | |
|--|-------------|
| Frequency (MHz) | 2415.000000 |
| Relative permittivity (real part) | 52.560963 |
| Conductivity (S/m) | 1.972458 |
| Power drift (%) | 0.880000 |
| Ambient Temperature: | 22.9°C |
| Liquid Temperature: | 22.1°C |
| ConvF: | 4.96 |
| Crest factor: | 1:1 |

SURFACE SAR



VOLUME SAR



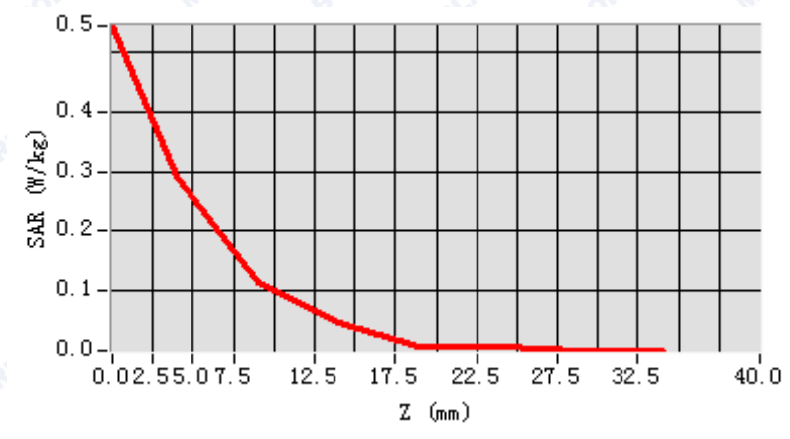


Maximum location: X=6.00, Y=9.00

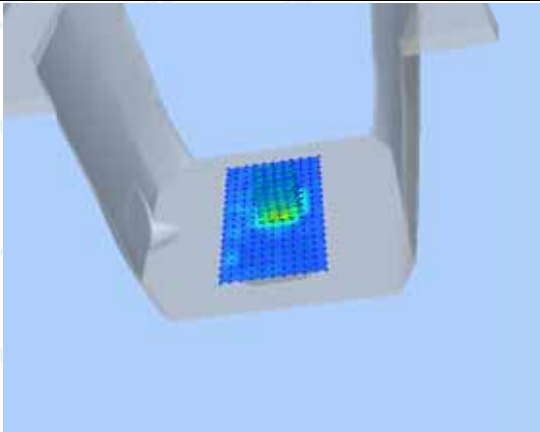
SAR Peak: 0.59 W/kg

| | |
|----------------|----------|
| SAR 10g (W/Kg) | 0.102068 |
| SAR 1g (W/Kg) | 0.251189 |

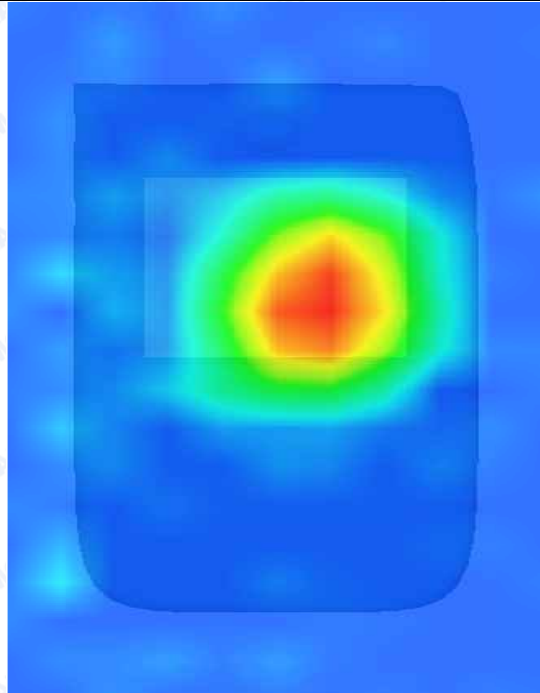
Z axis scan



3D screen shot



Hot spot position





MEASUREMENT 3

Type: Phone measurement (Complete)
 Area scan resolution: dx=8mm,dy=8mm
 Zoom scan resolution: dx=5mm, dy=5mm, dz=5mm
 Date of measurement: 2015.1.21
 Measurement duration: 9 minutes 36 seconds

A. Experimental conditions.

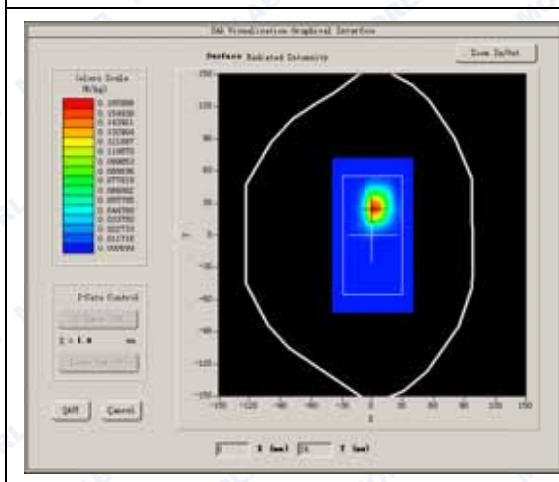
| | |
|-----------------|-------------------|
| Phantom File | surf_sam_plan.txt |
| Phantom | Validation plane |
| Device Position | Body |
| Band | 2.4G |
| Channels | Low |
| Signal | GFSK |

B. SAR Measurement Results

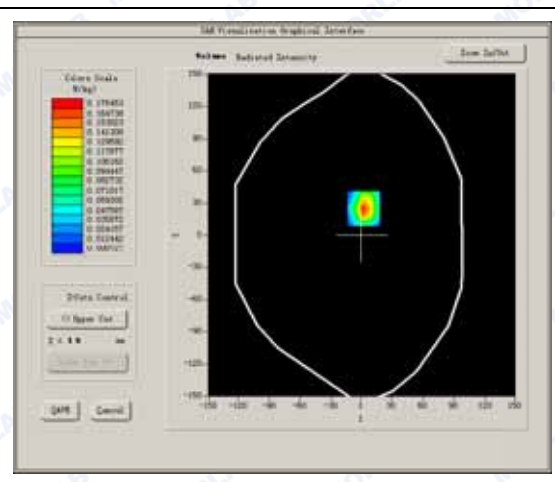
Low Band SAR

| | |
|-----------------------------------|-------------|
| Frequency (MHz) | 2415.000000 |
| Relative permittivity (real part) | 52.560963 |
| Conductivity (S/m) | 1.972458 |
| Power drift (%) | 1.840000 |
| Ambient Temperature: | 22.9°C |
| Liquid Temperature: | 22.1°C |
| ConvF: | 4.96 |
| Crest factor: | 1:1 |

SURFACE SAR



VOLUME SAR



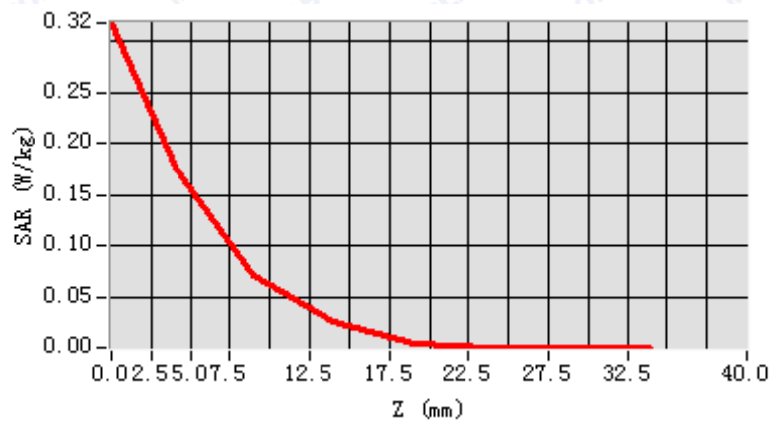


Maximum location: X=2.00, Y=25.00

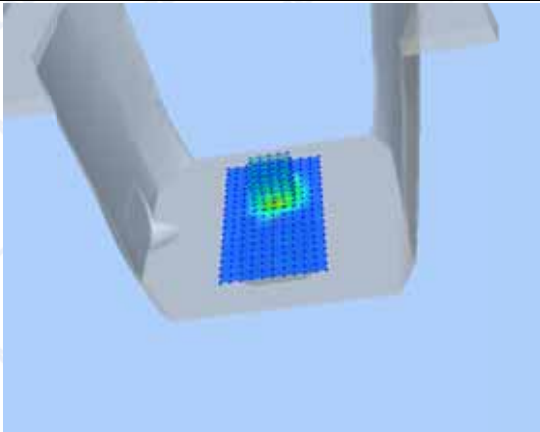
SAR Peak: 0.36 W/kg

| | |
|----------------|----------|
| SAR 10g (W/Kg) | 0.058220 |
| SAR 1g (W/Kg) | 0.152451 |

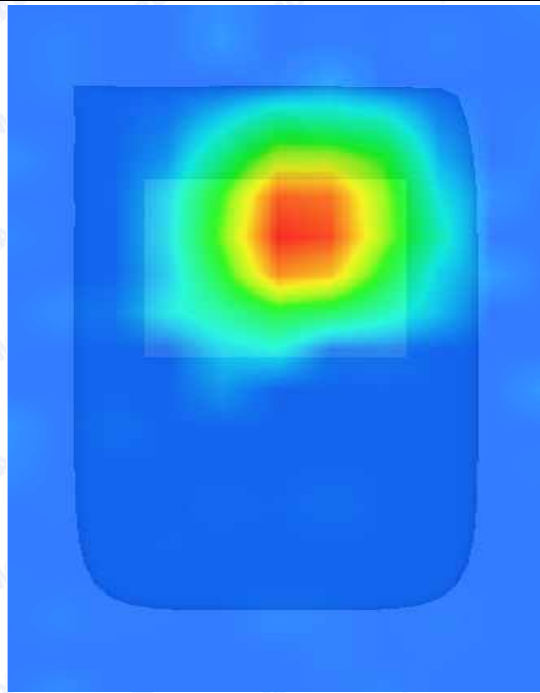
Z axis scan



3D screen shot



Hot spot position





MEASUREMENT 4

Type: Phone measurement (Complete)

Area scan resolution: dx=8mm,dy=8mm

Zoom scan resolution: dx=5mm, dy=5mm, dz=5mm

Date of measurement: 2015.1.21

Measurement duration: 9 minutes 31 seconds

A. Experimental conditions.

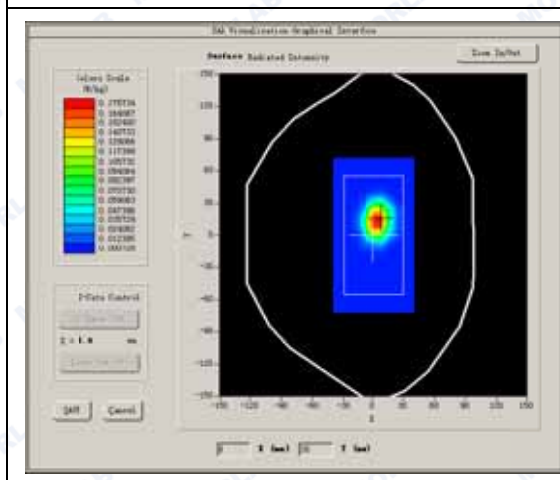
| | |
|-----------------|-------------------|
| Phantom File | surf_sam_plan.txt |
| Phantom | Validation plane |
| Device Position | Body |
| Band | 2.4G |
| Channels | Low |
| Signal | GFSK |

B. SAR Measurement Results

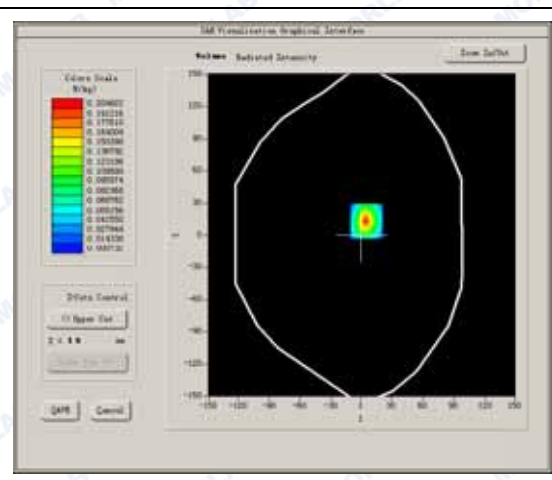
Low Band SAR

| | |
|-----------------------------------|-------------|
| Frequency (MHz) | 2415.000000 |
| Relative permittivity (real part) | 52.560963 |
| Conductivity (S/m) | 1.972458 |
| Power drift (%) | -2.970000 |
| Ambient Temperature: | 22.9°C |
| Liquid Temperature: | 22.1°C |
| ConvF: | 4.96 |
| Crest factor: | 1:1 |

SURFACE SAR



VOLUME SAR



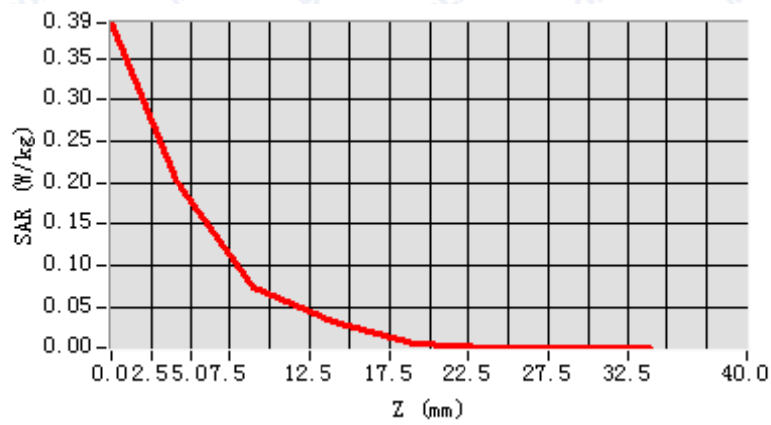


Maximum location: X=5.00, Y=13.00

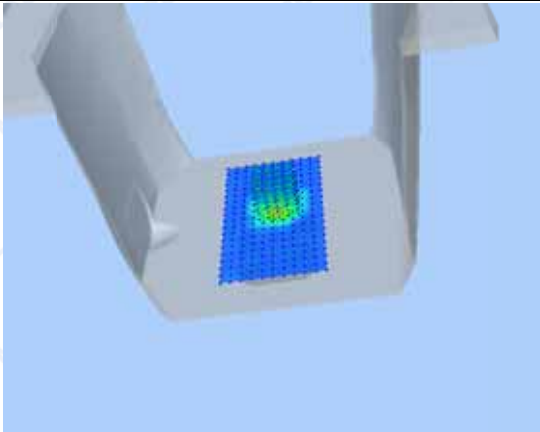
SAR Peak: 0.39 W/kg

| | |
|----------------|----------|
| SAR 10g (W/Kg) | 0.063875 |
| SAR 1g (W/Kg) | 0.161305 |

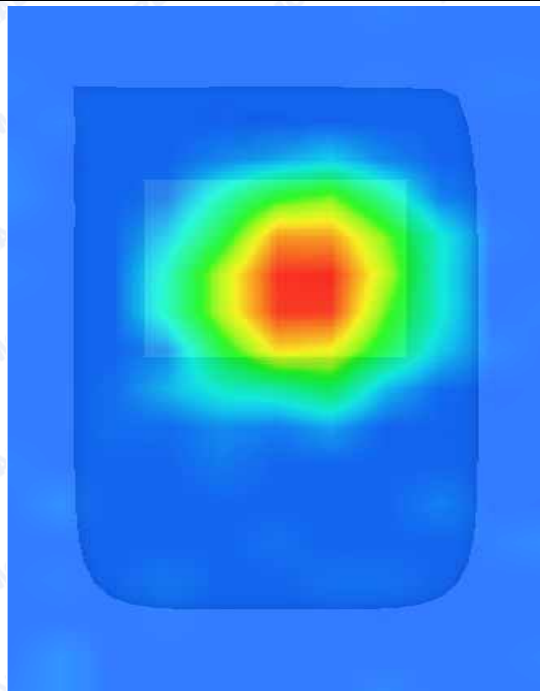
Z axis scan



3D screen shot



Hot spot position





System Performance Check Data(Body)

Type: Phone measurement (Complete)

Area scan resolution: dx=8mm,dy=8mm

Zoom scan resolution: dx=5mm, dy=5mm, dz=5mm

Date of measurement: 2015.1.21

Measurement duration: 13 minutes 27 seconds

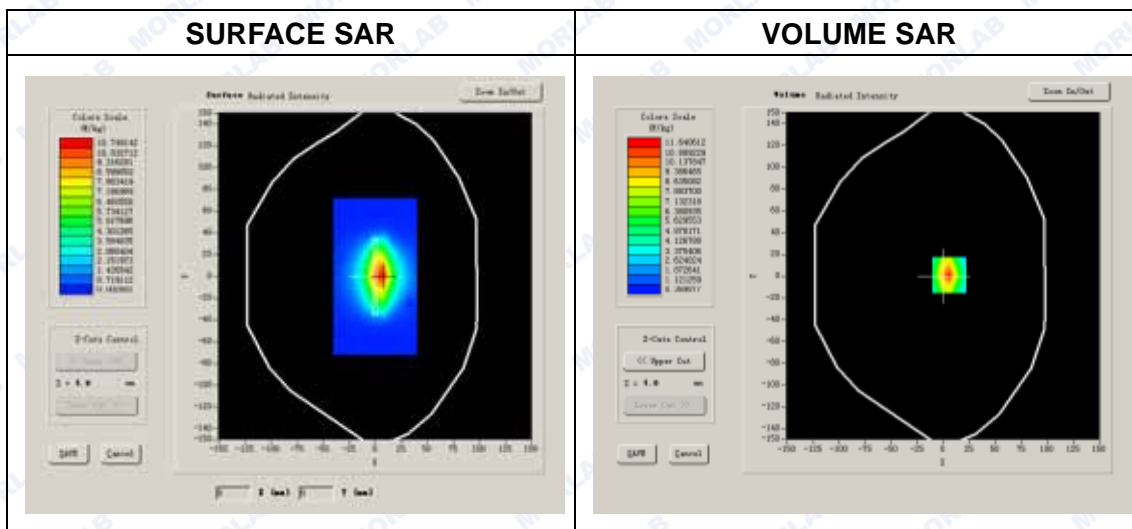
A. Experimental conditions.

| | |
|-----------------|-------------------|
| Phantom File | surf_sam_plan.txt |
| Phantom | Validation plane |
| Device Position | |
| Band | 2450MHz |
| Channels | |
| Signal | CW |

B. SAR Measurement Results

Band SAR

| | |
|-----------------------------------|-------------|
| Frequency (MHz) | 2450.000000 |
| Relative permittivity (real part) | 52.560963 |
| Conductivity (S/m) | 1.972458 |
| Power Drift (%) | 0.630000 |
| Ambient Temperature: | 22.9°C |
| Liquid Temperature: | 22.1°C |
| ConvF: | 4.96 |
| Crest factor: | 1:1 |





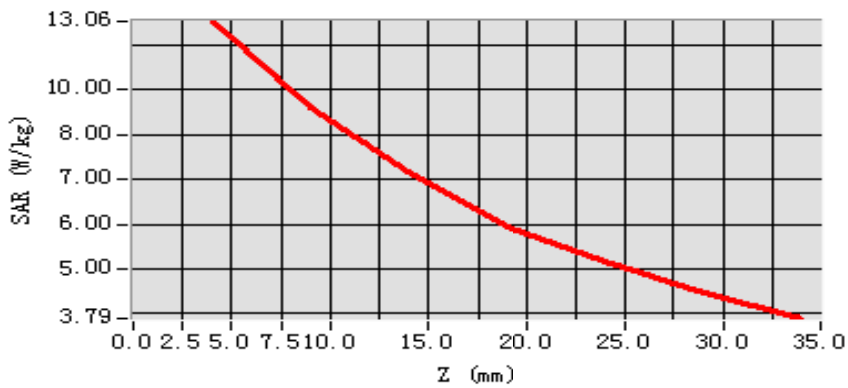
Maximum location: X=-1.00, Y=-50.00

| | |
|----------------|-----------|
| SAR 10g (W/Kg) | 6.574021 |
| SAR 1g (W/Kg) | 12.964012 |

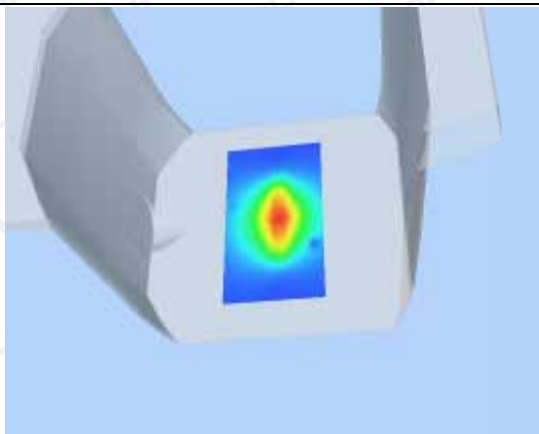
Z Axis Scan

| Z (mm) | 0.00 | 4.00 | 9.00 | 14.00 | 19.00 |
|------------|--------|---------|--------|--------|--------|
| SAR (W/Kg) | 0.0000 | 13.1279 | 6.8312 | 3.5991 | 1.3473 |

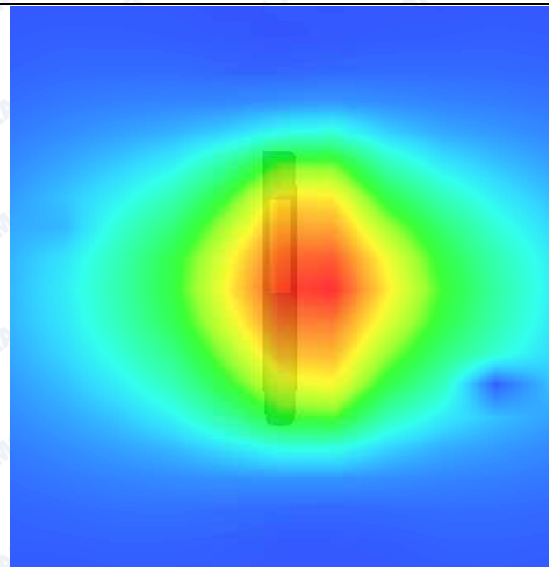
SAR, Z Axis Scan (X = -1, Y = -50)



3D scene shot



Hot spot position





ANNEX B GENERAL INFORMATION

1. Identification of the Responsible Testing Laboratory

| | |
|-------------------------------|--|
| Company Name: | Shenzhen Morlab Communications Technology Co., Ltd. |
| Department: | Morlab Laboratory |
| Address: | FL.3, Building A, FeiYang Science Park, No.8 LongChang Road, Block 67, BaoAn District, ShenZhen, GuangDong Province, P. R. China |
| Responsible Test Lab Manager: | Mr. Su Feng |
| Telephone: | +86 755 36698555 |
| Facsimile: | +86 755 36698525 |

2. Identification of the Responsible Testing Location

| | |
|----------|--|
| Name: | Shenzhen Morlab Communications Technology Co., Ltd. Morlab Laboratory |
| Address: | FL.3, Building A, FeiYang Science Park, No.8 LongChang Road, Block 67, BaoAn District, ShenZhen, GuangDong Province, P. R. China |

**4. List of Test Equipments**

| No. | Instrument | Type | Cal. Date | Cal. Due |
|-----|----------------------|---|-----------|----------|
| 1 | PC | Dell (Pentium IV 2.4GHz, SN:X10-23533) | (n.a) | (n.a) |
| 2 | Network Emulator | Aglient (8960, SN:10752) | 2014-2-21 | 1year |
| 3 | Network Analyzer | Agilent(E5071B ,SN:MY42404762) | 2014-8-24 | 1year |
| 4 | Voltmeter | Keithley (2000, SN:1000572) | 2014-8-24 | 1year |
| 5 | Signal Generator | Rohde&Schwarz (SMP_02) | 2014-8-24 | 1year |
| 6 | Power Amplifier | PRANA (Ap32 SV125AZ) | 2014-8-24 | 1year |
| 7 | Power Meter | Agilent (E4416A, SN:MY45102093) | 2014-5-07 | 1year |
| 8 | Power Sensor | Agilent (N8482A, SN:MY41091706) | 2014-5-07 | 1year |
| 9 | Directional coupler | Giga-tronics(SN:1829112) | 2014-8-24 | 1year |
| 10 | Probe | Satimo (SN:SN 37/08 EP80) | 2014-9-22 | 1year |
| 11 | Dielectric Probe Kit | Agilent (85033E) | 2014-8-24 | 1year |
| 12 | Phantom | Satimo (SN:SN_36_08_SAM62) | 2014-8-24 | 1year |
| 13 | Liquid | Satimo(Last Calibration: 2015-1-21) | N/A | N/A |
| 14 | Dipole 2450MHz | Satimo (SN 30/13 DIP2G450-263) | 2014-9-22 | 1year |

***** END OF REPORT *****