

Product: DJI DOCK 2

Type Designation: DOCK-02

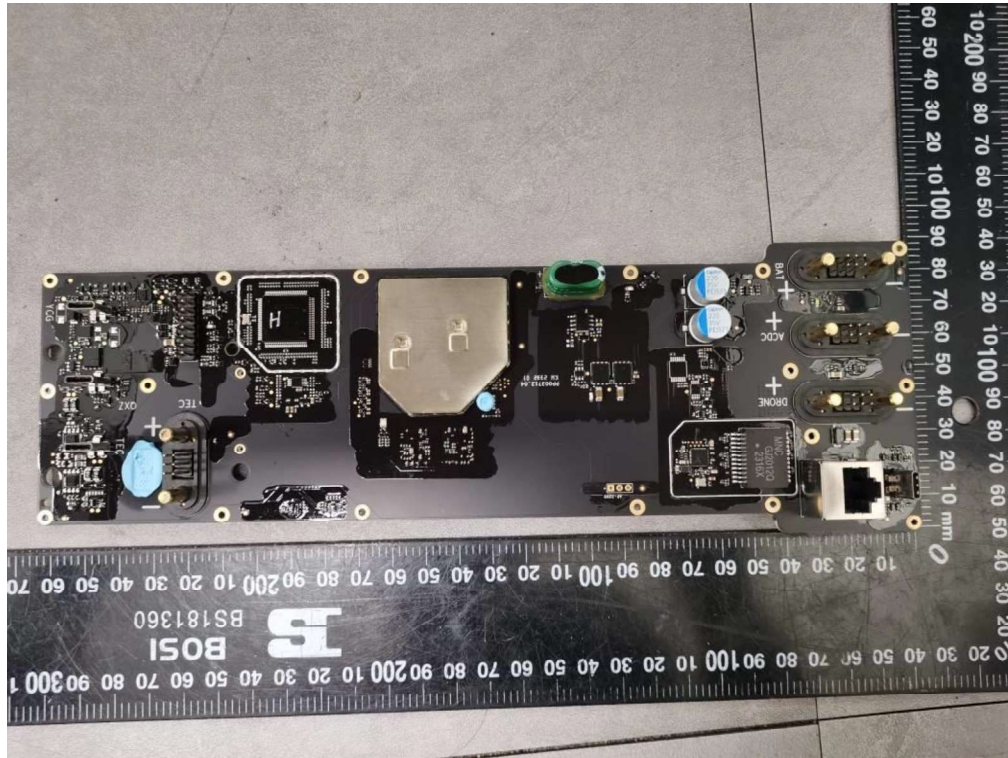


Figure 33. Core PCB

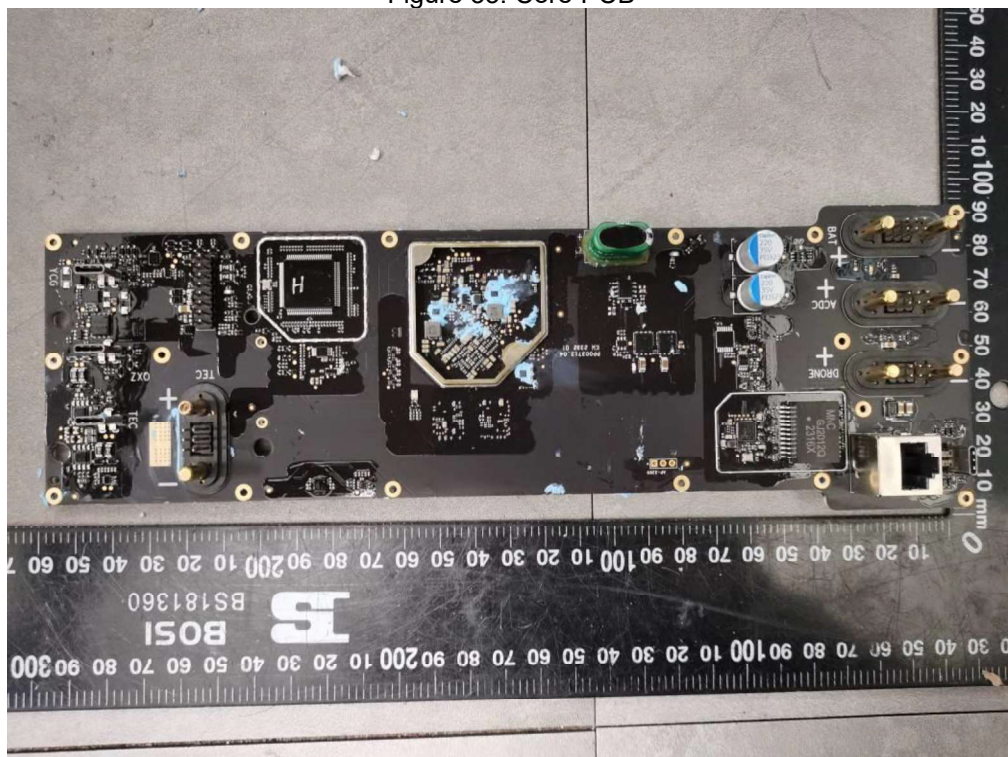


Figure 34. Core PCB (metal shield removed)

Product: DJI DOCK 2

Type Designation: DOCK-02

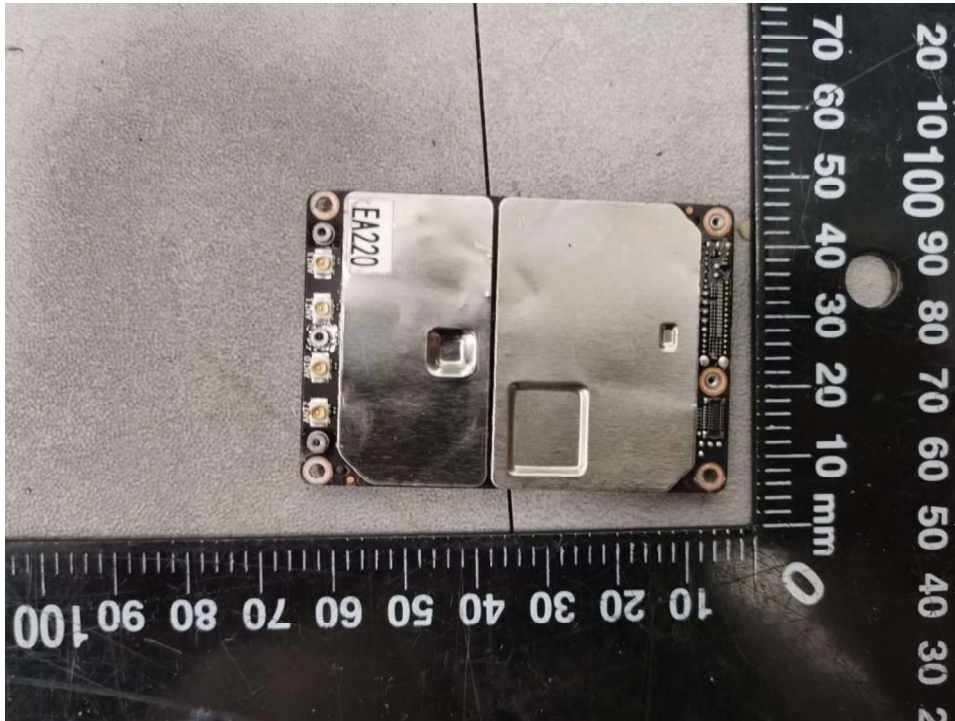


Figure 35. Core PCB

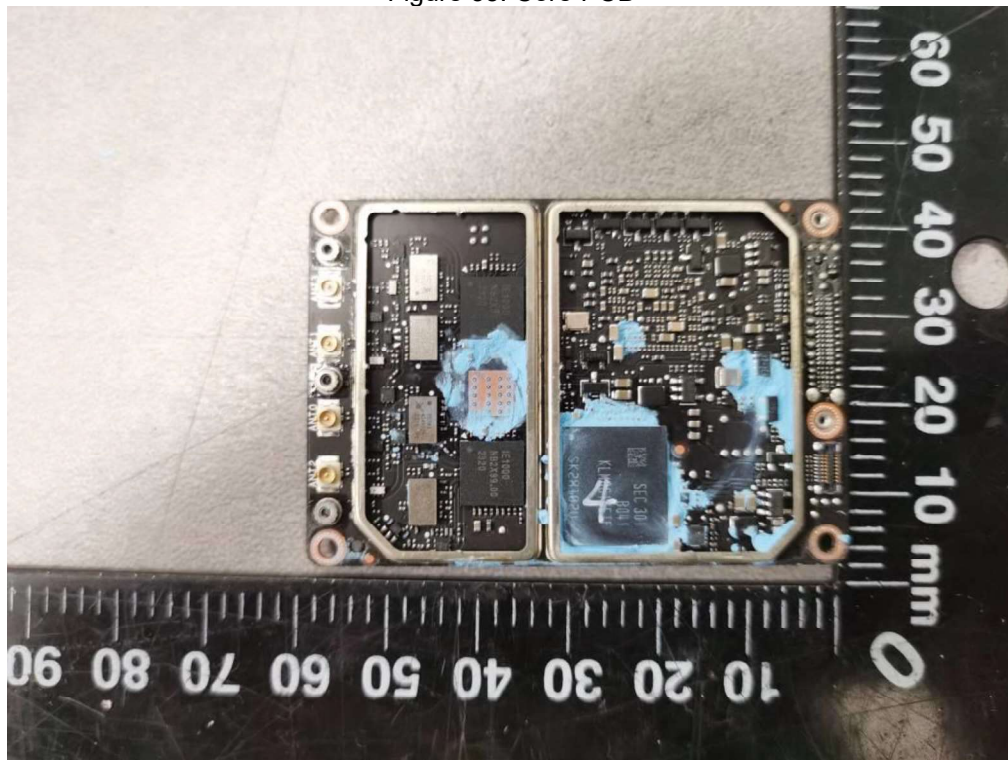


Figure 36. Core PCB (metal shield removed)



Product: DJI DOCK 2

Type Designation: DOCK-02

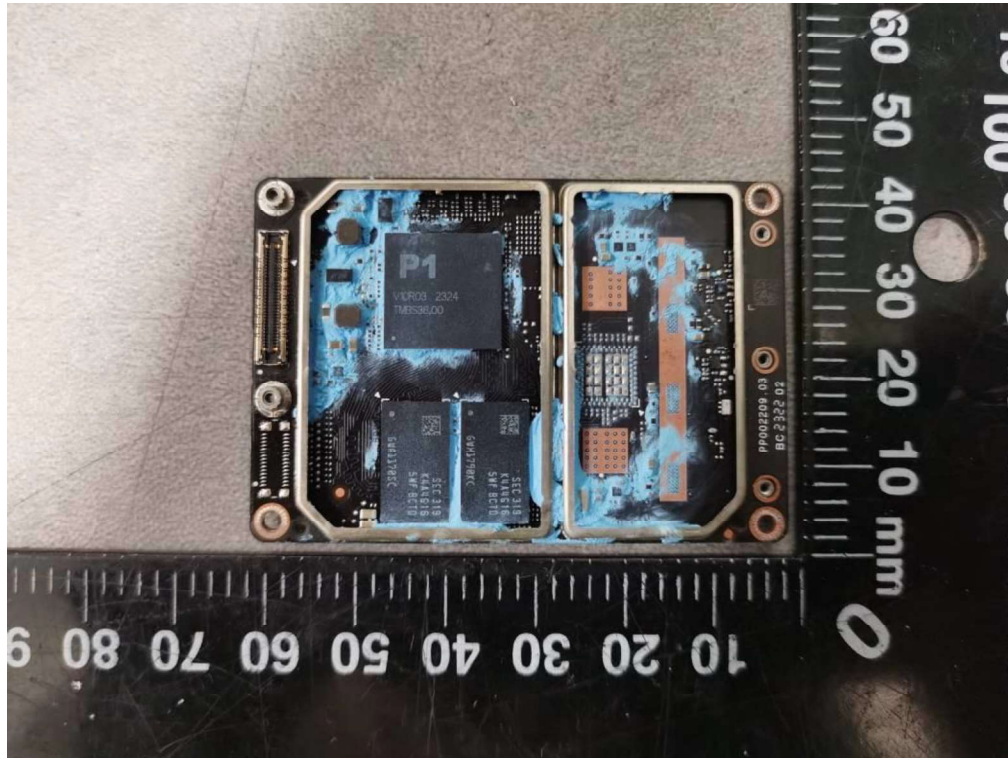


Figure 37. Core PCB (metal shield removed)



Figure 38. TEC control PCB

Product: DJI DOCK 2

Type Designation: DOCK-02

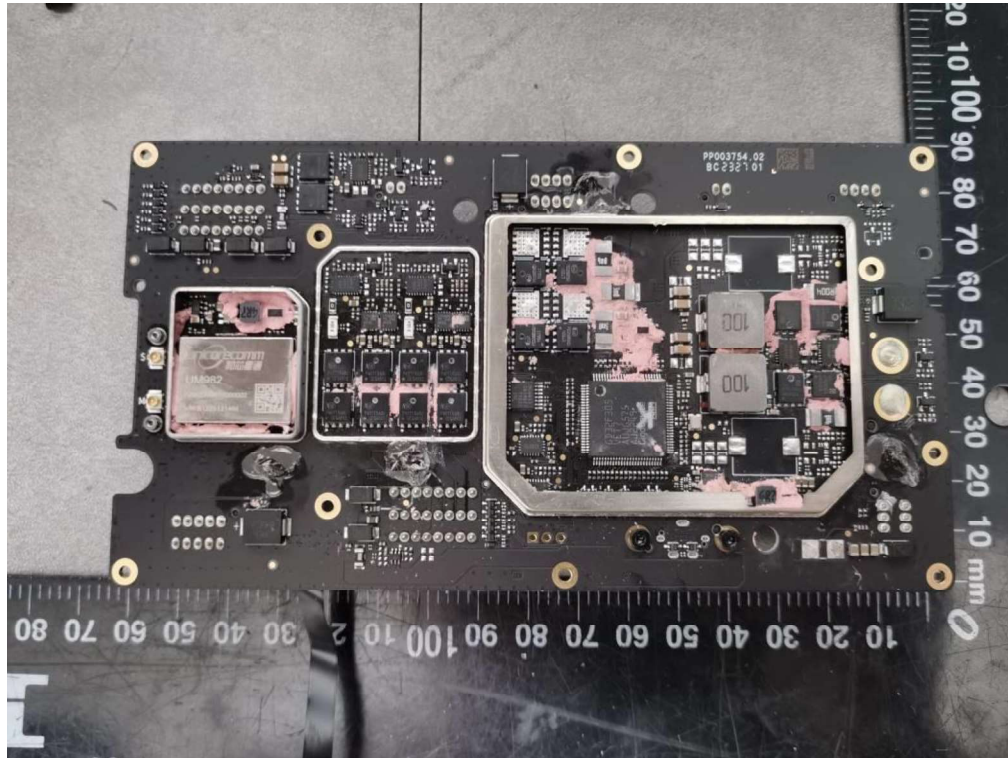


Figure 39. TEC control PCB (metal shield removed)

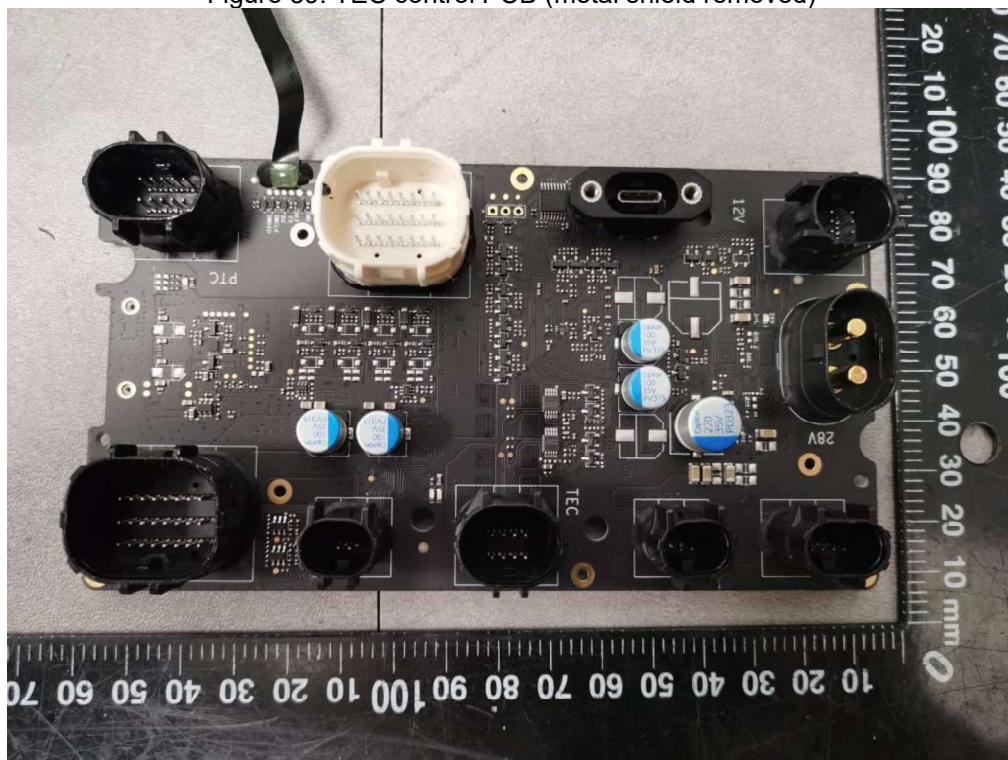


Figure 40. TEC control PCB



Product: DJI DOCK 2

Type Designation: DOCK-02

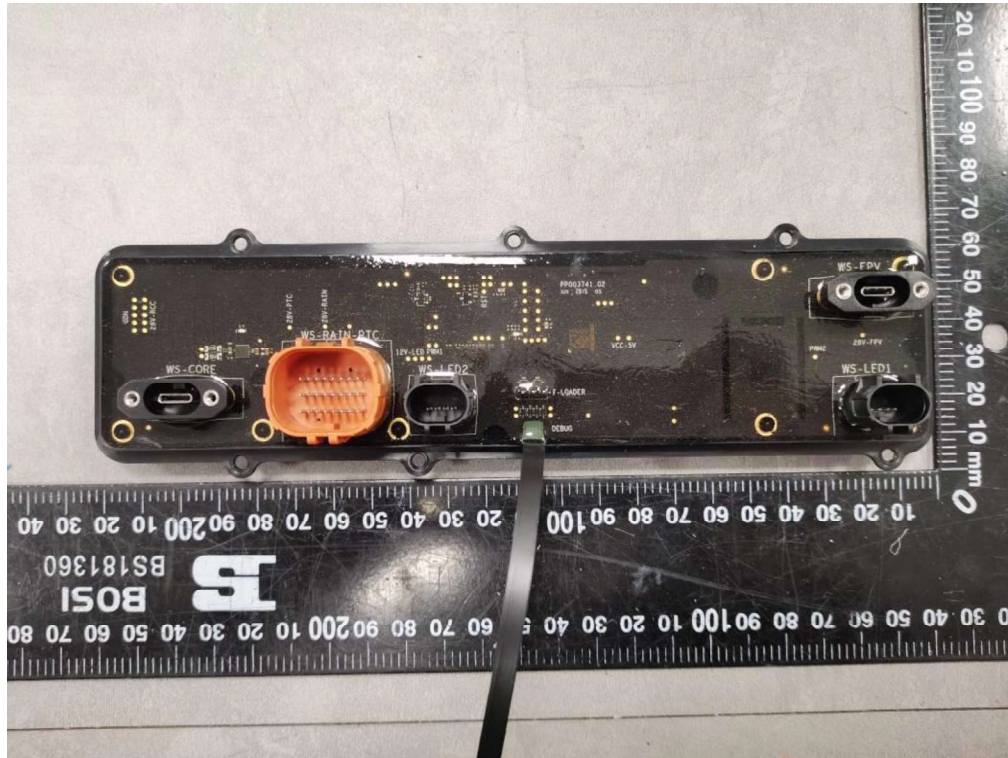


Figure 41. Left cover converter PCB with potting

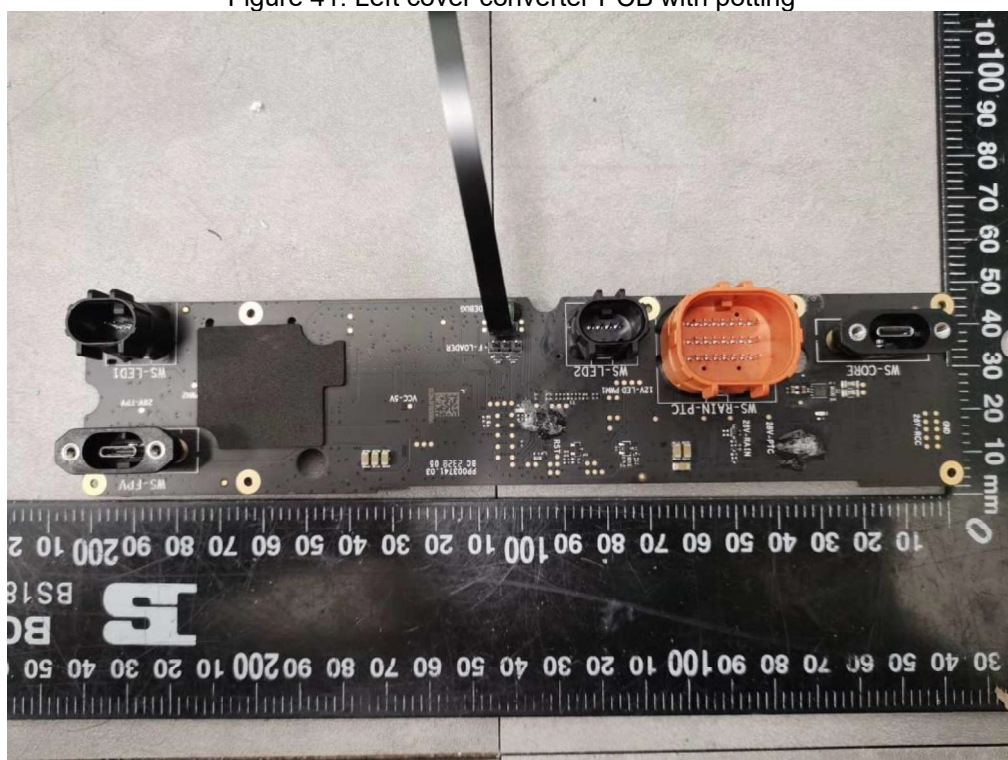


Figure 42. Left cover converter PCB with potting removed

Product: DJI DOCK 2

Type Designation: DOCK-02

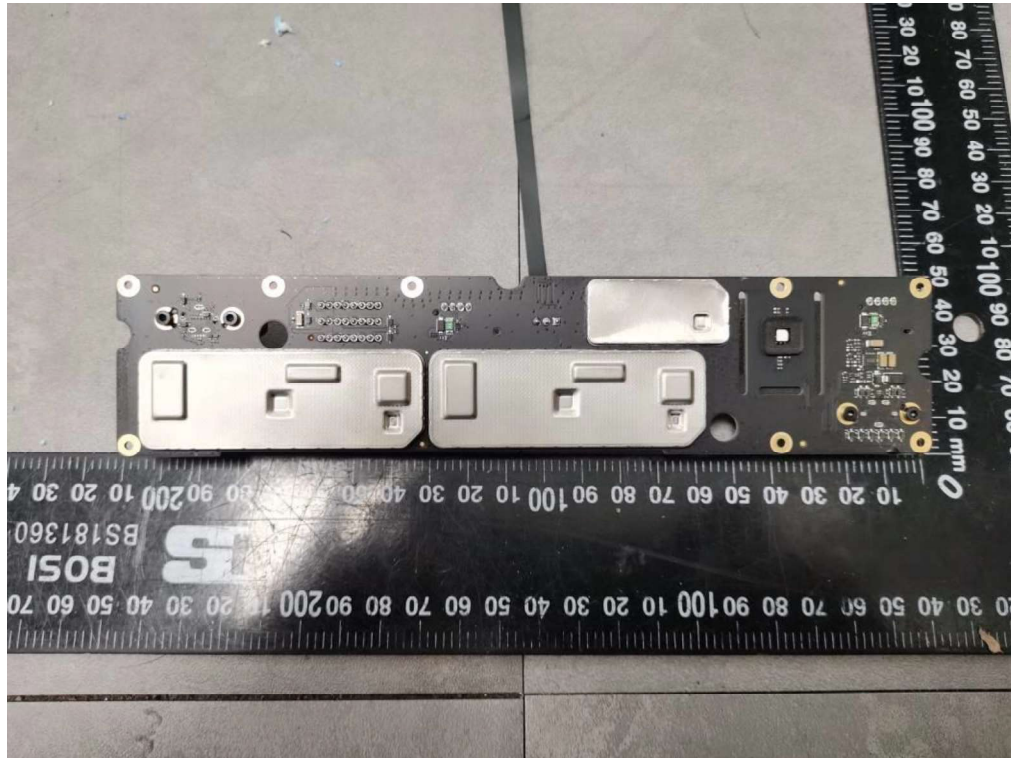


Figure 43. Left cover converter PCB

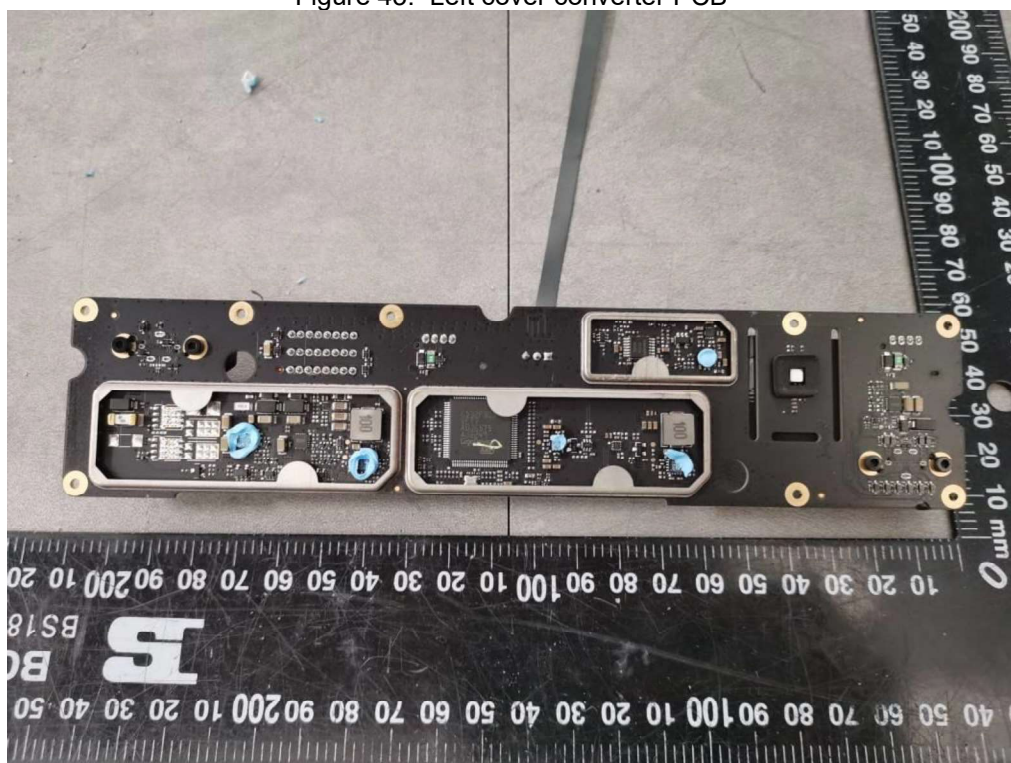


Figure 44. Left cover converter PCB (metal shield removed)



Product: DJI DOCK 2

Type Designation: DOCK-02

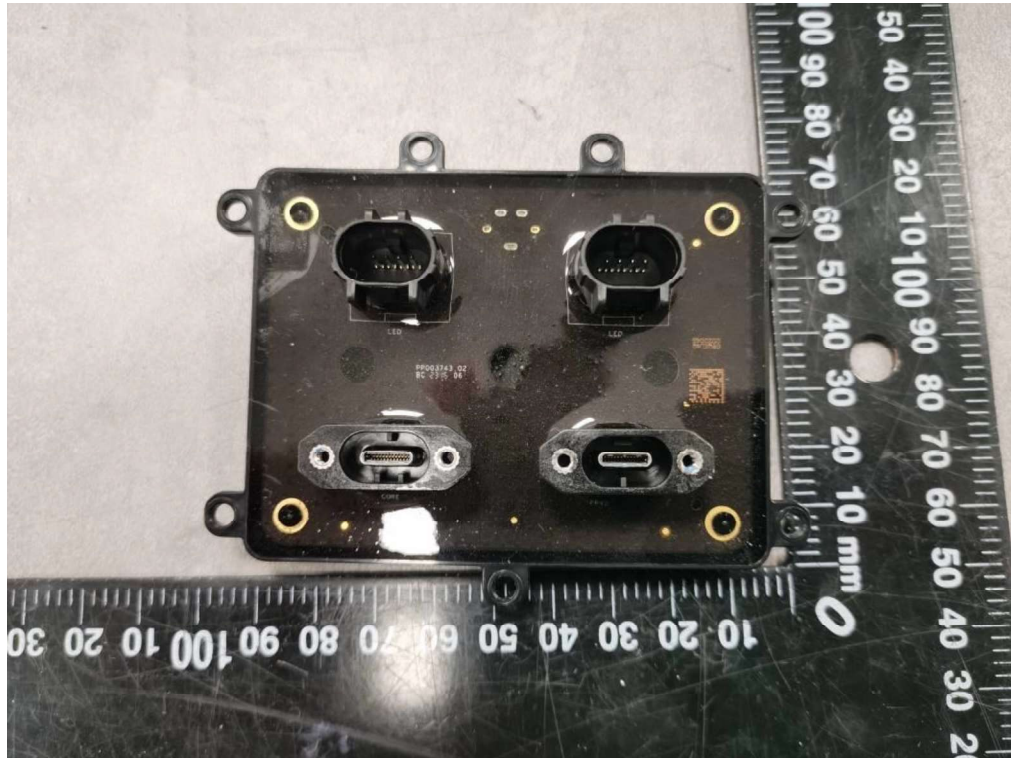


Figure 45. Right cover converter PCB with potting



Figure 46. Right cover converter PCB with potting removed

Product: DJI DOCK 2

Type Designation: DOCK-02

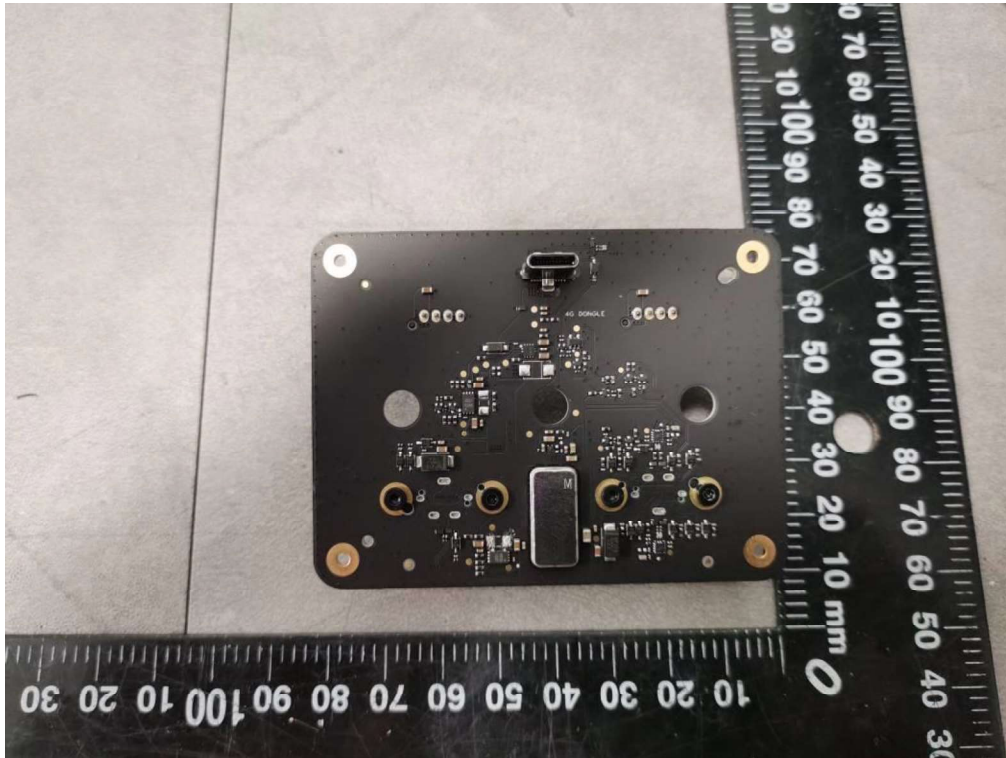


Figure 47. Right cover converter PCB

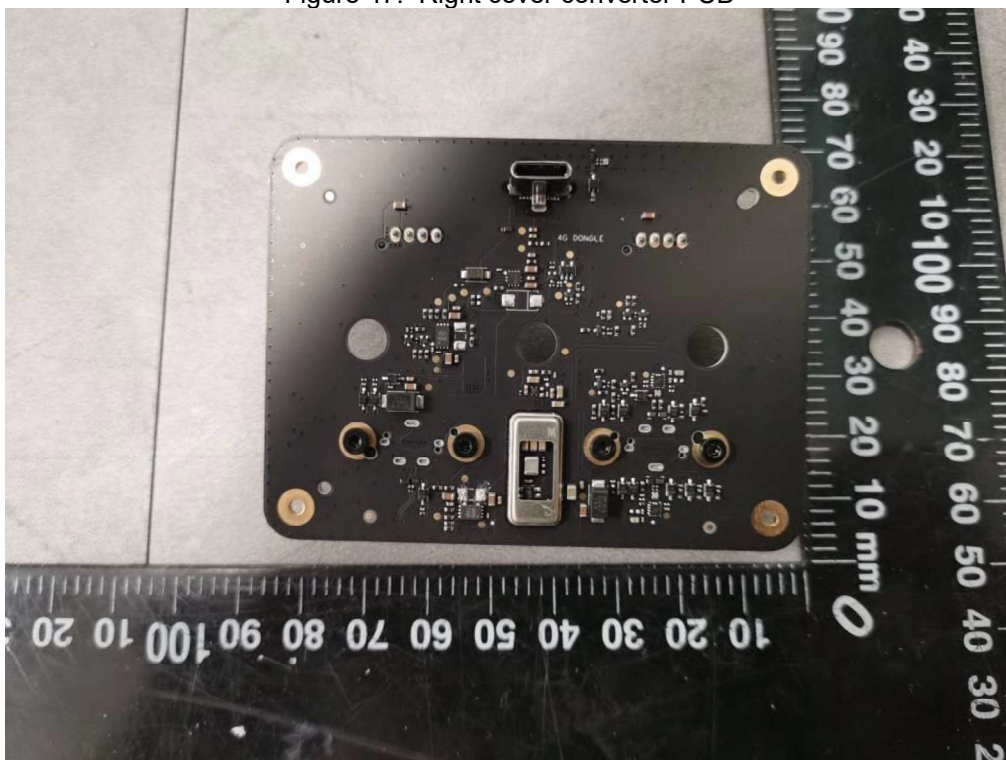


Figure 48. Right cover converter PCB(metal shield removed)



Product: DJI DOCK 2

Type Designation: DOCK-02

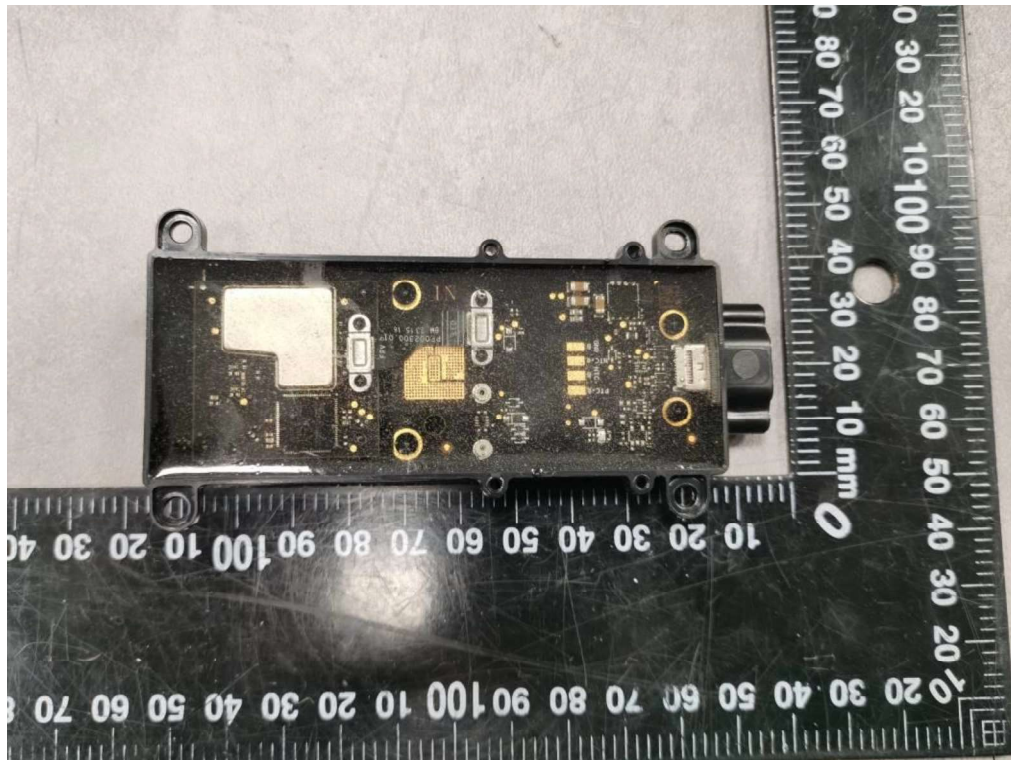


Figure 49. internal FPV PCB with potting

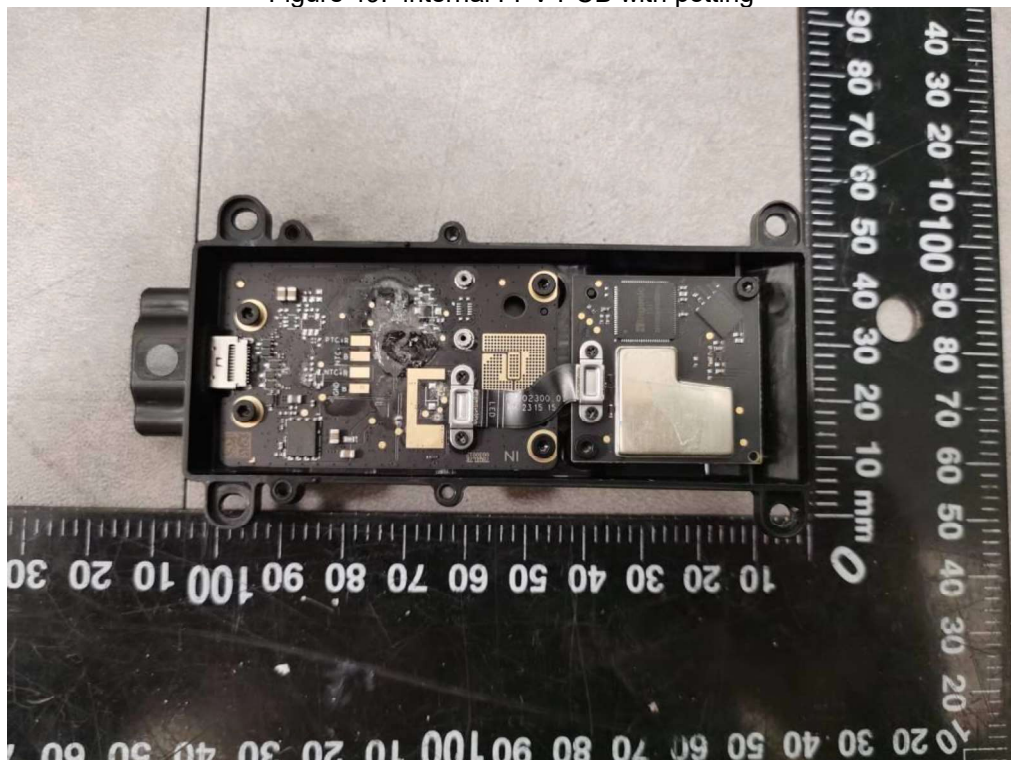


Figure 50. Internal FPV PCB with potting removed

Product: DJI DOCK 2

Type Designation: DOCK-02

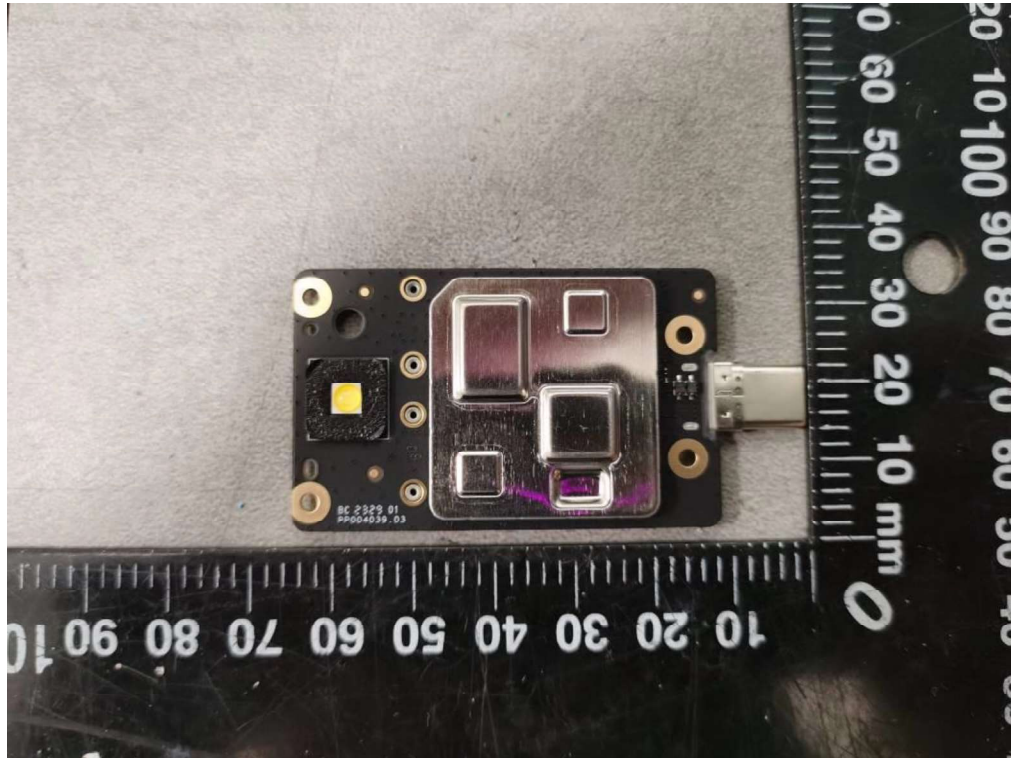


Figure 51. Internal FPV PCB



Figure 52. Internal FPV PCB (metal shield removed)



Product: DJI DOCK 2

Type Designation: DOCK-02

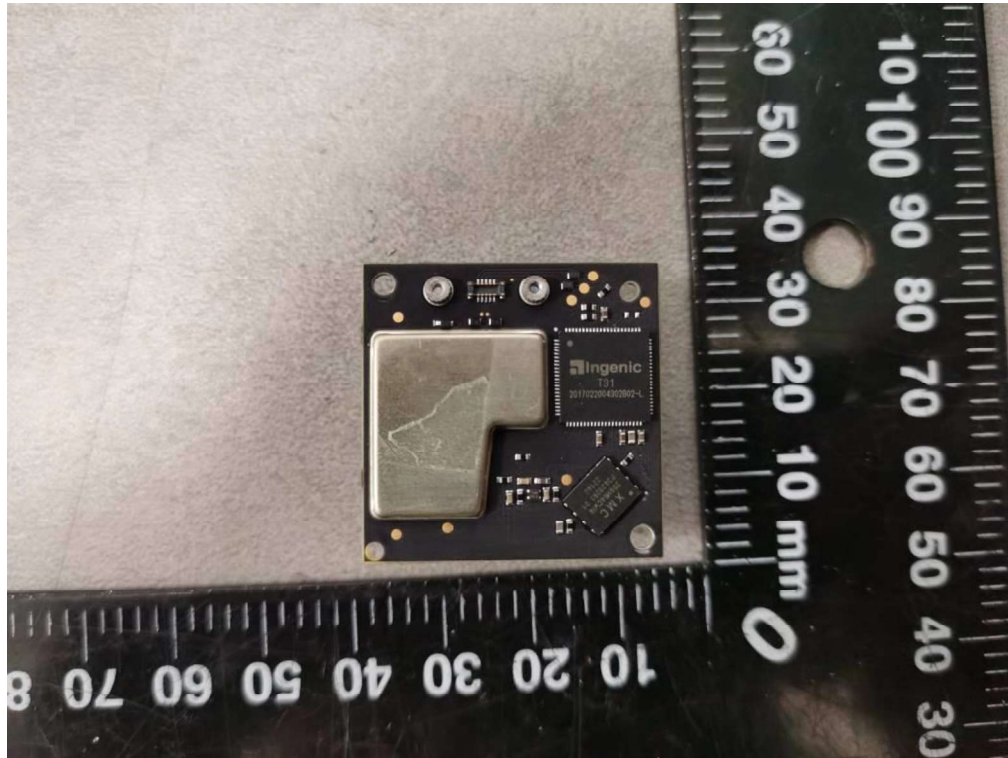


Figure 53. Internal FPV PCB

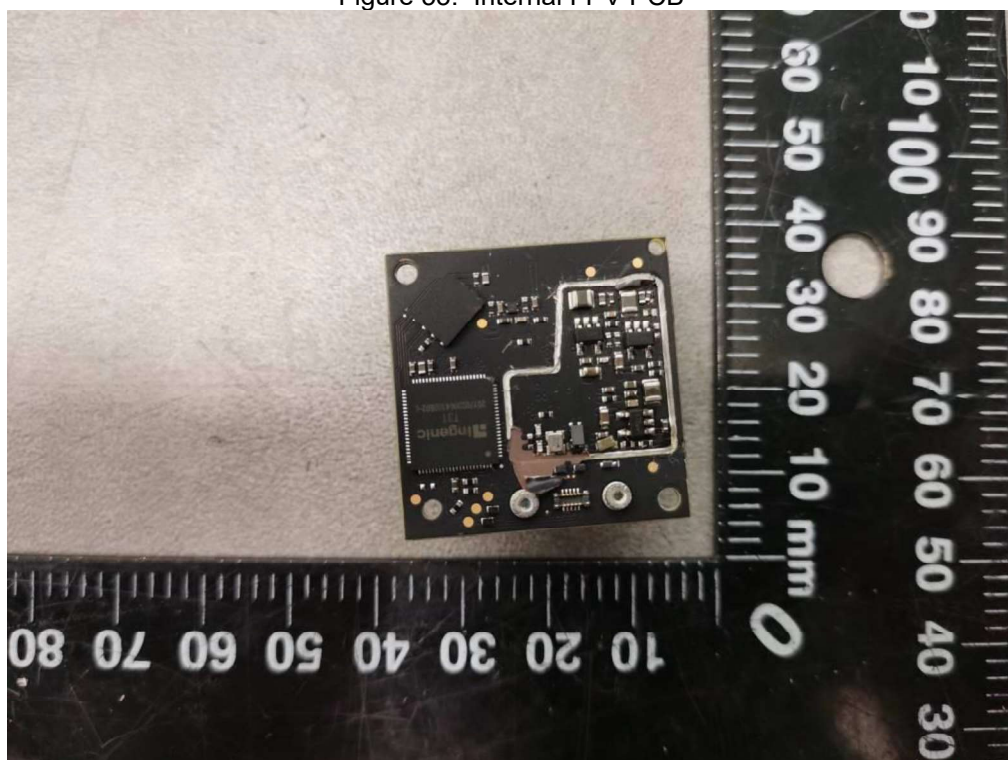


Figure 54. Internal FPV PCB (metal shield removed)

Product: DJI DOCK 2

Type Designation: DOCK-02

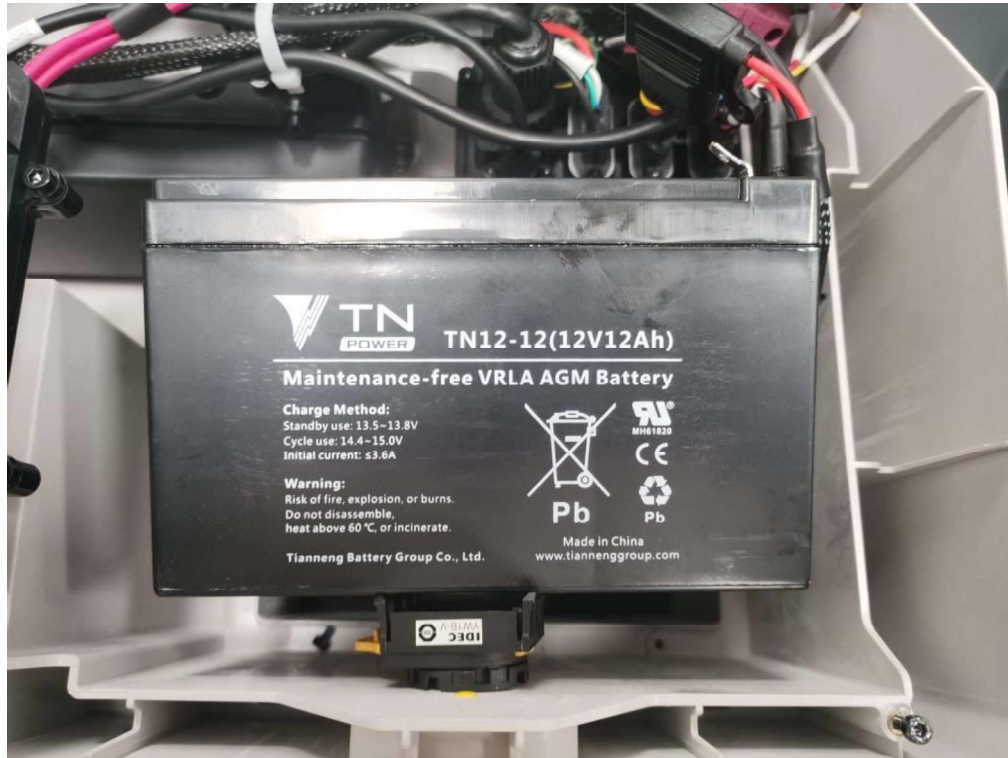


Figure 55. Lead-acid battery

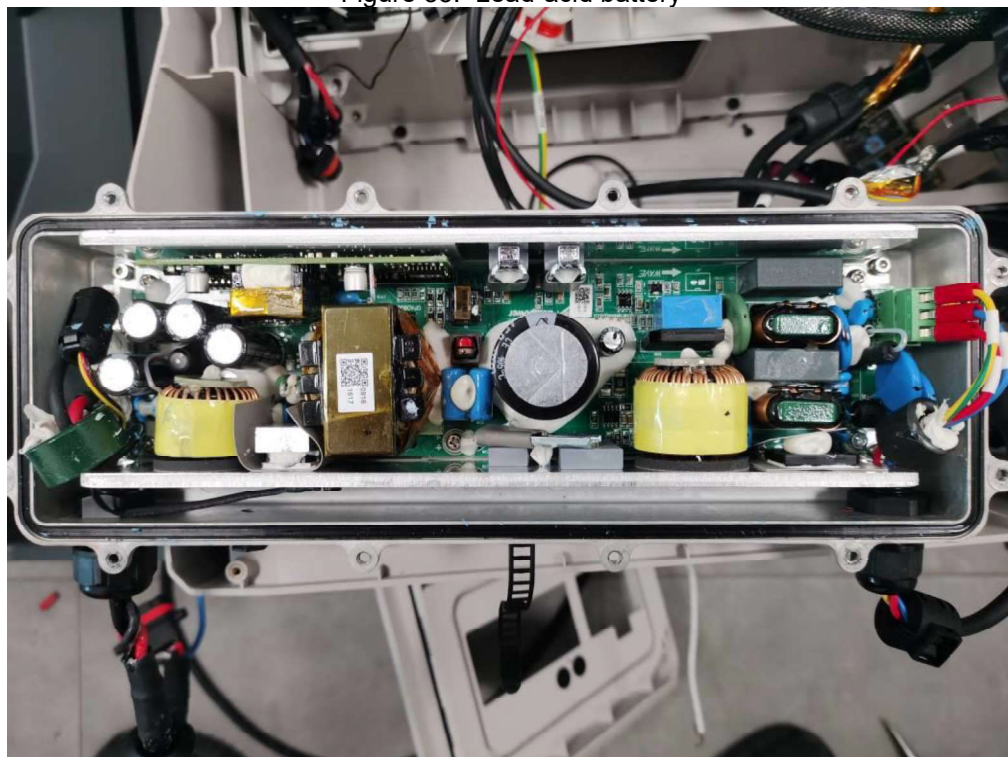


Figure 56. Internal AC/DC SMPS