


SAR EVALUATION REPORT

For

SZ DJI TECHNOLOGY CO., LTD

14th floor, West Wing, Skyworth Semiconductor Design Building NO.18 Gaoxin South 4th Ave,
Nanshan, Shenzhen, Guangdong, China

FCC ID: SS3-CS785U1706

Report Type: Original Report	Product Type: CrystalSky(Ultra 7.85 inch)
Report Number: RDG170603002-20A	
Report Date: 2017-08-04	
Reviewed By: Engineer Oscar Ye 	
Test Laboratory: Bay Area Compliance Laboratories Corp. (Kunshan) No.248 Chenghu Road,Kunshan,Jiangsu province,China Tel: +86-0512-86175000 Fax: +86-0512-88934268 www.baclcorp.com.cn	

Attestation of Test Results			
EUT Information	EUT Description	CrystalSky(Ultra 7.85 inch)	
	Tested Model	CS785U	
	FCC ID	SS3-CS785U1706	
	Serial Number	17060300220	
	Test Date	2017-08-01 ~ 2017-08-03	
MODE		Max. SAR Level(s) Reported(W/kg)	Limit
WLAN 2.4G(Chain 0)	1g Body SAR	0.16	SAR Limit = 1.6 W/kg
WLAN 2.4G(Chain 1)	1g Body SAR	0.11	
WLAN 5.2G(Chain 0)	1g Body SAR	1.18	
WLAN 5.2G(Chain 1)	1g Body SAR	0.77	
WLAN 5.8G(Chain 0)	1g Body SAR	0.34	
WLAN 5.8G(Chain 1)	1g Body SAR	0.23	
Simultaneous	1g Body SAR	WLAN 2.4G : 0.27	
	1g Body SAR	WLAN 5.2G :1.20	
	1g Body SAR	WLAN 5.8G : 0.57	
Applicable Standards	ANSI / IEEE C95.1 : 2005 IEEE Standard for Safety Levels with Respect to Human Exposure to Radio Frequency Electromagnetic Fileds,3 kHz to 300 GHz.		
	ANSI / IEEE C95.3 : 2002 IEEE Recommended Practice for Measurements and Computations of Radio Frequency Electromagnetic Fields With Respect to Human Exposure to SuchFields,100 kHz—300 GHz.		
	FCC 47 CFR part 2.1093 Radiofrequency radiation exposure evaluation: portable devices		
	IEEE1528:2013 IEEE Recommended Practice for Determining the Peak Spatial-Average Specific Absorption Rate (SAR) in the Human Head from Wireless Communications Devices: Measurement Techniques		
	IEC 62209-2:2010 Human exposure to radio frequency fields from hand-held and body-mounted wireless communication devices-Human models, instrumentation, and procedures-Part 2: Procedure to determine the specific absorption rate (SAR) for wireless communication devices used in close proximity to the human body (frequency range of 30 MHz to 6 GHz)		
	KDB procedures KDB 447498 D01 General RF Exposure Guidance v06. KDB 865664 D01 SAR Measurement 100 MHz to 6 GHz v01r04 KDB 865664 D02 RF Exposure Reporting v01r02 KDB 616217 D04 SAR for laptop and tablets v01r02 KDB 248227 D01 802 11 Wi-Fi SAR v02r02		
Note: This wireless device has been shown to be capable of compliance for localized specific absorption rate (SAR) for General Population/Uncontrolled Exposure limits specified in FCC 47 CFR part 2.1093 and has been tested in accordance with the measurement procedures specified in IEEE 1528-2013 and RF exposure KDB procedures. The results and statements contained in this report pertain only to the device(s) evaluated.			

TABLE OF CONTENTS

DOCUMENT REVISION HISTORY	4
EUT DESCRIPTION	5
TECHNICAL SPECIFICATION	5
REFERENCE, STANDARDS, AND GUIDELINES	6
SAR LIMITS	7
FACILITIES.....	8
DESCRIPTION OF TEST SYSTEM	9
EQUIPMENT LIST AND CALIBRATION	14
EQUIPMENTS LIST & CALIBRATION INFORMATION	14
SAR MEASUREMENT SYSTEM VERIFICATION	15
LIQUID VERIFICATION	15
SYSTEM ACCURACY VERIFICATION.....	17
SAR SYSTEM VALIDATION DATA	18
EUT TEST STRATEGY AND METHODOLOGY	21
TEST POSITIONS FOR DEVICE OPERATING NEXT TO A PERSON’S EAR.....	21
CHEEK/TOUCH POSITION	22
EAR/TILT POSITION	22
TEST POSITIONS FOR BODY-WORN AND OTHER CONFIGURATIONS	23
TEST DISTANCE FOR SAR EVALUATION.....	23
SAR EVALUATION PROCEDURE.....	24
TEST METHODOLOGY	24
CONDUCTED OUTPUT POWER MEASUREMENT	25
TEST PROCEDURE	25
MAXIMUM TARGET OUTPUT POWER	25
TEST RESULTS:	26
ANTENNA LOCATION:.....	27
ANTENNA DISTANCE TO EDGES	27
SAR TEST EXCLUSION FOR THE EUT EDGES CONSIDERATIONS RESULT	27
SAR MEASUREMENT RESULTS.....	30
SAR TEST DATA.....	30
SAR SIMULTANEOUS TRANSMISSION DESCRIPTION	32
VOLUME SCAN SIMULTANEOUS TRANSMISSION SAR TEST	33
SAR MEASUREMENT VARIABILITY	37
SAR PLOTS (SUMMARY OF THE HIGHEST SAR VALUES).....	38
APPENDIX A MEASUREMENT UNCERTAINTY	39
APPENDIX B EUT TEST POSITION PHOTOS	41
APPENDIX C CALIBRATION CERTIFICATES	42

DOCUMENT REVISION HISTORY

Revision Number	Report Number	Description of Revision	Date of Revision
1.0	RDG170603002-20A	Original Report	2017-08-04

EUT DESCRIPTION

This report has been prepared on behalf of **SZ DJI TECHNOLOGY CO., LTD** and their product **CrystalSky(Ultra 7.85 inch)**, Model: **CS785U**, FCC ID: **SS3-CS785U1706** or the EUT (Equipment under Test) as referred to in the rest of this report.

**All measurement and test data in this report was gathered from production sample serial number: 17060300220 (Assigned by BACL, Kunshan).The EUT supplied by the applicant was received on 2017-06-03.*

Technical Specification

Device type:	Portable
Exposure Category:	Population / Uncontrolled
Antenna Type(s):	Internal Antenna
Proximity sensor for SAR reduction:	None
Operation Mode :	WLAN
Frequency Band:	WLAN 2.4G: 2412 MHz-2462 MHz
	WLAN 5.2G: 5180 MHz-5240 MHz
	WLAN 5.8G: 5745 MHz-5825 MHz
Conducted RF Power:	WLAN 2.4G: 11.96 dBm
	WLAN 5.2G: 10.45 dBm
	WLAN 5.8G: 8.17 dBm
Dimensions (L*W*H):	20.8 cm (L) × 14.8 cm (W) × 3.5 cm (H)
Power Source:	7.6 VDC Rechargeable Battery
Normal Operation:	Body Supported

REFERENCE, STANDARDS, AND GUIDELINES

FCC:

The Report and Order requires routine SAR evaluation prior to equipment authorization of portable transmitter devices, including portable telephones. For consumer products, the applicable limit is 1.6 mW/g as recommended by the ANSI/IEEE standard C95.1-1992 [6] for an uncontrolled environment (Paragraph 65). According to the Supplement C of OET Bulletin 65 "Evaluating Compliance with FCC Guide-lines for Human Exposure to Radio frequency Electromagnetic Fields", released on Jun 29, 2001 by the FCC, the device should be evaluated at maximum output power (radiated from the antenna) under "worst-case" conditions for normal or intended use, incorporating normal antenna operating positions, device peak performance frequencies and positions for maximum RF energy coupling.

This report describes the methodology and results of experiments performed on wireless data terminal. The objective was to determine if there is RF radiation and if radiation is found, what is the extent of radiation with respect to safety limits. SAR (Specific Absorption Rate) is the measure of RF exposure determined by the amount of RF energy absorbed by human body (or its parts) – to determine how the RF energy couples to the body or head which is a primary health concern for body worn devices. The limit below which the exposure to RF is considered safe by regulatory bodies in North America is 1.6 mW/g average over 1 gram of tissue mass.

CE:

The order requires routine SAR evaluation prior to equipment authorization of portable transmitter devices, including portable telephones. For consumer products, the applicable limit is 2 mW/g as recommended by EN62209-1 for an uncontrolled environment. According to the Standard, the device should be evaluated at maximum output power (radiated from the antenna) under "worst-case" conditions for normal or intended use, incorporating normal antenna operating positions, device peak performance frequencies and positions for maximum RF energy coupling.

This report describes the methodology and results of experiments performed on wireless data terminal. The objective was to determine if there is RF radiation and if radiation is found, what is the extent of radiation with respect to safety limits. SAR (Specific Absorption Rate) is the measure of RF exposure determined by the amount of RF energy absorbed by human body (or its parts) – to determine how the RF energy couples to the body or head which is a primary health concern for body worn devices. The limit below which the exposure to RF is considered safe by regulatory bodies in Europe is 2 mW/g average over 10 gram of tissue mass.

The test configurations were laid out on a specially designed test fixture to ensure the reproducibility of measurements. Each configuration was scanned for SAR. Analysis of each scan was carried out to characterize the above effects in the device.

SAR Limits**FCC Limit**

EXPOSURE LIMITS	SAR (W/kg)	
	(General Population / Uncontrolled Exposure Environment)	(Occupational / Controlled Exposure Environment)
Spatial Average (averaged over the whole body)	0.08	0.4
Spatial Peak (averaged over any 1 g of tissue)	1.60	8.0
Spatial Peak (hands/wrists/feet/ankles averaged over 10 g)	4.0	20.0

CE Limit

EXPOSURE LIMITS	SAR (W/kg)	
	(General Population / Uncontrolled Exposure Environment)	(Occupational / Controlled Exposure Environment)
Spatial Average (averaged over the whole body)	0.08	0.4
Spatial Peak (averaged over any 10 g of tissue)	2.0	10
Spatial Peak (hands/wrists/feet/ankles averaged over 10 g)	4.0	20.0

Population/Uncontrolled Environments are defined as locations where there is the exposure of individual who have no knowledge or control of their exposure.

Occupational/Controlled Environments are defined as locations where there is exposure that may be incurred by people who are aware of the potential for exposure (i.e. as a result of employment or occupation).

General Population/Uncontrolled environments 1g Spatial Peak SAR limit 1.6 W/kg applied to the EUT.

FACILITIES

The test site used by Bay Area Compliance Laboratories Corp. (Kunshan) to collect test data is located on No.248 Chenghu Road,Kunshan,Jiangsu province,China.

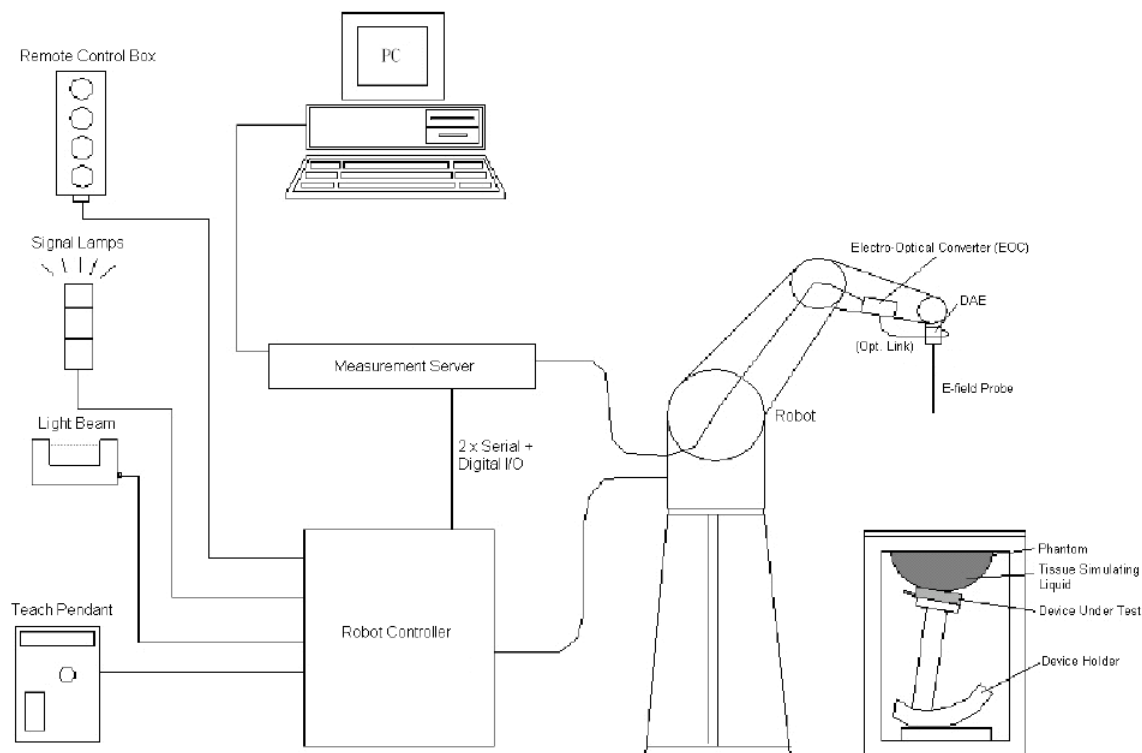
DESCRIPTION OF TEST SYSTEM

These measurements were performed with the automated near-field scanning system DASY5 from Schmid & Partner Engineering AG (SPEAG) which is the Fifth generation of the system shown in the figure hereinafter:



DASY5 System Description

The DASY5 system for performing compliance tests consists of the following items:



- A standard high precision 6-axis robot (Staubli TX=RX family) with controller, teach pendant and software. An arm extension for accommodating the data acquisition electronics (DAE).
- An isotropic field probe optimized and calibrated for the targeted measurement.
- A data acquisition electronics (DAE) which performs the signal application, signal multiplexing, AD-conversion, offset measurements, mechanical surface detection, collision detection, etc. The unit is battery powered with standard or rechargeable batteries. The signal is optically transmitted to the EOC.
- The Electro-optical converter (EOC) performs the conversion from optical to electrical signals for the digital communication to the DAE. To use optical surface detection, a special version of the EOC is required. The EOC signal is transmitted to the measurement server.
- The function of the measurement server is to perform the time critical tasks such as signal filtering, control of the robot operation and fast movement interrupts.
- The Light Beam used is for probe alignment. This improves the (absolute) accuracy of the probe positioning.
- A computer running Win7 professional operating system and the DASY52 software.
- Remote control and teach pendant as well as additional circuitry for robot safety such as warning lamps, etc.
- The phantom, the device holder and other accessories according to the targeted measurement.

DASY5 Measurement Server

The DASY5 measurement server is based on a PC/104 CPU board with a 400MHz Intel ULV Celeron, 128MB chip-disk and 128MB RAM. The necessary circuits for communication with the DAE4 (or DAE3) electronics box, as well as the 16 bit AD-converter system for optical detection and digital I/O interface are contained on the DASY5 I/O board, which is directly connected to the PC/104 bus of the CPU board.



The measurement server performs all real-time data evaluation of field measurements and surface detection, controls robot movements and handles safety operation. The PC operating system cannot interfere with these time critical processes. All connections are supervised by a watchdog, and disconnection of any of the cables to the measurement server will automatically disarm the robot and disable all program-controlled robot movements. Furthermore, the measurement server is equipped with an expansion port which is reserved for future applications. Please note that this expansion port does not have a standardized point out, and therefore only devices provided by SPEAG can be connected. Devices from any other supplier could seriously damage the measurement server.

Data Acquisition Electronics

The data acquisition electronics (DAE4) consist of a highly sensitive electrometer-grade preamplifier with auto-zeroing, a channel and gain-switching multiplexer, a fast 16 bit AD-converter and a command decoder with a control logic unit. Transmission to the measurement server is accomplished through an optical downlink for data and status information, as well as an optical uplink for commands and the clock.

The mechanical probe mounting device includes two different sensor systems for frontal and sideways probe contacts. They are used for mechanical surface detection and probe collision detection.

The input impedance of both the DAE4 as well as of the DAE3 box is 200M Ω ; the inputs are symmetrical and floating. Common mode rejection is above 80 dB.

EX3DV4 E-Field Probes

Frequency	10 MHz to > 6 GHz Linearity: ± 0.2 dB (30 MHz to 6 GHz)
Directivity	± 0.3 dB in TSL (rotation around probe axis) ± 0.5 dB in TSL (rotation normal to probe axis)
Dynamic Range	10 μ W/g to > 100 mW/g Linearity: ± 0.2 dB (noise: typically < 1 μ W/g)
Dimensions	Overall length: 337 mm (Tip: 20 mm) Tip diameter: 2.5 mm (Body: 12 mm) Typical distance from probe tip to dipole centers: 1 mm
Application	High precision dosimetric measurements in any exposure scenario (e.g., very strong gradient fields); the only probe that enables compliance testing for frequencies up to 6 GHz with precision of better 30%.
Compatibility	DASY3, DASY4, DASY52 SAR and higher, EASY4/MRI

SAM Twin Phantom

The SAM twin phantom is a fiberglass shell phantom with 2mm shell thickness (except the ear region, where shell thickness

increases to 6 mm). The phantom has three measurement areas:

- _ Left hand
- _ Right hand
- _ Flat phantom

The phantom table for the DASY systems based on the TX90XL and RX160L robots have the size of 100 x 50 x 85 cm (L x W x H).

The phantom table for the compact DASY systems based on the RX60L robot have the size of 100 x 75 x 91 cm (L x W x H); these tables are reinforced for mounting of the robot onto the table.

For easy dislocation these tables have fork lift cut outs at the bottom.

The bottom plate contains three pairs of bolts for locking the device holder. The device holder positions are adjusted to the standard measurement positions in the three sections. Only one device holder is necessary if two phantoms are used (e.g., for different liquids)

A white cover is provided to cover the phantom during off-periods to prevent water evaporation and changes in the liquid parameters. Free space scans of devices on top of this phantom cover are possible. Three reference marks are provided on the phantom counter. These reference marks are used to teach the absolute phantom position relative to the robot.



Triple Flat Phantom

The SAM twin phantom is a fiberglass shell phantom with 2mm(± 0.2 mm) shell thickness . The phantom shell is compatible with SPEAG tissue simulating liquids (sugar and oil based). Use of other liquids may render the phantom warranty void (see note or consult SPEAG support).

The phantom table for the DASY systems based on the TX90XL and RX160L robots have the size of 100 x 50 x 85 cm (L x W x H).

The phantom table for the compact DASY systems based on the RX60L robot have the size of 100 x 75 x 91 cm (L x W x H);

these tables are reinforced for mounting of the robot onto the table.

For easy dislocation these tables have fork lift cut outs at the bottom.

The bottom plate contains three pairs of bolts for locking the device holder. The device holder positions are adjusted to the standard measurement positions in the three sections. Only one device holder is necessary if two phantoms are used (e.g., for different liquids)



A white cover is provided to cover the phantom during off-periods to prevent water evaporation and changes in the liquid parameters. Free space scans of devices on top of this phantom cover are possible. Three reference marks are provided on the phantom counter. These reference marks are used to teach the absolute phantom position relative to the robot.

Robots

The DASY5 system uses the high precision industrial robots TX90XL from Staubli SA (France). The TX robot family is the successor of the well known RX robot family and offers the same features important for our application:

- High precision (repeatability 0.02mm)
- High reliability (industrial design)
- Low maintenance costs (virtually maintenance free due to direct drive gears; no belt drives)
- Jerk-free straight movements (brushless synchrony motors; no stepper motors)
- Low ELF interference (motor control fields shielded via the closed metallic construction shields)

The above mentioned robots are controlled by the Staubli CS8c robot controllers. All information regarding the use and maintenance of the robot arm and the robot controller is contained on the CDs delivered along with the robot. Paper manuals are available upon request direct from Staubli.

Area Scans

Area scans are defined prior to the measurement process being executed with a user defined variable spacing between each measurement point (integral) allowing low uncertainty measurements to be conducted. Scans defined for FCC applications utilize a 15mm 2 step integral, with 1.5mm interpolation used to locate the peak SAR area used for zoom scan assessments.

Where the system identifies multiple SAR peaks (which are within 25% of peak value) the system will provide the user with the option of assessing each peak location individually for zoom scan averaging.

Zoom Scan (Cube Scan Averaging)

The averaging zoom scan volume utilized in the DASY5 software is in the shape of a cube and the side dimension of a 1 g or 10 g mass is dependent on the density of the liquid representing the simulated tissue. A density of 1000 kg/m³ is used to represent the head and body tissue density and not the phantom liquid density, in order to be consistent with the definition of the liquid dielectric properties, i.e. the side length of the 1g cube is 10mm, with the side length of the 10g cube is 21.5mm.

When the cube intersects with the surface of the phantom, it is oriented so that 3 vertices touch the surface of the shell or the center of a face is tangent to the surface. The face of the cube closest to the surface is modified in order to conform to the tangent surface.

The zoom scan integer steps can be user defined so as to reduce uncertainty, but normal practice for typical test applications (including FCC) utilize a physical step of 7 x 7 x 7 (5mmx5mmx5mm) providing a volume of 30 mm in the X & Y & Z axis.

Tissue Dielectric Parameters for Head and Body Phantoms

The head tissue dielectric parameters recommended by the IEEE SCC-34/SC-2 in P1528 have been incorporated in the following table. These head parameters are derived from planar layer models simulating the highest expected SAR for the dielectric properties and tissue thickness variations in a human head. Other head and body tissue parameters that have not been specified in P1528 are derived from the tissue dielectric parameters computed from the 4-Cole-Cole equations described in Reference [12] and extrapolated according to the head parameters specified in P1528.

Recommended Tissue Dielectric Parameters for Head and Body

Frequency (MHz)	Head Tissue		Body Tissue	
	ϵ_r	σ (S/m)	ϵ_r	σ (S/m)
150	52.3	0.76	61.9	0.80
300	45.3	0.87	58.2	0.92
450	43.5	0.87	56.7	0.94
835	41.5	0.90	55.2	0.97
900	41.5	0.97	55.0	1.05
915	41.5	0.98	55.0	1.06
1450	40.5	1.20	54.0	1.30
1610	40.3	1.29	53.8	1.40
1800-2000	40.0	1.40	53.3	1.52
2450	39.2	1.80	52.7	1.95
3000	38.5	2.40	52.0	2.73
5800	35.3	5.27	48.2	6.00

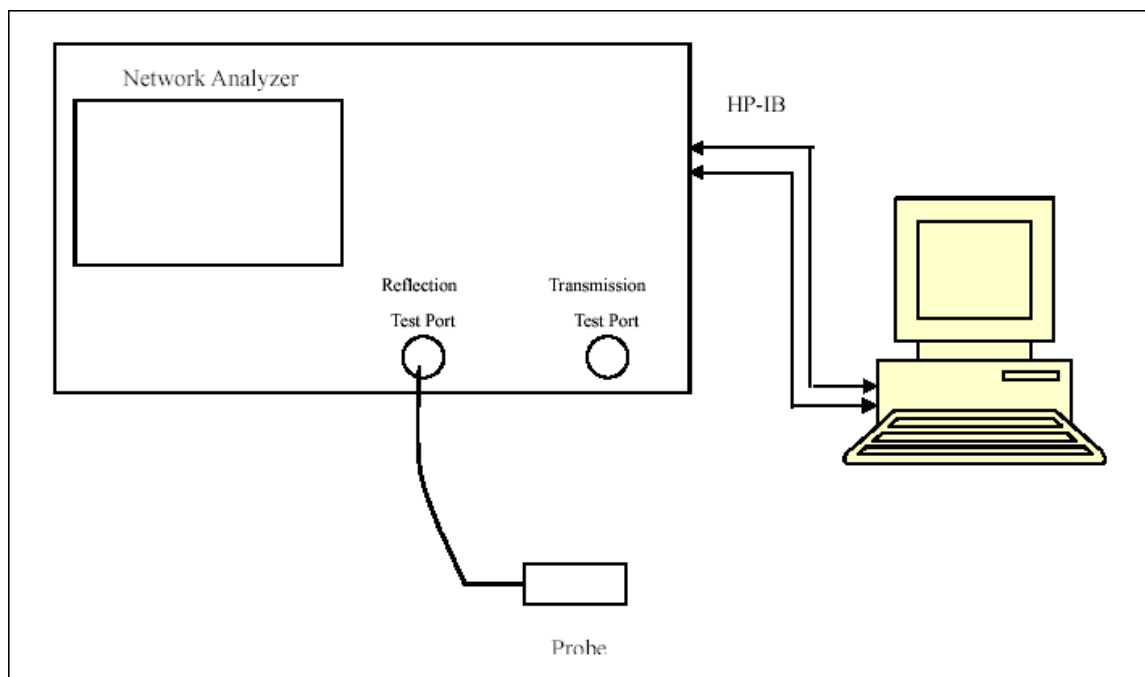
EQUIPMENT LIST AND CALIBRATION

Equipments List & Calibration Information

Equipment	Model	S/N	Calibration Date	Calibration Due Date
Robot	RX90	D03688	N/A	N/A
DASY5 Test Software	DASY52.8	N/A	N/A	N/A
DASY5 Measurement Server	DASY5 4.5.12	1567	N/A	N/A
Data Acquisition Electronics	DAE3	379	2016/10/04	2017/10/3
E-Field Probe	EX3DV4	7441	2016/11/15	2017/11/14
Dipole,2450MHz	D2450V2	970	2015/7/8	2018/7/7
Dipole,5GHz	D5GHzV2	1245	2016/11/7	2019/11/6
Mounting Device	MD4HHTV5	BJPCTC0152	N/A	N/A
Triple Flat Phantom 5.1C	QD 000 P51 CA	1130	N/A	N/A
Simulated Tissue 2450 MHz Body	TS-2450-B	1708245002	Each Time	/
Simulated Tissue 5250 MHz Body	TS-5250-B	1708525002	Each Time	/
Simulated Tissue 5800 MHz Body	TS-5800-B	1708580002	Each Time	/
Network Analyzer	8753B	2625A00809	2016/10/6	2017/10/5
S-Parameter Test Set	85047A	3033A02428	2016/10/6	2017/10/5
Dielectric probe kit	85070B	US33020324	N/A	N/A
Signal Generator	SMBV100A	261558	2017/7/22	2018/7/22
Power Meter	N1912A	MY5000492	2016/11/17	2017/11/16
Power Meter Sensor	N1921A	MY54210024	2016/11/17	2017/11/16
Power Amplifier	10S1G4M1	18060	N/A	N/A
Power Amplifier	ZVA-183-S+	857001418	N/A	N/A
Directional Coupler	488Z	N/A	N/A	N/A
Attenuator	20dB, 100W	N/A	N/A	N/A
Attenuator	3dB, 150W	N/A	N/A	N/A

SAR MEASUREMENT SYSTEM VERIFICATION

Liquid Verification



Liquid Verification Setup Block Diagram

Liquid Verification Results

Frequency (MHz)	Liquid Type	Liquid Parameter		Target Value		Delta (%)		Tolerance (%)
		ϵ_r	σ (S/m)	ϵ_r	σ (S/m)	$\Delta\epsilon_r$	$\Delta\sigma$ (S/m)	
5745	Simulated Tissue 5800 MHz Body	49.651	5.766	48.27	5.94	2.85	-2.86	± 5
5785	Simulated Tissue 5800 MHz Body	49.395	5.878	48.22	5.98	2.44	-1.75	± 5
5800	Simulated Tissue 5800 MHz Body	49.179	5.961	48.20	6.00	2.03	-0.65	± 5
5825	Simulated Tissue 5800 MHz Body	49.009	5.976	48.20	6.00	1.68	-0.4	± 5

*Liquid Verification above was performed on 2017-08-01.

Frequency (MHz)	Liquid Type	Liquid Parameter		Target Value		Delta (%)		Tolerance (%)
		ϵ_r	σ (S/m)	ϵ_r	σ (S/m)	$\Delta\epsilon_r$	$\Delta\sigma$ (S/m)	
5180	Simulated Tissue 5250 MHz Body	50.161	5.125	49.04	5.28	2.28	-2.86	± 5
5200	Simulated Tissue 5250 MHz Body	50.082	5.216	49.01	5.30	2.18	-1.57	± 5
5240	Simulated Tissue 5250 MHz Body	49.965	5.273	48.96	5.35	2.05	-1.37	± 5
5250	Simulated Tissue 5250 MHz Body	49.876	5.312	48.95	5.36	1.9	-0.85	± 5

*Liquid Verification above was performed on 2017-08-02.

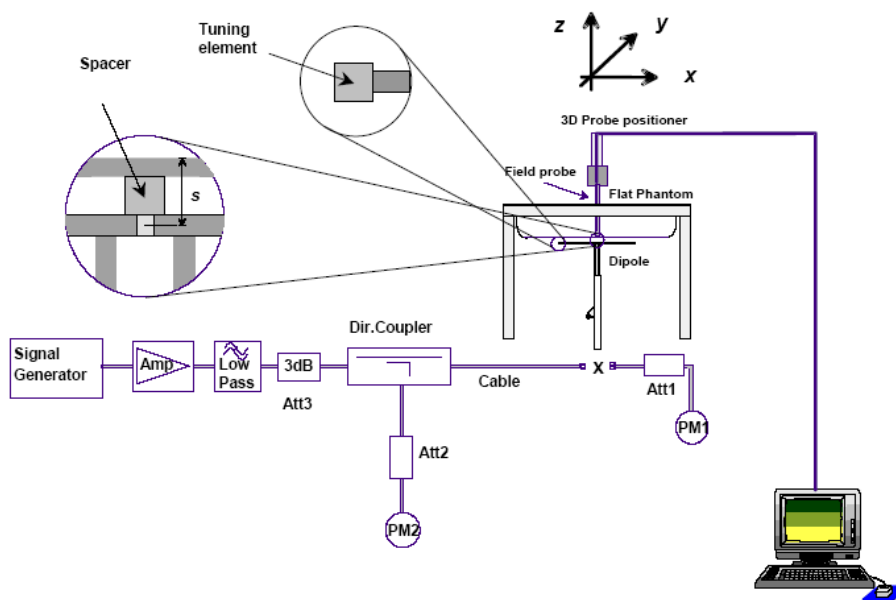
Frequency (MHz)	Liquid Type	Liquid Parameter		Target Value		Delta (%)		Tolerance (%)
		ϵ_r	σ (S/m)	ϵ_r	σ (S/m)	$\Delta\epsilon_r$	$\Delta\sigma$ (S/m)	
2412	Simulated Tissue 2450 MHz Body	53.764	1.903	52.75	1.91	1.92	-0.37	± 5
2437	Simulated Tissue 2450 MHz Body	53.522	1.915	52.72	1.94	1.52	-1.29	± 5
2450	Simulated Tissue 2450 MHz Body	53.367	1.919	52.7	1.95	1.27	-1.59	± 5
2457	Simulated Tissue 2450 MHz Body	53.357	1.913	52.69	1.96	1.27	-2.4	± 5
2462	Simulated Tissue 2450 MHz Body	53.286	1.913	52.68	1.97	1.15	-2.89	± 5

*Liquid Verification above was performed on 2017-08-03.

System Accuracy Verification

Prior to the assessment, the system validation kit was used to test whether the system was operating within its specifications of $\pm 10\%$. The validation results are tabulated below. And also the corresponding SAR plot is attached as well in the SAR plots files.

System Verification Setup Block Diagram



System Accuracy Check Results

Date	Frequency Band (MHz)	Liquid Type	Input Power (mW)	Measured SAR(W/kg)		Normalized to 1W (W/kg)	Target Value (W/kg)	Delta (%)	Tolerance (%)
2017-08-01	5800	Body	100	1g	7.41	74.1	75.8	-2.24	± 10
2017-08-02	5250	Body	100	1g	7.51	75.1	77.9	-3.59	± 10

*The SAR values above are normalized to 1 Watt forward power.

Date	Frequency Band (MHz)	Liquid Type	Input Power (mW)	Measured SAR(W/kg)		Target Value (W/kg)	Delta (%)	Tolerance (%)
2017-08-03	2450	Body	1000	1g	50.4	51.3	-1.75	± 10

SAR SYSTEM VALIDATION DATA

Test Plot *#: System Performance: 2450 MHz Body

DUT: D2450V2; Type: 2450 MHz; Serial: 970

Communication System: CW; Frequency: 2450 MHz; Duty Cycle: 1:1

Medium parameters used: $f = 2450$ MHz; $\sigma = 1.919$ S/m; $\epsilon_r = 53.367$; $\rho = 1000$ kg/m³

Phantom section: Center Section

DASY5 Configuration:

- Probe: EX3DV4 - SN7441; ConvF(7.67, 7.67, 7.67); Calibrated: 2016/11/15;
- Sensor-Surface: 1.4mm (Mechanical Surface Detection)
- Electronics: DAE3 Sn379; Calibrated: 2016/10/4
- Phantom: Triple Flat Phantom 5.1C; Type: QD 000 P51 CA; Serial: 1130
- Measurement SW: DASY52, Version 52.8 (8);

Area Scan (91x61x1): Interpolated grid: dx=1.000 mm, dy=1.000 mm

Maximum value of SAR (interpolated) = 67.5 W/kg

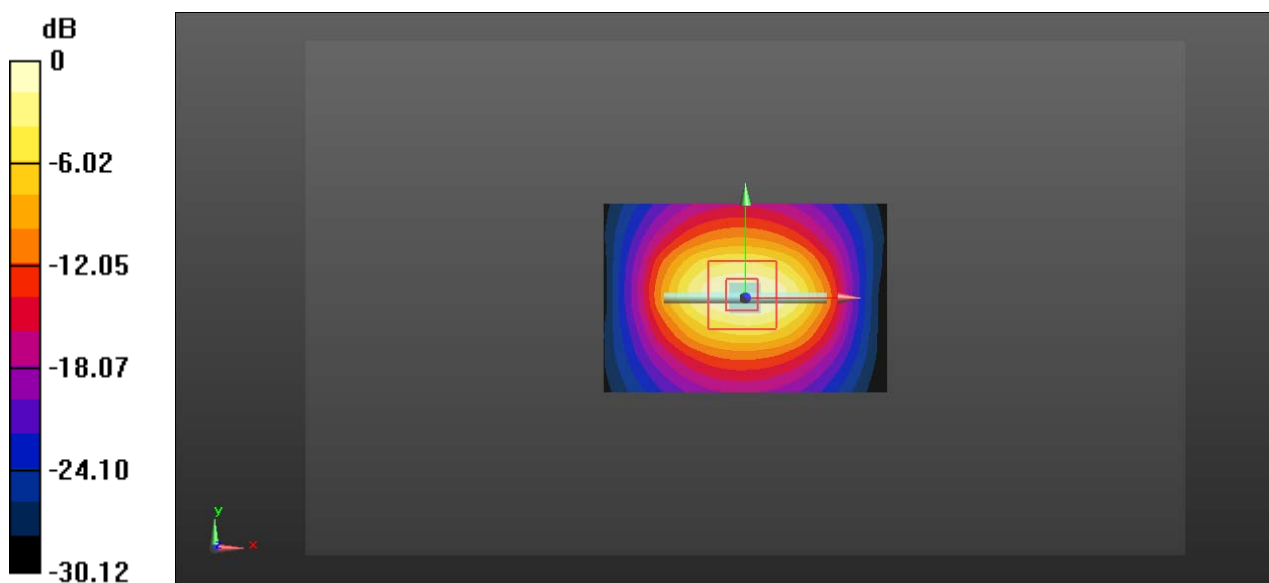
Zoom Scan (7x7x7)/Cube 0: Measurement grid: dx=5mm, dy=5mm, dz=5mm

Reference Value = 175.9 V/m; Power Drift = 0.13 dB

Peak SAR (extrapolated) = 106 W/kg

SAR(1 g) = 50.4 W/kg; SAR(10 g) = 22.7 W/kg

Maximum value of SAR (measured) = 58.8 W/kg



Test Plot *#: System Performance: 5250 MHz Body**DUT: D5GHzV2; Type: 5GHz; Serial: 1245**

Communication System: CW; Frequency: 5250 MHz; Duty Cycle: 1:1

Medium parameters used: $f = 5250$ MHz; $\sigma = 5.312$ S/m; $\epsilon_r = 49.876$; $\rho = 1000$ kg/m³

Phantom section: Center Section

DASY5 Configuration:

- Probe: EX3DV4 - SN7441; ConvF(5.24, 5.24, 5.24); Calibrated: 2016/11/15;
- Sensor-Surface: 1.4mm (Mechanical Surface Detection)
- Electronics: DAE3 Sn379; Calibrated: 2016/10/4
- Phantom: Triple Flat Phantom 5.1C; Type: QD 000 P51 CA; Serial: 1130
- Measurement SW: DASY52, Version 52.8 (8);

Area Scan (61x41x1): Interpolated grid: dx=1.000 mm, dy=1.000 mm

Maximum value of SAR (interpolated) = 15.7 W/kg

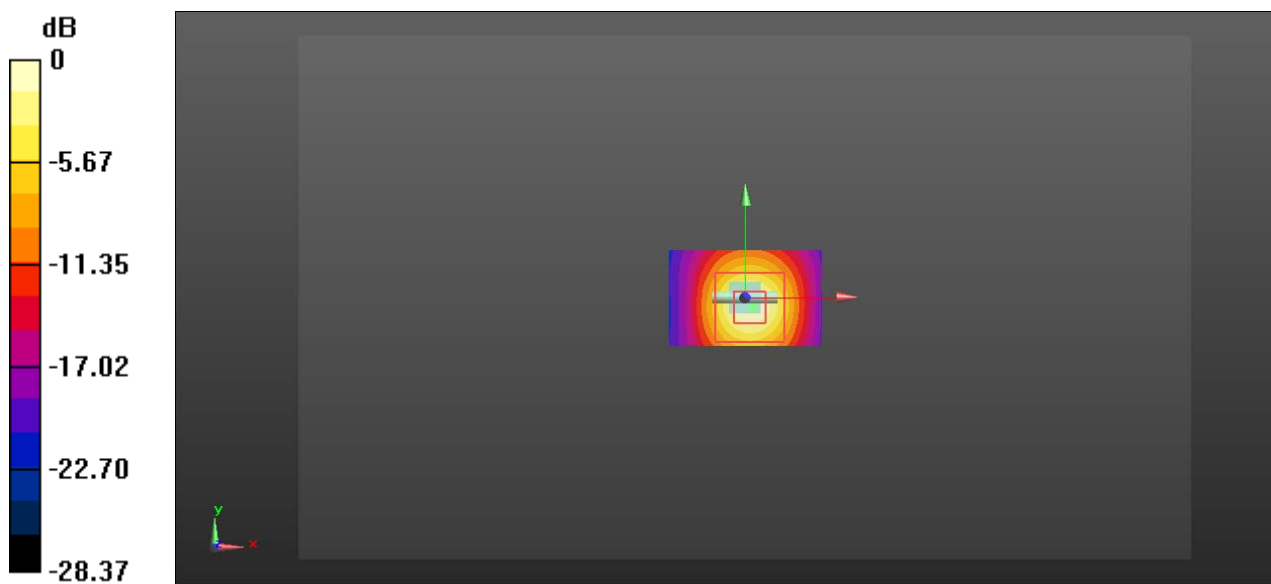
Zoom Scan (7x7x6)/Cube 0: Measurement grid: dx=5mm, dy=5mm, dz=2mm

Reference Value = 41.93 V/m; Power Drift = -0.14 dB

Peak SAR (extrapolated) = 28.6 W/kg

SAR(1 g) = 7.51 W/kg; SAR(10 g) = 2.12 W/kg

Maximum value of SAR (measured) = 15.6 W/kg



0 dB = 15.6 W/kg = 11.93 dBW/kg

Test Plot *#: System Performance: 5800 MHz Body**DUT: D5GHzV2; Type: 5GHz; Serial: 1245**

Communication System: CW; Frequency: 5800 MHz; Duty Cycle: 1:1

Medium parameters used: $f = 5800$ MHz; $\sigma = 5.961$ S/m; $\epsilon_r = 49.179$; $\rho = 1000$ kg/m³

Phantom section: Center Section

DASY5 Configuration:

- Probe: EX3DV4 - SN7441; ConvF(4.48, 4.48, 4.48); Calibrated: 2016/11/15;
- Sensor-Surface: 1.4mm (Mechanical Surface Detection)
- Electronics: DAE3 Sn379; Calibrated: 2016/10/4
- Phantom: Triple Flat Phantom 5.1C; Type: QD 000 P51 CA; Serial: 1130
- Measurement SW: DASY52, Version 52.8 (8);

Area Scan (61x41x1): Interpolated grid: dx=1.000 mm, dy=1.000 mm

Maximum value of SAR (interpolated) = 15.8 W/kg

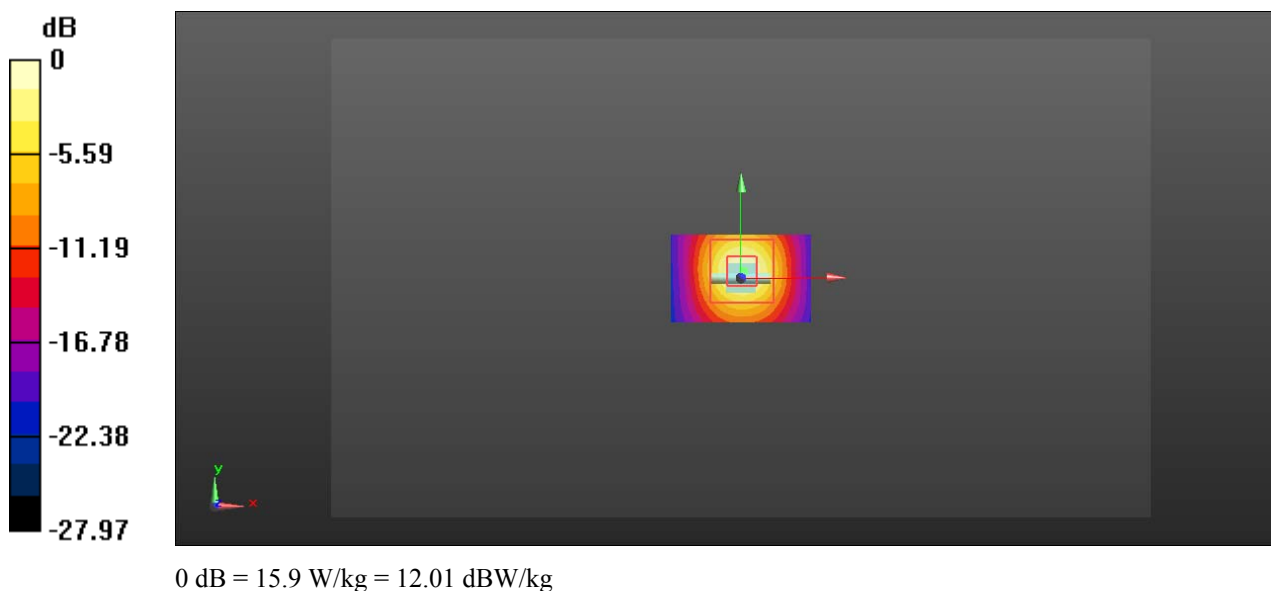
Zoom Scan (7x7x6)/Cube 0: Measurement grid: dx=5mm, dy=5mm, dz=2mm

Reference Value = 38.41 V/m; Power Drift = -0.07 dB

Peak SAR (extrapolated) = 32.2 W/kg

SAR(1 g) = 7.41 W/kg; SAR(10 g) = 2.04 W/kg

Maximum value of SAR (measured) = 15.9 W/kg

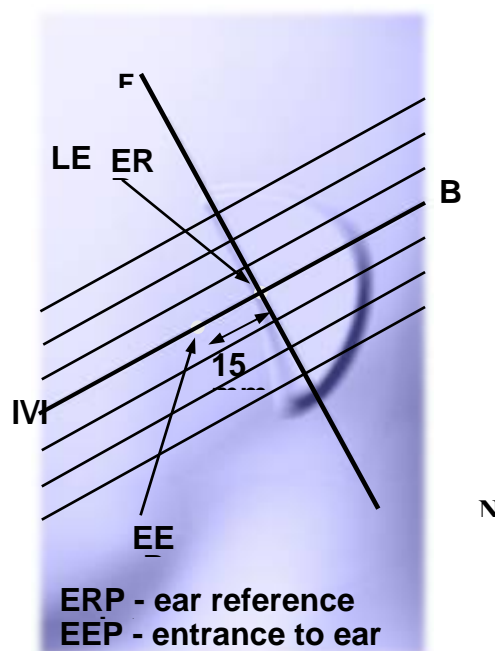
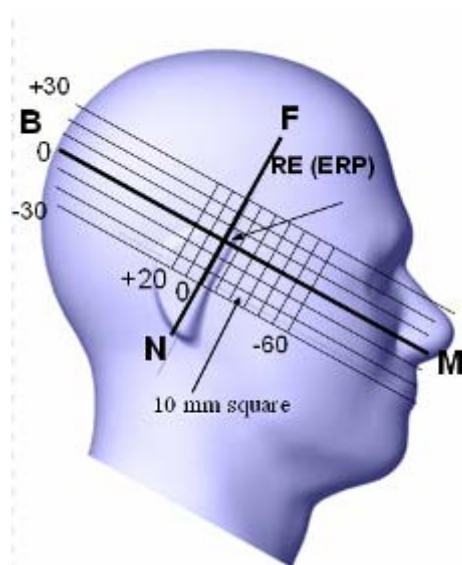


EUT TEST STRATEGY AND METHODOLOGY

Test Positions for Device Operating Next to a Person's Ear

This category includes most wireless handsets with fixed, retractable or internal antennas located toward the top half of the device, with or without a foldout, sliding or similar keypad cover. The handset should have its earpiece located within the upper ¼ of the device, either along the centerline or off-centered, as perceived by its users. This type of handset should be positioned in a normal operating position with the “test device reference point” located along the “vertical centerline” on the front of the device aligned to the “ear reference point”. The “test device reference point” should be located at the same level as the center of the earpiece region. The “vertical centerline” should bisect the front surface of the handset at its top and bottom edges. A “ear reference point” is located on the outer surface of the head phantom on each ear spacer. It is located 1.5 cm above the center of the ear canal entrance in the “phantom reference plane” defined by the three lines joining the center of each “ear reference point” (left and right) and the tip of the mouth.

A handset should be initially positioned with the earpiece region pressed against the ear spacer of a head phantom. For the SCC-34/SC-2 head phantom, the device should be positioned parallel to the “N-F” line defined along the base of the ear spacer that contains the “ear reference point”. For interim head phantoms, the device should be positioned parallel to the cheek for maximum RF energy coupling. The “test device reference point” is aligned to the “ear reference point” on the head phantom and the “vertical centerline” is aligned to the “phantom reference plane”. This is called the “initial ear position”. While maintaining these three alignments, the body of the handset is gradually adjusted to each of the following positions for evaluating SAR:



Cheek/Touch Position

The device is brought toward the mouth of the head phantom by pivoting against the “ear reference point” or along the “N-F” line for the SCC-34/SC-2 head phantom.

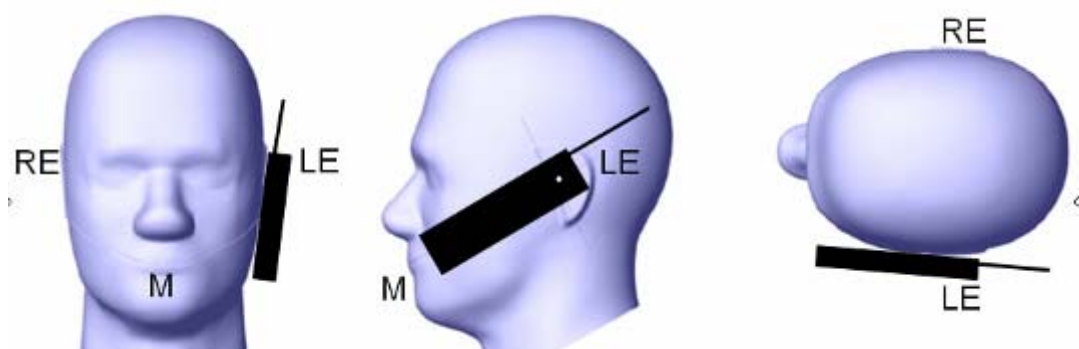
This test position is established:

When any point on the display, keypad or mouthpiece portions of the handset is in contact with the phantom.

(or) When any portion of a foldout, sliding or similar keypad cover opened to its intended self-adjusting normal use position is in contact with the cheek or mouth of the phantom.

For existing head phantoms – when the handset loses contact with the phantom at the pivoting point, rotation should continue until the device touches the cheek of the phantom or breaks its last contact from the ear spacer.

Cheek /Touch Position



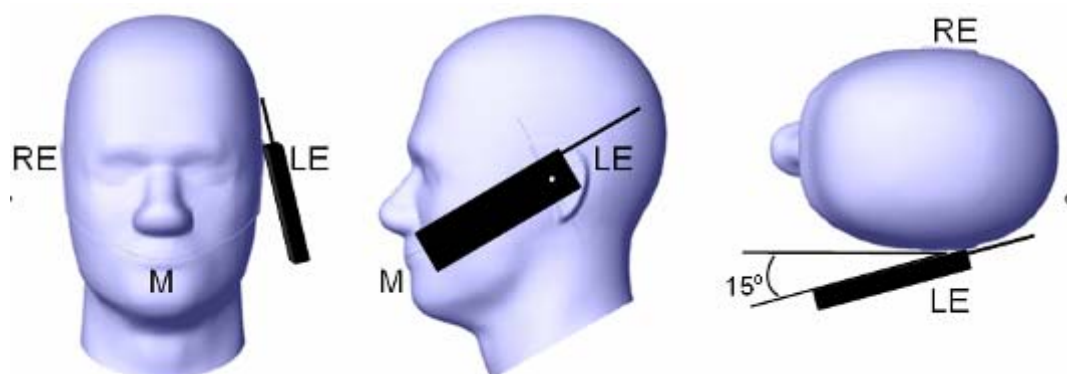
Ear/Tilt Position

With the handset aligned in the “Cheek/Touch Position”:

1) If the earpiece of the handset is not in full contact with the phantom’s ear spacer (in the “Cheek/Touch position”) and the peak SAR location for the “Cheek/Touch” position is located at the ear spacer region or corresponds to the earpiece region of the handset, the device should be returned to the “initial ear position” by rotating it away from the mouth until the earpiece is in full contact with the ear spacer.

2) (otherwise) The handset should be moved (translated) away from the cheek perpendicular to the line passes through both “ear reference points” (note: one of these ear reference points may not physically exist on a split head model) for approximate 2-3 cm. While it is in this position, the device handset is tilted away from the mouth with respect to the “test device reference point” until the inside angle between the vertical centerline on the front surface of the phone and the horizontal line passing through the ear reference point is by 15 to 80°. After the tilt, it is then moved (translated) back toward the head perpendicular to the line passes through both “ear reference points” until the device touches the phantom or the ear spacer. If the antenna touches the head first, the positioning process should be repeated with a tilt angle less than 15° so that the device and its antenna would touch the phantom simultaneously. This test position may require a device holder or positioner to achieve the translation and tilting with acceptable positioning repeatability.

If a device is also designed to transmit with its keypad cover closed for operating in the head position, such positions should also be considered in the SAR evaluation. The device should be tested on the left and right side of the head phantom in the “Cheek/Touch” and “Ear/Tilt” positions. When applicable, each configuration should be tested with the antenna in its fully extended and fully retracted positions. These test configurations should be tested at the high, middle and low frequency channels of each operating mode; for example, AMPS, CDMA, and TDMA. If the SAR measured at the middle channel for each test configuration (left, right, Cheek/Touch, Tilt/Ear, extended and retracted) is at least 2.0 dB lower than the SAR limit, testing at the high and low channels is optional for such test configuration(s). If the transmission band of the test device is less than 10 MHz, testing at the high and low frequency channels is optional.

Ear /Tilt 15° Position**Test positions for body-worn and other configurations**

Body-worn operating configurations should be tested with the belt-clips and holsters attached to the device and positioned against a flat phantom in normal use configurations. Devices with a headset output should be tested with a headset connected to the device. When multiple accessories that do not contain metallic components are supplied with the device, the device may be tested with only the accessory that dictates the closest spacing to the body. When multiple accessories that contain metallic components are supplied with the device, the device must be tested with each accessory that contains a unique metallic component. If multiple accessories share an identical metallic component (e.g., the same metallic belt-clip used with different holsters with no other metallic components), only the accessory that dictates the closest spacing to the body must be tested.

Body-worn accessories may not always be supplied or available as options for some devices that are intended to be authorized for body-worn use. A separation distance of 1.5 cm between the back of the device and a flat phantom is recommended for testing body-worn SAR compliance under such circumstances. Other separation distances may be used, but they should not exceed 2.5 cm. In these cases, the device may use body-worn accessories that provide a separation distance greater than that tested for the device provided however that the accessory contains no metallic components.

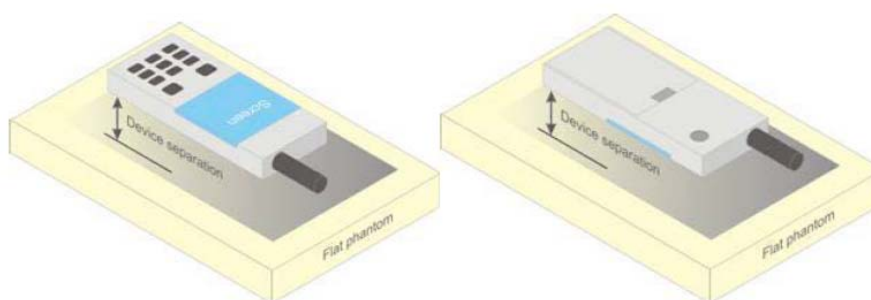


Figure 5 – Test positions for body-worn devices

Test Distance for SAR Evaluation

For this case the DUT(Device Under Test) is set directly against the phantom, the test distance is 0mm.

SAR Evaluation Procedure

The evaluation was performed with the following procedure:

Step 1: Measurement of the SAR value at a fixed location above the ear point or central position was used as a reference value for assessing the power drop. The SAR at this point is measured at the start of the test and then again at the end of the testing.

Step 2: The SAR distribution at the exposed side of the head was measured at a distance of 4 mm from the inner surface of the shell. The area covered the entire dimension of the head or radiating structures of the EUT, the horizontal grid spacing was 10 mm x 10 mm, and the SAR distribution was determined by integrated grid of 1.0 mm x 1.0 mm. Based on these data, the area of the maximum absorption was determined by spline interpolation. The first Area Scan covers the entire dimension of the EUT to ensure that the hotspot was correctly identified.

Step 3: Around this point, a volume of 30 mm x 30 mm x 30 mm was assessed by measuring 7x 7 x 7 points. On the basis of this data set, the spatial peak SAR value was evaluated under the following procedure:

1) The data at the surface were extrapolated, since the center of the dipoles is 1.2 mm away from the tip of the probe and the distance between the surface and the lowest measuring point is 1.3 mm. The extrapolation was based on a least square algorithm. A polynomial of the fourth order was calculated through the points in z-axes. This polynomial was then used to evaluate the points between the surface and the probe tip.

2) The maximum interpolated value was searched with a straightforward algorithm. Around this maximum the SAR values averaged over the spatial volumes (1 g or 10 g) were computed by the 3D-Spline interpolation algorithm. The 3D-Spline is composed of three one dimensional splines with the "Not a knot"-condition (in x, y and z-directions). The volume was integrated with the trapezoidal-algorithm. One thousand points (10 x 10 x 10) were interpolated to calculate the averages.

All neighboring volumes were evaluated until no neighboring volume with a higher average value was found.

Step 4: Re-measurement of the SAR value at the same location as in Step 1. If the value changed by more than 5%, the evaluation was repeated.

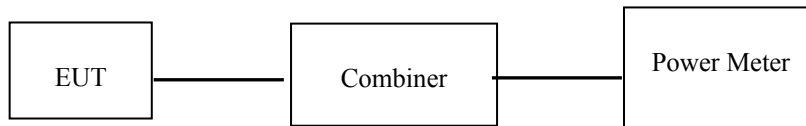
Test methodology

KDB 447498 D01 General RF Exposure Guidance v06.
KDB 865664 D01 SAR Measurement 100 MHz to 6 GHz v01r04
KDB 865664 D02 RF Exposure Reporting v01r02
KDB 616217 D04 SAR for laptop and tablets v01r02
KDB 248227 D01 802 11 Wi-Fi SAR v02r02

CONDUCTED OUTPUT POWER MEASUREMENT

Test Procedure

The RF output of the transmitter was connected to the input port of the Power Meter through Combiner.



Maximum Target Output Power

WLAN 2.4G:

Max Target Power(dBm)					
Mode/Band		Channel			
		Low	Middle	High	
		2412 MHz	2437 MHz	2457 MHz	2462 MHz
WLAN 2.4G Chain 0	802.11b	11	12.0	10.5	7.2
	802.11g	11	12.0	10.5	7.2
	802.11n HT20	11	12.0	10.5	7.2
WLAN 2.4G Chain 1	802.11b	11	12.0	10.5	7.2
	802.11g	11	12.0	10.5	7.2
	802.11n HT20	11	12.0	10.5	7.2

Max Target Power(dBm)					
Mode/Band		Channel			
		Low	Middle	High	
WLAN 5.2G Chain 0	802.11a	10.5	9.6	9.8	
	802.11n HT20	10.5	9.6	9.8	
WLAN 5.2G Chain 1	802.11a	10.5	9.6	9.8	
	802.11n HT20	10.5	9.6	9.8	
WLAN 5.8G Chain 0	802.11a	8.2	8.2	7.9	
	802.11n HT20	8.2	8.2	7.9	
WLAN 5.8G Chain 1	802.11a	8.2	8.2	7.9	
	802.11n HT20	8.2	8.2	7.9	

Test Results:**WLAN 2.4G:**

Max Conducted Output Power(dBm)					
Mode/Band		Channel			
		Low	Middle	High	
		2412 MHz	2437 MHz	2457 MHz	2462 MHz
WLAN 2.4G Chain 0	802.11b	9.69	11.3	9.02	6.99
	802.11g	10.08	11.21	9.17	6.56
	802.11n HT20	9.99	11.14	9.13	6.46
WLAN 2.4G Chain 1	802.11b	9.8	11.92	9.31	7.13
	802.11g	10.33	11.96	9.26	7.05
	802.11n HT20	10.28	11.95	9.2	7.11

Note: The output power was tested under data rate 1Mbps for 802.11b, 6Mbps for 802.11g and MCS0 for 802.11n HT20.

Max Conducted Output Power(dBm)				
Mode/Band		Channel		
		Low	Middle	High
WLAN 5.2G Chain 0	802.11a	10.45	9.27	9.78
	802.11n HT20	10.39	9.18	9.73
WLAN 5.2G Chain 1	802.11a	9.88	9.57	9.54
	802.11n HT20	9.92	9.53	9.54
WLAN 5.8G Chain 0	802.11a	7.87	8.14	6.92
	802.11n HT20	7.77	8.09	6.93
WLAN 5.8G Chain 1	802.11a	8.16	8.17	7.89
	802.11n HT20	8.09	8.14	7.89

Note: The output power was tested under data rate 6Mbps for 802.11a, and MCS0 for 802.11n HT20.

The top view diagram illustrates the layout of the PCB with the following dimensions and component locations:

- Dimensions:**
 - Horizontal distance from the left edge to the center of Antenna Chain 0: 51mm (green arrow).
 - Horizontal distance from the center of Antenna Chain 0 to the center of Antenna Chain 1: 81mm (blue arrow).
 - Horizontal distance from the center of Antenna Chain 1 to the right edge: 92mm (blue arrow).
 - Horizontal distance from the left edge to the right edge: 132mm (green arrow).
 - Vertical distance from the top edge to the center of Antenna Chain 0: 22mm (green arrow).
 - Vertical distance from the center of Antenna Chain 0 to the bottom edge: 89mm (green arrow).
 - Vertical distance from the top edge to the center of Antenna Chain 1: 22mm (blue arrow).
 - Vertical distance from the center of Antenna Chain 1 to the bottom edge: 89mm (blue arrow).
- Component Locations:**
 - Antenna Chain 0:** Located on the left side of the PCB, centered vertically.
 - Antenna Chain 1:** Located on the right side of the PCB, centered vertically.
- Orientation:**
 - Top:** Indicated by a red label at the top center.
 - Bottom:** Indicated by a red label at the bottom center.
 - Right:** Indicated by a red label on the left side.
 - Left:** Indicated by a red label on the right side.
 - Back:** Indicated by a red label below the PCB.
 - Front(Reverse):** Indicated by a blue label below the PCB.

Antenna Distance To Edge(mm)					
Mode	Left	Right	Back	Top	Bottom
Antenna Chain 0	132	51	<5	22	89
Antenna Chain 1	92	81	<5	22	89

SAR Test Exclusion for the EUT Edges Considerations					
Mode	Left	Right	Back	Top	Bottom
Antenna Chain 0	Judge	Judge	Required	Judge	Judge
Antenna Chain 1	Judge	Judge	Required	Judge	Judge

Judge: Please refer the below tables for detail.

SAR test exclusion for the EUT edge considerations detail:**Distance < 50mm (To Edges)**

Antenna	Edge	Frequency (MHz)	Pavg (dBm)	Pavg (mW)	Distance (mm)	Calculated value	Threshold (1-g)	SAR Test required
WLAN 2.4G Chain 0	Top	2437	12	15.85	22	1.1	3	No
WLAN 2.4G Chain 1	Top	2437	12	15.85	22	1.1	3	No
WLAN 5.2G Chain 0	Top	5180	10.5	11.22	22	1.2	3	No
WLAN 5.2G Chain 1	Top	5180	10.5	11.22	22	1.2	3	No
WLAN 5.8G Chain 0	Top	5785	8.2	6.61	22	0.7	3	No
WLAN 5.8G Chain 1	Top	5785	8.2	6.61	22	0.7	3	No

The 1-g and 10-g SAR test exclusion thresholds for 100 MHz to 6 GHz at test separation distances ≤ 50 mm are determined by:

$$\left[\frac{\text{max. power of channel, including tune-up tolerance, mW}}{\text{min. test separation distance, mm}} \right] \cdot$$

$$\left[\sqrt{f(\text{GHz})} \right] \leq 3.0 \text{ for 1-g SAR and } \leq 7.5 \text{ for 10-g extremity SAR, where}$$

1. $f(\text{GHz})$ is the RF channel transmit frequency in GHz.

2. Power and distance are rounded to the nearest mW and mm before calculation.

3. The result is rounded to one decimal place for comparison.

4. When the minimum test separation distance is < 5 mm, a distance of 5 mm is applied to determine SAR test Exclusion.

Distance > 50mm (To Edges)

Antenna	Edge	Frequency (MHz)	Pavg (dBm)	Pavg (mW)	Distance (mm)	Test exclusion Threshold (mW)	SAR Test required
WLAN 2.4G Chain 0	Left	2437	12	15.85	132	916	No
	Right	2437	12	15.85	51	106	No
	Bottom	2437	12	15.85	89	486	No
WLAN 2.4G Chain 1	Left	2437	12	15.85	92	516	No
	Right	2437	12	15.85	81	406	No
	Bottom	2437	12	15.85	89	486	No
WLAN 5.2G Chain 0	Left	5180	10.5	11.22	132	885	No
	Right	5180	10.5	11.22	51	75	No
	Bottom	5180	10.5	11.22	89	455	No
WLAN 5.2G Chain 1	Left	5180	10.5	11.22	92	485	No
	Right	5180	10.5	11.22	81	375	No
	Bottom	5180	10.5	11.22	89	455	No
WLAN 5.8G Chain 0	Left	5785	8.2	6.61	132	882	No
	Right	5785	8.2	6.61	51	72	No
	Bottom	5785	8.2	6.61	89	452	No
WLAN 5.8G Chain 1	Left	5785	8.2	6.61	92	482	No
	Right	5785	8.2	6.61	81	372	No
	Bottom	5785	8.2	6.61	89	452	No

At 100 MHz to 6 GHz and for *test separation distances* > 50 mm, the SAR test exclusion threshold is determined according to the following:

- [Power allowed at numeric threshold for 50 mm in step 1) + (test separation distance - 50 mm) · (f(MHz)/150)] mW, at 100 MHz to 1500 MHz
- [Power allowed at numeric threshold for 50 mm in step 1) + (test separation distance - 50 mm) · 10] mW at > 1500 MHz and ≤ 6 GHz

SAR MEASUREMENT RESULTS

This page summarizes the results of the performed dosimetric evaluation.

SAR Test Data

Environmental Conditions

Temperature:	22.3-23.4 °C	22.5-23.3 °C	22.4-23.6 °C
Relative Humidity:	45 %	44 %	43 %
ATM Pressure:	996 mbar	996 mbar	996 mbar
Test Date:	2017-08-01	2017-08-02	2017-08-03

Testing was performed by Edison Hu, Zack Huang, Peter Lee.

WLAN 2.4G :

EUT Position	Frequency (MHz)	Mode	Power Drift (dB)	Max. Meas. Power (dBm)	Max. Rated Power (dBm)	1 g SAR (W/kg)			
						Scaled Factor	Meas. SAR	Scaled SAR	Plot
Body Back Chain 0	2412	802.11b	/	/	/	/	/	/	/
	2437	802.11b	0.17	11.3	12	1.175	0.137	0.16	1#
	2457	802.11b	/	/	/	/	/	/	/
	2462	802.11b	/	/	/	/	/	/	/
Body Back Chain 1	2412	802.11b	/	/	/	/	/	/	/
	2437	802.11b	-0.15	11.92	12	1.019	0.108	0.11	2#
	2457	802.11b	/	/	/	/	/	/	/
	2462	802.11b	/	/	/	/	/	/	/

Note:

1. When the SAR value is less than half of the limit value, testing for other channels are optional.
2. When SAR or MPE is not measured at the maximum power level allowed for production units, the results must be scaled to the maximum tune-up tolerance limit according to the power applied to the individual channels tested to determine compliance.
3. When the highest *reported* SAR for DSSS is ≤ 1.2 W/kg, and the RF output power for DSSS is not less than OFDM, SAR is not required for OFDM.

WLAN 5.2G :

EUT Position	Frequency (MHz)	Mode	Power Drift (dB)	Max. Meas. Power (dBm)	Max. Rated Power (dBm)	1 g SAR (W/kg)			
						Scaled Factor	Meas. SAR	Scaled SAR	Plot
Body Back Chain 0	5180	802.11a	0.12	10.45	10.5	1.012	0.952	0.96	3#
	5200	802.11a	-0.18	9.27	9.6	1.079	1.090	1.18	4#
	5240	802.11a	0.13	9.78	9.8	1.005	0.910	0.91	5#
Body Back Chain 1	5180	802.11a	/	/	/	/	/	/	/
	5200	802.11a	0.12	9.57	9.6	1.007	0.765	0.77	6#
	5240	802.11a	/	/	/	/	/	/	/

WLAN 5.8G :

EUT Position	Frequency (MHz)	Mode	Power Drift (dB)	Max. Meas. Power (dBm)	Max. Rated Power (dBm)	1 g SAR (W/kg)			
						Scaled Factor	Meas. SAR	Scaled SAR	Plot
Body Back Chain 0	5745	802.11a	/	/	/	/	/	/	/
	5785	802.11a	0.15	8.14	8.2	1.014	0.336	0.34	7#
	5825	802.11a	/	/	/	/	/	/	/
Body Back Chain 1	5745	802.11a	/	/	/	/	/	/	/
	5785	802.11a	0.04	8.17	8.2	1.007	0.228	0.23	8#
	5825	802.11a	/	/	/	/	/	/	/

SAR SIMULTANEOUS TRANSMISSION DESCRIPTION

Simultaneous Transmission:

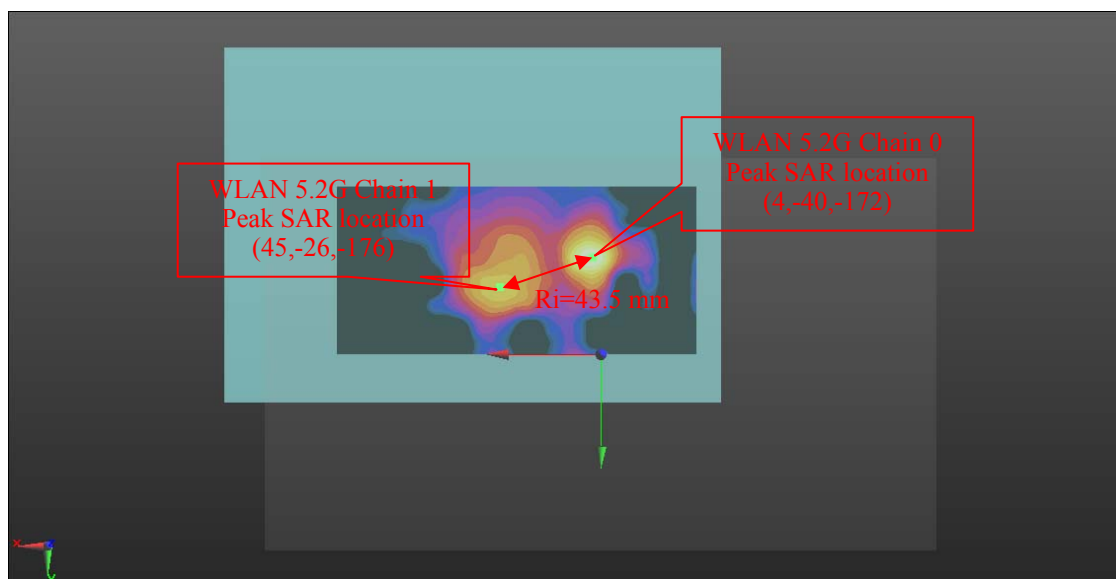
Description of Simultaneous Transmit Capabilities	
Transmitter Combination	Simultaneous?
WLAN 2.4G Chain 0+WLAN 2.4G Chain 1	√
WLAN 5.2G Chain 0+WLAN 5.2G Chain 1	√
WLAN 5.8G Chain 0+WLAN 5.8G Chain 1	√

Note: WLAN 2.4G, WLAN 5.2G and WLAN 5.8G share the same antenna(Chain 0 and Chain 1), the EUT cannot transmit in different mode.

Simultaneous SAR test exclusion considerations:

Mode(SAR1+SAR2)	Position	Reported SAR(W/kg)		Σ SAR < 1.6W/kg
		SAR1	SAR2	
WLAN 2.4G Chain 0+WLAN 2.4G Chain 1	Body Back	0.16	0.11	0.27
WLAN 5.2G Chain 0+WLAN 5.2G Chain 1	Body Back	1.18	0.77	1.95^{SPLSR 1}
WLAN 5.8G Chain 0+WLAN 5.8G Chain 1	Body Back	0.34	0.23	0.57

SPLSR 1:



$$\text{Distance}(R_i) = [(x_1-x_2)^2 + (y_1-y_2)^2 + (z_1-z_2)^2]^{0.5} = 43.5 \text{ mm}$$

$$\text{SPLSR} = (\text{SAR1} + \text{SAR2})^{1.5} / R_i = (1.18 + 0.77)^{1.5} / 43.5 = \mathbf{0.063} > 0.04$$

Note: The SPLSR is greater than 0.04, volume Scans is **required**.

Volume Scan simultaneous Transmission SAR Test

Per KDB 447498 D01, the antennas in all antenna pairs that do not qualify for simultaneous transmission SAR test exclusion must be tested for SAR compliance, according to the enlarged zoom scan and volume scan post-processing procedures in KDB Publication 865664 D01.

SAR plots for the enlarged zoom scans and post-processed volume scan, showing the peak SAR locations, are also provided in the Sar report to support the measurement configurations.

Per KDB 865664 D02, the volume scan is used for assess overlapping SAR distributions for antennas transmitting in different frequency bands. It is equivalent to an oversized zoom scan used in standalone measurements. The measurement volume will be used to enclose all simultaneous transmitting antennas. For antennas transmitting simultaneously in different frequency bands, the volume scan is measured separately in each frequency band. In order to sum correctly to compute the 1g aggregate SAR, the EUT remain in the same test position for all measurements and all volume scan use the same spatial resolution and grid spacing. When all volume scan were completed, the DASY software, SEMCAD postprocessor can combine and subsequently superpose these measurement data to calculating the multiband SAR.

Per KDB 865664 D01, the entire SAR distribution in the enlarged zoom scan should be scaled before applying the volume scan post-processing procedures to determine the aggregate SAR distribution and 1g SAR. For SPEAG DASY SAR test system, the scaling factor can be directly input into the SEMCAD test software and be applied to the measured points in the enlarged zoom scan before calculating the multiband SAR.

Enlarged zoom scan measurement

The enlarged zoom scan measurement procedures in KDB 865664 D01 are implemented in the same SAR system:

- 1, A larger measurement volume is used to enclose all antennas and radiating structures of the test device.
- 2, The most stringent and conservative spatial resolution required for measurement, interpolation and extrapolation is applied to all the enlarged zoom scan.
- 3, The EUT is fixed on the phantom when the liquids are changed(if necessary) so that the summation of the SAR distributions is as accurate as possible.
- 4, If the battery of the device needs to be recharged, the charger cable is attached to the EUT when it remains positioned on the phantom.

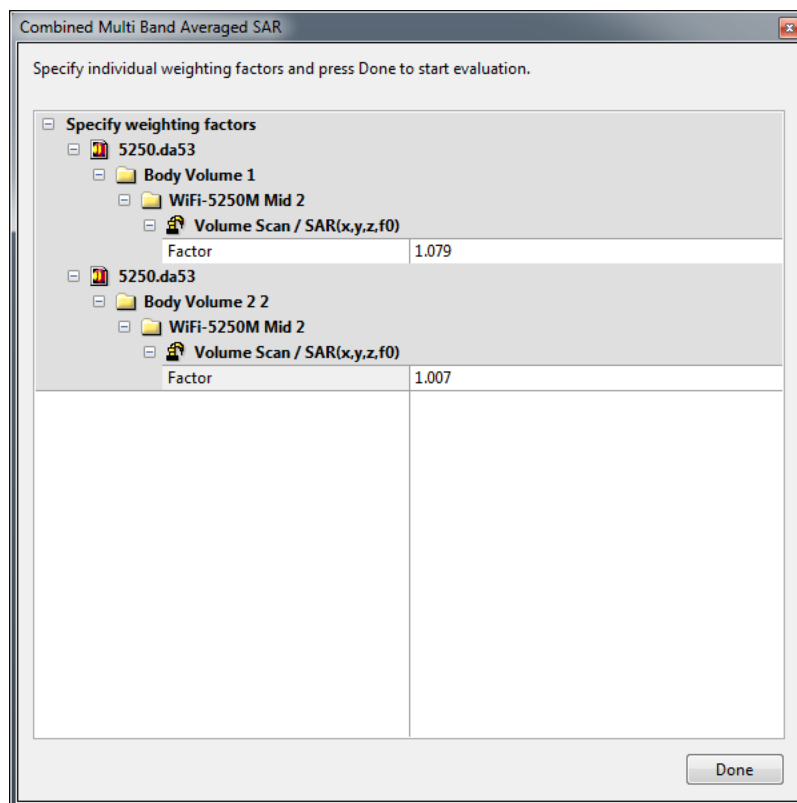
Volume scan post-processing procedure

The volume scan post-processing procedure is applied to assessing the multi-band SAR.

The entire SAR distribution in the enlarged zoom scan is scaled before applying the volume scan post-processing procedures to determine the aggregate SAR distribution and 1g SAR. For SPEAG DASY5 SAR test system, the scaling factor can be directly input into the SEMCAD test software and be applied to the measured points in the enlarged zoom scan before interpolation and extrapolation.

For WLAN 5.2G Chain 0+WLAN 5.2G Chain 1:

Input the scaling factor before computing.



Then the Multi Band simultaneous transmission SAR Result is obtained as below:

Test Plot *#:Multi Band scaled 1g simultaneous transmission SAR for WLAN 5.2G**Multi-Band Average SAR****Multi-Band Configurations:****DASY Configuration for Chain 0 Volume/WLAN 5.2G Chain 0 Middle Channel /Volume Scan:**

Date/Time: 2017/8/2 18:06:24

File Name: [5250 Body-1.da53:1](#)

DUT: CrystalSky(Ultra 7.85 inch); Type: CS785U; Serial: 17060300220

Communication System: 802.11 a; Frequency: 5200 MHz; Duty Cycle: 1:1;

Medium: 5250-B Medium parameters used: $f = 5200$ MHz; $\sigma = 5.216$ S/m; $\epsilon_r = 50.082$; $\rho = 1000$ kg/m³

Phantom section: Center Section

Measurement Standard: DASY5 (IEEE/IEC/ANSI C63.19-2011)

- Probe: EX3DV4 - SN7441; ConvF(5.24, 5.24, 5.24); Calibrated: 2016/11/15;
- Sensor-Surface: 1.4mm (Mechanical Surface Detection)
- Electronics: DAE3 Sn379; Calibrated: 2016/10/4
- Phantom: Triple Flat Phantom 5.1C; Type: QD 000 P51 CA; Serial: 1130
- Measurement SW: DASY52, Version 52.8 (8);

DASY Configuration for Chain 1 Volume/WLAN 5.2 G Chain 1 Middle Channel/Volume Scan:

Date/Time: 2017/8/2 19:49:11

File Name: [5250 Body-1.da53:2](#)**DUT: CrystalSky(Ultra 7.85 inch); Type: CS785U; Serial: 17060300220**

Communication System: 802.11 a; Frequency: 5200 MHz; Duty Cycle: 1:1;

Medium: 5250-B Medium parameters used: $f = 5200$ MHz; $\sigma = 5.216$ S/m; $\epsilon_r = 50.082$; $\rho = 1000$ kg/m³

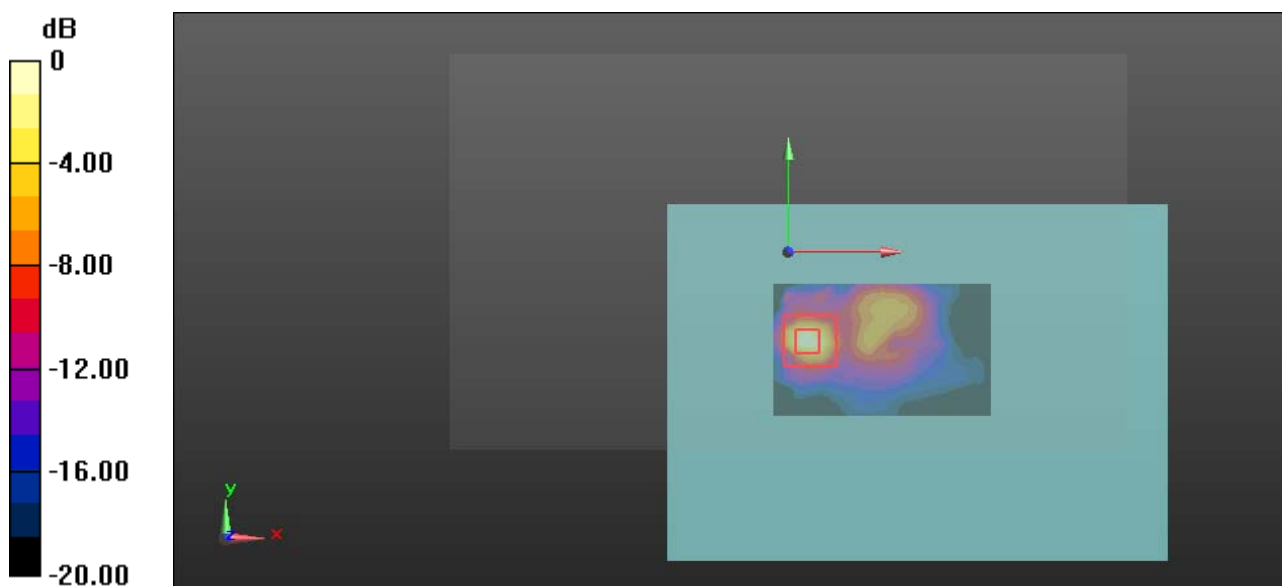
Phantom section: Center Section

Measurement Standard: DASY5 (IEEE/IEC/ANSI C63.19-2011)

- Probe: EX3DV4 - SN7441; ConvF(5.24, 5.24, 5.24); Calibrated: 2016/11/15;
- Sensor-Surface: 1.4mm (Mechanical Surface Detection)
- Electronics: DAE3 Sn379; Calibrated: 2016/10/4
- Phantom: Triple Flat Phantom 5.1C; Type: QD 000 P51 CA; Serial: 1130
- Measurement SW: DASY52, Version 52.8 (8);

Multi Band Result:**SAR(1 g) = 1.20 W/kg; SAR(10 g) = 0.382 W/kg**

Maximum value of SAR (interpolated) = 3.88 W/kg



0 dB = 3.88 W/kg = 5.89 dBW/kg

Multi Band scaled 1g simultaneous transmission SAR Result

Band	Test Position	Test Frequency (MHz)	Test Mode	Volume scan Measured 1g SAR(W/kg)	Scaling Factor	Multi Band scaled 1g simultaneous transmission SAR(W/kg)	Limit (W/kg)	Note	Plot
WLAN 5.2G Chain 0	Body Back	5200	802.11a	1.114	1.079	1.20	1.6	Pass	9#
WLAN 5.2G Chain 1	Body Back	5200	802.11a	0.784	1.007				

Simultaneous Transmission Conicusion

The above volume scan Simultaneous Transmission SAR is sufficient to determine that simultaneous transmission cases vill not exceed the SAR limit per KDB 447498 D01 v06.

SAR Measurement Variability

In accordance with published RF Exposure KDB procedure 865664 D01 SAR measurement 100 MHz to 6 GHz v01. These additional measurements are repeated after the completion of all measurements requiring the same head or body tissue-equivalent medium in a frequency band. The test device should be returned to ambient conditions (normal room temperature) with the battery fully charged before it is re-mounted on the device holder for the repeated measurement(s) to minimize any unexpected variations in the repeated results

- 1) Repeated measurement is not required when the original highest measured SAR is < 0.80 W/kg.
- 2) When the original highest measured SAR is ≥ 0.80 W/kg, repeat that measurement once.
- 3) Perform a second repeated measurement only if the ratio of largest to smallest SAR for the original and first repeated measurements is > 1.20 or when the original or repeated measurement is ≥ 1.45 W/kg ($\sim 10\%$ from the 1-g SAR limit).
- 4) Perform a third repeated measurement only if the original, first or second repeated measurement is ≥ 1.5 W/kg and the ratio of largest to smallest SAR for the original, first and second repeated measurements is > 1.20 .

Note: The same procedures should be adapted for measurements according to extremity and occupational exposure limits by applying a factor of 2.5 for extremity exposure and a factor of 5 for occupational exposure to the corresponding SAR thresholds.

The Highest Measured SAR Configuration in Each Frequency Band

Body

Frequency Band	Freq.(MHz)	EUT Position	Meas. SAR (W/kg)		Largest to Smallest SAR Ratio
			Original	Repeated	
(5140-5360 MHz) WLAN 5.2G(Chain 0)	5200	Body Back	1.09	1.02	1.07

Note:

1. Second Repeated Measurement is not required since the ratio of the largest to smallest SAR for the original and first repeated measurement is not > 1.20 .
2. The measured SAR results **do not** have to be scaled to the maximum tune-up tolerance to determine if repeated measurements are required.
3. SAR measurement variability must be assessed for each frequency band, which is determined by the **SAR probe calibration point and tissue-equivalent medium** used for the device measurements..

SAR Plots (Summary of the Highest SAR Values)

Please Refer to the Attachment.

APPENDIX A MEASUREMENT UNCERTAINTY

The uncertainty budget has been determined for the measurement system and is given in the following Table.

Measurement uncertainty evaluation for IEEE1528-2013 SAR test

Source of uncertainty	Tolerance/ uncertainty ± %	Probability distribution	Divisor	ci (1 g)	ci (10 g)	Standard uncertainty ± %, (1 g)	Standard uncertainty ± %, (10 g)
Measurement system							
Probe calibration	6.55	N	1	1	1	6.6	6.6
Axial Isotropy	4.7	R	$\sqrt{3}$	1	1	2.7	2.7
Hemispherical Isotropy	9.6	R	$\sqrt{3}$	0	0	0.0	0.0
Boundary effect	1.0	R	$\sqrt{3}$	1	1	0.6	0.6
Linearity	4.7	R	$\sqrt{3}$	1	1	2.7	2.7
Detection limits	1.0	R	$\sqrt{3}$	1	1	0.6	0.6
Readout electronics	0.3	N	1	1	1	0.3	0.3
Response time	0.0	R	$\sqrt{3}$	1	1	0.0	0.0
Integration time	0.0	R	$\sqrt{3}$	1	1	0.0	0.0
RF ambient conditions – noise	1.0	R	$\sqrt{3}$	1	1	0.6	0.6
RF ambient conditions–reflections	1.0	R	$\sqrt{3}$	1	1	0.6	0.6
Probe positioner mech. Restrictions	0.8	R	$\sqrt{3}$	1	1	0.5	0.5
Probe positioning with respect to phantom shell	6.7	R	$\sqrt{3}$	1	1	3.9	3.9
Post-processing	2.0	R	$\sqrt{3}$	1	1	1.2	1.2
Test sample related							
Test sample positioning	2.8	N	1	1	1	2.8	2.8
Device holder uncertainty	6.3	N	1	1	1	6.3	6.3
Drift of output power	5.0	R	$\sqrt{3}$	1	1	2.9	2.9
Phantom and set-up							
Phantom uncertainty (shape and thickness tolerances)	4.0	R	$\sqrt{3}$	1	1	2.3	2.3
Liquid conductivity target)	5.0	R	$\sqrt{3}$	0.64	0.43	1.8	1.2
Liquid conductivity meas.)	2.5	N	1	0.64	0.43	1.6	1.1
Liquid permittivity target)	5.0	R	$\sqrt{3}$	0.6	0.49	1.7	1.4
Liquid permittivity meas.)	2.5	N	1	0.6	0.49	1.5	1.2
Combined standard uncertainty		RSS				12.2	12.0
Expanded uncertainty 95 % confidence interval)						24.3	23.9

Measurement uncertainty evaluation for IEC62209-2 SAR test

Source of uncertainty	Tolerance/ uncertainty ± %	Probability distribution	Divisor	ci (1 g)	ci (10 g)	Standard uncertainty ± %, (1 g)	Standard uncertainty ± %, (10 g)
Measurement system							
Probe calibration	6.55	N	1	1	1	6.6	6.6
Axial Isotropy	4.7	R	$\sqrt{3}$	1	1	2.7	2.7
Hemispherical Isotropy	9.6	R	$\sqrt{3}$	0	0	0.0	0.0
Linearity	4.7	R	$\sqrt{3}$	1	1	2.7	2.7
Modulation Response	0.0	R	$\sqrt{3}$	1	1	0.0	0.0
Detection limits	1.0	R	$\sqrt{3}$	1	1	0.6	0.6
Boundary effect	1.0	R	$\sqrt{3}$	1	1	0.6	0.6
Readout electronics	0.3	N	1	1	1	0.3	0.3
Response time	0.0	R	$\sqrt{3}$	1	1	0.0	0.0
Integration time	0.0	R	$\sqrt{3}$	1	1	0.0	0.0
RF ambient conditions – noise	1.0	R	$\sqrt{3}$	1	1	0.6	0.6
RF ambient conditions–reflections	1.0	R	$\sqrt{3}$	1	1	0.6	0.6
Probe positioner mech. Restrictions	0.8	R	$\sqrt{3}$	1	1	0.5	0.5
Probe positioning with respect to phantom shell	6.7	R	$\sqrt{3}$	1	1	3.9	3.9
Post-processing	2.0	R	$\sqrt{3}$	1	1	1.2	1.2
Test sample related							
Device holder Uncertainty	6.3	N	1	1	1	6.3	6.3
Test sample positioning	2.8	N	1	1	1	2.8	2.8
Power scaling	4.5	R	$\sqrt{3}$	1	1	2.6	2.6
Drift of output power	5.0	R	$\sqrt{3}$	1	1	2.9	2.9
Phantom and set-up							
Phantom uncertainty (shape and thickness tolerances)	4.0	R	$\sqrt{3}$	1	1	2.3	2.3
Algorithm for correcting SAR for deviations in permittivity and conductivity	1.9	N	1	1	0.84	1.1	0.9
Liquid conductivity (meas.)	2.5	N	1	0.64	0.43	1.6	1.1
Liquid permittivity (meas.)	2.5	N	1	0.6	0.49	1.5	1.2
Temp. unc. - Conductivity	1.7	R	$\sqrt{3}$	0.78	0.71	0.8	0.7
Temp. unc. - Permittivity	0.3	R	$\sqrt{3}$	0.23	0.26	0.0	0.0
Combined standard uncertainty		RSS				12.2	12.1
Expanded uncertainty 95 % confidence interval)						24.5	24.2

APPENDIX B EUT TEST POSITION PHOTOS

Please Refer to the Attachment.

APPENDIX C CALIBRATION CERTIFICATES

Please Refer to the Attachment.

******* END OF REPORT *******