

Internal Pictures
Intelligent Systems

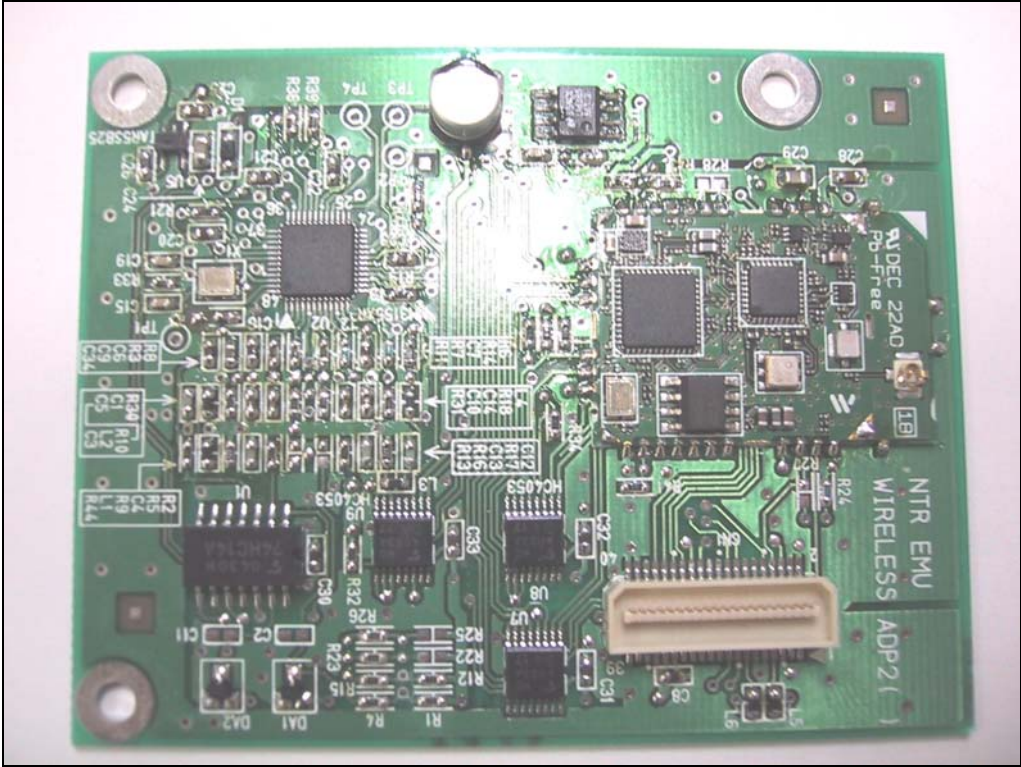
Top view Radio with Shield



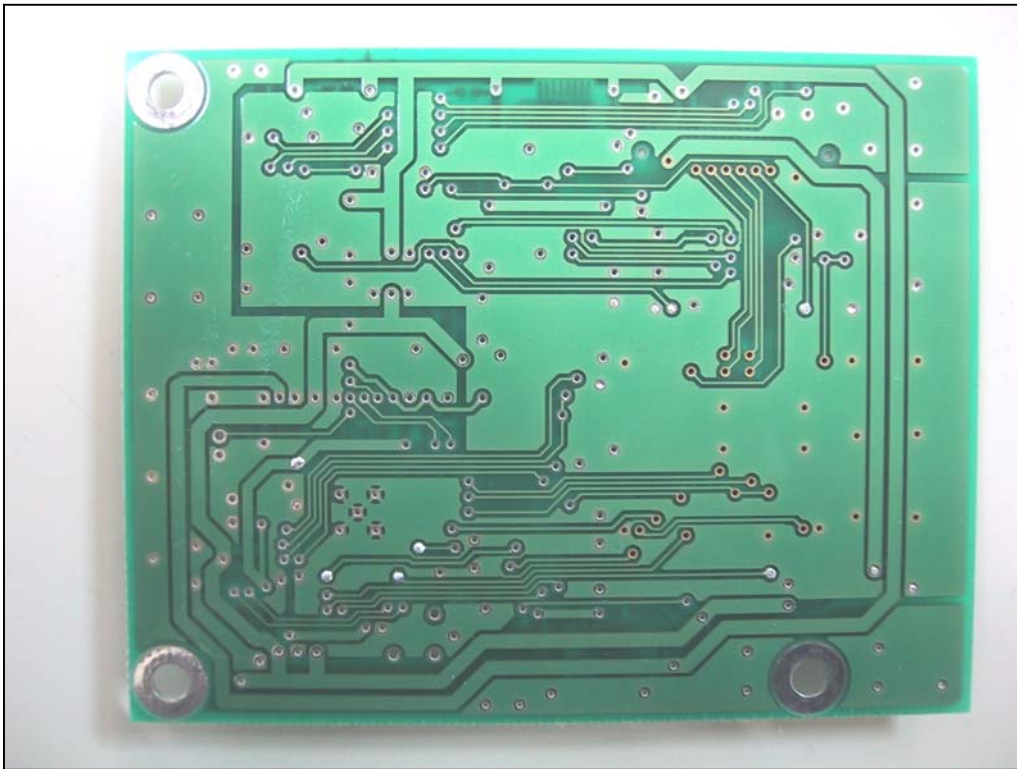
The image shows a green printed circuit board (PCB) for a wireless module. The board is populated with various electronic components, including integrated circuits, resistors, capacitors, and a large black component in the center. A white plastic connector is visible on the right side. The board has several mounting holes and is labeled with component values and part numbers.

Key components and labels visible on the board include:

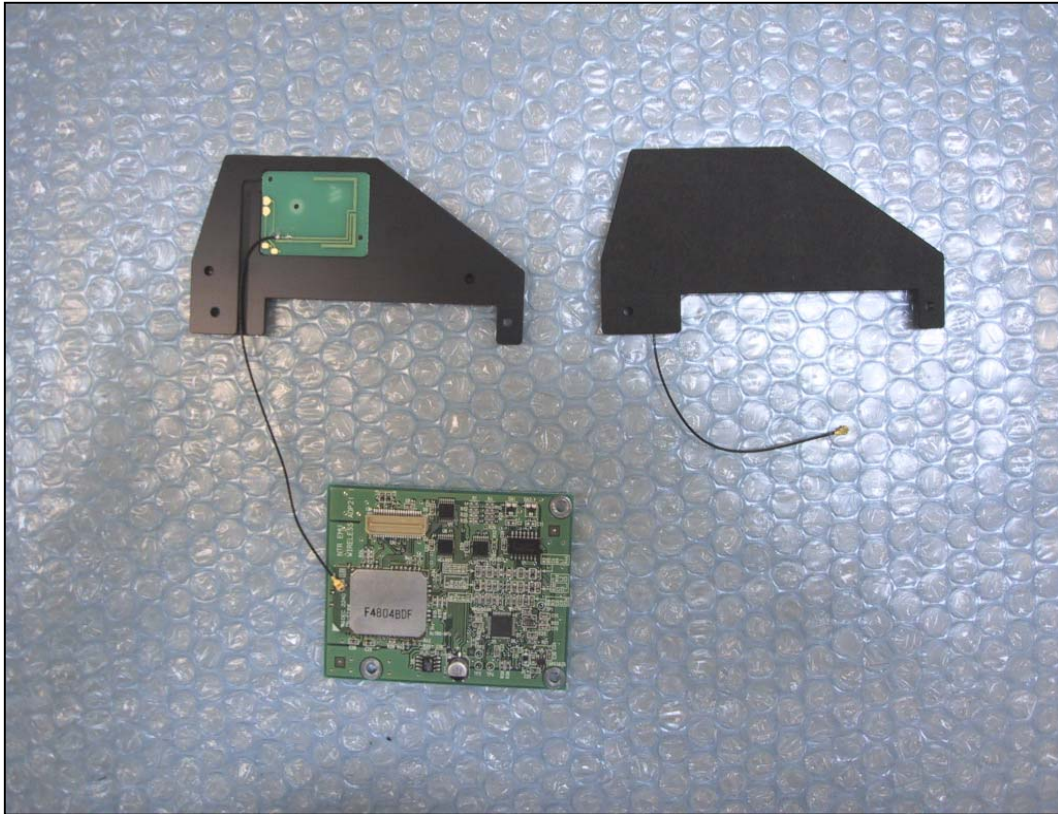
- Top Right:** A small black component labeled "NTR EMU WIRELESS ADP2 ()".
- Top Left:** A large black component labeled "AVDEC 22A0".
- Center:** A large black component labeled "AVDEC 22A0".
- Bottom Left:** A large black component labeled "AVDEC 22A0".
- Bottom Right:** A large black component labeled "AVDEC 22A0".
- Various other components:** Numerous resistors (R1, R2, R3, R4, R5, R6, R7, R8, R9, R10, R11, R12, R13, R14, R15, R16, R17, R18, R19, R20, R21, R22, R23, R24, R25, R26, R27, R28, R29, R30, R31, R32, R33, R34, R35, R36, R37, R38, R39, R40, R41, R42, R43, R44, R45, R46, R47, R48, R49, R50, R51, R52, R53, R54, R55, R56, R57, R58, R59, R60, R61, R62, R63, R64, R65, R66, R67, R68, R69, R70, R71, R72, R73, R74, R75, R76, R77, R78, R79, R80, R81, R82, R83, R84, R85, R86, R87, R88, R89, R90, R91, R92, R93, R94, R95, R96, R97, R98, R99, R100), capacitors (C1, C2, C3, C4, C5, C6, C7, C8, C9, C10, C11, C12, C13, C14, C15, C16, C17, C18, C19, C20, C21, C22, C23, C24, C25, C26, C27, C28, C29, C30, C31, C32, C33, C34, C35, C36, C37, C38, C39, C40, C41, C42, C43, C44, C45, C46, C47, C48, C49, C50, C51, C52, C53, C54, C55, C56, C57, C58, C59, C60, C61, C62, C63, C64, C65, C66, C67, C68, C69, C70, C71, C72, C73, C74, C75, C76, C77, C78, C79, C80, C81, C82, C83, C84, C85, C86, C87, C88, C89, C90, C91, C92, C93, C94, C95, C96, C97, C98, C99, C100), and other components like diodes (D1, D2, D3, D4, D5, D6, D7, D8, D9, D10, D11, D12, D13, D14, D15, D16, D17, D18, D19, D20, D21, D22, D23, D24, D25, D26, D27, D28, D29, D30, D31, D32, D33, D34, D35, D36, D37, D38, D39, D40, D41, D42, D43, D44, D45, D46, D47, D48, D49, D50, D51, D52, D53, D54, D55, D56, D57, D58, D59, D60, D61, D62, D63, D64, D65, D66, D67, D68, D69, D70, D71, D72, D73, D74, D75, D76, D77, D78, D79, D80, D81, D82, D83, D84, D85, D86, D87, D88, D89, D90, D91, D92, D93, D94, D95, D96, D97, D98, D99, D100).



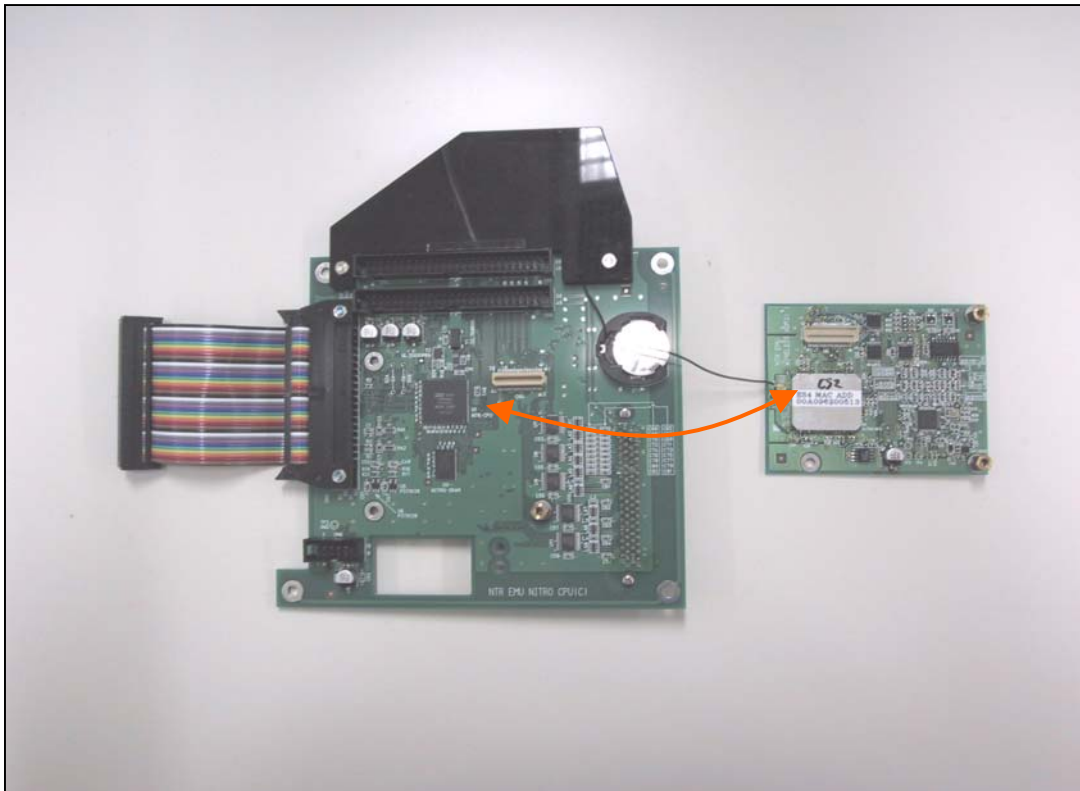
Bottom View Radio



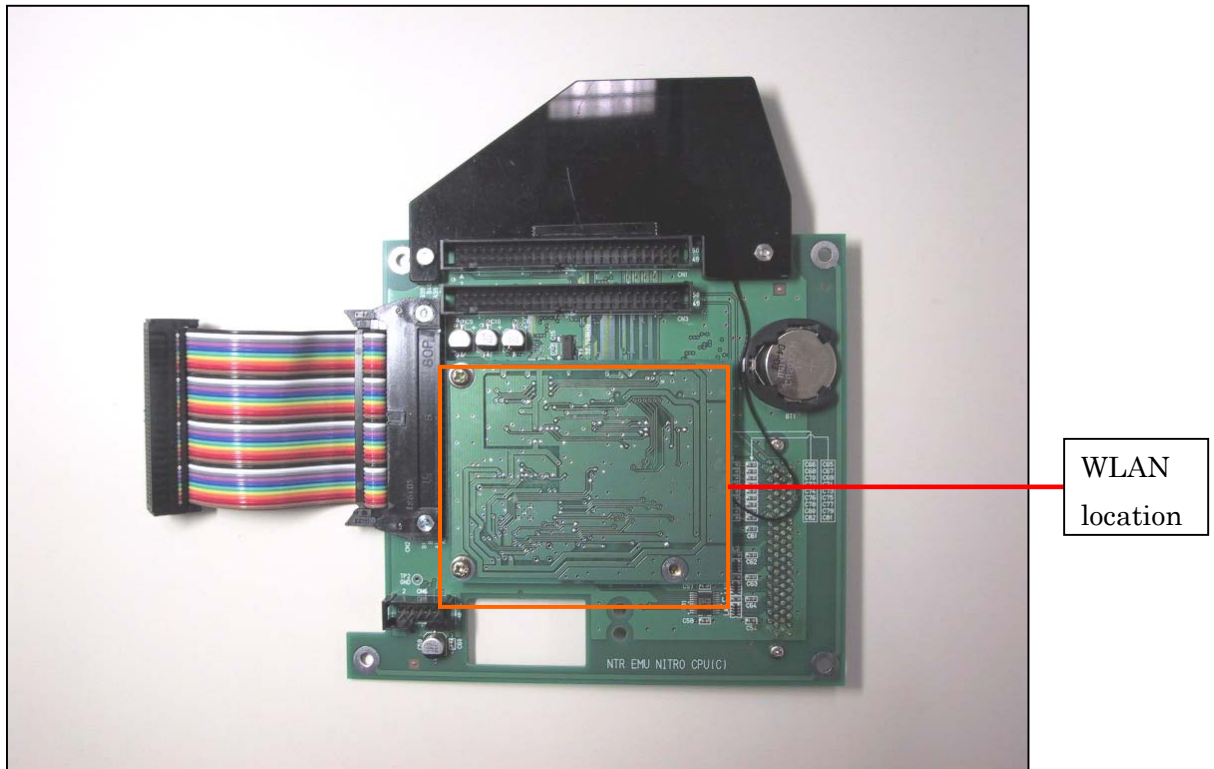
Top view Radio and Antenna



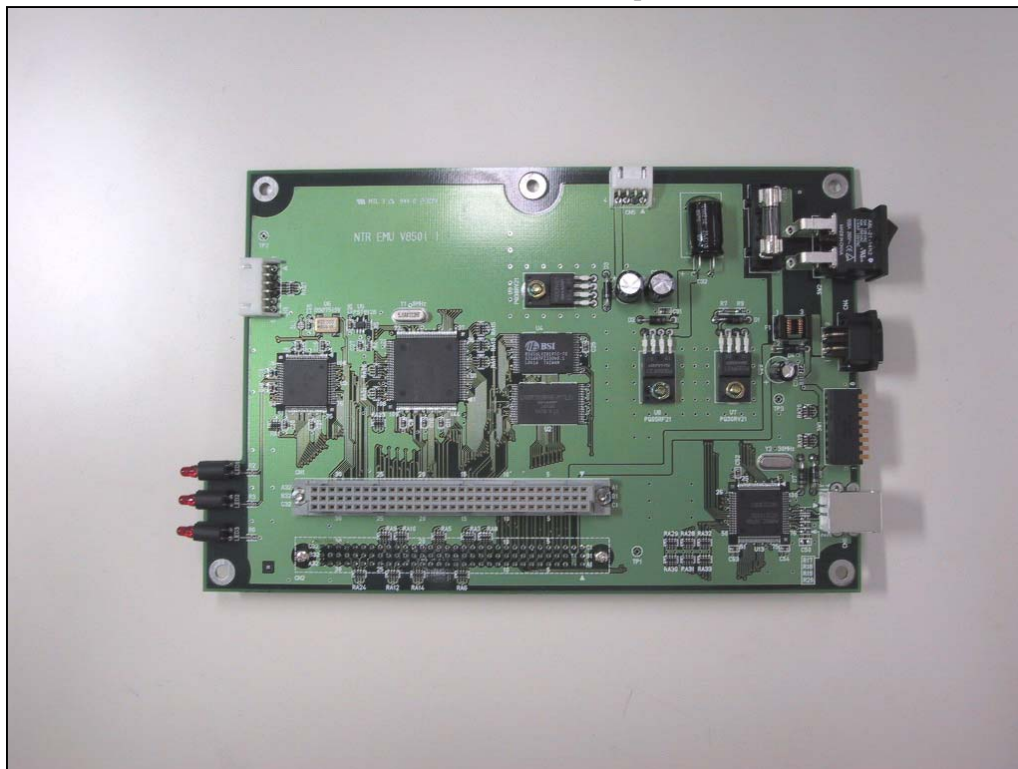
Radio connected to main board (top view)



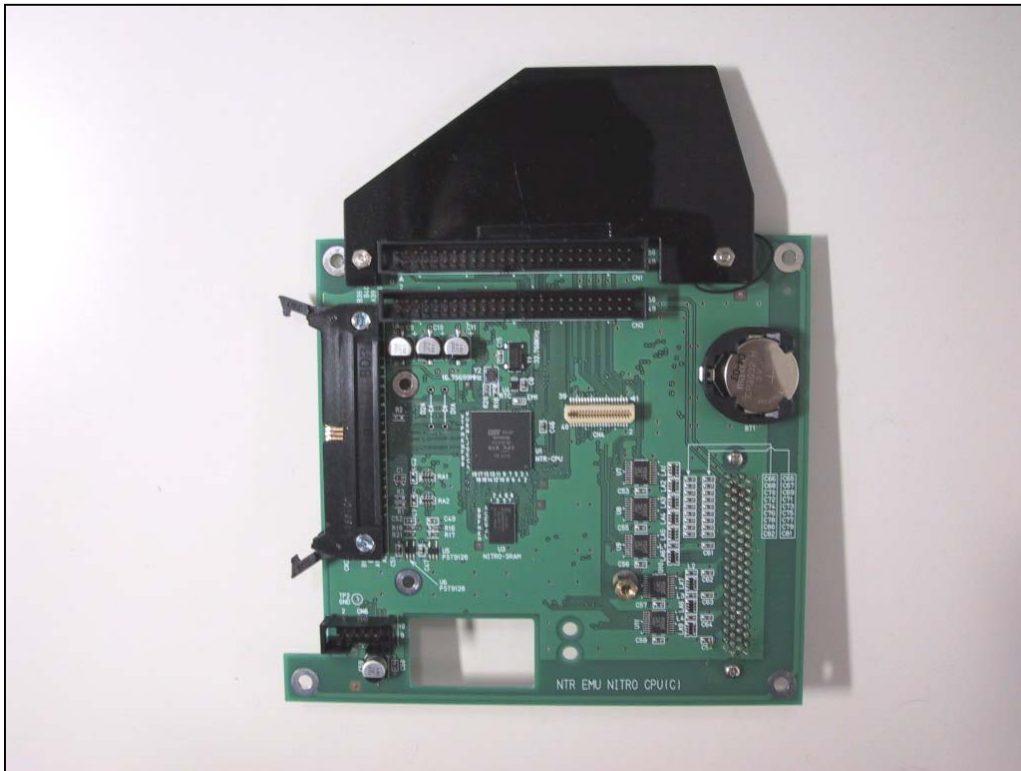
Main board (bottom view)



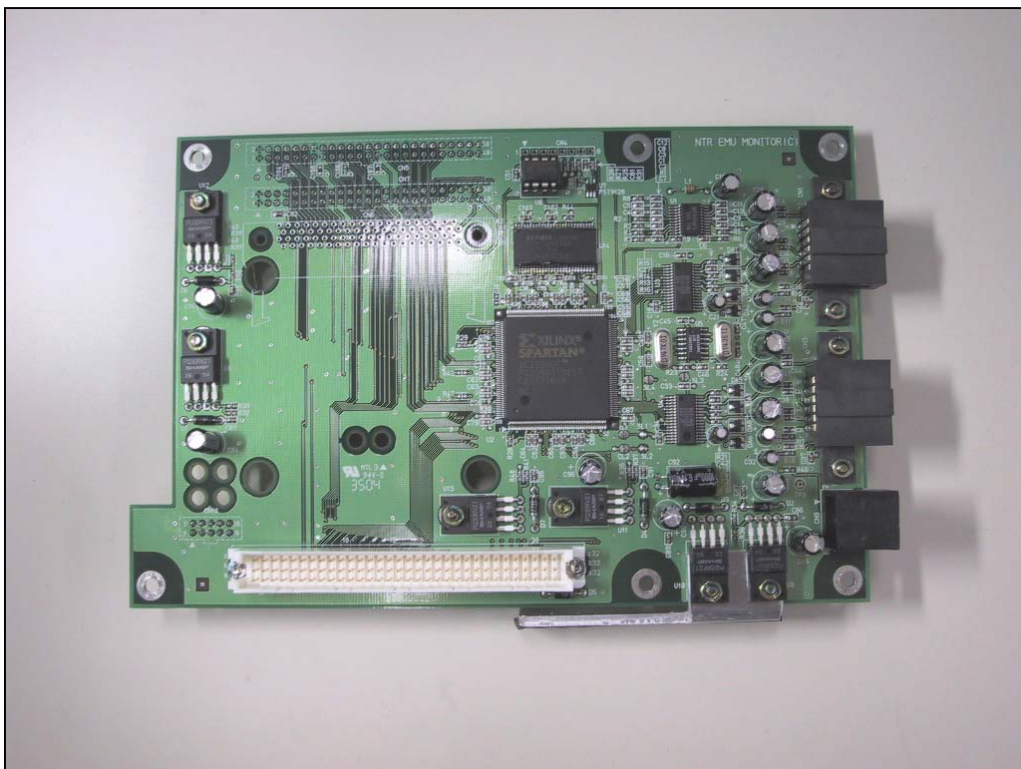
I/O motherboard (top view)



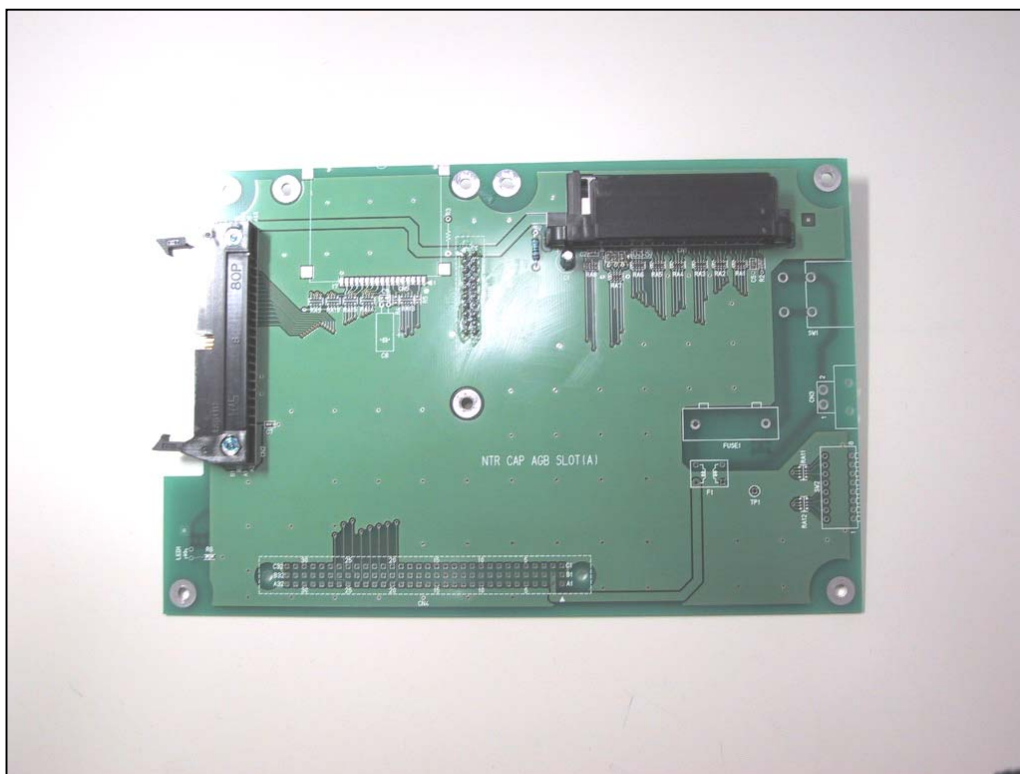
Top view motherboard



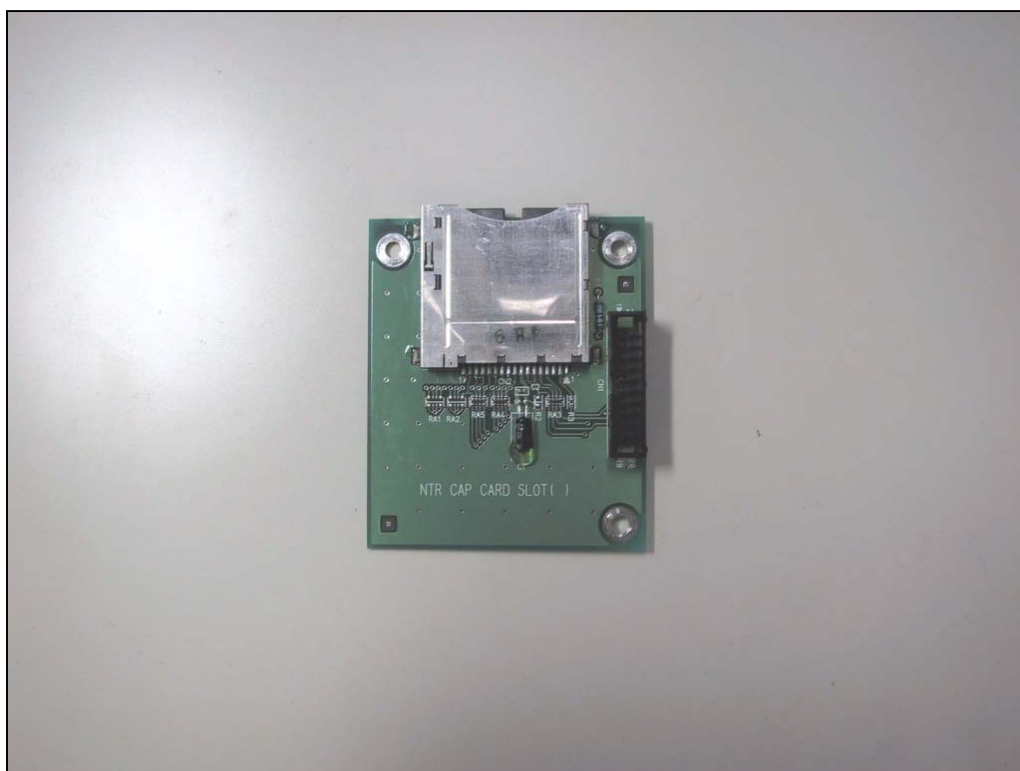
I/O motherboard (top view)



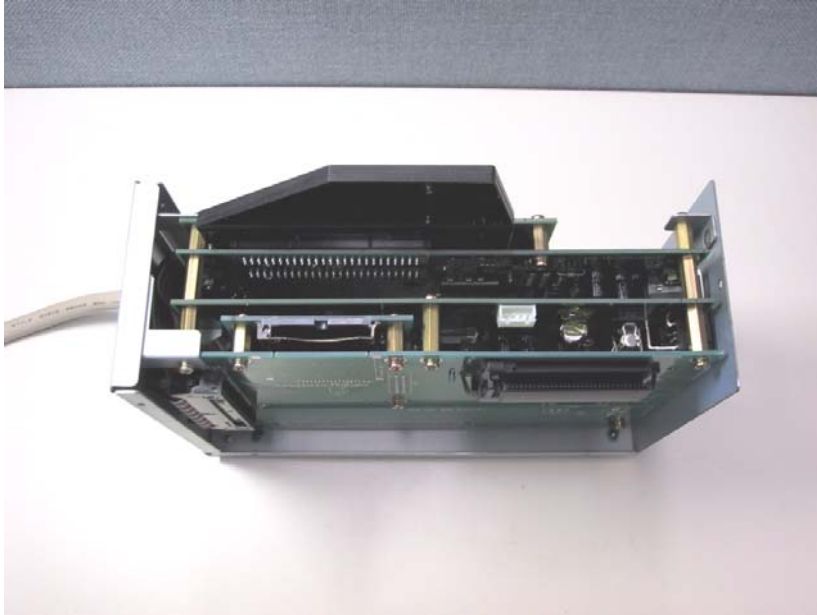
Cartbridge board



Memory card slot



Assemble picture top view



Assemble picture side view

