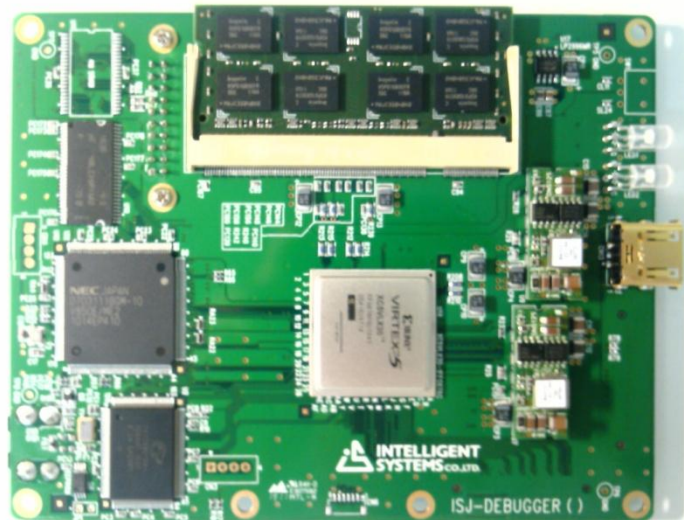
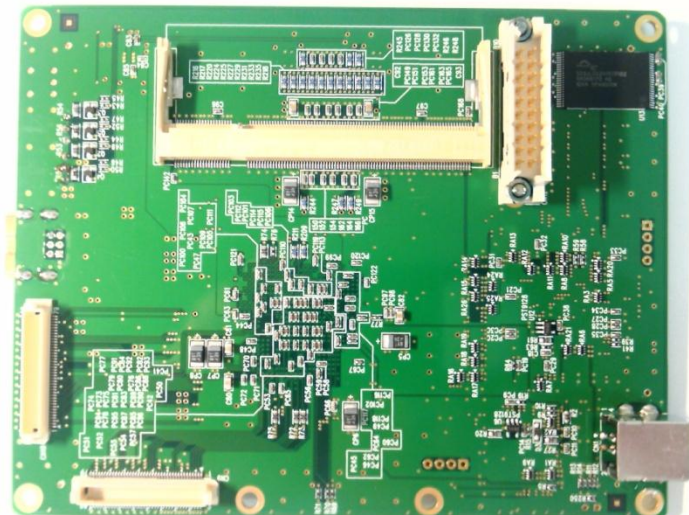


Internal Pictures

Front view (ISJ DEBUGGER PCB)



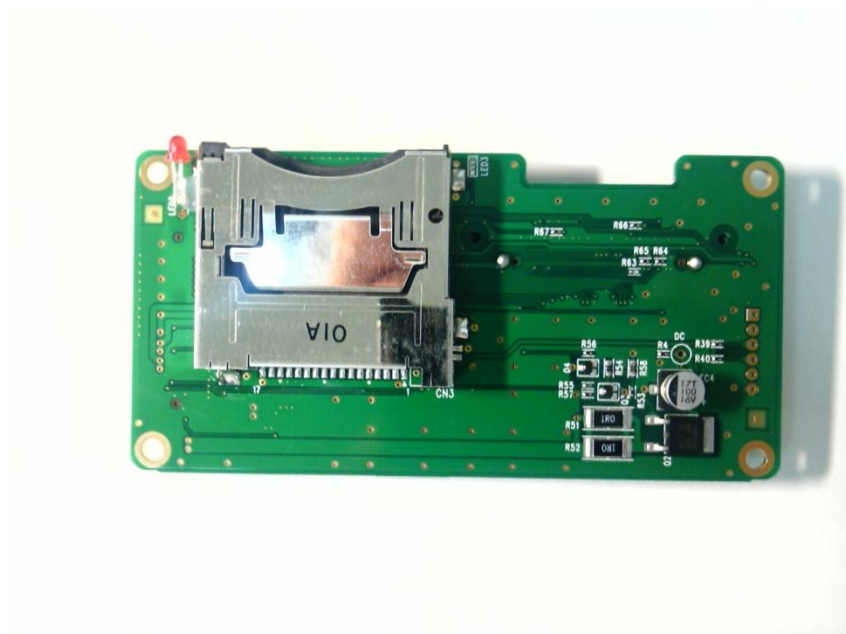
Reverse view (ISJ DEBUGGER PCB)



Front view (ISJ CARD PCB)



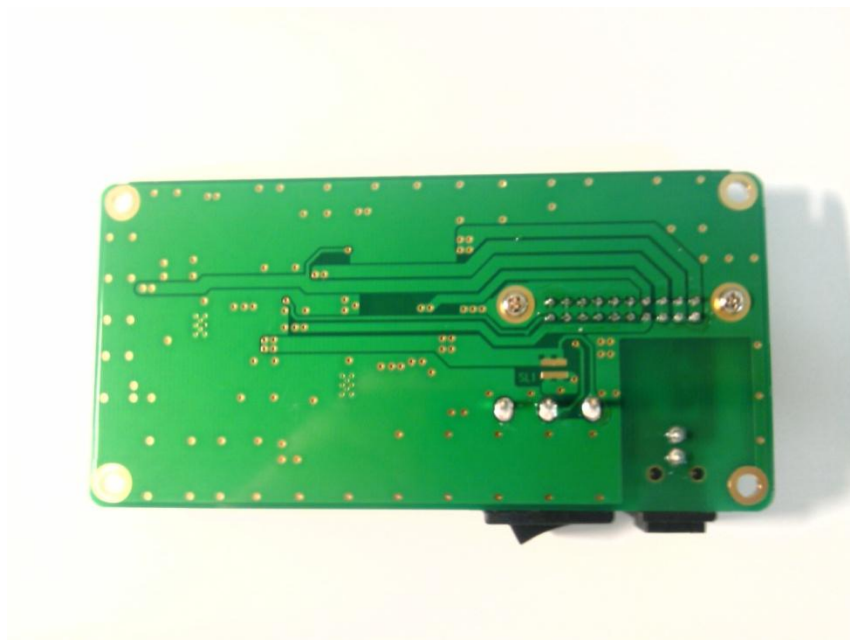
Reverse view (ISJ CARD PCB)



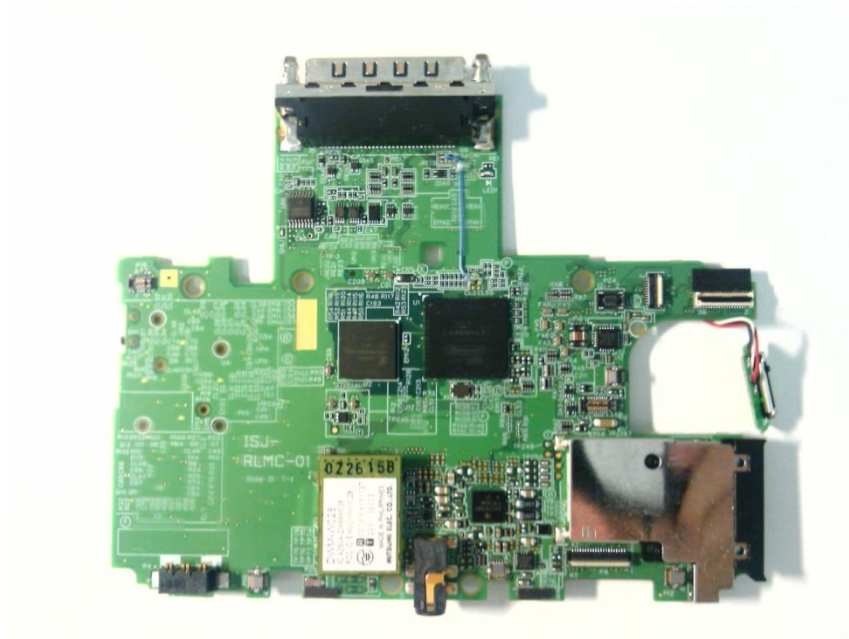
Front view (ISJ POW PCB)



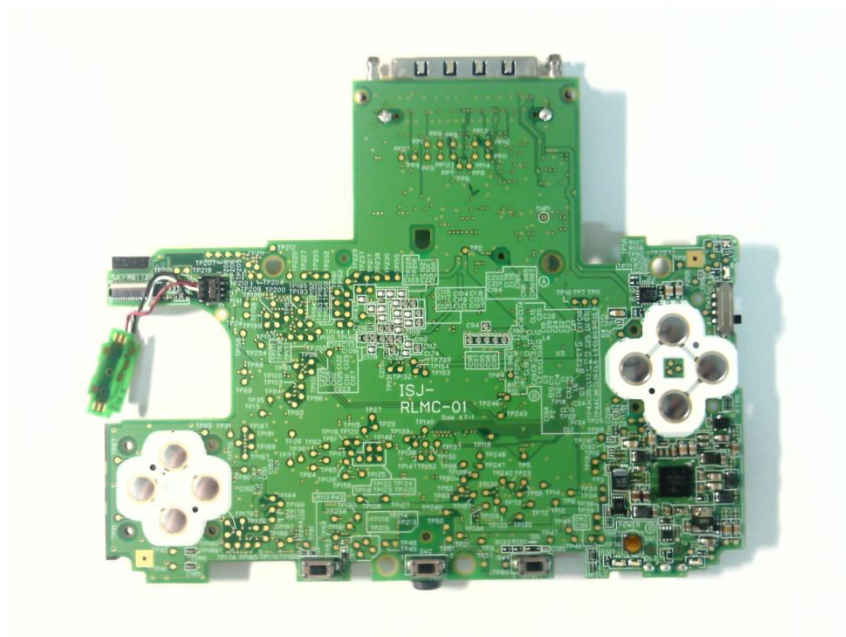
Reverse view (ISJ POW PCB)



Front view (ISJ-RLMC-01 PCB)



Reverse view (ISJ-RLMC-01 PCB)



Internal Pictures for Radio

Front view (Module)



Reverse view (Module with shielding)



Reverse view (Module without shielding)

