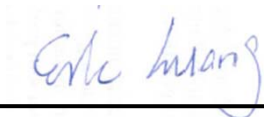


# FCC SAR Test Report

APPLICANT : ZTE CORPORATION  
EQUIPMENT : HSPA+ uFi  
BRAND NAME : ZTE  
MODEL NAME : R206-Z  
FCC ID : SRQR206-Z  
STANDARD : FCC 47 CFR Part 2 (2.1093)  
ANSI/IEEE C95.1-1992  
IEEE 1528-2003  
FCC OET Bulletin 65 Supplement C (Edition 01-01)

The product was completely tested on Jun. 22, 2013. We, SPORTON INTERNATIONAL (KUNSHAN) INC., would like to declare that the tested sample has been evaluated in accordance with the procedures and shown the compliance with the applicable technical standards.

The test results in this report apply exclusively to the tested model / sample. Without written approval of SPORTON INTERNATIONAL (KUNSHAN) INC., the test report shall not be reproduced except in full.



Reviewed by: Eric Huang / Deputy Manager



Approved by: Jones Tsai / Manager



**SPORTON INTERNATIONAL (KUNSHAN) INC.**  
No. 3-2, PingXiang Road, Kunshan, Jiangsu Province, P.R.C.



## **Table of Contents**

<b>1. Statement of Compliance .....</b>	<b>4</b>
<b>2. Administration Data .....</b>	<b>5</b>
2.1 Testing Laboratory.....	5
2.2 Applicant .....	5
2.3 Manufacturer .....	5
2.4 Application Details.....	5
<b>3. General Information .....</b>	<b>6</b>
3.1 Description of Equipment Under Test (EUT) .....	6
3.2 Maximum RF output power among production units .....	7
3.3 Applied Standard.....	8
3.4 Device Category and SAR Limits .....	8
3.5 Test Conditions.....	8
<b>4. Specific Absorption Rate (SAR).....</b>	<b>9</b>
4.1 Introduction .....	9
4.2 SAR Definition.....	9
<b>5. SAR Measurement System.....</b>	<b>10</b>
5.1 E-Field Probe .....	11
5.2 Data Acquisition Electronics (DAE) .....	11
5.3 Robot .....	12
5.4 Measurement Server.....	12
5.5 Phantom.....	13
5.6 Device Holder .....	13
5.7 Data Storage and Evaluation .....	14
5.8 Test Equipment List.....	16
<b>6. Tissue Simulating Liquids.....</b>	<b>17</b>
<b>7. System Verification Procedures .....</b>	<b>18</b>
7.1 Purpose of System Performance check .....	18
7.2 System Setup.....	18
7.3 SAR System Verification Results .....	19
<b>8. EUT Testing Position .....</b>	<b>20</b>
<b>9. Measurement Procedures .....</b>	<b>21</b>
9.1 Spatial Peak SAR Evaluation.....	21
9.2 Power Reference Measurement.....	22
9.3 Area & Zoom Scan Procedures.....	22
9.4 Volume Scan Procedures.....	23
9.5 SAR Averaged Methods.....	23
9.6 Power Drift Monitoring.....	23
<b>10. Conducted RF Output Power (Unit: dBm).....</b>	<b>24</b>
<b>11. DUT Antenna Location.....</b>	<b>26</b>
<b>12. SAR Test Results .....</b>	<b>28</b>
12.1 Test Records for Hotspot SAR Test.....	28
12.2 Repeated SAR Measurement .....	29
12.3 Highest SAR Plot .....	30
<b>13. Simultaneous Transmission Analysis.....</b>	<b>33</b>
13.1 Hotspot Exposure Conditions.....	33
<b>14. Uncertainty Assessment .....</b>	<b>34</b>
<b>15. References .....</b>	<b>36</b>
<b>Appendix A. Plots of System Performance Check</b>	
<b>Appendix B. Plots of SAR Measurement</b>	
<b>Appendix C. DASY Calibration Certificate</b>	
<b>Appendix D. Test Setup Photos</b>	



## Revision History

REPORT NO.	VERSION	DESCRIPTION	ISSUED DATE
FA361407	Rev. 01	Initial issue of report	Jul. 03, 2013

## 1. Statement of Compliance

The maximum results of Specific Absorption Rate (SAR) found during testing for **ZTE CORPORATION, DUT: HSPA+ uFi, Brand Name: ZTE, Model Name: R206-Z**, are as follows.

### <Highest Reported standalone SAR Summary>

Exposure Position	Frequency Band	Highest Reported 1g-SAR (W/kg)	Equipment Class	Highest Reported 1g-SAR (W/kg)
Hotspot (1cm Gap)	GSM850	1.29	PCB	1.29
	GSM1900	0.63		
	WLAN, 2412 - 2462 MHz	0.22	DTS	0.22

### <Highest Simultaneous transmission SAR>

Exposure Position	Frequency Band	Equipment Class	Highest Reported Simultaneous Transmission 1g-SAR (W/kg)
Hotspot (1cm Gap)	GSM850	PCB	1.51
	WLAN, 2412 - 2462 MHz	DTS	

This device is in compliance with Specific Absorption Rate (SAR) for general population/uncontrolled exposure limits (1.6 W/kg) specified in FCC 47 CFR part 2 (2.1093) and ANSI/IEEE C95.1-1992, and had been tested in accordance with the measurement methods and procedures specified in IEEE 1528-2003 and FCC OET Bulletin 65 Supplement C (Edition 01-01).

## **2. Administration Data**

### **2.1 Testing Laboratory**

Test Site	SPORTON INTERNATIONAL (KUNSHAN) INC.
Test Site Location	No. 3-2, PingXiang Road, Kunshan, Jiangsu Province, P.R.C. TEL: +86-0512-5790-0158 FAX: +86-0512-5790-0958

### **2.2 Applicant**

Company Name	ZTE CORPORATION
Address	ZTE Plaza, Keji Road South, Hi-Tech Industrial Park, Nanshan District, Shenzhen, Guangdong, 518057, P.R.China

### **2.3 Manufacturer**

Company Name	ZTE CORPORATION
Address	ZTE Plaza, Keji Road South, Hi-Tech Industrial Park, Nanshan District, Shenzhen, Guangdong, 518057, P.R.China

### **2.4 Application Details**

Date of Start during the Test	Jun. 22, 2013
Date of End during the Test	Jun. 22, 2013

### **3. General Information**

#### **3.1 Description of Equipment Under Test (EUT)**

Product Feature & Specification	
DUT	HSPA+ uFi
Brand Name	ZTE
Model Name	R206-Z
FCC ID	SRQR206-Z
IMEI Code	867307011041283
Wireless Technology and Frequency Range	GSM850: 824.2 MHz ~ 848.8 MHz GSM1900: 1850.2 MHz ~ 1909.8 MHz WLAN 2.4GHz Band: 2412 MHz ~ 2462 MHz
Type of Modulations	GPRS: GMSK EDGE: GMSK / 8PSK 802.11b: DSSS (DBPSK / DQPSK / CCK) 802.11g/n: OFDM (BPSK / QPSK / 16QAM / 64QAM)
Antenna Type	WWAN: PCB Antenna WLAN: PCB Antenna
HW Version	T01
SW Version	BD_R206V1.0
DUT Stage	Identical Prototype
<b>Remark:</b> 1. The above EUT's information was declared by manufacturer. Please refer to the specifications or user's manual for more detailed description. 2. Voice call is not supported.	

**3.2 Maximum RF output power among production units**

Mode	GSM 850	GSM 1900
	Average power(dBm)	
GPRS (GMSK, 1 Tx slot) – CS1	32	28.5
GPRS (GMSK, 2 Tx slots) – CS1	29.5	26.5
EDGE (GMSK, 1 Tx slot) – MCS1	32	28.5
EDGE (GMSK, 2 Tx slots) – MCS1	29	26.5
EDGE (GMSK, 3 Tx slots) – MCS1	27.5	25
EDGE (GMSK, 4 Tx slots) – MCS1	26	23.5
EDGE (8PSK, 1 Tx slot) – MCS5	27.5	25.5
EDGE (8PSK, 2 Tx slots) – MCS5	25	23
EDGE (8PSK, 3 Tx slots) – MCS5	23	21
EDGE (8PSK, 4 Tx slots) – MCS5	22	20

IEEE 802.11 Average power(dBm)				
Mode/Band	a	b	g	n-HT20
WLAN 2.4GHz		15	13	14

### 3.3 Applied Standard

The Specific Absorption Rate (SAR) testing specification, method, and procedure for this device is in accordance with the following standards:

- FCC 47 CFR Part 2 (2.1093)
- ANSI/IEEE C95.1-1992
- IEEE 1528-2003
- FCC OET Bulletin 65 Supplement C (Edition 01-01)
- FCC KDB 447498 D01 v05r01
- FCC KDB 248227 D01 v01r02
- FCC KDB 941225 D03 v01
- FCC KDB 941225 D06 v01r01
- FCC KDB 865664 D01 v01

### 3.4 Device Category and SAR Limits

This device belongs to portable device category because its radiating structure is allowed to be used within 20 centimeters of the body of the user. Limit for General Population/Uncontrolled exposure should be applied for this device, it is 1.6 W/kg as averaged over any 1 gram of tissue.

### 3.5 Test Conditions

#### 3.5.1 Ambient Condition

Ambient Temperature	20 to 24 °C
Humidity	< 60 %

#### 3.5.2 Test Configuration

For WWAN SAR testing, the device was controlled by using a base station emulator. Communication between the device and the emulator was established by air link. The distance between the EUT and the antenna of the emulator is larger than 50 cm and the output power radiated from the emulator antenna is at least 30 dB smaller than the output power of EUT.

During WLAN SAR testing EUT is configured with the WLAN continuous TX tool, and the transmission duty factor was monitored on the spectrum analyzer with zero-span setting

For WLAN SAR testing, WLAN engineering testing software installed on the EUT can provide continuous transmitting RF signal.



## **4. Specific Absorption Rate (SAR)**

### **4.1 Introduction**

SAR is related to the rate at which energy is absorbed per unit mass in an object exposed to a radio field. The SAR distribution in a biological body is complicated and is usually carried out by experimental techniques or numerical modeling. The standard recommends limits for two tiers of groups, occupational/controlled and general population/uncontrolled, based on a person's awareness and ability to exercise control over his or her exposure. In general, occupational/controlled exposure limits are higher than the limits for general population/uncontrolled.

### **4.2 SAR Definition**

The SAR definition is the time derivative (rate) of the incremental energy (dW) absorbed by (dissipated in) an incremental mass (dm) contained in a volume element (dv) of a given density ( $\rho$ ). The equation description is as below:

$$SAR = \frac{d}{dt} \left( \frac{dW}{dm} \right) = \frac{d}{dt} \left( \frac{dW}{\rho dv} \right)$$

SAR is expressed in units of Watts per kilogram (W/kg)

SAR measurement can be either related to the temperature elevation in tissue by

$$SAR = C \left( \frac{\delta T}{\delta t} \right)$$

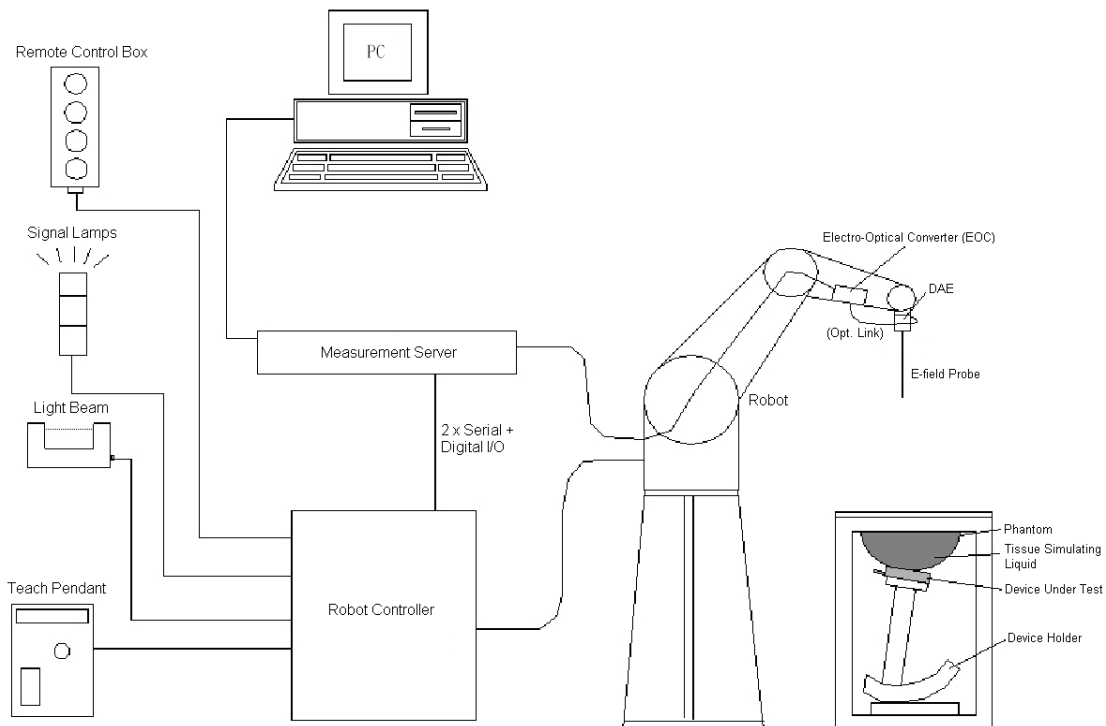
Where: C is the specific heat capacity,  $\delta T$  is the temperature rise and  $\delta t$  is the exposure duration, or related to the electrical field in the tissue by

$$SAR = \frac{\sigma |E|^2}{\rho}$$

Where:  $\sigma$  is the conductivity of the tissue,  $\rho$  is the mass density of the tissue and E is the RMS electrical field strength.

However for evaluating SAR of low power transmitter, electrical field measurement is typically applied.

## 5. SAR Measurement System



**Fig 5.1 SPEAG DASY System Configurations**

The DASY system for performance compliance tests is illustrated above graphically. This system consists of the following items:

- A standard high precision 6-axis robot with controller, a teach pendant and software
- A data acquisition electronic (DAE) attached to the robot arm extension
- A dosimetric probe equipped with an optical surface detector system
- The electro-optical converter (EOC) performs the conversion between optical and electrical signals
- A measurement server performs the time critical tasks such as signal filtering, control of the robot operation and fast movement interrupts.
- A probe alignment unit which improves the accuracy of the probe positioning
- A computer operating Windows XP
- DASY software
- Remote control with teach pendant and additional circuitry for robot safety such as warning lamps, etc.
- The SAM twin phantom
- A device holder
- Tissue simulating liquid
- Dipole for evaluating the proper functioning of the system


Component details are described in in the following sub-sections.

## 5.1 E-Field Probe

The SAR measurement is conducted with the dosimetric probe (manufactured by SPEAG). The probe is specially designed and calibrated for use in liquid with high permittivity. The dosimetric probe has special calibration in liquid at different frequency. This probe has a built in optical surface detection system to prevent from collision with phantom.

### 5.1.1 E-Field Probe Specification

#### <EX3DV4 Probe>

<b>Construction</b>	Symmetrical design with triangular core Built-in shielding against static charges PEEK enclosure material (resistant to organic solvents, e.g., DGBE)	
<b>Frequency</b>	10 MHz to 6 GHz; Linearity: $\pm 0.2$ dB	
<b>Directivity</b>	$\pm 0.3$ dB in HSL (rotation around probe axis) $\pm 0.5$ dB in tissue material (rotation normal to probe axis)	
<b>Dynamic Range</b>	10 $\mu$ W/g to 100 mW/g; Linearity: $\pm 0.2$ dB (noise: typically $< 1$ $\mu$ W/g)	
<b>Dimensions</b>	Overall length: 330 mm (Tip: 20 mm) Tip diameter: 2.5 mm (Body: 12 mm) Typical distance from probe tip to dipole centers: 1 mm	

**Fig 5.2 Photo of EX3DV4**

### 5.1.2 E-Field Probe Calibration

Each probe needs to be calibrated according to a dosimetric assessment procedure with accuracy better than  $\pm 10\%$ . The spherical isotropy shall be evaluated and within  $\pm 0.25$ dB. The sensitivity parameters (NormX, NormY, and NormZ), the diode compression parameter (DCP) and the conversion factor (ConvF) of the probe are tested. The calibration data can be referred to appendix C of this report.

## 5.2 Data Acquisition Electronics (DAE)

The data acquisition electronics (DAE) consists of a highly sensitive electrometer-grade preamplifier with auto-zeroing, a channel and gain-switching multiplexer, a fast 16 bit AD-converter and a command decoder and control logic unit. Transmission to the measurement server is accomplished through an optical downlink for data and status information as well as an optical uplink for commands and the clock. The input impedance of the DAE is 200 MOhm; the inputs are symmetrical and floating. Common mode rejection is above 80 dB.



**Fig 5.3 Photo of DAE**

### **5.3 Robot**

The SPEAG DASY system uses the high precision robots (DASY5: TX90XL) type from Stäubli SA (France). For the 6-axis controller system, the robot controller version (DASY5: CS8c) from Stäubli is used. The Stäubli robot series have many features that are important for our application:

- High precision (repeatability  $\pm 0.035$  mm)
- High reliability (industrial design)
- Jerk-free straight movements
- Low ELF interference (the closed metallic construction shields against motor control fields)



**Fig 5.4 Photo of DASY5**

### **5.4 Measurement Server**

The measurement server is based on a PC/104 CPU board with CPU (DASY5: 400 MHz, Intel Celeron), chipdisk (DASY5: 128 MB), RAM (DASY5: 128 MB). The necessary circuits for communication with the DAE electronic box, as well as the 16 bit AD converter system for optical detection and digital I/O interface are contained on the DASY I/O board, which is directly connected to the PC/104 bus of the CPU board.

The measurement server performs all the real-time data evaluation for field measurements and surface detection, controls robot movements and handles safety operations.



**Fig 5.5 Photo of Server for DASY5**

## 5.5 Phantom

### <SAM Twin Phantom>

<b>Shell Thickness</b>	2 ± 0.2 mm; Center ear point: 6 ± 0.2 mm
<b>Filling Volume</b>	Approx. 25 liters
<b>Dimensions</b>	Length: 1000 mm; Width: 500 mm; Height: adjustable feet
<b>Measurement Areas</b>	Left Hand, Right Hand, Flat Phantom



**Fig 5.6 Photo of SAM Phantom**

The bottom plate contains three pair of bolts for locking the device holder. The device holder positions are adjusted to the standard measurement positions in the three sections. A white cover is provided to tap the phantom during off-periods to prevent water evaporation and changes in the liquid parameters. On the phantom top, three reference markers are provided to identify the phantom position with respect to the robot.

## 5.6 Device Holder

### <Device Holder for SAM Twin Phantom>

The SAR in the phantom is approximately inversely proportional to the square of the distance between the source and the liquid surface. For a source at 5 mm distance, a positioning uncertainty of ± 0.5 mm would produce a SAR uncertainty of ± 20 %. Accurate device positioning is therefore crucial for accurate and repeatable measurements. The positions in which the devices must be measured are defined by the standards.

The DASY device holder is designed to cope with different positions given in the standard. It has two scales for the device rotation (with respect to the body axis) and the device inclination (with respect to the line between the ear reference points). The rotation center for both scales is the ear reference point (ERP). Thus the device needs no repositioning when changing the angles.

The DASY device holder is constructed of low-loss POM material having the following dielectric parameters: relative permittivity  $\epsilon = 3$  and loss tangent  $\delta = 0.02$ . The amount of dielectric material has been reduced in the closest vicinity of the device, since measurements have suggested that the influence of the clamp on the test results could thus be lowered.



**Fig 5.7 Device Holder**

## 5.7 Data Storage and Evaluation

### 5.7.1 Data Storage

The DASY software stores the assessed data from the data acquisition electronics as raw data (in microvolt readings from the probe sensors), together with all the necessary software parameters for the data evaluation (probe calibration data, liquid parameters and device frequency and modulation data) in measurement files. The post-processing software evaluates the desired unit and format for output each time the data is visualized or exported. This allows verification of the complete software setup even after the measurement and allows correction of erroneous parameter settings. For example, if a measurement has been performed with an incorrect crest factor parameter in the device setup, the parameter can be corrected afterwards and the data can be reevaluated.

The measured data can be visualized or exported in different units or formats, depending on the selected probe type (e.g., [V/m], [A/m], [mW/g]). Some of these units are not available in certain situations or give meaningless results, e.g., a SAR-output in a non-lose media, will always be zero. Raw data can also be exported to perform the evaluation with other software packages.

### 5.7.2 Data Evaluation

The DASY post-processing software (SEMCAD) automatically executes the following procedures to calculate the field units from the microvolt readings at the probe connector. The parameters used in the evaluation are stored in the configuration modules of the software :

<b>Probe parameters :</b>	- Sensitivity	Norm <sub>i</sub> , a <sub>i0</sub> , a <sub>i1</sub> , a <sub>i2</sub>
	- Conversion factor	ConvF <sub>i</sub>
	- Diode compression point	dcp <sub>i</sub>
<b>Device parameters :</b>	- Frequency	f
	- Crest factor	cf
<b>Media parameters :</b>	- Conductivity	$\sigma$
	- Density	$\rho$

These parameters must be set correctly in the software. They can be found in the component documents or they can be imported into the software from the configuration files issued for the DASY components. In the direct measuring mode of the multi-meter option, the parameters of the actual system setup are used. In the scan visualization and export modes, the parameters stored in the corresponding document files are used.

The first step of the evaluation is a linearization of the filtered input signal to account for the compression characteristics of the detector diode. The compensation depends on the input signal, the diode type and the DC-transmission factor from the diode to the evaluation electronics. If the exciting field is pulsed, the crest factor of the signal must be known to correctly compensate for peak power.

The formula for each channel can be given as :

$$V_i = U_i + U_i^2 \cdot \frac{cf}{dcp_i}$$

with  $V_i$  = compensated signal of channel i, (i = x, y, z)  
 $U_i$  = input signal of channel i, (i = x, y, z)  
 $cf$  = crest factor of exciting field (DASY parameter)  
 $dcp_i$  = diode compression point (DASY parameter)

From the compensated input signals, the primary field data for each channel can be evaluated :

$$\text{E-field Probes : } E_i = \sqrt{\frac{V_i}{\text{Norm}_i \cdot \text{ConvF}}}$$

$$\text{H-field Probes : } H_i = \sqrt{V_i} \cdot \frac{a_{i0} + a_{i1}f + a_{i2}f^2}{f}$$

with  $V_i$  = compensated signal of channel i, (i = x, y, z)  
 $\text{Norm}_i$  = sensor sensitivity of channel i, (i = x, y, z),  $\mu\text{V}/(\text{V/m})^2$  for E-field Probes  
 $\text{ConvF}$  = sensitivity enhancement in solution  
 $a_{ij}$  = sensor sensitivity factors for H-field probes  
 $f$  = carrier frequency [GHz]  
 $E_i$  = electric field strength of channel i in V/m  
 $H_i$  = magnetic field strength of channel i in A/m

The RSS value of the field components gives the total field strength (Hermitian magnitude) :

$$E_{\text{tot}} = \sqrt{E_x^2 + E_y^2 + E_z^2}$$

The primary field data are used to calculate the derived field units.

$$\text{SAR} = E_{\text{tot}}^2 \cdot \frac{\sigma}{\rho \cdot 1000}$$

with SAR = local specific absorption rate in mW/g  
 $E_{\text{tot}}$  = total field strength in V/m  
 $\sigma$  = conductivity in [mho/m] or [Siemens/m]  
 $\rho$  = equivalent tissue density in  $\text{g/cm}^3$

Note that the density is set to 1, to account for actual head tissue density rather than the density of the tissue simulating liquid.

### 5.8 Test Equipment List

Manufacturer	Name of Equipment	Type/Model	Serial Number	Calibration	
				Last Cal.	Due Date
SPEAG	835MHz System Validation Kit	D835V2	4d091	Nov. 18, 2011	Nov. 16, 2013
SPEAG	1900MHz System Validation Kit	D1900V2	5d118	Nov. 21, 2011	Nov. 16, 2013
SPEAG	2450MHz System Validation Kit	D2450V2	736	Jul. 25, 2011	Jul. 24, 2013
SPEAG	Data Acquisition Electronics	DAE4	679	Jan. 16, 2013	Jan. 15, 2014
SPEAG	Dosimetric E-Field Probe	EX3DV4	3820	Dec.10, 2012	Dec. 09, 2013
SPEAG	SAM Twin Phantom	QD 000 P40 CB	TP-1477	NCR	NCR
SPEAG	SAM Twin Phantom	QD 000 P40 CB	TP-1479	NCR	NCR
SPEAG	Phone Positioner	N/A	N/A	NCR	NCR
Anritsu	Radio communication analyzer	MT8820C	6201074235	Nov. 29, 2012	Nov. 28, 2013
Agilent	Wireless Communication Test Set	E5515C	MY48367160	Oct. 25, 2012	Oct. 24, 2013
R&S	Universal Radio Communication Tester	CMU200	116456	Sep. 19, 2012	Sep. 18, 2013
Agilent	ENA Series Network Analyzer	E5071C	MY46106933	Aug. 31, 2012	Aug. 30, 2013
R&S	Signal Generator	SMR40	100455	Jan. 18, 2013	Jan. 17, 2014
Agilent	Power Meter	E4416A	MY45101555	Aug. 22, 2012	Aug. 21, 2013
Agilent	Power Sensor	E9327A	MY44421198	Aug. 22, 2012	Aug. 21, 2013
Agilent	Dual Directional Coupler	778D	50422	Note 4	
Woken	Attenuator 1	WK0602-XX	N/A	Note 4	
PE	Attenuator 2	PE7005-10	N/A	Note 4	
PE	Attenuator 3	PE7005- 3	N/A	Note 4	
Agilent	Dielectric Probe Kit	85070D	US01440205	Note 5	
AR	Power Amplifier	5S1G4M2	328767	Note 6	
R&S	Spectrum Analyzer	FSP30	101399	May 23, 2013	May 22, 2014

**Table 5.1 Test Equipment List**

**Note:**

1. The calibration certificate of DASY can be referred to appendix C of this report.
2. Referring to KDB 865664 D01v01, the dipole calibration interval can be extended to 3 years with justification. The dipoles are also not physically damaged, or repaired during the interval.
3. The justification data of dipole D835V2, SN: 4d091, D1900V2, SN: 5d118, D2450V2, SN: 736, can be found in appendix C. The return loss is < -20dB, within 20% of prior calibration, the impedance is within 5 ohm of prior calibration.
4. The Insertion Loss calibration of Dual Directional Coupler and Attenuator were characterized via the network analyzer and compensated during system check.
5. The dielectric probe kit was calibrated via the network analyzer, with the specified procedure (calibrated in pure water) and calibration kit (standard) short circuit, before the dielectric measurement. The specific procedure and calibration kit are provided by Agilent.
6. In system check we need to monitor the level on the power meter, and adjust the power amplifier level to have precise power level to the dipole; the measured SAR will be normalized to 1W input power according to the ratio of 1W to the input power to the dipole. For system check, the calibration of the power amplifier is deemed not critically required for correct measurement; the power meter is critical and we do have calibration for it
7. Attenuator 1 insertion loss is calibrated by the network Analyzer, which the calibration is valid, before system check.



## 6. Tissue Simulating Liquids

For the measurement of the field distribution inside the SAM phantom with DASY, the phantom must be filled with around 25 liters of homogeneous body tissue simulating liquid. For head SAR testing, the liquid height from the ear reference point (ERP) of the phantom to the liquid top surface is larger than 15 cm, which is shown in Fig. 6.1. For body SAR testing, the liquid height from the center of the flat phantom to the liquid top surface is larger than 15 cm, which is shown in Fig. 6.2.



**Fig 6.1 Photo of Liquid Height for Body SAR**

The following table gives the recipes for tissue simulating liquid.

Frequency (MHz)	Water (%)	Sugar (%)	Cellulose (%)	Salt (%)	Preventol (%)	DGBE (%)	Conductivity ( $\sigma$ )	Permittivity ( $\epsilon_r$ )
<b>For Body</b>								
835	50.8	48.2	0	0.9	0.1	0	0.97	55.2
1800, 1900, 2000	70.2	0	0	0.4	0	29.4	1.52	53.3
2450	68.6	0	0	0	0	31.4	1.95	52.7

**Table 6.1 Recipes of Tissue Simulating Liquid**

The dielectric parameters of the liquids were verified prior to the SAR evaluation using an Agilent 85070D Dielectric Probe Kit and an Agilent Network Analyzer.

The following table shows the measuring results for simulating liquid.

Frequency (MHz)	Liquid Type	Liquid Temp. (°C)	Conductivity ( $\sigma$ )	Permittivity ( $\epsilon_r$ )	Conductivity Target ( $\sigma$ )	Permittivity Target ( $\epsilon_r$ )	Delta ( $\sigma$ ) (%)	Delta ( $\epsilon_r$ ) (%)	Limit (%)	Date
835	Body	21.1	0.983	54.851	0.97	55.2	1.34	-0.63	±5	Jun. 22, 2013
1900	Body	21.3	1.551	53.275	1.52	53.3	2.04	-0.05	±5	Jun. 22, 2013
2450	Body	21.6	1.942	50.952	1.95	52.7	-0.41	-3.32	±5	Jun. 22, 2013

**Table 6.2 Measuring Results for Simulating Liquid**

## 7. System Verification Procedures

Each DASY system is equipped with one or more system validation kits. These units, together with the predefined measurement procedures within the DASY software, enable the user to conduct the system performance check and system validation. System validation kit includes a dipole, tripod holder to fix it underneath the flat phantom and a corresponding distance holder.

### 7.1 Purpose of System Performance check

The system performance check verifies that the system operates within its specifications. System and operator errors can be detected and corrected. It is recommended that the system performance check be performed prior to any usage of the system in order to guarantee reproducible results. The system performance check uses normal SAR measurements in a simplified setup with a well characterized source. This setup was selected to give a high sensitivity to all parameters that might fail or vary over time. The system check does not intend to replace the calibration of the components, but indicates situations where the system uncertainty is exceeded due to drift or failure.

### 7.2 System Setup

In the simplified setup for system evaluation, the EUT is replaced by a calibrated dipole and the power source is replaced by a continuous wave that comes from a signal generator. The calibrated dipole must be placed beneath the flat phantom section of the SAM twin phantom with the correct distance holder. The distance holder should touch the phantom surface with a light pressure at the reference marking and be oriented parallel to the long side of the phantom. The equipment setup is shown below:

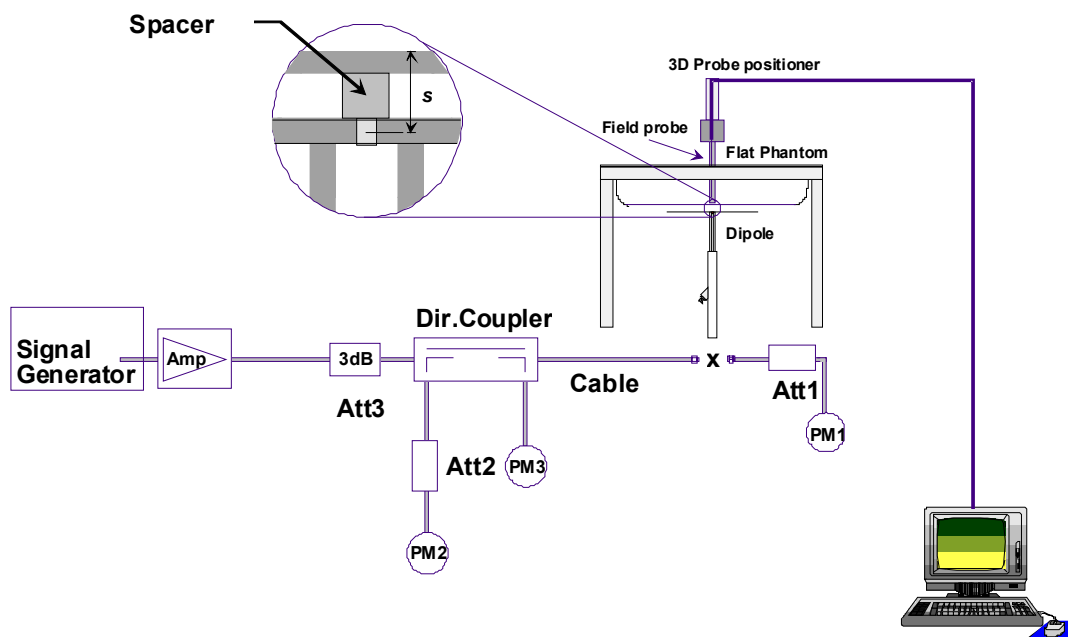


Fig 7.1 System Setup for System Evaluation

1. Signal Generator
2. Amplifier
3. Directional Coupler
4. Power Meter
5. Calibrated Dipole


**Fig 7.2 Photo of Dipole Setup**

### **7.3 SAR System Verification Results**

Comparing to the original SAR value provided by SPEAG, the verification data should be within its specification of 10 %. Table 7.1 shows the target SAR and measured SAR after normalized to 1W input power. The table below indicates the system performance check can meet the variation criterion and the plots can be referred to Appendix A of this report.

Date	Frequency (MHz)	Liquid Type	Power fed onto reference dipole (mW)	Targeted SAR <sub>1g</sub> (W/kg)	Measured SAR <sub>1g</sub> (W/kg)	Normalized SAR <sub>1g</sub> (W/kg)	Deviation (%)
Jun. 22, 2013	835	Body	250	9.42	2.35	9.4	-0.21
Jun. 22, 2013	1900	Body	250	41.8	10.9	43.6	4.31
Jun. 22, 2013	2450	Body	250	52.3	12.9	51.6	-1.34

**Table 7.1 Target and Measurement SAR after Normalized**

## **8. EUT Testing Position**

This EUT was tested in six different positions. They are Front/Back/Right Side/Left Side/Top Side/Bottom Side of the EUT with phantom 1 cm gap, as illustrated below; please refer to Appendix D for the test setup photos.

### **8.1 Hotspot Position**

- (a) To position the device parallel to the phantom surface with all sides.
- (b) To adjust the device parallel to the flat phantom.
- (c) To adjust the distance between the device and the flat phantom to 1.0cm.

#### **<EUT Setup Photos>**

Please refer to Appendix D for the test setup photos.

## 9. Measurement Procedures

The measurement procedures are as follows:

### <Conducted power measurement>

- (a) For WWAN power measurement, use base station simulator to configure EUT WWAN transmission in conducted connection with RF cable, at maximum power in each supported wireless interface and frequency band.
- (b) Read the WWAN RF power level from the base station simulator.
- (c) For WLAN power measurement, use engineering software to configure EUT WLAN continuously transmission, at maximum RF power in each supported wireless interface and frequency band
- (d) Connect EUT RF port through RF cable to the power meter, and measure WLAN output power

### <SAR measurement>

- (a) Use base station simulator to configure EUT WWAN transmission in radiated connection, and engineering software to configure EUT WLAN continuously transmission, at maximum RF power, in the highest power channel.
- (b) Place the EUT in the positions as Appendix D demonstrates.
- (c) Set scan area, grid size and other setting on the DASY software.
- (d) Measure SAR results for the highest power channel on each testing position.
- (e) Find out the largest SAR result on these testing positions of each band
- (f) Measure SAR results for other channels in worst SAR testing position if the reported SAR of highest power channel is larger than 0.8 W/kg

According to the test standard, the recommended procedure for assessing the peak spatial-average SAR value consists of the following steps:

- (a) Power reference measurement
- (b) Area scan
- (c) Zoom scan
- (d) Power drift measurement

### 9.1 Spatial Peak SAR Evaluation

The procedure for spatial peak SAR evaluation has been implemented according to the test standard. It can be conducted for 1g and 10g, as well as for user-specific masses. The DASY software includes all numerical procedures necessary to evaluate the spatial peak SAR value.

The base for the evaluation is a "cube" measurement. The measured volume must include the 1g and 10g cubes with the highest averaged SAR values. For that purpose, the center of the measured volume is aligned to the interpolated peak SAR value of a previously performed area scan.

The entire evaluation of the spatial peak values is performed within the post-processing engine (SEMCAD). The system always gives the maximum values for the 1g and 10g cubes. The algorithm to find the cube with highest averaged SAR is divided into the following stages:

- (a) Extraction of the measured data (grid and values) from the Zoom Scan
- (b) Calculation of the SAR value at every measurement point based on all stored data (A/D values and measurement parameters)
- (c) Generation of a high-resolution mesh within the measured volume
- (d) Interpolation of all measured values from the measurement grid to the high-resolution grid
- (e) Extrapolation of the entire 3-D field distribution to the phantom surface over the distance from sensor to surface
- (f) Calculation of the averaged SAR within masses of 1g and 10g

## 9.2 Power Reference Measurement

The Power Reference Measurement and Power Drift Measurements are for monitoring the power drift of the device under test in the batch process. The minimum distance of probe sensors to surface determines the closest measurement point to phantom surface. This distance cannot be smaller than the distance of sensor calibration points to probe tip as defined in the probe properties.

## 9.3 Area & Zoom Scan Procedures

First Area Scan is used to locate the approximate location(s) of the local peak SAR value(s). The measurement grid within an Area Scan is defined by the grid extent, grid step size and grid offset. Next, in order to determine the EM field distribution in a three-dimensional spatial extension, Zoom Scan is required. The Zoom Scan is performed around the highest E-field value to determine the averaged SAR-distribution over 10 g. Area scan and zoom scan resolution setting follows KDB 865664 D01v01 quoted below.

When the 1-g SAR of the highest peak is within 2 dB of the SAR limit, additional zoom scans are required for other peaks within 2 dB of the highest peak that have not been included in any zoom scan to ensure there is no increase in SAR.

			$\leq 3$ GHz	$> 3$ GHz
Maximum distance from closest measurement point (geometric center of probe sensors) to phantom surface			$5 \pm 1$ mm	$\frac{1}{2} \delta \ln(2) \pm 0.5$ mm
Maximum probe angle from probe axis to phantom surface normal at the measurement location			$30^\circ \pm 1^\circ$	$20^\circ \pm 1^\circ$
Maximum area scan spatial resolution: $\Delta x_{Area}$ , $\Delta y_{Area}$			$\leq 2$ GHz: $\leq 15$ mm 2 – 3 GHz: $\leq 12$ mm	3 – 4 GHz: $\leq 12$ mm 4 – 6 GHz: $\leq 10$ mm
			When the x or y dimension of the test device, in the measurement plane orientation, is smaller than the above, the measurement resolution must be $\leq$ the corresponding x or y dimension of the test device with at least one measurement point on the test device.	
Maximum zoom scan spatial resolution: $\Delta x_{Zoom}$ , $\Delta y_{Zoom}$			$\leq 2$ GHz: $\leq 8$ mm 2 – 3 GHz: $\leq 5$ mm*	3 – 4 GHz: $\leq 5$ mm* 4 – 6 GHz: $\leq 4$ mm*
Maximum zoom scan spatial resolution, normal to phantom surface	uniform grid: $\Delta z_{Zoom}(n)$		$\leq 5$ mm	3 – 4 GHz: $\leq 4$ mm 4 – 5 GHz: $\leq 3$ mm 5 – 6 GHz: $\leq 2$ mm
	graded grid	$\Delta z_{Zoom}(1)$ : between 1 <sup>st</sup> two points closest to phantom surface	$\leq 4$ mm	3 – 4 GHz: $\leq 3$ mm 4 – 5 GHz: $\leq 2.5$ mm 5 – 6 GHz: $\leq 2$ mm
		$\Delta z_{Zoom}(n>1)$ : between subsequent points	$\leq 1.5 \cdot \Delta z_{Zoom}(n-1)$	
Minimum zoom scan volume	x, y, z		$\geq 30$ mm	3 – 4 GHz: $\geq 28$ mm 4 – 5 GHz: $\geq 25$ mm 5 – 6 GHz: $\geq 22$ mm
Note: $\delta$ is the penetration depth of a plane-wave at normal incidence to the tissue medium; see draft standard IEEE P1528-2011 for details.				
* When zoom scan is required and the <u>reported</u> SAR from the area scan based 1-g SAR estimation procedures of KDB 447498 is $\leq 1.4$ W/kg, $\leq 8$ mm, $\leq 7$ mm and $\leq 5$ mm zoom scan resolution may be applied, respectively, for 2 GHz to 3 GHz, 3 GHz to 4 GHz and 4 GHz to 6 GHz.				

#### **9.4 Volume Scan Procedures**

The volume scan is used for assess overlapping SAR distributions for antennas transmitting in different frequency bands. It is equivalent to an oversized zoom scan used in standalone measurements. The measurement volume will be used to enclose all the simultaneous transmitting antennas. For antennas transmitting simultaneously in different frequency bands, the volume scan is measured separately in each frequency band. In order to sum correctly to compute the 1g aggregate SAR, the EUT remain in the same test position for all measurements and all volume scan use the same spatial resolution and grid spacing. When all volume scan were completed, the software, SEMCAD postprocessor can combine and subsequently superpose these measurement data to calculating the multiband SAR.

#### **9.5 SAR Averaged Methods**

In DASY, the interpolation and extrapolation are both based on the modified Quadratic Shepard's method. The interpolation scheme combines a least-square fitted function method and a weighted average method which are the two basic types of computational interpolation and approximation.

Extrapolation routines are used to obtain SAR values between the lowest measurement points and the inner phantom surface. The extrapolation distance is determined by the surface detection distance and the probe sensor offset. The uncertainty increases with the extrapolation distance. To keep the uncertainty within 1% for the 1 g and 10 g cubes, the extrapolation distance should not be larger than 5 mm.

#### **9.6 Power Drift Monitoring**

All SAR testing is under the EUT install full charged battery and transmit maximum output power. In DASY measurement software, the power reference measurement and power drift measurement procedures are used for monitoring the power drift of EUT during SAR test. Both these procedures measure the field at a specified reference position before and after the SAR testing. The software will calculate the field difference in dB. If the power drifts more than 5%, the SAR will be retested.



## 10. Conducted RF Output Power (Unit: dBm)

### <GSM Conducted Power>

**Note:**

- Per KDB 447498 D01v05, the maximum output power channel is used for SAR testing and for further SAR test reduction.
- The EUT do not support DTM function.

Band GSM850	Burst Average Power (dBm)			Frame-Average Power (dBm)		
TX Channel	128	189	251	128	189	251
Frequency (MHz)	824.2	836.4	848.8	824.2	836.4	848.8
GPRS (GMSK, 1 Tx slot) – CS1	31.76	31.92	31.98	22.76	22.92	22.98
GPRS (GMSK, 2 Tx slots) – CS1	28.83	28.97	29.03	22.83	22.97	23.03
EDGE (GMSK, 1 Tx slot) – MCS1	31.66	31.79	31.89	22.66	22.79	22.89
EDGE (GMSK, 2 Tx slots) – MCS1	28.74	28.87	28.95	22.74	22.87	22.95
EDGE (GMSK, 3 Tx slots) – MCS1	26.91	27.05	26.69	22.65	22.79	22.43
EDGE (GMSK, 4 Tx slots) – MCS1	25.73	25.87	25.95	22.73	22.87	22.95
EDGE (8PSK, 1 Tx slot) – MCS5	26.87	26.99	27.03	17.87	17.99	18.03
EDGE (8PSK, 2 Tx slots) – MCS5	24.36	24.48	24.52	18.36	18.48	18.52
EDGE (8PSK, 3 Tx slots) – MCS5	22.39	22.50	22.51	18.13	18.24	18.25
EDGE (8PSK, 4 Tx slots) – MCS5	21.23	21.34	21.35	18.23	18.34	18.35

Remark: The frame-averaged power is linearly scaled the maximum burst averaged power over 8 time slots.

The calculated method are shown as below:

Frame-averaged power = Maximum burst averaged power (1 Tx Slot) - 9 dB

Frame-averaged power = Maximum burst averaged power (2 Tx Slots) - 6 dB

Frame-averaged power = Maximum burst averaged power (3 Tx Slots) - 4.26 dB

Frame-averaged power = Maximum burst averaged power (4 Tx Slots) - 3 dB

Band GSM1900	Burst Average Power (dBm)			Frame-Average Power (dBm)		
TX Channel	512	661	810	512	661	810
Frequency (MHz)	1850.2	1880	1909.8	1850.2	1880	1909.8
GPRS (GMSK, 1 Tx slot) – CS1	28.18	28.08	28.00	19.18	19.08	19.00
GPRS (GMSK, 2 Tx slots) – CS1	26.17	26.11	26.03	20.17	20.11	20.03
EDGE (GMSK, 1 Tx slot) – MCS1	28.17	28.07	27.99	19.17	19.07	18.99
EDGE (GMSK, 2 Tx slots) – MCS1	26.16	26.10	26.02	20.16	20.10	20.02
EDGE (GMSK, 3 Tx slots) – MCS1	24.29	24.22	24.14	20.03	19.96	19.88
EDGE (GMSK, 4 Tx slots) – MCS1	23.14	23.08	23.01	20.14	20.08	20.01
EDGE (8PSK, 1 Tx slot) – MCS5	25.23	25.16	25.07	16.23	16.16	16.07
EDGE (8PSK, 2 Tx slots) – MCS5	22.72	22.66	22.58	16.72	16.66	16.58
EDGE (8PSK, 3 Tx slots) – MCS5	20.84	20.78	20.70	16.58	16.52	16.44
EDGE (8PSK, 4 Tx slots) – MCS5	19.67	19.55	19.53	16.67	16.55	16.53

Remark: The frame-averaged power is linearly scaled the maximum burst averaged power over 8 time slots.

The calculated method are shown as below:

Frame-averaged power = Maximum burst averaged power (1 Tx Slot) - 9 dB

Frame-averaged power = Maximum burst averaged power (2 Tx Slots) - 6 dB

Frame-averaged power = Maximum burst averaged power (3 Tx Slots) - 4.26 dB

Frame-averaged power = Maximum burst averaged power (4 Tx Slots) - 3 dB

**Note:**

- Per KDB 447498 D01v05, the maximum output power channel is used for SAR testing.
- For hotspot mode SAR testing, GPRS and EDGE should be evaluated, therefore the EUT was set in GPRS 2 Tx slots for GSM850 and GSM1900 due to its highest frame-average power.



**< WLAN 2.4GHz Conducted Power>**

Mode	Channel	Frequency (MHz)	Average power (dBm)			
			Data Rate			
			1Mbps	2Mbps	5.5Mbps	11Mbps
802.11b	CH 1	2412	11.33	11.31	10.26	9.78
	CH 6	2437	13.62	13.75	12.62	11.80
	CH 11	2462	14.38	14.32	12.79	12.07

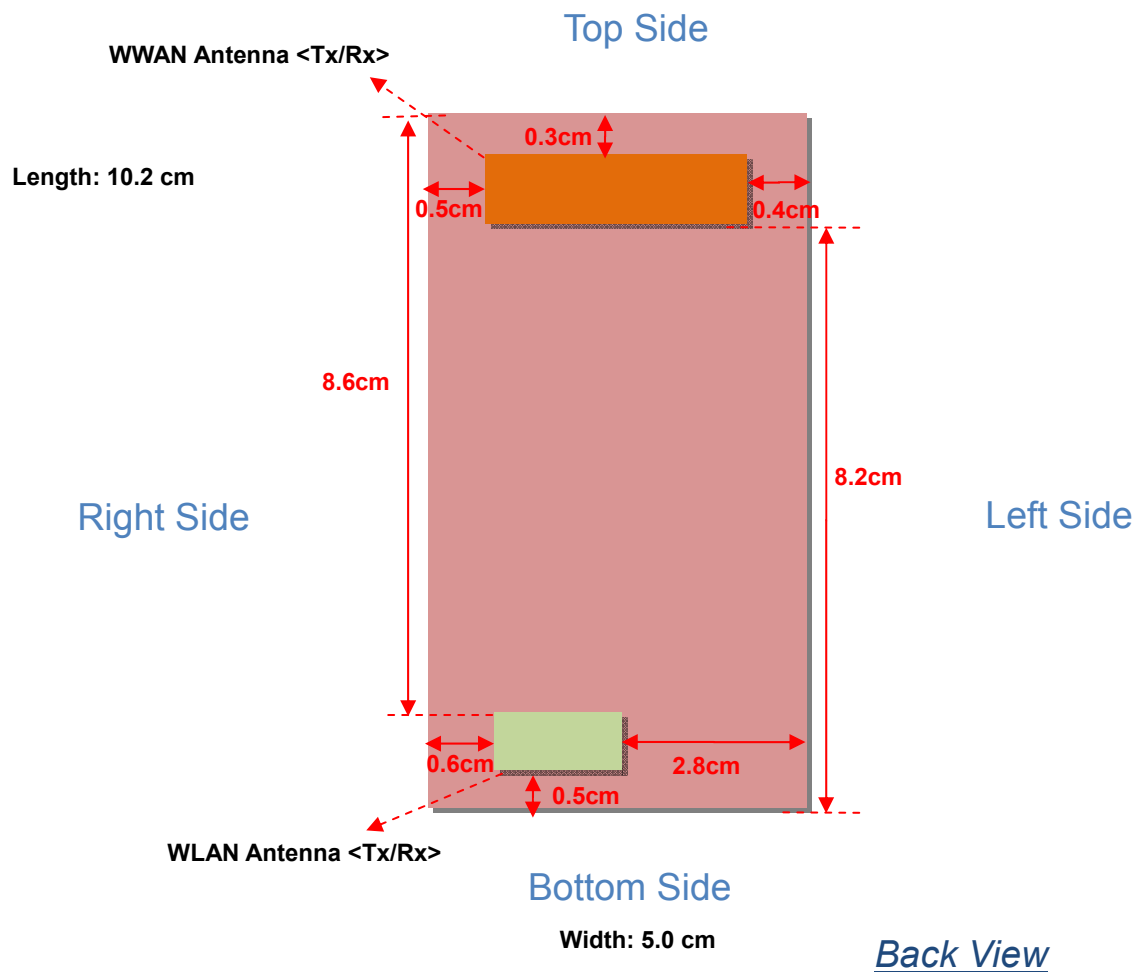
Mode	Channel	Frequency (MHz)	Average power (dBm)							
			Data Rate							
			6Mbps	9Mbps	12Mbps	18Mbps	24Mbps	36Mbps	48Mbps	54Mbps
802.11g	CH 1	2412	10.62	10.48	11.05	11.09	9.60	10.01	11.49	10.51
	CH 6	2437	12.36	12.33	12.32	12.34	11.75	11.40	12.25	11.64
	CH 11	2462	11.52	11.50	11.57	11.55	11.12	11.07	12.10	11.16

Mode	Channel	Frequency (MHz)	Average power (dBm)							
			MCS Index							
			MCS0	MCS1	MCS2	MCS3	MCS4	MCS5	MCS6	MCS7
802.11n-HT20	CH 1	2412	11.30	11.15	10.41	12.81	11.80	11.76	10.90	10.85
	CH 6	2437	13.00	12.93	12.17	13.31	11.66	10.68	10.73	10.59
	CH 11	2462	11.81	11.71	11.17	12.46	10.41	10.41	10.04	9.95

**Note:**

1. Per KDB 248227 D01 v01r02, choose the highest output power channel to test SAR and determine further SAR exclusion
2. For each frequency band, testing at higher data rates and higher order modulations is not required when the maximum average output power for each of these configurations is less than 1/4dB higher than those measured at the lowest data rate
3. Per KDB 248227 D01 v01r02, 11g and 11n-HT20 output power is less than 1/4dB higher than 11b mode, thus the SAR can be excluded.

## 11. DUT Antenna Location



Antennas	Wireless Interface
WWAN Antenna (Tx / Rx)	GSM850 GSM1900
WLAN Antenna (Tx / Rx)	WLAN 2.4GHz

Distance of the Antenna to the EUT surface/edge						
Antennas	Back	Front	Top Side	Bottom Side	Right Side	Left Side
<b>WWAN Antenna</b>	≤ 25mm	≤ 25mm	≤ 25mm	82mm	≤ 25mm	≤ 25mm
<b>WLAN Antenna</b>	≤ 25mm	≤ 25mm	86mm	≤ 25mm	≤ 25mm	28mm

Positions for SAR tests; Hotspot mode Test distance: 10 mm						
Antennas	Back	Front	Top Side	Bottom Side	Right Side	Left Side
<b>WWAN Antenna</b>	Yes	Yes	Yes	NO	Yes	Yes
<b>WLAN Antenna</b>	Yes	Yes	NO	Yes	Yes	NO

- Hotspot mode SAR assessment is required.
- Referring to KDB 941225 D06 v01, when the overall device length and width are ≥ 9cm\*5cm, the test distance is 10 mm. SAR must be measured for all sides and surfaces with a transmitting antenna located within 25mm from that surface or edge
- Per KDB 447498 D01v05, for handsets the *test separation distance* is determined by the smallest distance between the outer surface of the device and the user; which is 10mm for hotspot SAR.

## 12. SAR Test Results

### Note:

- Per KDB 447498 D01v05, the reported SAR is the measured SAR value adjusted for maximum tune-up tolerance.  
Scaling Factor = tune-up limit power (mW) / EUT RF power (mW), where tune-up limit is the maximum rated power among all production units.

$$\text{Reported SAR(W/kg)} = \text{Measured SAR(W/kg)} * \text{Scaling Factor}$$

- Per KDB 447498 D01v05, for each exposure position, if the highest output channel reported SAR  $\leq 0.8\text{W/kg}$ , other channels SAR testing is not necessary.
- For Hotspot SAR testing, per KDB 941225 D06, for EUT dimension  $\geq 9\text{cm} \times 5\text{cm}$ , the test distance is 1cm. SAR must be measured for all surfaces and sides with a transmitting antenna located within 2.5cm from that surface or edge.

### 12.1 Test Records for Hotspot SAR Test

#### <GSM SAR>

Plot No.	Band	Mode	Test Position	Gap (cm)	Ch.	Freq. (MHz)	Average Power (dBm)	Tune-Up Limit (dBm)	Scaling Factor	Power Drift (dB)	Measured SAR <sub>1g</sub> (W/kg)	Reported SAR <sub>1g</sub> (W/kg)
1	GSM850	GPRS (2 Tx slots)	Front	1	251	848.8	29.03	29.5	1.114	0.06	1.160	1.293
3	GSM850	GPRS (2 Tx slots)	Back	1	251	848.8	29.03	29.5	1.114	0.01	0.813	0.906
4	GSM850	GPRS (2 Tx slots)	Left Side	1	251	848.8	29.03	29.5	1.114	0.01	0.504	0.562
5	GSM850	GPRS (2 Tx slots)	Right Side	1	251	848.8	29.03	29.5	1.114	0.04	0.633	0.705
6	GSM850	GPRS (2 Tx slots)	Top Side	1	251	848.8	29.03	29.5	1.114	-0.01	0.067	0.075
7	GSM850	GPRS (2 Tx slots)	Front	1	128	824.2	28.83	29.5	1.167	0.06	0.955	1.114
8	GSM850	GPRS (2 Tx slots)	Front	1	189	836.4	28.97	29.5	1.130	0.06	1.030	1.164
9	GSM850	GPRS (2 Tx slots)	Back	1	128	824.2	28.83	29.5	1.167	-0.02	0.675	1.114
10	GSM850	GPRS (2 Tx slots)	Back	1	189	836.4	28.97	29.5	1.130	-0.00051	0.717	0.810
11	GSM1900	GPRS (2 Tx slots)	Front	1	512	1850.2	26.17	26.5	1.079	-0.03	0.579	0.625
12	GSM1900	GPRS (2 Tx slots)	Back	1	512	1850.2	26.17	26.5	1.079	-0.06	0.342	0.369
13	GSM1900	GPRS (2 Tx slots)	Left Side	1	512	1850.2	26.17	26.5	1.079	0.11	0.199	0.215
14	GSM1900	GPRS (2 Tx slots)	Right Side	1	512	1850.2	26.17	26.5	1.079	0.09	0.193	0.208
15	GSM1900	GPRS (2 Tx slots)	Top Side	1	512	1850.2	26.17	26.5	1.079	0.02	0.265	0.286

#### <WLAN2.4GHz SAR>

Plot No.	Band	Mode	Test Position	Gap (cm)	Ch.	Freq. (MHz)	Data Rate (bps)	Average Power (dBm)	Tune-Up Limit (dBm)	Tune-up Scaling Factor	Power Drift (dB)	Measured SAR <sub>1g</sub> (W/kg)	Reported SAR <sub>1g</sub> (W/kg)
16	WLAN 2.4GHz	802.11b	Front	1	11	2462	1M	14.38	15	1.153	-0.03	0.190	0.219
17	WLAN 2.4GHz	802.11b	Back	1	11	2462	1M	14.38	15	1.153	0.1	0.130	0.150
18	WLAN 2.4GHz	802.11b	Right Side	1	11	2462	1M	14.38	15	1.153	0.0053	0.094	0.108
19	WLAN 2.4GHz	802.11b	Bottom Side	1	11	2462	1M	14.38	15	1.153	-0.03	0.043	0.050

## 12.2 Repeated SAR Measurement

Plot No.	Band	Mode	Test Position	Gap (cm)	Ch.	Freq. (MHz)	Average Power (dBm)	Tune-Up Limit (dBm)	Tune-up Scaling Factor	Power Drift (dB)	Measured SAR <sub>1g</sub> (W/kg)	Ratio	Reported SAR <sub>1g</sub> (W/kg)
1	GSM850	GPRS (2 Tx slots)	Front	1	251	848.8	29.03	29.5	1.114	0.06	1.160	1	1.293
2	GSM850	GPRS (2 Tx slots)	Front	1	251	848.8	29.03	29.5	1.114	0.01	1.160	1	1.293

**Note:**

1. Per KDB 865664 D01v01, for each frequency band, repeated SAR measurement is required only when the measured SAR is  $\geq 0.8$ W/kg
2. Per KDB 865664 D01v01, if the ratio among the repeated measurement is  $\leq 1.2$  and the measured SAR  $< 1.45$ W/kg, only one repeated measurement is required.
3. The ratio is the difference in percentage between original and repeated *measured SAR*.
4. All measurement SAR result is scaled-up to account for tune-up tolerance and is compliant.

### 12.3 Highest SAR Plot

Test Laboratory: Sporton International Inc. SAR/HAC Testing Lab

Date: 2013-6-22

#01\_GSM850\_GPRS (2 Tx slots)\_Front 1cm\_Ch251

**DUT: 361407**

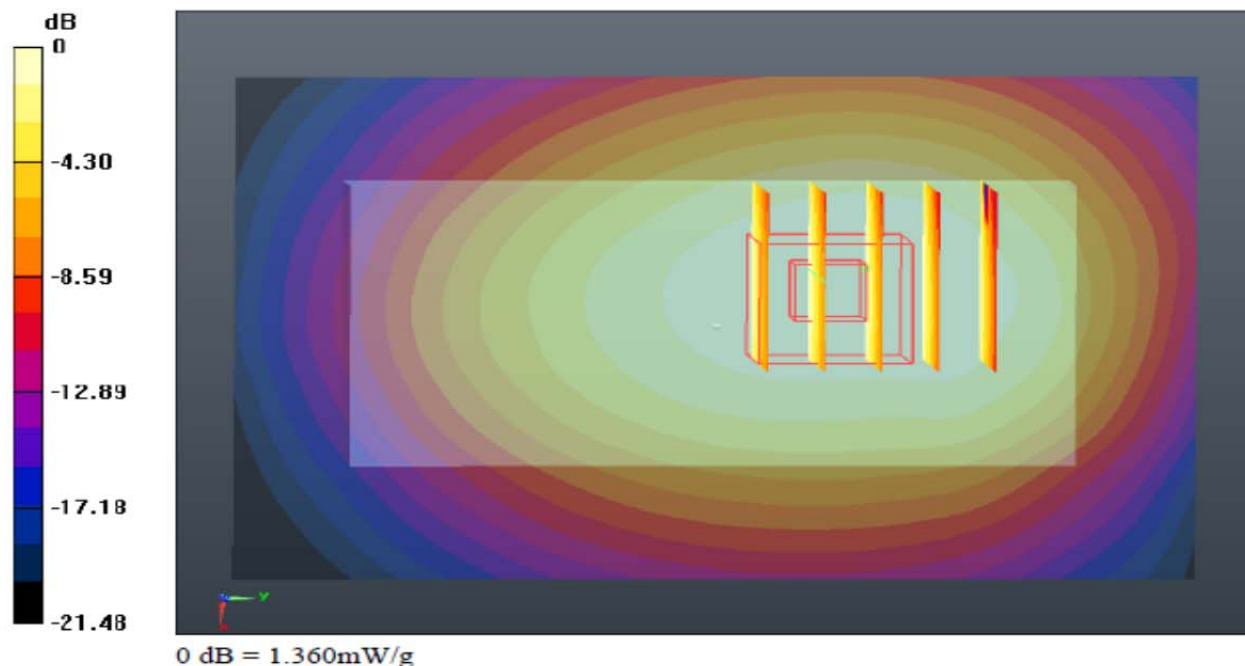
Communication System: GPRS/EDGE (2 Tx slots); Frequency: 848.8 MHz; Duty Cycle: 1:4  
 Medium: MSL\_835\_130622 Medium parameters used:  $f = 849 \text{ MHz}$ ;  $\sigma = 0.997 \text{ mho/m}$ ;  $\epsilon_r = 54.707$ ;  
 $\rho = 1000 \text{ kg/m}^3$   
 Ambient Temperature : 23.1 °C; Liquid Temperature : 21.1 °C

DASY5 Configuration:

- Probe: EX3DV4 - SN3820; ConvF(9.07, 9.07, 9.07); Calibrated: 2012-12-10
- Sensor-Surface: 2mm (Mechanical Surface Detection)
- Electronics: DAE4 Sn679; Calibrated: 2013-1-16
- Phantom: SAM1; Type: SAM; Serial: TP-1479
- Measurement SW: DASY52, Version 52.8 (4); SEMCAD X Version 14.4.5 (3634)

**Ch251/Area Scan (61x91x1):** Measurement grid:  $dx=15\text{mm}$ ,  $dy=15\text{mm}$   
 Maximum value of SAR (interpolated) = 1.390 mW/g

**Ch251/Zoom Scan (5x5x7)/Cube 0:** Measurement grid:  $dx=8\text{mm}$ ,  $dy=8\text{mm}$ ,  $dz=5\text{mm}$   
 Reference Value = 31.630 V/m; Power Drift = 0.06 dB  
 Peak SAR (extrapolated) = 1.542 W/kg  
 $\text{SAR}(1 \text{ g}) = 1.160 \text{ mW/g}$ ;  $\text{SAR}(10 \text{ g}) = 0.833 \text{ mW/g}$   
 Maximum value of SAR (measured) = 1.359 mW/g





Test Laboratory: Sporton International Inc. SAR/HAC Testing Lab

Date: 2013-6-22

#11\_GSM1900\_GPRS (2 Tx slots)\_Front 1cm\_Ch512

**DUT: 361407**

Communication System: GPRS/EDGE (2 Tx slots); Frequency: 1850.2 MHz; Duty Cycle: 1:4  
Medium: MSL\_1900\_130622 Medium parameters used:  $f = 1850.2 \text{ MHz}$ ;  $\sigma = 1.491 \text{ mho/m}$ ;  $\epsilon_r =$

53.394;  $\rho = 1000 \text{ kg/m}^3$

Ambient Temperature : 23.3 °C; Liquid Temperature : 21.3 °C

**DASY5 Configuration:**

- Probe: EX3DV4 - SN3820; ConvF(7.3, 7.3, 7.3); Calibrated: 2012-12-10
- Sensor-Surface: 2mm (Mechanical Surface Detection)
- Electronics: DAE4 Sn679; Calibrated: 2013-1-16
- Phantom: SAM2; Type: SAM; Serial: TP-1477
- Measurement SW: DASY52, Version 52.8 (4); SEMCAD X Version 14.4.5 (3634)

**Ch512/Area Scan (61x91x1):** Measurement grid:  $dx=15\text{mm}$ ,  $dy=15\text{mm}$

Maximum value of SAR (interpolated) = 0.827 mW/g

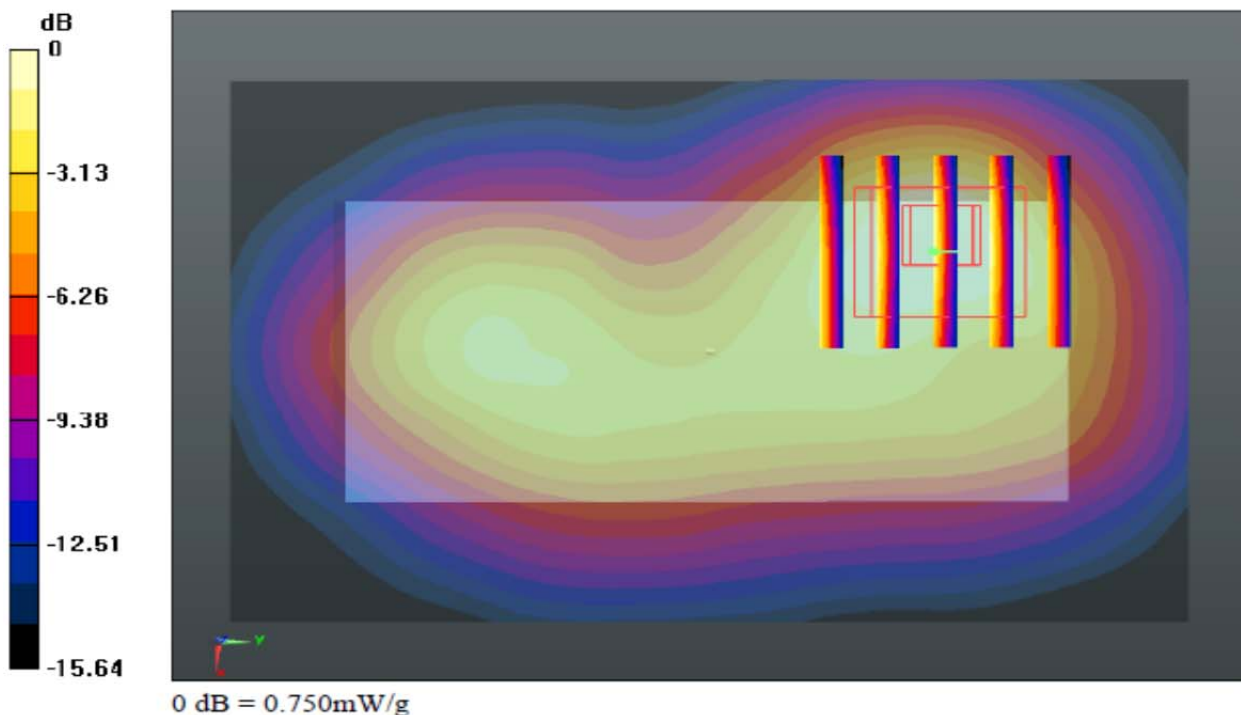
**Ch512/Zoom Scan (5x5x7)/Cube 0:** Measurement grid:  $dx=8\text{mm}$ ,  $dy=8\text{mm}$ ,  $dz=5\text{mm}$

Reference Value = 13.860 V/m; Power Drift = -0.03 dB

Peak SAR (extrapolated) = 0.954 W/kg

SAR(1 g) = 0.579 mW/g; SAR(10 g) = 0.331 mW/g

Maximum value of SAR (measured) = 0.754 mW/g



Test Laboratory: Sporton International Inc. SAR/HAC Testing Lab

Date: 2013-6-22

#16\_WLAN 2.4GHz\_802.11b\_1M\_Front 1cm\_Ch11

**DUT: 361407**

Communication System: WIFI; Frequency: 2462 MHz; Duty Cycle: 1:1

Medium: MSL\_2450\_130622 Medium parameters used:  $f = 2462 \text{ MHz}$ ;  $\sigma = 1.958 \text{ mho/m}$ ;  $\epsilon_r =$

$50.903$ ;  $\rho = 1000 \text{ kg/m}^3$

Ambient Temperature :  $23.5 \text{ }^{\circ}\text{C}$ ; Liquid Temperature :  $21.6 \text{ }^{\circ}\text{C}$

**DASY5 Configuration:**

- Probe: EX3DV4 - SN3820; ConvF(6.84, 6.84, 6.84); Calibrated: 2012-12-10

- Sensor-Surface: 2mm (Mechanical Surface Detection)

- Electronics: DAE4 Sn679; Calibrated: 2013-1-16

- Phantom: SAM1; Type: SAM; Serial: TP-1479

- Measurement SW: DASY52, Version 52.8 (4); SEMCAD X Version 14.4.5 (3634)

**Ch11/Area Scan (71x111x1):** Measurement grid:  $dx=12\text{mm}$ ,  $dy=12\text{mm}$

Maximum value of SAR (interpolated) =  $0.320 \text{ mW/g}$

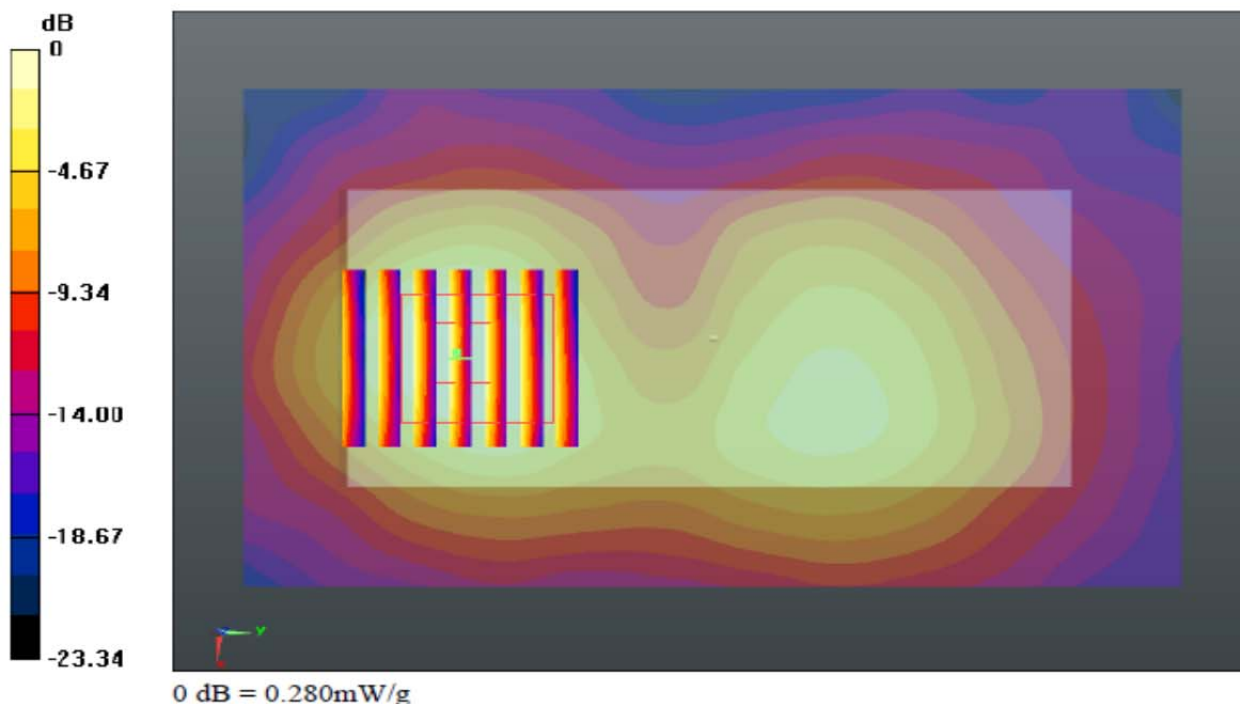
**Ch11/Zoom Scan (7x7x7)/Cube 0:** Measurement grid:  $dx=5\text{mm}$ ,  $dy=5\text{mm}$ ,  $dz=5\text{mm}$

Reference Value =  $4.798 \text{ V/m}$ ; Power Drift =  $-0.03 \text{ dB}$

Peak SAR (extrapolated) =  $0.376 \text{ W/kg}$

SAR(1 g) =  $0.190 \text{ mW/g}$ ; SAR(10 g) =  $0.096 \text{ mW/g}$

Maximum value of SAR (measured) =  $0.278 \text{ mW/g}$





### 13. Simultaneous Transmission Analysis

NO.	Simultaneous Transmission Configurations	EUT			Note
		Head	Body-worn	Hotspot	
1.	GPRS/EDGE(Data) + WLAN2.4GHz(data)	-	-	Yes	2.4GHz Hotspot

**Note:**

- The reported SAR summation is calculated based on the same configuration and test position.
- Per KDB 447498 D01v05, simultaneous transmission SAR is compliant if,
  - Scalar SAR summation  $< 1.6\text{W/kg}$ .
  - $\text{SPLSR} = (\text{SAR}_1 + \text{SAR}_2)^{1.5} / (\text{min. separation distance, mm})$ , and the peak separation distance is determined from the square root of  $[(x_1-x_2)^2 + (y_1-y_2)^2 + (z_1-z_2)^2]$ , where  $(x_1, y_1, z_1)$  and  $(x_2, y_2, z_2)$  are the coordinates of the extrapolated peak SAR locations in the zoom scan  
If  $\text{SPLSR} \leq 0.04$ , simultaneously transmission SAR measurement is not necessary
  - Simultaneously transmission SAR measurement, and the reported multi-band SAR  $< 1.6\text{W/kg}$

#### 13.1 Hotspot Exposure Conditions

Position	WWAN (PCB)			WLAN 2.4GHz (DTS)		WWAN + WLAN SAR (W/kg)	SPLSR	Case No
	WWAN Band	Plot No	Max. WWAN SAR (W/kg)	Plot No	Max. WLAN SAR (W/kg)			
Front	GSM850	#01	1.293	#16	0.219	<b>1.51</b>	-	-
	GSM1900	#11	0.625	#16	0.219	<b>0.84</b>	-	-
Back	GSM850	#09	1.114	#17	0.150	<b>1.26</b>	-	-
	GSM1900	#12	0.369	#17	0.150	<b>0.52</b>	-	-
Left Side	GSM850	#04	0.562	-	-	<b>0.56</b>	-	-
	GSM1900	#13	0.215	-	-	<b>0.22</b>	-	-
Right Side	GSM850	#05	0.705	#18	0.108	<b>0.81</b>	-	-
	GSM1900	#14	0.208	#18	0.108	<b>0.32</b>	-	-
Top Side	GSM850	#06	0.075	-	-	<b>0.08</b>	-	-
	GSM1900	#15	0.286	-	-	<b>0.29</b>	-	-
Bottom Side	GSM850	-	-	#19	0.050	<b>0.05</b>	-	-
	GSM1900	-	-	#19	0.050	<b>0.05</b>	-	-

Test Engineer : Jimmy Cheng

## 14. Uncertainty Assessment

The component of uncertainty may generally be categorized according to the methods used to evaluate them. The evaluation of uncertainty by the statistical analysis of a series of observations is termed a Type A evaluation of uncertainty. The evaluation of uncertainty by means other than the statistical analysis of a series of observation is termed a Type B evaluation of uncertainty. Each component of uncertainty, however evaluated, is represented by an estimated standard deviation, termed standard uncertainty, which is determined by the positive square root of the estimated variance.

A Type A evaluation of standard uncertainty may be based on any valid statistical method for treating data. This includes calculating the standard deviation of the mean of a series of independent observations; using the method of least squares to fit a curve to the data in order to estimate the parameter of the curve and their standard deviations; or carrying out an analysis of variance in order to identify and quantify random effects in certain kinds of measurement.

A type B evaluation of standard uncertainty is typically based on scientific judgment using all of the relevant information available. These may include previous measurement data, experience, and knowledge of the behavior and properties of relevant materials and instruments, manufacture's specification, data provided in calibration reports and uncertainties assigned to reference data taken from handbooks. Broadly speaking, the uncertainty is either obtained from an outdoor source or obtained from an assumed distribution, such as the normal distribution, rectangular or triangular distributions indicated in Table 12.1

Uncertainty Distributions	Normal	Rectangular	Triangular	U-Shape
Multi-plying Factor <sup>(a)</sup>	1/ $\kappa$ <sup>(b)</sup>	1/ $\sqrt{3}$	1/ $\sqrt{6}$	1/ $\sqrt{2}$

(a) standard uncertainty is determined as the product of the multiplying factor and the estimated range of variations in the measured quantity

(b)  $\kappa$  is the coverage factor

**Table 14.1 Standard Uncertainty for Assumed Distribution**

The combined standard uncertainty of the measurement result represents the estimated standard deviation of the result. It is obtained by combining the individual standard uncertainties of both Type A and Type B evaluation using the usual "root-sum-squares" (RSS) methods of combining standard deviations by taking the positive square root of the estimated variances.

Expanded uncertainty is a measure of uncertainty that defines an interval about the measurement result within which the measured value is confidently believed to lie. It is obtained by multiplying the combined standard uncertainty by a coverage factor. Typically, the coverage factor ranges from 2 to 3. Using a coverage factor allows the true value of a measured quantity to be specified with a defined probability within the specified uncertainty range. For purpose of this document, a coverage factor two is used, which corresponds to confidence interval of about 95 %. The DASY uncertainty Budget is shown in the following tables.

Error Description	Uncertainty	Probability	Divisor	Ci	Ci	Standard	Standard
	Value	Distribution		(1g)	(10g)	Uncertainty	Uncertainty
	(±%)					(1g)	(10g)
Measurement System							
Probe Calibration	6.0	Normal	1	1	1	± 6.0 %	± 6.0 %
Axial Isotropy	4.7	Rectangular	√3	0.7	0.7	± 1.9 %	± 1.9 %
Hemispherical Isotropy	9.6	Rectangular	√3	0.7	0.7	± 3.9 %	± 3.9 %
Boundary Effects	1.0	Rectangular	√3	1	1	± 0.6 %	± 0.6 %
Linearity	4.7	Rectangular	√3	1	1	± 2.7 %	± 2.7 %
System Detection Limits	1.0	Rectangular	√3	1	1	± 0.6 %	± 0.6 %
Readout Electronics	0.3	Normal	1	1	1	± 0.3 %	± 0.3 %
Response Time	0.8	Rectangular	√3	1	1	± 0.5 %	± 0.5 %
Integration Time	2.6	Rectangular	√3	1	1	± 1.5 %	± 1.5 %
RF Ambient Noise	3.0	Rectangular	√3	1	1	± 1.7 %	± 1.7 %
RF Ambient Reflections	3.0	Rectangular	√3	1	1	± 1.7 %	± 1.7 %
Probe Positioner	0.4	Rectangular	√3	1	1	± 0.2 %	± 0.2 %
Probe Positioning	2.9	Rectangular	√3	1	1	± 1.7 %	± 1.7 %
Max. SAR Eval.	1.0	Rectangular	√3	1	1	± 0.6 %	± 0.6 %
Test Sample Related							
Device Positioning	2.9	Normal	1	1	1	± 2.9 %	± 2.9 %
Device Holder	3.6	Normal	1	1	1	± 3.6 %	± 3.6 %
Power Drift	5.0	Rectangular	√3	1	1	± 2.9 %	± 2.9 %
Phantom and Setup							
Phantom Uncertainty	4.0	Rectangular	√3	1	1	± 2.3 %	± 2.3 %
Liquid Conductivity (Target)	5.0	Rectangular	√3	0.64	0.43	± 1.8 %	± 1.2 %
Liquid Conductivity (Meas.)	2.5	Normal	1	0.64	0.43	± 1.6 %	± 1.1 %
Liquid Permittivity (Target)	5.0	Rectangular	√3	0.6	0.49	± 1.7 %	± 1.4 %
Liquid Permittivity (Meas.)	2.5	Normal	1	0.6	0.49	± 1.5 %	± 1.2 %
Combined Standard Uncertainty						± 11.0 %	± 10.8 %
Coverage Factor for 95 %						K=2	
Expanded Uncertainty						± 22.0 %	± 21.5 %

**Table 14.2 Uncertainty Budget for frequency range 300 MHz to 3 GHz**

## **15. References**

- [1] FCC 47 CFR Part 2 "Frequency Allocations and Radio Treaty Matters; General Rules and Regulations"
- [2] ANSI/IEEE Std. C95.1-1992, "IEEE Standard for Safety Levels with Respect to Human Exposure to Radio Frequency Electromagnetic Fields, 3 kHz to 300 GHz", September 1992
- [3] IEEE Std. 1528-2003, "Recommended Practice for Determining the Peak Spatial-Average Specific Absorption Rate (SAR) in the Human Head from Wireless Communications Devices: Measurement Techniques", December 2003
- [4] FCC OET Bulletin 65 (Edition 97-01) Supplement C (Edition 01-01), "Evaluating Compliance with FCC Guidelines for Human Exposure to Radiofrequency Electromagnetic Fields", June 2001
- [5] SPEAG DASY System Handbook
- [6] FCC KDB 248227 D01 v01r02, "SAR Measurement Procedures for 802.11 a/b/g Transmitters", May 2007
- [7] FCC KDB 447498 D01 v05r01, "Mobile and Portable Device RF Exposure Procedures and Equipment Authorization Policies", May 2013
- [8] FCC KDB 941225 D03 v01, "Recommended SAR Test Reduction Procedures for GSM / GPRS / EDGE", December 2008
- [9] FCC KDB 941225 D06 v01r01, "SAR Evaluation Procedures for Portable Devices with Wireless Router Capabilities", May 2013



## ***Appendix A. Plots of System Performance Check***

The plots are shown as follows.

**System Check\_Body\_835MHz\_130622**

**DUT: D835V2 - SN:4d091**

Communication System: CW; Frequency: 835 MHz; Duty Cycle: 1:1

Medium: MSL\_835\_130622 Medium parameters used:  $f = 835 \text{ MHz}$ ;  $\sigma = 0.983 \text{ mho/m}$ ;  $\epsilon_r = 54.851$ ;

$\rho = 1000 \text{ kg/m}^3$

Ambient Temperature :  $23.1^\circ\text{C}$ ; Liquid Temperature :  $21.1^\circ\text{C}$

**DASY5 Configuration:**

- Probe: EX3DV4 - SN3820; ConvF(9.07, 9.07, 9.07); Calibrated: 2012-12-10
- Sensor-Surface: 2mm (Mechanical Surface Detection)
- Electronics: DAE4 Sn679; Calibrated: 2013-1-16
- Phantom: SAM1; Type: SAM; Serial: TP-1479
- Measurement SW: DASY52, Version 52.8 (4); SEMCAD X Version 14.4.5 (3634)

**Pin=250mW/Area Scan (61x61x1):** Measurement grid:  $dx=15\text{mm}$ ,  $dy=15\text{mm}$

Maximum value of SAR (interpolated) =  $2.967 \text{ mW/g}$

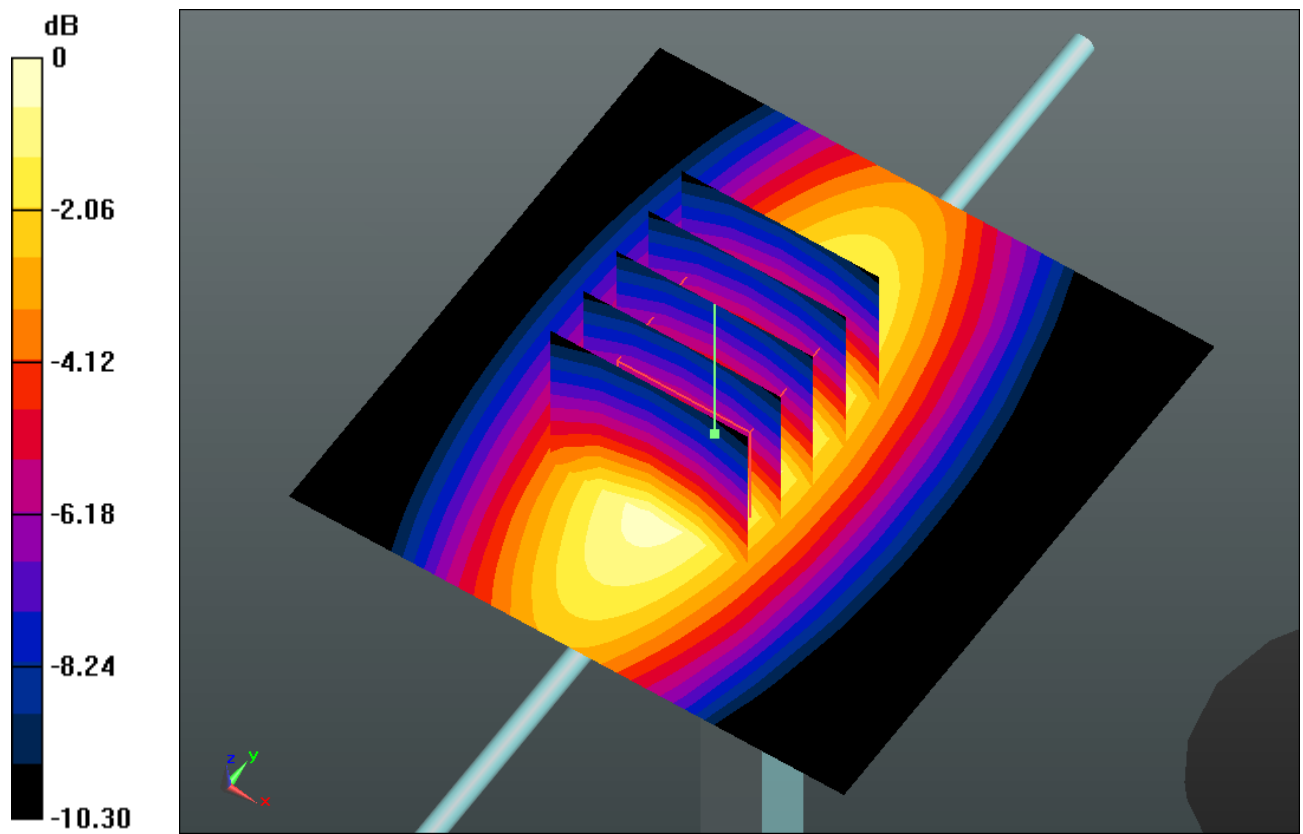
**Pin=250mW/Zoom Scan (5x5x7)/Cube 0:** Measurement grid:  $dx=8\text{mm}$ ,  $dy=8\text{mm}$ ,  $dz=5\text{mm}$

Reference Value =  $50.753 \text{ V/m}$ ; Power Drift =  $-0.04 \text{ dB}$

Peak SAR (extrapolated) =  $3.415 \text{ W/kg}$

**SAR(1 g) =  $2.35 \text{ mW/g}$ ; SAR(10 g) =  $1.56 \text{ mW/g}$**

Maximum value of SAR (measured) =  $2.943 \text{ mW/g}$



0 dB = 2.940mW/g



**System Check\_Body\_1900MHz\_130622**

**DUT: D1900V2 - SN:5d118**

Communication System: CW; Frequency: 1900 MHz; Duty Cycle: 1:1

Medium: MSL\_1900\_130622 Medium parameters used:  $f = 1900$  MHz;  $\sigma = 1.551$  mho/m;  $\epsilon_r =$

53.275;  $\rho = 1000$  kg/m<sup>3</sup>

Ambient Temperature : 23.3 °C ; Liquid Temperature : 21.3 °C

**DASY5 Configuration:**

- Probe: EX3DV4 - SN3820; ConvF(7.3, 7.3, 7.3); Calibrated: 2012-12-10
- Sensor-Surface: 2mm (Mechanical Surface Detection)
- Electronics: DAE4 Sn679; Calibrated: 2013-1-16
- Phantom: SAM2; Type: SAM; Serial: TP-1477
- Measurement SW: DASY52, Version 52.8 (4); SEMCAD X Version 14.4.5 (3634)

**Pin=250mW/Area Scan (61x61x1):** Measurement grid: dx=15mm, dy=15mm

Maximum value of SAR (interpolated) = 15.463 mW/g

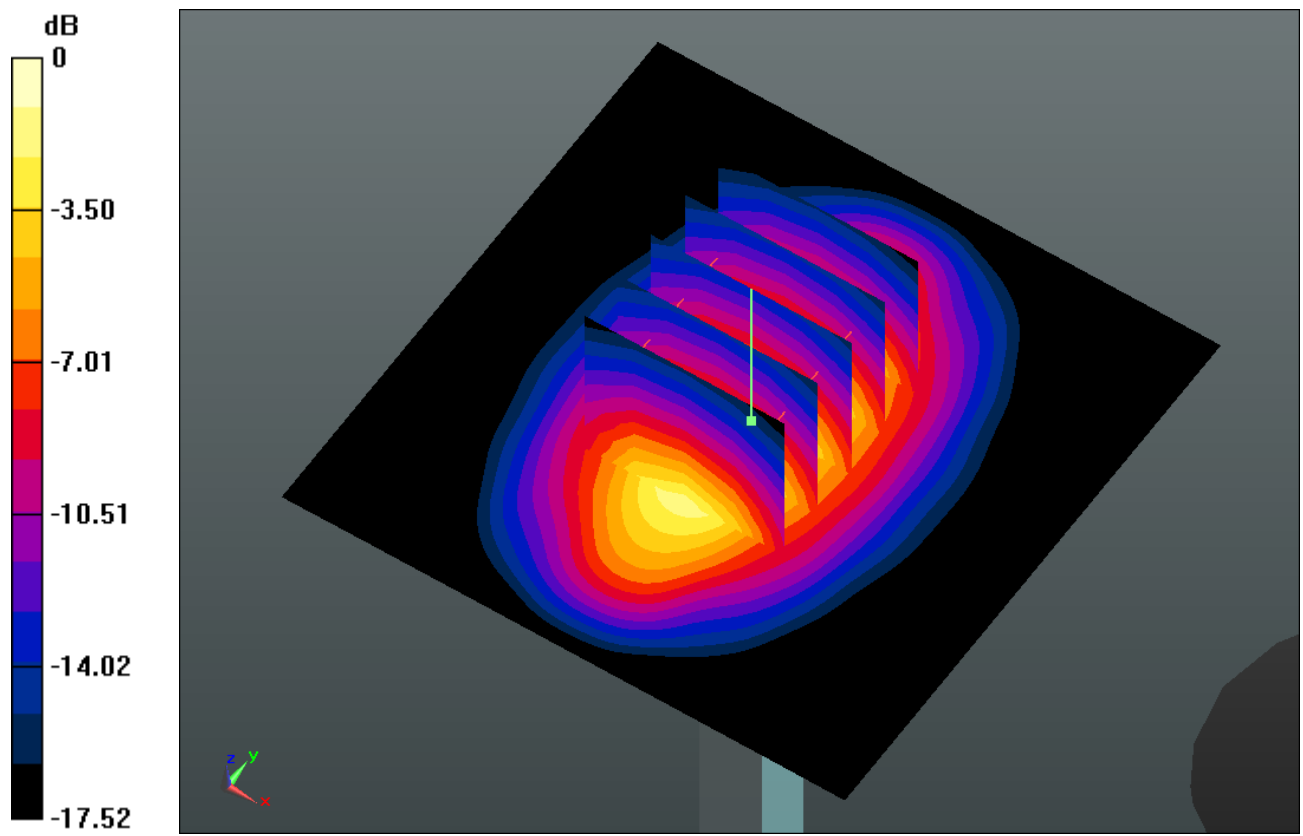
**Pin=250mW/Zoom Scan (5x5x7)/Cube 0:** Measurement grid: dx=8mm, dy=8mm, dz=5mm

Reference Value = 89.785 V/m; Power Drift = -0.02 dB

Peak SAR (extrapolated) = 19.143 W/kg

**SAR(1 g) = 10.9 mW/g; SAR(10 g) = 5.7 mW/g**

Maximum value of SAR (measured) = 15.466 mW/g



0 dB = 15.470mW/g

**System Check\_Body\_2450MHz\_130622**

**DUT: D2450V2 - SN:736**

Communication System: CW; Frequency: 2450 MHz; Duty Cycle: 1:1

Medium: MSL\_2450\_130622 Medium parameters used:  $f = 2450 \text{ MHz}$ ;  $\sigma = 1.942 \text{ mho/m}$ ;  $\epsilon_r =$

$50.952$ ;  $\rho = 1000 \text{ kg/m}^3$

Ambient Temperature :  $23.5 \text{ }^\circ\text{C}$ ; Liquid Temperature :  $21.6 \text{ }^\circ\text{C}$

**DASY5 Configuration:**

- Probe: EX3DV4 - SN3820; ConvF(6.84, 6.84, 6.84); Calibrated: 2012-12-10
- Sensor-Surface: 2mm (Mechanical Surface Detection)
- Electronics: DAE4 Sn679; Calibrated: 2013-1-16
- Phantom: SAM1; Type: SAM; Serial: TP-1479
- Measurement SW: DASY52, Version 52.8 (4); SEMCAD X Version 14.4.5 (3634)

**Pin=250mW/Area Scan (71x71x1):** Measurement grid:  $dx=12\text{mm}$ ,  $dy=12\text{mm}$

Maximum value of SAR (interpolated) =  $20.116 \text{ mW/g}$

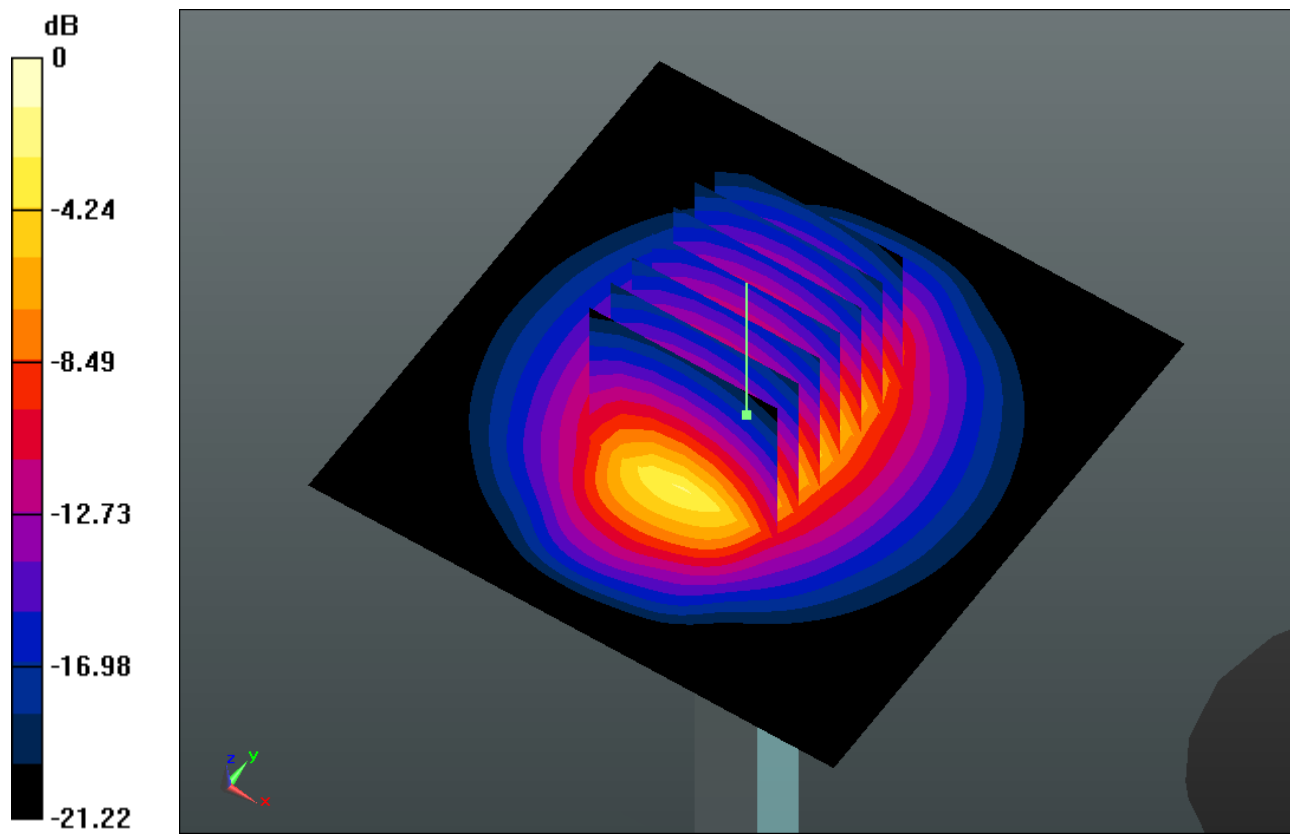
**Pin=250mW/Zoom Scan (7x7x7)/Cube 0:** Measurement grid:  $dx=5\text{mm}$ ,  $dy=5\text{mm}$ ,  $dz=5\text{mm}$

Reference Value =  $88.201 \text{ V/m}$ ; Power Drift =  $-0.08 \text{ dB}$

Peak SAR (extrapolated) =  $25.848 \text{ W/kg}$

**SAR(1 g) =  $12.9 \text{ mW/g}$ ; SAR(10 g) =  $6.02 \text{ mW/g}$**

Maximum value of SAR (measured) =  $19.602 \text{ mW/g}$



0 dB = 19.600mW/g



## ***Appendix B. Plots of SAR Measurement***

The plots are shown as follows.

**#01\_GSM850\_GPRS (2 Tx slots)\_Front 1cm\_Ch251**

**DUT: 361407**

Communication System: GPRS/EDGE (2 Tx slots); Frequency: 848.8 MHz; Duty Cycle: 1:4  
Medium: MSL\_835\_130622 Medium parameters used:  $f = 849$  MHz;  $\sigma = 0.997$  mho/m;  $\epsilon_r = 54.707$ ;  
 $\rho = 1000$  kg/m<sup>3</sup>  
Ambient Temperature : 23.1 °C; Liquid Temperature : 21.1 °C

DASY5 Configuration:

- Probe: EX3DV4 - SN3820; ConvF(9.07, 9.07, 9.07); Calibrated: 2012-12-10
- Sensor-Surface: 2mm (Mechanical Surface Detection)
- Electronics: DAE4 Sn679; Calibrated: 2013-1-16
- Phantom: SAM1; Type: SAM; Serial: TP-1479
- Measurement SW: DASY52, Version 52.8 (4); SEMCAD X Version 14.4.5 (3634)

**Ch251/Area Scan (61x91x1):** Measurement grid: dx=15mm, dy=15mm

Maximum value of SAR (interpolated) = 1.390 mW/g

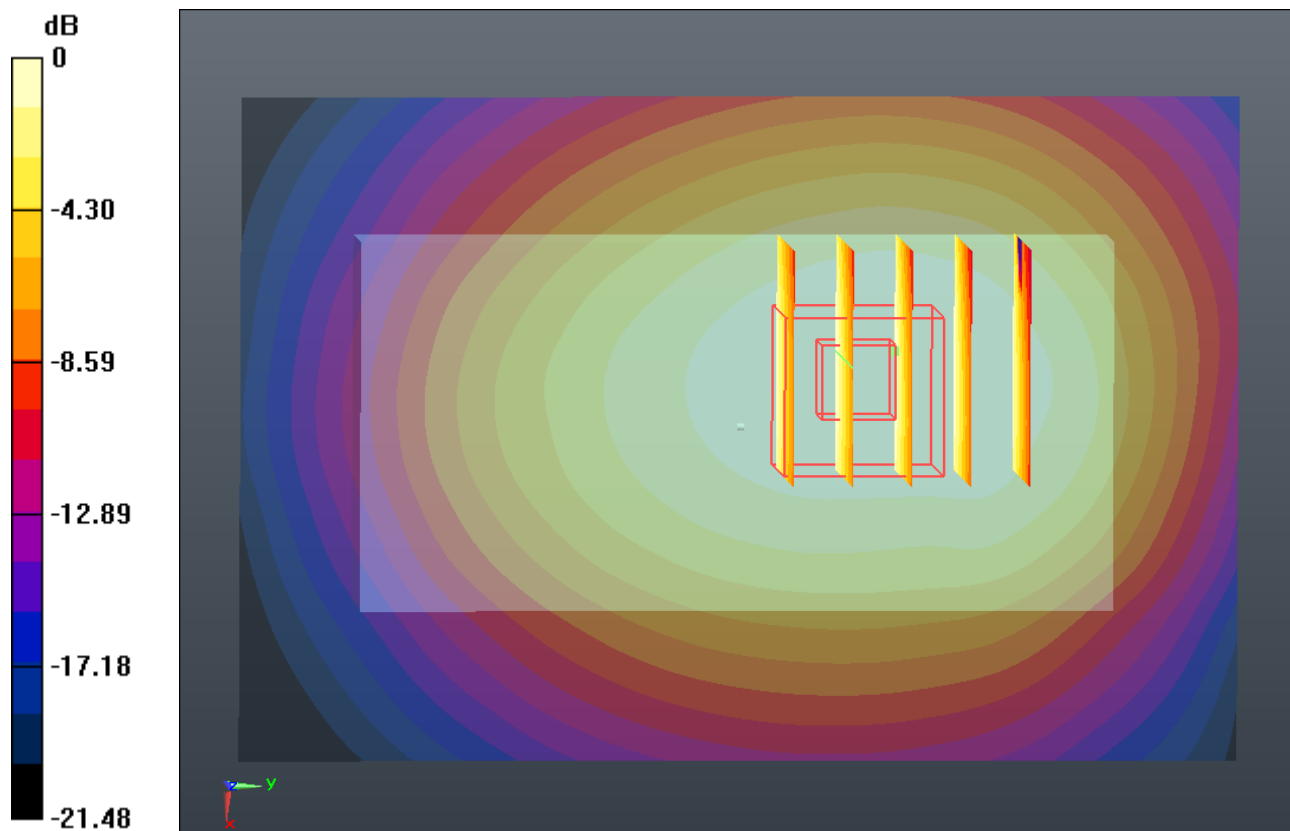
**Ch251/Zoom Scan (5x5x7)/Cube 0:** Measurement grid: dx=8mm, dy=8mm, dz=5mm

Reference Value = 31.630 V/m; Power Drift = 0.06 dB

Peak SAR (extrapolated) = 1.542 W/kg

**SAR(1 g) = 1.160 mW/g; SAR(10 g) = 0.833 mW/g**

Maximum value of SAR (measured) = 1.359 mW/g





**#02\_GSM850\_GPRS (2 Tx slots)\_Front 1cm\_Ch251\_Repeat SAR**

**DUT: 361407**

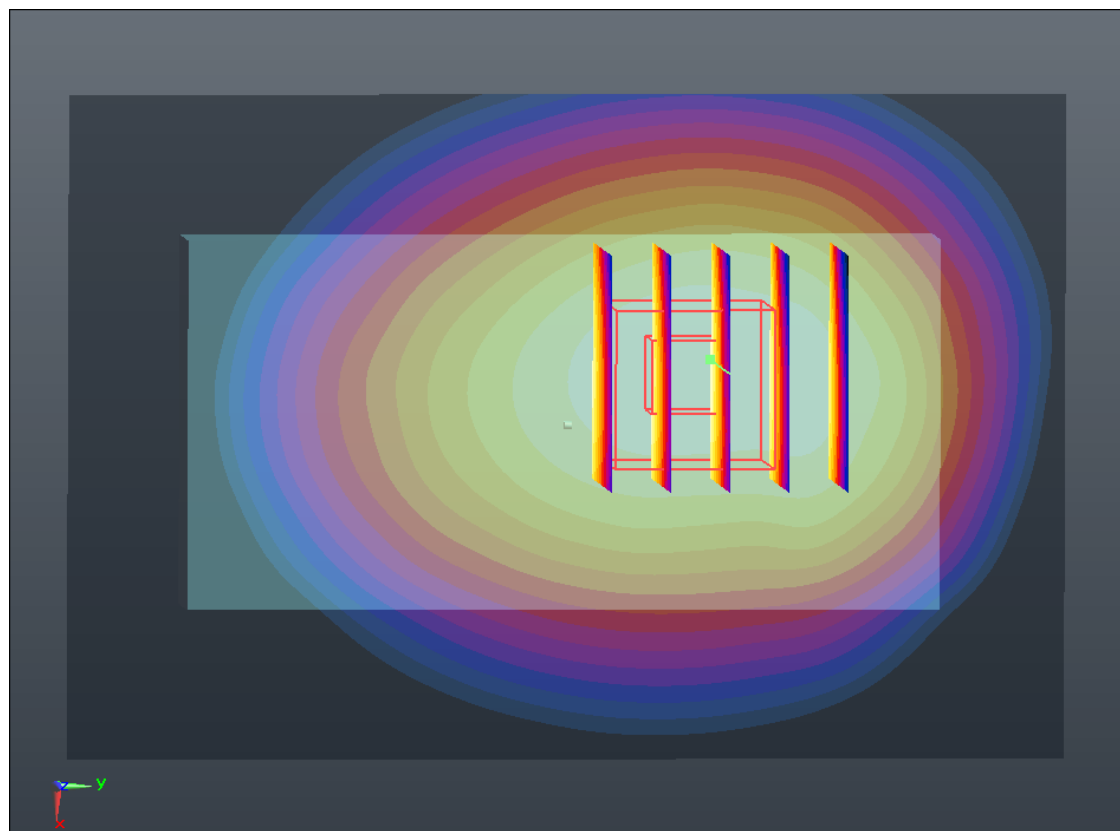
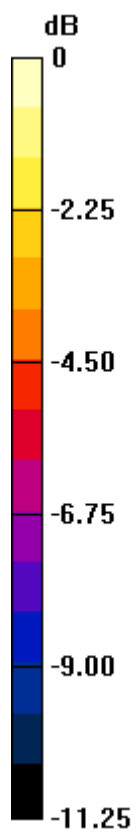
Communication System: GPRS/EDGE (2 Tx slots); Frequency: 848.8 MHz; Duty Cycle: 1:4  
Medium: MSL\_835\_130622 Medium parameters used:  $f = 849$  MHz;  $\sigma = 0.997$  mho/m;  $\epsilon_r = 54.707$ ;  
 $\rho = 1000$  kg/m<sup>3</sup>  
Ambient Temperature : 23.1 °C; Liquid Temperature : 21.1 °C

DASY5 Configuration:

- Probe: EX3DV4 - SN3820; ConvF(9.07, 9.07, 9.07); Calibrated: 2012-12-10
- Sensor-Surface: 2mm (Mechanical Surface Detection)
- Electronics: DAE4 Sn679; Calibrated: 2013-1-16
- Phantom: SAM1; Type: SAM; Serial: TP-1479
- Measurement SW: DASY52, Version 52.8 (4); SEMCAD X Version 14.4.5 (3634)

**Ch251/Area Scan (61x91x1):** Measurement grid: dx=15mm, dy=15mm  
Maximum value of SAR (interpolated) = 1.375 mW/g

**Ch251/Zoom Scan (5x5x7)/Cube 0:** Measurement grid: dx=8mm, dy=8mm, dz=5mm  
Reference Value = 31.687 V/m; Power Drift = 0.01 dB  
Peak SAR (extrapolated) = 1.536 W/kg  
**SAR(1 g) = 1.160 mW/g; SAR(10 g) = 0.828 mW/g**  
Maximum value of SAR (measured) = 1.368 mW/g



0 dB = 1.370mW/g

**#03\_GSM850\_GPRS (2 Tx slots)\_Back 1cm\_Ch251**

**DUT: 361407**

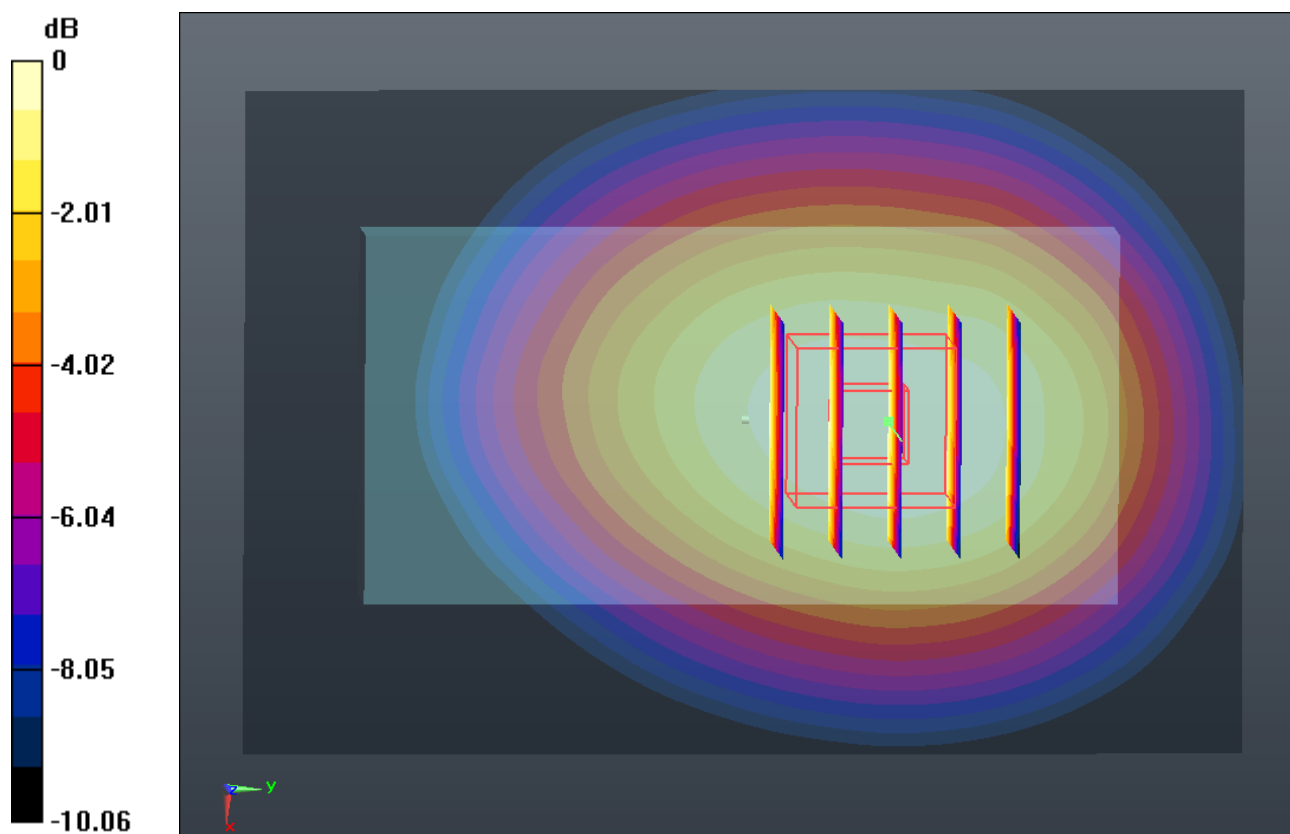
Communication System: GPRS/EDGE (2 Tx slots); Frequency: 848.8 MHz; Duty Cycle: 1:4  
Medium: MSL\_835\_130622 Medium parameters used:  $f = 849$  MHz;  $\sigma = 0.997$  mho/m;  $\epsilon_r = 54.707$ ;  
 $\rho = 1000$  kg/m<sup>3</sup>  
Ambient Temperature : 23.1 °C; Liquid Temperature : 21.1 °C

DASY5 Configuration:

- Probe: EX3DV4 - SN3820; ConvF(9.07, 9.07, 9.07); Calibrated: 2012-12-10
- Sensor-Surface: 2mm (Mechanical Surface Detection)
- Electronics: DAE4 Sn679; Calibrated: 2013-1-16
- Phantom: SAM1; Type: SAM; Serial: TP-1479
- Measurement SW: DASY52, Version 52.8 (4); SEMCAD X Version 14.4.5 (3634)

**Ch251/Area Scan (61x91x1):** Measurement grid: dx=15mm, dy=15mm  
Maximum value of SAR (interpolated) = 0.955 mW/g

**Ch251/Zoom Scan (5x5x7)/Cube 0:** Measurement grid: dx=8mm, dy=8mm, dz=5mm  
Reference Value = 27.030 V/m; Power Drift = 0.01 dB  
Peak SAR (extrapolated) = 1.059 W/kg  
**SAR(1 g) = 0.813 mW/g; SAR(10 g) = 0.590 mW/g**  
Maximum value of SAR (measured) = 0.948 mW/g



0 dB = 0.950mW/g

**#04\_GSM850\_GPRS (2 Tx slots)\_Left Side 1cm\_Ch251**

**DUT: 361407**

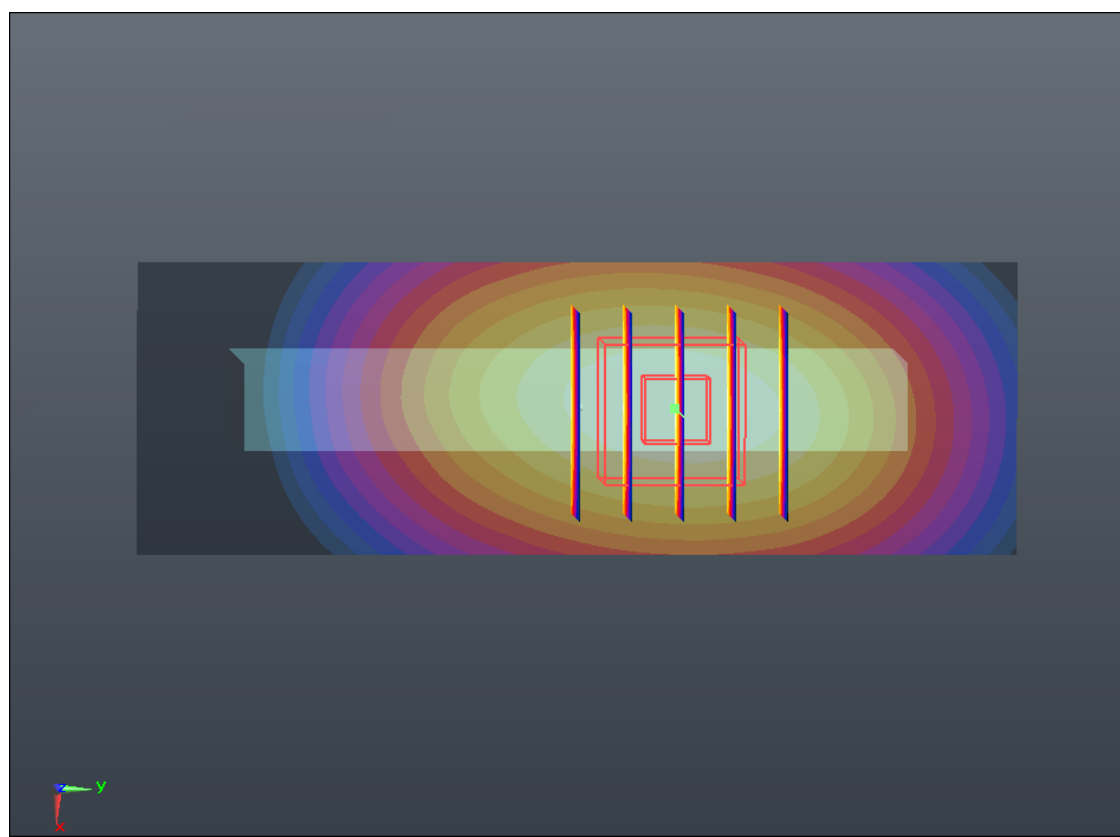
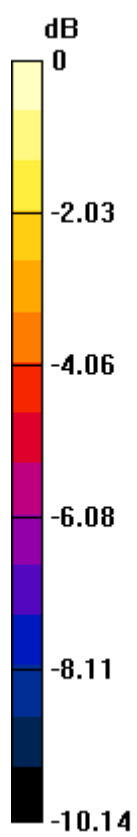
Communication System: GPRS/EDGE (2 Tx slots); Frequency: 848.8 MHz; Duty Cycle: 1:4  
Medium: MSL\_835\_130622 Medium parameters used:  $f = 849$  MHz;  $\sigma = 0.997$  mho/m;  $\epsilon_r = 54.707$ ;  
 $\rho = 1000$  kg/m<sup>3</sup>  
Ambient Temperature : 23.1 °C; Liquid Temperature : 21.1 °C

DASY5 Configuration:

- Probe: EX3DV4 - SN3820; ConvF(9.07, 9.07, 9.07); Calibrated: 2012-12-10
- Sensor-Surface: 2mm (Mechanical Surface Detection)
- Electronics: DAE4 Sn679; Calibrated: 2013-1-16
- Phantom: SAM1; Type: SAM; Serial: TP-1479
- Measurement SW: DASY52, Version 52.8 (4); SEMCAD X Version 14.4.5 (3634)

**Ch251/Area Scan (31x91x1):** Measurement grid: dx=15mm, dy=15mm  
Maximum value of SAR (interpolated) = 0.622 mW/g

**Ch251/Zoom Scan (5x5x7)/Cube 0:** Measurement grid: dx=8mm, dy=8mm, dz=5mm  
Reference Value = 22.009 V/m; Power Drift = 0.01 dB  
Peak SAR (extrapolated) = 0.711 W/kg  
**SAR(1 g) = 0.504 mW/g; SAR(10 g) = 0.343 mW/g**  
Maximum value of SAR (measured) = 0.620 mW/g



0 dB = 0.620mW/g

**#05\_GSM850\_GPRS (2 Tx slots)\_Right Side 1cm\_Ch251**

**DUT: 361407**

Communication System: GPRS/EDGE (2 Tx slots); Frequency: 848.8 MHz; Duty Cycle: 1:4  
Medium: MSL\_835\_130622 Medium parameters used:  $f = 849$  MHz;  $\sigma = 0.997$  mho/m;  $\epsilon_r = 54.707$ ;  
 $\rho = 1000$  kg/m<sup>3</sup>  
Ambient Temperature : 23.1 °C; Liquid Temperature : 21.1 °C

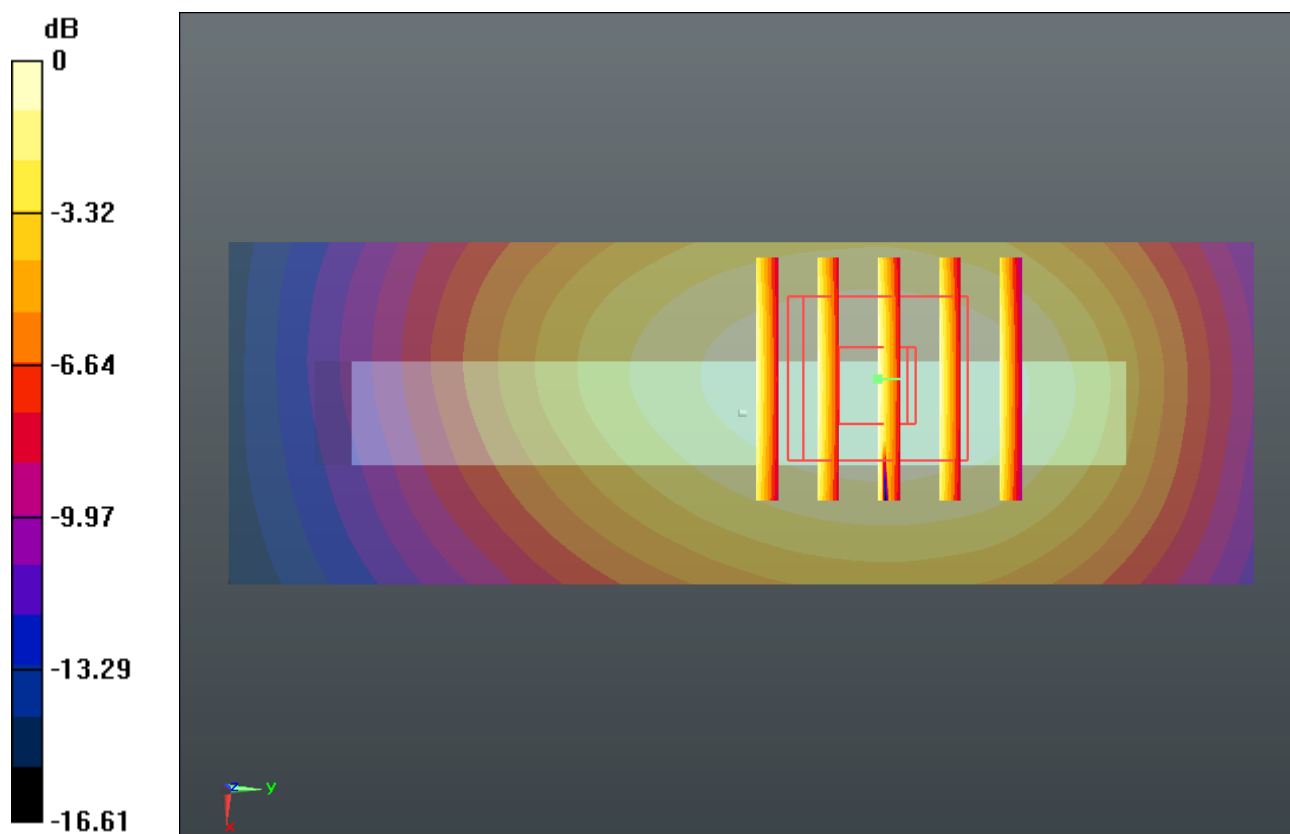
DASY5 Configuration:

- Probe: EX3DV4 - SN3820; ConvF(9.07, 9.07, 9.07); Calibrated: 2012-12-10
- Sensor-Surface: 2mm (Mechanical Surface Detection)
- Electronics: DAE4 Sn679; Calibrated: 2013-1-16
- Phantom: SAM1; Type: SAM; Serial: TP-1479
- Measurement SW: DASY52, Version 52.8 (4); SEMCAD X Version 14.4.5 (3634)

**Ch251/Area Scan (31x91x1):** Measurement grid: dx=15mm, dy=15mm  
Maximum value of SAR (interpolated) = 0.765 mW/g

**Ch251/Zoom Scan (5x5x7)/Cube 0:** Measurement grid: dx=8mm, dy=8mm, dz=5mm  
Reference Value = 23.752 V/m; Power Drift = 0.04 dB  
Peak SAR (extrapolated) = 0.847 W/kg  
**SAR(1 g) = 0.633 mW/g; SAR(10 g) = 0.441 mW/g**  
Maximum value of SAR (measured) = 0.762 mW/g





**#06\_GSM850\_GPRS (2 Tx slots)\_Top Side 1cm\_Ch251**

**DUT: 361407**

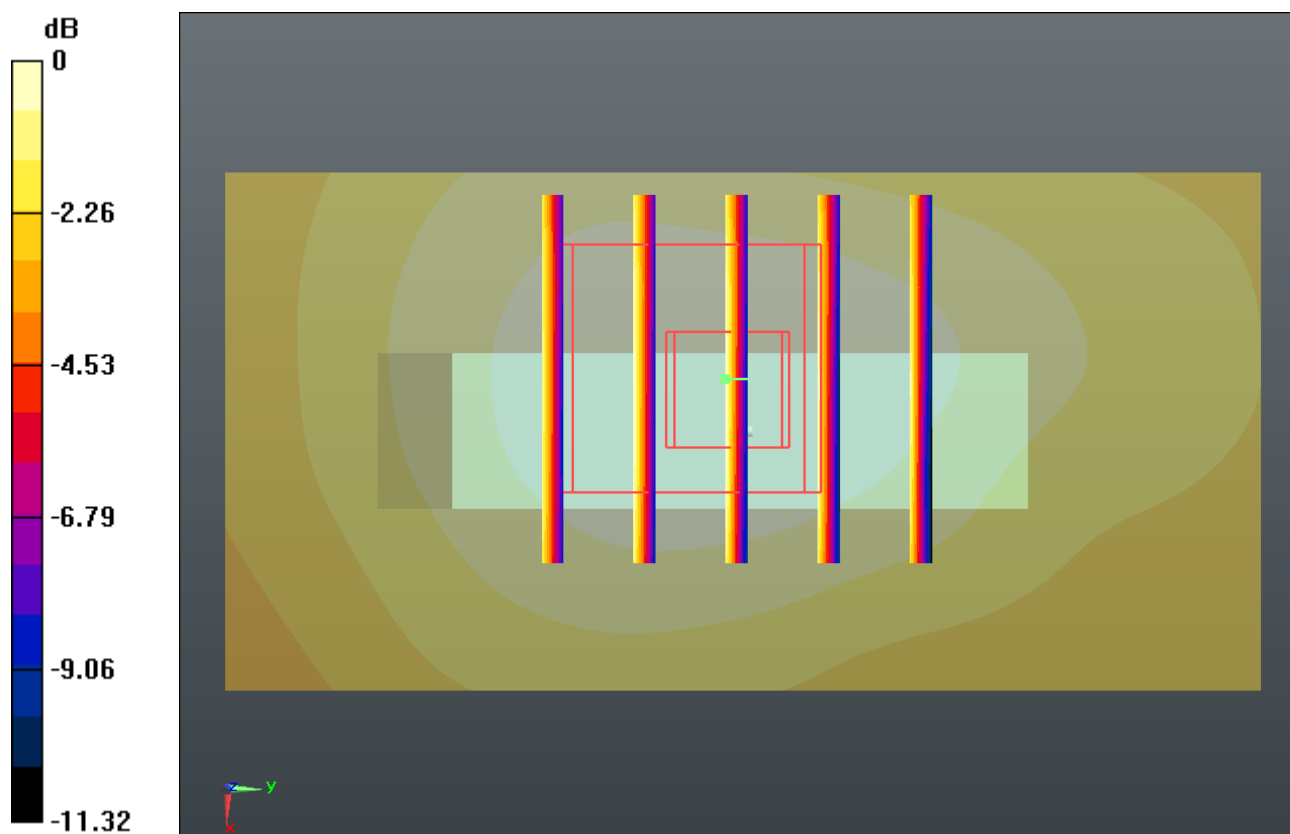
Communication System: GPRS/EDGE (2 Tx slots); Frequency: 848.8 MHz; Duty Cycle: 1:4  
Medium: MSL\_835\_130622 Medium parameters used:  $f = 849$  MHz;  $\sigma = 0.997$  mho/m;  $\epsilon_r = 54.707$ ;  
 $\rho = 1000$  kg/m<sup>3</sup>  
Ambient Temperature : 23.1 °C; Liquid Temperature : 21.1 °C

DASY5 Configuration:

- Probe: EX3DV4 - SN3820; ConvF(9.07, 9.07, 9.07); Calibrated: 2012-12-10
- Sensor-Surface: 2mm (Mechanical Surface Detection)
- Electronics: DAE4 Sn679; Calibrated: 2013-1-16
- Phantom: SAM1; Type: SAM; Serial: TP-1479
- Measurement SW: DASY52, Version 52.8 (4); SEMCAD X Version 14.4.5 (3634)

**Ch251/Area Scan (31x61x1):** Measurement grid: dx=15mm, dy=15mm  
Maximum value of SAR (interpolated) = 0.084 mW/g

**Ch251/Zoom Scan (5x5x7)/Cube 0:** Measurement grid: dx=8mm, dy=8mm, dz=5mm  
Reference Value = 8.484 V/m; Power Drift = -0.01 dB  
Peak SAR (extrapolated) = 0.103 W/kg  
**SAR(1 g) = 0.067 mW/g; SAR(10 g) = 0.046 mW/g**  
Maximum value of SAR (measured) = 0.085 mW/g



**#07\_GSM850\_GPRS (2 Tx slots)\_Front 1cm\_Ch128**

**DUT: 350802**

Communication System: GPRS/EDGE (2 Tx slots); Frequency: 824.2 MHz; Duty Cycle: 1:4  
Medium: MSL\_835\_130622 Medium parameters used:  $f = 824.2$  MHz;  $\sigma = 0.973$  mho/m;  $\epsilon_r = 54.944$ ;  
 $\rho = 1000$  kg/m<sup>3</sup>  
Ambient Temperature : 23.1 °C; Liquid Temperature : 21.1 °C

**DASY5 Configuration:**

- Probe: EX3DV4 - SN3820; ConvF(9.07, 9.07, 9.07); Calibrated: 2012-12-10
- Sensor-Surface: 2mm (Mechanical Surface Detection)
- Electronics: DAE4 Sn679; Calibrated: 2013-1-16
- Phantom: SAM1; Type: SAM; Serial: TP-1479
- Measurement SW: DASY52, Version 52.8 (4); SEMCAD X Version 14.4.5 (3634)

**Ch128/Area Scan (61x91x1):** Measurement grid: dx=15mm, dy=15mm

Maximum value of SAR (interpolated) = 1.133 mW/g

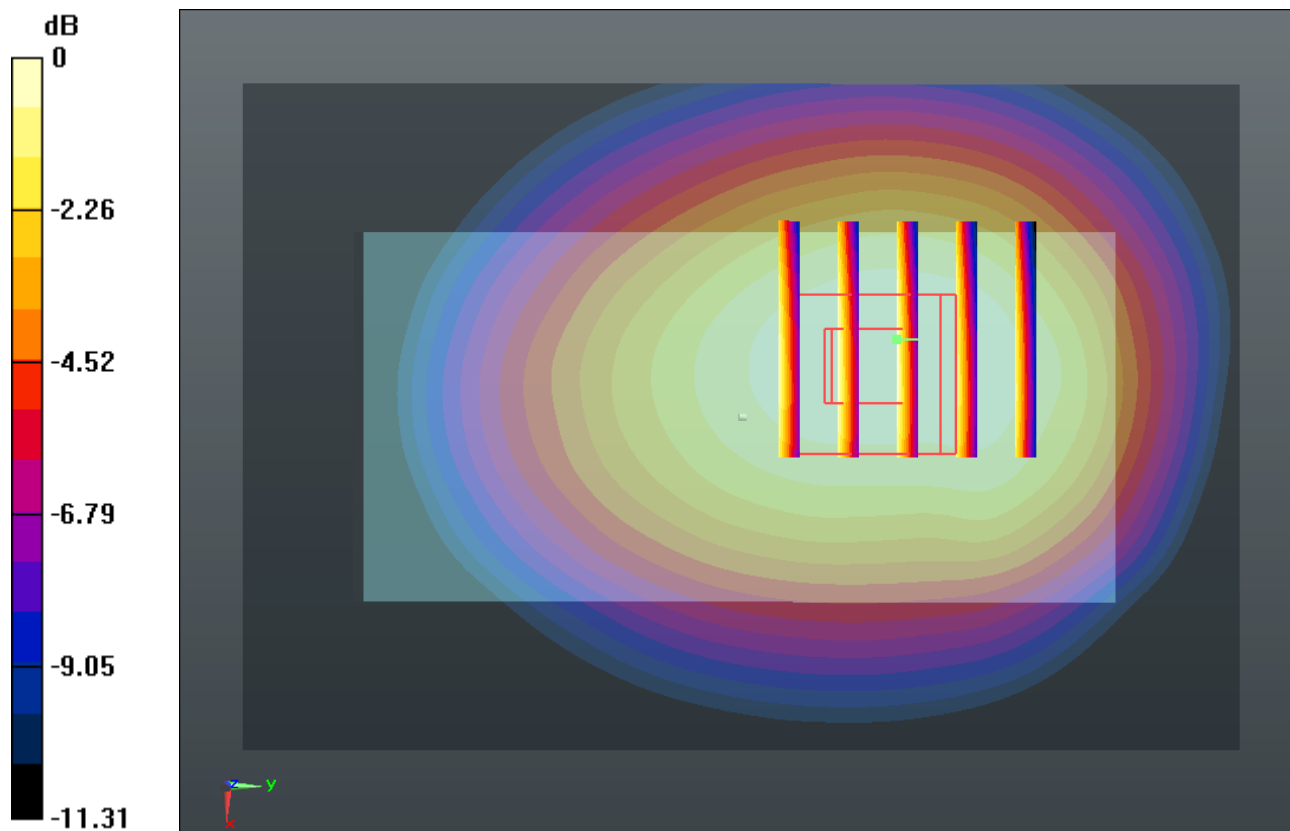
**Ch128/Zoom Scan (5x5x7)/Cube 0:** Measurement grid: dx=8mm, dy=8mm, dz=5mm

Reference Value = 28.624 V/m; Power Drift = 0.06 dB

Peak SAR (extrapolated) = 1.265 W/kg

**SAR(1 g) = 0.955 mW/g; SAR(10 g) = 0.686 mW/g**

Maximum value of SAR (measured) = 1.115 mW/g



**#08\_GSM850\_GPRS (2 Tx slots)\_Front 1cm\_Ch189**

**DUT: 361407**

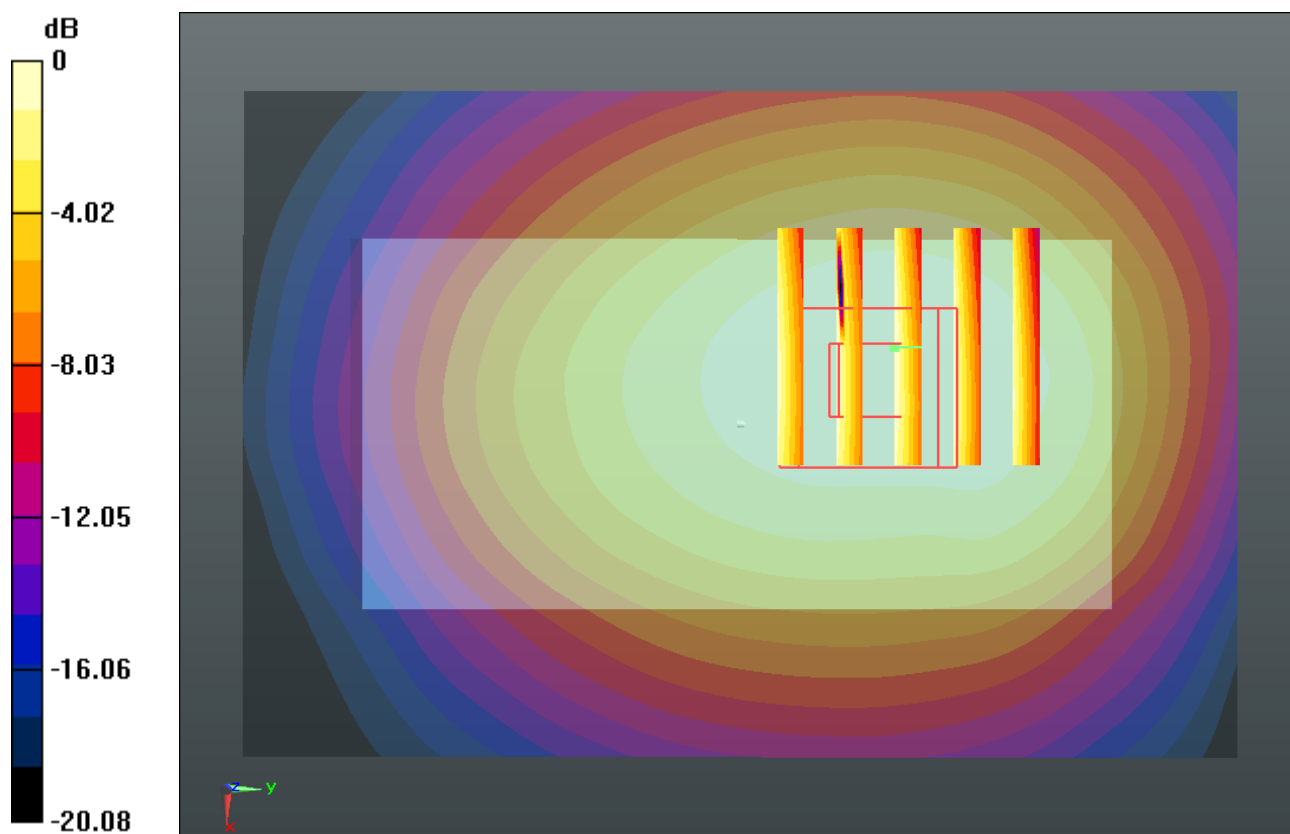
Communication System: GPRS/EDGE (2 Tx slots); Frequency: 836.4 MHz; Duty Cycle: 1:4  
Medium: MSL\_835\_130622 Medium parameters used:  $f = 836.4 \text{ MHz}$ ;  $\sigma = 0.984 \text{ mho/m}$ ;  $\epsilon_r = 54.837$ ;  $\rho = 1000 \text{ kg/m}^3$   
Ambient Temperature :  $23.1 \text{ }^\circ\text{C}$ ; Liquid Temperature :  $21.1 \text{ }^\circ\text{C}$

DASY5 Configuration:

- Probe: EX3DV4 - SN3820; ConvF(9.07, 9.07, 9.07); Calibrated: 2012-12-10
- Sensor-Surface: 2mm (Mechanical Surface Detection)
- Electronics: DAE4 Sn679; Calibrated: 2013-1-16
- Phantom: SAM1; Type: SAM; Serial: TP-1479
- Measurement SW: DASY52, Version 52.8 (4); SEMCAD X Version 14.4.5 (3634)

**Ch189/Area Scan (61x91x1):** Measurement grid:  $dx=15\text{mm}$ ,  $dy=15\text{mm}$   
Maximum value of SAR (interpolated) =  $1.226 \text{ mW/g}$

**Ch189/Zoom Scan (5x5x7)/Cube 0:** Measurement grid:  $dx=8\text{mm}$ ,  $dy=8\text{mm}$ ,  $dz=5\text{mm}$   
Reference Value =  $29.693 \text{ V/m}$ ; Power Drift =  $0.06 \text{ dB}$   
Peak SAR (extrapolated) =  $1.667 \text{ W/kg}$   
**SAR(1 g) =  $1.030 \text{ mW/g}$ ; SAR(10 g) =  $0.725 \text{ mW/g}$**   
Maximum value of SAR (measured) =  $1.196 \text{ mW/g}$





**#09\_GSM850\_GPRS (2 Tx slots)\_Back 1cm\_Ch128**

**DUT: 361407**

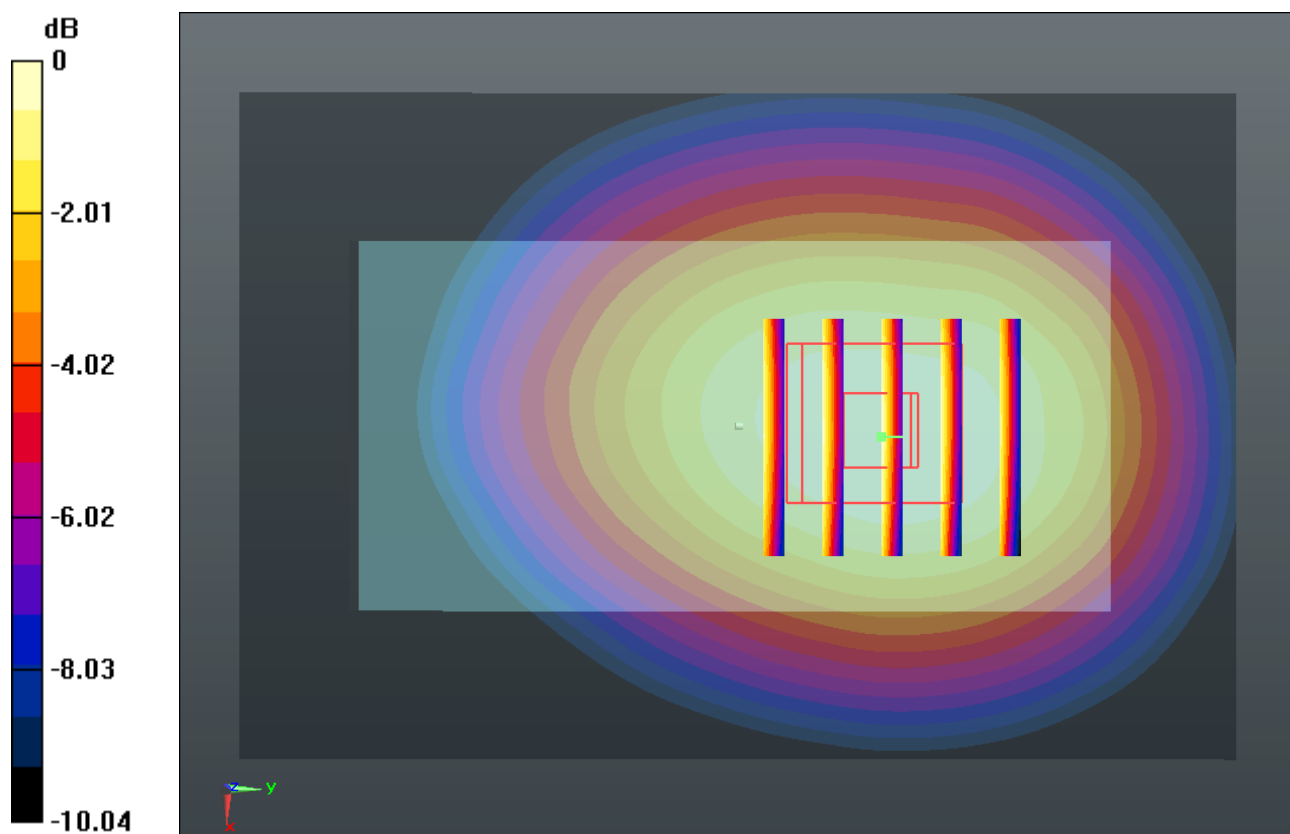
Communication System: GPRS/EDGE (2 Tx slots); Frequency: 824.2 MHz; Duty Cycle: 1:4  
Medium: MSL\_835\_130622 Medium parameters used:  $f = 824.2$  MHz;  $\sigma = 0.973$  mho/m;  $\epsilon_r = 54.944$ ;  
 $\rho = 1000$  kg/m<sup>3</sup>  
Ambient Temperature : 23.1 °C; Liquid Temperature : 21.1 °C

DASY5 Configuration:

- Probe: EX3DV4 - SN3820; ConvF(9.07, 9.07, 9.07); Calibrated: 2012-12-10
- Sensor-Surface: 2mm (Mechanical Surface Detection)
- Electronics: DAE4 Sn679; Calibrated: 2013-1-16
- Phantom: SAM1; Type: SAM; Serial: TP-1479
- Measurement SW: DASY52, Version 52.8 (4); SEMCAD X Version 14.4.5 (3634)

**Ch128/Area Scan (61x91x1):** Measurement grid: dx=15mm, dy=15mm  
Maximum value of SAR (interpolated) = 0.789 mW/g

**Ch128/Zoom Scan (5x5x7)/Cube 0:** Measurement grid: dx=8mm, dy=8mm, dz=5mm  
Reference Value = 24.648 V/m; Power Drift = -0.02 dB  
Peak SAR (extrapolated) = 0.877 W/kg  
**SAR(1 g) = 0.675 mW/g; SAR(10 g) = 0.490 mW/g**  
Maximum value of SAR (measured) = 0.793 mW/g



**#10\_GSM850\_GPRS (2 Tx slots)\_Back 1cm\_Ch189**

**DUT: 361407**

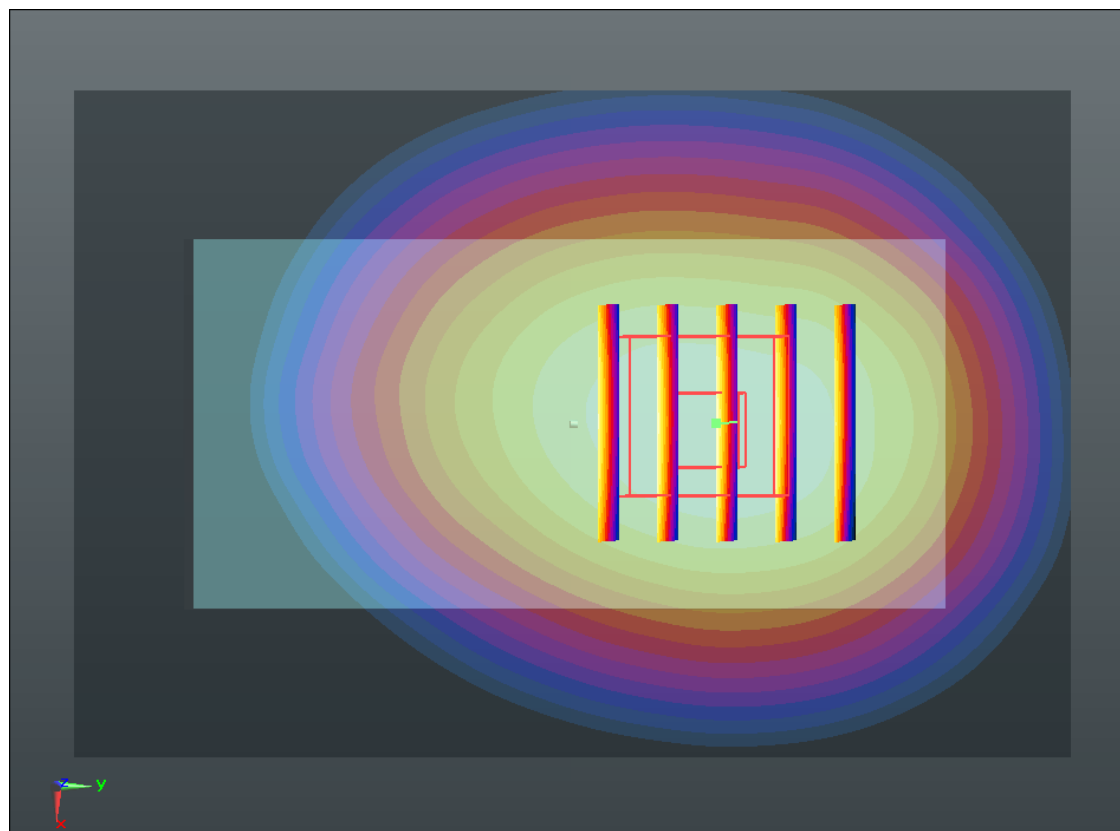
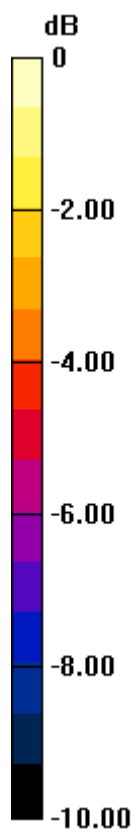
Communication System: GPRS/EDGE (2 Tx slots); Frequency: 836.4 MHz; Duty Cycle: 1:4  
Medium: MSL\_835\_130622 Medium parameters used:  $f = 836.4$  MHz;  $\sigma = 0.984$  mho/m;  $\epsilon_r = 54.837$ ;  $\rho = 1000$  kg/m<sup>3</sup>  
Ambient Temperature : 23.1 °C; Liquid Temperature : 21.1 °C

DASY5 Configuration:

- Probe: EX3DV4 - SN3820; ConvF(9.07, 9.07, 9.07); Calibrated: 2012-12-10
- Sensor-Surface: 2mm (Mechanical Surface Detection)
- Electronics: DAE4 Sn679; Calibrated: 2013-1-16
- Phantom: SAM1; Type: SAM; Serial: TP-1479
- Measurement SW: DASY52, Version 52.8 (4); SEMCAD X Version 14.4.5 (3634)

**Ch189/Area Scan (61x91x1):** Measurement grid: dx=15mm, dy=15mm  
Maximum value of SAR (interpolated) = 0.836 mW/g

**Ch189/Zoom Scan (5x5x7)/Cube 0:** Measurement grid: dx=8mm, dy=8mm, dz=5mm  
Reference Value = 25.373 V/m; Power Drift = -0.00051 dB  
Peak SAR (extrapolated) = 0.934 W/kg  
**SAR(1 g) = 0.717 mW/g; SAR(10 g) = 0.519 mW/g**  
Maximum value of SAR (measured) = 0.841 mW/g



0 dB = 0.840mW/g

**#11\_GSM1900\_GPRS (2 Tx slots)\_Front 1cm\_Ch512**

**DUT: 361407**

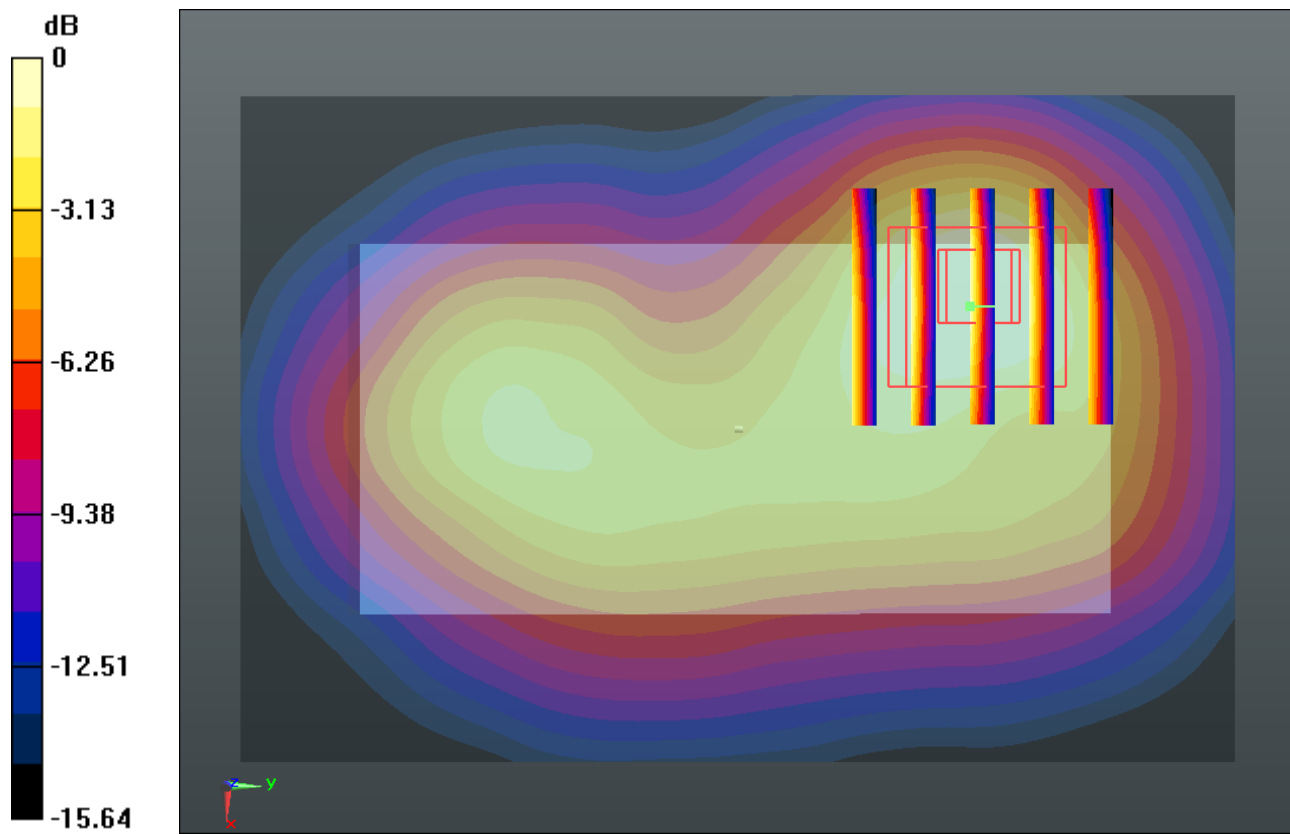
Communication System: GPRS/EDGE (2 Tx slots); Frequency: 1850.2 MHz; Duty Cycle: 1:4  
Medium: MSL\_1900\_130622 Medium parameters used:  $f = 1850.2 \text{ MHz}$ ;  $\sigma = 1.491 \text{ mho/m}$ ;  $\epsilon_r = 53.394$ ;  $\rho = 1000 \text{ kg/m}^3$   
Ambient Temperature :  $23.3 \text{ }^\circ\text{C}$ ; Liquid Temperature :  $21.3 \text{ }^\circ\text{C}$

DASY5 Configuration:

- Probe: EX3DV4 - SN3820; ConvF(7.3, 7.3, 7.3); Calibrated: 2012-12-10
- Sensor-Surface: 2mm (Mechanical Surface Detection)
- Electronics: DAE4 Sn679; Calibrated: 2013-1-16
- Phantom: SAM2; Type: SAM; Serial: TP-1477
- Measurement SW: DASY52, Version 52.8 (4); SEMCAD X Version 14.4.5 (3634)

**Ch512/Area Scan (61x91x1):** Measurement grid:  $dx=15\text{mm}$ ,  $dy=15\text{mm}$   
Maximum value of SAR (interpolated) =  $0.827 \text{ mW/g}$

**Ch512/Zoom Scan (5x5x7)/Cube 0:** Measurement grid:  $dx=8\text{mm}$ ,  $dy=8\text{mm}$ ,  $dz=5\text{mm}$   
Reference Value =  $13.860 \text{ V/m}$ ; Power Drift =  $-0.03 \text{ dB}$   
Peak SAR (extrapolated) =  $0.954 \text{ W/kg}$   
**SAR(1 g) =  $0.579 \text{ mW/g}$ ; SAR(10 g) =  $0.331 \text{ mW/g}$**   
Maximum value of SAR (measured) =  $0.754 \text{ mW/g}$



0 dB = 0.750mW/g

**#12\_GSM1900\_GPRS (2 Tx slots)\_Back 1cm\_Ch512**

**DUT: 361407**

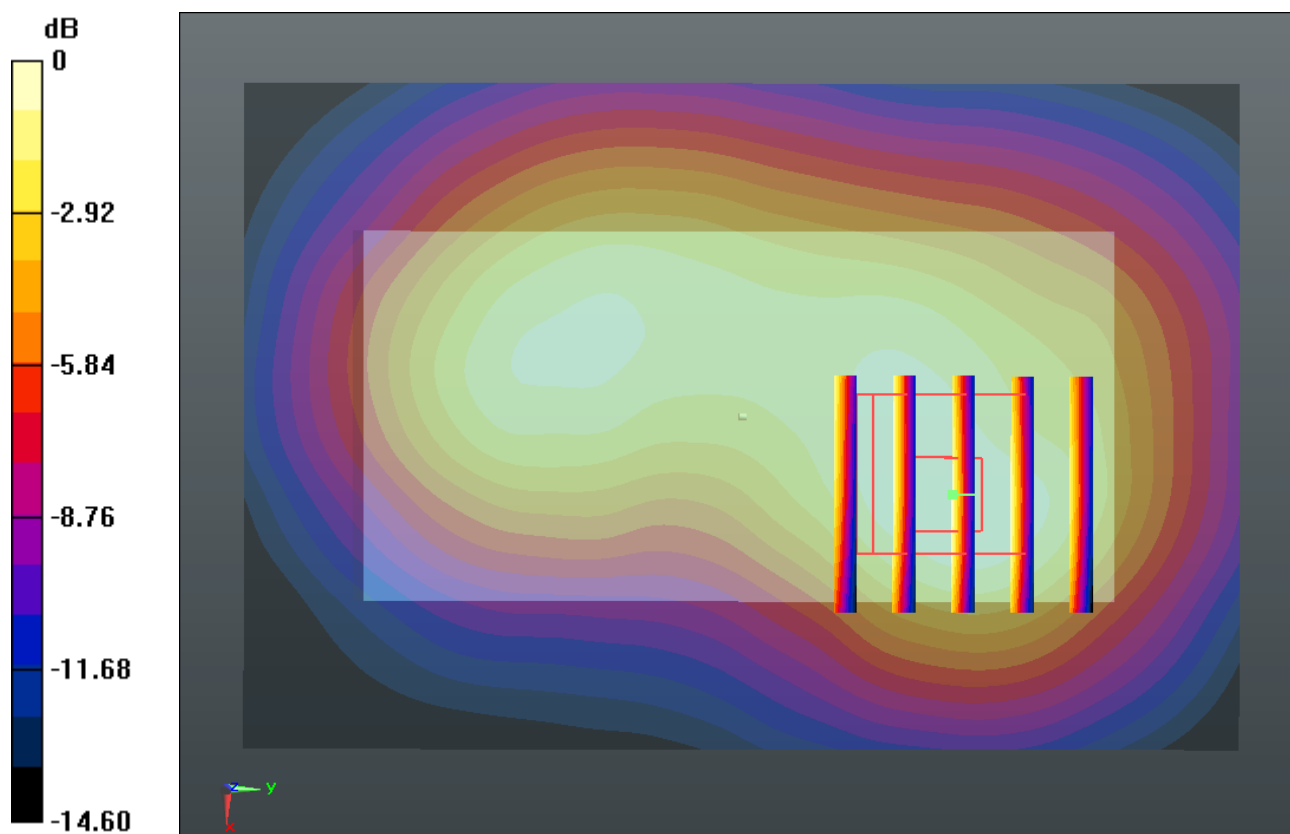
Communication System: GPRS/EDGE (2 Tx slots); Frequency: 1850.2 MHz; Duty Cycle: 1:4  
Medium: MSL\_1900\_130622 Medium parameters used:  $f = 1850.2 \text{ MHz}$ ;  $\sigma = 1.491 \text{ mho/m}$ ;  $\epsilon_r = 53.394$ ;  $\rho = 1000 \text{ kg/m}^3$   
Ambient Temperature :  $23.3 \text{ }^\circ\text{C}$ ; Liquid Temperature :  $21.3 \text{ }^\circ\text{C}$

DASY5 Configuration:

- Probe: EX3DV4 - SN3820; ConvF(7.3, 7.3, 7.3); Calibrated: 2012-12-10
- Sensor-Surface: 2mm (Mechanical Surface Detection)
- Electronics: DAE4 Sn679; Calibrated: 2013-1-16
- Phantom: SAM2; Type: SAM; Serial: TP-1477
- Measurement SW: DASY52, Version 52.8 (4); SEMCAD X Version 14.4.5 (3634)

**Ch512/Area Scan (61x91x1):** Measurement grid:  $dx=15\text{mm}$ ,  $dy=15\text{mm}$   
Maximum value of SAR (interpolated) =  $0.484 \text{ mW/g}$

**Ch512/Zoom Scan (5x5x7)/Cube 0:** Measurement grid:  $dx=8\text{mm}$ ,  $dy=8\text{mm}$ ,  $dz=5\text{mm}$   
Reference Value =  $12.198 \text{ V/m}$ ; Power Drift =  $-0.06 \text{ dB}$   
Peak SAR (extrapolated) =  $0.537 \text{ W/kg}$   
**SAR(1 g) =  $0.342 \text{ mW/g}$ ; SAR(10 g) =  $0.211 \text{ mW/g}$**   
Maximum value of SAR (measured) =  $0.445 \text{ mW/g}$





**#13\_GSM1900\_GPRS (2 Tx slots)\_Left Side 1cm\_Ch512**

**DUT: 361407**

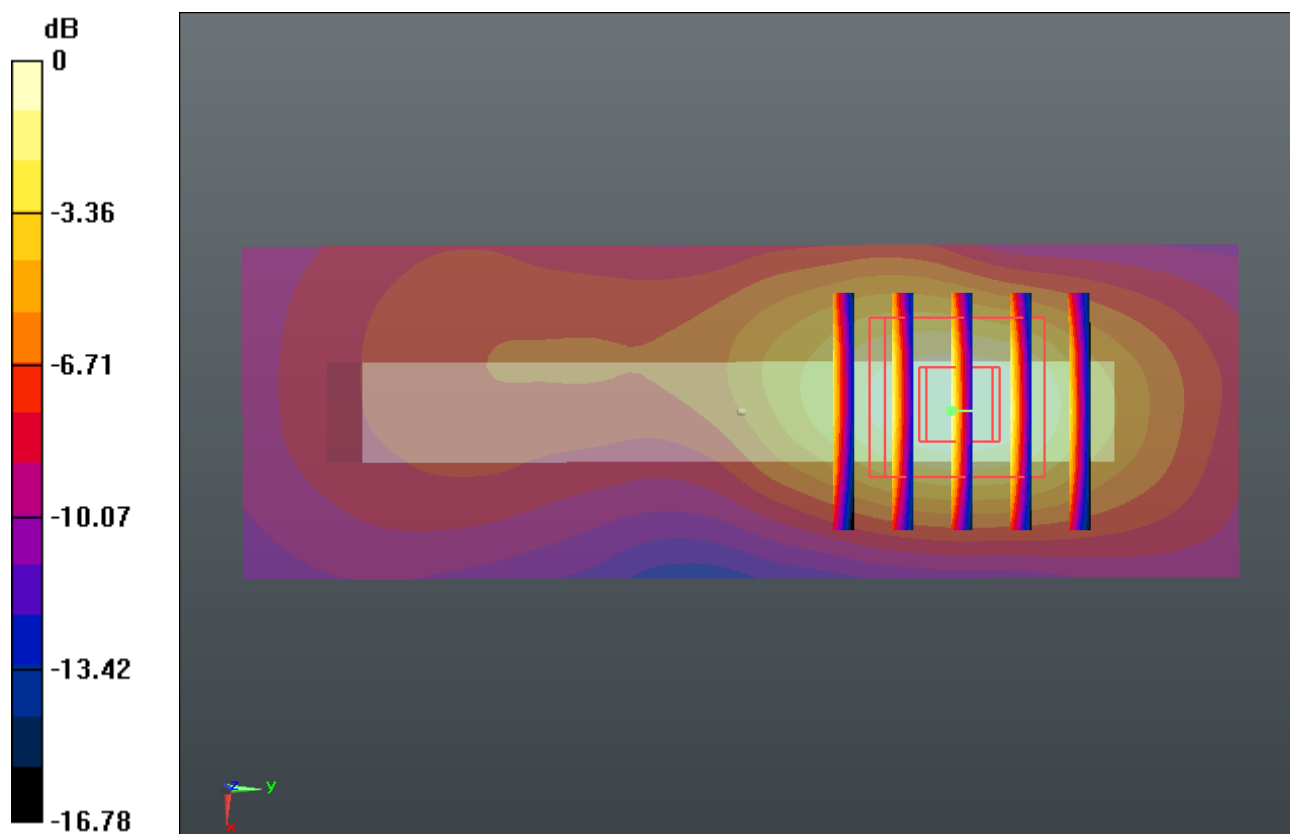
Communication System: GPRS/EDGE (2 Tx slots); Frequency: 1850.2 MHz; Duty Cycle: 1:4  
Medium: MSL\_1900\_130622 Medium parameters used:  $f = 1850.2 \text{ MHz}$ ;  $\sigma = 1.491 \text{ mho/m}$ ;  $\epsilon_r = 53.394$ ;  $\rho = 1000 \text{ kg/m}^3$   
Ambient Temperature :  $23.3 \text{ }^\circ\text{C}$ ; Liquid Temperature :  $21.3 \text{ }^\circ\text{C}$

DASY5 Configuration:

- Probe: EX3DV4 - SN3820; ConvF(7.3, 7.3, 7.3); Calibrated: 2012-12-10
- Sensor-Surface: 2mm (Mechanical Surface Detection)
- Electronics: DAE4 Sn679; Calibrated: 2013-1-16
- Phantom: SAM2; Type: SAM; Serial: TP-1477
- Measurement SW: DASY52, Version 52.8 (4); SEMCAD X Version 14.4.5 (3634)

**Ch512/Area Scan (31x91x1):** Measurement grid:  $dx=15\text{mm}$ ,  $dy=15\text{mm}$   
Maximum value of SAR (interpolated) =  $0.296 \text{ mW/g}$

**Ch512/Zoom Scan (5x5x7)/Cube 0:** Measurement grid:  $dx=8\text{mm}$ ,  $dy=8\text{mm}$ ,  $dz=5\text{mm}$   
Reference Value =  $6.693 \text{ V/m}$ ; Power Drift =  $0.11 \text{ dB}$   
Peak SAR (extrapolated) =  $0.340 \text{ W/kg}$   
**SAR(1 g) =  $0.199 \text{ mW/g}$ ; SAR(10 g) =  $0.106 \text{ mW/g}$**   
Maximum value of SAR (measured) =  $0.273 \text{ mW/g}$



0 dB = 0.270mW/g

**#14\_GSM1900\_GPRS (2 Tx slots)\_Right Side 1cm\_Ch512**

**DUT: 361407**

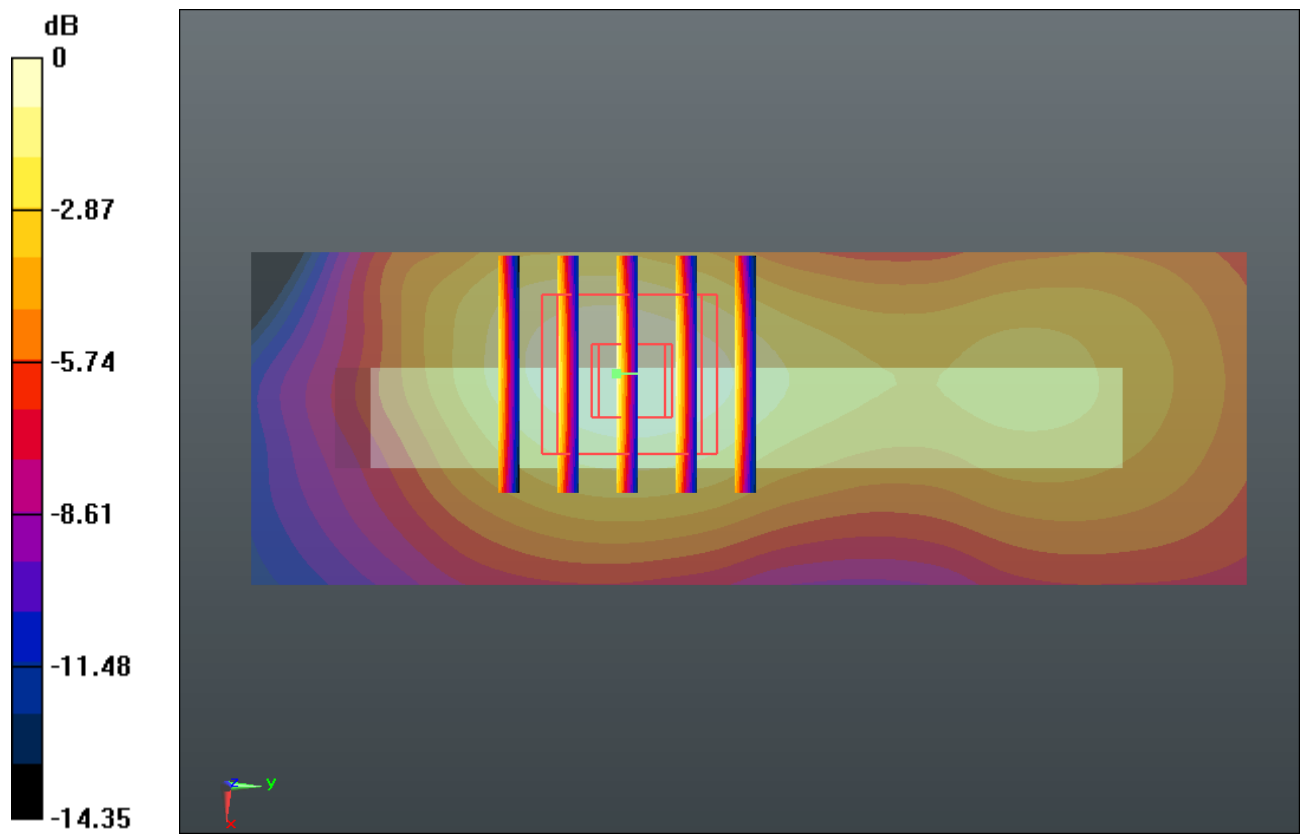
Communication System: GPRS/EDGE (2 Tx slots); Frequency: 1850.2 MHz; Duty Cycle: 1:4  
Medium: MSL\_1900\_130622 Medium parameters used:  $f = 1850.2 \text{ MHz}$ ;  $\sigma = 1.491 \text{ mho/m}$ ;  $\epsilon_r = 53.394$ ;  $\rho = 1000 \text{ kg/m}^3$   
Ambient Temperature :  $23.3 \text{ }^\circ\text{C}$ ; Liquid Temperature :  $21.3 \text{ }^\circ\text{C}$

DASY5 Configuration:

- Probe: EX3DV4 - SN3820; ConvF(7.3, 7.3, 7.3); Calibrated: 2012-12-10
- Sensor-Surface: 2mm (Mechanical Surface Detection)
- Electronics: DAE4 Sn679; Calibrated: 2013-1-16
- Phantom: SAM2; Type: SAM; Serial: TP-1477
- Measurement SW: DASY52, Version 52.8 (4); SEMCAD X Version 14.4.5 (3634)

**Ch512/Area Scan (31x91x1):** Measurement grid:  $dx=15\text{mm}$ ,  $dy=15\text{mm}$   
Maximum value of SAR (interpolated) =  $0.250 \text{ mW/g}$

**Ch512/Zoom Scan (5x5x7)/Cube 0:** Measurement grid:  $dx=8\text{mm}$ ,  $dy=8\text{mm}$ ,  $dz=5\text{mm}$   
Reference Value =  $10.149 \text{ V/m}$ ; Power Drift =  $0.09 \text{ dB}$   
Peak SAR (extrapolated) =  $0.299 \text{ W/kg}$   
**SAR(1 g) =  $0.193 \text{ mW/g}$ ; SAR(10 g) =  $0.118 \text{ mW/g}$**   
Maximum value of SAR (measured) =  $0.251 \text{ mW/g}$



**#15\_GSM1900\_GPRS (2 Tx slots)\_Top Side 1cm\_Ch512**

**DUT: 361407**

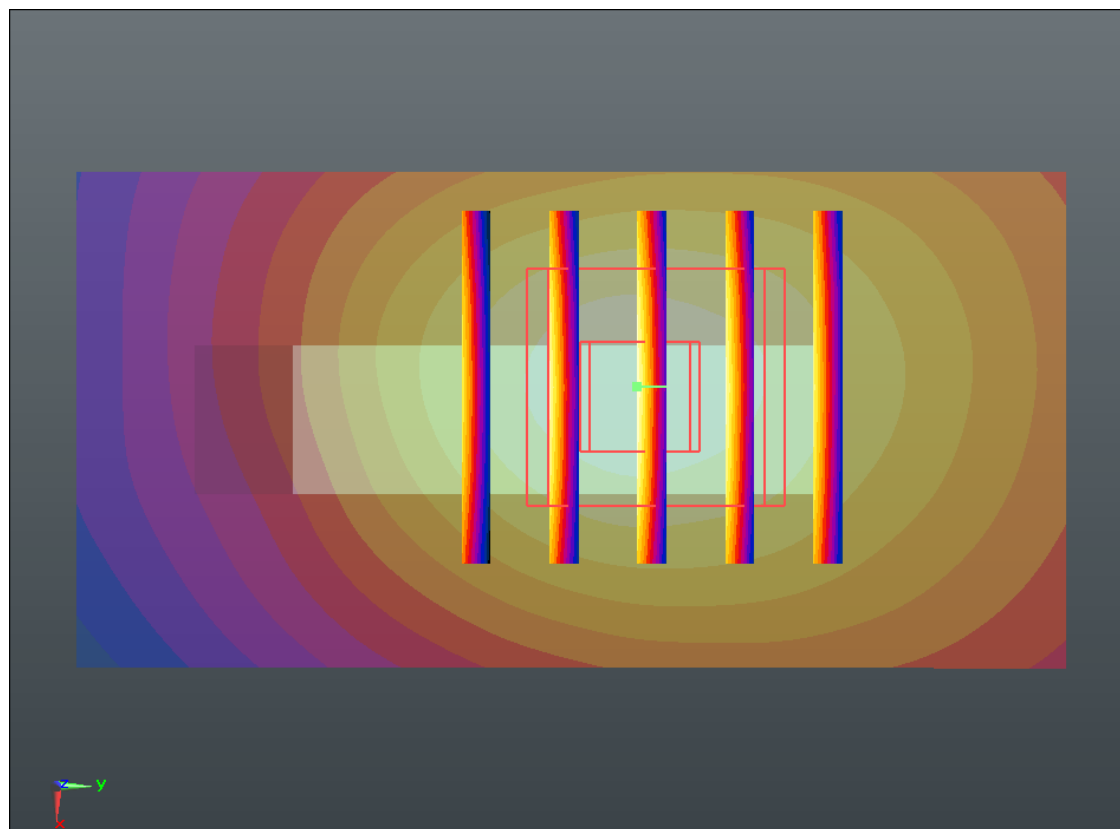
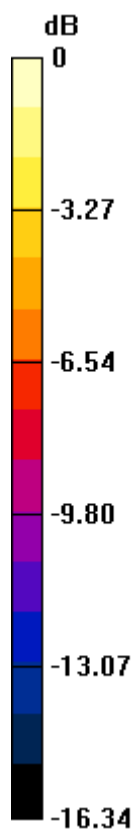
Communication System: GPRS/EDGE (2 Tx slots); Frequency: 1850.2 MHz; Duty Cycle: 1:4  
Medium: MSL\_1900\_130622 Medium parameters used:  $f = 1850.2 \text{ MHz}$ ;  $\sigma = 1.491 \text{ mho/m}$ ;  $\epsilon_r = 53.394$ ;  $\rho = 1000 \text{ kg/m}^3$   
Ambient Temperature :  $23.3 \text{ }^\circ\text{C}$ ; Liquid Temperature :  $21.3 \text{ }^\circ\text{C}$

DASY5 Configuration:

- Probe: EX3DV4 - SN3820; ConvF(7.3, 7.3, 7.3); Calibrated: 2012-12-10
- Sensor-Surface: 2mm (Mechanical Surface Detection)
- Electronics: DAE4 Sn679; Calibrated: 2013-1-16
- Phantom: SAM2; Type: SAM; Serial: TP-1477
- Measurement SW: DASY52, Version 52.8 (4); SEMCAD X Version 14.4.5 (3634)

**Ch512/Area Scan (31x61x1):** Measurement grid:  $dx=15\text{mm}$ ,  $dy=15\text{mm}$   
Maximum value of SAR (interpolated) =  $0.338 \text{ mW/g}$

**Ch512/Zoom Scan (5x5x7)/Cube 0:** Measurement grid:  $dx=8\text{mm}$ ,  $dy=8\text{mm}$ ,  $dz=5\text{mm}$   
Reference Value =  $13.505 \text{ V/m}$ ; Power Drift =  $0.02 \text{ dB}$   
Peak SAR (extrapolated) =  $0.414 \text{ W/kg}$   
**SAR(1 g) =  $0.265 \text{ mW/g}$ ; SAR(10 g) =  $0.155 \text{ mW/g}$**   
Maximum value of SAR (measured) =  $0.349 \text{ mW/g}$



0 dB = 0.350mW/g

**#16\_WLAN 2.4GHz\_802.11b\_1M\_Front 1cm\_Ch11**

**DUT: 361407**

Communication System: WIFI; Frequency: 2462 MHz; Duty Cycle: 1:1

Medium: MSL\_2450\_130622 Medium parameters used:  $f = 2462$  MHz;  $\sigma = 1.958$  mho/m;  $\epsilon_r =$

$50.903$ ;  $\rho = 1000$  kg/m<sup>3</sup>

Ambient Temperature :  $23.5$  °C; Liquid Temperature :  $21.6$  °C

DASY5 Configuration:

- Probe: EX3DV4 - SN3820; ConvF(6.84, 6.84, 6.84); Calibrated: 2012-12-10
- Sensor-Surface: 2mm (Mechanical Surface Detection)
- Electronics: DAE4 Sn679; Calibrated: 2013-1-16
- Phantom: SAM1; Type: SAM; Serial: TP-1479
- Measurement SW: DASY52, Version 52.8 (4); SEMCAD X Version 14.4.5 (3634)

**Ch11/Area Scan (71x111x1):** Measurement grid:  $dx=12$ mm,  $dy=12$ mm

Maximum value of SAR (interpolated) =  $0.320$  mW/g

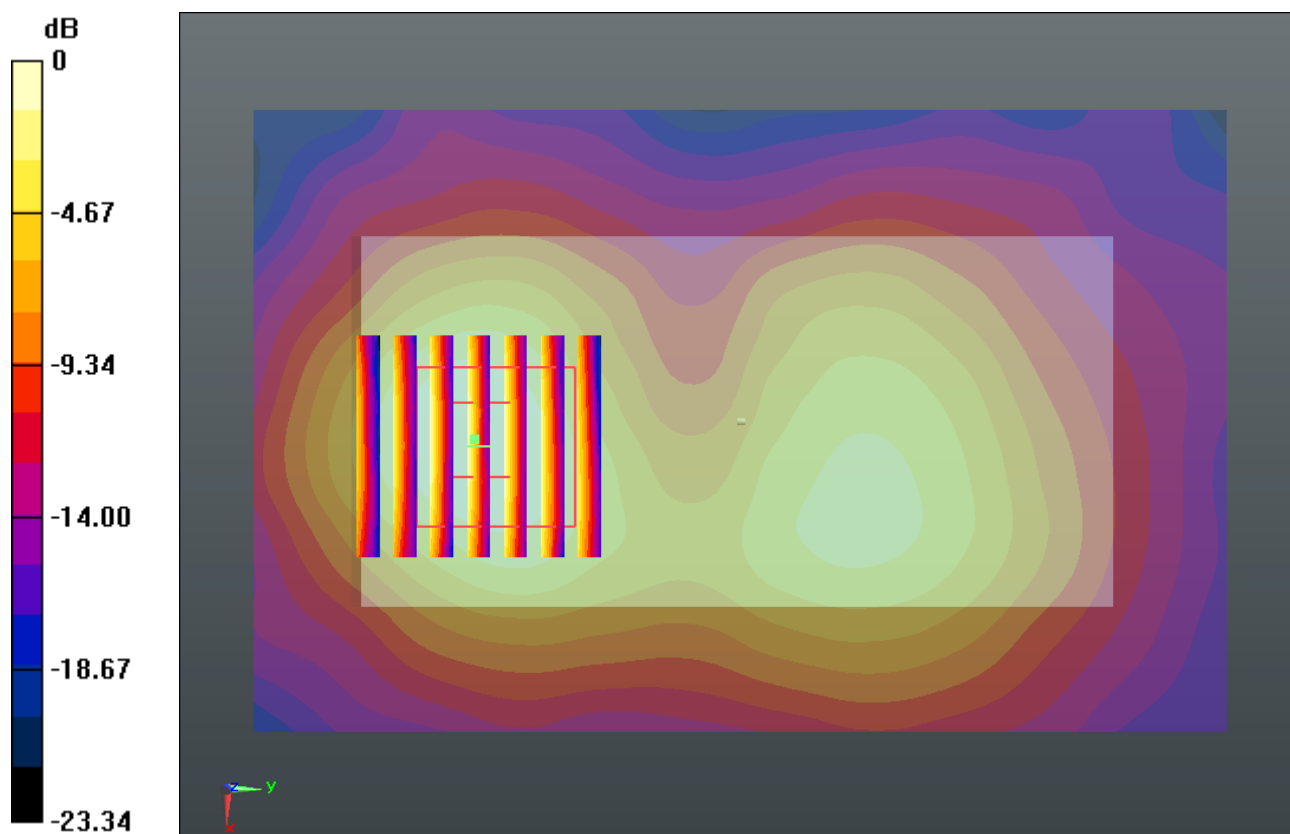
**Ch11/Zoom Scan (7x7x7)/Cube 0:** Measurement grid:  $dx=5$ mm,  $dy=5$ mm,  $dz=5$ mm

Reference Value =  $4.798$  V/m; Power Drift =  $-0.03$  dB

Peak SAR (extrapolated) =  $0.376$  W/kg

**SAR(1 g) =  $0.190$  mW/g; SAR(10 g) =  $0.096$  mW/g**

Maximum value of SAR (measured) =  $0.278$  mW/g



0 dB = 0.280mW/g



**#17\_WLAN 2.4GHz\_802.11b\_1M\_Back 1cm\_Ch11**

**DUT: 361407**

Communication System: WIFI; Frequency: 2462 MHz; Duty Cycle: 1:1

Medium: MSL\_2450\_130622 Medium parameters used:  $f = 2462$  MHz;  $\sigma = 1.958$  mho/m;  $\epsilon_r =$

$50.903$ ;  $\rho = 1000$  kg/m<sup>3</sup>

Ambient Temperature :  $23.5$  °C; Liquid Temperature :  $21.6$  °C

DASY5 Configuration:

- Probe: EX3DV4 - SN3820; ConvF(6.84, 6.84, 6.84); Calibrated: 2012-12-10
- Sensor-Surface: 2mm (Mechanical Surface Detection)
- Electronics: DAE4 Sn679; Calibrated: 2013-1-16
- Phantom: SAM1; Type: SAM; Serial: TP-1479
- Measurement SW: DASY52, Version 52.8 (4); SEMCAD X Version 14.4.5 (3634)

**Ch11/Area Scan (71x111x1):** Measurement grid:  $dx=12$ mm,  $dy=12$ mm

Maximum value of SAR (interpolated) =  $0.188$  mW/g

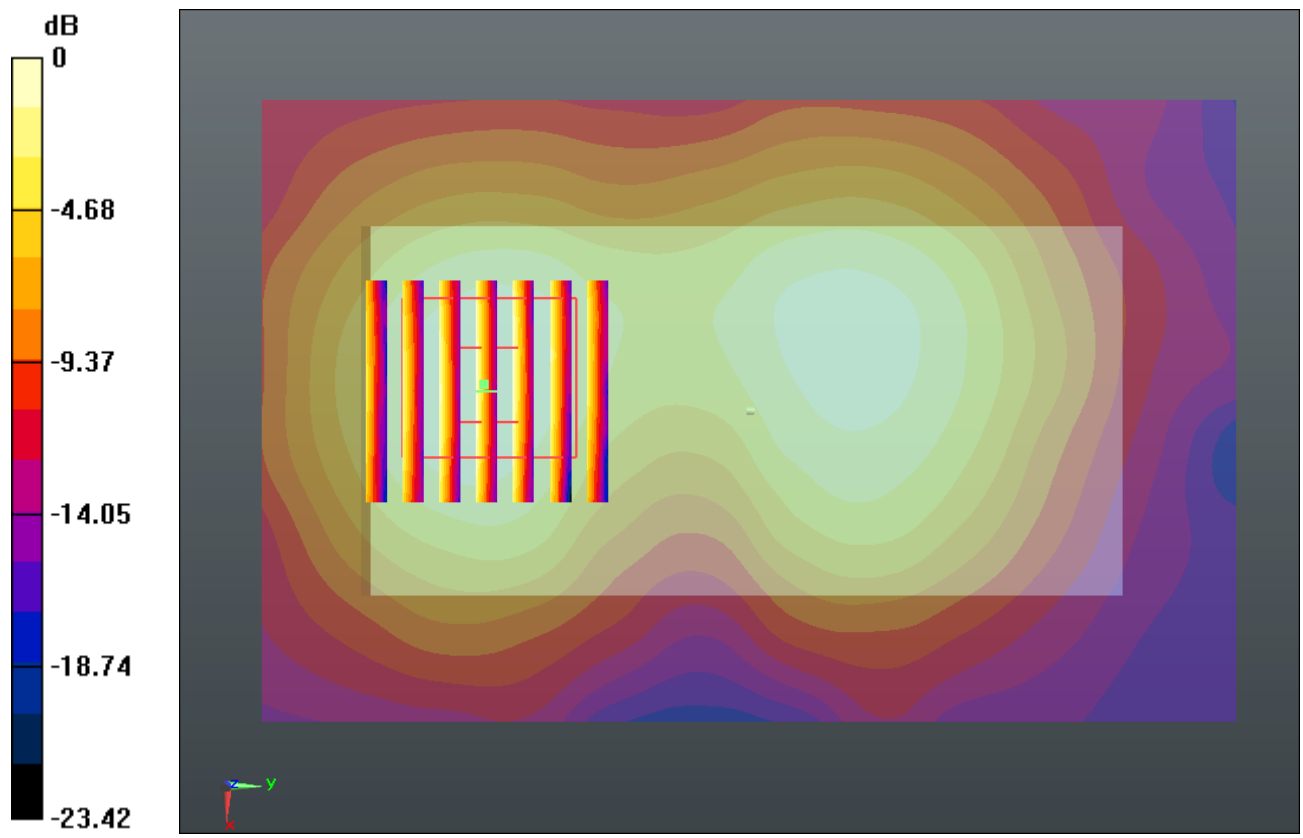
**Ch11/Zoom Scan (7x7x7)/Cube 0:** Measurement grid:  $dx=5$ mm,  $dy=5$ mm,  $dz=5$ mm

Reference Value =  $5.828$  V/m; Power Drift =  $0.10$  dB

Peak SAR (extrapolated) =  $0.240$  W/kg

**SAR(1 g) =  $0.130$  mW/g; SAR(10 g) =  $0.071$  mW/g**

Maximum value of SAR (measured) =  $0.183$  mW/g



0 dB = 0.180mW/g

**#18\_WLAN 2.4GHz\_802.11b\_1M\_Right Side 1cm\_Ch11**

**DUT: 361407**

Communication System: WIFI; Frequency: 2462 MHz; Duty Cycle: 1:1

Medium: MSL\_2450\_130622 Medium parameters used:  $f = 2462$  MHz;  $\sigma = 1.958$  mho/m;  $\epsilon_r =$

$50.903$ ;  $\rho = 1000$  kg/m<sup>3</sup>

Ambient Temperature :  $23.5$  °C; Liquid Temperature :  $21.6$  °C

DASY5 Configuration:

- Probe: EX3DV4 - SN3820; ConvF(6.84, 6.84, 6.84); Calibrated: 2012-12-10
- Sensor-Surface: 2mm (Mechanical Surface Detection)
- Electronics: DAE4 Sn679; Calibrated: 2013-1-16
- Phantom: SAM1; Type: SAM; Serial: TP-1479
- Measurement SW: DASY52, Version 52.8 (4); SEMCAD X Version 14.4.5 (3634)

**Ch11/Area Scan (41x111x1):** Measurement grid:  $dx=12$ mm,  $dy=12$ mm

Maximum value of SAR (interpolated) =  $0.138$  mW/g

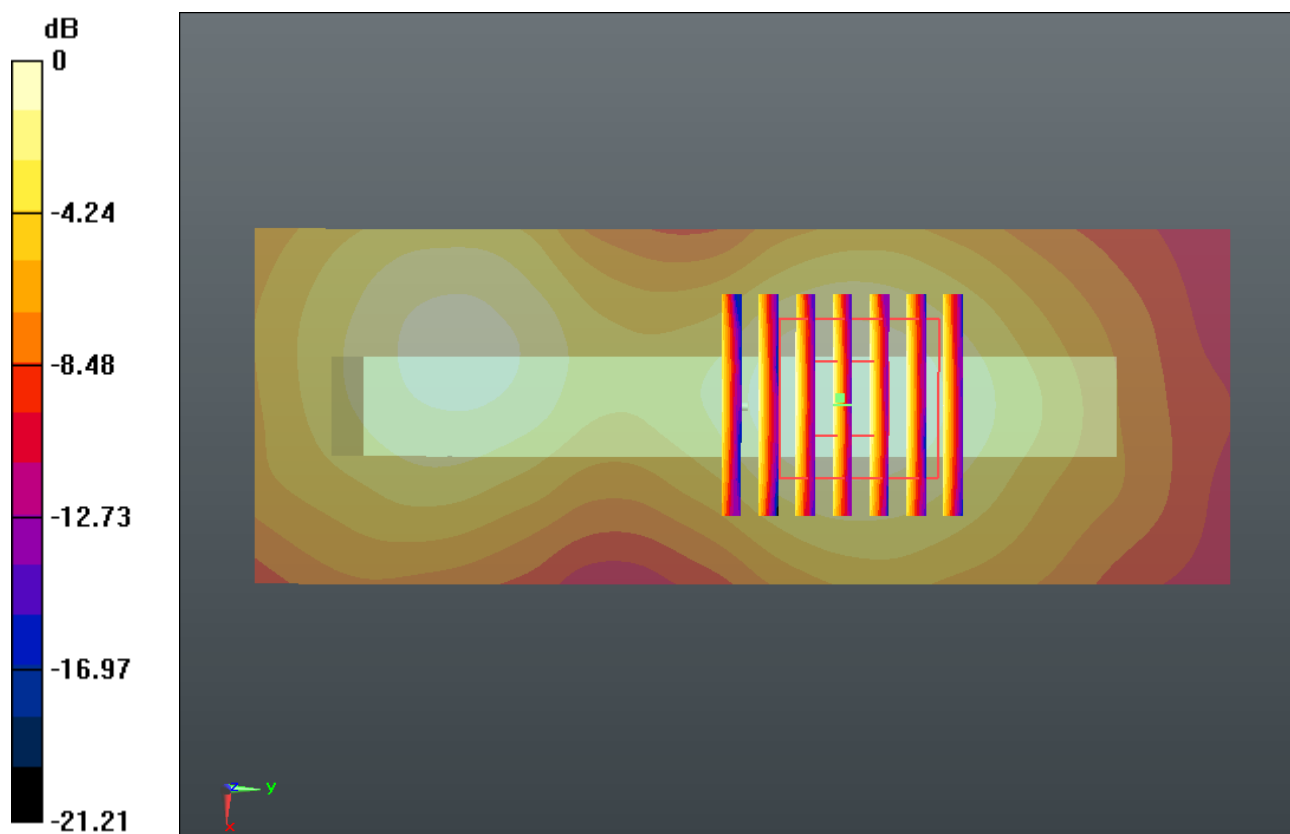
**Ch11/Zoom Scan (7x7x7)/Cube 0:** Measurement grid:  $dx=5$ mm,  $dy=5$ mm,  $dz=5$ mm

Reference Value =  $6.060$  V/m; Power Drift =  $0.0053$  dB

Peak SAR (extrapolated) =  $0.170$  W/kg

**SAR(1 g) =  $0.094$  mW/g; SAR(10 g) =  $0.052$  mW/g**

Maximum value of SAR (measured) =  $0.130$  mW/g



**#19\_WLAN 2.4GHz\_802.11b\_1M\_Bottom Side 1cm\_Ch11**

**DUT: 361407**

Communication System: WIFI; Frequency: 2462 MHz; Duty Cycle: 1:1

Medium: MSL\_2450\_130622 Medium parameters used:  $f = 2462$  MHz;  $\sigma = 1.958$  mho/m;  $\epsilon_r =$

$50.903$ ;  $\rho = 1000$  kg/m<sup>3</sup>

Ambient Temperature :  $23.5$  °C; Liquid Temperature :  $21.6$  °C

DASY5 Configuration:

- Probe: EX3DV4 - SN3820; ConvF(6.84, 6.84, 6.84); Calibrated: 2012-12-10
- Sensor-Surface: 2mm (Mechanical Surface Detection)
- Electronics: DAE4 Sn679; Calibrated: 2013-1-16
- Phantom: SAM1; Type: SAM; Serial: TP-1479
- Measurement SW: DASY52, Version 52.8 (4); SEMCAD X Version 14.4.5 (3634)

**Ch11/Area Scan (41x71x1):** Measurement grid:  $dx=12$ mm,  $dy=12$ mm

Maximum value of SAR (interpolated) =  $0.059$  mW/g

**Ch11/Zoom Scan (7x7x7)/Cube 0:** Measurement grid:  $dx=5$ mm,  $dy=5$ mm,  $dz=5$ mm

Reference Value =  $3.653$  V/m; Power Drift =  $-0.03$  dB

Peak SAR (extrapolated) =  $0.077$  W/kg

**SAR(1 g) =  $0.043$  mW/g; SAR(10 g) =  $0.025$  mW/g**

Maximum value of SAR (measured) =  $0.059$  mW/g

