



Appendix B: SAR Measurement results Plots

Plot	Frequency/Mode	Testing Position& Channel	Test Date
1	GSM 850	Right Cheek, Middle	2018-08-28
2	GPRS 850	Body Back, Middle	2018-08-28
3	GSM 1900	Right Cheek, Middle	2018-08-29
4	GPRS 1900	Body Back, Middle	2018-08-29

Plot 1: GSM 850 Right Cheek, Middle

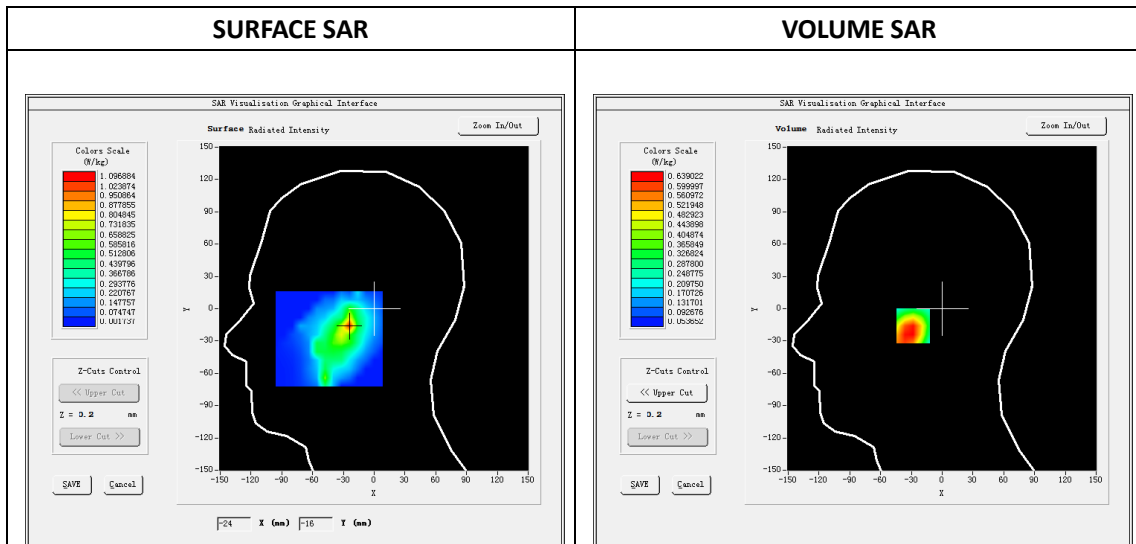
Type: Phone measurement
 Date of measurement: 08/28/2018
 Measurement duration: 22 minutes 22 seconds
 Mobile Phone IMEI number: --

A. Experimental conditions.

Area Scan	dx=8mm dy=8mm
ZoomScan	5x5x7,dx=8mm dy=8mm dz=5mm
Phantom	Validation plane
Device Position	Right Cheek
Band	GSM850
Channels	Middle
Signal	GSM (Duty cycle: 1:8.3)

B. SAR Measurement Results

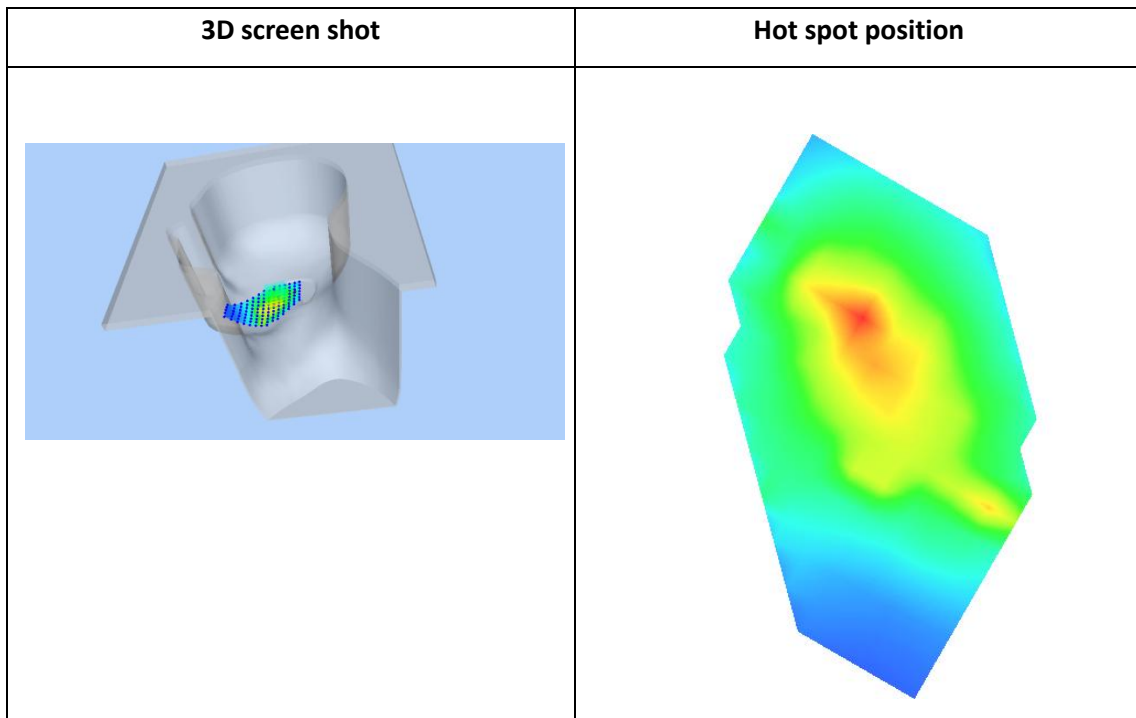
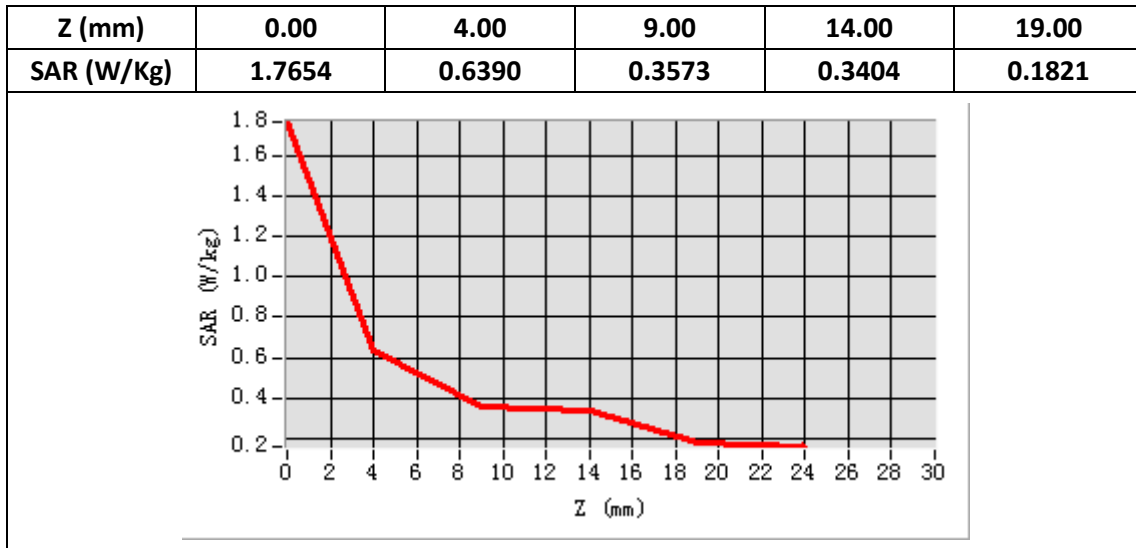
E-Field Probe	SATIMO SN_43/15_EP276
Frequency (MHz)	836.6
Relative permittivity (real part)	41.61
Relative permittivity (imaginary part)	19.35
Conductivity (S/m)	0.89
Variation (%)	-0.68
ConvF:	4.99



Maximum location: X=-24.00, Y=-16.00

SAR Peak: 0.83 W/kg

SAR 10g (W/Kg)	0.414864
SAR 1g (W/Kg)	0.633423



Plot 2:GPRS 850 , Back, Middle,15mm

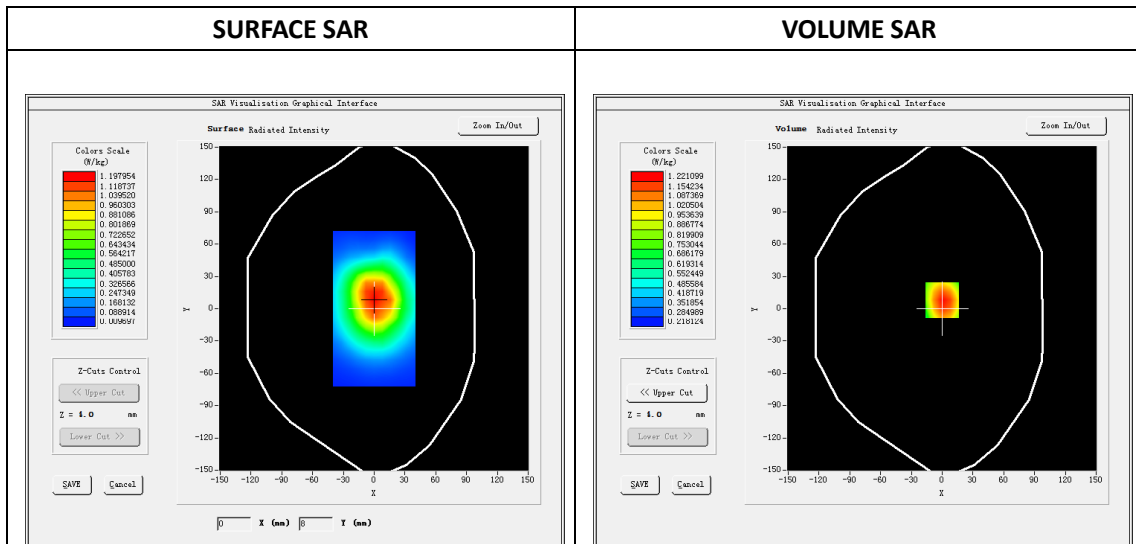
Type: Phone measurement
 Date of measurement: 08/28/2018
 Measurement duration: 22 minutes 21 seconds
 Mobile Phone IMEI number: --

A. Experimental conditions.

Area Scan	dx=8mm dy=8mm
ZoomScan	5x5x7,dx=8mm dy=8mm dz=5mm
Phantom	Validation plane
Device Position	Back
Band	GPRS 850_4Tx
Channels	Middle
Signal	GPRS (Duty cycle: 1:2.08)

B. SAR Measurement Results

E-Field Probe	SATIMO SN_43/15_EP276
Frequency (MHz)	836.6
Relative permittivity (real part)	55.35
Relative permittivity (imaginary part)	20.35
Conductivity (S/m)	0.91
Variation (%)	0.90
ConvF:	5.18

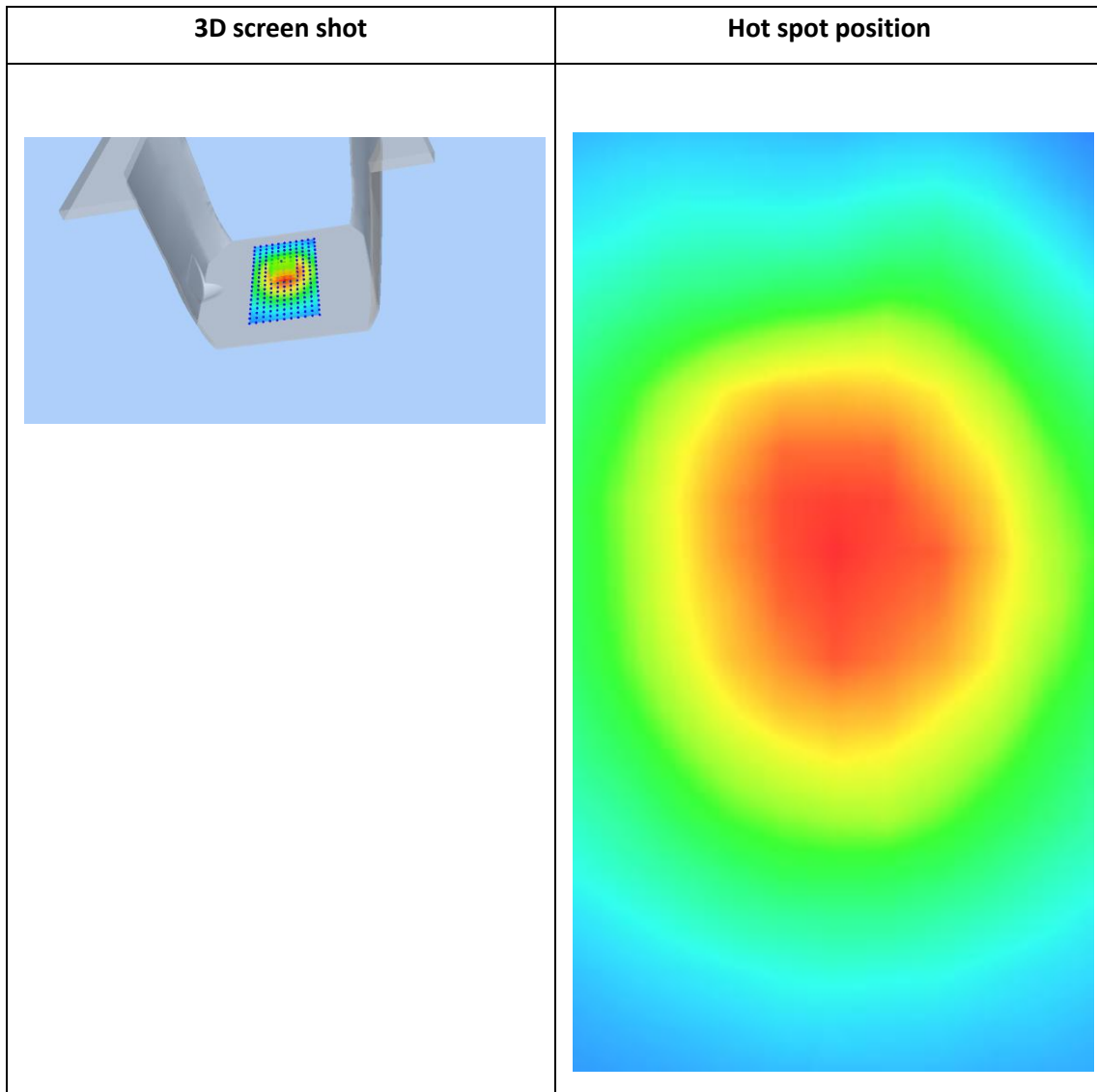
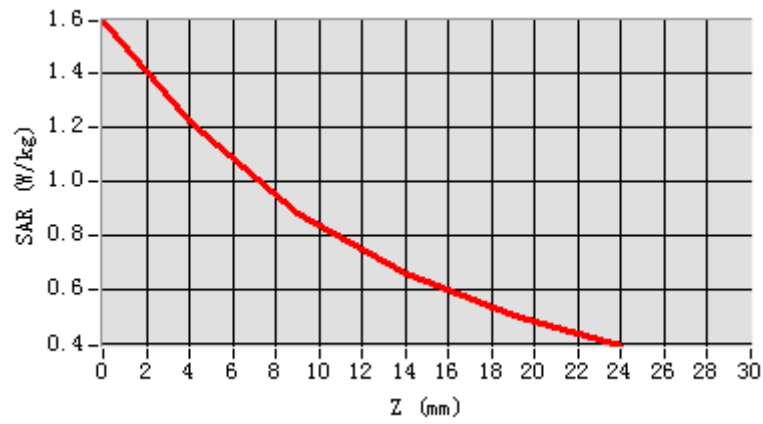


Maximum location: X=0.00, Y=8.00

SAR Peak: 1.60 W/kg

SAR 10g (W/Kg)	0.813478
SAR 1g (W/Kg)	1.177879

Z (mm)	0.00	4.00	9.00	14.00	19.00
SAR (W/Kg)	1.5944	1.2211	0.8822	0.6546	0.5034



Plot 3:GSM1900 Right Cheek, Middle

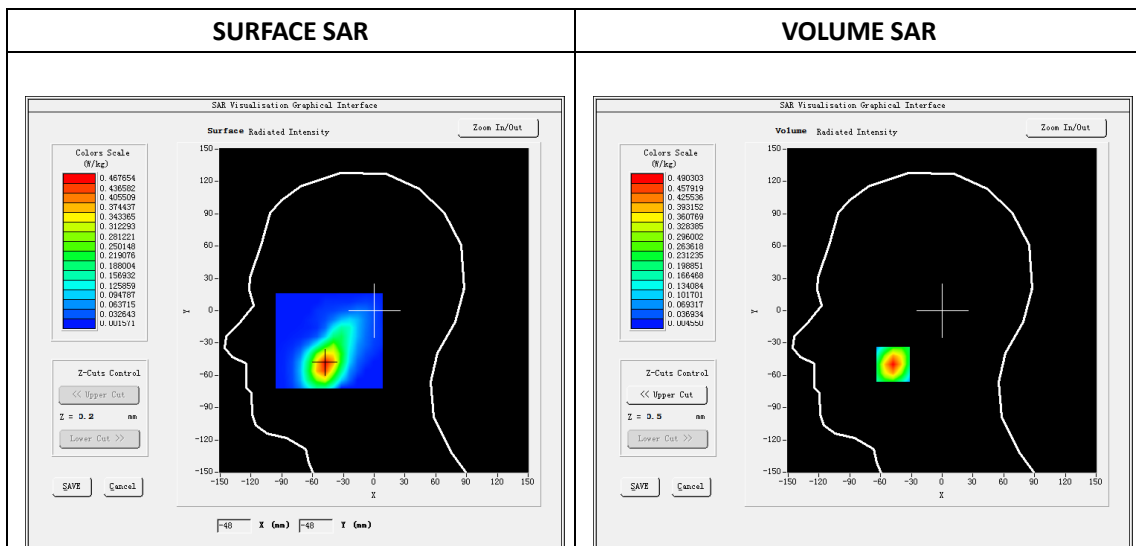
Type: Phone measurement
 Date of measurement: 08/29/2018
 Measurement duration: 22 minutes 26 seconds
 Mobile Phone IMEI number: --

A. Experimental conditions.

Area Scan	dx=8mm dy=8mm
ZoomScan	5x5x7,dx=8mm dy=8mm dz=5mm
Phantom	Validation plane
Device Position	Right Cheek
Band	GSM
Channels	1900
Signal	GSM(Duty cycle: 1:8.3)

B. SAR Measurement Results

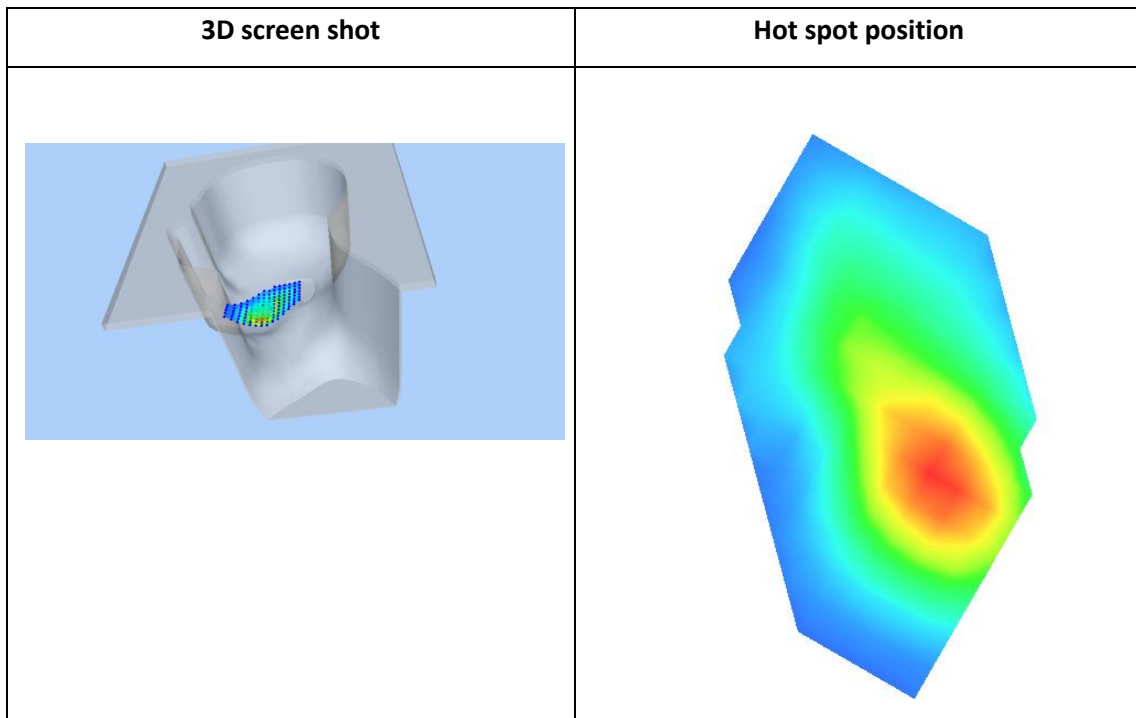
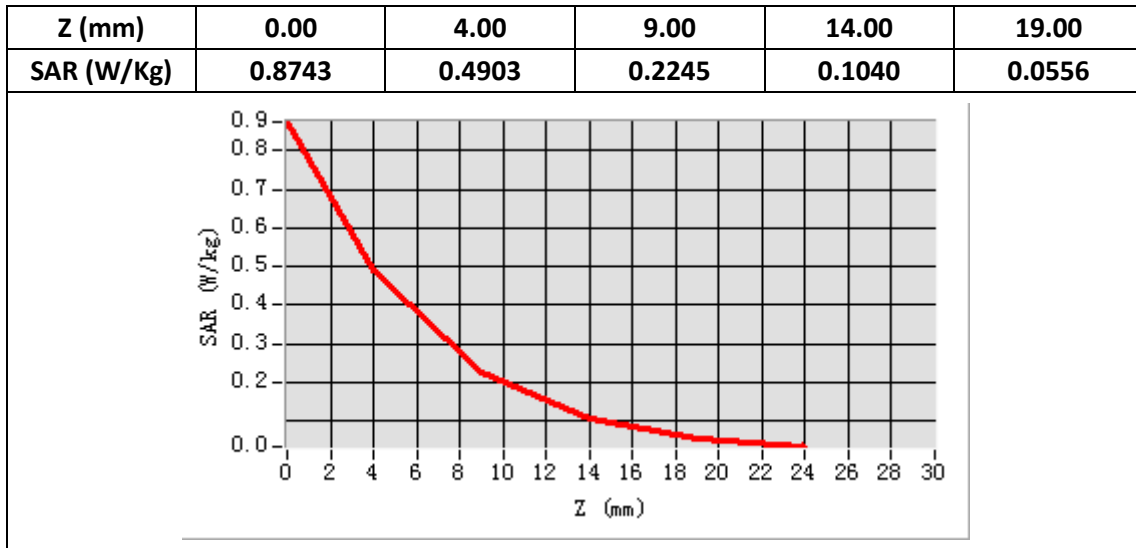
E-Field Probe	SATIMO SN_43/15_EP276
Frequency (MHz)	1880
Relative permittivity (real part)	41.15
Relative permittivity (imaginary part)	12.68
Conductivity (S/m)	1.38
Variation (%)	2.12
ConvF:	4.73



Maximum location: X=-48.00, Y=-50.00

SAR Peak: 0.87 W/kg

SAR 10g (W/Kg)	0.216118
SAR 1g (W/Kg)	0.455836



Plot 4:GPRS 1900 , Back Middle,15mm

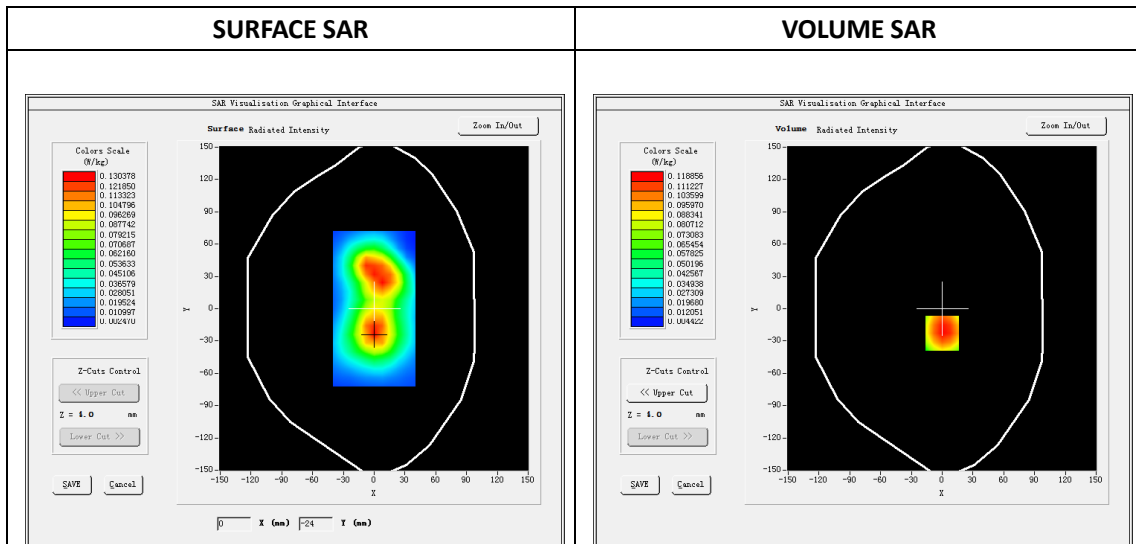
Type: Phone measurement
 Date of measurement: 08/29/2018
 Measurement duration: 22 minutes 24 seconds
 Mobile Phone IMEI number: --

A. Experimental conditions.

Area Scan	dx=8mm dy=8mm
ZoomScan	5x5x7,dx=8mm dy=8mm dz=5mm
Phantom	Validation plane
Device Position	Back
Band	GPRS_4Tx
Channels	Middle
Signal	GPRS (Duty cycle: 1:2.08)

B. SAR Measurement Results

E-Field Probe	SATIMO SN_43/15_EP276
Frequency (MHz)	1880
Relative permittivity (real part)	53.94
Relative permittivity (imaginary part)	14.15
Conductivity (S/m)	1.53
Variation (%)	0.16
ConvF:	4.83

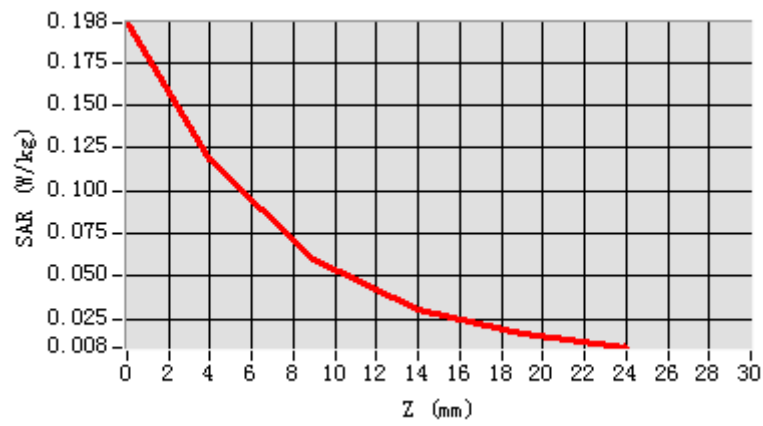


Maximum location: X=0.00, Y=-23.00

SAR Peak: 0.20 W/kg

SAR 10g (W/Kg)	0.062754
SAR 1g (W/Kg)	0.114402

Z (mm)	0.00	4.00	9.00	14.00	19.00
SAR (W/Kg)	0.1981	0.1189	0.0601	0.0302	0.0161



3D screen shot	Hot spot position
