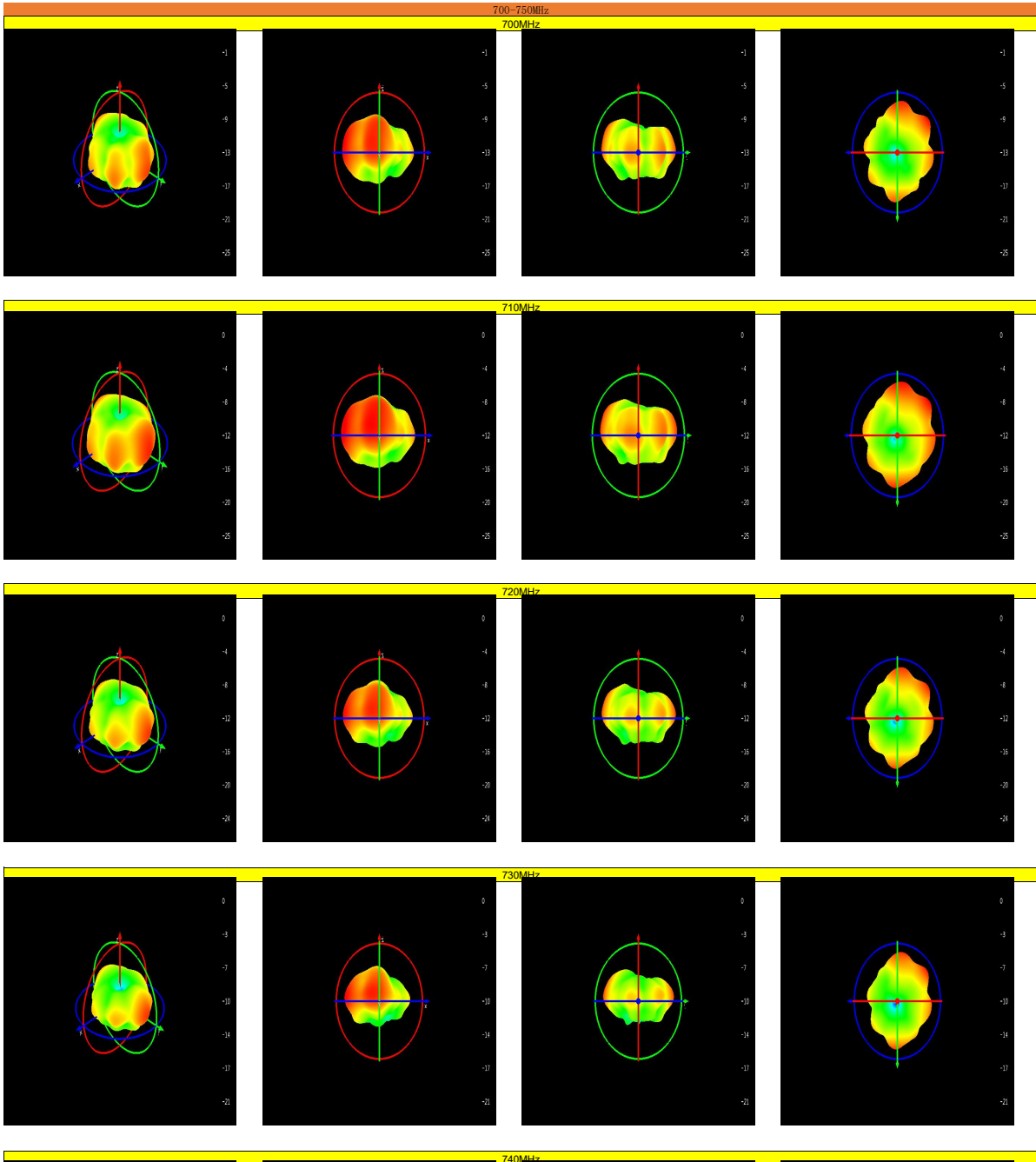


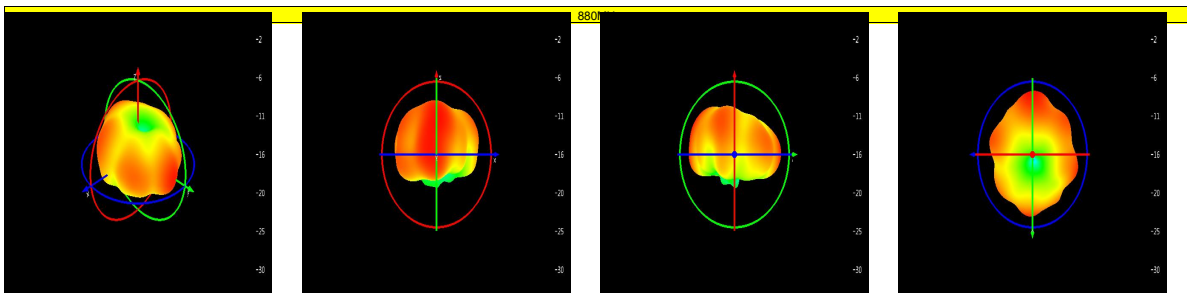
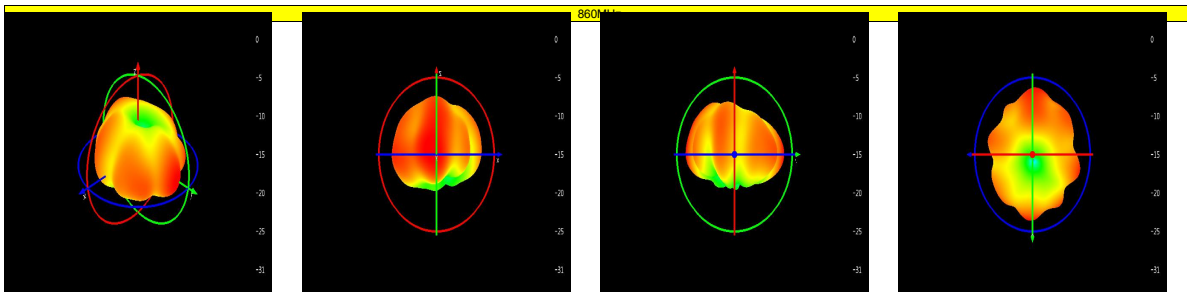
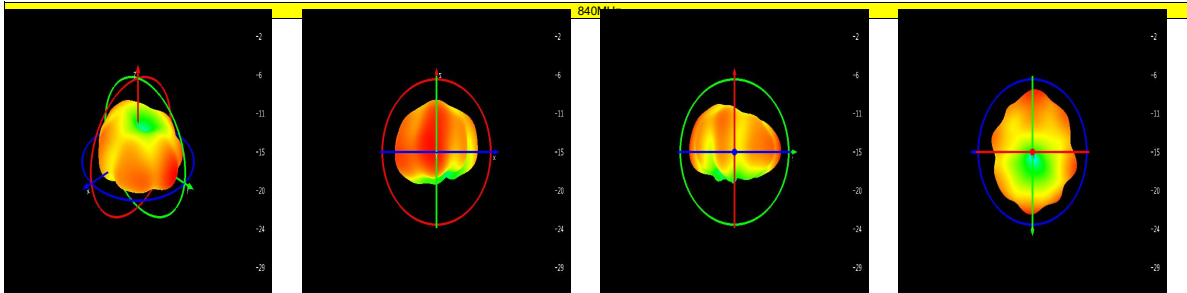
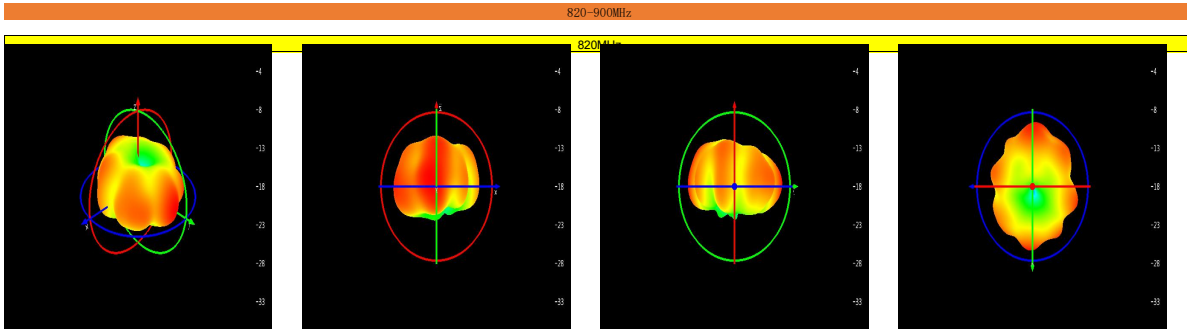
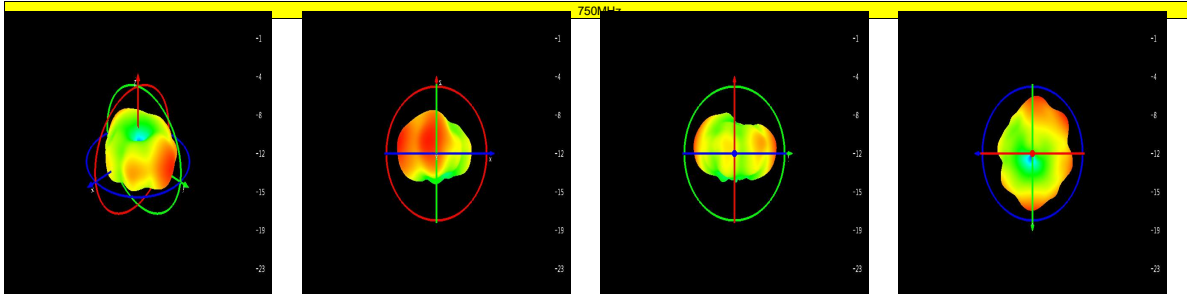
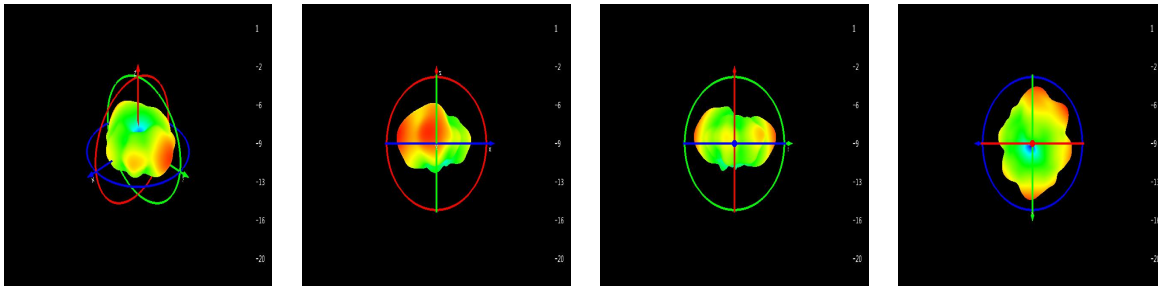
主天线无源			
frequency	gain	efficien	efficien
频率 (MHz)	增益 (dBi)	效率 (dB)	效率 (%)
700	-3.56	-7.38	18.27
710	-2.2	-6.03	24.94
720	-2.2	-6.07	24.71
730	-2.2	-6.26	23.64
740	-2.2	-5.48	28.29
750	-3.56	-6.57	22.03

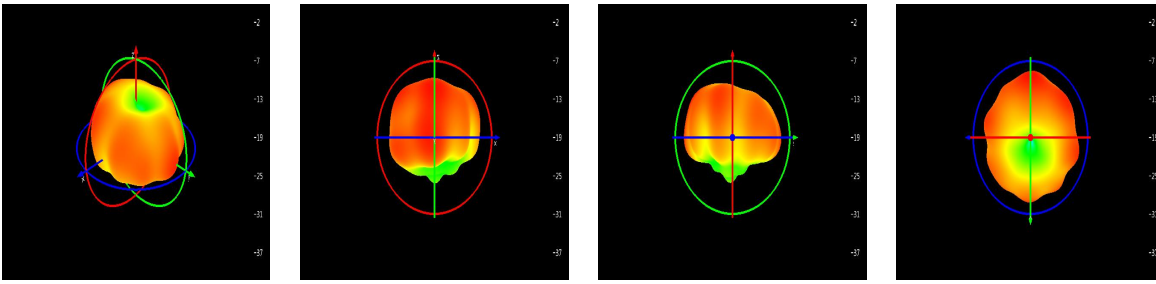
820	-1.73	-9.28	11.79
840	-1.73	-7.21	18.99
860	-2.8	-6.5	22.37
880	-2.8	-7.21	19.02
900	-1.16	-6.91	20.39

880	-3.97	-8.93	12.79
890	-4.42	-9.59	10.99
900	-3.84	-8.77	13.27
910	-3.54	-8.3	14.77
920	-4.18	-9	12.58
930	-2.69	-8.49	14.15
940	-3.05	-8.52	14.07
950	-2.95	-8.57	13.89
960	-2.79	-8.79	13.2
1700	1.12	-9.23	11.94
1800	0.89	-7.91	16.17
1900	1.8	-7.11	19.46
2000	0.89	-7.07	19.64
2100	0.26	-5.04	31.32
2300	-0.94	-3.91	40.67
2400	-0.94	-4.41	36.22
2500	-1.25	-4.91	32.31
2600	-0.17	-5.65	27.21
2700	-0.11	-5.41	28.76

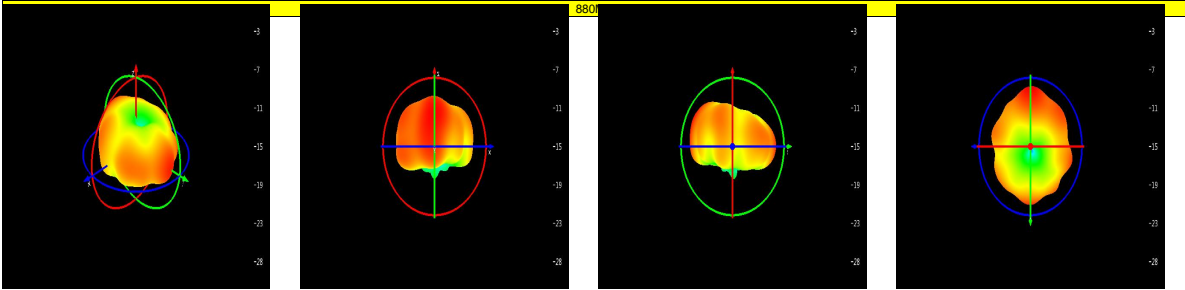
箭头向下延伸



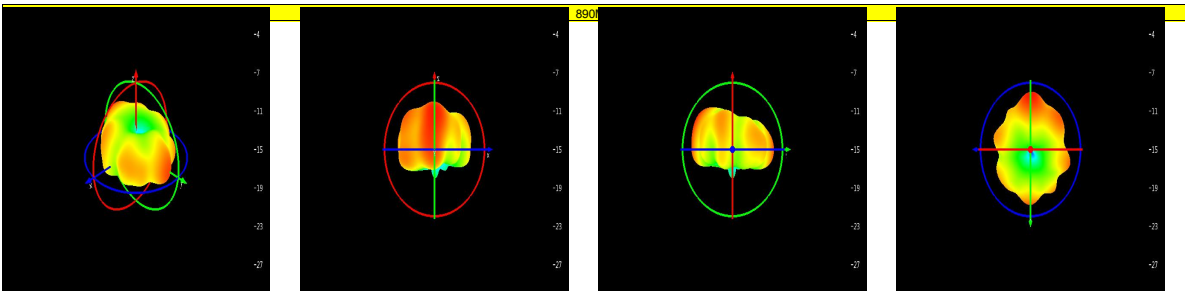




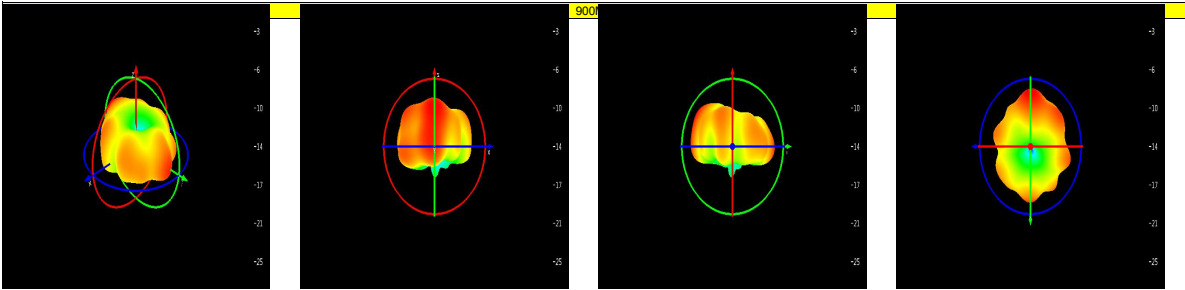
880-2700MHz



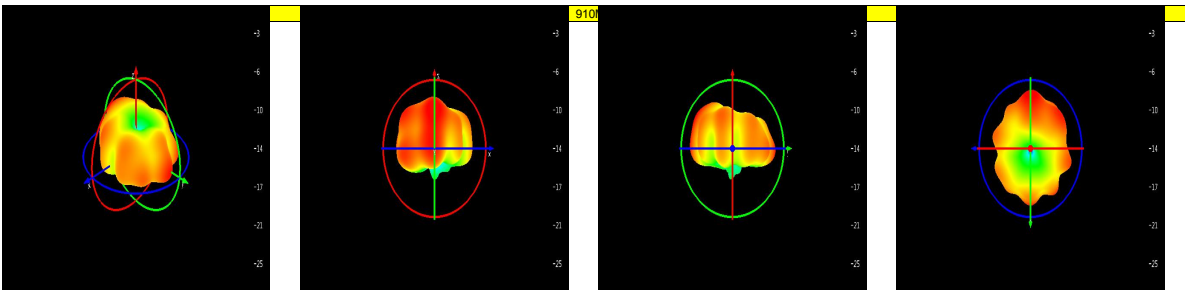
880



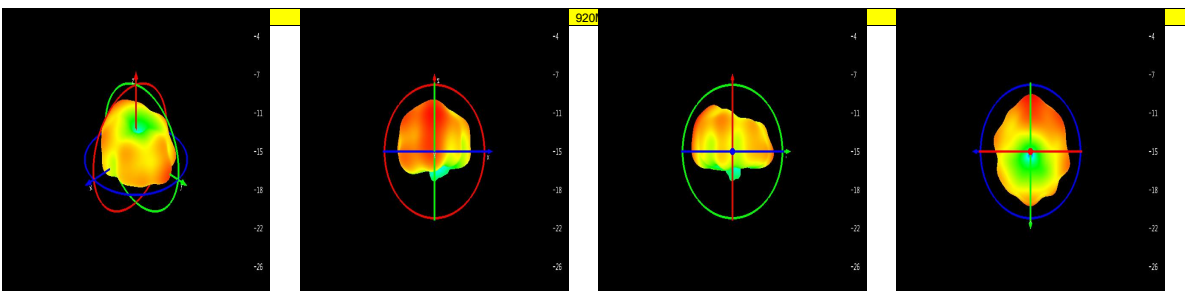
890



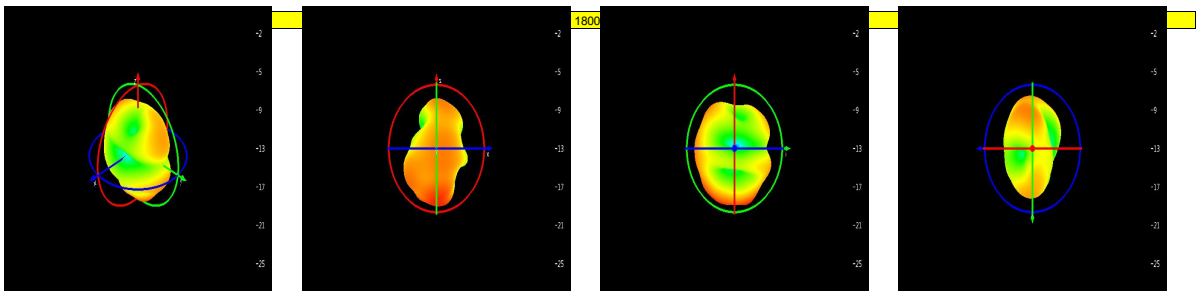
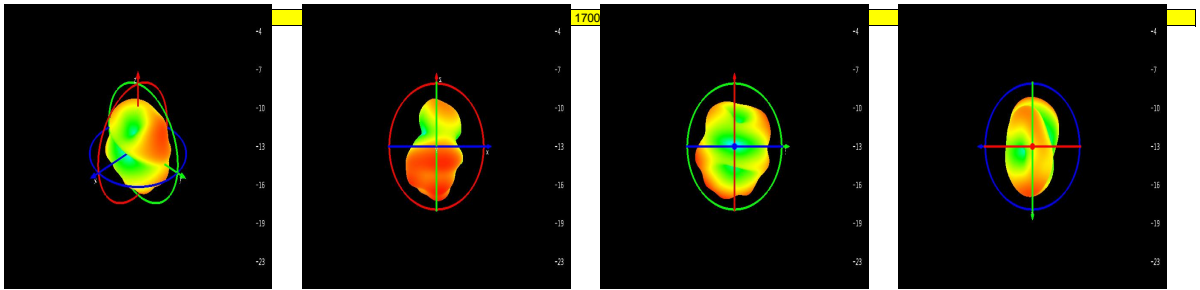
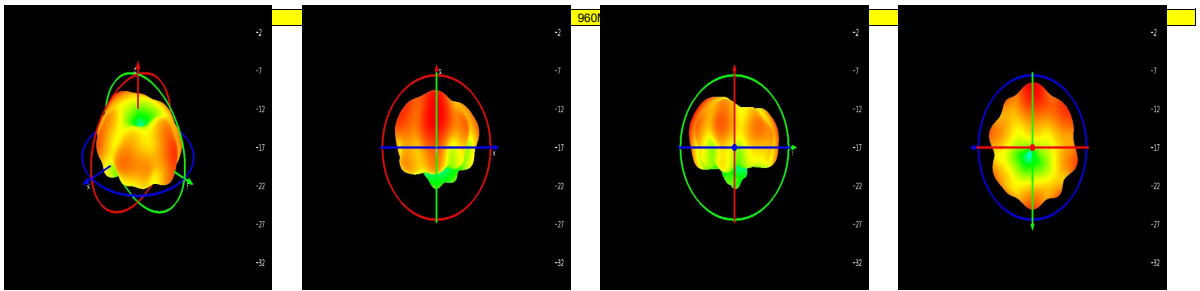
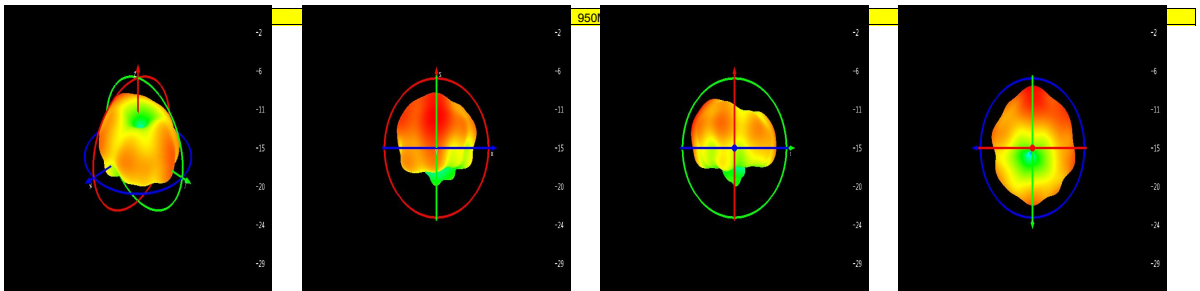
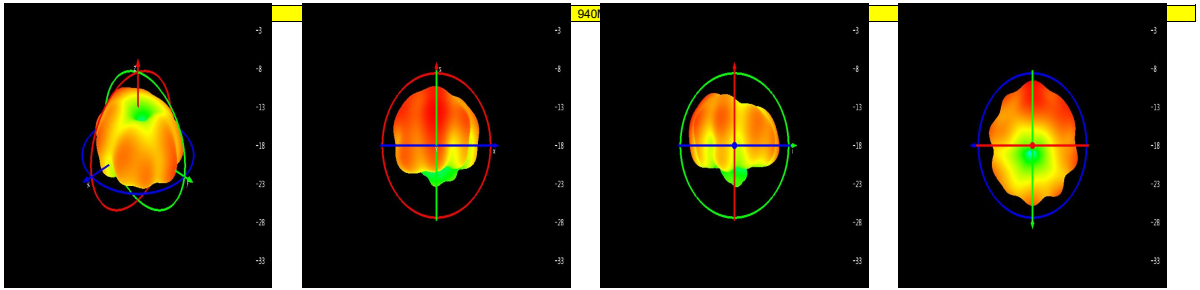
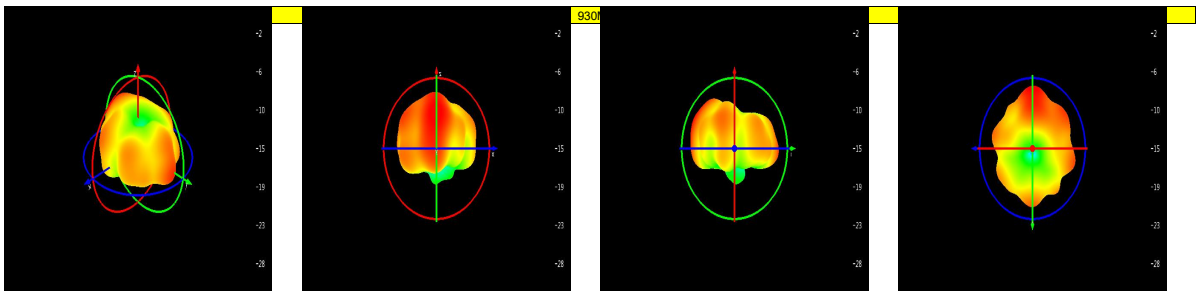
900

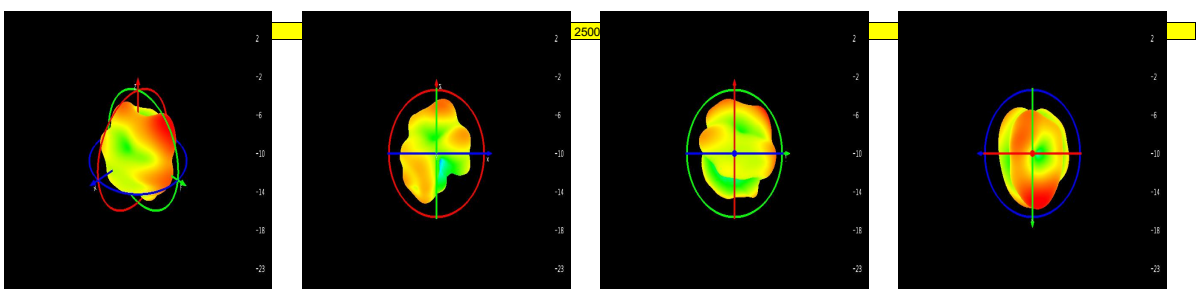
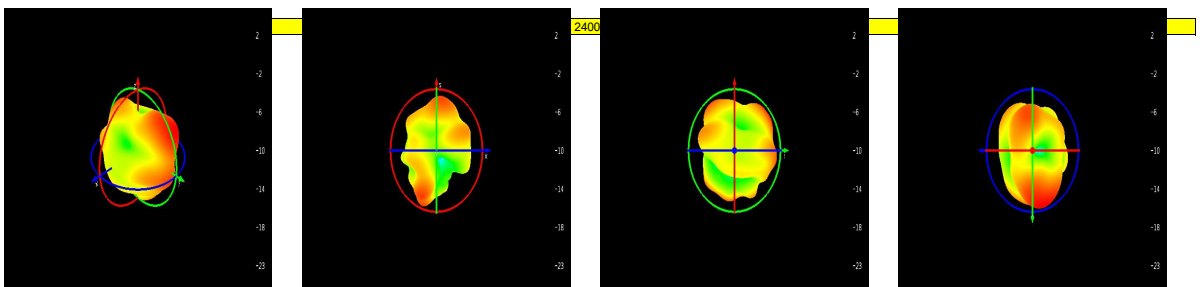
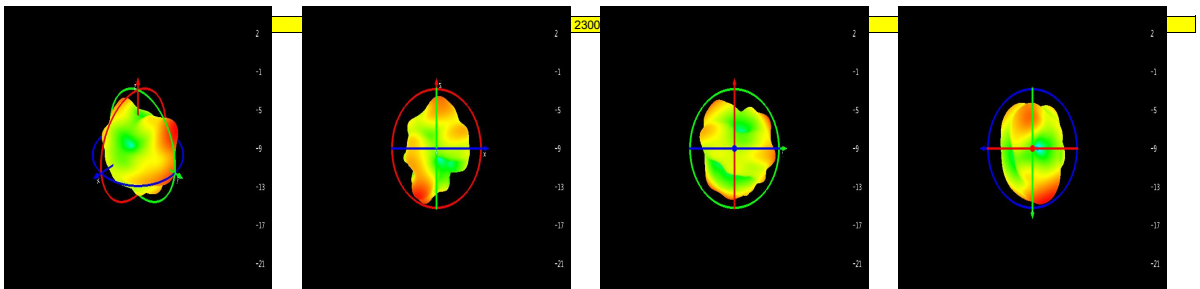
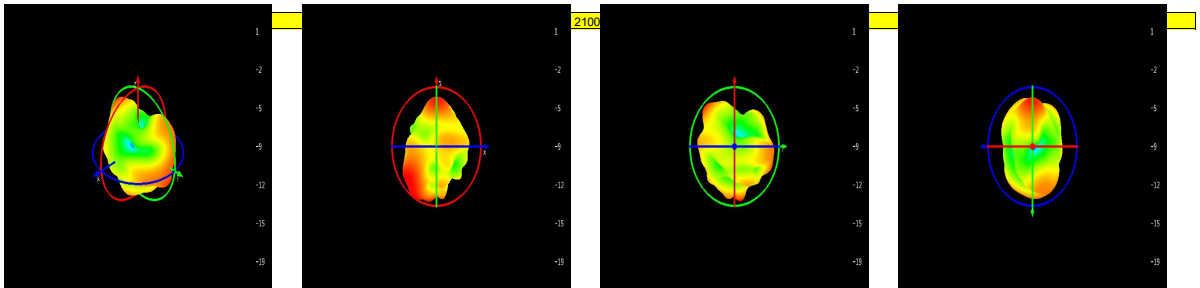
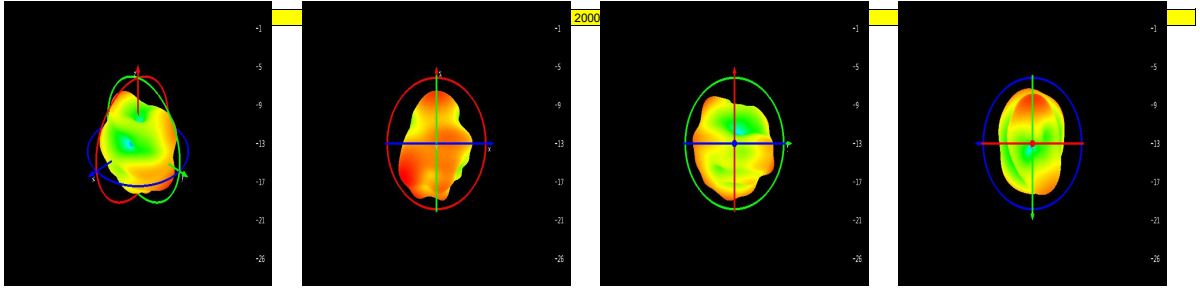
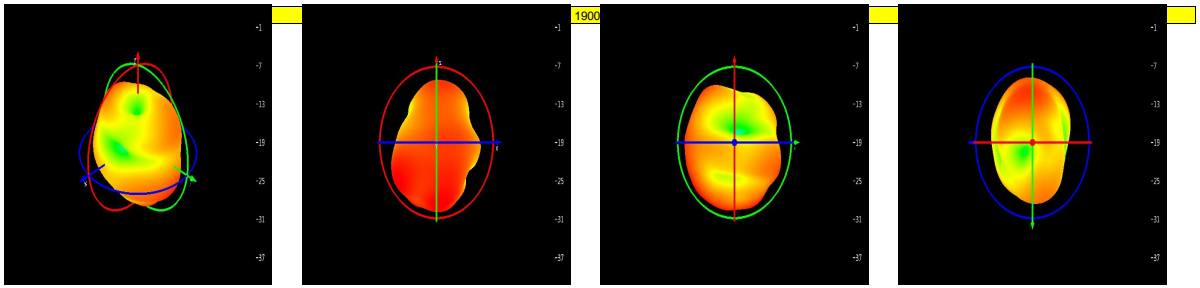


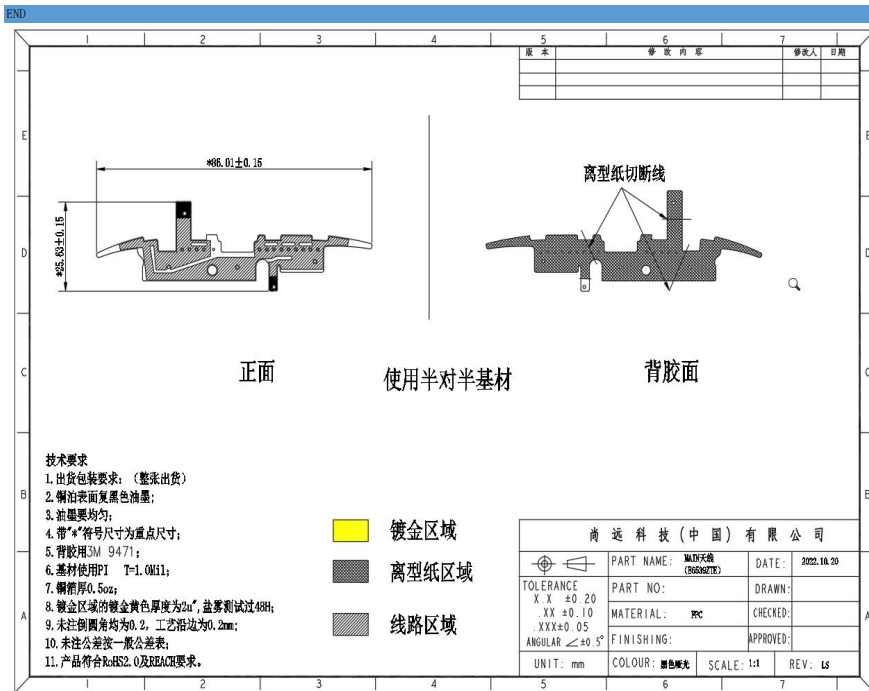
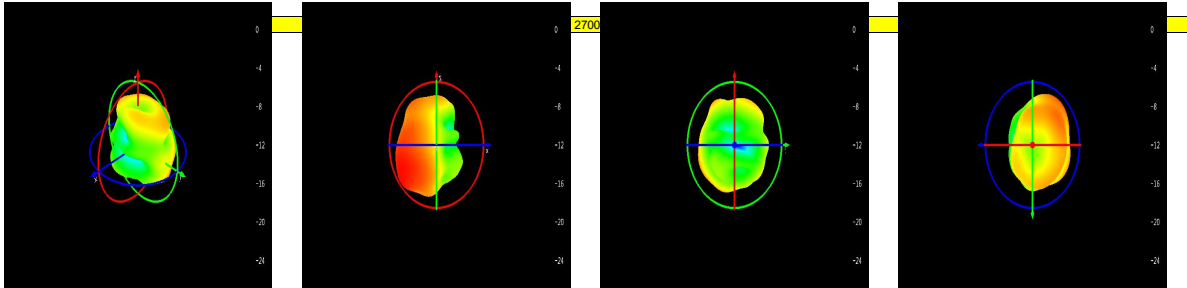
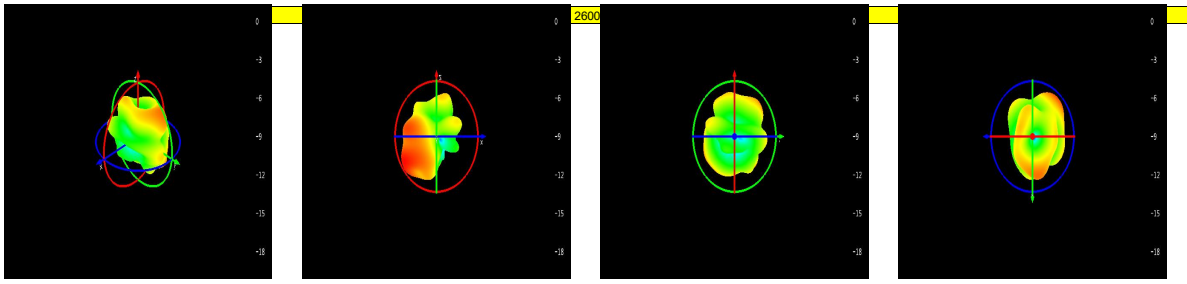
910



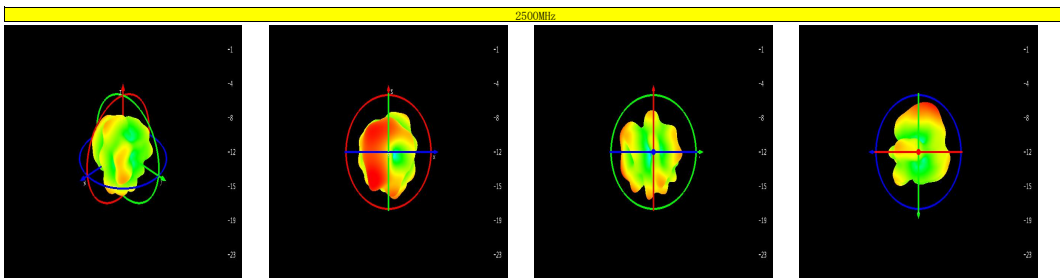
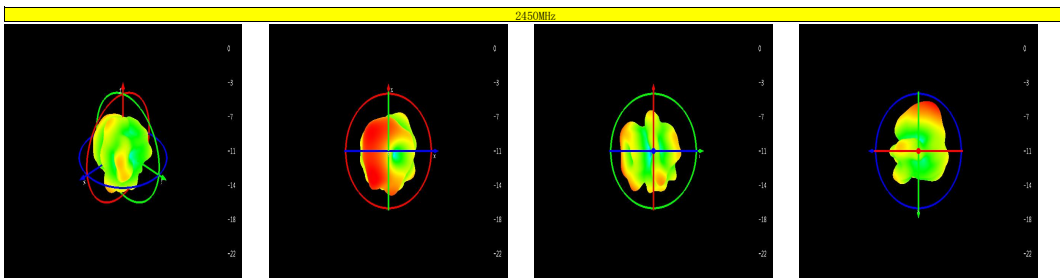
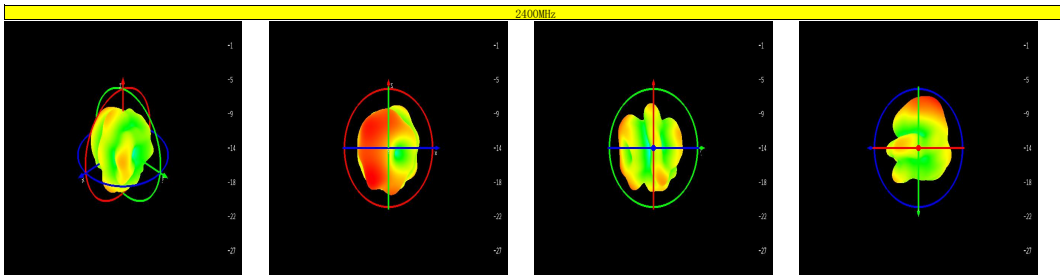
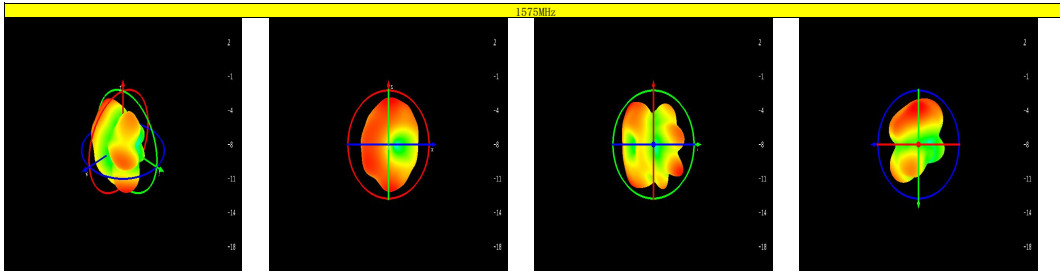
920







三合一天线无源:			
Frequency 频率 (MHz)	gain 增益 (dBi)	efficien 效率(dB)	efficien 效率(%)
1575	1.14	-4.16	38.41
2400	-0.06	-8.41	14.41
2450	-0.06	-7.25	18.84
2500	-0.06	-8.11	15.46



No.	Change Content	Change Person	Date

正面

使用半对半材质

高型纸切断线

背面

技术要求:

- 出货包装要求: (整张出货)
- 铜箔表面复黑色油墨
- 油墨要均匀;
- 带*号尺寸为重点尺寸;
- 基材用SM 9471;
- 基材用PI T-1.0W11;
- 铜箔厚0.5oz;
- 镀金区域的镀金厚度为2μ, 盐雾测试过48h;
- 未注圆角均为0.2, 工艺裕量为0.2mm;
- 未经公差表一般公差表;
- 产品符合RoHS2.0及reach要求。

镀金区域

高型纸区域

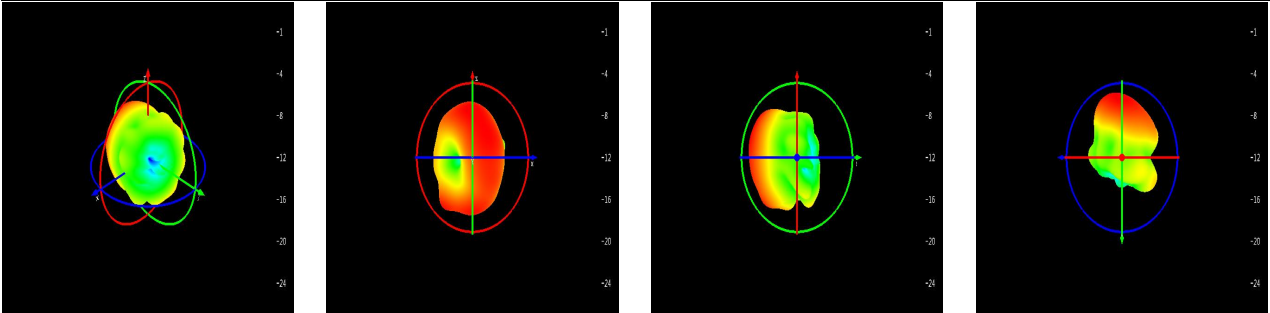
线路区域

商远科技(中国)有限公司			
TOLERANCE X.X ±0.20 .XX ±0.10 X.X ±0.05 ANGULAR ≤±0.5°	PART NAME: 3315线 (S2226033)	DATE: 2022.10.30	DRAWN:
	PART NO: S222603370-2	CHECKED:	
	MATERIAL: PFC	APPROVED:	
	FINISHING:		
UNIT: mm	COLOUR: 黑色高光	SCALE: 1:1	REV: 01A

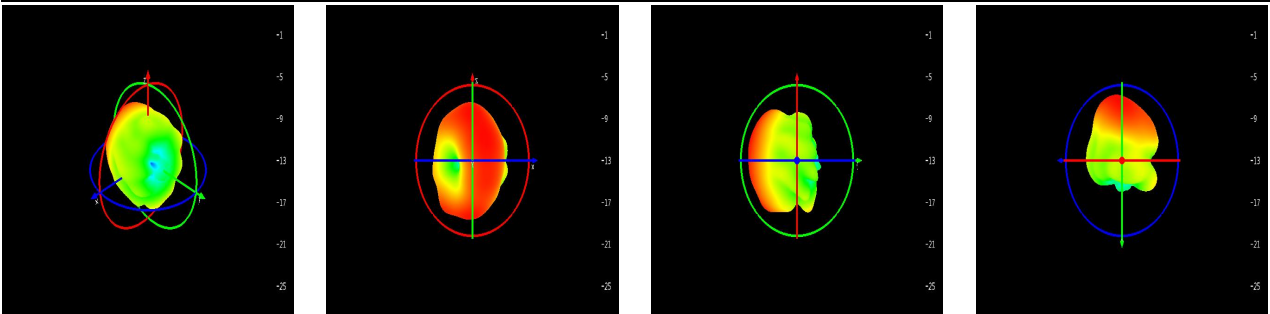
分集天线无源:

Freque	gain	efficien	efficien
频率 (MHz)	增益 (dB)	效率 (dB)	效率 (%)
1800	-1.85	-8.26	14.92
1850	-1.19	-7.44	18.04
1900	0.74	-5.85	26
1950	1.45	-4.63	34.42
2000	1.28	-4.36	36.63
2050	1.27	-4.61	34.58
2100	0.88	-5.37	29.03
2150	-0.76	-6.54	22.2
2200	-2.52	-8.11	15.44
2250	-4.74	-9.91	10.21
2300	-6.26	-10.71	8.49
2350	-8.28	-11.51	7.06
2400	-7.82	-12.08	6.19
2450	-6.56	-11.98	6.33
2500	-5.44	-11.28	7.45
2550	-3.81	-10.06	9.85
2600	-2.33	-8.79	13.22
2650	-1.17	-7.42	18.11
2700	-2.09	-7.61	17.35

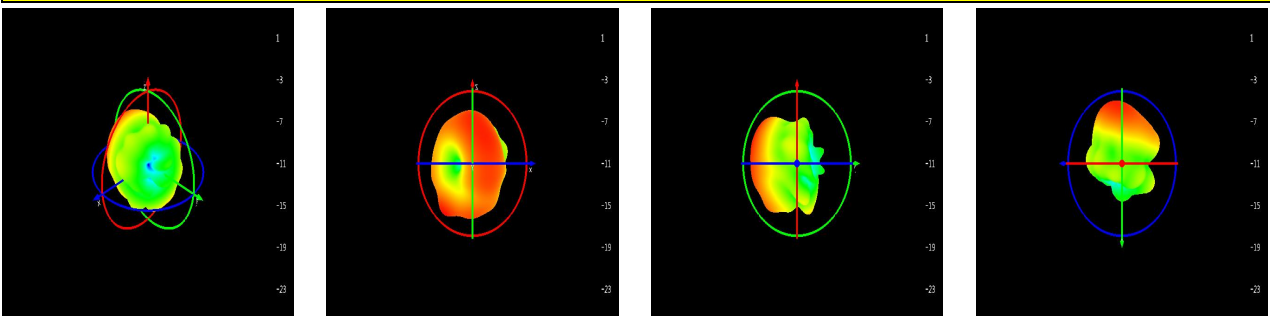
1800MHz



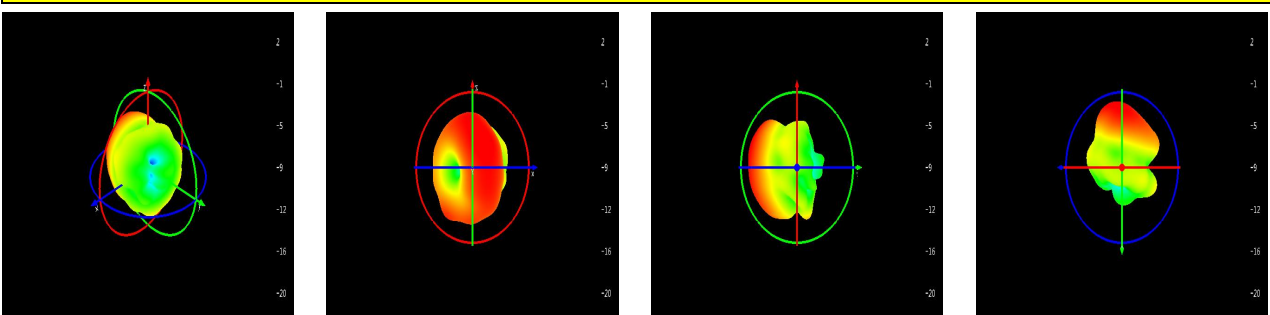
1850MHz



1900MHz

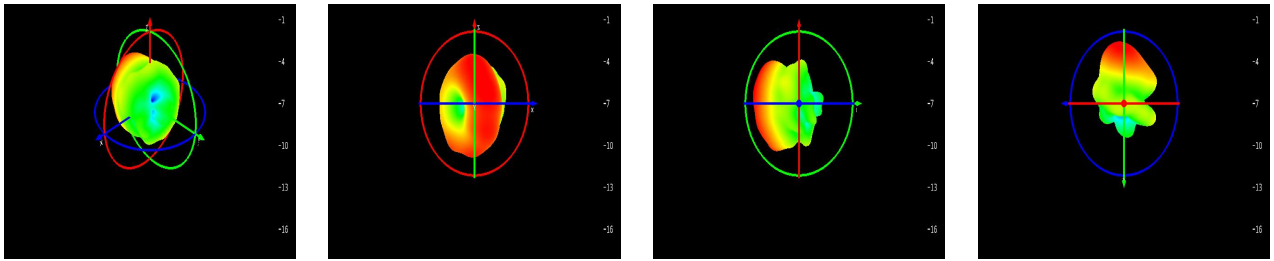


1950MHz

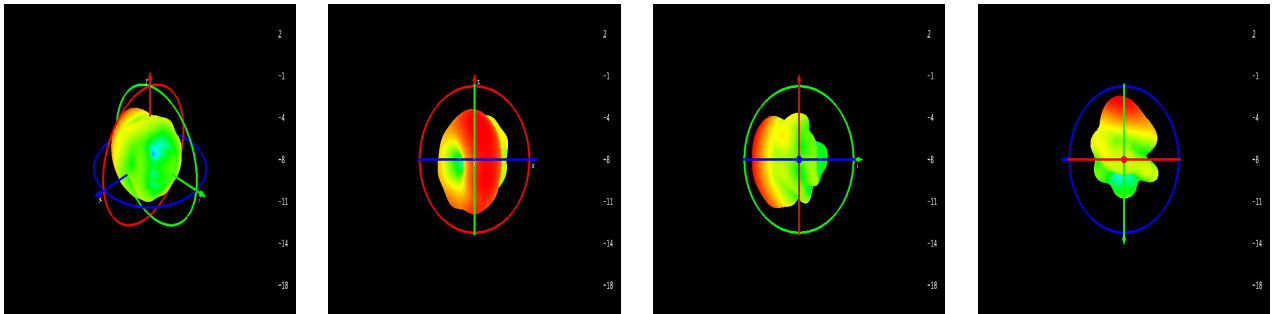


2000MHz

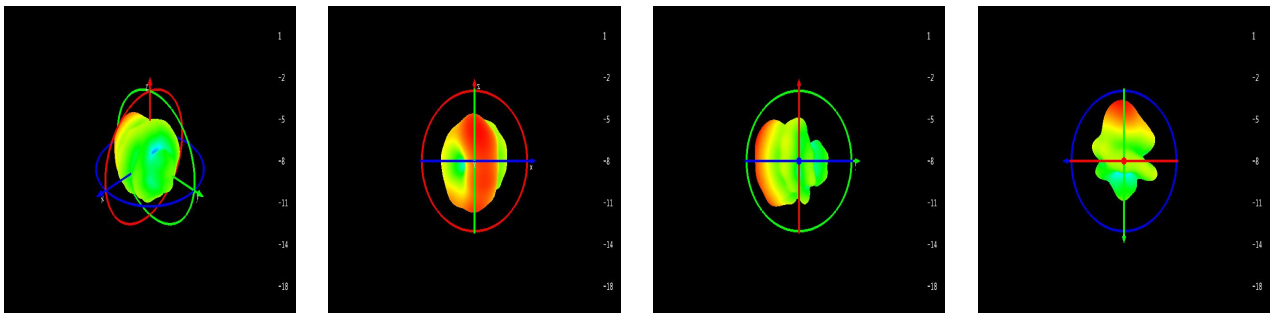




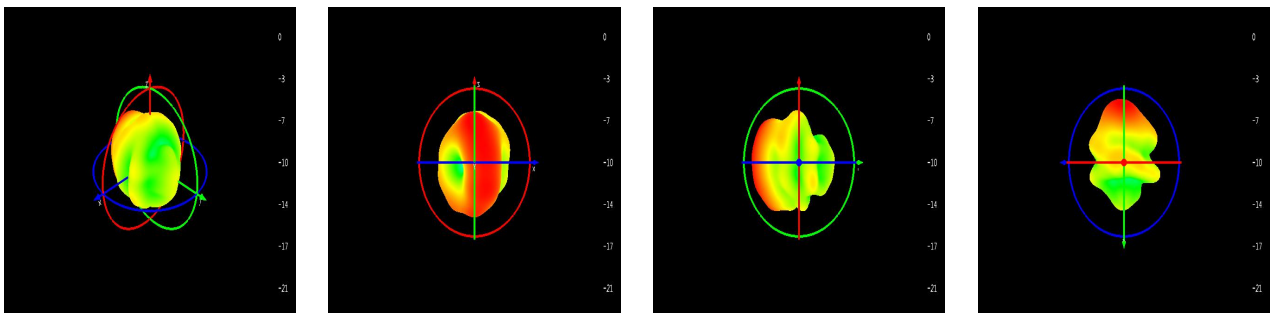
2050MHz



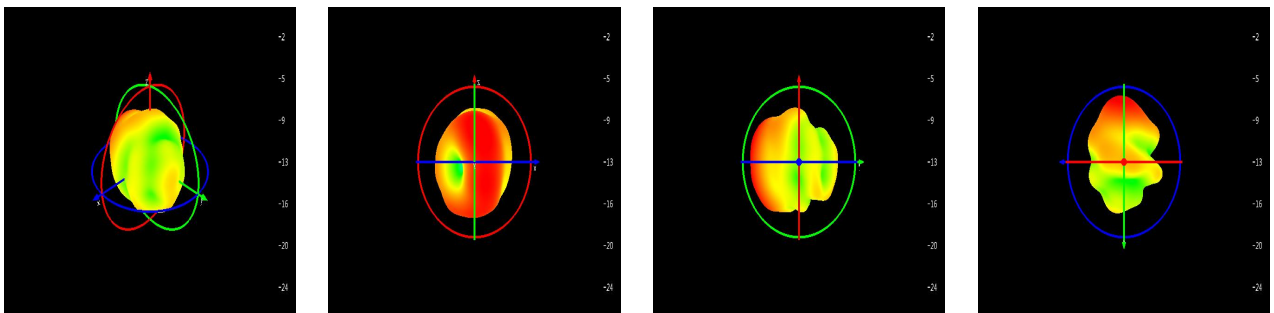
2100MHz



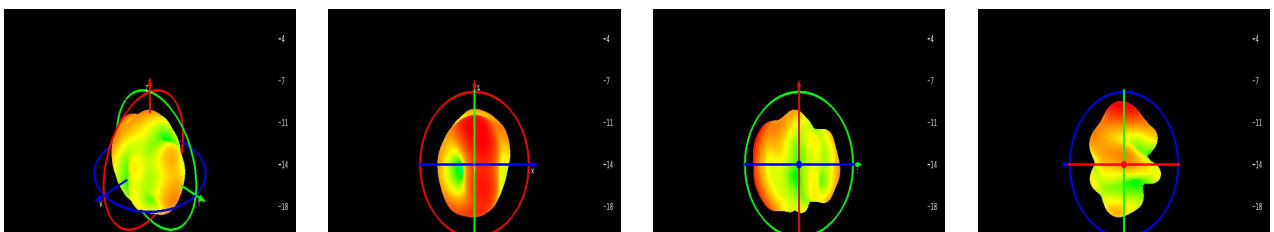
2150MHz

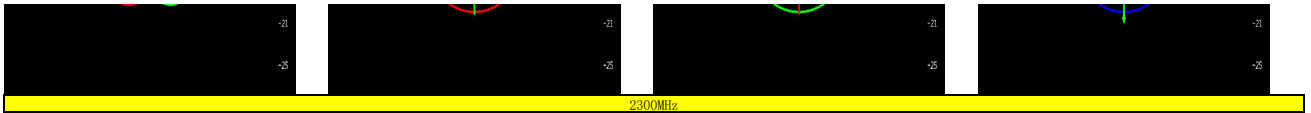


2200MHz

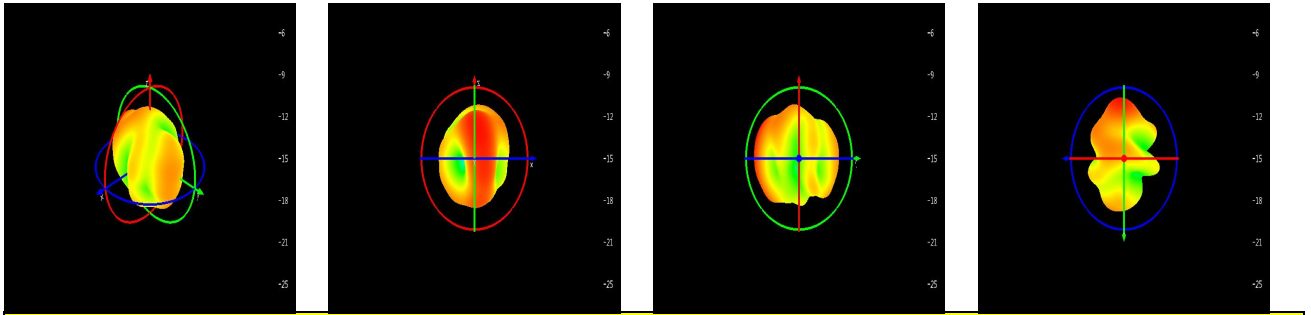


2250MHz

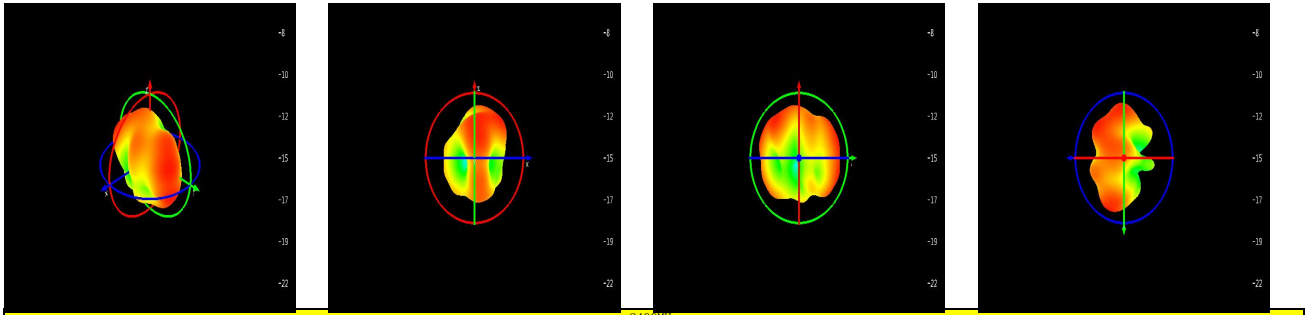




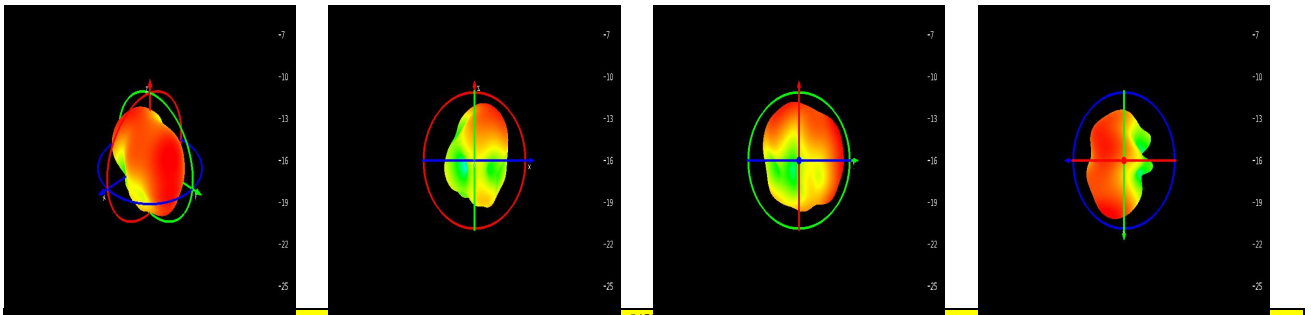
2300MHz



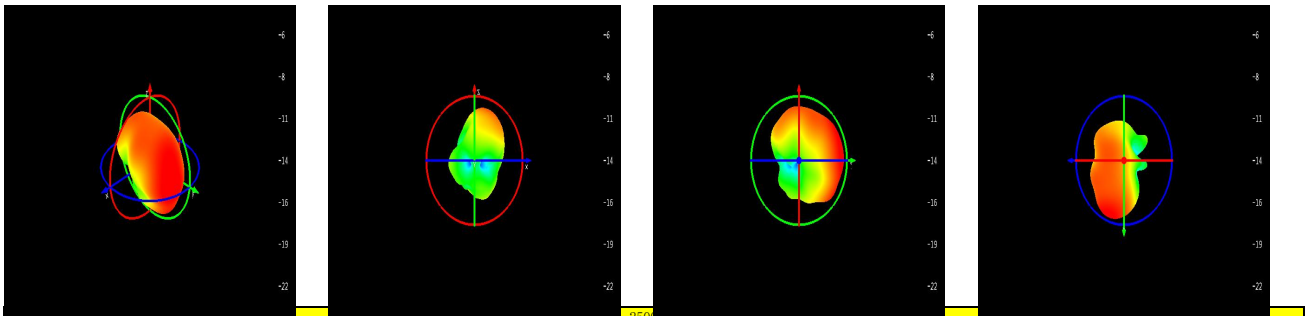
2350MHz



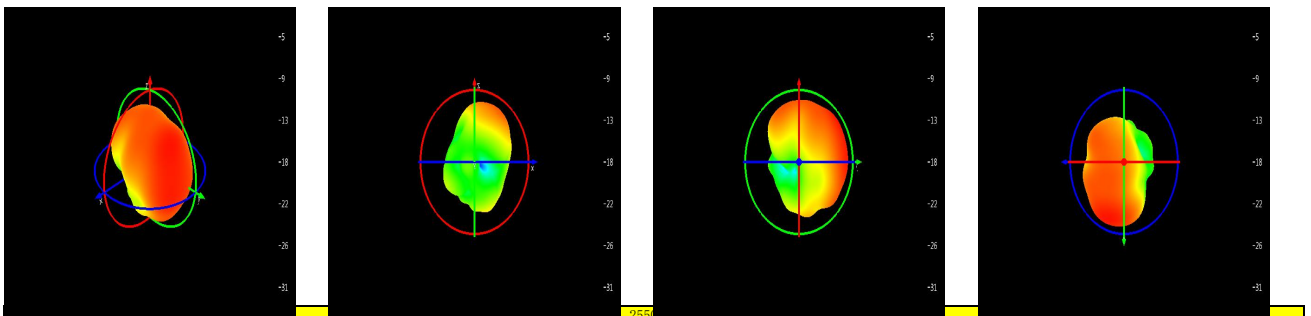
2400MHz



2450MHz

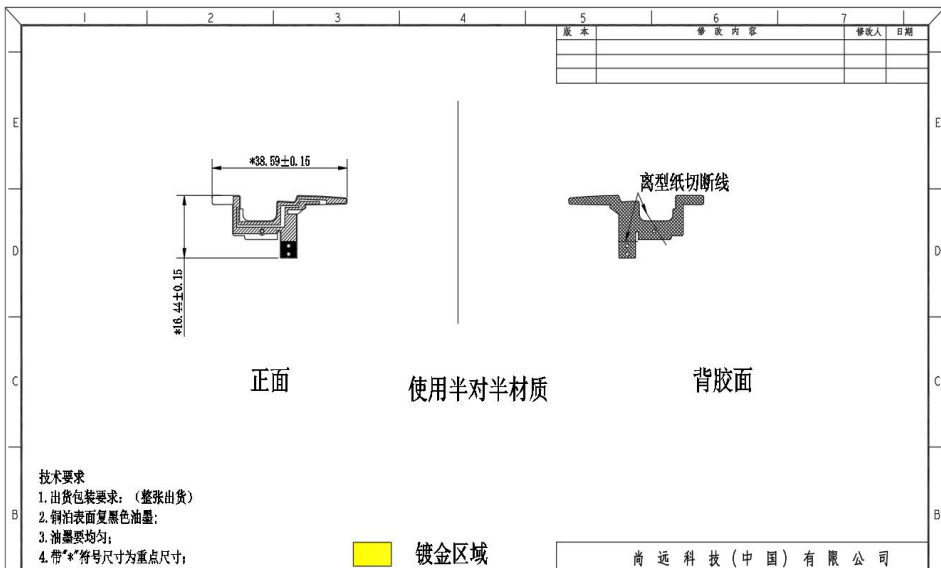
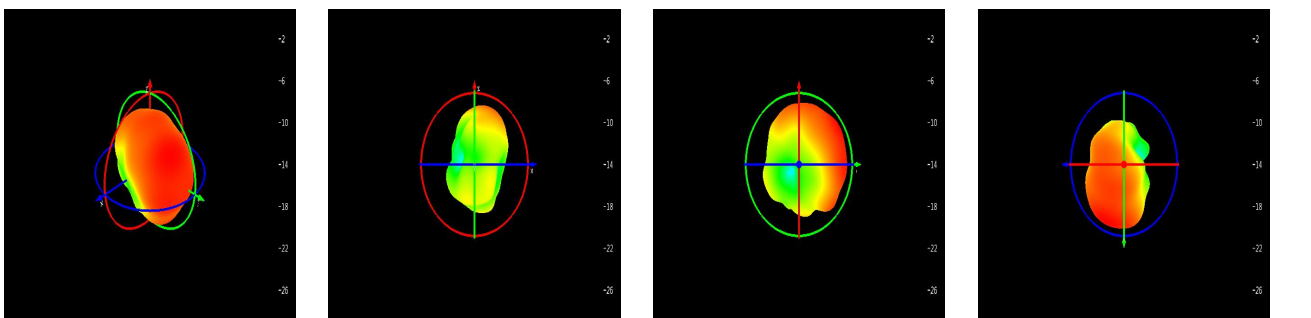
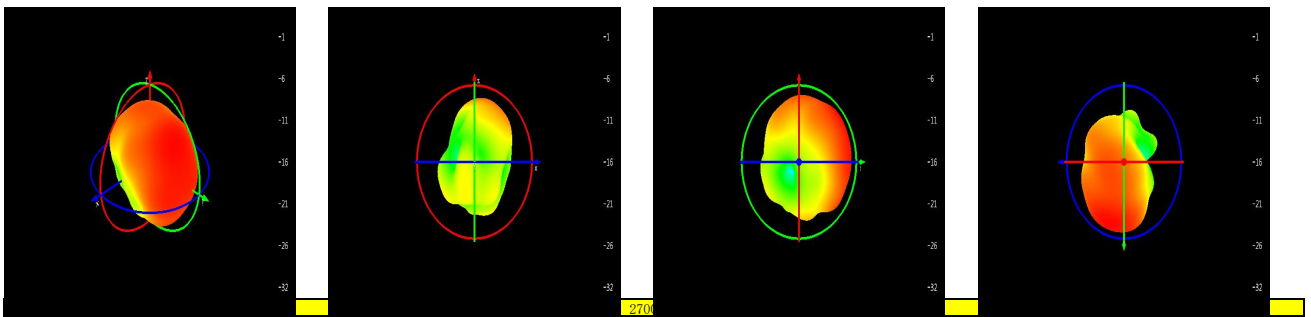
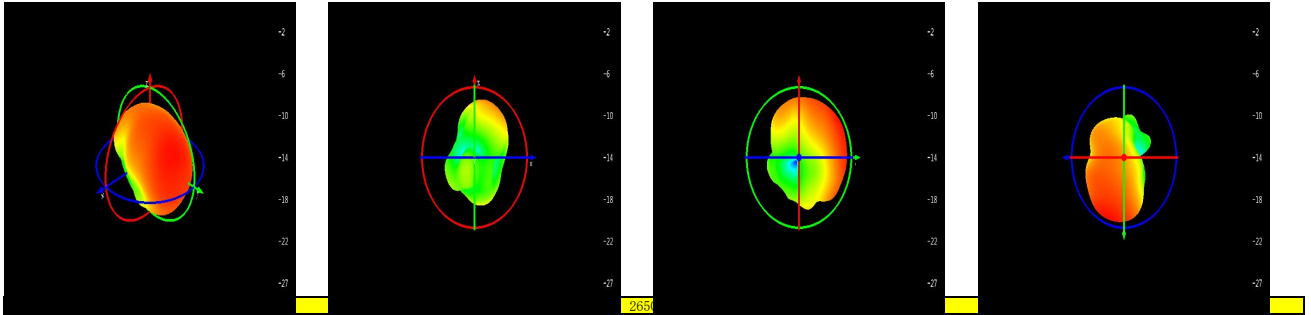
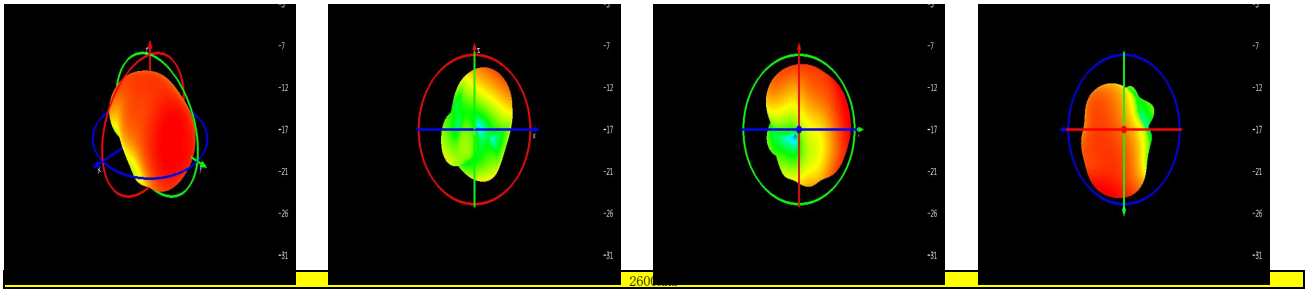


2500MHz



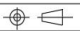
2550MHz





5. 宵腔用3M 9471;
6. 基材使用PI T=1.0Mil;
7. 铜箔厚0.5oz;
8. 镀金区域的镀金黄色厚度为2μ, 盐雾测试过48H;
9. 未注圆角均为0.2, 工艺滑边为0.2mm;
10. 未注公差按一般公差表;

-  离型纸区域
-  线路区域

 TOLERANCE .XX +0.20 .XX +0.10 .XXX+0.05 ANGULAR \angle +0.5°	PART NAME: DIT天通 (8863821E)	DATE: 2022.10.28
	PART NO:	DRAWN:
	MATERIAL: FPC	CHECKED: 杨康
	FINISHING:	APPROVED: