

Appendix B: SAR Measurement results Plots

Plot	Frequency/Mode	Testing Position and Channel	Test Date
1	GSM850	Right Cheek Middle	2020/02/20
2	GSM850/GPRS4Tx	Body Back, Middle ,10mm	2020/02/20
3	GSM1900	Left Cheek Middle	2020/02/22
4	GSM1900/GPRS4Tx	Body Back, Middle ,10mm	2020/02/22
5	WCDMA1900	Left Cheek Middle	2020/02/22
6	WCDMA1900	Body Back, Middle ,10mm	2020/02/22
7	WCDMA850	Right Cheek Middle	2020/02/20
8	WCDMA850	Body Back, Middle ,10mm	2020/02/20
9	LTE Band2	Left Cheek Middle	2020/02/22
10	LTE Band2	Body Back, Middle ,10mm	2020/02/22
11	LTE Band4	Left Cheek Middle	2020/02/21
12	LTE Band4	Body Back, Middle ,10mm	2020/02/21
13	LTE Band5	Right Cheek Middle	2020/02/20
14	LTE Band5	Body Back, Middle ,10mm	2020/02/20
15	LTE Band12	Right Cheek Middle	2020/02/19
16	LTE Band12	Body Back, Middle ,10mm	2020/02/19
17	LTE Band13	Right Cheek Middle	2020/02/19
18	LTE Band13	Body Back, Middle ,10mm	2020/02/19
19	LTE Band17	Right Cheek Middle	2020/02/19
20	LTE Band17	Body Back, Middle ,10mm	2020/02/19
21	WIFI 2.4G 802.11b	Left Cheek Middle	2020/02/24
22	WIFI 2.4G 802.11b	Body Back, Middle ,10mm	2020/02/24

Plot 1: GSM850, Right Cheek, Middle

Type: Phone measurement

Date of measurement: 02/20/2020

Measurement duration: 22 minutes 03 seconds

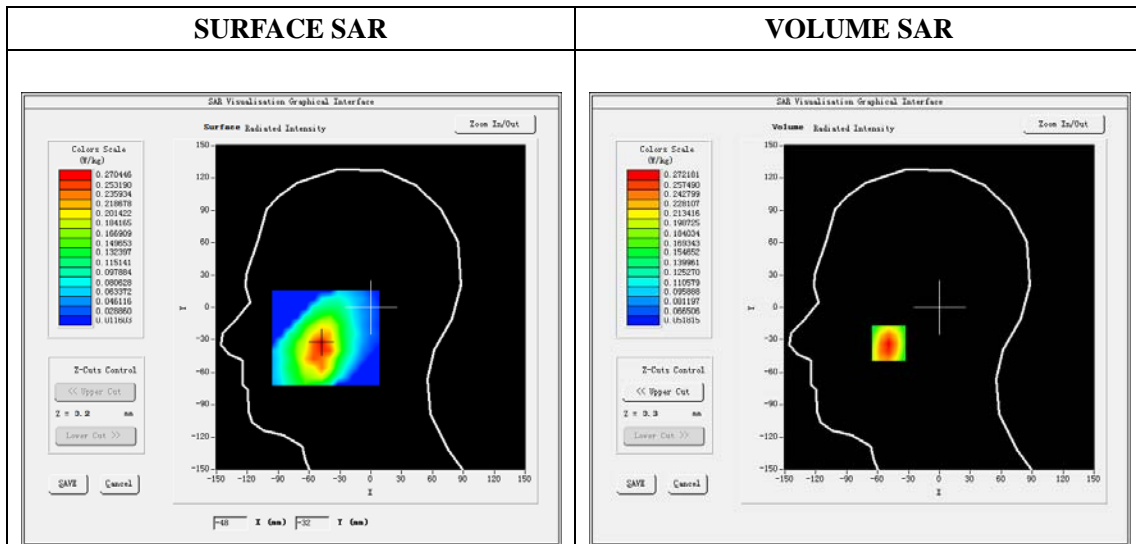
Mobile Phone IMEI number: --

A. Experimental conditions.

Area Scan	dx=8mm dy=8mm
ZoomScan	5x5x7,dx=8mm dy=8mm dz=5mm
Phantom	Validation plane
Device Position	Right Cheek
Band	GSM850
Channels	190
Signal	GSM (Duty cycle: 1:8.3)

B. SAR Measurement Results

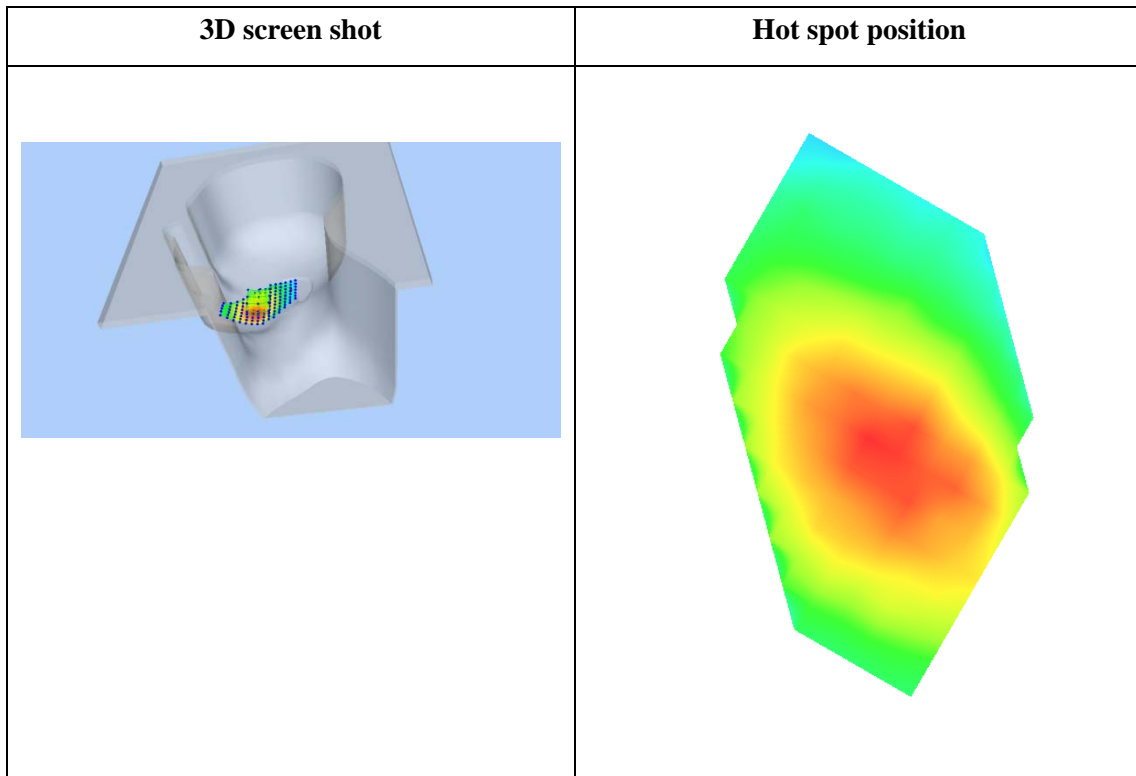
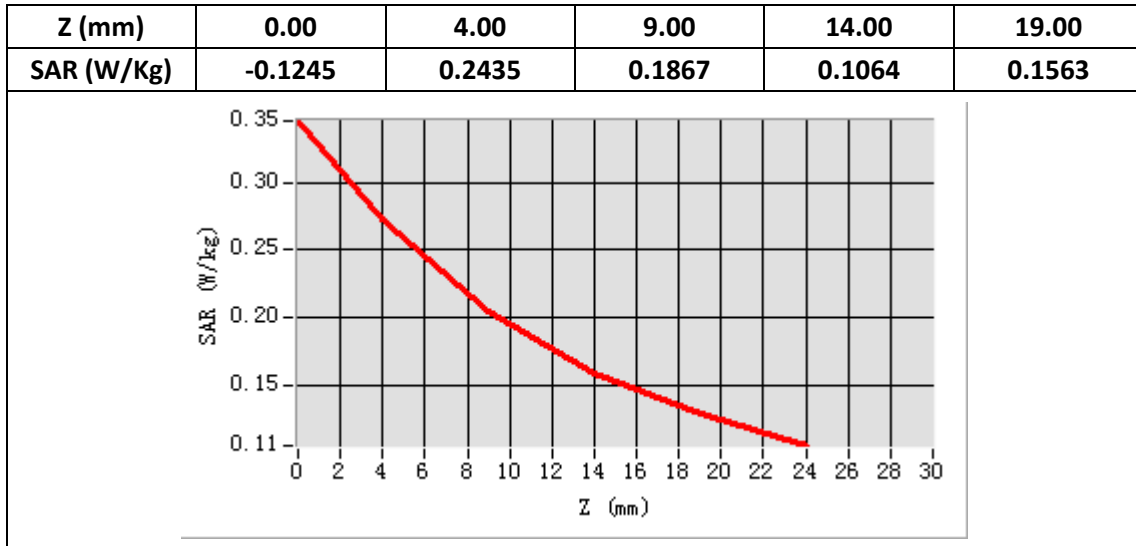
E-Field Probe	SATIMO SN_41/18_EPG0330
Frequency (MHz)	836.6
Relative permittivity (real part)	41.56
Relative permittivity (imaginary part)	20.91
Conductivity (S/m)	0.97
Variation (%)	-4.33
ConvF:	1.60



Maximum location: X=-49.00, Y=-33.00

SAR Peak: 0.35W/kg

SAR 10g (W/Kg)	0.188123
SAR 1g (W/Kg)	0.260969



Plot 2: GPRS850, Back, Middle,10mm

Type: Phone measurement

Date of measurement: 02/20/2020

Measurement duration: 22 minutes 01 seconds

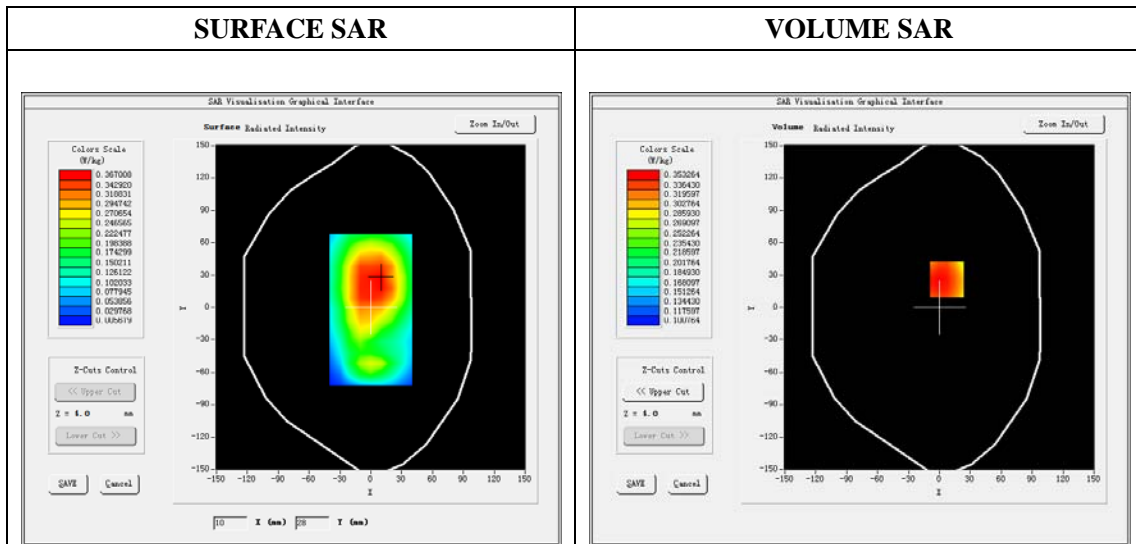
Mobile Phone IMEI number: --

A. Experimental conditions.

Area Scan	dx=8mm dy=8mm
ZoomScan	5x5x7,dx=8mm dy=8mm dz=5mm
Phantom	Validation plane
Device Position	Back
Band	GSPRS850_4Tx
Channels	190
Signal	GPRS(Duty cycle: 1:2)

B. SAR Measurement Results

E-Field Probe	SATIMO SN_41/18_EPG0330
Frequency (MHz)	836.6
Relative permittivity (real part)	55.30
Relative permittivity (imaginary part)	21.34
Conductivity (S/m)	0.99
Variation (%)	-0.69
ConvF:	1.64

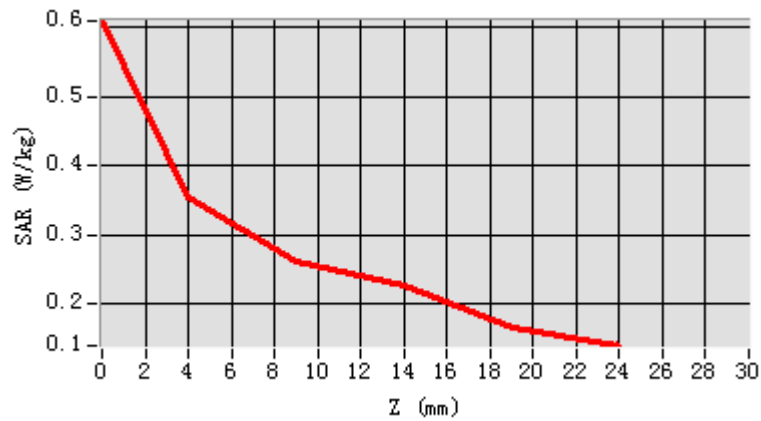


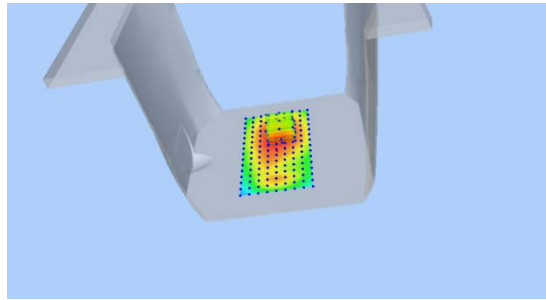
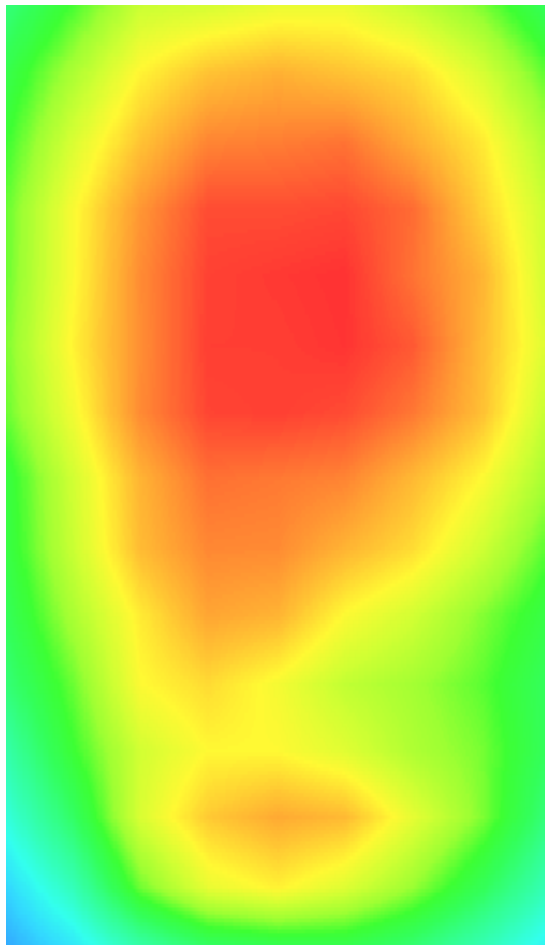
Maximum location: X=7.00, Y=26.00

SAR Peak: 0.43 W/kg

SAR 10g (W/Kg)	0.271604
SAR 1g (W/Kg)	0.350756

Z (mm)	0.00	4.00	9.00	14.00	19.00
SAR (W/Kg)	0.6096	0.3533	0.2623	0.2262	0.1651



3D screen shot	Hot spot position
	

Plot 3: GSM1900, Left Cheek, Middle

Type: Phone measurement

Date of measurement: 02/22/2020

Measurement duration: 22 minutes 04 seconds

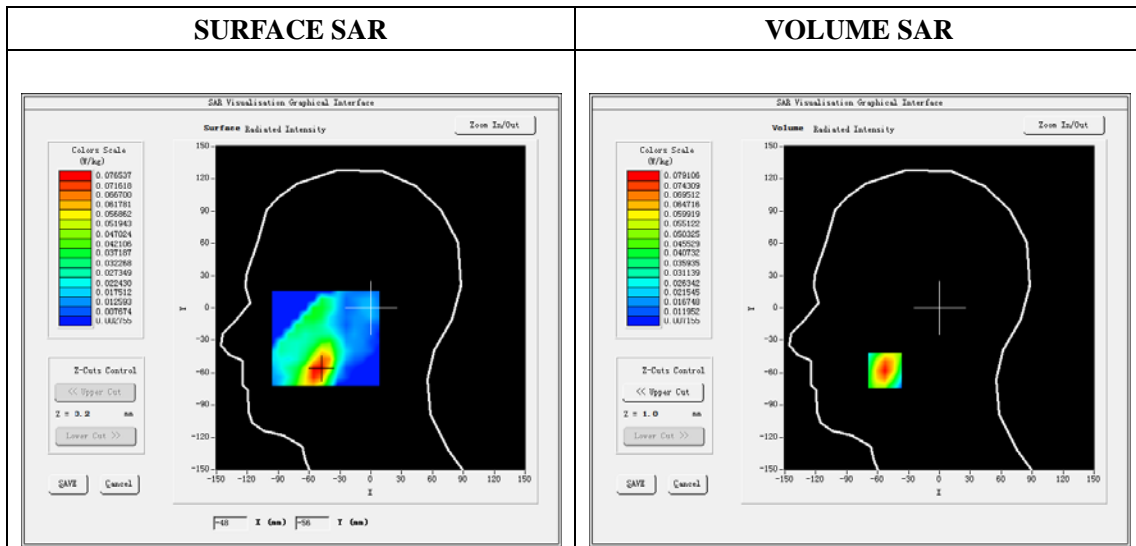
Mobile Phone IMEI number: --

A. Experimental conditions.

Area Scan	dx=8mm dy=8mm
Zoom Scan	5x5x7,dx=8mm dy=8mm dz=5mm
Phantom	Validation plane
Device Position	Left Cheek
Band	GSM1900
Channels	661
Signal	GSM (Duty cycle: 1:8.3)

B. SAR Measurement Results

E-Field Probe	SATIMO SN_41/18_EPG0330
Frequency (MHz)	1880
Relative permittivity (real part)	40.33
Relative permittivity (imaginary part)	13.26
Conductivity (S/m)	1.40
Variation (%)	0.66
ConvF:	2.03

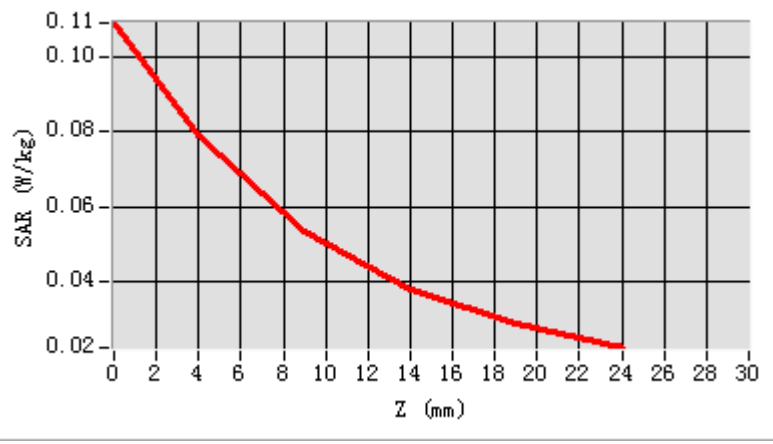


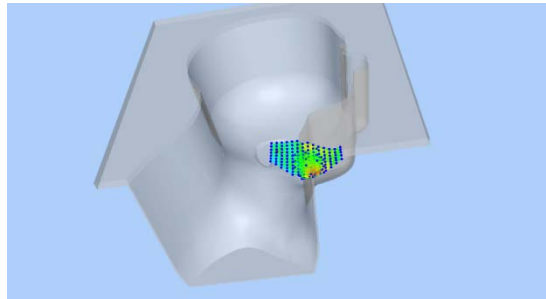
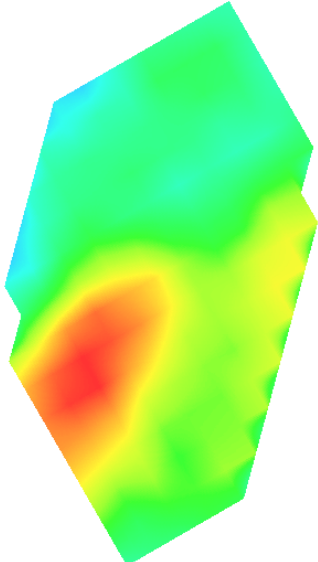
Maximum location: X=-53.00, Y=-58.00

SAR Peak: 0.11 W/kg

SAR 10g (W/Kg)	0.045840
SAR 1g (W/Kg)	0.074069

Z (mm)	0.00	4.00	9.00	14.00	19.00
SAR (W/Kg)	0.1093	0.0791	0.0534	0.0378	0.0285



3D screen shot	Hot spot position
	

Plot 4: GPRS1900, Back, Middle ,10mm

Type: Phone measurement

Date of measurement: 02/22/2020

Measurement duration: 22 minutes 06 seconds

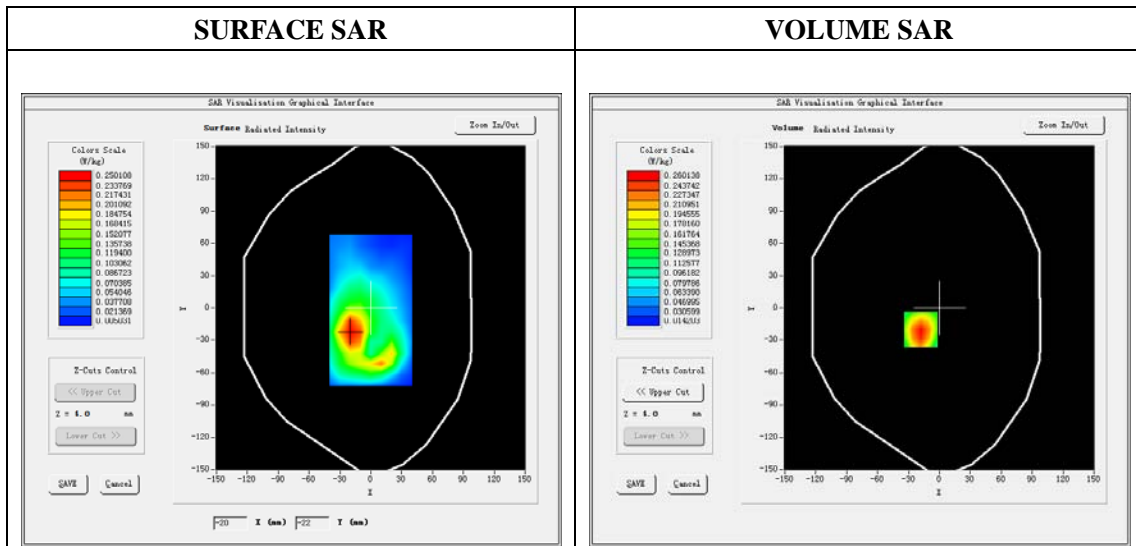
Mobile Phone IMEI number: --

A. Experimental conditions.

Area Scan	dx=8mm dy=8mm
Zoom Scan	5x5x7,dx=8mm dy=8mm dz=5mm
Phantom	Validation plane
Device Position	Back
Band	GPRS1900_4Tx
Channels	661
Signal	GPRS(Duty cycle: 1:2)

B. SAR Measurement Results

E-Field Probe	SATIMO SN_41/18_EPG0330
Frequency (MHz)	1880
Relative permittivity (real part)	53.29
Relative permittivity (imaginary part)	14.40
Conductivity (S/m)	1.52
Variation (%)	-4.48
ConvF:	2.08

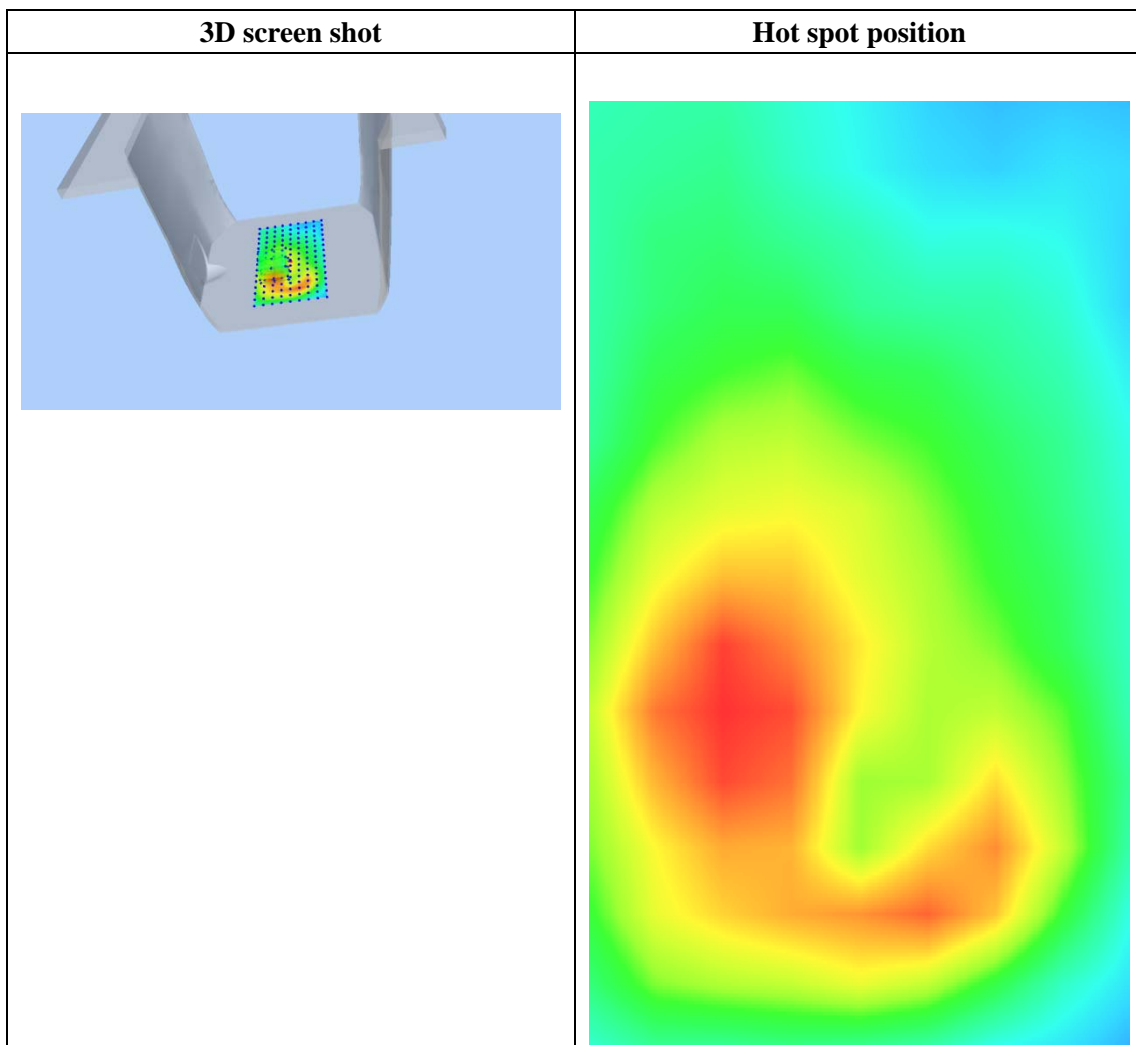
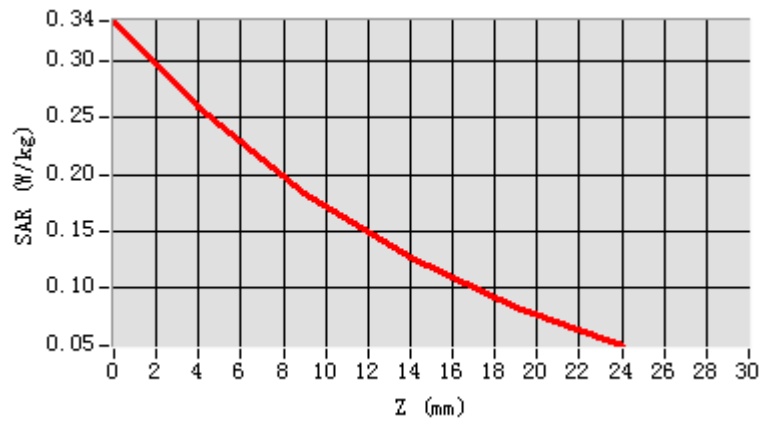


Maximum location: X=-18.00, Y=-20.00

SAR Peak: 0.35 W/kg

SAR 10g (W/Kg)	0.154143
SAR 1g (W/Kg)	0.247916

Z (mm)	0.00	4.00	9.00	14.00	19.00
SAR (W/Kg)	0.3357	0.2601	0.1844	0.1264	0.0826



Plot 5: WCDMA1900, Left Cheek, Middle,10mm

Type: Phone measurement

Date of measurement: 02/22/2020

Measurement duration: 22 minutes 02 seconds

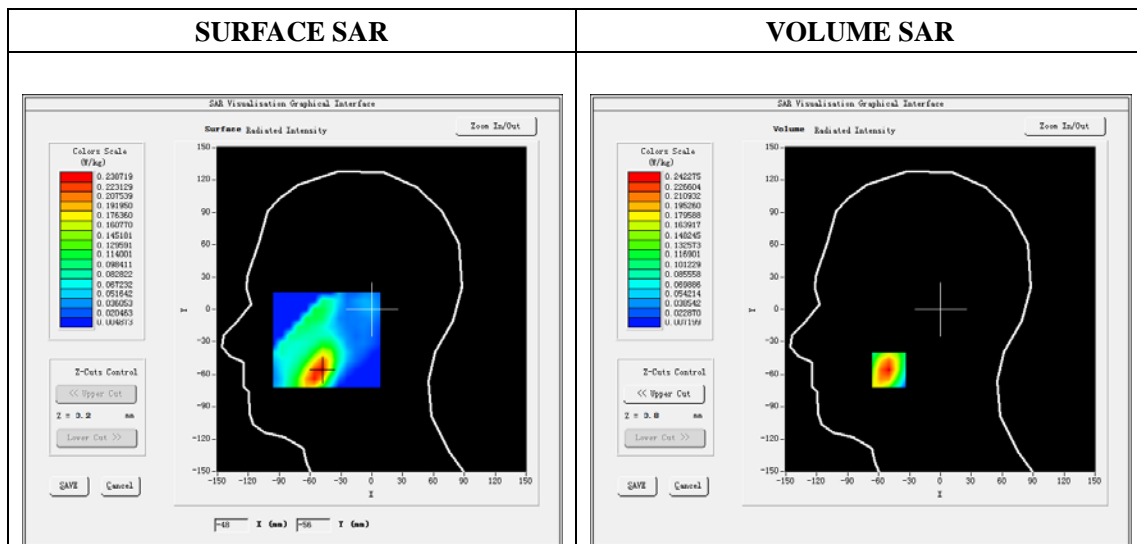
Mobile Phone IMEI number: --

A. Experimental conditions.

Area Scan	dx=8mm dy=8mm
ZoomScan	5x5x7,dx=8mm dy=8mm dz=5mm
Phantom	Validation plane
Device Position	Left Cheek
Band	Band2_WCDMA1900
Channels	9400
Signal	WCDMA (Duty cycle: 1:1)

B. SAR Measurement Results

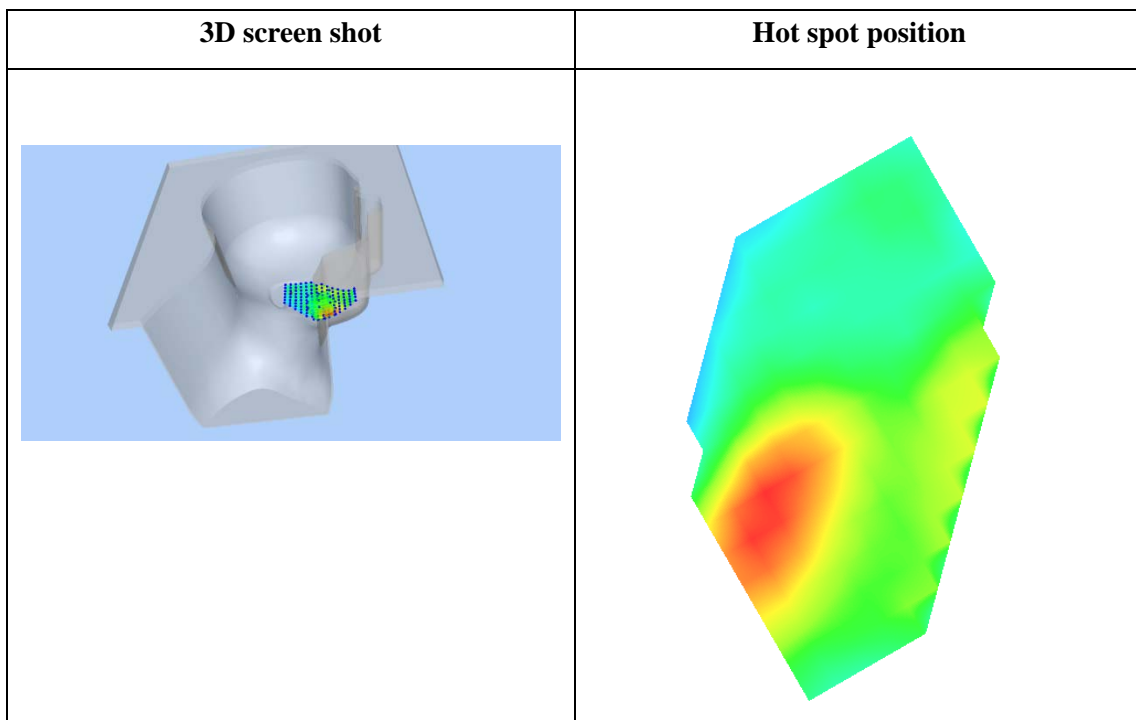
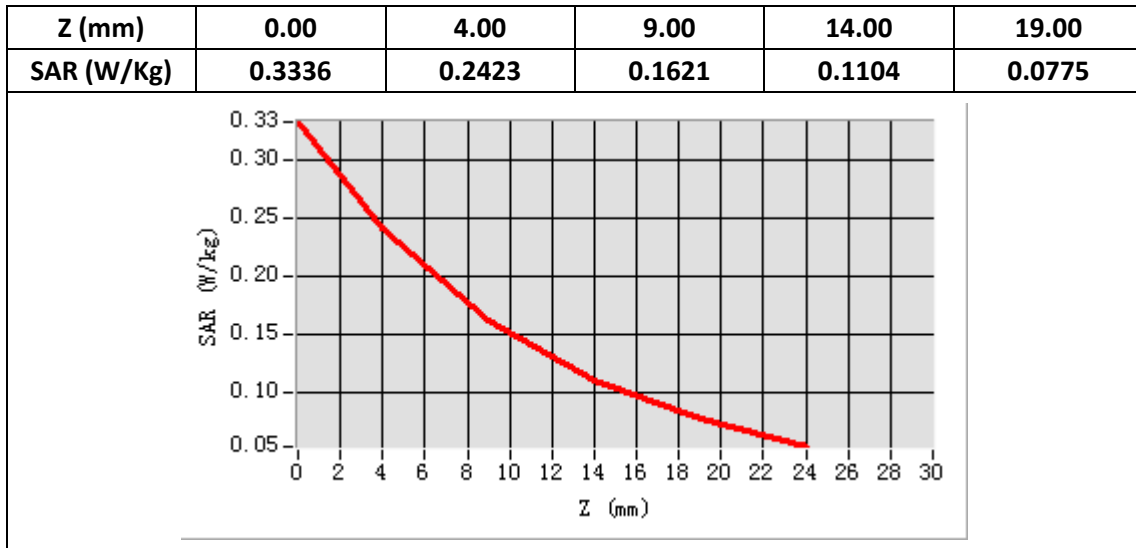
E-Field Probe	SATIMO SN_41/18_EPG0330
Frequency (MHz)	1880
Relative permittivity (real part)	40.33
Relative permittivity (imaginary)	13.26
Conductivity (S/m)	1.40
Variation (%)	-3.63
ConvF:	2.03



Maximum location: X=-50.00, Y=-56.00

SAR Peak: 0.34W/kg

SAR 10g (W/Kg)	0.137750
SAR 1g (W/Kg)	0.228290



Plot 6: WCDMA1900, Back, Middle,10mm

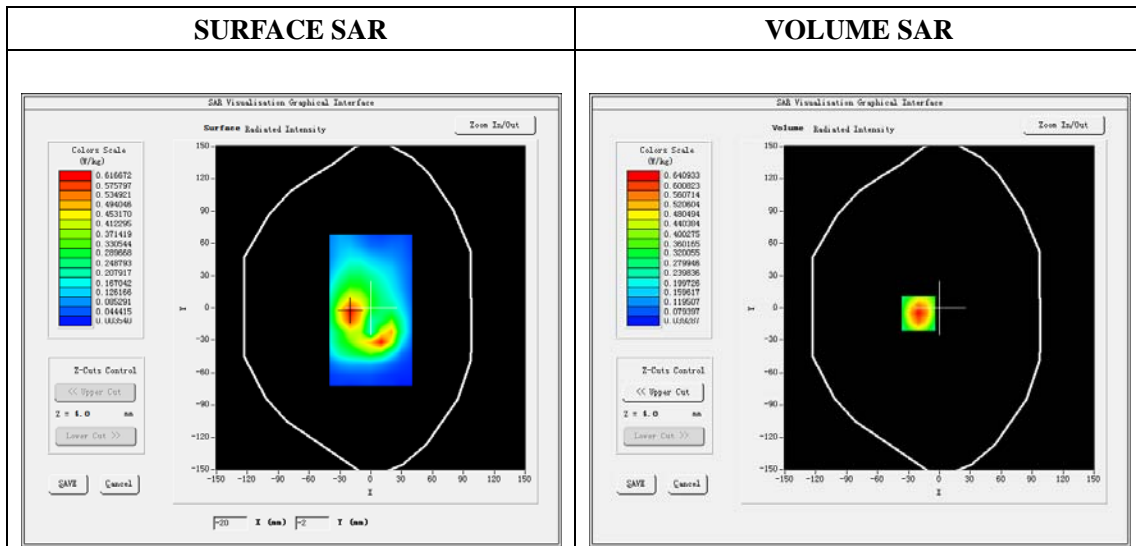
Type: Phone measurement
 Date of measurement: 02/22/2020
 Measurement duration: 22 minutes 07 seconds
 Mobile Phone IMEI number: --

A. Experimental conditions.

Area Scan	dx=8mm dy=8mm
ZoomScan	5x5x7,dx=8mm dy=8mm dz=5mm
Phantom	Validation plane
Device Position	Back
Band	Band2_WCDMA1900
Channels	9400
Signal	WCDMA (Duty cycle: 1:1)

B. SAR Measurement Results

E-Field Probe	SATIMO SN_41/18_EPG0330
Frequency (MHz)	1880
Relative permittivity (real part)	53.29
Relative permittivity (imaginary)	14.40
Conductivity (S/m)	1.52
Variation (%)	-1.34
ConvF:	2.08

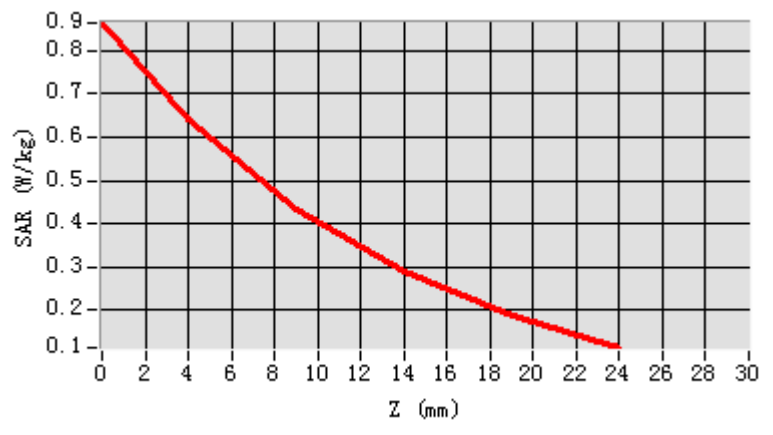


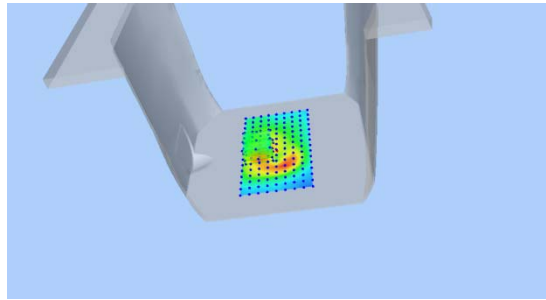
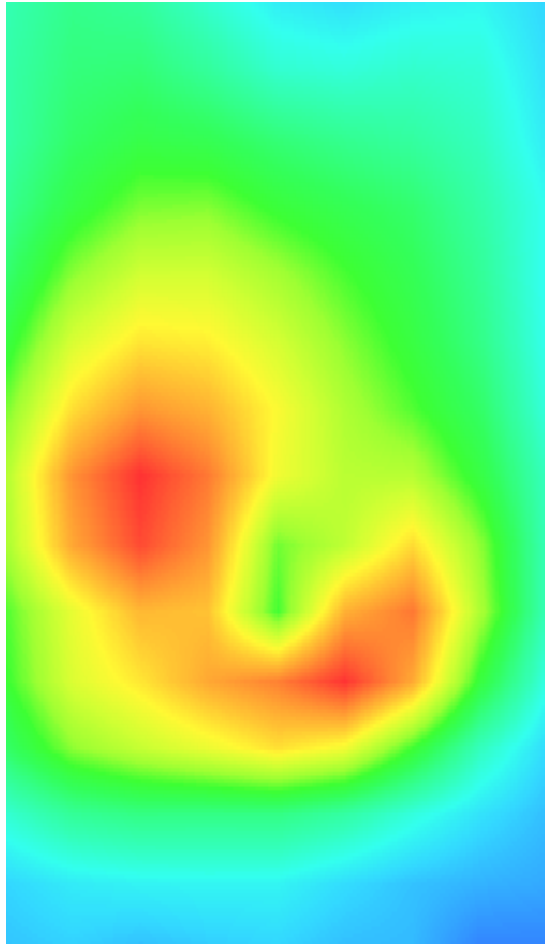
Maximum location: X=-20.00, Y=-5.00

SAR Peak: 0.87W/kg

SAR 10g (W/Kg)	0.360586
SAR 1g (W/Kg)	0.599017

Z (mm)	0.00	4.00	9.00	14.00	19.00
SAR (W/Kg)	0.8643	0.6409	0.4332	0.2879	0.1873



3D screen shot	Hot spot position
	

Plot 7: WCDMA850, Right Cheek, Middle

Type: Phone measurement

Date of measurement: 02/20/2020

Measurement duration: 22 minutes 12 seconds

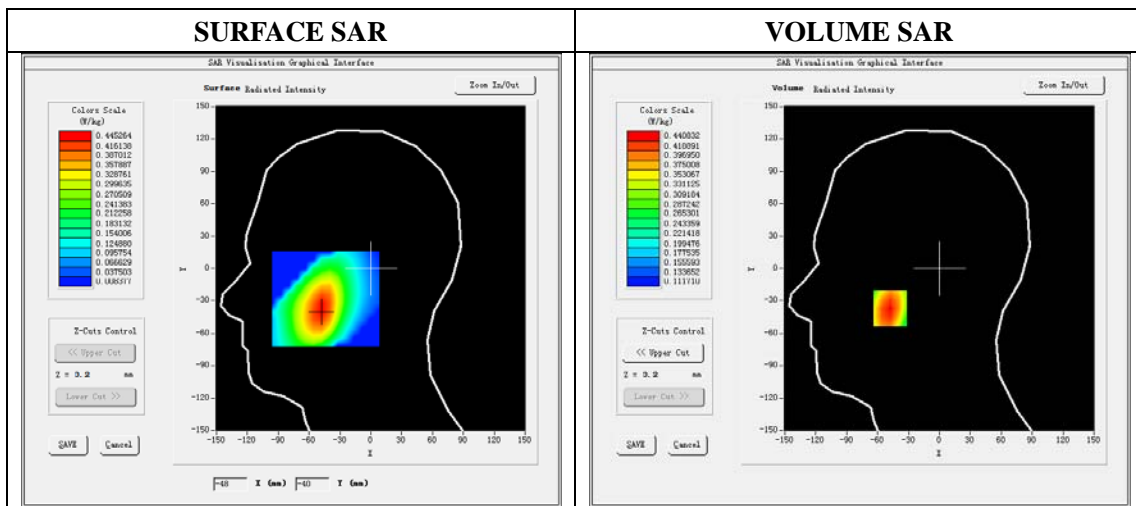
Mobile Phone IMEI number: --

A. Experimental conditions.

Area Scan	dx=8mm dy=8mm
ZoomScan	5x5x7,dx=8mm dy=8mm dz=5mm
Phantom	Validation plane
Device Position	Right Cheek
Band	Band5_WCDMA850
Channels	4183
Signal	WCDMA (Duty cycle: 1:1)

B. SAR Measurement Results

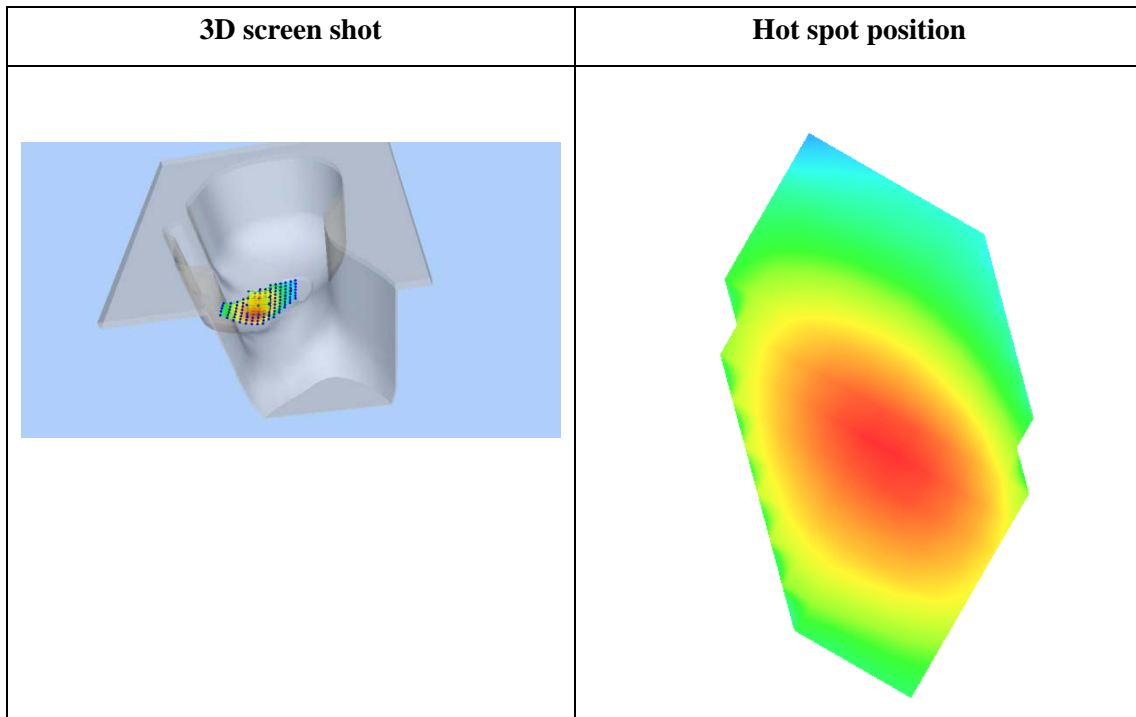
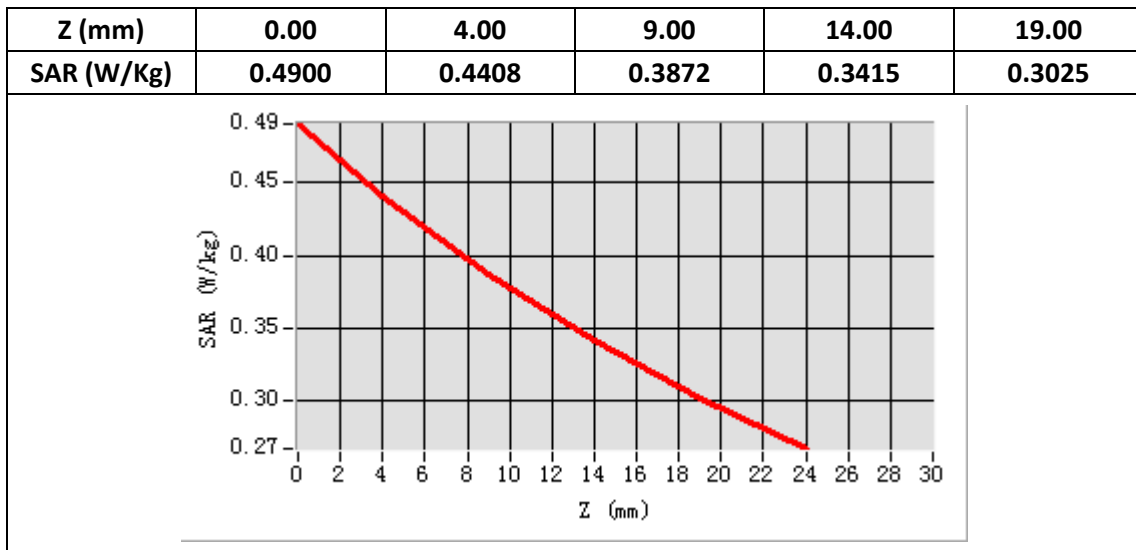
E-Field Probe	SATIMO SN_41/18_EPG0330
Frequency (MHz)	836.6
Relative permittivity (real part)	41.56
Relative permittivity (imaginary)	20.91
Conductivity (S/m)	0.97
Variation (%)	-4.60
ConvF:	1.60



Maximum location: X=-48.00, Y=-37.00

SAR Peak: 0.49W/kg

SAR 10g (W/Kg)	0.352271
SAR 1g (W/Kg)	0.429054



Plot 8: WCDMA850, Back, Middle,10mm

Type: Phone measurement

Date of measurement: 02/20/2020

Measurement duration: 22 minutes 09 seconds

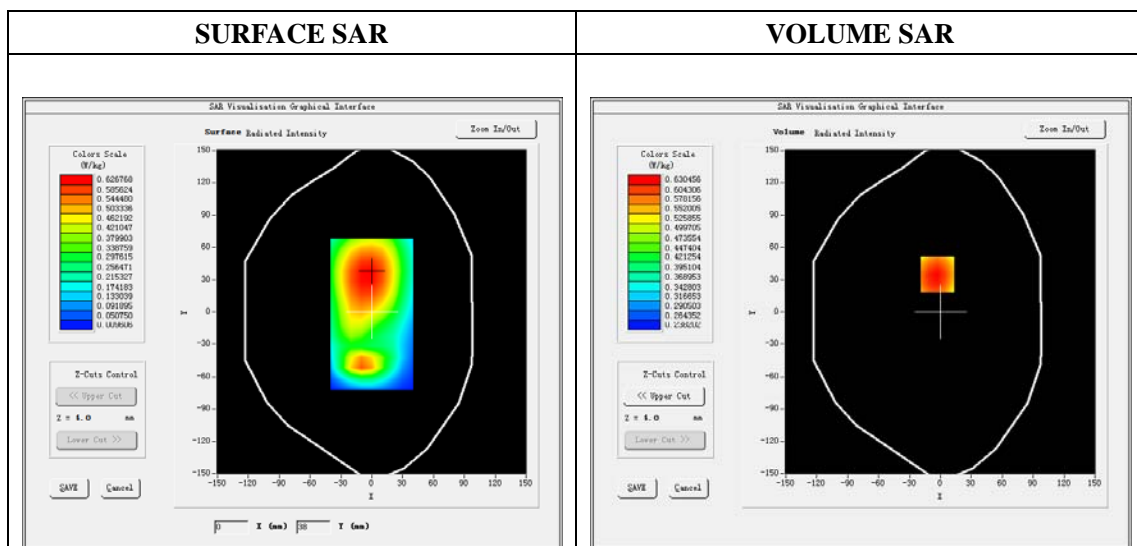
Mobile Phone IMEI number: --

A. Experimental conditions.

Area Scan	dx=8mm dy=8mm
ZoomScan	5x5x7,dx=8mm dy=8mm dz=5mm
Phantom	Validation plane
Device Position	Back
Band	Band5_WCDMA850
Channels	4183
Signal	WCDMA (Duty cycle: 1:1)

B. SAR Measurement Results

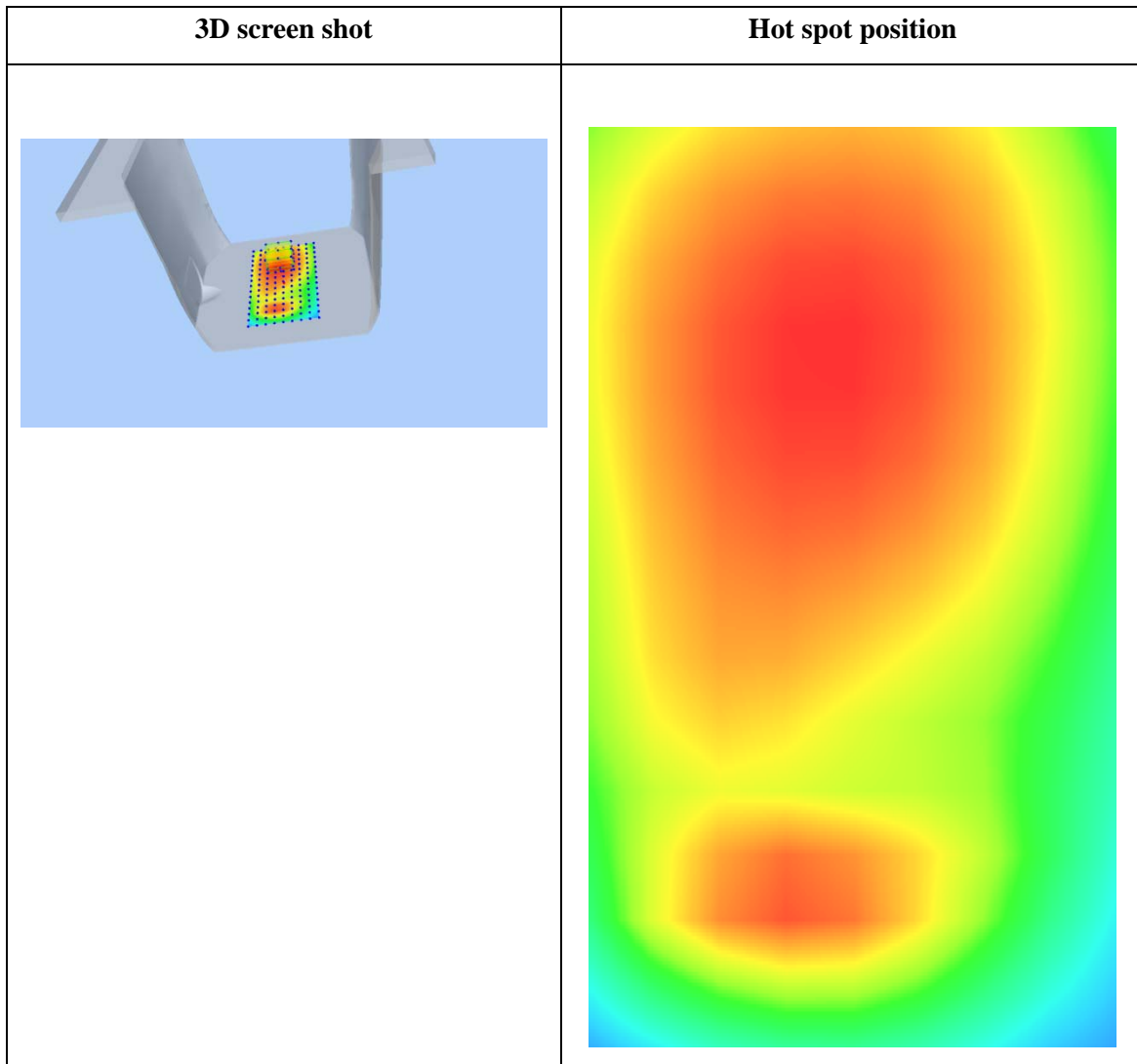
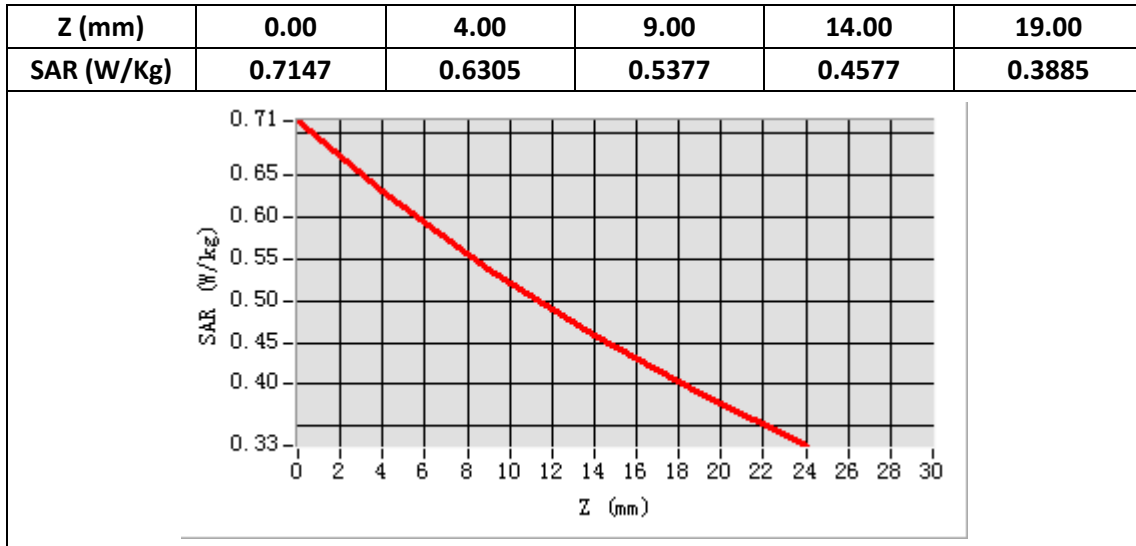
E-Field Probe	SATIMO SN_41/18_EPG0330
Frequency (MHz)	836.6
Relative permittivity (real part)	55.30
Relative permittivity (imaginary)	21.34
Conductivity (S/m)	0.99
Variation (%)	-0.29
ConvF:	1.64



Maximum location: X=-3.00, Y=35.00

SAR Peak: 0.72W/kg

SAR 10g (W/Kg)	0.509233
SAR 1g (W/Kg)	0.626842



Plot 9: LTE Band2, 20MHz, Left Cheek, Middle

Type: Phone measurement

Date of measurement: 02/22/2020

Measurement duration: 22 minutes 11 seconds

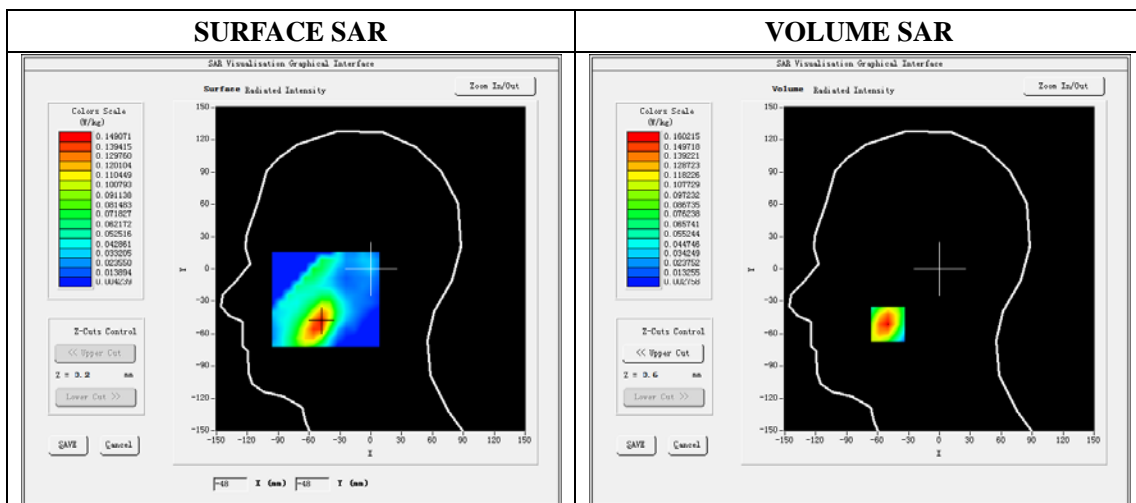
Mobile Phone IMEI number: --

A. Experimental conditions.

Area Scan	dx=8mm dy=8mm
ZoomScan	5x5x7,dx=8mm dy=8mm dz=5mm
Phantom	Validation plane
Device Position	Left Cheek
Band	LTE Band 2
Channels	18900
Signal	LTE (Duty cycle: 1:1)

B. SAR Measurement Results

E-Field Probe	SATIMO SN_41/18_EPG0330
Frequency (MHz)	1880
Relative permittivity (real part)	40.33
Relative permittivity (imaginary)	13.26
Conductivity (S/m)	1.40
Variation (%)	-3.48
ConvF:	2.03

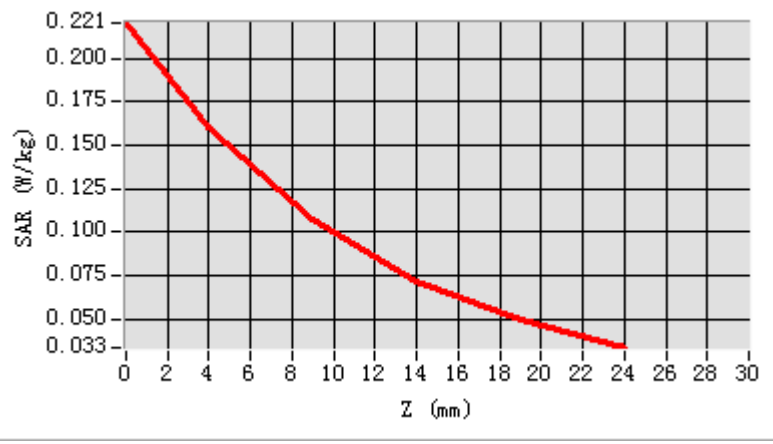


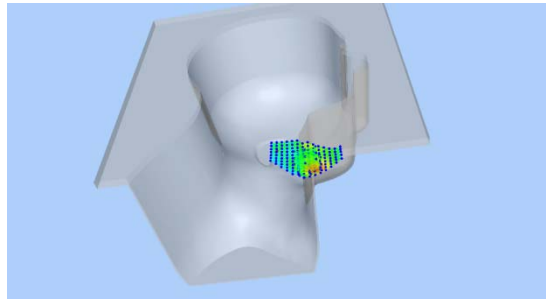
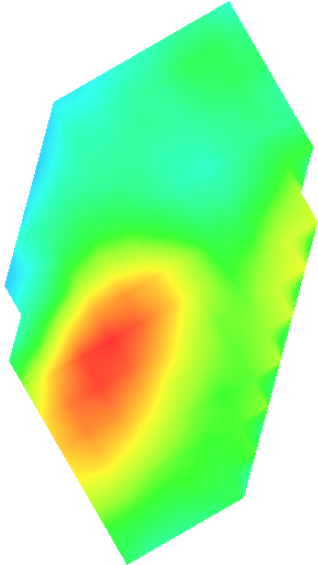
Maximum location: X=-50.00, Y=-51.00

SAR Peak: 0.22 W/kg

SAR 10g (W/Kg)	0.091406
SAR 1g (W/Kg)	0.150841

Z (mm)	0.00	4.00	9.00	14.00	19.00
SAR (W/Kg)	0.2206	0.1602	0.1068	0.0719	0.0493



3D screen shot	Hot spot position
	

Plot 10: LTE Band2, 20MHz, Back, Middle,10mm

Type: Phone measurement

Date of measurement: 02/22/2020

Measurement duration: 22 minutes 10 seconds

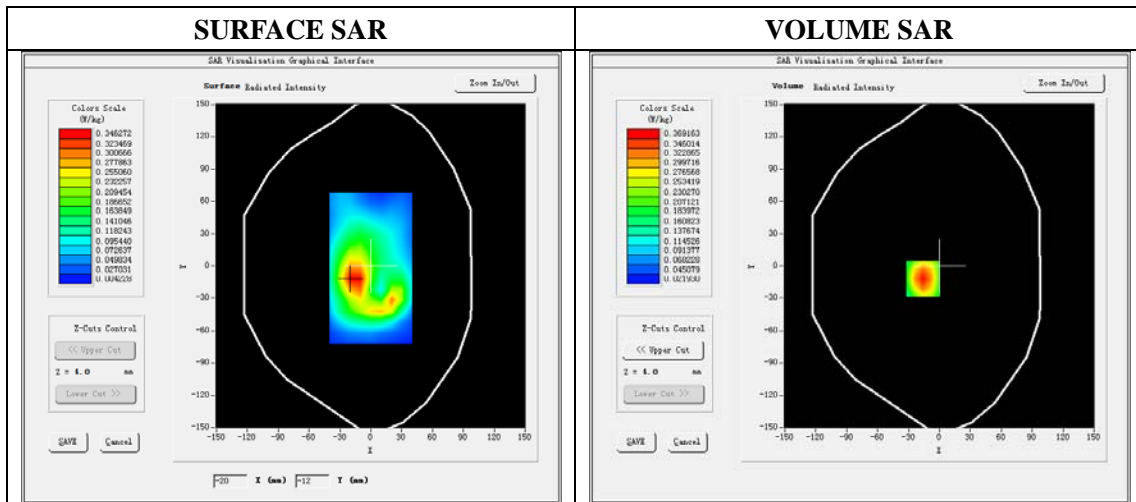
Mobile Phone IMEI number: --

A. Experimental conditions.

Area Scan	dx=8mm dy=8mm
ZoomScan	5x5x7,dx=8mm dy=8mm dz=5mm
Phantom	Validation plane
Device Position	Back
Band	LTE Band 2
Channels	18900
Signal	LTE (Duty cycle: 1:1)

B. SAR Measurement Results

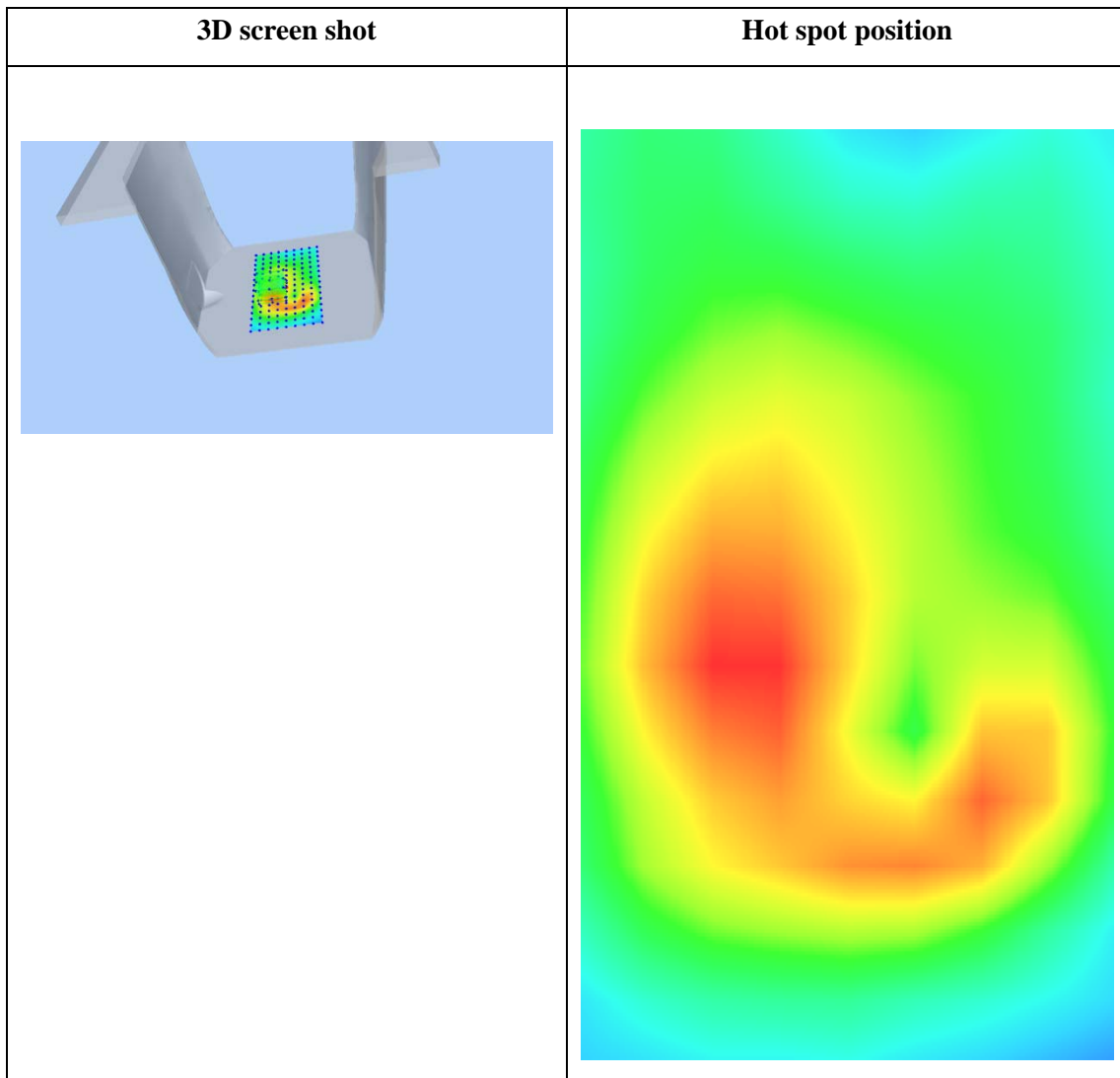
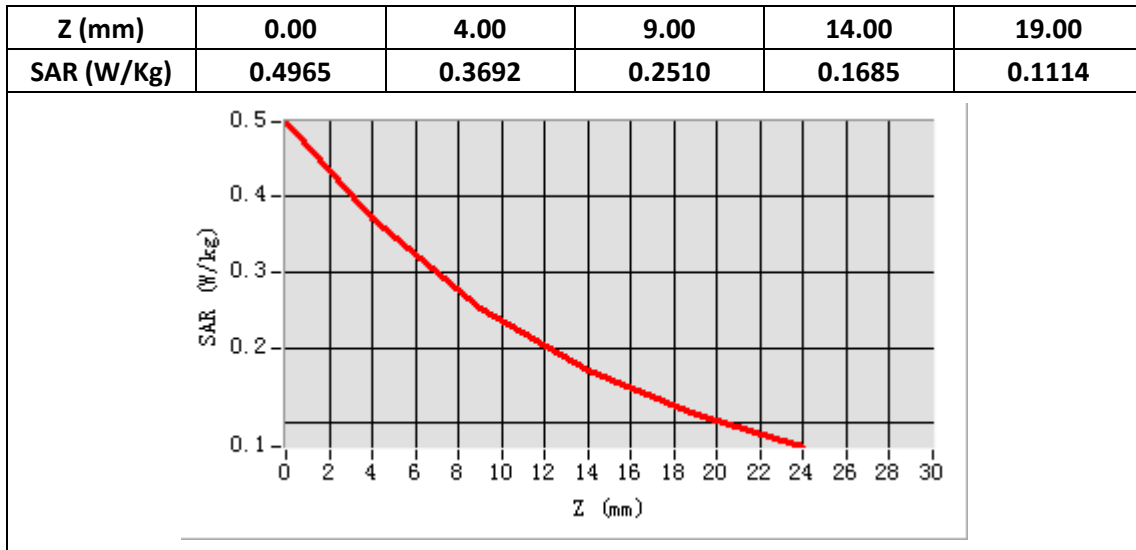
E-Field Probe	SATIMO SN_41/18_EPG0330
Frequency (MHz)	1880
Relative permittivity (real part)	53.29
Relative permittivity (imaginary)	14.40
Conductivity (S/m)	1.52
Variation (%)	-2.16
ConvF:	2.08



Maximum location: X=-16.00, Y=-12.00

SAR Peak: 0.50W/kg

SAR 10g (W/Kg)	0.212032
SAR 1g (W/Kg)	0.346134



Plot 11: LTE Band4, 20MHz, Left Cheek, Middle

Type: Phone measurement

Date of measurement: 02/21/2020

Measurement duration: 22 minutes 14 seconds

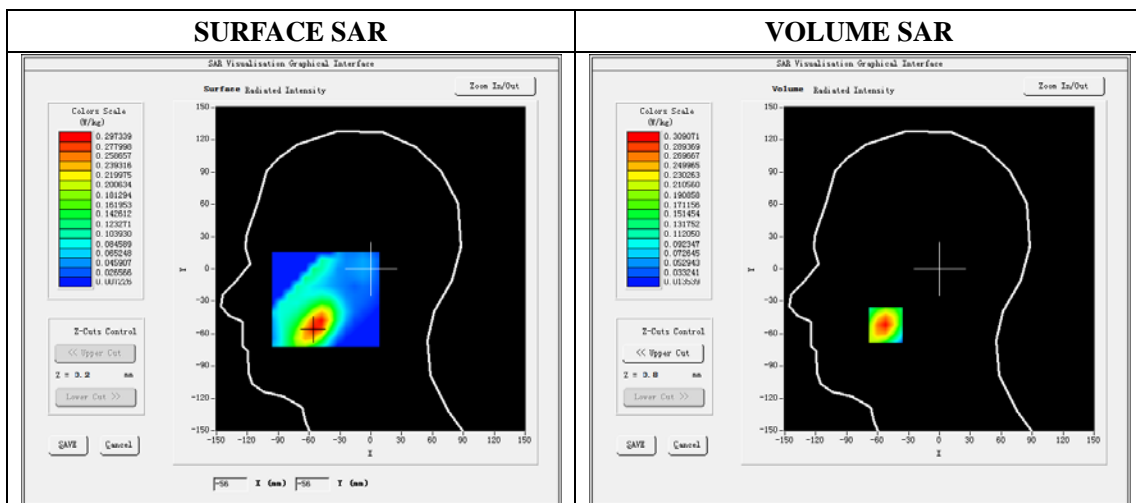
Mobile Phone IMEI number: --

A. Experimental conditions.

Area Scan	dx=8mm dy=8mm
ZoomScan	5x5x7,dx=8mm dy=8mm dz=5mm
Phantom	Validation plane
Device Position	Left Cheek
Band	LTE Band 4
Channels	20175
Signal	LTE (Duty cycle: 1:1)

B. SAR Measurement Results

E-Field Probe	SATIMO SN_41/18_EPG0330
Frequency (MHz)	1732.5
Relative permittivity (real part)	40.42
Relative permittivity (imaginary)	13.80
Conductivity (S/m)	1.38
Variation (%)	-4.21
ConvF:	1.74

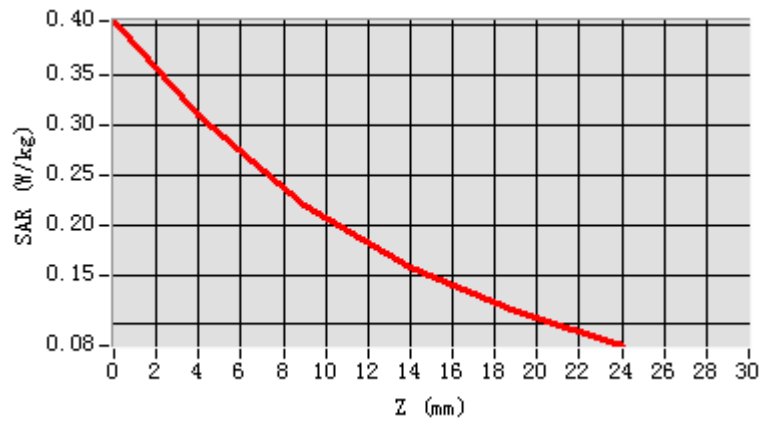


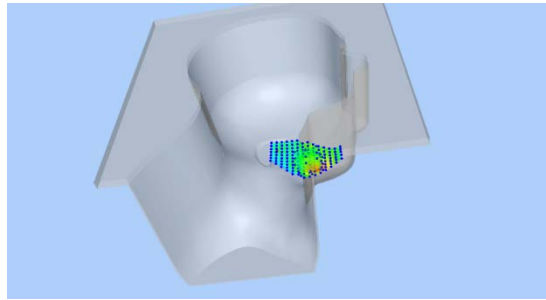
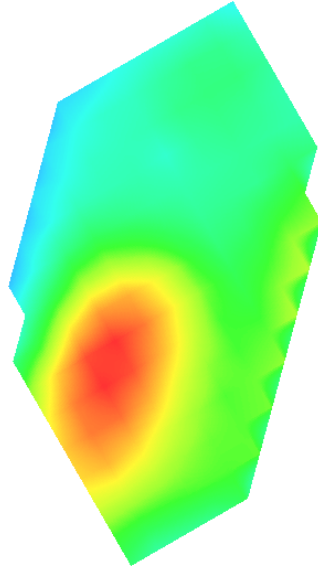
Maximum location: X=-52.00, Y=-52.00

SAR Peak: 0.40 W/kg

SAR 10g (W/Kg)	0.183830
SAR 1g (W/Kg)	0.295284

Z (mm)	0.00	4.00	9.00	14.00	19.00
SAR (W/Kg)	0.4037	0.3091	0.2202	0.1572	0.1127



3D screen shot	Hot spot position
	

Plot 12: LTE Band4, 20MHz, Back, Middle,10mm

Type: Phone measurement

Date of measurement: 02/21/2020

Measurement duration: 22 minutes 16 seconds

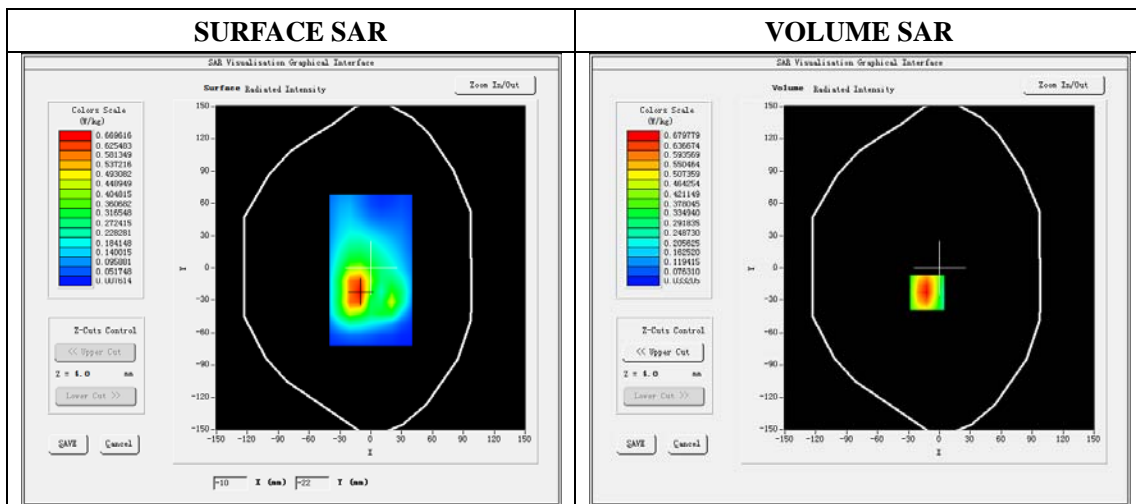
Mobile Phone IMEI number: --

A. Experimental conditions.

Area Scan	dx=8mm dy=8mm
ZoomScan	5x5x7,dx=8mm dy=8mm dz=5mm
Phantom	Validation plane
Device Position	Back
Band	LTE Band 4
Channels	20175
Signal	LTE (Duty cycle: 1:1)

B. SAR Measurement Results

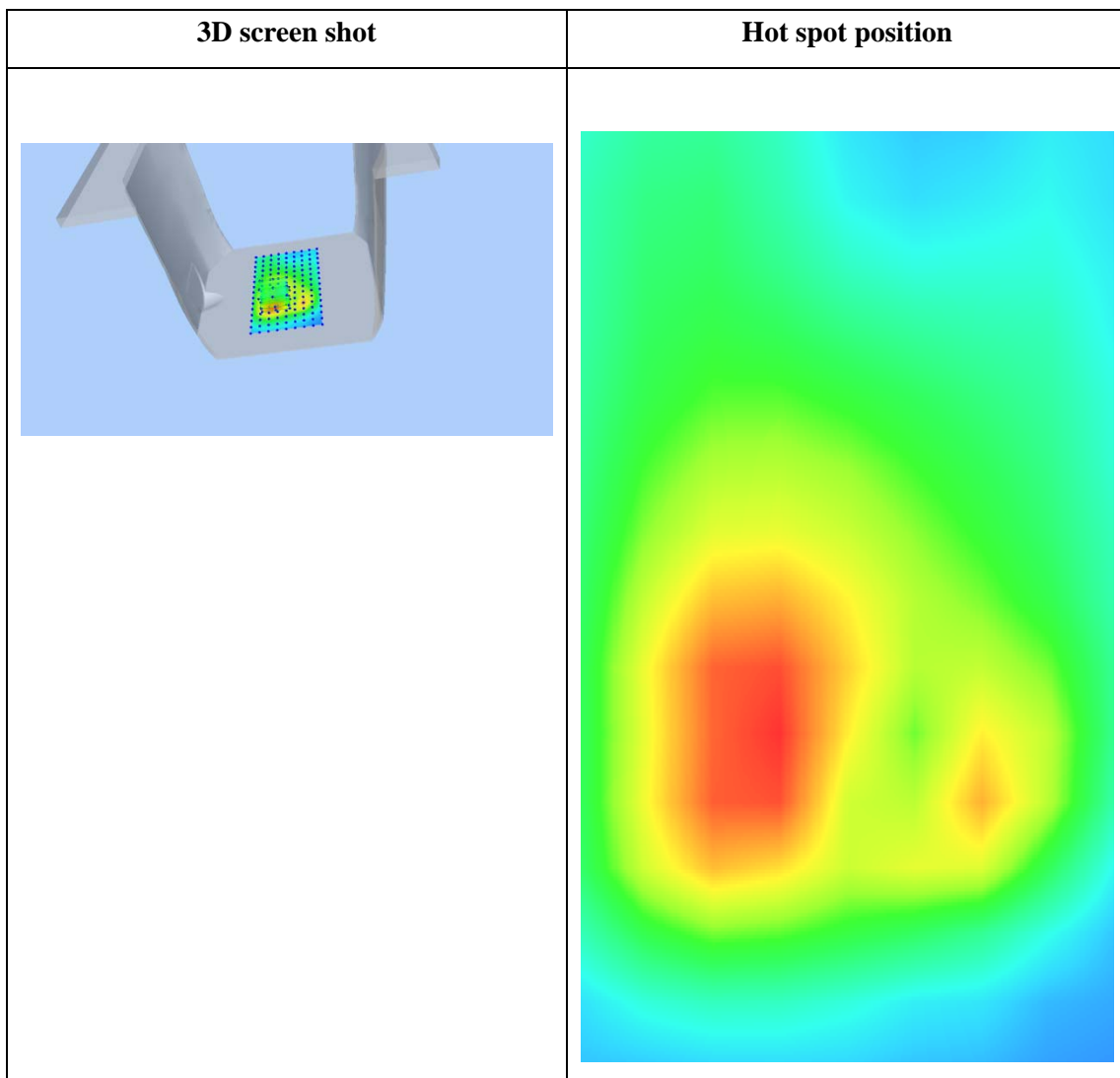
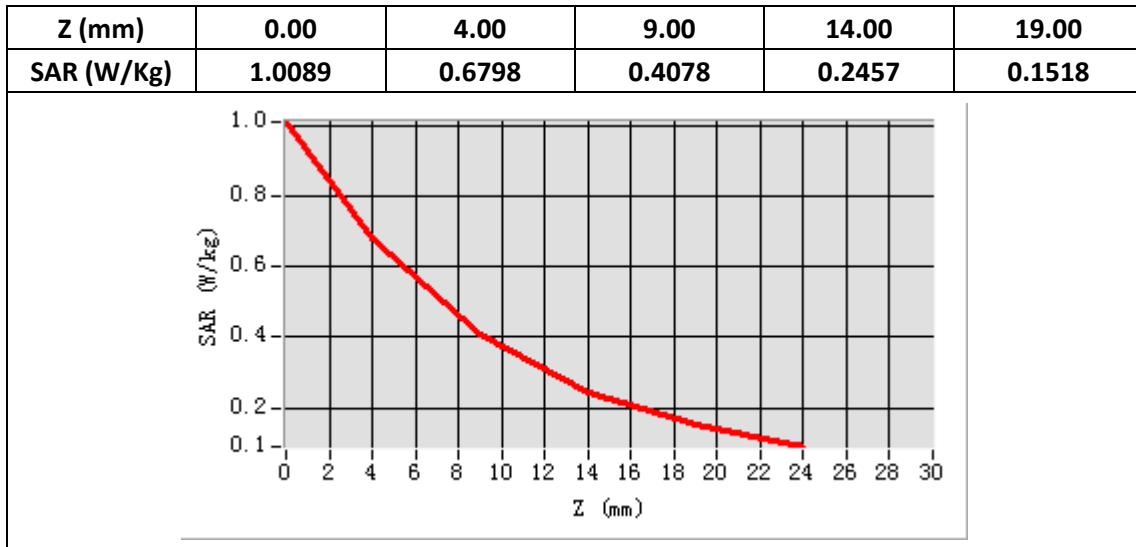
E-Field Probe	SATIMO SN_41/18_EPG0330
Frequency (MHz)	1732.5
Relative permittivity (real part)	53.37
Relative permittivity (imaginary)	15.00
Conductivity (S/m)	1.50
Variation (%)	-2.34
ConvF:	1.81



Maximum location: X=-12.00, Y=-23.00

SAR Peak: 1.01W/kg

SAR 10g (W/Kg)	0.380477
SAR 1g (W/Kg)	0.642710



Plot 13: LTE Band5, 10MHz,Right Cheek, Middle

Type: Phone measurement

Date of measurement: 02/20/2020

Measurement duration: 22 minutes 15 seconds

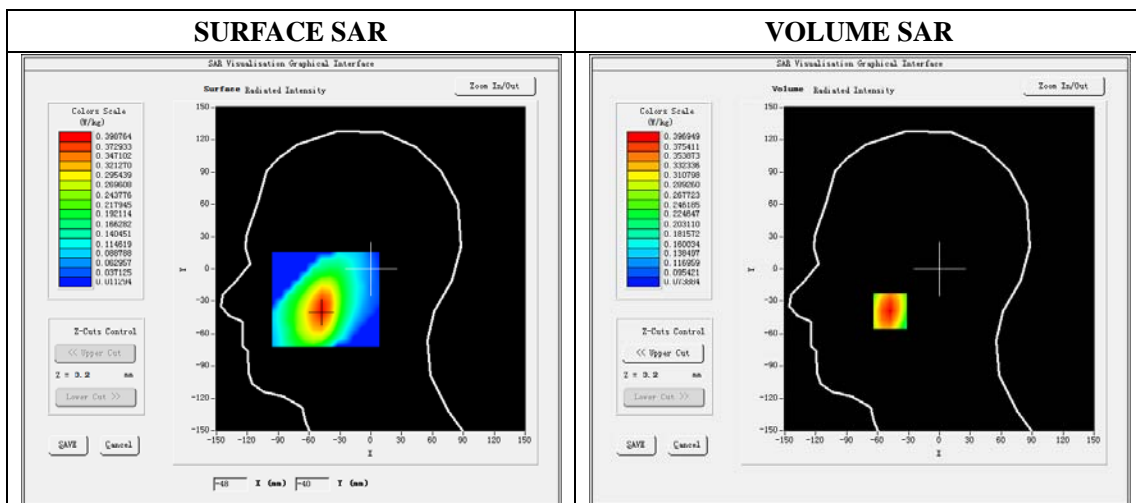
Mobile Phone IMEI number: --

A. Experimental conditions.

Area Scan	dx=8mm dy=8mm
ZoomScan	5x5x7,dx=8mm dy=8mm dz=5mm
Phantom	Validation plane
Device Position	Right Cheek
Band	LTE Band 5
Channels	20525
Signal	LTE (Duty cycle: 1:1)

B. SAR Measurement Results

E-Field Probe	SATIMO SN_41/18_EPG0330
Frequency (MHz)	836.5
Relative permittivity (real part)	41.56
Relative permittivity (imaginary)	20.91
Conductivity (S/m)	0.97
Variation (%)	-0.22
ConvF:	1.60

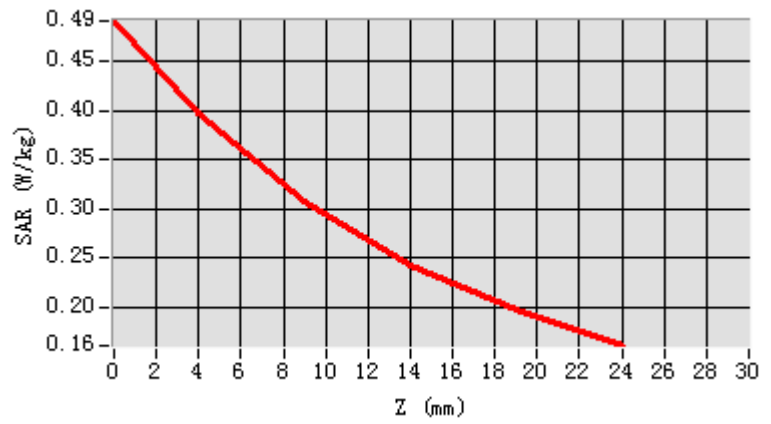


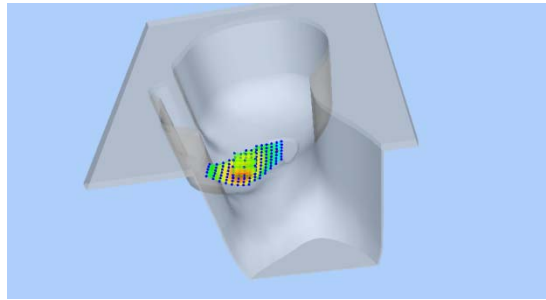
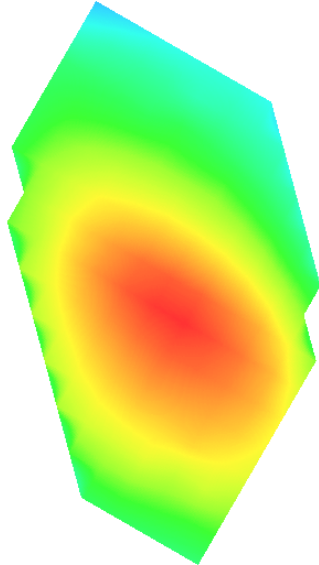
Maximum location: X=-48.00, Y=-39.00

SAR Peak: 0.49 W/kg

SAR 10g (W/Kg)	0.278959
SAR 1g (W/Kg)	0.381233

Z (mm)	0.00	4.00	9.00	14.00	19.00
SAR (W/Kg)	0.4906	0.3969	0.3074	0.2431	0.1971



3D screen shot	Hot spot position
	

Plot 14: LTE Band5, 10MHz, Back, Middle,10mm

Type: Phone measurement

Date of measurement: 02/20/2020

Measurement duration: 22 minutes 18 seconds

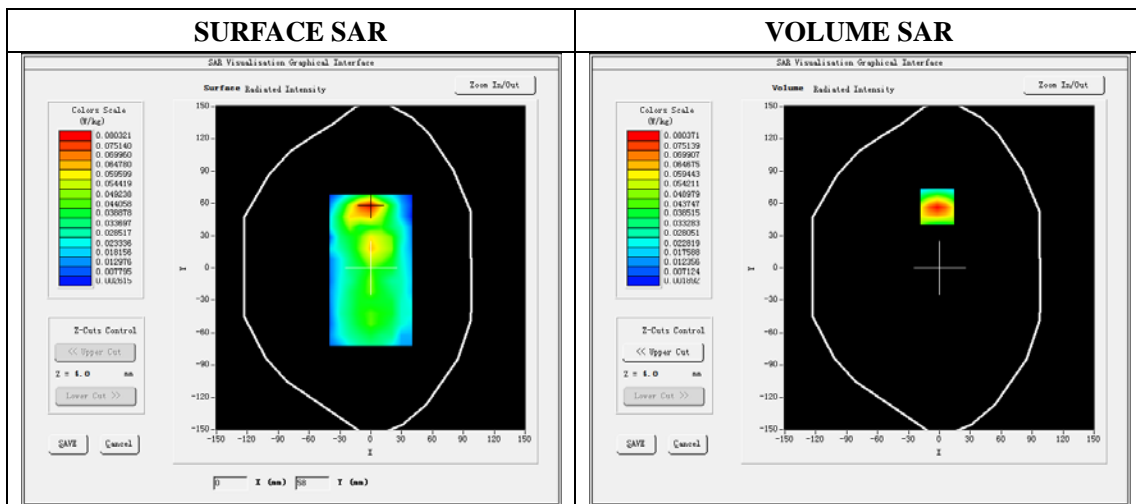
Mobile Phone IMEI number: --

A. Experimental conditions.

Area Scan	dx=8mm dy=8mm
ZoomScan	5x5x7,dx=8mm dy=8mm dz=5mm
Phantom	Validation plane
Device Position	Back
Band	LTE Band 5
Channels	20525
Signal	LTE (Duty cycle: 1:1)

B. SAR Measurement Results

E-Field Probe	SATIMO SN_41/18_EPG0330
Frequency (MHz)	836.5
Relative permittivity (real part)	55.30
Relative permittivity (imaginary)	21.34
Conductivity (S/m)	0.99
Variation (%)	-3.03
ConvF:	1.64

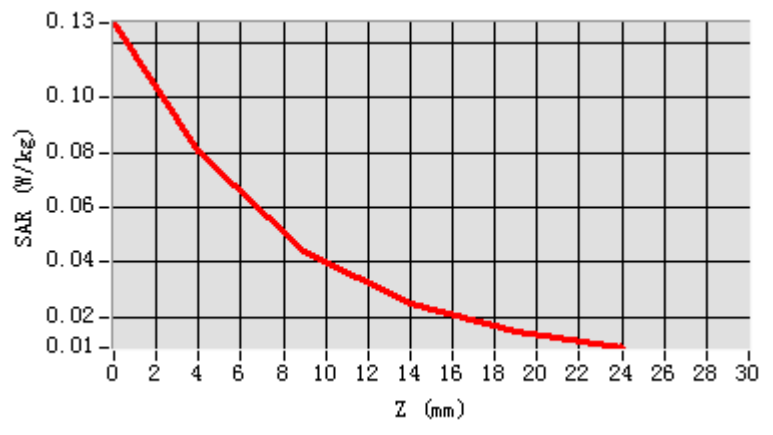


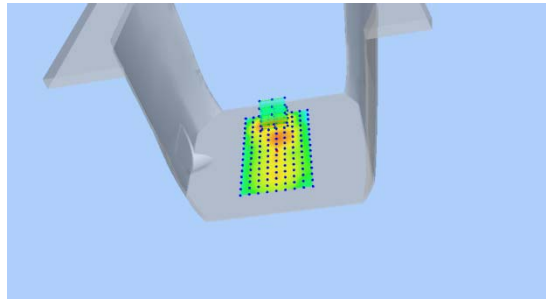
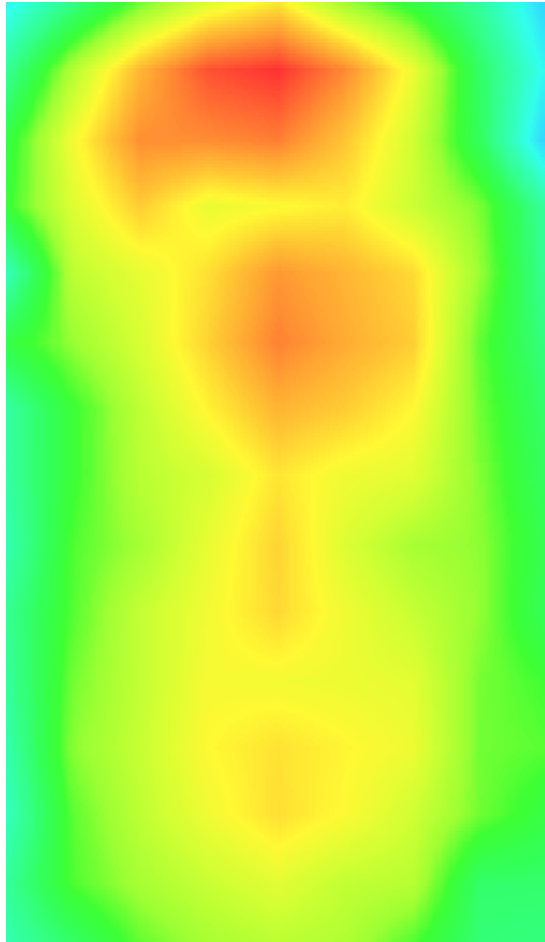
Maximum location: X=-2.00, Y=57.00

SAR Peak: 0.63W/kg

SAR 10g (W/Kg)	0.040789
SAR 1g (W/Kg)	0.076664

Z (mm)	0.00	4.00	9.00	14.00	19.00
SAR (W/Kg)	0.1273	0.0804	0.0441	0.0246	0.0146



3D screen shot	Hot spot position
	

Plot 15: LTE Band12, 10MHz,Right Cheek, Middle

Type: Phone measurement

Date of measurement: 02/19/2020

Measurement duration: 22 minutes 31 seconds

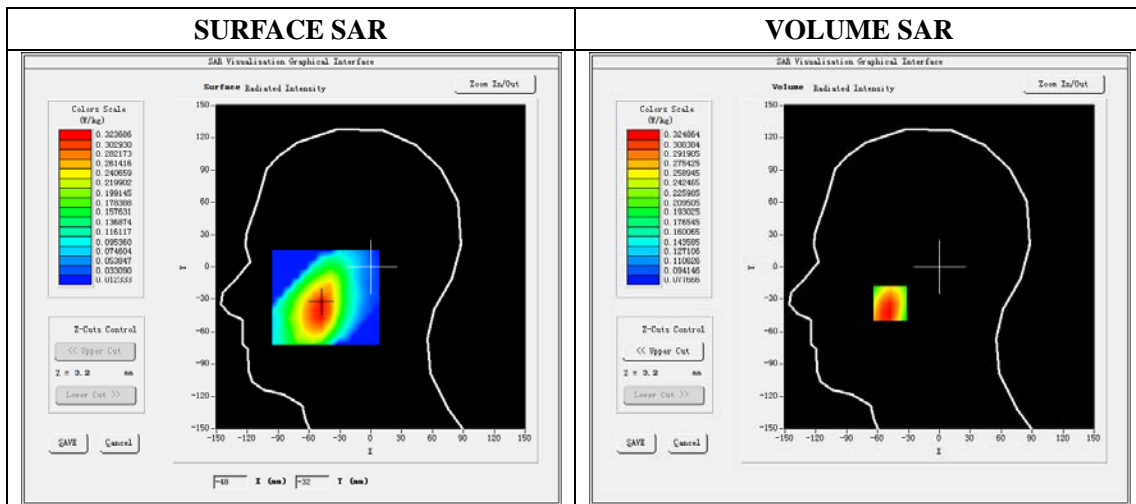
Mobile Phone IMEI number: --

A. Experimental conditions.

Area Scan	dx=8mm dy=8mm
ZoomScan	5x5x7,dx=8mm dy=8mm dz=5mm
Phantom	Validation plane
Device Position	Right Cheek
Band	LTE Band 12
Channels	23095
Signal	LTE (Duty cycle: 1:1)

B. SAR Measurement Results

E-Field Probe	SATIMO SN_41/18_EPG0330
Frequency (MHz)	707.5
Relative permittivity (real part)	41.88
Relative permittivity (imaginary)	22.56
Conductivity (S/m)	0.94
Variation (%)	-4.02
ConvF:	1.54

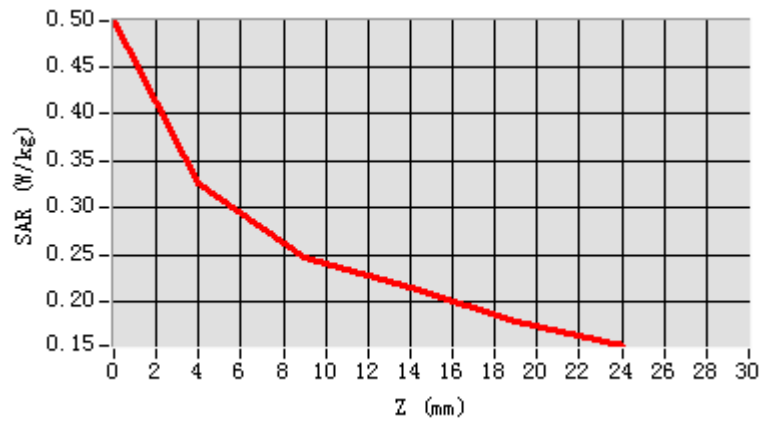


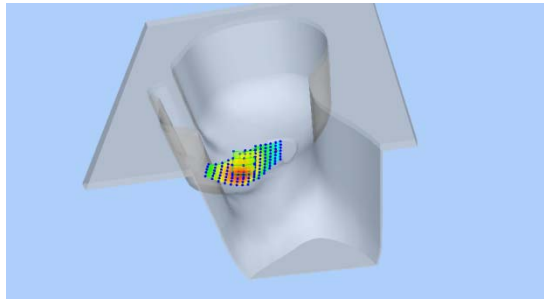
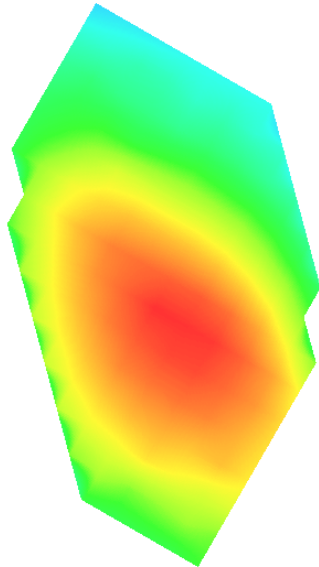
Maximum location: X=-48.00, Y=-34.00

SAR Peak: 0.40 W/kg

SAR 10g (W/Kg)	0.248718
SAR 1g (W/Kg)	0.324988

Z (mm)	0.00	4.00	9.00	14.00	19.00
SAR (W/Kg)	0.4987	0.3249	0.2465	0.2147	0.1780



3D screen shot	Hot spot position
	

Plot 16: LTE Band12, 10MHz, Back, Middle,10mm

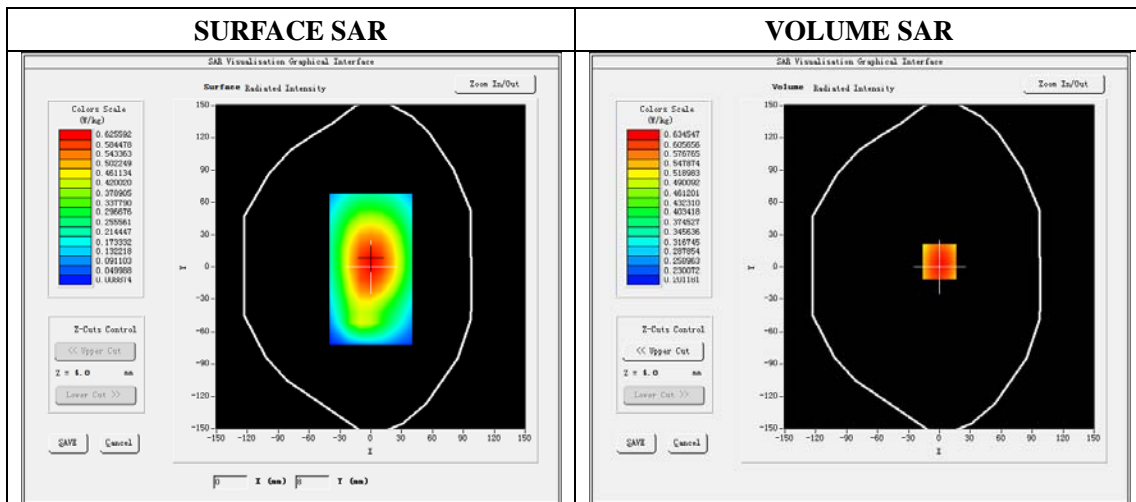
Type: Phone measurement
 Date of measurement: 02/19/2020
 Measurement duration: 22 minutes 33 seconds
 Mobile Phone IMEI number: --

A. Experimental conditions.

Area Scan	dx=8mm dy=8mm
ZoomScan	5x5x7,dx=8mm dy=8mm dz=5mm
Phantom	Validation plane
Device Position	Back
Band	LTE Band 12
Channels	23095
Signal	LTE (Duty cycle: 1:1)

B. SAR Measurement Results

E-Field Probe	SATIMO SN_41/18_EPG0330
Frequency (MHz)	707.5
Relative permittivity (real part)	55.61
Relative permittivity (imaginary)	23.04
Conductivity (S/m)	0.96
Variation (%)	-0.40
ConvF:	1.59

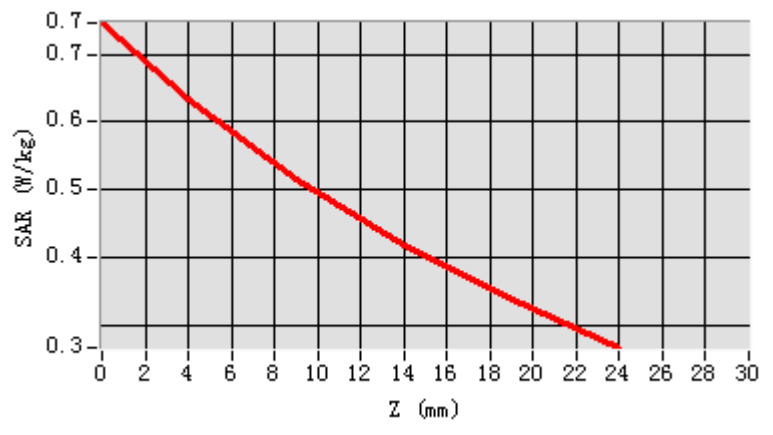


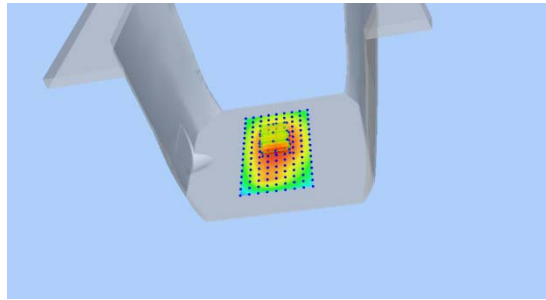
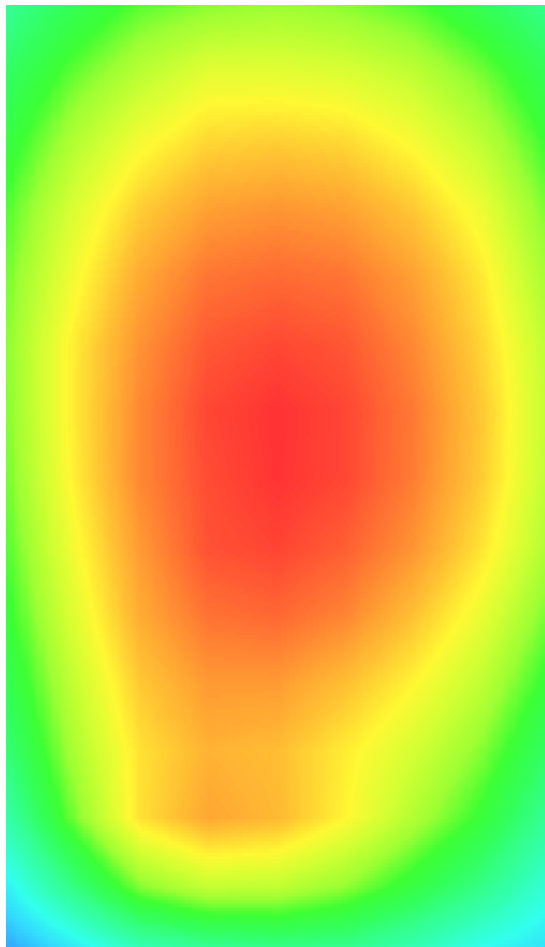
Maximum location: X=0.00, Y=5.00

SAR Peak: 0.75W/kg

SAR 10g (W/Kg)	0.485931
SAR 1g (W/Kg)	0.629042

Z (mm)	0.00	4.00	9.00	14.00	19.00
SAR (W/Kg)	0.7458	0.6345	0.5162	0.4182	0.3370



3D screen shot	Hot spot position
	

Plot 17: LTE Band13, 10MHz,Right Cheek, Middle

Type: Phone measurement

Date of measurement: 02/19/2020

Measurement duration: 22 minutes 31 seconds

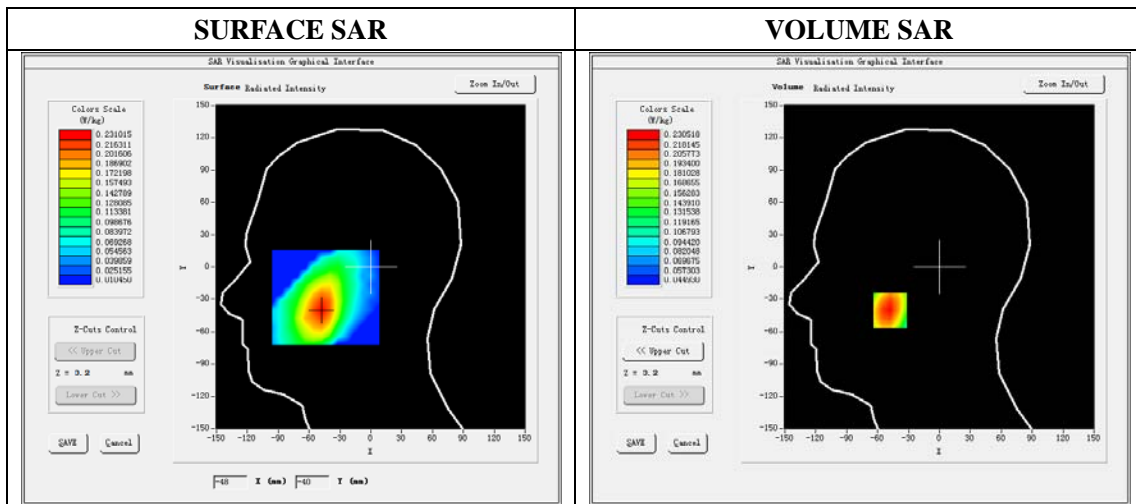
Mobile Phone IMEI number: --

A. Experimental conditions.

Area Scan	dx=8mm dy=8mm
ZoomScan	5x5x7,dx=8mm dy=8mm dz=5mm
Phantom	Validation plane
Device Position	Right Cheek
Band	LTE Band 13
Channels	23230
Signal	LTE (Duty cycle: 1:1)

B. SAR Measurement Results

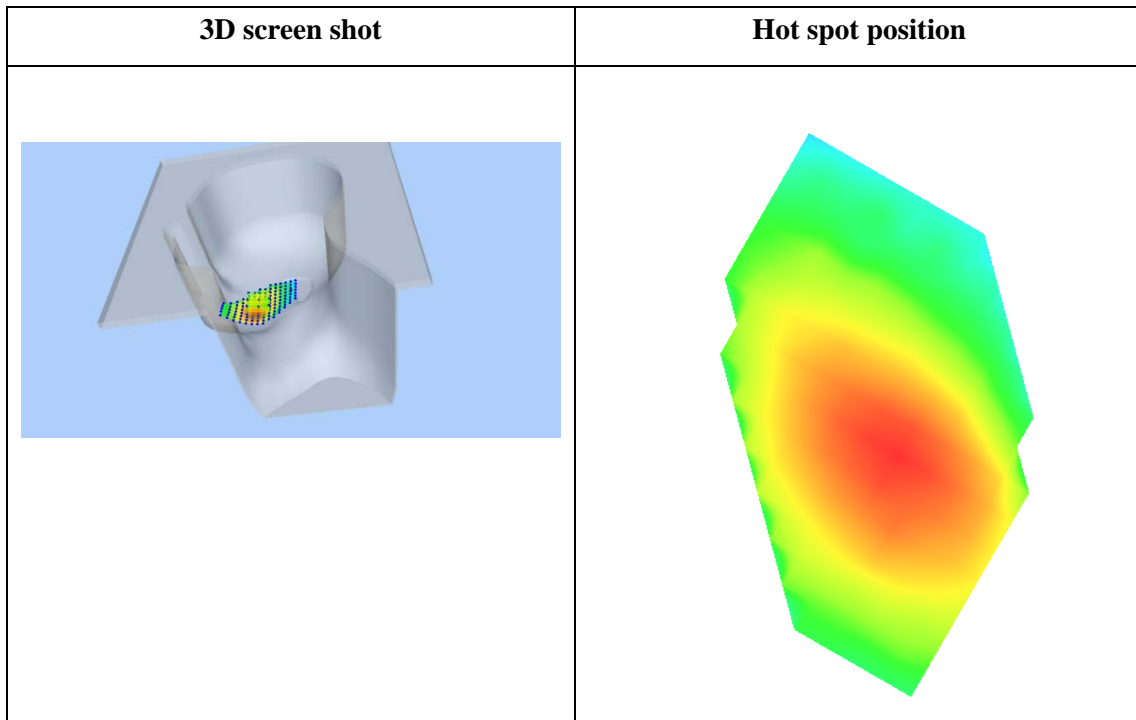
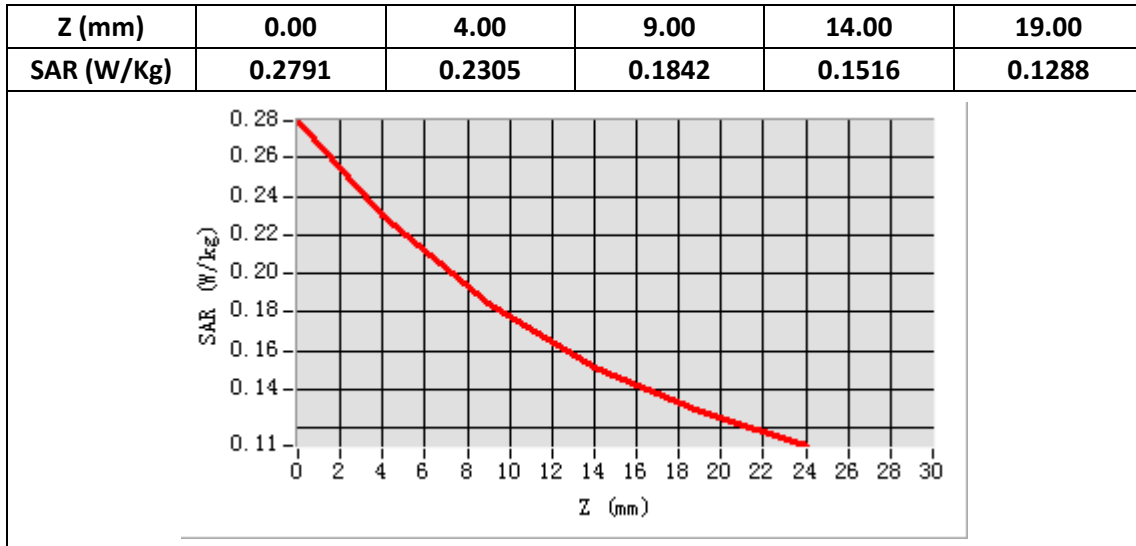
E-Field Probe	SATIMO SN_41/18_EPG0330
Frequency (MHz)	782
Relative permittivity (real part)	41.88
Relative permittivity (imaginary)	22.56
Conductivity (S/m)	0.94
Variation (%)	-4.16
ConvF:	1.54



Maximum location: X=-48.00, Y=-40.00

SAR Peak: 0.28 W/kg

SAR 10g (W/Kg)	0.172937
SAR 1g (W/Kg)	0.229769



Plot 18: LTE Band13, 10MHz, Back, Middle,10mm

Type: Phone measurement

Date of measurement: 02/19/2020

Measurement duration: 22 minutes 33 seconds

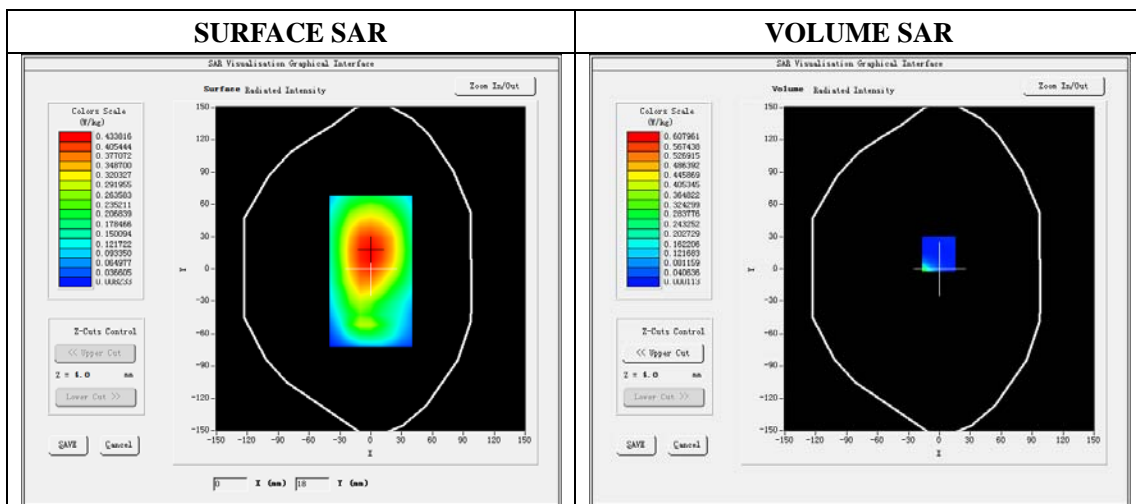
Mobile Phone IMEI number: --

A. Experimental conditions.

Area Scan	dx=8mm dy=8mm
ZoomScan	5x5x7,dx=8mm dy=8mm dz=5mm
Phantom	Validation plane
Device Position	Back
Band	LTE Band 13
Channels	23230
Signal	LTE (Duty cycle: 1:1)

B. SAR Measurement Results

E-Field Probe	SATIMO SN_41/18_EPG0330
Frequency (MHz)	782
Relative permittivity (real part)	55.61
Relative permittivity (imaginary)	23.04
Conductivity (S/m)	0.96
Variation (%)	-2.76
ConvF:	1.59

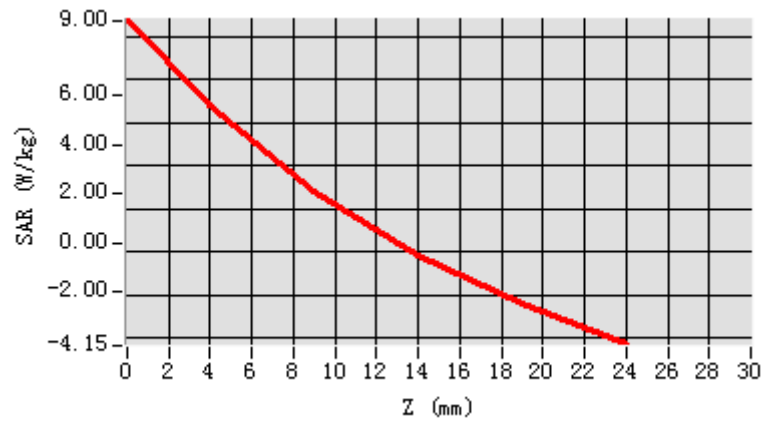


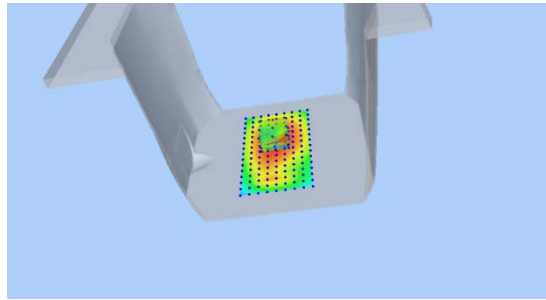

Maximum location: X=-1.00, Y=14.00

SAR Peak: 0.45W/kg

SAR 10g (W/Kg)	0.162843
SAR 1g (W/Kg)	0.128753

Z (mm)	0.00	4.00	9.00	14.00	19.00
SAR (W/Kg)	-4.1526	0.6080	0.0496	0.1543	4.0000



3D screen shot	Hot spot position
	

Plot 19: LTE Band17, 10MHz,Right Check, Middle

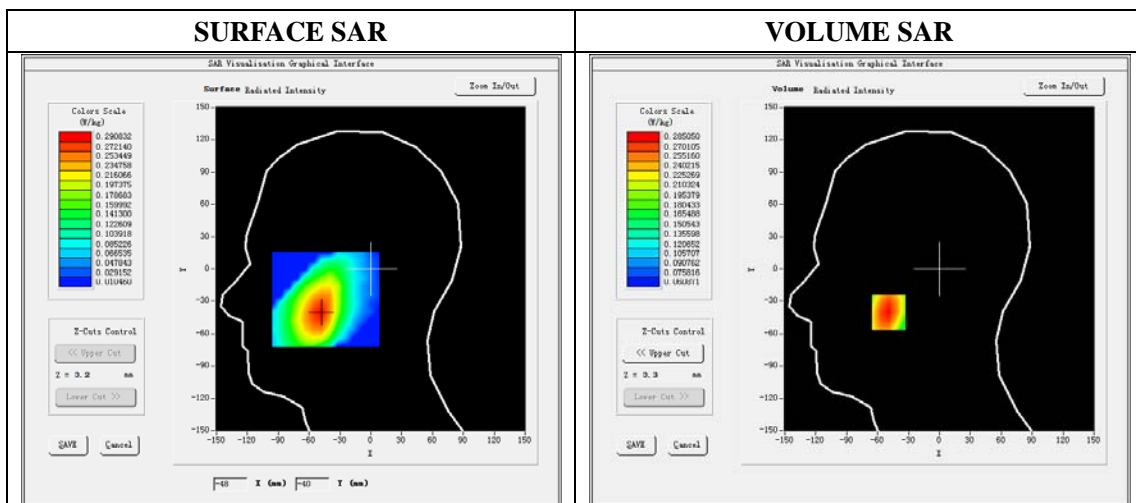
Type: Phone measurement
 Date of measurement: 02/19/2020
 Measurement duration: 22 minutes 38 seconds
 Mobile Phone IMEI number: --

A. Experimental conditions.

Area Scan	dx=8mm dy=8mm
ZoomScan	5x5x7,dx=8mm dy=8mm dz=5mm
Phantom	Validation plane
Device Position	Right Check
Band	LTE Band 17
Channels	23790
Signal	LTE (Duty cycle: 1:1)

B. SAR Measurement Results

E-Field Probe	SATIMO SN_41/18_EPG0330
Frequency (MHz)	710
Relative permittivity (real part)	41.88
Relative permittivity (imaginary)	22.56
Conductivity (S/m)	0.94
Variation (%)	-3.95
ConvF:	1.54

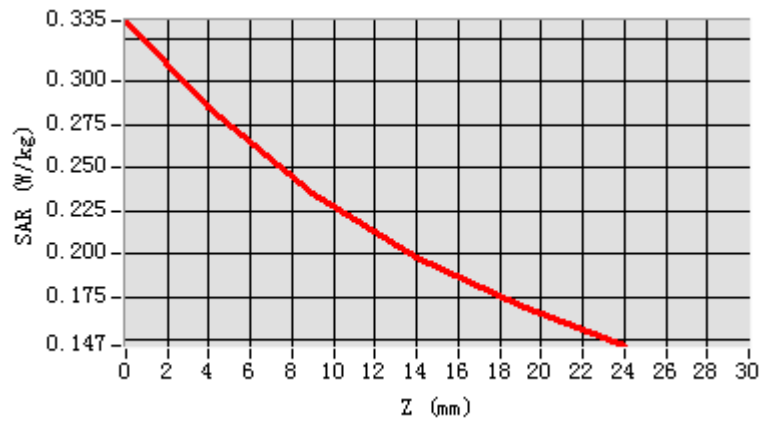


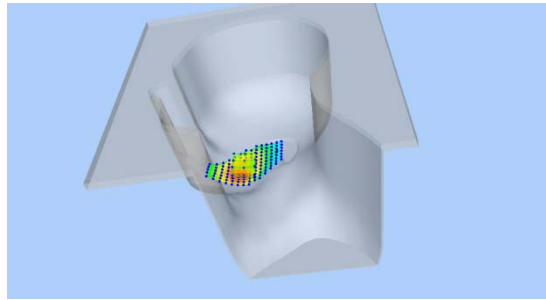
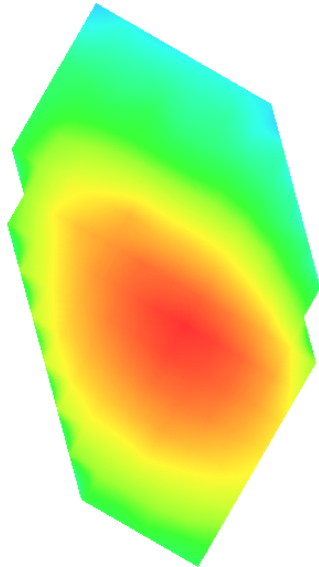
Maximum location: X=-49.00, Y=-40.00

SAR Peak: 0.34 W/kg

SAR 10g (W/Kg)	0.216653
SAR 1g (W/Kg)	0.276276

Z (mm)	0.00	4.00	9.00	14.00	19.00
SAR (W/Kg)	0.3352	0.2851	0.2353	0.1980	0.1699



3D screen shot	Hot spot position
	

Plot 20: LTE Band 17, 10MHz, Back, Middle,10mm

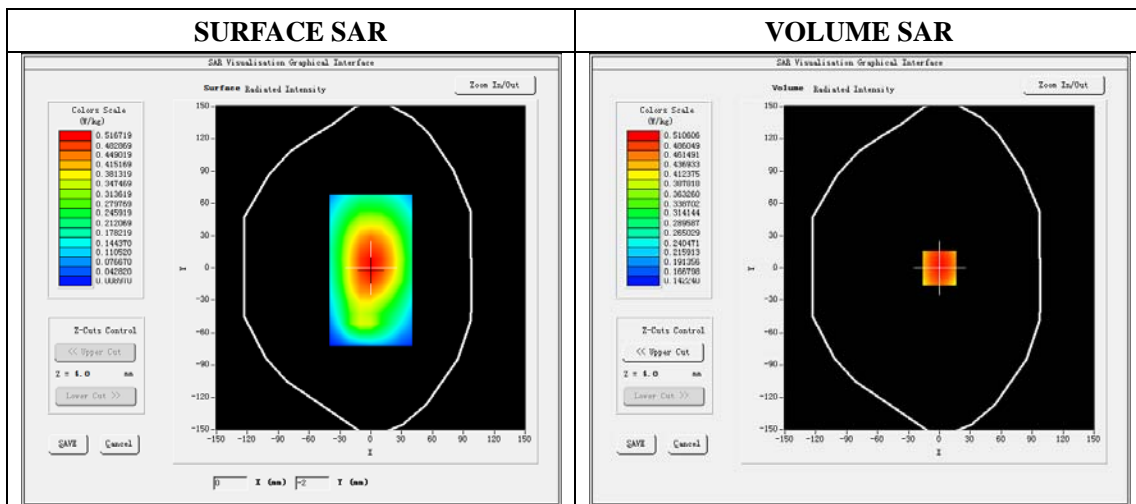
Type: Phone measurement
 Date of measurement: 02/19/2020
 Measurement duration: 22 minutes 39 seconds
 Mobile Phone IMEI number: --

A. Experimental conditions.

Area Scan	dx=8mm dy=8mm
ZoomScan	5x5x7,dx=8mm dy=8mm dz=5mm
Phantom	Validation plane
Device Position	Back
Band	LTE Band 17
Channels	23790
Signal	LTE (Duty cycle: 1:1)

B. SAR Measurement Results

E-Field Probe	SATIMO SN_41/18_EPG0330
Frequency (MHz)	710
Relative permittivity (real part)	55.61
Relative permittivity (imaginary)	23.04
Conductivity (S/m)	0.96
Variation (%)	-0.26
ConvF:	1.59

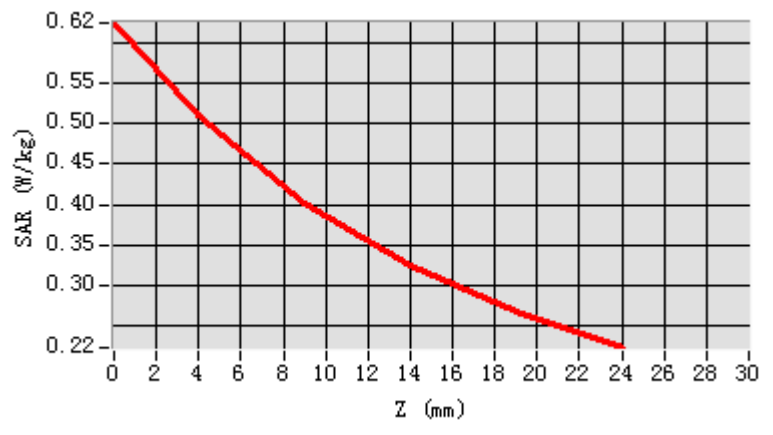


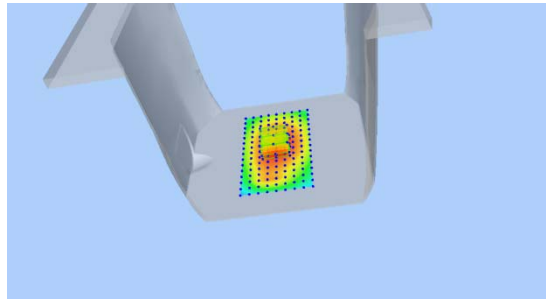
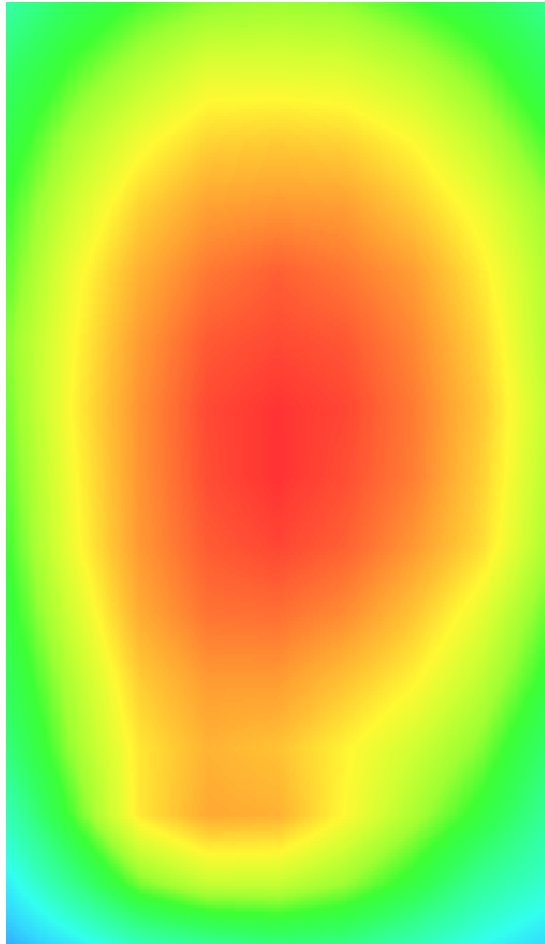
Maximum location: X=0.00, Y=0.00

SAR Peak: 0.62W/kg

SAR 10g (W/Kg)	0.382208
SAR 1g (W/Kg)	0.495664

Z (mm)	0.00	4.00	9.00	14.00	19.00
SAR (W/Kg)	0.6235	0.5106	0.4021	0.3240	0.2679



3D screen shot	Hot spot position
	

Plot 21: Wi-Fi 802.11b Left Cheek, Middle

Type: Phone measurement

Date of measurement: 02/24/2020

Measurement duration: 22 minutes 24 seconds

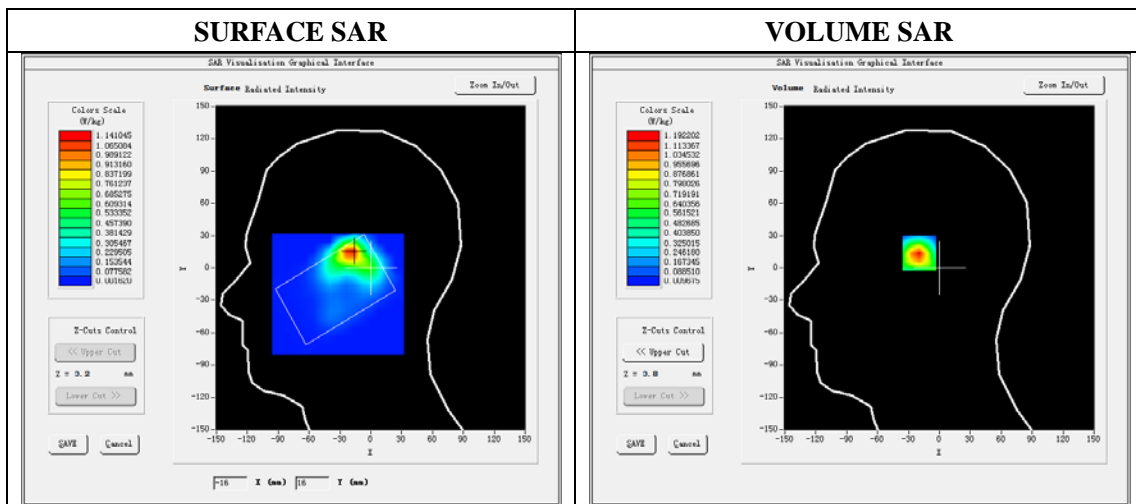
Mobile Phone IMEI number: --

A. Experimental conditions.

Area Scan	dx=5mm,dy=5mm
ZoomScan	7x7x8,dx=5mm dy=5mm dz=4mm
Phantom	Validation plane
Device Position	Left Cheek
Band	WIFI
Channels	6
Signal	DSSS (Duty cycle: 1:1)

B. SAR Measurement Results

E-Field Probe	SATIMO SN_41/18_EPG0330
Frequency (MHz)	2437
Relative permittivity (real part)	39.30
Relative permittivity (imaginary)	13.37
Conductivity (S/m)	1.82
Variation (%)	0.22
ConvF:	2.05

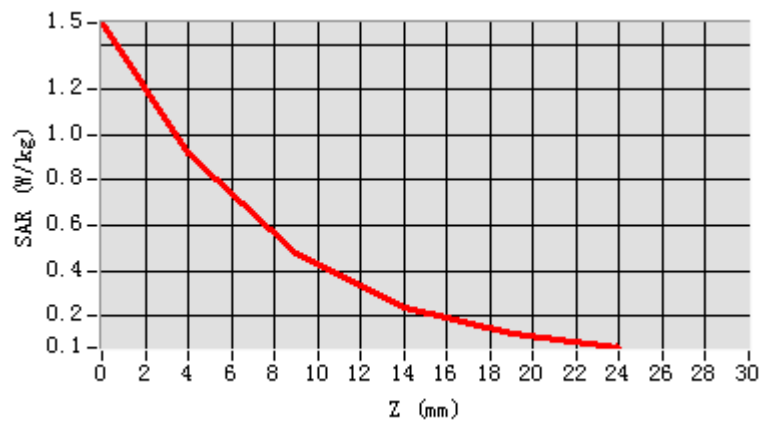


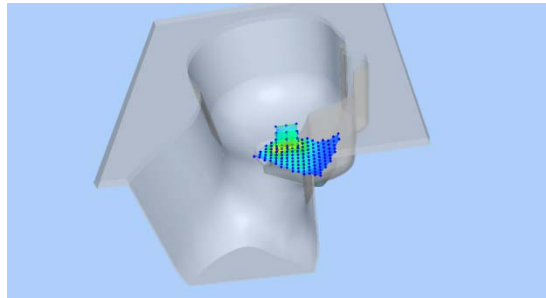
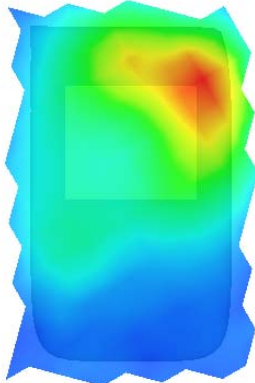
Maximum location: X=-17.00 Y=15.00

SAR Peak:1.52 W/kg

SAR 10g (W/Kg)	0.399065
SAR 1g (W/Kg)	0.857402

Z (mm)	0.00	4.00	8.00	12.00	16.00
SAR (W/Kg)	1.4954	0.9148	0.4731	0.2396	0.1235



3D screen shot	Hot spot position
	

Plot 22: Wi-Fi 802.11b, Back ,Middle, 10mm

Type: Phone measurement

Date of measurement: 02/24/2020

Measurement duration: 22 minutes 26 seconds

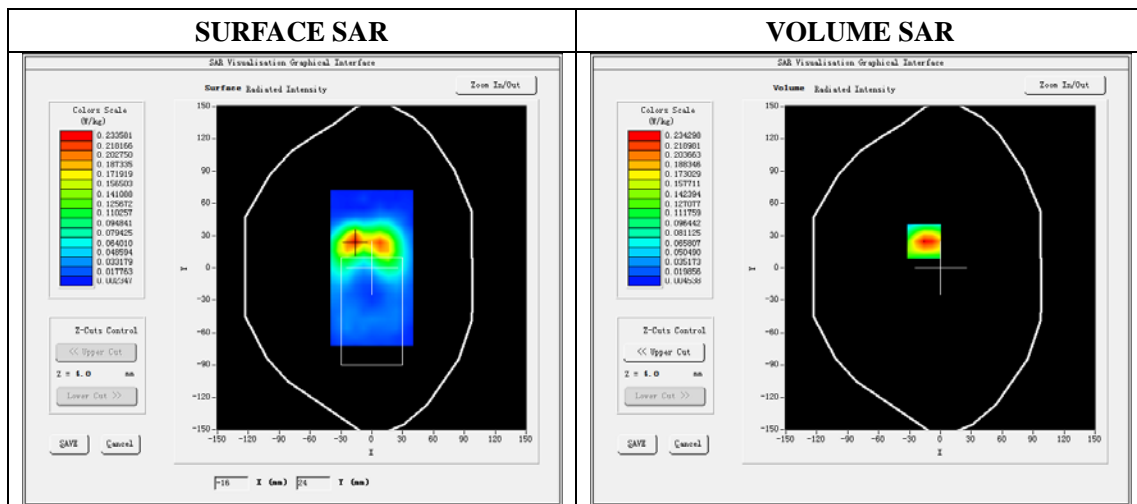
Mobile Phone IMEI number: --

A. Experimental conditions.

Area Scan	dx=5mm,dy=5mm
ZoomScan	7x7x8,dx=5mm dy=5mm dz=4mm
Phantom	Validation plane
Device Position	Back
Band	WIFI
Channels	6
Signal	DSSS (Duty cycle: 1:1)

B. SAR Measurement Results

E-Field Probe	SATIMO SN_41/18_EPG0330
Frequency (MHz)	2437
Relative permittivity (real part)	52.74
Relative permittivity (imaginary)	14.47
Conductivity (S/m)	1.97
Variation (%)	-3.36
ConvF:	2.12



Maximum location: X=-16.00 Y=25.00

SAR Peak: 0.43 W/kg

SAR 10g (W/Kg)	0.107594
SAR 1g (W/Kg)	0.223880

