

Appendix B: SAR Measurement results Plots

Plot	Frequency/Mode	Testing Position and Channel	Test Date
1	GSM850	Left Cheek Middle	2019/01/22
2	GSM850/GPRS2Tx	Body Back, Middle ,10mm	2019/01/22
3	GSM1900	Left Cheek Middle	2019/01/24
4	GSM1900/GPRS2Tx	Body Back Middle ,10mm	2019/01/24
5	WCDMA850	Left Cheek Middle	2019/01/22
6	WCDMA850	Body Back, Middle ,10mm	2019/01/22
7	WCDMA1900	Right Cheek Middle	2019/01/24
8	WCDMA1900	Body Back, Middle ,10mm	2019/01/24
9	WCDMA1700	Left Cheek Middle	2019/01/23
10	WCDMA1700	Body Back, Middle ,10mm	2019/01/23
11	LTE Band2	Left Cheek Middle	2019/01/24
12	LTE Band2	Body Back, Middle ,10mm	2019/01/24
13	LTE Band4	Right Cheek Middle	2019/01/23
14	LTE Band4	Body Back, Middle ,10mm	2019/01/23
15	LTE Band5	Right Cheek Middle	2019/01/22
16	LTE Band5	Body Back, Middle ,10mm	2019/01/22
17	LTE Band7	Left Cheek Middle	2019/01/26
18	LTE Band7	Body Edge C, Middle ,10mm	2019/01/26
19	WIFI 2.4G 802 11b	Left Cheek Middle	2019/01/25



20	WIFI 2.4G 802 11b	Edge A Middle ,10mm	2019/01/25
21	Bluetooth	Left Cheek Middle	2019/01/25
22	Bluetooth	Body Back, Middle ,10mm	2019/01/25

Plot 1: GSM850, Left Cheek, Middle

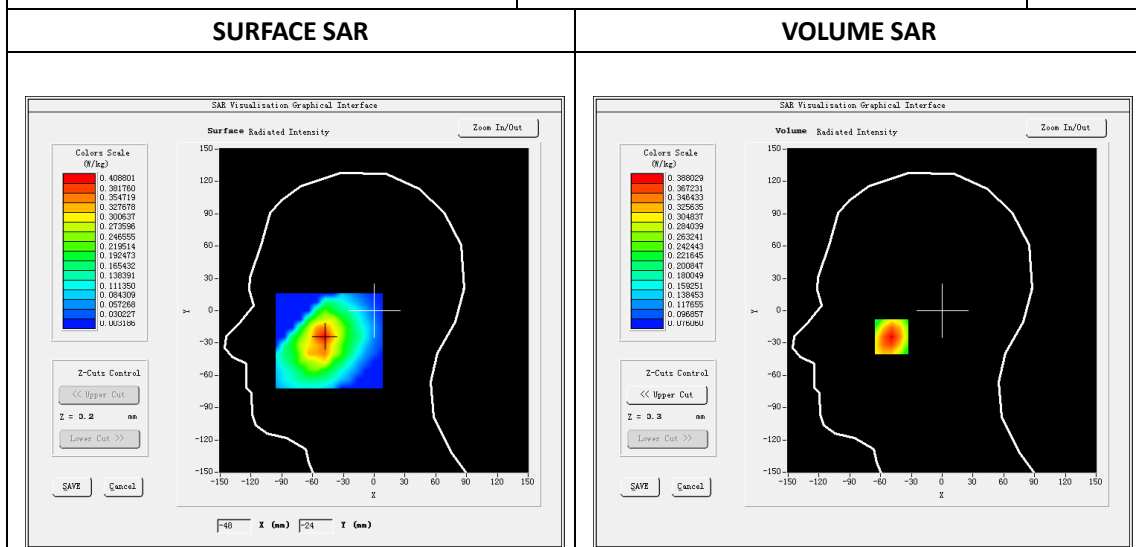
Type: Phone measurement
 Date of measurement: 01/22/2019
 Measurement duration: 22 minutes 25 seconds
 Mobile Phone IMEI number: --

A. Experimental conditions.

Area Scan	dx=8mm dy=8mm
ZoomScan	5x5x7,dx=8mm dy=8mm dz=5mm
Phantom	Validation plane
Device Position	Left Cheek
Band	GSM850
Channels	190
Signal	GSM (Duty cycle: 1:8.3)

B. SAR Measurement Results

E-Field Probe	SATIMO SN_04/13_EP166
Frequency (MHz)	836.6
Relative permittivity (real part)	41.44
Relative permittivity (imaginary part)	18.27
Conductivity (S/m)	0.87
Variation (%)	1.11
ConvF:	5.85

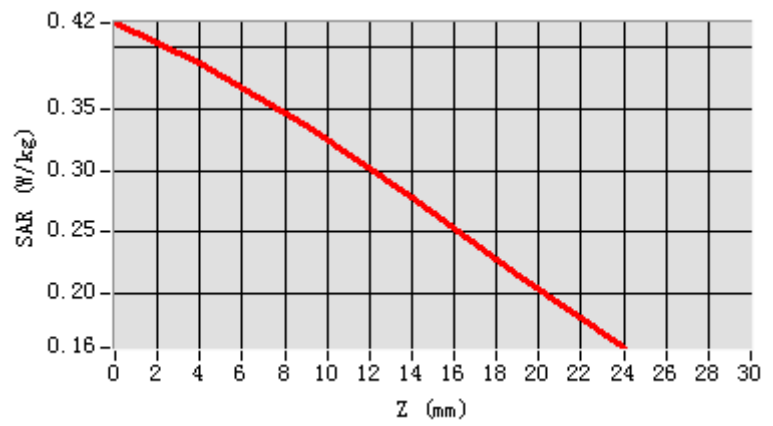


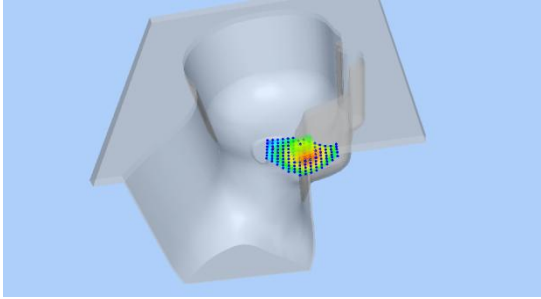
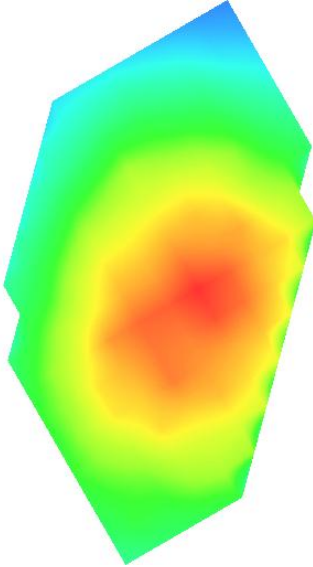
Maximum location: X=-49.00, Y=-24.00

SAR Peak: 0.42W/kg

SAR 10g (W/Kg)	0.284877
SAR 1g (W/Kg)	0.378727

Z (mm)	0.00	4.00	9.00	14.00	19.00
SAR (W/Kg)	0.4204	0.3880	0.3371	0.2774	0.2141



3D screen shot	Hot spot position
	

Plot 2: GPRS850, Back, Middle,10mm

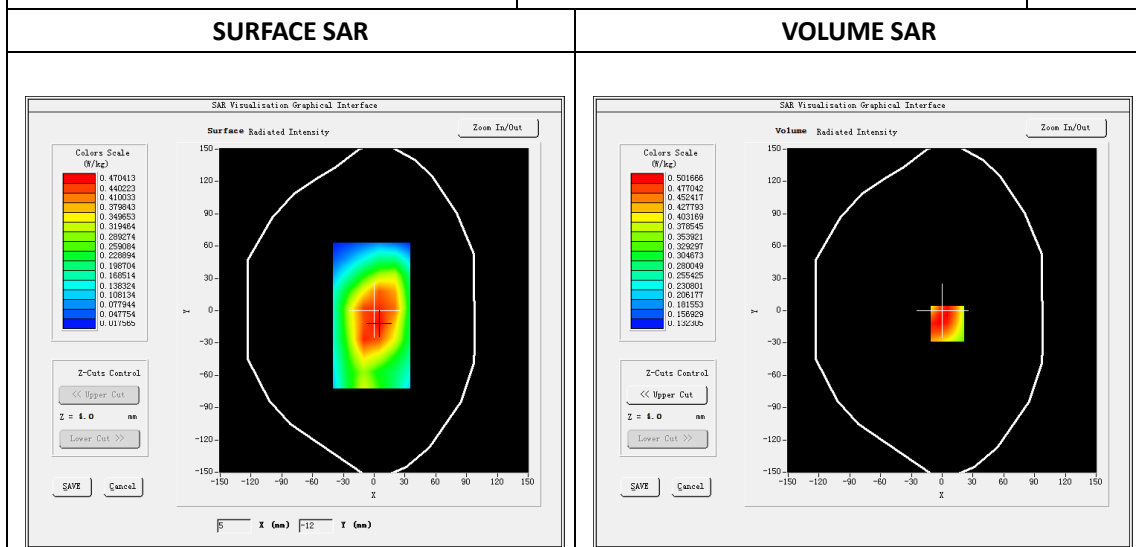
Type: Phone measurement
 Date of measurement: 01/22/2019
 Measurement duration: 22 minutes 15 seconds
 Mobile Phone IMEI number: --

A. Experimental conditions.

Area Scan	dx=8mm dy=8mm
ZoomScan	5x5x7,dx=8mm dy=8mm dz=5mm
Phantom	Validation plane
Device Position	Back
Band	GSPRS850_2Tx
Channels	190
Signal	GPRS(Duty cycle: 1:4)

B. SAR Measurement Results

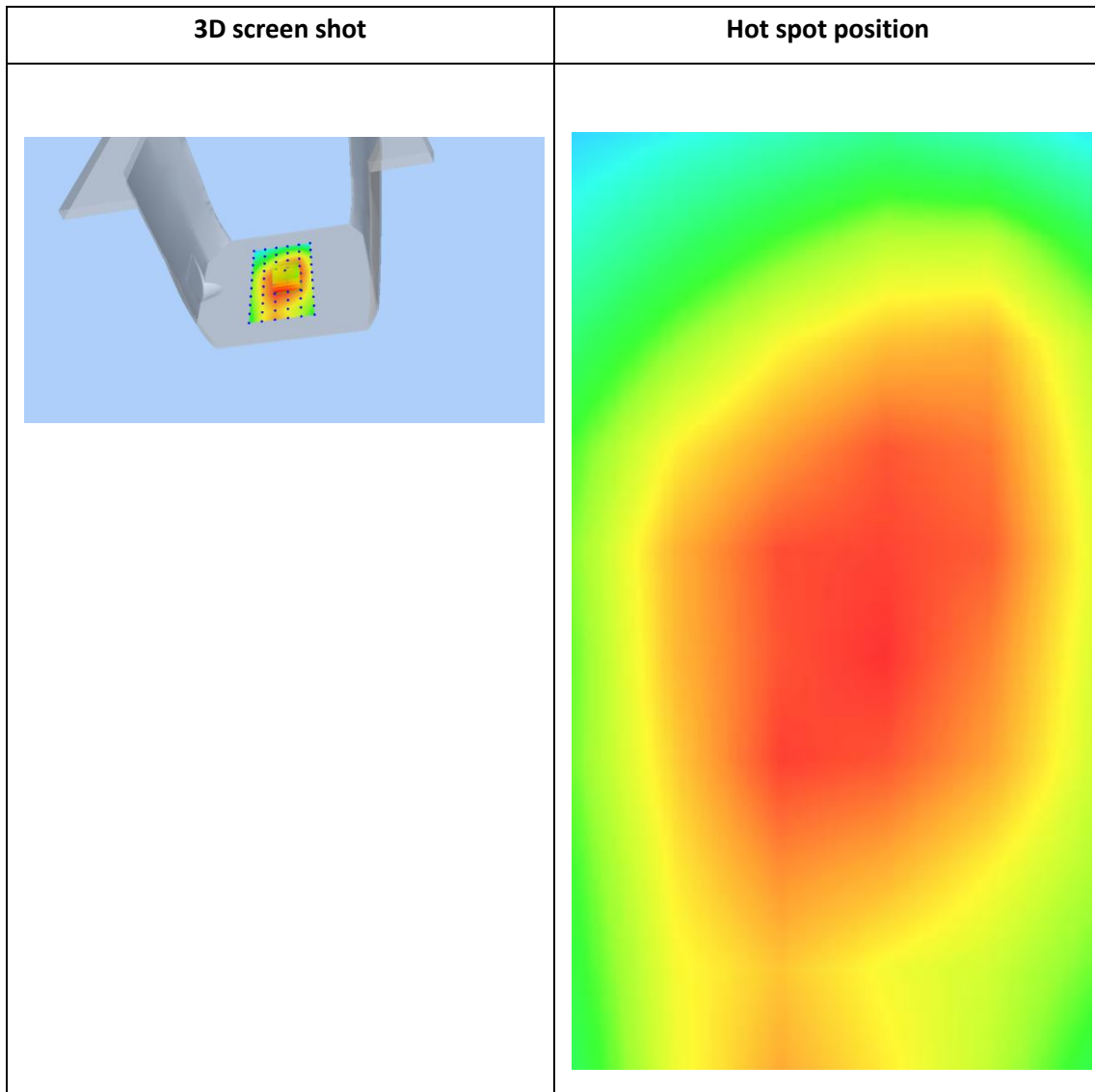
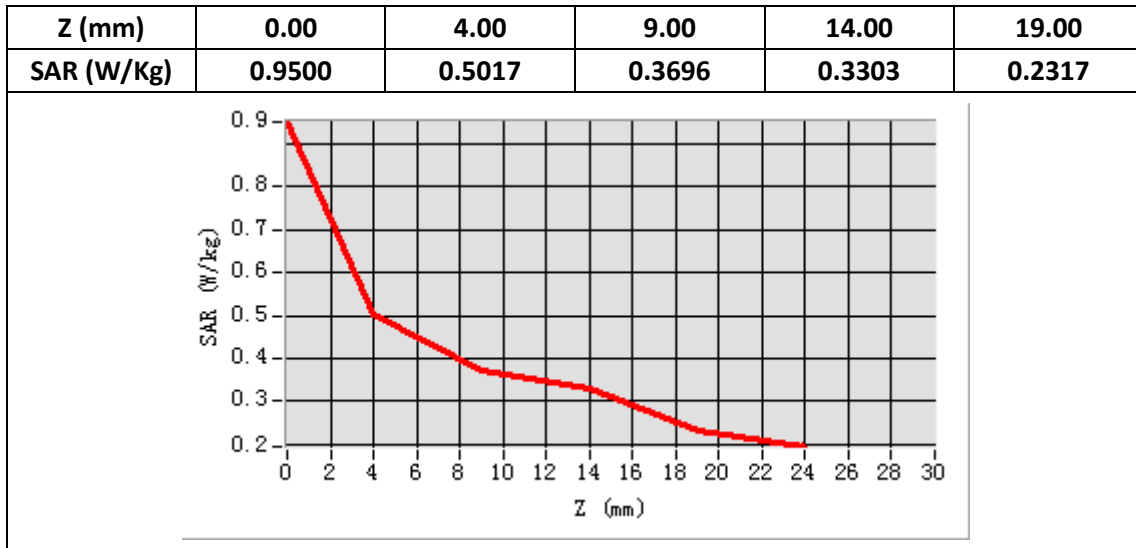
E-Field Probe	SATIMO SN_04/13_EP166
Frequency (MHz)	836.6
Relative permittivity (real part)	55.18
Relative permittivity (imaginary part)	21.12
Conductivity (S/m)	0.98
Variation (%)	-1.34
ConvF:	6.17



Maximum location: X=5.00, Y=-12.00

SAR Peak: 0.60 W/kg

SAR 10g (W/Kg)	0.379296
SAR 1g (W/Kg)	0.498679



Plot3: GSM1900, Left Cheek Middle

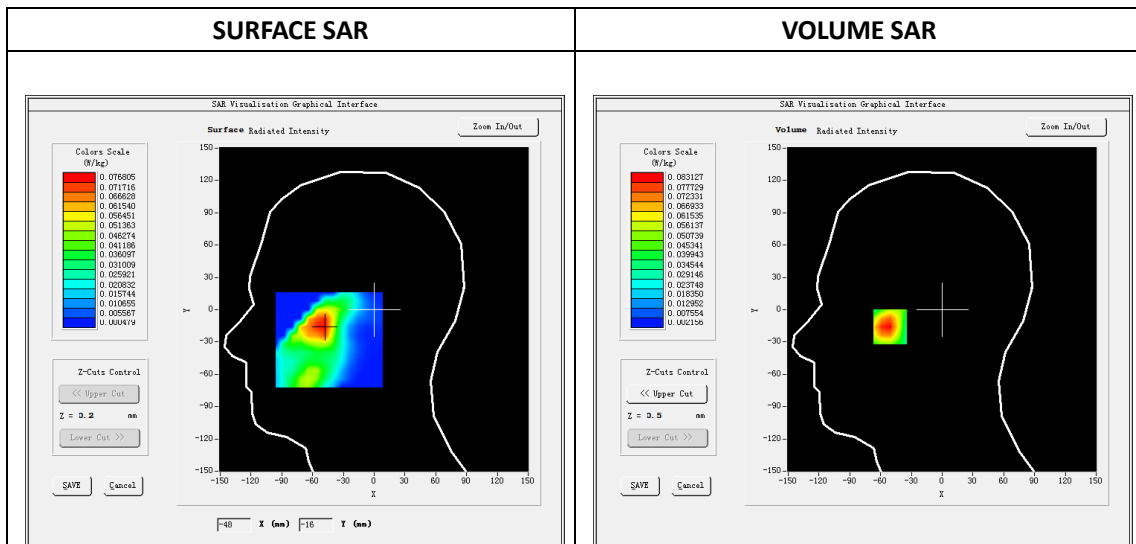
Type: Phone measurement
 Date of measurement: 01/24/2019
 Measurement duration: 22 minutes 31 seconds
 Mobile Phone IMEI number: --

A. Experimental conditions.

Area Scan	dx=8mm dy=8mm
Zoom Scan	5x5x7,dx=8mm dy=8mm dz=5mm
Phantom	Validation plane
Device Position	Left Cheek
Band	GSM1900
Channels	661
Signal	GSM (Duty cycle: 1:8.3)

B. SAR Measurement Results

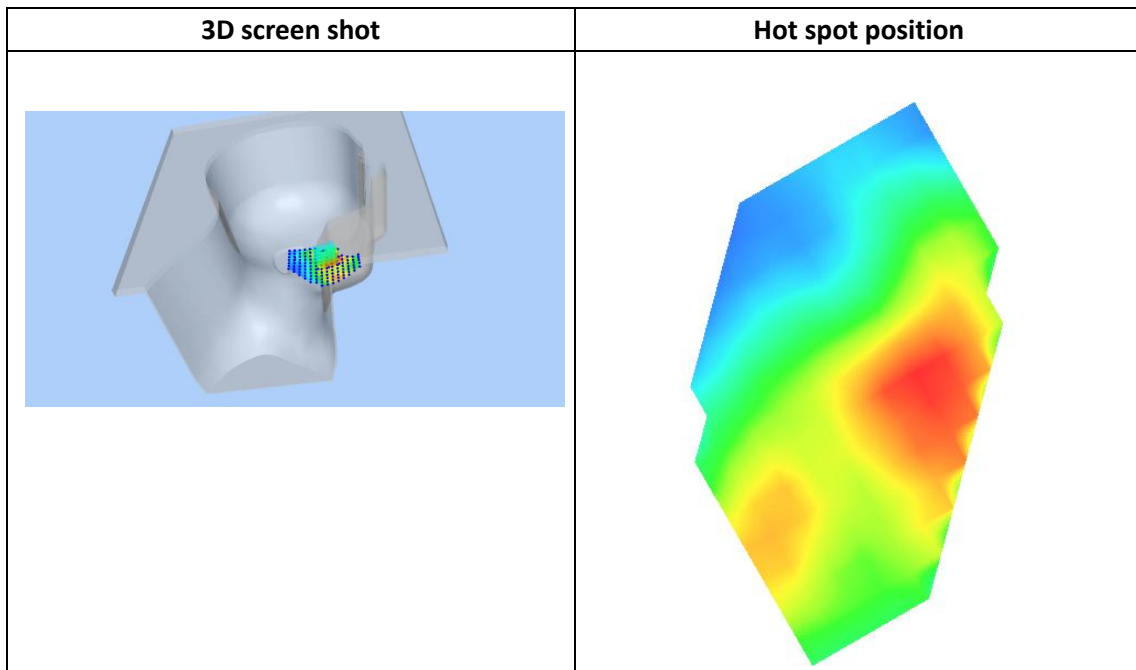
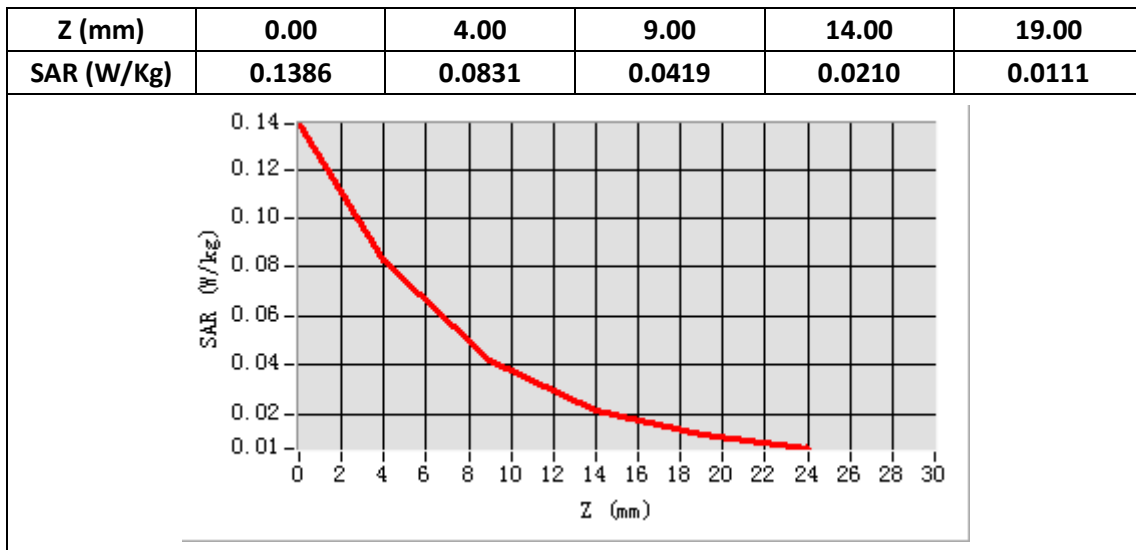
E-Field Probe	SATIMO SN_04/13_EP166
Frequency (MHz)	1880
Relative permittivity (real part)	40.55
Relative permittivity (imaginary part)	13.54
Conductivity (S/m)	1.45
Variation (%)	2.22
ConvF:	5.90



Maximum location: X=-5100, Y=-1.00

SAR Peak: 0.14 W/kg

SAR 10g (W/Kg)	0.041002
SAR 1g (W/Kg)	0.079671



Plot4: GPRS1900, Back Middle ,10mm

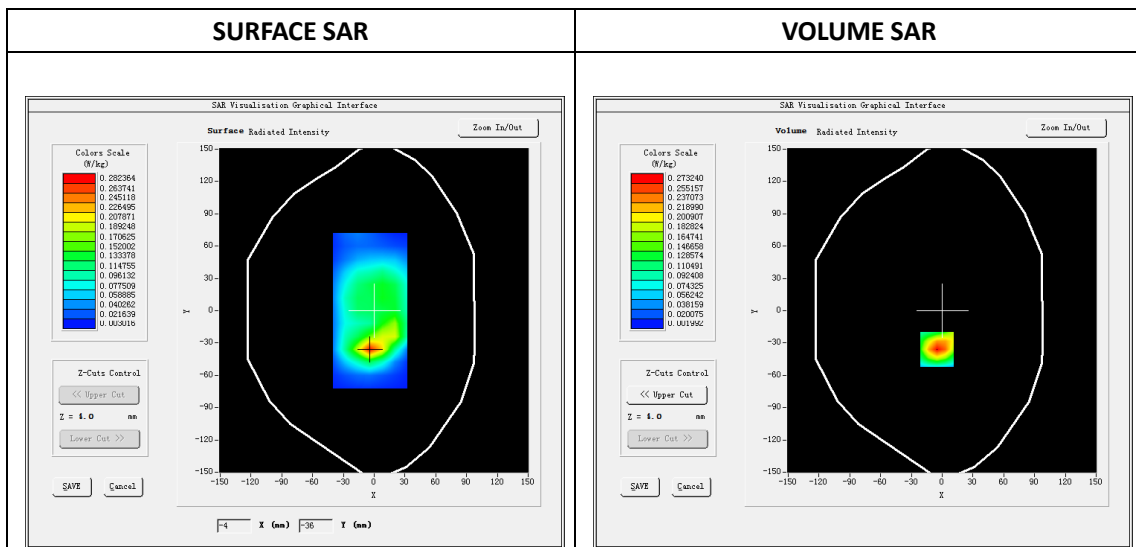
Type: Phone measurement
 Date of measurement: 01/24/2019
 Measurement duration: 22 minutes 35 seconds
 Mobile Phone IMEI number: --

A. Experimental conditions.

Area Scan	dx=8mm dy=8mm
Zoom Scan	5x5x7,dx=8mm dy=8mm dz=5mm
Phantom	Validation plane
Device Position	Back
Band	GPRS1900_2Tx
Channels	661
Signal	GPRS(Duty cycle: 1:4)

B. SAR Measurement Results

E-Field Probe	SATIMO SN_04/13_EP166
Frequency (MHz)	1880
Relative permittivity (real part)	53.36
Relative permittivity (imaginary part)	14.40
Conductivity (S/m)	1.52
Variation (%)	-4.34
ConvF:	6.10

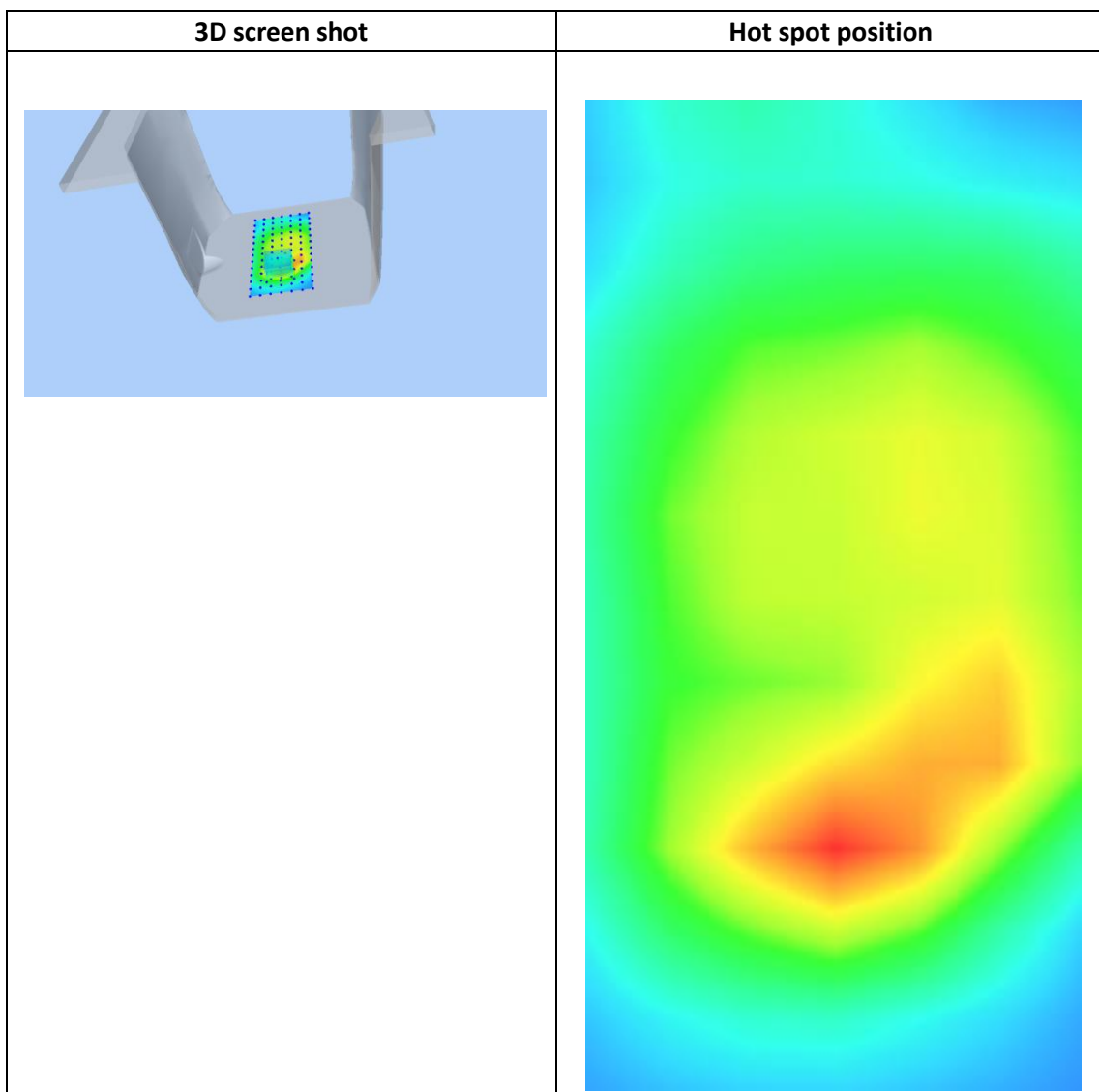
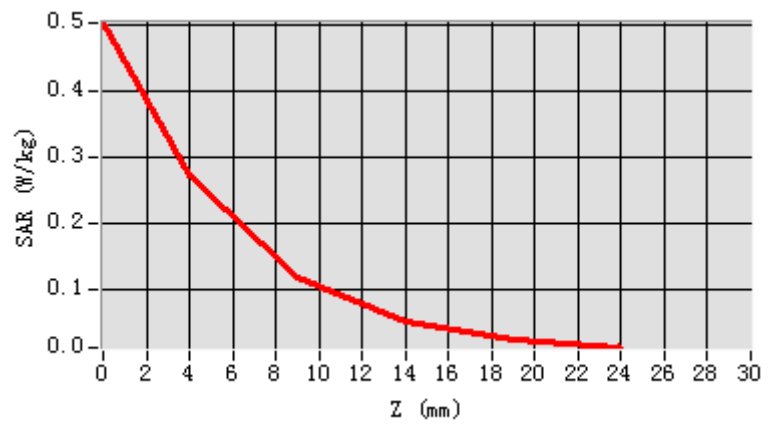


Maximum location: X=-5.00, Y=-36.00

SAR Peak: 0.51W/kg

SAR 10g (W/Kg)	0.118848
SAR 1g (W/Kg)	0.256220

Z (mm)	0.00	4.00	9.00	14.00	19.00
SAR (W/Kg)	0.5018	0.2732	0.1182	0.0501	0.0239



Plot 5: WCDMA850, Left Cheek, Middle

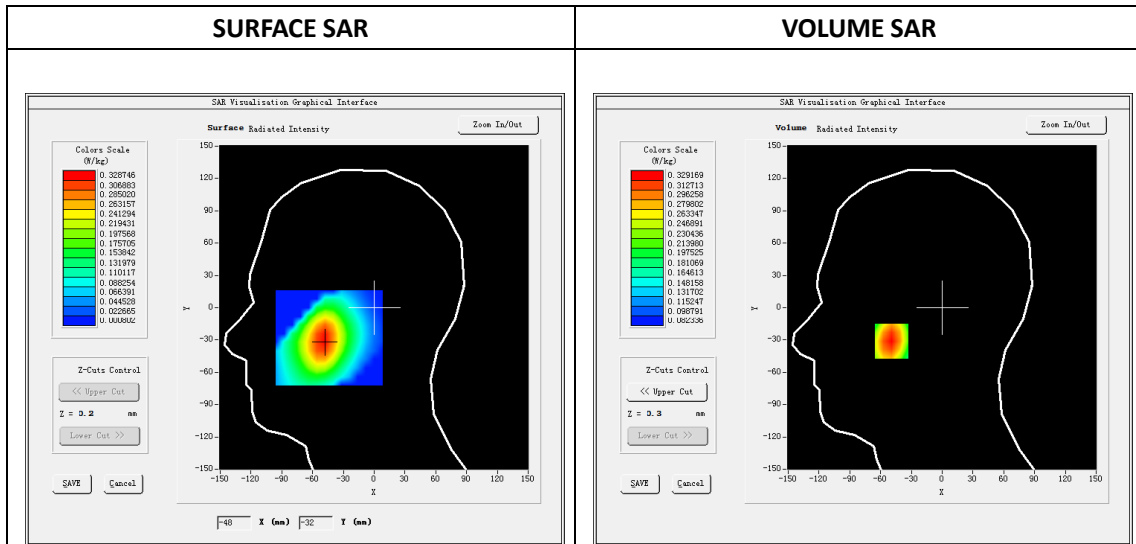
Type: Phone measurement
 Date of measurement: 01/22/2019
 Measurement duration: 22 minutes 26 seconds
 Mobile Phone IMEI number: --

A. Experimental conditions.

Area Scan	dx=8mm dy=8mm
ZoomScan	5x5x7,dx=8mm dy=8mm dz=5mm
Phantom	Validation plane
Device Position	Left Cheek
Band	Band5_WCDMA850
Channels	4183
Signal	WCDMA (Duty cycle: 1:1)

B. SAR Measurement Results

E-Field Probe	SATIMO SN_04/13_EP166
Frequency (MHz)	836.6
Relative permittivity (real part)	41.44
Relative permittivity (imaginary part)	18.27
Conductivity (S/m)	0.87
Variation (%)	2.72
ConvF:	5.85

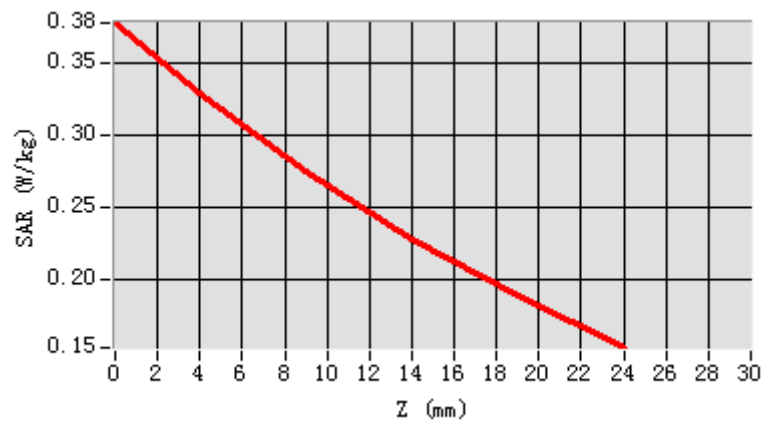


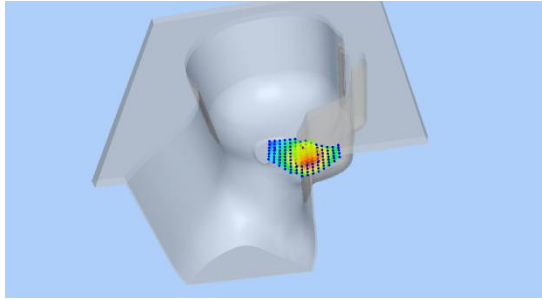
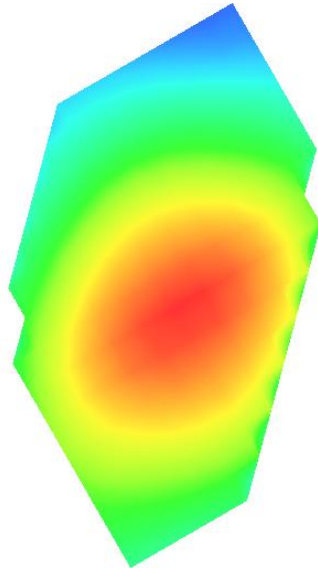
Maximum location: X=-49.00, Y=-31.00

SAR Peak: 0.38W/kg

SAR 10g (W/Kg)	0.246379
SAR 1g (W/Kg)	0.322330

Z (mm)	0.00	4.00	9.00	14.00	19.00
SAR (W/Kg)	0.3781	0.3292	0.2752	0.2286	0.1883



3D screen shot	Hot spot position
	

Plot 6: WCDMA850, BACK, Middle,10mm

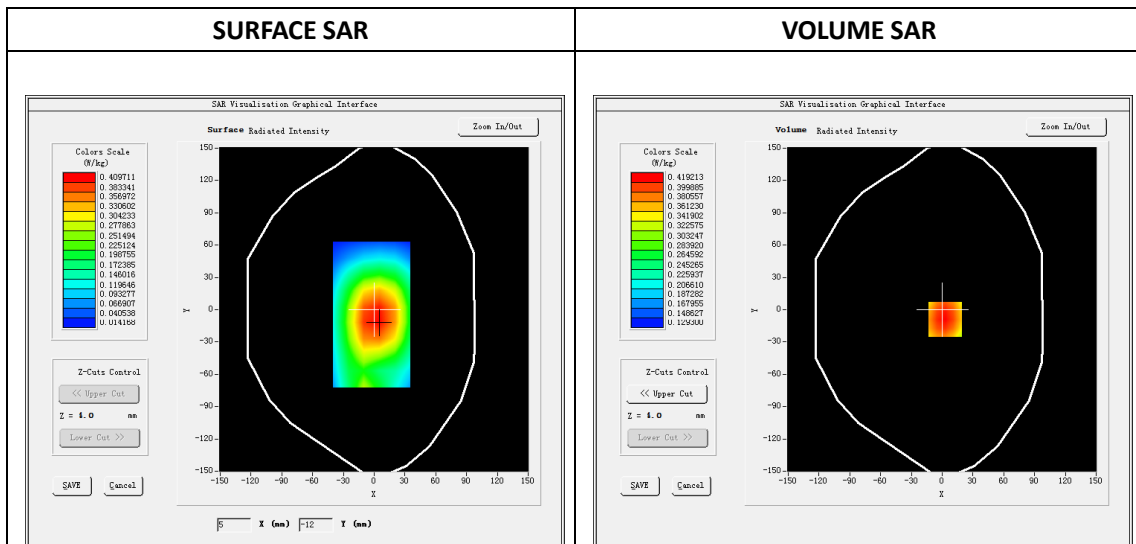
Type: Phone measurement
 Date of measurement: 01/22/2019
 Measurement duration: 22 minutes 26 seconds
 Mobile Phone IMEI number: --

A. Experimental conditions.

Area Scan	dx=8mm dy=8mm
ZoomScan	5x5x7,dx=8mm dy=8mm dz=5mm
Phantom	Validation plane
Device Position	Back
Band	Band5_WCDMA850
Channels	4183
Signal	WCDMA (Duty cycle: 1:1)

B. SAR Measurement Results

E-Field Probe	SATIMO SN_04/13_EP166
Frequency (MHz)	836.6
Relative permittivity (real part)	55.18
Relative permittivity (imaginary part)	21.12
Conductivity (S/m)	0.98
Variation (%)	-0.93
ConvF:	6.17

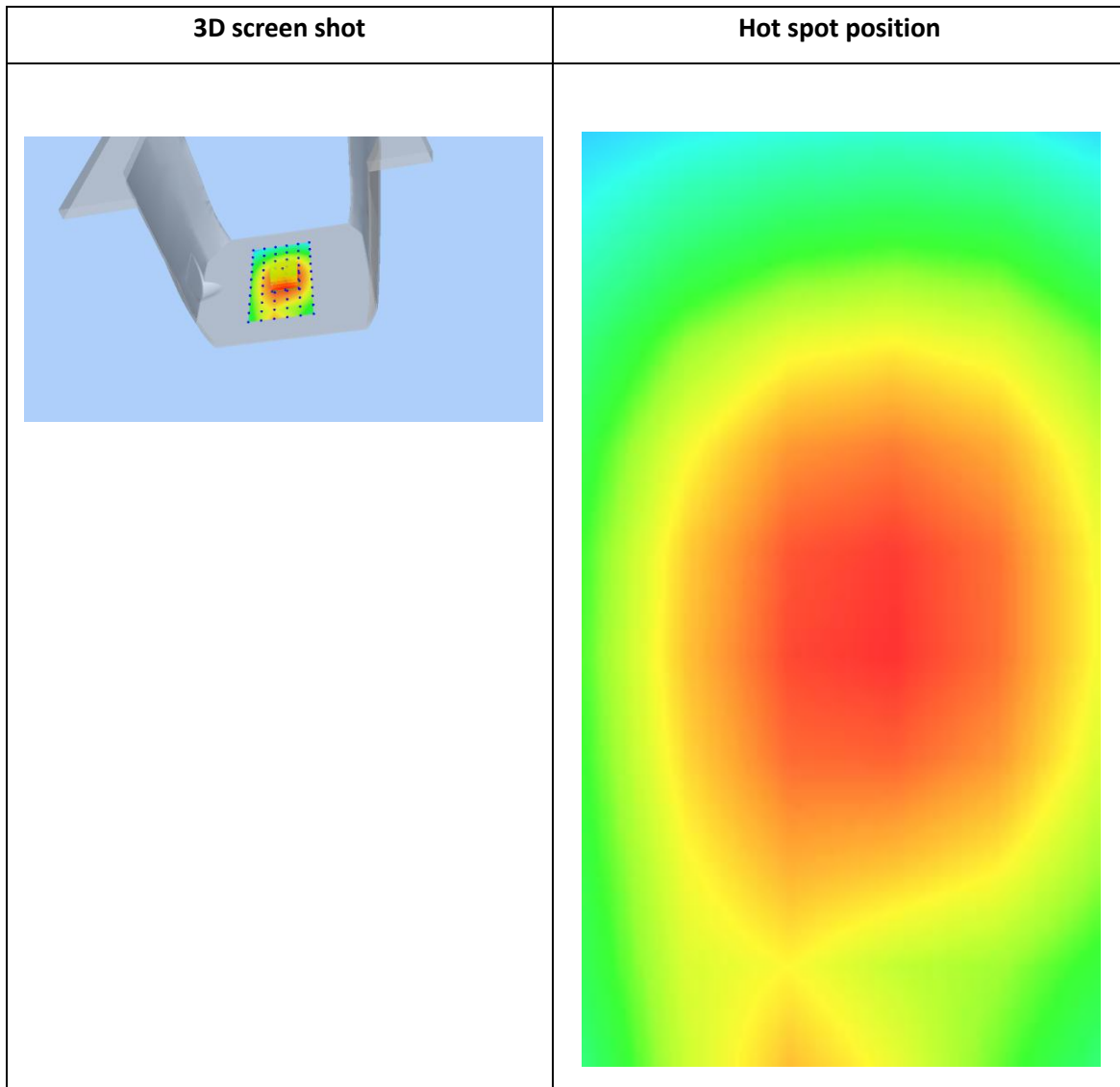
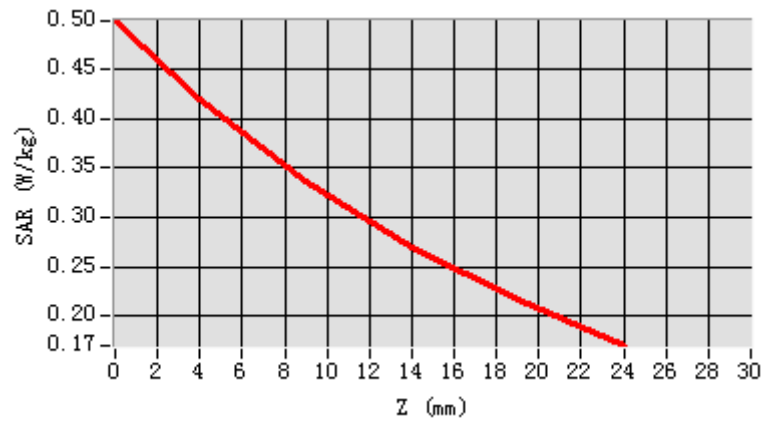


Maximum location: X=3.00, Y=-9.00

SAR Peak: 0.50 W/kg

SAR 10g (W/Kg)	0.314932
SAR 1g (W/Kg)	0.412415

Z (mm)	0.00	4.00	9.00	14.00	19.00
SAR (W/Kg)	0.4985	0.4192	0.3365	0.2698	0.2158



Plot 7: WCDMA1900, Right Cheek, Middle,10mm

Type: Phone measurement

Date of measurement: 01/24/2019

Measurement duration: 22 minutes 13 seconds

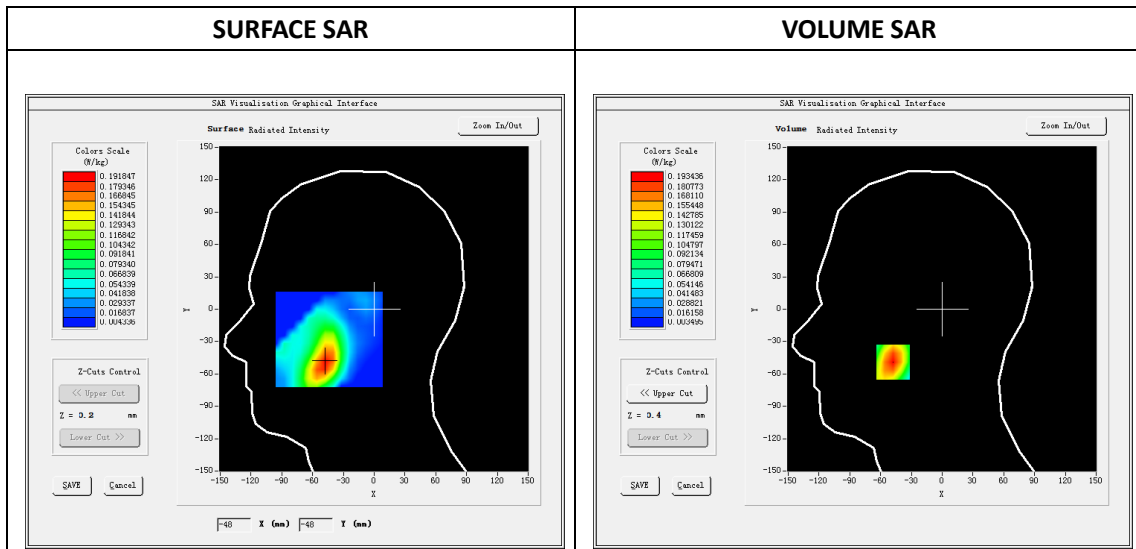
Mobile Phone IMEI number: --

A. Experimental conditions.

Area Scan	dx=8mm dy=8mm
ZoomScan	5x5x7,dx=8mm dy=8mm dz=5mm
Phantom	Validation plane
Device Position	Right Cheek
Band	Band2_WCDMA1900
Channels	9400
Signal	WCDMA (Duty cycle: 1:1)

B. SAR Measurement Results

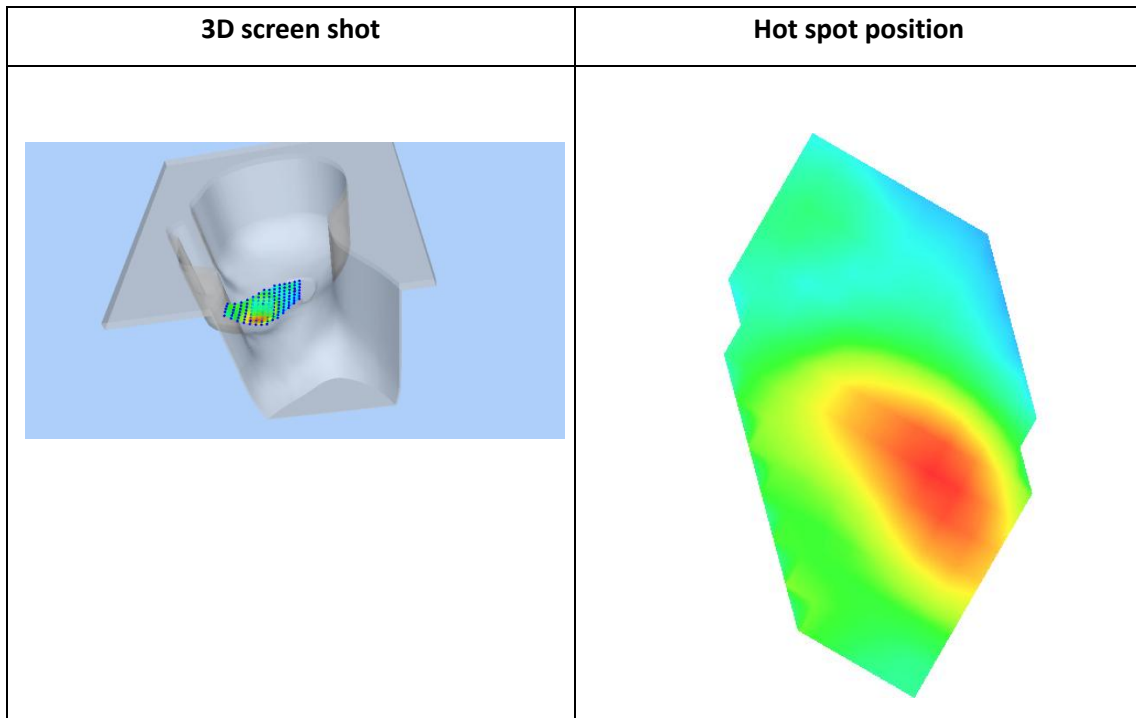
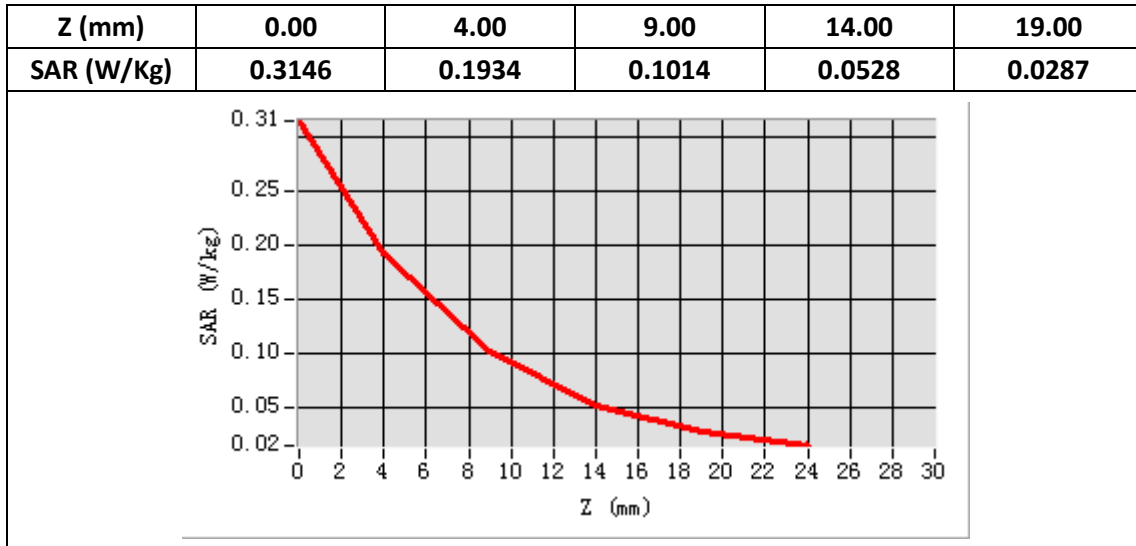
E-Field Probe	SATIMO SN_04/13_EP166
Frequency (MHz)	1880
Relative permittivity (real part)	40.55
Relative permittivity (imaginary part)	13.54
Conductivity (S/m)	1.43
Variation (%)	-2.62
ConvF:	5.90



Maximum location: X=-48.00, Y=-49.00

SAR Peak: 0.31W/kg

SAR 10g (W/Kg)	0.096278
SAR 1g (W/Kg)	0.181786



Plot 8: WCDMA1900,Back, Middle,10mm

Type: Phone measurement

Date of measurement: 01/24/2019

Measurement duration: 22 minutes 21 seconds

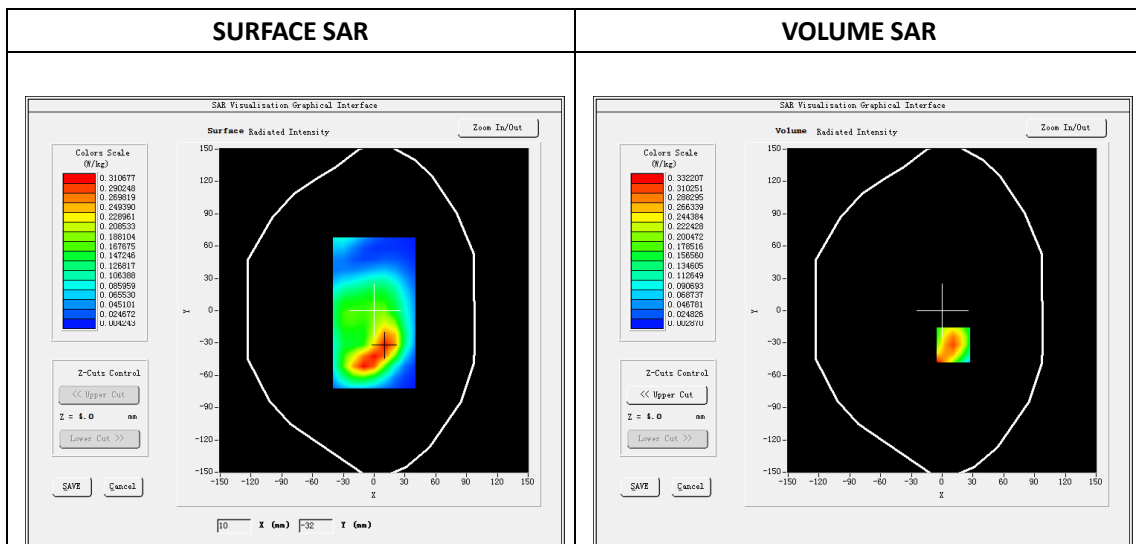
Mobile Phone IMEI number: --

A. Experimental conditions.

Area Scan	dx=8mm dy=8mm
ZoomScan	5x5x7,dx=8mm dy=8mm dz=5mm
Phantom	Validation plane
Device Position	Back
Band	Band2_WCDMA1900
Channels	9400
Signal	WCDMA (Duty cycle: 1:1)

B. SAR Measurement Results

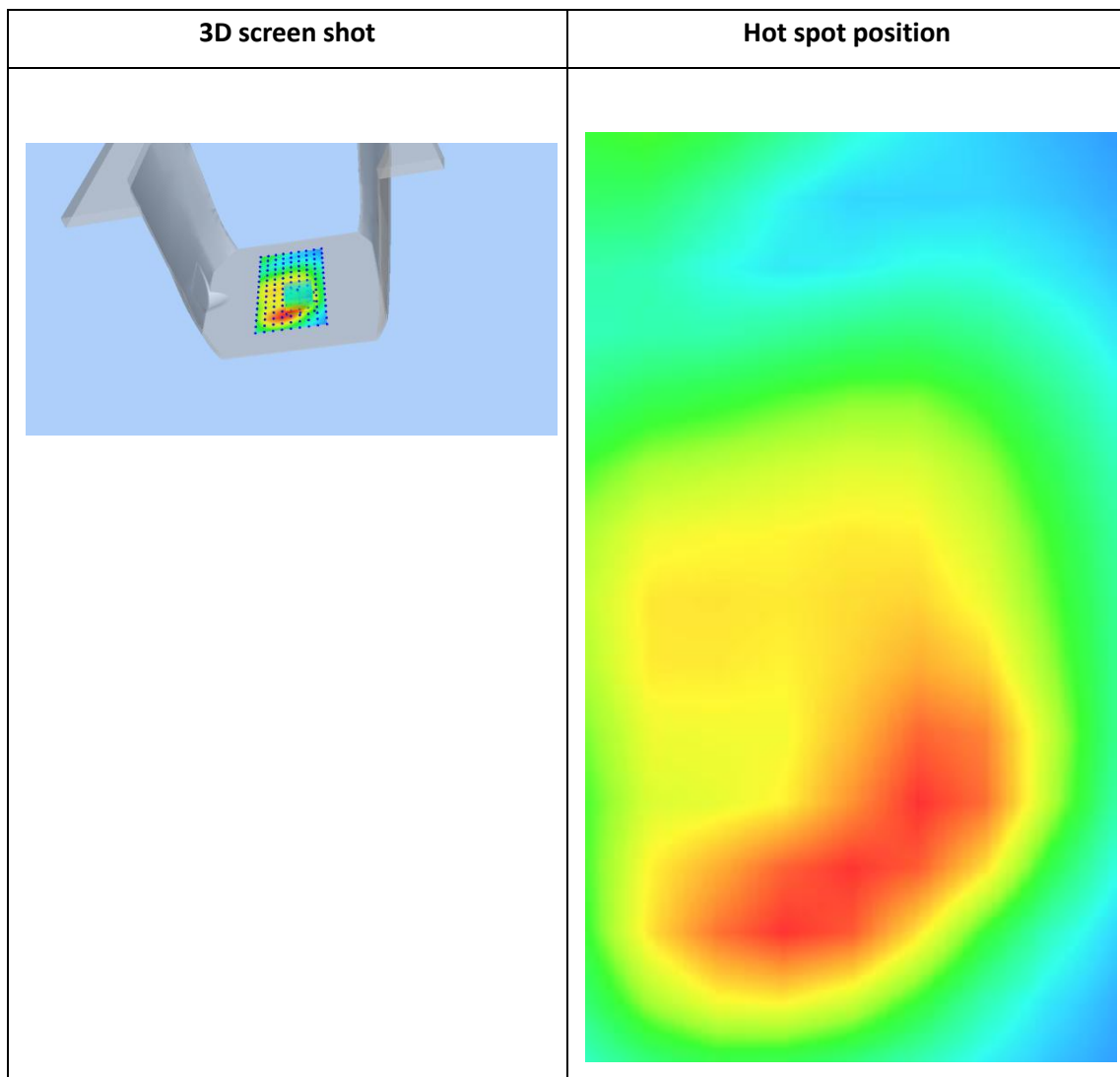
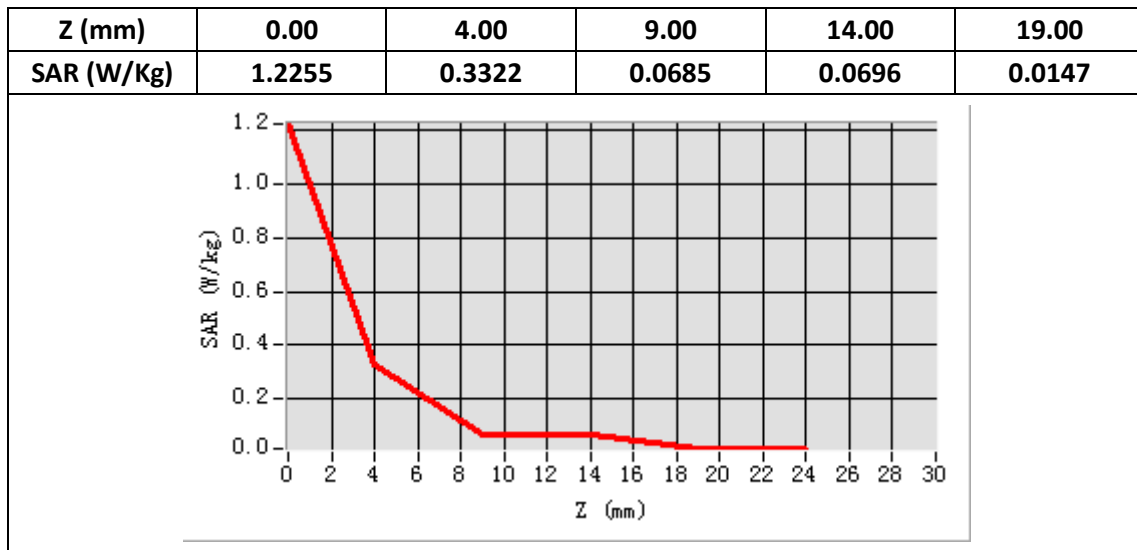
E-Field Probe	SATIMO SN_04/13_EP166
Frequency (MHz)	1880
Relative permittivity (real part)	53.36
Relative permittivity (imaginary part)	14.40
Conductivity (S/m)	1.52
Variation (%)	-0.20
ConvF:	6.10



Maximum location: X=11.00, Y=-32.00

SAR Peak: 0.58W/kg

SAR 10g (W/Kg)	0.144891
SAR 1g (W/Kg)	0.271968



Plot 9: WCDMA1700, Left Cheek, Middle,10mm

Type: Phone measurement

Date of measurement: 01/23/2019

Measurement duration: 22 minutes 13 seconds

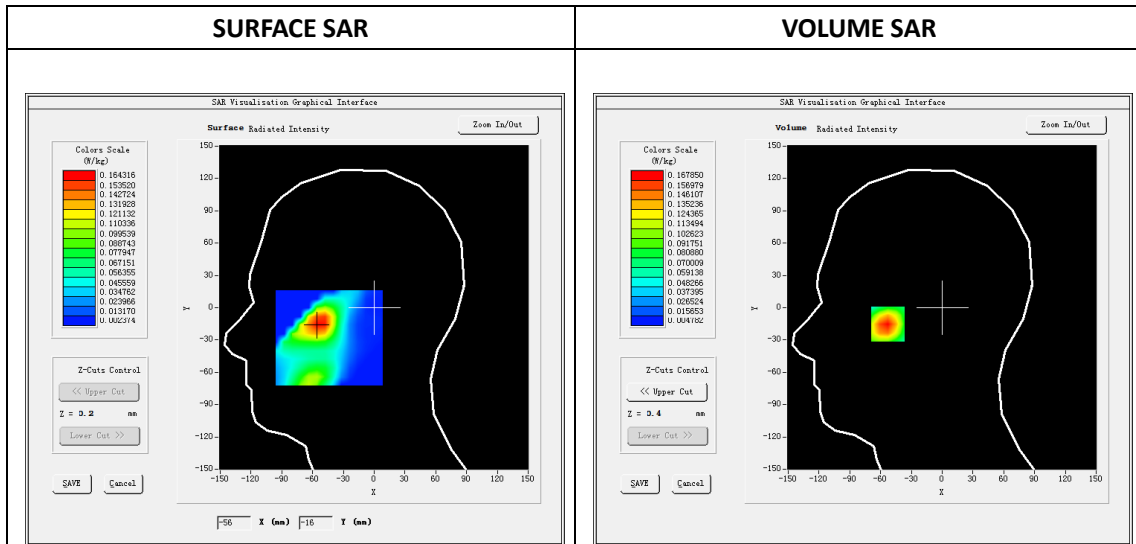
Mobile Phone IMEI number: --

A. Experimental conditions.

Area Scan	dx=8mm dy=8mm
ZoomScan	5x5x7,dx=8mm dy=8mm dz=5mm
Phantom	Validation plane
Device Position	Left Cheek
Band	Band2_WCDMA1700
Channels	1413
Signal	WCDMA (Duty cycle: 1:1)

B. SAR Measurement Results

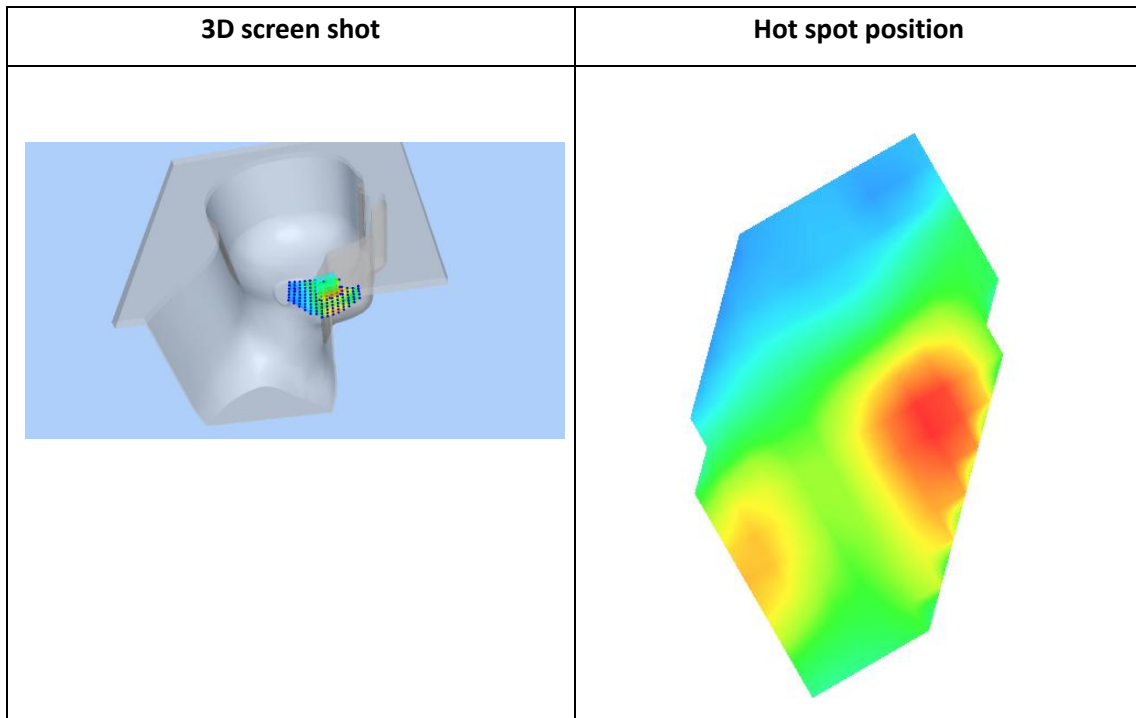
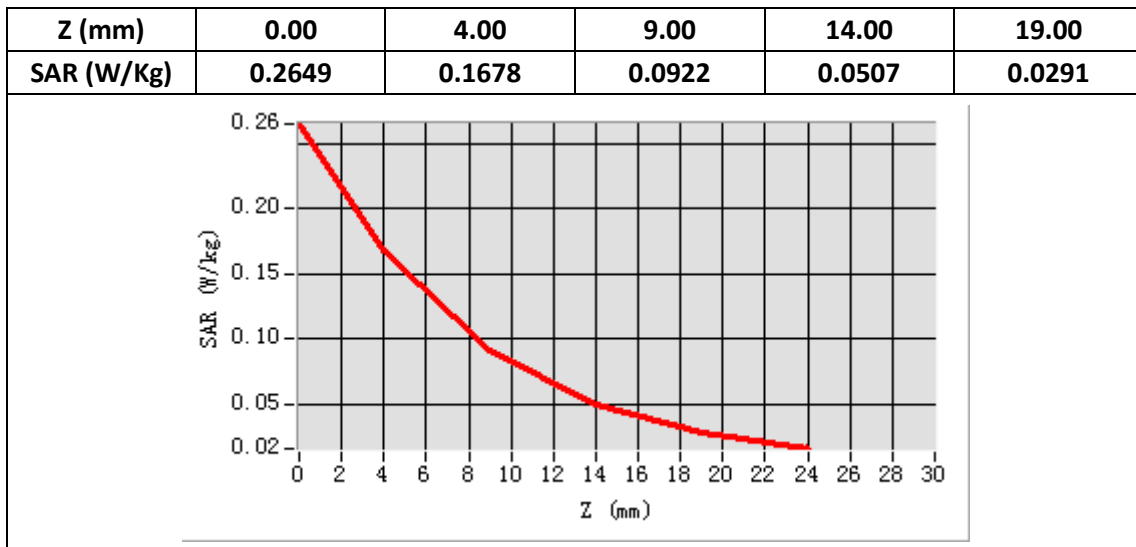
E-Field Probe	SATIMO SN_04/13_EP166
Frequency (MHz)	1732.6
Relative permittivity (real part)	40.41
Relative permittivity (imaginary part)	14.30
Conductivity (S/m)	1.43
Variation (%)	-1.97
ConvF:	5.90



Maximum location: X=-53.00, Y=14.00

SAR Peak: 0.27W/kg

SAR 10g (W/Kg)	0.085270
SAR 1g (W/Kg)	0.160778



Plot 10: WCDMA1700,Back, Middle,10mm

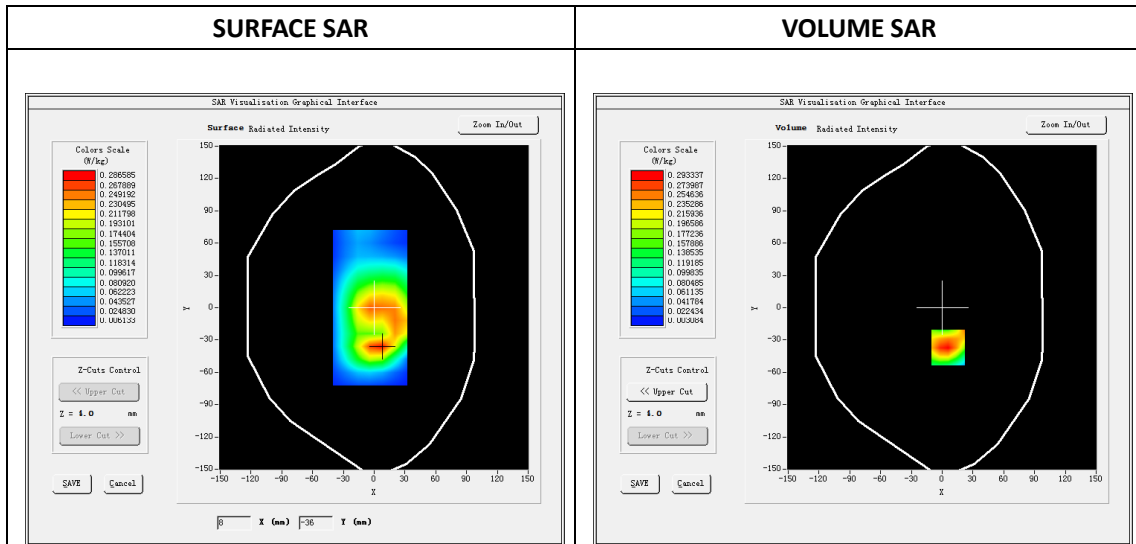
Type: Phone measurement
 Date of measurement: 01/23/2019
 Measurement duration: 22 minutes 21 seconds
 Mobile Phone IMEI number: --

A. Experimental conditions.

Area Scan	dx=8mm dy=8mm
ZoomScan	5x5x7,dx=8mm dy=8mm dz=5mm
Phantom	Validation plane
Device Position	Back
Band	Band2_WCDMA1700
Channels	1413
Signal	WCDMA (Duty cycle: 1:1)

B. SAR Measurement Results

E-Field Probe	SATIMO SN_04/13_EP166
Frequency (MHz)	1732.6
Relative permittivity (real part)	53.31
Relative permittivity (imaginary part)	15.10
Conductivity (S/m)	1.51
Variation (%)	-1.63
ConvF:	6.10

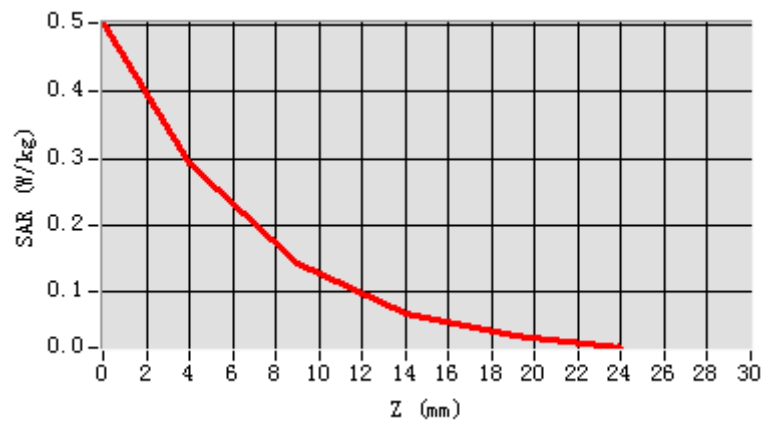


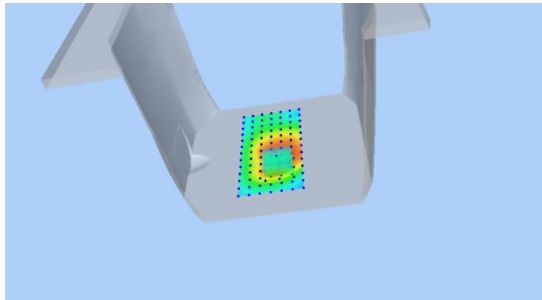
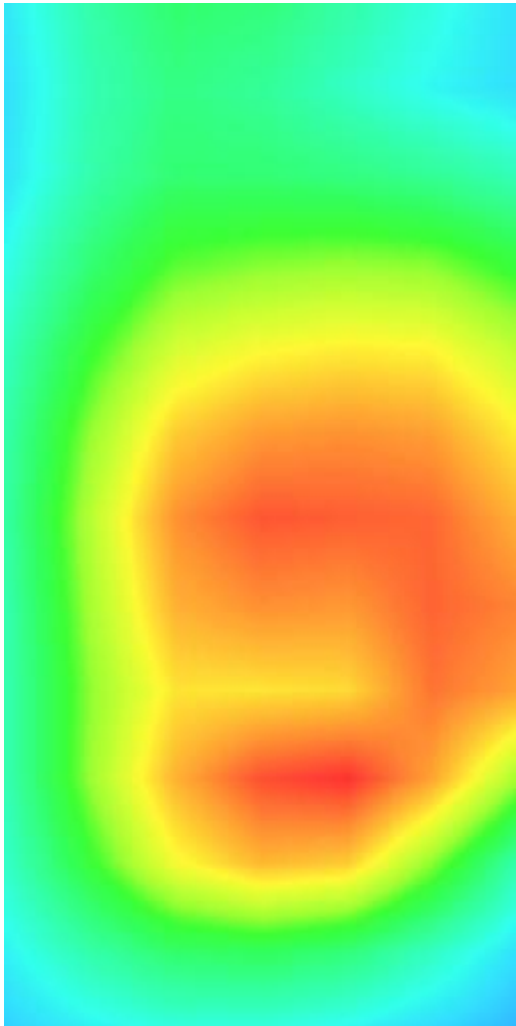
Maximum location: X=6.00, Y=-37.00

SAR Peak: 0.51W/kg

SAR 10g (W/Kg)	0.141655
SAR 1g (W/Kg)	0.282363

Z (mm)	0.00	4.00	9.00	14.00	19.00
SAR (W/Kg)	0.5020	0.2933	0.1420	0.0679	0.0345



3D screen shot	Hot spot position
	

Plot 11: LTE Band2, 20MHz, Left Cheek , Middle

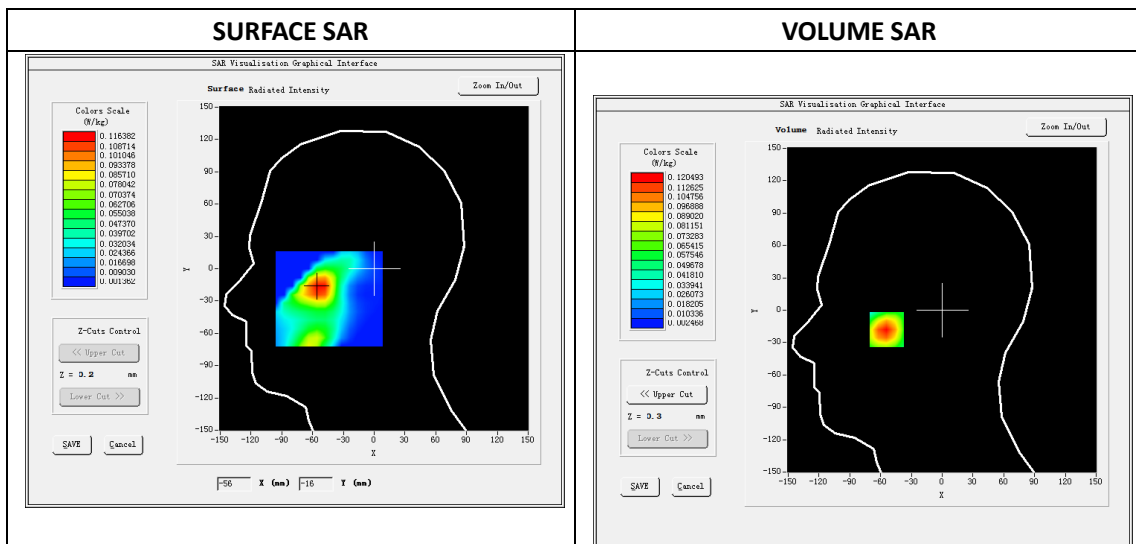
Type: Phone measurement
 Date of measurement: 01/24/2019
 Measurement duration: 22 minutes 35 seconds
 Mobile Phone IMEI number: --

A. Experimental conditions.

Area Scan	dx=8mm dy=8mm
ZoomScan	5x5x7,dx=8mm dy=8mm dz=5mm
Phantom	Validation plane
Device Position	Let Cheek
Band	LTE Band 2
Channels	18900
Signal	LTE (Duty cycle: 1:1)

B. SAR Measurement Results

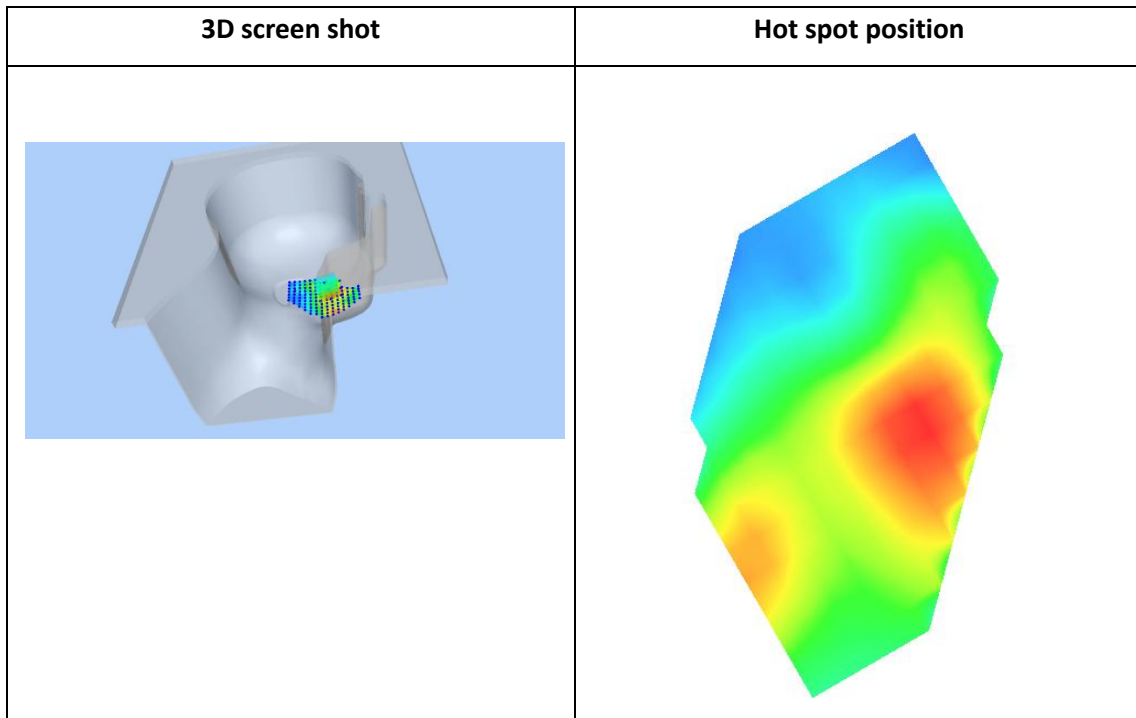
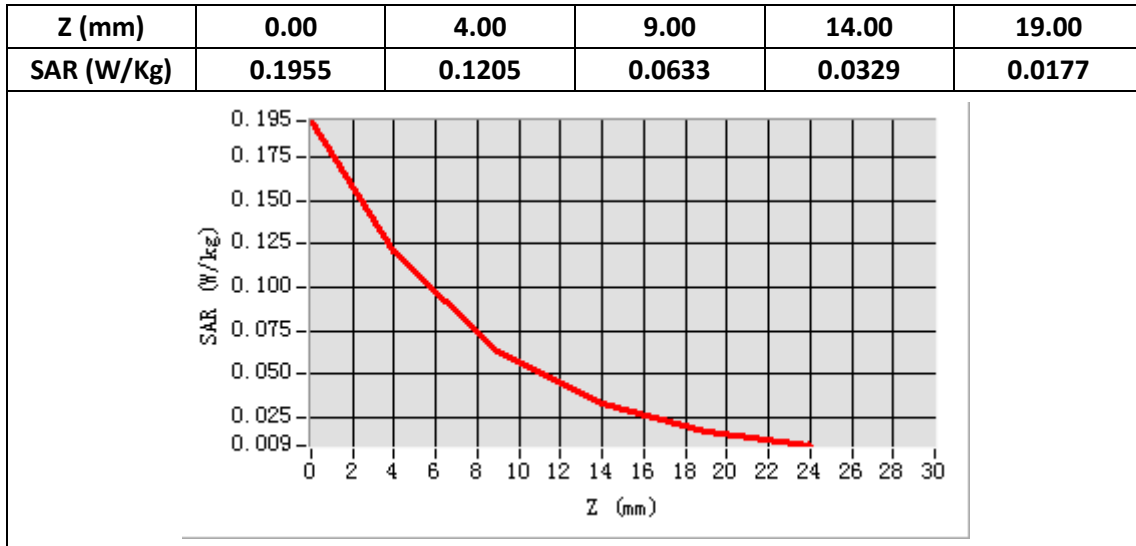
E-Field Probe	SATIMO SN_04/13_EP166
Frequency (MHz)	1880
Relative permittivity (real part)	40.55
Relative permittivity (imaginary part)	13.54
Conductivity (S/m)	1.43
Variation (%)	1.84
ConvF:	5.90



Maximum location: X=-54.00, Y=-17.00

SAR Peak: 0.20 W/kg

SAR 10g (W/Kg)	0.059157
SAR 1g (W/Kg)	0.113322



Plot 12: LTE Band2, 20MHz, Back Middle,10mm

Type: Phone measurement

Date of measurement: 01/24/2019

Measurement duration: 22 minutes 23 seconds

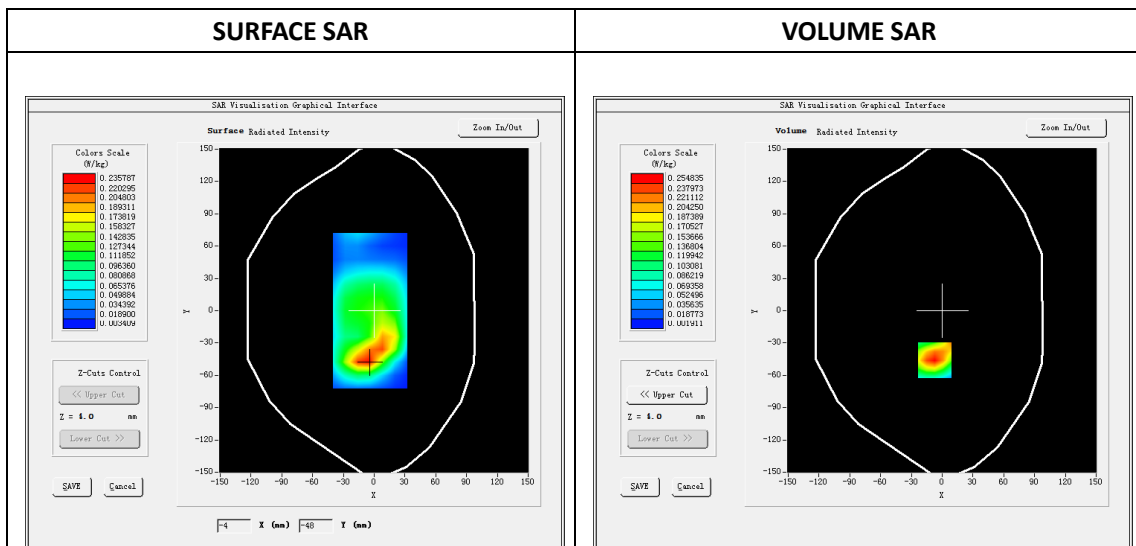
Mobile Phone IMEI number: --

A. Experimental conditions.

Area Scan	dx=8mm dy=8mm
ZoomScan	5x5x7,dx=8mm dy=8mm dz=5mm
Phantom	Validation plane
Device Position	Back
Band	LTE Band 2
Channels	18900
Signal	LTE (Duty cycle: 1:1)

B. SAR Measurement Results

E-Field Probe	SATIMO SN_04/13_EP166
Frequency (MHz)	1880
Relative permittivity (real part)	53.36
Relative permittivity (imaginary part)	14.40
Conductivity (S/m)	1.52
Variation (%)	-0.93
ConvF:	5.90

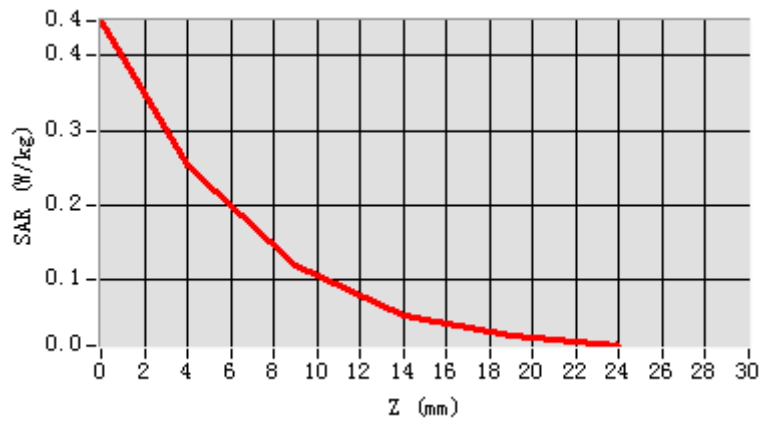


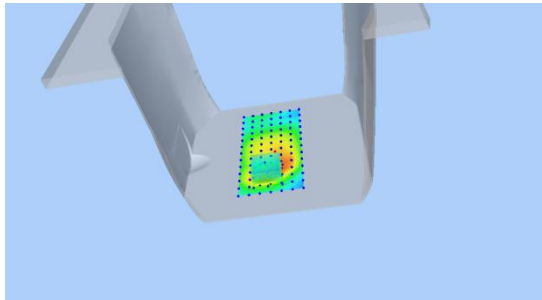
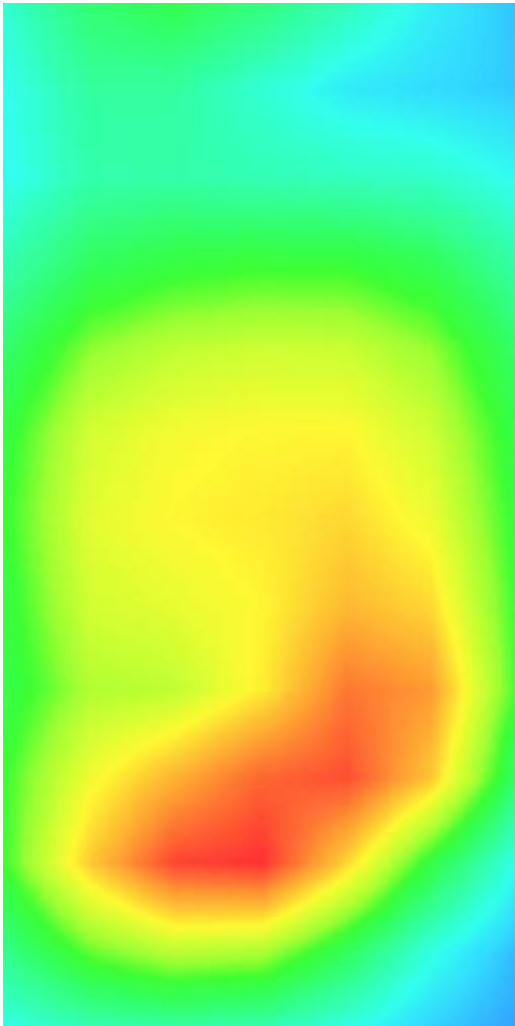
Maximum location: X=-7.00, Y=-46.00

SAR Peak: 0.45W/kg

SAR 10g (W/Kg)	0.116494
SAR 1g (W/Kg)	0.240114

Z (mm)	0.00	4.00	9.00	14.00	19.00
SAR (W/Kg)	0.4467	0.2548	0.1185	0.0539	0.0260



3D screen shot	Hot spot position
	

Plot 13: LTE Band4, 20MHz,Right Cheek, Middle

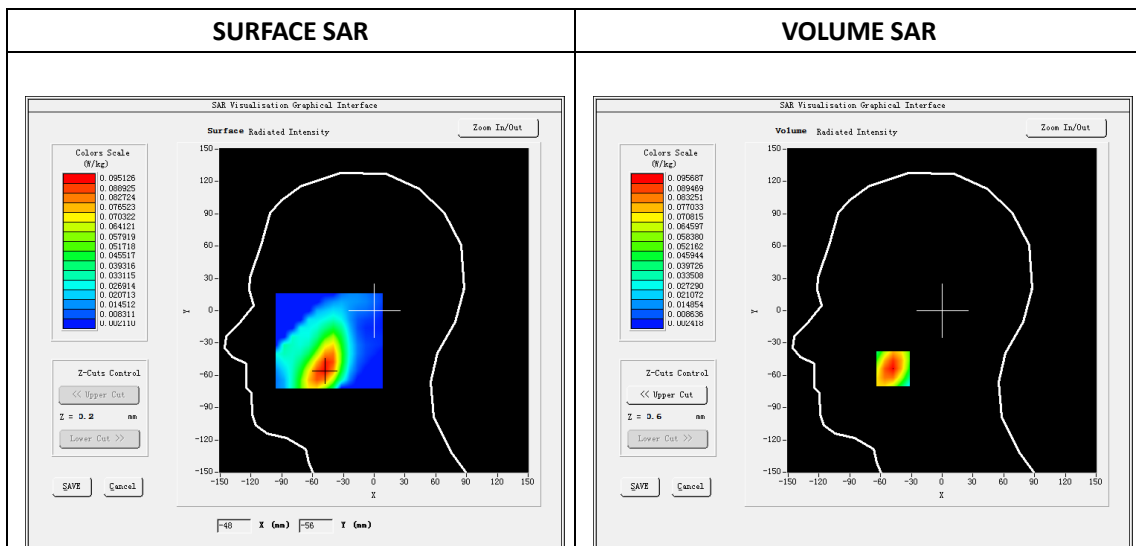
Type: Phone measurement
 Date of measurement: 01/23/2019
 Measurement duration: 22 minutes 14 seconds
 Mobile Phone IMEI number: --

A. Experimental conditions.

Area Scan	dx=8mm dy=8mm
ZoomScan	5x5x7,dx=8mm dy=8mm dz=5mm
Phantom	Validation plane
Device Position	Right Cheek
Band	LTE Band 4
Channels	20175
Signal	LTE (Duty cycle: 1:1)

B. SAR Measurement Results

E-Field Probe	SATIMO SN_04/13_EP166
Frequency (MHz)	1732.5
Relative permittivity (real part)	40.55
Relative permittivity (imaginary part)	13.54
Conductivity (S/m)	1.43
Variation (%)	1.96
ConvF:	5.43

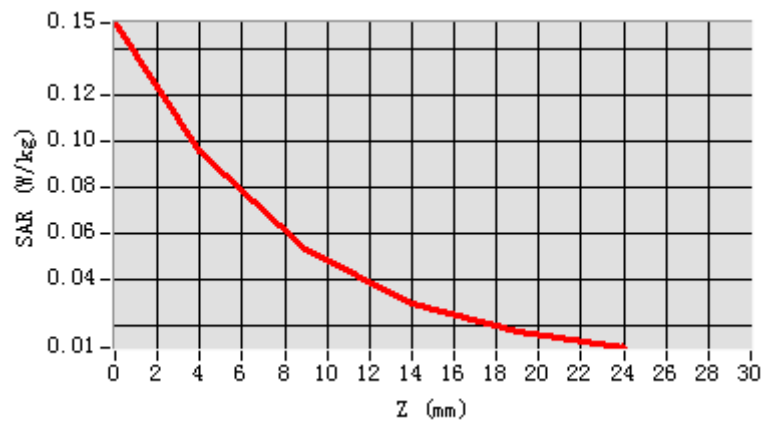


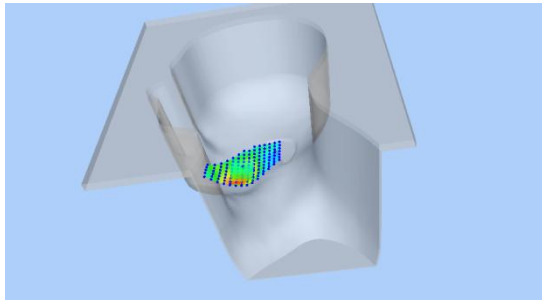
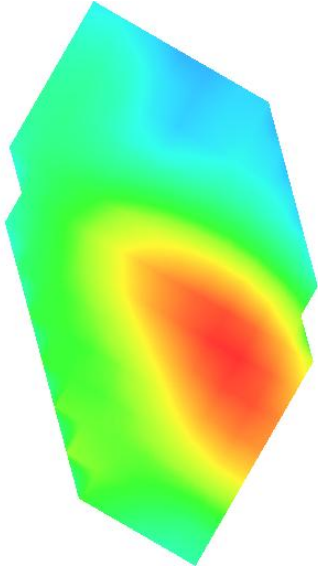
Maximum location: X=-48.00, Y=-54.00

SAR Peak: 0.15 W/kg

SAR 10g (W/Kg)	0.050817
SAR 1g (W/Kg)	0.092481

Z (mm)	0.00	4.00	9.00	14.00	19.00
SAR (W/Kg)	0.1511	0.0957	0.0526	0.0292	0.0172



3D screen shot	Hot spot position
	

Plot 14: LTE Band4, 20MHz, BACK, Middle,10mm

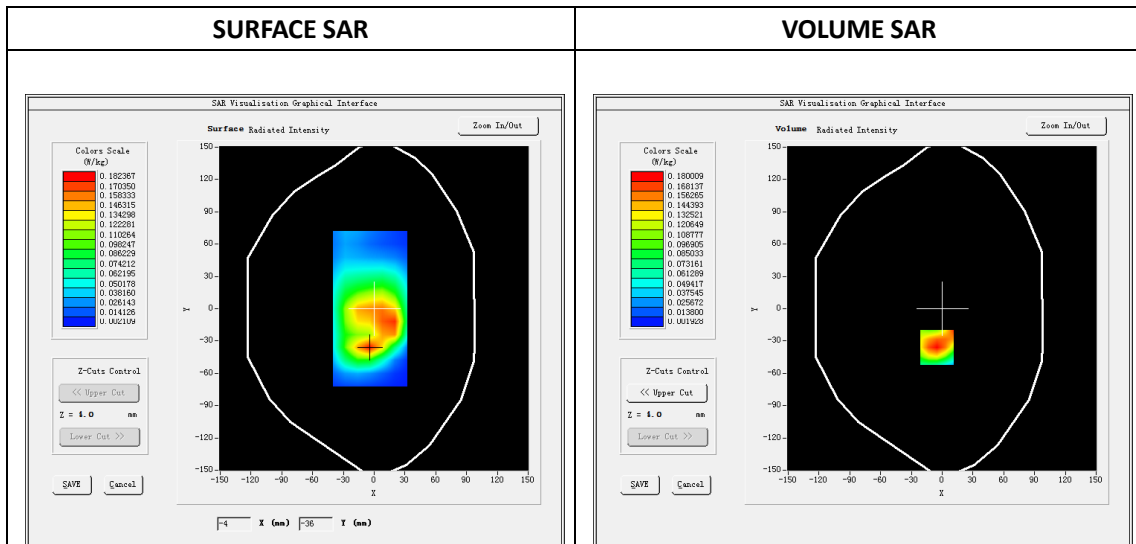
Type: Phone measurement
 Date of measurement: 01/23/2019
 Measurement duration: 22 minutes 19 seconds
 Mobile Phone IMEI number: --

A. Experimental conditions.

Area Scan	dx=8mm dy=8mm
ZoomScan	5x5x7,dx=8mm dy=8mm dz=5mm
Phantom	Validation plane
Device Position	Back
Band	LTE Band 4
Channels	20175
Signal	LTE (Duty cycle: 1:1)

B. SAR Measurement Results

E-Field Probe	SATIMO SN_04/13_EP166
Frequency (MHz)	1732.5
Relative permittivity (real part)	53.31
Relative permittivity (imaginary part)	15.10
Conductivity (S/m)	1.51
Variation (%)	-0.37
ConvF:	5.60

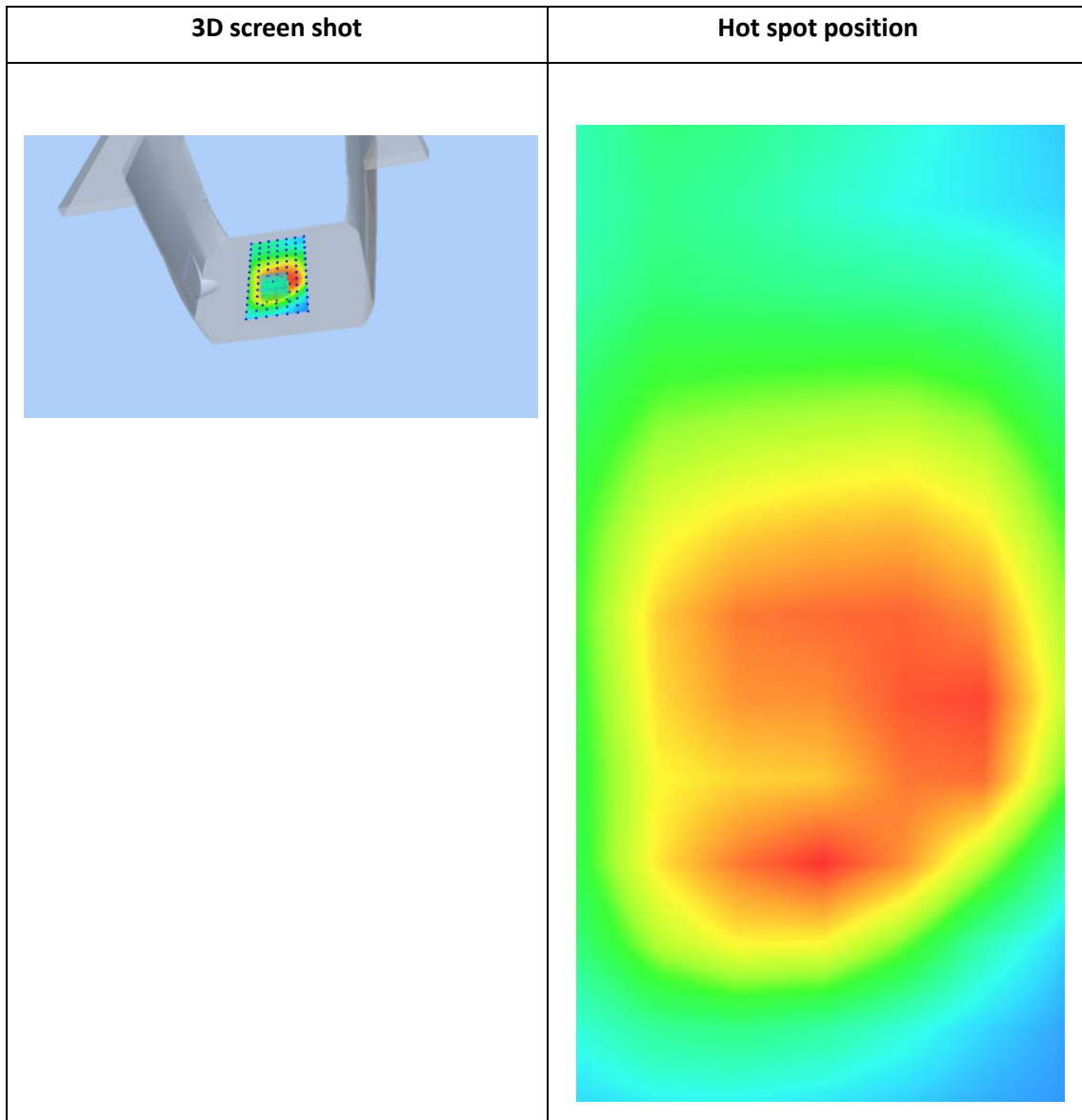
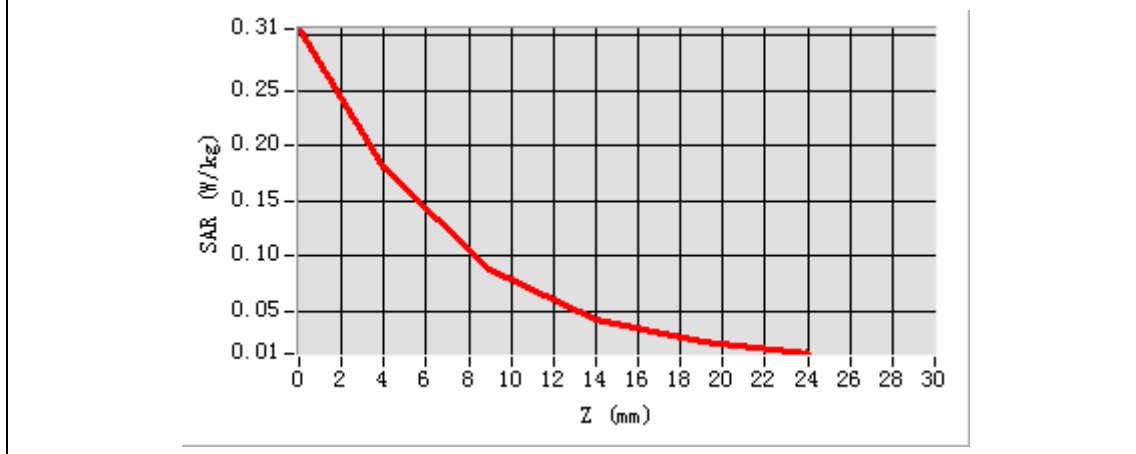


Maximum location: X=-5.00, Y=-36.00

SAR Peak: 0.31 W/kg

SAR 10g (W/Kg)	0.086574
SAR 1g (W/Kg)	0.170121

Z (mm)	0.00	4.00	9.00	14.00	19.00
SAR (W/Kg)	0.3055	0.1800	0.0884	0.0429	0.0221



Plot 15 LTE Band5, 10MHz, Right Cheek, Middle

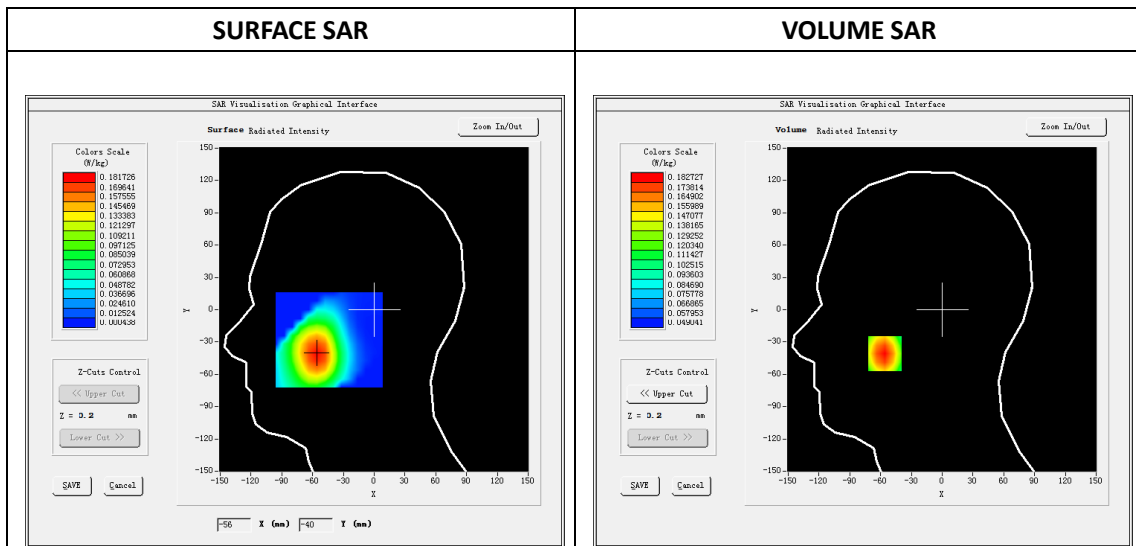
Type: Phone measurement
 Date of measurement: 01/22/2019
 Measurement duration: 22 minutes 31econds
 Mobile Phone IMEI number: --

A. Experimental conditions.

Area Scan	dx=8mm dy=8mm
ZoomScan	5x5x7,dx=8mm dy=8mm dz=5mm
Phantom	Validation plane
Device Position	Right Cheek
Band	LTE Band 5
Channels	20525
Signal	LTE (Duty cycle: 1:1)

B. SAR Measurement Results

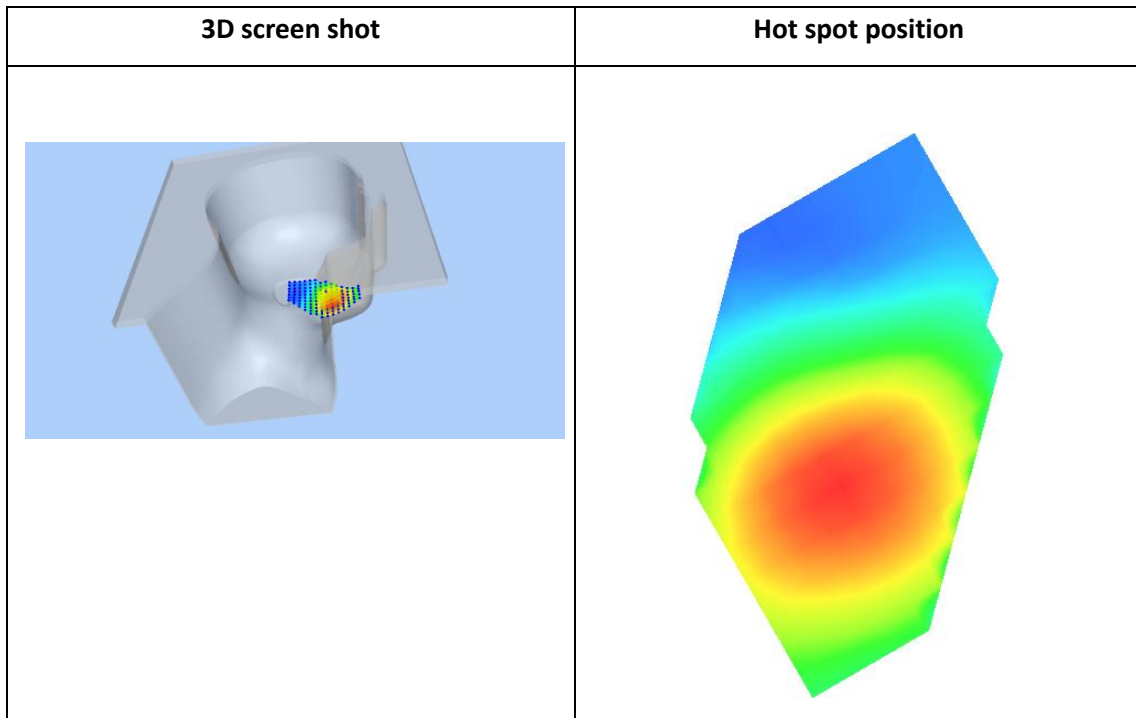
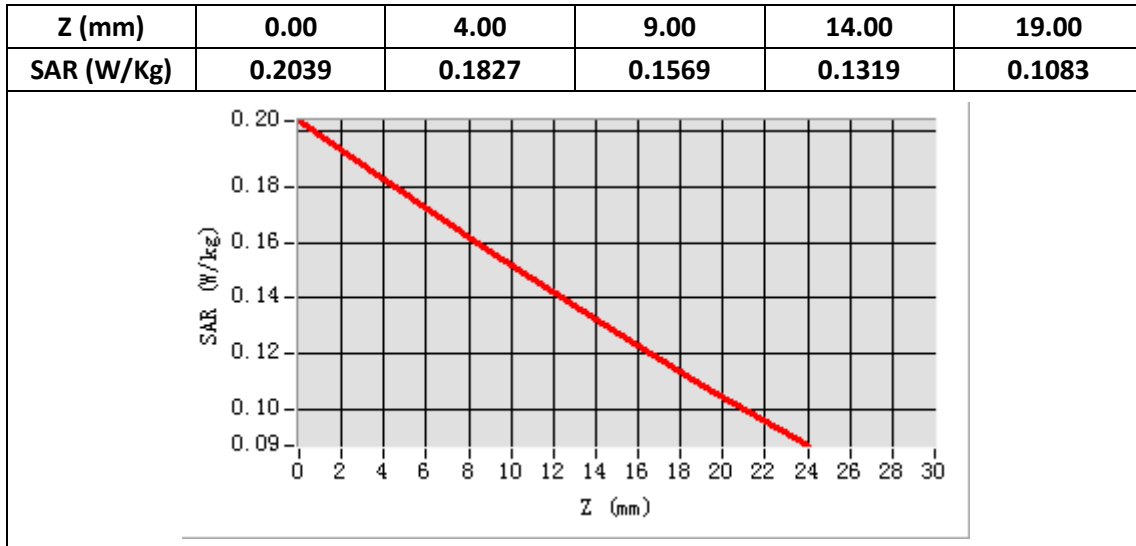
E-Field Probe	SATIMO SN_04/13_EP166
Frequency (MHz)	836.5
Relative permittivity (real part)	41.44
Relative permittivity (imaginary part)	18.27
Conductivity (S/m)	0.87
Variation (%)	0.11
ConvF:	5.85



Maximum location: X=-56.00, Y=-41.00

SAR Peak: 0.20 W/kg

SAR 10g (W/Kg)	0.138741
SAR 1g (W/Kg)	0.179088



Plot 16 LTE Band5, 10MHz, Back, Middle,10mm

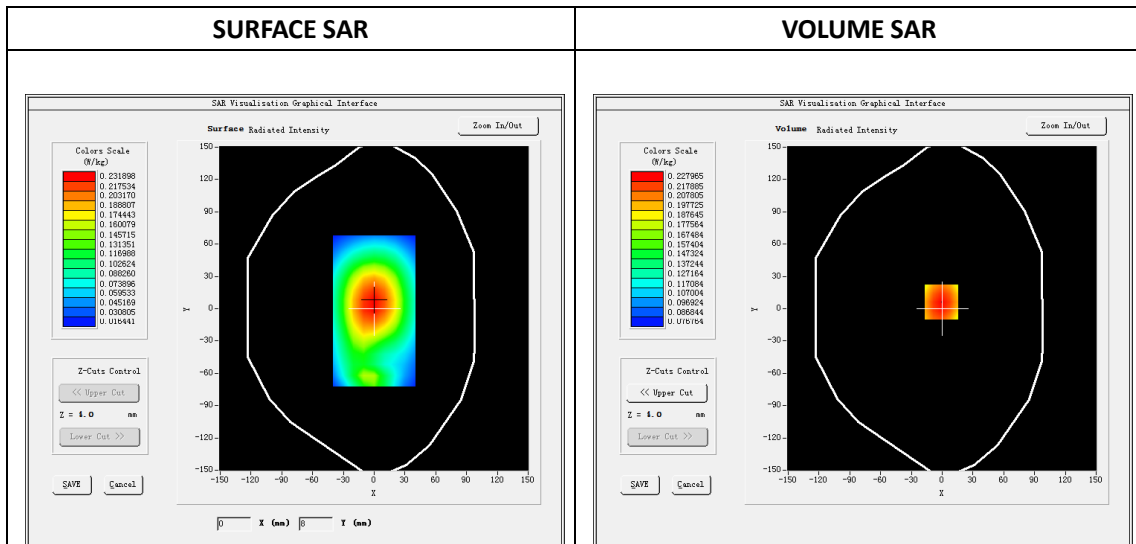
Type: Phone measurement
 Date of measurement: 01/22/2019
 Measurement duration: 22 minutes 15 seconds
 Mobile Phone IMEI number: --

A. Experimental conditions.

Area Scan	dx=8mm dy=8mm
ZoomScan	5x5x7,dx=8mm dy=8mm dz=5mm
Phantom	Validation plane
Device Position	Back
Band	LTE Band 5
Channels	20525
Signal	LTE (Duty cycle: 1:1)

B. SAR Measurement Results

E-Field Probe	SATIMO SN_04/13_EP166
Frequency (MHz)	836.5
Relative permittivity (real part)	55.18
Relative permittivity (imaginary part)	21.12
Conductivity (S/m)	0.98
Variation (%)	-0.18
ConvF:	6.17

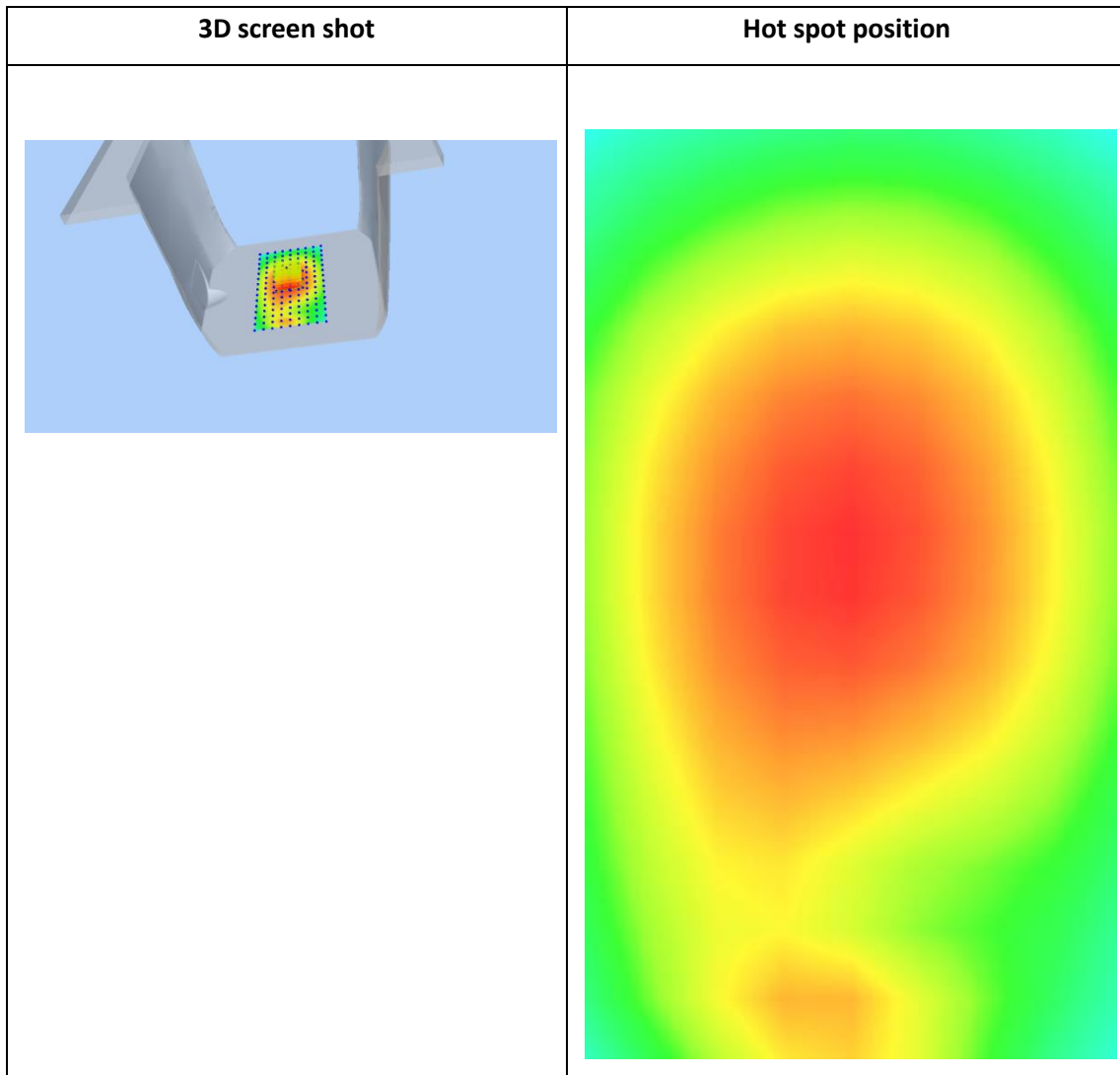
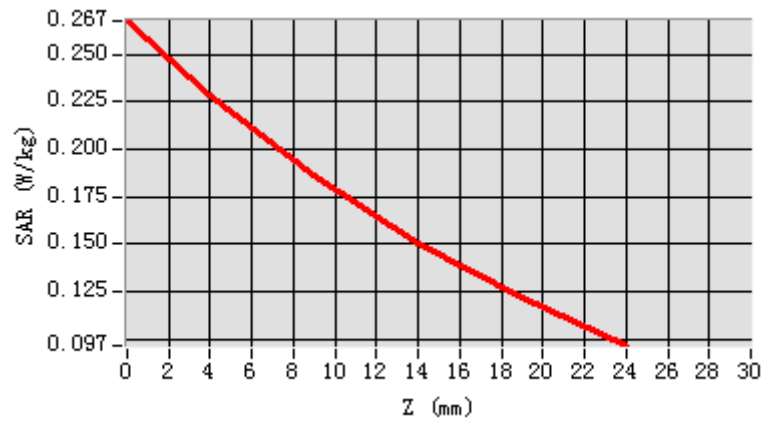


Maximum location: X=-1.00, Y=6.00

SAR Peak: 0.27W/kg

SAR 10g (W/Kg)	0.173791
SAR 1g (W/Kg)	0.224392

Z (mm)	0.00	4.00	9.00	14.00	19.00
SAR (W/Kg)	0.2675	0.2280	0.1858	0.1508	0.1216



Plot 17: LTE Band7, 20MHz, Left Cheek, Middle

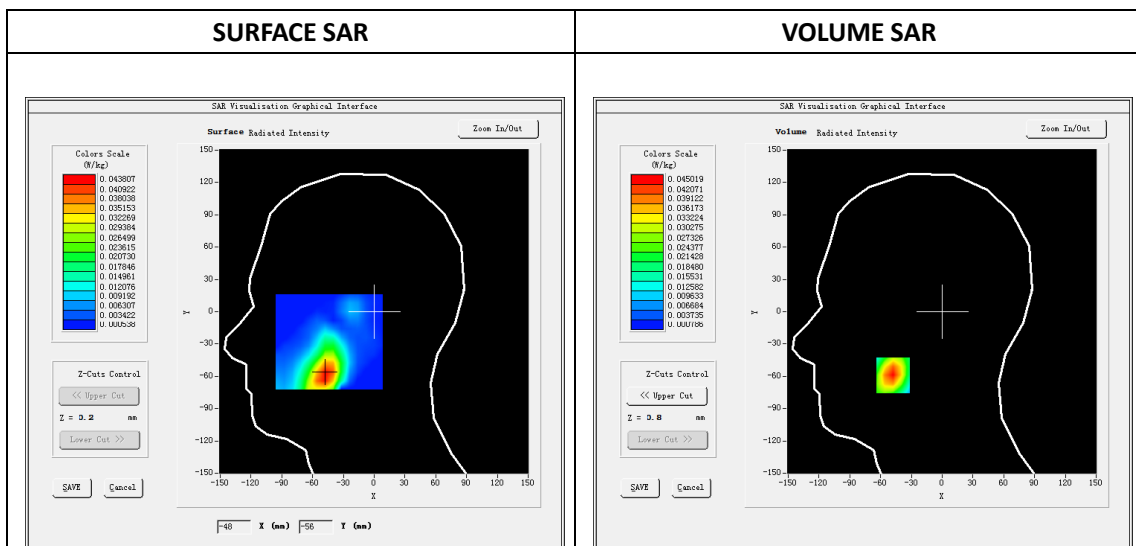
Type: Phone measurement
 Date of measurement: 01/26/2019
 Measurement duration: 22 minutes 26 seconds
 Mobile Phone IMEI number: --

A. Experimental conditions.

Area Scan	dx=8mm dy=8mm
ZoomScan	5x5x7,dx=8mm dy=8mm dz=5mm
Phantom	Validation plane
Device Position	Left Cheek
Band	LTE Band 7
Channels	21100
Signal	LTE (Duty cycle: 1:1)

B. SAR Measurement Results

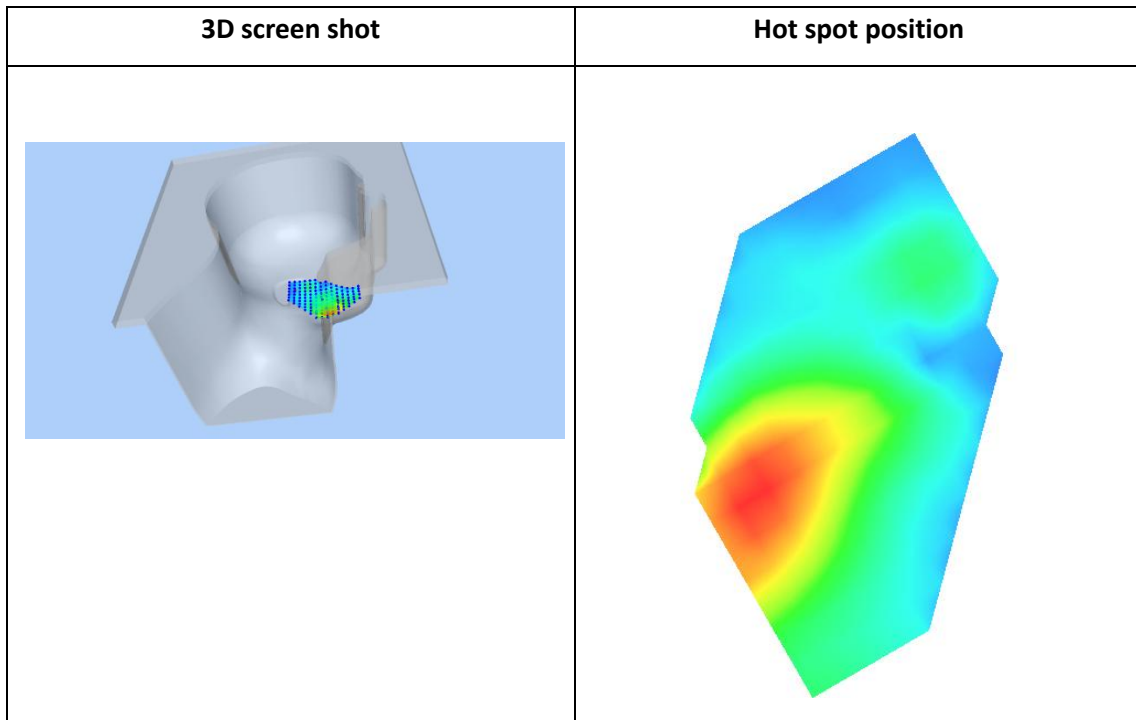
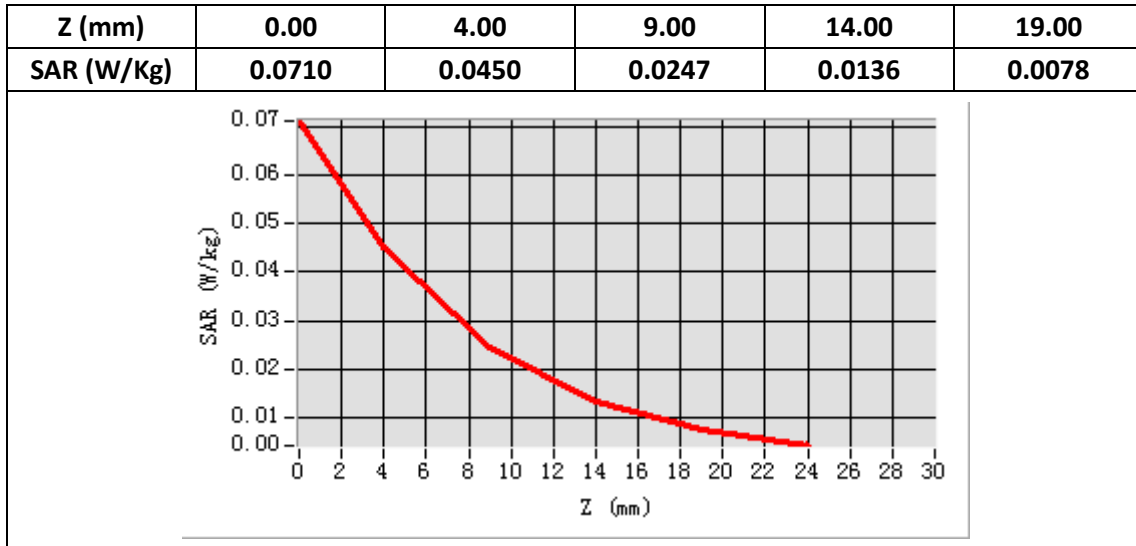
E-Field Probe	SATIMO SN_04/13_EP166
Frequency (MHz)	2535
Relative permittivity (real part)	39.22
Relative permittivity (imaginary part)	13.63
Conductivity (S/m)	1.97
Variation (%)	0.90
ConvF:	5.25



Maximum location: X=-48.00, Y=-59.00

SAR Peak: 0.07 W/kg

SAR 10g (W/Kg)	0.022136
SAR 1g (W/Kg)	0.042073



Plot 18: LTE Band7, 20MHz, Edge C, Middle,10mm

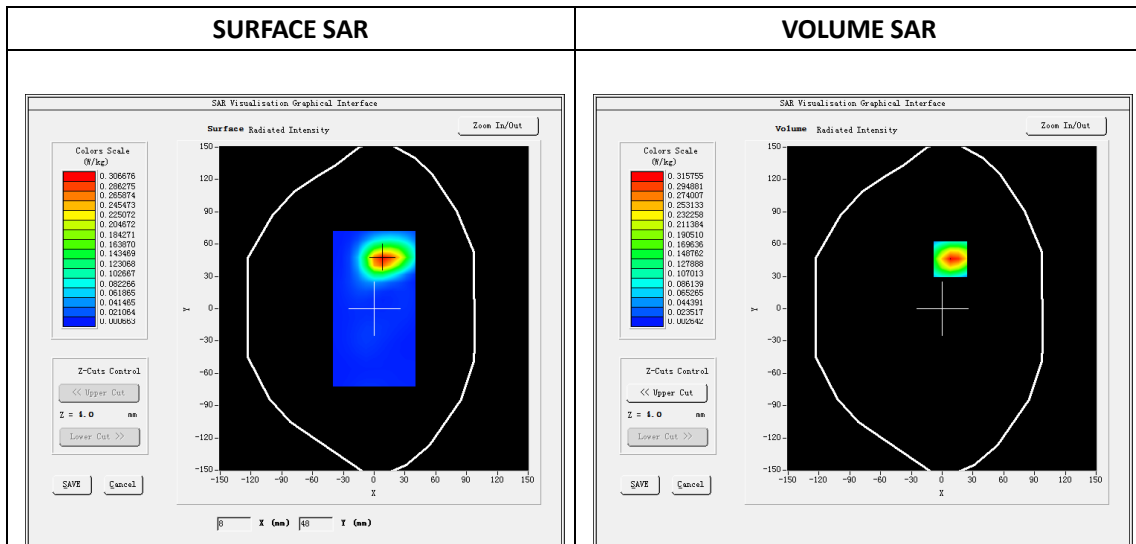
Type: Phone measurement
 Date of measurement: 01/26/2019
 Measurement duration: 22 minutes 39 seconds
 Mobile Phone IMEI number: --

A. Experimental conditions.

Area Scan	dx=8mm dy=8mm
ZoomScan	5x5x7,dx=8mm dy=8mm dz=5mm
Phantom	Validation plane
Device Position	Edge C
Band	LTE Band 7
Channels	21100
Signal	LTE (Duty cycle: 1:1)

B. SAR Measurement Results

E-Field Probe	SATIMO SN_04/13_EP166
Frequency (MHz)	2535
Relative permittivity (real part)	52.51
Relative permittivity (imaginary part)	15.02
Conductivity (S/m)	2.17
Variation (%)	0.69
ConvF:	5.28

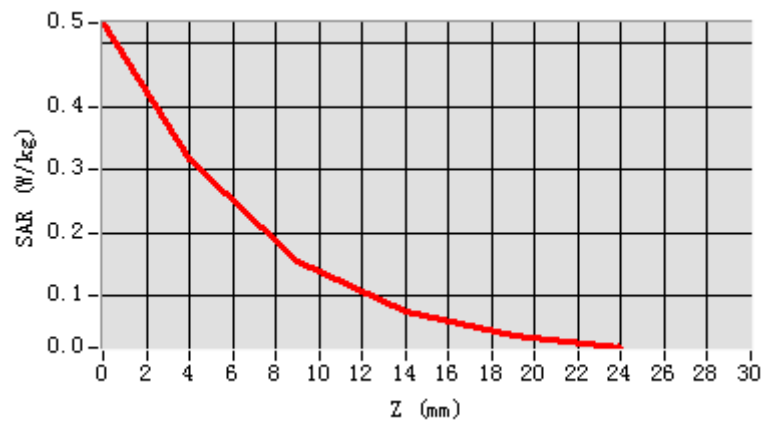


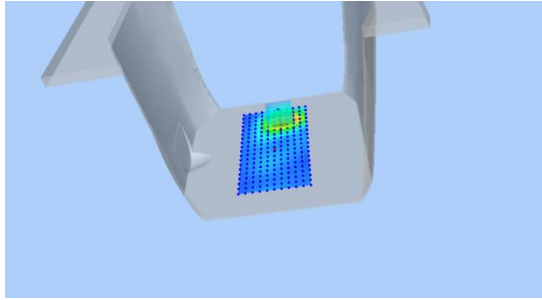
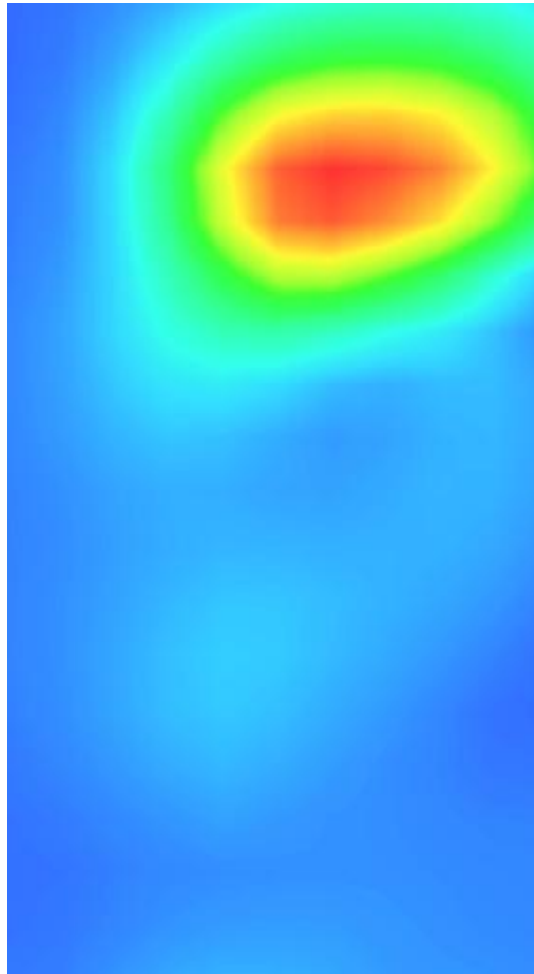
Maximum location: X=8.00, Y=46.00

SAR Peak: 0.54W/kg

SAR 10g (W/Kg)	0.151500
SAR 1g (W/Kg)	0.375887

Z (mm)	0.00	4.00	9.00	14.00	19.00
SAR (W/Kg)	0.5325	0.3158	0.1561	0.0760	0.0387



3D screen shot	Hot spot position
	

Plot 19: WIFI 2.4G 802.11b, Left Cheek, Middle

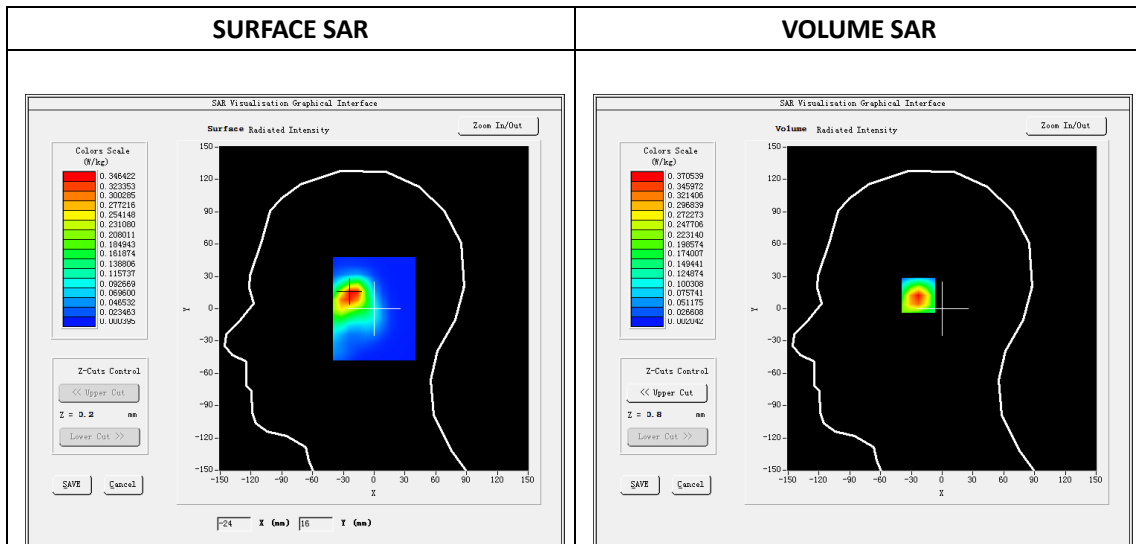
Type: Phone measurement
 Date of measurement: 01/25/2019
 Measurement duration: 22 minutes 13 seconds
 Mobile Phone IMEI number: --

A. Experimental conditions.

Area Scan	dx=8mm dy=8mm
ZoomScan	5x5x7,dx=8mm dy=8mm dz=5mm
Phantom	Validation plane
Device Position	Left Cheek
Band	WIFI
Channels	6
Signal	OFDM (Duty cycle: 1:1)

B. SAR Measurement Results

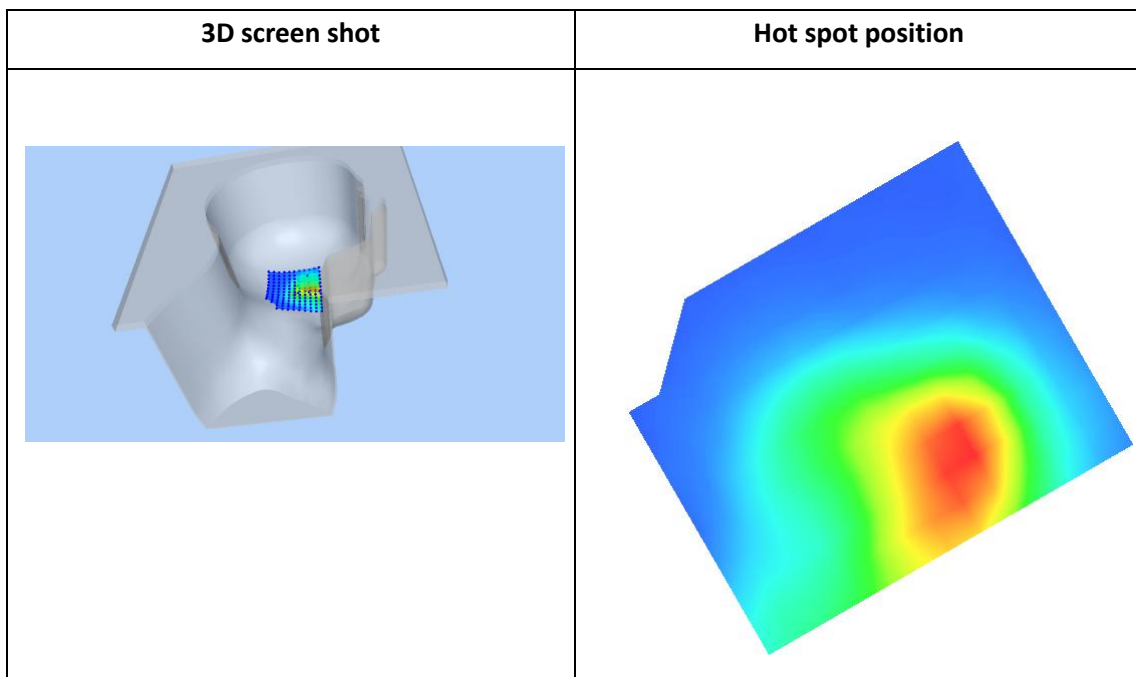
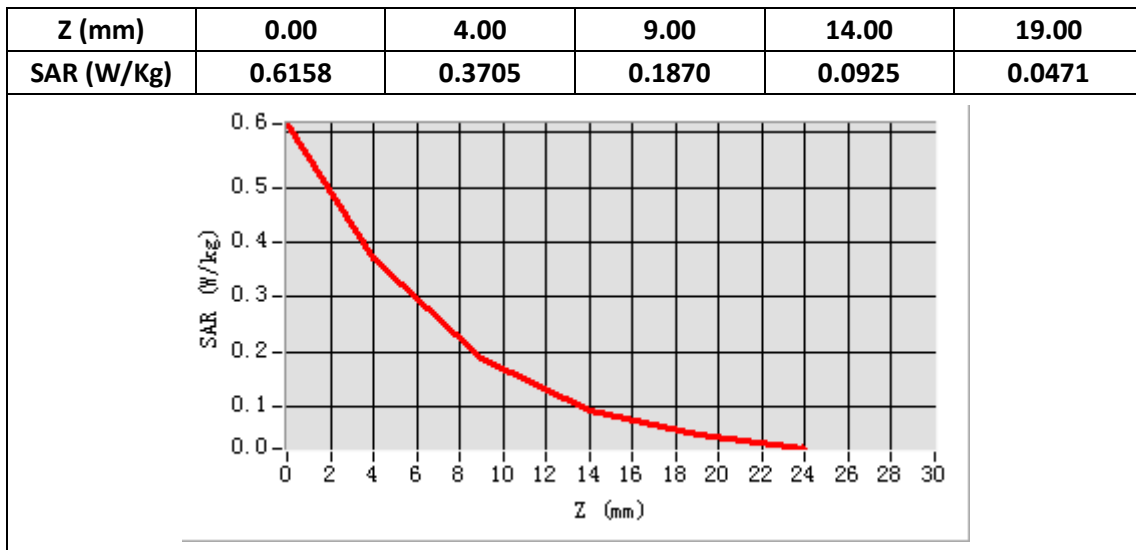
E-Field Probe	SATIMO SN_04/13_EP166
Frequency (MHz)	2437
Relative permittivity (real part)	39.25
Relative permittivity (imaginary part)	13.44
Conductivity (S/m)	1.83
Variation (%)	0.38
ConvF:	5.35



Maximum location: X=-22.00, Y=14.00

SAR Peak: 0.63W/kg

SAR 10g (W/Kg)	0.170505
SAR 1g (W/Kg)	0.369688



Plot 20: WIFI 2.4G 802.11b, Edge A ,10mm

Type: Phone measurement

Date of measurement: 01/21/2019

Measurement duration: 22 minutes 25 seconds

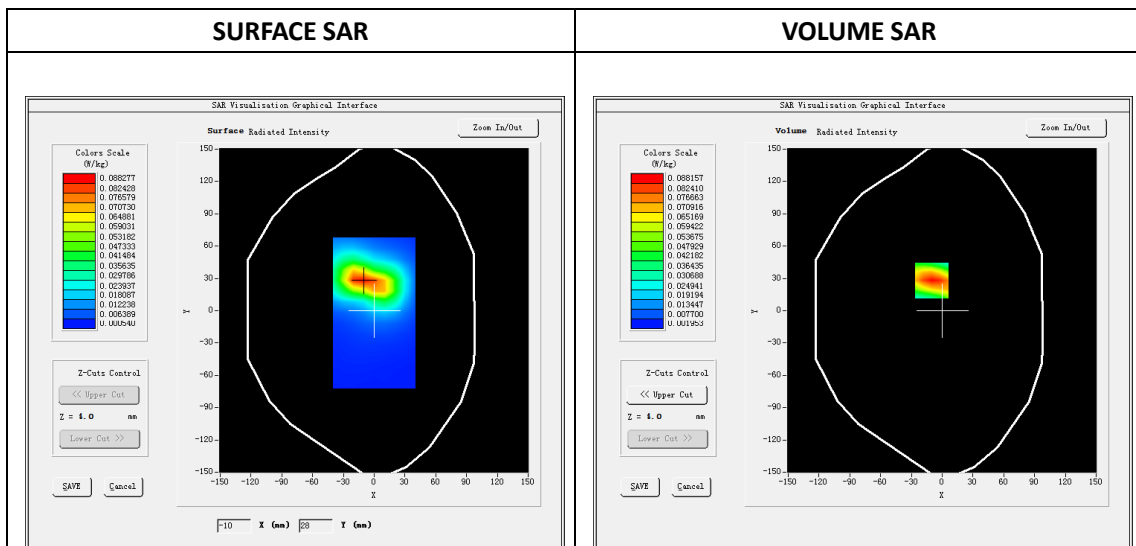
Mobile Phone IMEI number: --

A. Experimental conditions.

Area Scan	dx=8mm dy=8mm
ZoomScan	5x5x7,dx=8mm dy=8mm dz=5mm
Phantom	Validation plane
Device Position	Edge A
Band	WIFI
Channels	6
Signal	OFDM (Duty cycle: 1:1)

B. SAR Measurement Results

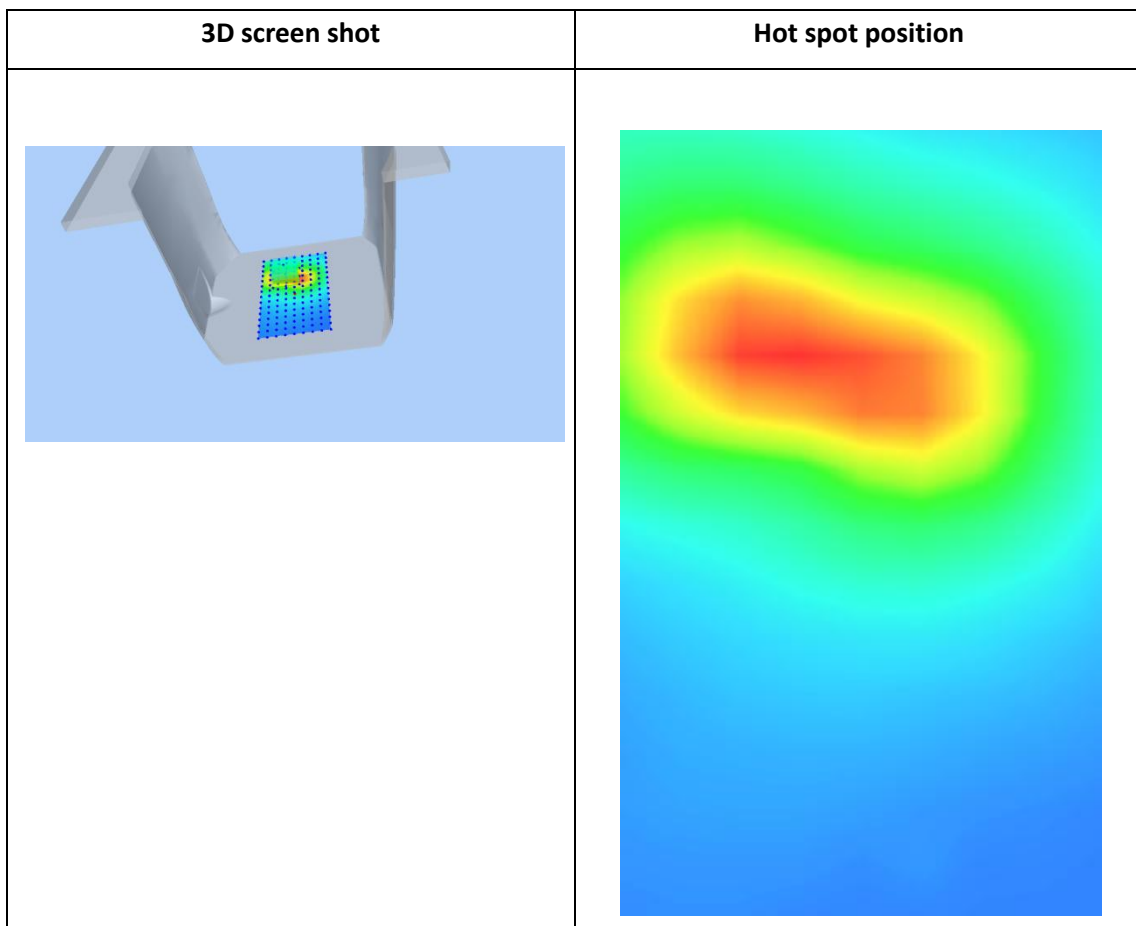
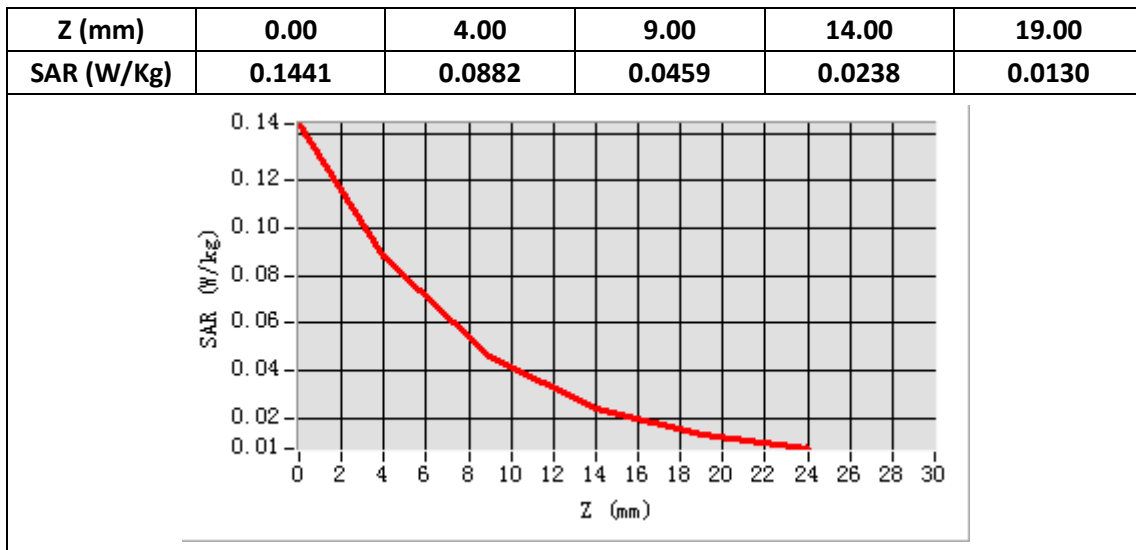
E-Field Probe	SATIMO SN_04/13_EP166
Frequency (MHz)	2437
Relative permittivity (real part)	52.74
Relative permittivity (imaginary part)	14.54
Conductivity (S/m)	1.98
Variation (%)	-0.88
ConvF:	5.56



Maximum location: X=10.00, Y=28.00

SAR Peak: 0.14W/kg

SAR 10g (W/Kg)	0.044719
SAR 1g (W/Kg)	0.088307



Plot 21: Bluetooth, Left Cheek, Middle

Type: Phone measurement

Date of measurement: 1/25/2019

Measurement duration: 22 minutes 16 seconds

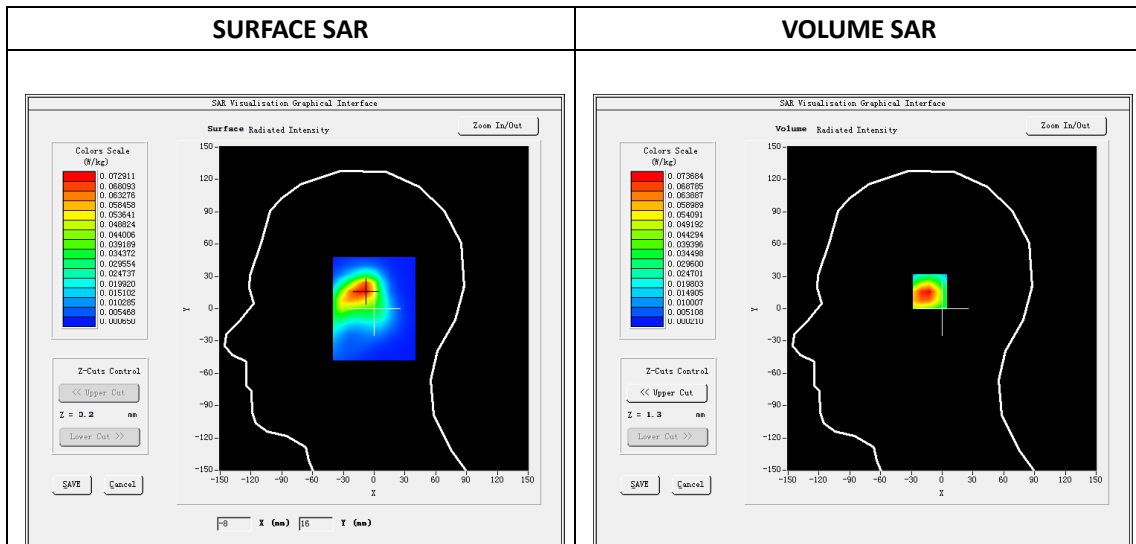
Mobile Phone IMEI number: --

A. Experimental conditions.

Area Scan	dx=8mm dy=8mm
ZoomScan	5x5x7,dx=8mm dy=8mm dz=5mm
Phantom	Validation plane
Device Position	Left Cheek
Band	Bluetooth
Channels	39
Signal	OFDM (Duty cycle: 1:1)

B. SAR Measurement Results

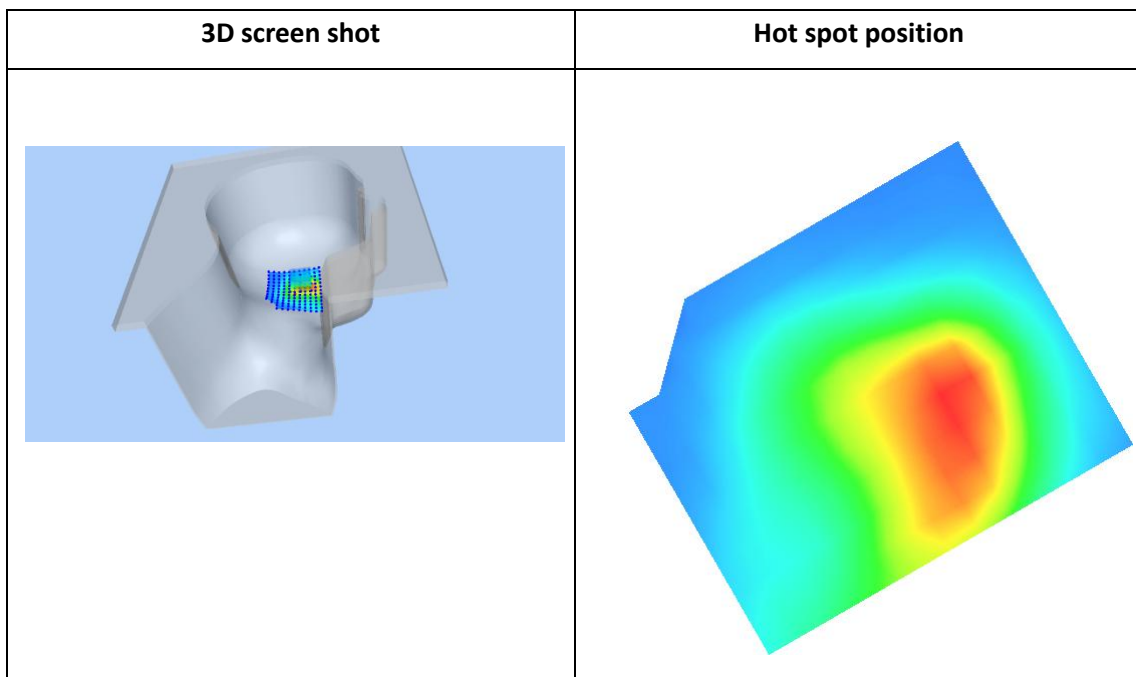
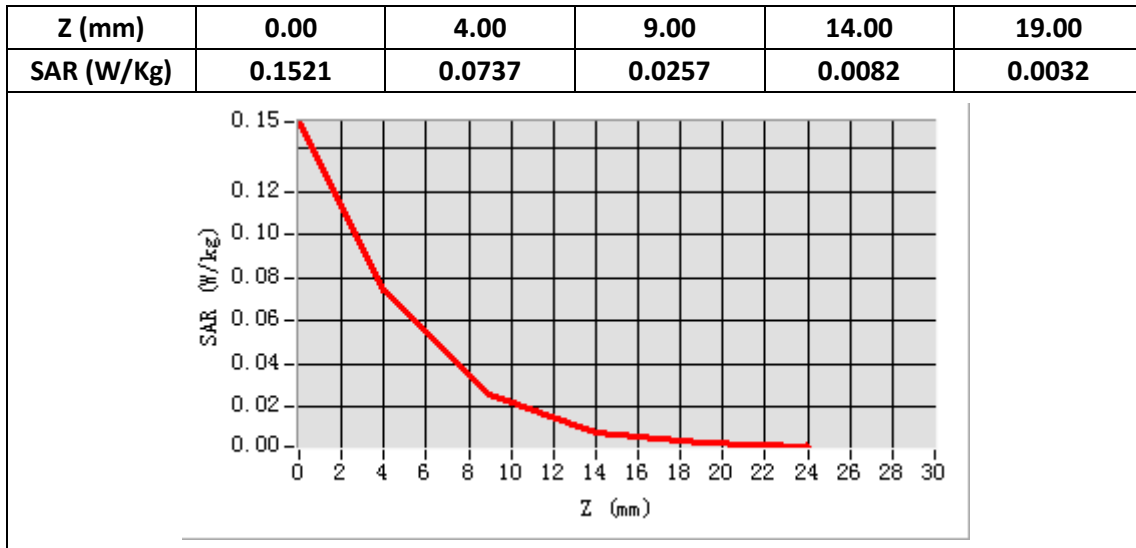
E-Field Probe	SATIMO SN_04/13_EP166
Frequency (MHz)	2441
Relative permittivity (real part)	39.25
Relative permittivity (imaginary part)	13.44
Conductivity (S/m)	1.83
Variation (%)	-0.90
ConvF:	5.35



Maximum location: X=-10.00, Y=17.00

SAR Peak: 0.16W/kg

SAR 10g (W/Kg)	0.032895
SAR 1g (W/Kg)	0.076653



Plot 22: Bluetooth, Back ,Middle ,10mm

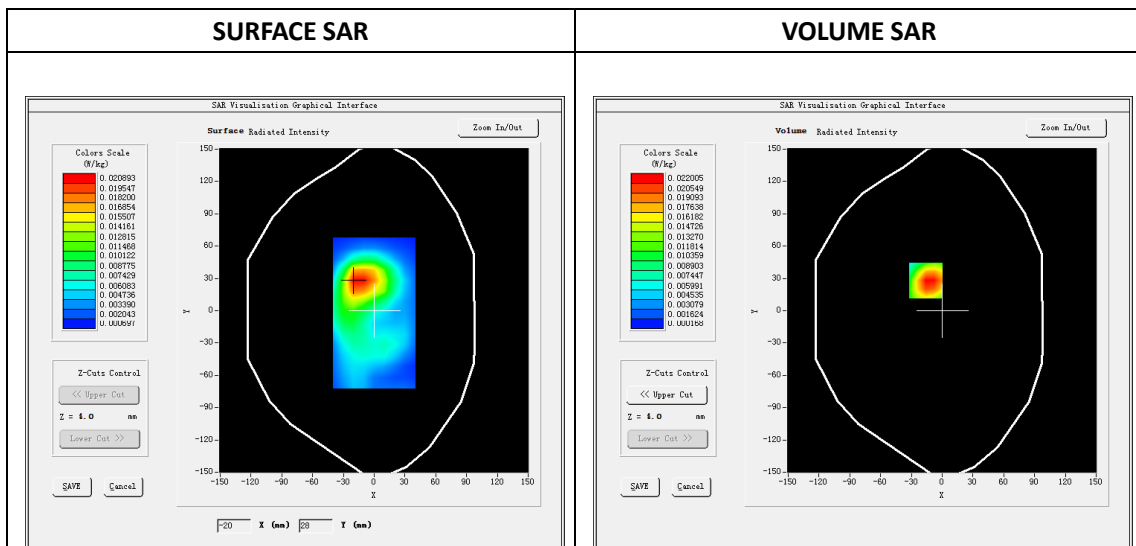
Type: Phone measurement
 Date of measurement:01/25/2019
 Measurement duration: 22 minutes 31 seconds
 Mobile Phone IMEI number: --

A. Experimental conditions.

Area Scan	dx=8mm dy=8mm
ZoomScan	5x5x7,dx=8mm dy=8mm dz=5mm
Phantom	Validation plane
Device Position	Back
Band	Bluetooth
Channels	39
Signal	OFDM (Duty cycle: 1:1)

B. SAR Measurement Results

E-Field Probe	SATIMO SN_04/13_EP166
Frequency (MHz)	2441
Relative permittivity (real part)	52.74
Relative permittivity (imaginary part)	14.54
Conductivity (S/m)	1.98
Variation (%)	0.64
ConvF:	5.56



Maximum location: X=-16.00, Y=28.00

SAR Peak: 0.05W/kg

SAR 10g (W/Kg)	0.010612
SAR 1g (W/Kg)	0.023044

