

Appendix B: SAR Measurement results Plots

Plot	Frequency/Mode	Testing Position and Channel	Test Date
1	GSM850	Right Cheek Middle	2020/02/20
2	GSM850/GPRS4Tx	Body Back, Middle ,10mm	2020/02/20
3	GSM1900	Left Cheek Middle	2020/02/22
4	GSM1900/GPRS4Tx	Body Back, Middle ,10mm	2020/02/22
5	WCDMA1900	Left Cheek Middle	2020/02/22
6	WCDMA1900	Body Back, Middle ,10mm	2020/02/22
7	WCDMA850	Left Cheek Middle	2020/02/20
8	WCDMA850	Body Back, Middle ,10mm	2020/02/20
9	LTE Band2	Left Cheek Middle	2020/02/22
10	LTE Band2	Body Back, Middle ,10mm	2020/02/22
11	LTE Band4	Left Cheek Middle	2020/02/21
12	LTE Band4	Body Back, Middle ,10mm	2020/02/21
13	LTE Band5	Right Cheek Middle	2020/02/20
14	LTE Band5	Body Back, Middle ,10mm	2020/02/20
15	LTE Band12	Right Cheek Middle	2020/02/19
16	LTE Band12	Body Back, Middle ,10mm	2020/02/19
17	LTE Band13	Right Cheek Middle	2020/02/19
18	LTE Band13	Body Back, Middle ,10mm	2020/02/19
19	LTE Band17	Right Cheek Middle	2020/02/19
20	LTE Band17	Body Back, Middle ,10mm	2020/02/19
21	WIFI 2.4G 802.11b	Left Cheek Middle	2020/02/24
22	WIFI 2.4G 802.11b	Body Back, Middle ,10mm	2020/02/24
23			
24			
25			
35			
36			
37			
38			
39			

Plot 1: GSM850, Right Cheek, Middle

Type: Phone measurement

Date of measurement: 02/20/2020

Measurement duration: 22 minutes 06 seconds

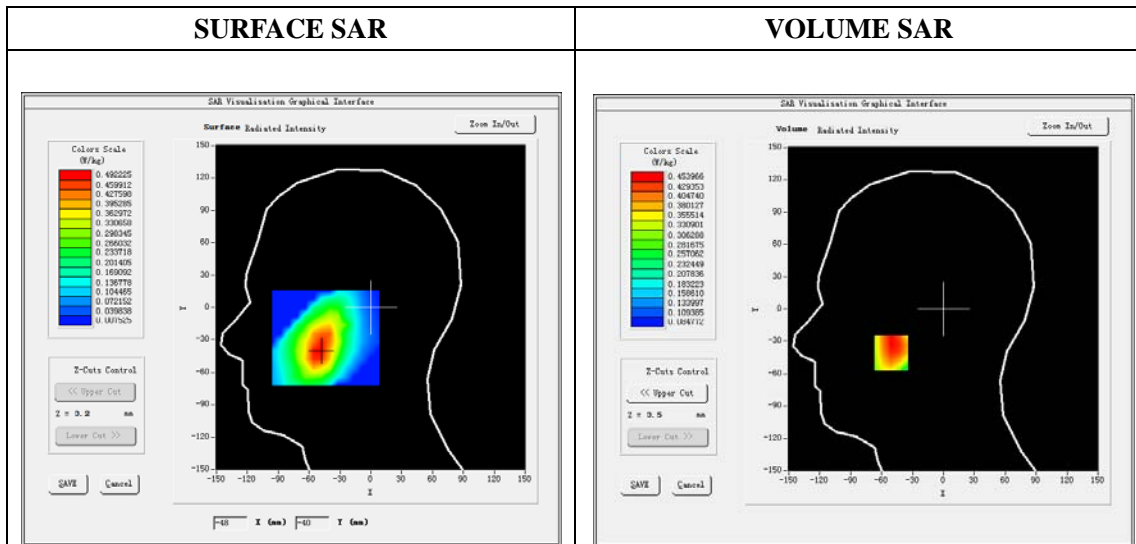
Mobile Phone IMEI number: --

A. Experimental conditions.

Area Scan	dx=8mm dy=8mm
ZoomScan	5x5x7,dx=8mm dy=8mm dz=5mm
Phantom	Validation plane
Device Position	Right Cheek
Band	GSM850
Channels	190
Signal	GSM (Duty cycle: 1:8.3)

B. SAR Measurement Results

E-Field Probe	SATIMO SN_41/18 EPGO330
Frequency (MHz)	836.6
Relative permittivity (real part)	41.56
Relative permittivity (imaginary part)	20.91
Conductivity (S/m)	0.97
Variation (%)	-3.47
ConvF:	1.60

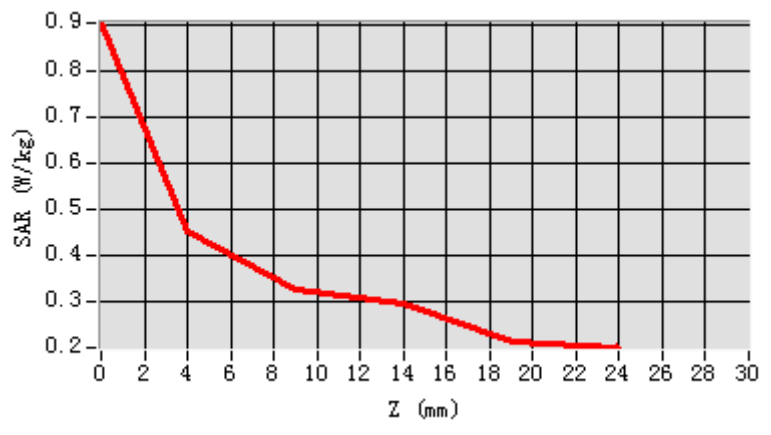


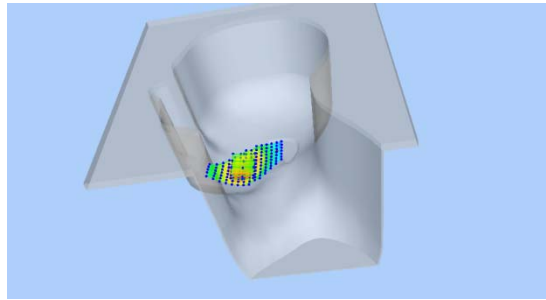
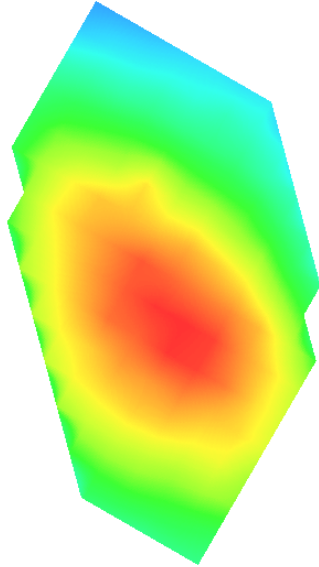
Maximum location: X=-51.00, Y=-41.00

SAR Peak: 0.56 W/kg

SAR 10g (W/Kg)	0.335470
SAR 1g (W/Kg)	0.441531

Z (mm)	0.00	4.00	9.00	14.00	19.00
SAR (W/Kg)	0.9035	0.4540	0.3265	0.2977	0.2157



3D screen shot	Hot spot position
	

Plot 2: GPRS850, Back, Middle,10mm

Type: Phone measurement

Date of measurement: 02/20/2020

Measurement duration: 22 minutes 11 seconds

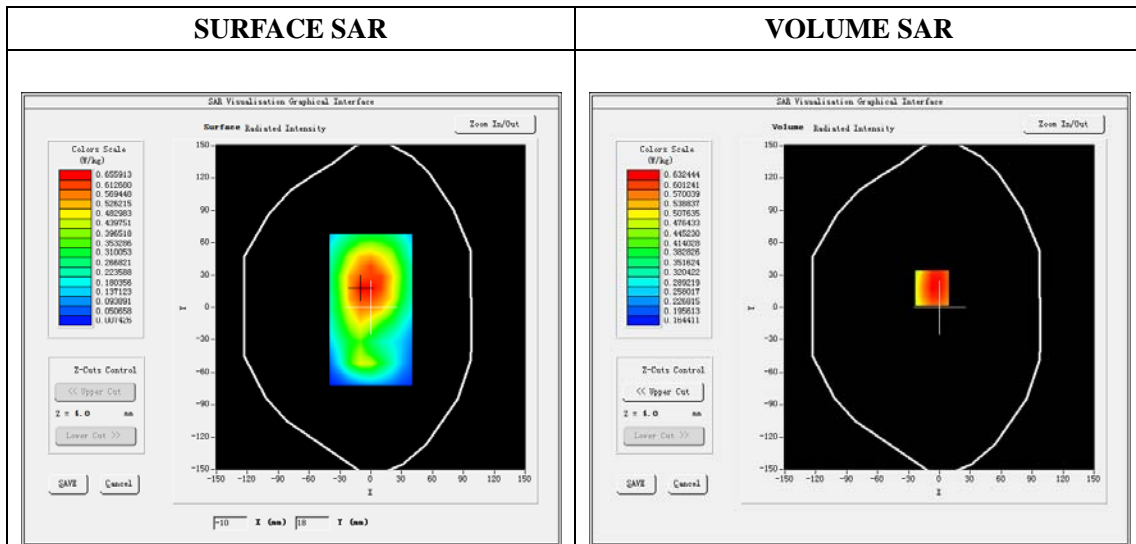
Mobile Phone IMEI number: --

A. Experimental conditions.

Area Scan	dx=8mm dy=8mm
ZoomScan	5x5x7,dx=8mm dy=8mm dz=5mm
Phantom	Validation plane
Device Position	Back
Band	GSPRS850_4Tx
Channels	190
Signal	GPRS(Duty cycle: 1:2)

B. SAR Measurement Results

E-Field Probe	SATIMO SN_41/18 EPGO330
Frequency (MHz)	836.6
Relative permittivity (real part)	55.30
Relative permittivity (imaginary part)	21.34
Conductivity (S/m)	0.99
Variation (%)	-2.64
ConvF:	1.64

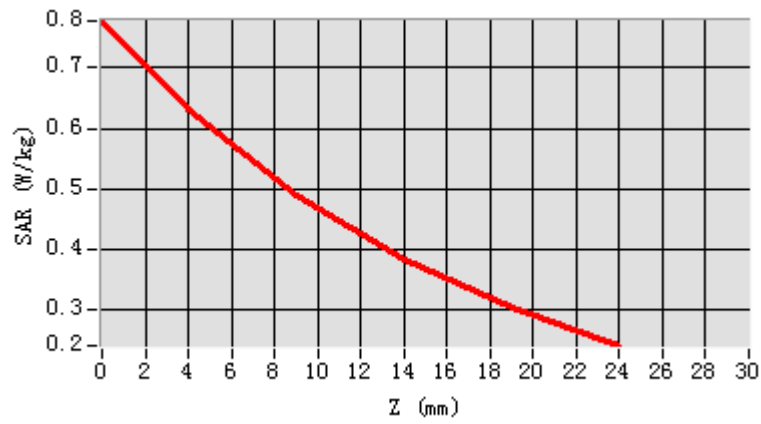


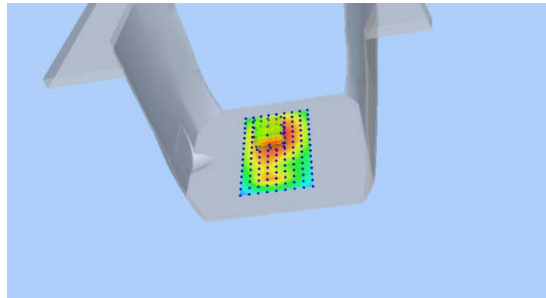
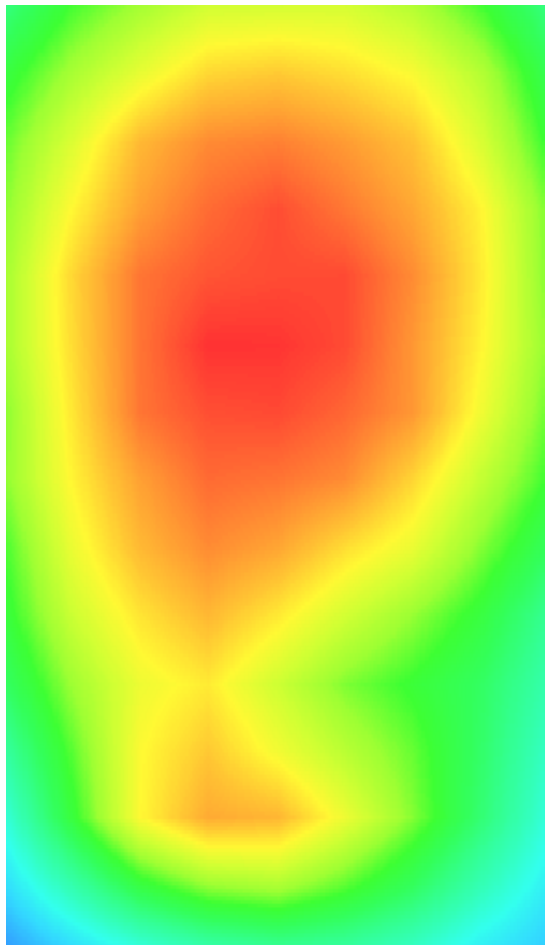
Maximum location: X=-7.00, Y=18.00

SAR Peak: 0.78 W/kg

SAR 10g (W/Kg)	0.475456
SAR 1g (W/Kg)	0.629016

Z (mm)	0.00	4.00	9.00	14.00	19.00
SAR (W/Kg)	0.7766	0.6324	0.4908	0.3850	0.3058



3D screen shot	Hot spot position
	

Plot 3: GSM1900, Left Cheek, Middle

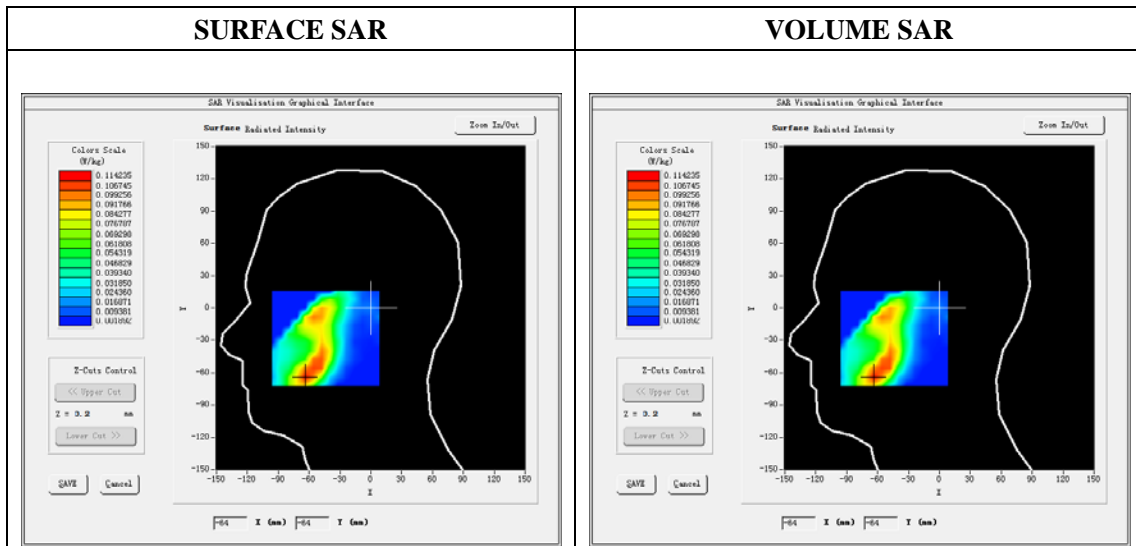
Type: Phone measurement
 Date of measurement: 02/22/2020
 Measurement duration: 22 minutes 08 seconds
 Mobile Phone IMEI number: --

A. Experimental conditions.

Area Scan	dx=8mm dy=8mm
Zoom Scan	5x5x7,dx=8mm dy=8mm dz=5mm
Phantom	Validation plane
Device Position	Left Cheek
Band	GSM1900
Channels	661
Signal	GSM (Duty cycle: 1:8.3)

B. SAR Measurement Results

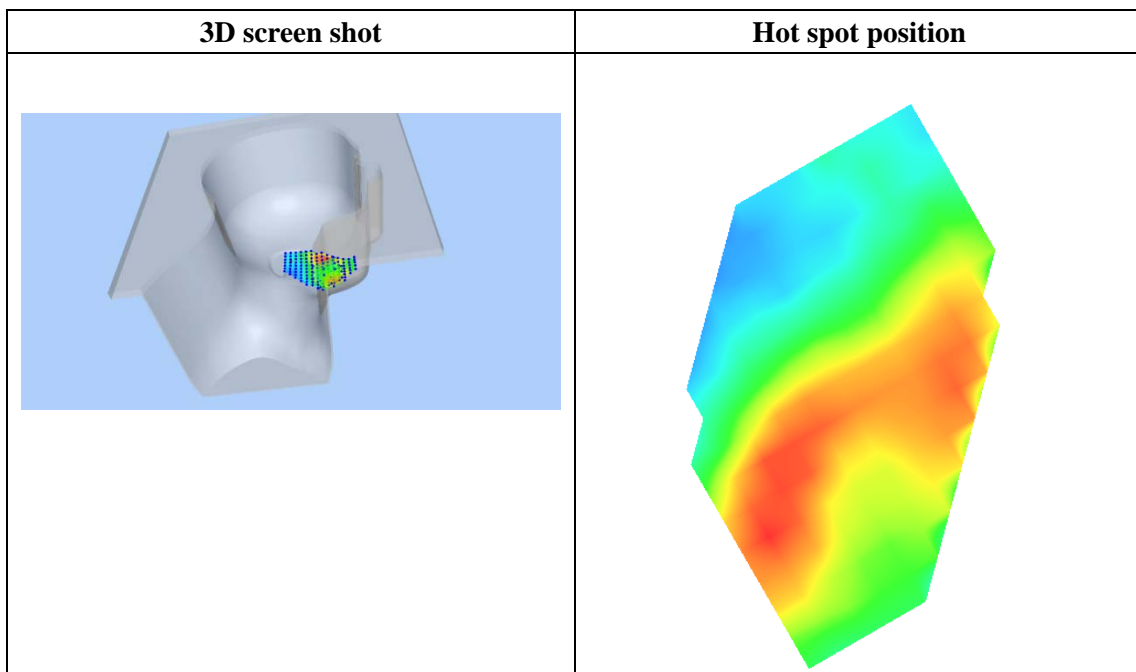
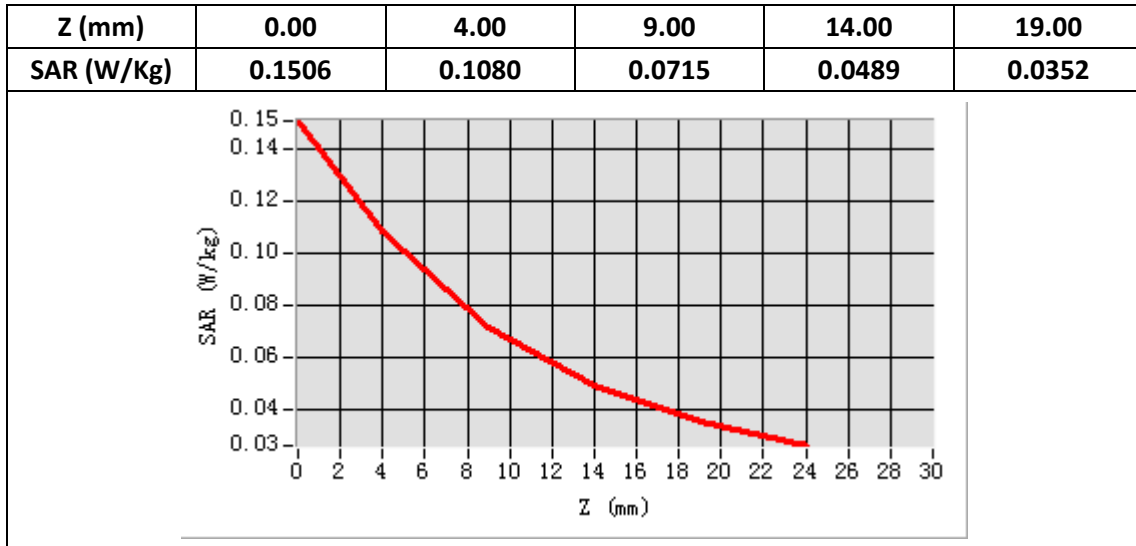
E-Field Probe	SATIMO SN_41/18 EPGO330
Frequency (MHz)	1880
Relative permittivity (real part)	40.33
Relative permittivity (imaginary part)	13.26
Conductivity (S/m)	1.40
Variation (%)	-2.22
ConvF:	2.03



Maximum location: X=-63.00, Y=-63.00

SAR Peak: 0.15 W/kg

SAR 10g (W/Kg)	0.062106
SAR 1g (W/Kg)	0.100249



Plot 4: GPRS1900, Back, Middle ,10mm

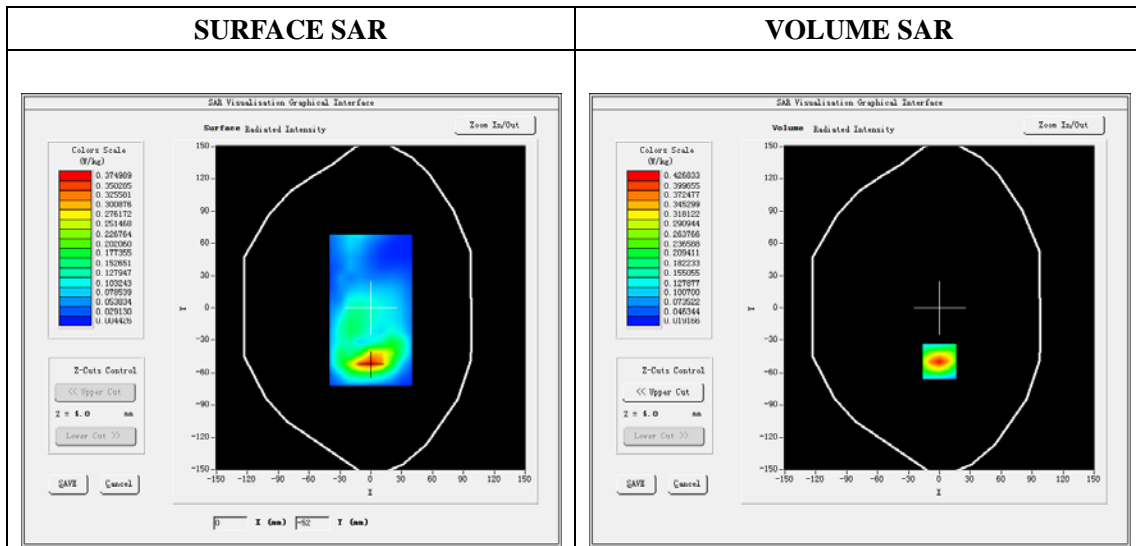
Type: Phone measurement
 Date of measurement: 02/22/2020
 Measurement duration: 22 minutes 05 seconds
 Mobile Phone IMEI number: --

A. Experimental conditions.

Area Scan	dx=8mm dy=8mm
Zoom Scan	5x5x7,dx=8mm dy=8mm dz=5mm
Phantom	Validation plane
Device Position	Back
Band	GPRS1900_4Tx
Channels	661
Signal	GPRS(Duty cycle: 1:2)

B. SAR Measurement Results

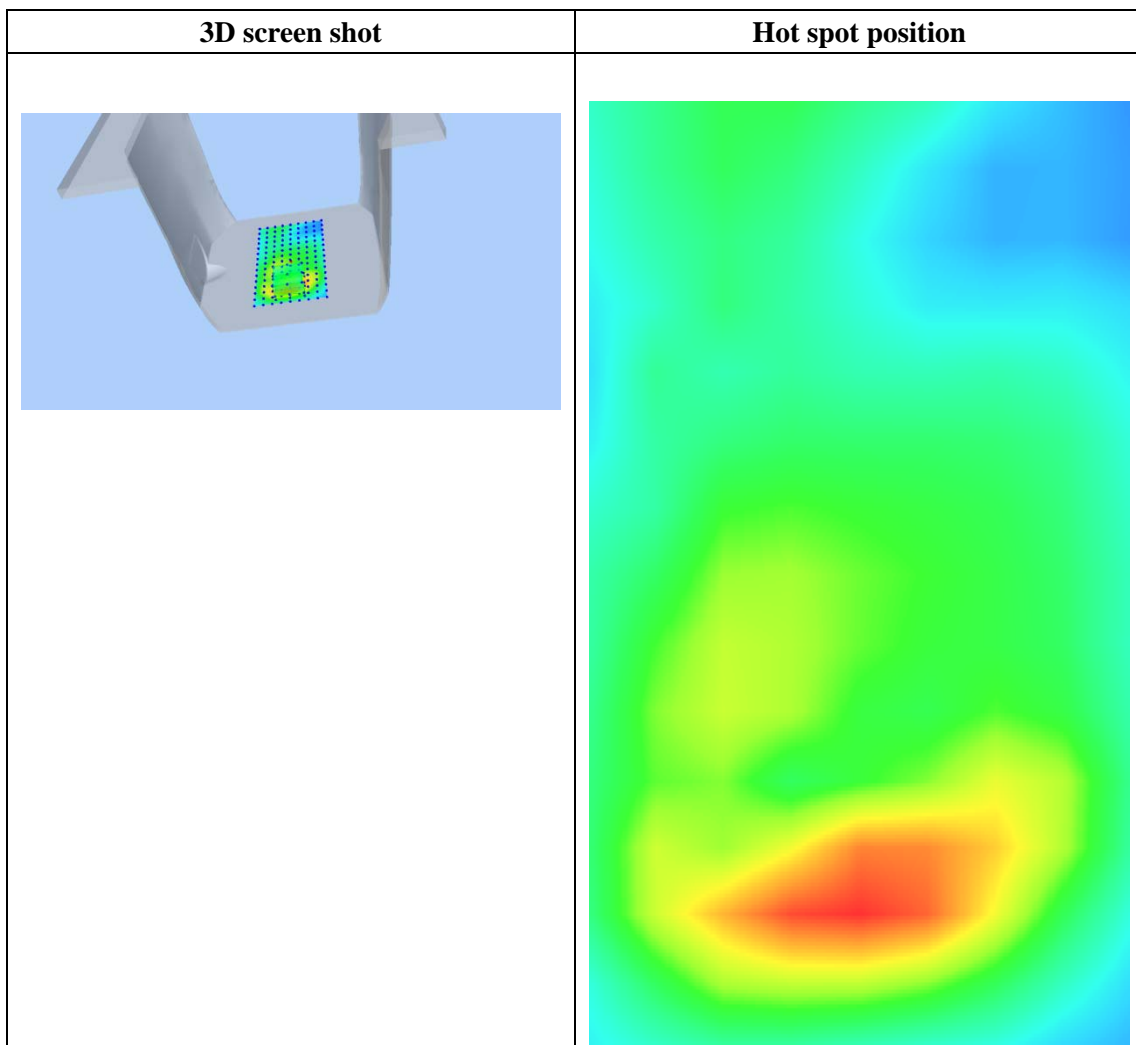
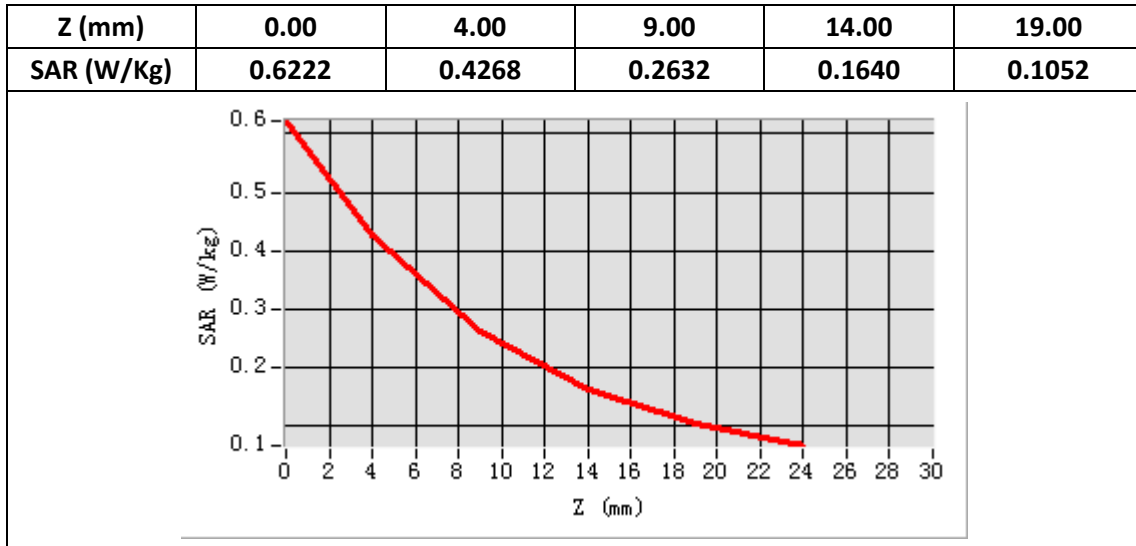
E-Field Probe	SATIMO SN_41/18 EPGO330
Frequency (MHz)	1880
Relative permittivity (real part)	53.29
Relative permittivity (imaginary part)	14.40
Conductivity (S/m)	1.52
Variation (%)	-4.93
ConvF:	2.08



Maximum location: X=0.00, Y=-50.00

SAR Peak: 0.62 W/kg

SAR 10g (W/Kg)	0.211182
SAR 1g (W/Kg)	0.390885



Plot 5: WCDMA1900, Left Cheek, Middle,10mm

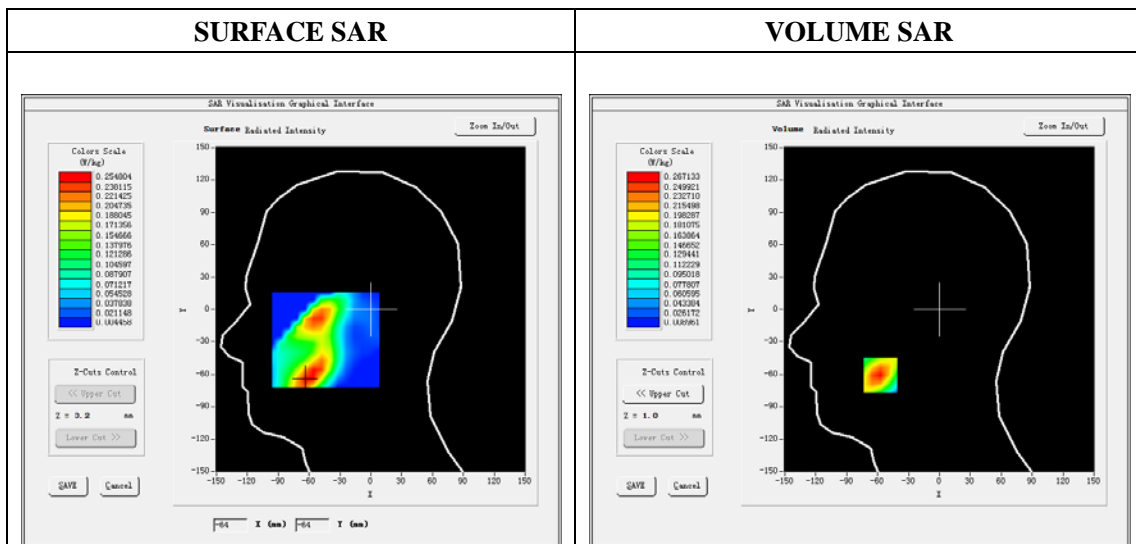
Type: Phone measurement
 Date of measurement: 02/22/2020
 Measurement duration: 22 minutes 12 seconds
 Mobile Phone IMEI number: --

A. Experimental conditions.

Area Scan	dx=8mm dy=8mm
ZoomScan	5x5x7,dx=8mm dy=8mm dz=5mm
Phantom	Validation plane
Device Position	Left Cheek
Band	Band2_WCDMA1900
Channels	9400
Signal	WCDMA (Duty cycle: 1:1)

B. SAR Measurement Results

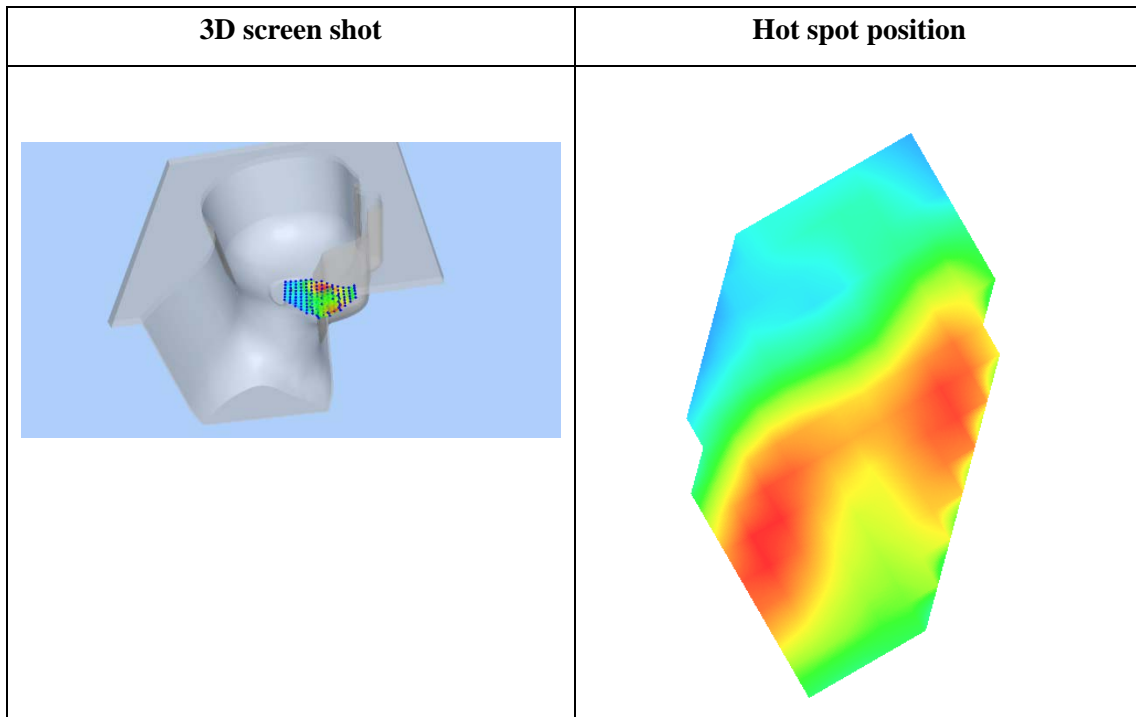
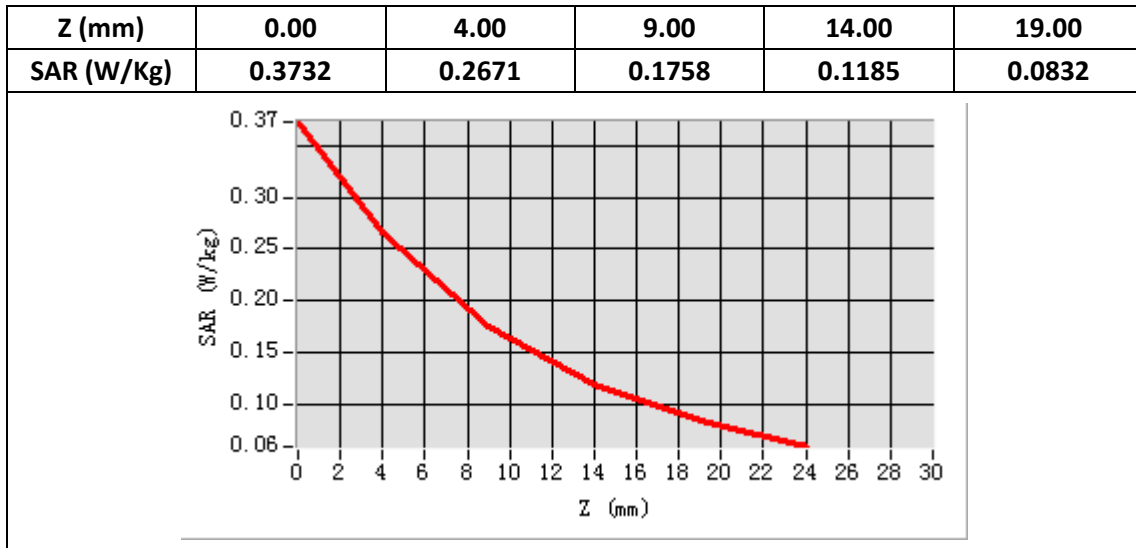
E-Field Probe	SATIMO SN_41/18 EPGO330
Frequency (MHz)	1880
Relative permittivity (real part)	40.33
Relative permittivity (imaginary)	13.26
Conductivity (S/m)	1.40
Variation (%)	-4.87
ConvF:	2.03



Maximum location: X=-57.00, Y=-61.00

SAR Peak: 0.37W/kg

SAR 10g (W/Kg)	0.154055
SAR 1g (W/Kg)	0.251953



Plot 6: WCDMA1900, Back, Middle,10mm

Type: Phone measurement

Date of measurement: 02/22/2020

Measurement duration: 22 minutes 08 seconds

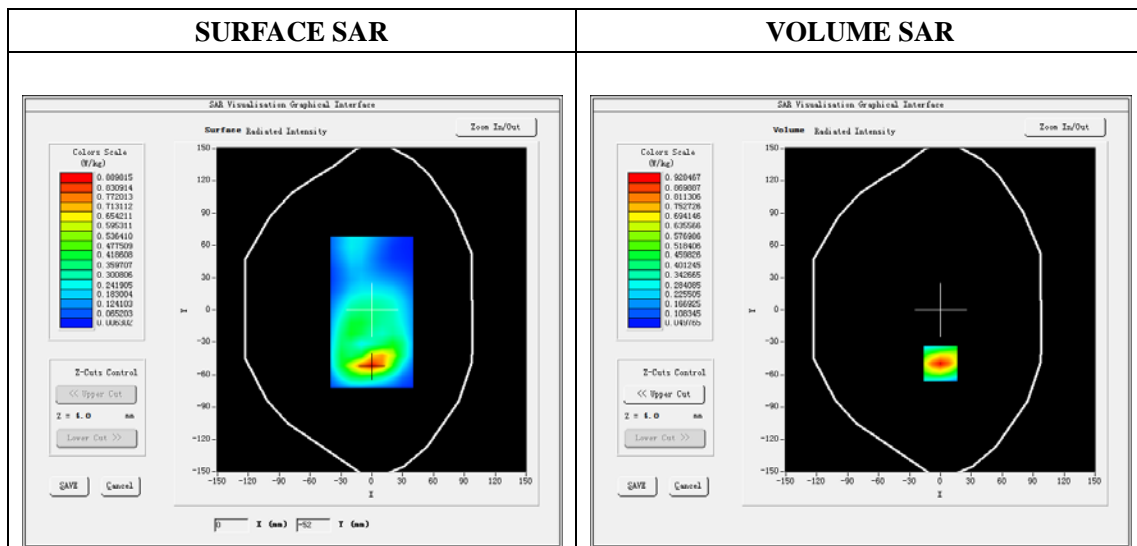
Mobile Phone IMEI number: --

A. Experimental conditions.

Area Scan	dx=8mm dy=8mm
ZoomScan	5x5x7,dx=8mm dy=8mm dz=5mm
Phantom	Validation plane
Device Position	Back
Band	Band2_WCDMA1900
Channels	9400
Signal	WCDMA (Duty cycle: 1:1)

B. SAR Measurement Results

E-Field Probe	SATIMO SN_41/18 EPGO330
Frequency (MHz)	1880
Relative permittivity (real part)	53.29
Relative permittivity (imaginary)	14.40
Conductivity (S/m)	1.52
Variation (%)	-0.89
ConvF:	2.08

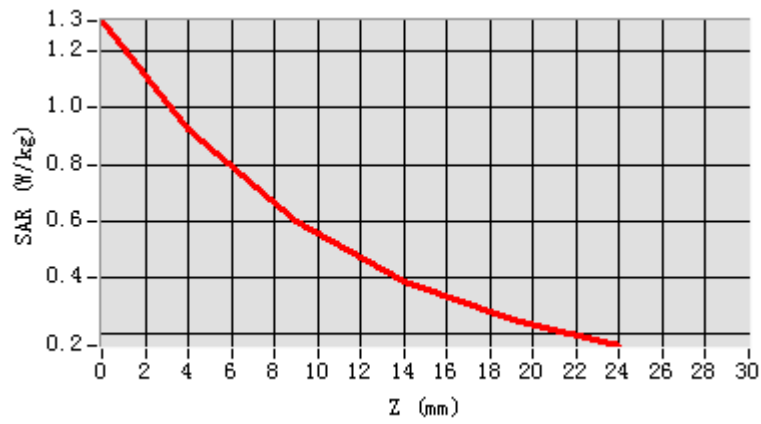


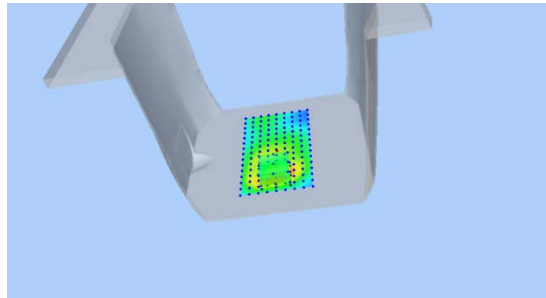
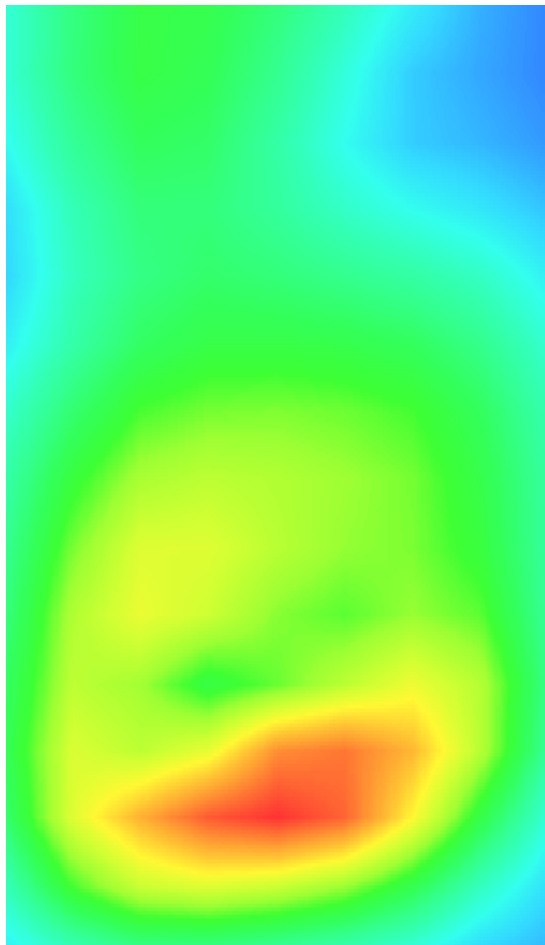
Maximum location: X=0.00, Y=-50.00

SAR Peak: 1.31W/kg

SAR 10g (W/Kg)	0.483299
SAR 1g (W/Kg)	0.855722

Z (mm)	0.00	4.00	9.00	14.00	19.00
SAR (W/Kg)	1.3092	0.9285	0.5968	0.3841	0.2498



3D screen shot	Hot spot position
	

Plot 7: WCDMA850, Left Cheek, Middle

Type: Phone measurement

Date of measurement: 02/20/2020

Measurement duration: 22 minutes 11 seconds

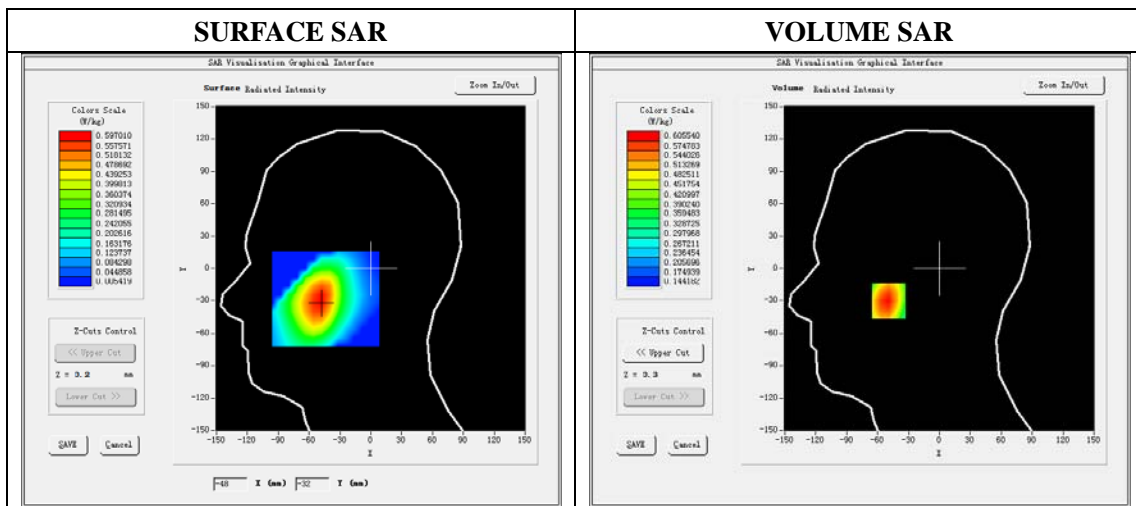
Mobile Phone IMEI number: --

A. Experimental conditions.

Area Scan	dx=8mm dy=8mm
ZoomScan	5x5x7,dx=8mm dy=8mm dz=5mm
Phantom	Validation plane
Device Position	Left Cheek
Band	Band5_WCDMA850
Channels	4183
Signal	WCDMA (Duty cycle: 1:1)

B. SAR Measurement Results

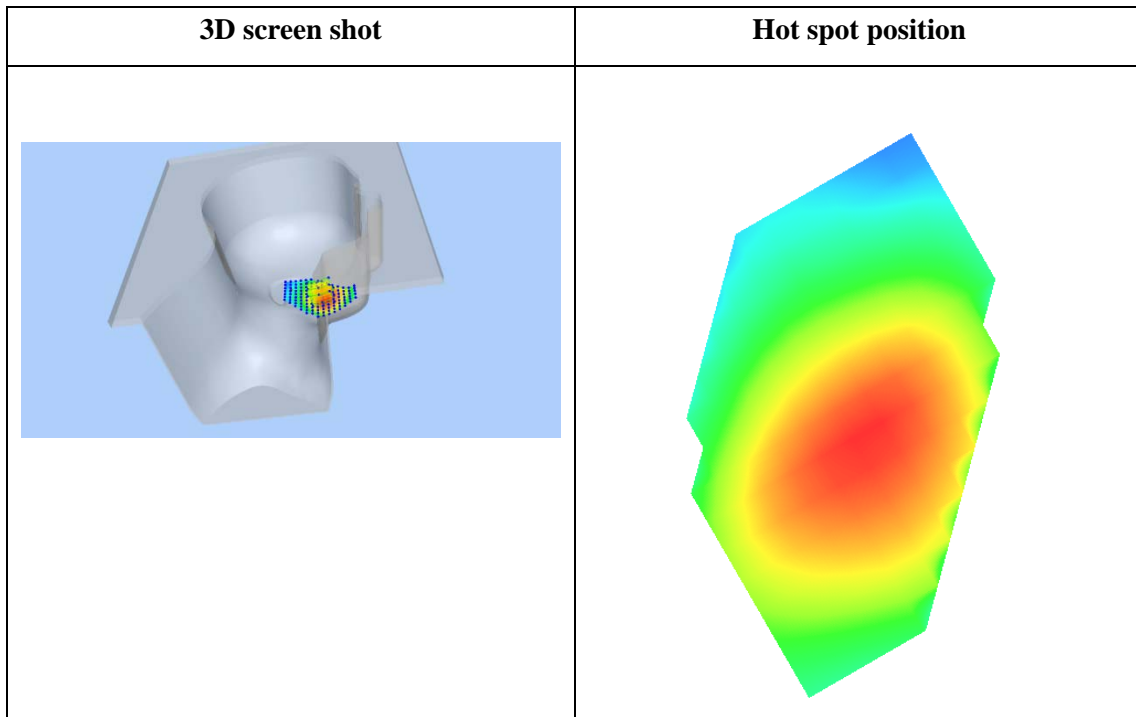
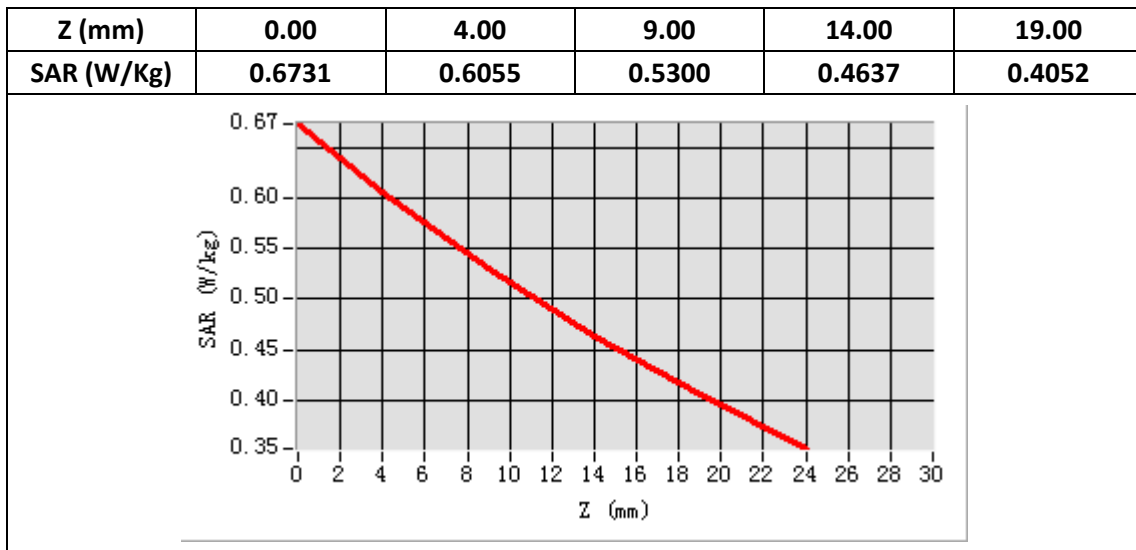
E-Field Probe	SATIMO SN_41/18 EPGO330
Frequency (MHz)	836.6
Relative permittivity (real part)	41.56
Relative permittivity (imaginary)	20.91
Conductivity (S/m)	0.97
Variation (%)	-4.77
ConvF:	1.60



Maximum location: X=-49.00, Y=-30.00

SAR Peak: 0.68W/kg

SAR 10g (W/Kg)	0.475791
SAR 1g (W/Kg)	0.594914



Plot 8: WCDMA850, Back, Middle,10mm

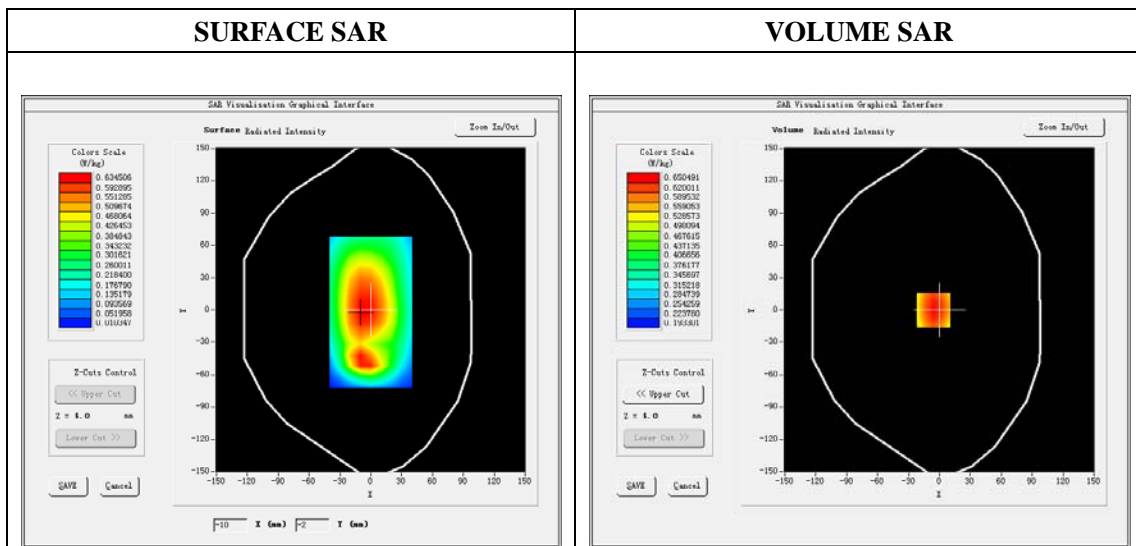
Type: Phone measurement
 Date of measurement: 02/20/2020
 Measurement duration: 22 minutes 09 seconds
 Mobile Phone IMEI number: --

A. Experimental conditions.

Area Scan	dx=8mm dy=8mm
ZoomScan	5x5x7,dx=8mm dy=8mm dz=5mm
Phantom	Validation plane
Device Position	Back
Band	Band5_WCDMA850
Channels	4183
Signal	WCDMA (Duty cycle: 1:1)

B. SAR Measurement Results

E-Field Probe	SATIMO SN_41/18 EPGO330
Frequency (MHz)	836.6
Relative permittivity (real part)	55.30
Relative permittivity (imaginary)	21.34
Conductivity (S/m)	0.99
Variation (%)	-1.06
ConvF:	1.64

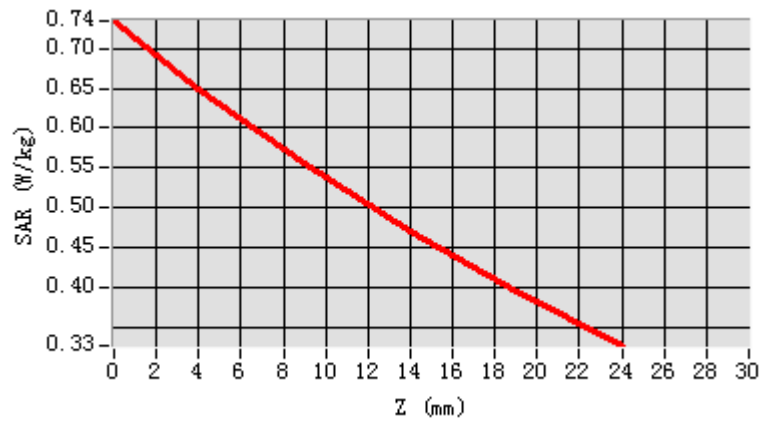


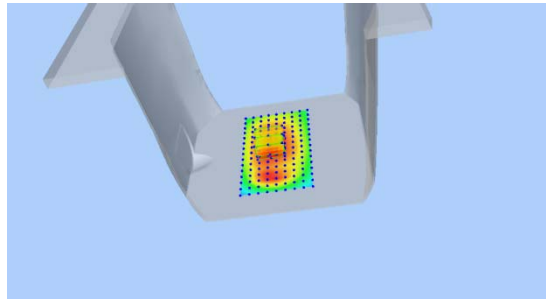
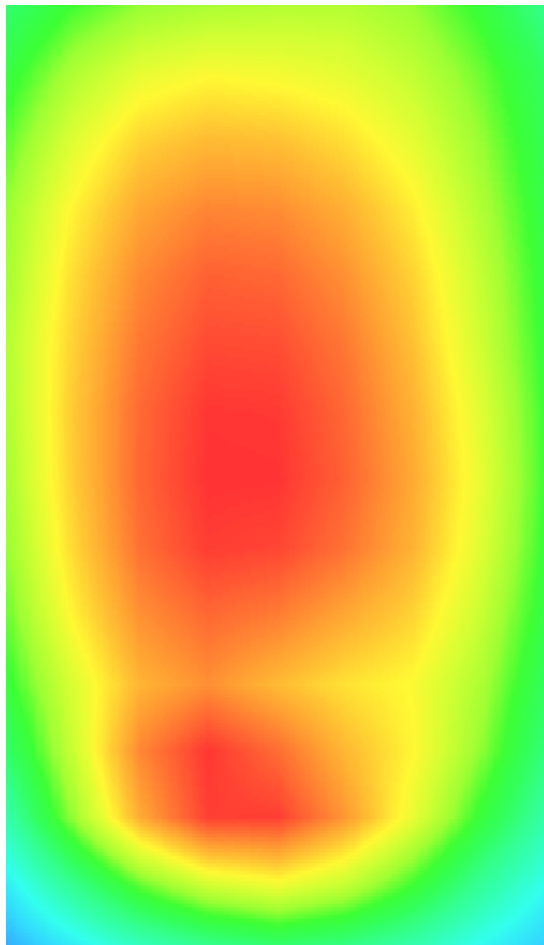
Maximum location: X=-6.00, Y=0.00

SAR Peak: 0.74W/kg

SAR 10g (W/Kg)	0.517704
SAR 1g (W/Kg)	0.644550

Z (mm)	0.00	4.00	9.00	14.00	19.00
SAR (W/Kg)	0.7351	0.6505	0.5548	0.4697	0.3940



3D screen shot	Hot spot position
	

Plot 9: LTE Band2, 20MHz, Left Cheek, Middle

Type: Phone measurement

Date of measurement: 02/22/2020

Measurement duration: 22 minutes 10 Seconds

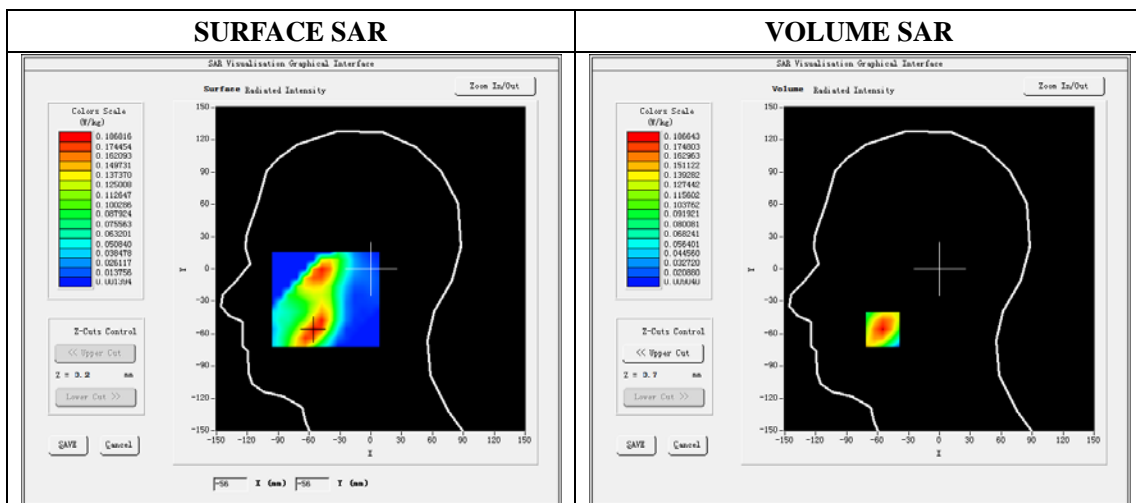
Mobile Phone IMEI number: --

A. Experimental conditions.

Area Scan	dx=8mm dy=8mm
ZoomScan	5x5x7,dx=8mm dy=8mm dz=5mm
Phantom	Validation plane
Device Position	Left Cheek
Band	LTE Band 2
Channels	18900
Signal	LTE (Duty cycle: 1:1)

B. SAR Measurement Results

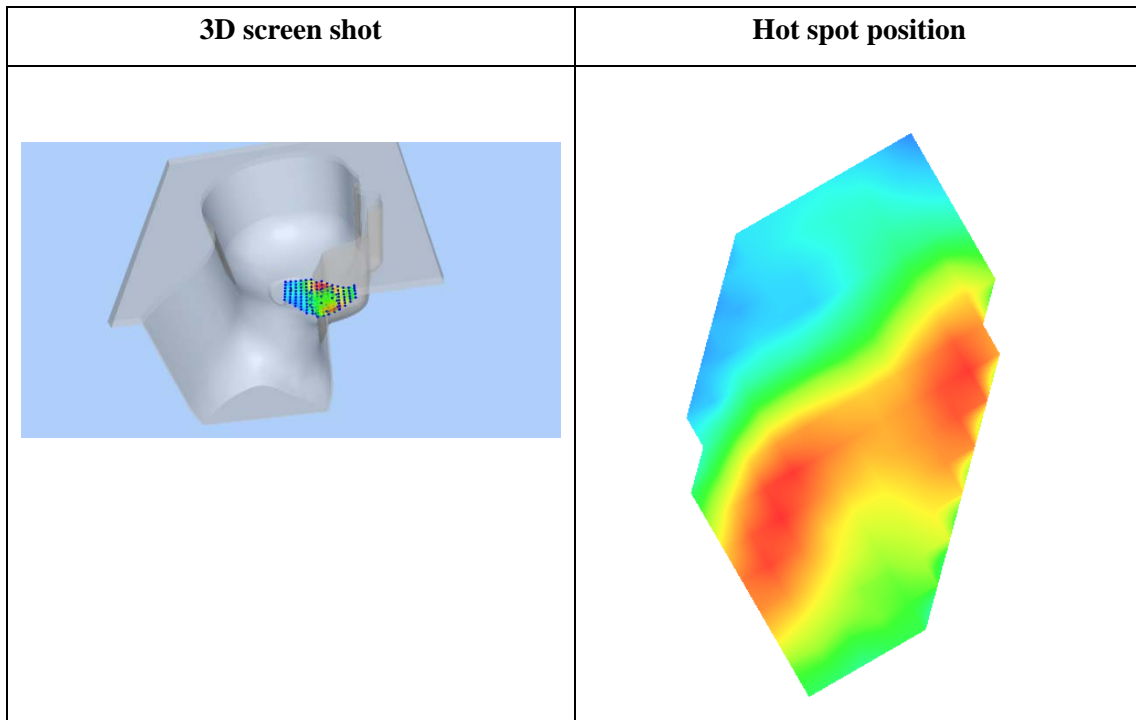
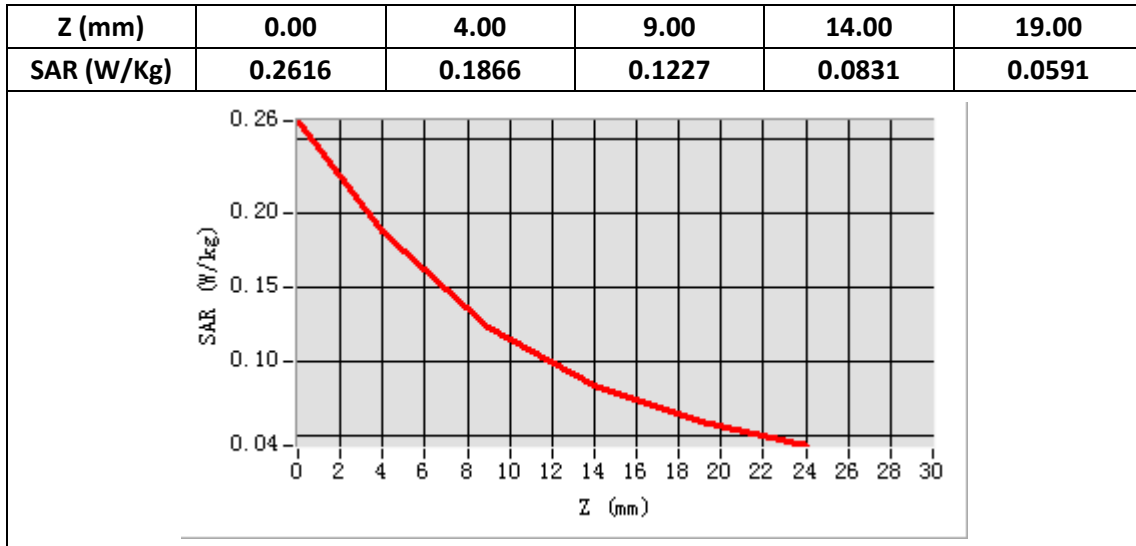
E-Field Probe	SATIMO SN_41/18 EPGO330
Frequency (MHz)	1880
Relative permittivity (real part)	40.33
Relative permittivity (imaginary)	13.26
Conductivity (S/m)	1.40
Variation (%)	-2.60
ConvF:	2.03



Maximum location: X=-55.00, Y=-56.00

SAR Peak: 0.26 W/kg

SAR 10g (W/Kg)	0.111110
SAR 1g (W/Kg)	0.179467



Plot 10: LTE Band2, 20MHz, Back, Middle,10mm

Type: Phone measurement

Date of measurement: 02/22/2020

Measurement duration: 22 minutes 12 seconds

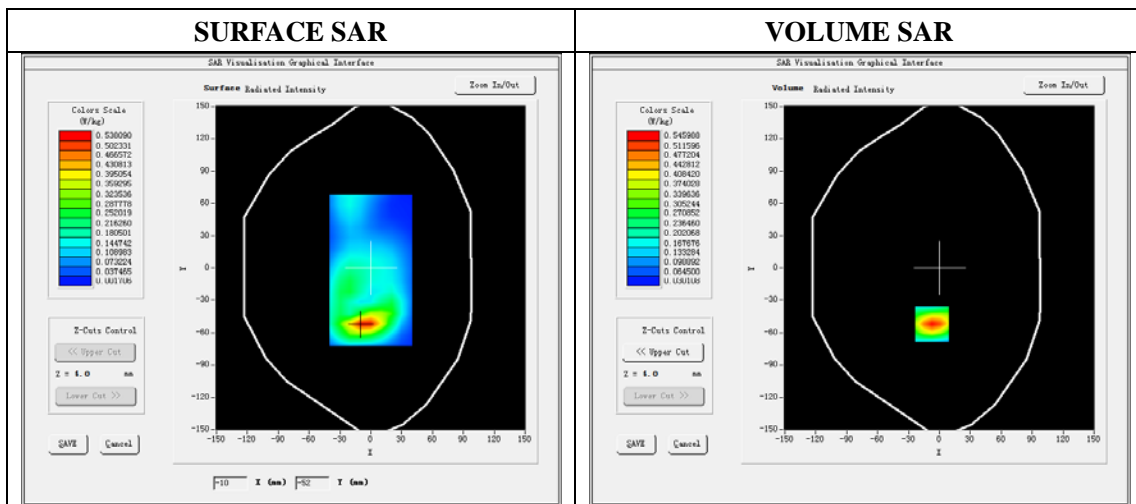
Mobile Phone IMEI number: --

A. Experimental conditions.

Area Scan	dx=8mm dy=8mm
ZoomScan	5x5x7,dx=8mm dy=8mm dz=5mm
Phantom	Validation plane
Device Position	Back
Band	LTE Band 2
Channels	18900
Signal	LTE (Duty cycle: 1:1)

B. SAR Measurement Results

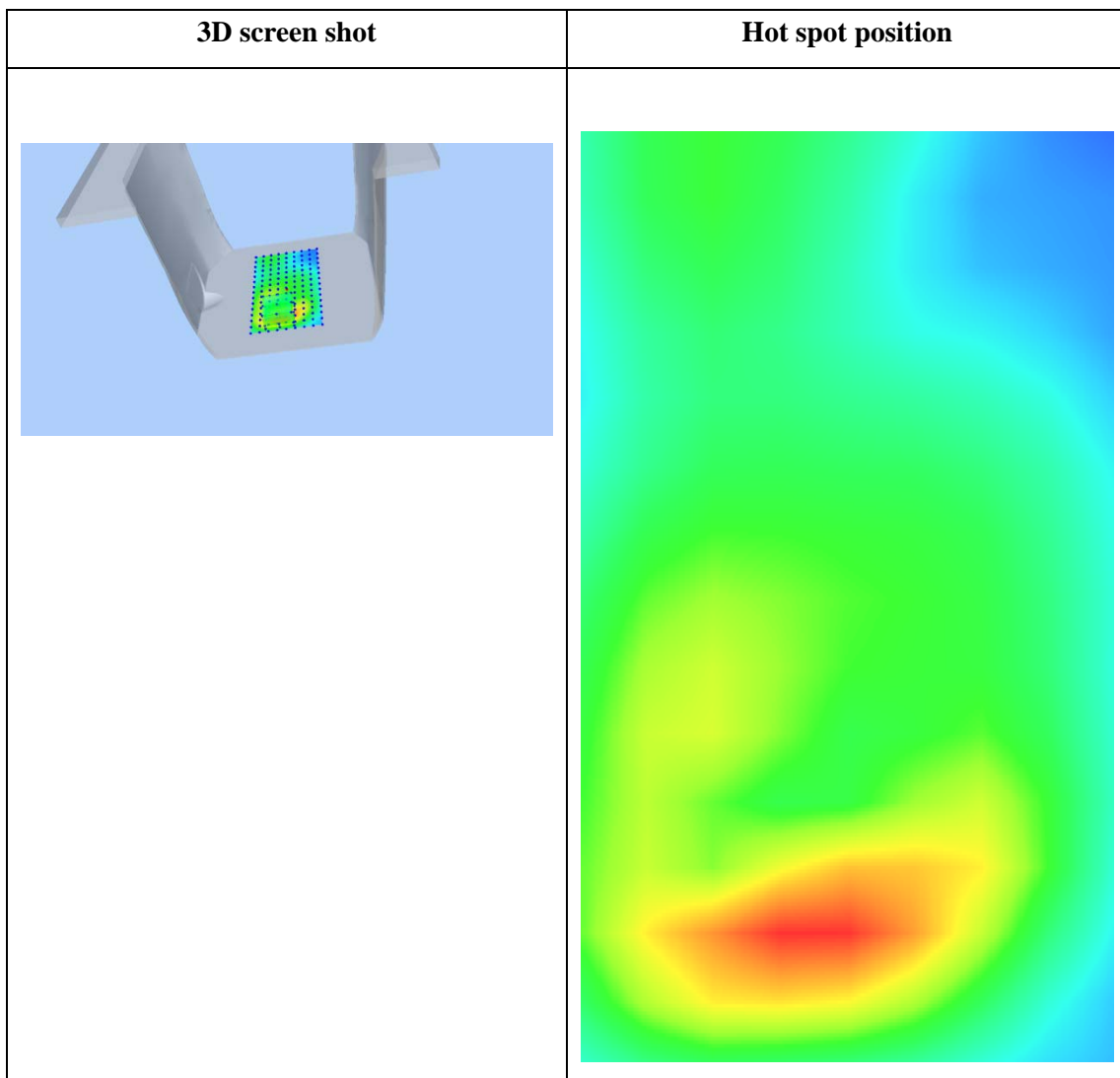
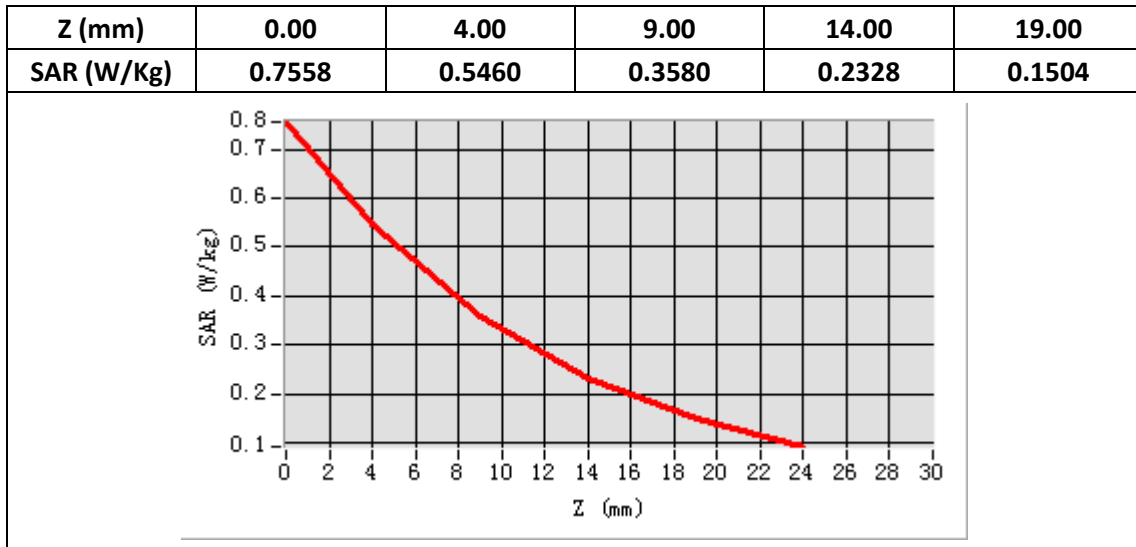
E-Field Probe	SATIMO SN_41/18 EPGO330
Frequency (MHz)	1880
Relative permittivity (real part)	53.29
Relative permittivity (imaginary)	14.40
Conductivity (S/m)	1.52
Variation (%)	1.31
ConvF:	2.08



Maximum location: X=-7.00, Y=-52.00

SAR Peak: 0.76W/kg

SAR 10g (W/Kg)	0.285352
SAR 1g (W/Kg)	0.502757



Plot 11: LTE Band4, 20MHz, Left Cheek, Middle

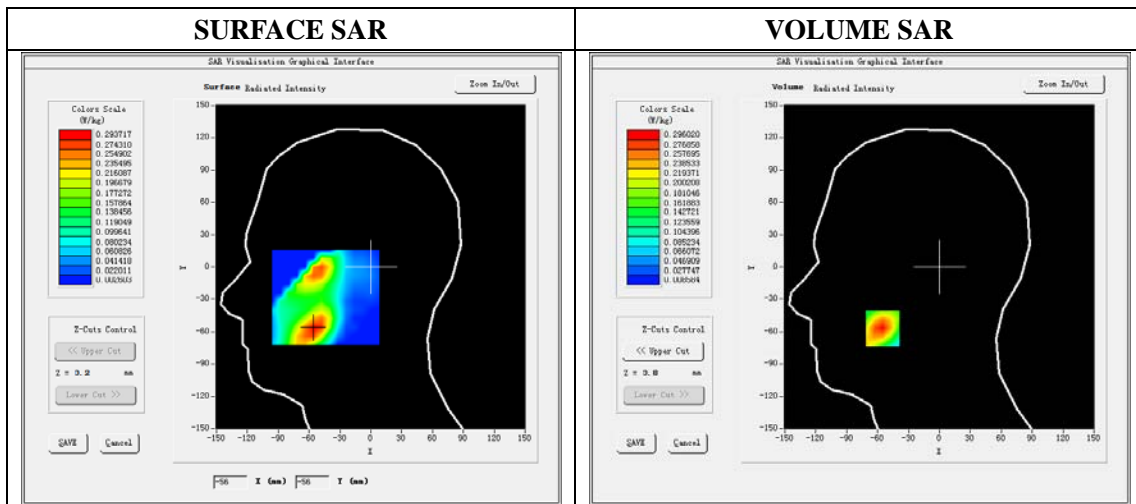
Type: Phone measurement
 Date of measurement: 02/21/2020
 Measurement duration: 22 minutes 14 econds
 Mobile Phone IMEI number: --

A. Experimental conditions.

Area Scan	dx=8mm dy=8mm
ZoomScan	5x5x7,dx=8mm dy=8mm dz=5mm
Phantom	Validation plane
Device Position	Left Cheek
Band	LTE Band 4
Channels	20175
Signal	LTE (Duty cycle: 1:1)

B. SAR Measurement Results

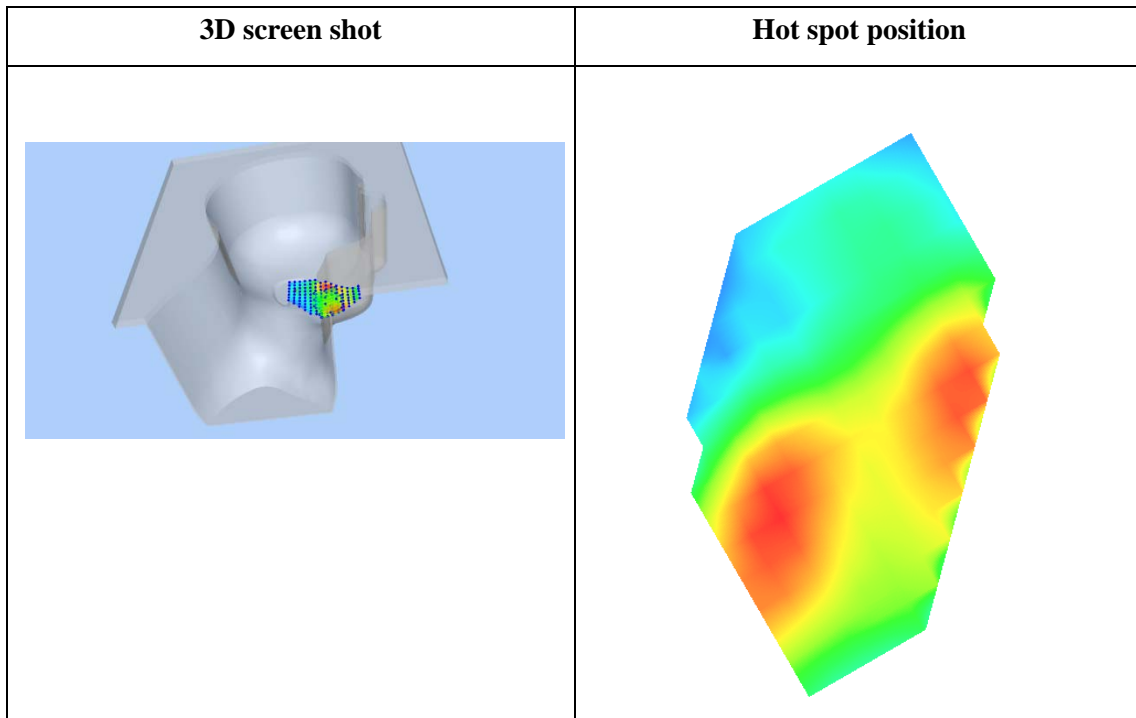
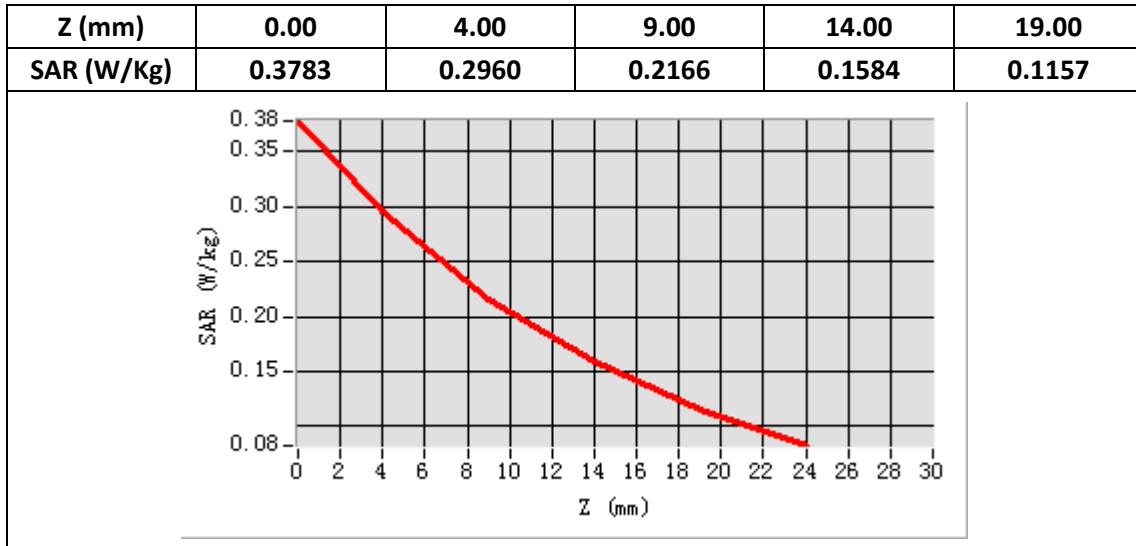
E-Field Probe	SATIMO SN_41/18 EPGO330
Frequency (MHz)	1732.5
Relative permittivity (real part)	40.42
Relative permittivity (imaginary)	13.80
Conductivity (S/m)	1.38
Variation (%)	-3.09
ConvF:	1.74



Maximum location: X=-55.00, Y=-57.00

SAR Peak: 0.38 W/kg

SAR 10g (W/Kg)	0.183620
SAR 1g (W/Kg)	0.284338



Plot 12: LTE Band4, 20MHz, Back, Middle,10mm

Type: Phone measurement

Date of measurement: 02/21/2020

Measurement duration: 22 minutes 14 seconds

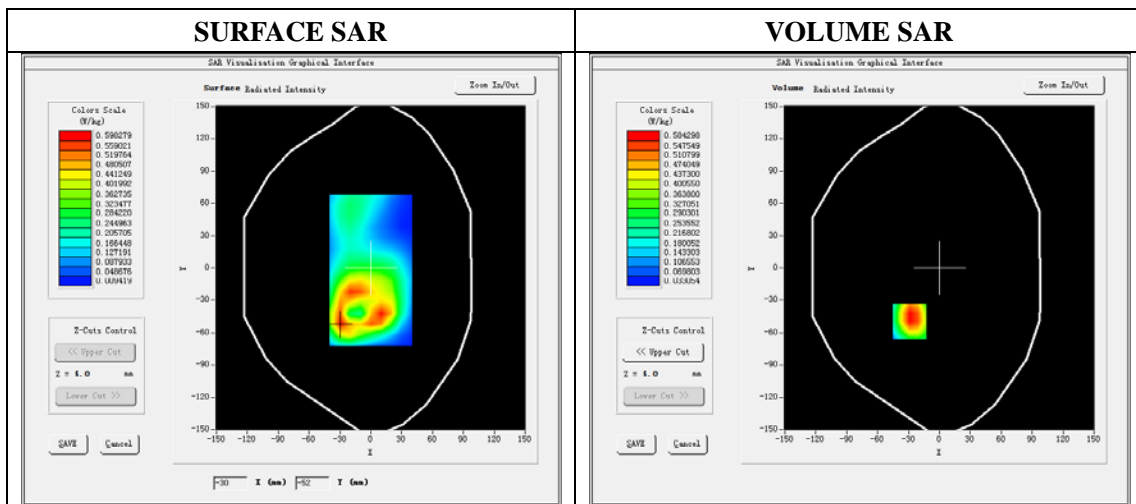
Mobile Phone IMEI number: --

A. Experimental conditions.

Area Scan	dx=8mm dy=8mm
ZoomScan	5x5x7,dx=8mm dy=8mm dz=5mm
Phantom	Validation plane
Device Position	Back
Band	LTE Band 4
Channels	20175
Signal	LTE (Duty cycle: 1:1)

B. SAR Measurement Results

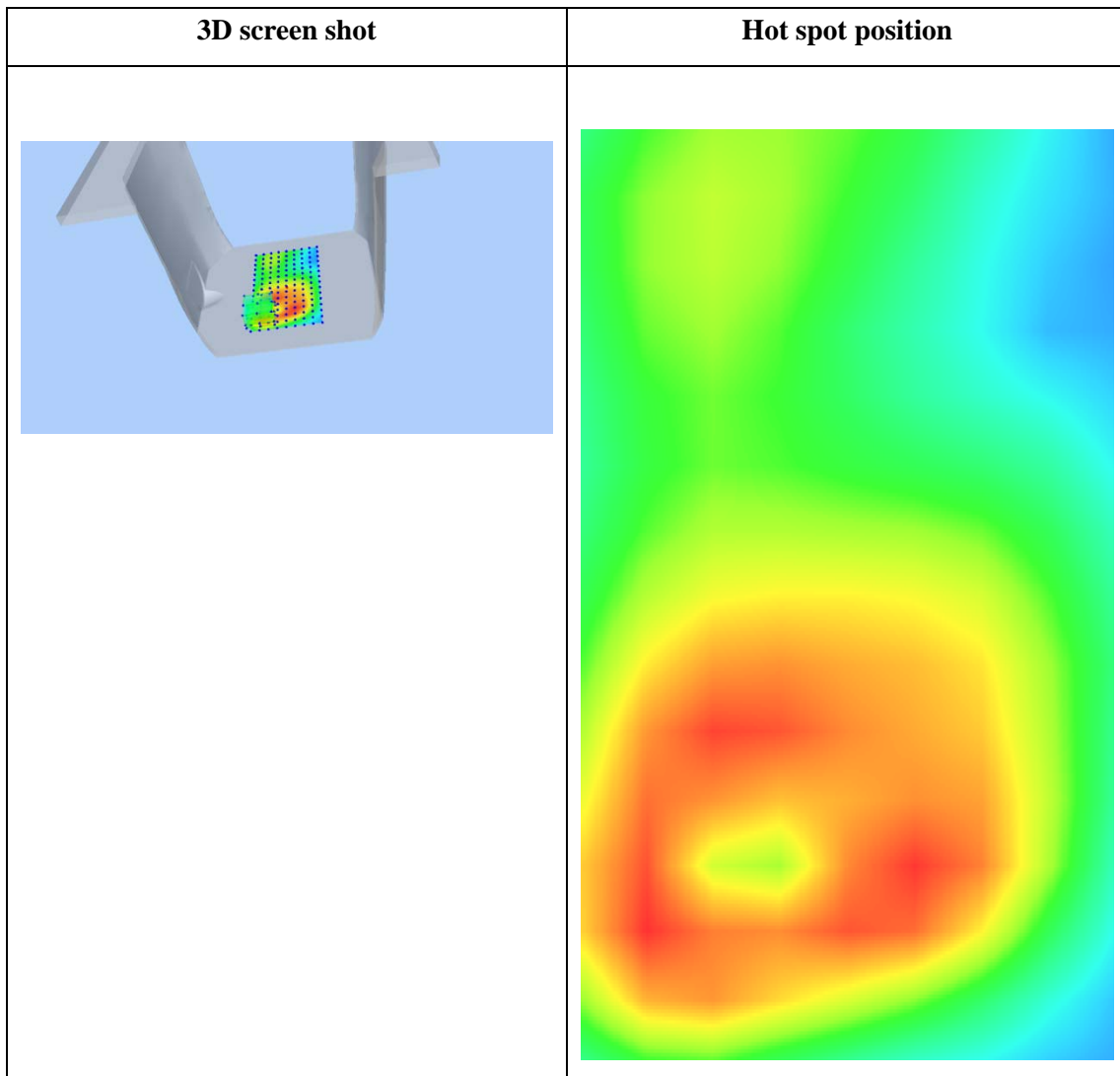
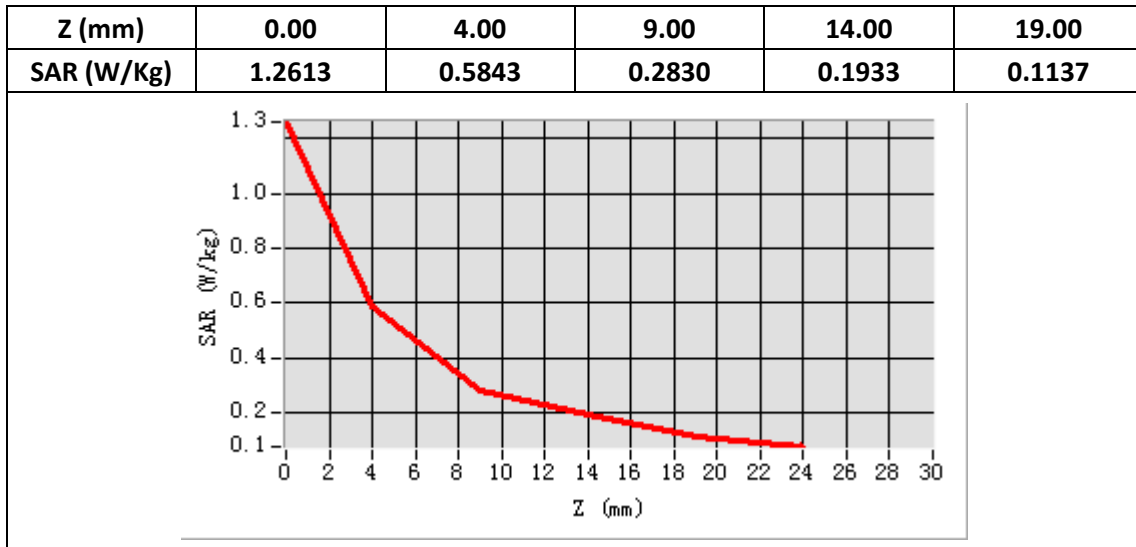
E-Field Probe	SATIMO SN_41/18 EPGO330
Frequency (MHz)	1732.5
Relative permittivity (real part)	53.37
Relative permittivity (imaginary)	15.00
Conductivity (S/m)	1.50
Variation (%)	-2.80
ConvF:	1.81



Maximum location: X=-29.00, Y=-50.00

SAR Peak: 0.95W/kg

SAR 10g (W/Kg)	0.322355
SAR 1g (W/Kg)	0.576861



Plot 13: LTE Band5, 10MHz,Right Cheek, Middle

Type: Phone measurement

Date of measurement: 02/20/2020

Measurement duration: 22 minutes 15 seconds

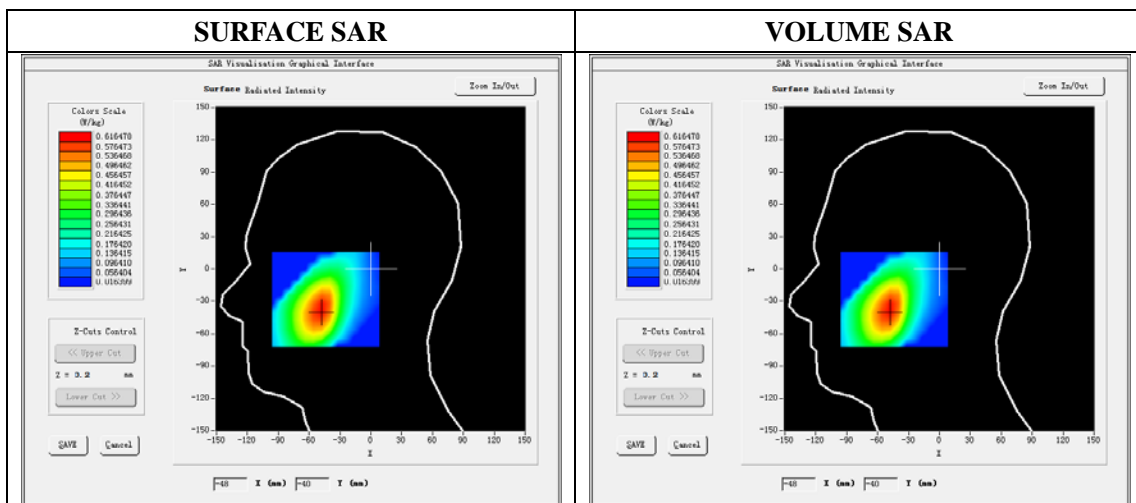
Mobile Phone IMEI number: --

A. Experimental conditions.

Area Scan	dx=8mm dy=8mm
ZoomScan	5x5x7,dx=8mm dy=8mm dz=5mm
Phantom	Validation plane
Device Position	Right Cheek
Band	LTE Band 5
Channels	20525
Signal	LTE (Duty cycle: 1:1)

B. SAR Measurement Results

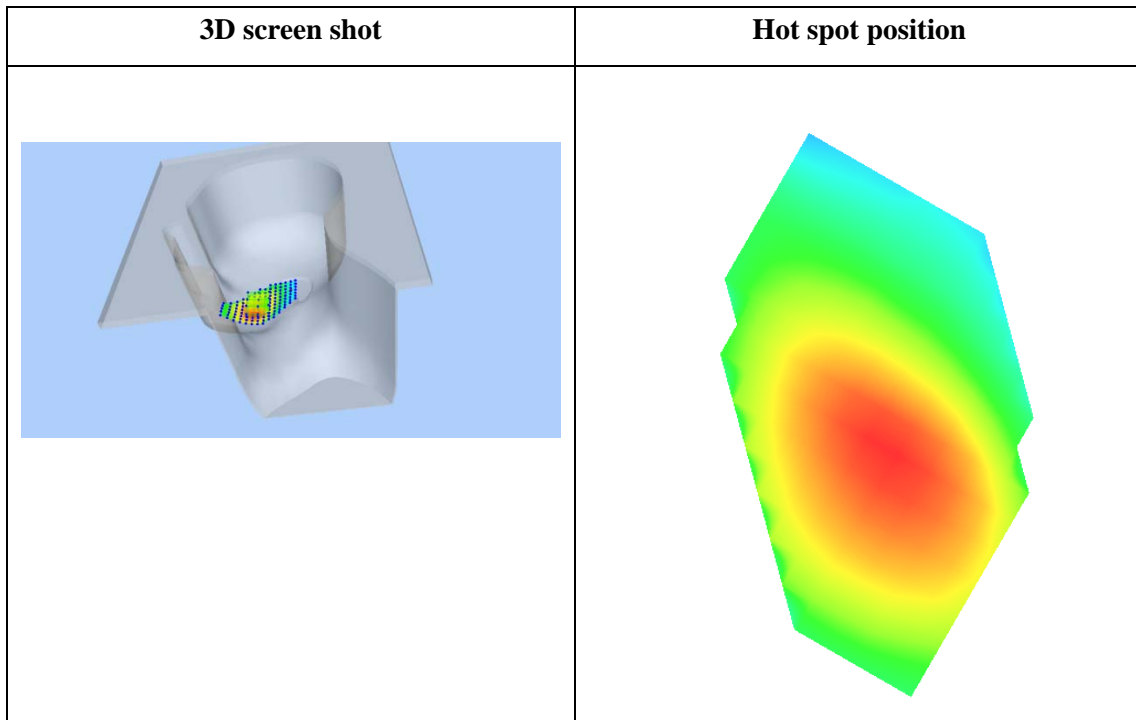
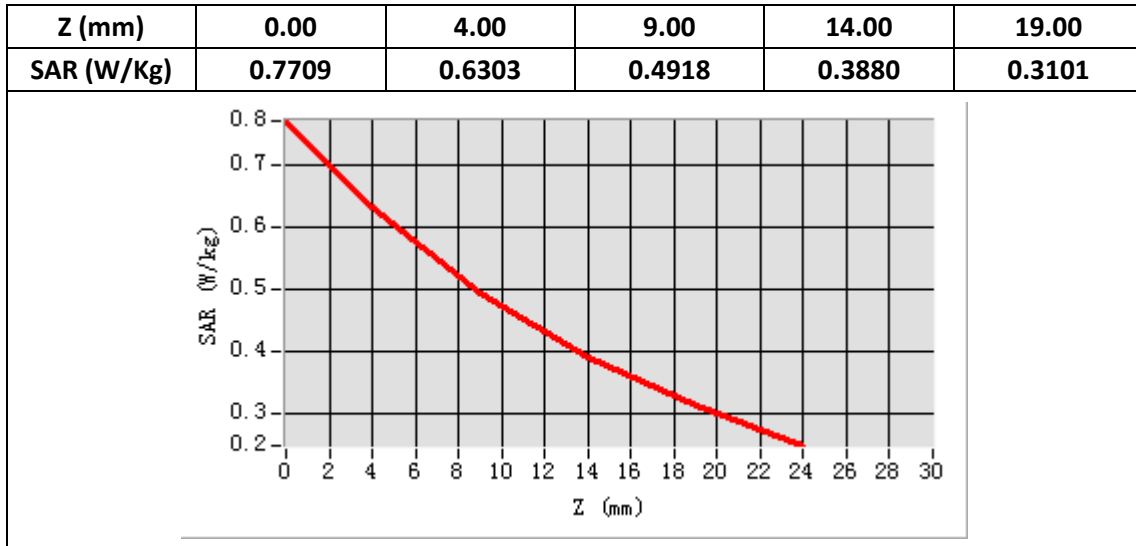
E-Field Probe	SATIMO SN_41/18 EPGO330
Frequency (MHz)	836.5
Relative permittivity (real part)	41.56
Relative permittivity (imaginary)	20.91
Conductivity (S/m)	0.97
Variation (%)	-2.82
ConvF:	1.60



Maximum location: X=-49.00, Y=-39.00

SAR Peak: 0.77 W/kg

SAR 10g (W/Kg)	0.444793
SAR 1g (W/Kg)	0.606655



Plot 14: LTE Band5, 10MHz, Back, Middle,10mm

Type: Phone measurement

Date of measurement: 02/20/2020

Measurement duration: 22 minutes 12 seconds

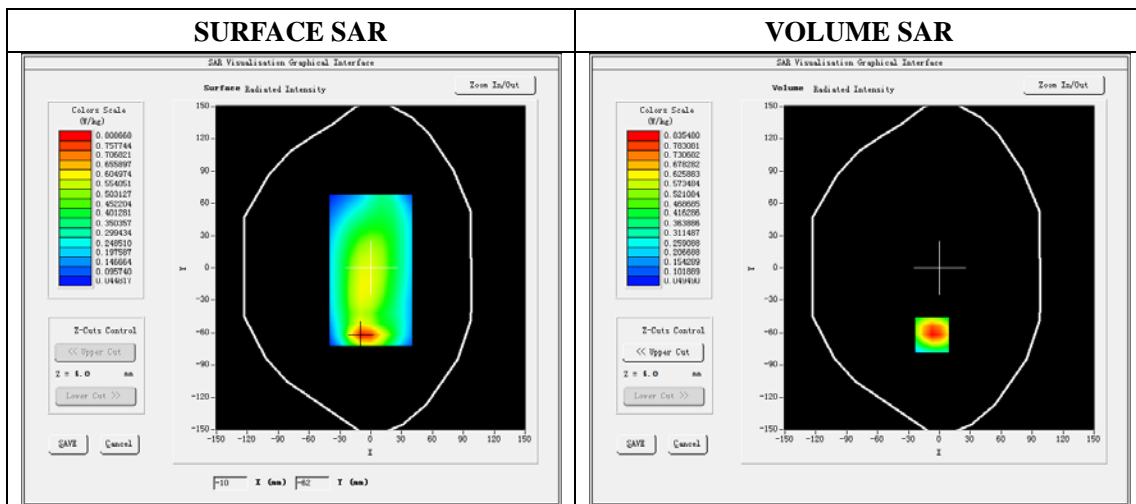
Mobile Phone IMEI number: --

A. Experimental conditions.

Area Scan	dx=8mm dy=8mm
ZoomScan	5x5x7,dx=8mm dy=8mm dz=5mm
Phantom	Validation plane
Device Position	Back
Band	LTE Band 5
Channels	20525
Signal	LTE (Duty cycle: 1:1)

B. SAR Measurement Results

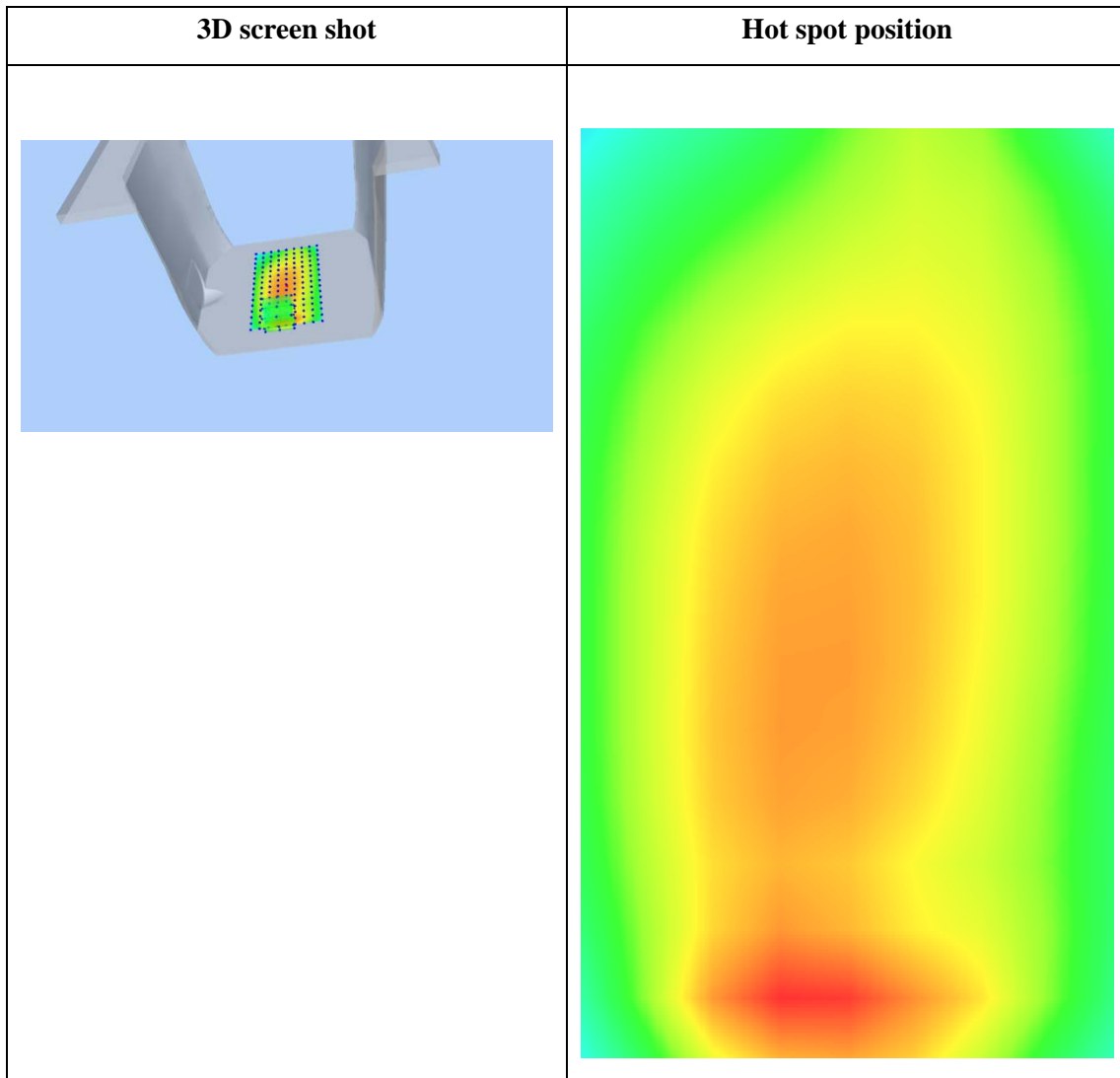
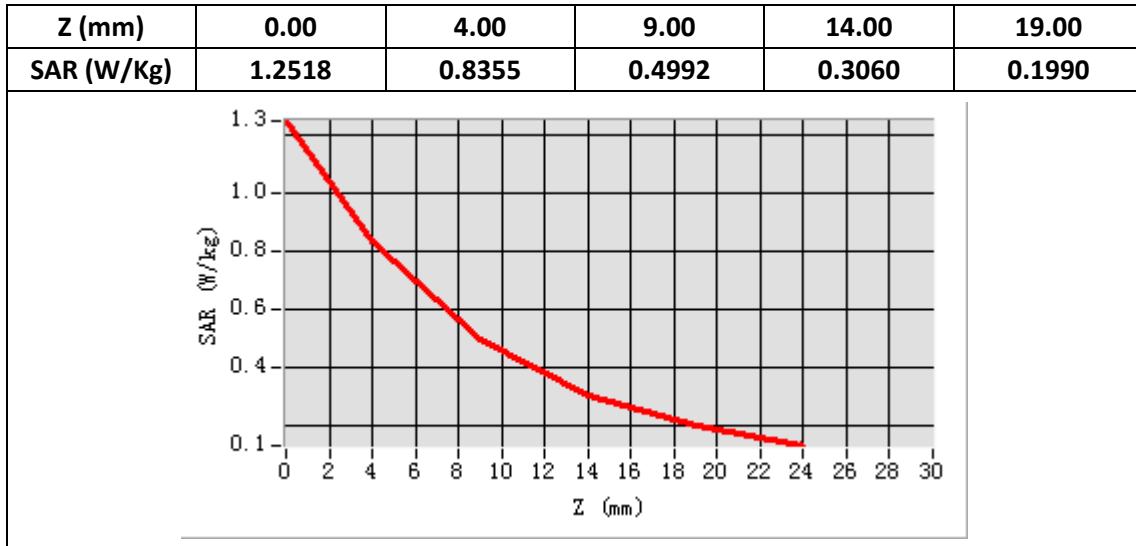
E-Field Probe	SATIMO SN_41/18 EPGO330
Frequency (MHz)	836.5
Relative permittivity (real part)	55.30
Relative permittivity (imaginary)	21.34
Conductivity (S/m)	0.99
Variation (%)	-1.24
ConvF:	1.64



Maximum location: X=-7.00, Y=-62.00

SAR Peak: 1.27W/kg

SAR 10g (W/Kg)	0.468539
SAR 1g (W/Kg)	0.806610



Plot 15: LTE Band12, 10MHz,Right Cheek, Middle

Type: Phone measurement

Date of measurement: 02/19/2020

Measurement duration: 22 minutes 13 seconds

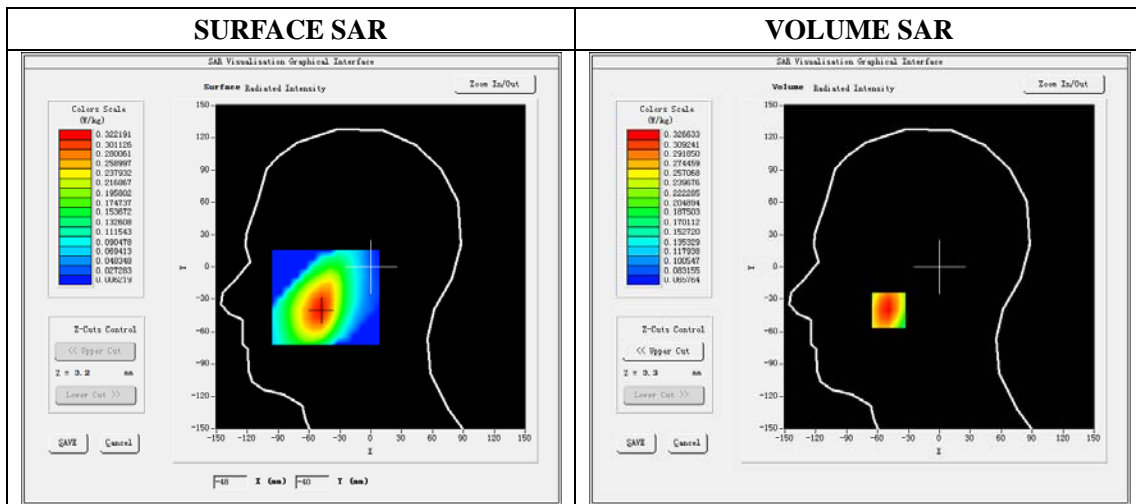
Mobile Phone IMEI number: --

A. Experimental conditions.

Area Scan	dx=8mm dy=8mm
ZoomScan	5x5x7,dx=8mm dy=8mm dz=5mm
Phantom	Validation plane
Device Position	Right Cheek
Band	LTE Band 12
Channels	23095
Signal	LTE (Duty cycle: 1:1)

B. SAR Measurement Results

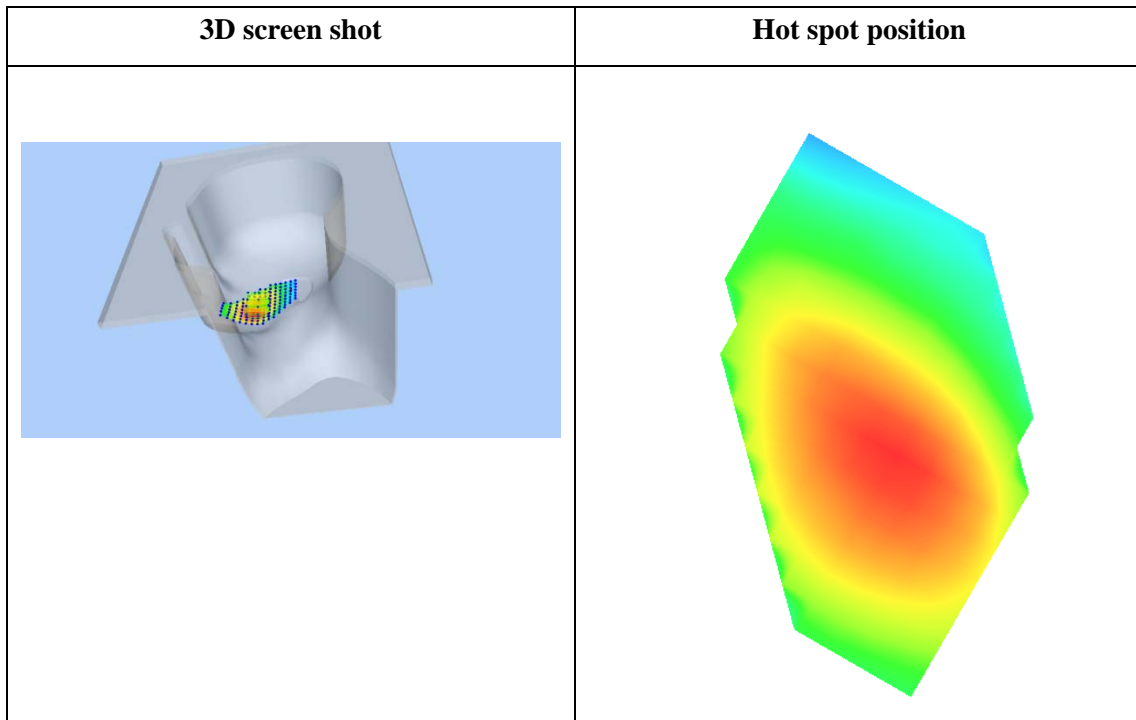
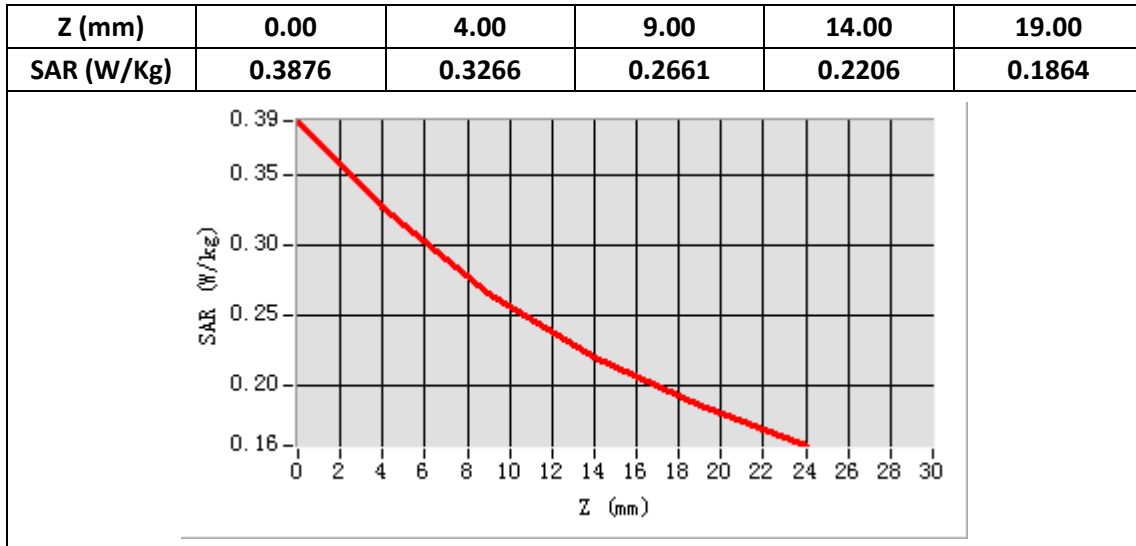
E-Field Probe	SATIMO SN_41/18 EPGO330
Frequency (MHz)	707.5
Relative permittivity (real part)	41.88
Relative permittivity (imaginary)	22.56
Conductivity (S/m)	0.94
Variation (%)	-1.00
ConvF:	1.54



Maximum location: X=-49.00, Y=-40.00

SAR Peak: 0.39 W/kg

SAR 10g (W/Kg)	0.249594
SAR 1g (W/Kg)	0.323462



Plot 16: LTE Band12, 10MHz, Back, Middle,10mm

Type: Phone measurement

Date of measurement: 02/19/2020

Measurement duration: 22 minutes 33 seconds

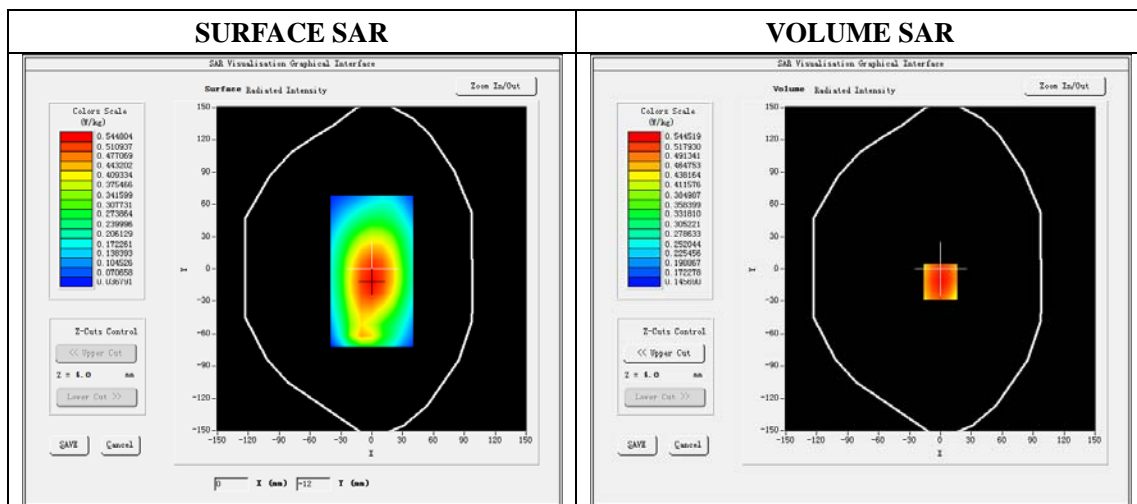
Mobile Phone IMEI number: --

A. Experimental conditions.

Area Scan	dx=8mm dy=8mm
ZoomScan	5x5x7,dx=8mm dy=8mm dz=5mm
Phantom	Validation plane
Device Position	Back
Band	LTE Band 12
Channels	23095
Signal	LTE (Duty cycle: 1:1)

B. SAR Measurement Results

E-Field Probe	SATIMO SN_41/18 EPGO330
Frequency (MHz)	707.5
Relative permittivity (real part)	55.61
Relative permittivity (imaginary)	23.04
Conductivity (S/m)	0.96
Variation (%)	-0.29
ConvF:	1.59

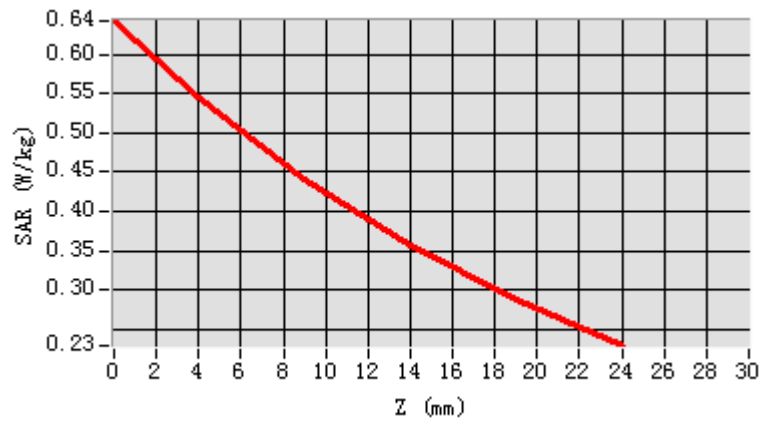


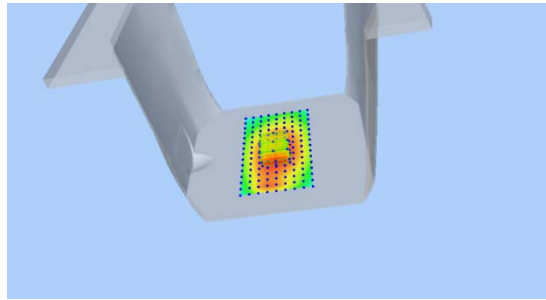

Maximum location: X=0.00, Y=-12.00

SAR Peak: 0.64W/kg

SAR 10g (W/Kg)	0.414566
SAR 1g (W/Kg)	0.538599

Z (mm)	0.00	4.00	9.00	14.00	19.00
SAR (W/Kg)	0.6428	0.5445	0.4411	0.3567	0.2876



3D screen shot	Hot spot position
	

Plot 17: LTE Band13, 10MHz,Right Cheek, Middle

Type: Phone measurement

Date of measurement: 02/19/2020

Measurement duration: 22 minutes 22 seconds

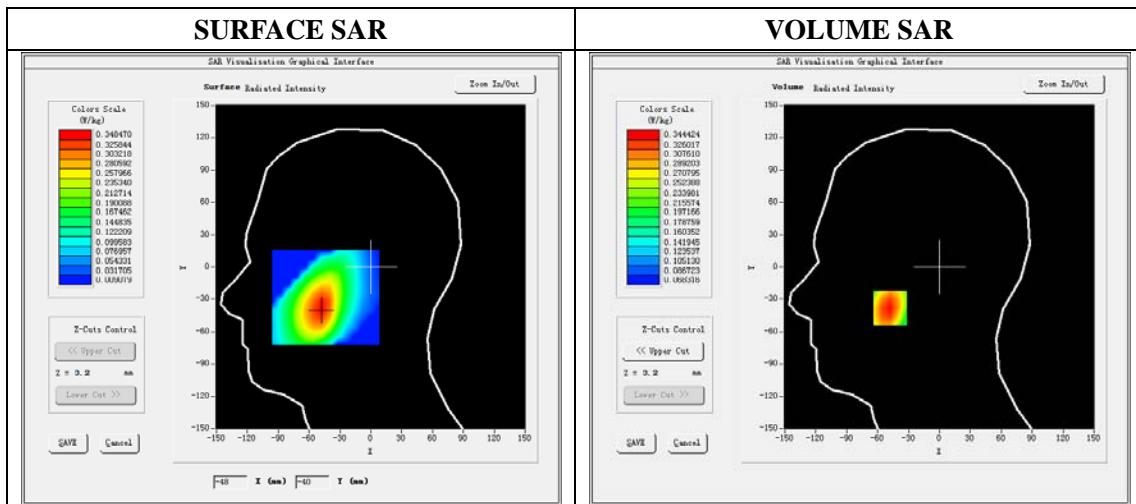
Mobile Phone IMEI number: --

A. Experimental conditions.

Area Scan	dx=8mm dy=8mm
ZoomScan	5x5x7,dx=8mm dy=8mm dz=5mm
Phantom	Validation plane
Device Position	Right Cheek
Band	LTE Band 13
Channels	23230
Signal	LTE (Duty cycle: 1:1)

B. SAR Measurement Results

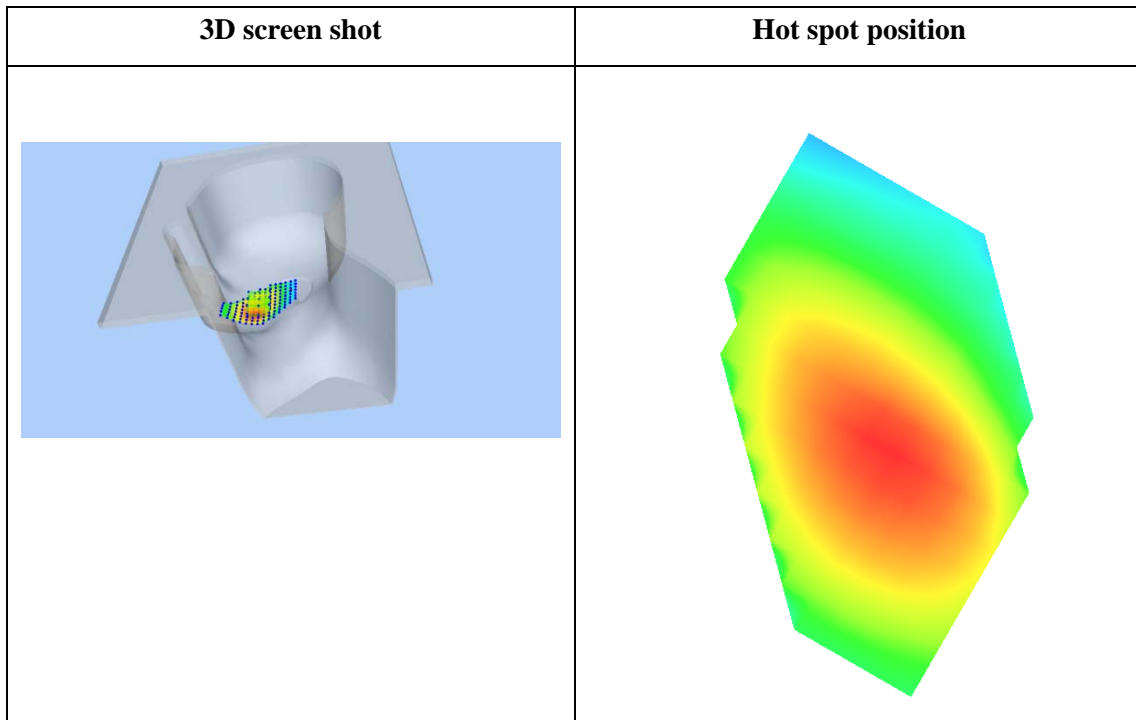
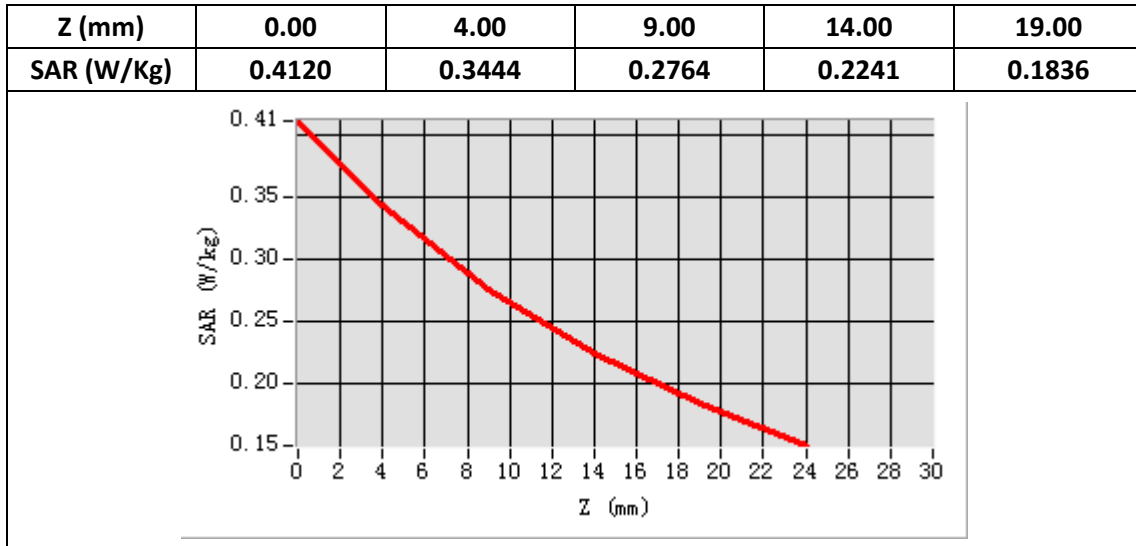
E-Field Probe	SATIMO SN_41/18 EPGO330
Frequency (MHz)	782
Relative permittivity (real part)	41.88
Relative permittivity (imaginary)	22.56
Conductivity (S/m)	0.94
Variation (%)	-0.61
ConvF:	1.54



Maximum location: X=-48.00, Y=-38.00

SAR Peak: 0.41 W/kg

SAR 10g (W/Kg)	0.256349
SAR 1g (W/Kg)	0.342512



Plot 18: LTE Band13, 10MHz, Back, Middle,10mm

Type: Phone measurement

Date of measurement: 02/19/2020

Measurement duration: 22 minutes 33 seconds

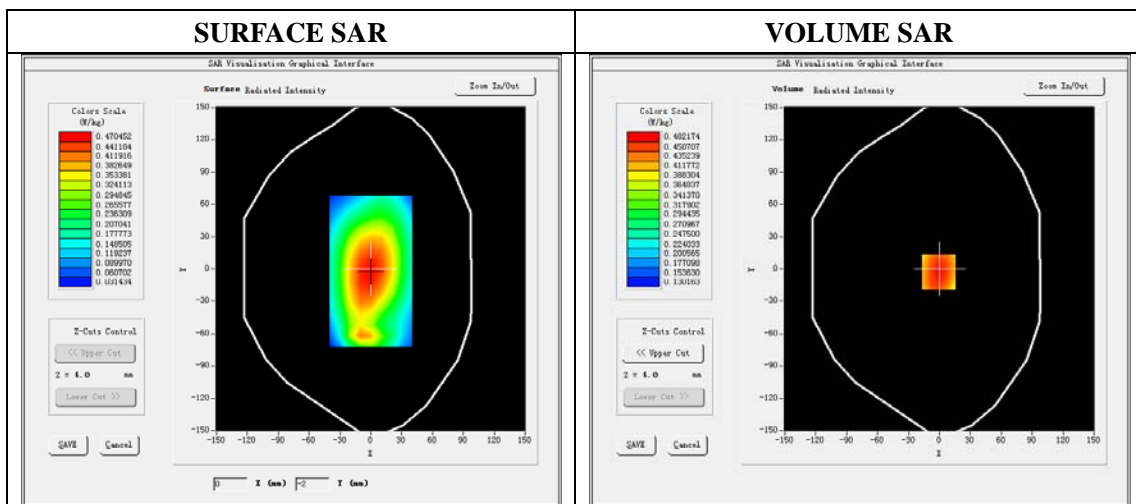
Mobile Phone IMEI number: --

A. Experimental conditions.

Area Scan	dx=8mm dy=8mm
ZoomScan	5x5x7,dx=8mm dy=8mm dz=5mm
Phantom	Validation plane
Device Position	Back
Band	LTE Band 13
Channels	23230
Signal	LTE (Duty cycle: 1:1)

B. SAR Measurement Results

E-Field Probe	SATIMO SN_41/18 EPGO330
Frequency (MHz)	782
Relative permittivity (real part)	55.61
Relative permittivity (imaginary)	23.04
Conductivity (S/m)	0.96
Variation (%)	-1.37
ConvF:	1.59

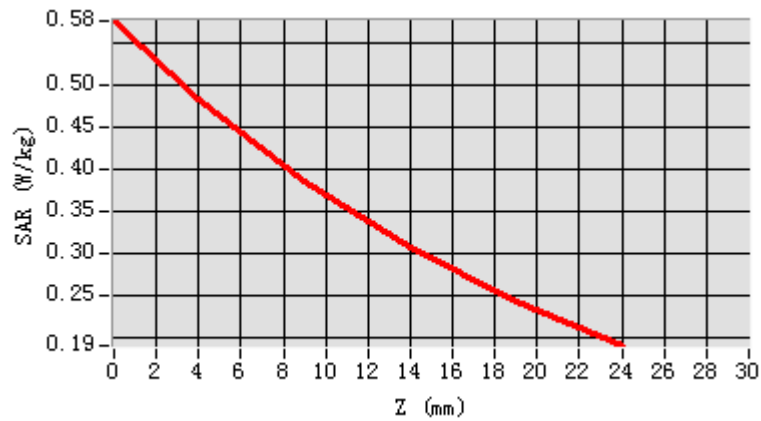


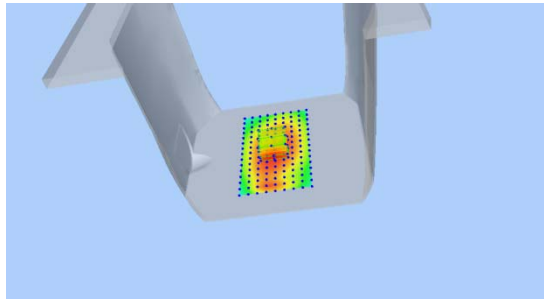
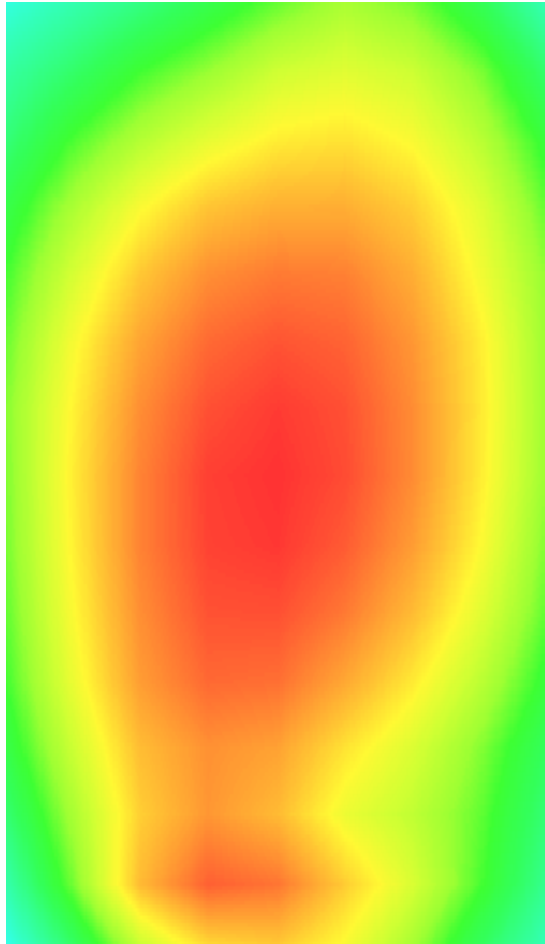
Maximum location: X=-1.00, Y=-3.00

SAR Peak: 0.58W/kg

SAR 10g (W/Kg)	0.363872
SAR 1g (W/Kg)	0.479415

Z (mm)	0.00	4.00	9.00	14.00	19.00
SAR (W/Kg)	0.5759	0.4822	0.3848	0.3067	0.2438



3D screen shot	Hot spot position
	

Plot 19: LTE Band17, 10MHz,Right Check, Middle

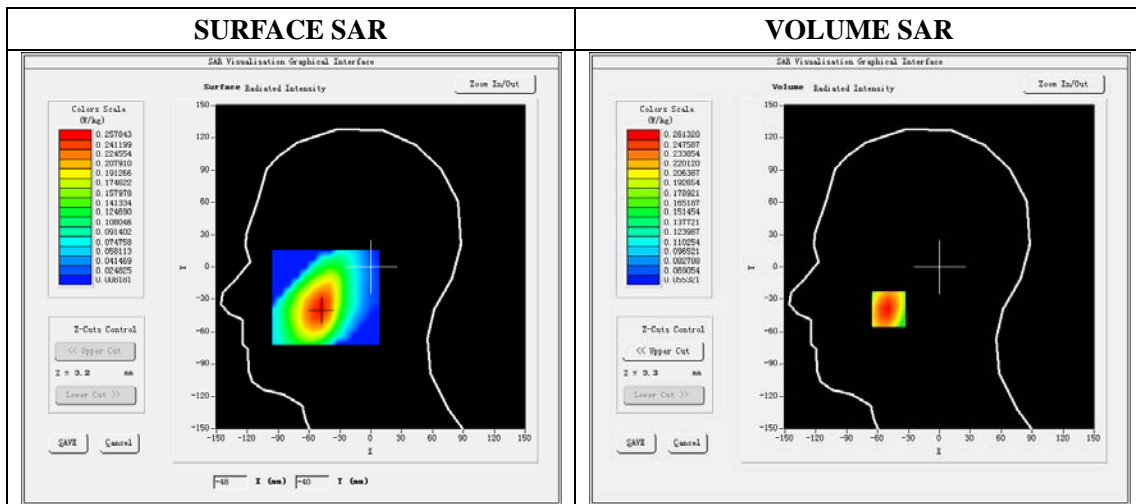
Type: Phone measurement
 Date of measurement: 02/19/2020
 Measurement duration: 22 minutes 15 seconds
 Mobile Phone IMEI number: --

A. Experimental conditions.

Area Scan	dx=8mm dy=8mm
ZoomScan	5x5x7,dx=8mm dy=8mm dz=5mm
Phantom	Validation plane
Device Position	Right Check
Band	LTE Band 17
Channels	23790
Signal	LTE (Duty cycle: 1:1)

B. SAR Measurement Results

E-Field Probe	SATIMO SN_41/18 EPGO330
Frequency (MHz)	710
Relative permittivity (real part)	41.88
Relative permittivity (imaginary)	22.56
Conductivity (S/m)	0.94
Variation (%)	-4.97
ConvF:	1.54

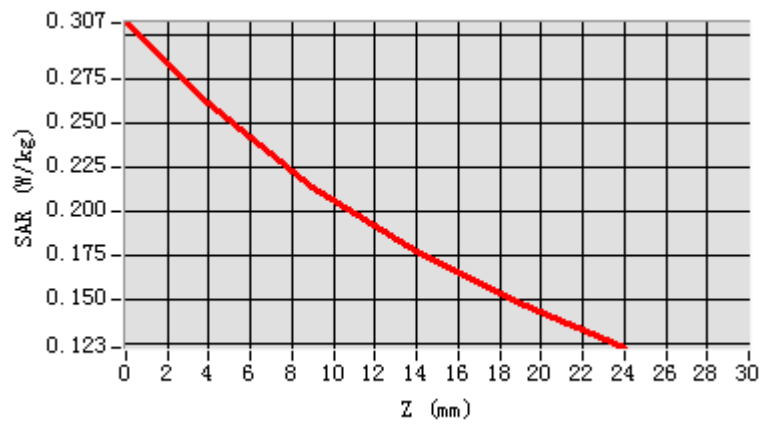


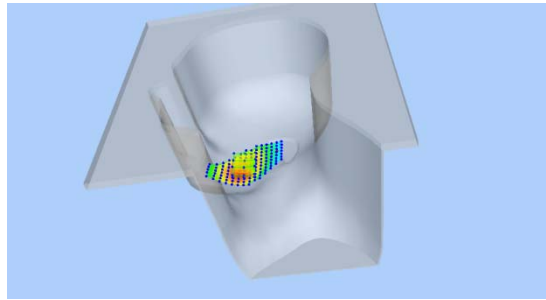
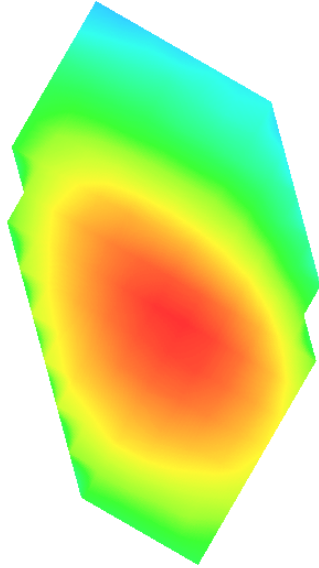
Maximum location: X=-49.00, Y=-39.00

SAR Peak: 0.31 W/kg

SAR 10g (W/Kg)	0.195678
SAR 1g (W/Kg)	0.252973

Z (mm)	0.00	4.00	9.00	14.00	19.00
SAR (W/Kg)	0.3071	0.2613	0.2143	0.1772	0.1477



3D screen shot	Hot spot position
	

Plot 20: LTE Band 17, 10MHz, Back, Middle,10mm

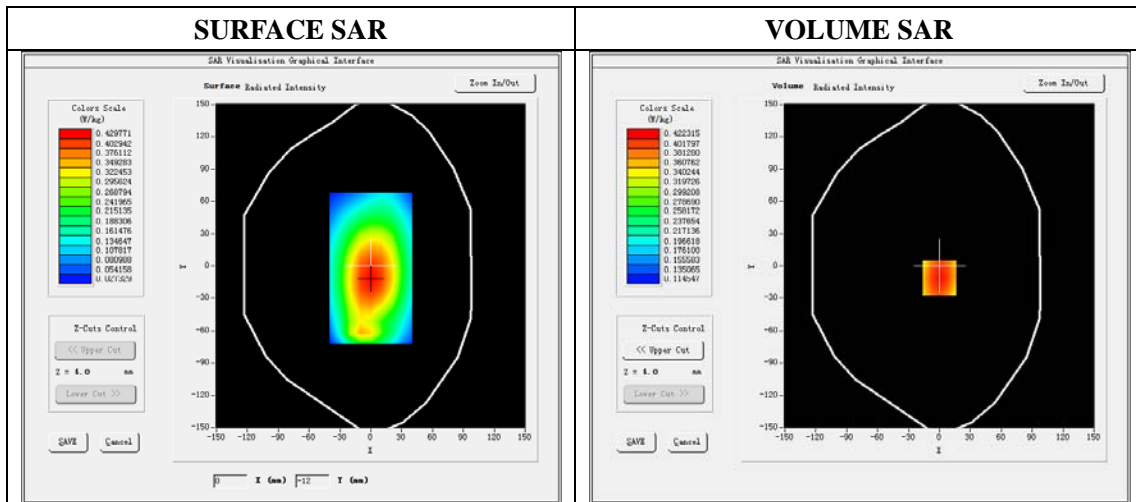
Type: Phone measurement
 Date of measurement: 02/19/2020
 Measurement duration: 22 minutes 22 seconds
 Mobile Phone IMEI number: --

A. Experimental conditions.

Area Scan	dx=8mm dy=8mm
ZoomScan	5x5x7,dx=8mm dy=8mm dz=5mm
Phantom	Validation plane
Device Position	Back
Band	LTE Band 17
Channels	23790
Signal	LTE (Duty cycle: 1:1)

B. SAR Measurement Results

E-Field Probe	SATIMO SN_41/18 EPGO330
Frequency (MHz)	710
Relative permittivity (real part)	55.61
Relative permittivity (imaginary)	23.04
Conductivity (S/m)	0.96
Variation (%)	-1.71
ConvF:	1.59

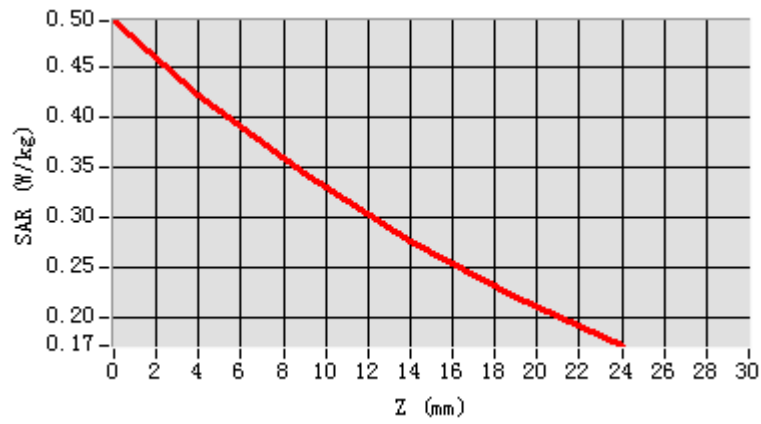


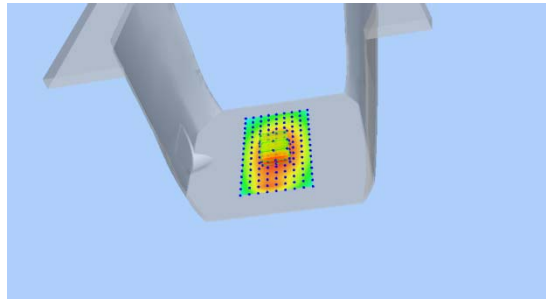

Maximum location: X=0.00, Y=11.00

SAR Peak: 0.50W/kg

SAR 10g (W/Kg)	0.314376
SAR 1g (W/Kg)	0.408731

Z (mm)	0.00	4.00	9.00	14.00	19.00
SAR (W/Kg)	0.4961	0.4223	0.3427	0.2758	0.2195



3D screen shot	Hot spot position
	

Plot 21: Wi-Fi 802.11b Left Cheek, Middle

Type: Phone measurement

Date of measurement: 02/24/2020

Measurement duration: 22 minutes 24 seconds

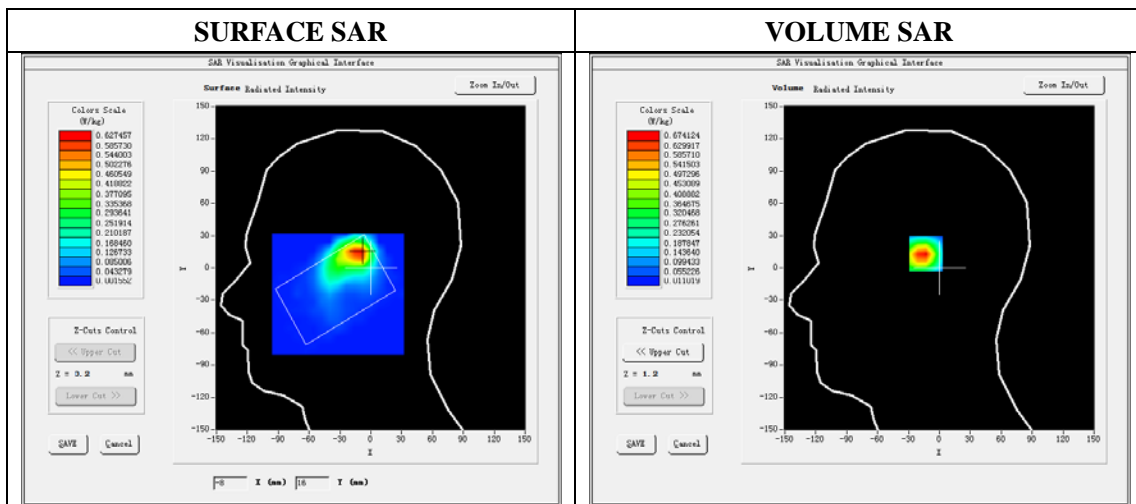
Mobile Phone IMEI number: --

A. Experimental conditions.

Area Scan	dx=5mm,dy=5mm
ZoomScan	7x7x8,dx=5mm dy=5mm dz=4mm
Phantom	Validation plane
Device Position	Left Cheek
Band	WIFI
Channels	6
Signal	DSSS (Duty cycle: 1:1)

B. SAR Measurement Results

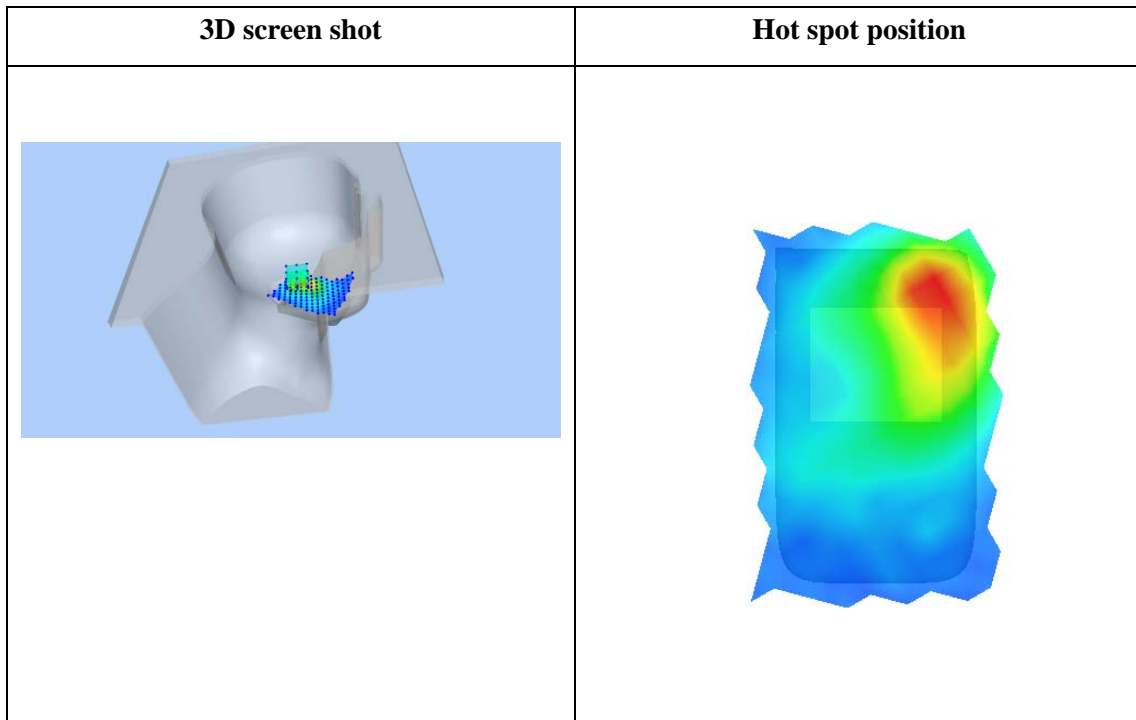
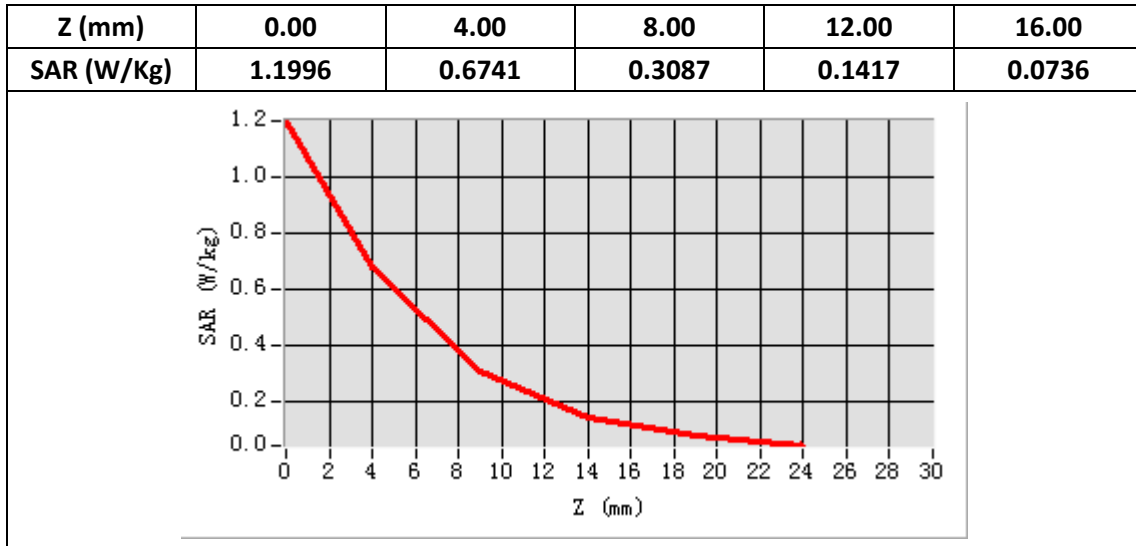
E-Field Probe	SATIMO SN_41/18 EPGO330
Frequency (MHz)	2437
Relative permittivity (real part)	39.30
Relative permittivity (imaginary)	13.37
Conductivity (S/m)	1.82
Variation (%)	-1.75
ConvF:	2.05



Maximum location: X=-11.00 Y=14.00

SAR Peak:1.25 W/kg

SAR 10g (W/Kg)	0.300640
SAR 1g (W/Kg)	0.655110



Plot 22: Wi-Fi 802.11b, Back ,Middle, 10mm

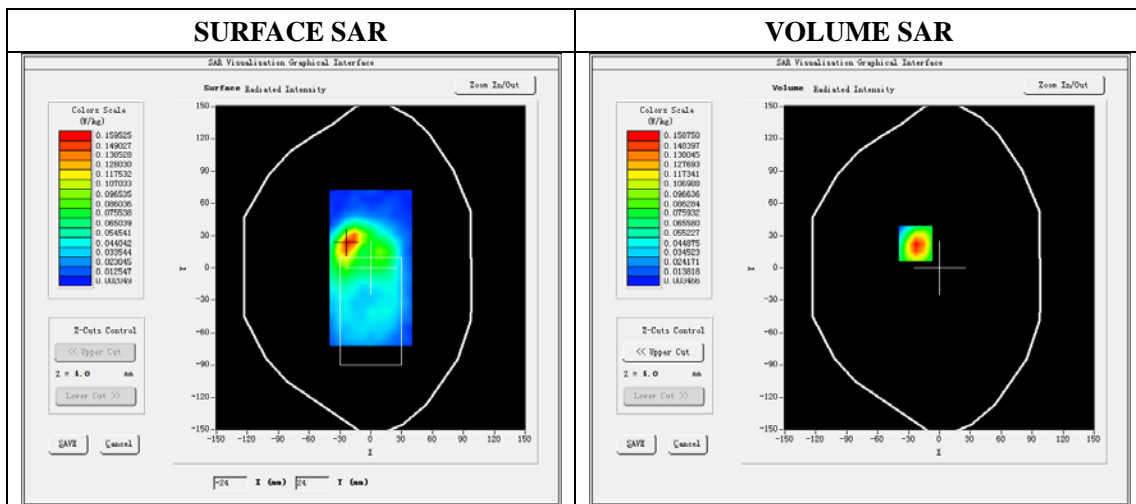
Type: Phone measurement
 Date of measurement: 02/24/2020
 Measurement duration: 22 minutes 26 seconds
 Mobile Phone IMEI number: --

A. Experimental conditions.

Area Scan	dx=5mm,dy=5mm
ZoomScan	7x7x8,dx=5mm dy=5mm dz=4mm
Phantom	Validation plane
Device Position	Back
Band	WIFI
Channels	6
Signal	DSSS (Duty cycle: 1:1)

B. SAR Measurement Results

E-Field Probe	SATIMO SN_41/18 EPGO330
Frequency (MHz)	2437
Relative permittivity (real part)	52.74
Relative permittivity (imaginary)	14.47
Conductivity (S/m)	1.97
Variation (%)	0.76
ConvF:	2.12



Maximum location: X=-23.00 Y=23.00

SAR Peak: 0.27 W/kg

SAR 10g (W/Kg)	0.074043
SAR 1g (W/Kg)	0.151099

