

Appendix B: SAR Measurement results Plots

Plot	Frequency/Mode	Testing Position and Channel	Test Date
1	GSM850	Right Cheek Middle	2019/12/16
2	GSM850/GPRS2Tx	Body Back, Middle ,10mm	2019/12/16
3	GSM1900	Left Cheek Middle	2019/12/18
4	GSM1900/GPRS3Tx	Body Back, Middle ,10mm	2019/12/18
5	WCDMA1900	Left Cheek Middle	2019/12/18
6	WCDMA1900	Body Back, Middle ,10mm	2019/12/18
7	WCDMA1700	Left Cheek High	2019/12/17
8	WCDMA1700	Body Back, High ,10mm	2019/12/17
9	WCDMA850	Right Cheek High	2019/12/16
10	WCDMA850	Body Back, High ,10mm	2019/12/16
11	LTE Band2	Left Cheek Middle	2019/12/18
12	LTE Band2	Body Back, Middle ,10mm	2019/12/18
13	LTE Band4	Left Cheek Middle	2019/12/17
14	LTE Band4	Body Back, Middle ,10mm	2019/12/17
15	LTE Band5	Right Cheek Middle	2019/12/16
16	LTE Band5	Body Back, Middle ,10mm	2019/12/16
17	LTE Band7	Left Cheek Middle	2019/12/20
18	LTE Band7	Body Back, Middle ,10mm	2019/12/20
19	LTE Band66	Right Cheek Middle	2019/12/17
20	LTE Band66	Body Back, Middle ,10mm	2019/12/17
21	WIFI 2.4G 802.11b	Left Cheek Middle	2019/12/19
22	WIFI 2.4G 802.11b	Body Back, Middle ,10mm	2019/12/19

Plot 1: GSM850, Right Cheek, Middle

Type: Phone measurement

Date of measurement: 12/16/2019

Measurement duration: 22 minutes 02 seconds

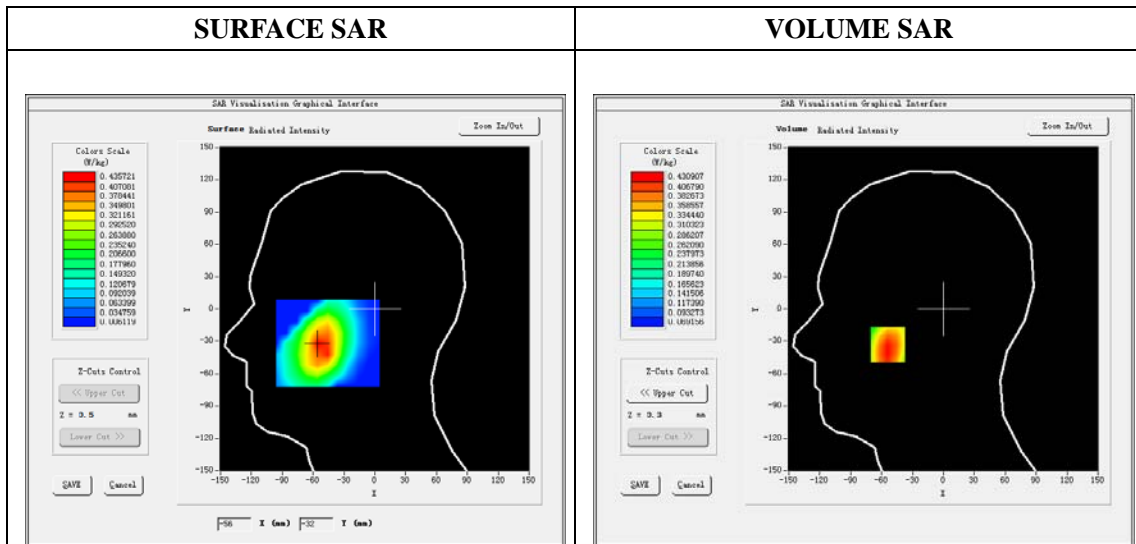
Mobile Phone IMEI number: --

A. Experimental conditions.

Area Scan	dx=8mm dy=8mm
ZoomScan	5x5x7,dx=8mm dy=8mm dz=5mm
Phantom	Validation plane
Device Position	Right Cheek
Band	GSM850
Channels	190
Signal	GSM (Duty cycle: 1:8.3)

B. SAR Measurement Results

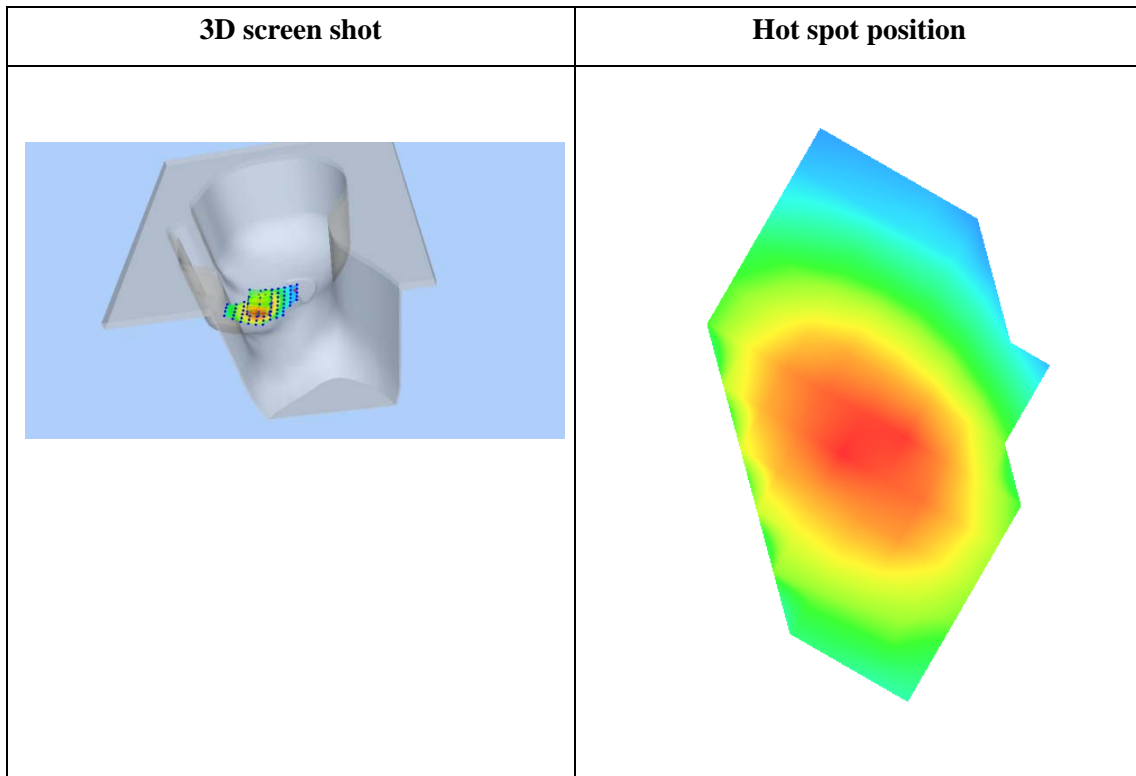
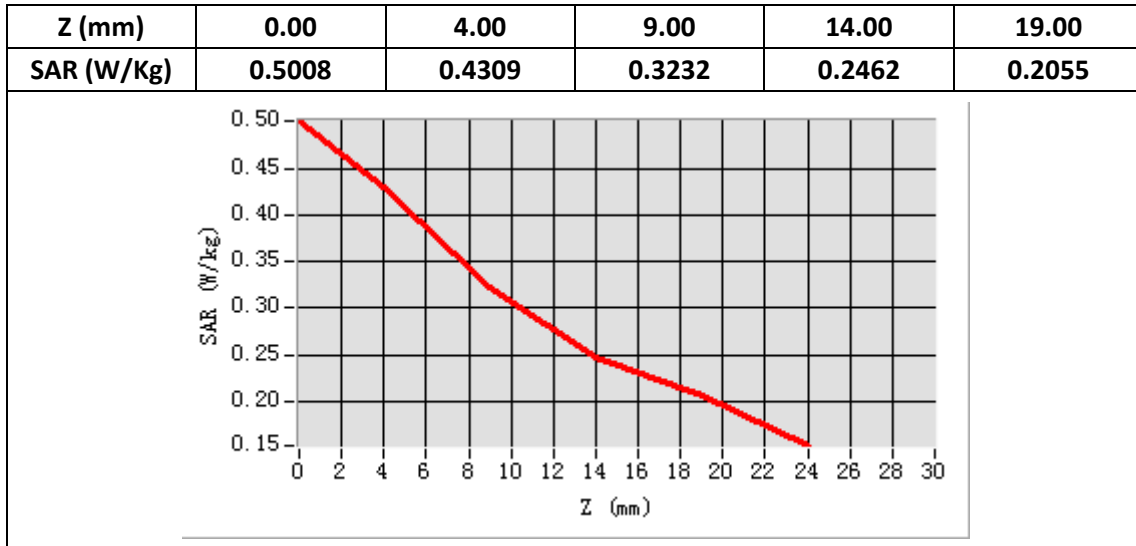
E-Field Probe	SATIMO SN_27/15_EPG0261
Frequency (MHz)	836.6
Relative permittivity (real part)	41.59
Relative permittivity (imaginary part)	19.83
Conductivity (S/m)	0.92
Variation (%)	-2.92
ConvF:	1.92



Maximum location: X=-54.00, Y=-33.00

SAR Peak: 0.57W/kg

SAR 10g (W/Kg)	0.306267
SAR 1g (W/Kg)	0.420120



Plot 2: GPRS850, Back, Middle,10mm

Type: Phone measurement

Date of measurement: 12/16/2019

Measurement duration: 22 minutes 04 seconds

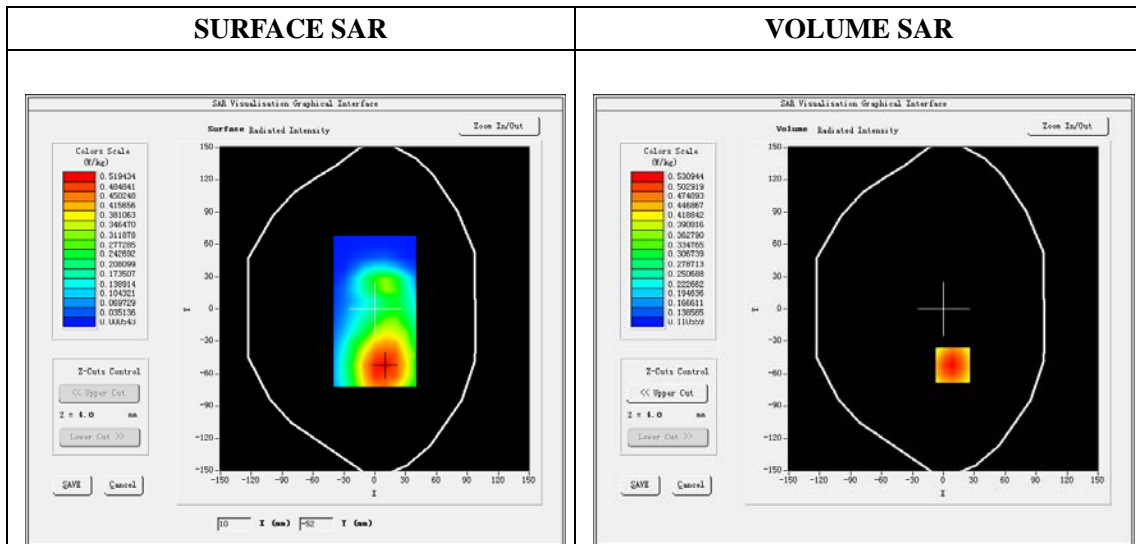
Mobile Phone IMEI number: --

A. Experimental conditions.

Area Scan	dx=8mm dy=8mm
ZoomScan	5x5x7,dx=8mm dy=8mm dz=5mm
Phantom	Validation plane
Device Position	Back
Band	GSPRS850_2Tx
Channels	190
Signal	GPRS(Duty cycle: 1:6.03)

B. SAR Measurement Results

E-Field Probe	SATIMO SN_27/15_EPG0261
Frequency (MHz)	836.6
Relative permittivity (real part)	55.29
Relative permittivity (imaginary part)	21.13
Conductivity (S/m)	0.98
Variation (%)	3.20
ConvF:	1.99

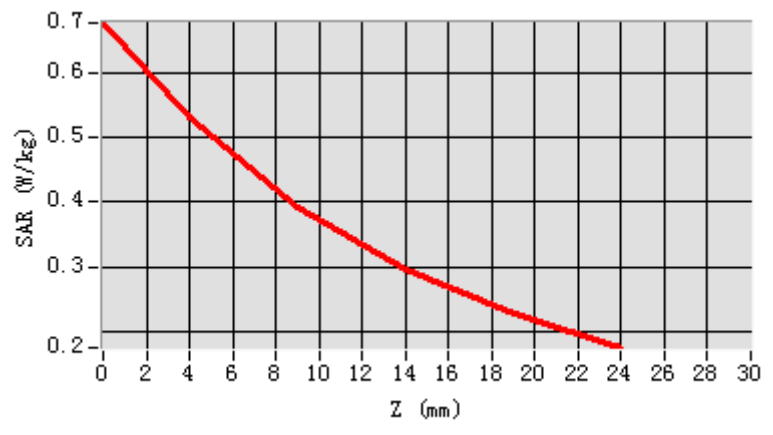


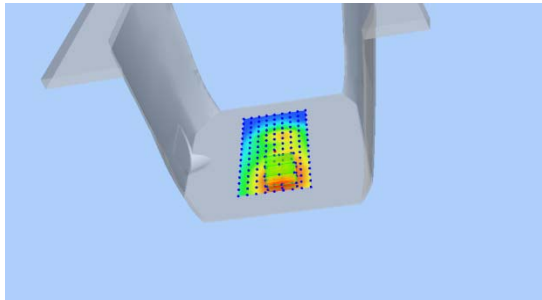
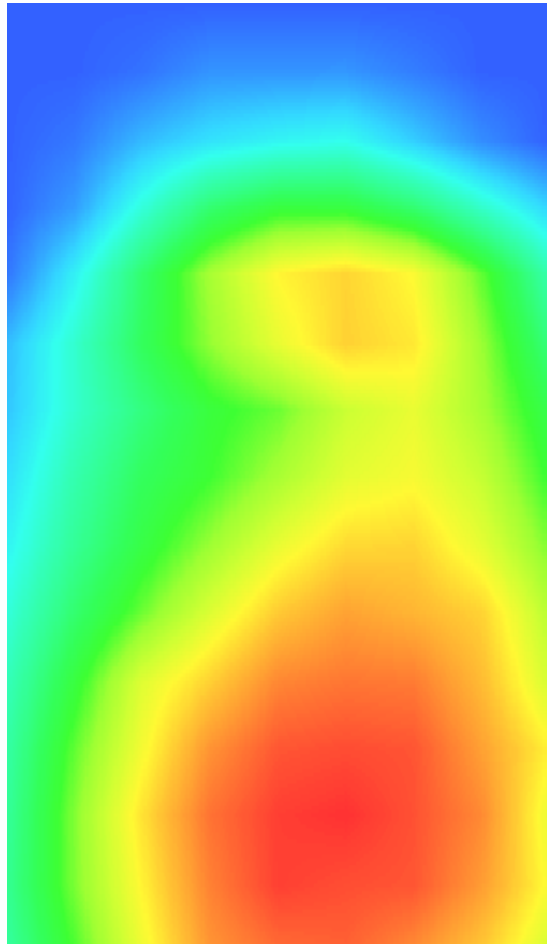
Maximum location: X=9.00, Y=-52.00

SAR Peak: 0.68 W/kg

SAR 10g (W/Kg)	0.373559
SAR 1g (W/Kg)	0.520320

Z (mm)	0.00	4.00	9.00	14.00	19.00
SAR (W/Kg)	0.6778	0.5309	0.3930	0.2958	0.2274



3D screen shot	Hot spot position
	

Plot 3: GSM1900, Left Cheek, Middle

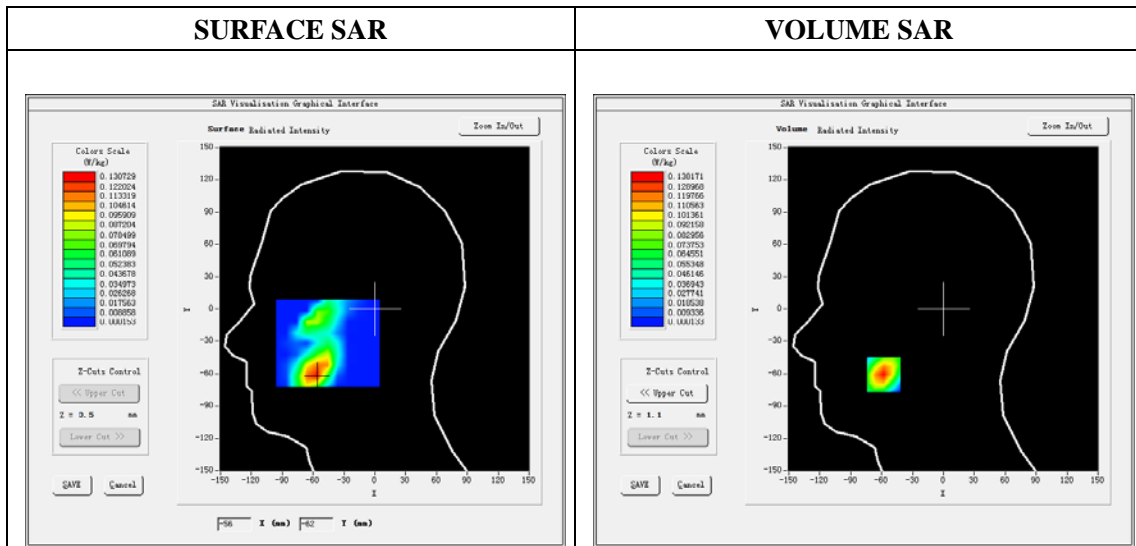
Type: Phone measurement
 Date of measurement: 12/18/2019
 Measurement duration: 22 minutes 01 seconds
 Mobile Phone IMEI number: --

A. Experimental conditions.

Area Scan	dx=8mm dy=8mm
Zoom Scan	5x5x7,dx=8mm dy=8mm dz=5mm
Phantom	Validation plane
Device Position	Left Cheek
Band	GSM1900
Channels	661
Signal	GSM (Duty cycle: 1:8.3)

B. SAR Measurement Results

E-Field Probe	SATIMO SN_27/15_EPG0261
Frequency (MHz)	1880
Relative permittivity (real part)	40.52
Relative permittivity (imaginary part)	13.26
Conductivity (S/m)	1.40
Variation (%)	1.00
ConvF:	2.34

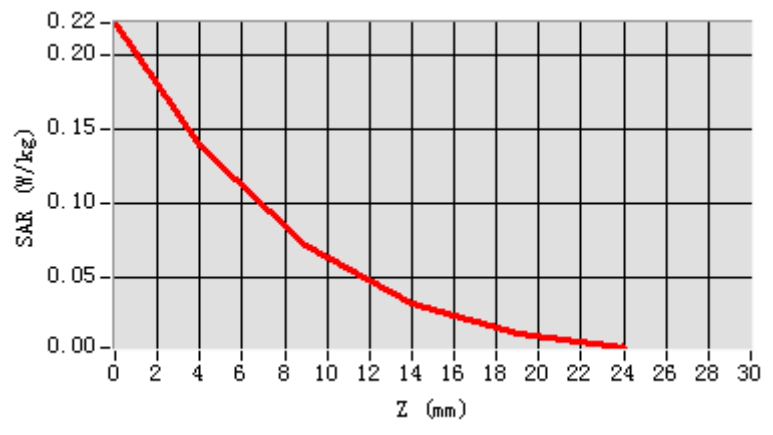


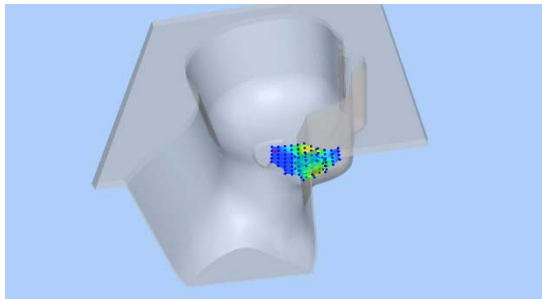
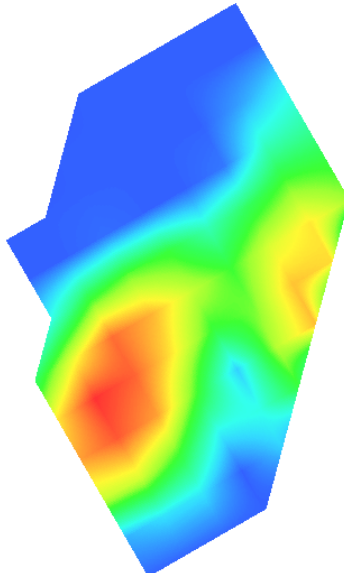
Maximum location: X=-58.00, Y=-61.00

SAR Peak: 0.22 W/kg

SAR 10g (W/Kg)	0.060014
SAR 1g (W/Kg)	0.127419

Z (mm)	0.00	4.00	9.00	14.00	19.00
SAR (W/Kg)	0.2213	0.1382	0.0707	0.0320	0.0115



3D screen shot	Hot spot position
	

Plot 4: GPRS1900, Back, Middle ,10mm

Type: Phone measurement

Date of measurement: 12/18/2019

Measurement duration: 22 minutes 05 seconds

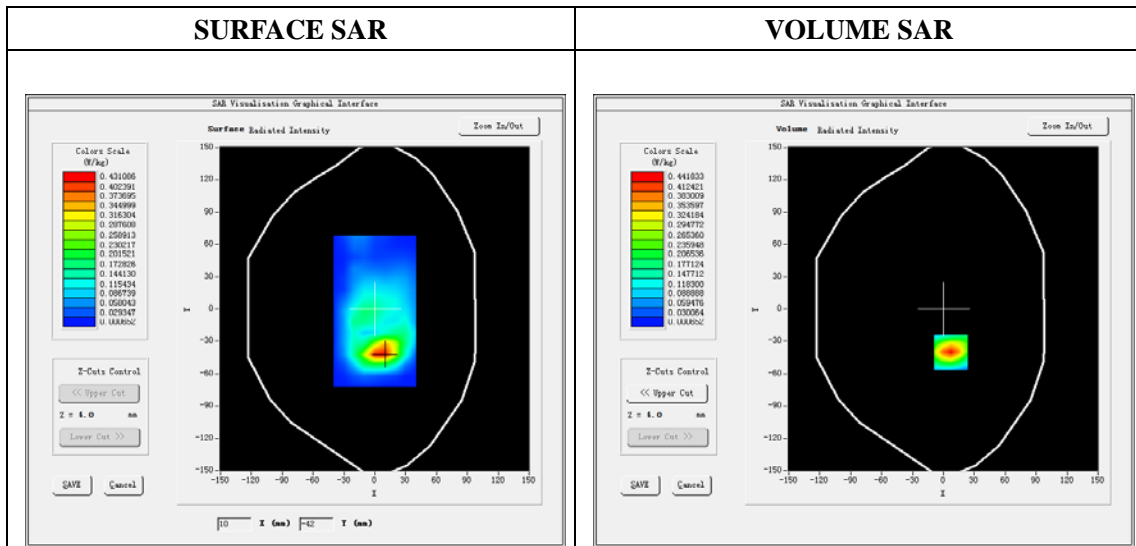
Mobile Phone IMEI number: --

A. Experimental conditions.

Area Scan	dx=8mm dy=8mm
Zoom Scan	5x5x7,dx=8mm dy=8mm dz=5mm
Phantom	Validation plane
Device Position	Back
Band	GPRS1900_3Tx
Channels	661
Signal	GPRS(Duty cycle: 1:4.26)

B. SAR Measurement Results

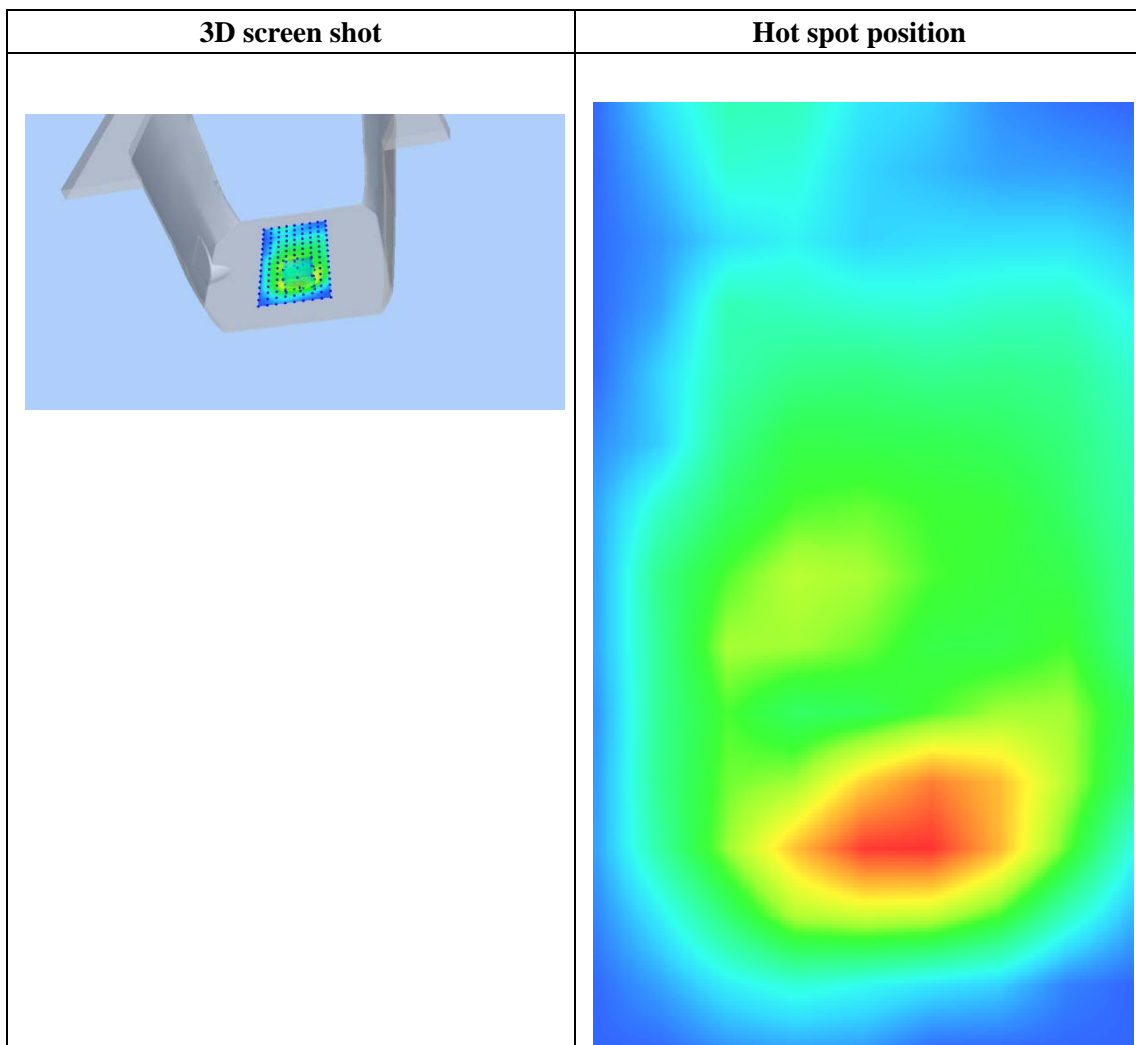
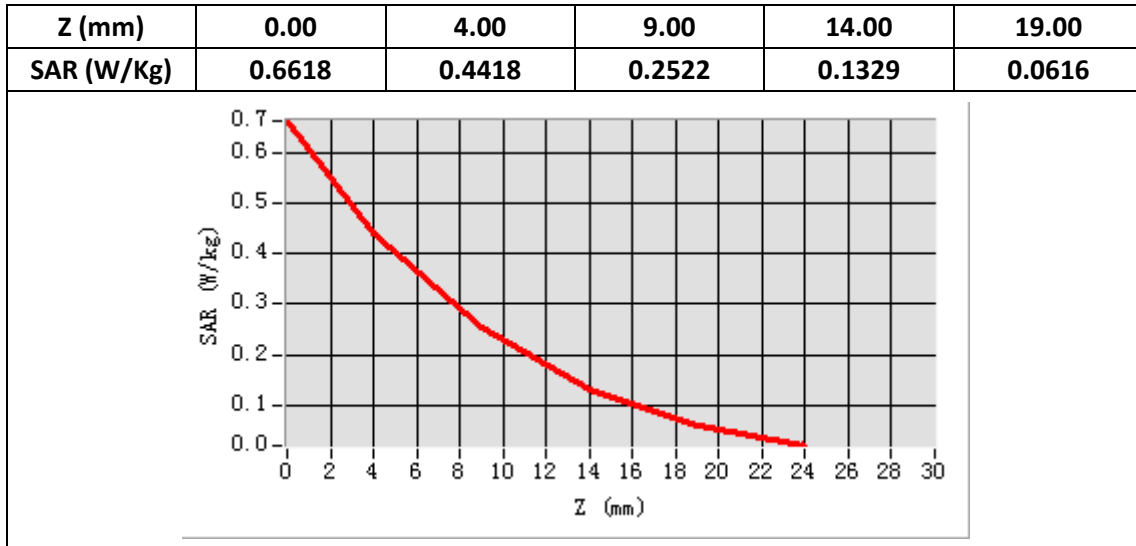
E-Field Probe	SATIMO SN_27/15_EPG0261
Frequency (MHz)	1880
Relative permittivity (real part)	53.41
Relative permittivity (imaginary part)	14.49
Conductivity (S/m)	1.53
Variation (%)	-3.99
ConvF:	2.39



Maximum location: X=7.00, Y=-40.00

SAR Peak: 0.67W/kg

SAR 10g (W/Kg)	0.196989
SAR 1g (W/Kg)	0.401596



Plot 5: WCDMA1900, Left Cheek, Middle,10mm

Type: Phone measurement

Date of measurement: 12/18/2019

Measurement duration: 22 minutes 08 seconds

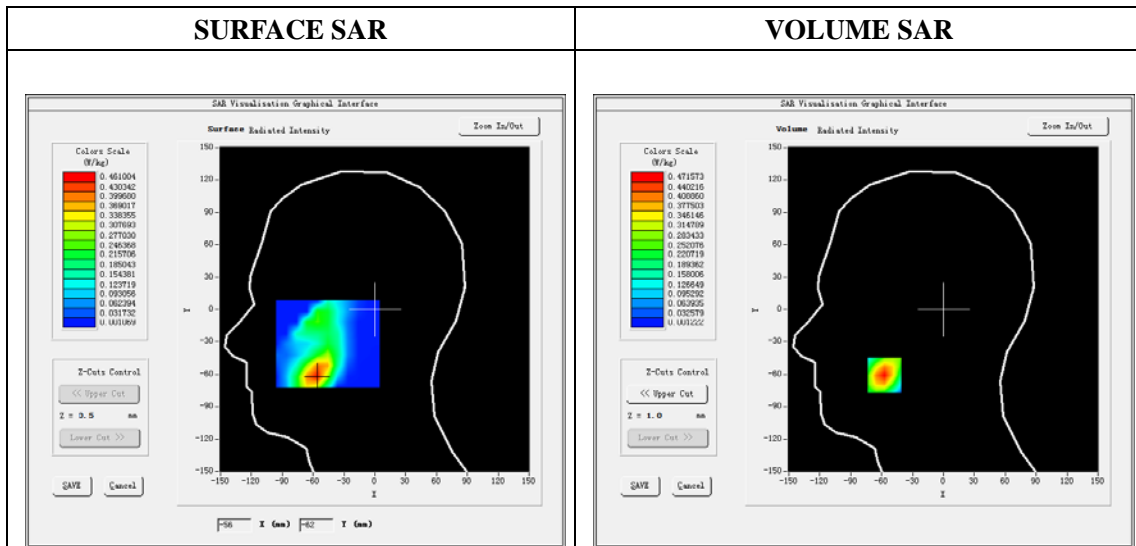
Mobile Phone IMEI number: --

A. Experimental conditions.

Area Scan	dx=8mm dy=8mm
ZoomScan	5x5x7,dx=8mm dy=8mm dz=5mm
Phantom	Validation plane
Device Position	Left Cheek
Band	Band2_WCDMA1900
Channels	9400
Signal	WCDMA (Duty cycle: 1:1)

B. SAR Measurement Results

E-Field Probe	SATIMO SN_27/15_EPG0261
Frequency (MHz)	1880
Relative permittivity (real part)	40.52
Relative permittivity (imaginary)	13.26
Conductivity (S/m)	1.40
Variation (%)	1.72
ConvF:	2.34

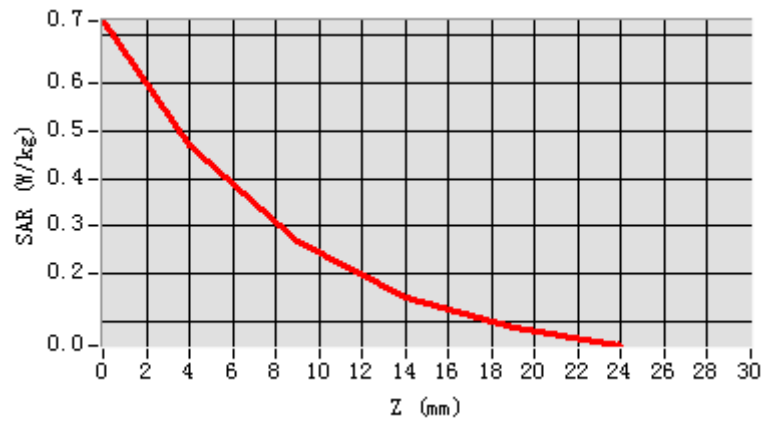


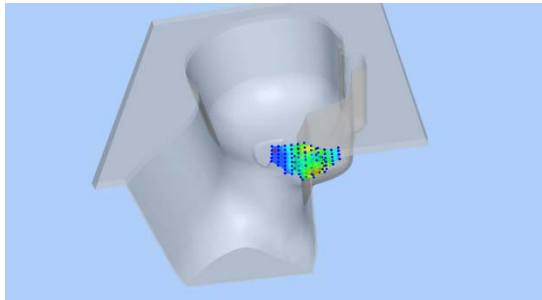
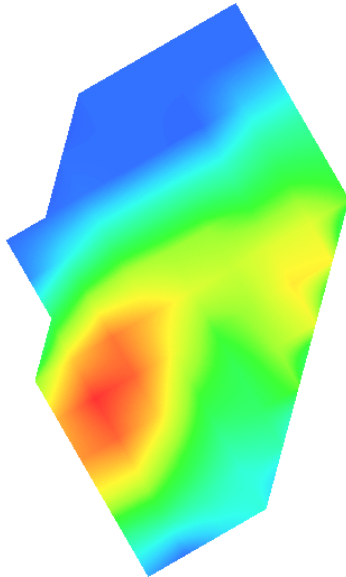
Maximum location: X=-57.00, Y=-61.00

SAR Peak: 0.73W/kg

SAR 10g (W/Kg)	0.230756
SAR 1g (W/Kg)	0.438719

Z (mm)	0.00	4.00	9.00	14.00	19.00
SAR (W/Kg)	0.7308	0.4716	0.2655	0.1493	0.0865



3D screen shot	Hot spot position
	

Plot 6: WCDMA1900, Back, Middle,10mm

Type: Phone measurement

Date of measurement: 12/18/2019

Measurement duration: 22 minutes 10 seconds

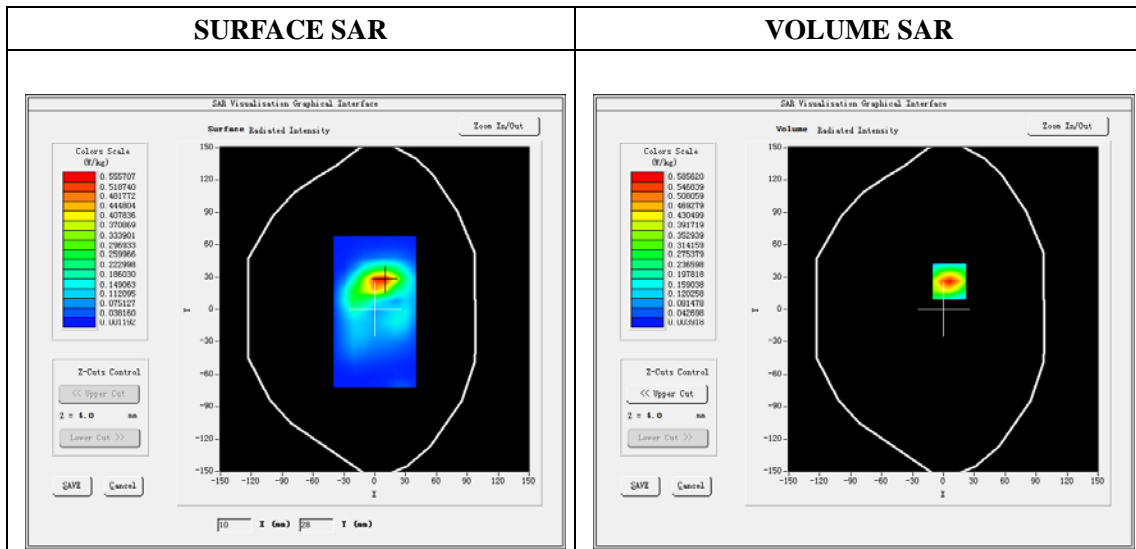
Mobile Phone IMEI number: --

A. Experimental conditions.

Area Scan	dx=8mm dy=8mm
ZoomScan	5x5x7,dx=8mm dy=8mm dz=5mm
Phantom	Validation plane
Device Position	Back
Band	Band2_WCDMA1900
Channels	9400
Signal	WCDMA (Duty cycle: 1:1)

B. SAR Measurement Results

E-Field Probe	SATIMO SN_27/15_EPG0261
Frequency (MHz)	1880
Relative permittivity (real part)	53.41
Relative permittivity (imaginary)	14.49
Conductivity (S/m)	1.53
Variation (%)	-4.83
ConvF:	2.39

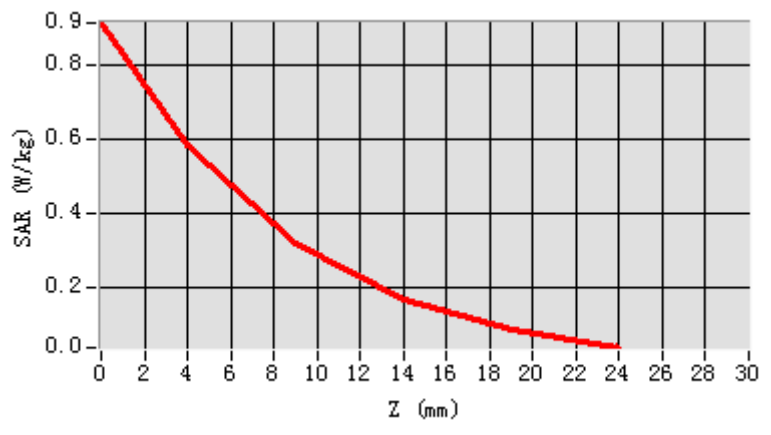


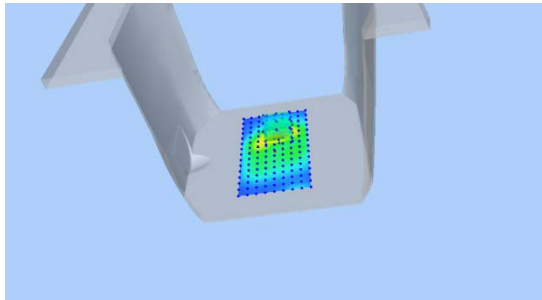
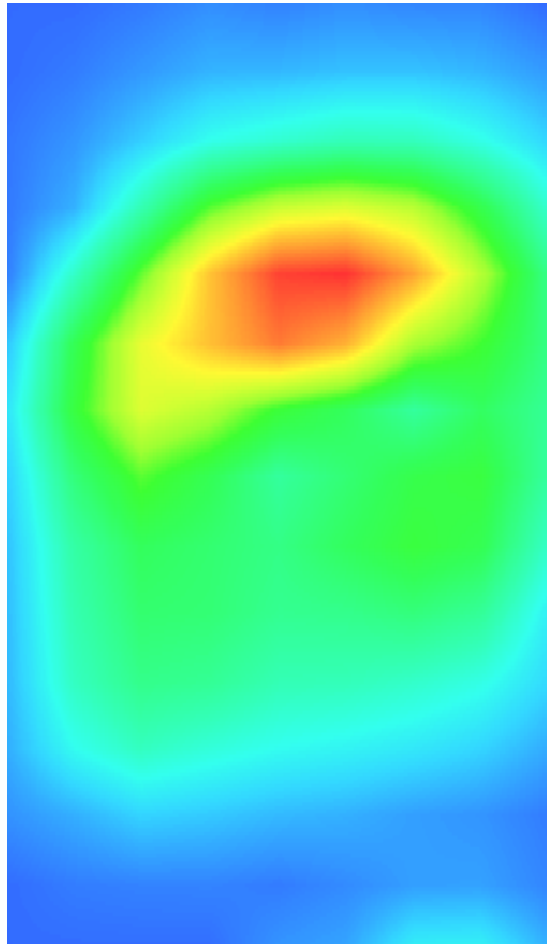
Maximum location: X=6.00, Y=26.00

SAR Peak: 0.92W/kg

SAR 10g (W/Kg)	0.262642
SAR 1g (W/Kg)	0.533127

Z (mm)	0.00	4.00	9.00	14.00	19.00
SAR (W/Kg)	0.9162	0.5856	0.3197	0.1670	0.0834



3D screen shot	Hot spot position
	

Plot 7: WCDMA1700, Left Cheek, High

Type: Phone measurement

Date of measurement: 12/17/2019

Measurement duration: 22 minutes 09 seconds

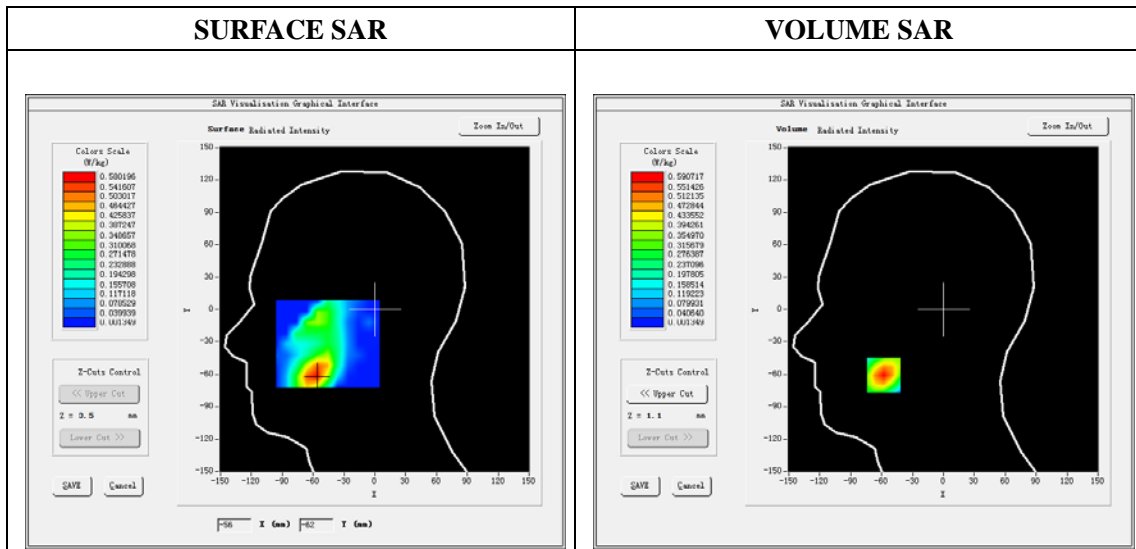
Mobile Phone IMEI number: --

A. Experimental conditions.

Area Scan	dx=8mm dy=8mm
ZoomScan	5x5x7,dx=8mm dy=8mm dz=5mm
Phantom	Validation plane
Device Position	Left Cheek
Band	Band2_WCDMA1700
Channels	1513
Signal	WCDMA (Duty cycle: 1:1)

B. SAR Measurement Results

E-Field Probe	SATIMO SN_27/15_EPG0261
Frequency (MHz)	1752.6
Relative permittivity (real part)	40.61
Relative permittivity (imaginary)	14.10
Conductivity (S/m)	1.41
Variation (%)	2.10
ConvF:	2.14

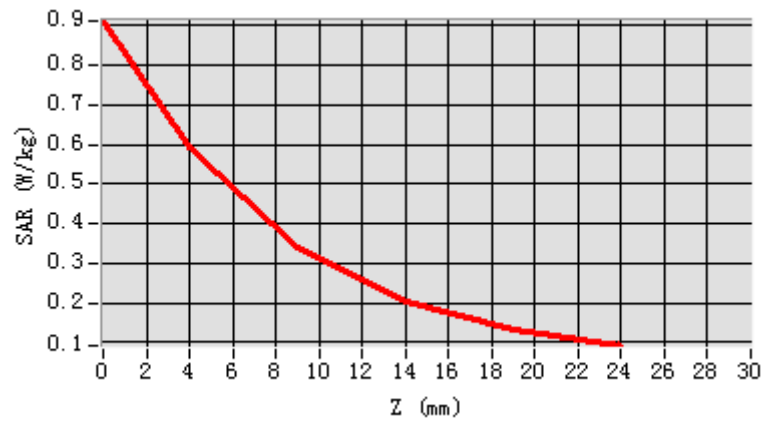


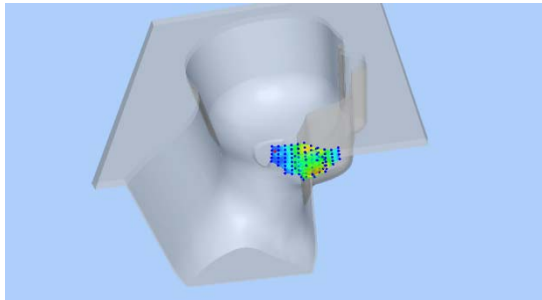
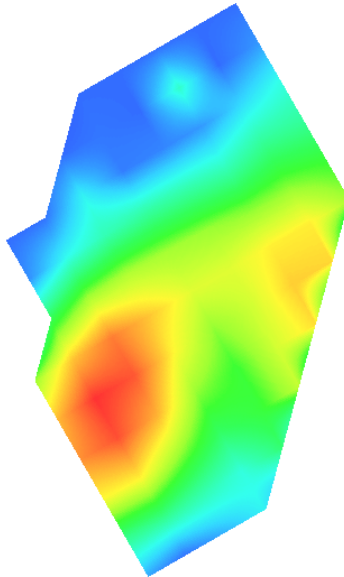
Maximum location: X=-58.00, Y=-61.00

SAR Peak: 0.91W/kg

SAR 10g (W/Kg)	0.307529
SAR 1g (W/Kg)	0.561836

Z (mm)	0.00	4.00	9.00	14.00	19.00
SAR (W/Kg)	0.9116	0.5907	0.3404	0.2040	0.1338



3D screen shot	Hot spot position
	

Plot 8: WCDMA1700, Back, High,10mm

Type: Phone measurement

Date of measurement: 12/17/2019

Measurement duration: 22 minutes 13 seconds

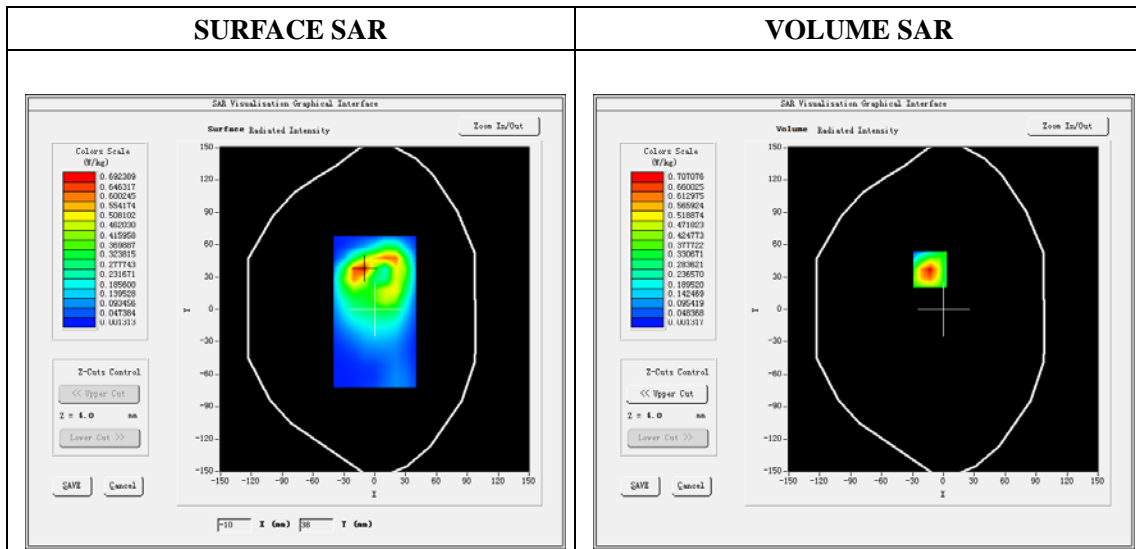
Mobile Phone IMEI number: --

A. Experimental conditions.

Area Scan	dx=8mm dy=8mm
ZoomScan	5x5x7,dx=8mm dy=8mm dz=5mm
Phantom	Validation plane
Device Position	Face
Band	Band2_WCDMA1700
Channels	1513
Signal	WCDMA (Duty cycle: 1:1)

B. SAR Measurement Results

E-Field Probe	SATIMO SN_27/15_EPG0261
Frequency (MHz)	1752.6
Relative permittivity (real part)	53.50
Relative permittivity (imaginary)	15.40
Conductivity (S/m)	1.54
Variation (%)	-1.09
ConvF:	2.22

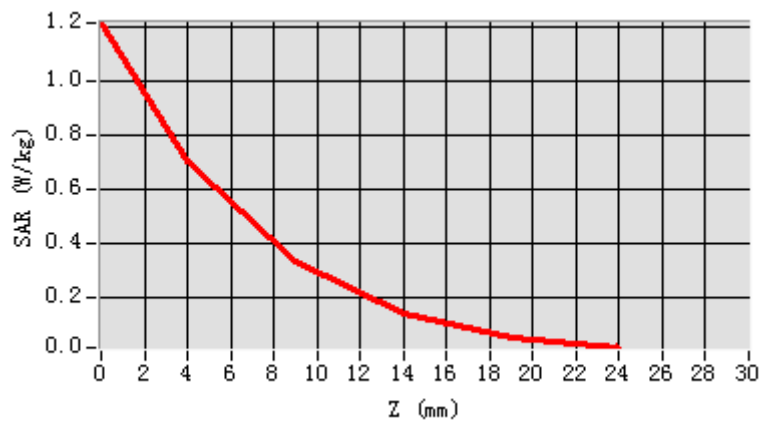


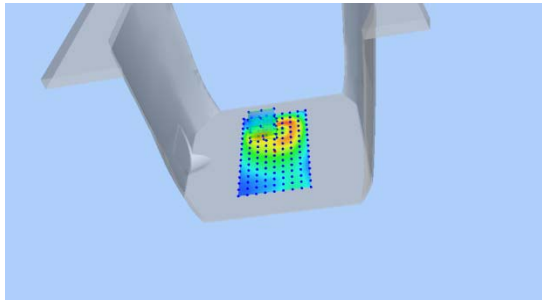
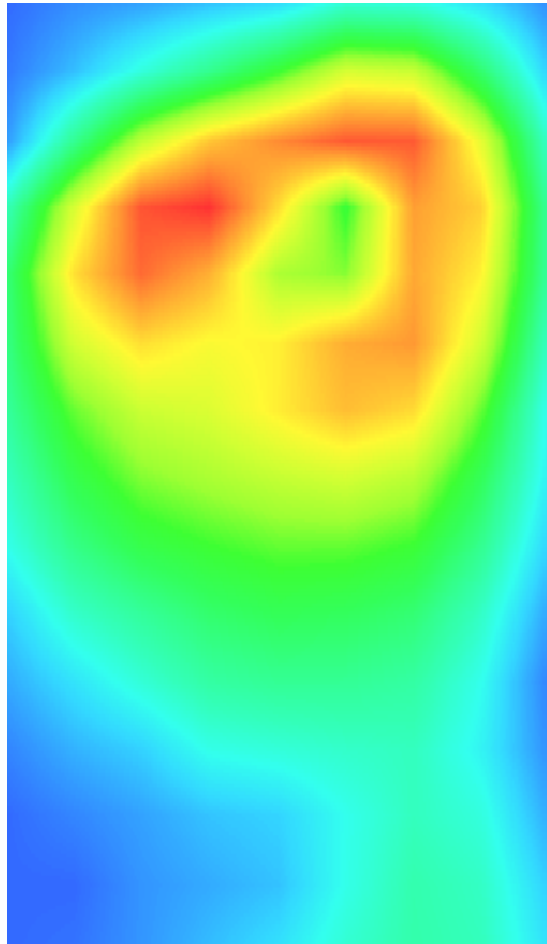
Maximum location: X=-13.00, Y=37.00

SAR Peak: 1.24W/kg

SAR 10g (W/Kg)	0.302867
SAR 1g (W/Kg)	0.659678

Z (mm)	0.00	4.00	9.00	14.00	19.00
SAR (W/Kg)	1.2185	0.7071	0.3289	0.1382	0.0512



3D screen shot	Hot spot position
	

Plot 9: WCDMA850, Right Cheek, High

Type: Phone measurement

Date of measurement: 12/16/2019

Measurement duration: 22 minutes 11 seconds

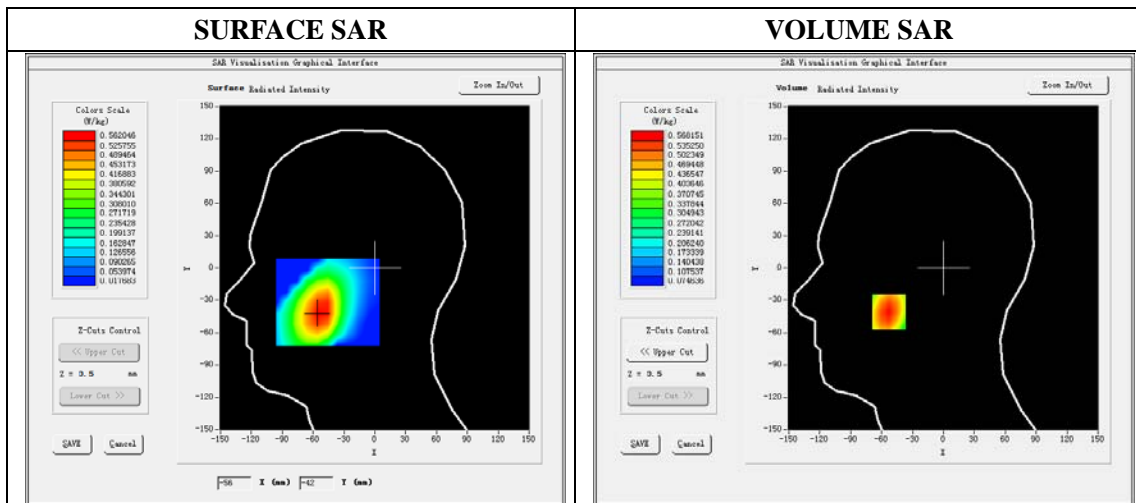
Mobile Phone IMEI number: --

A. Experimental conditions.

Area Scan	dx=8mm dy=8mm
ZoomScan	5x5x7,dx=8mm dy=8mm dz=5mm
Phantom	Validation plane
Device Position	Right Cheek
Band	Band5_WCDMA850
Channels	4233
Signal	WCDMA (Duty cycle: 1:1)

B. SAR Measurement Results

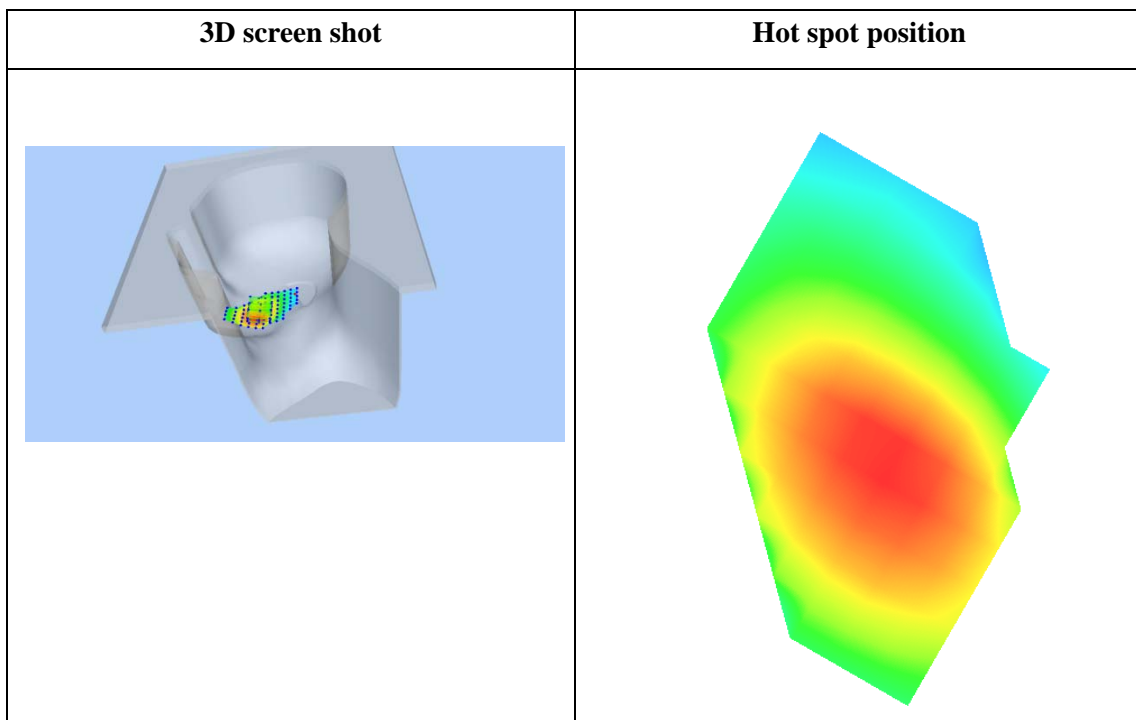
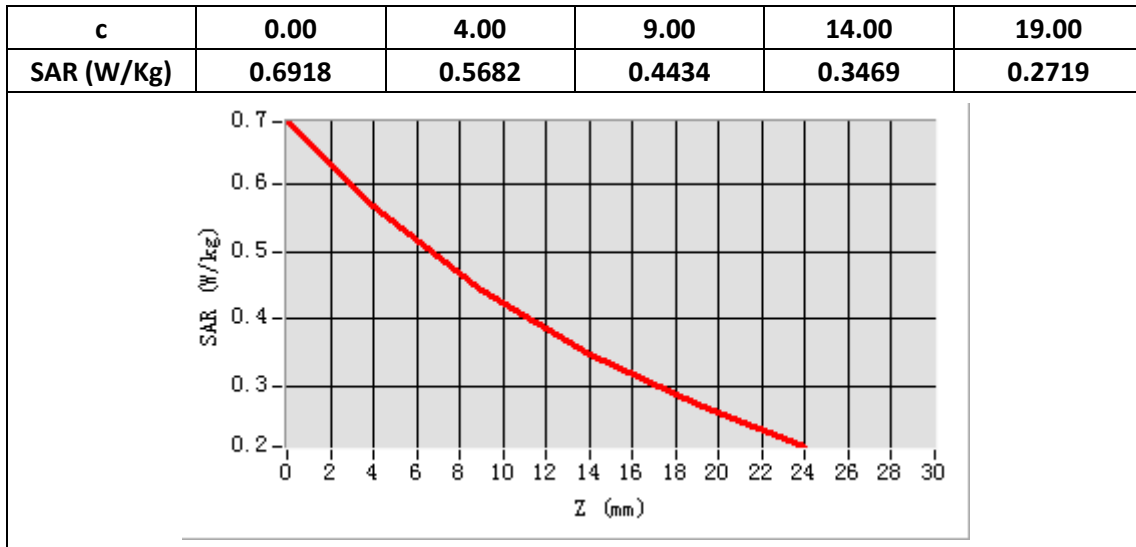
E-Field Probe	SATIMO SN_27/15_EPG0261
Frequency (MHz)	846.6
Relative permittivity (real part)	41.59
Relative permittivity (imaginary)	19.83
Conductivity (S/m)	0.92
Variation (%)	-3.46
ConvF:	1.92



Maximum location: X=-53.00, Y=-41.00

SAR Peak: 0.69W/kg

SAR 10g (W/Kg)	0.397188
SAR 1g (W/Kg)	0.545492



Plot 10: WCDMA850, Back, High,10mm

Type: Phone measurement

Date of measurement: 12/16/2019

Measurement duration: 22 minutes 14 seconds

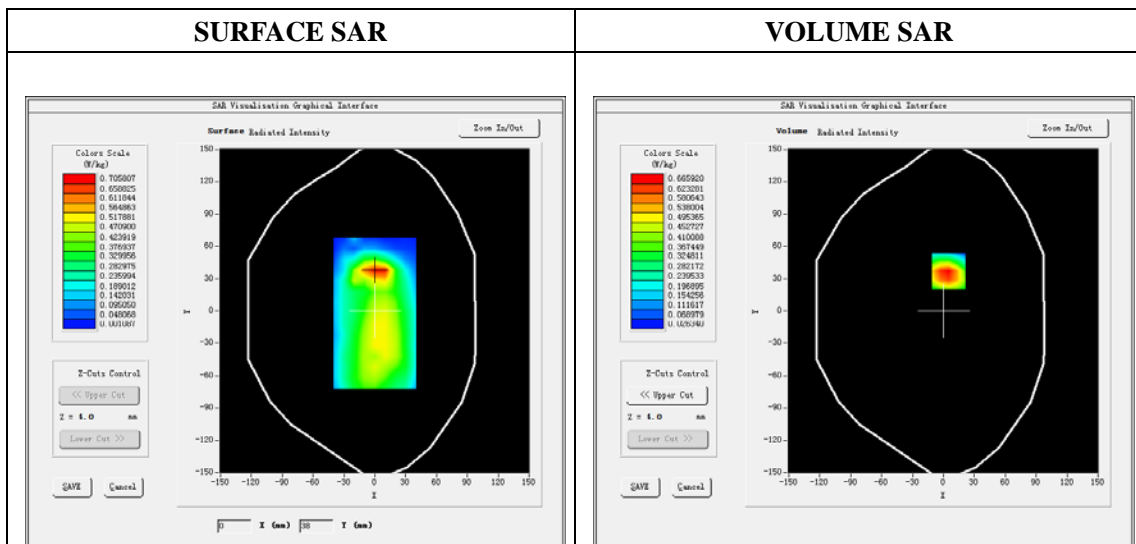
Mobile Phone IMEI number: --

A. Experimental conditions.

Area Scan	dx=8mm dy=8mm
ZoomScan	5x5x7,dx=8mm dy=8mm dz=5mm
Phantom	Validation plane
Device Position	Back
Band	Band5_WCDMA850
Channels	4233
Signal	WCDMA (Duty cycle: 1:1)

B. SAR Measurement Results

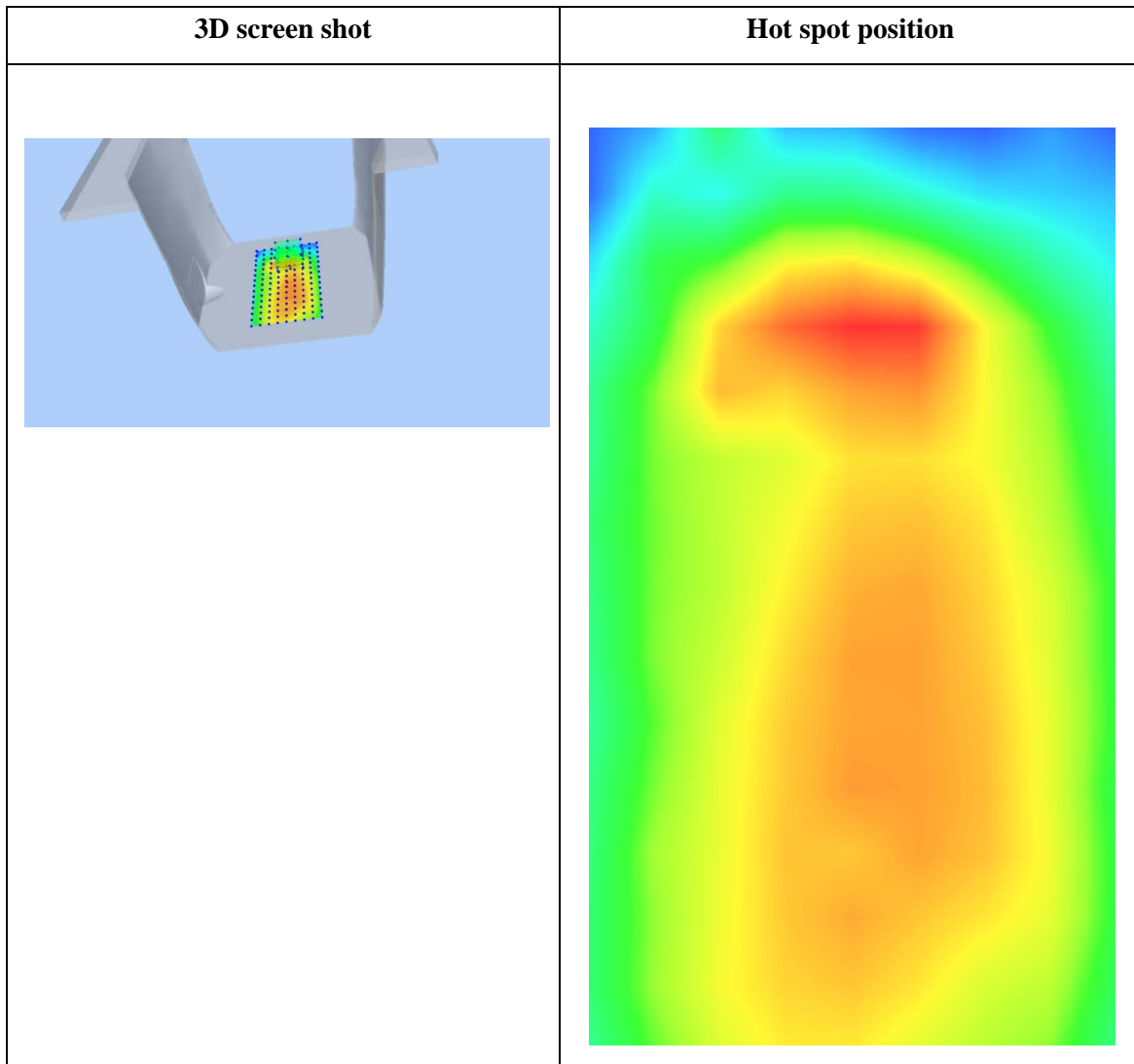
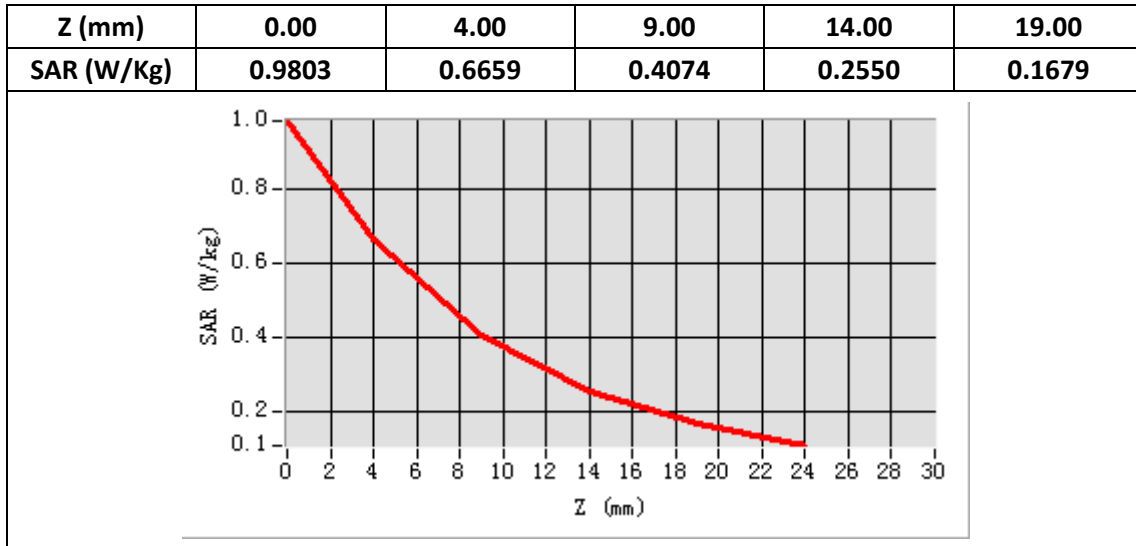
E-Field Probe	SATIMO SN_27/15_EPG0261
Frequency (MHz)	846.6
Relative permittivity (real part)	55.29
Relative permittivity (imaginary)	21.13
Conductivity (S/m)	0.98
Variation (%)	3.25
ConvF:	1.99



Maximum location: X=5.00, Y=37.00

SAR Peak: 1.00W/kg

SAR 10g (W/Kg)	0.373079
SAR 1g (W/Kg)	0.650548



Plot 11: LTE Band2, 20MHz, Left Cheek, Middle

Type: Phone measurement

Date of measurement: 12/18/2019

Measurement duration: 22 minutes 12 econds

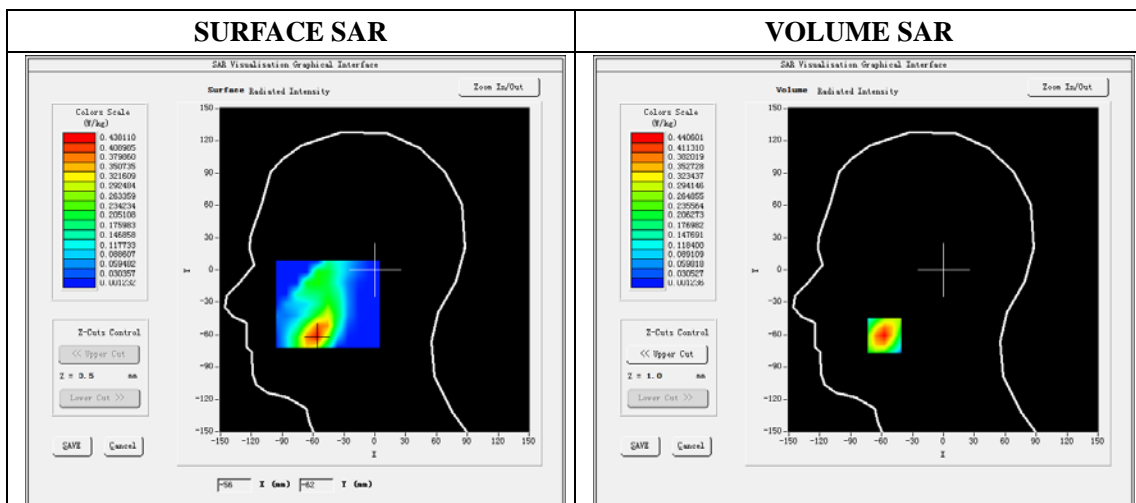
Mobile Phone IMEI number: --

A. Experimental conditions.

Area Scan	dx=8mm dy=8mm
ZoomScan	5x5x7,dx=8mm dy=8mm dz=5mm
Phantom	Validation plane
Device Position	Left Cheek
Band	LTE Band 2
Channels	18900
Signal	LTE (Duty cycle: 1:1)

B. SAR Measurement Results

E-Field Probe	SATIMO SN_27/15_EPG0261
Frequency (MHz)	1880
Relative permittivity (real part)	40.52
Relative permittivity (imaginary)	13.26
Conductivity (S/m)	1.40
Variation (%)	-4.94
ConvF:	2.34

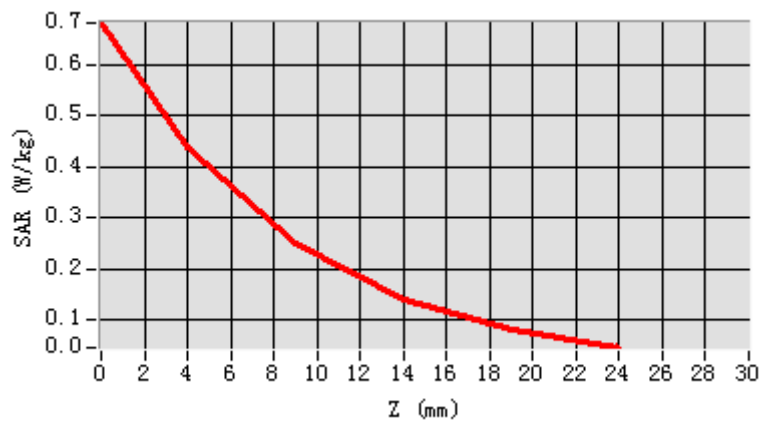


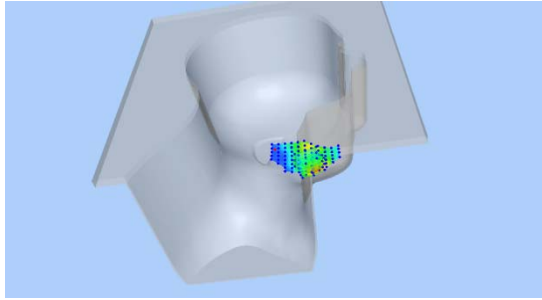
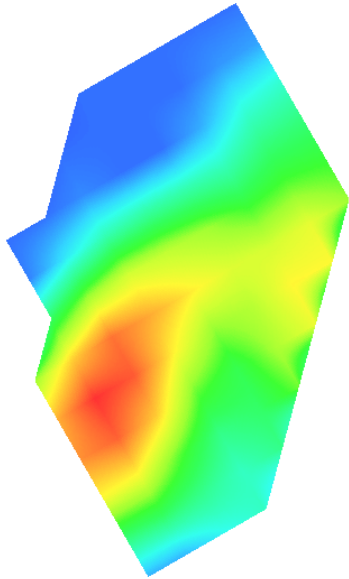
Maximum location: X=-57.00, Y=-61.00

SAR Peak: 0.68 W/kg

SAR 10g (W/Kg)	0.218728
SAR 1g (W/Kg)	0.410925

Z (mm)	0.00	4.00	9.00	14.00	19.00
SAR (W/Kg)	0.6821	0.4406	0.2486	0.1403	0.0817



3D screen shot	Hot spot position
	

Plot 12: LTE Band2, 20MHz, Back, Middle,10mm

Type: Phone measurement

Date of measurement: 12/18/2019

Measurement duration: 22 minutes 15 seconds

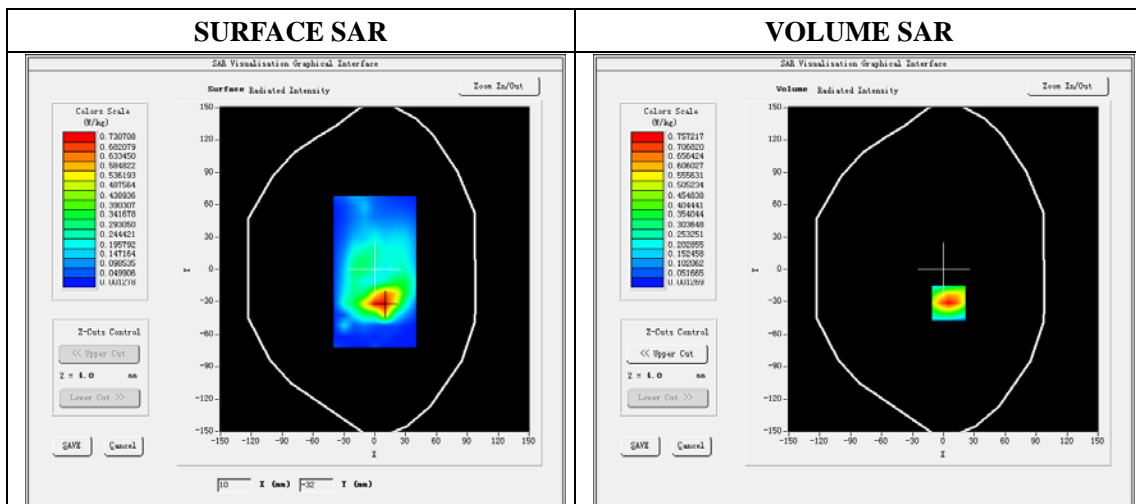
Mobile Phone IMEI number: --

A. Experimental conditions.

Area Scan	dx=8mm dy=8mm
ZoomScan	5x5x7,dx=8mm dy=8mm dz=5mm
Phantom	Validation plane
Device Position	Back
Band	LTE Band 2
Channels	18900
Signal	LTE (Duty cycle: 1:1)

B. SAR Measurement Results

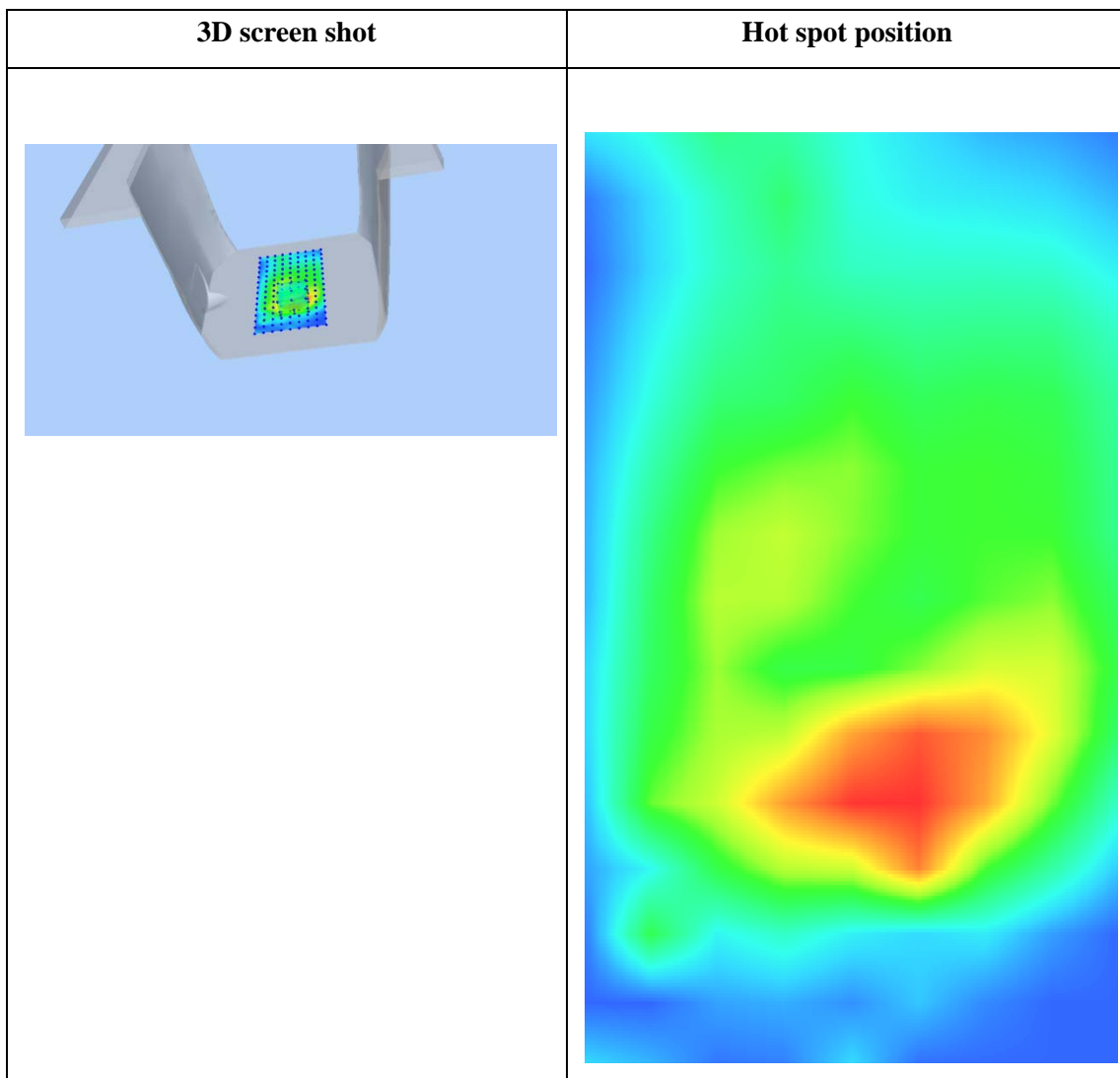
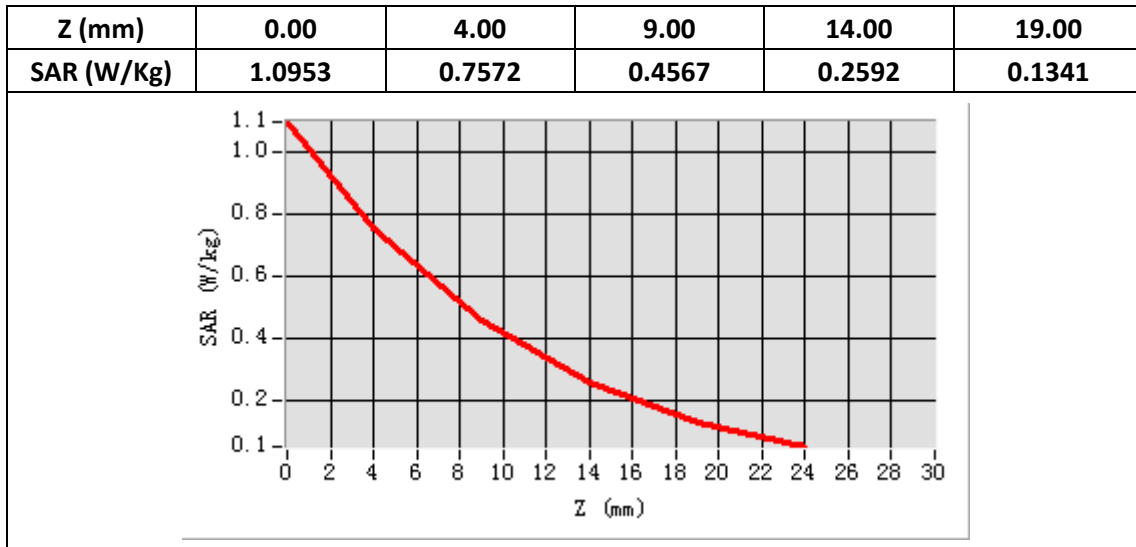
E-Field Probe	SATIMO SN_27/15_EPG0261
Frequency (MHz)	1880
Relative permittivity (real part)	53.41
Relative permittivity (imaginary)	14.49
Conductivity (S/m)	1.53
Variation (%)	3.37
ConvF:	2.39



Maximum location: X=5.00, Y=-31.00

SAR Peak: 1.11W/kg

SAR 10g (W/Kg)	0.360978
SAR 1g (W/Kg)	0.694997



Plot 13: LTE Band4, 20MHz, Left Cheek, Middle

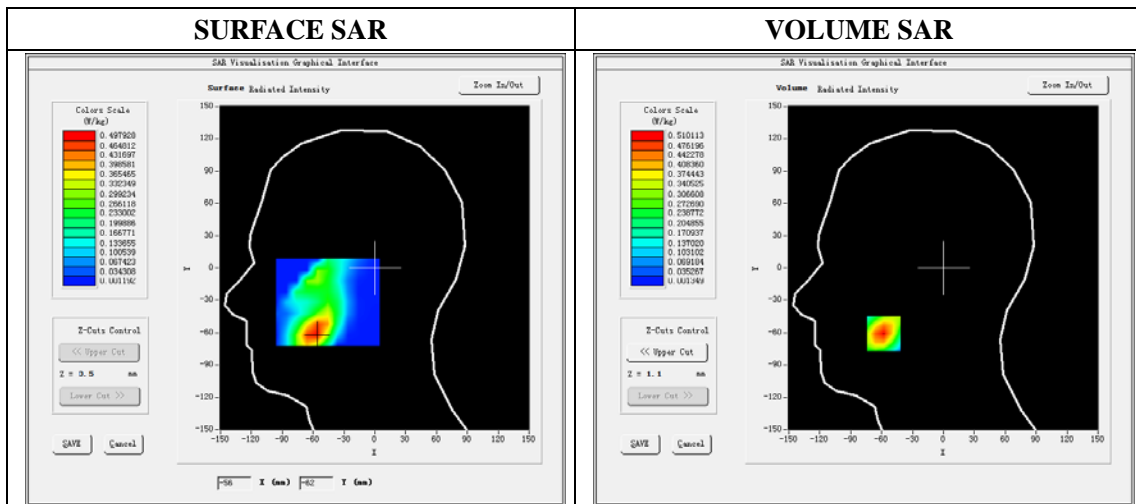
Type: Phone measurement
 Date of measurement: 12/17/2019
 Measurement duration: 22 minutes 16 econds
 Mobile Phone IMEI number: --

A. Experimental conditions.

Area Scan	dx=8mm dy=8mm
ZoomScan	5x5x7,dx=8mm dy=8mm dz=5mm
Phantom	Validation plane
Device Position	Left Cheek
Band	LTE Band 4
Channels	20175
Signal	LTE (Duty cycle: 1:1)

B. SAR Measurement Results

E-Field Probe	SATIMO SN_27/15_EPG0261
Frequency (MHz)	1732.5
Relative permittivity (real part)	40.61
Relative permittivity (imaginary)	14.10
Conductivity (S/m)	1.41
Variation (%)	-4.73
ConvF:	2.14

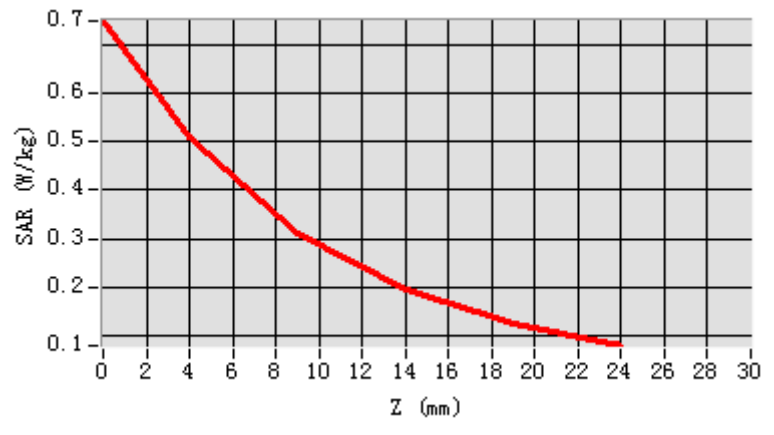


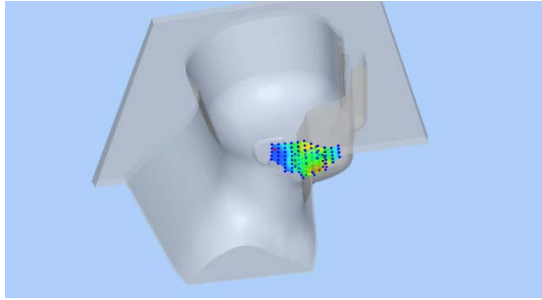
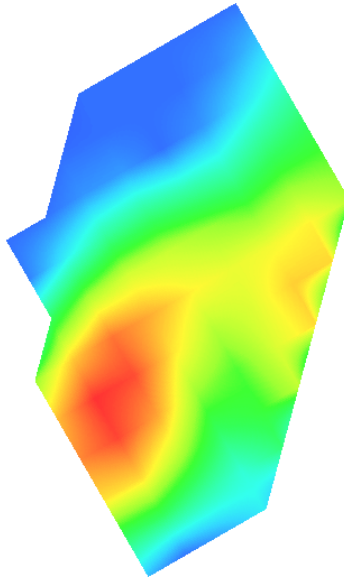
Maximum location: X=-58.00, Y=-61.00

SAR Peak: 0.75 W/kg

SAR 10g (W/Kg)	0.272737
SAR 1g (W/Kg)	0.486125

Z (mm)	0.00	4.00	9.00	14.00	19.00
SAR (W/Kg)	0.7490	0.5101	0.3118	0.1931	0.1240



3D screen shot	Hot spot position
	

Plot 14: LTE Band4, 20MHz, Back, Middle,10mm

Type: Phone measurement

Date of measurement: 12/17/2019

Measurement duration: 22 minutes 18 seconds

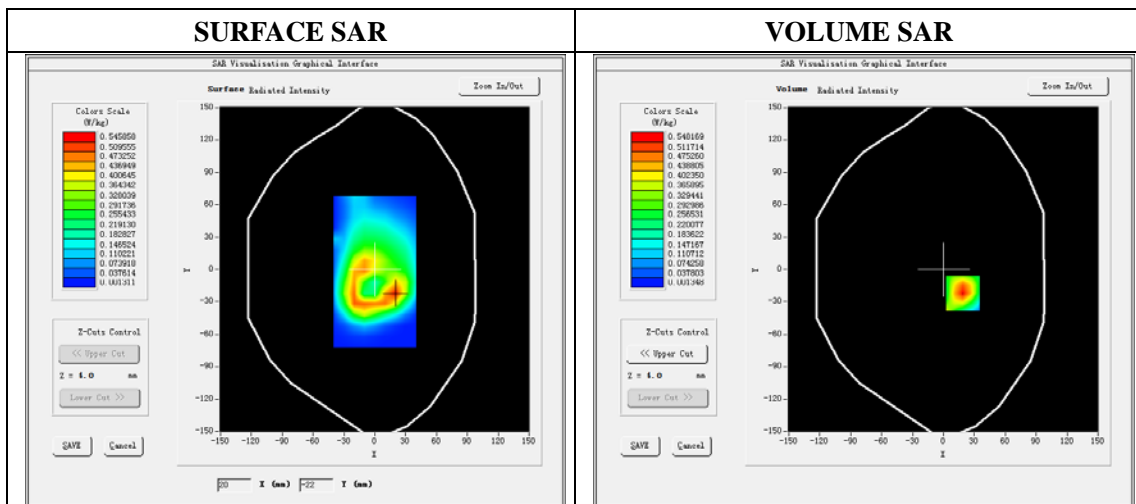
Mobile Phone IMEI number: --

A. Experimental conditions.

Area Scan	dx=8mm dy=8mm
ZoomScan	5x5x7,dx=8mm dy=8mm dz=5mm
Phantom	Validation plane
Device Position	Back
Band	LTE Band 4
Channels	20175
Signal	LTE (Duty cycle: 1:1)

B. SAR Measurement Results

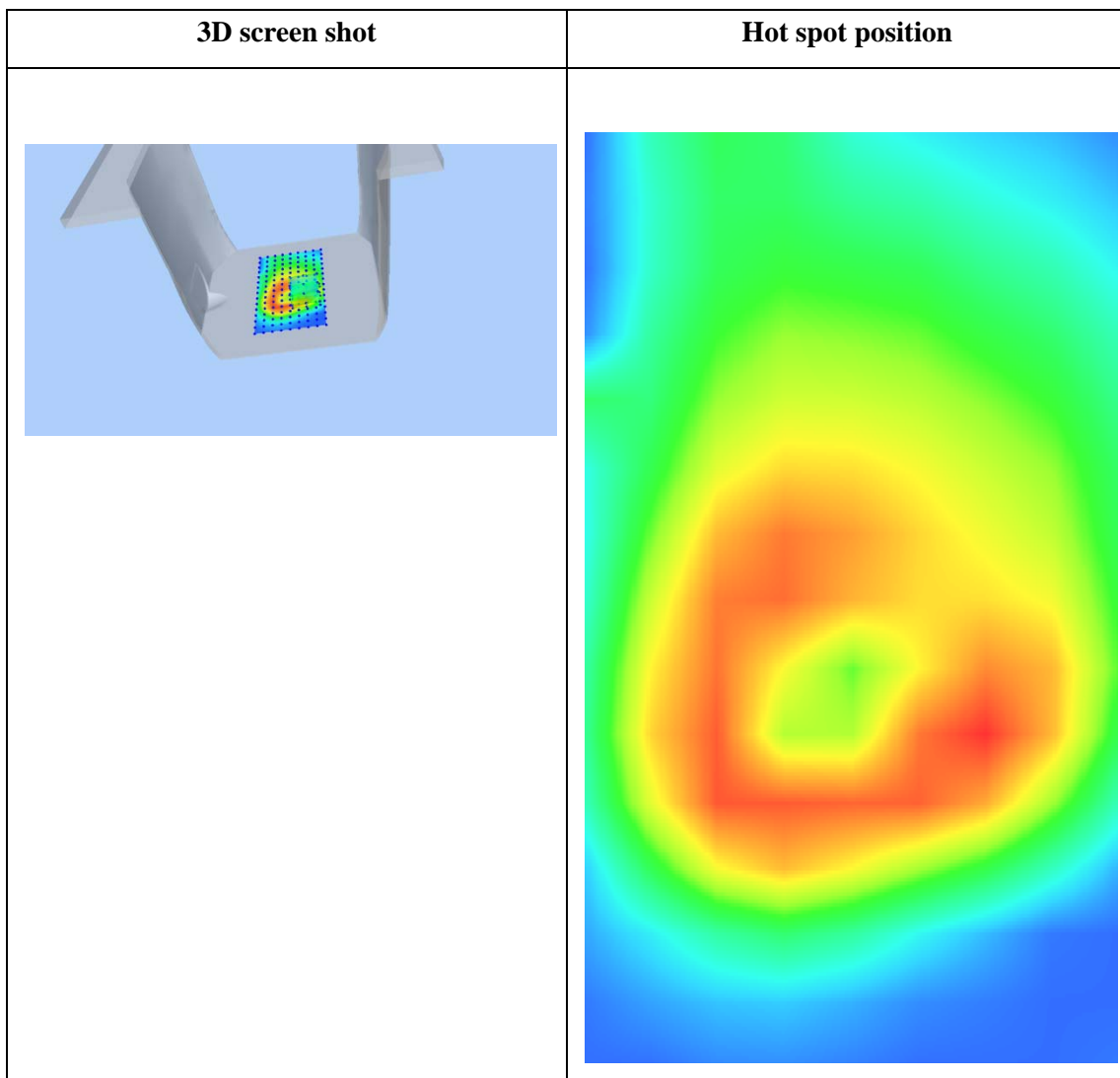
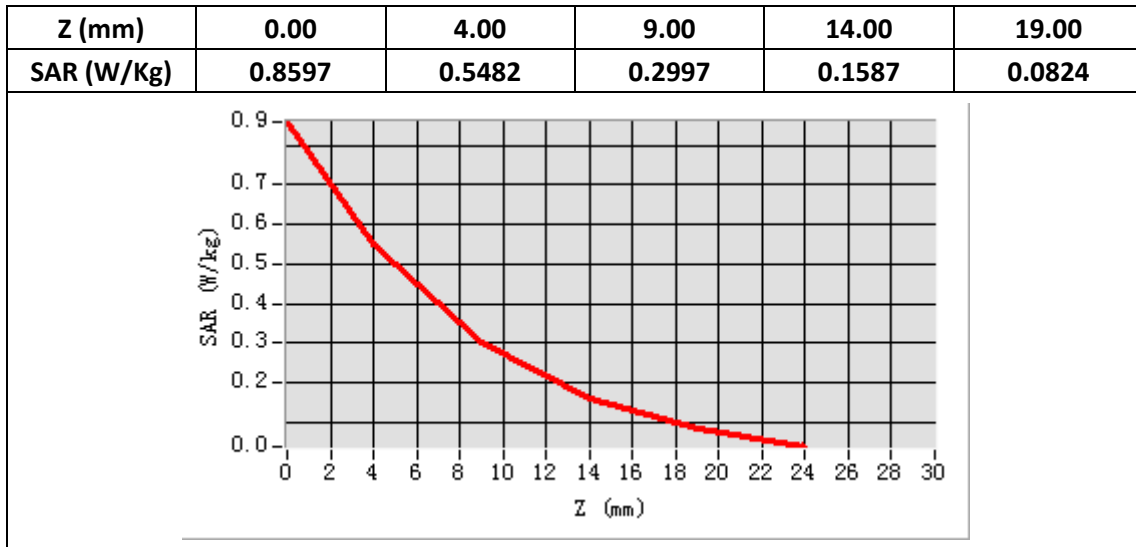
E-Field Probe	SATIMO SN_27/15_EPG0261
Frequency (MHz)	1732.5
Relative permittivity (real part)	53.50
Relative permittivity (imaginary)	15.40
Conductivity (S/m)	1.54
Variation (%)	-0.68
ConvF:	2.22



Maximum location: X=19.00, Y=-22.00

SAR Peak: 0.87W/kg

SAR 10g (W/Kg)	0.261076
SAR 1g (W/Kg)	0.507417



Plot 15: LTE Band5, 10MHz,Right Cheek, Middle

Type: Phone measurement

Date of measurement: 12/16/2019

Measurement duration: 22 minutes 17 seconds

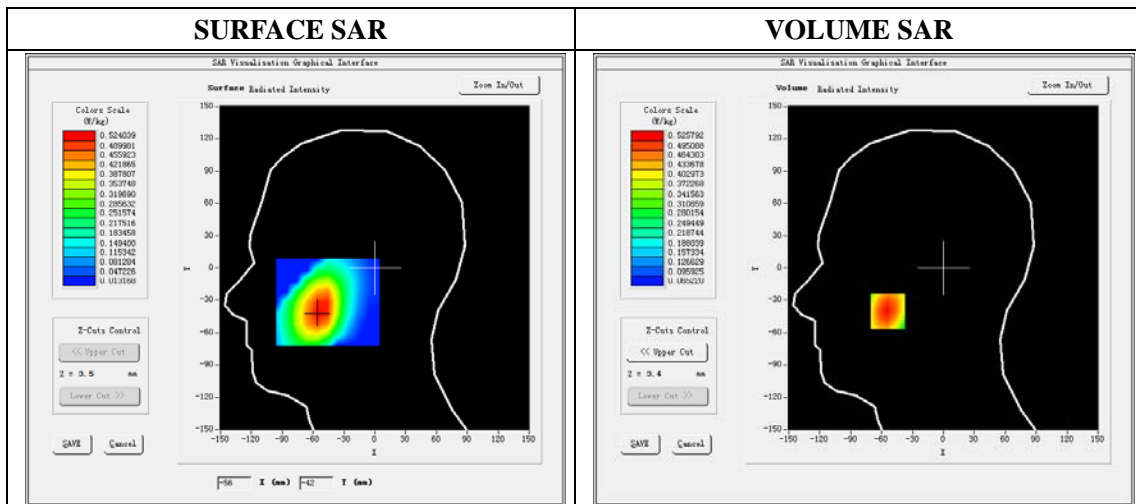
Mobile Phone IMEI number: --

A. Experimental conditions.

Area Scan	dx=8mm dy=8mm
ZoomScan	5x5x7,dx=8mm dy=8mm dz=5mm
Phantom	Validation plane
Device Position	Right Cheek
Band	LTE Band 5
Channels	20525
Signal	LTE (Duty cycle: 1:1)

B. SAR Measurement Results

E-Field Probe	SATIMO SN_27/15_EPG0261
Frequency (MHz)	836.5
Relative permittivity (real part)	41.59
Relative permittivity (imaginary)	19.83
Conductivity (S/m)	0.92
Variation (%)	-2.29
ConvF:	1.92

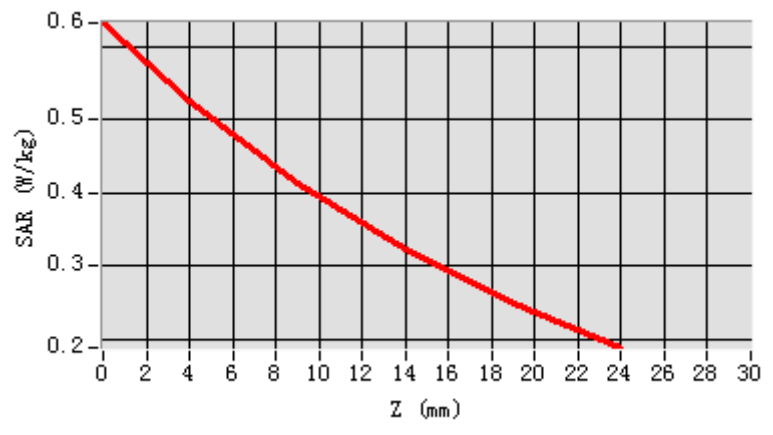


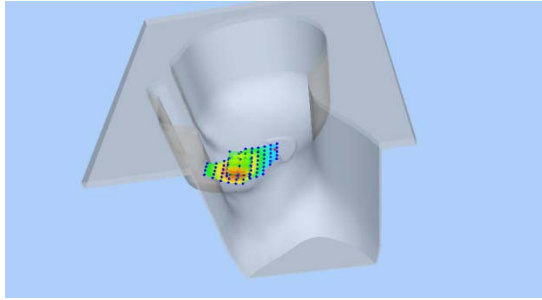
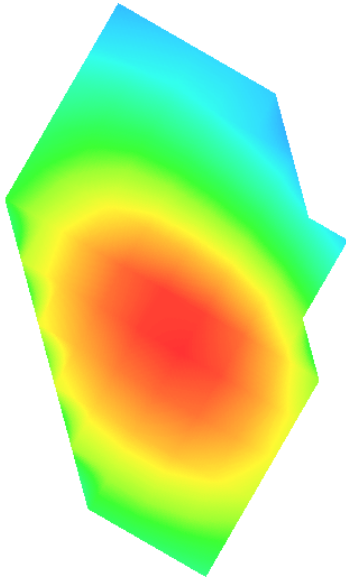
Maximum location: X=-54.00, Y=-40.00

SAR Peak: 0.63 W/kg

SAR 10g (W/Kg)	0.368793
SAR 1g (W/Kg)	0.504894

Z (mm)	0.00	4.00	9.00	14.00	19.00
SAR (W/Kg)	0.6324	0.5258	0.4142	0.3237	0.2501



3D screen shot	Hot spot position
	

Plot 16: LTE Band5, 10MHz, Back, Middle,10mm

Type: Phone measurement

Date of measurement: 12/16/2019

Measurement duration: 22 minutes 19 seconds

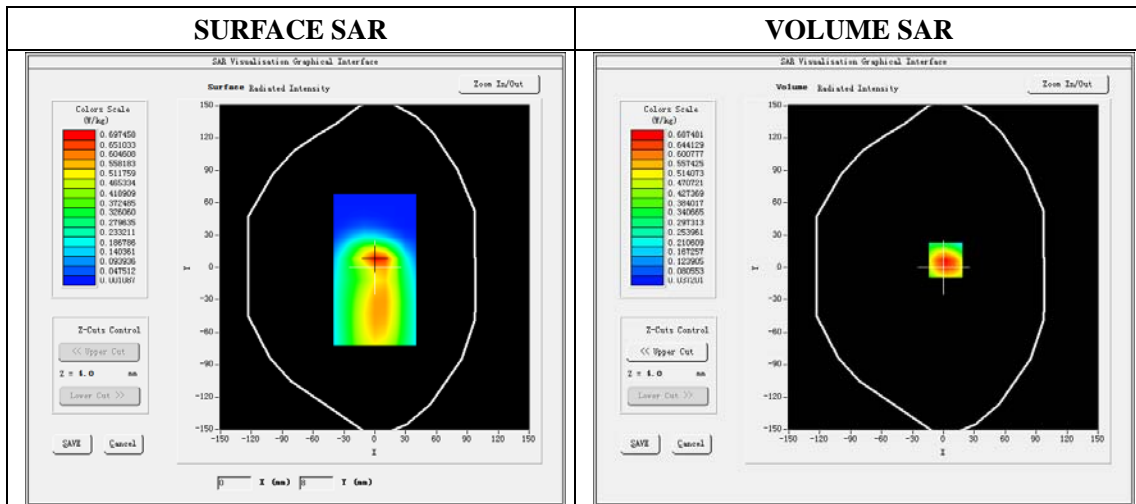
Mobile Phone IMEI number: --

A. Experimental conditions.

Area Scan	dx=8mm dy=8mm
ZoomScan	5x5x7,dx=8mm dy=8mm dz=5mm
Phantom	Validation plane
Device Position	Back
Band	LTE Band 5
Channels	20525
Signal	LTE (Duty cycle: 1:1)

B. SAR Measurement Results

E-Field Probe	SATIMO SN_27/15_EPG0261
Frequency (MHz)	836.5
Relative permittivity (real part)	55.29
Relative permittivity (imaginary)	21.13
Conductivity (S/m)	0.98
Variation (%)	-2.80
ConvF:	1.99

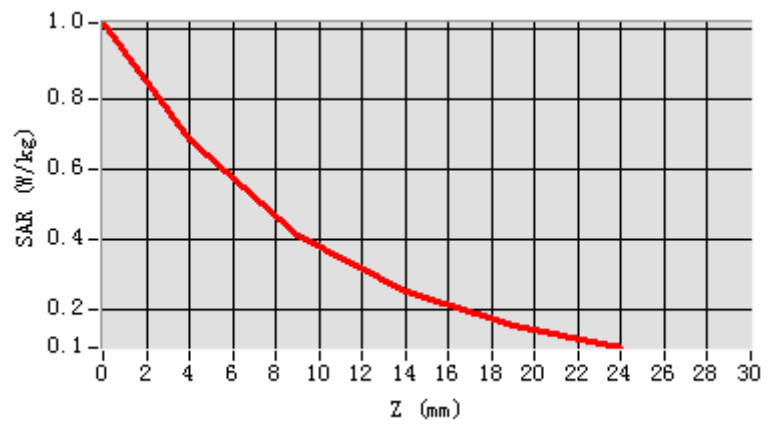


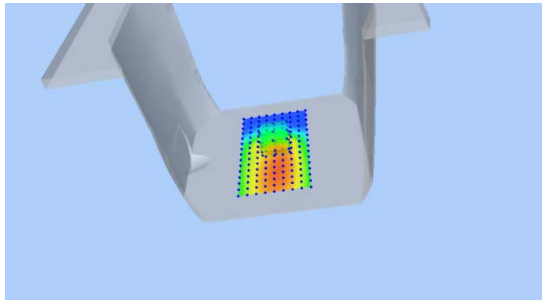
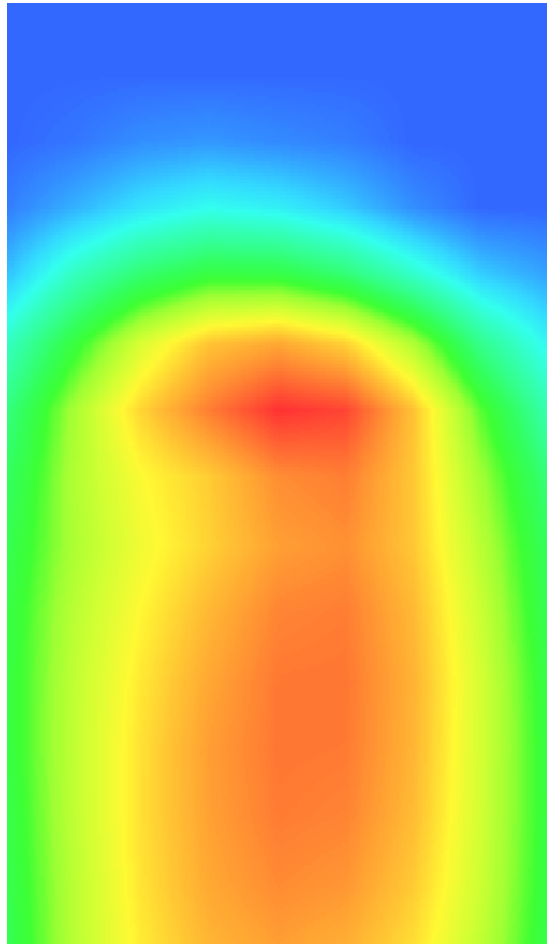
Maximum location: X=2.00, Y=7.00

SAR Peak: 1.03W/kg

SAR 10g (W/Kg)	0.391937
SAR 1g (W/Kg)	0.667244

Z (mm)	0.00	4.00	9.00	14.00	19.00
SAR (W/Kg)	1.0176	0.6875	0.4133	0.2486	0.1524



3D screen shot	Hot spot position
	

Plot 17: LTE Band7, 20MHz, Left Cheek, Middle

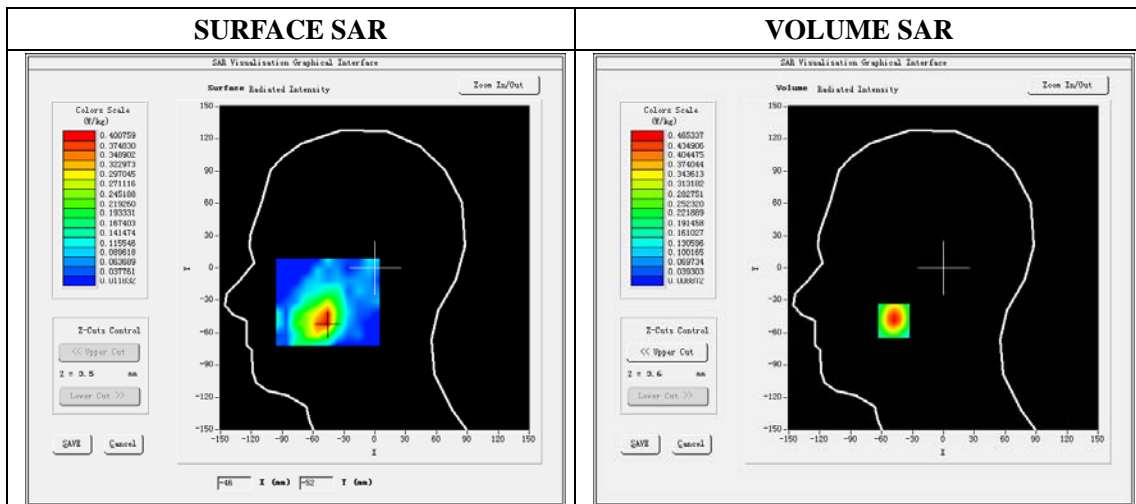
Type: Phone measurement
 Date of measurement: 12/20/2019
 Measurement duration: 22 minutes 20 seconds
 Mobile Phone IMEI number: --

A. Experimental conditions.

Area Scan	dx=5mm,dy=5mm
ZoomScan	7x7x8,dx=5mm dy=5mm dz=4mm
Phantom	Validation plane
Device Position	Left Cheek
Band	LTE Band 7
Channels	21350
Signal	LTE (Duty cycle: 1:1)

B. SAR Measurement Results

E-Field Probe	SATIMO SN_27/15_EPG0261
Frequency (MHz)	2560
Relative permittivity (real part)	39.16
Relative permittivity (imaginary)	13.71
Conductivity (S/m)	1.98
Variation (%)	-3.52
ConvF:	2.35

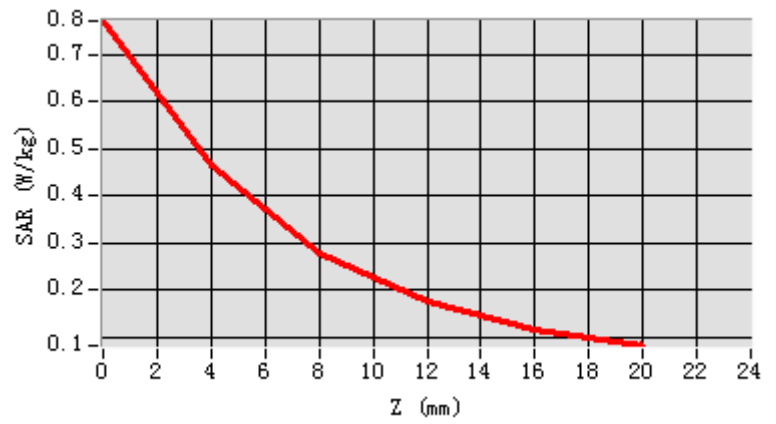


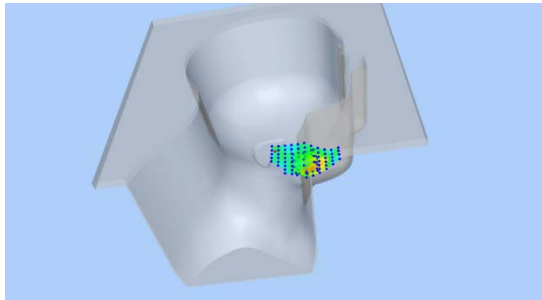
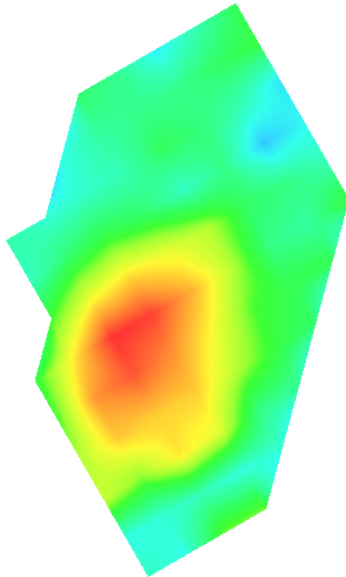
Maximum location: X=-48.00 Y=-49.00

SAR Peak: 0.78W/kg

SAR 10g (W/Kg)	0.247380
SAR 1g (W/Kg)	0.440960

Z (mm)	0.00	4.00	8.00	12.00	16.00
SAR (W/Kg)	0.7712	0.4653	0.2788	0.1734	0.1165



3D screen shot	Hot spot position
	

Plot 18: LTE Band7, 20MHz, Back, Middle,10mm

Type: Phone measurement

Date of measurement: 12/20/2019

Measurement duration: 22 minutes 06 seconds

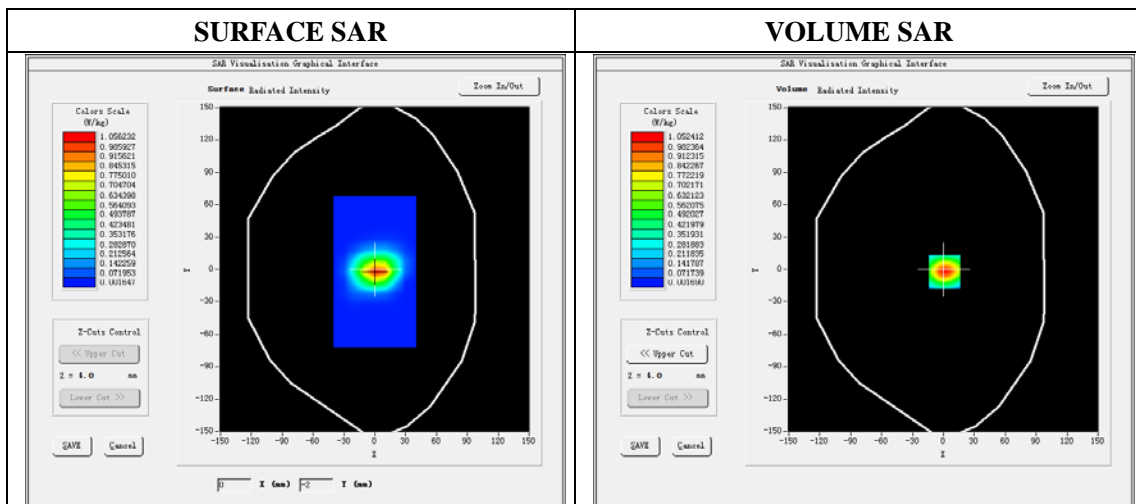
Mobile Phone IMEI number: --

A. Experimental conditions.

Area Scan	dx=5mm,dy=5mm
ZoomScan	7x7x8,dx=5mm dy=5mm dz=4mm
Phantom	Validation plane
Device Position	Back
Band	LTE Band 7
Channels	21350
Signal	LTE (Duty cycle: 1:1)

B. SAR Measurement Results

E-Field Probe	SATIMO SN_27/15_EPG0261
Frequency (MHz)	2560
Relative permittivity (real part)	52.66
Relative permittivity (imaginary)	15.09
Conductivity (S/m)	2.18
Variation (%)	-2.04
ConvF:	2.43

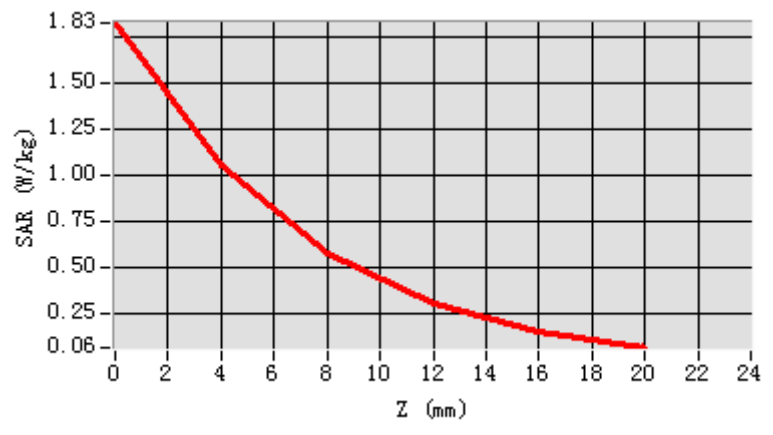


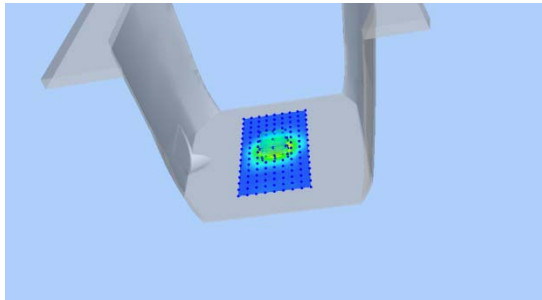
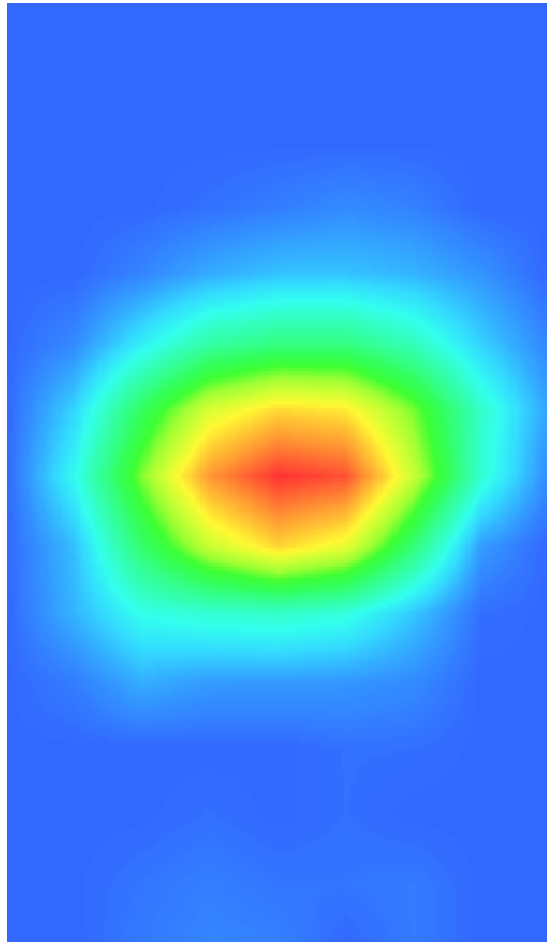
Maximum location: X=1.00 Y=-2.00

SAR Peak: 1.83 W/kg

SAR 10g (W/Kg)	0.429592
SAR 1g (W/Kg)	0.949669

Z (mm)	0.00	4.00	8.00	12.00	16.00
SAR (W/Kg)	1.8290	1.0524	0.5754	0.3010	0.1504



3D screen shot	Hot spot position
	

Plot 19: LTE Band66, 20MHz,Right Cheek, Middle

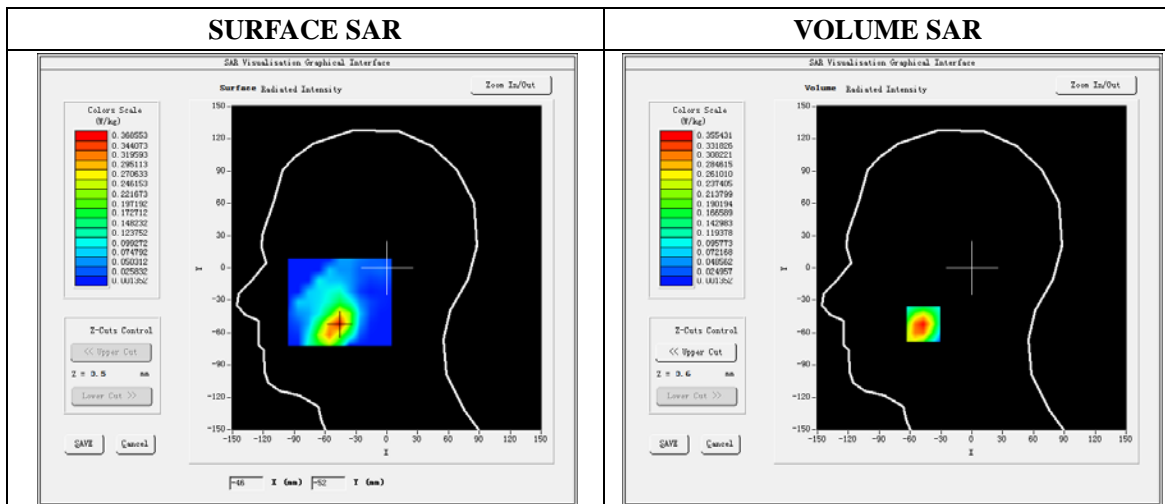
Type: Phone measurement
 Date of measurement: 12/17/2019
 Measurement duration: 22 minutes 18 seconds
 Mobile Phone IMEI number: --

A. Experimental conditions.

Area Scan	dx=8mm dy=8mm
ZoomScan	5x5x7,dx=8mm dy=8mm dz=5mm
Phantom	Validation plane
Device Position	Right Cheek
Band	LTE Band 66
Channels	132197
Signal	LTE (Duty cycle: 1:1)

B. SAR Measurement Results

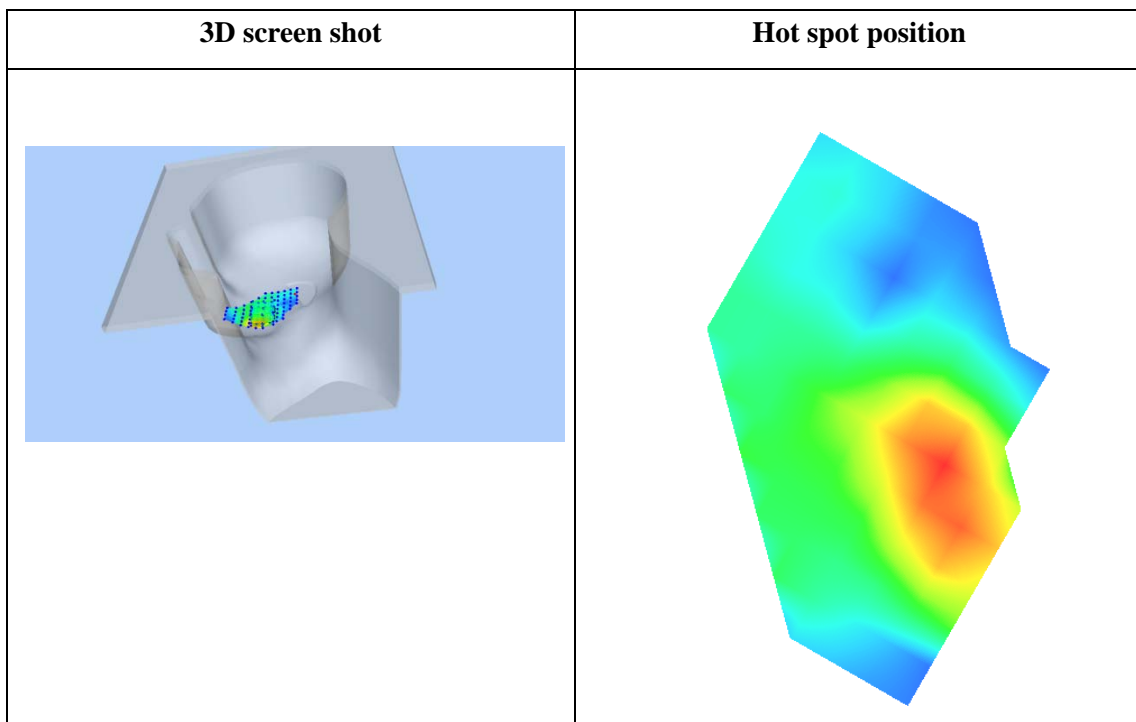
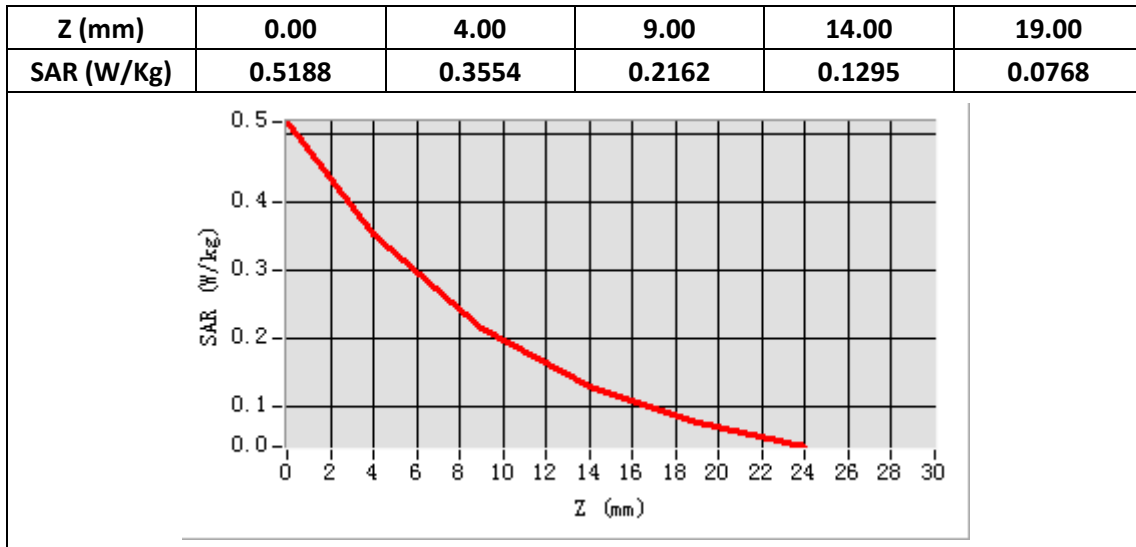
E-Field Probe	SATIMO SN_27/15_EPG0261
Frequency (MHz)	1732.5
Relative permittivity (real part)	40.61
Relative permittivity (imaginary)	14.10
Conductivity (S/m)	1.41
Variation (%)	-3.20
ConvF:	2.14



Maximum location: X=-47.00, Y=-52.00

SAR Peak: 0.53W/kg

SAR 10g (W/Kg)	0.181883
SAR 1g (W/Kg)	0.339353



Plot 20: LTE Band66, 20MHz, Back, Middle,10mm

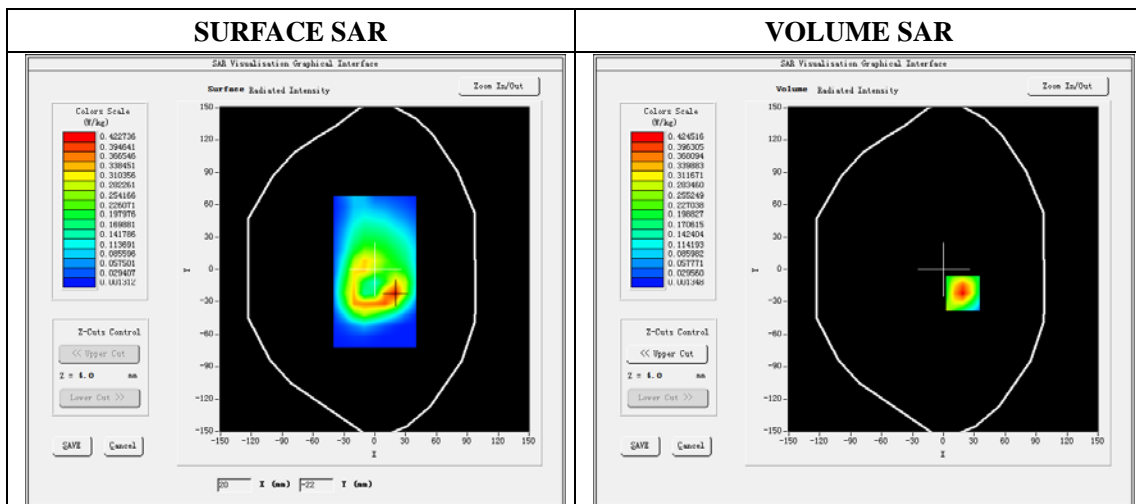
Type: Phone measurement
 Date of measurement: 12/17/2019
 Measurement duration: 22 minutes 33 seconds
 Mobile Phone IMEI number: --

A. Experimental conditions.

Area Scan	dx=8mm dy=8mm
ZoomScan	5x5x7,dx=8mm dy=8mm dz=5mm
Phantom	Validation plane
Device Position	Back
Band	LTE Band 66
Channels	132197
Signal	LTE (Duty cycle: 1:1)

B. SAR Measurement Results

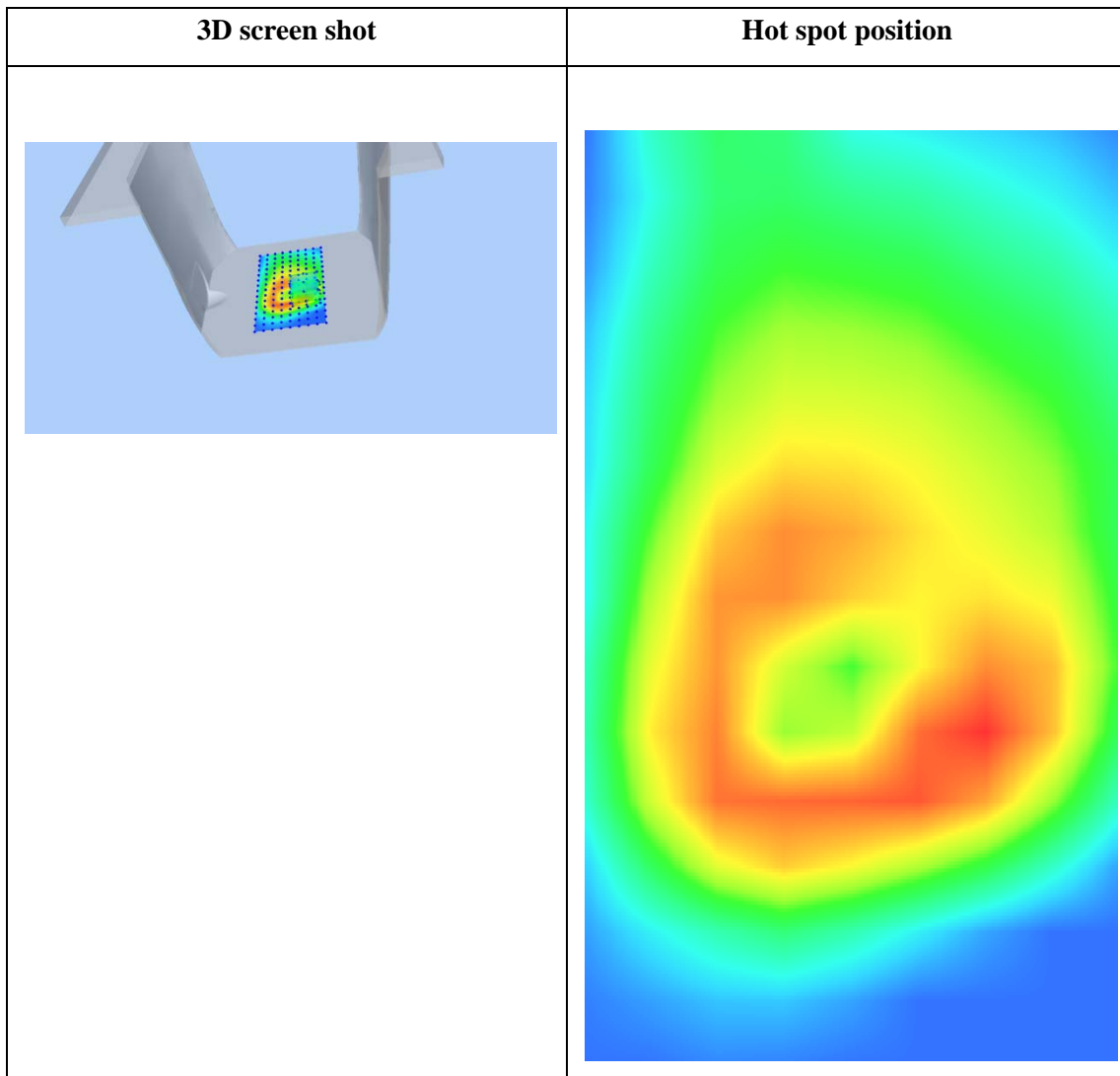
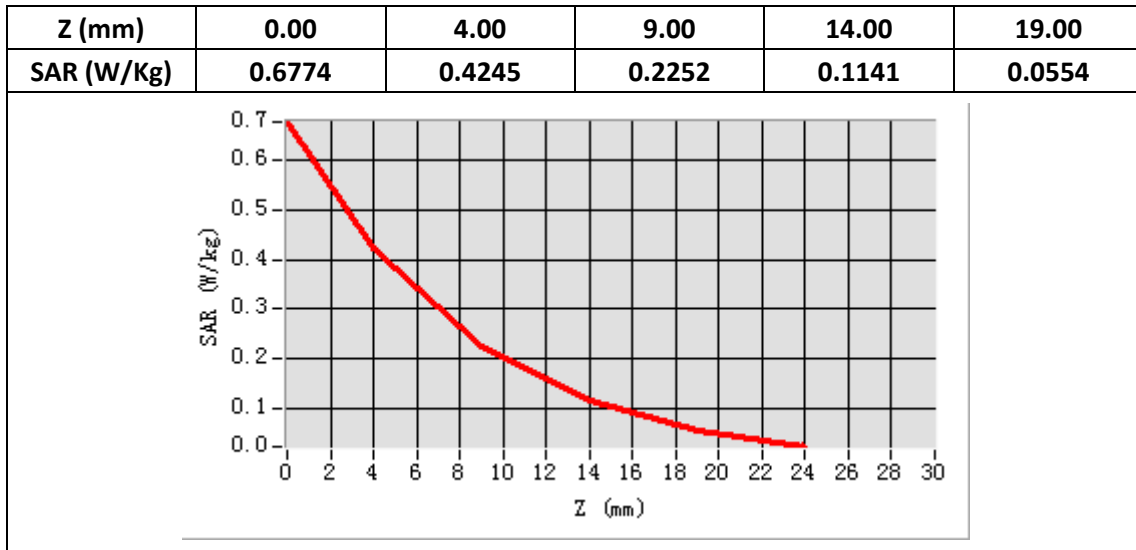
E-Field Probe	SATIMO SN_27/15_EPG0261
Frequency (MHz)	1732.5
Relative permittivity (real part)	53.50
Relative permittivity (imaginary)	15.40
Conductivity (S/m)	1.54
Variation (%)	-2.29
ConvF:	2.22



Maximum location: X=19.00, Y=-22.00

SAR Peak: 0.69W/kg

SAR 10g (W/Kg)	0.198487
SAR 1g (W/Kg)	0.393157



Plot 21: Wi-Fi 802.11b Left Cheek, Middle

Type: Phone measurement

Date of measurement: 12/19/2019

Measurement duration: 22 minutes 22 seconds

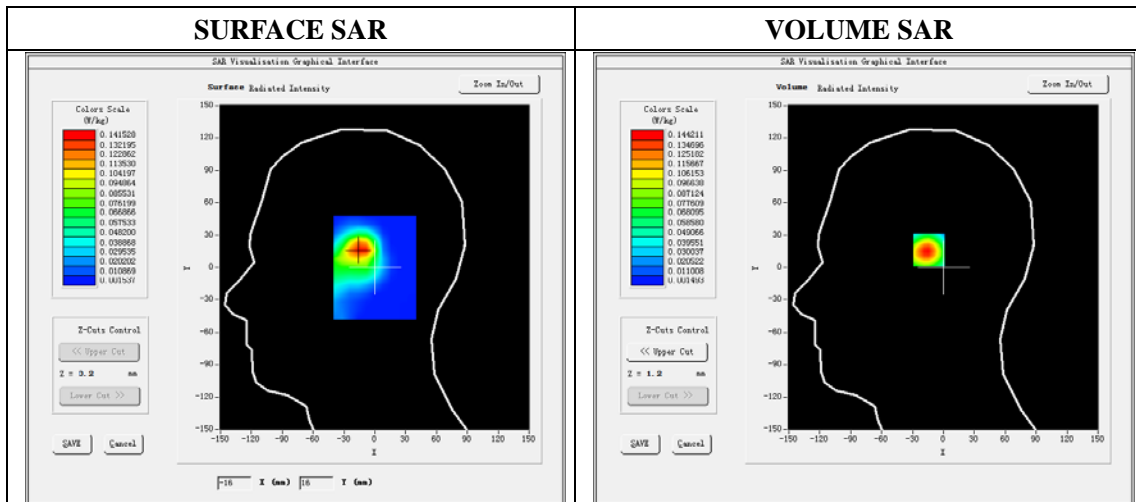
Mobile Phone IMEI number: --

A. Experimental conditions.

Area Scan	dx=5mm,dy=5mm
ZoomScan	7x7x8,dx=5mm dy=5mm dz=4mm
Phantom	Validation plane
Device Position	Right Cheek
Band	WIFI
Channels	6
Signal	DSSS (Duty cycle: 1:1)

B. SAR Measurement Results

E-Field Probe	SATIMO SN_27/15_EPG0261
Frequency (MHz)	2437
Relative permittivity (real part)	39.32
Relative permittivity (imaginary)	13.37
Conductivity (S/m)	1.82
Variation (%)	-1.95
ConvF:	2.37

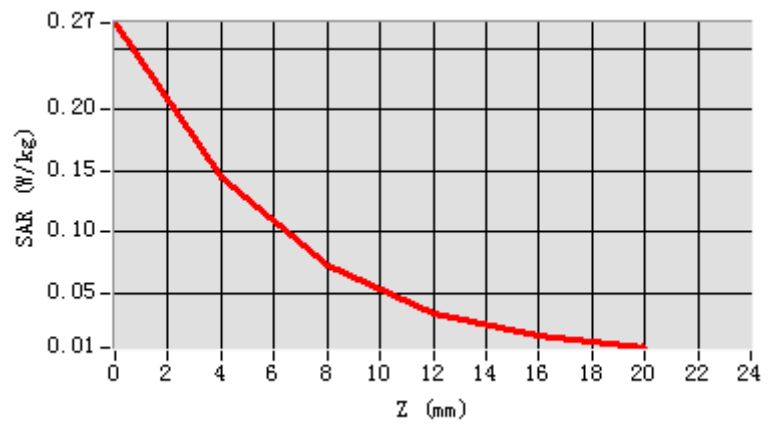


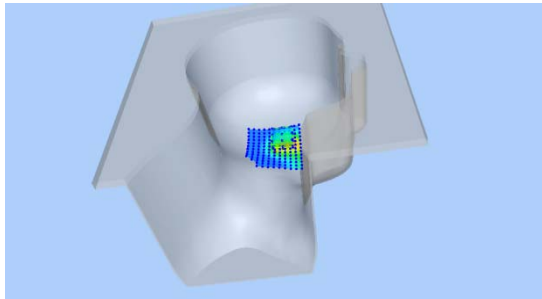
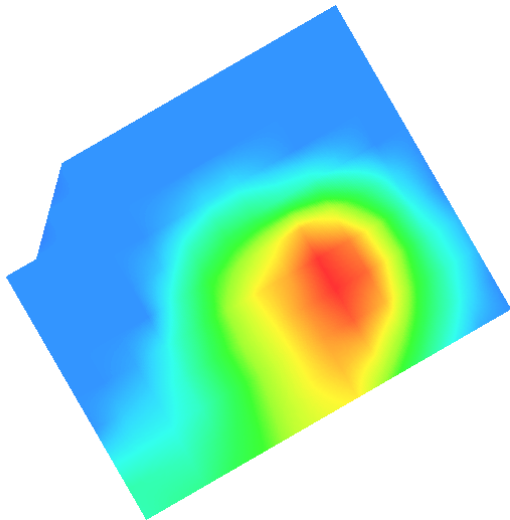
Maximum location: X=-13.00 Y=17.00

SAR Peak: 0.27 W/kg

SAR 10g (W/Kg)	0.062238
SAR 1g (W/Kg)	0.134897

Z (mm)	0.00	4.00	8.00	12.00	16.00
SAR (W/Kg)	0.2706	0.1442	0.0716	0.0333	0.0146



3D screen shot	Hot spot position
	

Plot 22: Wi-Fi 802.11b, Back,Middle, 10mm

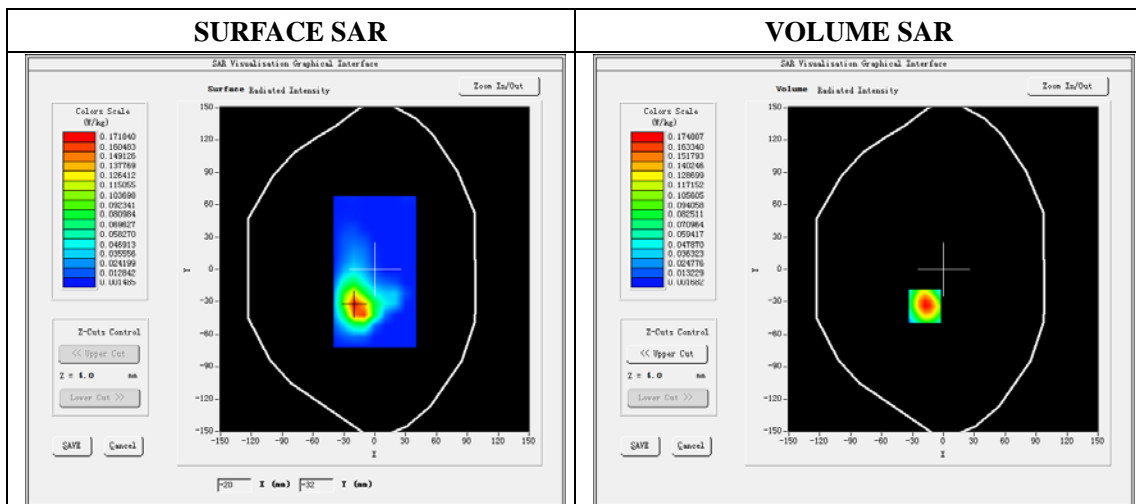
Type: Phone measurement
 Date of measurement: 12/19/2019
 Measurement duration: 22 minutes 24 seconds
 Mobile Phone IMEI number: --

A. Experimental conditions.

Area Scan	dx=5mm,dy=5mm
ZoomScan	7x7x8,dx=5mm dy=5mm dz=4mm
Phantom	Validation plane
Device Position	Back
Band	WIFI
Channels	6
Signal	DSSS (Duty cycle: 1:1)

B. SAR Measurement Results

E-Field Probe	SATIMO SN_27/15_EPG0261
Frequency (MHz)	2437
Relative permittivity (real part)	52.89
Relative permittivity (imaginary)	14.40
Conductivity (S/m)	1.96
Variation (%)	-2.49
ConvF:	2.46



Maximum location: X=-18.00 Y=-34.00

SAR Peak: 0.37W/kg

SAR 10g (W/Kg)	0.073572
SAR 1g (W/Kg)	0.169065

