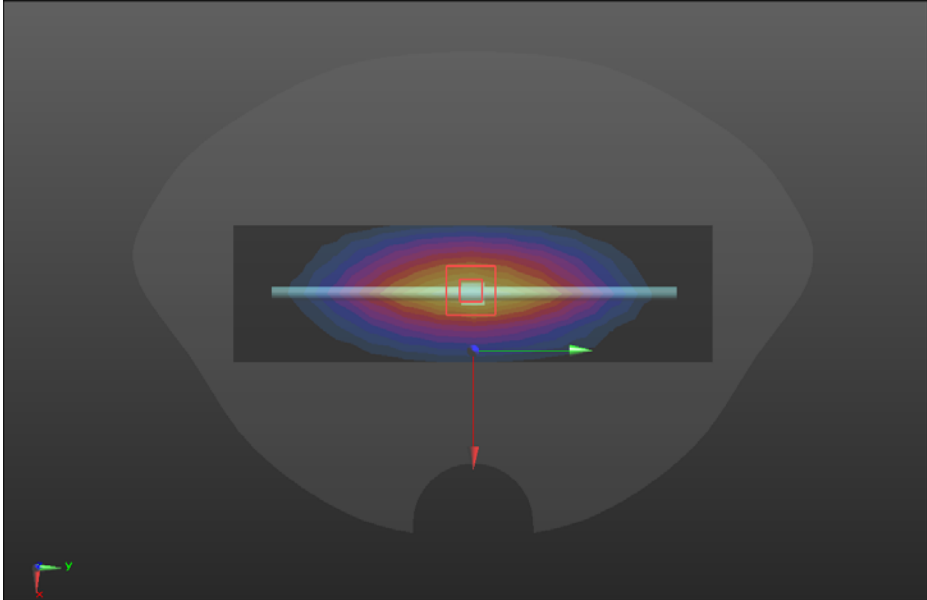
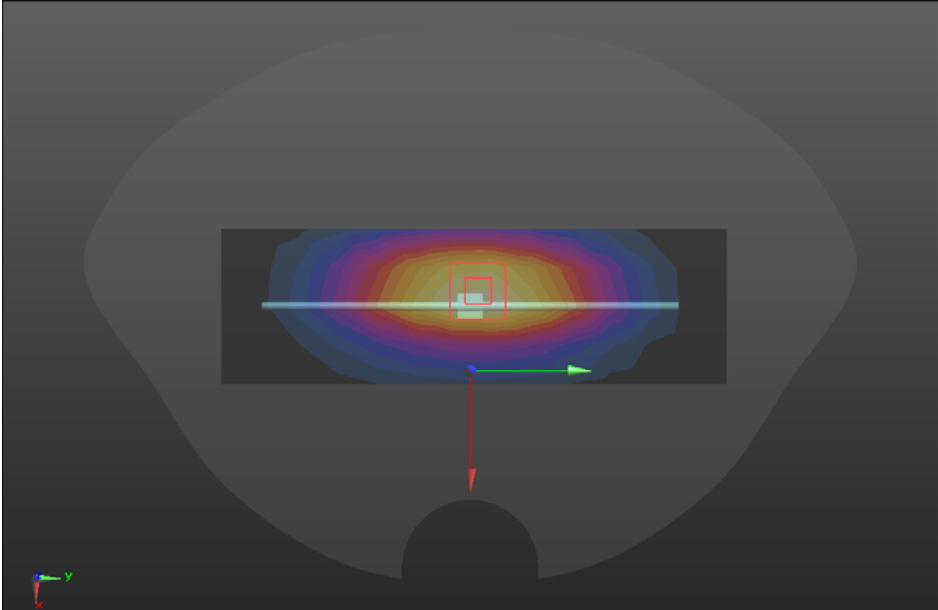


ANNEX A – TEST PLOTS

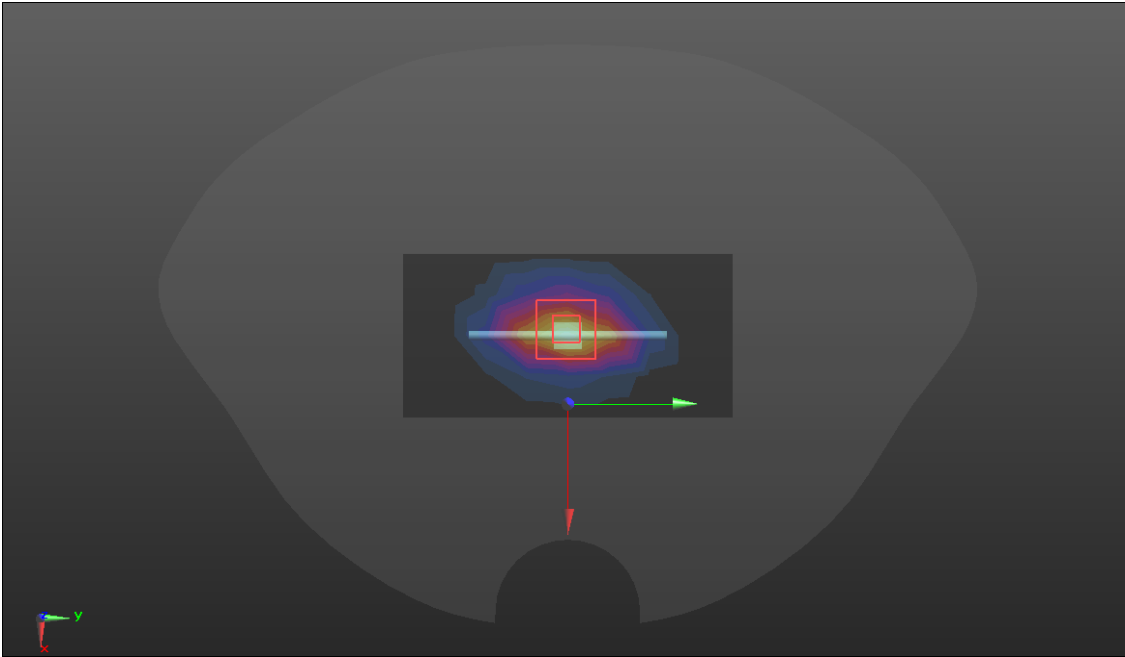
System check	750MHz(2022.01.18)
<p>Communication System: UID 0, CW (0); Frequency: 750 MHz;Duty Cycle: 1:1 Medium parameters used: $f = 750 \text{ MHz}$; $\sigma = 0.93 \text{ S/m}$; $\epsilon_r = 43.07$; $\rho = 1000 \text{ kg/m}^3$ Phantom section: Flat Section</p> <p>DASY5 Configuration:</p> <ul style="list-style-type: none"> • Probe: EX3DV4 - SN3708; ConvF(9.72, 9.72, 9.72) @ 750 MHz; Calibrated: 10/20/2021 • Sensor-Surface: 1.4mm (Mechanical Surface Detection) • Electronics: DAE4 Sn720; Calibrated: 10/8/2021 • Phantom: Twin-SAM 1559; Type: QD 000 P40 CD; Serial: xxxx • Measurement SW: DASY52, Version 52.10 (4); SEMCAD X Version 14.6.14 (7483) <p>750/Dipole 750MHz/Area Scan (5x15x1): Measurement grid: dx=15mm, dy=15mm Maximum value of SAR (measured) = 2.83 W/kg</p> <p>750/Dipole 750MHz/Zoom Scan (5x5x7)/Cube 0: Measurement grid: dx=8mm, dy=8mm, dz=5mm Reference Value = 58.50 V/m; Power Drift = 0.09 dB Peak SAR (extrapolated) = 3.24 W/kg SAR(1 g) = 2.14 W/kg; SAR(10 g) = 1.47 W/kg Maximum value of SAR (measured) = 2.85 W/kg</p> 	

SRTC performed system check by using 250mw at antenna port

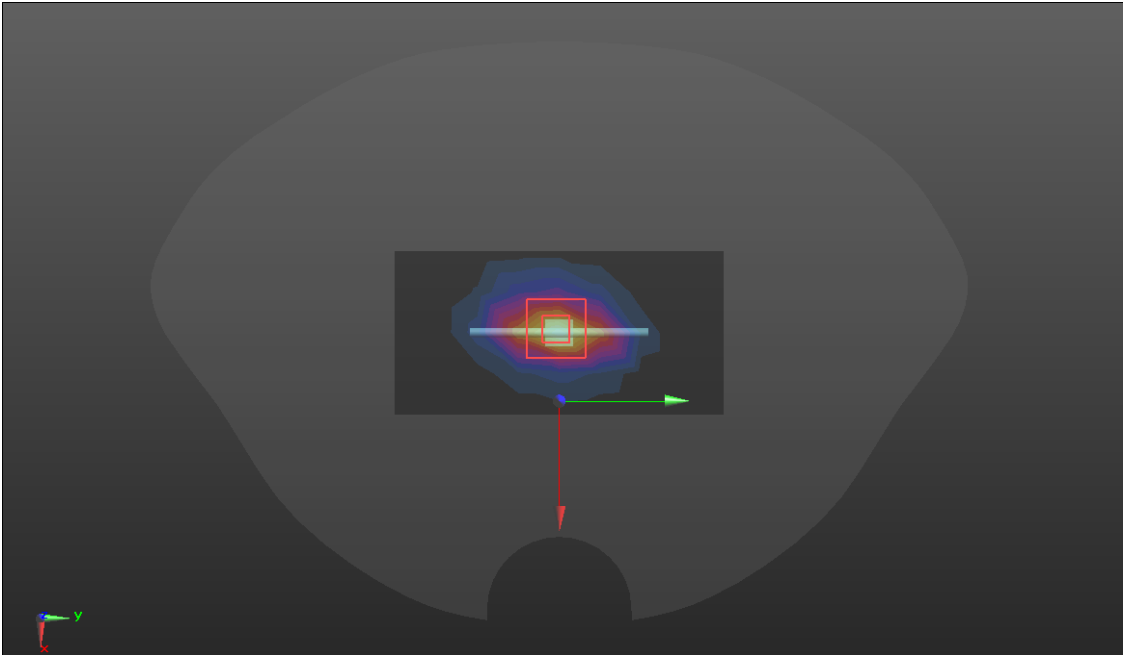
System check	835MHz(2022.01.18)
<p>Communication System: UID 0, CW (0); Frequency: 835 MHz.Duty Cycle: 1:1 Medium parameters used (interpolated): $f = 835 \text{ MHz}$; $\sigma = 0.93 \text{ S/m}$; $\epsilon_r = 42.99$; $\rho = 1000 \text{ kg/m}^3$ Phantom section: Flat Section</p> <p>DASY Configuration:</p> <ul style="list-style-type: none"> • Probe: EX3DV4 - SN3708; ConvF(9.41, 9.41, 9.41) @ 835 MHz; Calibrated: 10/20/2021 • Sensor-Surface: 1.4mm (Mechanical Surface Detection) • Electronics: DAE4 Sn720; Calibrated: 10/8/2021 • Phantom: Twin-SAM 1559; Type: QD 000 P40 CD; Serial: xxxx • Measurement SW: DASY52, Version 52.10 (4); SEMCAD X Version 14.6.14 (7483) <p>D835/Dipole 835MHz/Area Scan (5x14x1): Measurement grid: dx=15mm, dy=15mm Maximum value of SAR (measured) = 2.71 W/kg</p> <p>D835/Dipole 835MHz/Zoom Scan (5x5x7)/Cube 0: Measurement grid: dx=8mm, dy=8mm, dz=5mm Reference Value = 56.70 V/m; Power Drift = 0.05 dB Peak SAR (extrapolated) = 3.50 W/kg SAR(1 g) = 2.32 W/kg; SAR(10 g) = 1.52 W/kg Maximum value of SAR (measured) = 3.04 W/kg</p> 	

SRTC performed system check by using 250mw at antenna port

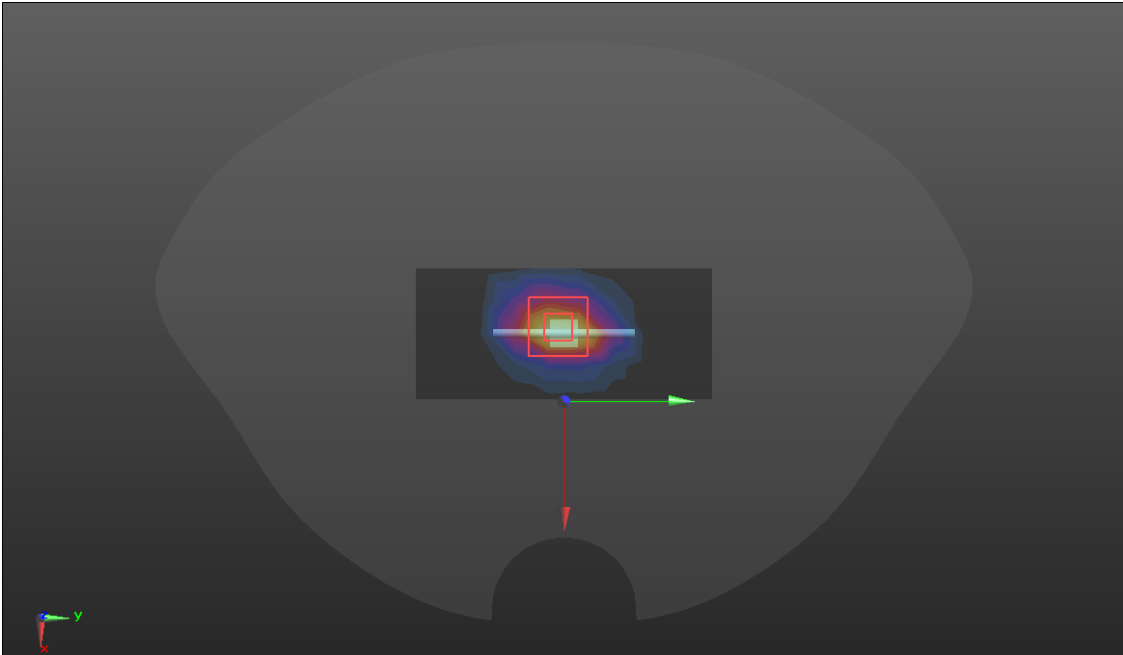
System check	900MHz(2022.01.19)
<p>Communication System: UID 0, CW (0); Frequency: 900 MHz;Duty Cycle: 1:1 Medium parameters used: $f = 900 \text{ MHz}$; $\sigma = 1.01 \text{ S/m}$; $\epsilon_r = 40.05$; $\rho = 1000 \text{ kg/m}^3$ Phantom section: Flat Section</p> <p>DASY Configuration:</p> <ul style="list-style-type: none"> Probe: EX3DV4 - SN3708; ConvF(9.41, 9.41, 9.41) @ 900 MHz; Calibrated: 10/20/2021 Sensor-Surface: 1.4mm (Mechanical Surface Detection) Electronics: DAE4 Sn720; Calibrated: 10/8/2021 Phantom: Twin-SAM 1559; Type: QD 000 P40 CD; Serial: xxxx Measurement SW: DASY52, Version 52.10 (4); SEMCAD X Version 14.6.14 (7483) <p>D900/Dipole 900MHz/Area Scan (5x13x1): Measurement grid: dx=15mm, dy=15mm Maximum value of SAR (measured) = 3.85 W/kg</p> <p>D900/Dipole 900MHz/Zoom Scan (5x5x7)/Cube 0: Measurement grid: dx=8mm, dy=8mm, dz=5mm Reference Value = 66.17 V/m; Power Drift = 0.00 dB Peak SAR (extrapolated) = 4.74 W/kg SAR(1 g) = 2.68 W/kg; SAR(10 g) = 1.83 W/kg Maximum value of SAR (measured) = 3.99 W/kg</p> 	
<p>SRTC performed system check by using 250mw at antenna port</p>	

System check	1800MHz(2022.01.20)
<p>Communication System: UID 0, CW (0); Frequency: 1800 MHz;Duty Cycle: 1:1 Medium parameters used: $f = 1800 \text{ MHz}$; $\sigma = 1.4 \text{ S/m}$; $\epsilon_r = 39.31$; $\rho = 1000 \text{ kg/m}^3$ Phantom section: Flat Section</p> <p>DASY5 Configuration:</p> <ul style="list-style-type: none"> Probe: EX3DV4 - SN3708; ConvF(8.17, 8.17, 8.17) @ 1800 MHz; Calibrated: 10/20/2021 Sensor-Surface: 1.4mm (Mechanical Surface Detection) Electronics: DAE4 Sn720; Calibrated: 10/8/2021 Phantom: Twin-SAM 1559; Type: QD 000 P40 CD; Serial: xxxx Measurement SW: DASY52, Version 52.10 (4); SEMCAD X Version 14.6.14 (7483) D1800/Dipole 1800MHz/Area Scan (5x9x1): Measurement grid: dx=15mm, dy=15mm Maximum value of SAR (measured) = 15.3 W/kg D1800/Dipole 1800MHz/Zoom Scan (5x5x7)/Cube 0: Measurement grid: dx=8mm, dy=8mm, dz=5mm Reference Value = 107.8 V/m; Power Drift = 0.05 dB Peak SAR (extrapolated) = 18.7 W/kg SAR(1 g) = 10.0 W/kg; SAR(10 g) = 5.22 W/kg Maximum value of SAR (measured) = 15.6 W/kg 	

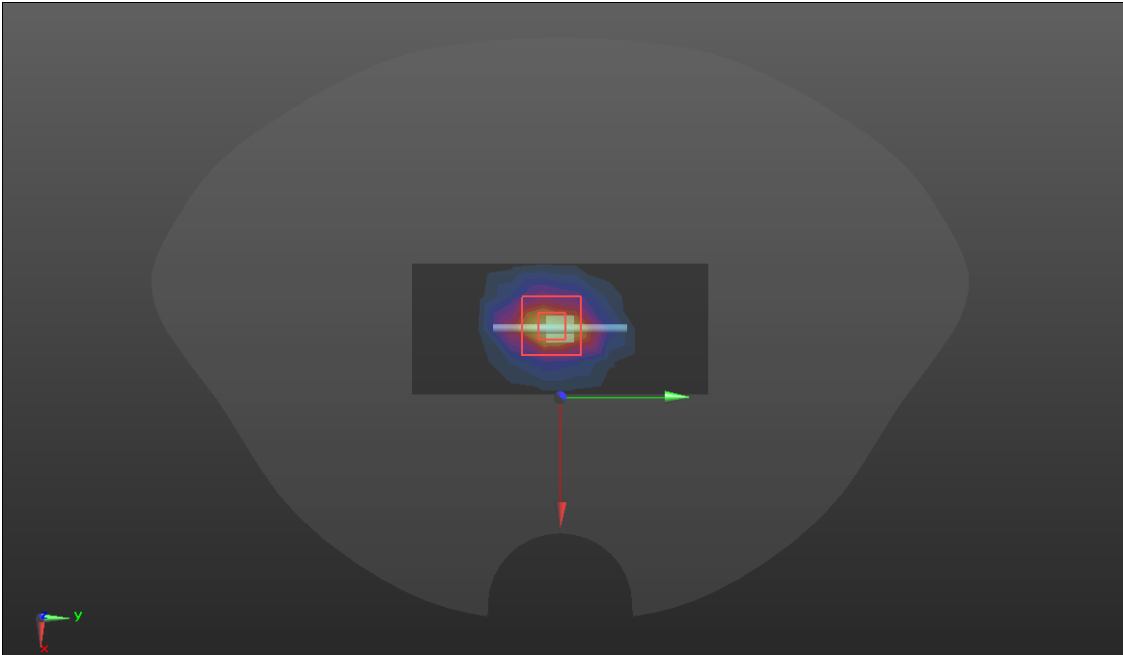
SRTC performed system check by using 250mw at antenna port

System check	2000MHz(2022.01.21)
<p>Communication System: UID 0, CW (0); Frequency: 2000 MHz;Duty Cycle: 1:1 Medium parameters used: $f = 2000 \text{ MHz}$; $\sigma = 1.47 \text{ S/m}$; $\epsilon_r = 41.31$; $\rho = 1000 \text{ kg/m}^3$ Phantom section: Flat Section</p> <p>DASY5 Configuration:</p> <ul style="list-style-type: none"> Probe: EX3DV4 - SN3708; ConvF(7.87, 7.87, 7.87) @ 2000 MHz; Calibrated: 10/20/2021 Sensor-Surface: 1.4mm (Mechanical Surface Detection) Electronics: DAE4 Sn720; Calibrated: 10/8/2021 Phantom: Twin-SAM 1559; Type: QD 000 P40 CD; Serial: xxxx Measurement SW: DASY52, Version 52.10 (4); SEMCAD X Version 14.6.14 (7483) <p>D2000/Dipole 2000MHz/Area Scan (5x9x1): Measurement grid: dx=15mm, dy=15mm Maximum value of SAR (measured) = 15.2 W/kg</p> <p>D2000/Dipole 2000MHz/Zoom Scan (5x5x7)/Cube 0: Measurement grid: dx=8mm, dy=8mm, dz=5mm Reference Value = 107.6 V/m; Power Drift = 0.04 dB Peak SAR (extrapolated) = 18.9 W/kg SAR(1 g) = 10.64 W/kg; SAR(10 g) = 4.99 W/kg Maximum value of SAR (measured) = 15.5 W/kg</p> 	

SRTC performed system check by using 250mw at antenna por

System check	2450MHz(2022.01.22)
<p>Communication System: UID 0, CW (0); Frequency: 2450 MHz;Duty Cycle: 1:1 Medium parameters used: $f = 2450 \text{ MHz}$; $\sigma = 1.8 \text{ S/m}$; $\epsilon_r = 39.2$; $\rho = 1000 \text{ kg/m}^3$ Phantom section: Flat Section</p> <p>DASY5 Configuration:</p> <ul style="list-style-type: none"> Probe: EX3DV4 - SN3708; ConvF(7.45, 7.45, 7.45) @ 2450 MHz; Calibrated: 10/20/2021 Sensor-Surface: 1.4mm (Mechanical Surface Detection) Electronics: DAE4 Sn720; Calibrated: 10/8/2021 Phantom: Twin-SAM 1559; Type: QD 000 P40 CD; Serial: xxxx Measurement SW: DASY52, Version 52.10 (4); SEMCAD X Version 14.6.14 (7483) D2450/Dipole 2450MHz/Area Scan (5x10x1): Measurement grid: dx=12mm, dy=12mm Maximum value of SAR (measured) = 18.1 W/kg D2450/Dipole 2450MHz/Zoom Scan (5x5x7)/Cube 0: Measurement grid: dx=8mm, dy=8mm, dz=5mm Reference Value = 107.6 V/m; Power Drift = 0.06 dB Peak SAR (extrapolated) = 25.1 W/kg SAR(1 g) = 12.69 W/kg; SAR(10 g) = 6.36 W/kg Maximum value of SAR (measured) = 20.3 W/kg 	

SRTC performed system check by using 250mw at antenna port

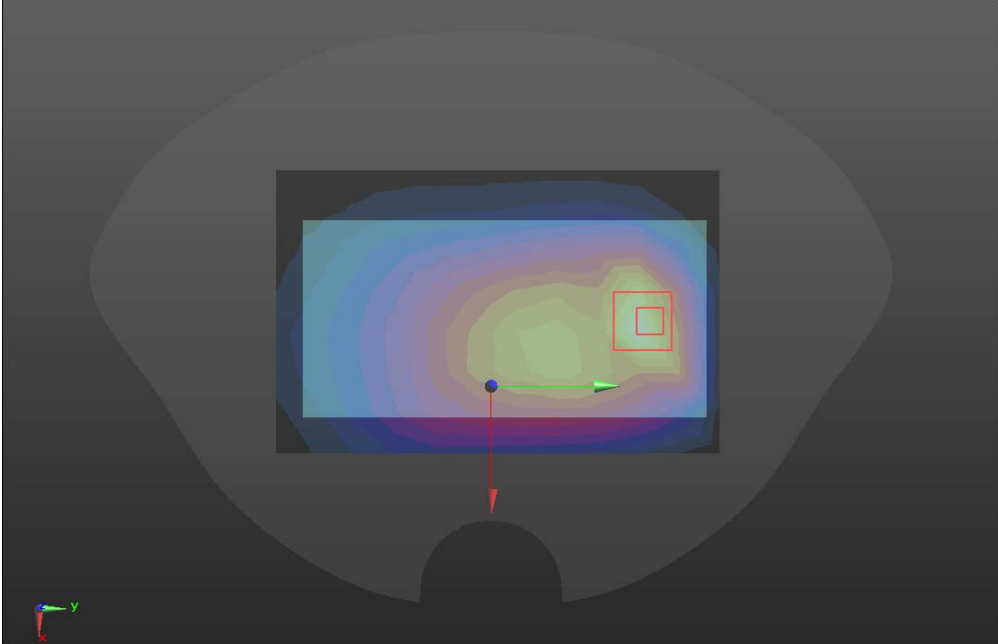
System check	2600MHz(2022.01.23)
<p>Communication System: UID 0, CW (0); Frequency: 2600 MHz;Duty Cycle: 1:1 Medium parameters used: $f = 2600$ MHz; $\sigma = 1.74$ S/m; $\epsilon_r = 40.83$; $\rho = 1000$ kg/m³ Phantom section: Flat Section</p> <p>DASY5 Configuration:</p> <ul style="list-style-type: none"> Probe: EX3DV4 - SN3708; ConvF(7.38, 7.38, 7.38) @ 2600 MHz; Calibrated: 10/20/2021 Sensor-Surface: 1.4mm (Mechanical Surface Detection) Electronics: DAE4 Sn720; Calibrated: 10/8/2021 Phantom: Twin-SAM 1559; Type: QD 000 P40 CD; Serial: xxxx Measurement SW: DASY52, Version 52.10 (4); SEMCAD X Version 14.6.14 (7483) D2600/Dipole 2600MHz/Area Scan (5x10x1): Measurement grid: dx=12mm, dy=12mm Maximum value of SAR (measured) = 21.0 W/kg D2600/Dipole 2600MHz/Zoom Scan (5x5x7)/Cube 0: Measurement grid: dx=8mm, dy=8mm, dz=5mm Reference Value = 107.0 V/m; Power Drift = 0.00 dB Peak SAR (extrapolated) = 27.8 W/kg SAR(1 g) = 14.02 W/kg; SAR(10 g) = 6.53 W/kg Maximum value of SAR (measured) = 21.7 W/kg 	

SRTC performed system check by using 250mw at antenna port

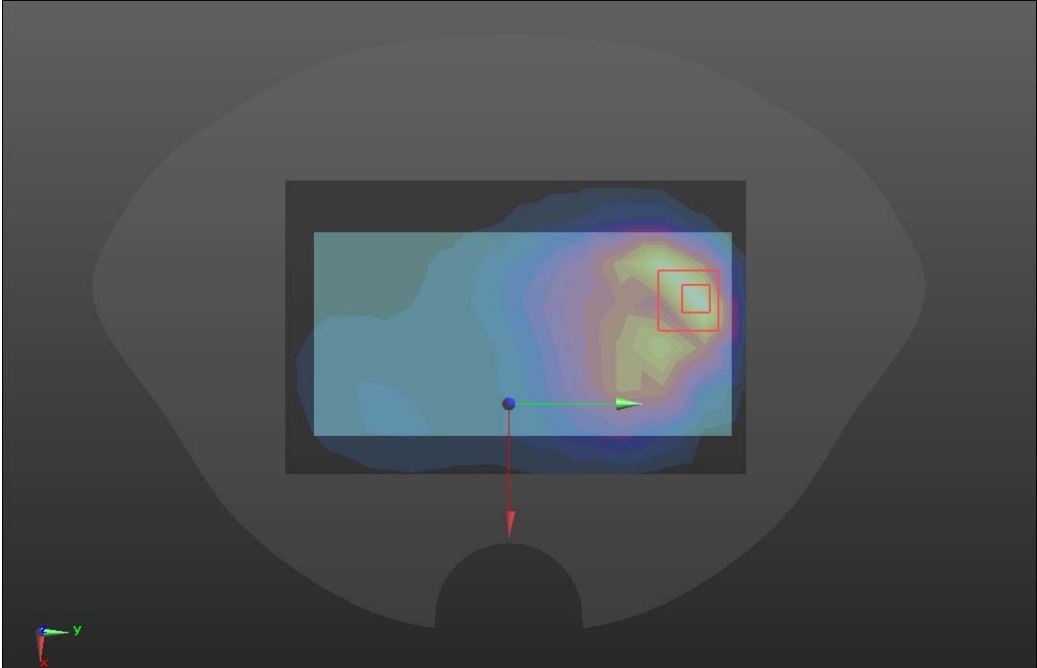
GSM 850

Body-worn	Back(2022.01.18)
<p>Communication System: UID 0, Generic GSM (0); Frequency: 836.6 MHz;Duty Cycle: 2:8 Medium parameters used (interpolated): f = 836.6 MHz; $\sigma = 0.905$ S/m; $\epsilon_r = 41.528$; $\rho = 1000$ kg/m³ Phantom section: Flat Section</p> <p>DASY5 Configuration:</p> <ul style="list-style-type: none"> Probe: EX3DV4 - SN3708; ConvF(9.41, 9.41, 9.41) @ 836.6 MHz; Calibrated: 10/20/2021 Sensor-Surface: 1.4mm (Mechanical Surface Detection) Electronics: DAE4 Sn720; Calibrated: 10/8/2021 Phantom: Twin-SAM 1559; Type: QD 000 P40 CD; Serial: xxxx Measurement SW: DASY52, Version 52.10 (4); SEMCAD X Version 14.6.14 (7483) <p>BACK/GSM850/Area Scan (8x12x1): Measurement grid: dx=15mm, dy=15mm Maximum value of SAR (measured) = 0.538 W/kg</p> <p>BACK/GSM850/Zoom Scan (5x5x5)/Cube 0: Measurement grid: dx=8mm, dy=8mm, dz=5mm Reference Value = 20.48 V/m; Power Drift = 0.03 dB Peak SAR (extrapolated) = 0.716 W/kg SAR(1 g) = 0.393 W/kg; SAR(10 g) = 0.223 W/kg Maximum value of SAR (measured) = 0.567 W/kg</p>  <p>The image displays a SAR measurement visualization. It features a large, dark grey silhouette of a human head phantom. Inside this, there is a smaller, rectangular area scan visualization showing a color gradient from blue (low SAR) to red (high SAR). A red square highlights a specific region within this area scan, which is further magnified in a 'Zoom Scan' view. A green arrow points from the center of the zoomed scan to the right. A red arrow points from the center of the zoomed scan down to a small 3D coordinate system (x, y, z) at the bottom left of the image.</p>	

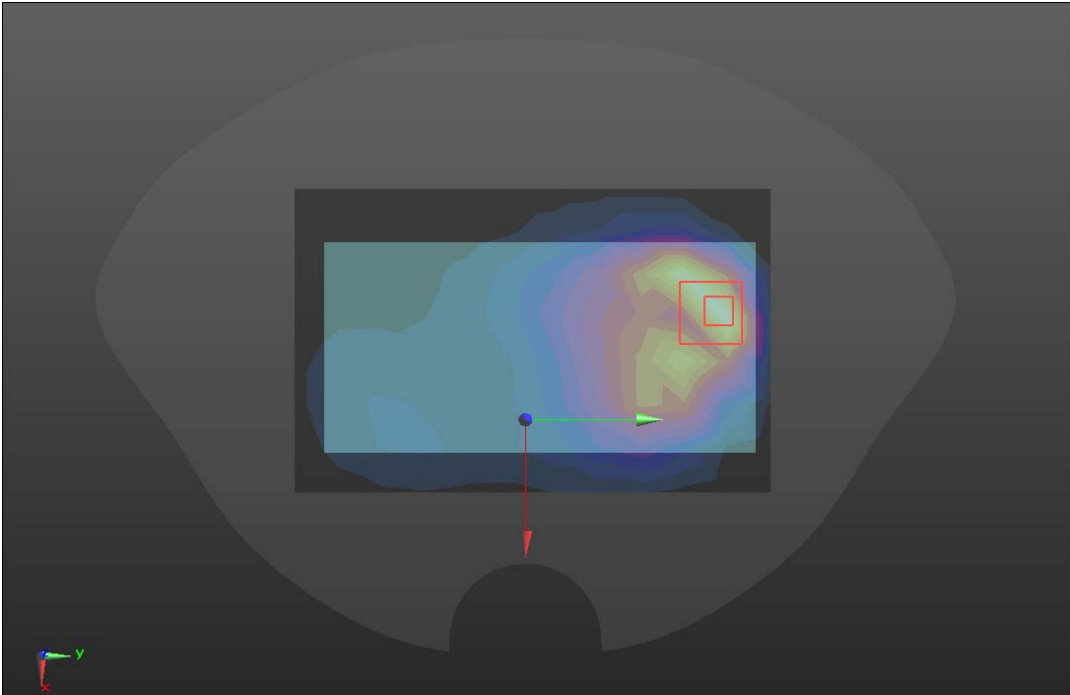
GSM 1900

Body-worn	Back(2022.01.20)
<p>Communication System: UID 0, Generic GSM (0); Frequency: 1880 MHz;Duty Cycle: 2:8 Medium parameters used (interpolated): $f = 1880$ MHz; $\sigma = 1.4$ S/m; $\epsilon_r = 40$; $\rho = 1000$ kg/m³ Phantom section: Flat Section</p> <p>DASY5 Configuration:</p> <ul style="list-style-type: none"> Probe: EX3DV4 - SN3708; ConvF(8.02, 8.02, 8.02) @ 1880 MHz ; Calibrated: 10/20/2021 Sensor-Surface: 1.4mm (Mechanical Surface Detection) Electronics: DAE4 Sn720; Calibrated: 10/8/2021 Phantom: Twin-SAM 1559; Type: QD 000 P40 CD; Serial: xxxx Measurement SW: DASY52, Version 52.10 (4); SEMCAD X Version 14.6.14 (7483) <p>BACK/GSM1900/Area Scan (8x12x1): Measurement grid: dx=15mm, dy=15mm Maximum value of SAR (measured) = 0.538 W/kg</p> <p>BACK/GSM1900/Zoom Scan (5x5x5)/Cube 0: Measurement grid: dx=8mm, dy=8mm, dz=5mm Reference Value = 23.44 V/m; Power Drift = 0.11 dB Peak SAR (extrapolated) = 2.28 W/kg SAR(1 g) = 0.595 W/kg; SAR(10 g) = 0.135 W/kg Maximum value of SAR (measured) = 0.61 W/kg</p> 	

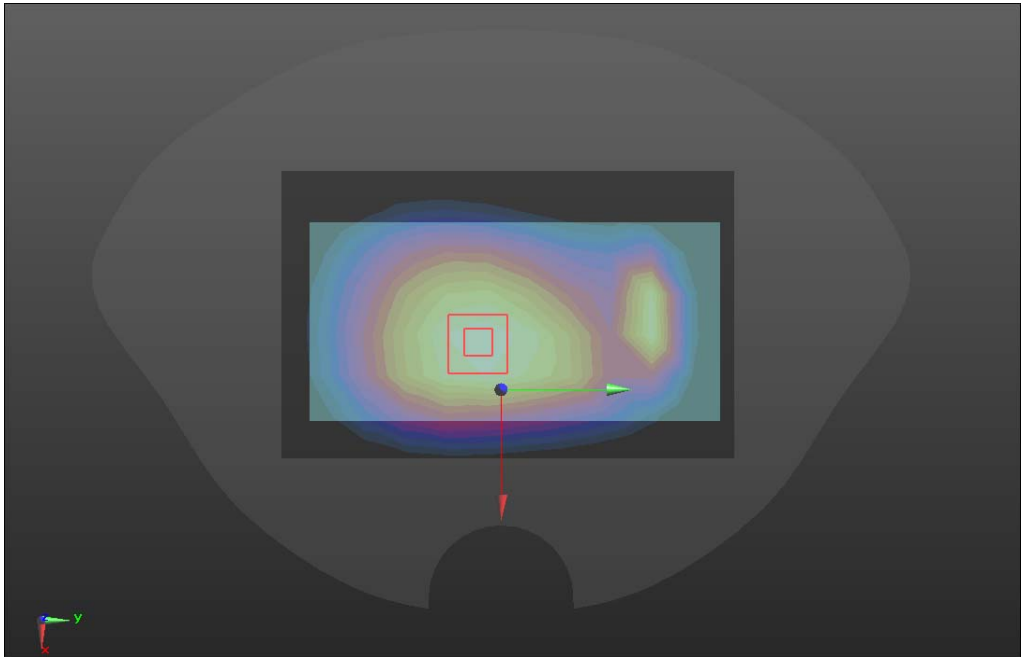
WCDMA BAND II

Body-worn	Back(2022.01.20)
<p>Communication System: UID 0, wcdma BANDII (0); Frequency: 1880 MHz;Duty Cycle: 1:1 Medium parameters used (interpolated): $f = 1880$ MHz; $\sigma = 1.4$ S/m; $\epsilon_r = 40$; $\rho = 1000$ kg/m³ Phantom section: Flat Section</p> <p>DASY5 Configuration:</p> <ul style="list-style-type: none"> Probe: EX3DV4 - SN3708; ConvF(8.02, 8.02, 8.02) @ 1880 MHz; Calibrated: 10/20/2021 Sensor-Surface: 1.4mm (Mechanical Surface Detection) Electronics: DAE4 Sn720; Calibrated: 10/8/2021 Phantom: Twin-SAM 1559; Type: QD 000 P40 CD; Serial: xxxx Measurement SW: DASY52, Version 52.10 (4); SEMCAD X Version 14.6.14 (7483) <p>BACK/W2/Area Scan (8x12x1): Measurement grid: dx=15mm, dy=15mm Maximum value of SAR (measured) = 0.650 W/kg</p> <p>BACK/W2/Zoom Scan (5x5x5)/Cube 0: Measurement grid: dx=8mm, dy=8mm, dz=5mm Reference Value = 27.25 V/m; Power Drift = 0.08 dB Peak SAR (extrapolated) = 3.944 W/kg SAR(1 g) = 0.93 W/kg; SAR(10 g) = 0.461 W/kg Maximum value of SAR (measured) = 1.790 W/kg</p> 	

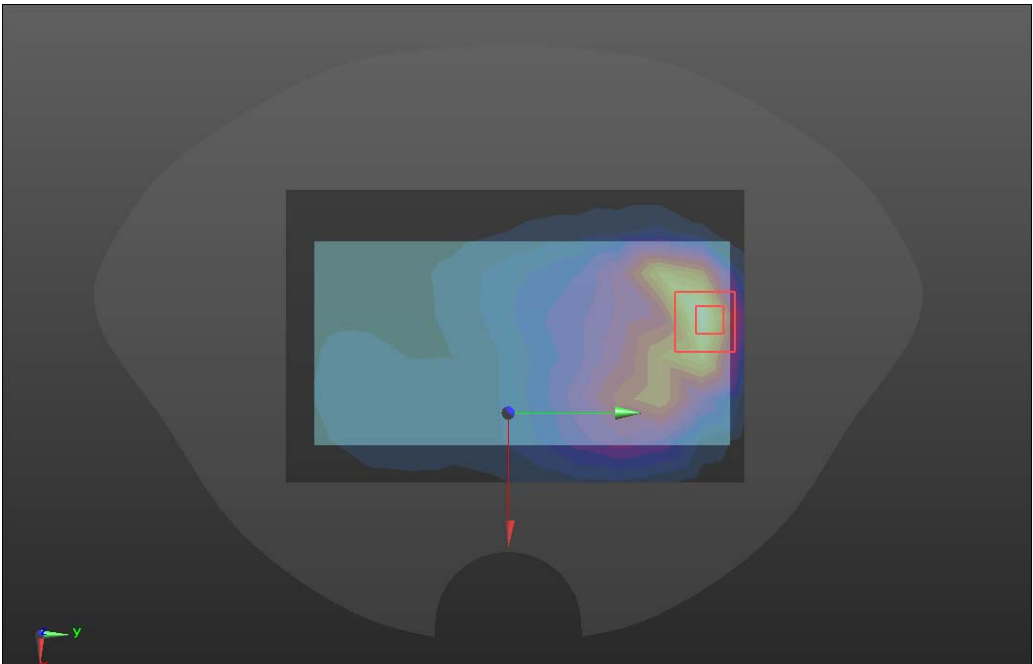
WCDMA BAND IV

Body-worn	Back(2022.01.20)
<p>Communication System: UID 0, wcdma bandIV (0); Frequency: 1732.4 MHz;Duty Cycle: 1:1 Medium parameters used (interpolated): $f = 1732.4$ MHz; $\sigma = 1.375$ S/m; $\epsilon_r = 40.07$; $\rho = 1000$ kg/m³ Phantom section: Flat Section</p> <p>DASY5 Configuration:</p> <ul style="list-style-type: none"> • Probe: EX3DV4 - SN3708; ConvF(8.17, 8.17, 8.17) @ 1732.4 MHz; Calibrated: 10/20/2021 • Sensor-Surface: 1.4mm (Mechanical Surface Detection) • Electronics: DAE4 Sn720; Calibrated: 10/8/2021 • Phantom: Twin-SAM 1559; Type: QD 000 P40 CD; Serial: xxxx • Measurement SW: DASY52, Version 52.10 (4); SEMCAD X Version 14.6.14 (7483) <p>BACK/W4/Area Scan (8x12x1): Measurement grid: dx=15mm, dy=15mm Maximum value of SAR (measured) = 0.746 W/kg</p> <p>BACK/W4/Zoom Scan (5x5x5)/Cube 0: Measurement grid: dx=8mm, dy=8mm, dz=5mm Reference Value = 10.36 V/m; Power Drift = -0.03 dB Peak SAR (extrapolated) = 0.960 W/kg SAR(1 g) = 0.565 W/kg; SAR(10 g) = 0.281 W/kg Maximum value of SAR (measured) = 0.786 W/kg</p> 	

WCDMA BAND V

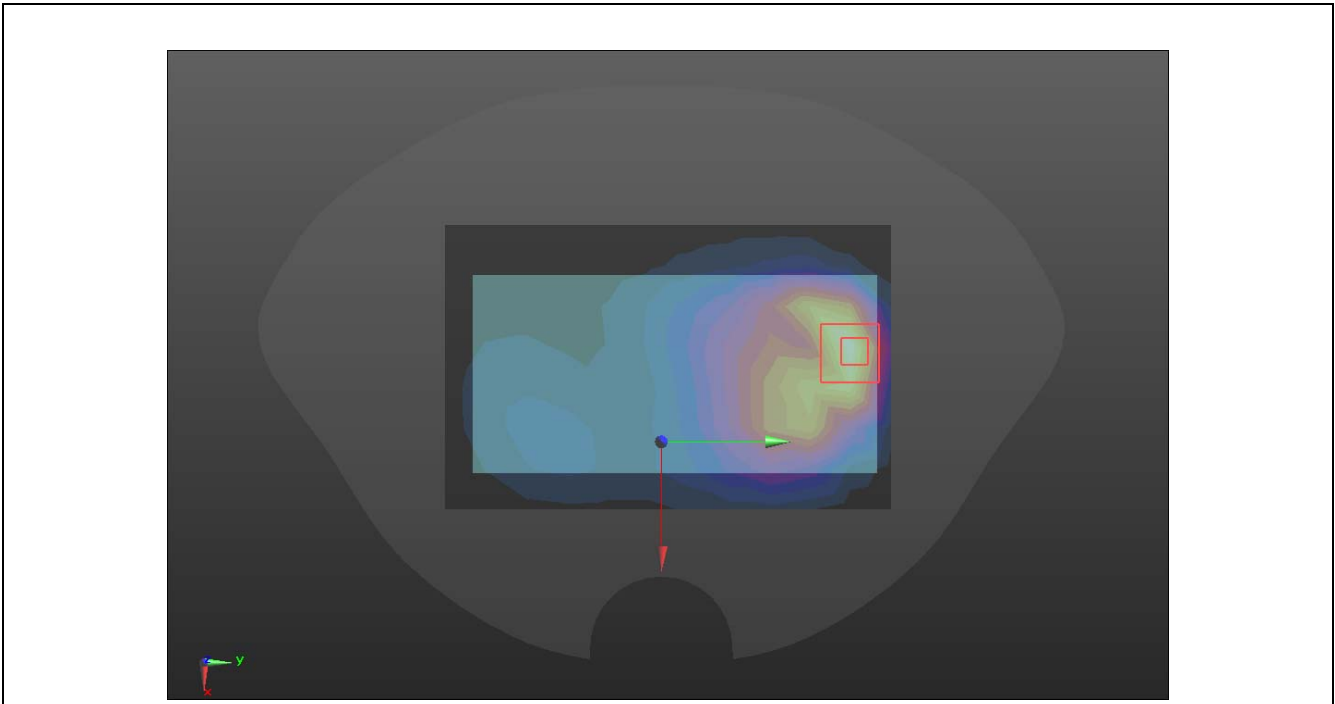
Body-worn	Back(2022.01.18)
<p>Communication System: UID 0, WCDMA 5 (0); Frequency: 836.6 MHz;Duty Cycle: 1:1 Medium parameters used (interpolated): f = 836.6 MHz; $\sigma = 0.905$ S/m; $\epsilon_r = 41.528$; $\rho = 1000$ kg/m³ Phantom section: Flat Section</p> <p>DASY5 Configuration:</p> <ul style="list-style-type: none"> Probe: EX3DV4 - SN3708; ConvF(9.41, 9.41, 9.41) @ 836.6 MHz; Calibrated: 10/20/2021 Sensor-Surface: 1.4mm (Mechanical Surface Detection) Electronics: DAE4 Sn720; Calibrated: 10/8/2021 Phantom: Twin-SAM 1559; Type: QD 000 P40 CD; Serial: xxxx Measurement SW: DASY52, Version 52.10 (4); SEMCAD X Version 14.6.14 (7483) <p>BACK/W5/Area Scan (8x12x1): Measurement grid: dx=15mm, dy=15mm Maximum value of SAR (measured) = 0.352 W/kg</p> <p>BACK/W5/Zoom Scan (5x5x5)/Cube 0: Measurement grid: dx=8mm, dy=8mm, dz=5mm Reference Value = 20.07 V/m; Power Drift = -0.04 dB Peak SAR (extrapolated) = 0.395 W/kg SAR(1 g) = 0.289 W/kg; SAR(10 g) = 0.216 W/kg Maximum value of SAR (measured) = 0.355 W/kg</p> 	

LTE BAND 2

Body-worn	Back(2022.01.20)
<p>Communication System: UID 0, LTE BAND02 (0); Frequency: 1880 MHz;Duty Cycle: 1:1 Medium parameters used (interpolated): f = 1880 MHz; $\sigma = 1.4$ S/m; $\epsilon_r = 40$; $\rho = 1000$ kg/m³ Phantom section: Flat Section</p> <p>DASY5 Configuration:</p> <ul style="list-style-type: none"> Probe: EX3DV4 - SN3708; ConvF(8.02, 8.02, 8.02) @ 1880 MHz; Calibrated: 10/20/2021 Sensor-Surface: 1.4mm (Mechanical Surface Detection) Electronics: DAE4 Sn720; Calibrated: 10/8/2021 Phantom: Twin-SAM 1559; Type: QD 000 P40 CD; Serial: xxxx Measurement SW: DASY52, Version 52.10 (4); SEMCAD X Version 14.6.14 (7483) <p>BACK/LTE B2/Area Scan (8x12x1): Measurement grid: dx=15mm, dy=15mm Maximum value of SAR (measured) = 1.31 W/kg</p> <p>BACK/LTE B2/Zoom Scan (5x5x5)/Cube 0: Measurement grid: dx=8mm, dy=8mm, dz=5mm</p> <p>Reference Value = 12.90 V/m; Power Drift = -0.02 dB Peak SAR (extrapolated) = 1.60 W/kg SAR(1 g) = 0.894 W/kg; SAR(10 g) = 0.466 W/kg Maximum value of SAR (measured) = 1.27 W/kg</p> 	

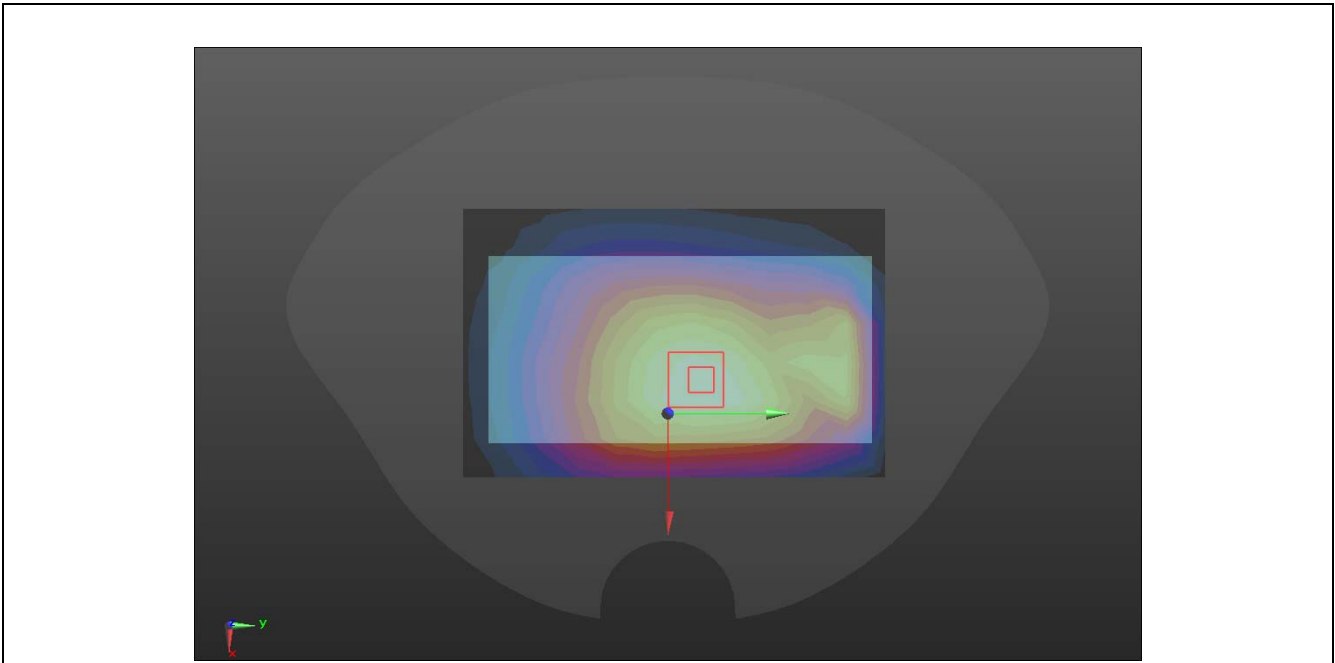
LTE BAND 4

Body-worn	Back(2022.01.20)
<p>Communication System: UID 0, LTE BAND4 (0); Frequency: 1745 MHz;Duty Cycle: 1:1 Medium parameters used (interpolated): $f = 1745$ MHz; $\sigma = 1.383$ S/m; $\epsilon_r = 40.047$; $\rho = 1000$ kg/m³ Phantom section: Flat Section</p> <p>DASY5 Configuration:</p> <ul style="list-style-type: none"> Probe: EX3DV4 - SN3708; ConvF(8.17, 8.17, 8.17) @ 1745 MHz; Calibrated: 10/20/2021 Sensor-Surface: 1.4mm (Mechanical Surface Detection) Electronics: DAE4 Sn720; Calibrated: 10/8/2021 Phantom: Twin-SAM 1559; Type: QD 000 P40 CD; Serial: xxxx Measurement SW: DASY52, Version 52.10 (4); SEMCAD X Version 14.6.14 (7483) <p>BACK/LTEB4/Area Scan (8x12x1): Measurement grid: dx=15mm, dy=15mm Maximum value of SAR (measured) = 0.840 W/kg</p> <p>BACK/LTEB4/Zoom Scan (5x5x5)/Cube 0: Measurement grid: dx=8mm, dy=8mm, dz=5mm Reference Value = 10.22 V/m; Power Drift = -0.08 dB Peak SAR (extrapolated) = 1.03 W/kg SAR(1 g) = 0.615 W/kg; SAR(10 g) = 0.315 W/kg Maximum value of SAR (measured) = 0.830 W/kg</p>	



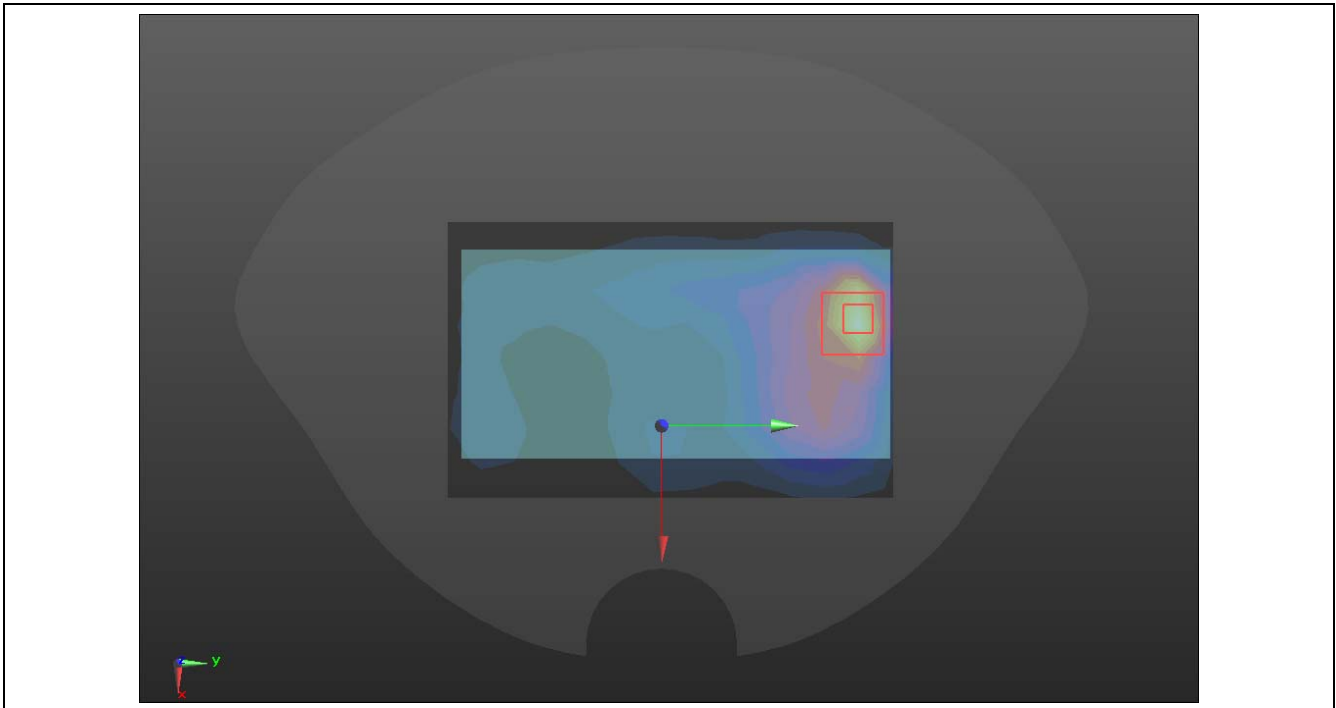
LTE BAND 5

Body-worn	Back(2022.01.18)
Communication System: UID 0, LTE BAND05 (0); Frequency: 836.5 MHz;Duty Cycle: 1:1 Medium parameters used (interpolated): f = 836.5 MHz; $\sigma = 0.905$ S/m; $\epsilon_r = 41.528$; $\rho = 1000$ kg/m ³ Phantom section: Flat Section	
DASY5 Configuration: <ul style="list-style-type: none"> • Probe: EX3DV4 - SN3708; ConvF(9.41, 9.41, 9.41) @ 836.5 MHz; Calibrated: 10/20/2021 • Sensor-Surface: 1.4mm (Mechanical Surface Detection) • Electronics: DAE4 Sn720; Calibrated: 10/8/2021 • Phantom: Twin-SAM 1559; Type: QD 000 P40 CD; Serial: xxxx • Measurement SW: DASY52, Version 52.10 (4); SEMCAD X Version 14.6.14 (7483) <p>BACK/LTEB5/Area Scan (8x12x1): Measurement grid: dx=15mm, dy=15mm Maximum value of SAR (measured) = 0.332 W/kg</p> <p>BACK/LTEB5/Zoom Scan (5x5x5)/Cube 0: Measurement grid: dx=8mm, dy=8mm, dz=5mm Reference Value = 19.34 V/m; Power Drift = -0.21 dB Peak SAR (extrapolated) = 0.374 W/kg SAR(1 g) = 0.294 W/kg; SAR(10 g) = 0.207 W/kg Maximum value of SAR (measured) = 0.338 W/kg</p>	



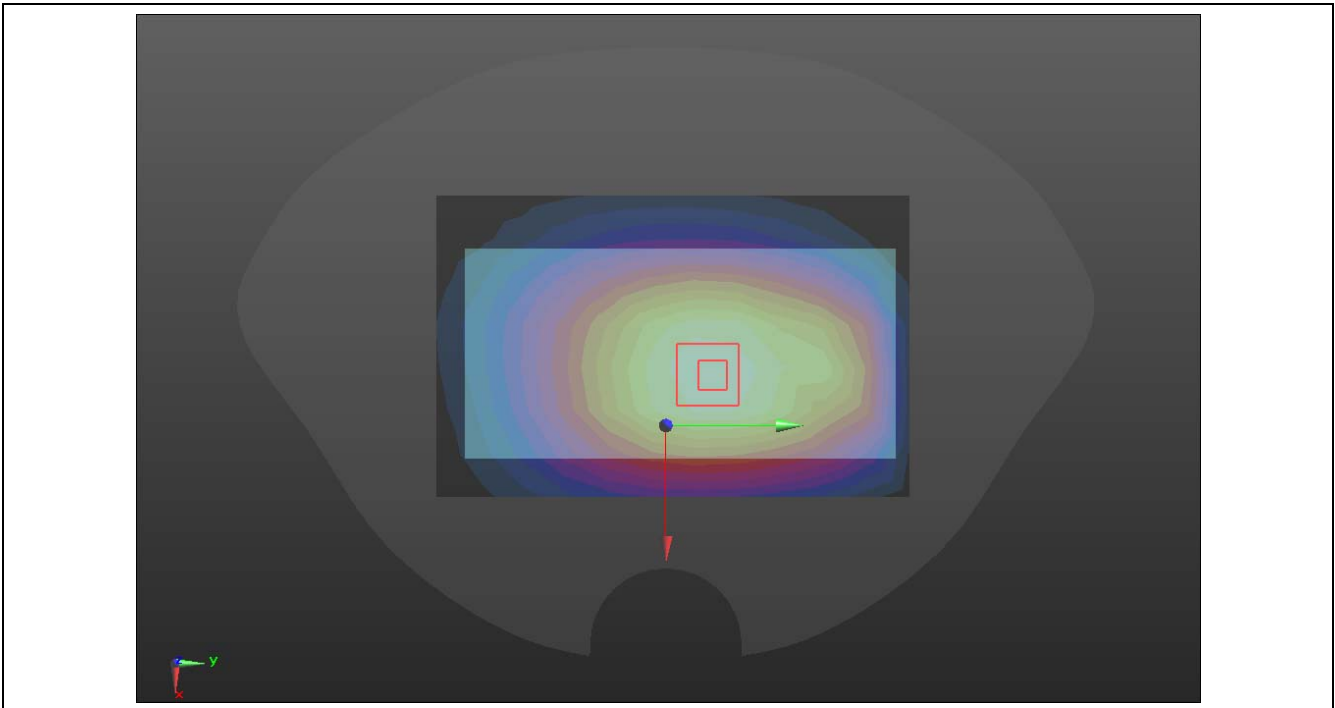
LTE BAND 7

Body-worn	Back(2022.01.23)
<p>Communication System: UID 0, LTE BAND07 (0); Frequency: 2535 MHz;Duty Cycle: 1:1 Medium parameters used (interpolated): f = 2535 MHz; $\sigma = 1.888$ S/m; $\epsilon_r = 39.084$; $\rho = 1000$ kg/m³ Phantom section: Flat Section</p> <p>DASY5 Configuration:</p> <ul style="list-style-type: none"> Probe: EX3DV4 - SN3708; ConvF(7.38, 7.38, 7.38) @ 2535 MHz; Calibrated: 10/20/2021 Sensor-Surface: 1.4mm (Mechanical Surface Detection) Electronics: DAE4 Sn720; Calibrated: 10/8/2021 Phantom: Twin-SAM 1559; Type: QD 000 P40 CD; Serial: xxxx Measurement SW: DASY52, Version 52.10 (4); SEMCAD X Version 14.6.14 (7483) <p>BACK/LTE B7/Area Scan (9x14x1): Measurement grid: dx=12mm, dy=12mm Maximum value of SAR (measured) = 0.844 W/kg</p> <p>BACK/LTE B7/Zoom Scan (5x5x5)/Cube 0: Measurement grid: dx=8mm, dy=8mm, dz=5mm Reference Value = 7.179 V/m; Power Drift = -0.13 dB Peak SAR (extrapolated) = 1.10 W/kg SAR(1 g) = 0.528 W/kg; SAR(10 g) = 0.252 W/kg Maximum value of SAR (measured) = 0.878 W/kg</p>	



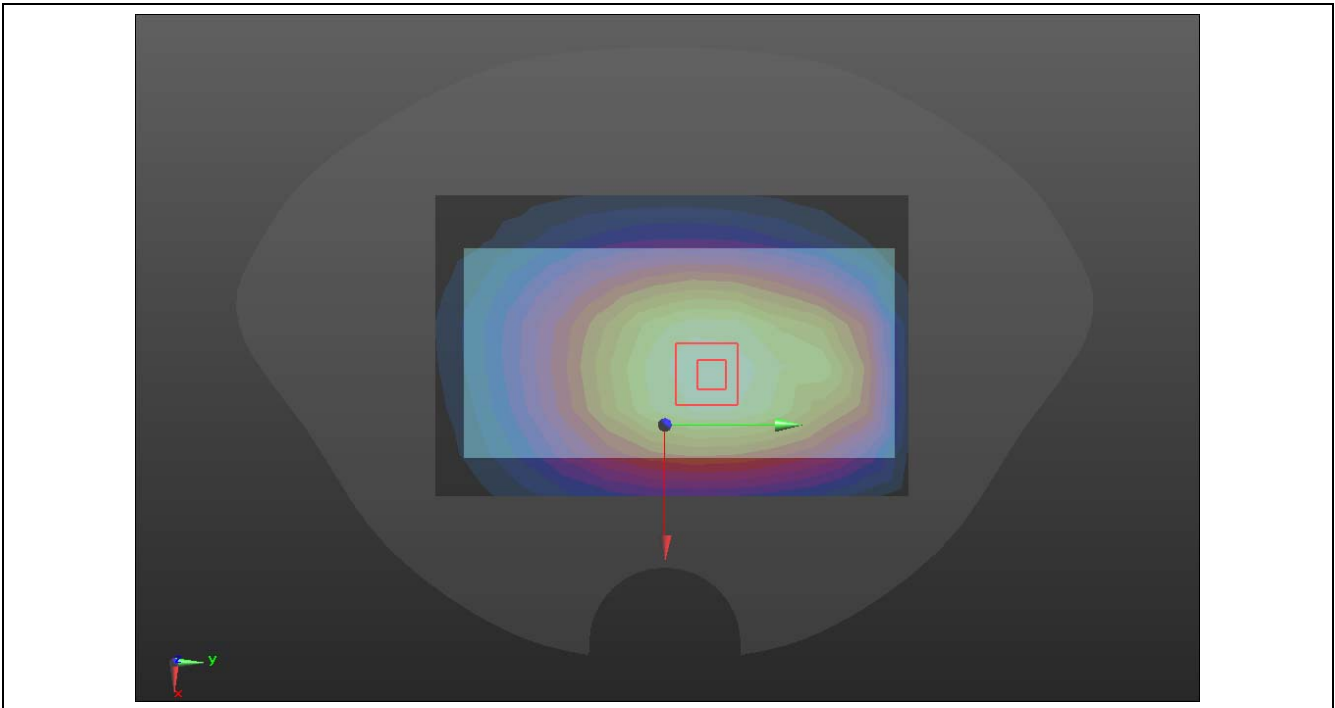
LTE BAND 12

Body-worn	Back(2022.01.18)
Communication System: UID 0, LTE BAND12 (0); Frequency: 707.5 MHz;Duty Cycle: 1:1 Medium parameters used (interpolated): f = 707.5 MHz; $\sigma = 0.887$ S/m; $\epsilon_r = 42.115$; $\rho = 1000$ kg/m ³ Phantom section: Flat Section	
DASY5 Configuration: <ul style="list-style-type: none"> • Probe: EX3DV4 - SN3708; ConvF(9.72, 9.72, 9.72) @ 707.5 MHz; Calibrated: 10/20/2021 • Sensor-Surface: 1.4mm (Mechanical Surface Detection) • Electronics: DAE4 Sn720; Calibrated: 10/8/2021 • Phantom: Twin-SAM 1559; Type: QD 000 P40 CD; Serial: xxxx • Measurement SW: DASY52, Version 52.10 (4); SEMCAD X Version 14.6.14 (7483) <p>BACK/LTE B12/Area Scan (8x12x1): Measurement grid: dx=15mm, dy=15mm Maximum value of SAR (measured) = 0.400 W/kg</p> <p>BACK/LTE B12/Zoom Scan (5x5x5)/Cube 0: Measurement grid: dx=8mm, dy=8mm, dz=5mm Reference Value = 21.62 V/m; Power Drift = -0.04 dB Peak SAR (extrapolated) = 0.442 W/kg SAR(1 g) = 0.345 W/kg; SAR(10 g) = 0.256 W/kg Maximum value of SAR (measured) = 0.407 W/kg</p>	



LTE BAND 17

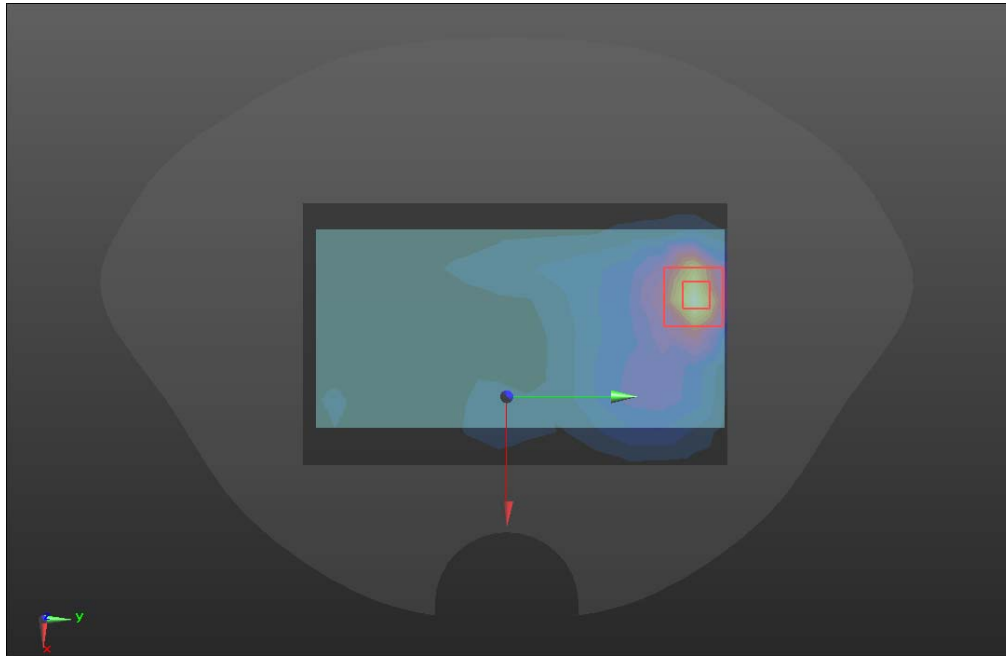
Body-worn	Back(2022.01.18)
<p>Communication System: UID 0, LTE BAND17 (0); Frequency: 710 MHz;Duty Cycle: 1:1 Medium parameters used (interpolated): f = 710 MHz; $\sigma = 0.887$ S/m; $\epsilon_r = 42.102$; $\rho = 1000$ kg/m³ Phantom section: Flat Section</p>	
<p>DASY5 Configuration:</p>	
<ul style="list-style-type: none"> • Probe: EX3DV4 - SN3708; ConvF(9.72, 9.72, 9.72) @ 710 MHz; Calibrated: 10/20/2021 • Sensor-Surface: 1.4mm (Mechanical Surface Detection) • Electronics: DAE4 Sn720; Calibrated: 10/8/2021 • Phantom: Twin-SAM 1559; Type: QD 000 P40 CD; Serial: xxxx • Measurement SW: DASY52, Version 52.10 (4); SEMCAD X Version 14.6.14 (7483) <p>BOTTOM/LTE B17/Area Scan (8x12x1): Measurement grid: dx=15mm, dy=15mm Maximum value of SAR (measured) = 0.0709 W/kg</p> <p>BOTTOM/LTE B17/Zoom Scan (5x5x5)/Cube 0: Measurement grid: dx=8mm, dy=8mm, dz=5mm Reference Value = 8.146 V/m; Power Drift = 0.13 dB Peak SAR (extrapolated) = 17.124 W/kg SAR(1 g) = 0.347 W/kg; SAR(10 g) = 0.131 W/kg Maximum value of SAR (measured) = 0.0939 W/kg</p>	



LTE BAND 38

Body-worn	Back(2022.01.23)
<p>Communication System: UID 0, LTE BAND38 (0); Frequency: 2595 MHz;Duty Cycle: 0.633:1 Medium parameters used (interpolated): $f = 2595$ MHz; $\sigma = 1.954$ S/m; $\epsilon_r = 39.006$; $\rho = 1000$ kg/m³ Phantom section: Flat Section</p> <p>DASY5 Configuration:</p> <ul style="list-style-type: none"> Probe: EX3DV4 - SN3708; ConvF(7.38, 7.38, 7.38) @ 2595 MHz; Calibrated: 10/20/2021 Sensor-Surface: 1.4mm (Mechanical Surface Detection) Electronics: DAE4 Sn720; Calibrated: 10/8/2021 Phantom: Twin-SAM 1559; Type: QD 000 P40 CD; Serial: xxxx Measurement SW: DASY52, Version 52.10 (4); SEMCAD X Version 14.6.14 (7483) <p>BACK/LTE B38/Area Scan (9x14x1): Measurement grid: dx=12mm, dy=12mm Maximum value of SAR (measured) = 0.450 W/kg</p> <p>BACK/LTE B38/Zoom Scan (5x5x5)/Cube 0: Measurement grid: dx=8mm, dy=8mm, dz=5mm Reference Value = 3.107 V/m; Power Drift = -0.15 dB Peak SAR (extrapolated) = 0.583 W/kg</p>	

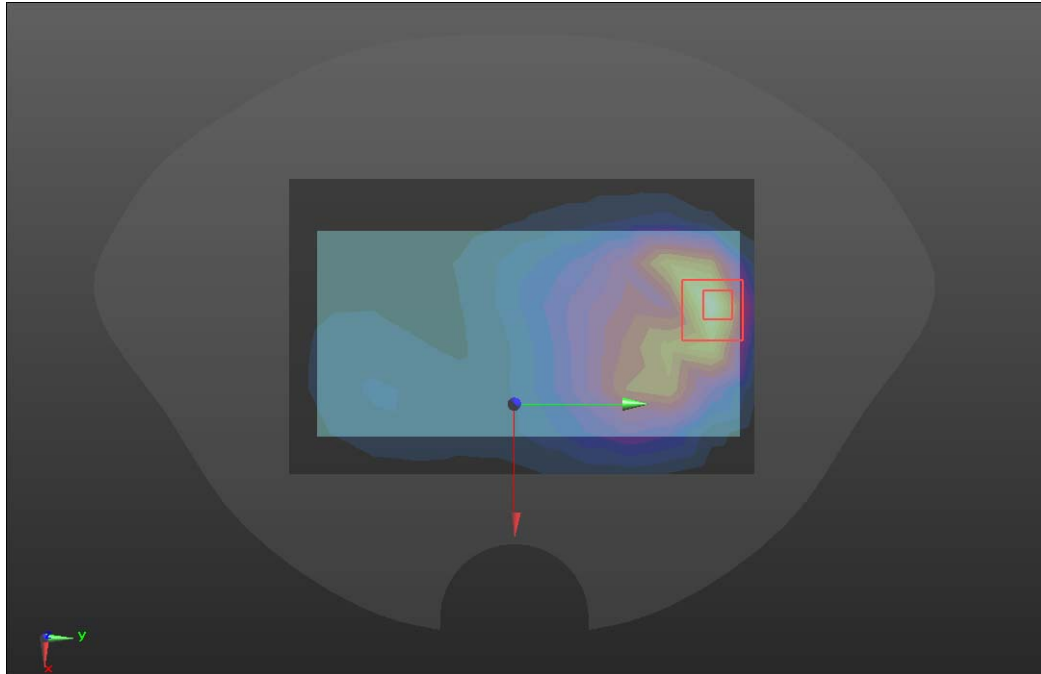
SAR(1 g) = 0.274 W/kg; SAR(10 g) = 0.122 W/kg
 Maximum value of SAR (measured) = 0.461 W/kg



LTE BAND 66

Body-worn	Back(2022.01.20)
Communication System: UID 0, LTE BAND66 (0); Frequency: 1745 MHz;Duty Cycle: 1:1 Medium parameters used (interpolated): f = 1745 MHz; $\sigma = 1.383$ S/m; $\epsilon_r = 40.047$; $\rho = 1000$ kg/m ³	
Phantom section: Flat Section	
DASY5 Configuration:	
<ul style="list-style-type: none"> • Probe: EX3DV4 - SN3708; ConvF(8.17, 8.17, 8.17) @ 1745 MHz; Calibrated: 10/20/2021 • Sensor-Surface: 1.4mm (Mechanical Surface Detection) • Electronics: DAE4 Sn720; Calibrated: 10/8/2021 • Phantom: Twin-SAM 1559; Type: QD 000 P40 CD; Serial: xxxx • Measurement SW: DASY52, Version 52.10 (4); SEMCAD X Version 14.6.14 (7483) <p>BACK/LTE B66/Area Scan (8x12x1): Measurement grid: dx=15mm, dy=15mm Maximum value of SAR (measured) = 0.685 W/kg</p> <p>BACK/LTE B66/Zoom Scan (5x5x5)/Cube 0: Measurement grid: dx=8mm, dy=8mm, dz=5mm</p> <p>Reference Value = 9.102 V/m; Power Drift = -0.11 dB</p> <p>Peak SAR (extrapolated) = 0.822 W/kg</p>	

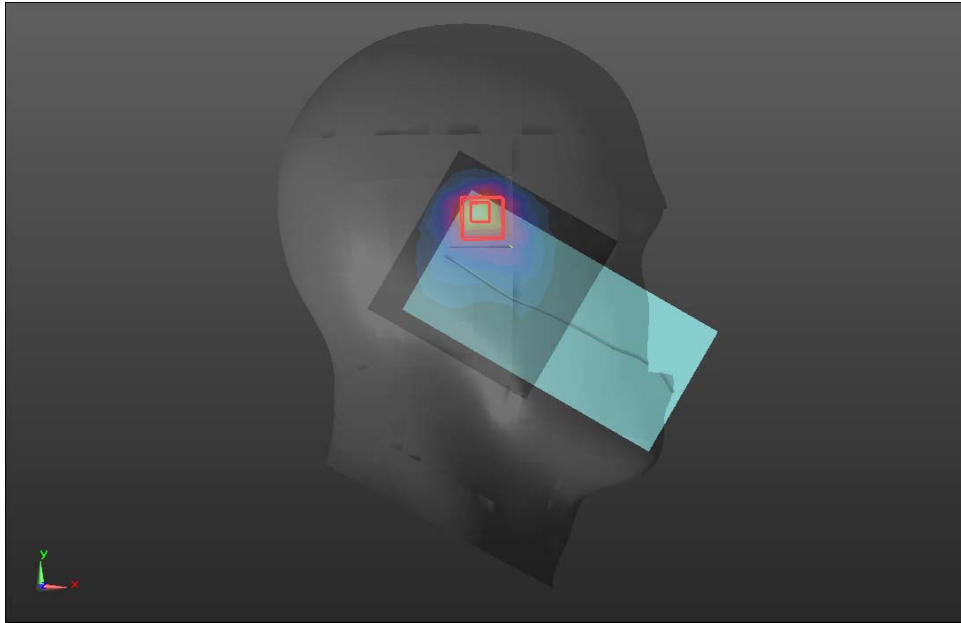
SAR(1 g) = 0.520 W/kg; SAR(10 g) = 0.241 W/kg
 Maximum value of SAR (measured) = 0.666 W/kg



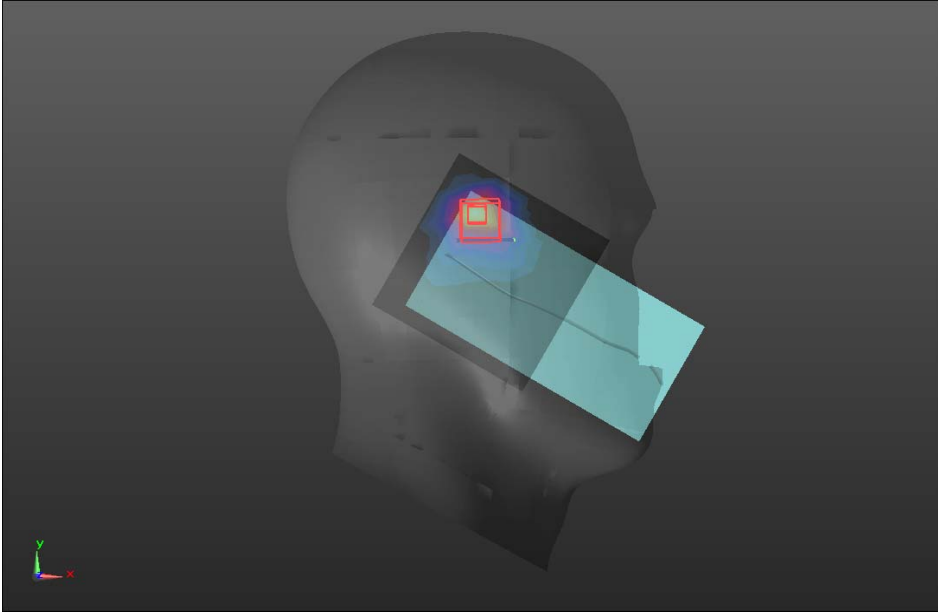
WIFI 2.4GHz

Head	Left cheek (2022.01.22)
Communication System: UID 0, WIFI 2.4GHz (0); Frequency: 2437 MHz;Duty Cycle: 0.9984:1	
Medium parameters used (interpolated): f = 2437 MHz; $\sigma = 1.788$ S/m; $\epsilon_r = 39.219$; $\rho = 1000$ kg/m ³	
Phantom section: Left Section	
DASY5 Configuration:	
<ul style="list-style-type: none"> Probe: EX3DV4 - SN3708; ConvF(7.45, 7.45, 7.45) @ 2437 MHz; Calibrated: 10/20/2021 	
<ul style="list-style-type: none"> Sensor-Surface: 1.4mm (Mechanical Surface Detection) 	
<ul style="list-style-type: none"> Electronics: DAE4 Sn720; Calibrated: 10/8/2021 	
<ul style="list-style-type: none"> Phantom: Twin-SAM 1559; Type: QD 000 P40 CD; Serial: xxxx 	
<ul style="list-style-type: none"> Measurement SW: DASY52, Version 52.10 (4); SEMCAD X Version 14.6.14 (7483) 	
<p>LC/WIFI2.4/Area Scan (9x9x1): Measurement grid: dx=12mm, dy=12mm</p>	
<p>Maximum value of SAR (measured) = 1.38 W/kg</p>	
<p>LC/WIFI2.4/Zoom Scan (5x5x5)/Cube 0: Measurement grid: dx=8mm, dy=8mm, dz=5mm</p>	
<p>Reference Value = 13.57 V/m; Power Drift = -0.04 dB</p>	

Peak SAR (extrapolated) = 1.82 W/kg
SAR(1 g) = 0.859 W/kg; SAR(10 g) = 0.412 W/kg
Maximum value of SAR (measured) = 1.31 W/kg



Bluetooth

Head	Left cheek (2022.01.22)
<p>Communication System: UID 0, BT (0); Frequency: 2441 MHz;Duty Cycle: 0.791:1 Medium parameters used (interpolated): f = 2441 MHz; $\sigma = 1.792$ S/m; $\epsilon_r = 39.213$; $\rho = 1000$ kg/m³ Phantom section: Left Section</p> <p>DASY5 Configuration:</p> <ul style="list-style-type: none"> • Probe: EX3DV4 - SN3708; ConvF(7.45, 7.45, 7.45) @ 2441 MHz; Calibrated: 10/20/2021 • Sensor-Surface: 1.4mm (Mechanical Surface Detection) • Electronics: DAE4 Sn720; Calibrated: 10/8/2021 • Phantom: Twin-SAM 1559; Type: QD 000 P40 CD; Serial: xxxx • Measurement SW: DASY52, Version 52.10 (4); SEMCAD X Version 14.6.14 (7483) <p>LC/BT/Area Scan (9x9x1): Measurement grid: dx=12mm, dy=12mm Maximum value of SAR (measured) = 0.0907 W/kg</p> <p>LC/BT/Zoom Scan (5x5x5)/Cube 0: Measurement grid: dx=8mm, dy=8mm, dz=5mm Reference Value = 3.370 V/m; Power Drift = 0.08 dB Peak SAR (extrapolated) = 0.122 W/kg SAR(1 g) = 0.054 W/kg; SAR(10 g) = 0.024 W/kg Maximum value of SAR (measured) = 0.0898 W/kg</p>	
	

Note: All the modulated signal with different PAR (refers to RF WWAN report) already take into account, but not mentioned in this inherent log file template.