

Appendix B: SAR Measurement results Plots

Plot	Frequency/Mode	Testing Position and Channel	Test Date
1	GSM850	Right Cheek Middle	2019/12/16
2	GSM850/GPRS4Tx	Body Back, Middle ,10mm	2019/12/16
3	GSM1900	Left Cheek Middle	2019/12/18
4	GSM1900/GPRS4Tx	Edge C, Middle ,10mm	2019/12/18
5	WCDMA1900	Left Cheek Middle	2019/12/18
6	WCDMA1900	Edge C, Middle ,10mm	2019/12/18
7	WCDMA1700	Left Cheek Low	2019/12/17
8	WCDMA1700	Edge C, Low ,10mm	2019/12/17
9	WCDMA850	Right Cheek Middle	2019/12/16
10	WCDMA850	Body Back, Middle ,10mm	2019/12/16
11	LTE Band2	Left Cheek Middle	2019/12/18
12	LTE Band2	Edge C, Middle ,10mm	2019/12/18
13	LTE Band4	Left Cheek Middle	2019/12/17
14	LTE Band4	Edge C, Middle ,10mm	2019/12/17
15	LTE Band5	Right Cheek Middle	2019/12/16
16	LTE Band5	Body Back, Middle ,10mm	2019/12/16
17	LTE Band7	Left Cheek Middle	2019/12/20
18	LTE Band7	Body Back, Middle ,15mm	2019/12/20
19	LTE Band26	Right Cheek Middle	2019/12/16
20	LTE Band26	Body Back, Middle ,10mm	2019/12/16
21	LTE Band66	Left Cheek Middle	2019/12/17
22	LTE Band66	Body Back, Middle ,10mm	2019/12/17
23	WIFI 2.4G 802.11b	Left Cheek Middle	2019/12/19
24	WIFI 2.4G 802.11b	Body Face, Middle ,15mm	2019/12/19
25	WIFI 5G 802.11a	Left Cheek Middle	2019/12/21
26	WIFI 5G 802.11a	Body Face, Middle ,15mm	2019/12/21

Plot 1: GSM850, Right Cheek, Middle

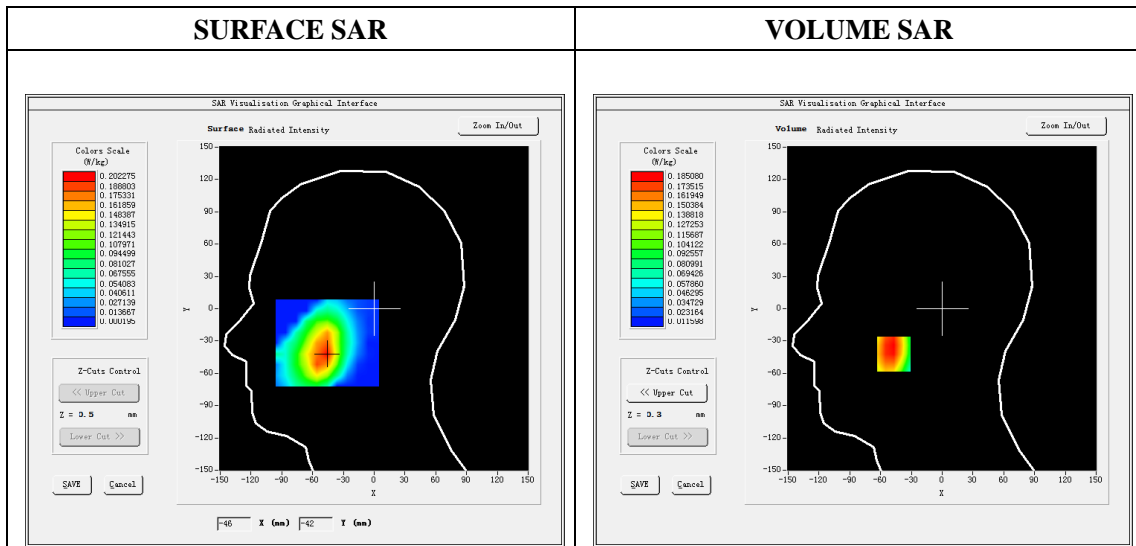
Type: Phone measurement
 Date of measurement: 12/16/2019
 Measurement duration: 22 minutes 03 seconds
 Mobile Phone IMEI number: --

A. Experimental conditions.

Area Scan	dx=8mm dy=8mm
ZoomScan	5x5x7,dx=8mm dy=8mm dz=5mm
Phantom	Validation plane
Device Position	Right Cheek
Band	GSM850
Channels	190
Signal	GSM (Duty cycle: 1:8.3)

B. SAR Measurement Results

E-Field Probe	SATIMO SN_27/15_EPG0261
Frequency (MHz)	836.6
Relative permittivity (real part)	41.58
Relative permittivity (imaginary part)	20.05
Conductivity (S/m)	0.93
Variation (%)	-3.32
ConvF:	1.92

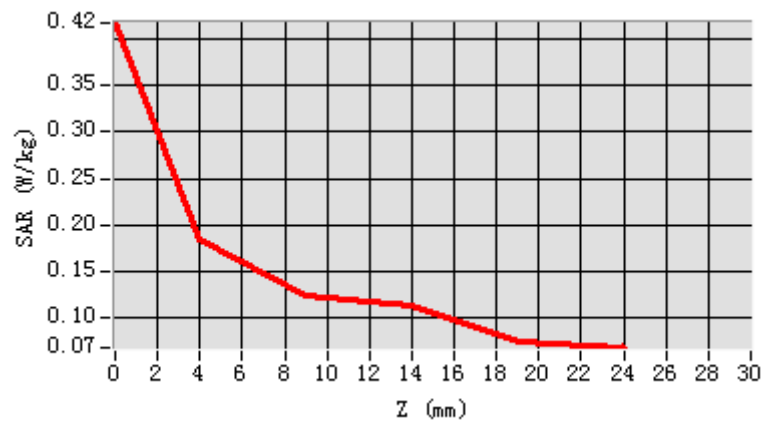


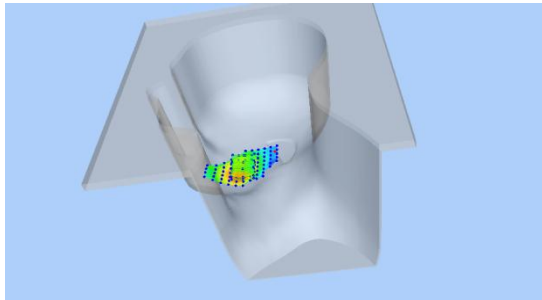
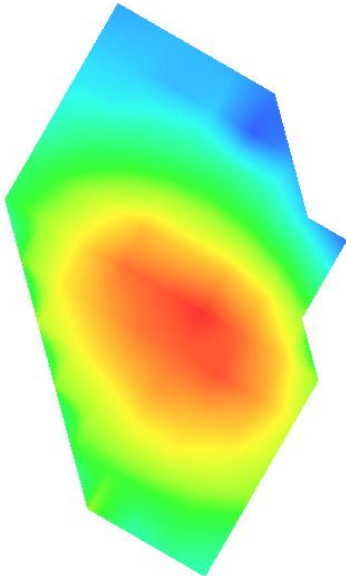
Maximum location: X=-47.00, Y=-42.00

SAR Peak: 0.23W/kg

SAR 10g (W/Kg)	0.130380
SAR 1g (W/Kg)	0.180190

Z (mm)	0.00	4.00	9.00	14.00	19.00
SAR (W/Kg)	0.4179	0.1851	0.1231	0.1125	0.0727



3D screen shot	Hot spot position
	

Plot 2: GPRS850, Back, Middle,10mm

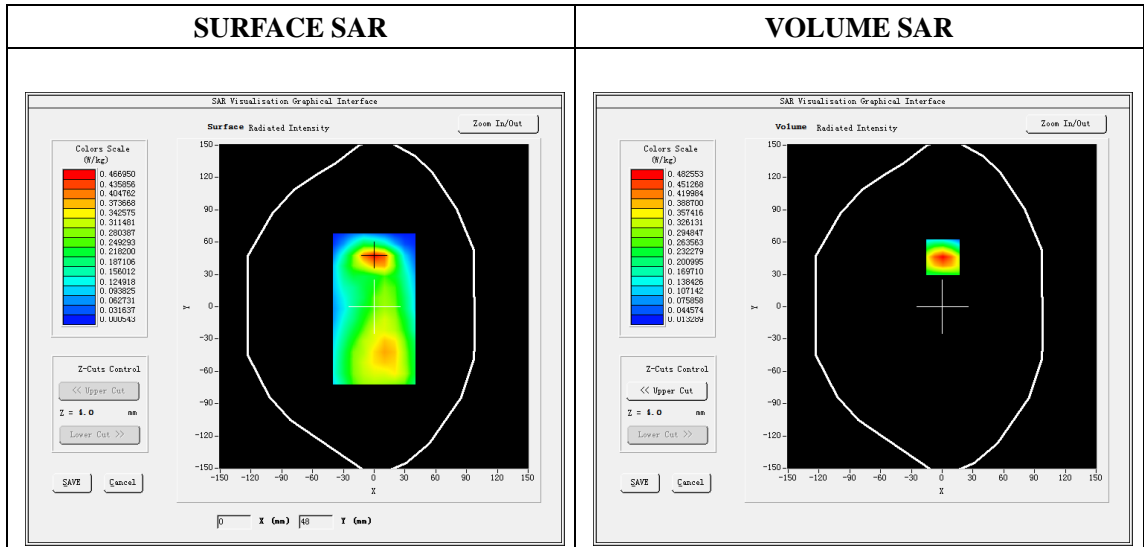
Type: Phone measurement
 Date of measurement: 12/16/2019
 Measurement duration: 22 minutes 01 seconds
 Mobile Phone IMEI number: --

A. Experimental conditions.

Area Scan	dx=8mm dy=8mm
ZoomScan	5x5x7,dx=8mm dy=8mm dz=5mm
Phantom	Validation plane
Device Position	Back
Band	GSPRS850_4Tx
Channels	190
Signal	GPRS(Duty cycle: 1:2)

B. SAR Measurement Results

E-Field Probe	SATIMO SN_27/15_EPG0261
Frequency (MHz)	836.6
Relative permittivity (real part)	55.28
Relative permittivity (imaginary part)	21.34
Conductivity (S/m)	0.99
Variation (%)	-4.05
ConvF:	1.99

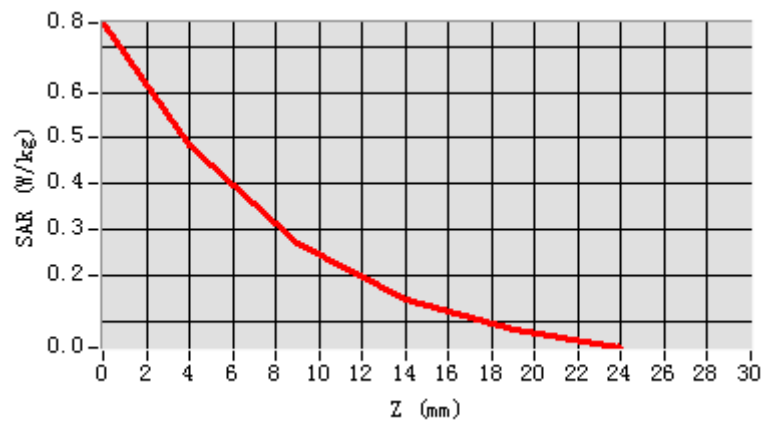


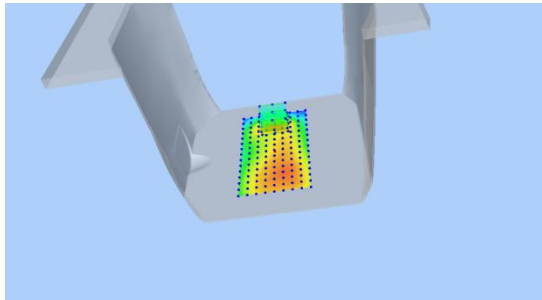
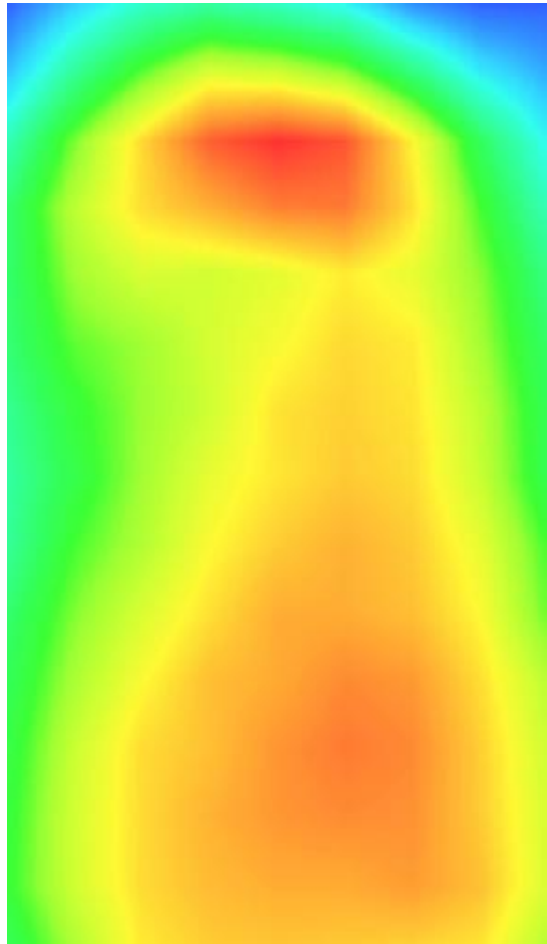
Maximum location: X=1.00, Y=46.00

SAR Peak: 0.76 W/kg

SAR 10g (W/Kg)	0.241784
SAR 1g (W/Kg)	0.458527

Z (mm)	0.00	4.00	9.00	14.00	19.00
SAR (W/Kg)	0.7518	0.4826	0.2682	0.1471	0.0815



3D screen shot	Hot spot position
	

Plot 3: GSM1900, Left Cheek, Middle

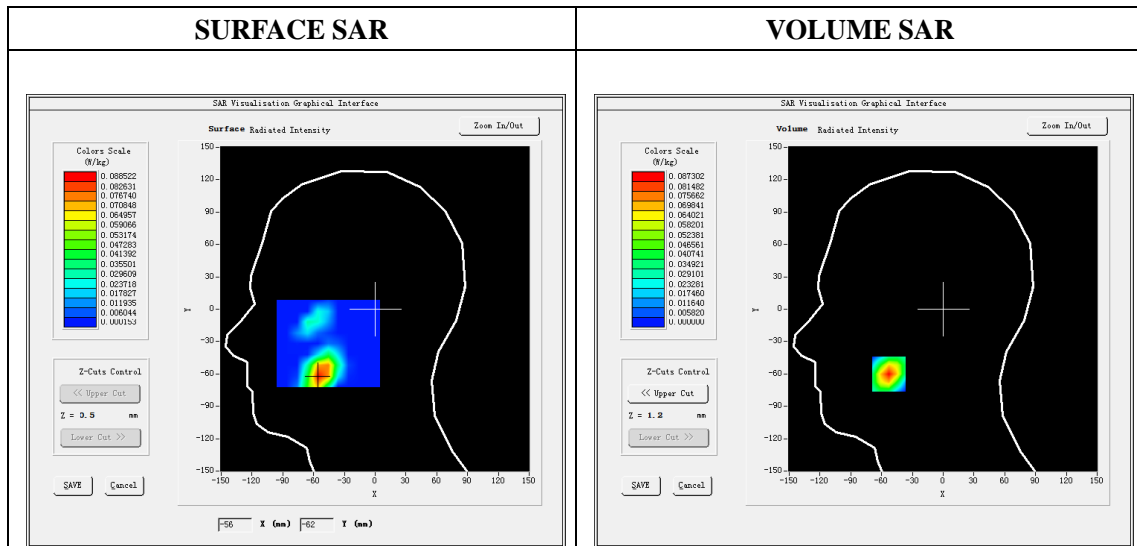
Type: Phone measurement
 Date of measurement: 12/18/2019
 Measurement duration: 22 minutes 04 seconds
 Mobile Phone IMEI number: --

A. Experimental conditions.

Area Scan	dx=8mm dy=8mm
Zoom Scan	5x5x7,dx=8mm dy=8mm dz=5mm
Phantom	Validation plane
Device Position	Left Cheek
Band	GSM1900
Channels	661
Signal	GSM (Duty cycle: 1:8.3)

B. SAR Measurement Results

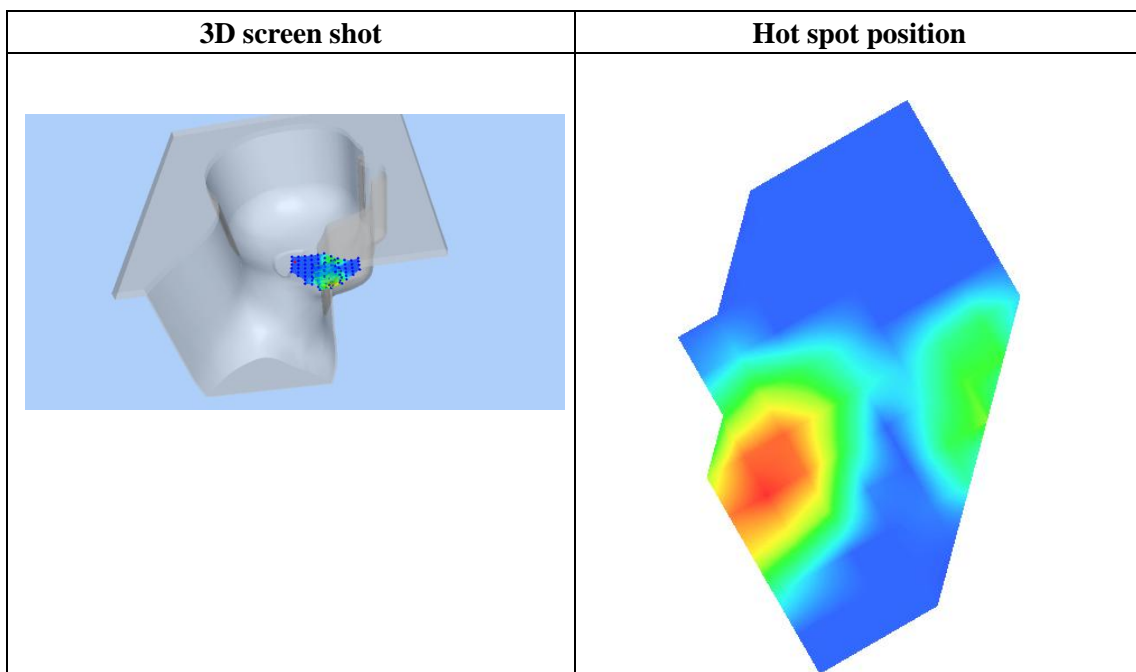
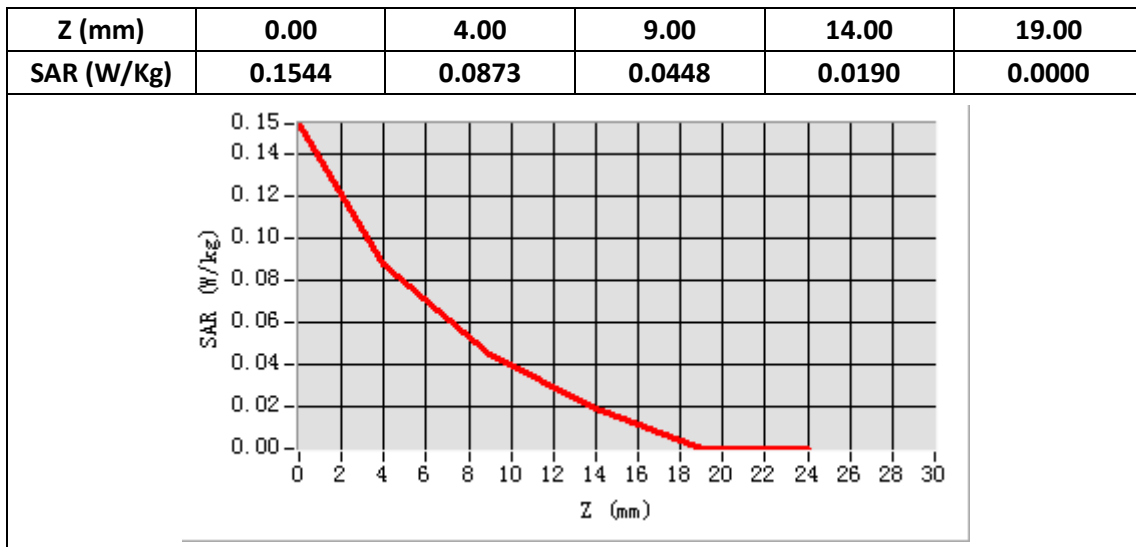
E-Field Probe	SATIMO SN_27/15_EPG0261
Frequency (MHz)	1880
Relative permittivity (real part)	40.39
Relative permittivity (imaginary part)	13.36
Conductivity (S/m)	1.41
Variation (%)	2.40
ConvF:	2.34



Maximum location: X=-53.00, Y=-60.00

SAR Peak: 0.14 W/kg

SAR 10g (W/Kg)	0.035111
SAR 1g (W/Kg)	0.079227



Plot 4: GPRS1900, Edge C, Middle ,10mm

Type: Phone measurement

Date of measurement: 12/18/2019

Measurement duration: 22 minutes 06 seconds

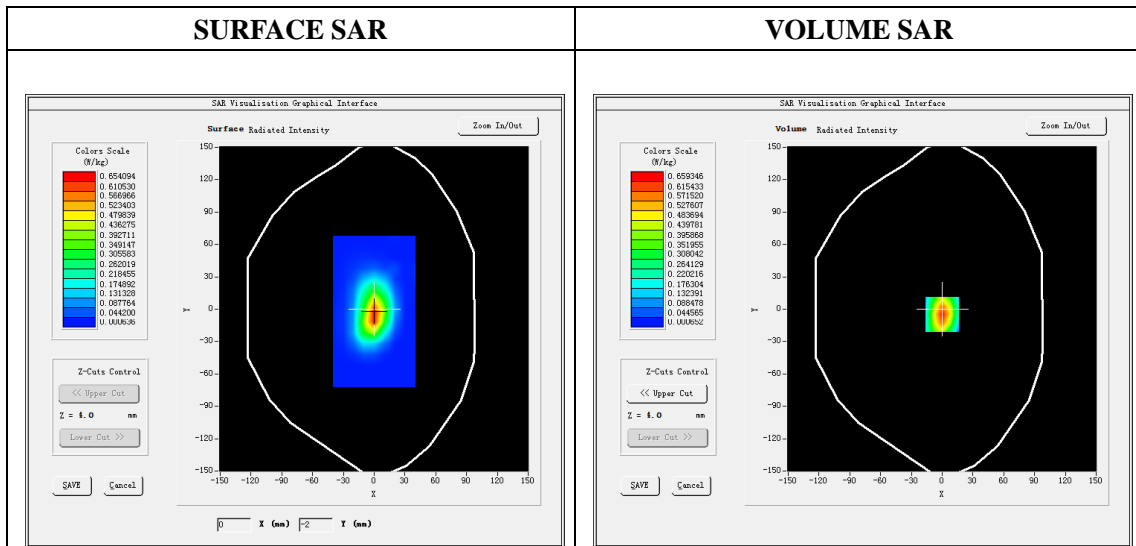
Mobile Phone IMEI number: --

A. Experimental conditions.

Area Scan	dx=8mm dy=8mm
Zoom Scan	5x5x7,dx=8mm dy=8mm dz=5mm
Phantom	Validation plane
Device Position	Edge C
Band	GPRS1900_4Tx
Channels	661
Signal	GPRS(Duty cycle: 1:2)

B. SAR Measurement Results

E-Field Probe	SATIMO SN_27/15_EPG0261
Frequency (MHz)	1880
Relative permittivity (real part)	53.40
Relative permittivity (imaginary part)	14.40
Conductivity (S/m)	1.52
Variation (%)	-1.60
ConvF:	2.39

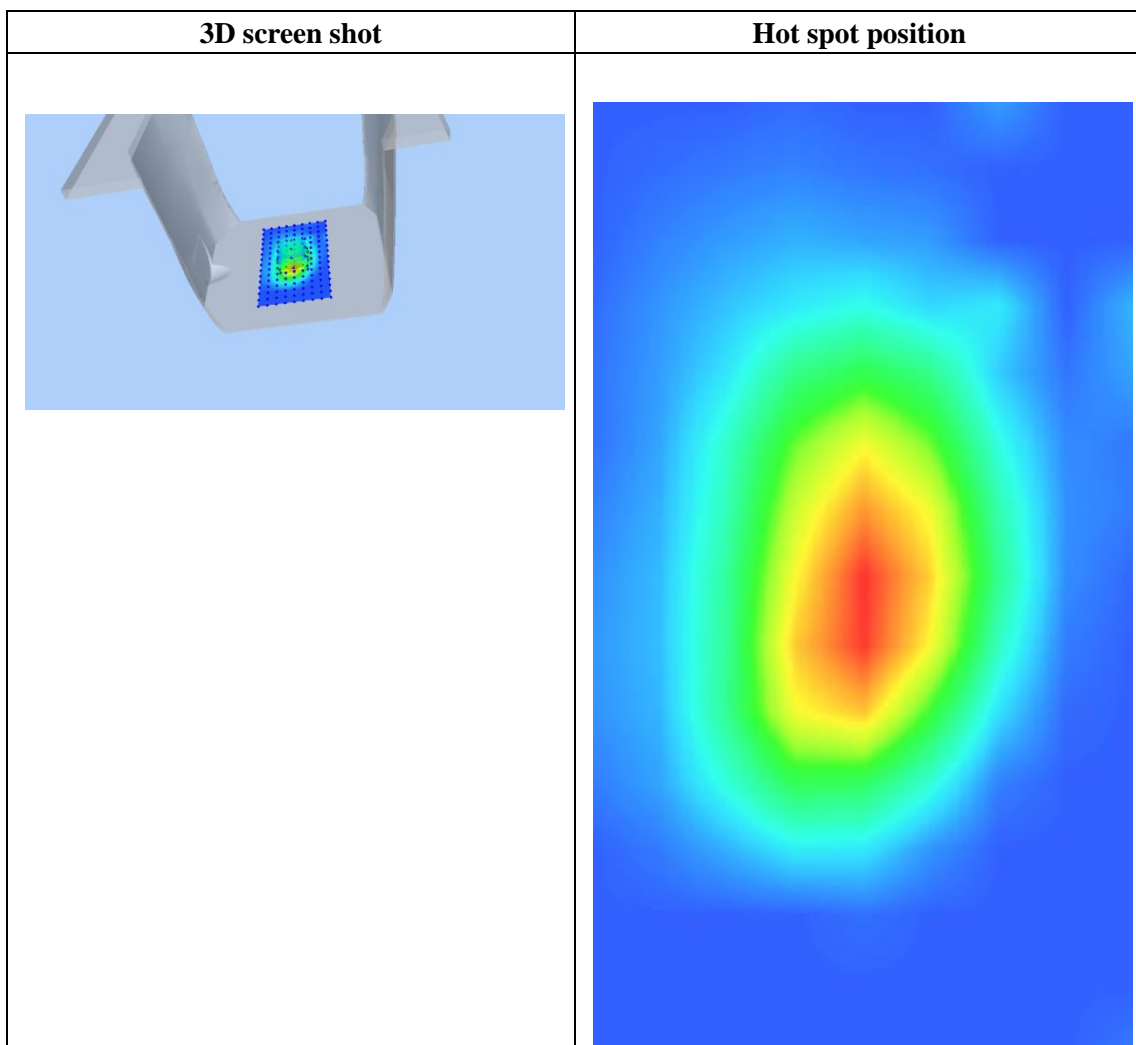
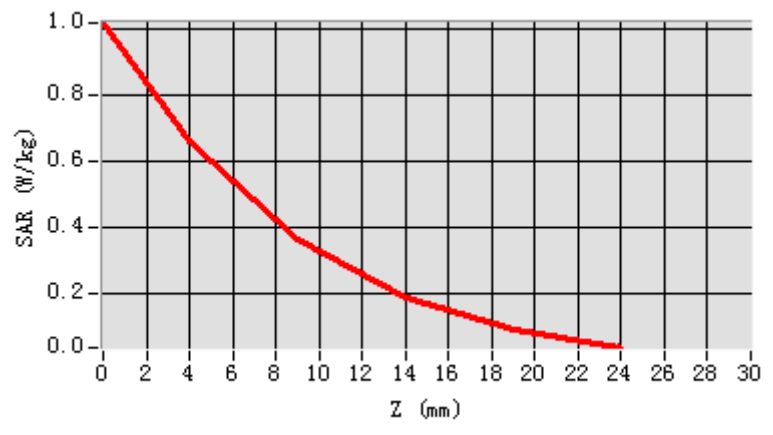


Maximum location: X=0.00, Y=-5.00

SAR Peak: 1.02W/kg

SAR 10g (W/Kg)	0.297429
SAR 1g (W/Kg)	0.603419

Z (mm)	0.00	4.00	9.00	14.00	19.00
SAR (W/Kg)	1.0205	0.6593	0.3640	0.1905	0.0934



Plot 5: WCDMA1900, Left Cheek, Middle,10mm

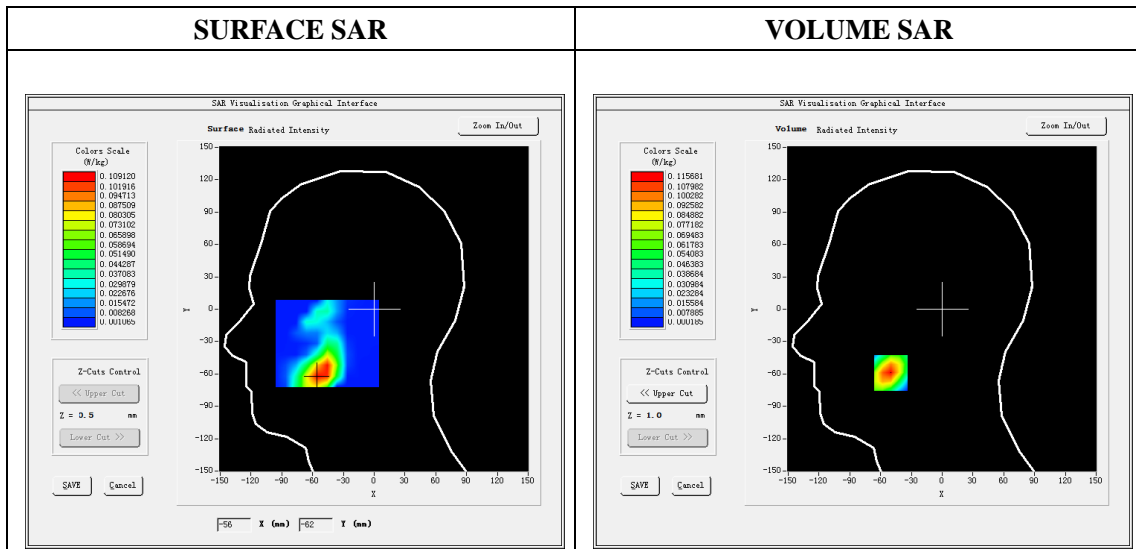
Type: Phone measurement
 Date of measurement: 12/18/2019
 Measurement duration: 22 minutes 02 seconds
 Mobile Phone IMEI number: --

A. Experimental conditions.

Area Scan	dx=8mm dy=8mm
ZoomScan	5x5x7,dx=8mm dy=8mm dz=5mm
Phantom	Validation plane
Device Position	Left Cheek
Band	Band2_WCDMA1900
Channels	9400
Signal	WCDMA (Duty cycle: 1:1)

B. SAR Measurement Results

E-Field Probe	SATIMO SN_27/15_EPG0261
Frequency (MHz)	1880
Relative permittivity (real part)	40.39
Relative permittivity (imaginary)	13.36
Conductivity (S/m)	1.41
Variation (%)	1.03
ConvF:	2.34

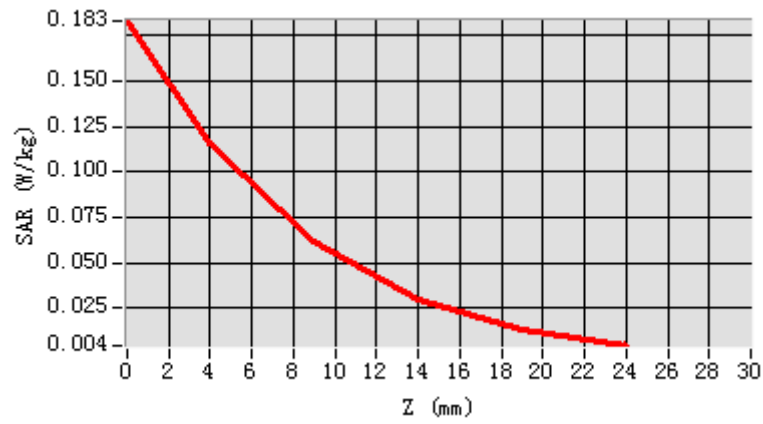


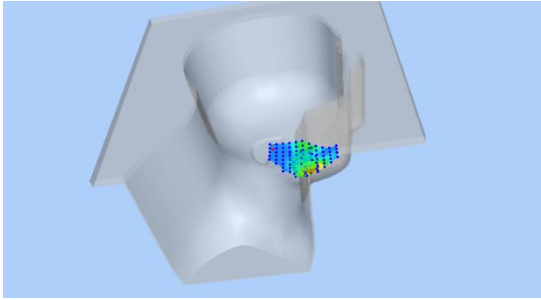
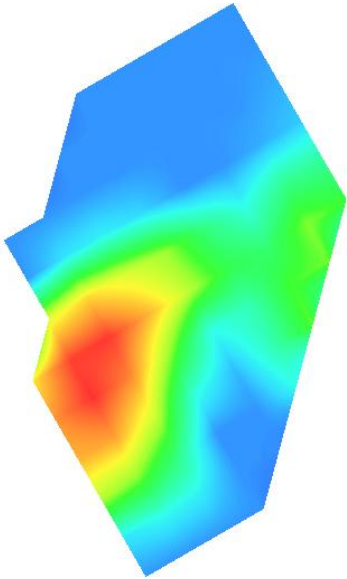
Maximum location: X=-50.00, Y=-59.00

SAR Peak: 0.18W/kg

SAR 10g (W/Kg)	0.052816
SAR 1g (W/Kg)	0.107497

Z (mm)	0.00	4.00	9.00	14.00	19.00
SAR (W/Kg)	0.1831	0.1157	0.0613	0.0301	0.0133



3D screen shot	Hot spot position
	

Plot 6: WCDMA1900, Edge C, Middle,10mm

Type: Phone measurement

Date of measurement: 12/18/2019

Measurement duration: 22 minutes 07 seconds

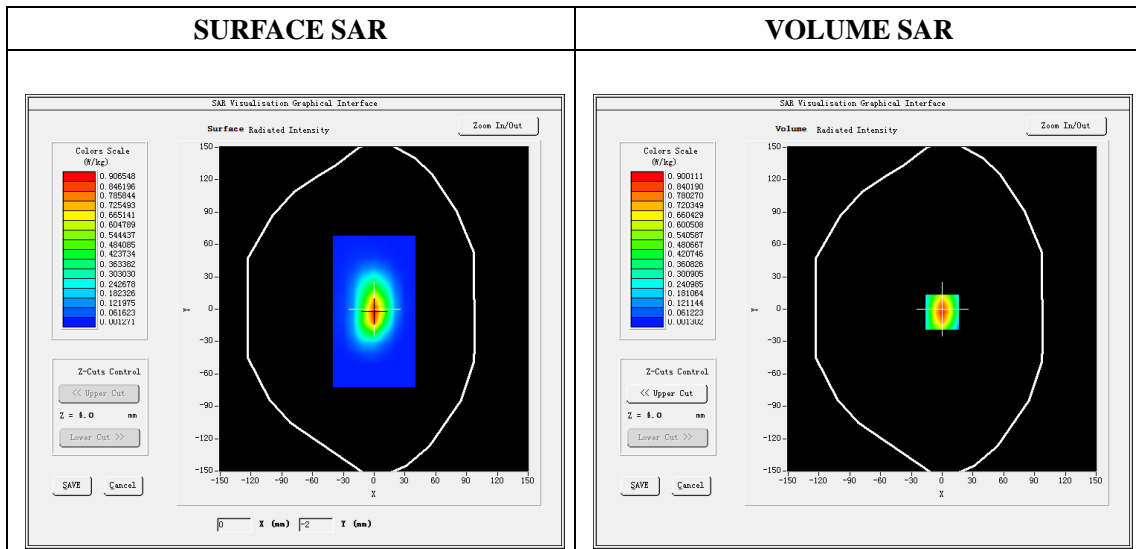
Mobile Phone IMEI number: --

A. Experimental conditions.

Area Scan	dx=8mm dy=8mm
ZoomScan	5x5x7,dx=8mm dy=8mm dz=5mm
Phantom	Validation plane
Device Position	Edge C
Band	Band2_WCDMA1900
Channels	9400
Signal	WCDMA (Duty cycle: 1:1)

B. SAR Measurement Results

E-Field Probe	SATIMO SN_27/15_EPG0261
Frequency (MHz)	1880
Relative permittivity (real part)	53.40
Relative permittivity (imaginary)	14.40
Conductivity (S/m)	1.52
Variation (%)	-1.76
ConvF:	2.39

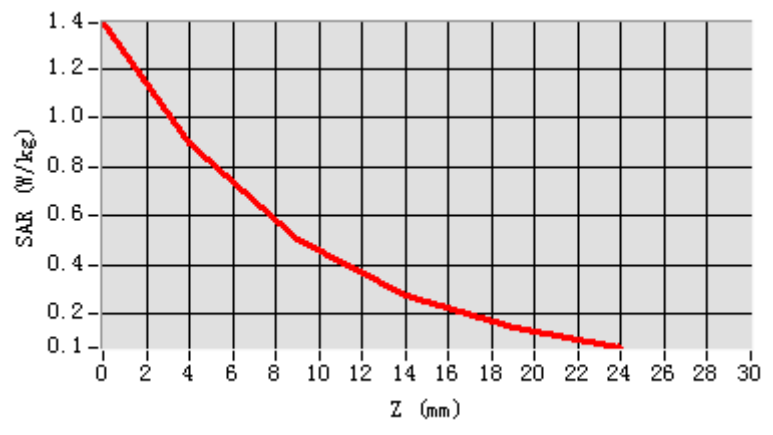


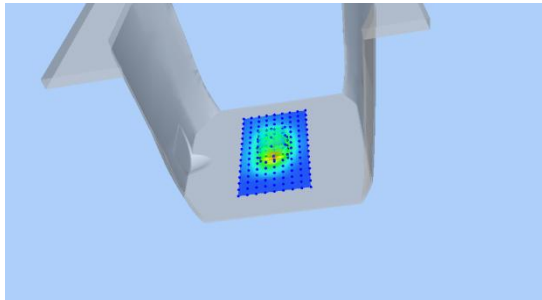
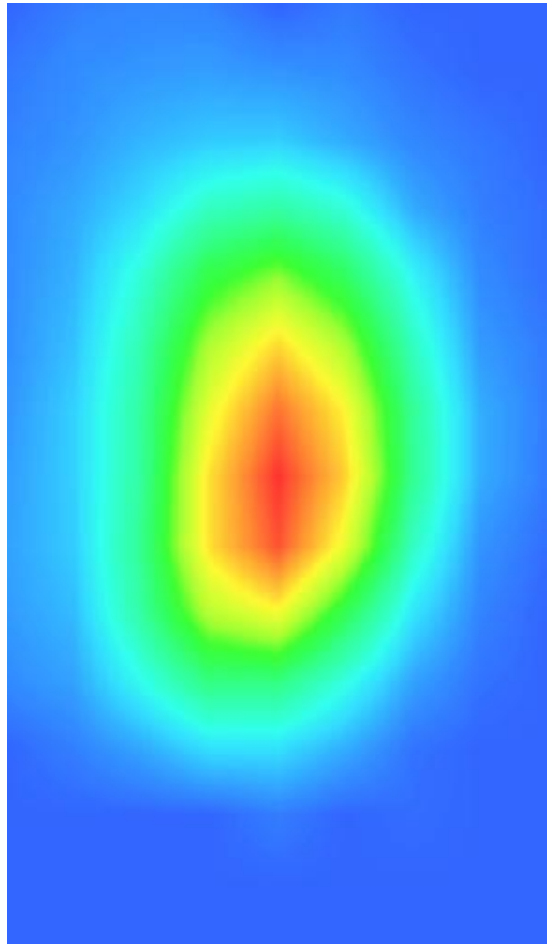
Maximum location: X=0.00, Y=-3.00

SAR Peak: 1.38W/kg

SAR 10g (W/Kg)	0.416689
SAR 1g (W/Kg)	0.824991

Z (mm)	0.00	4.00	9.00	14.00	19.00
SAR (W/Kg)	1.3847	0.9001	0.5049	0.2735	0.1434



3D screen shot	Hot spot position
	

Plot 7: WCDMA1700, Left Cheek, Low

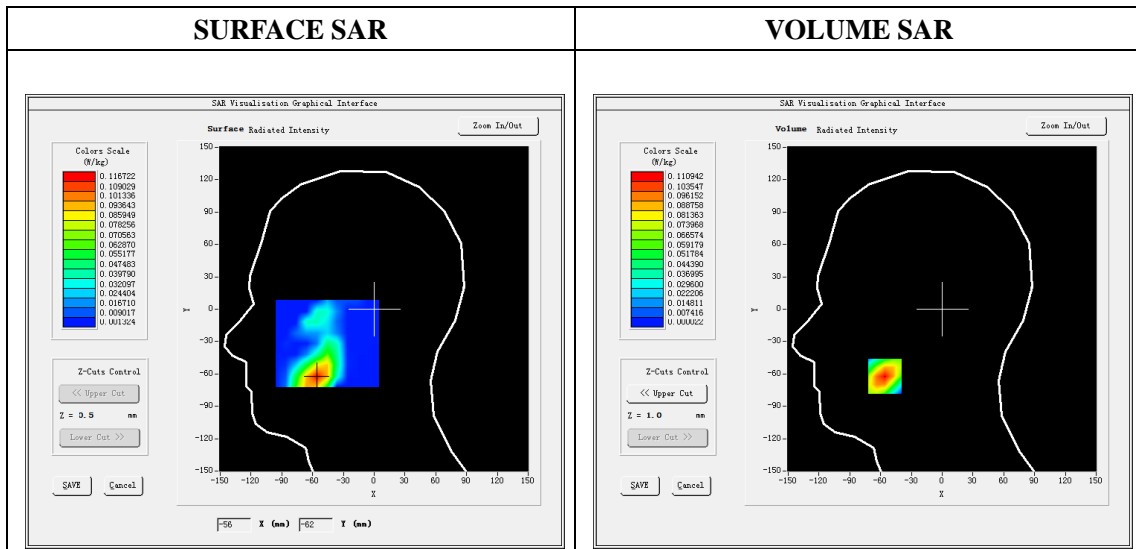
Type: Phone measurement
 Date of measurement: 12/17/2019
 Measurement duration: 22 minutes 05 seconds
 Mobile Phone IMEI number: --

A. Experimental conditions.

Area Scan	dx=8mm dy=8mm
ZoomScan	5x5x7,dx=8mm dy=8mm dz=5mm
Phantom	Validation plane
Device Position	Left Cheek
Band	Band2_WCDMA1700
Channels	1312
Signal	WCDMA (Duty cycle: 1:1)

B. SAR Measurement Results

E-Field Probe	SATIMO SN_27/15_EPG0261
Frequency (MHz)	1712.4
Relative permittivity (real part)	40.46
Relative permittivity (imaginary)	14.20
Conductivity (S/m)	1.42
Variation (%)	2.03
ConvF:	2.14

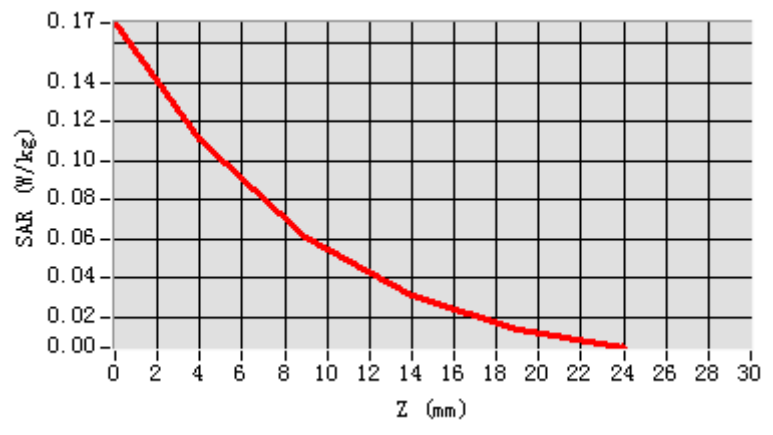


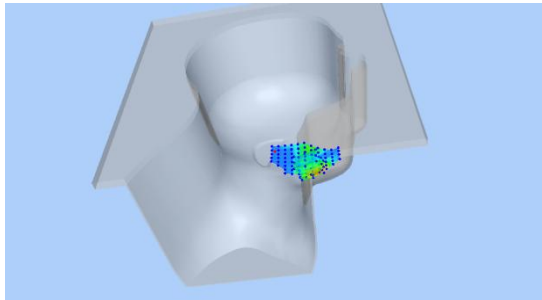
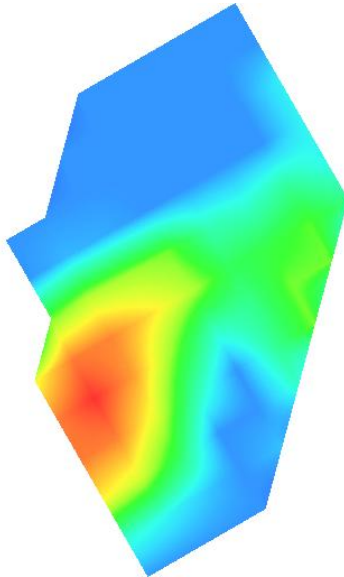
Maximum location: X=-56.00, Y=-62.00

SAR Peak: 0.17W/kg

SAR 10g (W/Kg)	0.052914
SAR 1g (W/Kg)	0.104980

Z (mm)	0.00	4.00	9.00	14.00	19.00
SAR (W/Kg)	0.1706	0.1109	0.0612	0.0312	0.0142



3D screen shot	Hot spot position
	

Plot 8: WCDMA1700, Edge C, Low,10mm

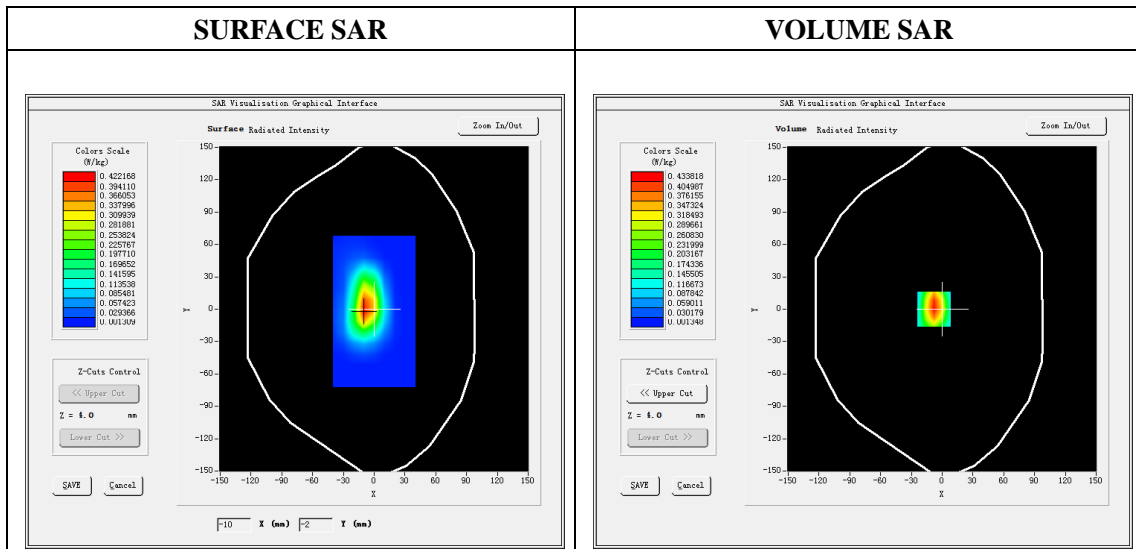
Type: Phone measurement
 Date of measurement: 12/17/2019
 Measurement duration: 22 minutes 08 seconds
 Mobile Phone IMEI number: --

A. Experimental conditions.

Area Scan	dx=8mm dy=8mm
ZoomScan	5x5x7,dx=8mm dy=8mm dz=5mm
Phantom	Validation plane
Device Position	Edge C
Band	Band2_WCDMA1700
Channels	1312
Signal	WCDMA (Duty cycle: 1:1)

B. SAR Measurement Results

E-Field Probe	SATIMO SN_27/15_EPG0261
Frequency (MHz)	1712.4
Relative permittivity (real part)	53.47
Relative permittivity (imaginary)	15.30
Conductivity (S/m)	1.53
Variation (%)	-1.67
ConvF:	2.22

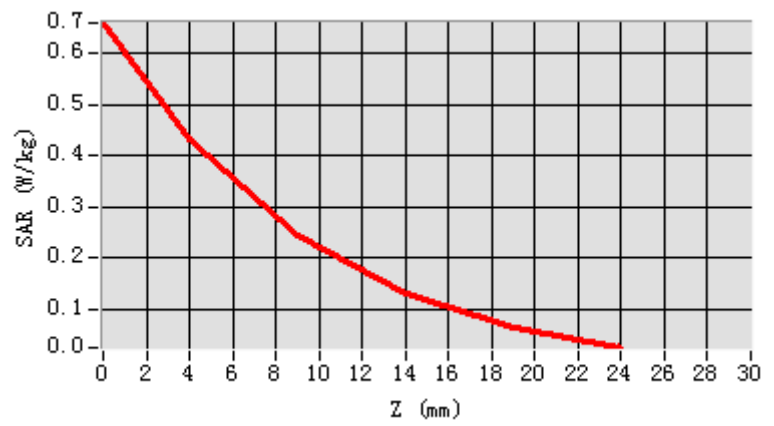


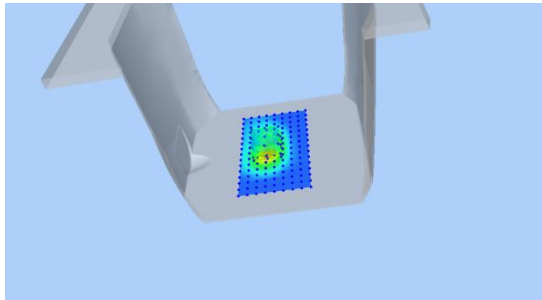
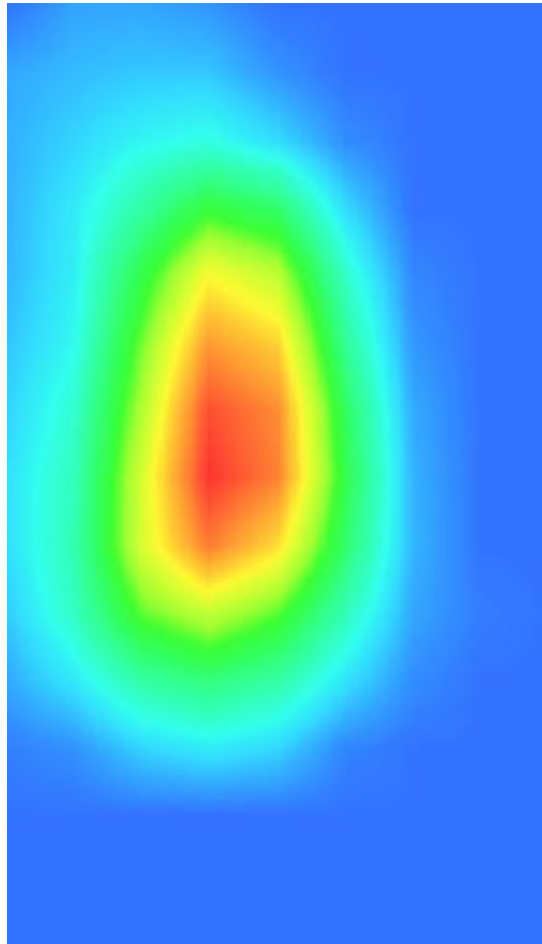
Maximum location: X=-8.00, Y=0.00

SAR Peak: 0.66W/kg

SAR 10g (W/Kg)	0.201501
SAR 1g (W/Kg)	0.399284

Z (mm)	0.00	4.00	9.00	14.00	19.00
SAR (W/Kg)	0.6586	0.4338	0.2457	0.1316	0.0653



3D screen shot	Hot spot position
	

Plot 9: WCDMA850, Right Cheek, Middle

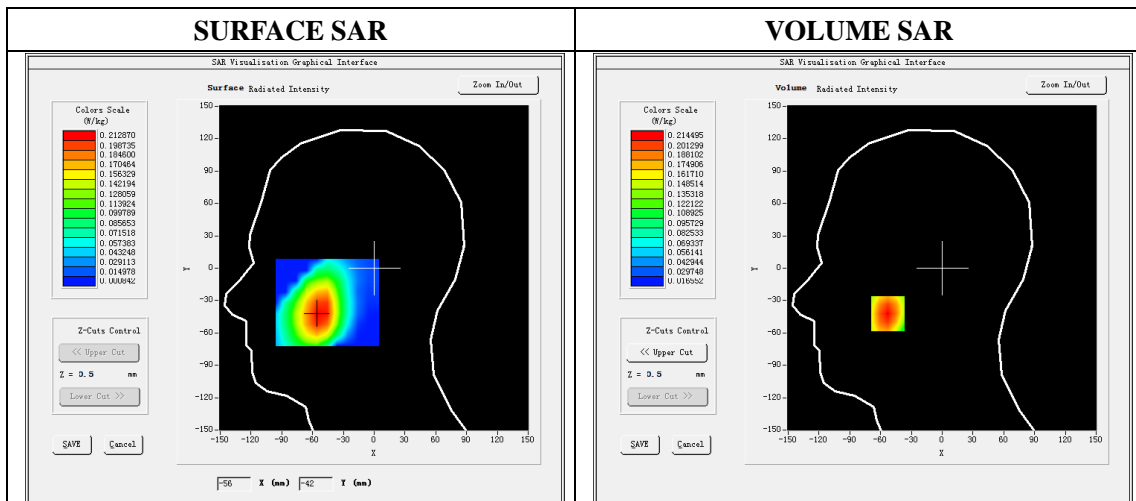
Type: Phone measurement
 Date of measurement: 12/16/2019
 Measurement duration: 22 minutes 12 seconds
 Mobile Phone IMEI number: --

A. Experimental conditions.

Area Scan	dx=8mm dy=8mm
ZoomScan	5x5x7,dx=8mm dy=8mm dz=5mm
Phantom	Validation plane
Device Position	Right Cheek
Band	Band5_WCDMA850
Channels	4183
Signal	WCDMA (Duty cycle: 1:1)

B. SAR Measurement Results

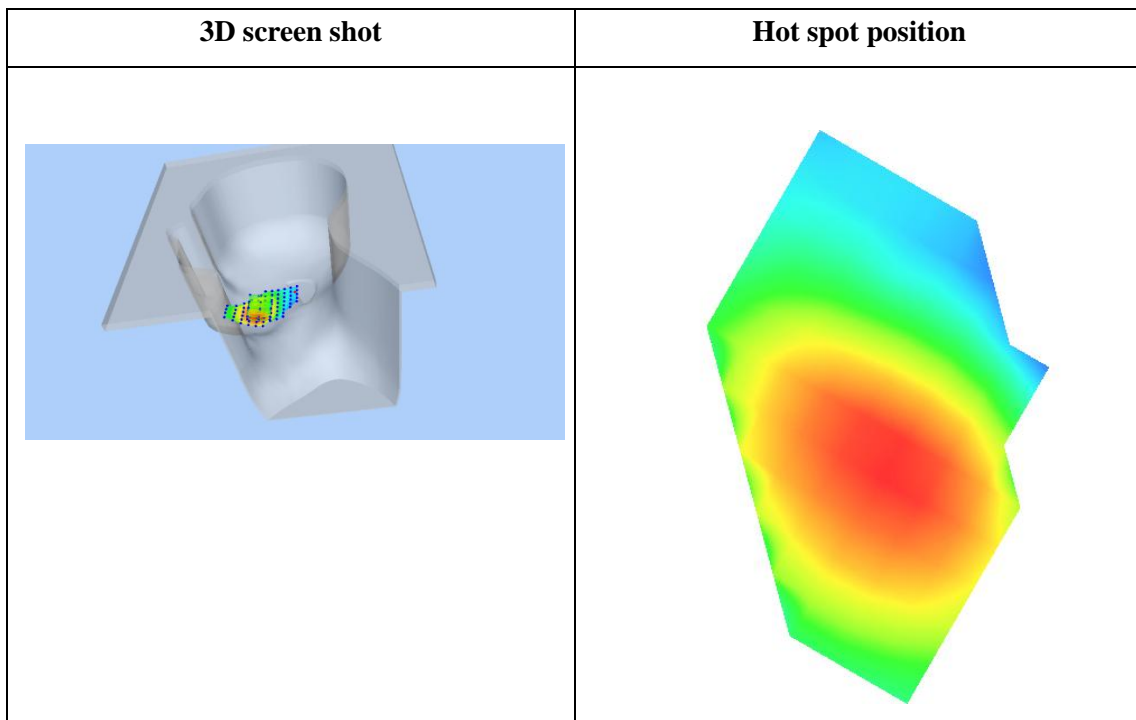
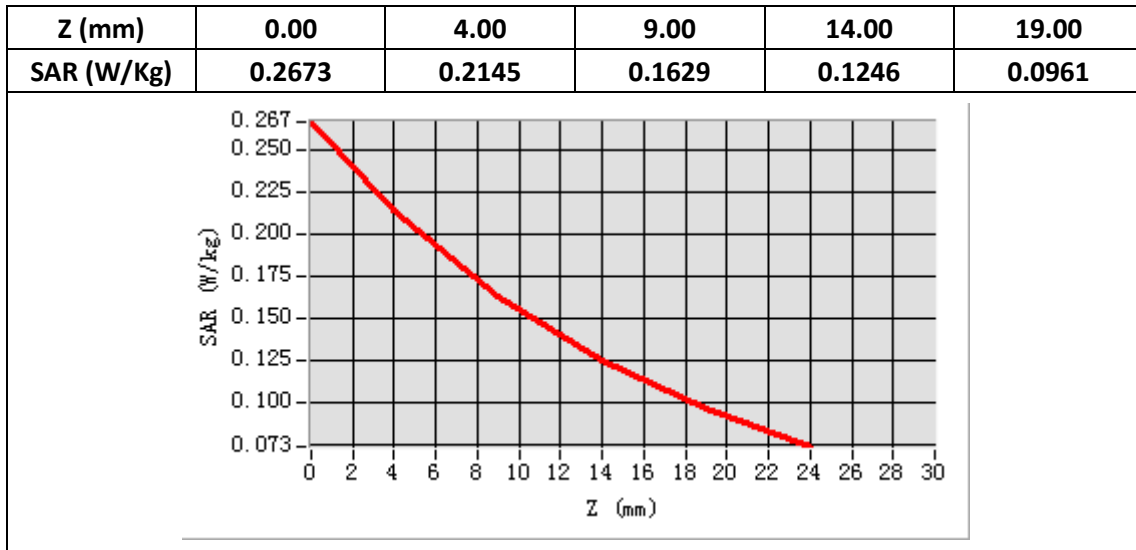
E-Field Probe	SATIMO SN_27/15_EPG0261
Frequency (MHz)	836.6
Relative permittivity (real part)	41.58
Relative permittivity (imaginary)	20.05
Conductivity (S/m)	0.93
Variation (%)	-2.67
ConvF:	1.92



Maximum location: X=-53.00, Y=-42.00

SAR Peak: 0.27W/kg

SAR 10g (W/Kg)	0.146405
SAR 1g (W/Kg)	0.205415



Plot 10: WCDMA850, Back, Middle,10mm

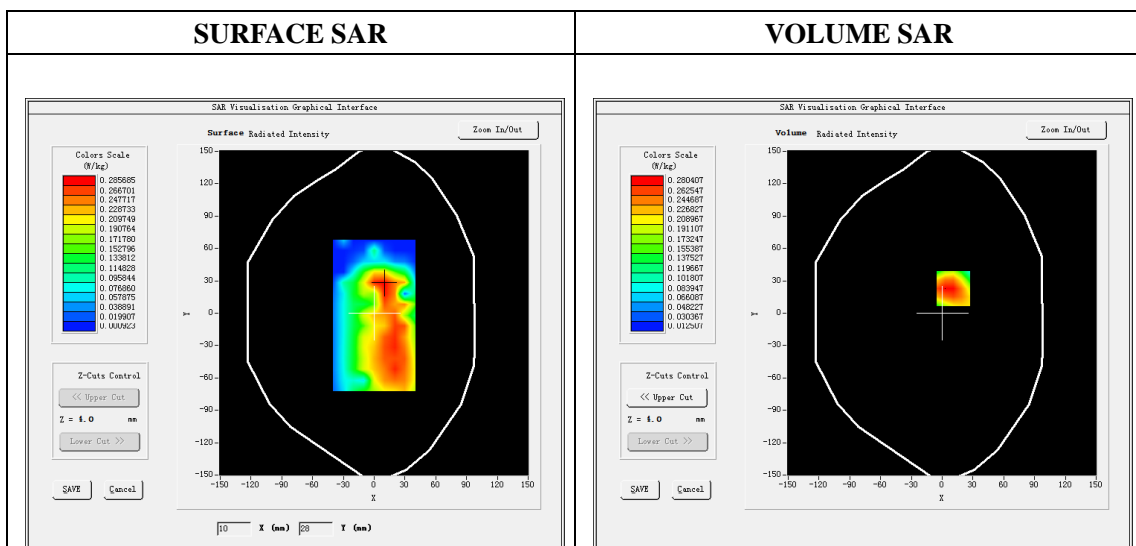
Type: Phone measurement
 Date of measurement: 12/16/2019
 Measurement duration: 22 minutes 09 seconds
 Mobile Phone IMEI number: --

A. Experimental conditions.

Area Scan	dx=8mm dy=8mm
ZoomScan	5x5x7,dx=8mm dy=8mm dz=5mm
Phantom	Validation plane
Device Position	Back
Band	Band5_WCDMA850
Channels	4183
Signal	WCDMA (Duty cycle: 1:1)

B. SAR Measurement Results

E-Field Probe	SATIMO SN_27/15_EPG0261
Frequency (MHz)	836.6
Relative permittivity (real part)	55.28
Relative permittivity (imaginary)	21.34
Conductivity (S/m)	0.99
Variation (%)	1.46
ConvF:	1.99

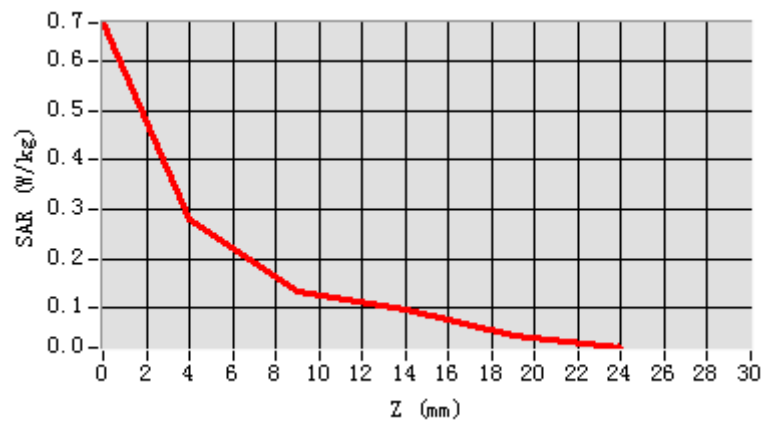


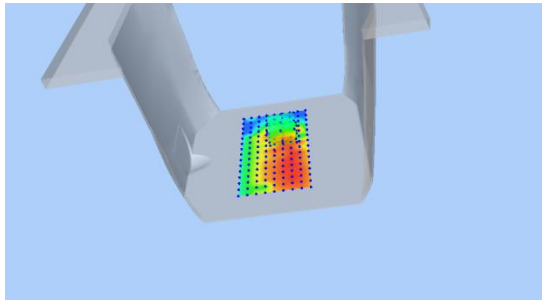
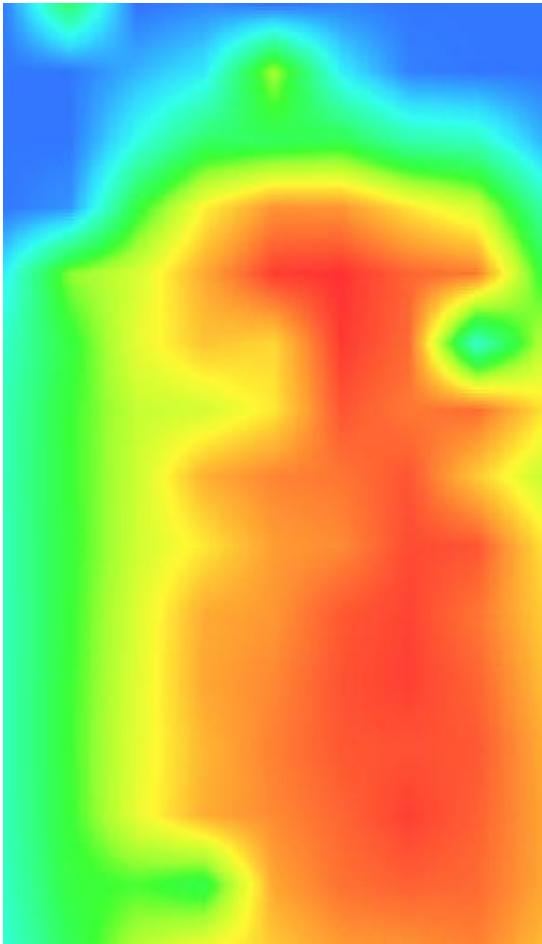
Maximum location: X=11.00, Y=23.00

SAR Peak: 0.43W/kg

SAR 10g (W/Kg)	0.164199
SAR 1g (W/Kg)	0.275113

Z (mm)	0.00	4.00	9.00	14.00	19.00
SAR (W/Kg)	0.6772	0.2804	0.1348	0.0991	0.0443



3D screen shot	Hot spot position
	

Plot 11: LTE Band2, 20MHz, Left Cheek, Middle

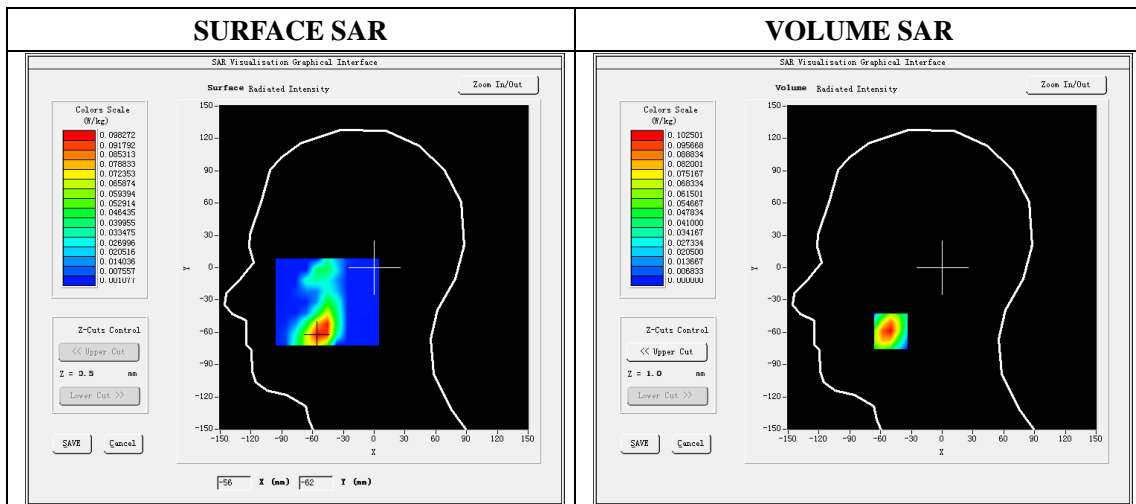
Type: Phone measurement
 Date of measurement: 12/18/2019
 Measurement duration: 22 minutes 11 econds
 Mobile Phone IMEI number: --

A. Experimental conditions.

Area Scan	dx=8mm dy=8mm
ZoomScan	5x5x7,dx=8mm dy=8mm dz=5mm
Phantom	Validation plane
Device Position	Left Cheek
Band	LTE Band 2
Channels	18900
Signal	LTE (Duty cycle: 1:1)

B. SAR Measurement Results

E-Field Probe	SATIMO SN_27/15_EPG0261
Frequency (MHz)	1880
Relative permittivity (real part)	40.39
Relative permittivity (imaginary)	13.36
Conductivity (S/m)	1.41
Variation (%)	0.21
ConvF:	2.34

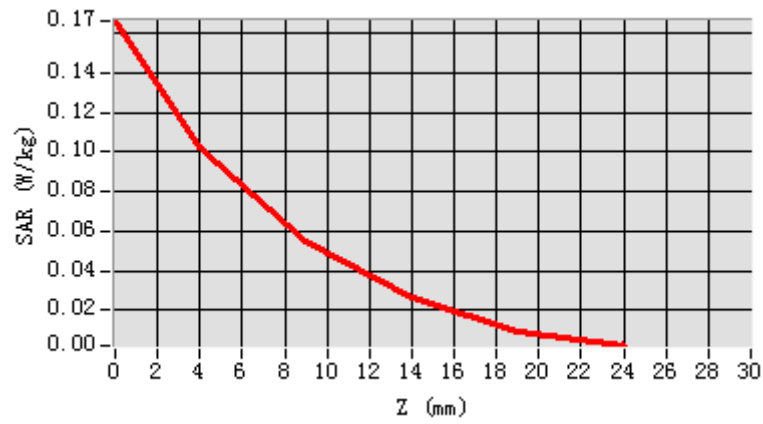


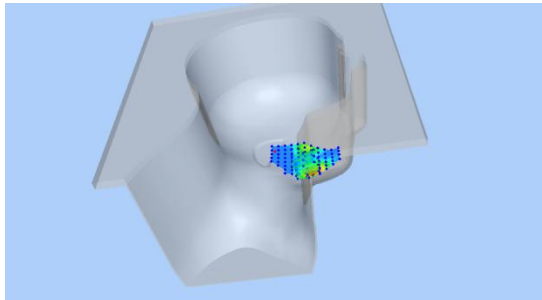
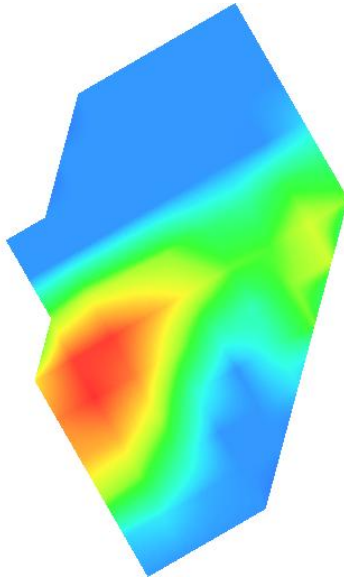
Maximum location: X=-50.00, Y=-59.00

SAR Peak: 0.16 W/kg

SAR 10g (W/Kg)	0.046599
SAR 1g (W/Kg)	0.096002

Z (mm)	0.00	4.00	9.00	14.00	19.00
SAR (W/Kg)	0.1665	0.1025	0.0550	0.0268	0.0088



3D screen shot	Hot spot position
	

Plot 12: LTE Band2, 20MHz, Edge C, Middle,10mm

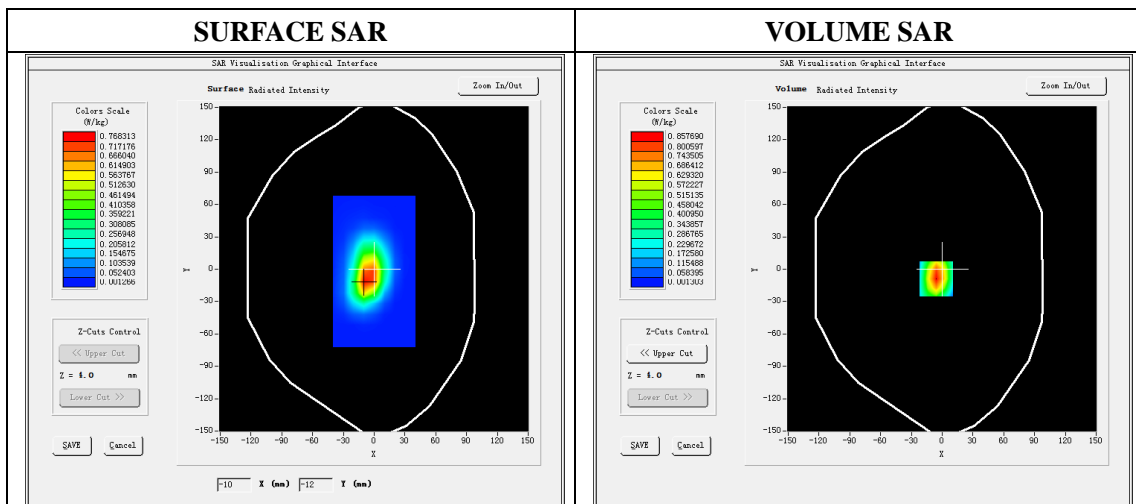
Type: Phone measurement
 Date of measurement: 12/18/2019
 Measurement duration: 22 minutes 10 seconds
 Mobile Phone IMEI number: --

A. Experimental conditions.

Area Scan	dx=8mm dy=8mm
ZoomScan	5x5x7,dx=8mm dy=8mm dz=5mm
Phantom	Validation plane
Device Position	Edge C
Band	LTE Band 2
Channels	18900
Signal	LTE (Duty cycle: 1:1)

B. SAR Measurement Results

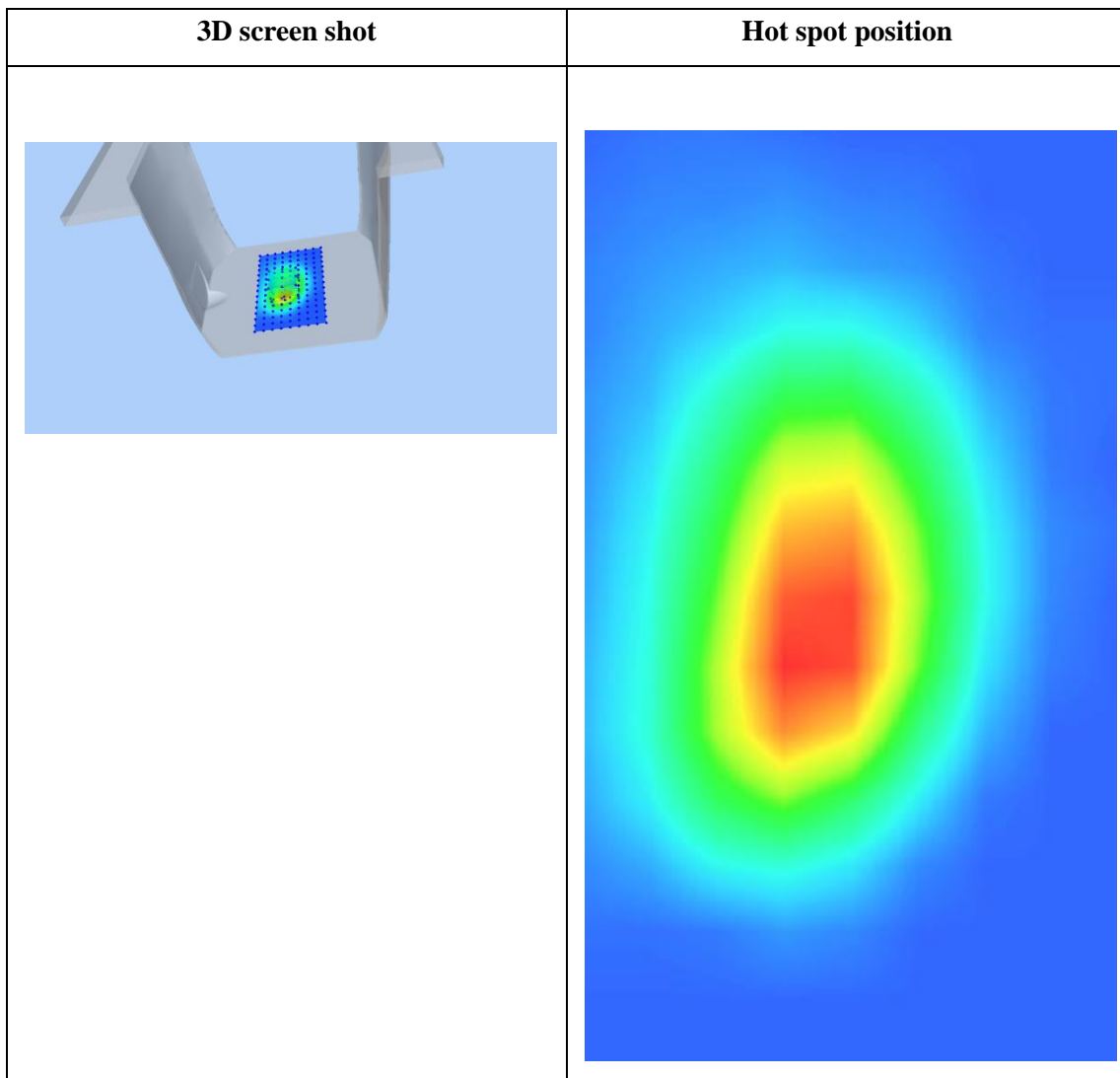
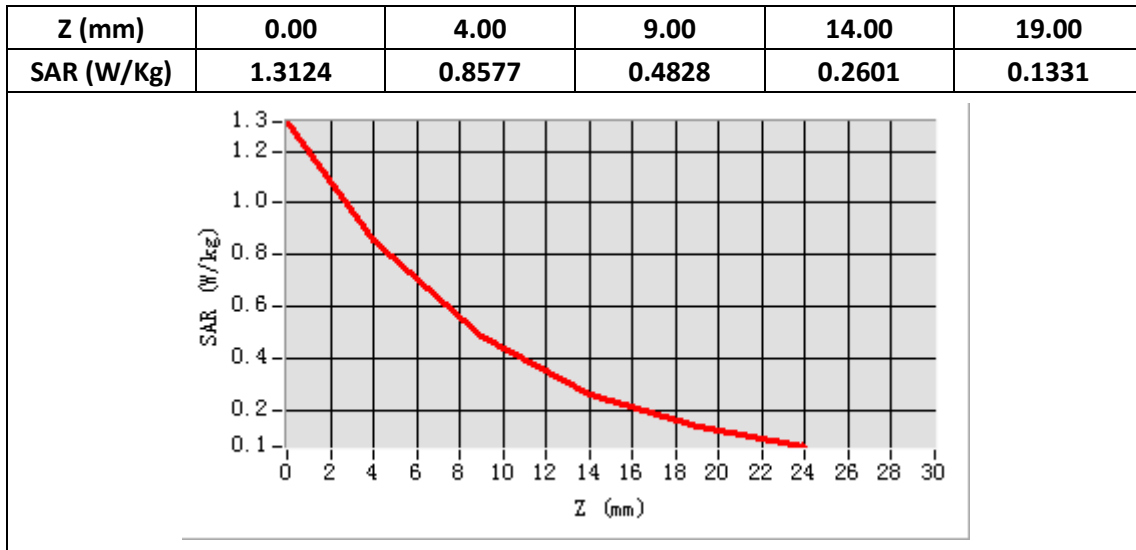
E-Field Probe	SATIMO SN_27/15_EPG0261
Frequency (MHz)	1880
Relative permittivity (real part)	53.40
Relative permittivity (imaginary)	14.40
Conductivity (S/m)	1.52
Variation (%)	-1.49
ConvF:	2.39



Maximum location: X=-6.00, Y=-9.00

SAR Peak: 1.32W/kg

SAR 10g (W/Kg)	0.396028
SAR 1g (W/Kg)	0.786441



Plot 13: LTE Band4, 20MHz, Left Cheek, Middle

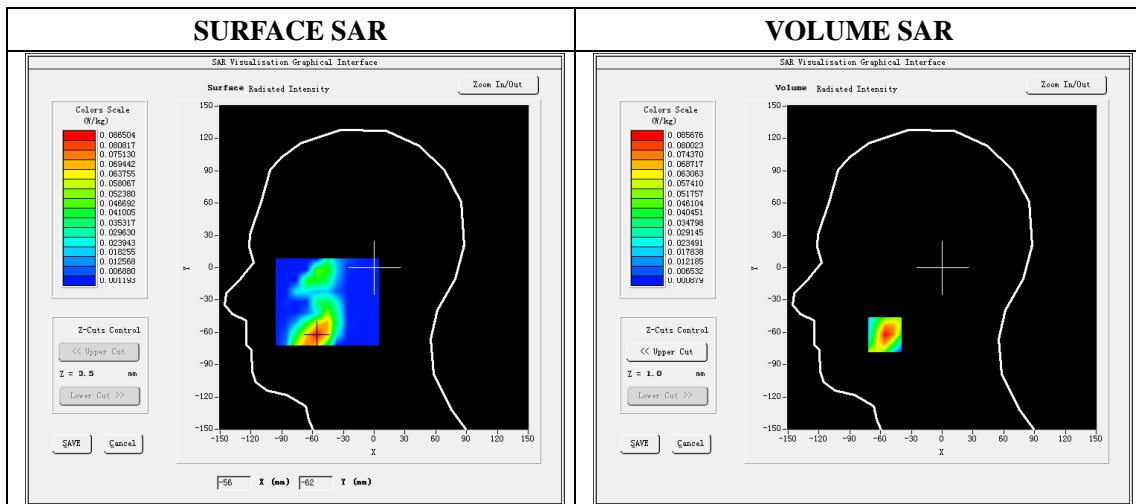
Type: Phone measurement
 Date of measurement: 12/17/2019
 Measurement duration: 22 minutes 14 econds
 Mobile Phone IMEI number: --

A. Experimental conditions.

Area Scan	dx=8mm dy=8mm
ZoomScan	5x5x7,dx=8mm dy=8mm dz=5mm
Phantom	Validation plane
Device Position	Left Cheek
Band	LTE Band 4
Channels	20175
Signal	LTE (Duty cycle: 1:1)

B. SAR Measurement Results

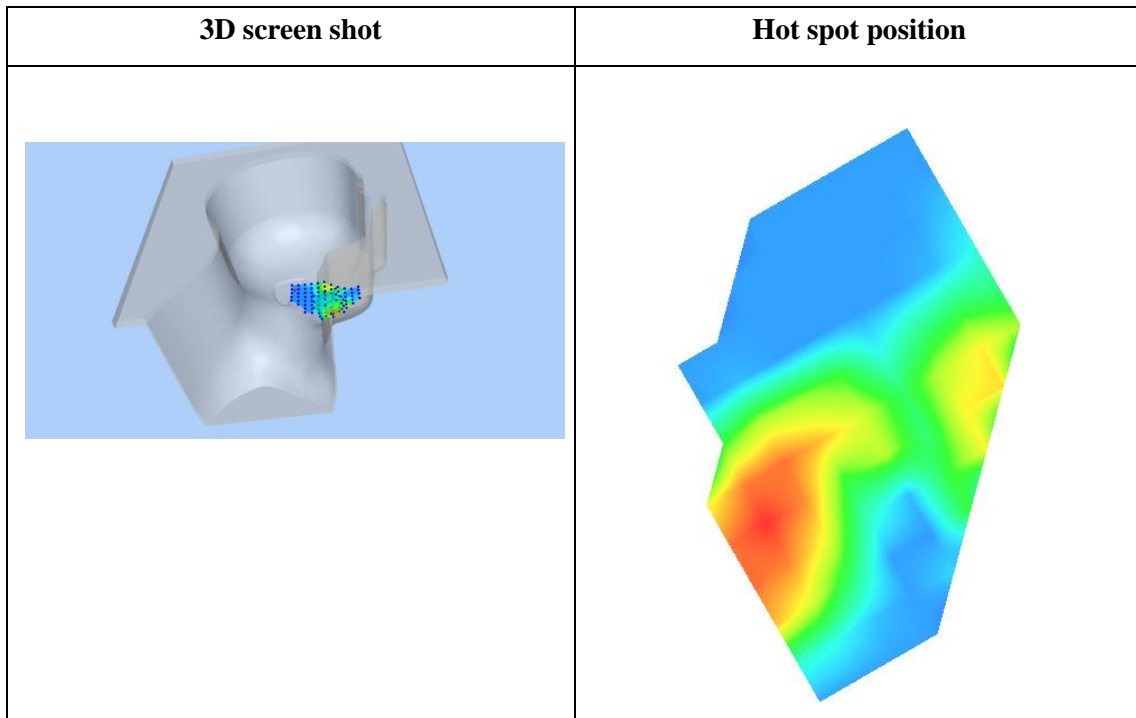
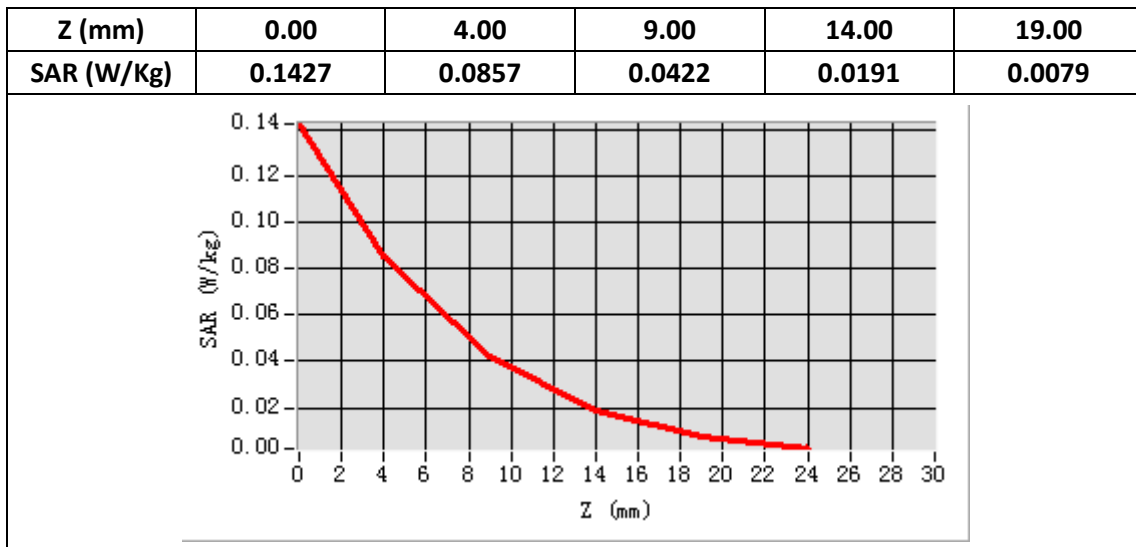
E-Field Probe	SATIMO SN_27/15_EPG0261
Frequency (MHz)	1732.5
Relative permittivity (real part)	40.46
Relative permittivity (imaginary)	14.20
Conductivity (S/m)	1.42
Variation (%)	2.20
ConvF:	2.14



Maximum location: X=-56.00, Y=-62.00

SAR Peak: 0.15 W/kg

SAR 10g (W/Kg)	0.039506
SAR 1g (W/Kg)	0.082536



Plot 14: LTE Band4, 20MHz, Edge C, Middle,10mm

Type: Phone measurement

Date of measurement: 12/17/2019

Measurement duration: 22 minutes 16 seconds

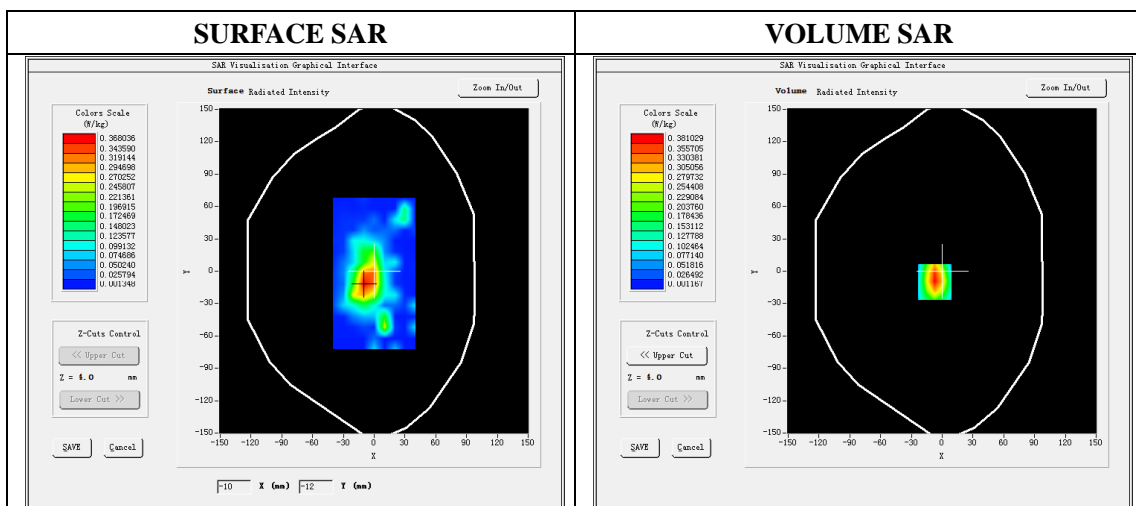
Mobile Phone IMEI number: --

A. Experimental conditions.

Area Scan	dx=8mm dy=8mm
ZoomScan	5x5x7,dx=8mm dy=8mm dz=5mm
Phantom	Validation plane
Device Position	Edge C
Band	LTE Band 4
Channels	20175
Signal	LTE (Duty cycle: 1:1)

B. SAR Measurement Results

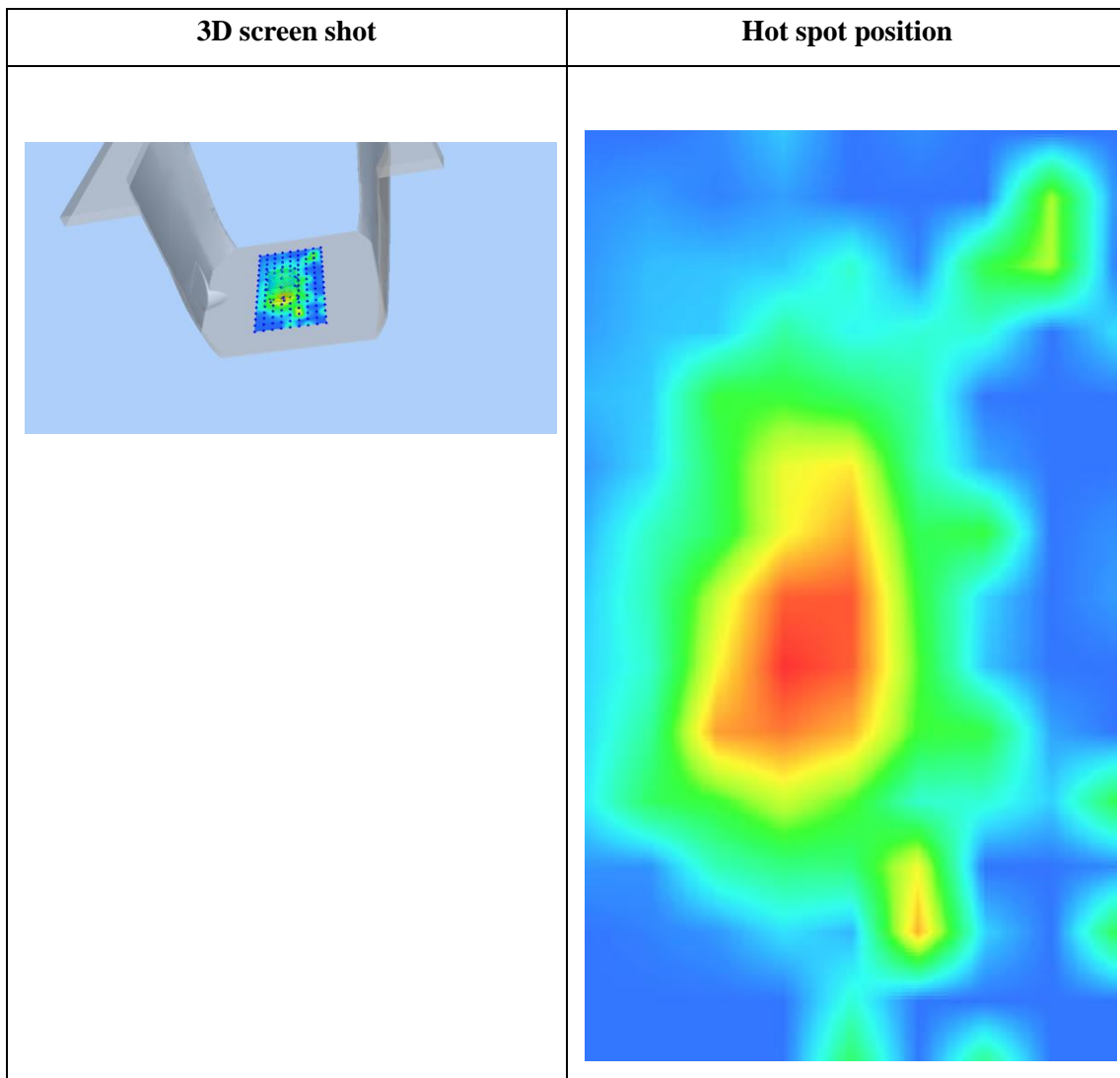
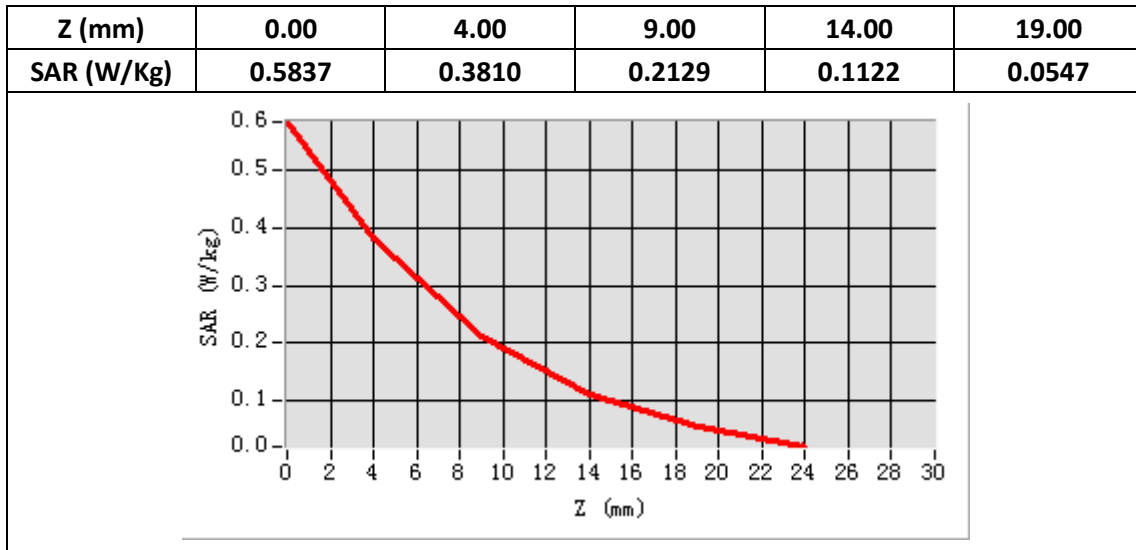
E-Field Probe	SATIMO SN_27/15_EPG0261
Frequency (MHz)	1732.5
Relative permittivity (real part)	53.47
Relative permittivity (imaginary)	15.30
Conductivity (S/m)	1.53
Variation (%)	-1.79
ConvF:	2.22



Maximum location: X=-7.00, Y=-10.00

SAR Peak: 0.60W/kg

SAR 10g (W/Kg)	0.174837
SAR 1g (W/Kg)	0.352005



Plot 15: LTE Band5, 10MHz,Right Cheek, Middle

Type: Phone measurement

Date of measurement: 12/16/2019

Measurement duration: 22 minutes 15 seconds

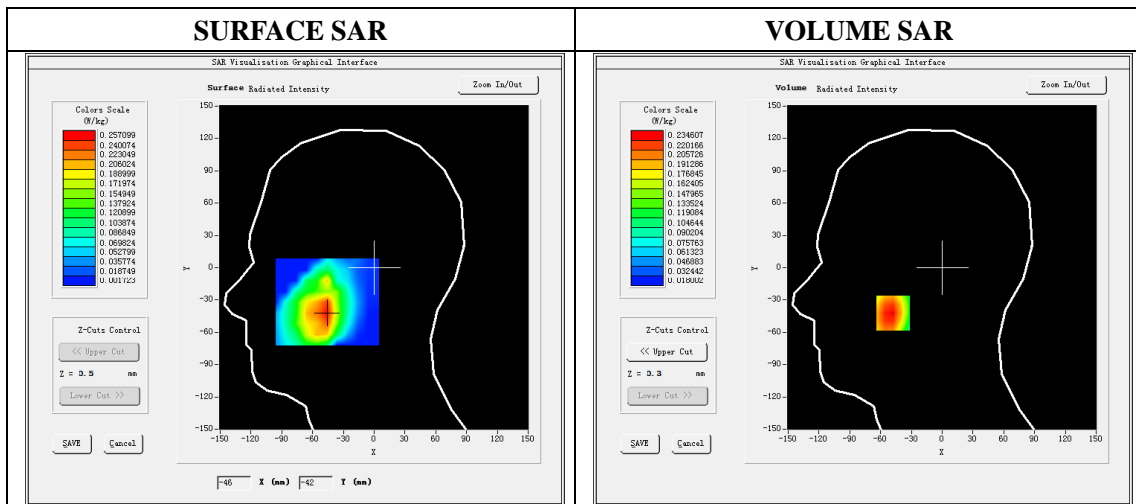
Mobile Phone IMEI number: --

A. Experimental conditions.

Area Scan	dx=8mm dy=8mm
ZoomScan	5x5x7,dx=8mm dy=8mm dz=5mm
Phantom	Validation plane
Device Position	Right Cheek
Band	LTE Band 5
Channels	20525
Signal	LTE (Duty cycle: 1:1)

B. SAR Measurement Results

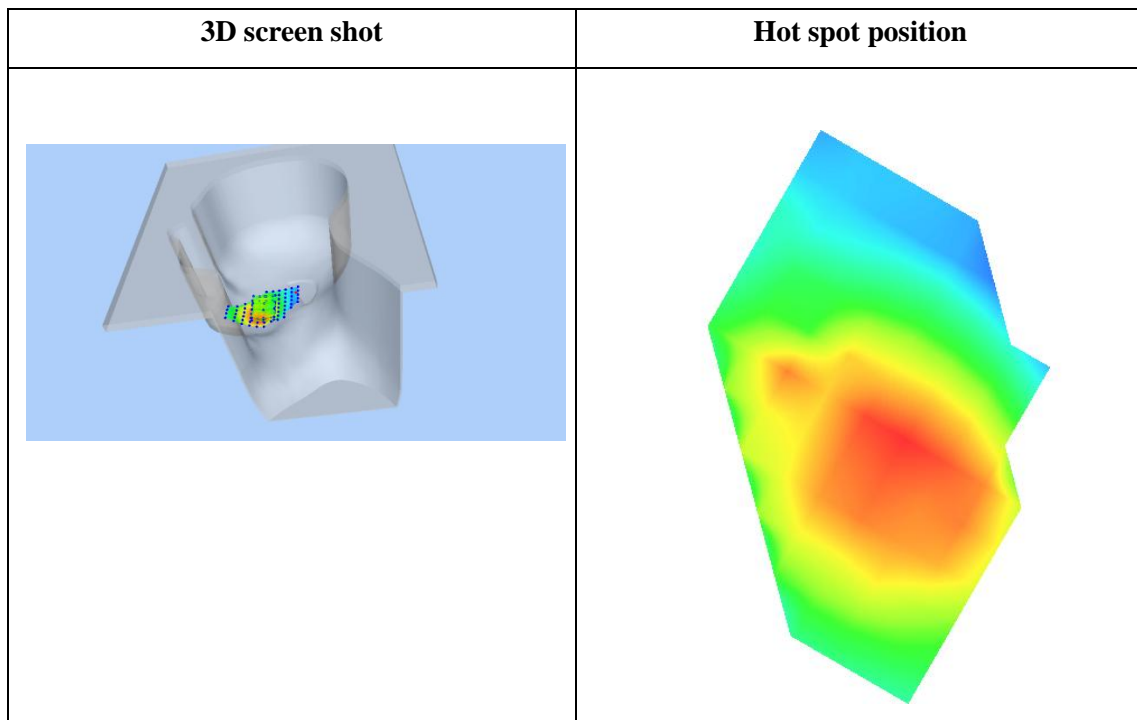
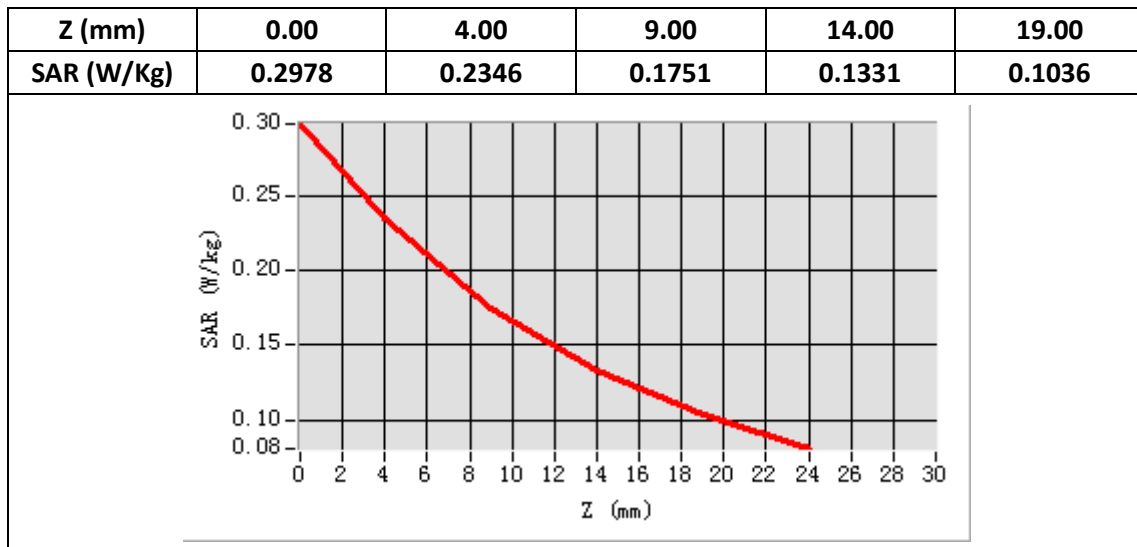
E-Field Probe	SATIMO SN_27/15_EPG0261
Frequency (MHz)	836.5
Relative permittivity (real part)	41.58
Relative permittivity (imaginary)	20.05
Conductivity (S/m)	0.93
Variation (%)	-3.82
ConvF:	1.92



Maximum location: X=-48.00, Y=-42.00

SAR Peak: 0.30 W/kg

SAR 10g (W/Kg)	0.163050
SAR 1g (W/Kg)	0.227623



Plot 16: LTE Band5, 10MHz, Back, Middle,10mm

Type: Phone measurement

Date of measurement: 12/16/2019

Measurement duration: 22 minutes 18 seconds

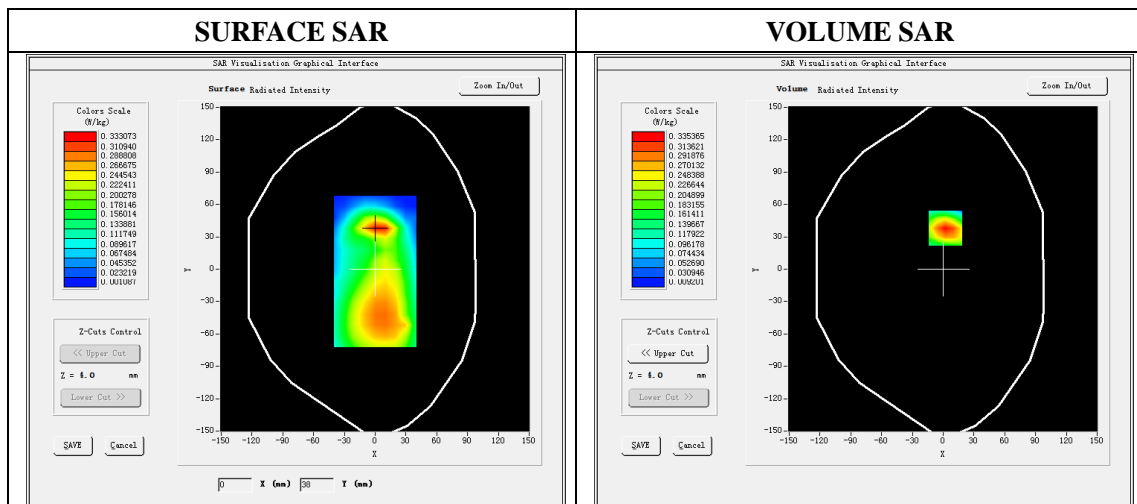
Mobile Phone IMEI number: --

A. Experimental conditions.

Area Scan	dx=8mm dy=8mm
ZoomScan	5x5x7,dx=8mm dy=8mm dz=5mm
Phantom	Validation plane
Device Position	Back
Band	LTE Band 5
Channels	20525
Signal	LTE (Duty cycle: 1:1)

B. SAR Measurement Results

E-Field Probe	SATIMO SN_27/15_EPG0261
Frequency (MHz)	836.5
Relative permittivity (real part)	55.28
Relative permittivity (imaginary)	21.34
Conductivity (S/m)	0.99
Variation (%)	-3.13
ConvF:	1.99

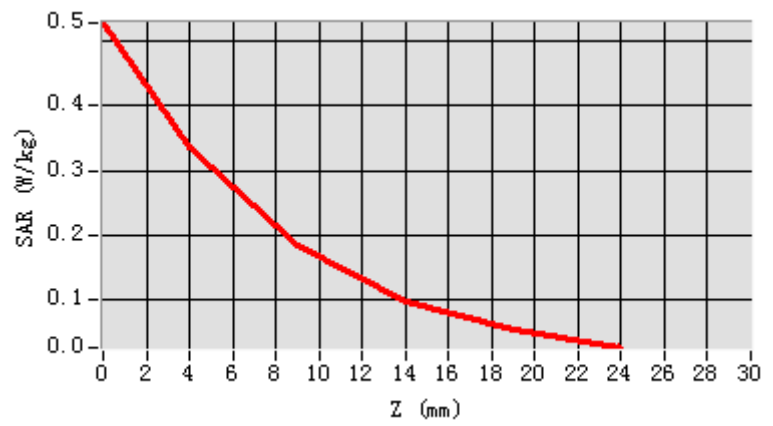


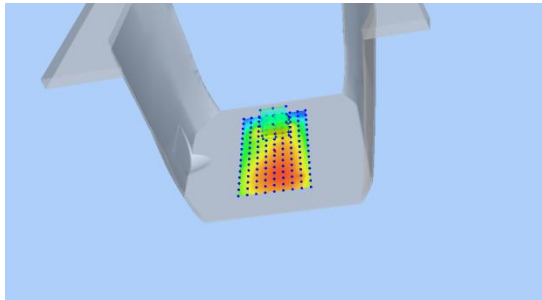
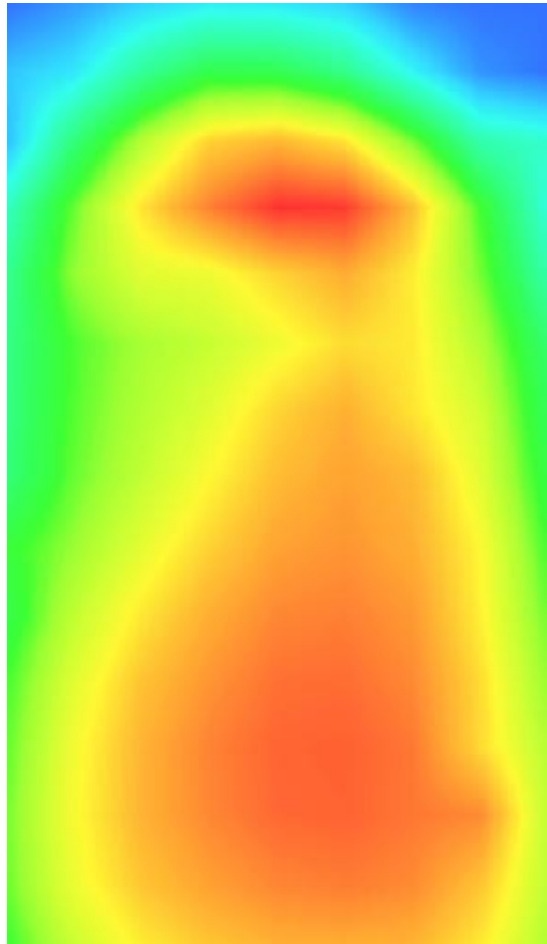
Maximum location: X=2.00, Y=38.00

SAR Peak: 0.53W/kg

SAR 10g (W/Kg)	0.167179
SAR 1g (W/Kg)	0.318071

Z (mm)	0.00	4.00	9.00	14.00	19.00
SAR (W/Kg)	0.5283	0.3354	0.1830	0.0979	0.0525



3D screen shot	Hot spot position
	

Plot 17: LTE Band7, 20MHz, Left Cheek, Middle

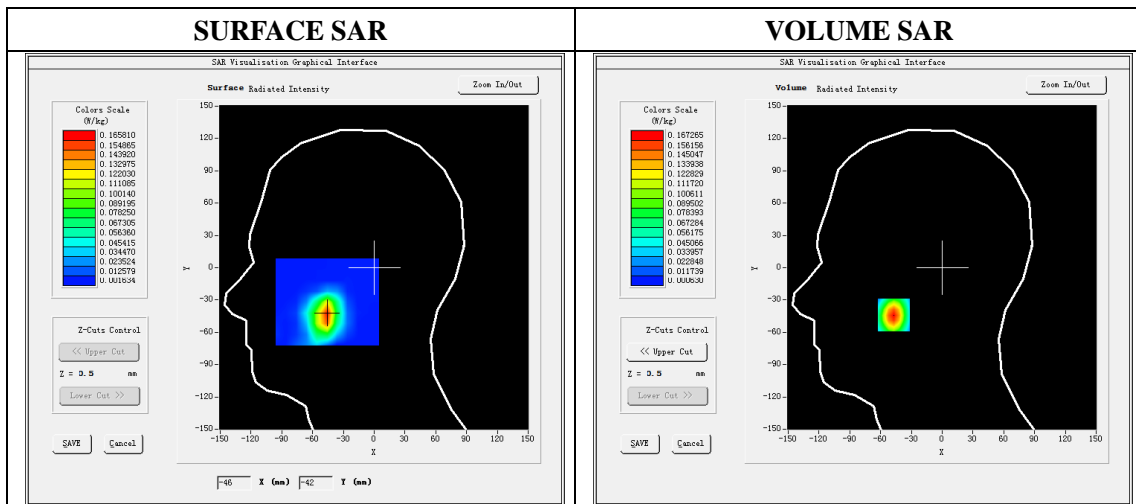
Type: Phone measurement
 Date of measurement: 12/20/2019
 Measurement duration: 22 minutes 21 seconds
 Mobile Phone IMEI number: --

A. Experimental conditions.

Area Scan	dx=5mm,dy=5mm
ZoomScan	7x7x8,dx=5mm dy=5mm dz=4mm
Phantom	Validation plane
Device Position	Left Cheek
Band	LTE Band 7
Channels	21350
Signal	LTE (Duty cycle: 1:1)

B. SAR Measurement Results

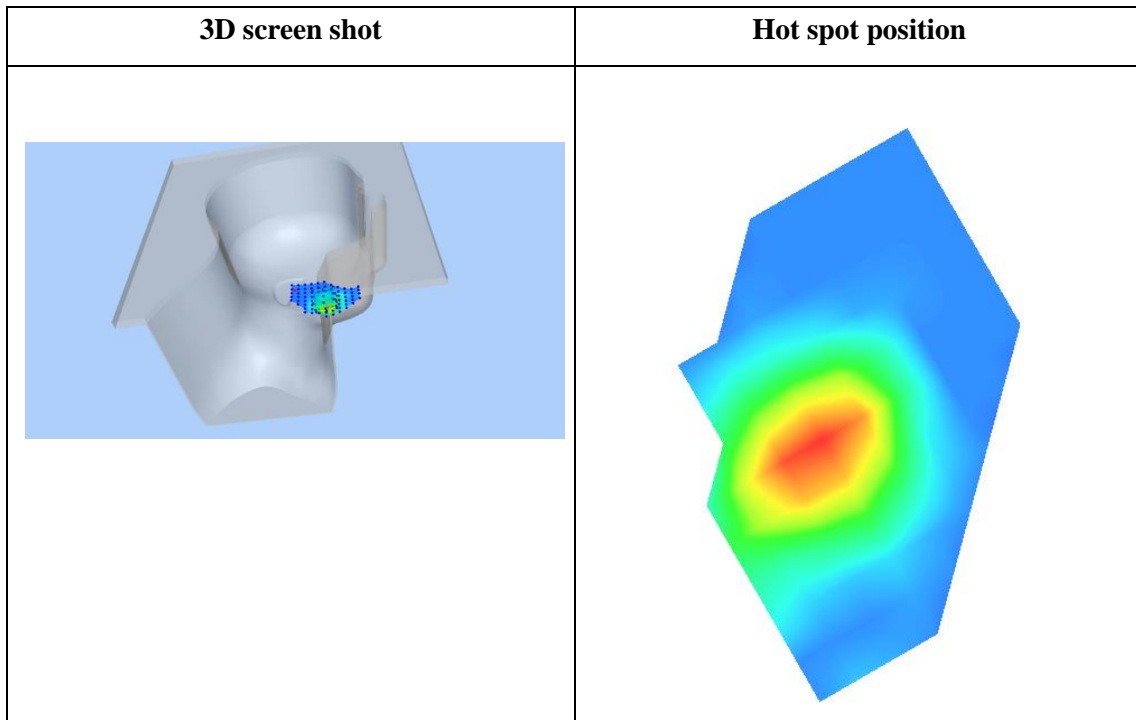
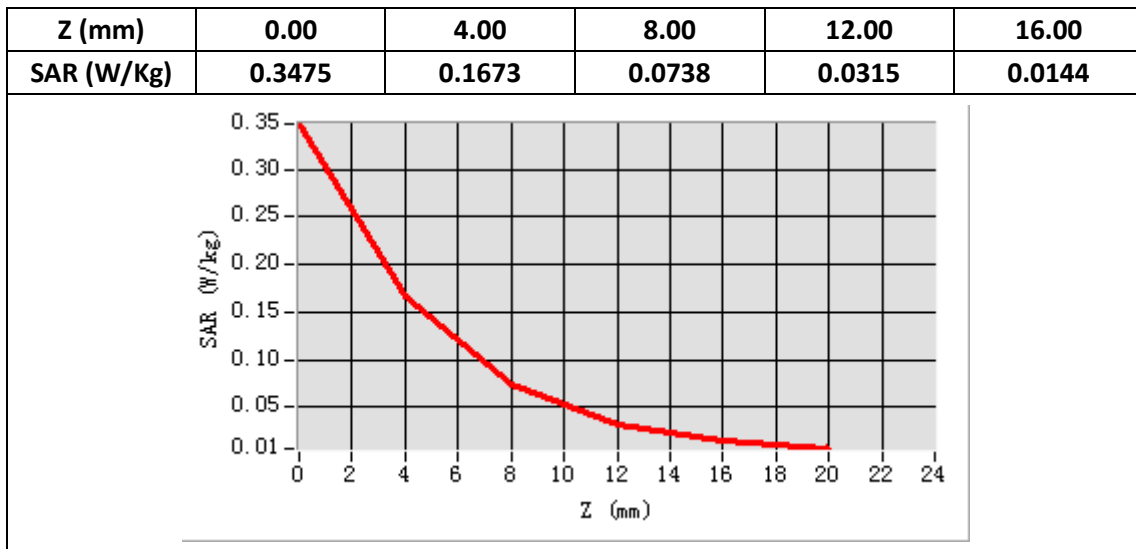
E-Field Probe	SATIMO SN_27/15_EPG0261
Frequency (MHz)	2560
Relative permittivity (real part)	39.14
Relative permittivity (imaginary)	13.71
Conductivity (S/m)	1.98
Variation (%)	1.40
ConvF:	2.35



Maximum location: X=-47.00 Y=-44.00

SAR Peak: 0.35W/kg

SAR 10g (W/Kg)	0.064755
SAR 1g (W/Kg)	0.154951



Plot 18: LTE Band7, 20MHz, Back, Middle,15mm

Type: Phone measurement

Date of measurement: 12/20/2019

Measurement duration: 22 minutes 17 seconds

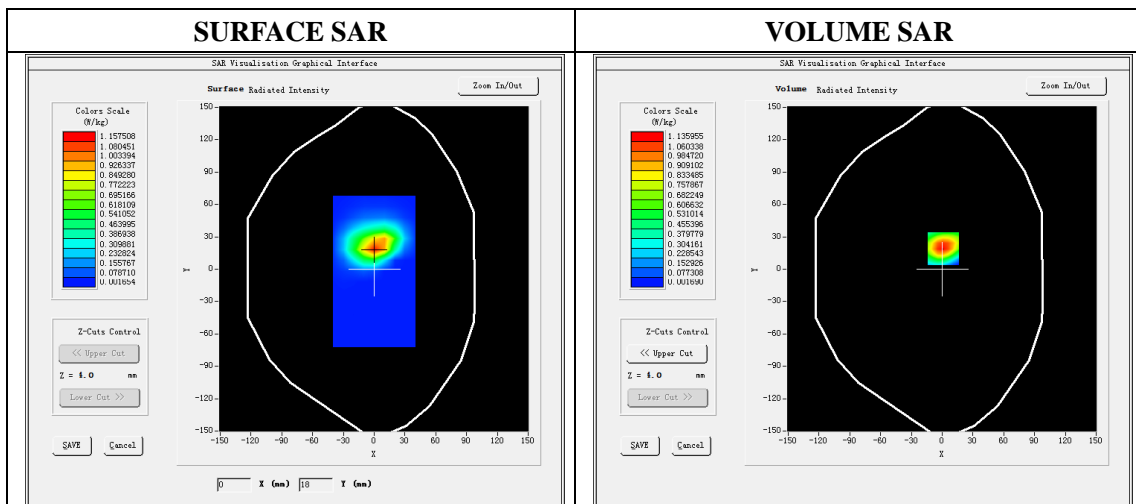
Mobile Phone IMEI number: --

A. Experimental conditions.

Area Scan	dx=5mm,dy=5mm
ZoomScan	7x7x8,dx=5mm dy=5mm dz=4mm
Phantom	Validation plane
Device Position	Back
Band	LTE Band 7
Channels	21350
Signal	LTE (Duty cycle: 1:1)

B. SAR Measurement Results

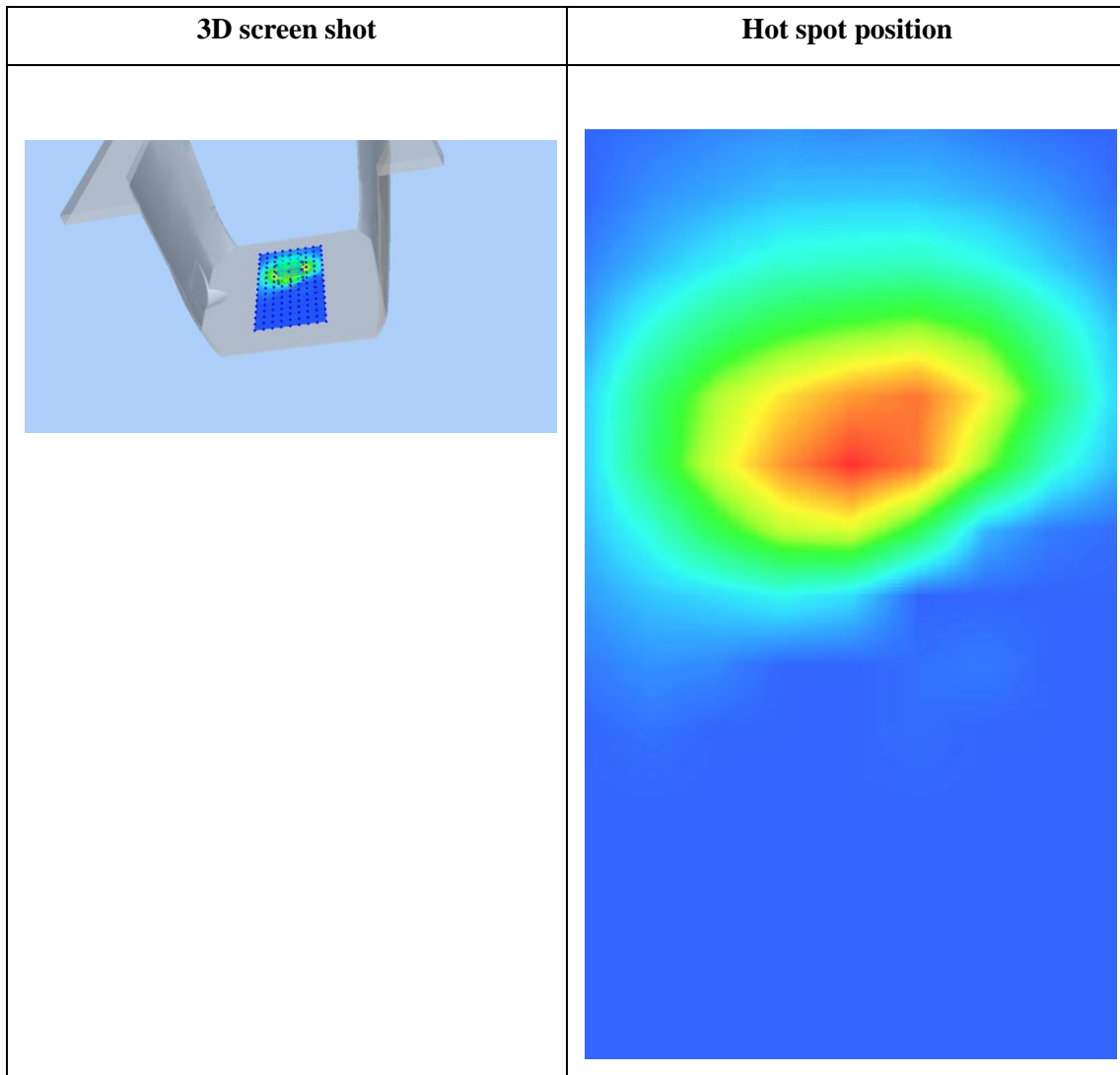
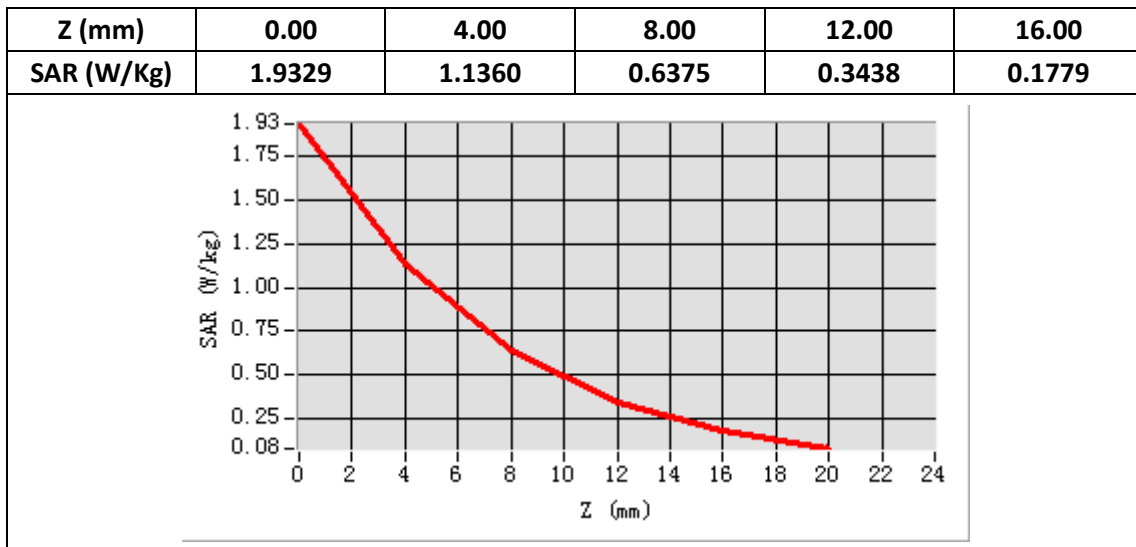
E-Field Probe	SATIMO SN_27/15_EPG0261
Frequency (MHz)	2560
Relative permittivity (real part)	52.60
Relative permittivity (imaginary)	15.16
Conductivity (S/m)	2.19
Variation (%)	-4.19
ConvF:	2.43



Maximum location: X=1.00 Y=19.00

SAR Peak: 1.94 W/kg

SAR 10g (W/Kg)	0.485955
SAR 1g (W/Kg)	1.040068



Plot 19: LTE Band26, 10MHz,Right Cheek, Middle

Type: Phone measurement

Date of measurement: 12/16/2019

Measurement duration: 22 minutes 19 seconds

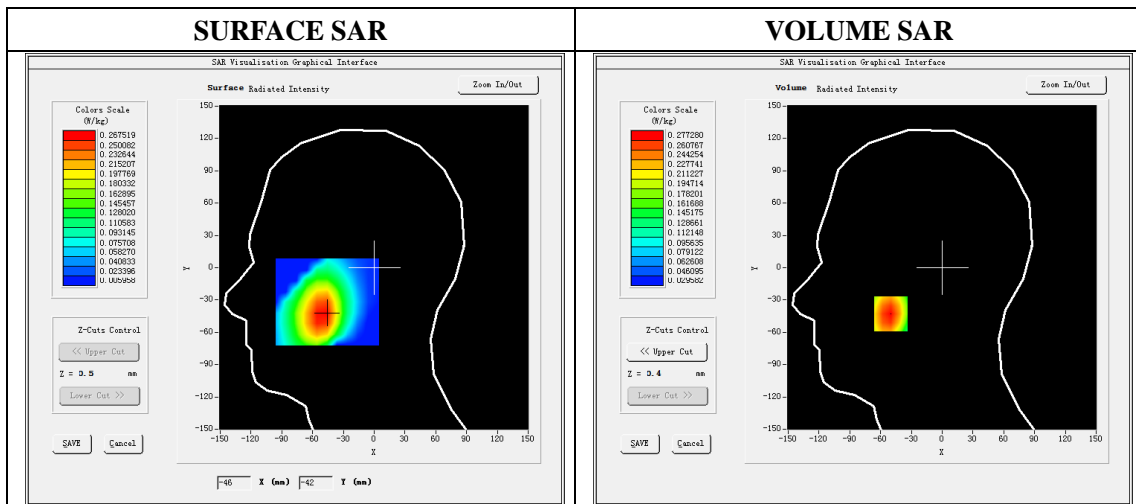
Mobile Phone IMEI number: --

A. Experimental conditions.

Area Scan	dx=8mm dy=8mm
ZoomScan	5x5x7,dx=8mm dy=8mm dz=5mm
Phantom	Validation plane
Device Position	Right Cheek
Band	LTE Band 26
Channels	26865
Signal	LTE (Duty cycle: 1:1)

B. SAR Measurement Results

E-Field Probe	SATIMO SN_27/15_EPG0261
Frequency (MHz)	831.5
Relative permittivity (real part)	41.58
Relative permittivity (imaginary)	20.05
Conductivity (S/m)	0.93
Variation (%)	-3.54
ConvF:	1.92

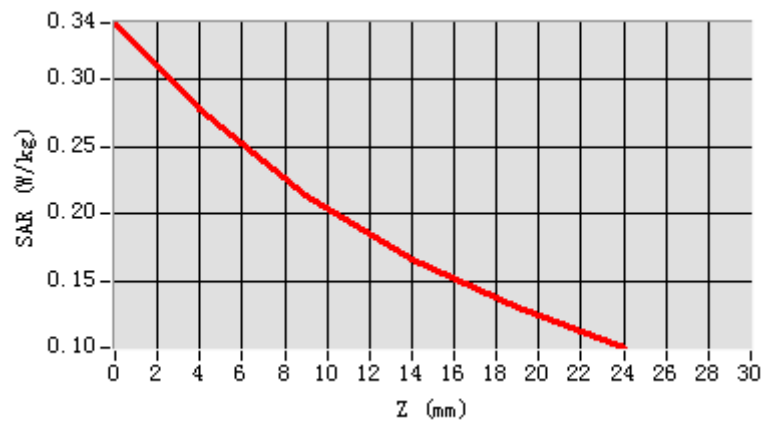


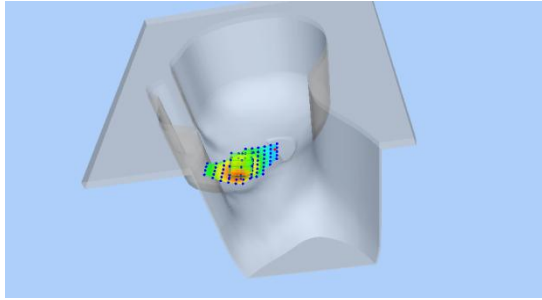
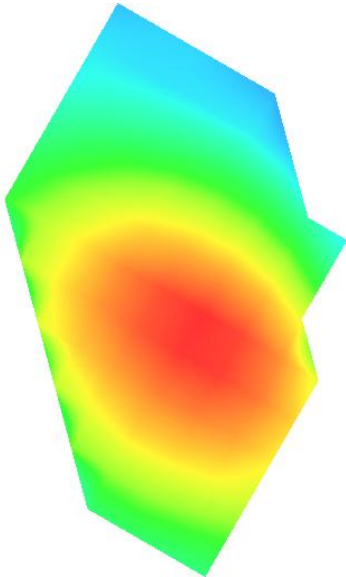
Maximum location: X=-50.00, Y=-43.00

SAR Peak: 0.34 W/kg

SAR 10g (W/Kg)	0.193621
SAR 1g (W/Kg)	0.266767

Z (mm)	0.00	4.00	9.00	14.00	19.00
SAR (W/Kg)	0.3411	0.2773	0.2142	0.1667	0.1308



3D screen shot	Hot spot position
	

Plot 20: LTE Band26, 10MHz, Back, Middle,10mm

Type: Phone measurement

Date of measurement: 12/16/2019

Measurement duration: 22 minutes 20 seconds

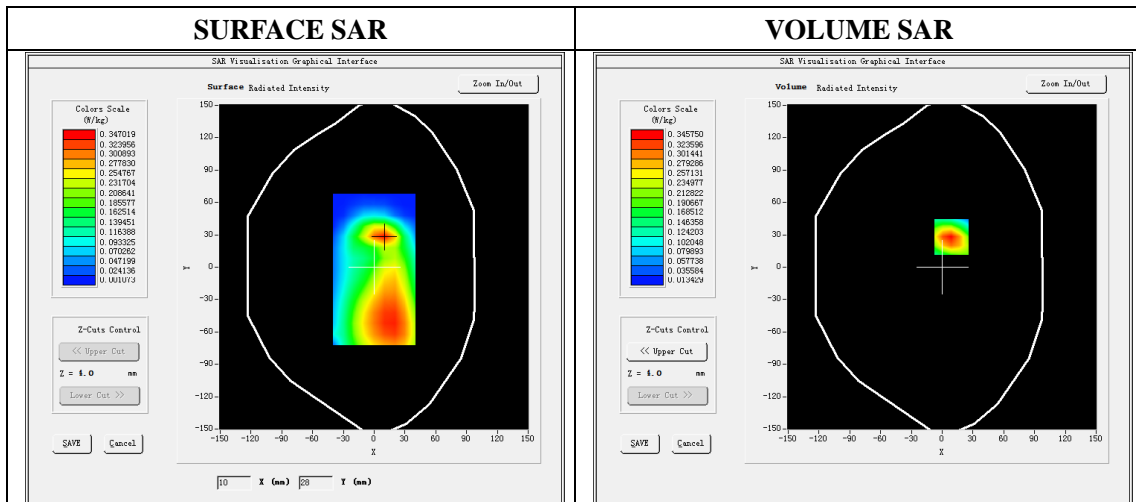
Mobile Phone IMEI number: --

A. Experimental conditions.

Area Scan	dx=8mm dy=8mm
ZoomScan	5x5x7,dx=8mm dy=8mm dz=5mm
Phantom	Validation plane
Device Position	Back
Band	LTE Band 26
Channels	26865
Signal	LTE (Duty cycle: 1:1)

B. SAR Measurement Results

E-Field Probe	SATIMO SN_27/15_EPG0261
Frequency (MHz)	831.5
Relative permittivity (real part)	55.28
Relative permittivity (imaginary)	21.34
Conductivity (S/m)	0.99
Variation (%)	0.44
ConvF:	1.99

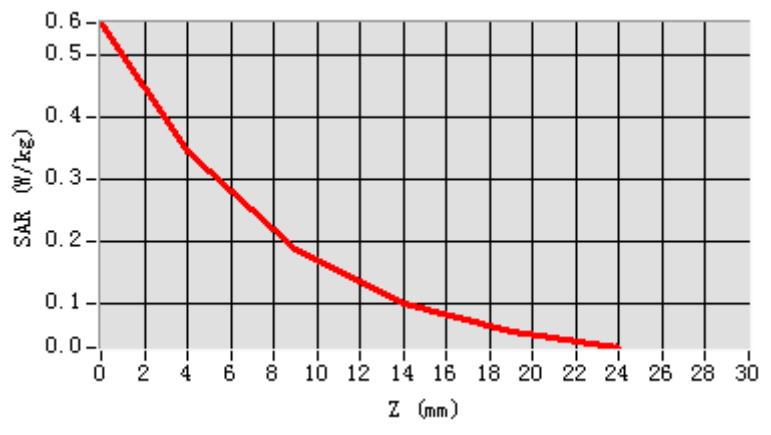


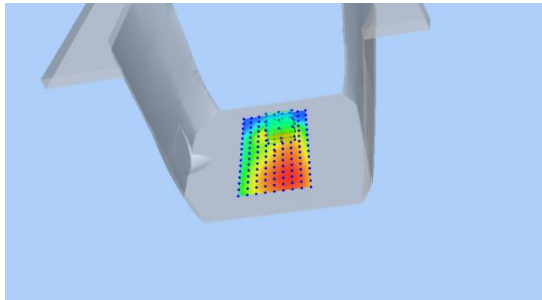
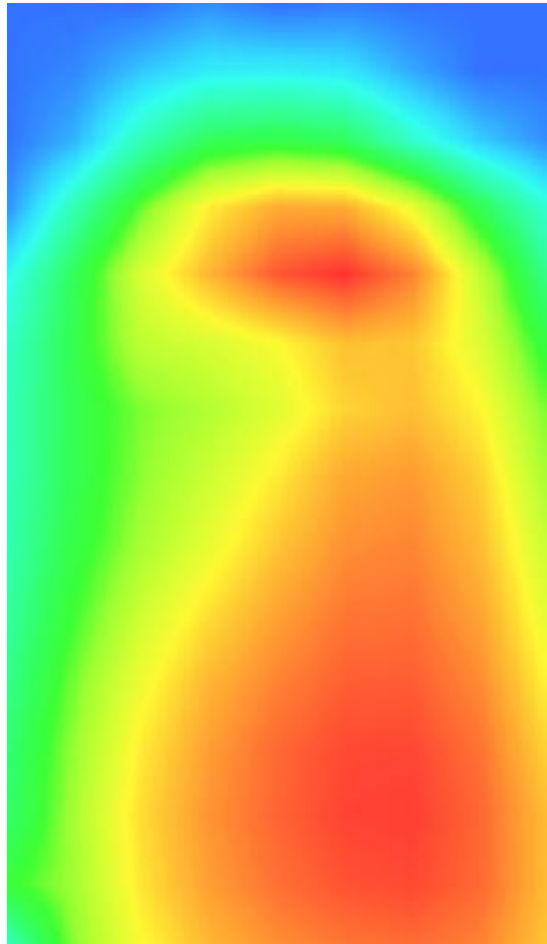
Maximum location: X=9.00, Y=28.00

SAR Peak: 0.56W/kg

SAR 10g (W/Kg)	0.174458
SAR 1g (W/Kg)	0.330580

Z (mm)	0.00	4.00	9.00	14.00	19.00
SAR (W/Kg)	0.5519	0.3458	0.1858	0.0987	0.0537



3D screen shot	Hot spot position
	

Plot 21: LTE Band66, 20MHz,Left Cheek, Middle

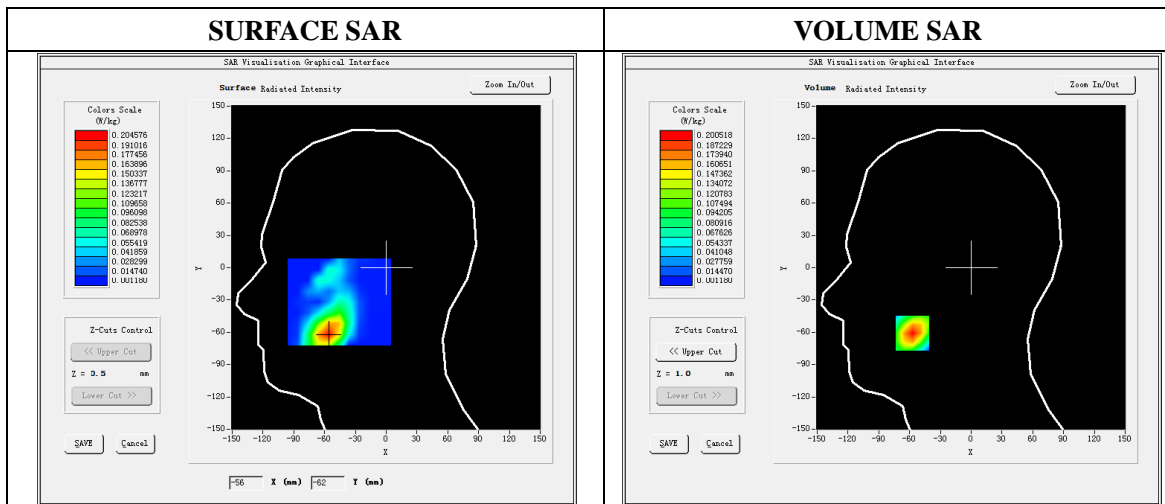
Type: Phone measurement
 Date of measurement: 12/17/2019
 Measurement duration: 22 minutes 22 seconds
 Mobile Phone IMEI number: --

A. Experimental conditions.

Area Scan	dx=8mm dy=8mm
ZoomScan	5x5x7,dx=8mm dy=8mm dz=5mm
Phantom	Validation plane
Device Position	Left Cheek
Band	LTE Band 66
Channels	132197
Signal	LTE (Duty cycle: 1:1)

B. SAR Measurement Results

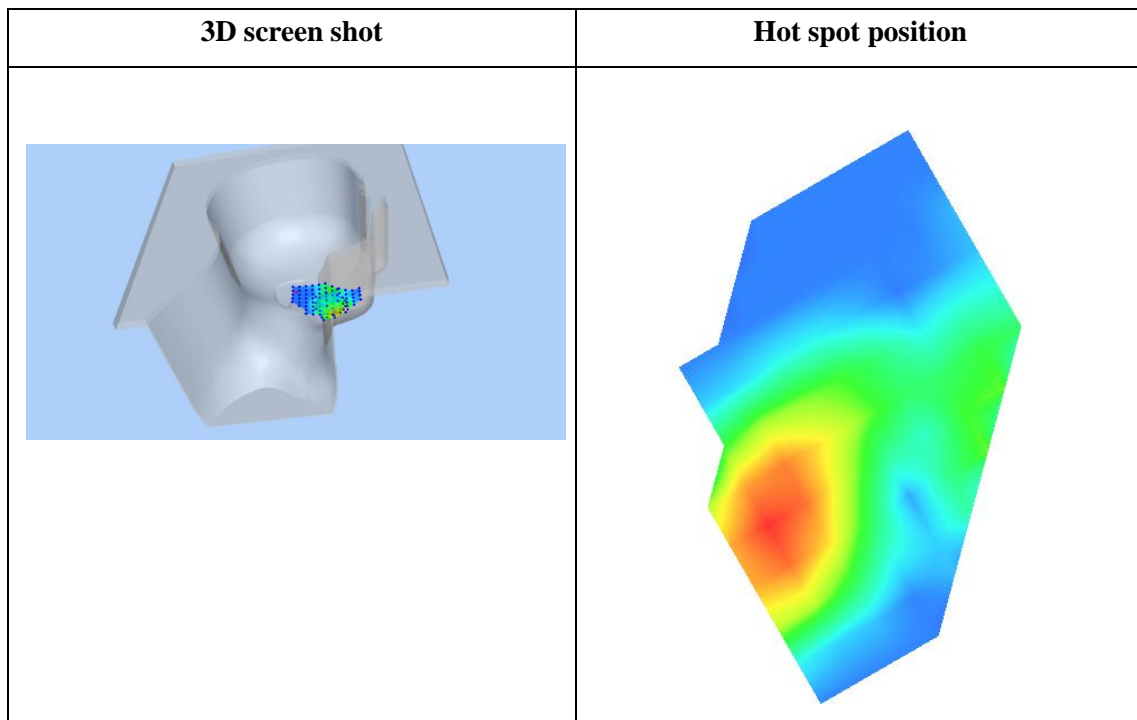
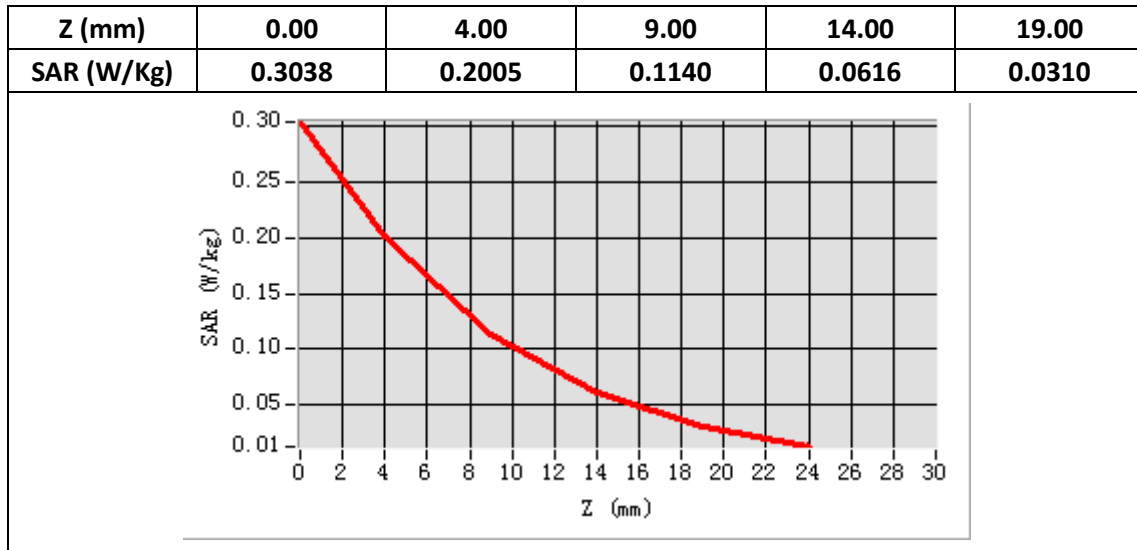
E-Field Probe	SATIMO SN_27/15_EPG0261
Frequency (MHz)	1732.5
Relative permittivity (real part)	40.46
Relative permittivity (imaginary)	14.20
Conductivity (S/m)	1.42
Variation (%)	3.05
ConvF:	2.14



Maximum location: X=-57.00, Y=-61.00

SAR Peak: 0.30W/kg

SAR 10g (W/Kg)	0.096610
SAR 1g (W/Kg)	0.188598



Plot 22: LTE Band66, 20MHz, Back, Middle,10mm

Type: Phone measurement

Date of measurement: 12/17/2019

Measurement duration: 22 minutes 25 seconds

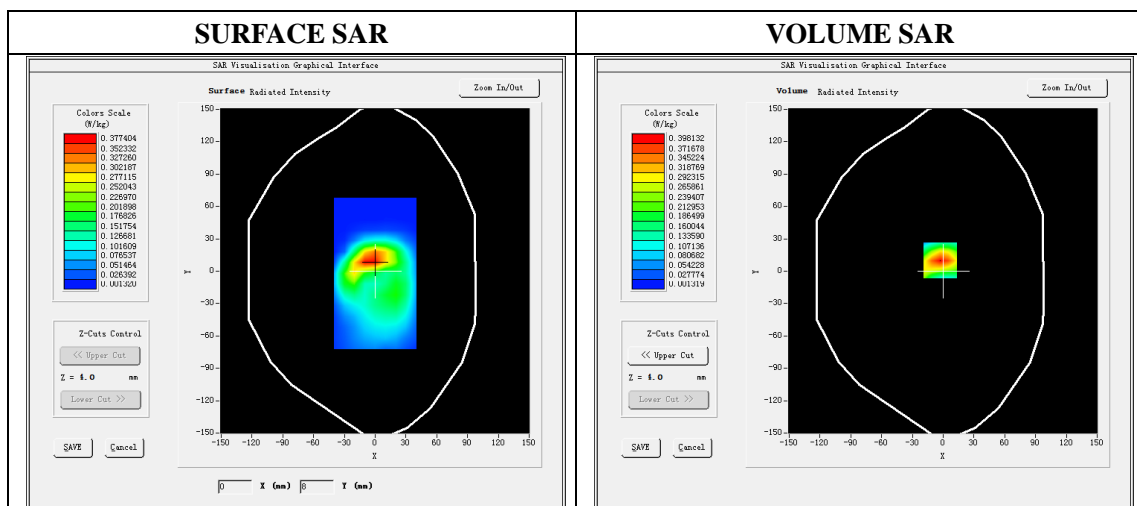
Mobile Phone IMEI number: --

A. Experimental conditions.

Area Scan	dx=8mm dy=8mm
ZoomScan	5x5x7,dx=8mm dy=8mm dz=5mm
Phantom	Validation plane
Device Position	Back
Band	LTE Band 66
Channels	132197
Signal	LTE (Duty cycle: 1:1)

B. SAR Measurement Results

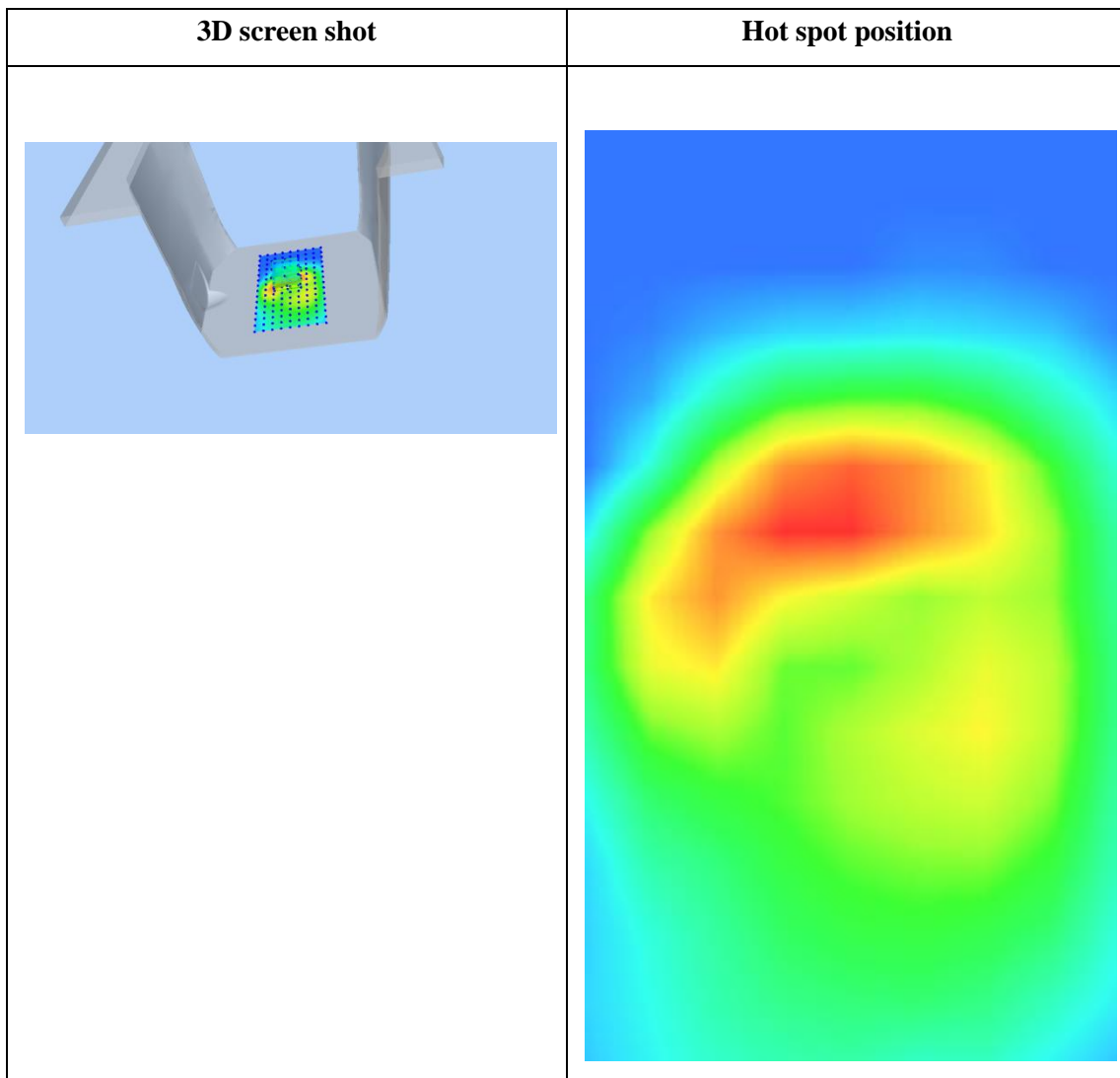
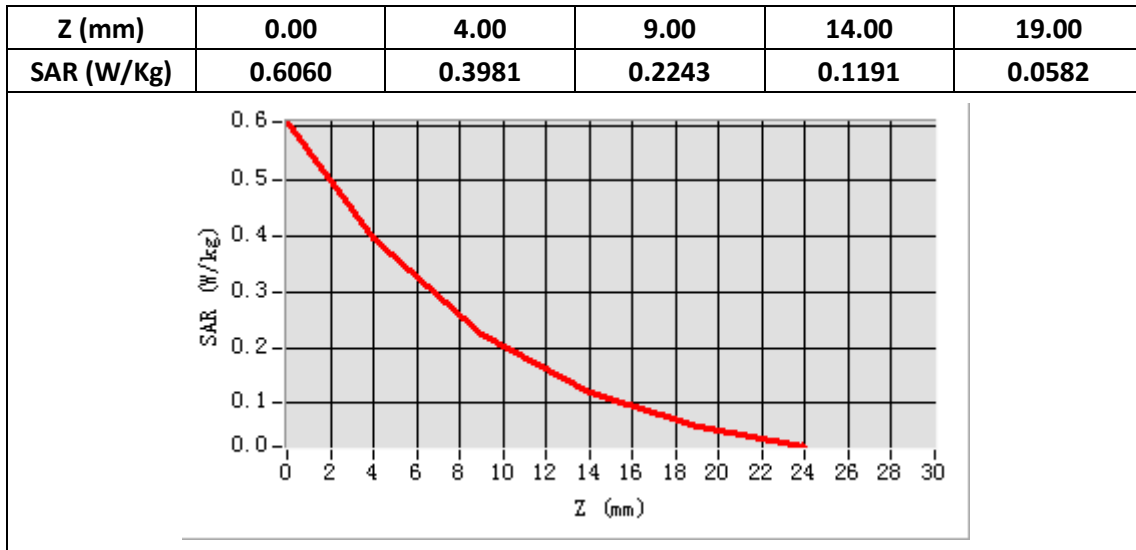
E-Field Probe	SATIMO SN_27/15_EPG0261
Frequency (MHz)	1732.5
Relative permittivity (real part)	53.47
Relative permittivity (imaginary)	15.30
Conductivity (S/m)	1.53
Variation (%)	1.41
ConvF:	2.22



Maximum location: X=-3.00, Y=10.00

SAR Peak: 0.61W/kg

SAR 10g (W/Kg)	0.187382
SAR 1g (W/Kg)	0.365518



Plot 23: Wi-Fi 802.11b Left Cheek, Middle

Type: Phone measurement

Date of measurement: 12/19/2019

Measurement duration: 22 minutes 24 seconds

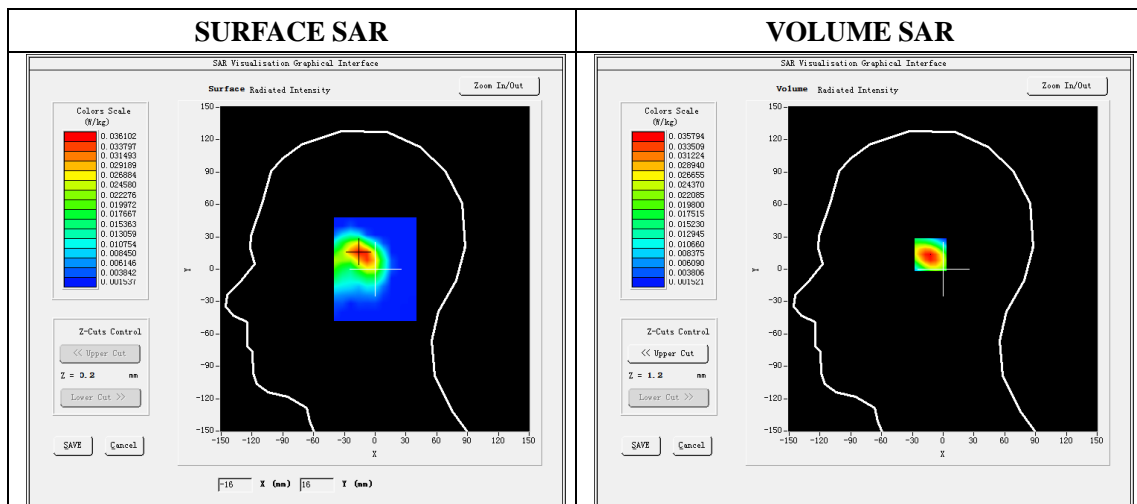
Mobile Phone IMEI number: --

A. Experimental conditions.

Area Scan	dx=5mm,dy=5mm
ZoomScan	7x7x8,dx=5mm dy=5mm dz=4mm
Phantom	Validation plane
Device Position	Left Cheek
Band	WIFI
Channels	6
Signal	DSSS (Duty cycle: 1:1)

B. SAR Measurement Results

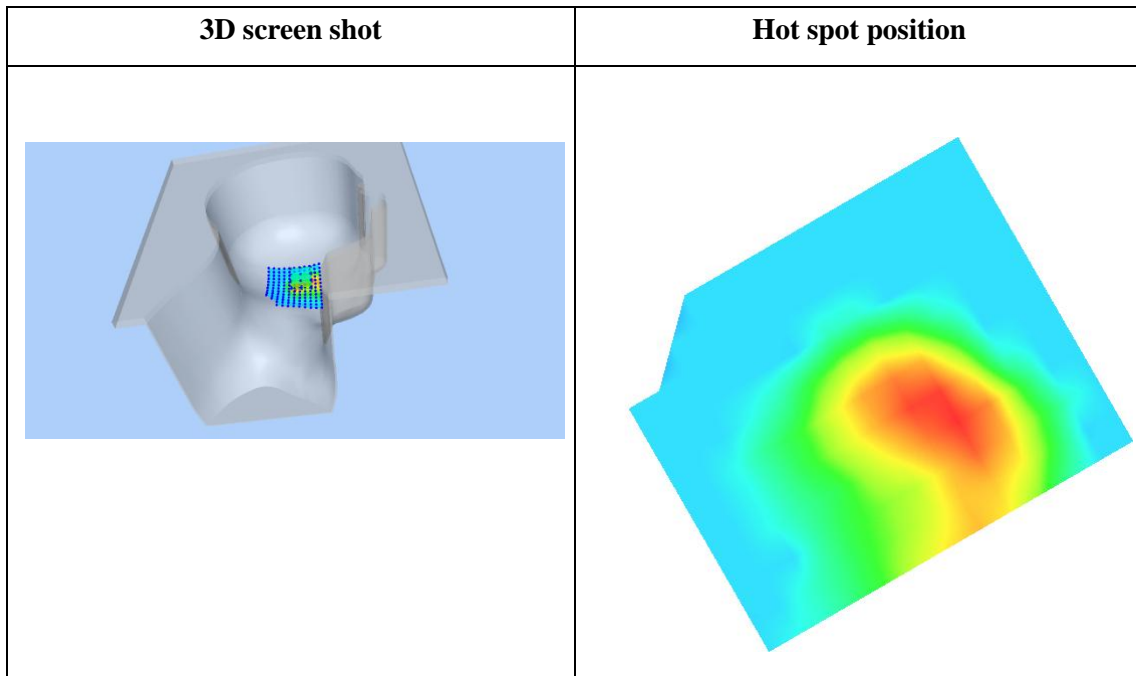
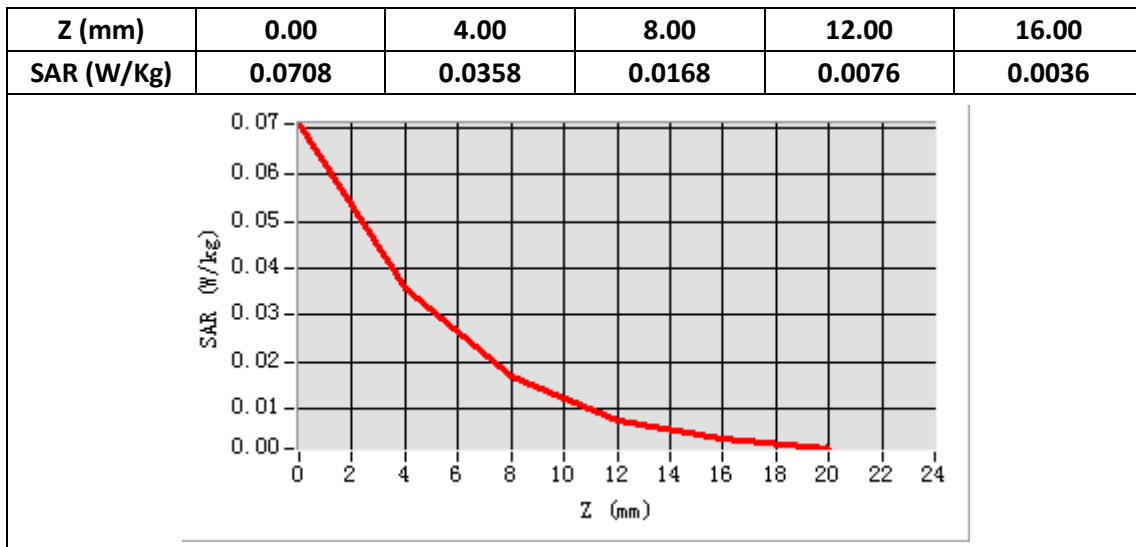
E-Field Probe	SATIMO SN_27/15_EPG0261
Frequency (MHz)	2437
Relative permittivity (real part)	39.31
Relative permittivity (imaginary)	13.37
Conductivity (S/m)	1.82
Variation (%)	-1.71
ConvF:	2.37



Maximum location: X=-11.00 Y=14.00

SAR Peak: 0.07 W/kg

SAR 10g (W/Kg)	0.015339
SAR 1g (W/Kg)	0.033661



Plot 24: Wi-Fi 802.11b, Face ,Middle, 15mm

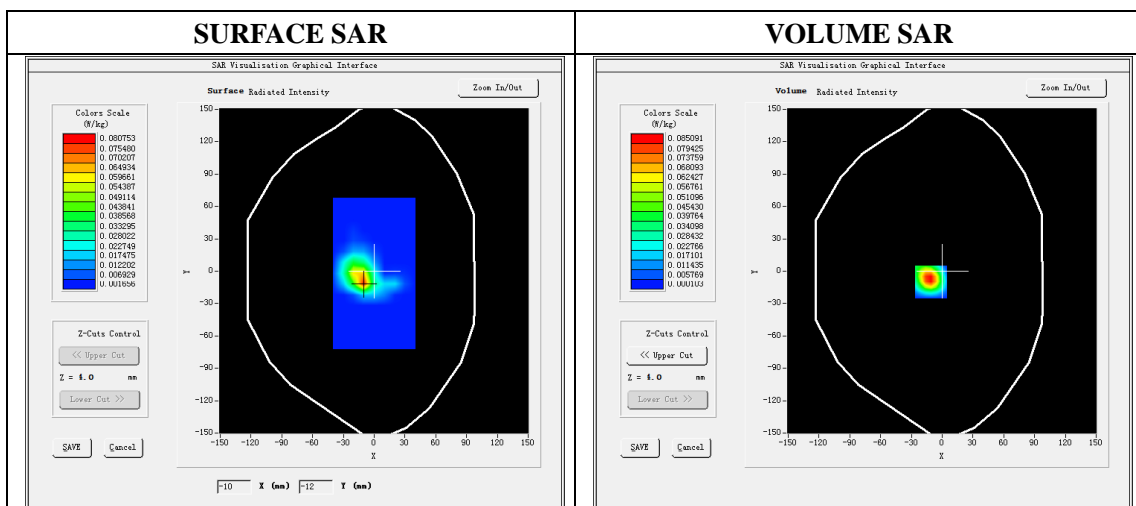
Type: Phone measurement
 Date of measurement: 12/19/2019
 Measurement duration: 22 minutes 26 seconds
 Mobile Phone IMEI number: --

A. Experimental conditions.

Area Scan	dx=5mm,dy=5mm
ZoomScan	7x7x8,dx=5mm dy=5mm dz=4mm
Phantom	Validation plane
Device Position	Face
Band	WIFI
Channels	6
Signal	DSSS (Duty cycle: 1:1)

B. SAR Measurement Results

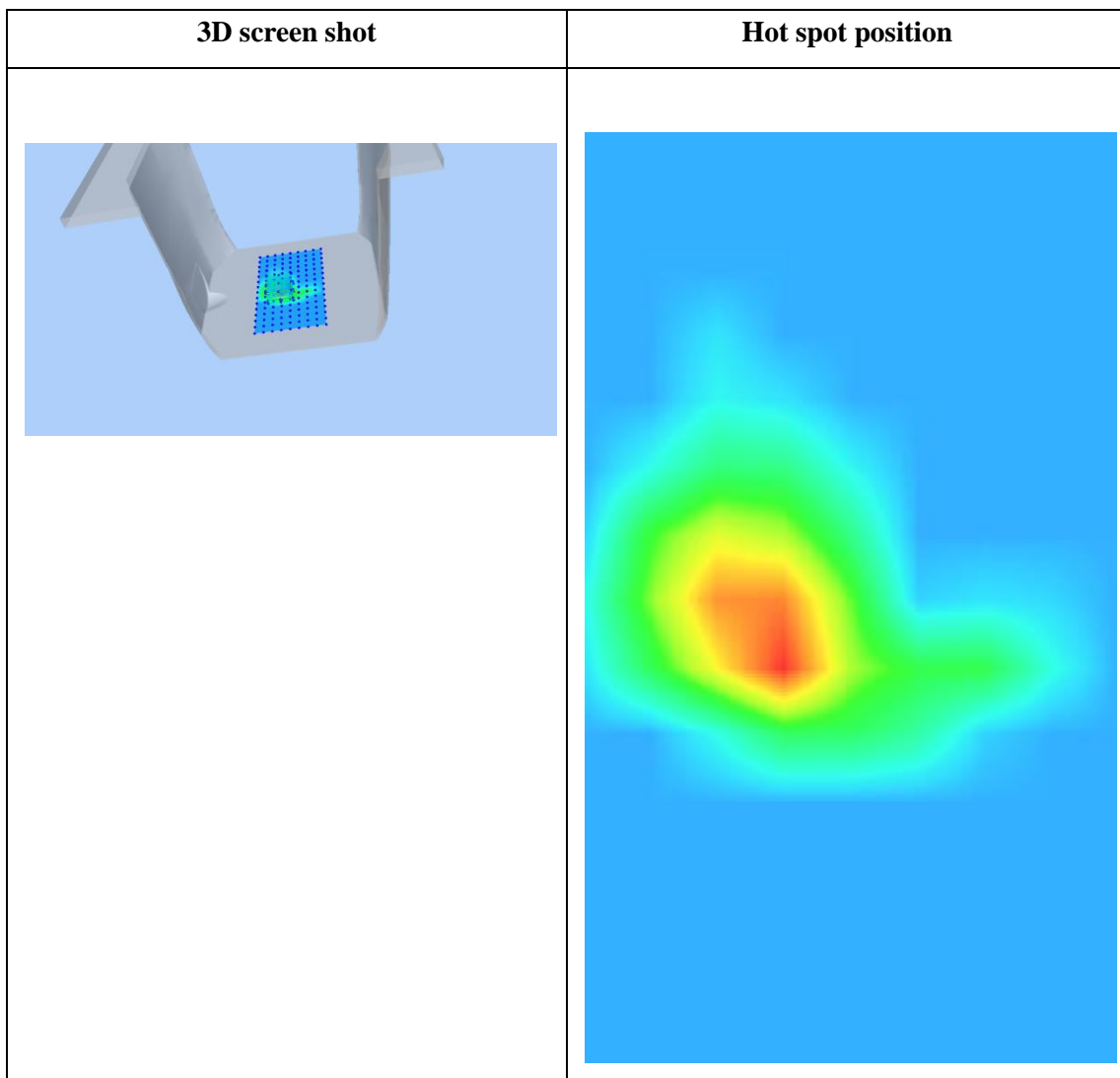
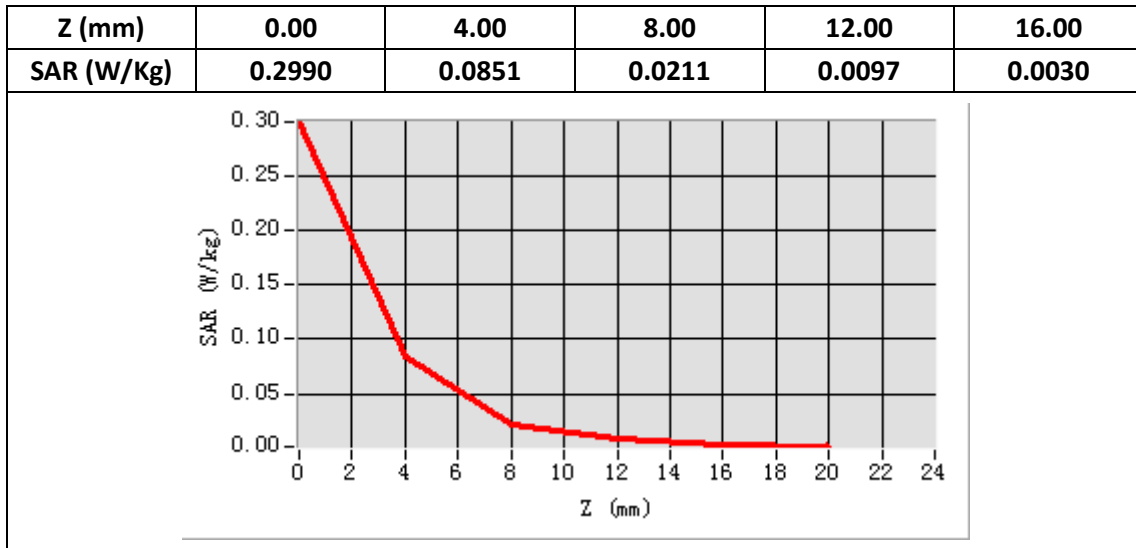
E-Field Probe	SATIMO SN_27/15_EPG0261
Frequency (MHz)	2437
Relative permittivity (real part)	52.82
Relative permittivity (imaginary)	14.55
Conductivity (S/m)	1.98
Variation (%)	-1.92
ConvF:	2.46



Maximum location: X=-11.00 Y=-10.00

SAR Peak: 0.21 W/kg

SAR 10g (W/Kg)	0.030309
SAR 1g (W/Kg)	0.082648



Plot 25: WIFI 5G 802.11a(20MHZ), Left Cheek,Middle

Type: Phone measurement

Date of measurement: 12/21/2019

Measurement duration: 22 minutes 27 seconds

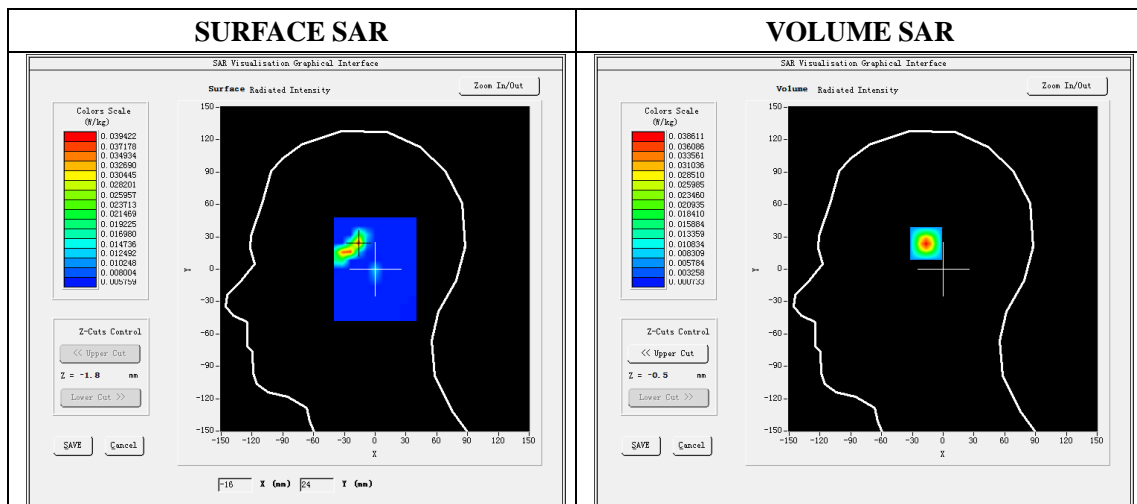
Mobile Phone IMEI number: --

A. Experimental conditions.

Area Scan	dx=4mm,dy=4mm
ZoomScan	7x7x12,dx=4m, dy=4mm, dz=2mm
Phantom	Validation plane
Device Position	Left Cheek
Band	WIFI 5G
Channels	36
Signal	OFDM (Duty cycle: 1:1)

B. SAR Measurement Results

E-Field Probe	SATIMO SN_27/15_EPG0261
Frequency (MHz)	5180
Relative permittivity (real part)	36.31
Relative permittivity (imaginary)	16.13
Conductivity (S/m)	4.66
Variation (%)	-3.34
ConvF:	2.15

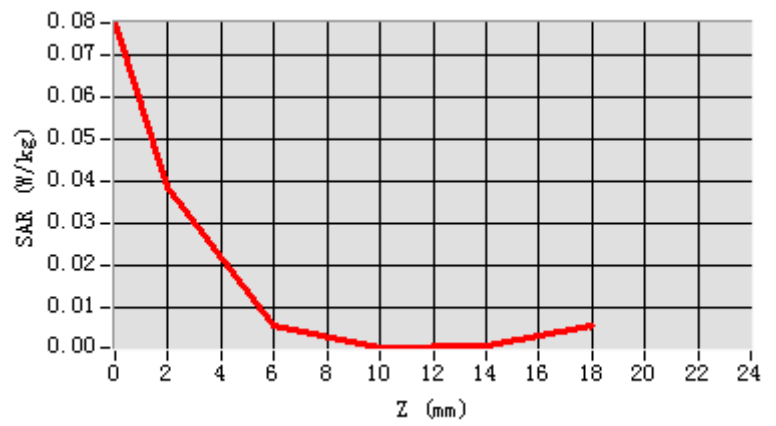


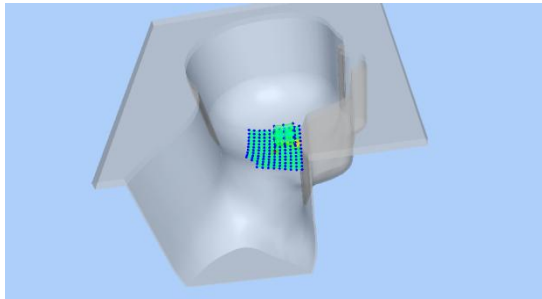
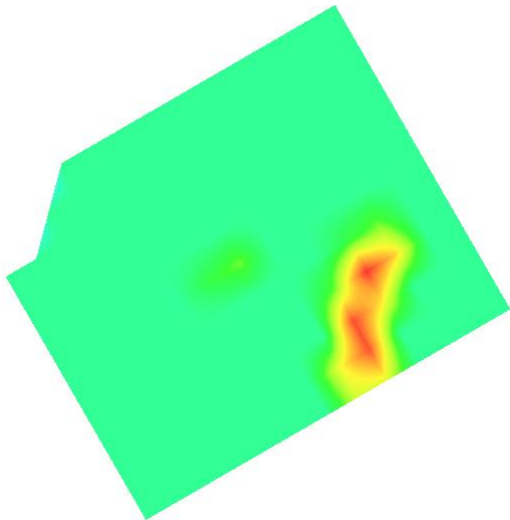
Maximum location: X=-16.00 Y=25.00

SAR Peak: 0.14 W/kg

SAR 10g (W/Kg)	0.014450
SAR 1g (W/Kg)	0.040026

Z (mm)	0.00	2.00	6.00	10.00	14.00
SAR (W/Kg)	0.0775	0.0386	0.0059	0.0007	0.0014



3D screen shot	Hot spot position
	

Plot 26: WIFI 5G 802.11a(20MHz), Face , Middle,15mm

Type: Phone measurement

Date of measurement: 12/21/2019

Measurement duration: 22 minutes 29 seconds

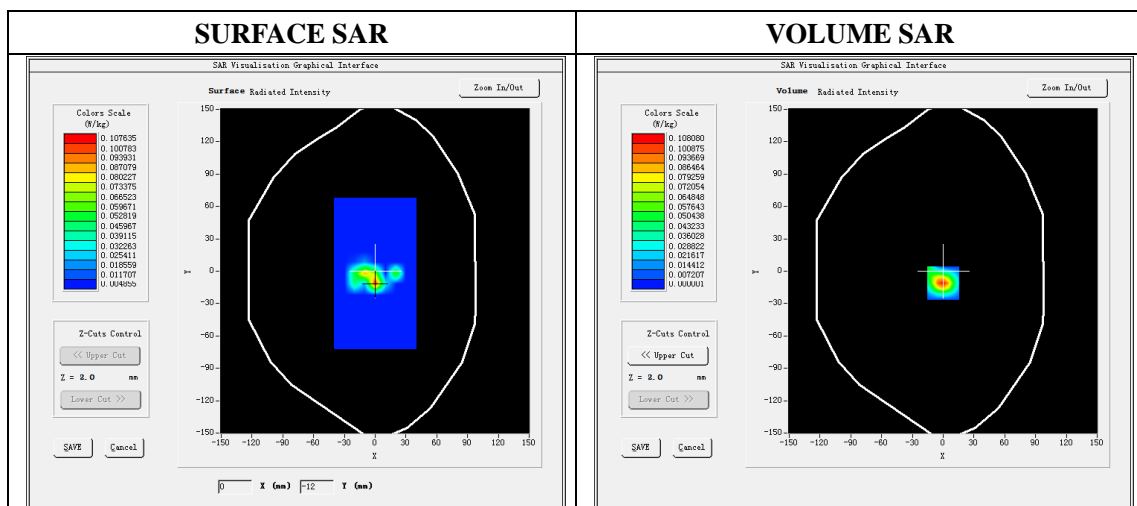
Mobile Phone IMEI number: --

A. Experimental conditions.

Area Scan	dx=4mm,dy=4mm
ZoomScan	7x7x12,dx=4m, dy=4mm, dz=2mm
Phantom	Validation plane
Device Position	Face
Band	WIFI 5G
Channels	36
Signal	OFDM (Duty cycle: 1:1)

B. SAR Measurement Results

E-Field Probe	SATIMO SN_27/15_EPG0261
Frequency (MHz)	5180
Relative permittivity (real part)	49.43
Relative permittivity (imaginary)	18.42
Conductivity (S/m)	5.32
Variation (%)	-1.93
ConvF:	2.21

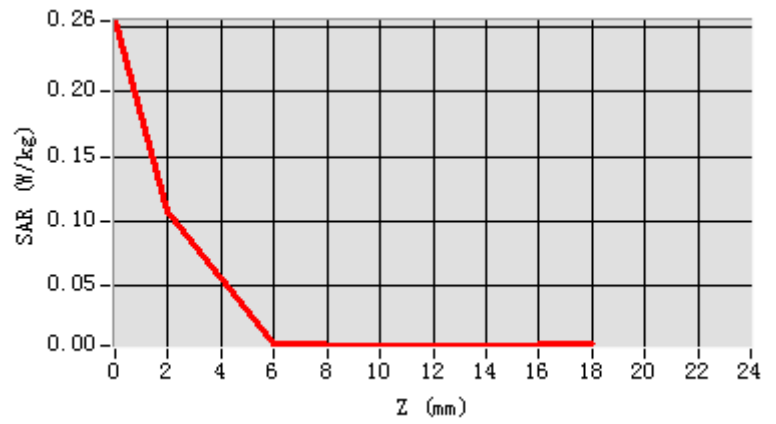


Maximum location: X=0.00 Y=-11.00

SAR Peak: 0.28 W/kg

SAR 10g (W/Kg)	0.016634
SAR 1g (W/Kg)	0.062119

Z (mm)	0.00	2.00	6.00	10.00	14.00
SAR (W/Kg)	0.2552	0.1081	0.0050	0.0030	0.0034



3D screen shot	Hot spot position
