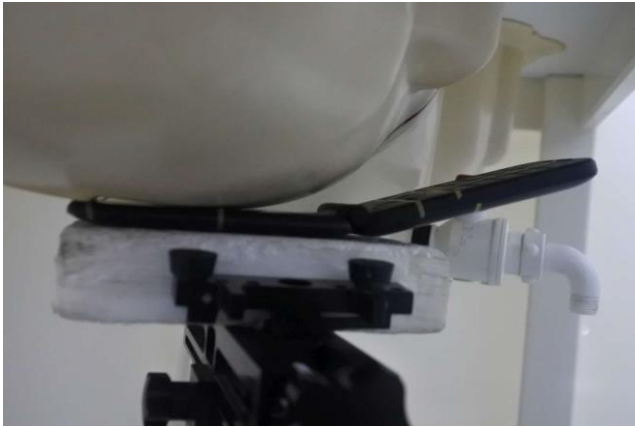
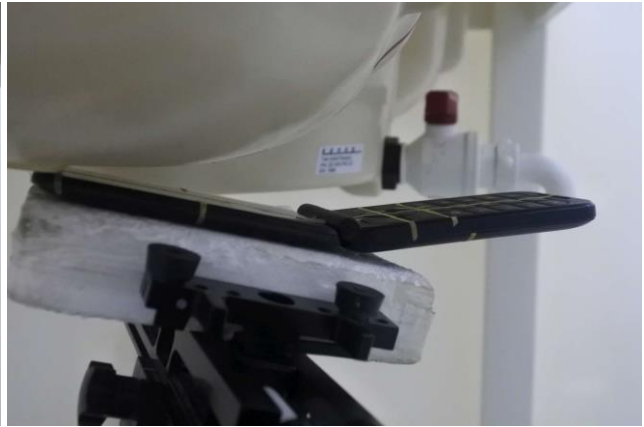


Appendix D. SAR Test Setup Photos

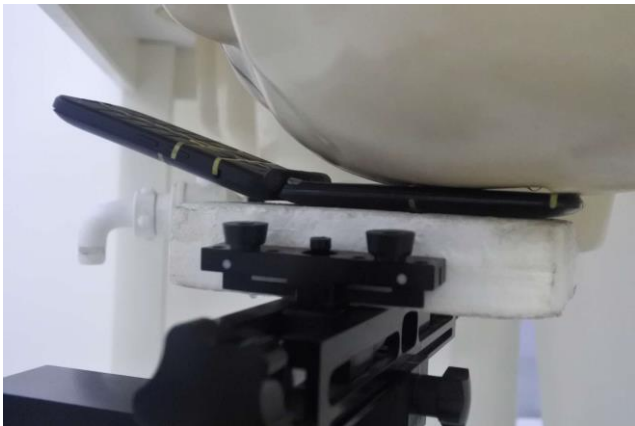
For Head



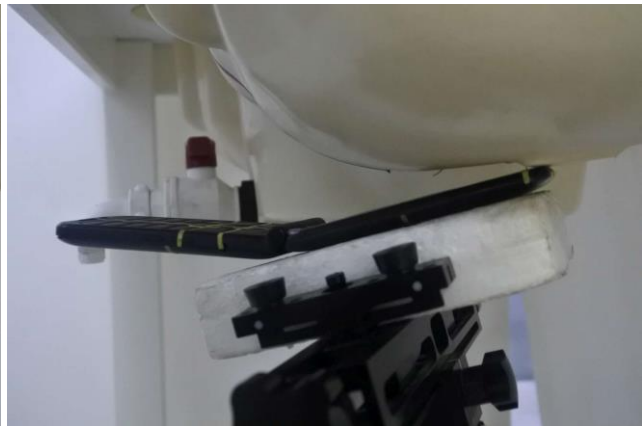
Right Cheek ,Test Separation 0 mm



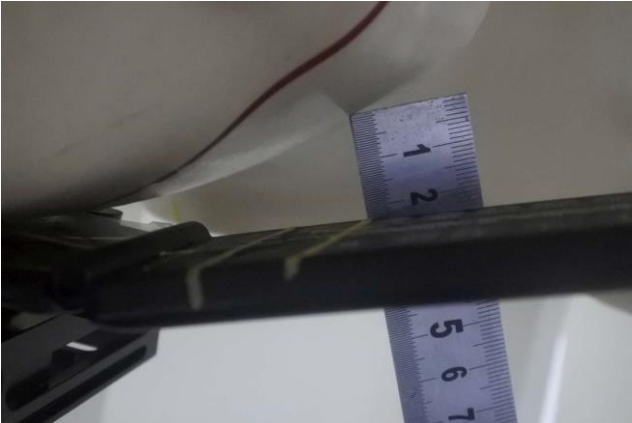
Right Tilted, Test Separation 0 mm



Left Cheek, Test Separation 0 mm

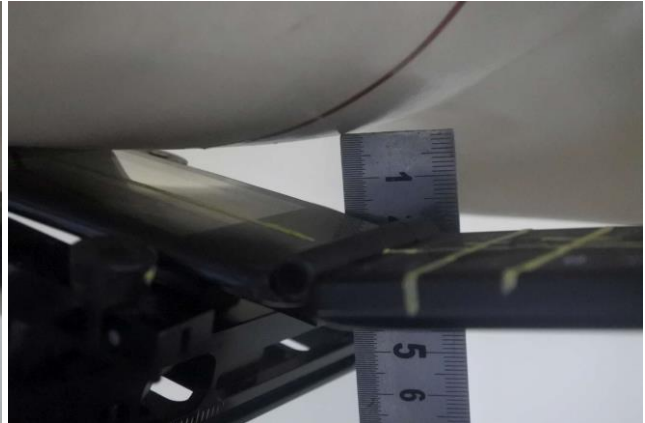


Left Tilted, Test Separation 0 mm



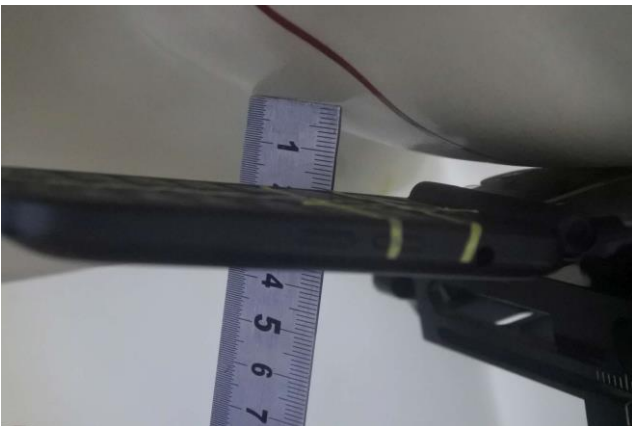
Right Cheek-SAR in mouth area(LTE Band2)

Test Separation 22 mm



Right Tilted-SAR in mouth area(GSM1900/WCDMA II)

Test Separation 18 mm



Left Cheek-SAR in mouth area(WCDMA IV/ LTE Band66);

Test Separation 18 mm



Right Cheek SAR in mouth area(GSM1900/WCDMAII /IV/LTE

Band66) Test Separation 28 mm



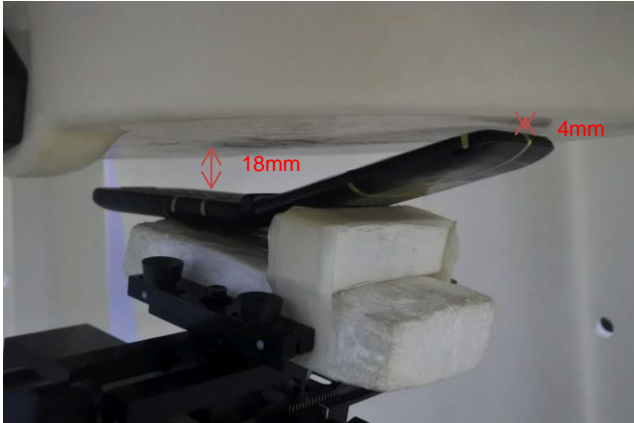
Phantom Test Separation 18 mm



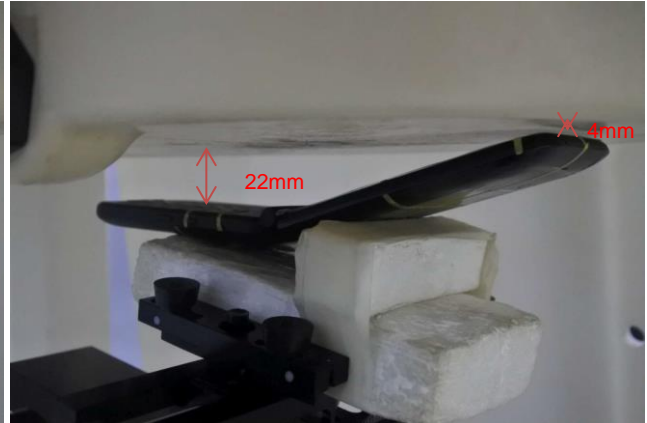
Phantom Test Separation 22 mm



Phantom Test Separation 28 mm



Head Test Separation 18mm



Head Test Separation 22 mm



Head Test Separation 28 mm

For Body(Hotspot)



Front, Test Separation 10 mm



Back, Test Separation 10 mm



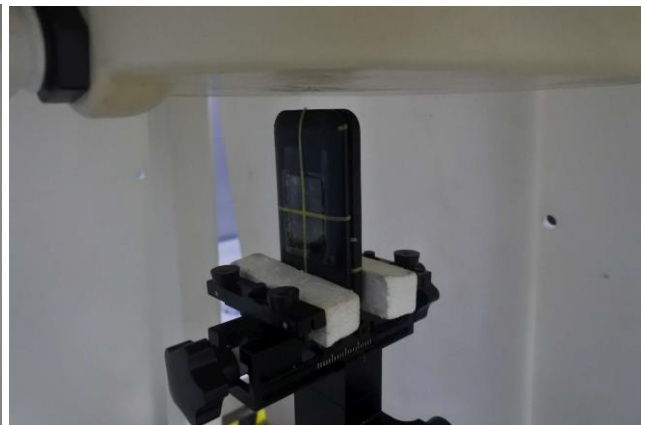
Left Side, Test Separation 10 mm



Right Side, Test Separation 10 mm



Top Side, Test Separation 10 mm



Bottom Side, Test Separation 10 mm

For Body(Body worn)

Front, Test Separation 15 mm

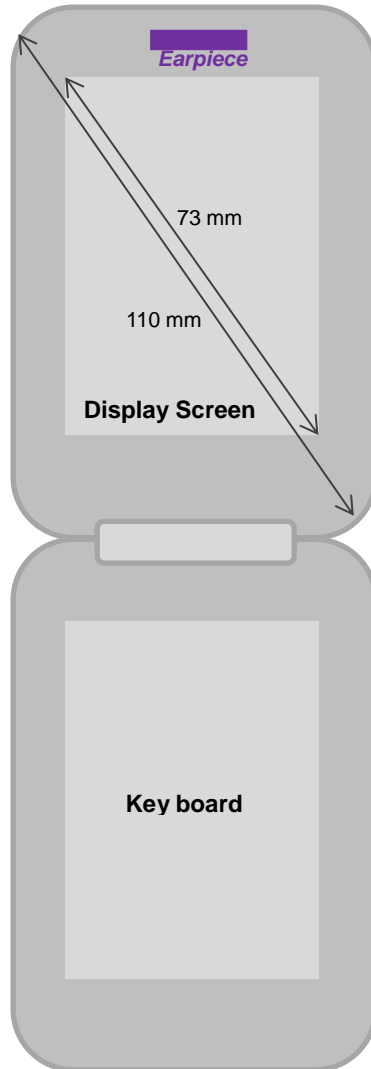


Back, Test Separation 15 mm

Antenna Location

<Flip-Open Mode>

Top Side



Left Side

Right Side

Bottom Side

Front View

<Flip-Close Mode>



Length: 108mm

Width: 56mm

Back View

Bottom Side

Distance of the Antenna to the EUT surface/edge						
Antennas	Back	Front	Top Side	Bottom Side	Right Side	Left Side
WWAN Antenna	≤ 25mm	≤ 25mm	>25mm	≤ 25mm	≤ 25mm	≤ 25mm
2.4GHz WLAN & BT	≤ 25mm	≤ 25mm	≤ 25mm	>25mm	≤ 25mm	>25mm

Positions for SAR tests; Hotspot mode						
Antennas	Back	Front	Top Side	Bottom Side	Right Side	Left Side
WWAN Antenna	Yes	Yes	No	Yes	Yes	Yes
2.4GHz WLAN & BT	Yes	Yes	Yes	No	Yes	No

General Note:

- Referring to KDB 941225 D06 v02r01, when the overall device length and width are $\geq 9\text{cm} \times 5\text{cm}$, the test distance is 10 mm. SAR must be measured for all sides and surfaces with a transmitting antenna located within 25mm from that surface or edge.