

Appendix B: SAR Measurement results Plots

Plot	Frequency/Mode	Testing Position and Channel	Test Date
1	GSM850/GPRS2Tx	Body Face, Middle ,5mm	2020/03/25
2	GSM1900/GPRS2Tx	Body Back, Middle ,5mm	2020/03/27
3	WCDMA1900	Body Face, Middle ,5mm	2020/03/27
4	WCDMA1700	Body Back, Middle ,5mm	2020/03/26
5	WCDMA850	Body Face, Middle ,5mm	2020/03/25
6	LTE Band2	Body Face, Middle ,5mm	2020/03/27
7	LTE Band4	Body Back, Middle ,5mm	2020/03/26
8	LTE Band12	Body Face, Middle ,5mm	2020/03/24
9	LTE Band17	Body Face, Middle ,5mm	2020/03/24
10	LTE Band41	Body Face, Middle ,5mm	2020/03/26

Plot 1: GPRS850, Face, Middle,5mm

Type: Phone measurement

Date of measurement: 05/10/2020

Measurement duration: 22 minutes 08 seconds

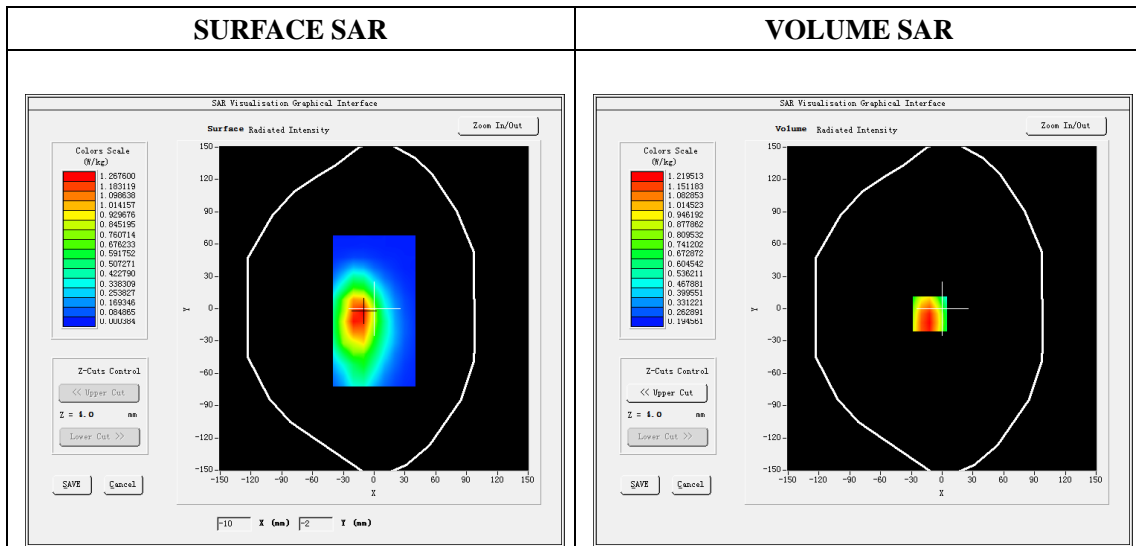
Mobile Phone IMEI number: --

A. Experimental conditions.

Area Scan	dx=8mm dy=8mm
ZoomScan	5x5x7,dx=8mm dy=8mm dz=5mm
Phantom	Validation plane
Device Position	Face
Band	GSPRS850_2Tx
Channels	190
Signal	GPRS(Duty cycle: 1:2)

B. SAR Measurement Results

E-Field Probe	SATIMO SN_41/18_EPG0330
Frequency (MHz)	836.6
Relative permittivity (real part)	55.23
Relative permittivity (imaginary part)	21.13
Conductivity (S/m)	0.98
Variation (%)	-4.95
ConvF:	1.64

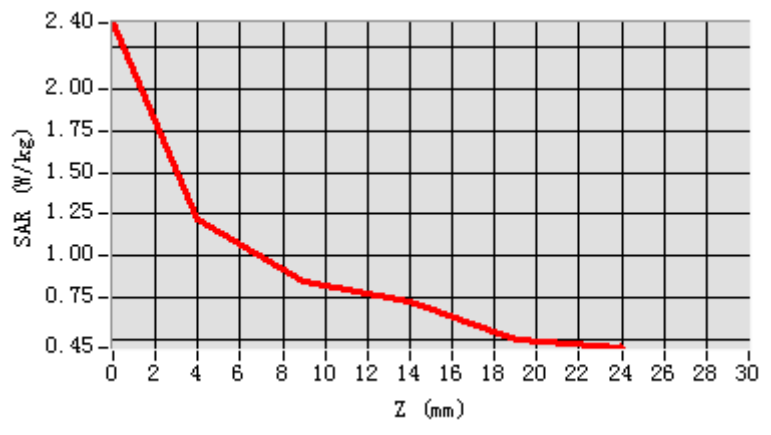


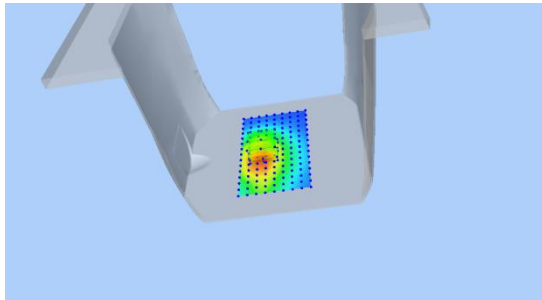
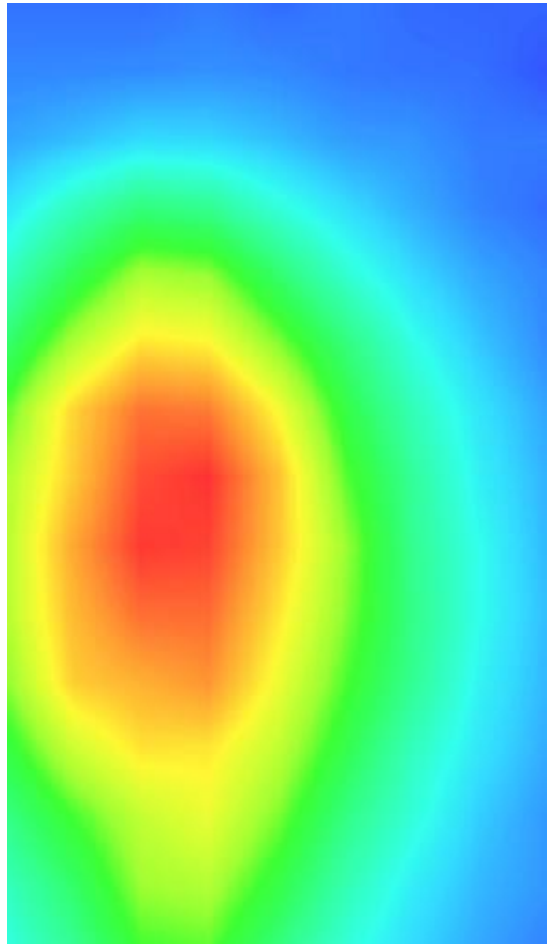
Maximum location: X=-12.00, Y=-5.00

SAR Peak: 1.60 W/kg

SAR 10g (W/Kg)	0.848706
SAR 1g (W/Kg)	1.183776

Z (mm)	0.00	4.00	9.00	14.00	19.00
SAR (W/Kg)	2.3980	1.2195	0.8440	0.7284	0.4943



3D screen shot	Hot spot position
	

Plot 2: GPRS1900, Back, Middle ,5mm

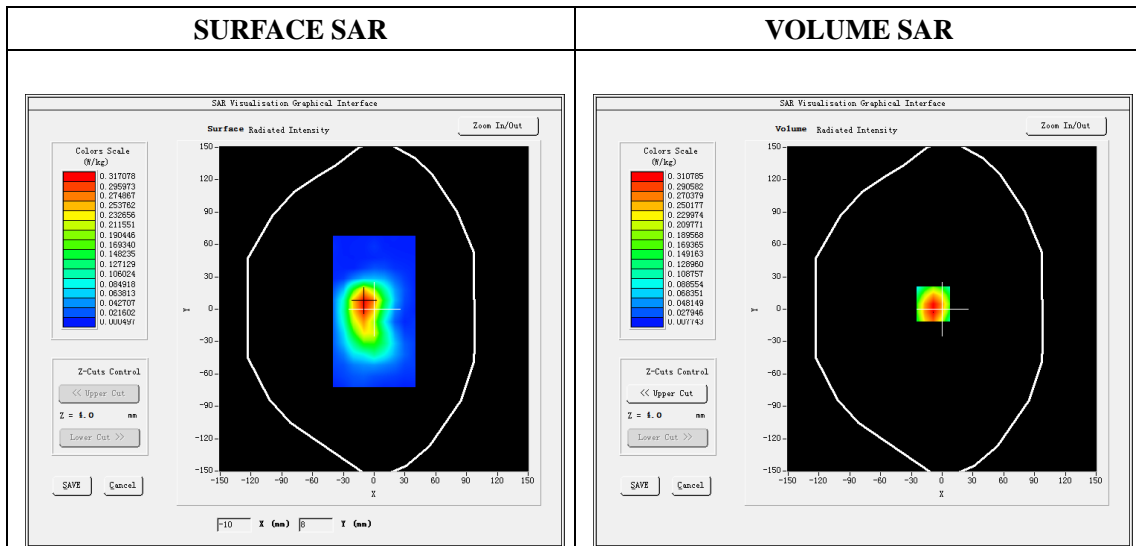
Type: Phone measurement
 Date of measurement: 05/14/2020
 Measurement duration: 22 minutes 09 seconds
 Mobile Phone IMEI number: --

A. Experimental conditions.

Area Scan	dx=8mm dy=8mm
Zoom Scan	5x5x7,dx=8mm dy=8mm dz=5mm
Phantom	Validation plane
Device Position	Back
Band	GPRS1900_2Tx
Channels	661
Signal	GPRS(Duty cycle: 1:2)

B. SAR Measurement Results

E-Field Probe	SATIMO SN_41/18_EPG0330
Frequency (MHz)	1880
Relative permittivity (real part)	53.28
Relative permittivity (imaginary part)	14.49
Conductivity (S/m)	1.53
Variation (%)	-4.17
ConvF:	2.08

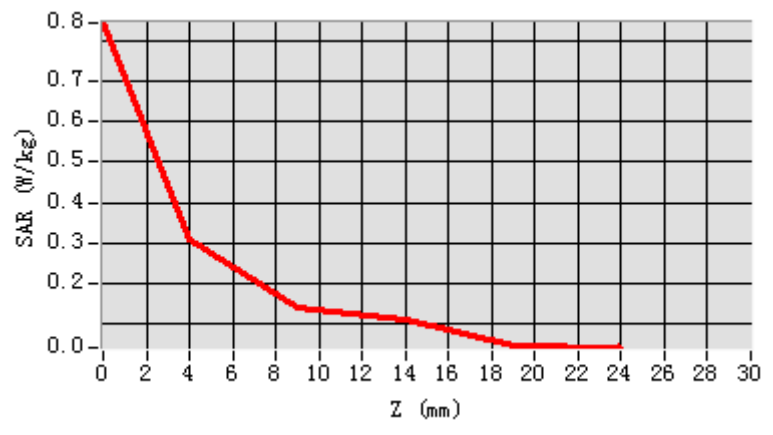


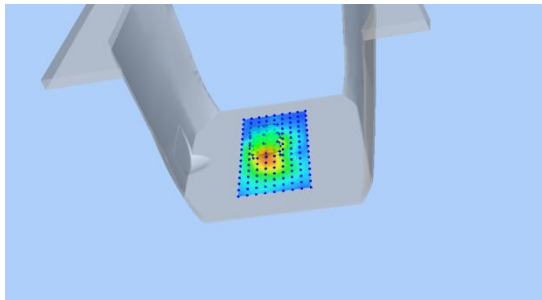
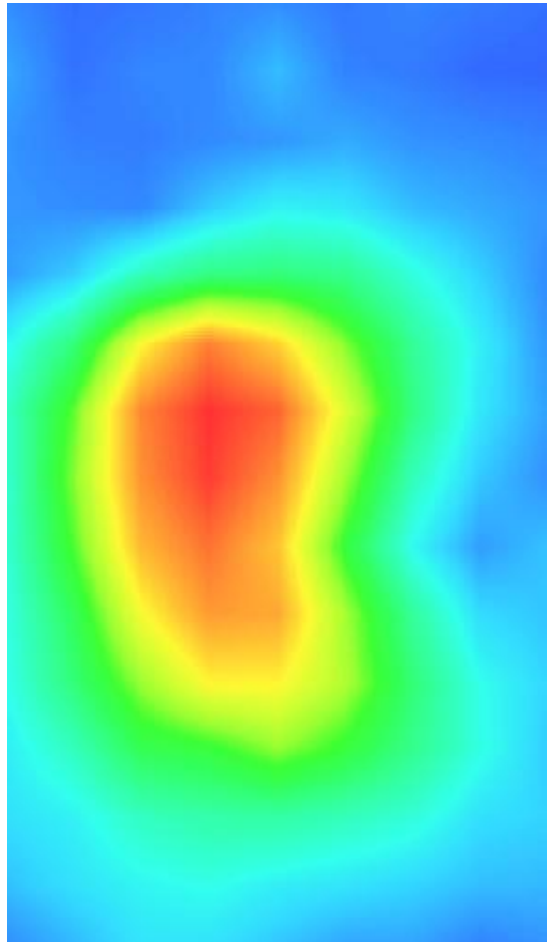
Maximum location: X=-9.00, Y=5.00

SAR Peak: 0.49 W/kg

SAR 10g (W/Kg)	0.170025
SAR 1g (W/Kg)	0.298786

Z (mm)	0.00	4.00	9.00	14.00	19.00
SAR (W/Kg)	0.8426	0.3108	0.1409	0.1119	0.0467



3D screen shot	Hot spot position
	

Plot 3: WCDMA1900, Face, Middle,5mm

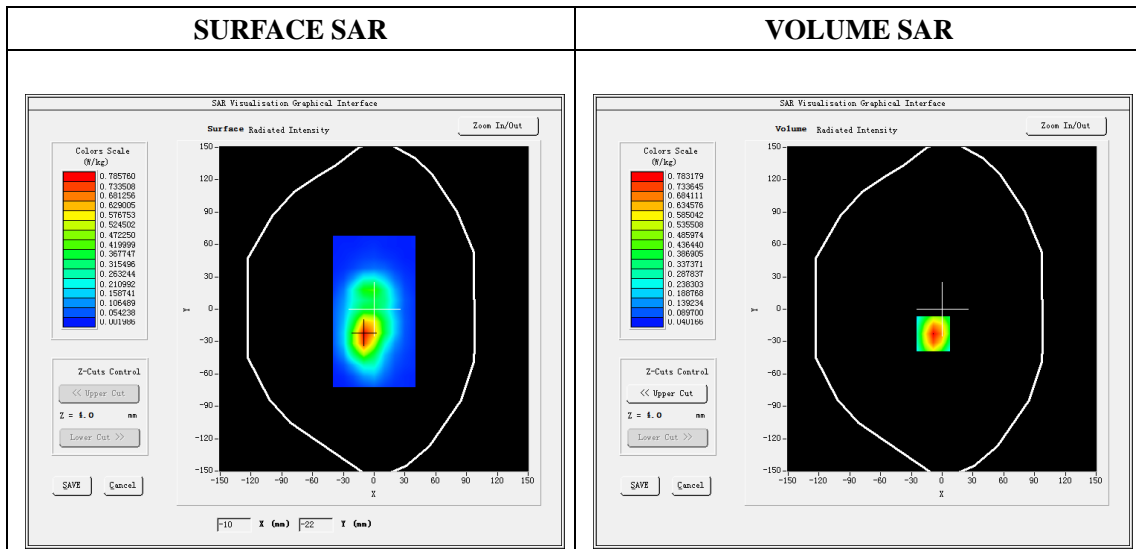
Type: Phone measurement
 Date of measurement: 05/14/2020
 Measurement duration: 22 minutes 10 seconds
 Mobile Phone IMEI number: --

A. Experimental conditions.

Area Scan	dx=8mm dy=8mm
ZoomScan	5x5x7,dx=8mm dy=8mm dz=5mm
Phantom	Validation plane
Device Position	Face
Band	Band2_WCDMA1900
Channels	9400
Signal	WCDMA (Duty cycle: 1:1)

B. SAR Measurement Results

E-Field Probe	SATIMO SN_41/18_EPG0330
Frequency (MHz)	1880
Relative permittivity (real part)	53.28
Relative permittivity (imaginary)	14.49
Conductivity (S/m)	1.53
Variation (%)	-1.46
ConvF:	2.08

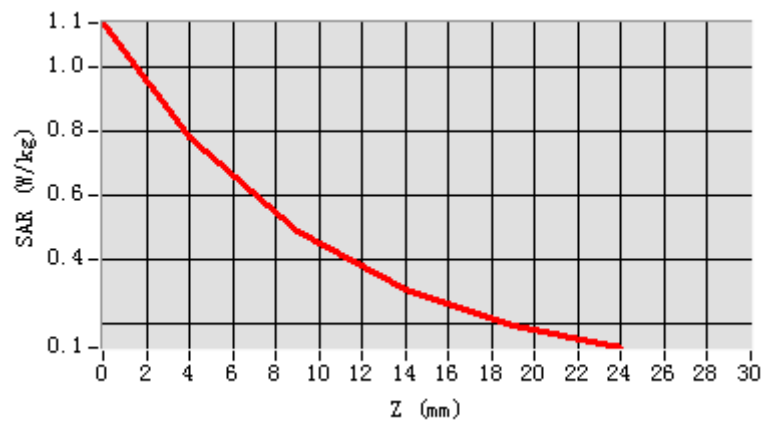


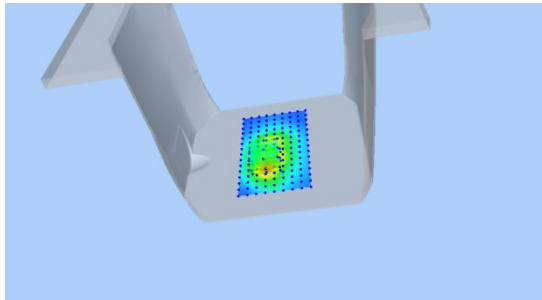
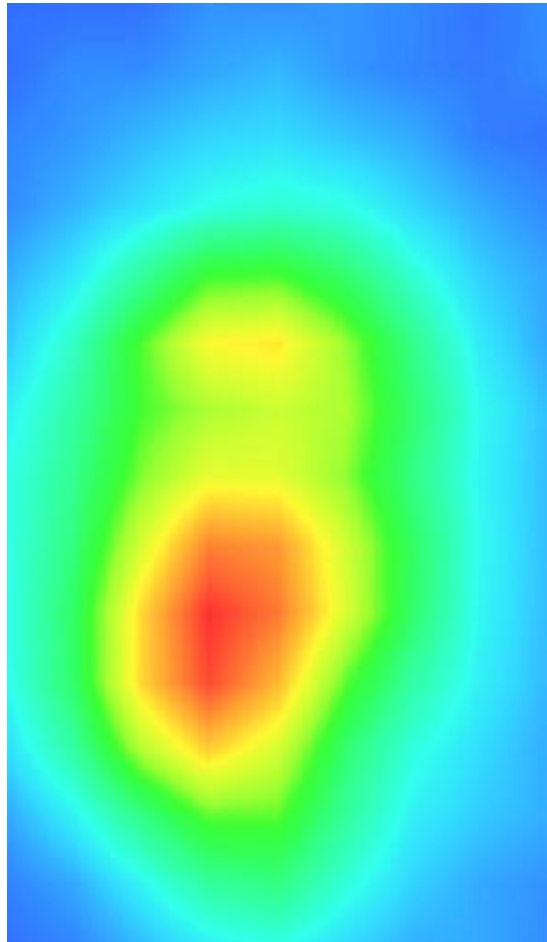
Maximum location: X=-9.00, Y=-23.00

SAR Peak: 1.15W/kg

SAR 10g (W/Kg)	0.415396
SAR 1g (W/Kg)	0.732861

Z (mm)	0.00	4.00	9.00	14.00	19.00
SAR (W/Kg)	1.1387	0.7832	0.4844	0.3022	0.1937



3D screen shot	Hot spot position
	

Plot 4: WCDMA1700, Back, Middle,5mm

Type: Phone measurement

Date of measurement: 05/13/2020

Measurement duration: 22 minutes 15 seconds

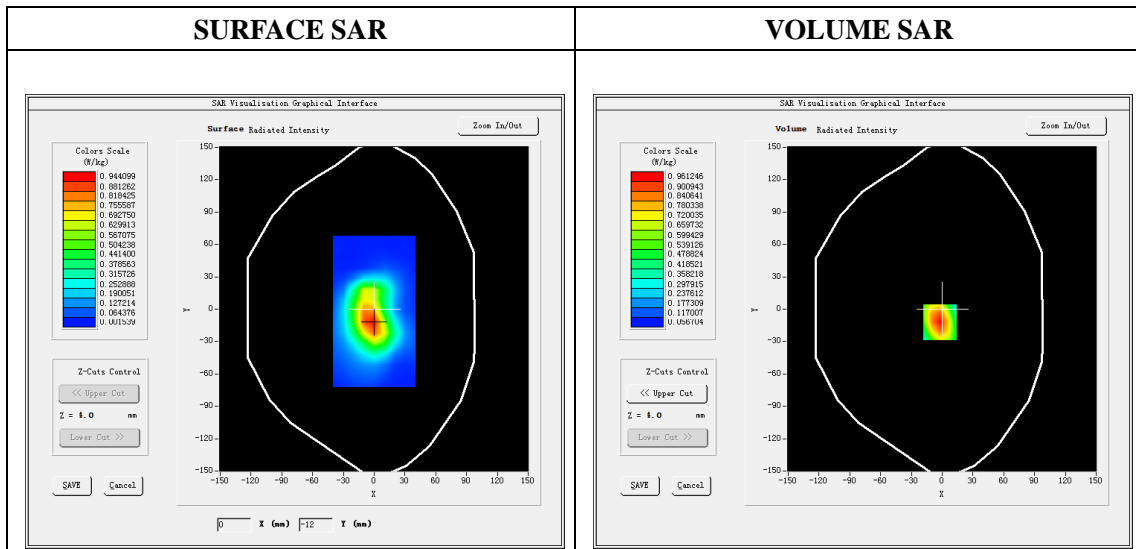
Mobile Phone IMEI number: --

A. Experimental conditions.

Area Scan	dx=8mm dy=8mm
ZoomScan	5x5x7,dx=8mm dy=8mm dz=5mm
Phantom	Validation plane
Device Position	Back
Band	Band2_WCDMA1700
Channels	1413
Signal	WCDMA (Duty cycle: 1:1)

B. SAR Measurement Results

E-Field Probe	SATIMO SN_41/18_EPG0330
Frequency (MHz)	1732.6
Relative permittivity (real part)	53.35
Relative permittivity (imaginary)	15.10
Conductivity (S/m)	1.51
Variation (%)	-0.60
ConvF:	2.22

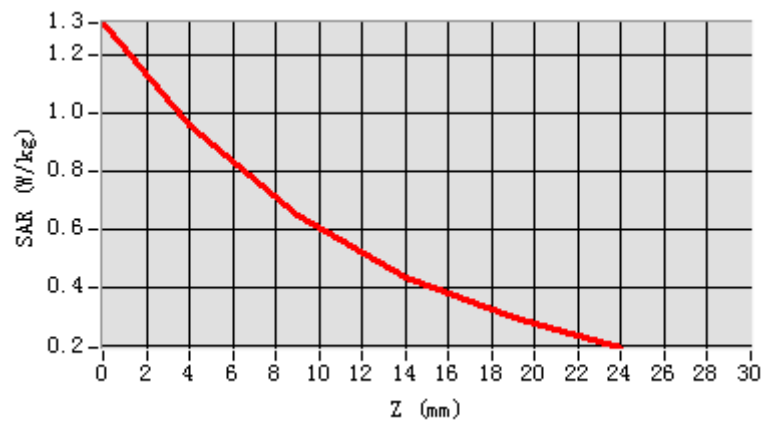


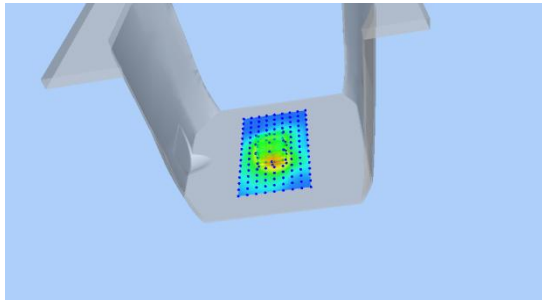
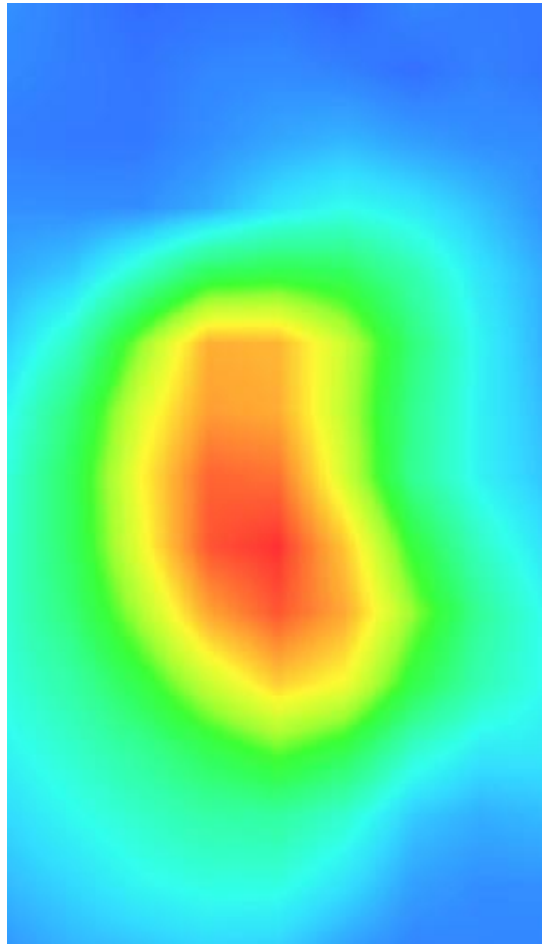
Maximum location: X=-2.00, Y=-12.00

SAR Peak: 1.31W/kg

SAR 10g (W/Kg)	0.551469
SAR 1g (W/Kg)	0.902208

Z (mm)	0.00	4.00	9.00	14.00	19.00
SAR (W/Kg)	1.3083	0.9612	0.6479	0.4372	0.2967



3D screen shot	Hot spot position
	

Plot 5: WCDMA850, Face, Middle,5mm

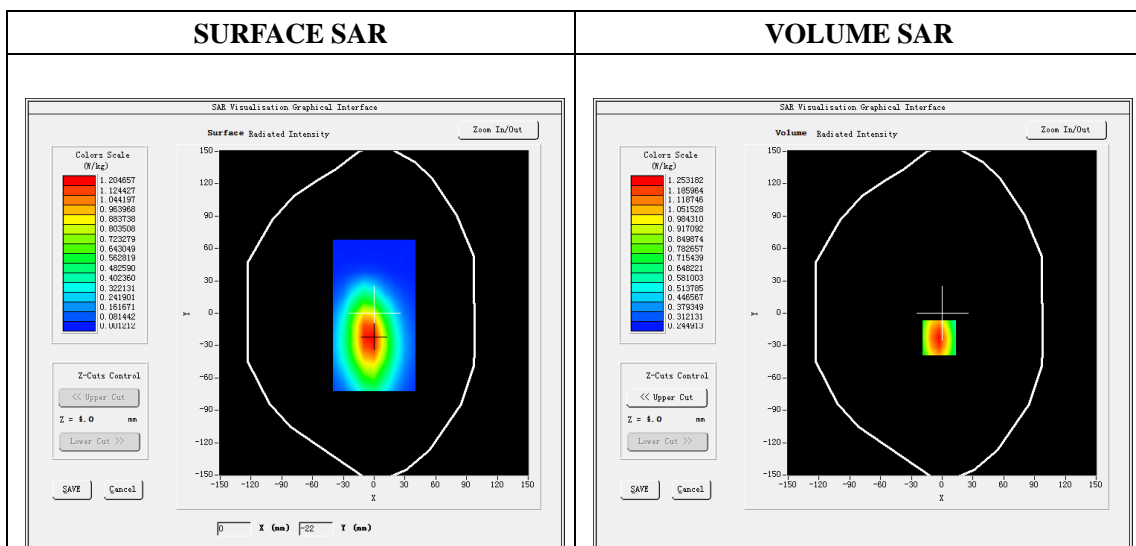
Type: Phone measurement
 Date of measurement: 05/11/2020
 Measurement duration: 22 minutes 12 seconds
 Mobile Phone IMEI number: --

A. Experimental conditions.

Area Scan	dx=8mm dy=8mm
ZoomScan	5x5x7,dx=8mm dy=8mm dz=5mm
Phantom	Validation plane
Device Position	Face
Band	Band5_WCDMA850
Channels	4183
Signal	WCDMA (Duty cycle: 1:1)

B. SAR Measurement Results

E-Field Probe	SATIMO SN_41/18_EPG0330
Frequency (MHz)	836.6
Relative permittivity (real part)	55.23
Relative permittivity (imaginary)	21.13
Conductivity (S/m)	0.98
Variation (%)	-0.10
ConvF:	1.64

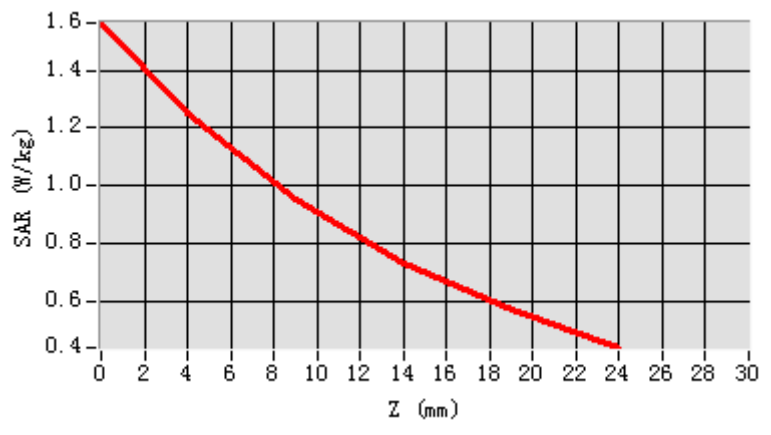


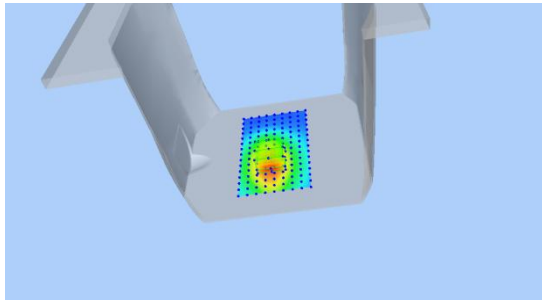
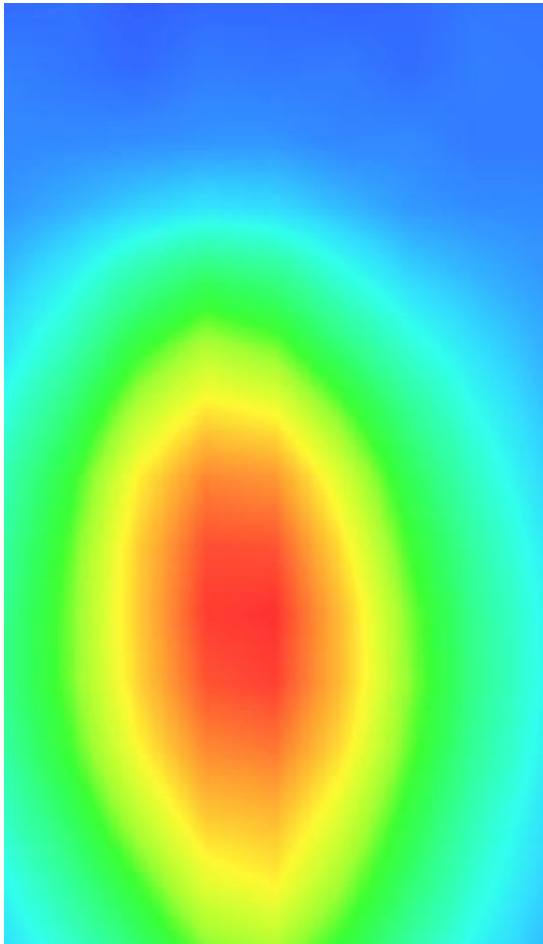
Maximum location: X=-3.00, Y=-23.00

SAR Peak: 1.57W/kg

SAR 10g (W/Kg)	0.853888
SAR 1g (W/Kg)	1.215694

Z (mm)	0.00	4.00	9.00	14.00	19.00
SAR (W/Kg)	1.5631	1.2532	0.9527	0.7320	0.5694



3D screen shot	Hot spot position
	

Plot 6: LTE Band2, 20MHz, Face, Middle,5mm

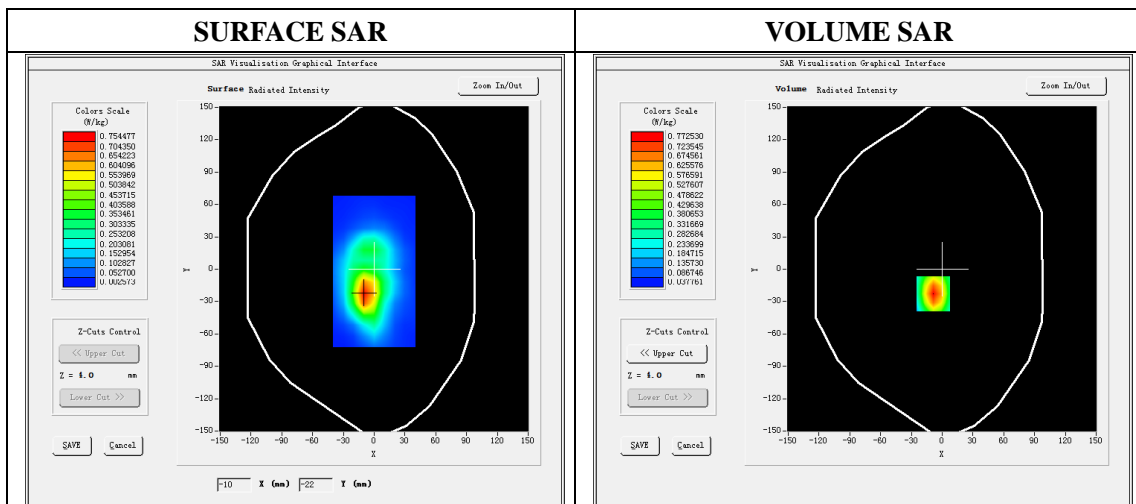
Type: Phone measurement
 Date of measurement: 05/14/2020
 Measurement duration: 22 minutes 16 seconds
 Mobile Phone IMEI number: --

A. Experimental conditions.

Area Scan	dx=8mm dy=8mm
ZoomScan	5x5x7,dx=8mm dy=8mm dz=5mm
Phantom	Validation plane
Device Position	Face
Band	LTE Band 2
Channels	18900
Signal	LTE (Duty cycle: 1:1)

B. SAR Measurement Results

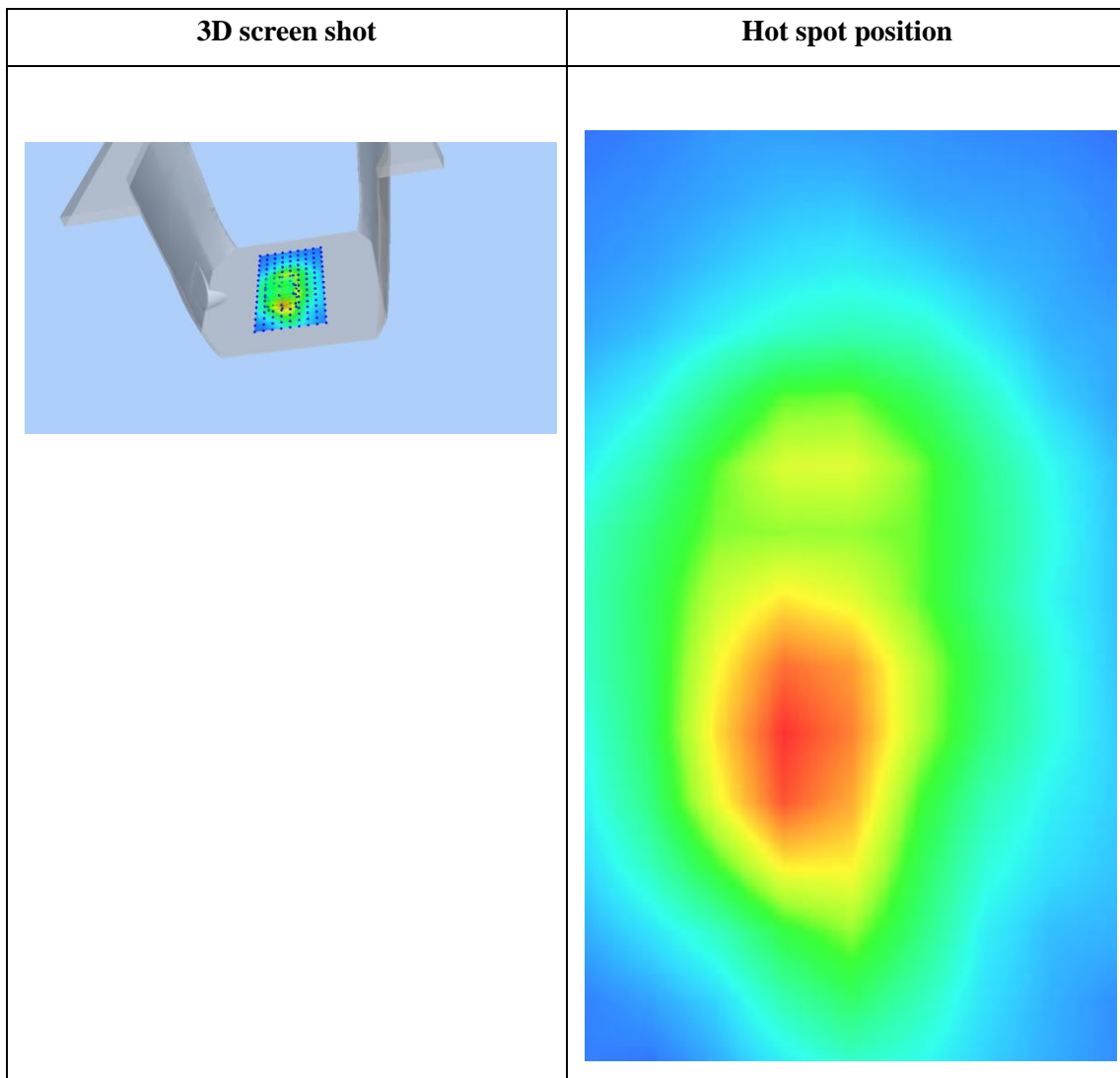
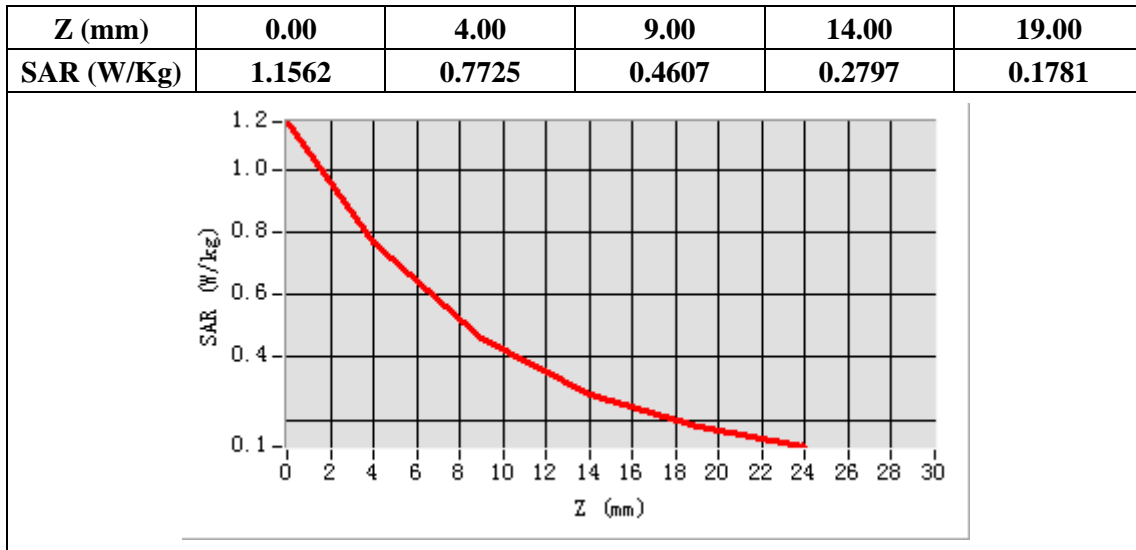
E-Field Probe	SATIMO SN_41/18_EPG0330
Frequency (MHz)	1880
Relative permittivity (real part)	53.28
Relative permittivity (imaginary)	14.49
Conductivity (S/m)	1.53
Variation (%)	1.02
ConvF:	2.08



Maximum location: X=-9.00, Y=-23.00

SAR Peak: 1.16W/kg

SAR 10g (W/Kg)	0.402375
SAR 1g (W/Kg)	0.719311



Plot 7: LTE Band4, 20MHz, Back, Middle,5mm

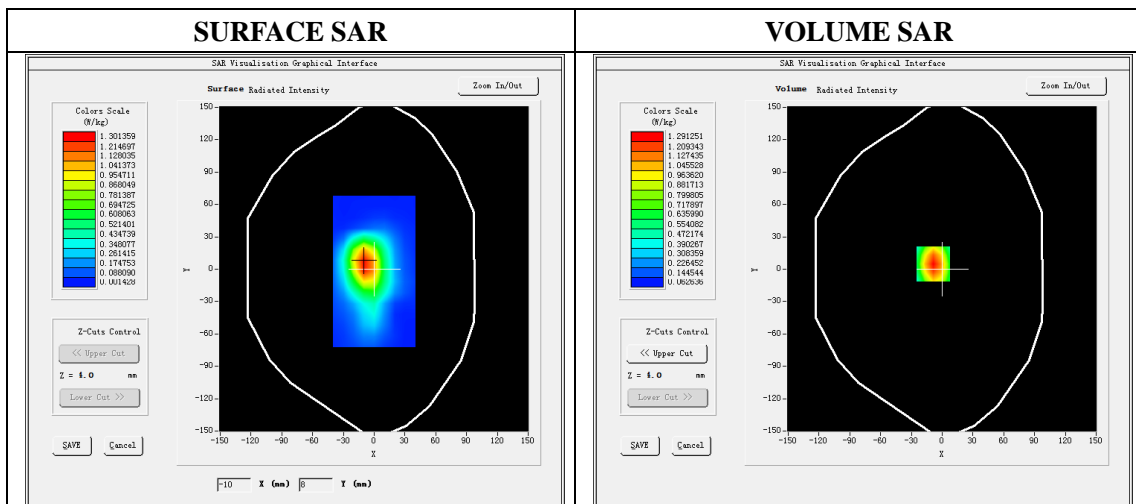
Type: Phone measurement
 Date of measurement: 05/13/2020
 Measurement duration: 22 minutes 13 seconds
 Mobile Phone IMEI number: --

A. Experimental conditions.

Area Scan	dx=8mm dy=8mm
ZoomScan	5x5x7,dx=8mm dy=8mm dz=5mm
Phantom	Validation plane
Device Position	Back
Band	LTE Band 4
Channels	20175
Signal	LTE (Duty cycle: 1:1)

B. SAR Measurement Results

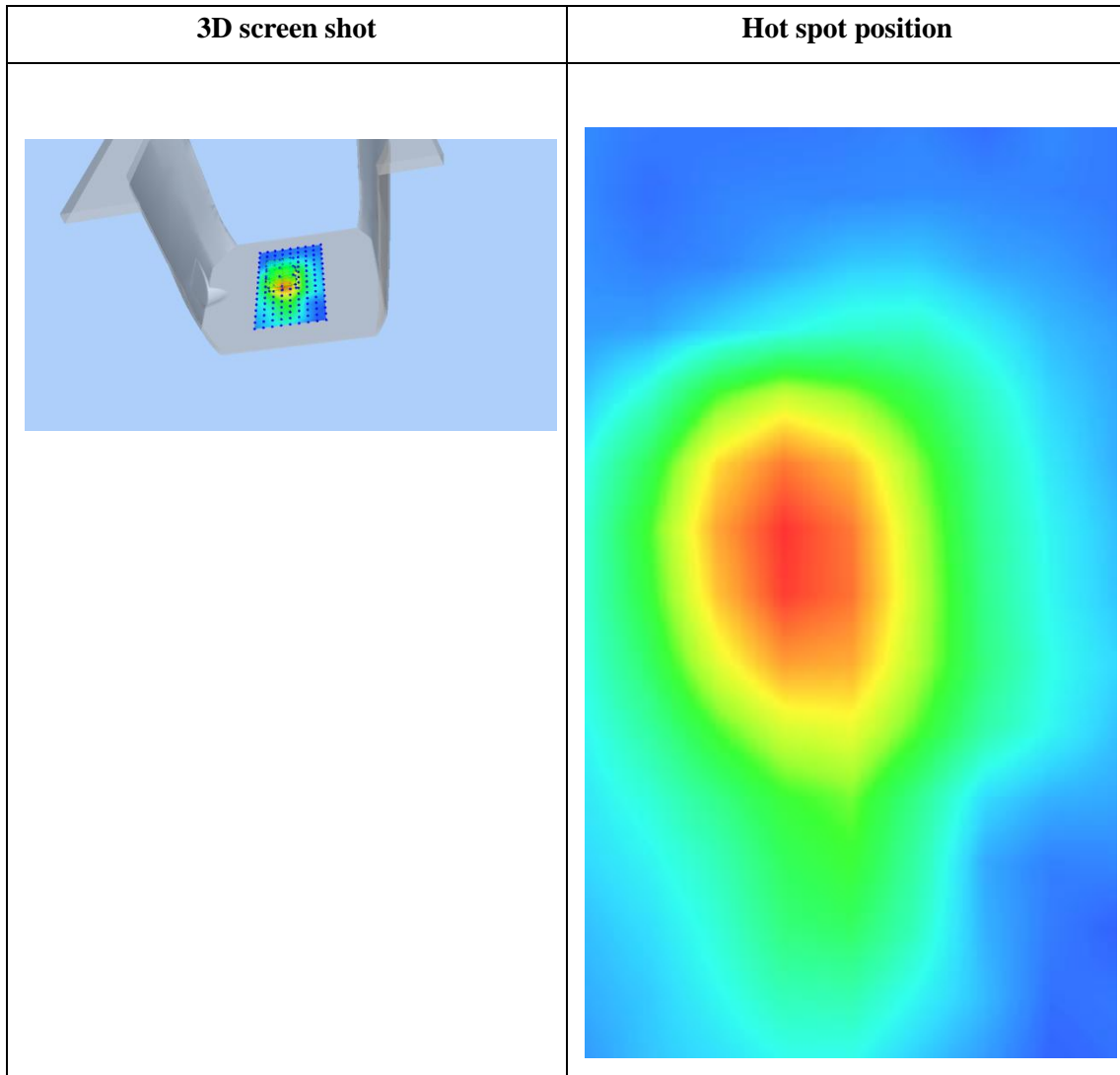
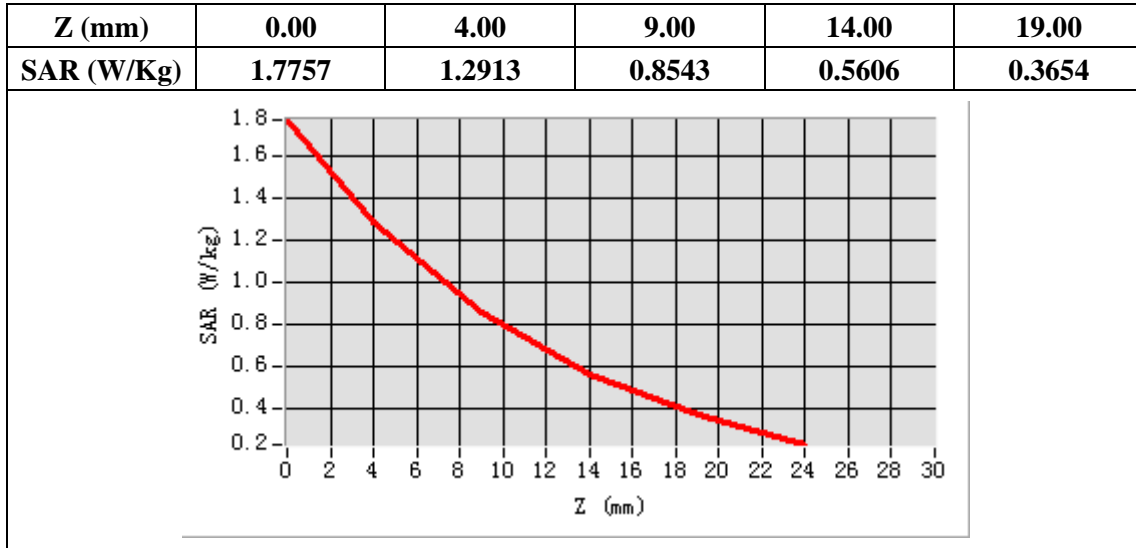
E-Field Probe	SATIMO SN_41/18_EPG0330
Frequency (MHz)	1732.5
Relative permittivity (real part)	53.35
Relative permittivity (imaginary)	15.10
Conductivity (S/m)	1.51
Variation (%)	-2.29
ConvF:	1.81



Maximum location: X=-9.00, Y=5.00

SAR Peak: 1.78W/kg

SAR 10g (W/Kg)	0.736075
SAR 1g (W/Kg)	1.232707



Plot 8: LTE Band12, 10MHz, Face, Middle,5mm

Type: Phone measurement

Date of measurement: 05/10/2020

Measurement duration: 22 minutes 17 seconds

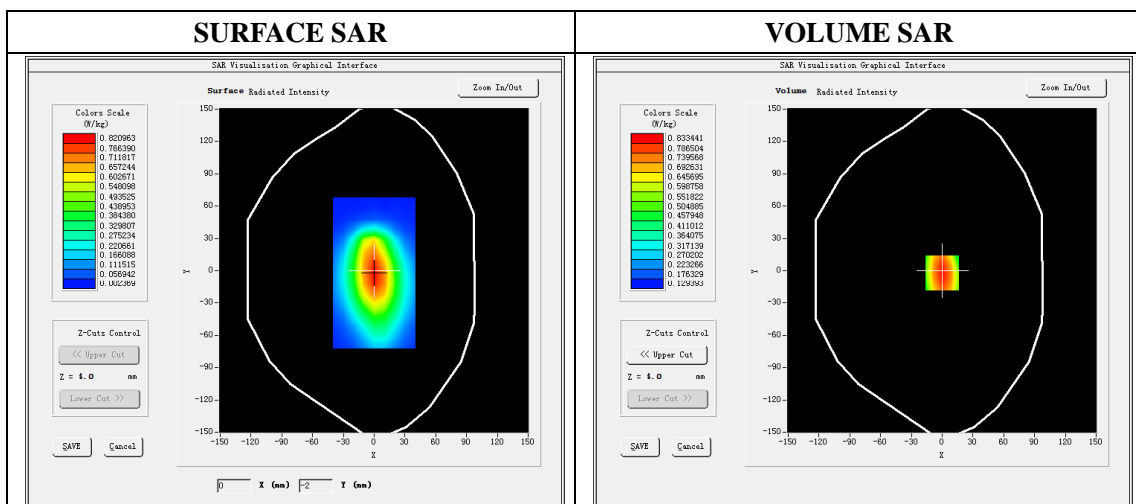
Mobile Phone IMEI number: --

A. Experimental conditions.

Area Scan	dx=8mm dy=8mm
ZoomScan	5x5x7,dx=8mm dy=8mm dz=5mm
Phantom	Validation plane
Device Position	Face
Band	LTE Band 12
Channels	23095
Signal	LTE (Duty cycle: 1:1)

B. SAR Measurement Results

E-Field Probe	SATIMO SN_41/18_EPG0330
Frequency (MHz)	707.5
Relative permittivity (real part)	55.53
Relative permittivity (imaginary)	23.28
Conductivity (S/m)	0.97
Variation (%)	0.56
ConvF:	1.59

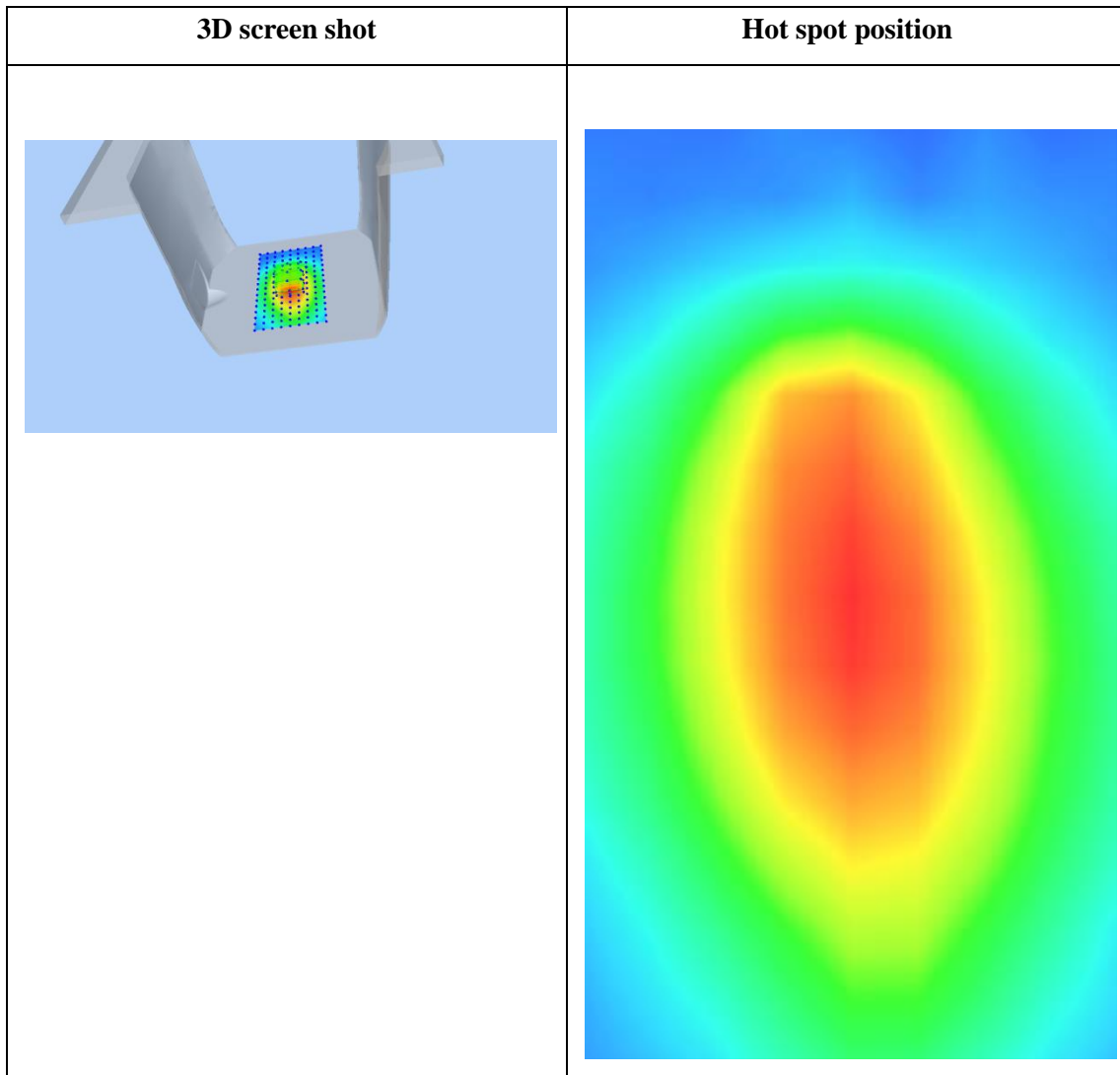
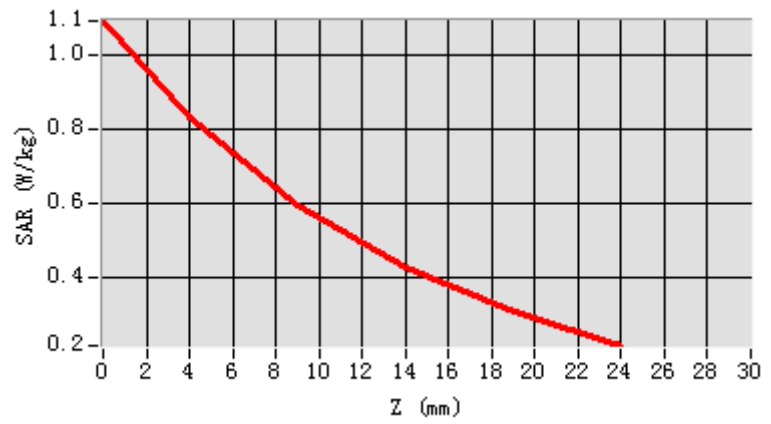


Maximum location: X=0.00, Y=-2.00

SAR Peak: 1.09W/kg

SAR 10g (W/Kg)	0.548237
SAR 1g (W/Kg)	0.811875

Z (mm)	0.00	4.00	9.00	14.00	19.00
SAR (W/Kg)	1.0890	0.8334	0.5946	0.4267	0.3091



Plot 9: LTE Band 17, 10MHz, Face, Middle,5mm

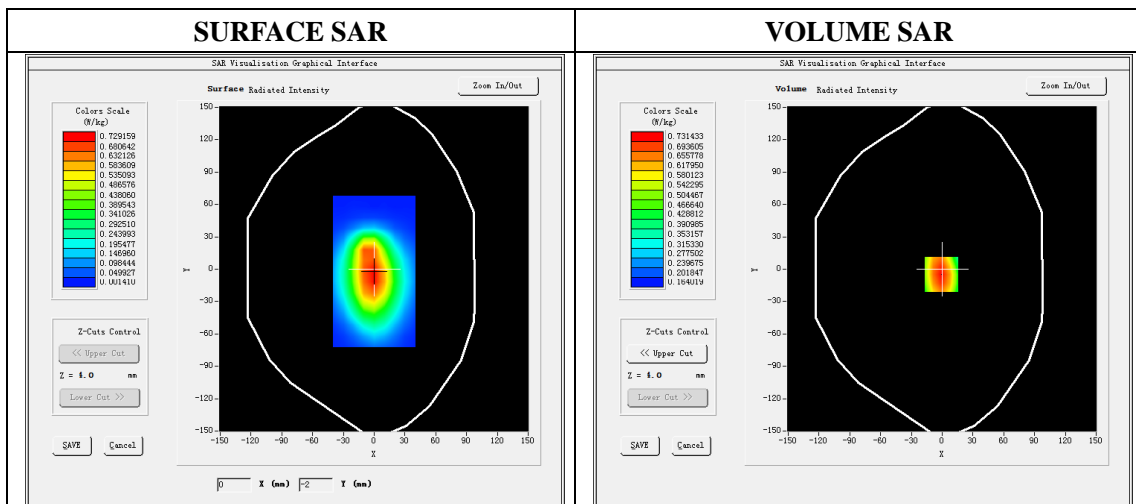
Type: Phone measurement
 Date of measurement: 05/10/2020
 Measurement duration: 22 minutes 14 seconds
 Mobile Phone IMEI number: --

A. Experimental conditions.

Area Scan	dx=8mm dy=8mm
ZoomScan	5x5x7,dx=8mm dy=8mm dz=5mm
Phantom	Validation plane
Device Position	Face
Band	LTE Band 17
Channels	23790
Signal	LTE (Duty cycle: 1:1)

B. SAR Measurement Results

E-Field Probe	SATIMO SN_41/18_EPG0330
Frequency (MHz)	710
Relative permittivity (real part)	55.53
Relative permittivity (imaginary)	23.28
Conductivity (S/m)	0.97
Variation (%)	-0.88
ConvF:	1.59

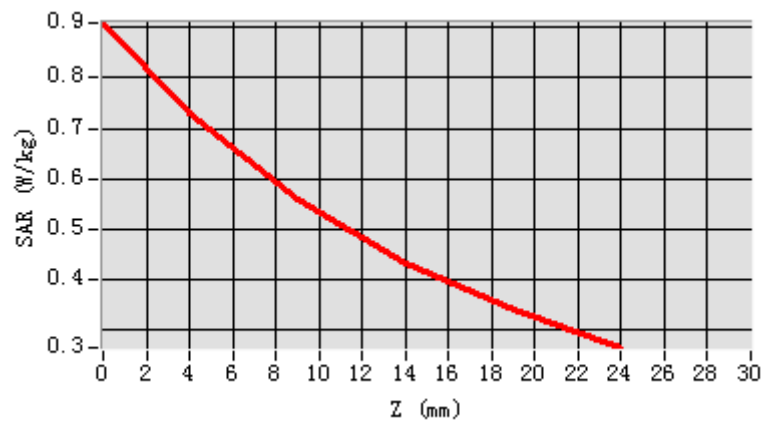


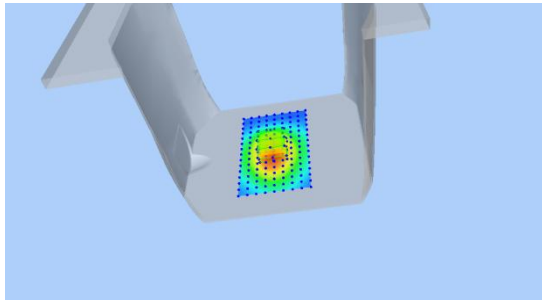
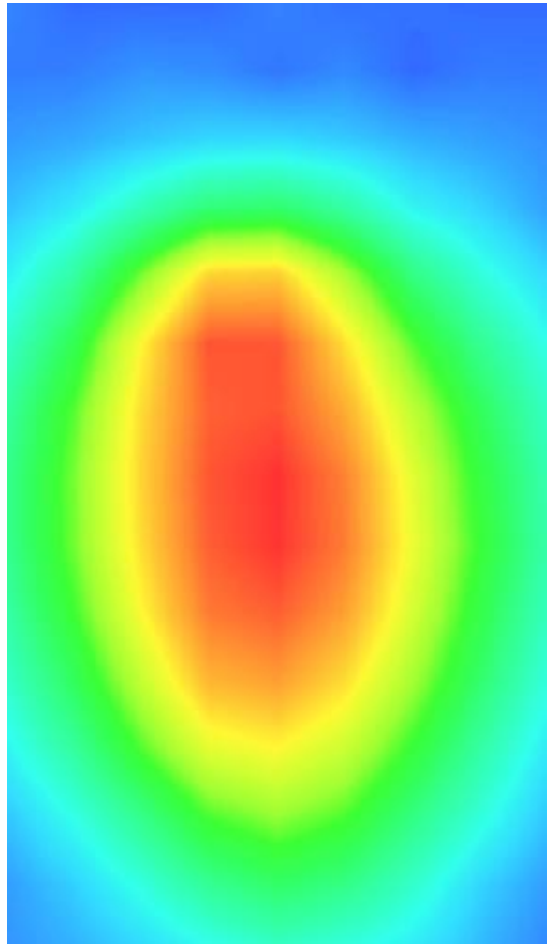
Maximum location: X=-1.00, Y=-5.00

SAR Peak: 0.91W/kg

SAR 10g (W/Kg)	0.505795
SAR 1g (W/Kg)	0.700497

Z (mm)	0.00	4.00	9.00	14.00	19.00
SAR (W/Kg)	0.9096	0.7314	0.5586	0.4315	0.3379



3D screen shot	Hot spot position
	

Plot 10: LTE Band41, 20MHz, Face, Middle,5mm

Type: Phone measurement

Date of measurement: 05/17/2020

Measurement duration: 22 minutes 18 seconds

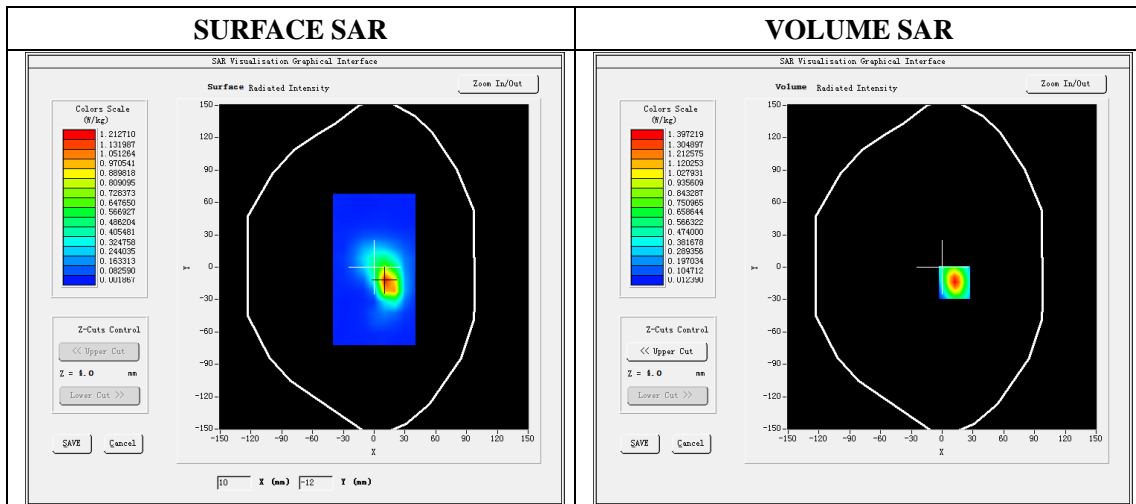
Mobile Phone IMEI number: --

A. Experimental conditions.

Area Scan	dx=8mm dy=8mm
ZoomScan	5x5x7,dx=8mm dy=8mm dz=5mm
Phantom	Validation plane
Device Position	Face
Band	LTE Band 41
Channels	40620
Signal	LTE (Duty cycle: 1:1)

B. SAR Measurement Results

E-Field Probe	SATIMO SN_41/18_EPG0330
Frequency (MHz)	2593
Relative permittivity (real part)	52.54
Relative permittivity (imaginary)	15.02
Conductivity (S/m)	2.17
Variation (%)	-4.20
ConvF:	2.22



Maximum location: X=12.00, Y=-14.00

SAR Peak: 2.69W/kg

SAR 10g (W/Kg)	0.541897
SAR 1g (W/Kg)	1.270272

