

**PLEASE READ THIS SAFETY INFORMATION BEFORE YOU USE THE DEVICE. FOLLOWING THE WARNINGS WILL HELP PREVENT INJURY TO YOURSELF OR OTHERS AND DAMAGE TO YOUR DEVICE.**

## Pictograms and Graphic Symbols



Read the Safety Information before using this device. Failure to comply with safety warnings can result in serious injury



Do not use while driving



For body-worn operation maintain a separation of 5mm



Keep away from pacemakers and other personal medical devices



Switch off when instructed in hospitals and medical facilities



Switch off when instructed in aircrafts and airports



Switch off in explosive environments



Do not use while refueling or near gas or flammable liquids



Do not dispose of this device in a fire



Avoid contact with magnetic media



Avoid Extreme Temperatures



Avoid contact with liquid, keep dry



Do not try and disassemble



Do not rely on this device for emergency communications



Only use approved accessories



This device is not intended for use by young children. If you allow a child to use it ensure the child is strictly supervised. This device contains small parts which are a choking hazard



Do not to use this device whilst walking across a road or cycling

## **RF Exposure**

This equipment complies with CE radiation exposure limits set forth for an uncontrolled environment. This equipment should be installed and operated with minimum distance of 20 cm between the radiator and your body. Your device contains a transmitter and a receiver. When it is ON, it receives and transmits RF energy. When you communicate with your device, the system handling your connection controls the power level at which your device transmits.

Important safety information regarding radiofrequency radiation (RF) exposure. To ensure compliance with RF exposure guidelines the device must be used with a separation from the body. Failure to observe these instructions could result in your RF exposure exceeding the relevant guideline limits.

## **FCC Regulations**

This device complies with part 15 of the FCC Rules. Operation is subject to the following two conditions: (1) This device may not cause harmful interference, and (2) this device must accept any interference received, including interference that may cause undesired operation.

This device has been tested and found to comply with the limits for a Class B digital device, pursuant to Part 15 of the FCC Rules. These limits are designed to provide reasonable protection against harmful

interference in a residential installation.

This equipment generates, uses and can radiated radio frequency energy and, if not installed and used in accordance with the instructions, may cause harmful interference to radio communications. However, there is no guarantee that interference will not occur in a particular installation. If this equipment does cause harmful interference to radio or television reception, which can be determined by turning the equipment off and on, the user is encouraged to try to correct the interference by one or more of the following measures:

- Reorient or relocate the receiving antenna.
- Increase the separation between the equipment and receiver.
- Connect the equipment into an outlet on a circuit different from that to which the receiver is connected.
- Consult the dealer or an experienced radio/TV technician for help. Caution: Changes or modifications not expressly approved by the party responsible for compliance could void the user's authority to operate the equipment.

## **Driver Distraction**

Full attention must be given to driving at all times in order to reduce the risk of an accident. Using this device while driving causes

distraction and can lead to an accident. You must comply with local laws and regulations restricting the use of wireless devices while driving.

## **Operating machinery**

Full attention must be given to operating the machinery in order to reduce the risk of an accident.

## **Product Handling**

You alone are responsible for how you use your device and any consequences of its use. You must always switch off your device wherever the use of a mobile phone is prohibited. Use of your device is subject to safety measures designed to protect users and their environment.

- Always treat your device and its accessories with care and keep it in a clean and dust-free place.
- Do not expose your device or its accessories to open flames or lit tobacco products.
- Do not expose your device or its accessories to liquid, moisture or high humidity.
- Do not drop, throw or try to bend your device or its accessories.

- Do not use harsh chemicals, cleaning solvents, or aerosols to clean the device or its accessories.
- Do not paint your device or its accessories.

- Do not attempt to disassemble your device or its accessories: only authorized personnel must do so.

- Do not expose your device or its accessories to extreme temperatures, minimum -20 and maximum +45 degrees Celsius. For optimal performance operate within a range of minimum 0 and maximum +35 degrees Celsius.

- Please check local regulations for disposal of electronic products.

## **Small Children**

Do not leave your device and its accessories within the reach of small children or allow them to play with it. They could hurt themselves or others, or could accidentally damage the device. Your device contains small parts with sharp edges that may cause an injury or which could become detached and create a choking hazard.

## **Electrostatic discharge (ESD)**

Do not touch the SIM card's metal connectors

## **Power supply**

Do not connect your device to the power supply or switch it on until instructed to do so in the installation instructions.

## **Air Bags**

Do not place this device in the area over an air bag or in the air bag deployment area. Store the device safely before driving your vehicle.

## **Emergency Situations**

This device, like any wireless device, operates using radio signals, which cannot guarantee connection in all conditions. Therefore, you must never rely solely on any wireless device for emergency communications.

## **Device Heating**

Your device may become warm during normal use, do not use this device if it is overheated.

## **Electrical Safety**

### **Accessories**

Only use approved accessories. Do not connect with incompatible products or accessories. Take care not to touch or allow metal objects, such as coins or key rings, to contact or short-circuit the charger, device charging point or any electrical contacts on accessories.

Do not touch your device with wet hands. Doing so may cause an electric shock. Do not touch the power cord with wet hands or disconnect the charger by pulling the cord. Doing so may result in electrocution.

## **Connection to a Car**

Seek professional advice when connecting a device interface to the vehicle electrical system.

## **Faulty and Damaged Products**

Do not attempt to disassemble the device or its accessory.

Only qualified personnel should service or repair the device or its accessory.

If your device or its accessory has been submerged in water or other liquid, punctured, or subjected to a severe fall, do not use it until you have taken it to be checked at an authorized service centre.

## **Interference**

Care must be taken when using the device in close proximity to personal medical devices, such as pacemakers and hearing aids.

## **Pacemakers**

Pacemaker manufacturers recommend that a minimum separation of 15 cm be maintained between a device and a pacemaker to avoid potential interference with the pacemaker.



# Vodafone Connect Module 4G Broadband Back-up Product safety information



## EU DECLARATION OF CONFORMITY

Vodafone hereby declares that the radio equipment type M300z is in compliance with Directive 2014/53/EU.

## UKCA DECLARATION OF CONFORMITY

Vodafone hereby declares that the radio equipment type M300z is in compliance with Radio Equipment Regulations 2017.

The full text of the EU and UKCA Declarations of Conformity (DoC) are available at the following Internet address:  
[vodafone.com/M300z/ec-declaration](http://vodafone.com/M300z/ec-declaration)

## Vodafone

Vodafone S.à r.l., 15 rue Edward Steichen,  
L-2540 Luxembourg, Grand-Duché de  
Luxembourg

© 2022 Vodafone Limited. All rights reserved to Vodafone or third party licensors and materials may not be used in any way or copied in whole or part without prior written permission of Vodafone Limited. Vodafone and the Vodafone logo are trademarks of Vodafone Group Plc or its associated companies.

LTE FDD Band 28 (800 MHz)	25 dBm
LTE TDD Band 38 (2600 MHz)	25 dBm



## Disposal of Your Old Appliance

- When this crossed-out wheeled bin symbol is attached to a product, it means the product is covered by the European Directive 2012/19/EU.
- All electrical and electronic products should be disposed separately from household waste via specially designated local authority collection or disposal facilities.
- The correct disposal of your old appliance will help prevent potential negative consequences for the environment and human health.

## Specification

This radio equipment operates with the following frequency bands and maximum radio-frequency power.

**NOTE:**This product is compliant with the power limits required by the European Union. Frequency bands supported by the product vary by model.

Services	Power Level (Maximum)
GSM 850 MHz	35 dBm
GSM 900 MHz	35 dBm
GSM 1800 MHz	32 dBm
GSM 1900 MHz	32 dBm
UMTS Band 1 (2100 MHz)	25 dBm
UMTS Band 8 (900 MHz)	25 dBm
LTE FDD Band 1 (2100 MHz)	25 dBm
LTE FDD Band 3 (1800 MHz)	25 dBm
LTE FDD Band 7 (2600 MHz)	25 dBm
LTE FDD Band 8 (900 MHz)	25 dBm
LTE FDD Band 20 (DD800MHz)	25 dBm

## Software Information

The product software version is BD\_M300zV1.1 or later. Software updates will be released to enhance usability of the product.

## Software Updates

By continuing to use this device, you indicate that you have read and agree to the following content:

In order to provide better service, this device will automatically obtain software update information from ZTE and Vodafone after connecting to the Internet. This process may use mobile data, and requires access to your device's unique identifier (IMEI/SN) and the service provider network ID (PLMN) to check whether your device needs to be updated.

Note that neither ZTE nor Vodafone will use the IMEI/SN information for the purposes of personally identifying you, this is only used for scheduling/managing software updates. If you do not wish for the updates to be carried out automatically then this can be disabled in the settings menu. ZTE and Vodafone recommend to leave this function enabled since software enhancements and security updates cannot be applied any longer if automatic update has been disabled.

## Interference in cars

Please note that because of possible interference to electronic equipment, some vehicle manufacturers forbid the use of devices in their vehicles unless an external antenna is included in the installation.

## Explosive environments

### Petrol stations and explosive atmospheres

In locations with potentially explosive atmospheres, obey all posted signs to turn off wireless devices such as your device or other radio equipment.

Areas with potentially explosive atmospheres include fuelling areas, below decks on boats, fuel or chemical transfer or storage facilities, areas where the air contains chemicals or particles, such as grain, dust, or metal powders.

### Blasting Caps and Areas

Turn off your device or wireless device when in a blasting area or in areas posted turn off "two-way radios" or "electronic devices" to avoid interfering with blasting operations.

## Hearing Aids

People with hearing aids or other cochlear implants may experience interfering noises when using wireless devices or when one is nearby.

The level of interference will depend on the type of hearing device and the distance from the interference source, increasing the separation between them may reduce the interference. You may also consult your hearing aid manufacturer to discuss alternatives.

## Medical devices

Please consult your doctor and the device manufacturer to determine if operation of your device may interfere with the operation of your medical device.

## Hospitals

Switch off your wireless device when requested to do so in hospitals, clinics or health care facilities. These requests are designed to prevent possible interference with sensitive medical equipment.

## Aircraft

Switch off your wireless device whenever you are instructed to do so by airport or airline staff.

Consult the airline staff about the use of wireless devices on board the aircraft. If your device offers a 'flight mode' this must be enabled prior to boarding an aircraft.



02



03



04



05



06



07



10



11



12



13



14



15



18



19



20



21



22



23



26



27



28



29

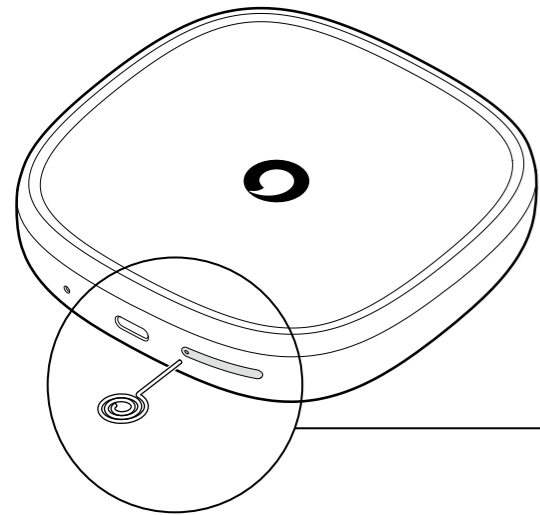


30



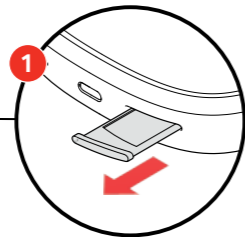
31

## 1. Open SIM tray

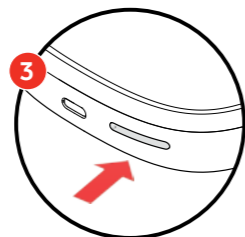


Open the SIM card tray with the pin provided.

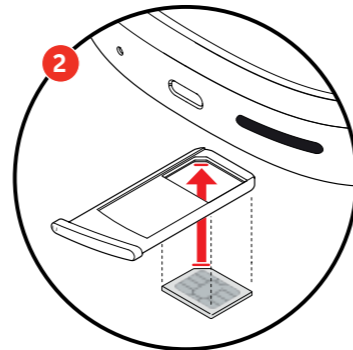
## 2. Insert SIM



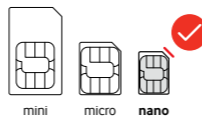
SIM tray slides out.



SIM tray slides in.

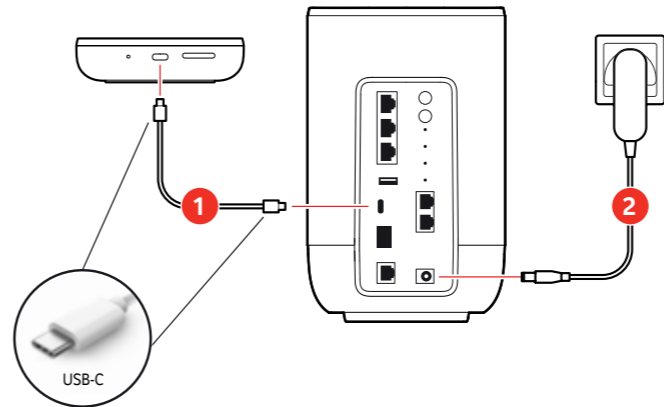


Place the nano SIM card in the SIM tray.



Check the SIM's corner for correct placement.

## 3. Plug into your Vodafone Ultra Hub



**1** Connect the USB-C cable provided into the ports shown in the diagram.

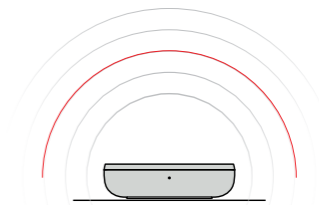
**2** Ensure your Ultra Hub is set up, powered up and ready.

## 4. Connect and ready

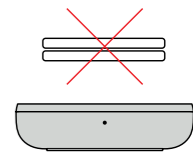
Within a few minutes the LED on the Vodafone Connect Module will turn white (see LED light status page) meaning the SIM has connected to the mobile network.

### You're good to go!

The device will now be ready to automatically provide broadband back-up if your home broadband experiences any disruption.

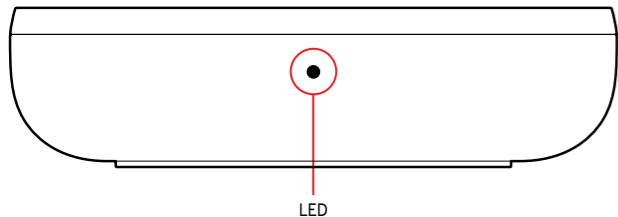


**Tip:** Place the Vodafone Connect Module in an open area, ideally close to a window.



**Tip:** Avoid covering the top.

# LED light statuses



- **Solid:** Connected to 4G network
- ◉ **Slow flash:** Connected to 3G/2G network
- ⦿ **Flash:** Error, no SIM, no mobile network
- **Solid:** Data limit reached
- ⦿ **Flash:** Ongoing software update
- ⦿ **Flash:** Power on and factory resetting

# If you need help


You can find lots of useful Vodafone Broadband information including set-up guides at [support.vodafone.co.uk/Broadband](https://support.vodafone.co.uk/Broadband)

## Prefer to contact us?

You can reach us via TOBi, our digital webchat assistant by scanning this QR code or visiting [vodafone.co.uk/contact-us](https://vodafone.co.uk/contact-us)



Alternatively you could call us on 191 from your Vodafone mobile or 0333 040 191 from any other mobile or landline (standard charges apply). Please ensure you have your account details ready.

 Made from 100% recycled paper

 Printed with soy ink

# Vodafone Connect Module

4G Broadband Back-up  
Quick start guide

