

Appendix A: SAR System performance Check Plots

Measurement	Liquid	Frequency	Test Date
System Check	Head	750	2018-12-23
System Check	Body	750	2018-12-23
System Check	Head	850	2018-12-17
System Check	Body	850	2018-12-17
System Check	Head	1800	2018-12-18
System Check	Body	1800	2018-12-18
System Check	Head	1900	2018-12-18
System Check	Body	1900	2018-12-18
System Check	Head	2450	2018-12-19
System Check	Body	2450	2018-12-19
System Check	Head	2600	2018-12-20
System Check	Body	2600	2018-12-20
System Check	Head	5200	2018-12-24
System Check	Body	5200	2018-12-24
System Check	Head	5800	2018-12-25
System Check	Body	5800	2018-12-25
System Check	Head	2450	2019-1-9
System Check	Body	2450	2019-1-9
System Check	Head	2600	2019-1-10
System Check	Body	2600	2019-1-10

System Performance Check (Head, 750MHz)

Type: Phone measurement

Area scan resolution: dx=8mm,dy=8mm

Zoom scan resolution: dx=8mm, dy=8mm, dz=5mm

Date of measurement: 12/23/2018

Measurement duration: 22 minutes 15 seconds

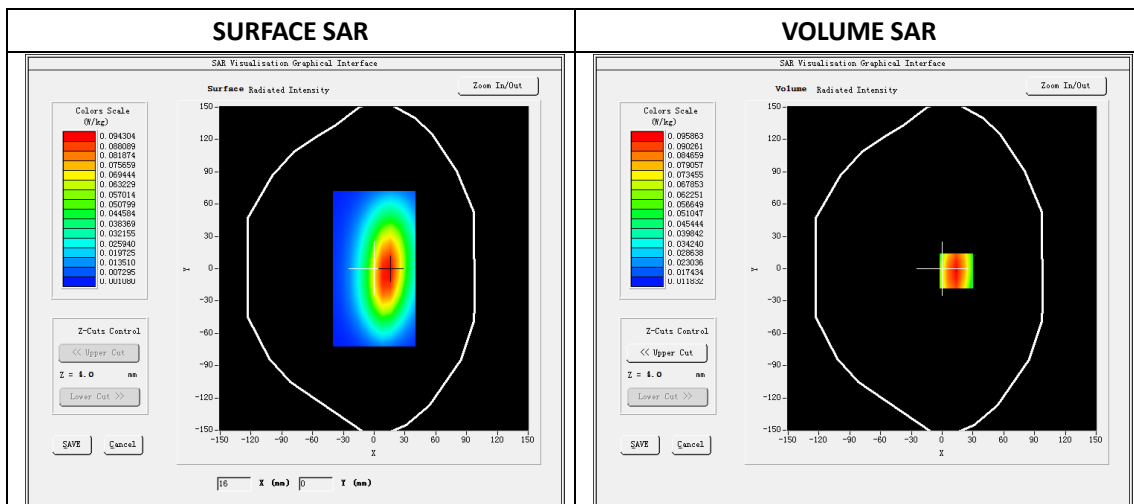
A. Experimental conditions.

Phantom File	dx=8mm dy=8mm
Phantom	5x5x7,dx=8mm dy=8mm dz=5mm
Device Position	Dipole
Band	750MHz
Channels	
Signal	CW

B. SAR Measurement Results

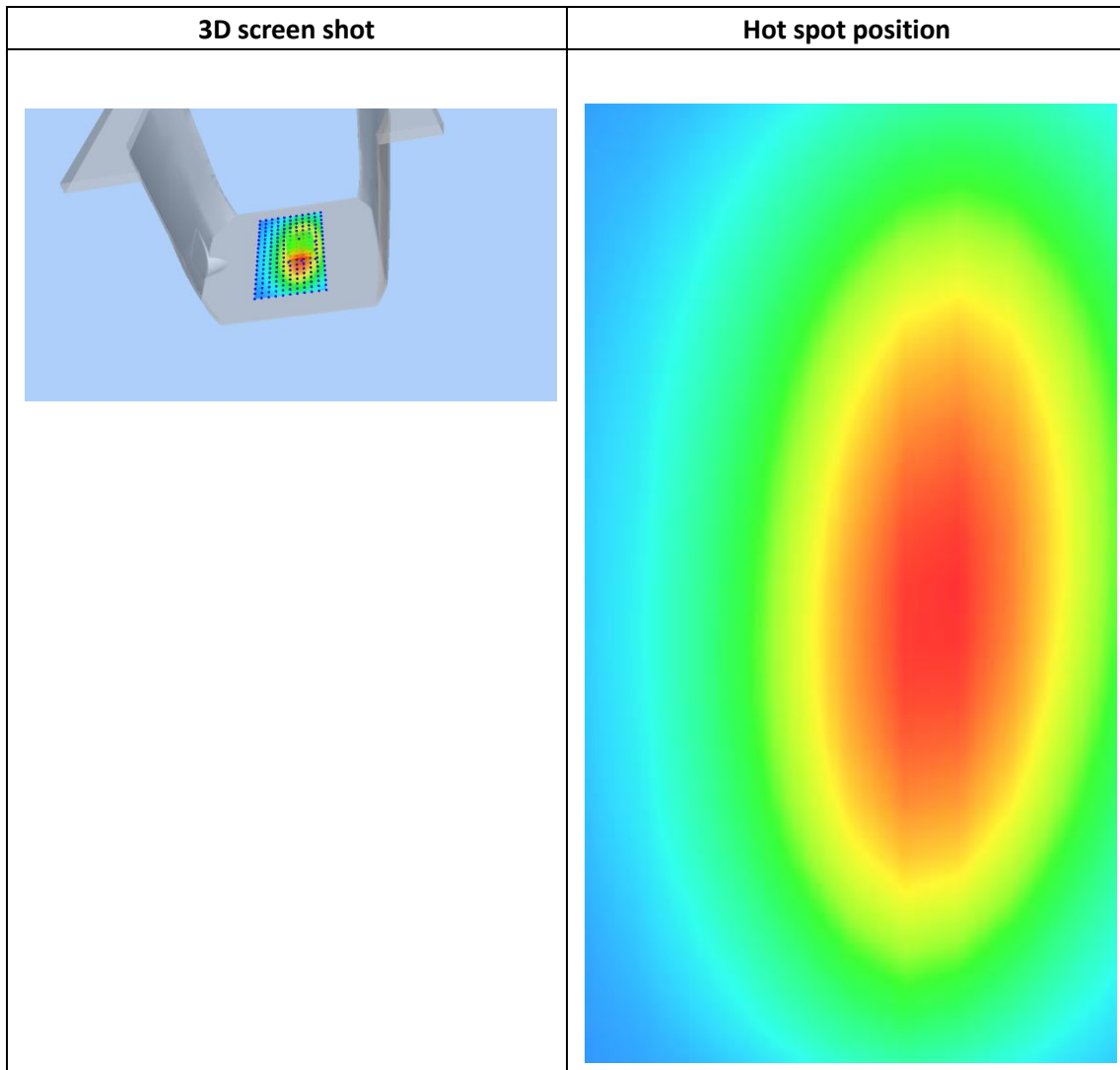
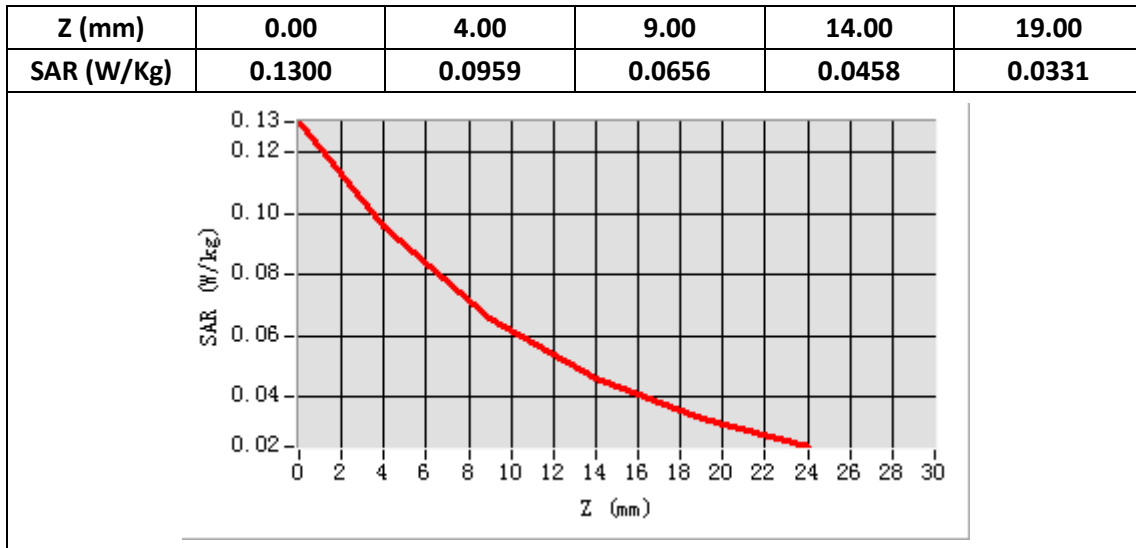
Band SAR

E-Field Probe	SATIMO SN_04/13_EP166
Frequency (MHz)	750
Relative permittivity (real part)	41.9
Relative permittivity	21.12
Conductivity (S/m)	0.88
Power drift (%)	-0.28
Ambient Temperature:	22.2°C
Liquid Temperature:	22.6°C
ConvF:	5.74
Crest factor:	1:1



Maximum location: X=1400, Y=-2.00

SAR 10g (W/Kg)	0.058289
SAR 1g (W/Kg)	0.086905



System Performance Check (Body, 750MHz)

Type: Phone measurement

Area scan resolution: dx=8mm,dy=8mm

Zoom scan resolution: dx=8mm, dy=8mm, dz=5mm

Date of measurement: 12/23/2018

Measurement duration: 22 minutes 17 seconds

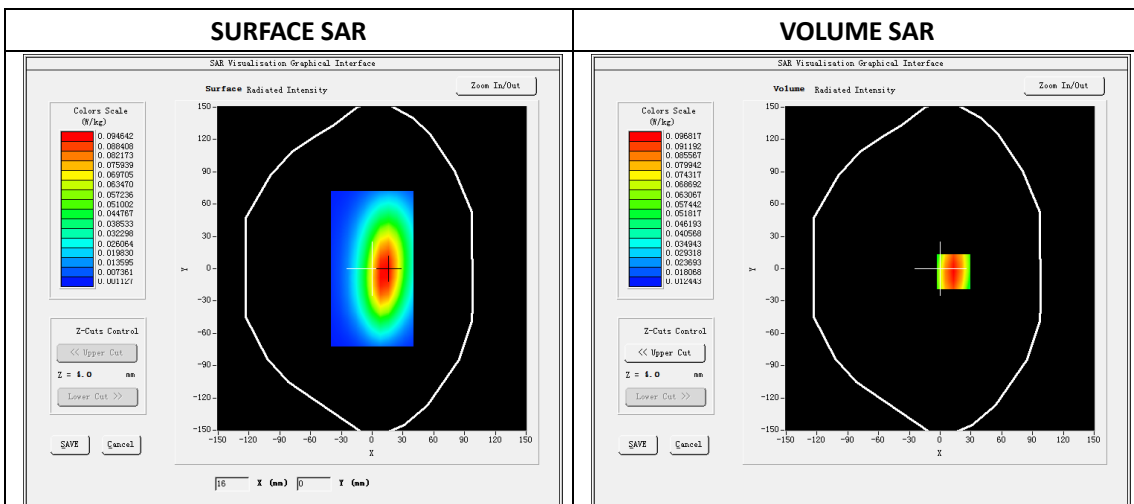
A. Experimental conditions.

Phantom File	dx=8mm dy=8mm
Phantom	5x5x7,dx=8mm dy=8mm dz=5mm
Device Position	Dipole
Band	750MHz
Channels	
Signal	CW

B. SAR Measurement Results

Band SAR

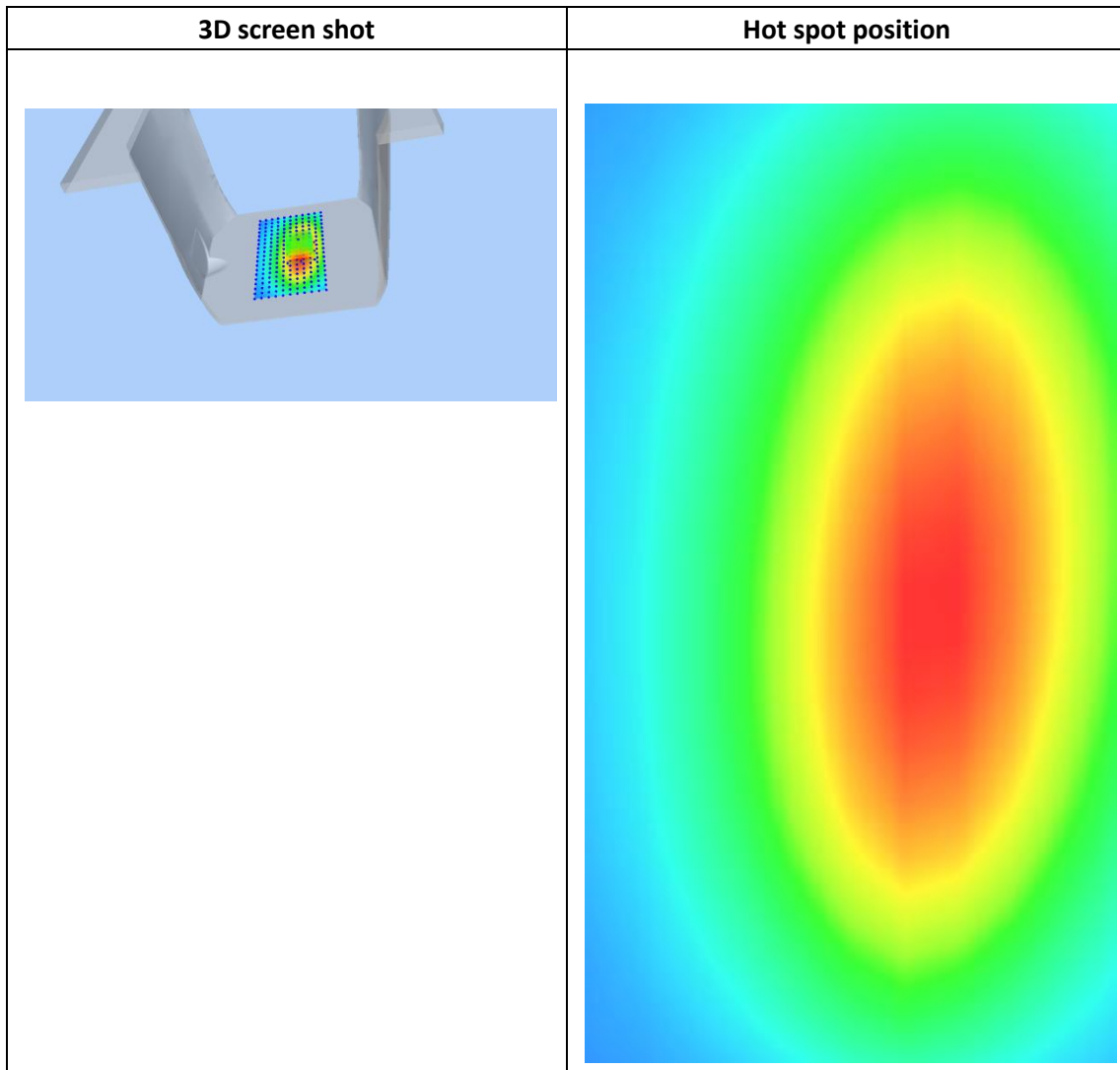
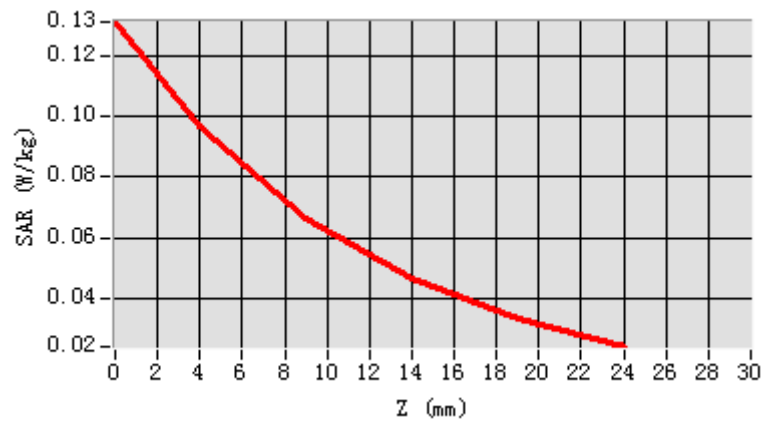
E-Field Probe	SATIMO SN_04/13_EP166
Frequency (MHz)	750
Relative permittivity (real part)	55.40
Relative permittivity	22.80
Conductivity (S/m)	0.95
Power drift (%)	-1.05
Ambient Temperature:	22.2°C
Liquid Temperature:	22.6°C
ConvF:	5.95
Crest factor:	1:1



Maximum location: X=13.00, Y=-3.00

SAR 10g (W/Kg)	0.059722
SAR 1g (W/Kg)	0.088608

Z (mm)	0.00	4.00	9.00	14.00	19.00
SAR (W/Kg)	0.1313	0.0968	0.0662	0.0462	0.0333



System Performance Check (Head, 850MHz)

Type: Phone measurement

Area scan resolution: dx=8mm,dy=8mm

Zoom scan resolution: dx=8mm, dy=8mm, dz=5mm

Date of measurement: 12/17/2018

Measurement duration: 22 minutes 15 seconds

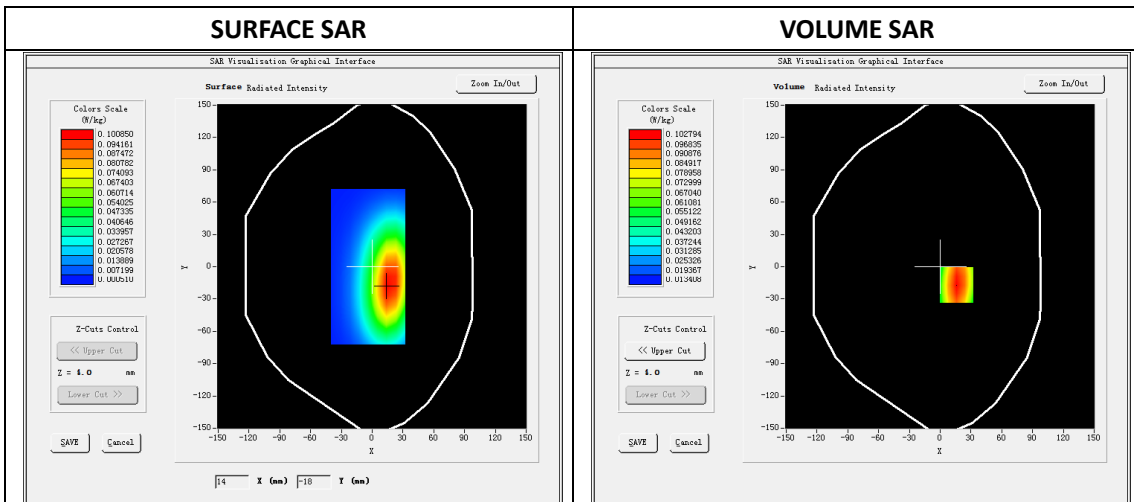
A. Experimental conditions.

Phantom File	dx=8mm dy=8mm
Phantom	5x5x7,dx=8mm dy=8mm dz=5mm
Device Position	Dipole
Band	850MHz
Channels	
Signal	CW

B. SAR Measurement Results

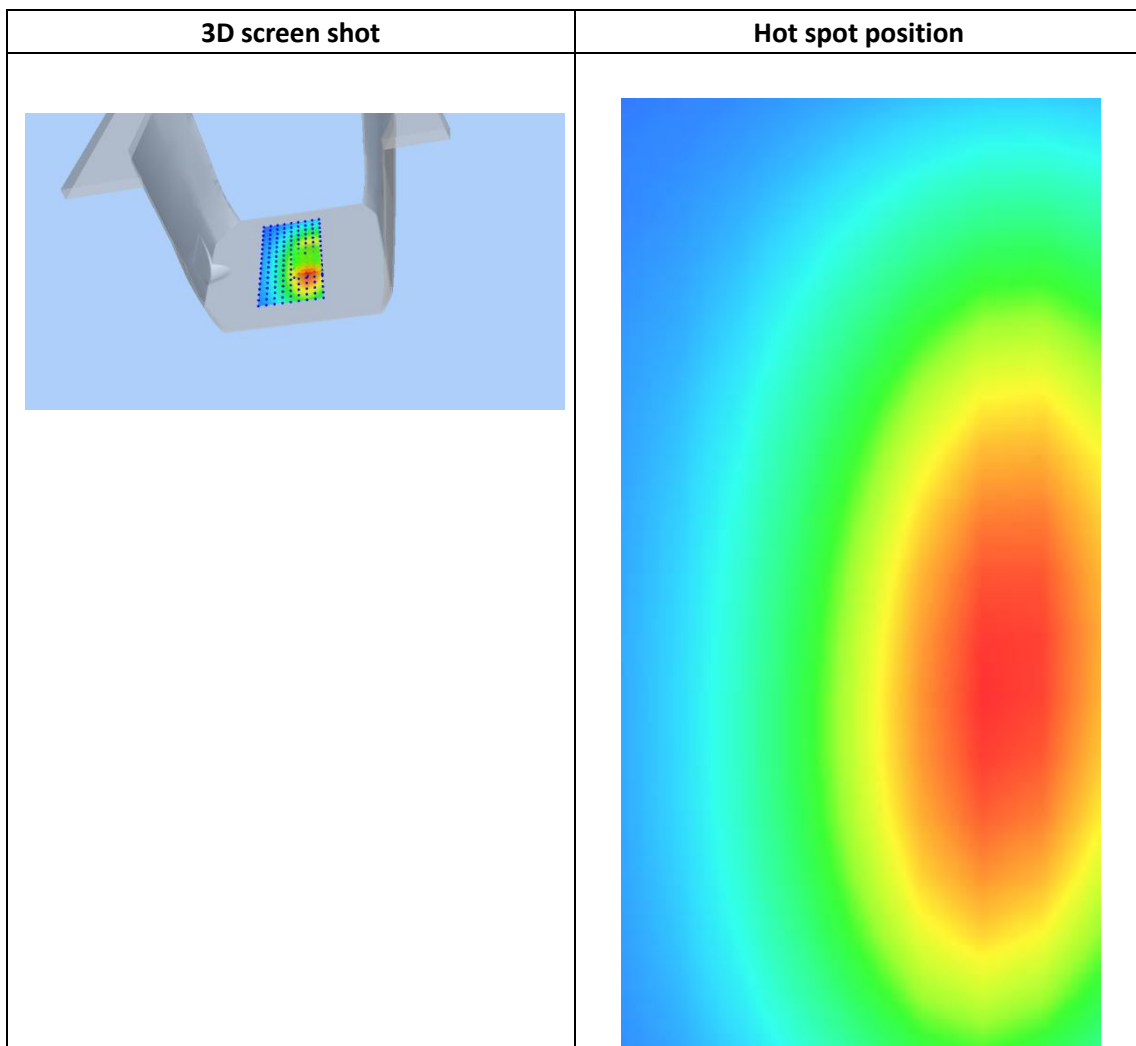
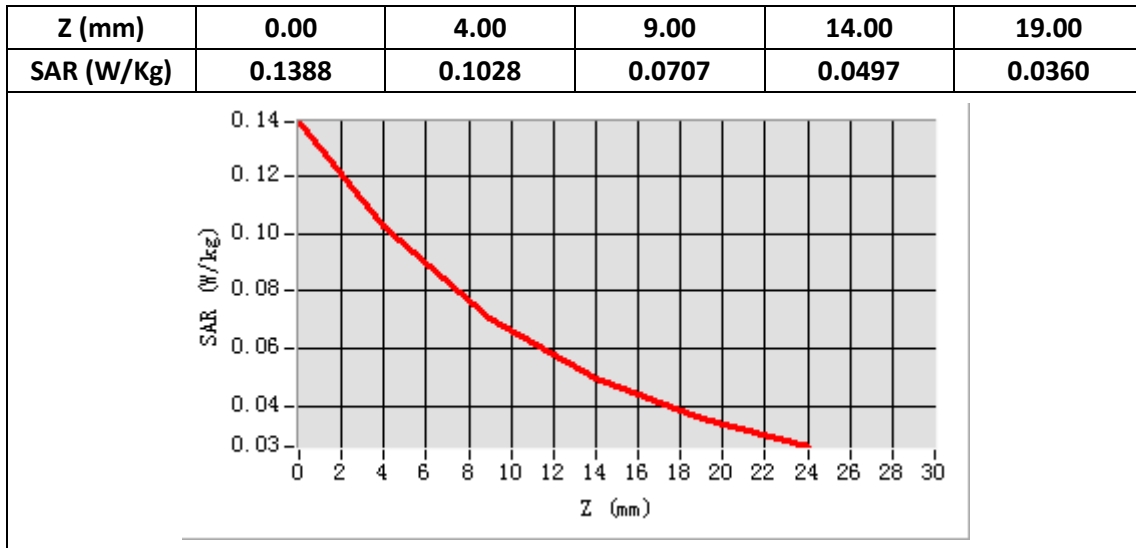
Band SAR

E-Field Probe	SATIMO SN_04/13_EP166
Frequency (MHz)	850
Relative permittivity (real part)	41.3
Relative permittivity	19.18
Conductivity (S/m)	0.89
Power drift (%)	-0.21
Ambient Temperature:	22.2°C
Liquid Temperature:	22.6°C
ConvF:	5.85
Crest factor:	1:1



Maximum location: X=16.00, Y=-17.00

SAR 10g (W/Kg)	0.064481
SAR 1g (W/Kg)	0.097838



System Performance Check (Body, 850MHz)

Type: Phone measurement

Area scan resolution: dx=8mm,dy=8mm

Zoom scan resolution: dx=8mm, dy=8mm, dz=5mm

Date of measurement: 12/17/2018

Measurement duration: 22 minutes 17 seconds

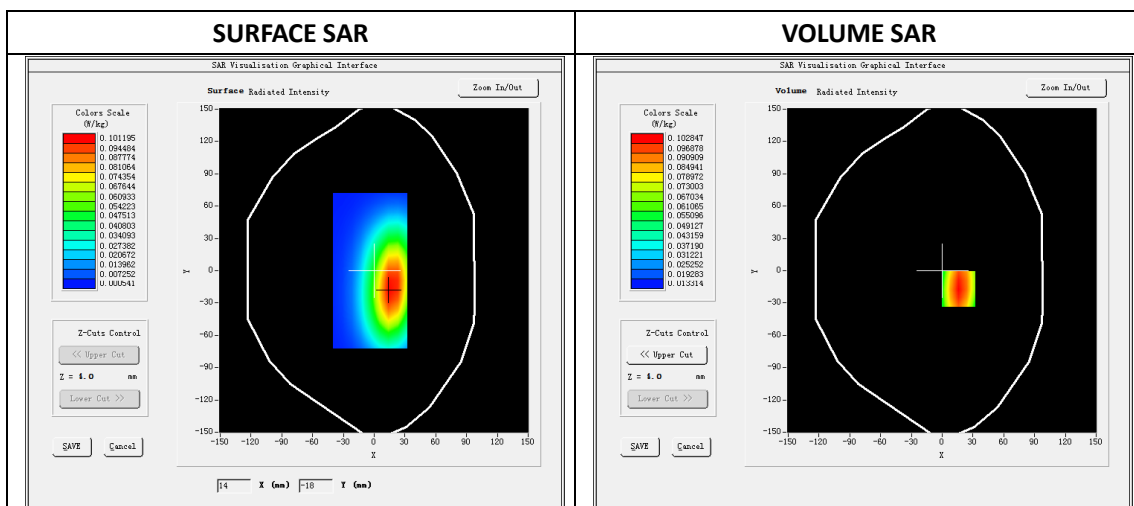
A. Experimental conditions.

Phantom File	dx=8mm dy=8mm
Phantom	5x5x7,dx=8mm dy=8mm dz=5mm
Device Position	Dipole
Band	850MHz
Channels	
Signal	CW

B. SAR Measurement Results

Band SAR

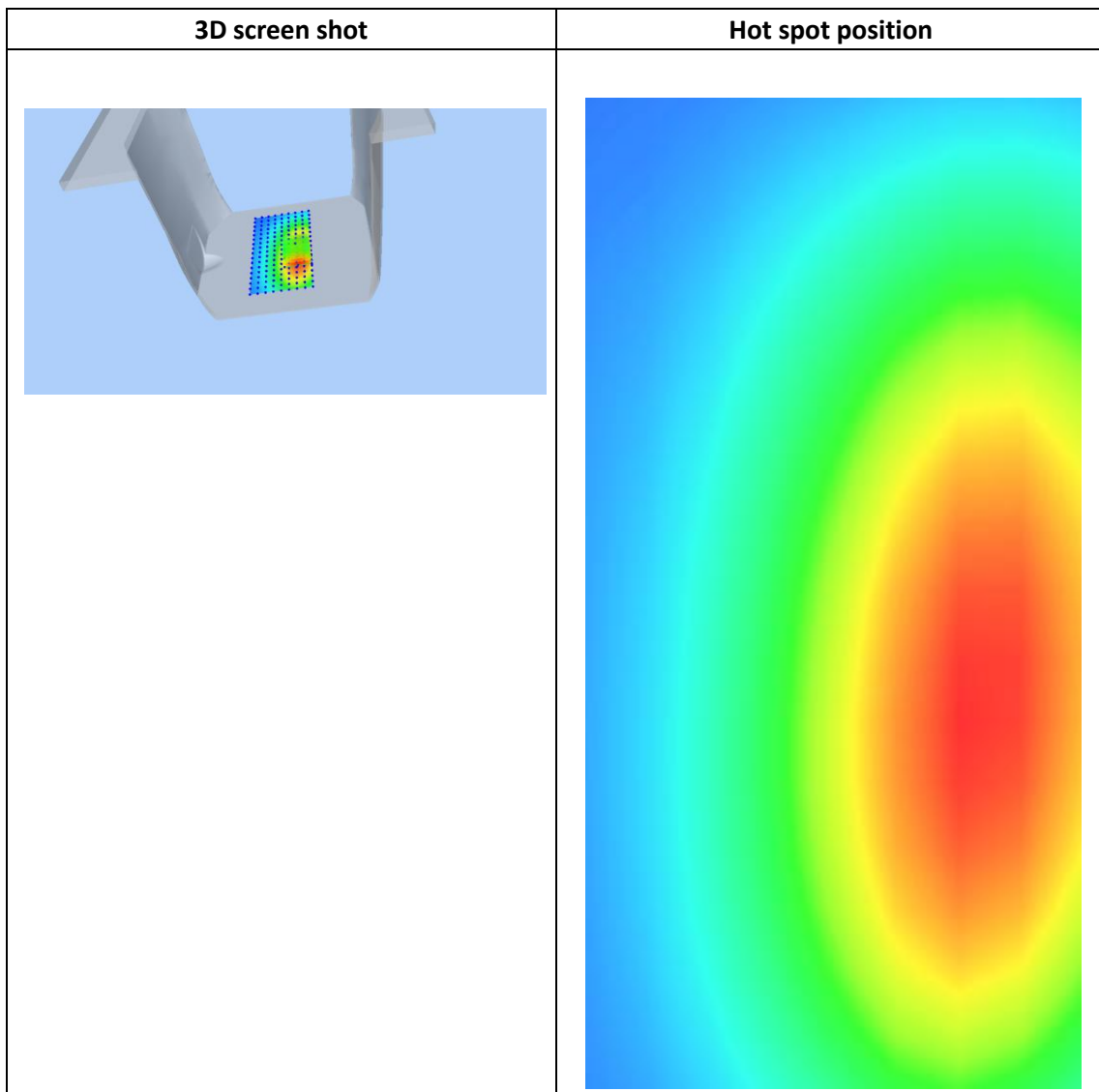
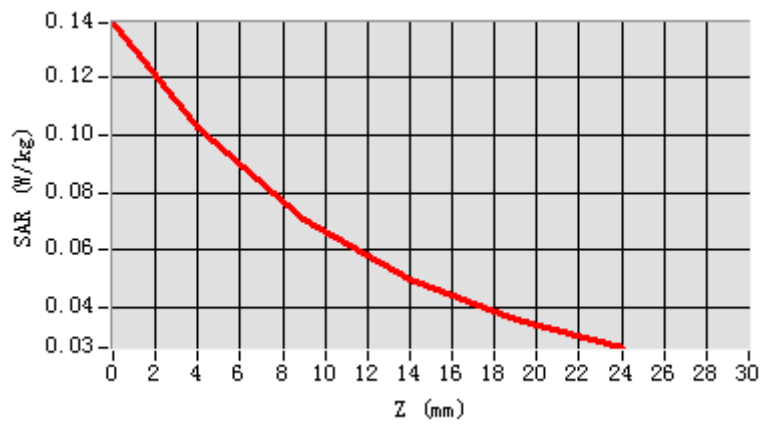
E-Field Probe	SATIMO SN_04/13_EP166
Frequency (MHz)	850
Relative permittivity (real part)	55.12
Relative permittivity	20.69
Conductivity (S/m)	0.96
Power drift (%)	-0.89
Ambient Temperature:	22.2°C
Liquid Temperature:	22.6°C
ConvF:	6.17
Crest factor:	1:1



Maximum location: X=16.00, Y=-17.00

SAR 10g (W/Kg)	0.064393
SAR 1g (W/Kg)	0.097621

Z (mm)	0.00	4.00	9.00	14.00	19.00
SAR (W/Kg)	0.1391	0.1028	0.0706	0.0495	0.0358



System Performance Check (Head, 1800MHz)

Type: Validation measurement

Area scan resolution: dx=8mm,dy=8mm

Zoom scan resolution: dx=8mm, dy=8mm, dz=5mm

Date of measurement: 12/18/2018

Measurement duration: 22 minutes 15 seconds

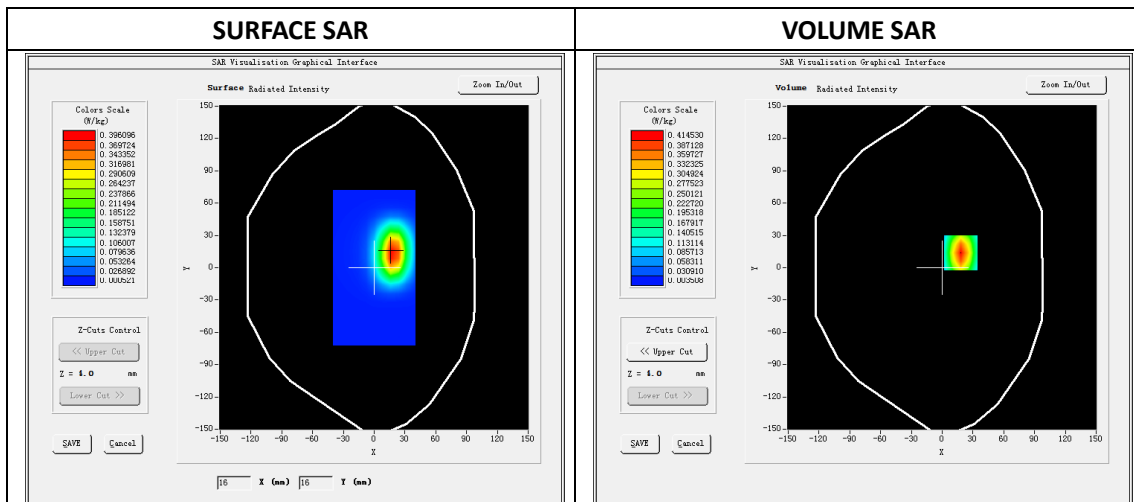
A. Experimental conditions.

Phantom File	dx=8mm dy=8mm
Phantom	5x5x7,dx=8mm dy=8mm dz=5mm
Device Position	Dipole
Band	1800MHz
Channels	
Signal	CW

B. SAR Measurement Results

Band SAR

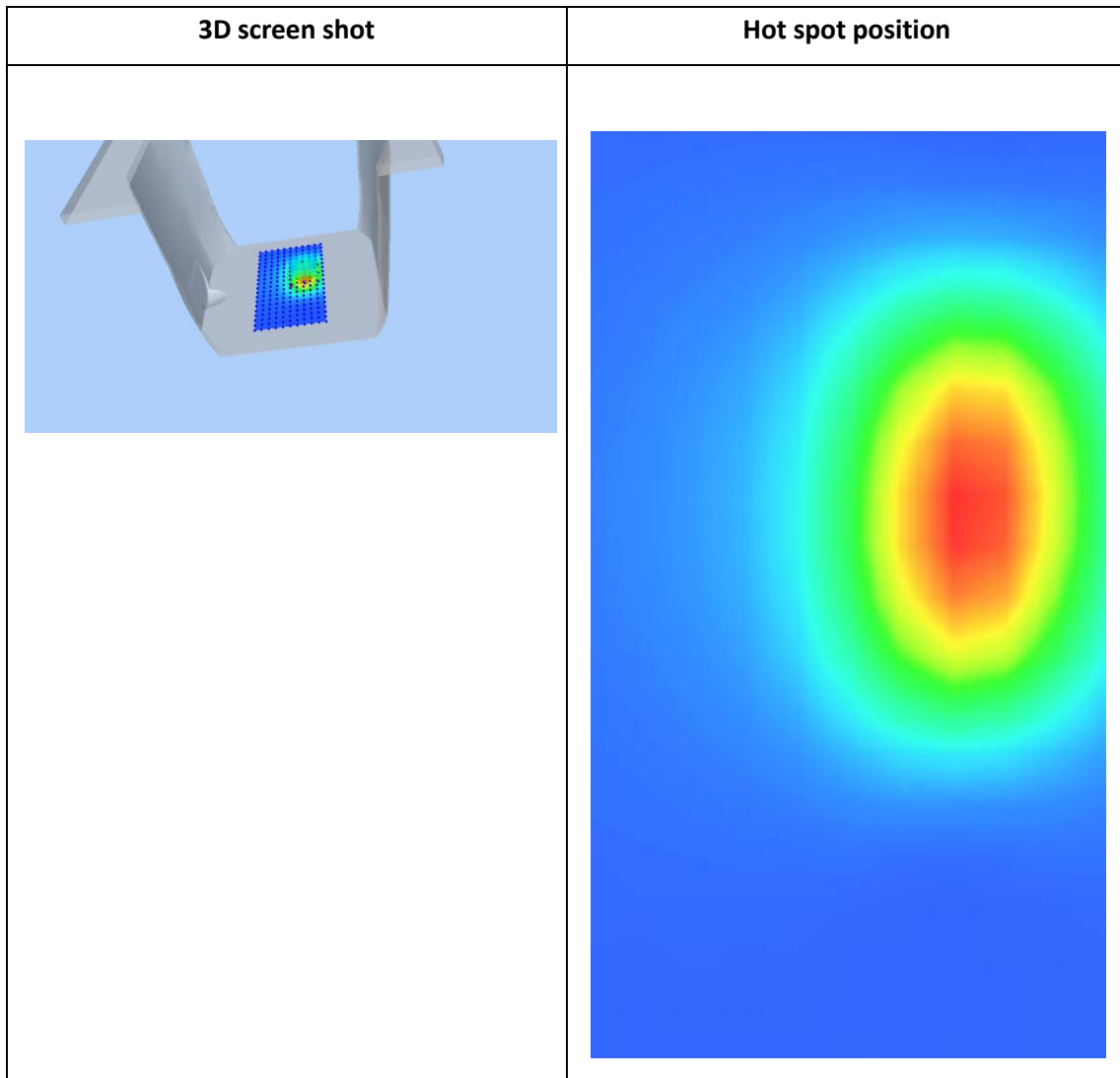
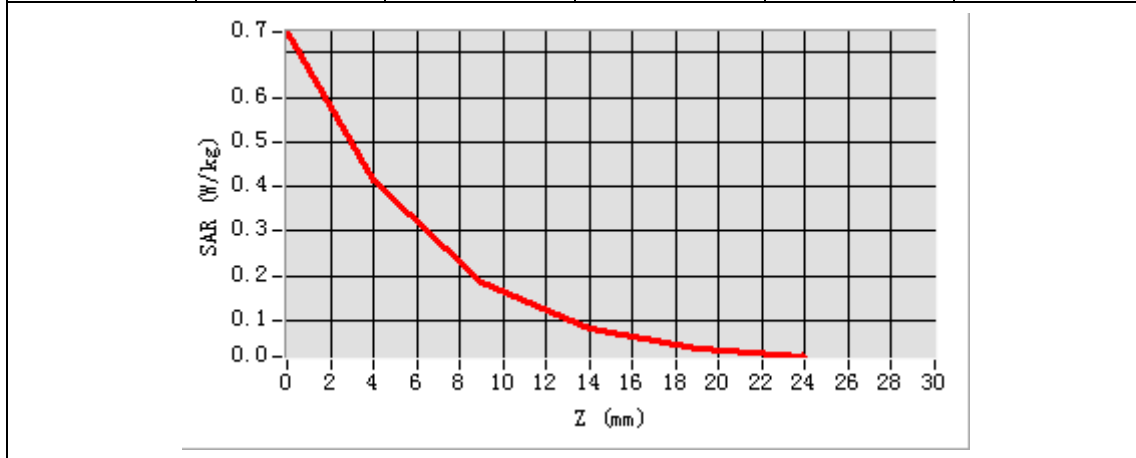
E-Field Probe	SATIMO SN_04/13_EP166
Frequency (MHz)	1800
Relative permittivity (real part)	40.45
Relative permittivity	14.10
Conductivity (S/m)	1.41
Power Drift (%)	-0.50
Ambient Temperature:	22.1°C
Liquid Temperature:	22.6°C
ConvF:	5.43
Duty factor:	1:1



Maximum location: X=18.00, Y=14.00

SAR 10g (W/Kg)	0.179514
SAR 1g (W/Kg)	0.386079

Z (mm)	0.00	4.00	9.00	14.00	19.00
SAR (W/Kg)	0.7466	0.4145	0.1848	0.0805	0.0384



System Performance Check (Body, 1800MHz)

Type: Validation measurement

Area scan resolution: dx=8mm,dy=8mm

Zoom scan resolution: dx=8mm, dy=8mm, dz=5mm

Date of measurement: 12/18/2018

Measurement duration: 22 minutes 23 seconds

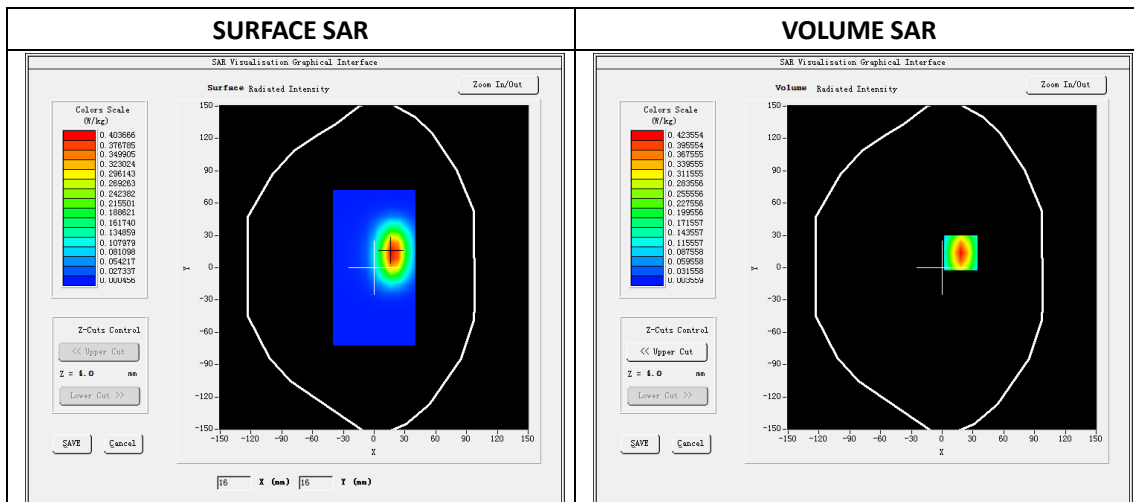
A. Experimental conditions.

Phantom File	dx=8mm dy=8mm
Phantom	5x5x7,dx=8mm dy=8mm dz=5mm
Device Position	Dipole
Band	1800MHz
Channels	
Signal	CW

B. SAR Measurement Results

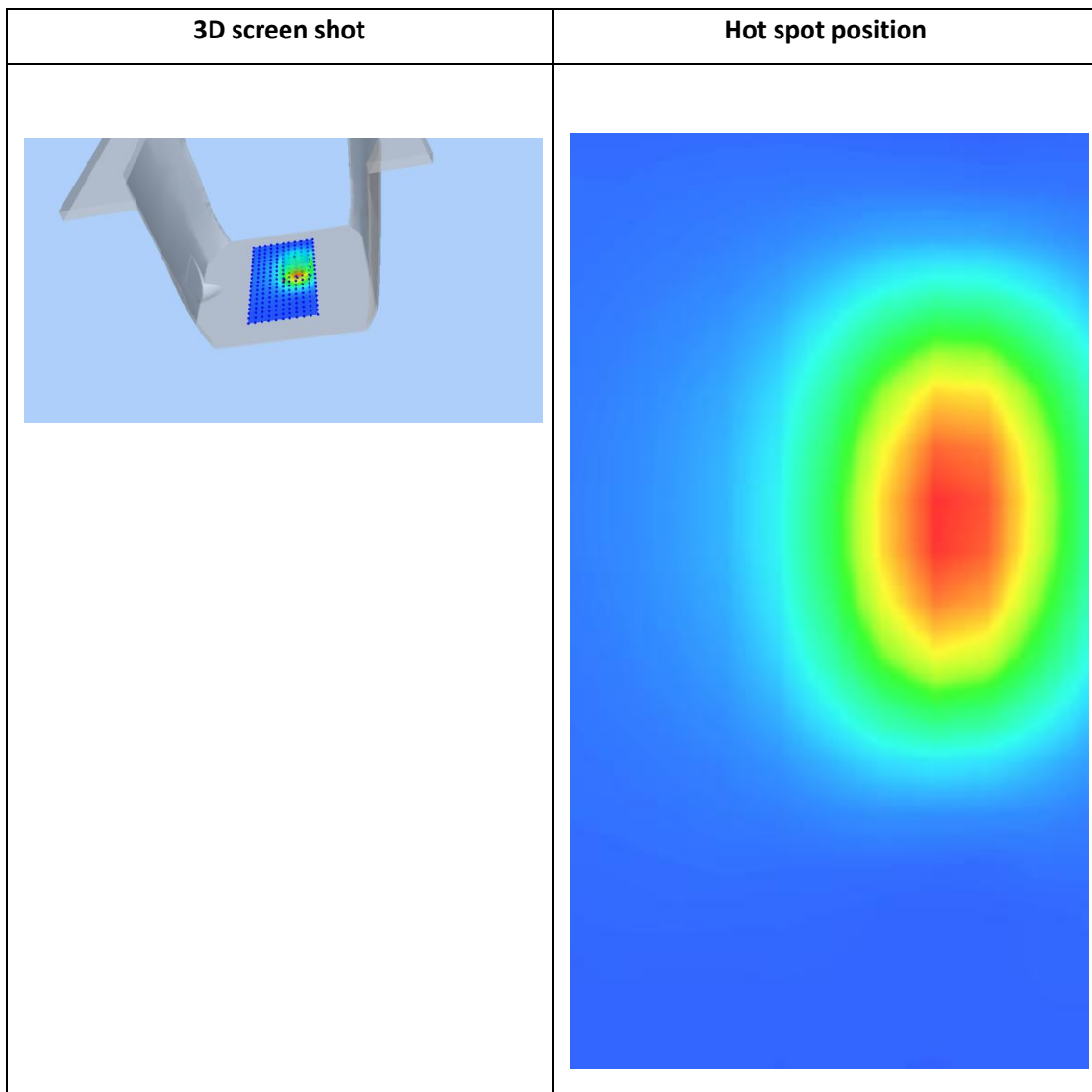
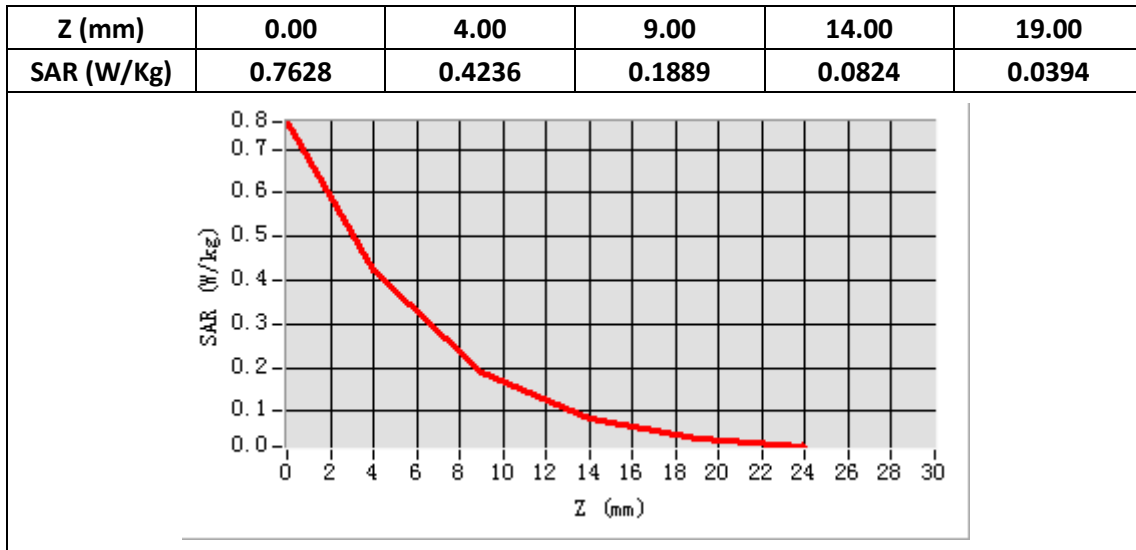
Band SAR

E-Field Probe	SATIMO SN_04/13_EP166
Frequency (MHz)	1800
Relative permittivity (real part)	53.36
Relative permittivity	15.30
Conductivity (S/m)	1.53
Power Drift (%)	-0.24
Ambient Temperature:	22.1°C
Liquid Temperature:	22.6°C
ConvF:	5.60
Duty factor:	1:1



Maximum location: X=18.00, Y=14.00

SAR 10g (W/Kg)	0.183322
SAR 1g (W/Kg)	0.394447



System Performance Check (Head, 1900MHz)

Type: Validation measurement

Area scan resolution: dx=8mm,dy=8mm

Zoom scan resolution: dx=8mm, dy=8mm, dz=5mm

Date of measurement: 12/18/2018

Measurement duration: 22 minutes 21 seconds

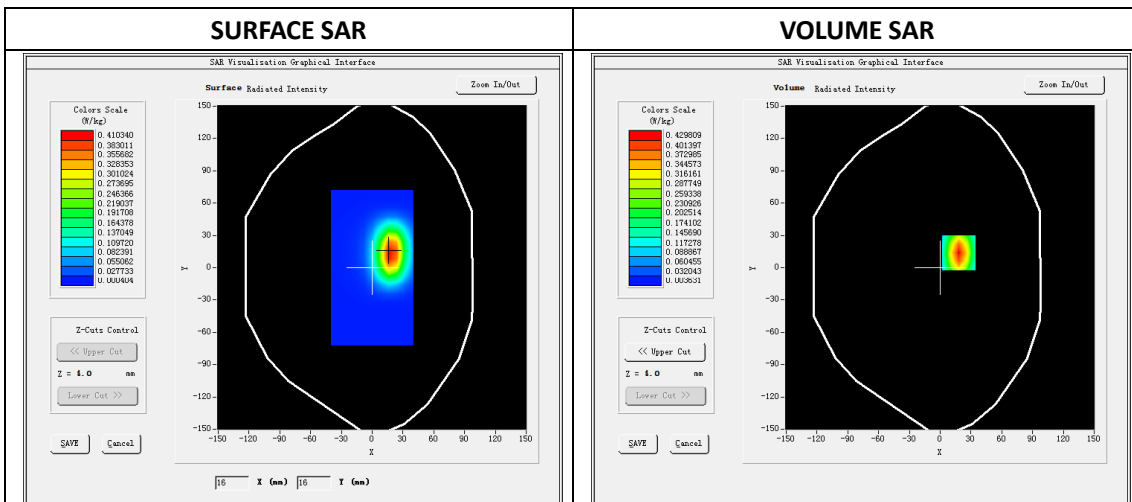
A. Experimental conditions.

Phantom File	dx=8mm dy=8mm
Phantom	5x5x7,dx=8mm dy=8mm dz=5mm
Device Position	Dipole
Band	1900MHz
Channels	
Signal	CW

B. SAR Measurement Results

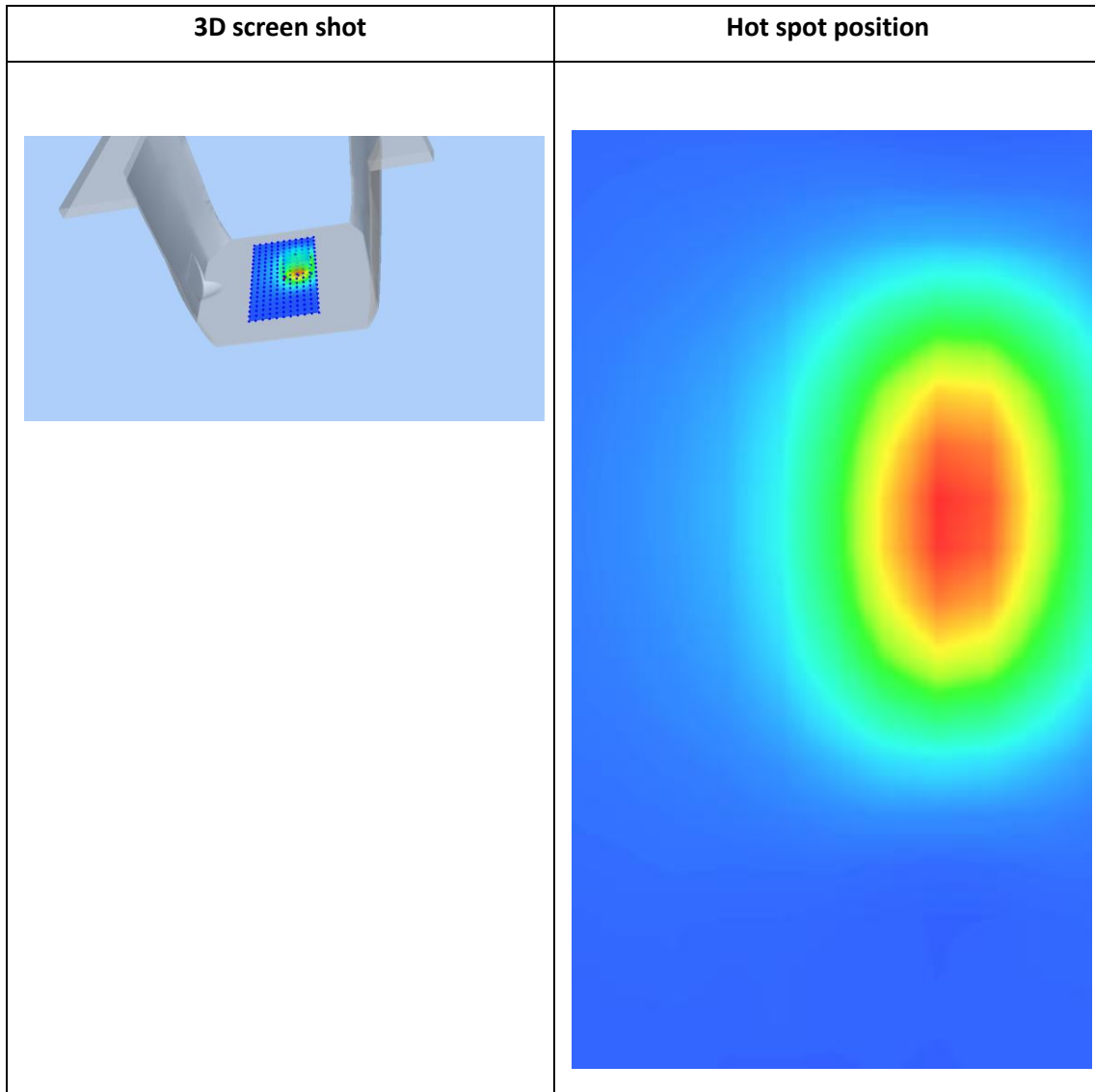
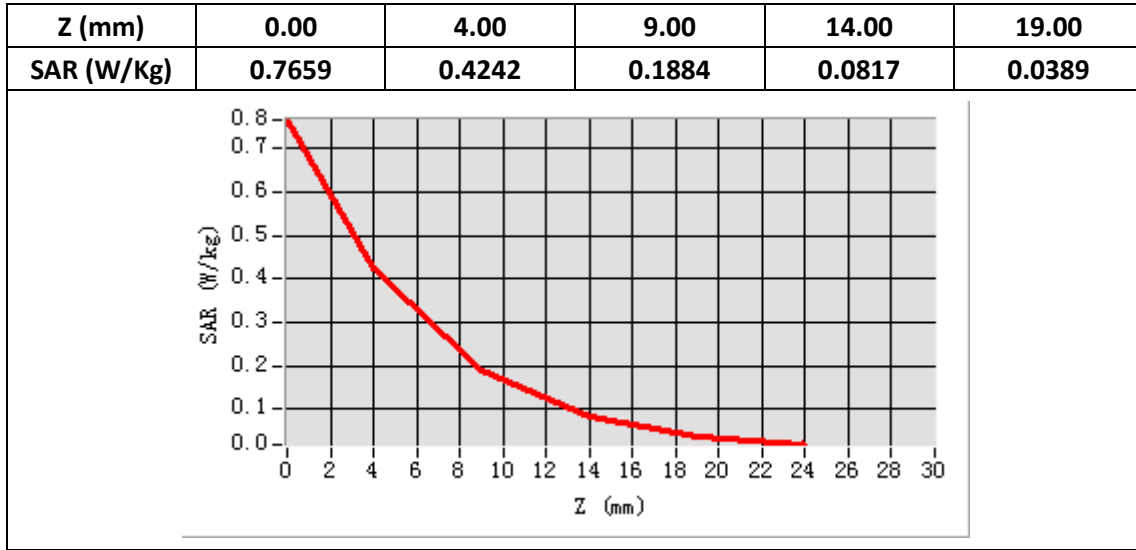
Band SAR

E-Field Probe	SATIMO SN_04/13_EP166
Frequency (MHz)	1900
Relative permittivity (real part)	40.51
Relative permittivity	13.45
Conductivity (S/m)	1.42
Power Drift (%)	-0.26
Ambient Temperature:	22.1°C
Liquid Temperature:	22.6°C
ConvF:	5.90
Duty factor:	1:1



Maximum location: X=18.00, Y=14.00

SAR 10g (W/Kg)	0.183541
SAR 1g (W/Kg)	0.395193



System Performance Check (Body, 1900MHz)

Type: Validation measurement

Area scan resolution: dx=8mm,dy=8mm

Zoom scan resolution: dx=8mm, dy=8mm, dz=5mm

Date of measurement: 12/18/2018

Measurement duration: 22 minutes 22 seconds

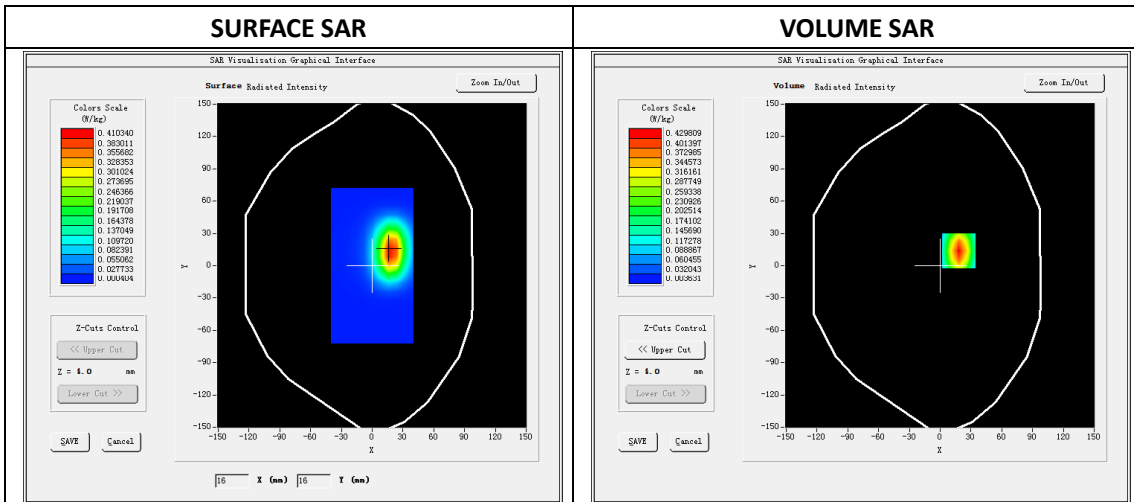
A. Experimental conditions.

Phantom File	dx=8mm dy=8mm
Phantom	5x5x7,dx=8mm dy=8mm dz=5mm
Device Position	Dipole
Band	1900MHz
Channels	
Signal	CW

B. SAR Measurement Results

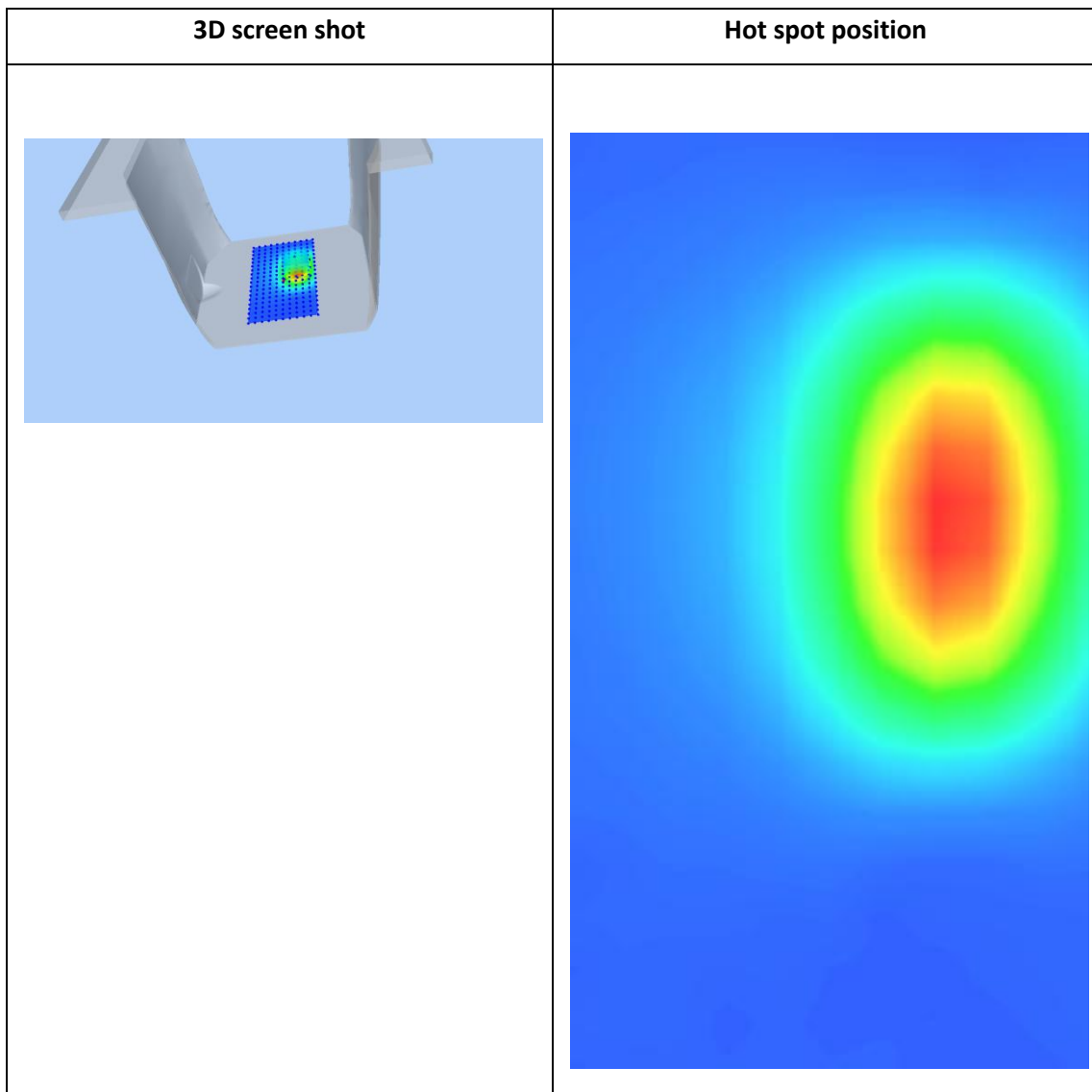
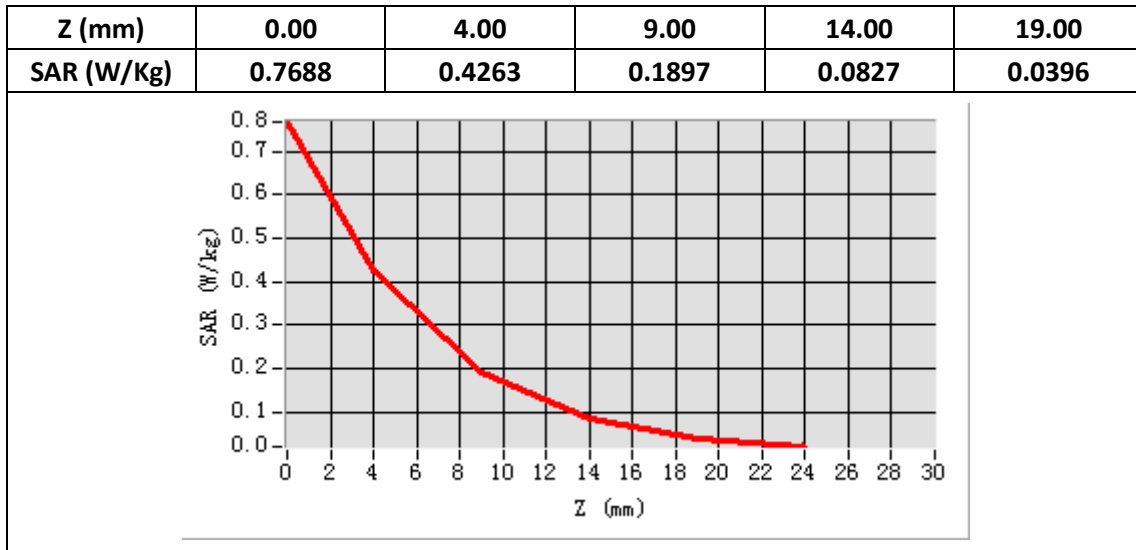
Band SAR

E-Field Probe	SATIMO SN_04/13_EP166
Frequency (MHz)	1900
Relative permittivity (real part)	53.32
Relative permittivity	14.30
Conductivity (S/m)	1.51
Power Drift (%)	-0.10
Ambient Temperature:	22.1°C
Liquid Temperature:	22.6°C
ConvF:	6.10
Duty factor:	1:1



Maximum location: X=18.00, Y=14.00

SAR 10g (W/Kg)	0.184400
SAR 1g (W/Kg)	0.396980



System Performance Check (Head, 2450MHz)

Type: Phone measurement

Area scan resolution: dx=8mm,dy=8mm

Zoom scan resolution: dx=5mm, dy=5mm, dz=4mm

Date of measurement: 12/19/2018

Measurement duration: 22 minutes 11 seconds

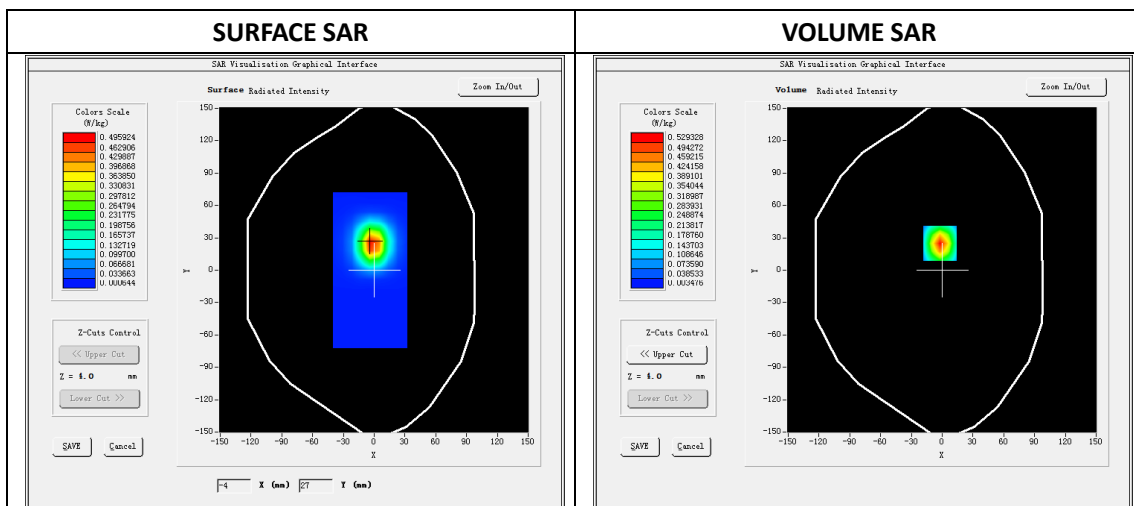
A. Experimental conditions.

Phantom File	dx=8mm dy=8mm
Phantom	7x7x8,dx=5mm dy=5mm dz=4mm
Device Position	Dipole
Band	2450MHz
Channels	
Signal	CW

B. SAR Measurement Results

Band SAR

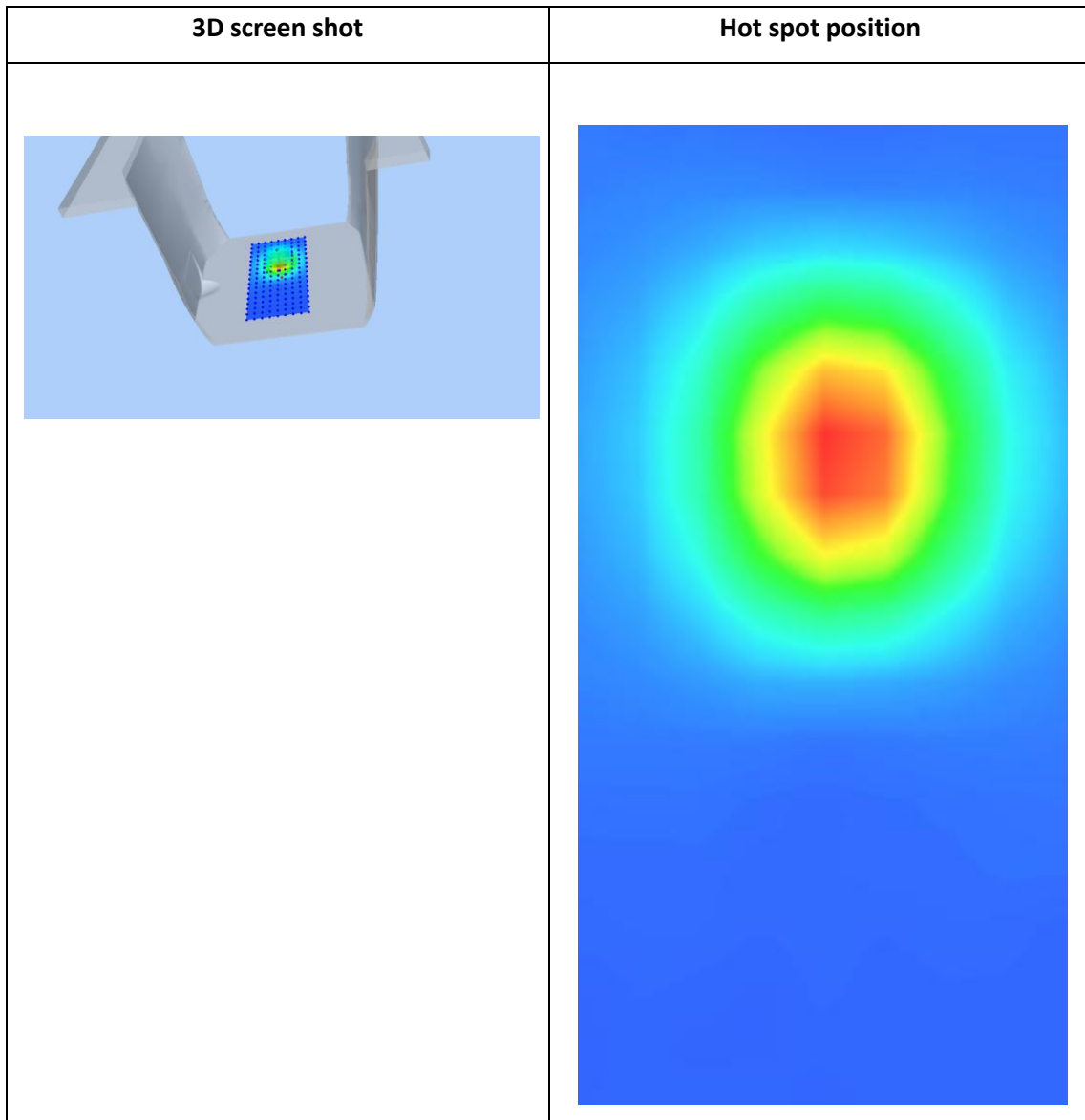
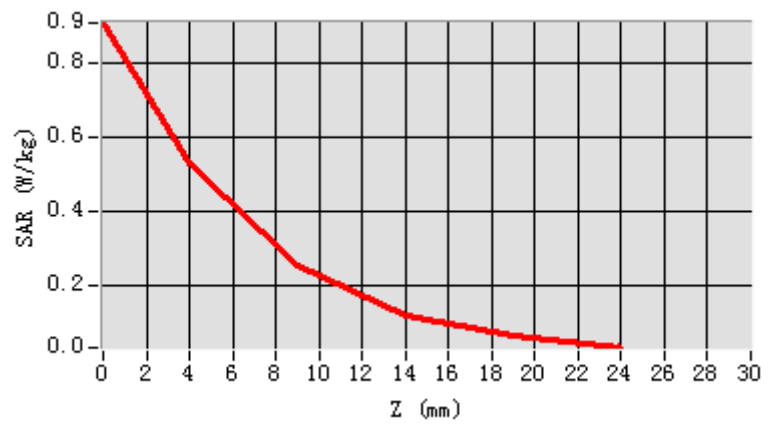
E-Field Probe	SATIMO SN_04/13_EP166
Frequency (MHz)	2450
Relative permittivity (real part)	39.10
Relative permittivity	13.37
Conductivity (S/m)	1.82
Power Drift (%)	-0.85
Duty factor:	1:1
ConvF:	5.35



Maximum location: X=-2.00, Y=25.00

SAR 10g (W/Kg)	0.226678
SAR 1g (W/Kg)	0.511796

Z (mm)	0.00	4.00	9.00	14.00	19.00
SAR (W/Kg)	0.9105	0.5293	0.2545	0.1212	0.0620



System Performance Check (Body, 2450MHz)

Type: Phone measurement

Area scan resolution: dx=8mm,dy=8mm

Zoom scan resolution: dx=5mm, dy=5mm, dz=4mm

Date of measurement: 12/19/2018

Measurement duration: 22 minutes 38 seconds

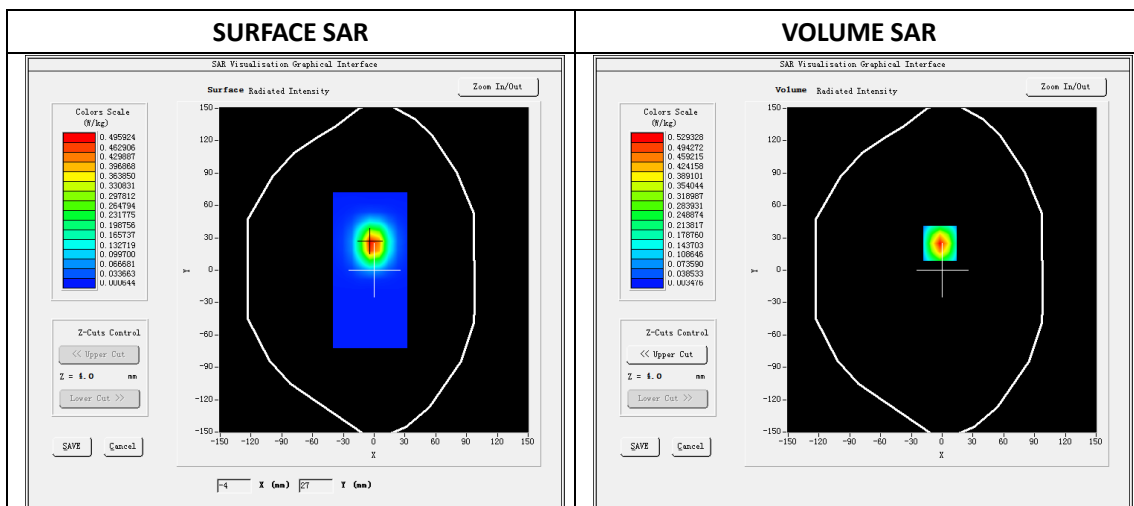
A. Experimental conditions.

Phantom File	dx=8mm dy=8mm
Phantom	7x7x8,dx=5mm dy=5mm dz=4mm
Device Position	Dipole
Band	2450MHz
Channels	
Signal	CW

B. SAR Measurement Results

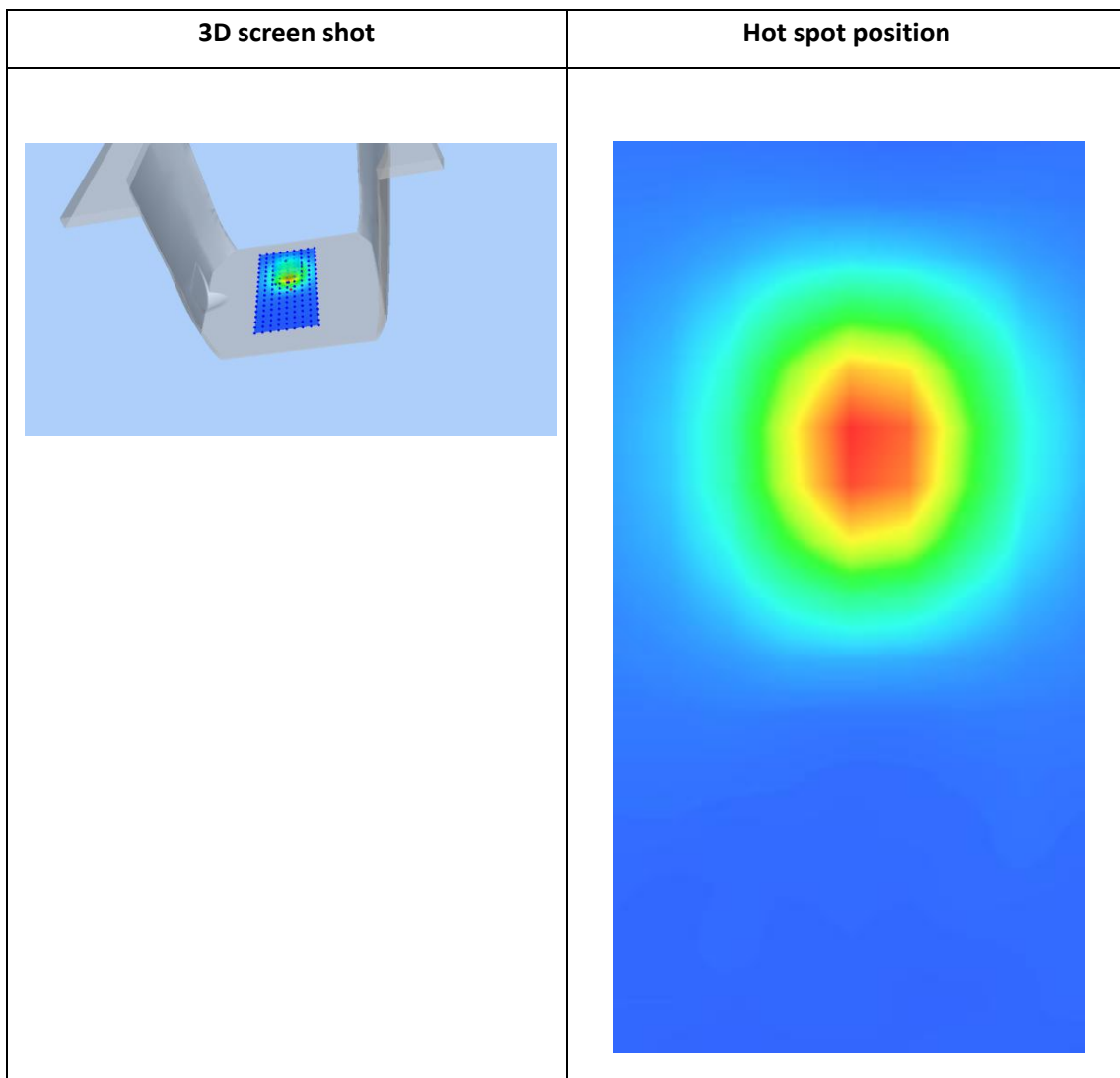
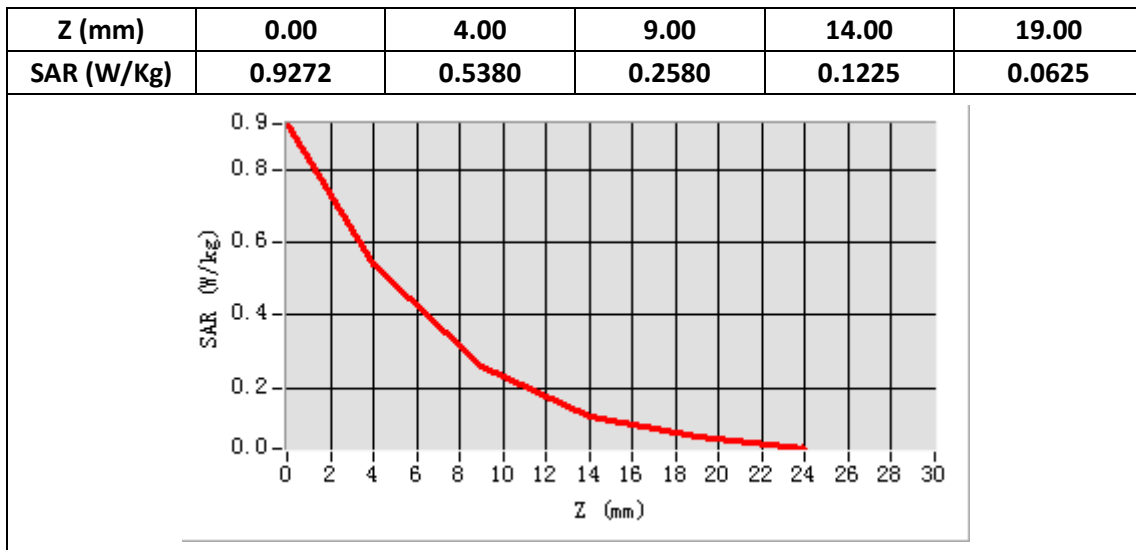
Band SAR

E-Field Probe	SATIMO SN_04/13_EP166
Frequency (MHz)	2450
Relative permittivity (real part)	52.56
Relative permittivity	14.25
Conductivity (S/m)	1.94
Power Drift (%)	-0.39
Duty factor:	1:1
ConvF:	5.56



Maximum location: X=-2.00, Y=25.00

SAR 10g (W/Kg)	0.230288
SAR 1g (W/Kg)	0.520417



System Performance Check (Head, 2600MHz)

Type: Phone measurement

Area scan resolution: dx=8mm,dy=8mm

Zoom scan resolution: dx=5mm, dy=5mm, dz=4mm

Date of measurement: 12/20/2018

Measurement duration: 22 minutes 42 seconds

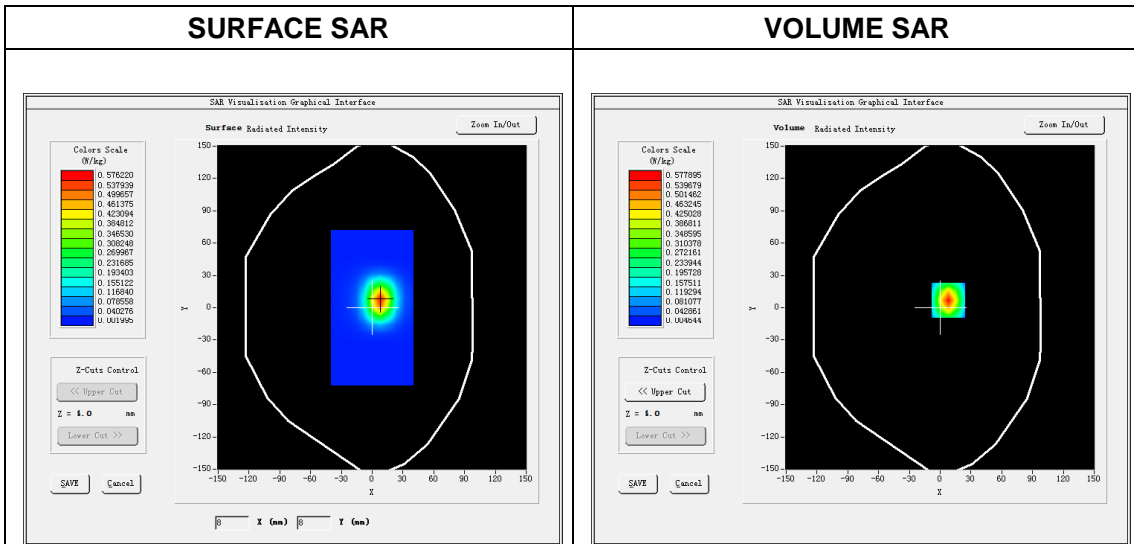
A. Experimental conditions.

Phantom File	dx=8mm dy=8mm
Phantom	7x7x8,dx=5mm dy=5mm dz=4mm
Device Position	Dipole
Band	2600MHz
Channels	
Signal	CW

B. SAR Measurement Results

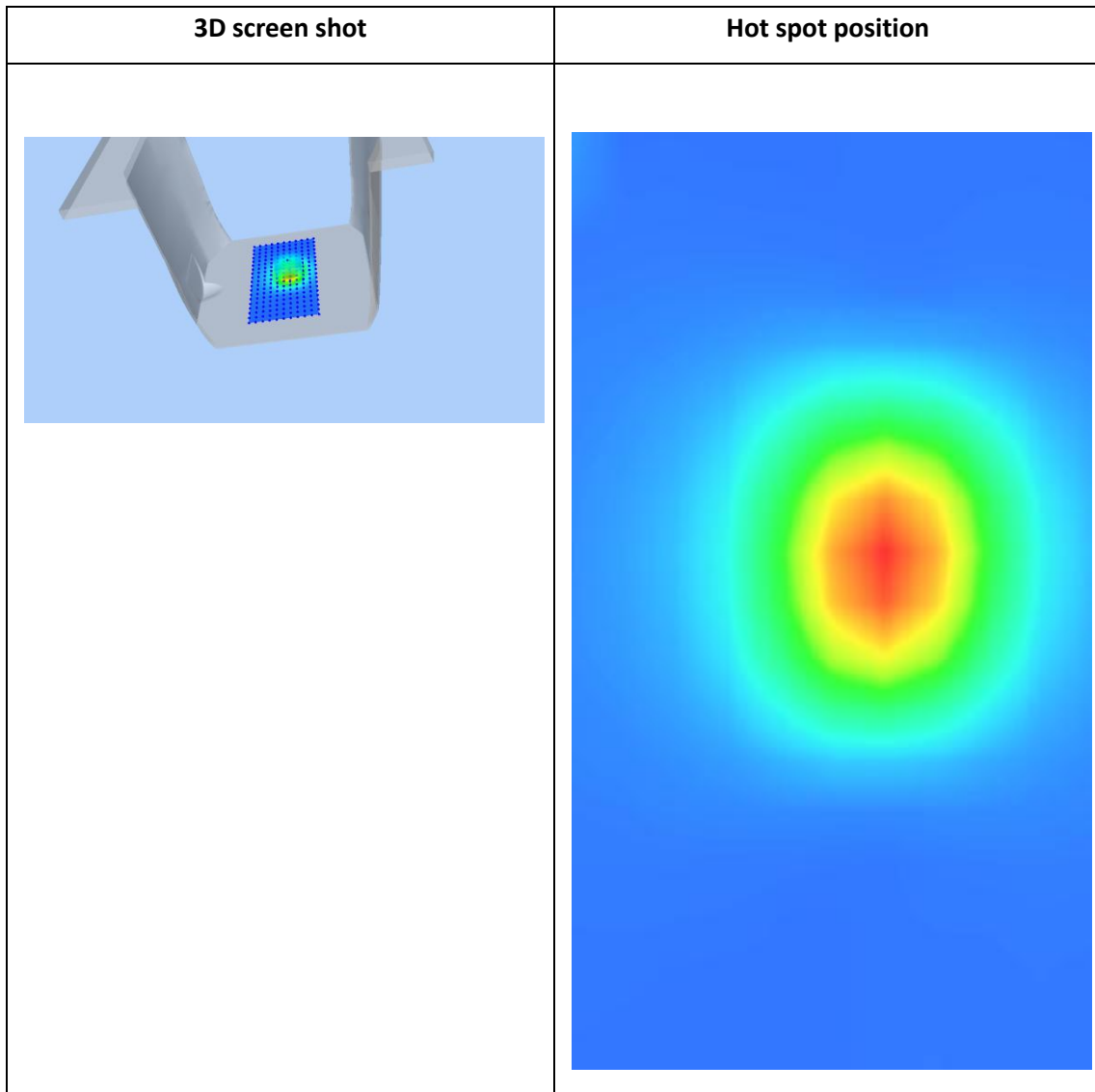
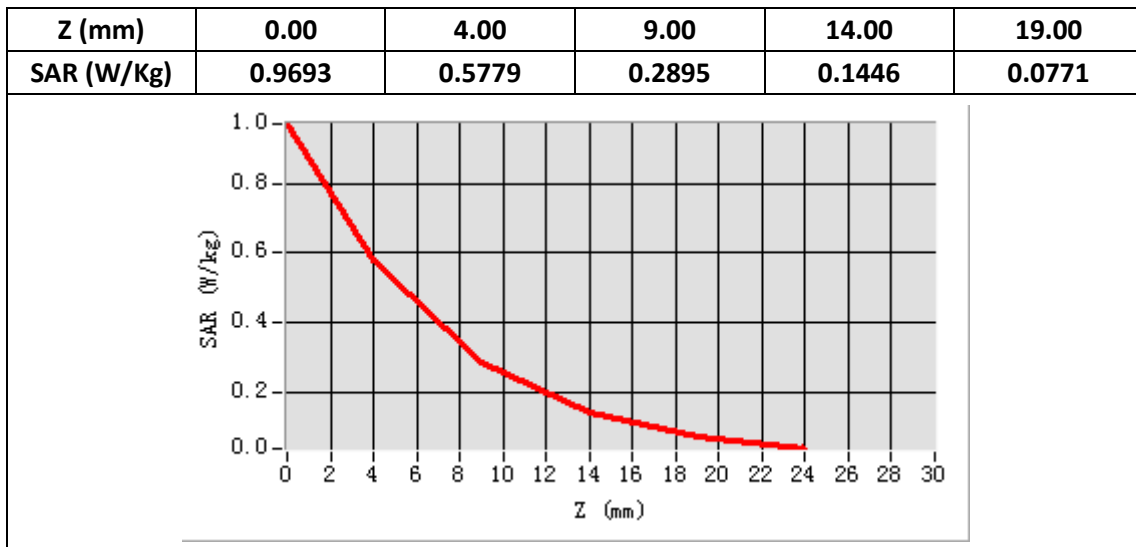
Band SAR

E-Field Probe	SATIMO SN_04/13_EP166
Frequency (MHz)	2600
Relative permittivity (real part)	39.3
Relative permittivity	13.70
Conductivity (S/m)	1.98
Power drift (%)	-0.09
Ambient Temperature:	22.2°C
Liquid Temperature:	22.5°C
Crest factor:	1:1
ConvF:	5.25



Maximum location: X=8.00, Y=7.00

SAR 10g (W/Kg)	0.249667
SAR 1g (W/Kg)	0.555506



System Performance Check (Body, 2600MHz)

Type: Phone measurement

Area scan resolution: dx=8mm,dy=8mm

Zoom scan resolution: dx=5mm, dy=5mm, dz=4mm

Date of measurement: 12/20/2018

Measurement duration: 22 minutes 46 seconds

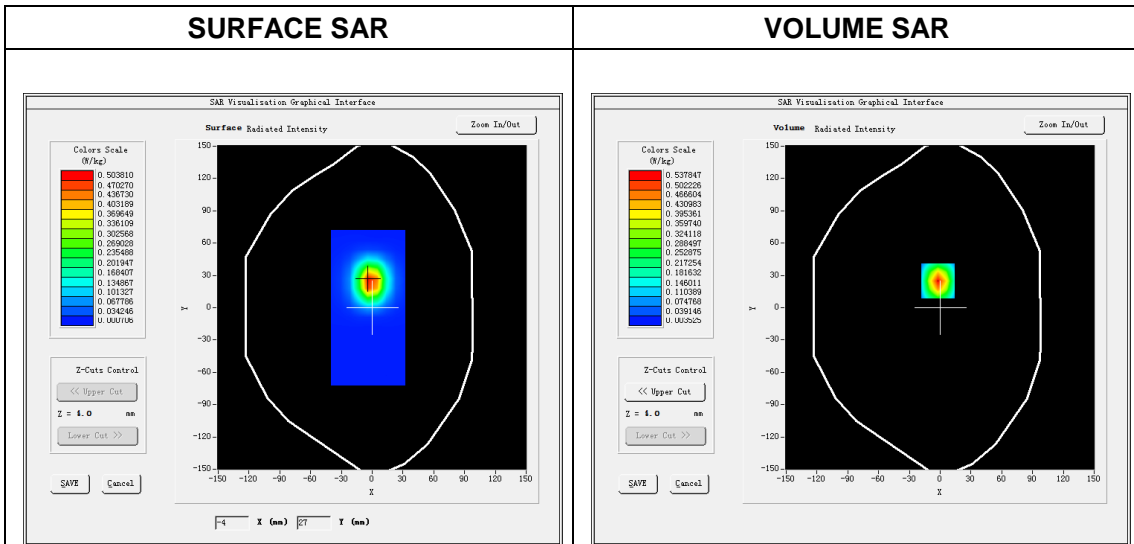
A. Experimental conditions.

Phantom File	dx=8mm dy=8mm
Phantom	7x7x8,dx=5mm dy=5mm dz=4mm
Device Position	Dipole
Band	2600MHz
Channels	
Signal	CW

B. SAR Measurement Results

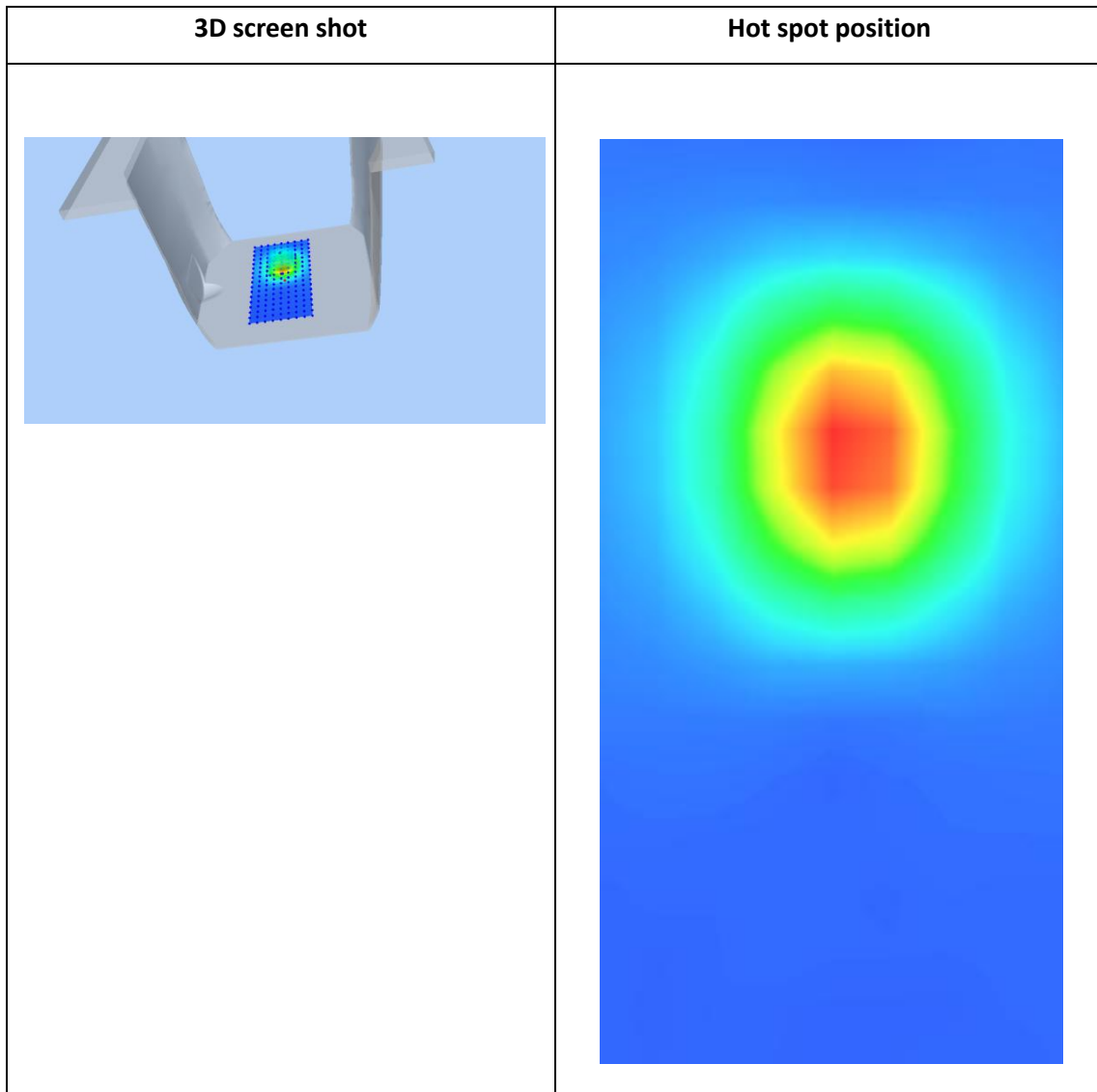
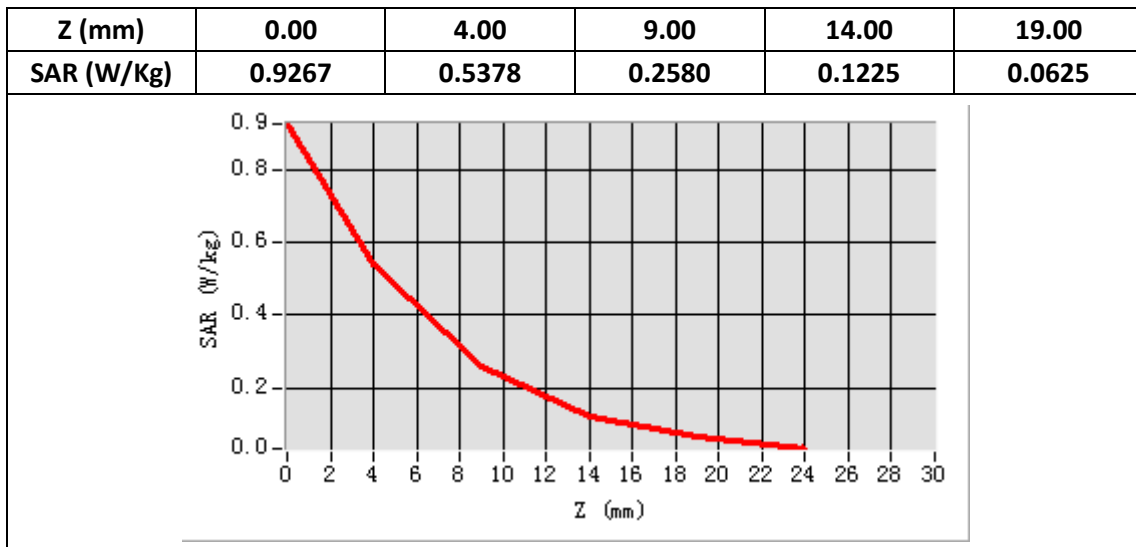
Band SAR

E-Field Probe	SATIMO SN_04/13_EP166
Frequency (MHz)	2600
Relative permittivity (real part)	52.45
Relative permittivity	14.88
Conductivity (S/m)	2.15
Power drift (%)	-0.28
Ambient Temperature:	22.2°C
Liquid Temperature:	22.5°C
Crest factor:	1:1
ConvF:	5.28



Maximum location: X=-2.00, Y=25.00

SAR 10g (W/Kg)	0.238439
SAR 1g (W/Kg)	0.520272



System Performance Check (Head, 5200MHz)

Type: Phone measurement

Area scan resolution: dx=8mm,dy=8mm

Zoom scan resolution: dx=5mm, dy=5mm, dz=4mm

Date of measurement: 12/24/2018

Measurement duration: 22 minutes 21 seconds

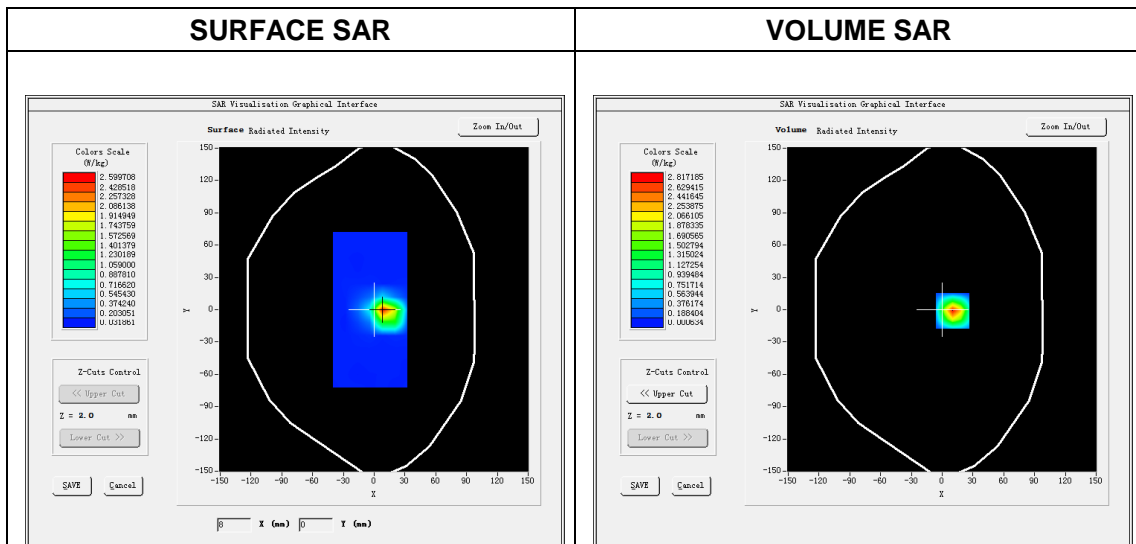
A. Experimental conditions.

Phantom File	dx=8mm dy=8mm
Phantom	7x7x8,dx=5mm dy=5mm dz=4mm
Device Position	Dipole
Band	5200MHz
Channels	
Signal	CW

B. SAR Measurement Results

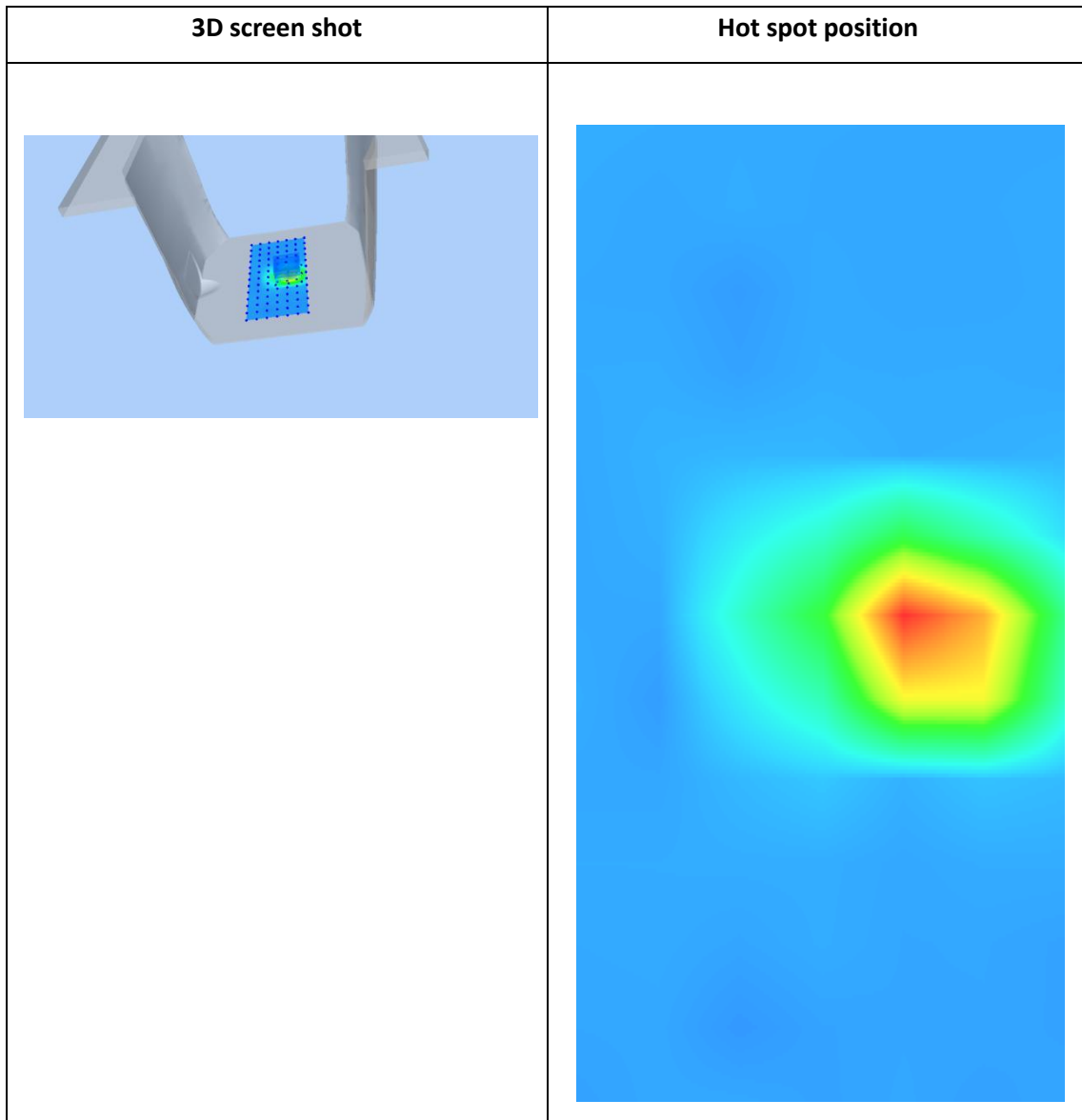
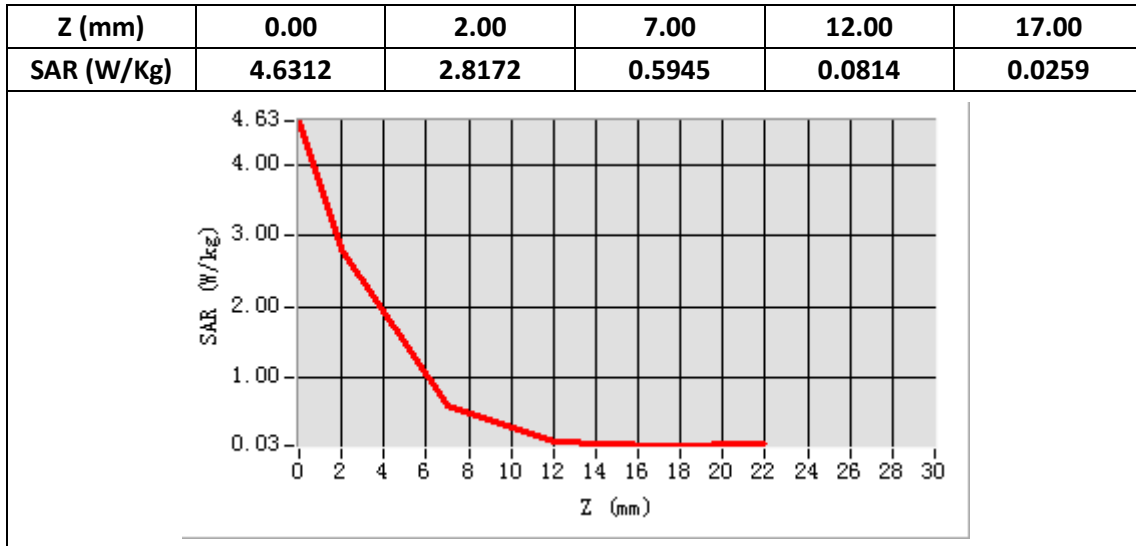
Band SAR

E-Field Probe	SATIMO SN_27/15_EP261
Frequency (MHz)	5200
Relative permittivity (real part)	36.22
Relative permittivity	15.64
Conductivity (S/m)	4.52
Power drift (%)	-1.62
Ambient Temperature:	22.2°C
Liquid Temperature:	22.5°C
Crest factor:	1:1
ConvF:	2.30



Maximum location: X=10.00, Y=-1.00

SAR 10g (W/Kg)	0.570634
SAR 1g (W/Kg)	1.593592



System Performance Check (Body, 5200MHz)

Type: Phone measurement

Area scan resolution: dx=8mm,dy=8mm

Zoom scan resolution: dx=5mm, dy=5mm, dz=4mm

Date of measurement: 12/24/2018

Measurement duration: 22 minutes 26 seconds

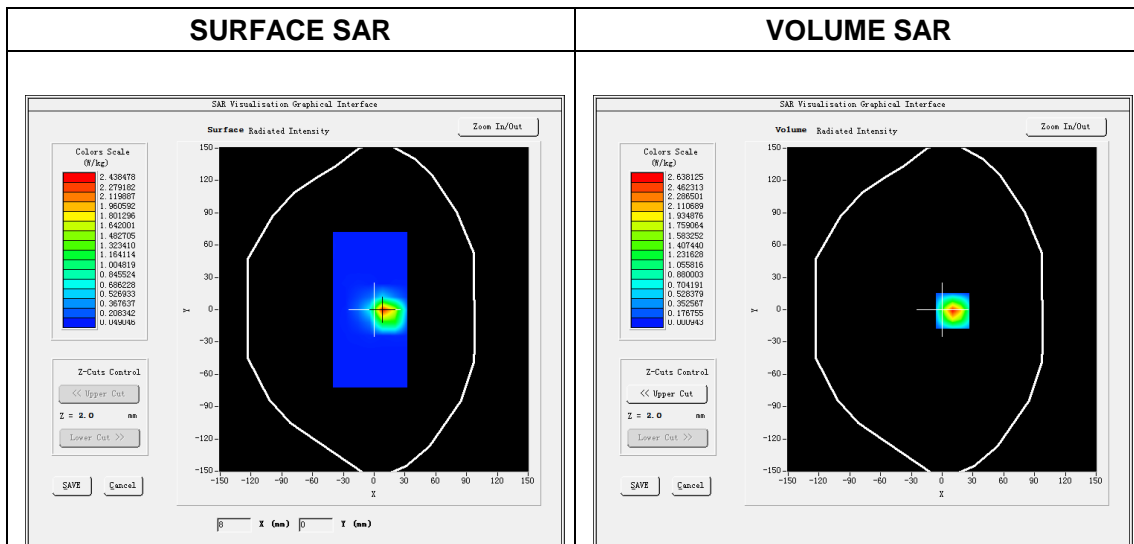
A. Experimental conditions.

Phantom File	dx=8mm dy=8mm
Phantom	7x7x8,dx=5mm dy=5mm dz=4mm
Device Position	Dipole
Band	5200MHz
Channels	
Signal	CW

B. SAR Measurement Results

Band SAR

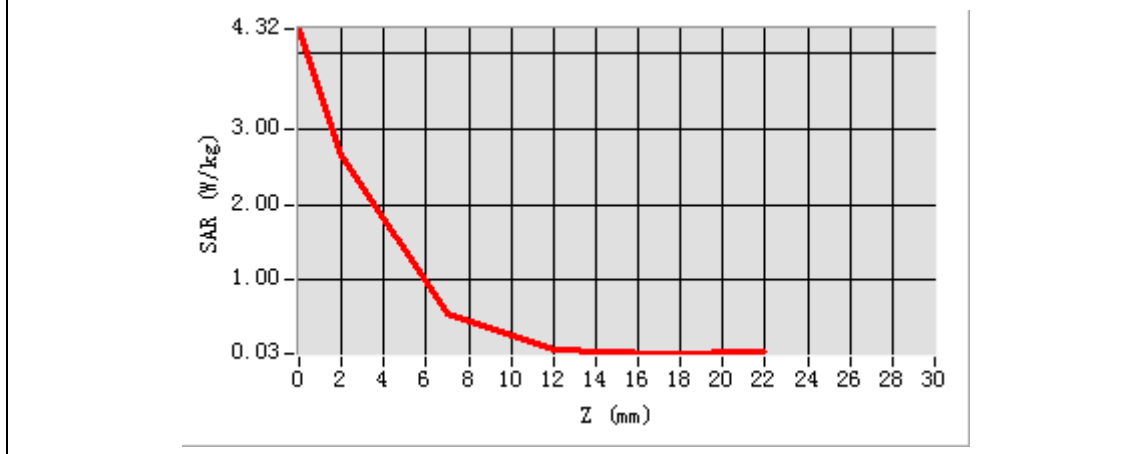
E-Field Probe	SATIMO SN_27/15_EP261
Frequency (MHz)	5200
Relative permittivity (real part)	49.33
Relative permittivity	17.72
Conductivity (S/m)	5.12
Power drift (%)	-1.47
Ambient Temperature:	22.2°C
Liquid Temperature:	22.5°C
Crest factor:	1:1
ConvF:	2.37

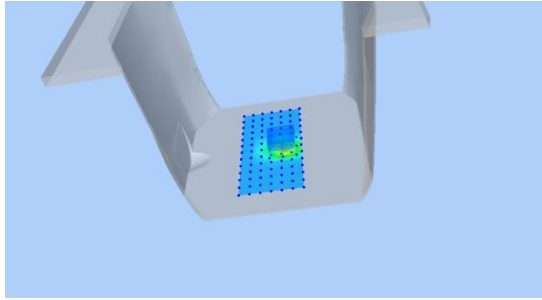
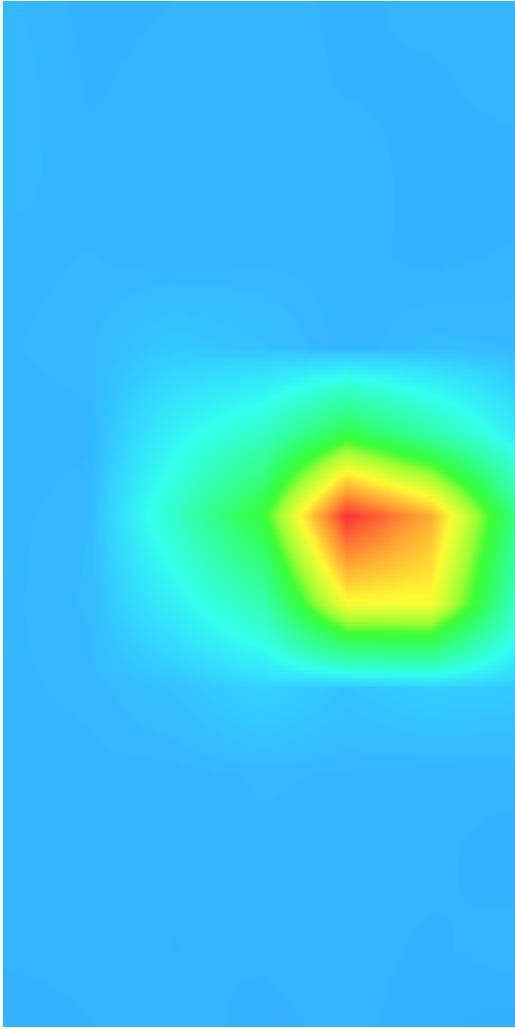


Maximum location: X=10.00, Y=-1.00

SAR 10g (W/Kg)	0.550786
SAR 1g (W/Kg)	1.521606

Z (mm)	0.00	2.00	7.00	12.00	17.00
SAR (W/Kg)	4.3178	2.6381	0.5710	0.0860	0.0320



3D screen shot	Hot spot position
	

System Performance Check (Head, 5800MHz)

Type: Phone measurement

Area scan resolution: dx=8mm,dy=8mm

Zoom scan resolution: dx=5mm, dy=5mm, dz=4mm

Date of measurement: 12/25/2018

Measurement duration: 22 minutes 55 seconds

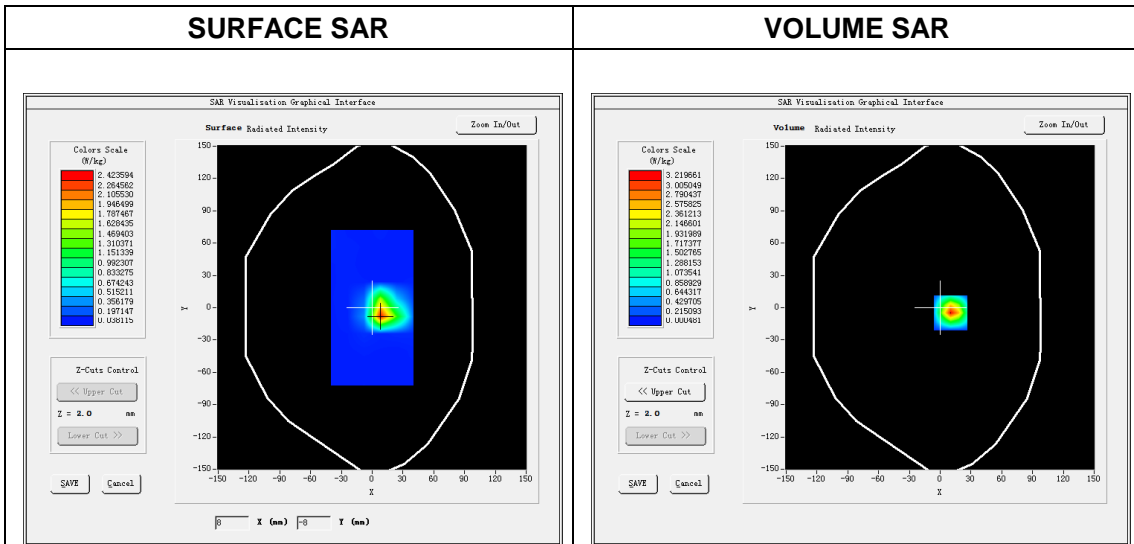
A. Experimental conditions.

Phantom File	dx=8mm dy=8mm
Phantom	7x7x8,dx=5mm dy=5mm dz=4mm
Device Position	Dipole
Band	5800MHz
Channels	
Signal	CW

B. SAR Measurement Results

Band SAR

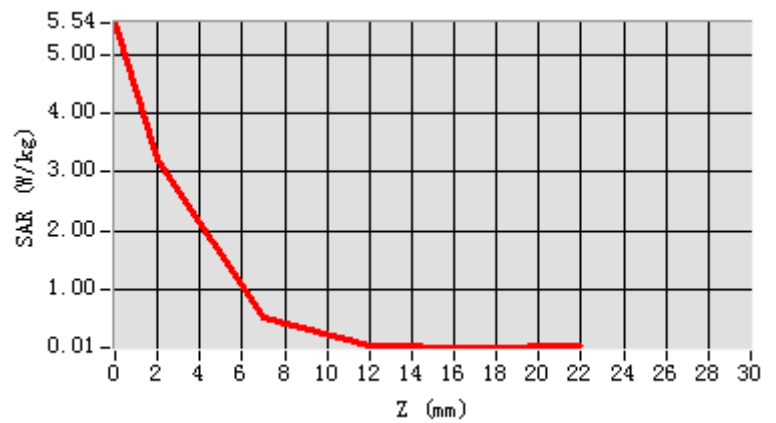
E-Field Probe	SATIMO SN_27/15_EP261
Frequency (MHz)	5800
Relative permittivity (real part)	35.20
Relative permittivity	16.29
Conductivity (S/m)	5.25
Power drift (%)	-1.82
Ambient Temperature:	22.2°C
Liquid Temperature:	22.5°C
Crest factor:	1:1
ConvF:	2.26

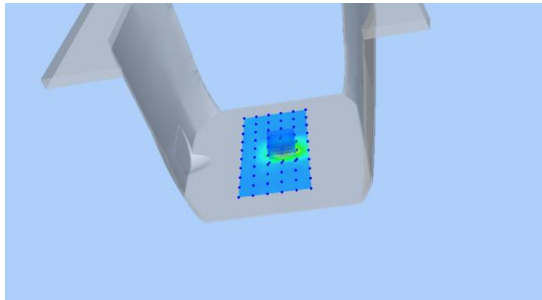
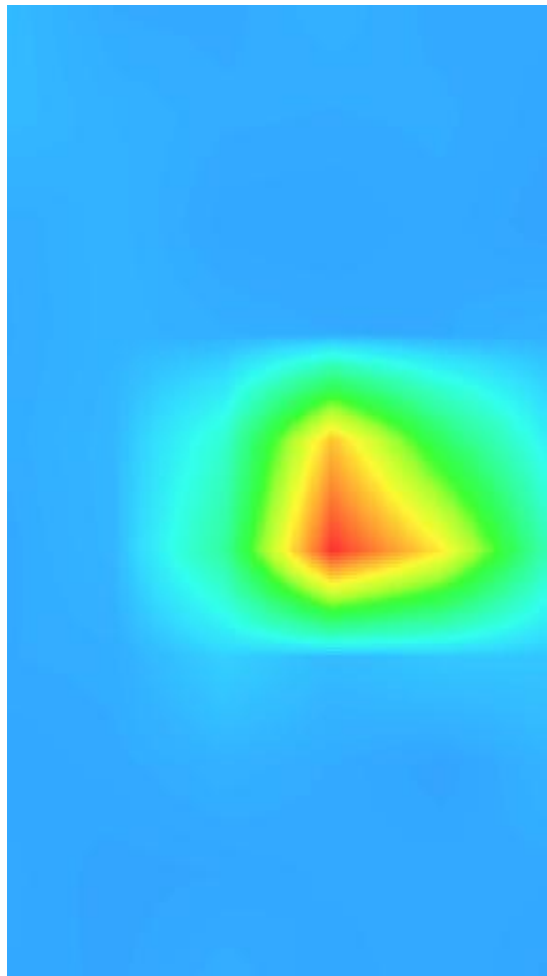


Maximum location: X=10.00, Y=-5.00

SAR 10g (W/Kg)	0.636853
SAR 1g (W/Kg)	1.809761

Z (mm)	0.00	2.00	7.00	12.00	17.00
SAR (W/Kg)	5.5379	3.2197	0.5355	0.0362	0.0091



3D screen shot	Hot spot position
	

System Performance Check (Body, 5800MHz)

Type: Phone measurement

Area scan resolution: dx=8mm,dy=8mm

Zoom scan resolution: dx=5mm, dy=5mm, dz=4mm

Date of measurement: 12/25/2018

Measurement duration: 22 minutes 46 seconds

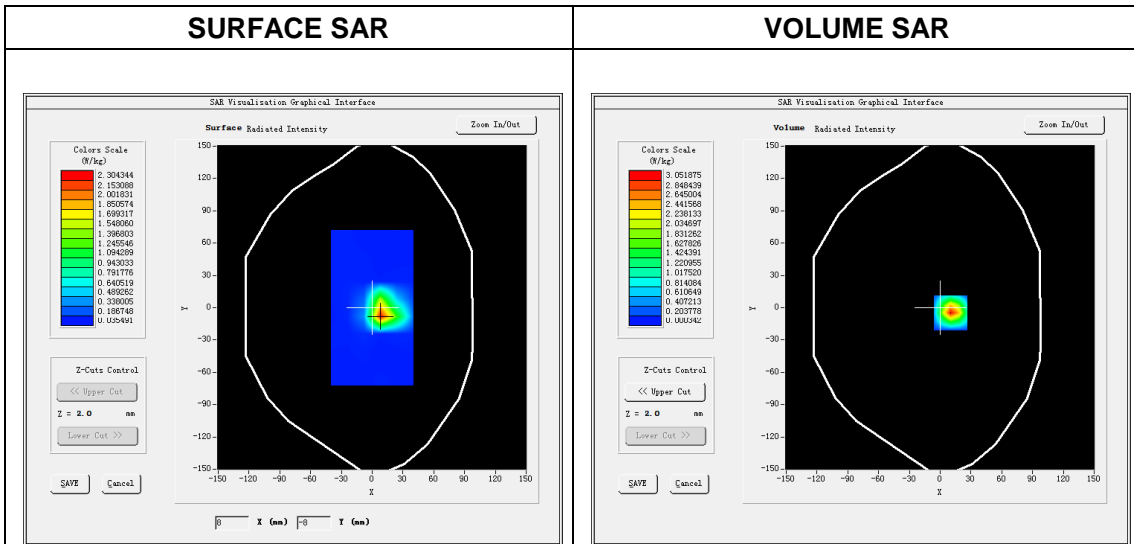
A. Experimental conditions.

Phantom File	dx=8mm dy=8mm
Phantom	7x7x8,dx=5mm dy=5mm dz=4mm
Device Position	Dipole
Band	5800MHz
Channels	
Signal	CW

B. SAR Measurement Results

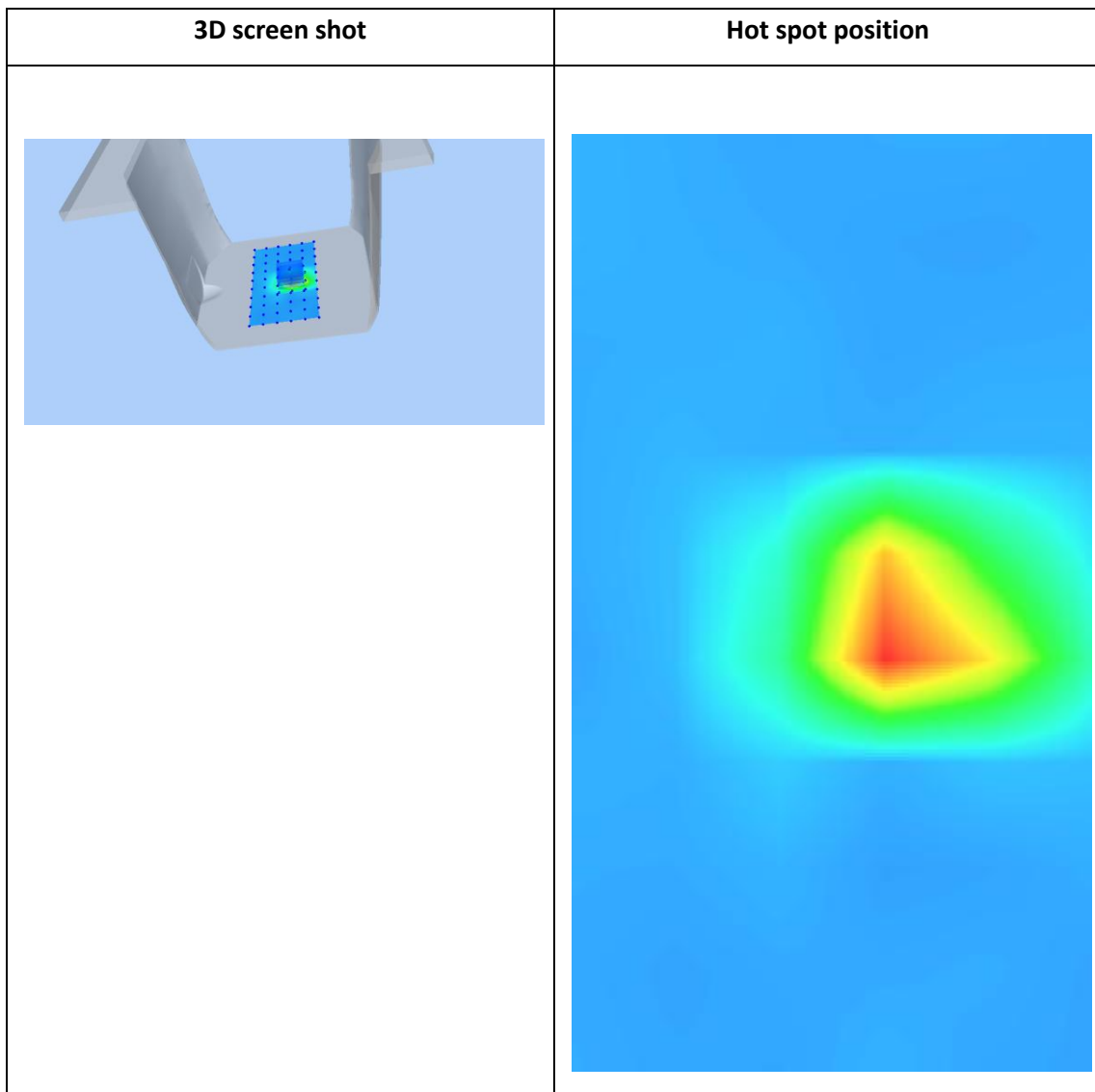
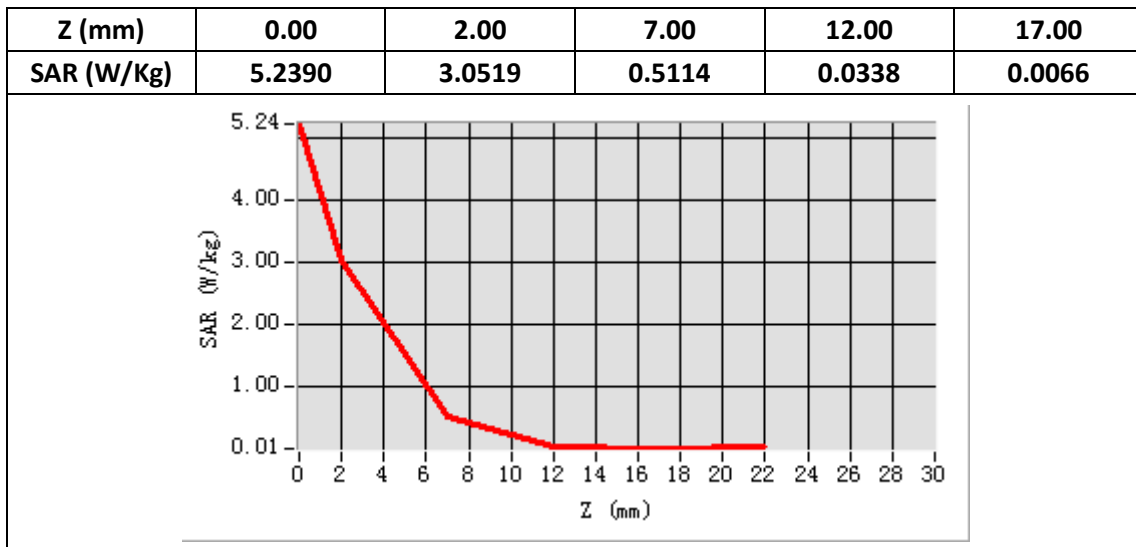
Band SAR

E-Field Probe	SATIMO SN_27/15_EP261
Frequency (MHz)	5800
Relative permittivity (real part)	48.15
Relative permittivity	18.27
Conductivity (S/m)	5.89
Power drift (%)	-2.10
Ambient Temperature:	22.2°C
Liquid Temperature:	22.5°C
Crest factor:	1:1
ConvF:	2.38



Maximum location: X=10.00, Y=-5.00

SAR 10g (W/Kg)	0.600529
SAR 1g (W/Kg)	1.710436



System Performance Check (Head, 2450MHz)

Type: Phone measurement

Area scan resolution: dx=8mm,dy=8mm

Zoom scan resolution: dx=5mm, dy=5mm, dz=4mm

Date of measurement: 1/9/2019

Measurement duration: 22 minutes 15 seconds

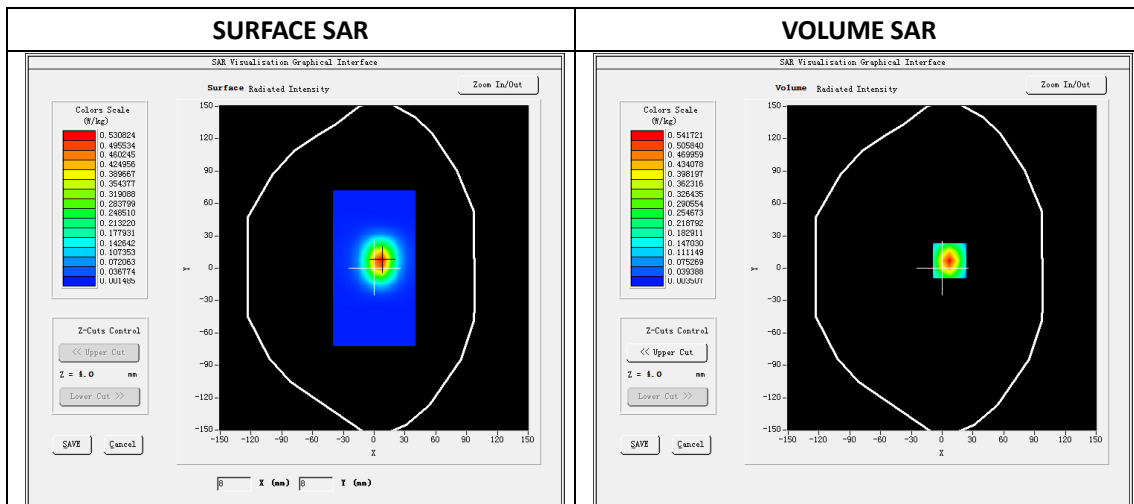
A. Experimental conditions.

Phantom File	dx=8mm dy=8mm
Phantom	7x7x8,dx=5mm dy=5mm dz=4mm
Device Position	Dipole
Band	2450MHz
Channels	
Signal	CW

B. SAR Measurement Results

Band SAR

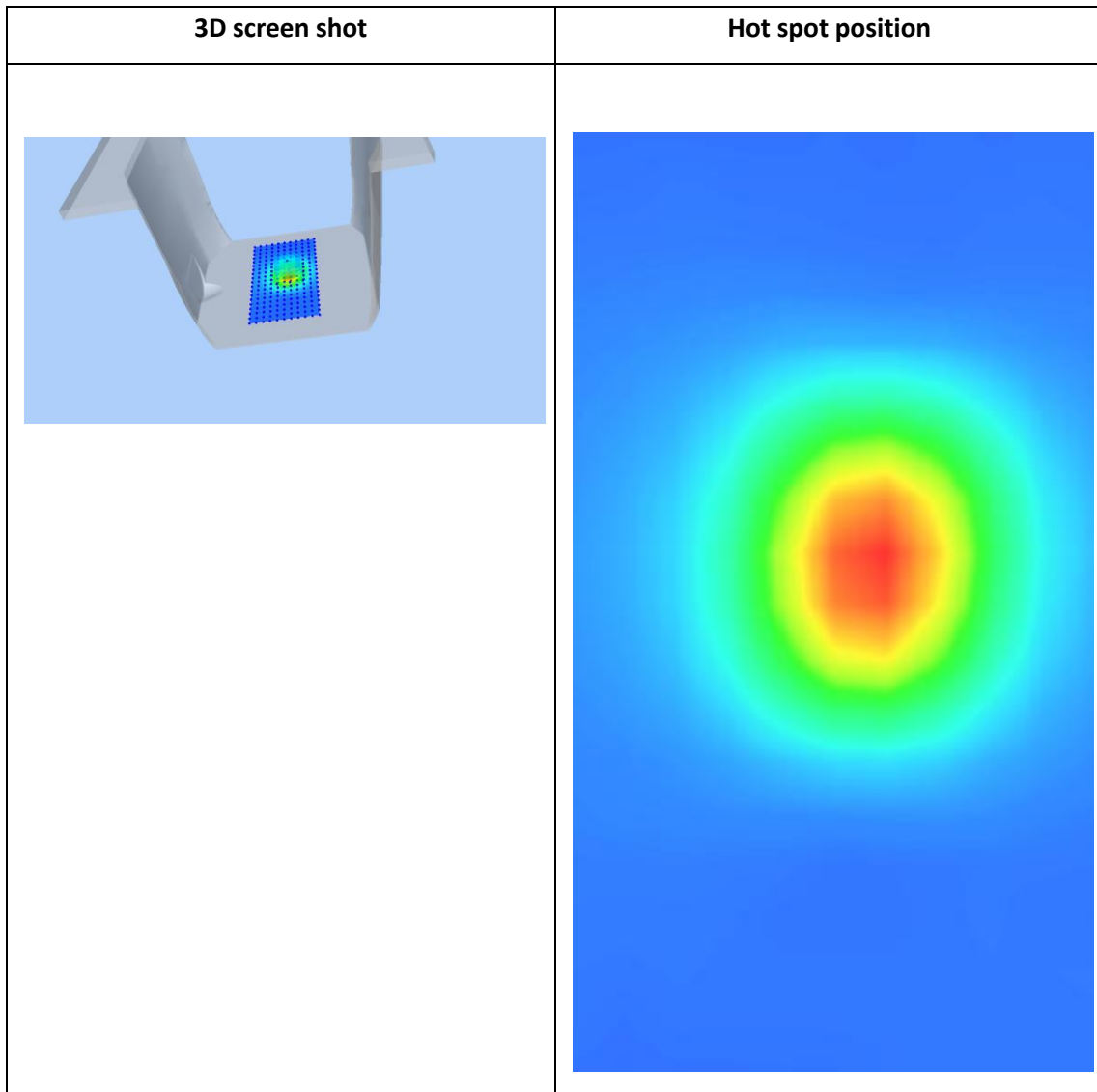
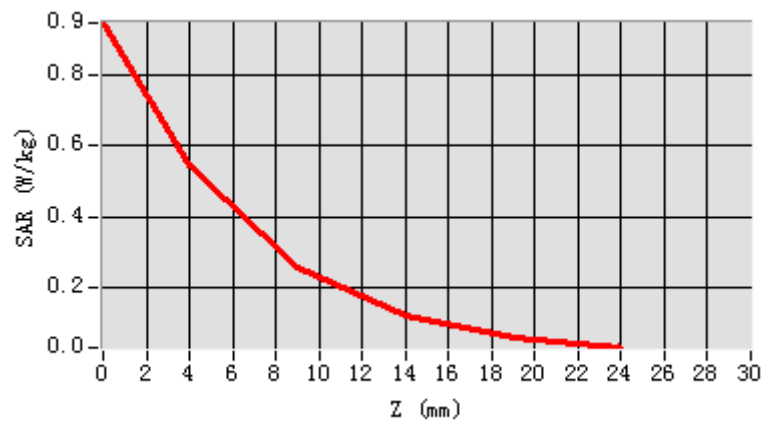
E-Field Probe	SATIMO SN_04/13_EP166
Frequency (MHz)	2450
Relative permittivity (real part)	38.85
Relative permittivity	13.29
Conductivity (S/m)	1.81
Power Drift (%)	-0.12
Duty factor:	1:1
ConvF:	5.35



Maximum location: X=7.00, Y=7.00

SAR 10g (W/Kg)	0.232850
SAR 1g (W/Kg)	0.527804

Z (mm)	0.00	4.00	9.00	14.00	19.00
SAR (W/Kg)	0.9446	0.5417	0.2550	0.1186	0.0597



System Performance Check (Body, 2450MHz)

Type: Phone measurement

Area scan resolution: dx=8mm,dy=8mm

Zoom scan resolution: dx=5mm, dy=5mm, dz=4mm

Date of measurement: 1/9/2019

Measurement duration: 22 minutes 38 seconds

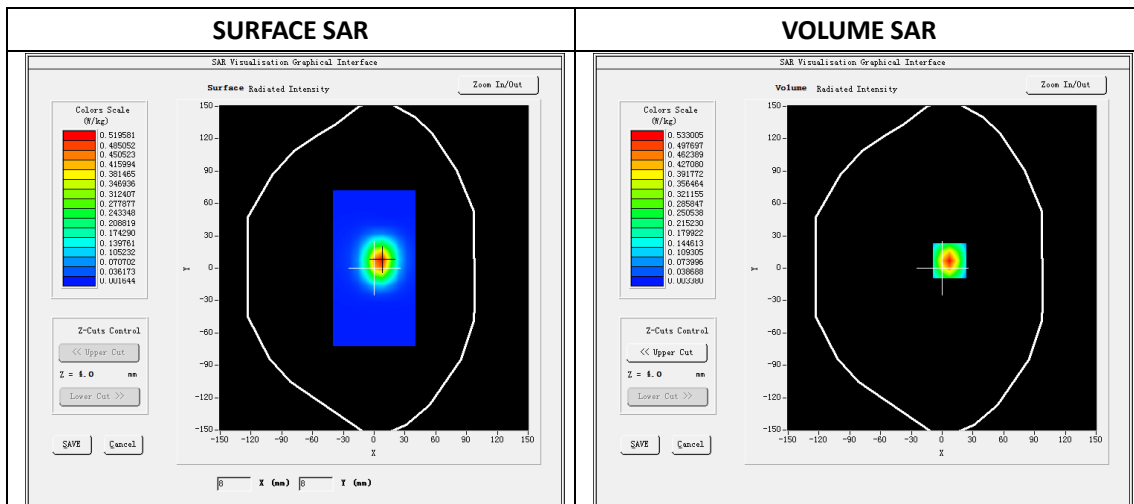
A. Experimental conditions.

Phantom File	dx=8mm dy=8mm
Phantom	7x7x8,dx=5mm dy=5mm dz=4mm
Device Position	Dipole
Band	2450MHz
Channels	
Signal	CW

B. SAR Measurement Results

Band SAR

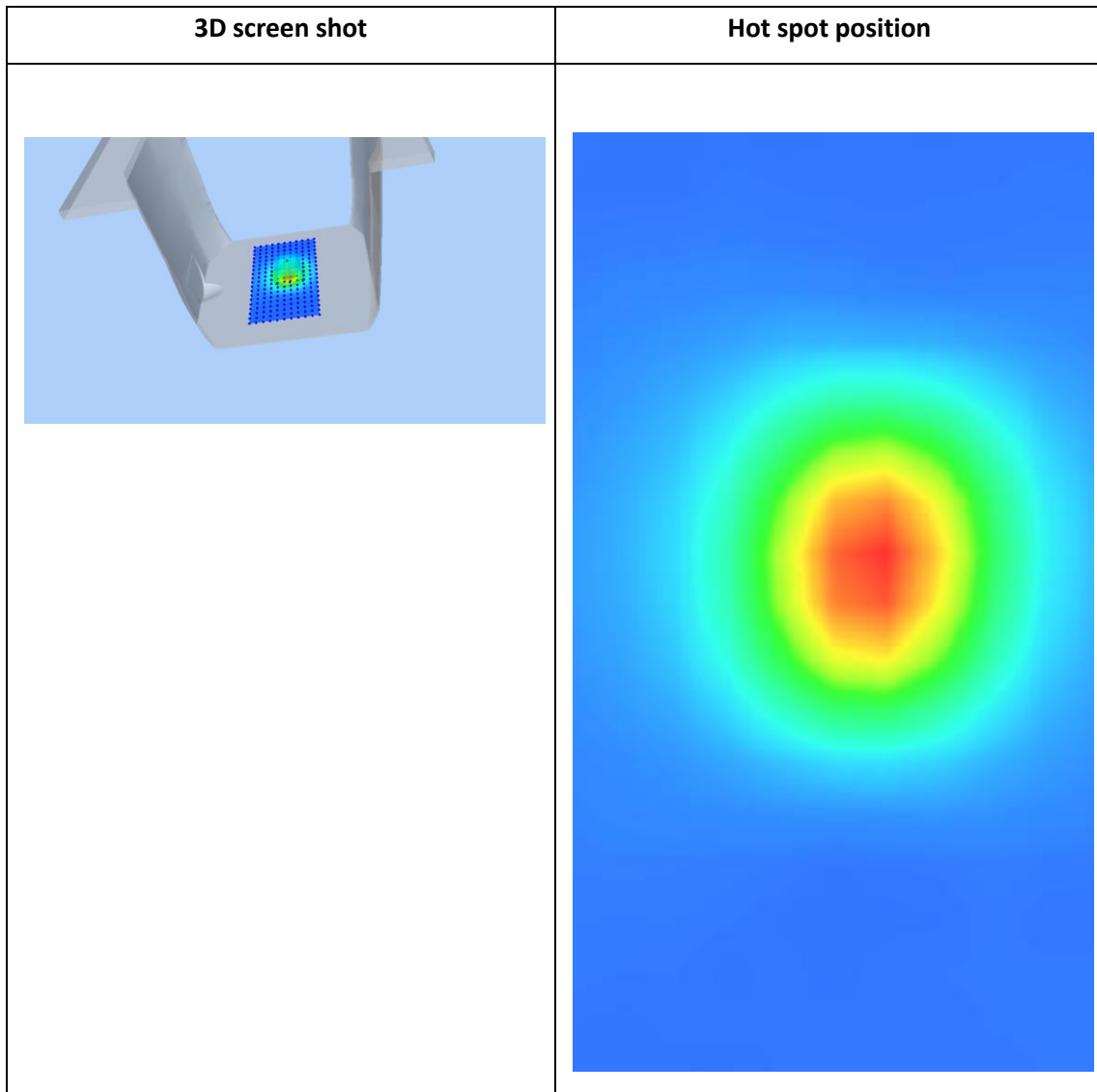
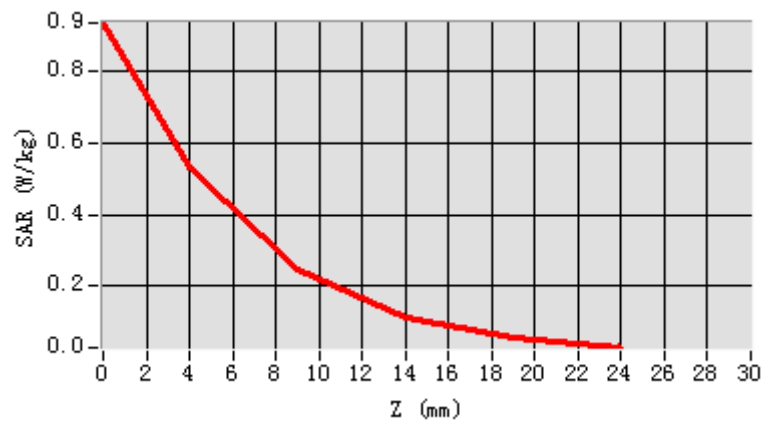
E-Field Probe	SATIMO SN_04/13_EP166
Frequency (MHz)	2450
Relative permittivity (real part)	52.53
Relative permittivity	14.17
Conductivity (S/m)	1.93
Power Drift (%)	0.22
Duty factor:	1:1
ConvF:	5.56



Maximum location: X=700, Y=700

SAR 10g (W/Kg)	0.228438
SAR 1g (W/Kg)	0.519744

Z (mm)	0.00	4.00	9.00	14.00	19.00
SAR (W/Kg)	0.9358	0.5330	0.2481	0.1141	0.0570



System Performance Check (Head, 2600MHz)

Type: Phone measurement

Area scan resolution: dx=8mm,dy=8mm

Zoom scan resolution: dx=5mm, dy=5mm, dz=4mm

Date of measurement: 1/10/2019

Measurement duration: 22 minutes 42 seconds

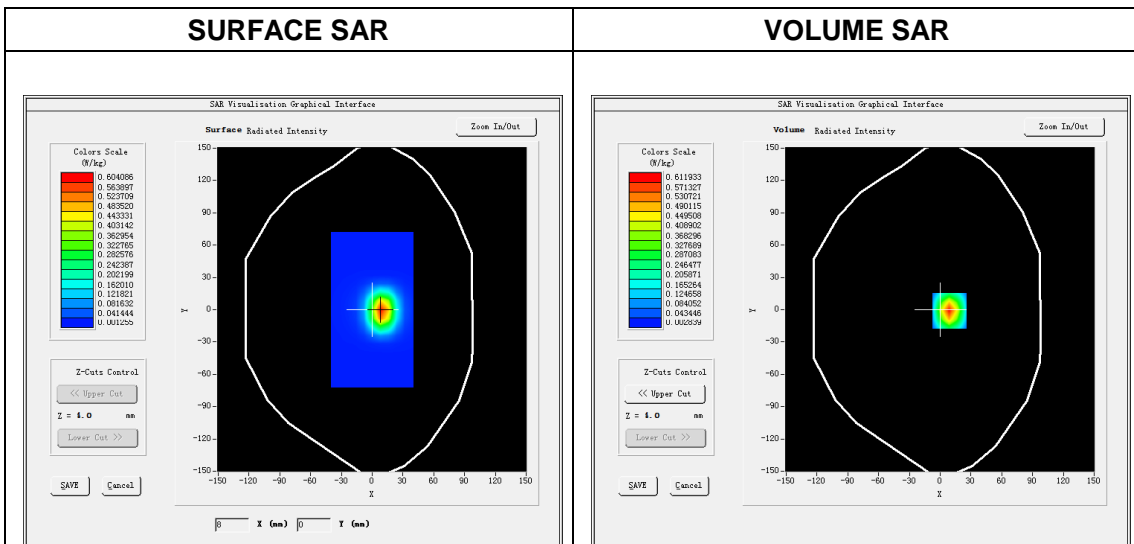
A. Experimental conditions.

Phantom File	dx=8mm dy=8mm
Phantom	7x7x8,dx=5mm dy=5mm dz=4mm
Device Position	Dipole
Band	2600MHz
Channels	
Signal	CW

B. SAR Measurement Results

Band SAR

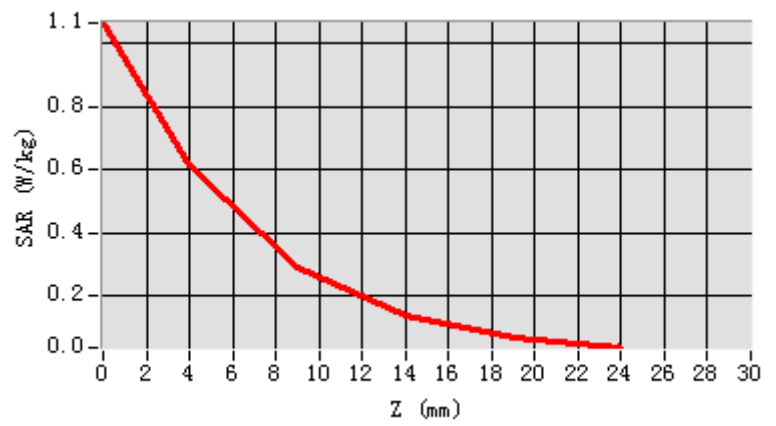
E-Field Probe	SATIMO SN_04/13_EP166
Frequency (MHz)	2600
Relative permittivity (real part)	39.28
Relative permittivity	13.77
Conductivity (S/m)	1.99
Power drift (%)	-0.40
Ambient Temperature:	22.2°C
Liquid Temperature:	22.5°C
Crest factor:	1:1
ConvF:	5.25

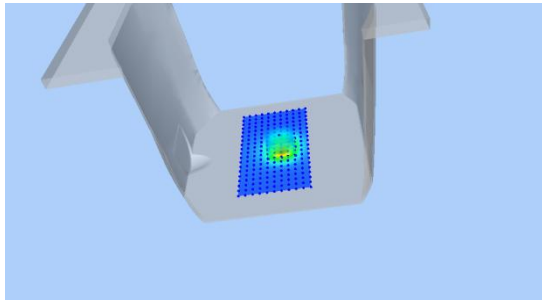
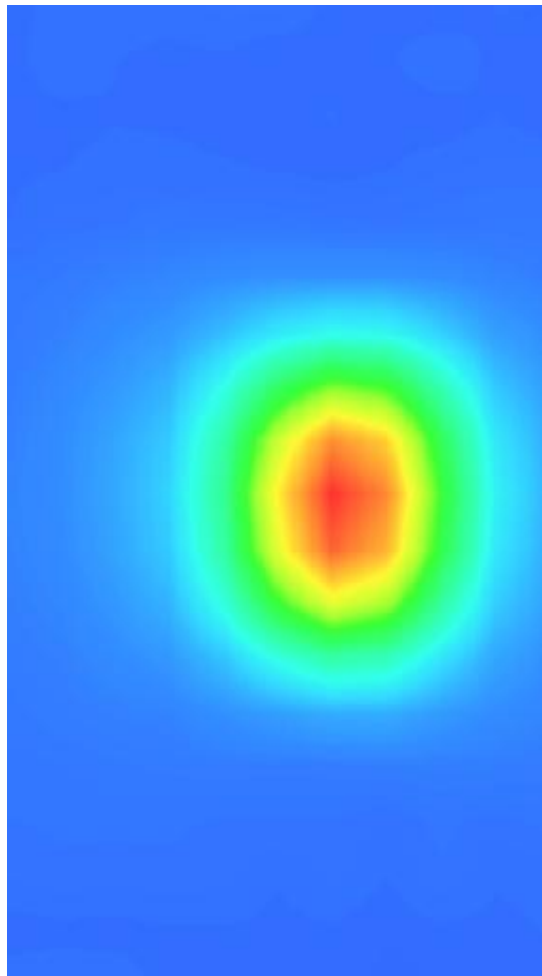


Maximum location: X=9.00, Y=-1.00

SAR 10g (W/Kg)	0.242368
SAR 1g (W/Kg)	0.552633

Z (mm)	0.00	4.00	9.00	14.00	19.00
SAR (W/Kg)	1.0647	0.6119	0.2889	0.1348	0.0678



3D screen shot	Hot spot position
	

System Performance Check (Body, 2600MHz)

Type: Phone measurement

Area scan resolution: dx=8mm,dy=8mm

Zoom scan resolution: dx=5mm, dy=5mm, dz=4mm

Date of measurement: 1/10/2019

Measurement duration: 22 minutes 46 seconds

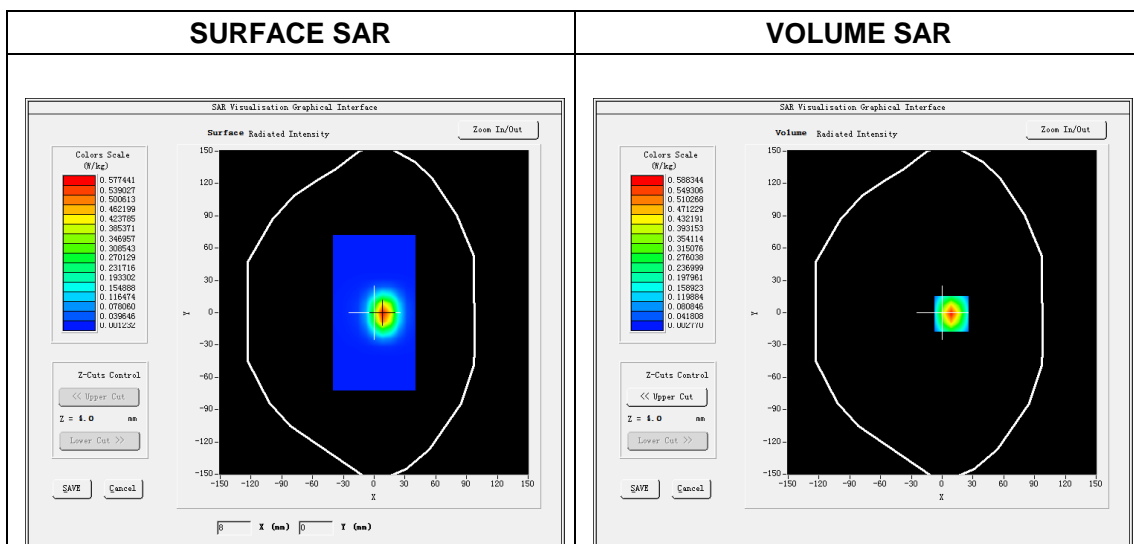
A. Experimental conditions.

Phantom File	dx=8mm dy=8mm
Phantom	7x7x8,dx=5mm dy=5mm dz=4mm
Device Position	Dipole
Band	2600MHz
Channels	
Signal	CW

B. SAR Measurement Results

Band SAR

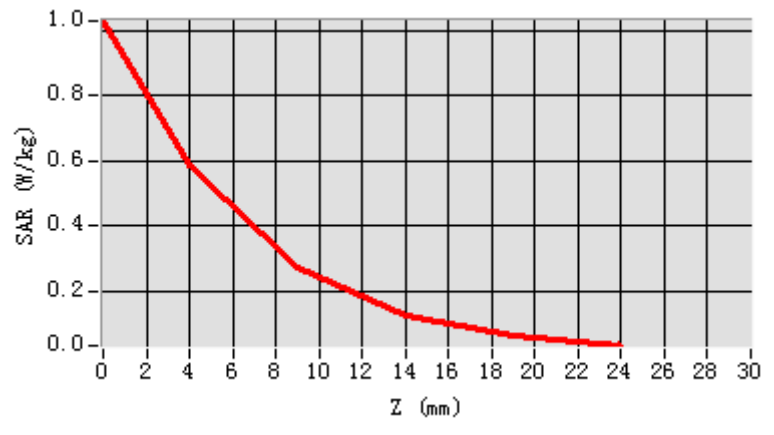
E-Field Probe	SATIMO SN_04/13_EP166
Frequency (MHz)	2600
Relative permittivity (real part)	52.41
Relative permittivity	14.74
Conductivity (S/m)	2.13
Power drift (%)	1.96
Ambient Temperature:	22.2°C
Liquid Temperature:	22.5°C
Crest factor:	1:1
ConvF:	5.28



Maximum location: X=9.00, Y=-1.00

SAR 10g (W/Kg)	0.232544
SAR 1g (W/Kg)	0.531504

Z (mm)	0.00	4.00	9.00	14.00	19.00
SAR (W/Kg)	1.0296	0.5883	0.2752	0.1271	0.0636



3D screen shot	Hot spot position
