

Appendix B: SAR Measurement results Plots

Plot	Frequency/Mode	Testing Position and Channel	Test Date
1	GSM850	Left Cheek Middle	2019/01/22
2	GSM850/GPRS4Tx	Body Back, Middle ,10mm	2019/01/22
3	GSM1900	Right Cheek Middle	2019/01/24
4	GSM1900/GPRS4Tx	Body Back Middle ,10mm	2019/01/24
5	WCDMA850	Right Cheek Middle	2019/01/22
6	WCDMA850	Body Back, Middle ,10mm	2019/01/22
7	WCDMA1900	Right Cheek Middle	2019/01/24
8	WCDMA1900	Body Back, Middle ,10mm	2019/01/24
9	WIFI 2.4G 802 11b	Left Cheek Middle	2019/01/25
10	WIFI 2.4G 802 11b	Body Back, Middle ,10mm	2019/01/25

Plot 1: GSM850, Left Cheek, Middle

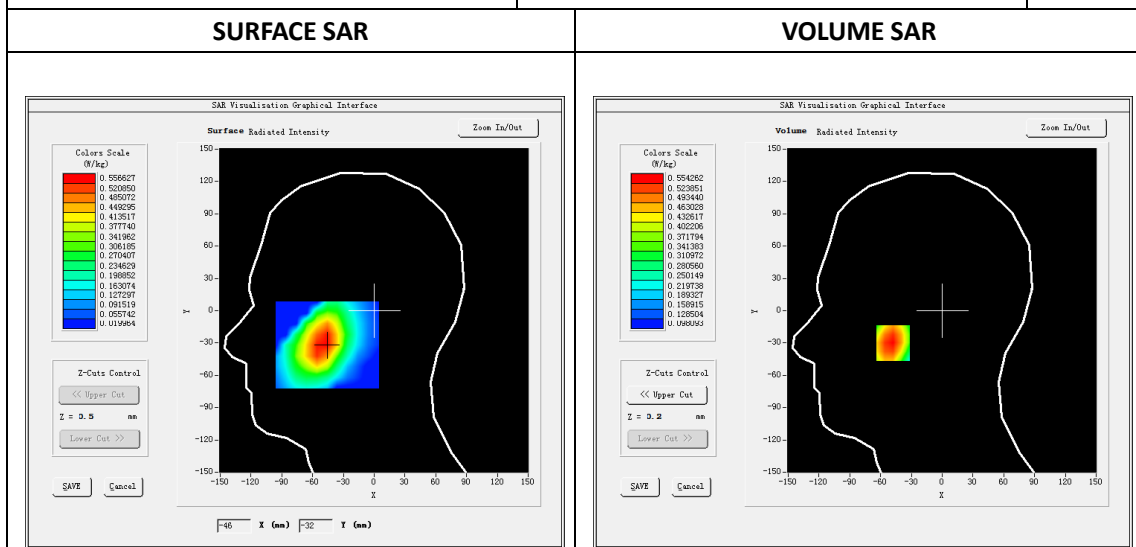
Type: Phone measurement
 Date of measurement: 01/22/2019
 Measurement duration: 22 minutes 25 seconds
 Mobile Phone IMEI number: --

A. Experimental conditions.

Area Scan	dx=8mm dy=8mm
ZoomScan	5x5x7,dx=8mm dy=8mm dz=5mm
Phantom	Validation plane
Device Position	Left Cheek
Band	GSM850
Channels	190
Signal	GSM (Duty cycle: 1:8.3)

B. SAR Measurement Results

E-Field Probe	SATIMO SN_04/13_EP166
Frequency (MHz)	836.6
Relative permittivity (real part)	41.44
Relative permittivity (imaginary part)	18.27
Conductivity (S/m)	0.87
Variation (%)	4.25
ConvF:	5.85

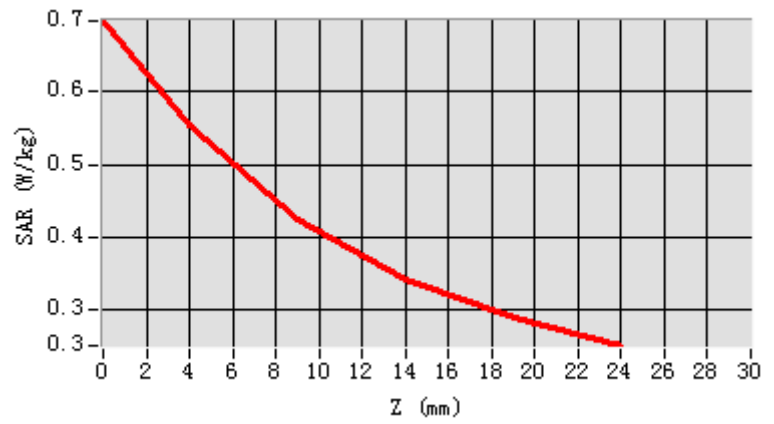


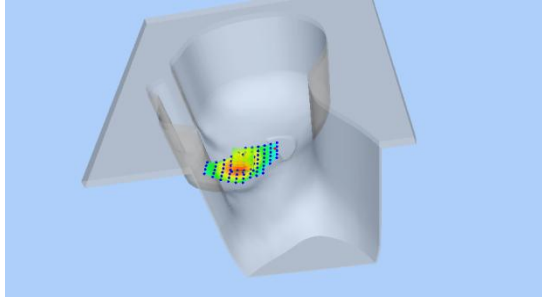
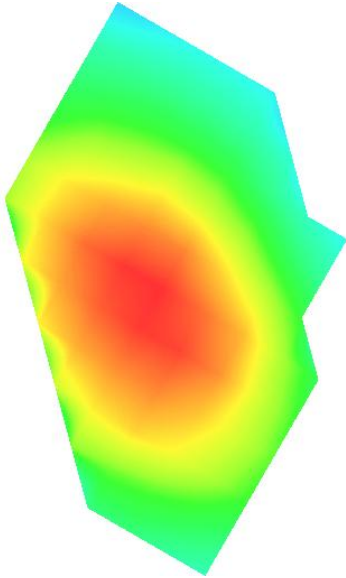
Maximum location: X=-48.00, Y=-30.00

SAR Peak: 0.70W/kg

SAR 10g (W/Kg)	0.401998
SAR 1g (W/Kg)	0.543400

Z (mm)	0.00	4.00	9.00	14.00	19.00
SAR (W/Kg)	0.6975	0.5543	0.4252	0.3413	0.2888



3D screen shot	Hot spot position
	

Plot 2: GPRS850, Back, Middle,10mm

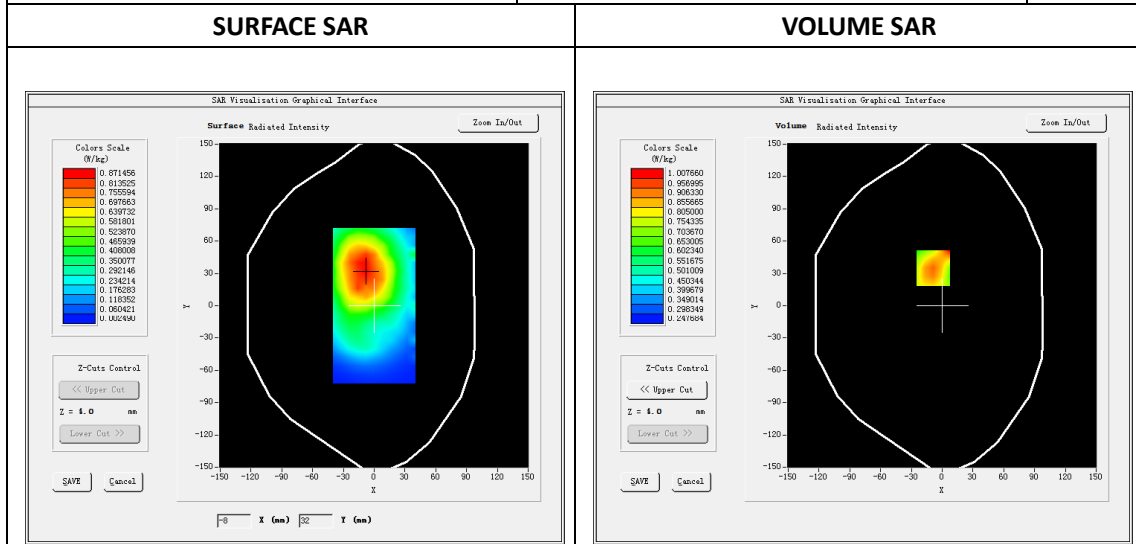
Type: Phone measurement
 Date of measurement: 01/22/2019
 Measurement duration: 22 minutes 15 seconds
 Mobile Phone IMEI number: --

A. Experimental conditions.

Area Scan	dx=8mm dy=8mm
ZoomScan	5x5x7,dx=8mm dy=8mm dz=5mm
Phantom	Validation plane
Device Position	Back
Band	GSPRS850_4Tx
Channels	190
Signal	GPRS(Duty cycle: 1:2)

B. SAR Measurement Results

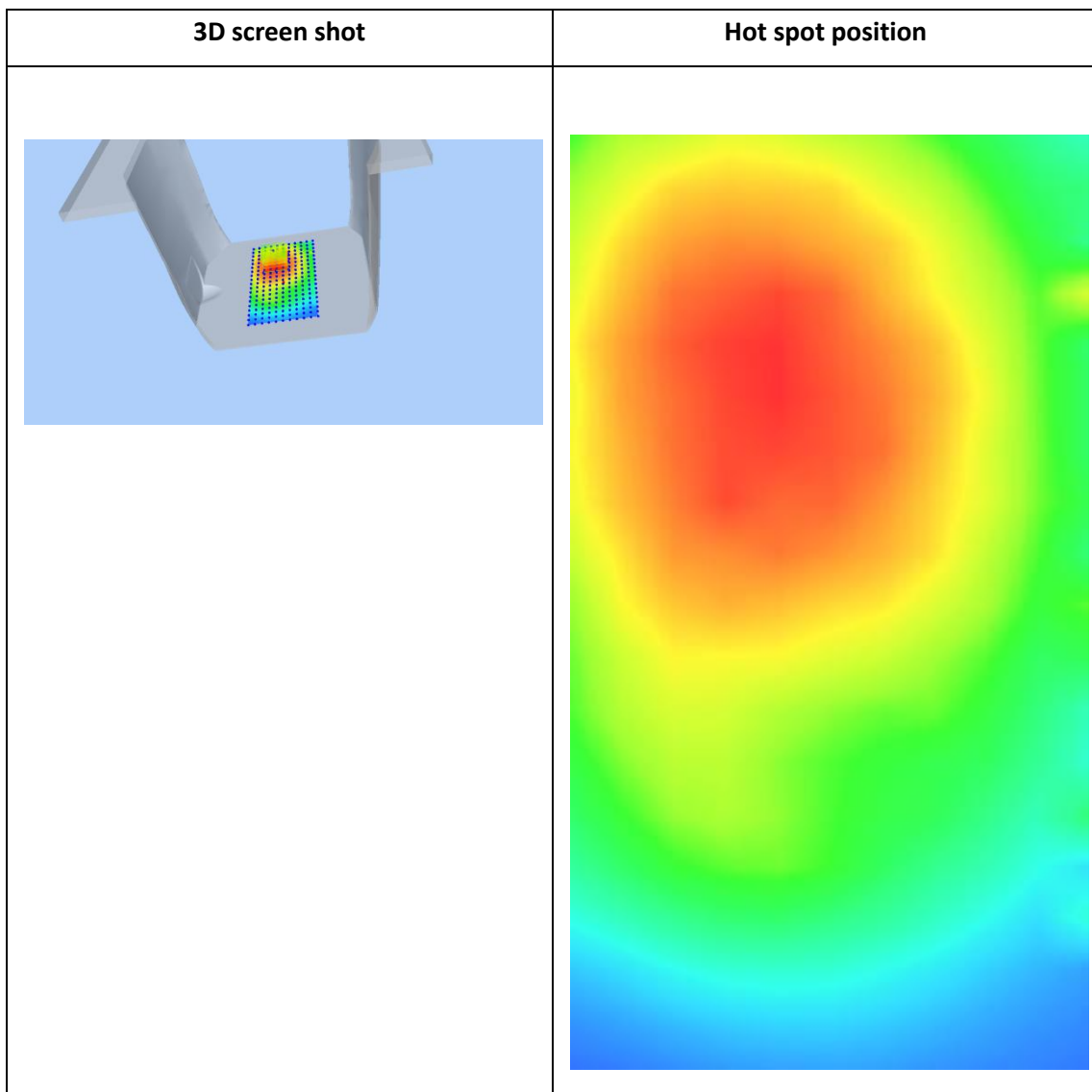
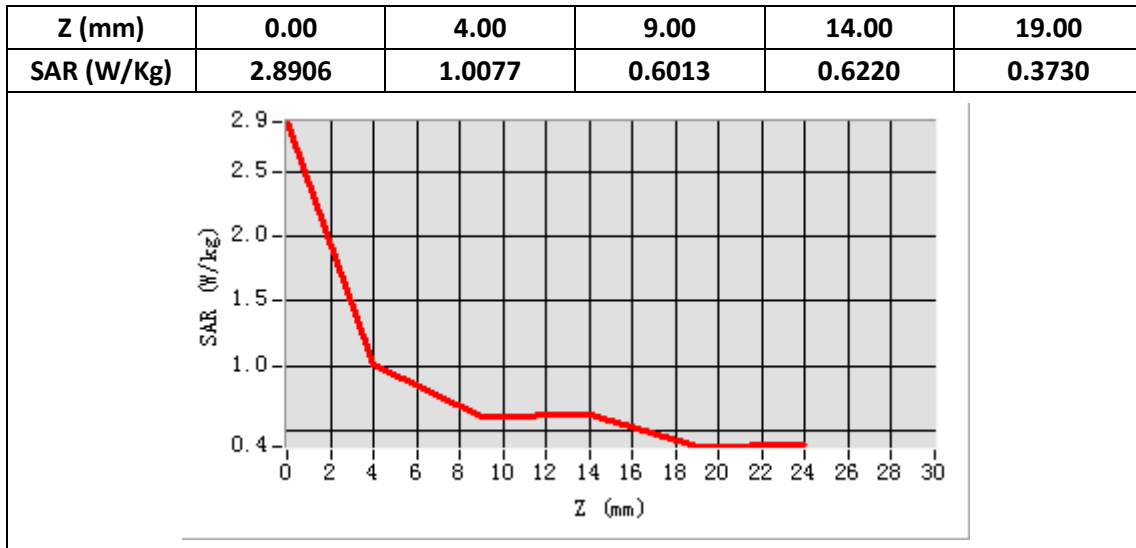
E-Field Probe	SATIMO SN_04/13_EP166
Frequency (MHz)	836.6
Relative permittivity (real part)	55.18
Relative permittivity (imaginary part)	21.12
Conductivity (S/m)	0.98
Variation (%)	0.77
ConvF:	6.17



Maximum location: X=-9.00, Y=35.00

SAR Peak: 1.22 W/kg

SAR 10g (W/Kg)	0.650058
SAR 1g (W/Kg)	0.879641



Plot3: GSM1900, Right Cheek Middle

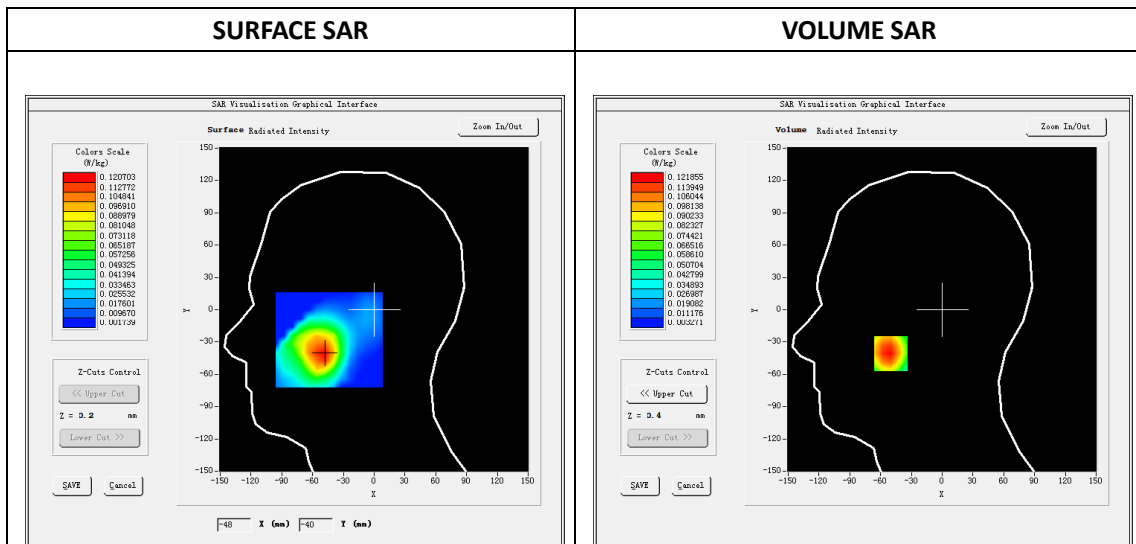
Type: Phone measurement
 Date of measurement: 01/24/2019
 Measurement duration: 22 minutes 31 seconds
 Mobile Phone IMEI number: --

A. Experimental conditions.

Area Scan	dx=8mm dy=8mm
Zoom Scan	5x5x7,dx=8mm dy=8mm dz=5mm
Phantom	Validation plane
Device Position	Right Cheek
Band	GSM1900
Channels	661
Signal	GSM (Duty cycle: 1:8.3)

B. SAR Measurement Results

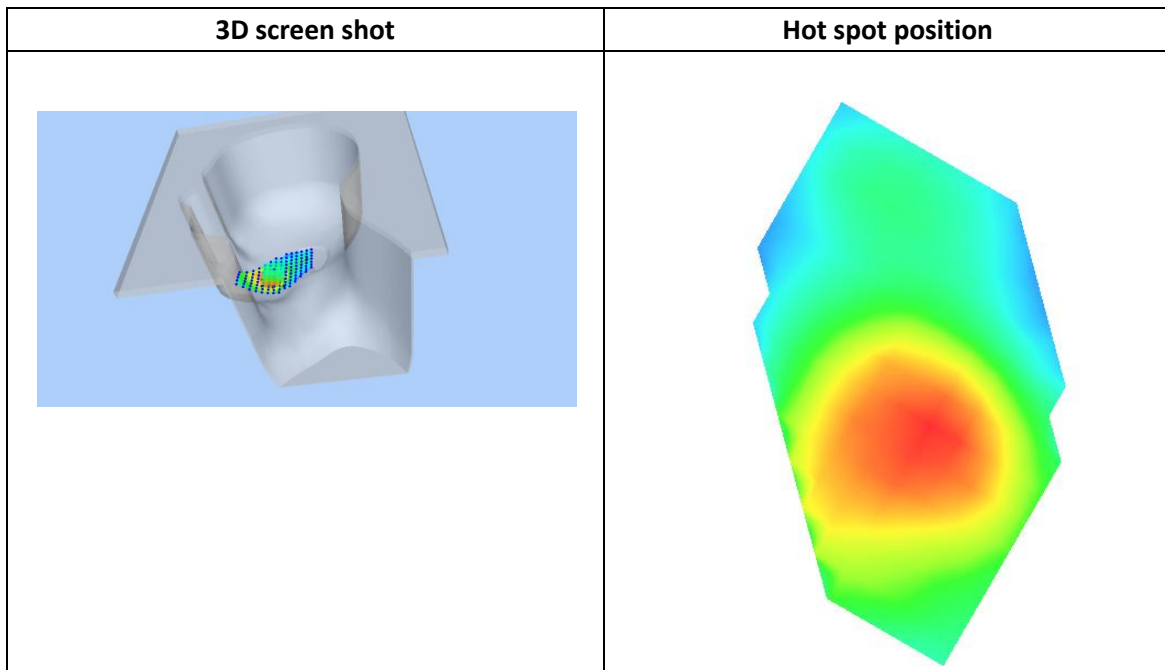
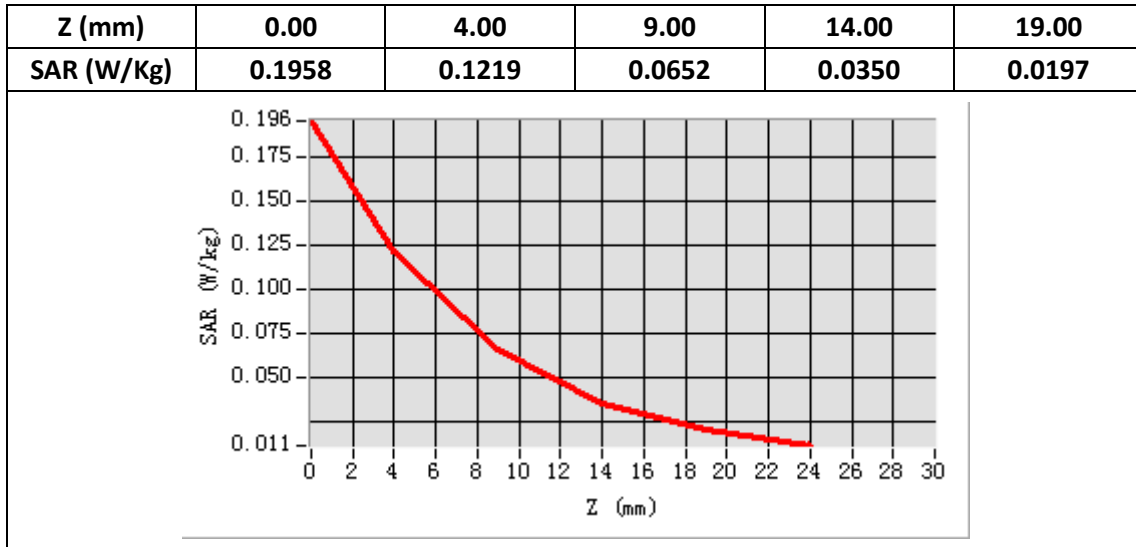
E-Field Probe	SATIMO SN_04/13_EP166
Frequency (MHz)	1880
Relative permittivity (real part)	40.55
Relative permittivity (imaginary part)	13.54
Conductivity (S/m)	1.45
Variation (%)	0.24
ConvF:	5.90



Maximum location: X=-50.00, Y=-41.00

SAR Peak: 0.20W/kg

SAR 10g (W/Kg)	0.064263
SAR 1g (W/Kg)	0.116494



Plot4: GPRS1900, Back Middle ,10mm

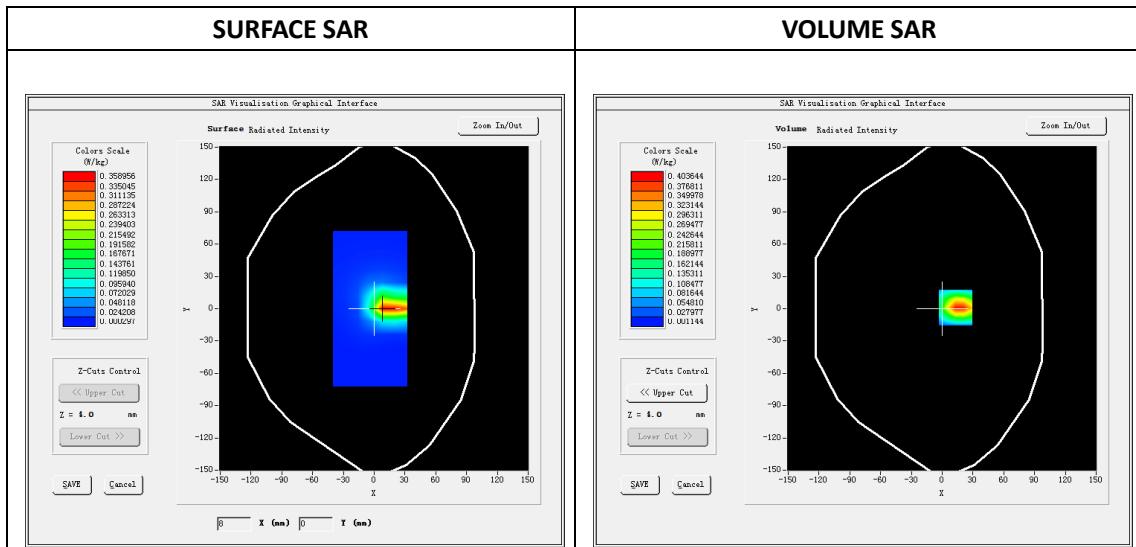
Type: Phone measurement
 Date of measurement: 01/24/2019
 Measurement duration: 22 minutes 35 seconds
 Mobile Phone IMEI number: --

A. Experimental conditions.

Area Scan	dx=8mm dy=8mm
Zoom Scan	5x5x7,dx=8mm dy=8mm dz=5mm
Phantom	Validation plane
Device Position	Back
Band	GPRS1900_4Tx
Channels	661
Signal	GPRS(Duty cycle: 1:2)

B. SAR Measurement Results

E-Field Probe	SATIMO SN_04/13_EP166
Frequency (MHz)	1880
Relative permittivity (real part)	53.36
Relative permittivity (imaginary part)	14.40
Conductivity (S/m)	1.52
Variation (%)	-0.31
ConvF:	6.10

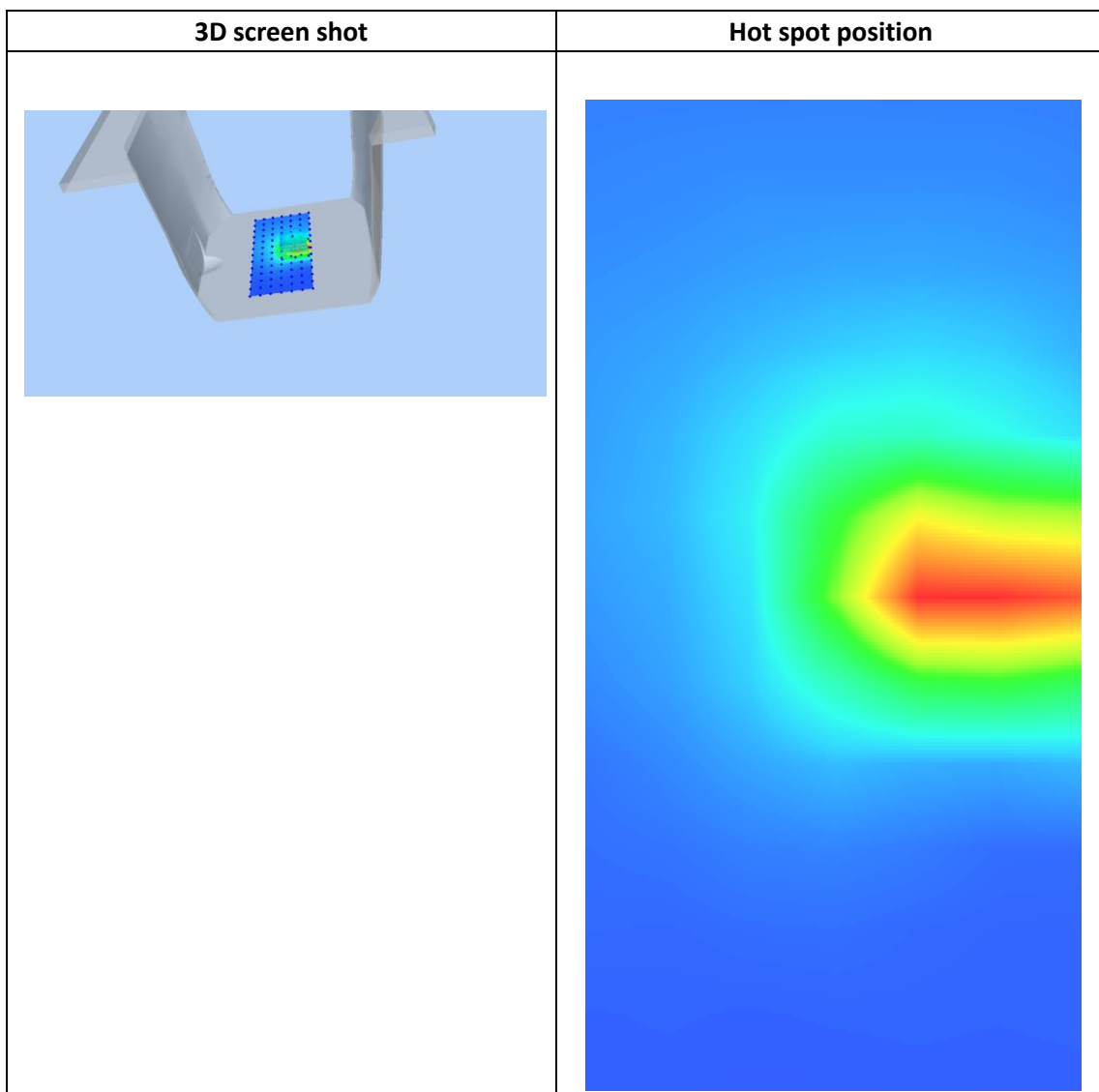
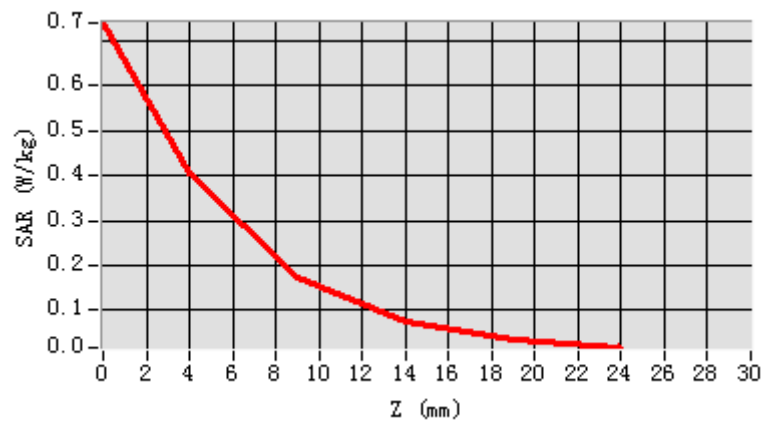


Maximum location: X=13.00, Y=1.00

SAR Peak: 0.76W/kg

SAR 10g (W/Kg)	0.164921
SAR 1g (W/Kg)	0.377489

Z (mm)	0.00	4.00	9.00	14.00	19.00
SAR (W/Kg)	0.7402	0.4036	0.1744	0.0732	0.0339



Plot 5: WCDMA850, Right Cheek, Middle

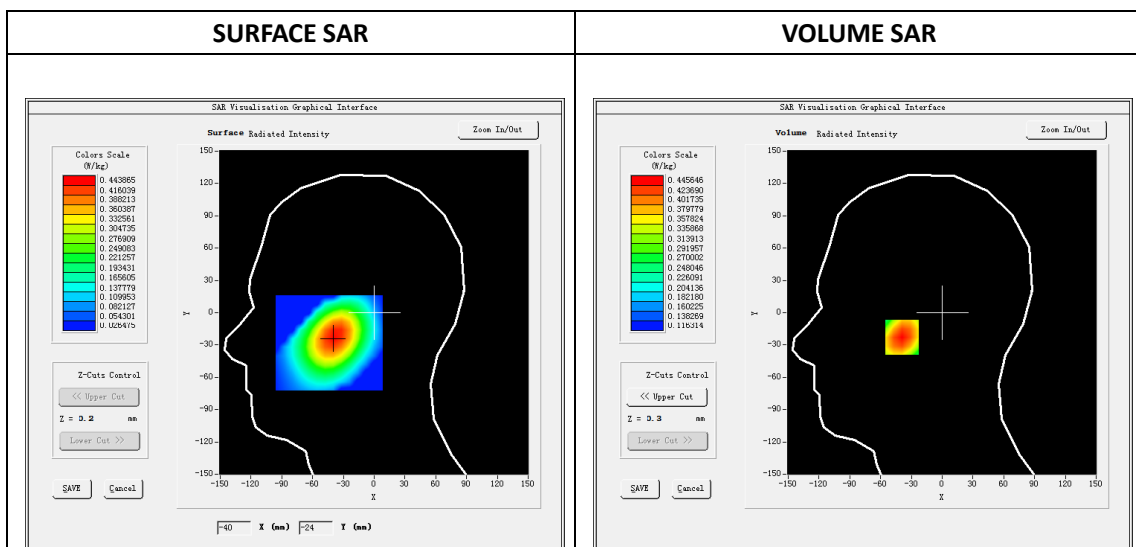
Type: Phone measurement
 Date of measurement: 01/22/2019
 Measurement duration: 22 minutes 26 seconds
 Mobile Phone IMEI number: --

A. Experimental conditions.

Area Scan	dx=8mm dy=8mm
ZoomScan	5x5x7,dx=8mm dy=8mm dz=5mm
Phantom	Validation plane
Device Position	Right Cheek
Band	Band5_WCDMA850
Channels	4183
Signal	WCDMA (Duty cycle: 1:1)

B. SAR Measurement Results

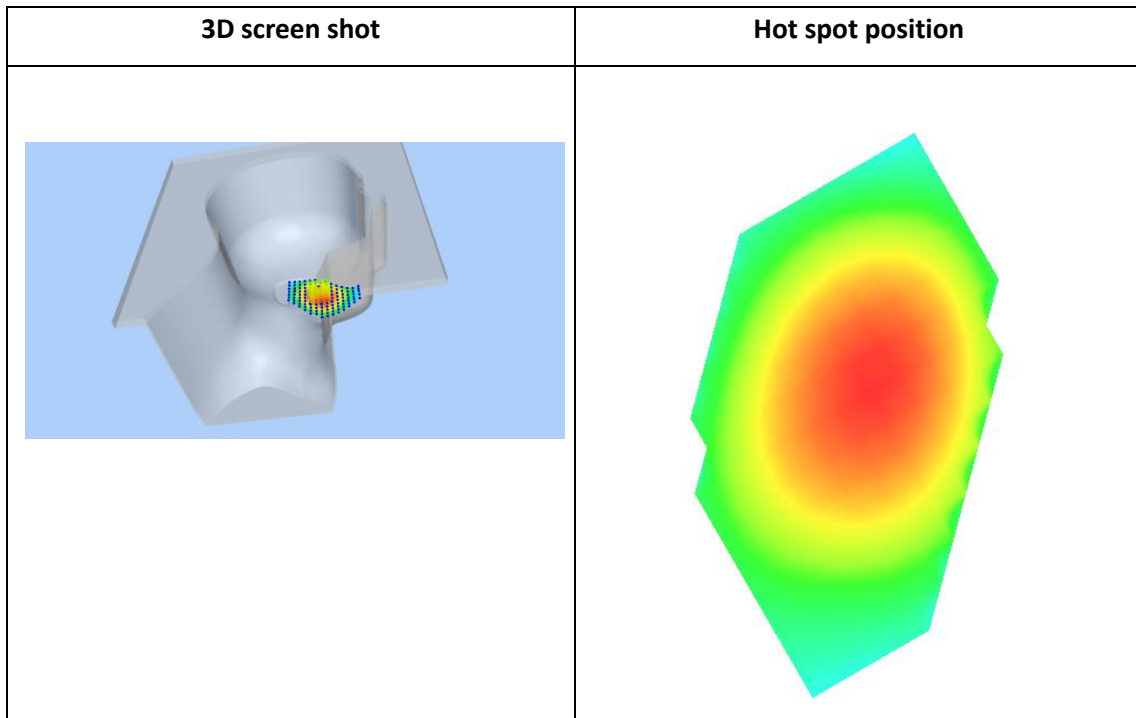
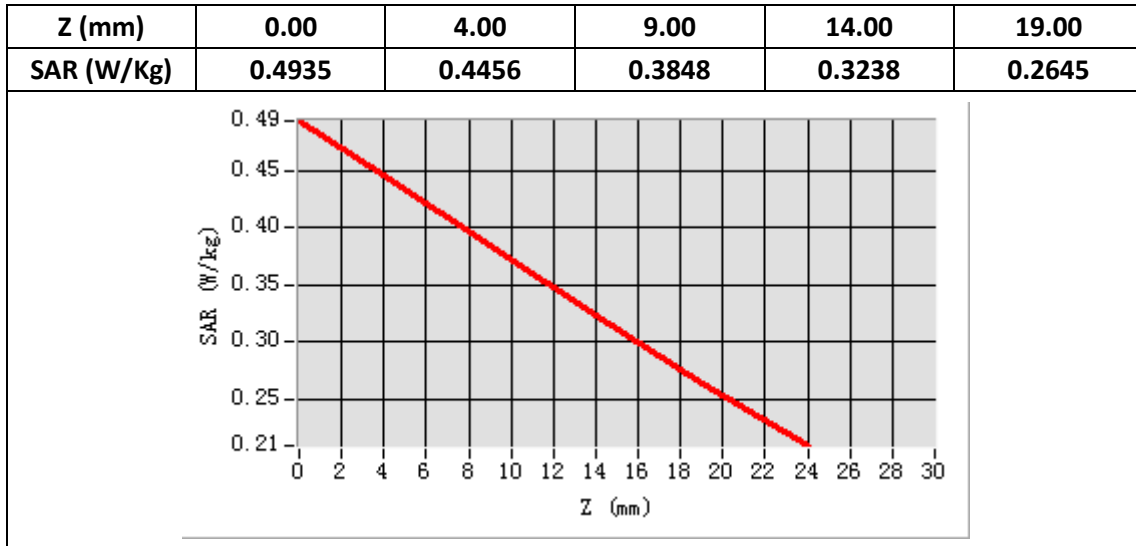
E-Field Probe	SATIMO SN_04/13_EP166
Frequency (MHz)	836.6
Relative permittivity (real part)	41.44
Relative permittivity (imaginary part)	18.27
Conductivity (S/m)	0.87
Variation (%)	3.29
ConvF:	5.85



Maximum location: X=-39.00, Y=-23.00

SAR Peak: 0.49W/kg

SAR 10g (W/Kg)	0.341733
SAR 1g (W/Kg)	0.437360



Plot 6: WCDMA850, BACK, Middle,10mm

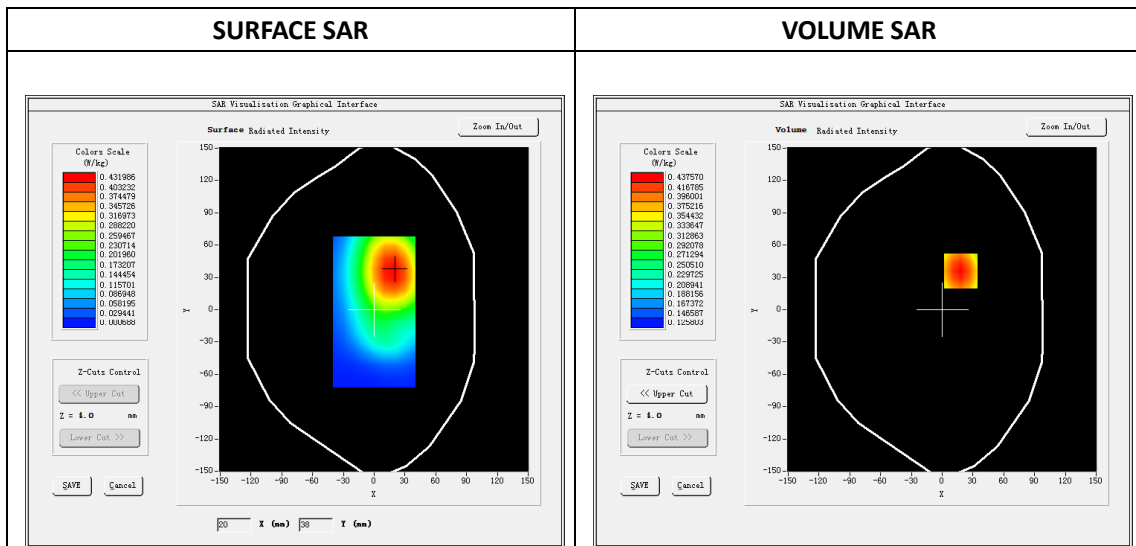
Type: Phone measurement
 Date of measurement: 01/22/2019
 Measurement duration: 22 minutes 26 seconds
 Mobile Phone IMEI number: --

A. Experimental conditions.

Area Scan	dx=8mm dy=8mm
ZoomScan	5x5x7,dx=8mm dy=8mm dz=5mm
Phantom	Validation plane
Device Position	Back
Band	Band5_WCDMA850
Channels	4183
Signal	WCDMA (Duty cycle: 1:1)

B. SAR Measurement Results

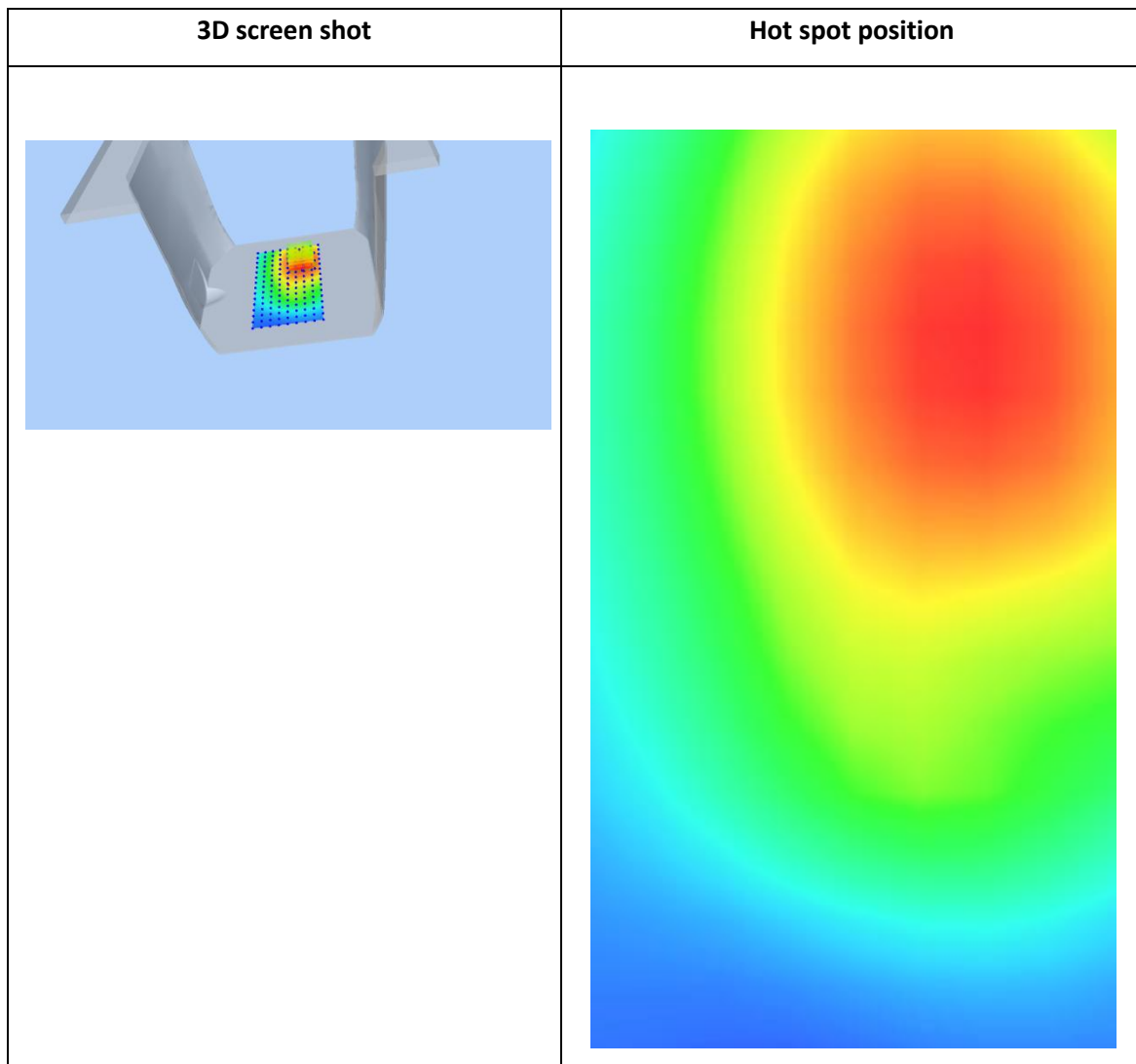
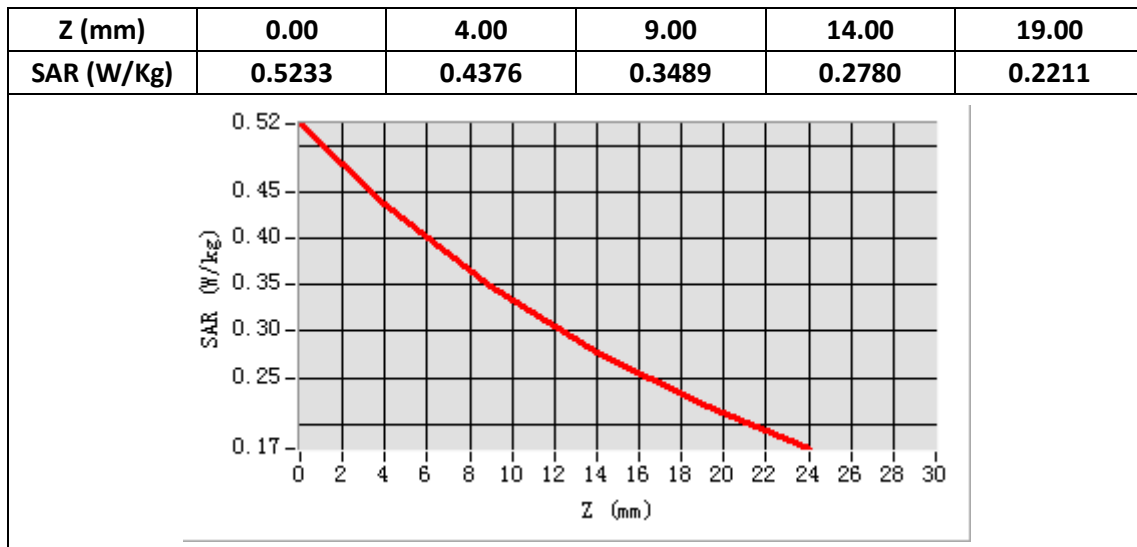
E-Field Probe	SATIMO SN_04/13_EP166
Frequency (MHz)	836.6
Relative permittivity (real part)	55.18
Relative permittivity (imaginary part)	21.12
Conductivity (S/m)	0.98
Variation (%)	-1.23
ConvF:	6.17



Maximum location: X=18.00, Y=36.00

SAR Peak: 0.52 W/kg

SAR 10g (W/Kg)	0.323953
SAR 1g (W/Kg)	0.429175



Plot 7: WCDMA1900, Right Cheek, Middle,10mm

Type: Phone measurement

Date of measurement: 01/24/2019

Measurement duration: 22 minutes 13 seconds

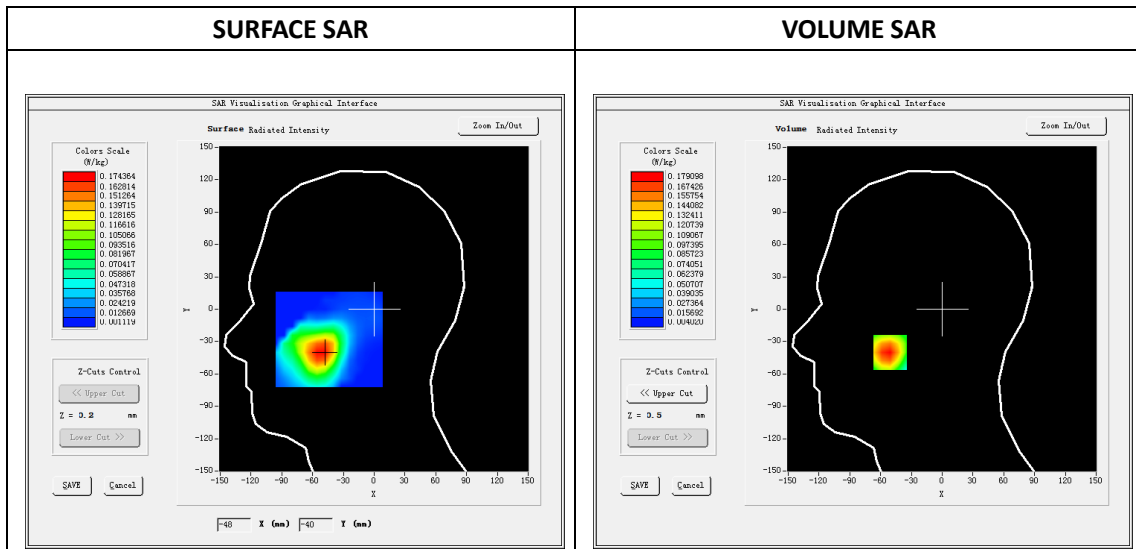
Mobile Phone IMEI number: --

A. Experimental conditions.

Area Scan	dx=8mm dy=8mm
ZoomScan	5x5x7,dx=8mm dy=8mm dz=5mm
Phantom	Validation plane
Device Position	Right Cheek
Band	Band2_WCDMA1900
Channels	9400
Signal	WCDMA (Duty cycle: 1:1)

B. SAR Measurement Results

E-Field Probe	SATIMO SN_04/13_EP166
Frequency (MHz)	1880
Relative permittivity (real part)	40.55
Relative permittivity (imaginary part)	13.54
Conductivity (S/m)	1.43
Variation (%)	1.40
ConvF:	5.90

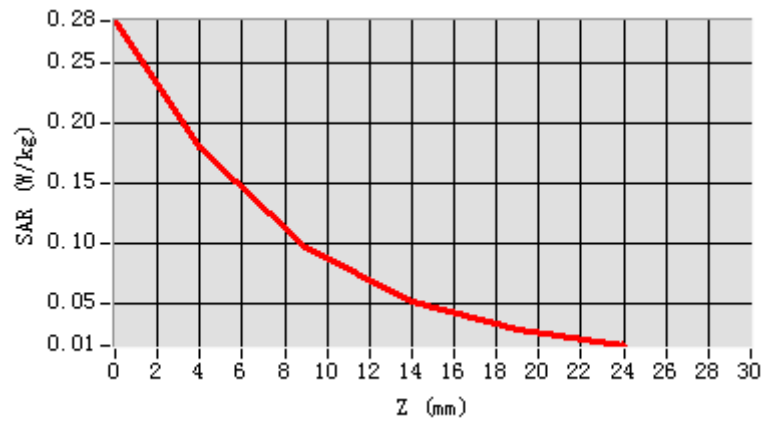


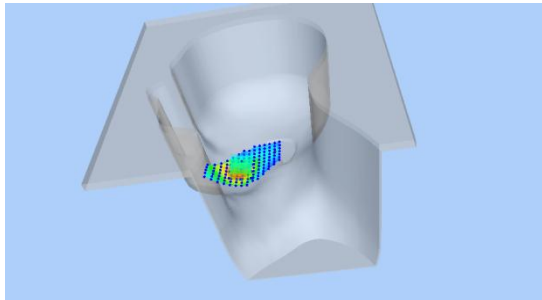
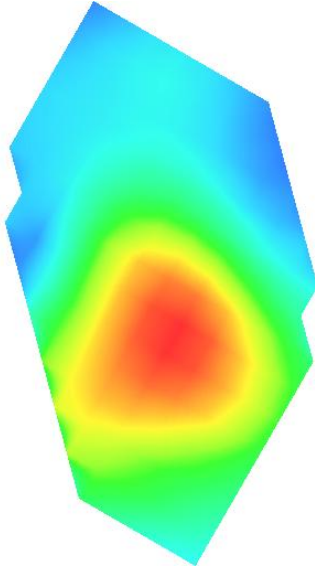
Maximum location: X=-51.00, Y=-40.00

SAR Peak: 0.29W/kg

SAR 10g (W/Kg)	0.091532
SAR 1g (W/Kg)	0.169874

Z (mm)	0.00	4.00	9.00	14.00	19.00
SAR (W/Kg)	0.2844	0.1791	0.0970	0.0519	0.0284



3D screen shot	Hot spot position
	

Plot 8: WCDMA1900,Back, Middle,10mm

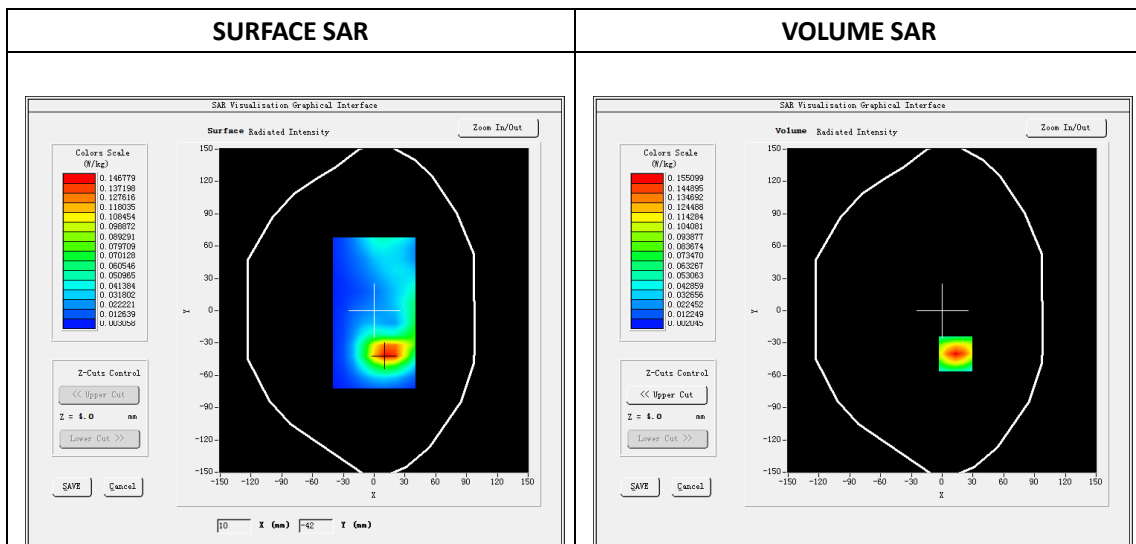
Type: Phone measurement
 Date of measurement: 01/24/2019
 Measurement duration: 22 minutes 21 seconds
 Mobile Phone IMEI number: --

A. Experimental conditions.

Area Scan	dx=8mm dy=8mm
ZoomScan	5x5x7,dx=8mm dy=8mm dz=5mm
Phantom	Validation plane
Device Position	Back
Band	Band2_WCDMA1900
Channels	9400
Signal	WCDMA (Duty cycle: 1:1)

B. SAR Measurement Results

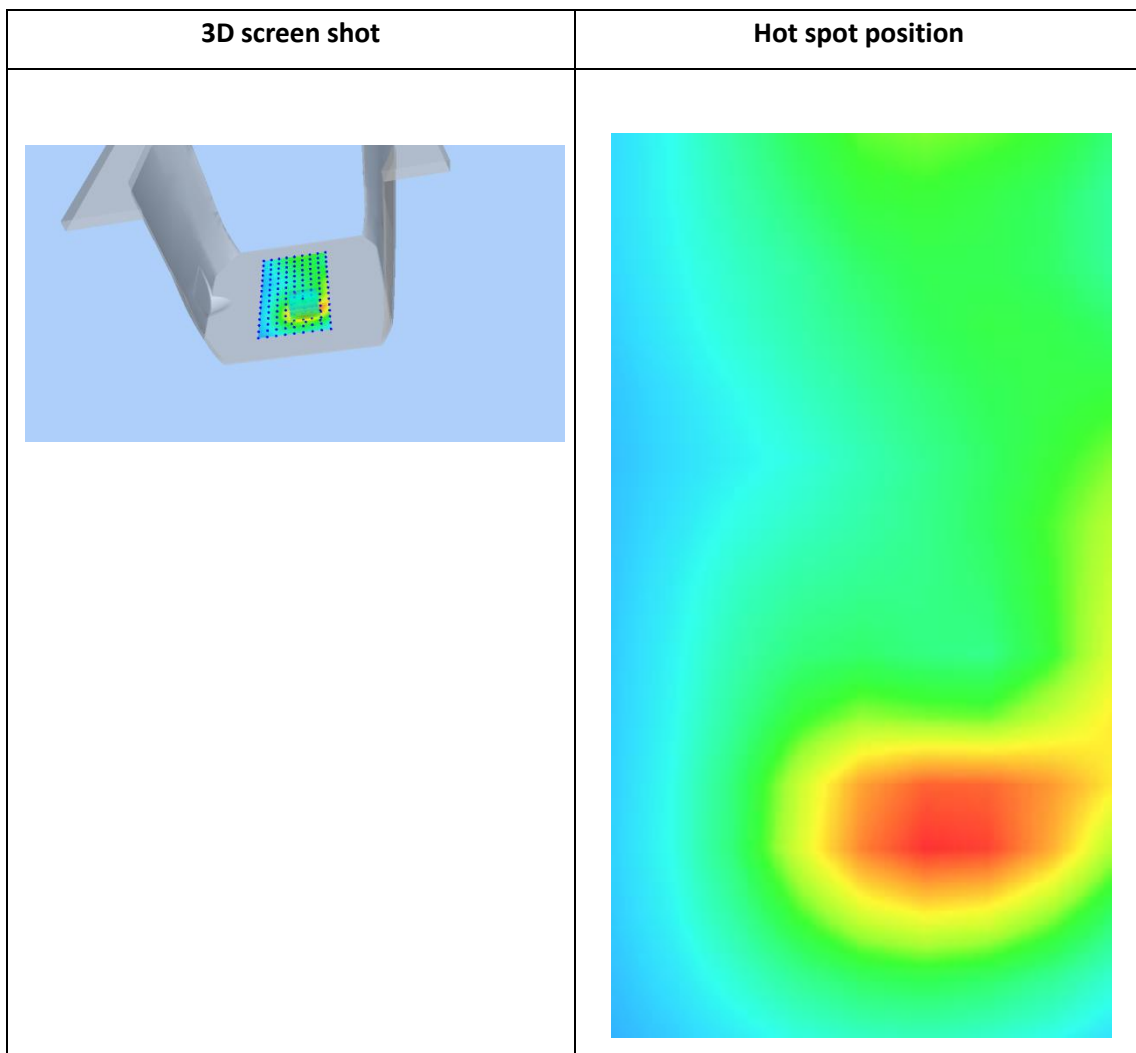
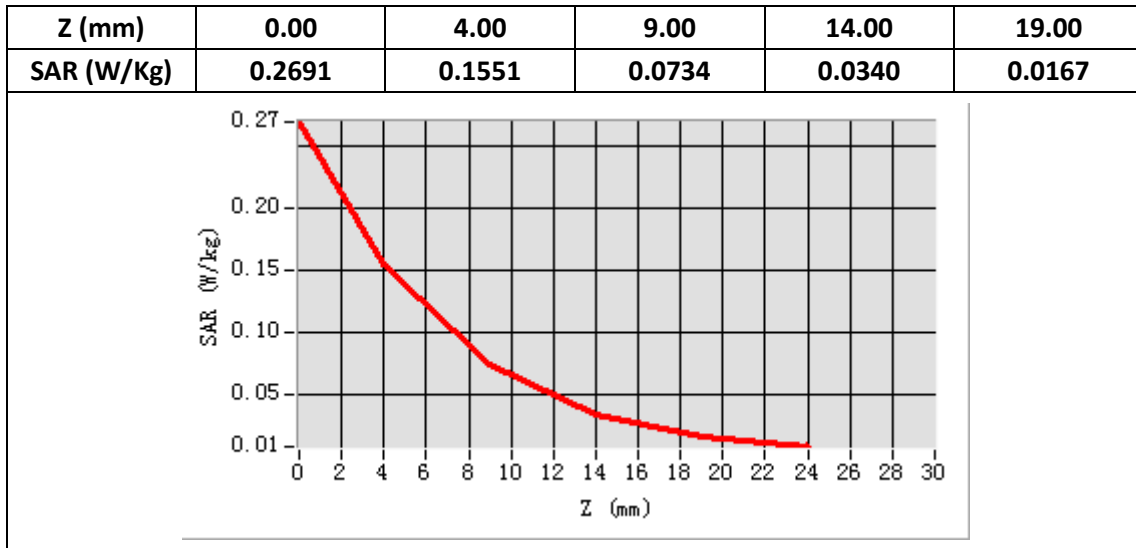
E-Field Probe	SATIMO SN_04/13_EP166
Frequency (MHz)	1880
Relative permittivity (real part)	53.36
Relative permittivity (imaginary part)	14.40
Conductivity (S/m)	1.52
Variation (%)	-0.45
ConvF:	6.10



Maximum location: X=13.00, Y=-40.00

SAR Peak: 0.27W/kg

SAR 10g (W/Kg)	0.070149
SAR 1g (W/Kg)	0.144503



Plot 9: WIFI 2.4G 802.11b, Left Cheek, Middle

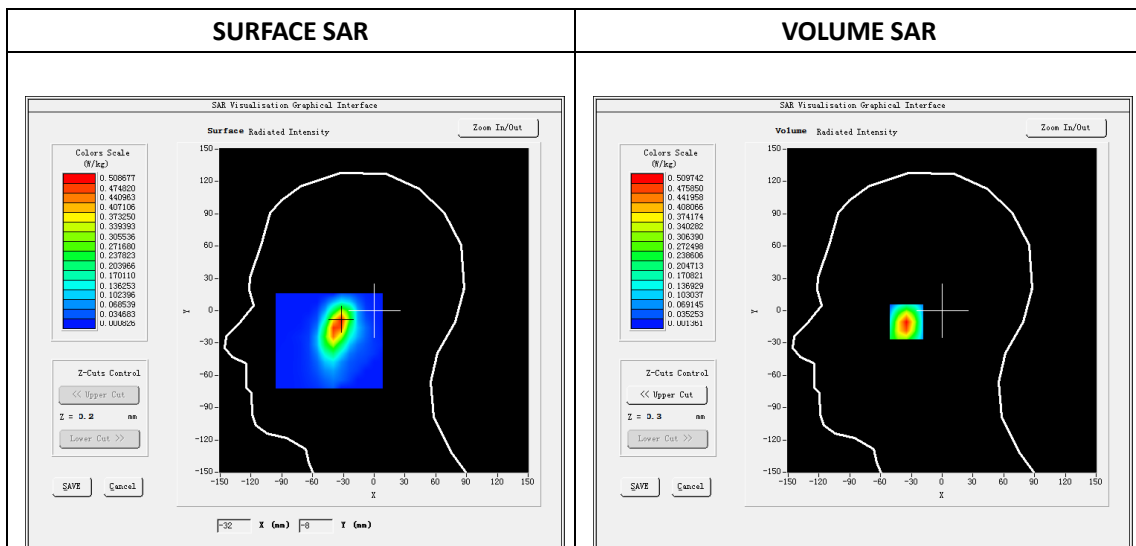
Type: Phone measurement
 Date of measurement: 01/25/2019
 Measurement duration: 22 minutes 13 seconds
 Mobile Phone IMEI number: --

A. Experimental conditions.

Area Scan	dx=8mm dy=8mm
ZoomScan	5x5x7,dx=8mm dy=8mm dz=5mm
Phantom	Validation plane
Device Position	Left Cheek
Band	WIFI
Channels	6
Signal	OFDM (Duty cycle: 1:1)

B. SAR Measurement Results

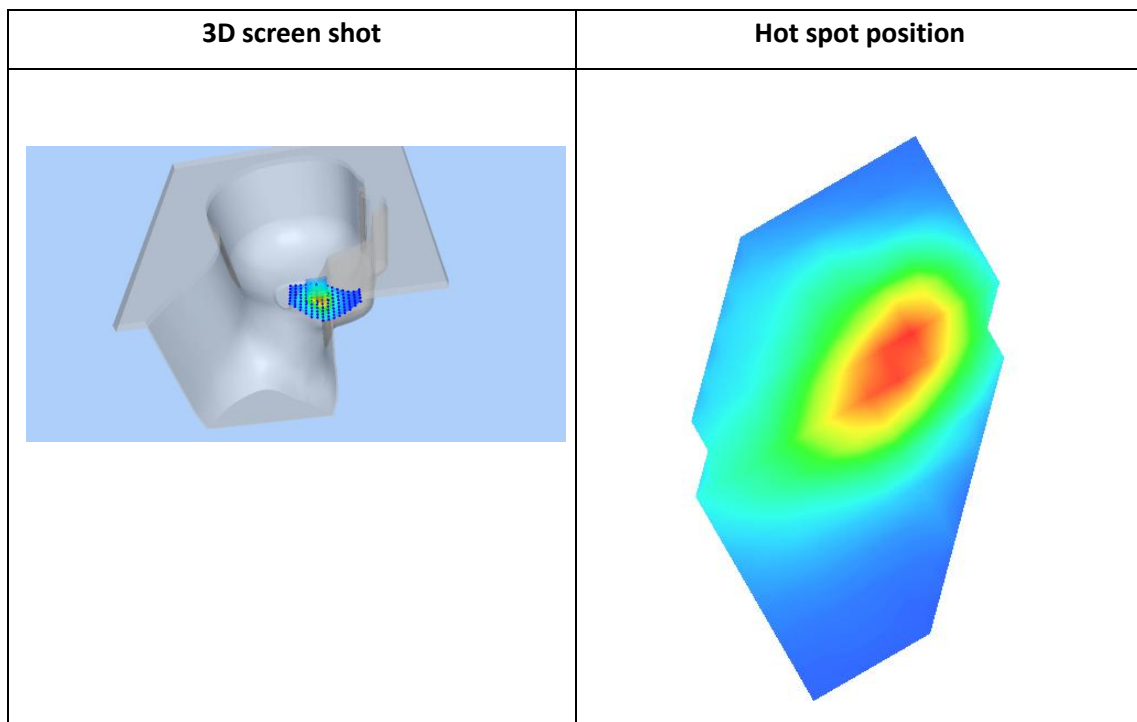
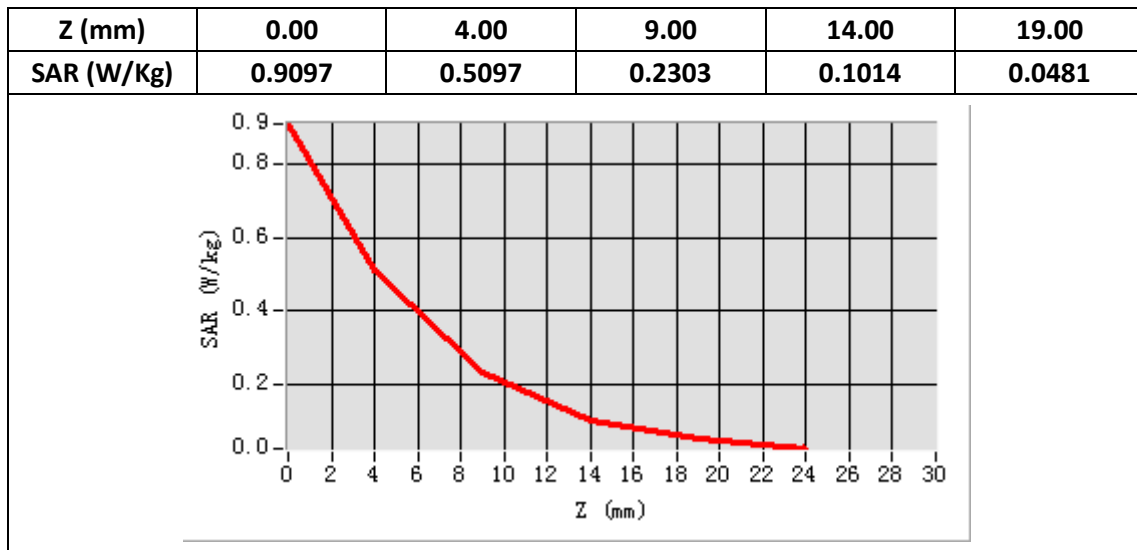
E-Field Probe	SATIMO SN_04/13_EP166
Frequency (MHz)	2437
Relative permittivity (real part)	39.25
Relative permittivity (imaginary part)	13.44
Conductivity (S/m)	1.83
Variation (%)	-3.23
ConvF:	5.35



Maximum location: X=-33.00, Y=-10.00

SAR Peak: 0.92W/kg

SAR 10g (W/Kg)	0.215376
SAR 1g (W/Kg)	0.503792



Plot 10: WIFI 2.4G 802.11b, Back ,Middle,10mm

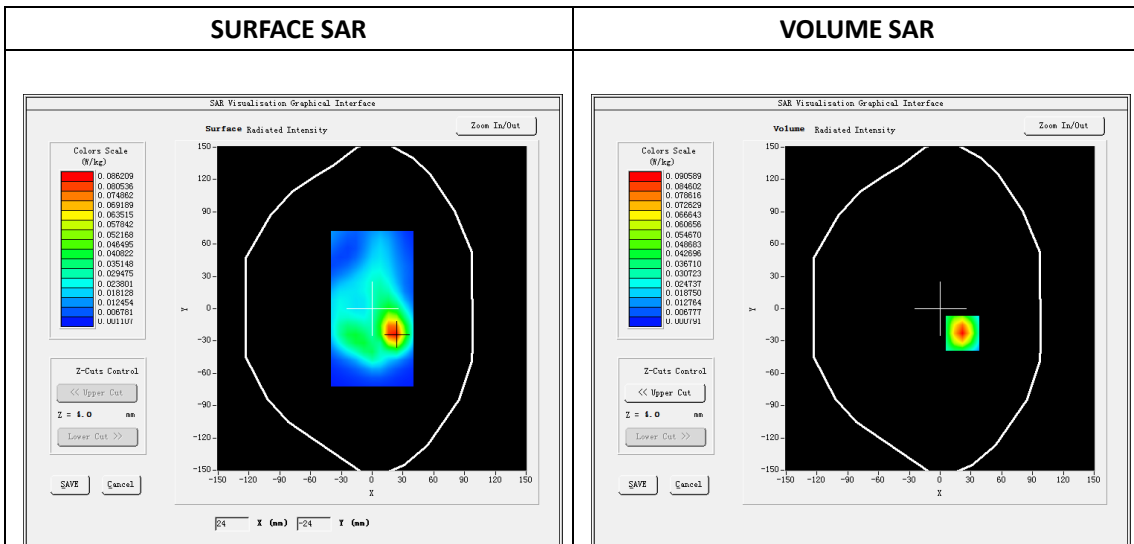
Type: Phone measurement
 Date of measurement: 01/21/2019
 Measurement duration: 22 minutes 25 seconds
 Mobile Phone IMEI number: --

A. Experimental conditions.

Area Scan	dx=8mm dy=8mm
ZoomScan	5x5x7,dx=8mm dy=8mm dz=5mm
Phantom	Validation plane
Device Position	Back
Band	WIFI
Channels	6
Signal	OFDM (Duty cycle: 1:1)

B. SAR Measurement Results

E-Field Probe	SATIMO SN_04/13_EP166
Frequency (MHz)	2437
Relative permittivity (real part)	52.74
Relative permittivity (imaginary part)	14.54
Conductivity (S/m)	1.98
Variation (%)	-2.48
ConvF:	5.56



Maximum location: X=22.00, Y=-23.00

SAR Peak: 0.15W/kg

SAR 10g (W/Kg)	0.041560
SAR 1g (W/Kg)	0.089382

