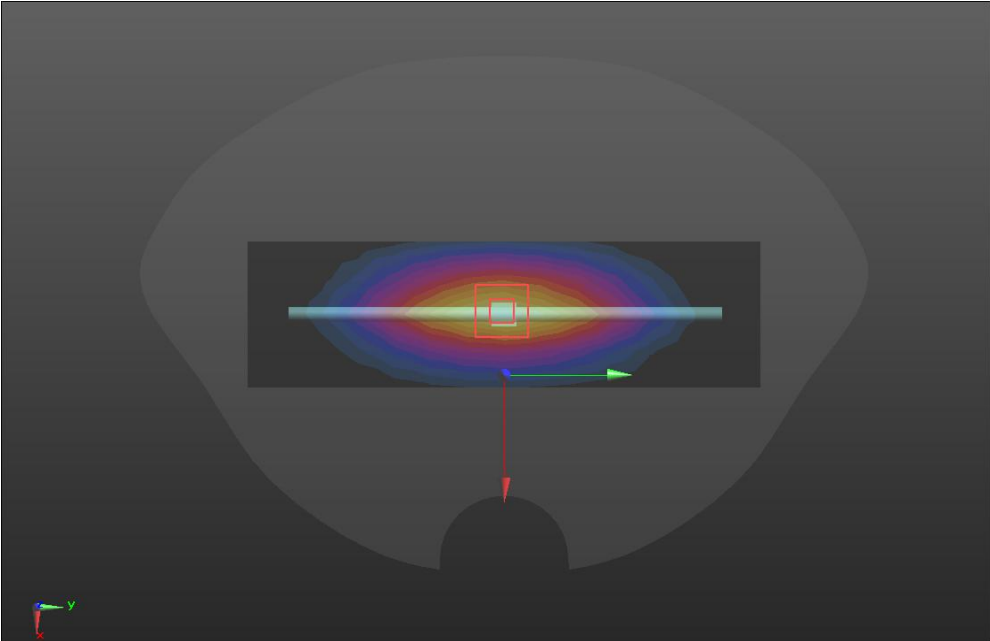


ANNEX A – TEST PLOTS

System check	750MHz(2021.12.16)
<p>Communication System: UID 0, CW (0); Frequency: 750 MHz; Duty Cycle: 1:1 Medium parameters used: $f = 750 \text{ MHz}$; $\sigma = 0.93 \text{ S/m}$; $\epsilon_r = 43.07$; $\rho = 1000 \text{ kg/m}^3$ Phantom section: Flat Section</p> <p>DASY5 Configuration:</p> <ul style="list-style-type: none"> Probe: ES3DV3 - SN3127; ConvF(6.35, 6.35, 6.35) @ 750 MHz; Calibrated: 2021/8/27; Sensor-Surface: 3mm (Mechanical Surface Detection) Electronics: DAE4 Sn546; Calibrated: 2021/8/25 Phantom: Twin-SAM 1660; Type: QD 000 P40 CD; Serial: 1660 Measurement SW: DASY52, Version 52.8 (8); SEMCAD X Version 14.6.10 (7373) <p>750/Dipole 750MHz/Area Scan (5x15x1): Measurement grid: dx=15mm, dy=15mm Maximum value of SAR (measured) = 2.83 W/kg</p> <p>750/Dipole 750MHz/Zoom Scan (5x5x7)/Cube 0: Measurement grid: dx=8mm, dy=8mm, dz=5mm Reference Value = 58.50 V/m; Power Drift = 0.09 dB Peak SAR (extrapolated) = 3.24 W/kg SAR(1 g) = 2.14 W/kg; SAR(10 g) = 1.47 W/kg Maximum value of SAR (measured) = 2.85 W/kg</p> 	

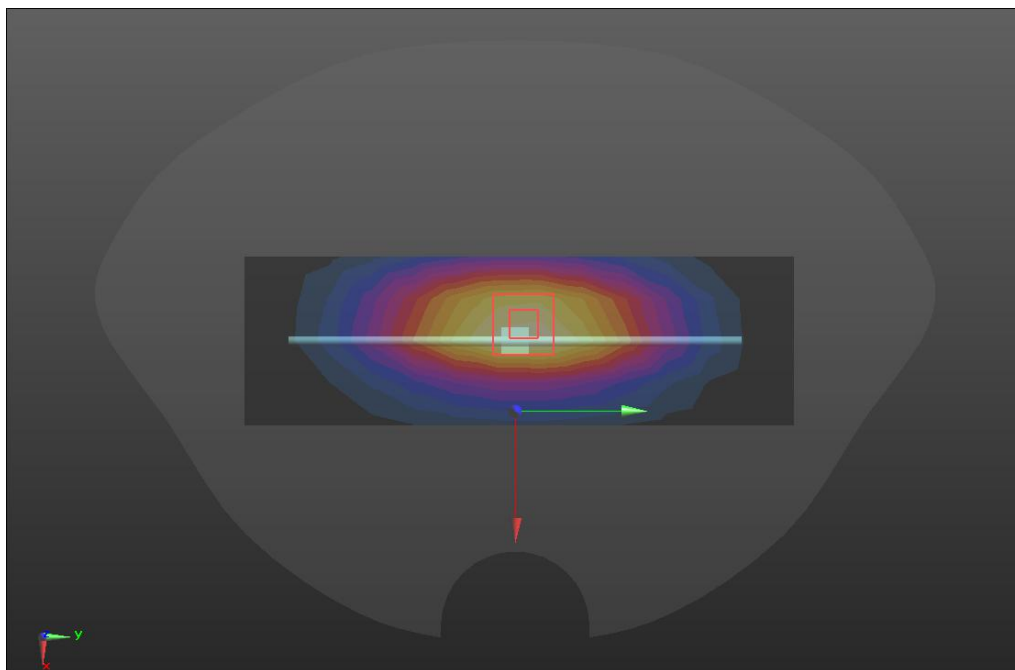
SRTC performed system check by using 250mw at antenna port

System check	835MHz(2021.12.17)
--------------	--------------------

Communication System: UID 0, CW (0); Frequency: 835 MHz. Duty Cycle: 1:1
Medium parameters used (interpolated): $f = 835$ MHz; $\sigma = 0.93$ S/m; $\epsilon_r = 42.99$; $\rho = 1000$ kg/m³
Phantom section: Flat Section

DASY Configuration:

- Probe: ES3DV3 - SN3127; ConvF(6.13, 6.13, 6.13) @ 835 MHz; Calibrated: 2021/8/27
- Sensor-Surface: 3mm (Mechanical Surface Detection)
- Electronics: DAE4 Sn546; Calibrated: 2021/8/25
- Phantom: Twin-SAM 1660; Type: QD 000 P40 CD; Serial: 1660
- Measurement SW: DASY52, Version 52.8 (8); SEMCAD X Version 14.6.10 (7373)
D835/Dipole 835MHz/Area Scan (5x14x1): Measurement grid: dx=15mm, dy=15mm
 Maximum value of SAR (measured) = 2.71 W/kg
D835/Dipole 835MHz/Zoom Scan (5x5x7)/Cube 0: Measurement grid: dx=8mm, dy=8mm, dz=5mm
 Reference Value = 56.70 V/m; Power Drift = 0.05 dB
 Peak SAR (extrapolated) = 3.50 W/kg
SAR(1 g) = 2.32 W/kg; SAR(10 g) = 1.52 W/kg
 Maximum value of SAR (measured) = 3.04 W/kg



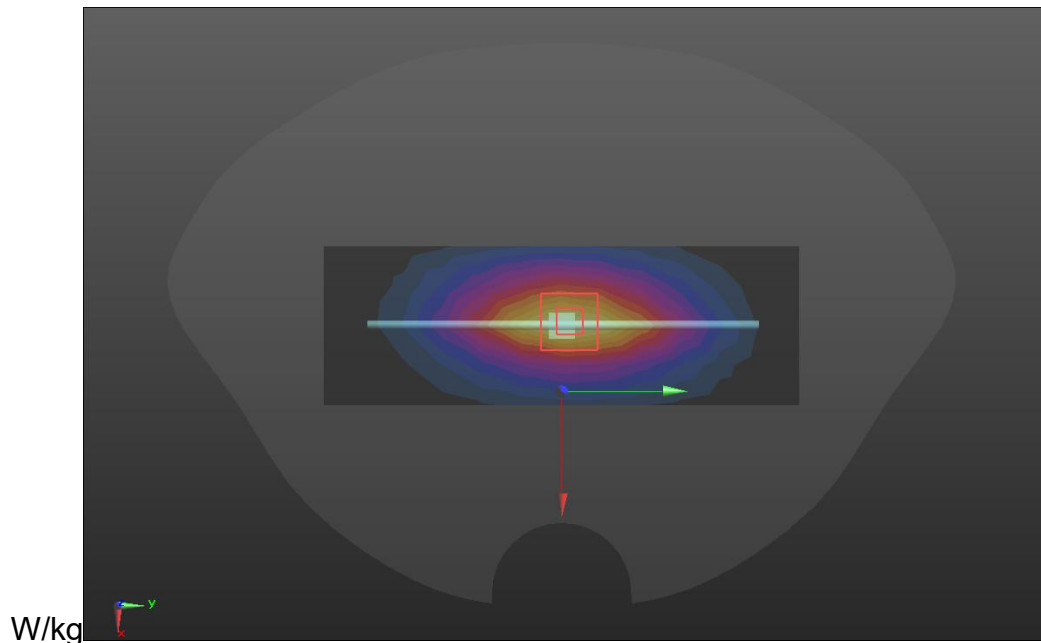
SRTC performed system check by using 250mw at antenna port

System check	900MHz(2021.12.20)
---------------------	---------------------------

Communication System: UID 0, CW (0); Frequency: 900 MHz; Duty Cycle: 1:1
Medium parameters used: $f = 900 \text{ MHz}$; $\sigma = 1.01 \text{ S/m}$; $\epsilon_r = 40.05$; $\rho = 1000 \text{ kg/m}^3$
Phantom section: Flat Section

DASY Configuration:

- Probe: ES3DV3 - SN3127; ConvF(6.13, 6.13, 6.13) @ 900 MHz; Calibrated: 2021/8/27
- Sensor-Surface: 3mm (Mechanical Surface Detection)
- Electronics: DAE4 Sn546; Calibrated: 2021/8/25
- Phantom: Twin-SAM 1660; Type: QD 000 P40 CD; Serial: 1660
- Measurement SW: DASY52, Version 52.8 (8); SEMCAD X Version 14.6.10 (7373)
D900/Dipole 900MHz/Area Scan (5x13x1): Measurement grid: $dx=15\text{mm}$, $dy=15\text{mm}$
 Maximum value of SAR (measured) = 3.85 W/kg
D900/Dipole 900MHz/Zoom Scan (5x5x7)/Cube 0: Measurement grid: $dx=8\text{mm}$, $dy=8\text{mm}$, $dz=5\text{mm}$
 Reference Value = 66.17 V/m; Power Drift = 0.00 dB
 Peak SAR (extrapolated) = 4.74 W/kg
SAR(1 g) = 2.68 W/kg; SAR(10 g) = 1.83 W/kg
 Maximum value of SAR (measured) = 3.99



SRTC performed system check by using 250mw at antenna port

System check	1800MHz(2021.12.21)
Communication System: UID 0, CW (0); Frequency: 1800 MHz; Duty Cycle: 1:1 Medium parameters used: $f = 1800 \text{ MHz}$; $\sigma = 1.4 \text{ S/m}$; $\epsilon_r = 39.31$; $\rho = 1000 \text{ kg/m}^3$	

Phantom section: Flat Section

DASY5 Configuration:

- Probe: ES3DV3 - SN3127; ConvF(5.08, 5.08, 5.08) @ 1800 MHz; Calibrated: 2021/8/27
- Sensor-Surface: 3mm (Mechanical Surface Detection)
- Electronics: DAE4 Sn546; Calibrated: 2021/8/25
- Phantom: Twin-SAM 1660; Type: QD 000 P40 CD; Serial: 1660
- Measurement SW: DASY52, Version 52.8 (8); SEMCAD X Version 14.6.10 (7373)
- **D1800/Dipole 1800MHz/Area Scan (5x9x1):** Measurement grid: dx=15mm, dy=15mm

Maximum value of SAR (measured) = 15.3 W/kg

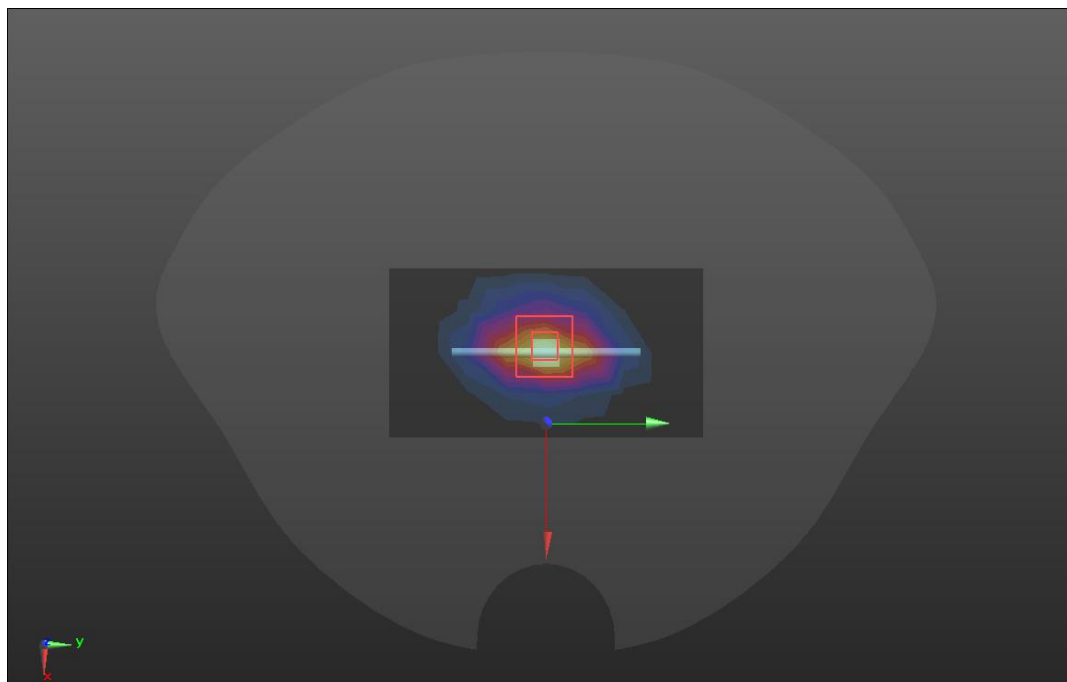
D1800/Dipole 1800MHz/Zoom Scan (5x5x7)/Cube 0: Measurement grid: dx=8mm, dy=8mm, dz=5mm

Reference Value = 107.8 V/m; Power Drift = 0.05 dB

Peak SAR (extrapolated) = 18.7 W/kg

SAR(1 g) = 10.0 W/kg; SAR(10 g) = 5.22 W/kg

Maximum value of SAR (measured) = 15.6 W/kg

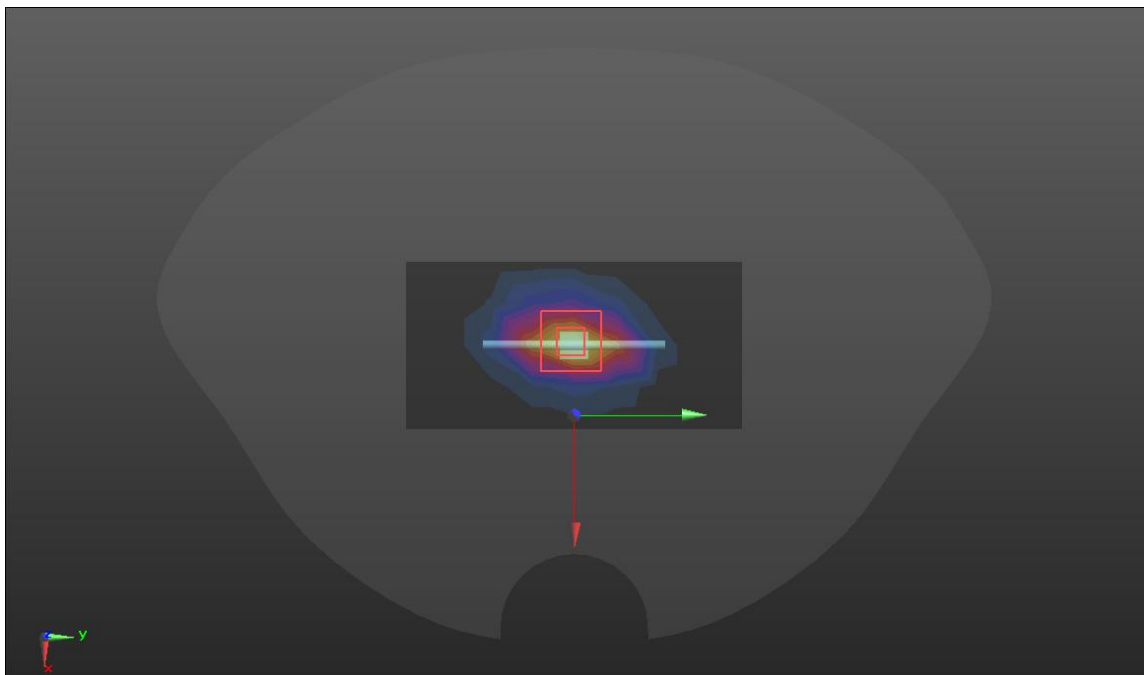


SRTC performed system check by using 250mw at antenna port

System check	2000MHz(2021.12.22)
Communication System: UID 0, CW (0); Frequency: 2000 MHz; Duty Cycle: 1:1 Medium parameters used: $f = 2000 \text{ MHz}$; $\sigma = 1.47 \text{ S/m}$; $\epsilon_r = 41.31$; $\rho = 1000 \text{ kg/m}^3$ Phantom section: Flat Section	

DASY5 Configuration:

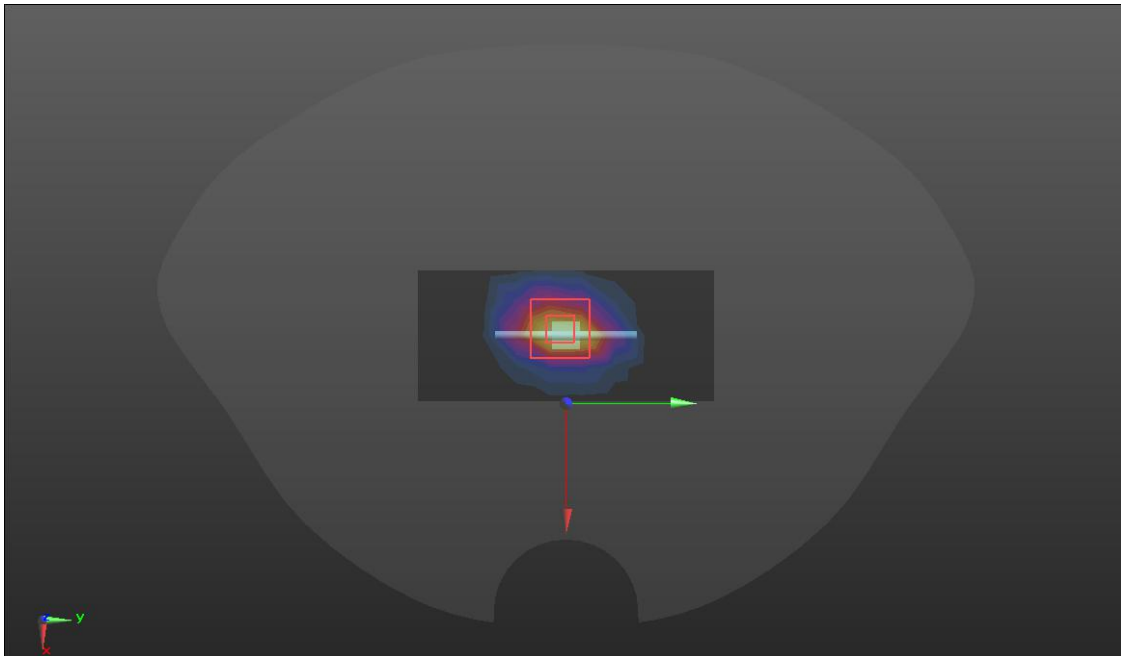
- Probe: ES3DV3 - SN3127; ConvF(5, 5, 5) @ 2000 MHz; Calibrated: 2021/8/27
 - Sensor-Surface: 3mm (Mechanical Surface Detection)
 - Electronics: DAE4 Sn546; Calibrated: 2021/8/25
 - Phantom: Twin-SAM 1660; Type: QD 000 P40 CD; Serial: 1660
 - Measurement SW: DASY52, Version 52.8 (8); SEMCAD X Version 14.6.10 (7373)
- D2000/Dipole 2000MHz/Area Scan (5x9x1):** Measurement grid: dx=15mm, dy=15mm
Maximum value of SAR (measured) = 15.2 W/kg
- D2000/Dipole 2000MHz/Zoom Scan (5x5x7)/Cube 0:** Measurement grid: dx=8mm, dy=8mm, dz=5mm
Reference Value = 107.6 V/m; Power Drift = 0.04 dB
Peak SAR (extrapolated) = 18.9 W/kg
SAR(1 g) = 10.64 W/kg; SAR(10 g) = 4.99 W/kg
Maximum value of SAR (measured) = 15.5 W/kg



SRTC performed system check by using 250mw at antenna por

System check	2450MHz(2021.12.23)
<p>Communication System: UID 0, CW (0); Frequency: 2450 MHz; Duty Cycle: 1:1 Medium parameters used: $f = 2450$ MHz; $\sigma = 1.74$ S/m; $\epsilon_r = 40.83$; $\rho = 1000$ kg/m³ Phantom section: Flat Section</p> <p>DASY5 Configuration:</p>	

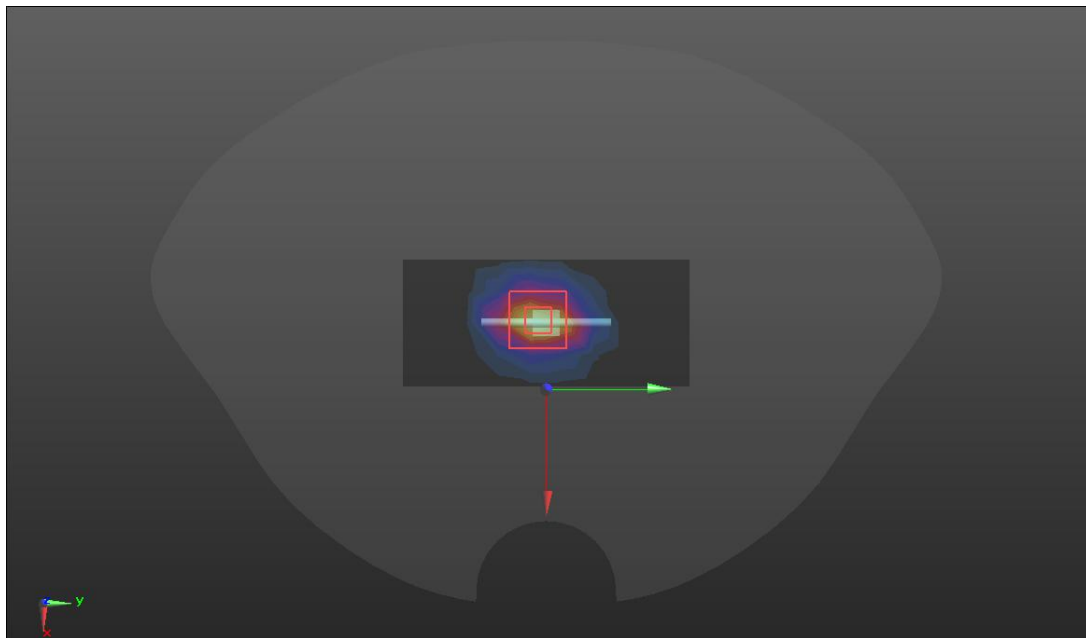
- Probe: ES3DV3 - SN3127; ConvF(4.5, 4.5, 4.5) @ 2450 MHz; Calibrated: 2021/8/27
- Sensor-Surface: 3mm (Mechanical Surface Detection)
- Electronics: DAE4 Sn546; Calibrated: 2021/8/25
- Phantom: Twin-SAM 1660; Type: QD 000 P40 CD; Serial: 1660
- Measurement SW: DASY52, Version 52.8 (8); SEMCAD X Version 14.6.10 (7373)
- **D2450/Dipole 2450MHz/Area Scan (5x10x1)**: Measurement grid: dx=12mm, dy=12mm
Maximum value of SAR (measured) = 18.1 W/kg
- **D2450/Dipole 2450MHz/Zoom Scan (5x5x7)/Cube 0**: Measurement grid: dx=8mm, dy=8mm, dz=5mm
Reference Value = 107.6 V/m; Power Drift = 0.06 dB
Peak SAR (extrapolated) = 25.1 W/kg
SAR(1 g) = 12.69 W/kg; SAR(10 g) = 6.36 W/kg
Maximum value of SAR (measured) = 20.3 W/kg



SRTC performed system check by using 250mw at antenna port

System check	2600MHz(2021.12.24)
<p>Communication System: UID 0, CW (0); Frequency: 2600 MHz; Duty Cycle: 1:1 Medium parameters used: $f = 2600$ MHz; $\sigma = 1.92$ S/m; $\epsilon_r = 38.65$; $\rho = 1000$ kg/m³ Phantom section: Flat Section</p> <p>DASY5 Configuration:</p> <ul style="list-style-type: none"> • Probe: ES3DV3 - SN3127; ConvF(4.33, 4.33, 4.33) @ 2600 MHz; Calibrated: 2021/8/27 	

- Sensor-Surface: 3mm (Mechanical Surface Detection)
- Electronics: DAE4 Sn546; Calibrated: 2021/8/25
- Phantom: Twin-SAM 1660; Type: QD 000 P40 CD; Serial: 1660
- Measurement SW: DASY52, Version 52.8 (8); SEMCAD X Version 14.6.10 (7373)
- **D2600/Dipole 2600MHz/Area Scan (5x10x1):** Measurement grid: dx=12mm, dy=12mm
Maximum value of SAR (measured) = 21.0 W/kg
- **D2600/Dipole 2600MHz/Zoom Scan (5x5x7)/Cube 0:** Measurement grid: dx=8mm, dy=8mm, dz=5mm
Reference Value = 107.0 V/m; Power Drift = 0.00 dB
Peak SAR (extrapolated) = 27.8 W/kg
- **SAR(1 g) = 14.02 W/kg; SAR(10 g) = 6.53 W/kg**
Maximum value of SAR (measured) = 21.7 W/kg



SRTC performed system check by using 250mw at antenna port

GSM 850

Hotspot	Back(2021.12.17)
Communication System: UID 0, Generic GSM (0); Frequency: 836.6 MHz;Duty Cycle: 4:8	
Medium parameters used (interpolated): f = 836.6 MHz; $\sigma = 0.905$ S/m; $\epsilon_r = 41.528$; $\rho = 1000$ kg/m ³	
Phantom section: Flat Section	
DASY5 Configuration:	
<ul style="list-style-type: none"> • Probe: ES3DV3 - SN3127; ConvF(6.13, 6.13, 6.13); Calibrated: 2021/8/27; 	

- Sensor-Surface: 3mm (Mechanical Surface Detection)
- Electronics: DAE4 Sn546; Calibrated: 2021/8/25
- Phantom: Twin-SAM 1660; Type: QD 000 P40 CD; Serial: 1660
- Measurement SW: DASY52, Version 52.8 (8); SEMCAD X Version 14.6.10 (7373)

BACK 2/GSM850 4TX 2/Area Scan (14x8x1): Measurement grid: dx=15mm, dy=15mm

Maximum value of SAR (measured) = 1.30 W/kg

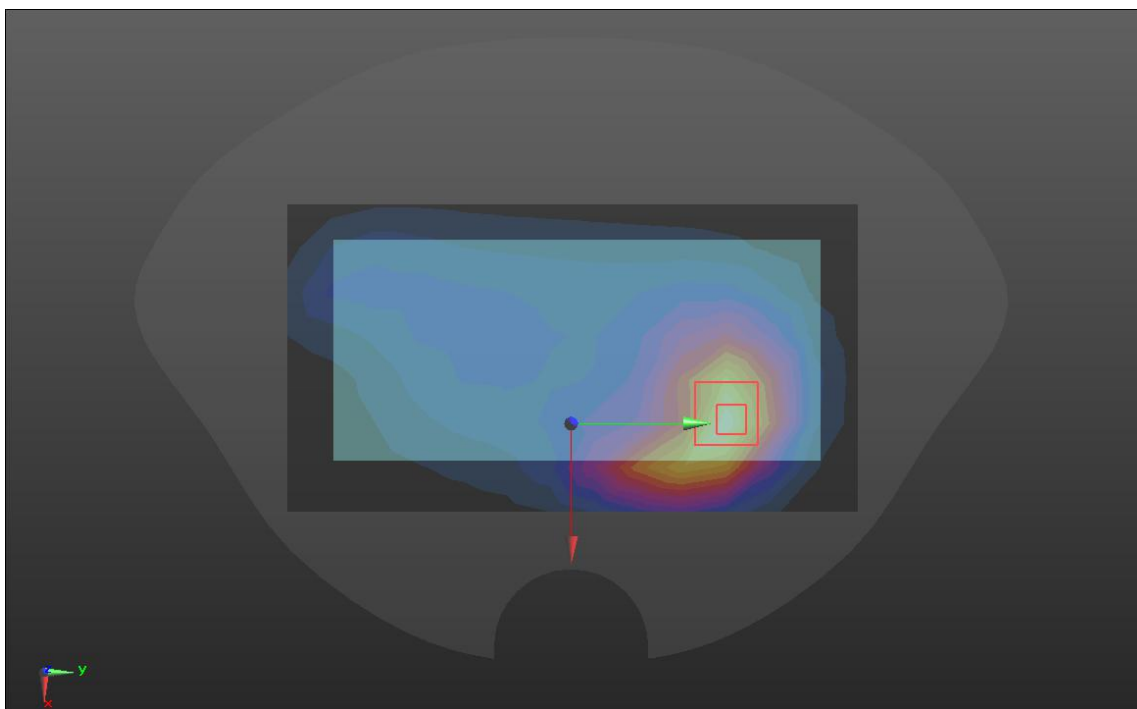
BACK 2/GSM850 4TX 2/Zoom Scan (5x5x7)/Cube 0: Measurement grid: dx=8mm, dy=8mm, dz=5mm

Reference Value = 18.14 V/m; Power Drift = -0.01 dB

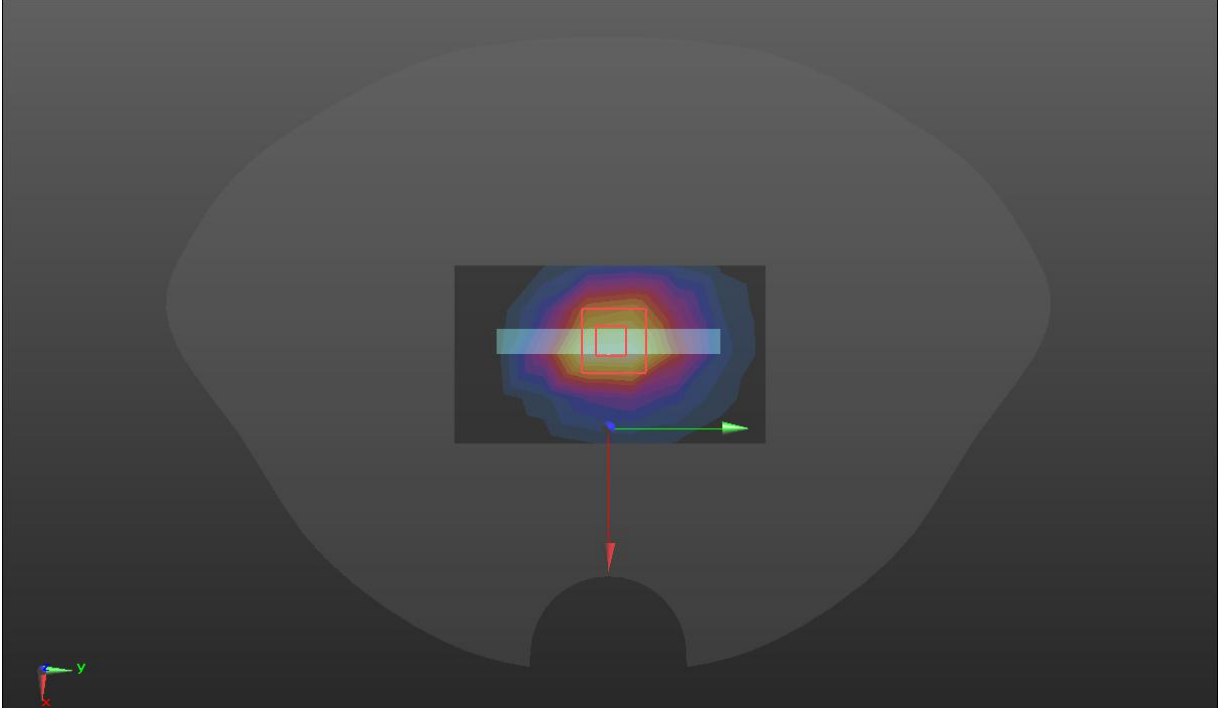
Peak SAR (extrapolated) = 1.85 W/kg

SAR(1 g) = 1.07 W/kg; SAR(10 g) = 0.644 W/kg

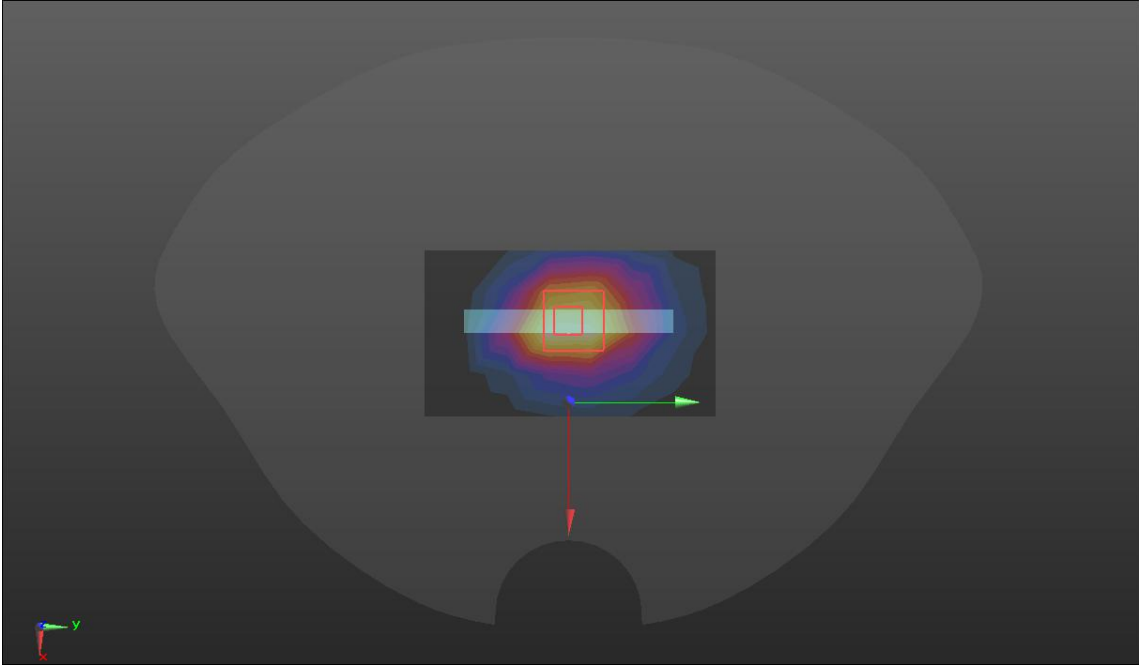
Maximum value of SAR (measured) = 1.28 W/kg



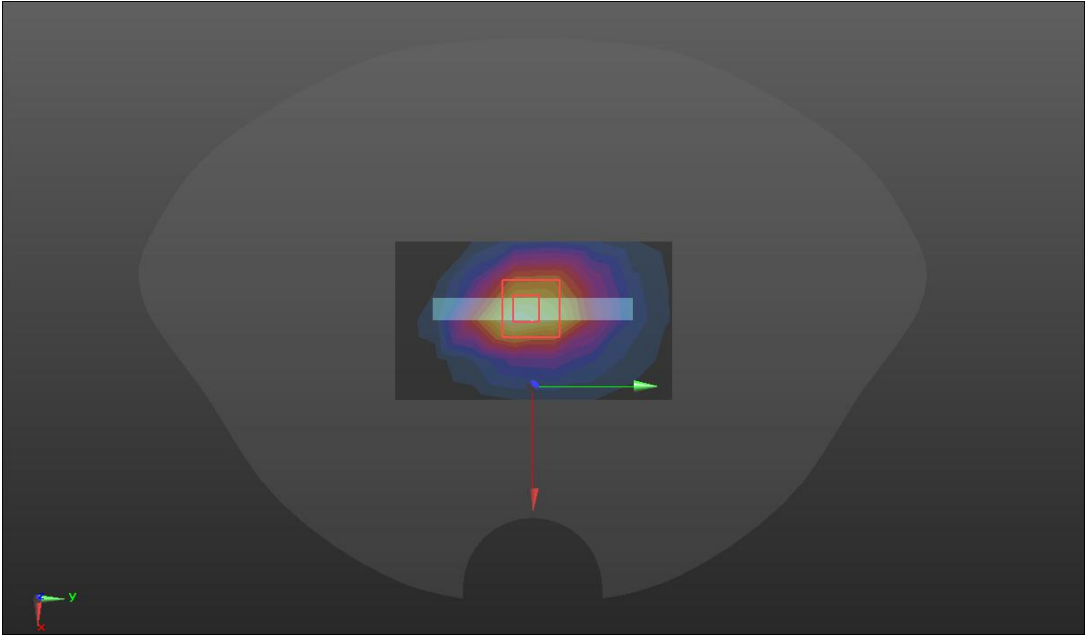
GSM 1900

Hotspot	Bottom (2021.12.21)
<p>Communication System: UID 0, Generic GSM (0); Frequency: 1880 MHz; Duty Cycle: 3:8 Medium parameters used (interpolated): $f = 1880$ MHz; $\sigma = 1.4$ S/m; $\epsilon_r = 40$; $\rho = 1000$ kg/m³ Phantom section: Flat Section</p> <p>DASY5 Configuration:</p> <ul style="list-style-type: none"> Probe: ES3DV3 - SN3127; ConvF(5.08, 5.08, 5.08); Calibrated: 2021/8/27; Sensor-Surface: 3mm (Mechanical Surface Detection) Electronics: DAE4 Sn546; Calibrated: 2021/8/25 Phantom: Twin-SAM 1660; Type: QD 000 P40 CD; Serial: 1660 Measurement SW: DASY52, Version 52.8 (8); SEMCAD X Version 14.6.10 (7373) <p>BOTTOM/GSM1900/Area Scan (8x5x1): Measurement grid: dx=15mm, dy=15mm Maximum value of SAR (measured) = 1.36 W/kg</p> <p>BOTTOM/GSM1900/Zoom Scan (5x5x7)/Cube 0: Measurement grid: dx=8mm, dy=8mm, dz=5mm Reference Value = 33.44 V/m; Power Drift = 0.10 dB Peak SAR (extrapolated) = 2.08 W/kg SAR(1 g) = 1.175 W/kg; SAR(10 g) = 0.635 W/kg Maximum value of SAR (measured) = 1.41 W/kg</p> 	

WCDMA BAND II

Hotspot	Bottom (2021.12.21)
<p>Communication System: UID 0, WCDMA BAND2 (0); Frequency: 1880 MHz; Duty Cycle: 1:1 Medium parameters used (interpolated): $f = 1880$ MHz; $\sigma = 1.4$ S/m; $\epsilon_r = 40$; $\rho = 1000$ kg/m³ Phantom section: Flat Section</p> <p>DASY5 Configuration:</p> <ul style="list-style-type: none"> Probe: ES3DV3 - SN3127; ConvF(5.08, 5.08, 5.08); Calibrated: 2021/8/27; Sensor-Surface: 3mm (Mechanical Surface Detection) Electronics: DAE4 Sn546; Calibrated: 2021/8/25 Phantom: Twin-SAM 1660; Type: QD 000 P40 CD; Serial: 1660 Measurement SW: DASY52, Version 52.8 (8); SEMCAD X Version 14.6.10 (7373) <p>BOTTOM/W2/Area Scan (8x5x1): Measurement grid: dx=15mm, dy=15mm Maximum value of SAR (measured) = 0.848 W/kg</p> <p>BOTTOM/W2/Zoom Scan (5x5x7)/Cube 0: Measurement grid: dx=8mm, dy=8mm, dz=5mm Reference Value = 26.32 V/m; Power Drift = 0.04 dB Peak SAR (extrapolated) = 1.31 W/kg SAR(1 g) = 0.798 W/kg; SAR(10 g) = 0.463 W/kg Maximum value of SAR (measured) = 0.971 W/kg</p> 	

WCDMA BAND IV

Hotspot	Bottom (2021.12.21)
<p>Communication System: UID 0, WCDMA BAND4 (0); Frequency: 1732.6 MHz; Duty Cycle: 1:1</p> <p>Medium parameters used (interpolated): $f = 1732.6$ MHz; $\sigma = 1.376$ S/m; $\epsilon_r = 40.07$; $\rho = 1000$ kg/m³</p> <p>Phantom section: Flat Section</p> <p>DASY5 Configuration:</p> <ul style="list-style-type: none"> Probe: ES3DV3 - SN3127; ConvF(5.08, 5.08, 5.08); Calibrated: 2021/8/27; Sensor-Surface: 3mm (Mechanical Surface Detection) Electronics: DAE4 Sn546; Calibrated: 2021/8/25 Phantom: Twin-SAM 1660; Type: QD 000 P40 CD; Serial: 1660 Measurement SW: DASY52, Version 52.8 (8); SEMCAD X Version 14.6.10 (7373) <p>BOTTOM/W4/Area Scan (8x5x1): Measurement grid: dx=15mm, dy=15mm Maximum value of SAR (measured) = 1.19 W/kg</p> <p>BOTTOM/W4/Zoom Scan (5x5x7)/Cube 0: Measurement grid: dx=8mm, dy=8mm, dz=5mm Reference Value = 30.46 V/m; Power Drift = 0.08 dB Peak SAR (extrapolated) = 1.71 W/kg SAR(1 g) = 1.07 W/kg; SAR(10 g) = 0.627 W/kg Maximum value of SAR (measured) = 1.29 W/kg</p> 	

WCDMA BAND V

Hotspot	Back(2021.12.17)
---------	------------------

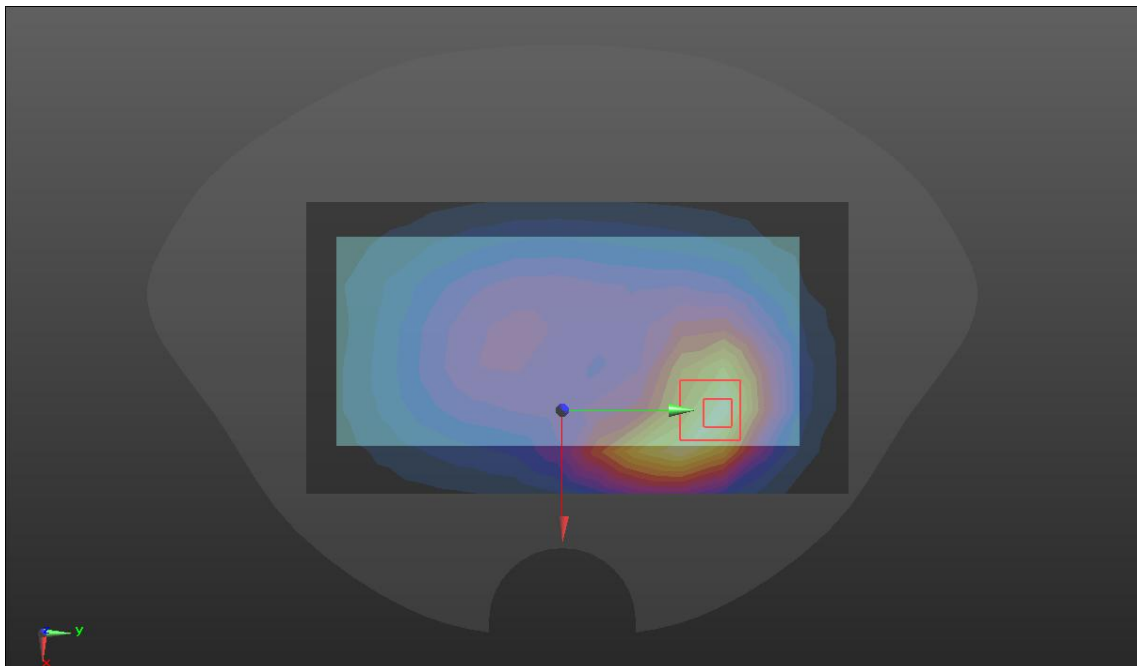
Communication System: UID 0, WCDMA BAND 5 (0); Frequency: 836.6 MHz; Duty Cycle: 1:1

Medium parameters used (interpolated): $f = 836.6$ MHz; $\sigma = 0.905$ S/m; $\epsilon_r = 41.528$; $\rho = 1000$ kg/m³

Phantom section: Flat Section

DASY5 Configuration:

- Probe: ES3DV3 - SN3127; ConvF(6.13, 6.13, 6.13); Calibrated: 2021/8/27;
 - Sensor-Surface: 3mm (Mechanical Surface Detection)
 - Electronics: DAE4 Sn546; Calibrated: 2021/8/25
 - Phantom: Twin-SAM 1660; Type: QD 000 P40 CD; Serial: 1660
 - Measurement SW: DASY52, Version 52.8 (8); SEMCAD X Version 14.6.10 (7373)
- BACK/W5/Area Scan (14x8x1):** Measurement grid: dx=15mm, dy=15mm
Maximum value of SAR (measured) = 0.486 W/kg
- BACK/W5/Zoom Scan (5x5x7)/Cube 0:** Measurement grid: dx=8mm, dy=8mm, dz=5mm
- Reference Value = 14.80 V/m; Power Drift = -0.05 dB
- Peak SAR (extrapolated) = 0.648 W/kg
- SAR(1 g) = 0.461 W/kg; SAR(10 g) = 0.270 W/kg**



LTE BAND 4

Hotspot	Bottom (2021.12.21)
---------	---------------------

Communication System: UID 0, LTE band 4 (0); Frequency: 1732.5 MHz; Duty Cycle: 1:1
Medium parameters used (interpolated): $f = 1732.5$ MHz; $\sigma = 1.375$ S/m; $\epsilon_r = 40.07$; $\rho = 1000$ kg/m³

Phantom section: Flat Section

DASY5 Configuration:

- Probe: ES3DV3 - SN3127; ConvF(5.08, 5.08, 5.08); Calibrated: 2021/8/27;
- Sensor-Surface: 3mm (Mechanical Surface Detection)
- Electronics: DAE4 Sn546; Calibrated: 2021/8/25
- Phantom: Twin-SAM 1660; Type: QD 000 P40 CD; Serial: 1660
- Measurement SW: DASY52, Version 52.8 (8); SEMCAD X Version 14.6.10 (7373)

BOTTOM/LTE B4/Area Scan (8x5x1): Measurement grid: dx=15mm, dy=15mm
Maximum value of SAR (measured) = 1.17 W/kg

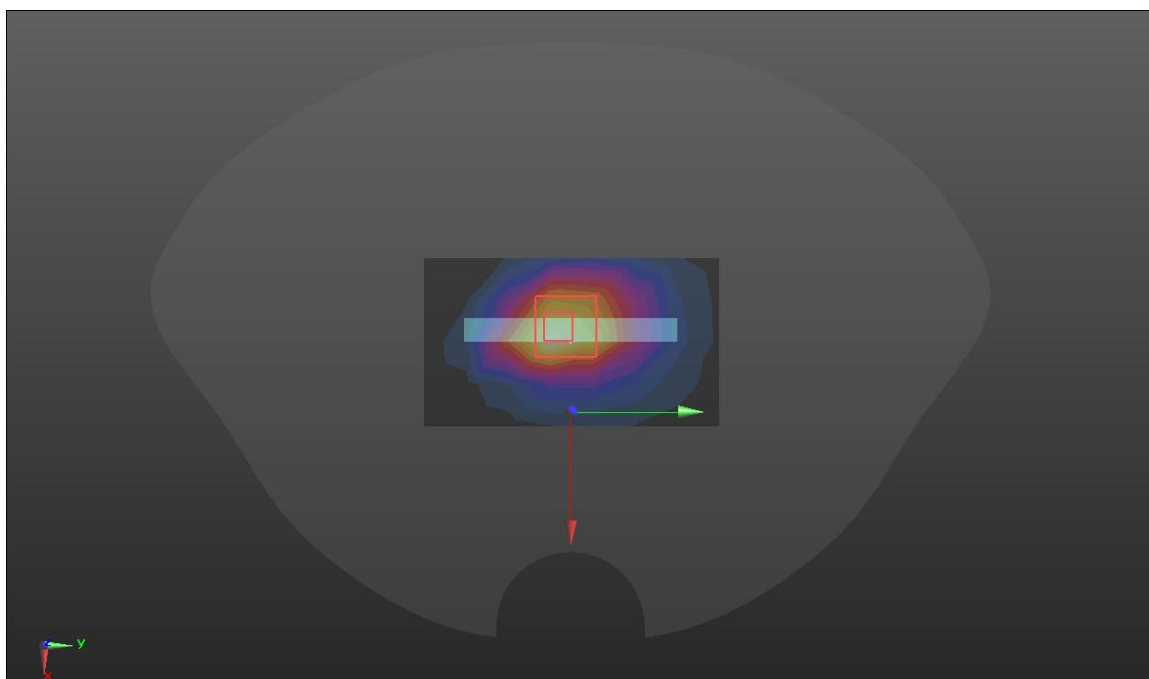
BOTTOM/LTE B4/Zoom Scan (5x5x7)/Cube 0: Measurement grid: dx=8mm, dy=8mm, dz=5mm

Reference Value = 29.92 V/m; Power Drift = 0.02 dB

Peak SAR (extrapolated) = 1.73 W/kg

SAR(1 g) = 1.08 W/kg; SAR(10 g) = 0.633 W/kg

Maximum value of SAR (measured) = 1.30 W/kg



LTE BAND 5

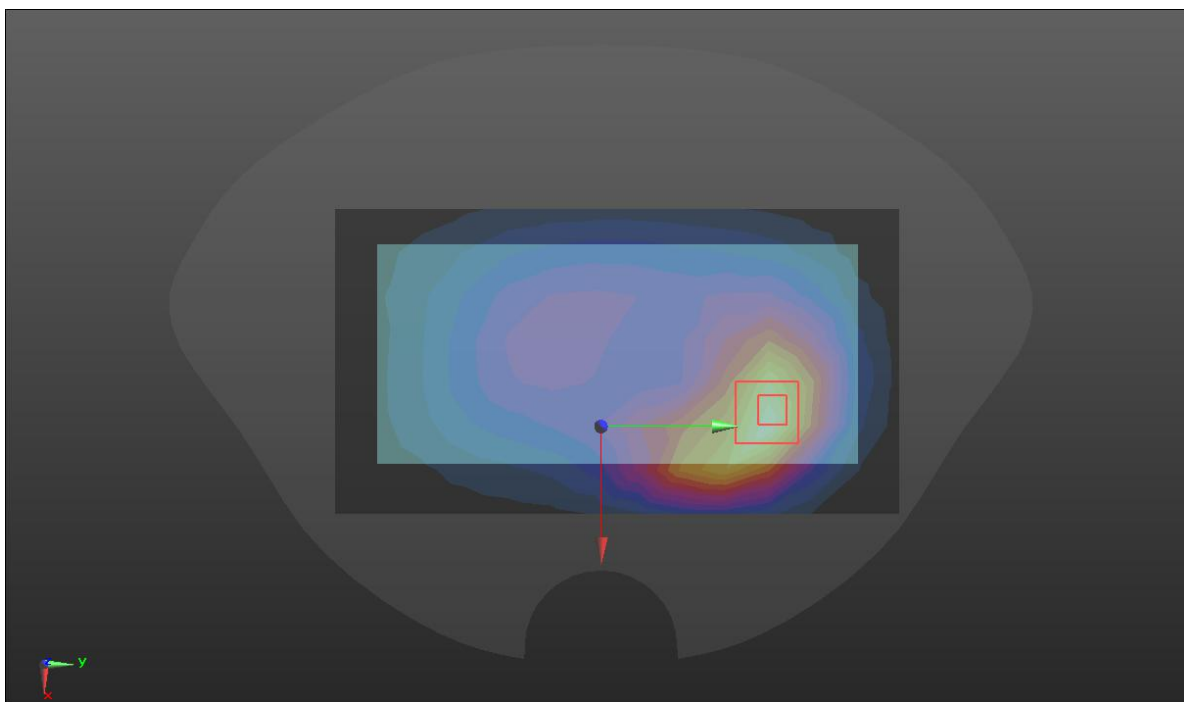
Hotspot	Back(2021.12.17)
----------------	-------------------------

Communication System: UID 0, LTE Band 5 (0); Frequency: 836.5 MHz; Duty Cycle: 1:1
Medium parameters used (interpolated): $f = 836.5$ MHz; $\sigma = 0.905$ S/m; $\epsilon_r = 41.528$; $\rho = 1000$ kg/m³

Phantom section: Flat Section

DASY5 Configuration:

- Probe: ES3DV3 - SN3127; ConvF(6.13, 6.13, 6.13); Calibrated: 2021/8/27;
 - Sensor-Surface: 3mm (Mechanical Surface Detection)
 - Electronics: DAE4 Sn546; Calibrated: 2021/8/25
 - Phantom: Twin-SAM 1660; Type: QD 000 P40 CD; Serial: 1660
 - Measurement SW: DASY52, Version 52.8 (8); SEMCAD X Version 14.6.10 (7373)
- BACK/LTE B5/Area Scan (14x8x1):** Measurement grid: dx=15mm, dy=15mm
Maximum value of SAR (measured) = 0.555 W/kg
- BACK/LTE B5/Zoom Scan (5x5x7)/Cube 0:** Measurement grid: dx=8mm, dy=8mm, dz=5mm
Reference Value = 14.78 V/m; Power Drift = -0.17 dB
Peak SAR (extrapolated) = 0.731 W/kg
SAR(1 g) = 0.476 W/kg; SAR(10 g) = 0.293 W/kg
Maximum value of SAR (measured) = 0.523 W/kg



LTE BAND 7

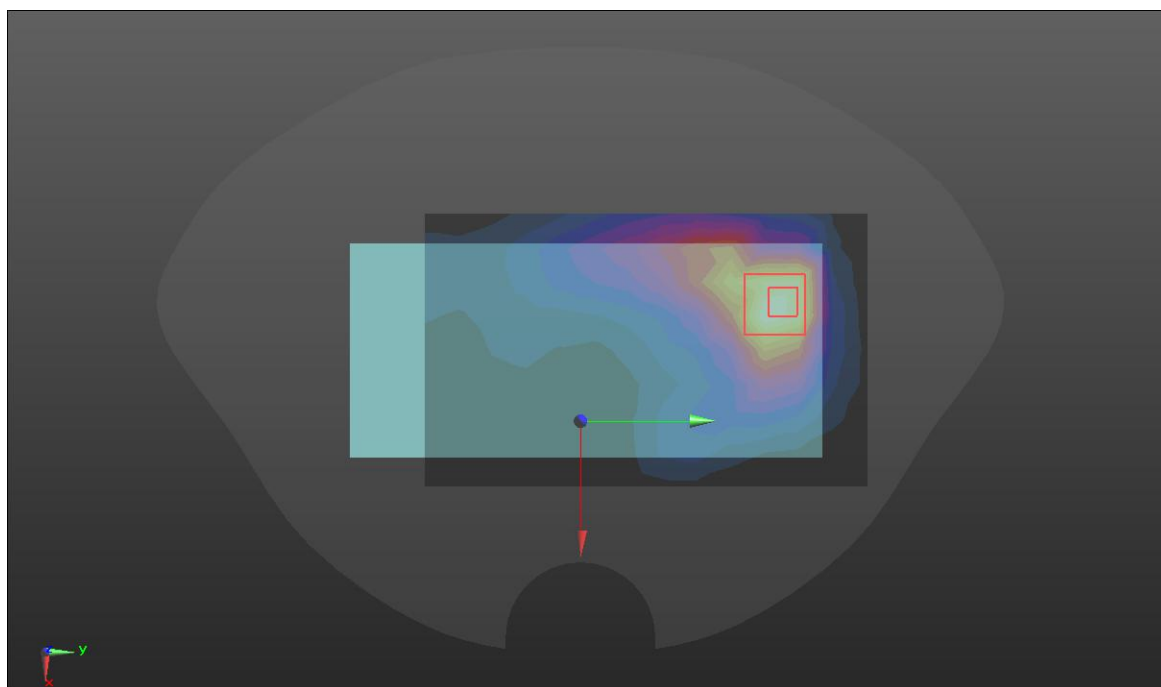
Hotspot	Back(2021.12.24)
----------------	-------------------------

Communication System: UID 0, LTE Band 7 (0); Frequency: 2535 MHz; Duty Cycle: 1:1
Medium parameters used (interpolated): $f = 2535$ MHz; $\sigma = 1.888$ S/m; $\epsilon_r = 39.084$; $\rho = 1000$ kg/m³

Phantom section: Flat Section

DASY5 Configuration:

- Probe: ES3DV3 - SN3127; ConvF(4.5, 4.5, 4.5); Calibrated: 2021/8/27;
- Sensor-Surface: 3mm (Mechanical Surface Detection)
- Electronics: DAE4 Sn546; Calibrated: 2021/8/25
- Phantom: Twin-SAM 1660; Type: QD 000 P40 CD; Serial: 1660
- Measurement SW: DASY52, Version 52.8 (8); SEMCAD X Version 14.6.10 (7373)
BACK/LTE B7/Area Scan (14x9x1): Measurement grid: dx=12mm, dy=12mm
 Maximum value of SAR (measured) = 0.944 W/kg
BACK/LTE B7/Zoom Scan (5x5x7)/Cube 0: Measurement grid: dx=8mm, dy=8mm, dz=5mm
 Reference Value = 5.240 V/m; Power Drift = 0.07 dB
 Peak SAR (extrapolated) = 1.80 W/kg
SAR(1 g) = 0.869 W/kg; SAR(10 g) = 0.440 W/kg
 Maximum value of SAR (measured) = 1.13 W/kg



LTE BAND 13

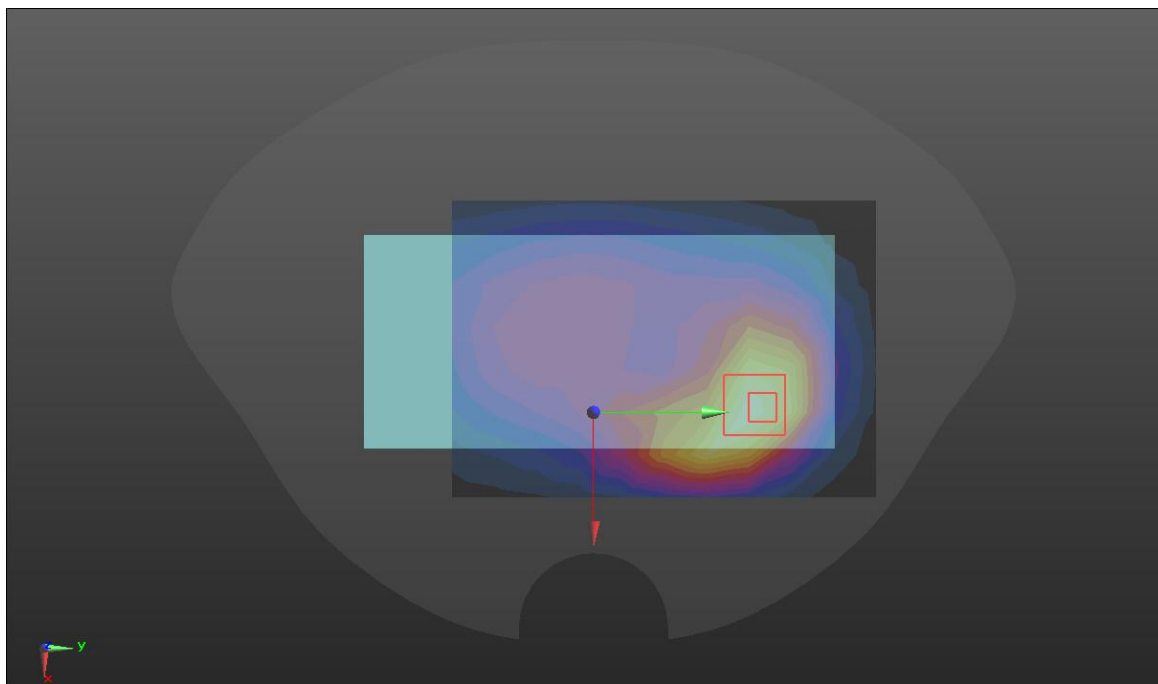
Hotspot	Back(2021.12.16)
----------------	-------------------------

Communication System: UID 0, LTE band 13 (0); Frequency: 782 MHz; Duty Cycle: 1:1
Medium parameters used (interpolated): $f = 782$ MHz; $\sigma = 0.893$ S/m; $\epsilon_r = 41.712$; $\rho = 1000$ kg/m³

Phantom section: Flat Section

DASY5 Configuration:

- Probe: ES3DV3 - SN3127; ConvF(6.35, 6.35, 6.35); Calibrated: 2021/8/27;
- Sensor-Surface: 3mm (Mechanical Surface Detection)
- Electronics: DAE4 Sn546; Calibrated: 2021/8/25
- Phantom: Twin-SAM 1660; Type: QD 000 P40 CD; Serial: 1660
- Measurement SW: DASY52, Version 52.8 (8); SEMCAD X Version 14.6.10 (7373)
BACK/LTE B13 2 2/Area Scan (11x8x1): Measurement grid: dx=15mm, dy=15mm
 Maximum value of SAR (measured) = 0.366 W/kg
BACK/LTE B13 2 2/Zoom Scan (5x5x7)/Cube 0: Measurement grid: dx=8mm, dy=8mm, dz=5mm
 Reference Value = 14.11 V/m; Power Drift = -0.08 dB
 Peak SAR (extrapolated) = 0.530 W/kg
SAR(1 g) = 0.362 W/kg; SAR(10 g) = 0.211 W/kg
 Maximum value of SAR (measured) = 0.386 W/kg



LTE BAND 28

Hotspot	Right(2021.12.16)
----------------	--------------------------

Communication System: UID 0, LTE band28 (0); Frequency: 723 MHz; Duty Cycle: 1:1
Medium parameters used (interpolated): $f = 723$ MHz; $\sigma = 0.888$ S/m; $\epsilon_r = 42.037$; $\rho = 1000$ kg/m³

Phantom section: Flat Section

DASY5 Configuration:

- Probe: ES3DV3 - SN3127; ConvF(6.35, 6.35, 6.35); Calibrated: 2021/8/27;
- Sensor-Surface: 3mm (Mechanical Surface Detection)
- Electronics: DAE4 Sn546; Calibrated: 2021/8/25
- Phantom: Twin-SAM 1660; Type: QD 000 P40 CD; Serial: 1660
- Measurement SW: DASY52, Version 52.8 (8); SEMCAD X Version 14.6.10 (7373)

RIGHT/LTE B28/Area Scan (14x5x1): Measurement grid: dx=15mm, dy=15mm

Maximum value of SAR (measured) = 0.349 W/kg

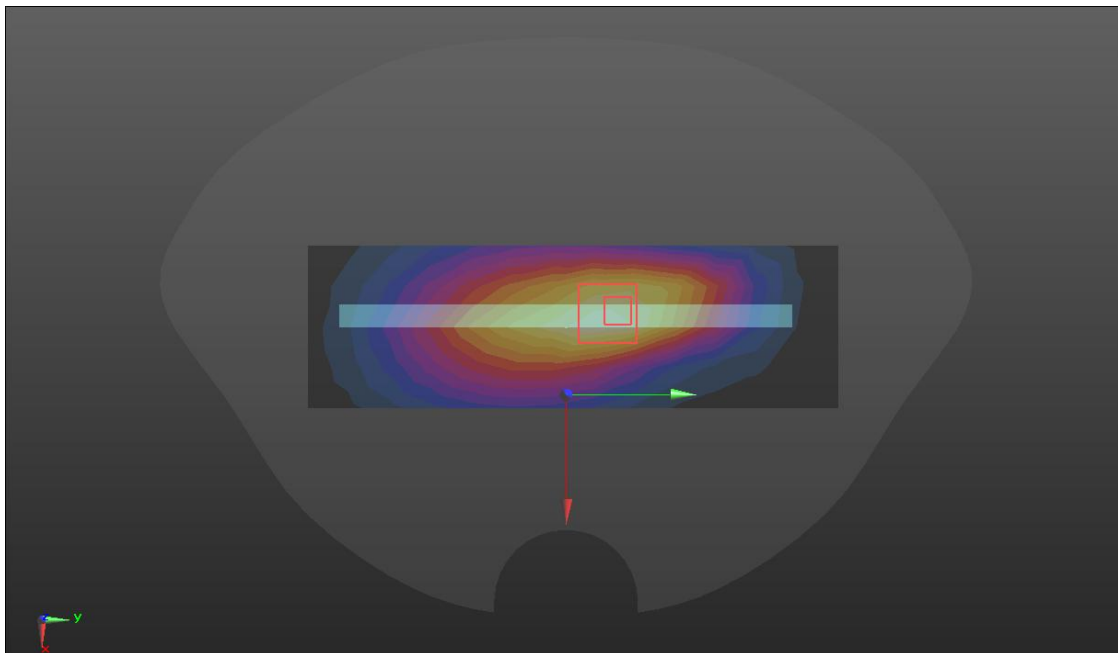
RIGHT/LTE B28/Zoom Scan (5x5x7)/Cube 0: Measurement grid: dx=8mm, dy=8mm, dz=5mm

Reference Value = 19.66 V/m; Power Drift = -0.09 dB

Peak SAR (extrapolated) = 0.508 W/kg

SAR(1 g) = 0.327 W/kg; SAR(10 g) = 0.213 W/kg

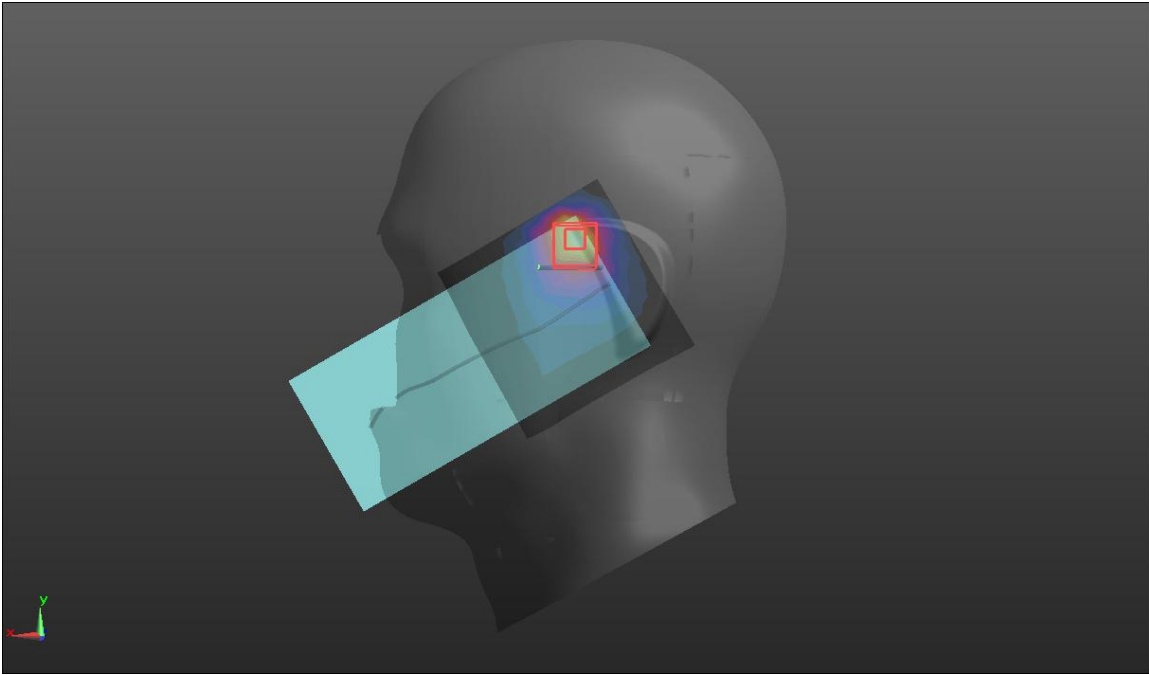
Maximum value of SAR (measured) = 0.389 W/kg



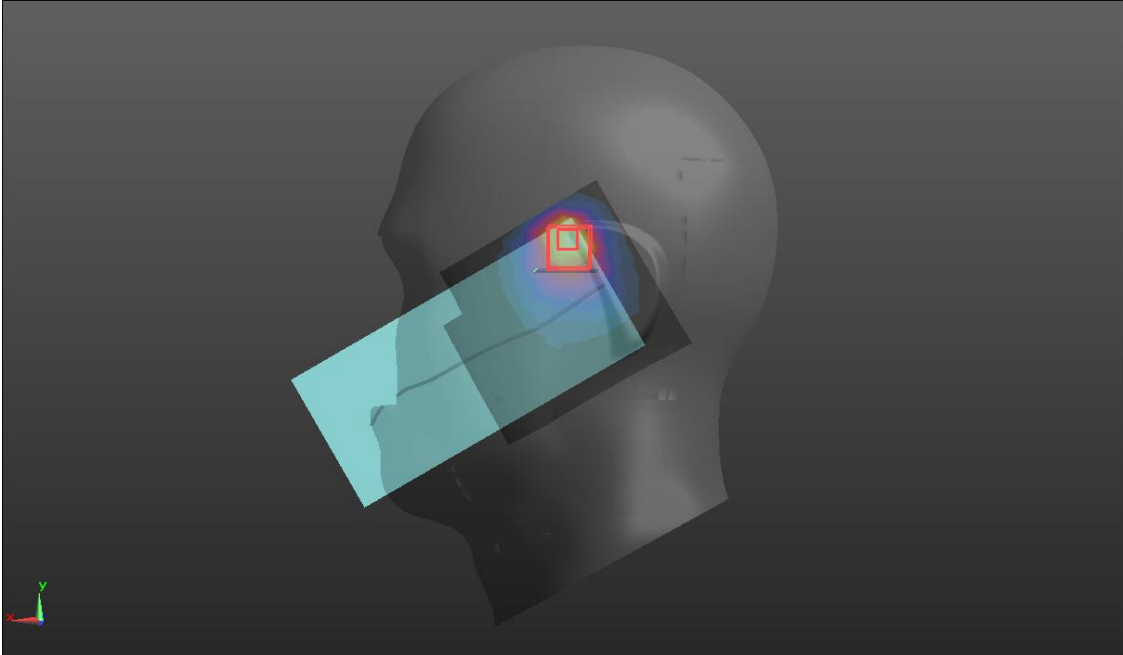
LTE BAND 66

Hotspot	Bottom (2021.12.17)
<p>Communication System: UID 0, LTE band 66 (0); Frequency: 1745 MHz; Duty Cycle: 0.633:1 Medium parameters used (interpolated): $f = 1745$ MHz; $\sigma = 1.383$ S/m; $\epsilon_r = 40.047$; $\rho = 1000$ kg/m³ Phantom section: Flat Section</p> <p>DASY5 Configuration:</p> <ul style="list-style-type: none"> Probe: ES3DV3 - SN3127; ConvF(5.08, 5.08, 5.08); Calibrated: 2021/8/27; Sensor-Surface: 3mm (Mechanical Surface Detection) Electronics: DAE4 Sn546; Calibrated: 2021/8/25 Phantom: Twin-SAM 1660; Type: QD 000 P40 CD; Serial: 1660 Measurement SW: DASY52, Version 52.8 (8); SEMCAD X Version 14.6.10 (7373) <p>BOTTOM/LTE B66/Area Scan (8x5x1): Measurement grid: dx=15mm, dy=15mm Maximum value of SAR (measured) = 1.09 W/kg</p> <p>BOTTOM/LTE B66/Zoom Scan (5x5x7)/Cube 0: Measurement grid: dx=8mm, dy=8mm, dz=5mm Reference Value = 28.62 V/m; Power Drift = 0.01 dB Peak SAR (extrapolated) = 1.61 W/kg SAR(1 g) = 1.01 W/kg; SAR(10 g) = 0.589 W/kg Maximum value of SAR (measured) = 1.21 W/kg</p> 	

WIFI 2.4GHz

Head	Left cheek (2021.12.23)
<p>Communication System: UID 0, WIFI 2.4GHz (0); Frequency: 2437 MHz; Duty Cycle: 0.9985:1</p> <p>Medium parameters used (interpolated): $f = 2437$ MHz; $\sigma = 1.788$ S/m; $\epsilon_r = 39.219$; $\rho = 1000$ kg/m³</p> <p>Phantom section: Left Section</p> <p>DASY5 Configuration:</p> <ul style="list-style-type: none"> • Probe: ES3DV3 - SN3127; ConvF(4.5, 4.5, 4.5); Calibrated: 2021/8/27; • Sensor-Surface: 3mm (Mechanical Surface Detection) • Electronics: DAE4 Sn546; Calibrated: 2021/8/25 • Phantom: Twin-SAM 1660; Type: QD 000 P40 CD; Serial: 1660 • Measurement SW: DASY52, Version 52.8 (8); SEMCAD X Version 14.6.10 (7373) <p>LC/WIFI2.4 TX15/Area Scan (9x9x1): Measurement grid: dx=12mm, dy=12mm Maximum value of SAR (measured) = 1.22 W/kg</p> <p>LC/WIFI2.4 TX15/Zoom Scan (5x5x7)/Cube 0: Measurement grid: dx=8mm, dy=8mm, dz=5mm Reference Value = 11.35 V/m; Power Drift = 0.06 dB Peak SAR (extrapolated) = 1.11 W/kg SAR(1 g) = 0.599W/kg; SAR(10 g) = 0.296 W/kg Maximum value of SAR (measured) = 0.762 W/kg</p> 	

Bluetooth

Head	Left cheek (2021.12.23)
<p>Communication System: UID 0, BT (0); Frequency: 2441 MHz; Duty Cycle: 0.792:1 Medium parameters used (interpolated): $f = 2441 \text{ MHz}$; $\sigma = 1.792 \text{ S/m}$; $\epsilon_r = 39.213$; $\rho = 1000 \text{ kg/m}^3$ Phantom section: Left Section</p> <p>DASY5 Configuration:</p> <ul style="list-style-type: none"> Probe: ES3DV3 - SN3127; ConvF(4.5, 4.5, 4.5); Calibrated: 2021/8/27; Sensor-Surface: 3mm (Mechanical Surface Detection) Electronics: DAE4 Sn546; Calibrated: 2021/8/25 Phantom: Twin-SAM 1660; Type: QD 000 P40 CD; Serial: 1660 Measurement SW: DASY52, Version 52.8 (8); SEMCAD X Version 14.6.10 (7373) <p>LC/BT/Area Scan (10x9x1): Measurement grid: $dx=12\text{mm}$, $dy=12\text{mm}$ Maximum value of SAR (measured) = 0.0650 W/kg</p> <p>LC/BT/Zoom Scan (5x5x7)/Cube 0: Measurement grid: $dx=8\text{mm}$, $dy=8\text{mm}$, $dz=5\text{mm}$ Reference Value = 3.405 V/m; Power Drift = 0.08 dB Peak SAR (extrapolated) = 0.123 W/kg SAR(1 g) = 0.058 W/kg; SAR(10 g) = 0.028 W/kg Maximum value of SAR (measured) = 0.0757 W/kg</p> 	

Note: All the modulated signal with different PAR (refers to RF WWAN report) already take into account, but not mentioned in this inherent log file template.