







ZTE

Warning: The battery is not removable.
Removal may cause fire or explosion.

锂离子电池/聚合物电池/LI-ION POLYMER BATTERY
额定容量/RATED CAPACITY 3900mAh(15.02Wh)
典型容量/TYPICAL CAPACITY 4000mAh(15.40Wh)
标称电压/NOMINAL VOLTAGE:3.85V
充电限制电压/LIMITED CHARGE VOLTAGE:4.43V
型号/MODEL:L3939T44P8h896443
执行标准/STANDARD:GB 31241
中兴通讯股份有限公司/ZTE CORPORATION
中国制造/MADE IN CHINA
11CP5/64/87



Li-ion 00

P000154B7G0004696

2021-07-16



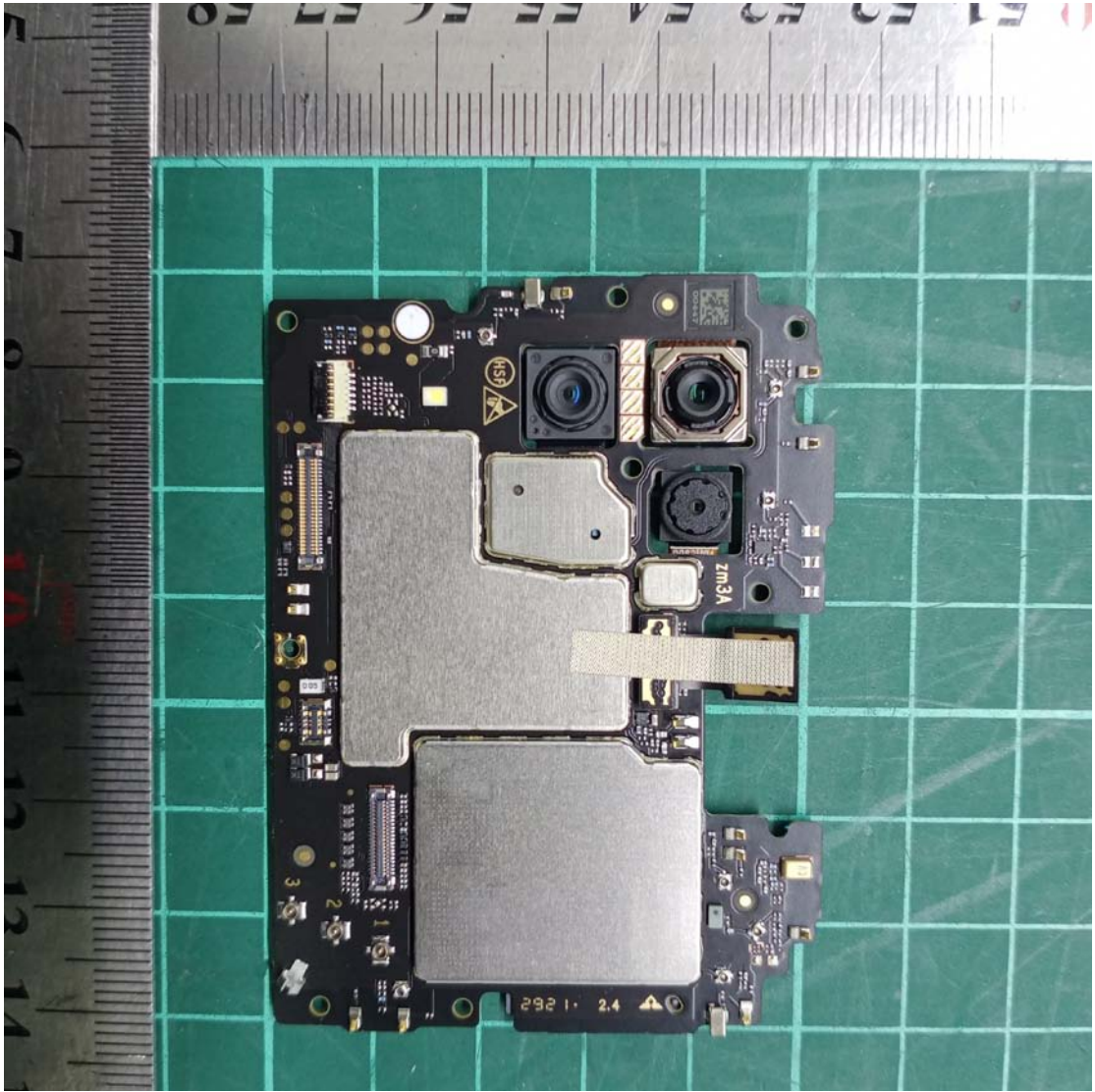
禁止拆解、撞击、挤压或投入火中
若出现严重鼓胀，请勿继续使用
请使用原配电池和充电器
请勿置于高温环境中(140°F / 60°C)
电池浸水后禁止使用
禁止金属物体接触或短路电池端子

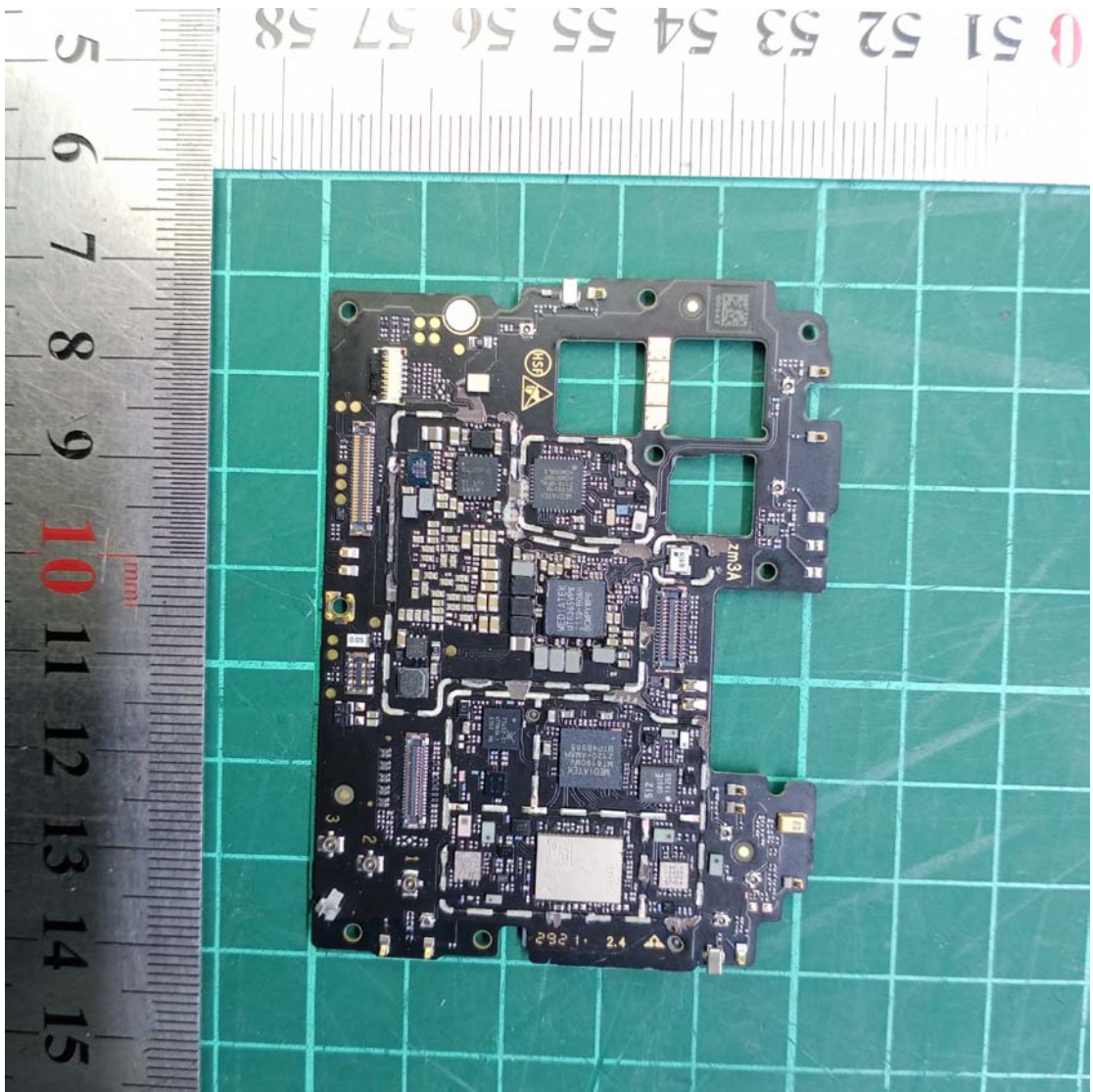
ZTEジャパン株式会社

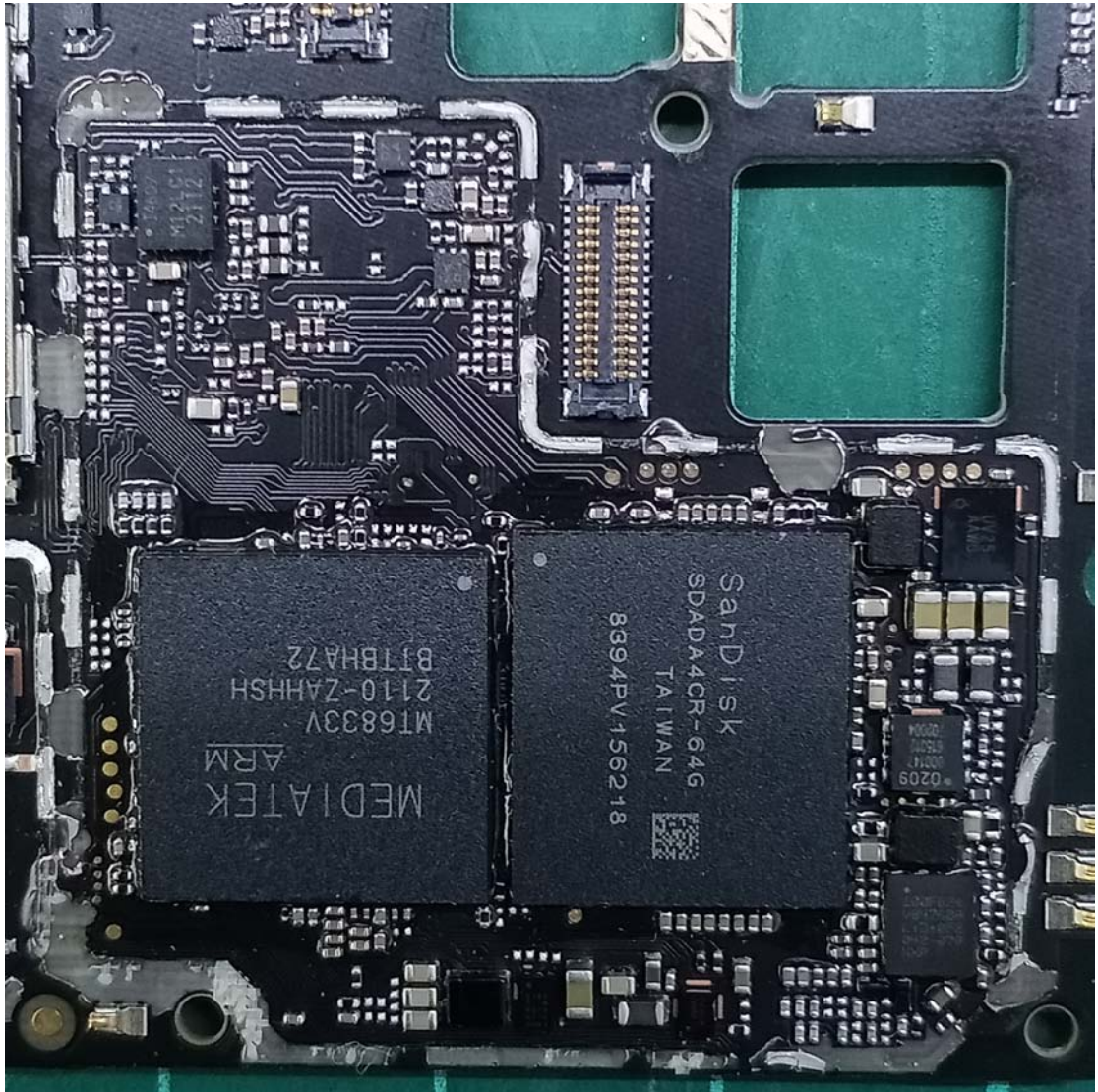


Do not disassemble, impact, crush, heat or burn
Do not use batteries after severe swelling
Use only original batteries and chargers
Do not expose to high temperature(140°F / 60°C)
Do not use batteries after water immersion
Do not allow metal objects to contact or short circuit
the battery terminals





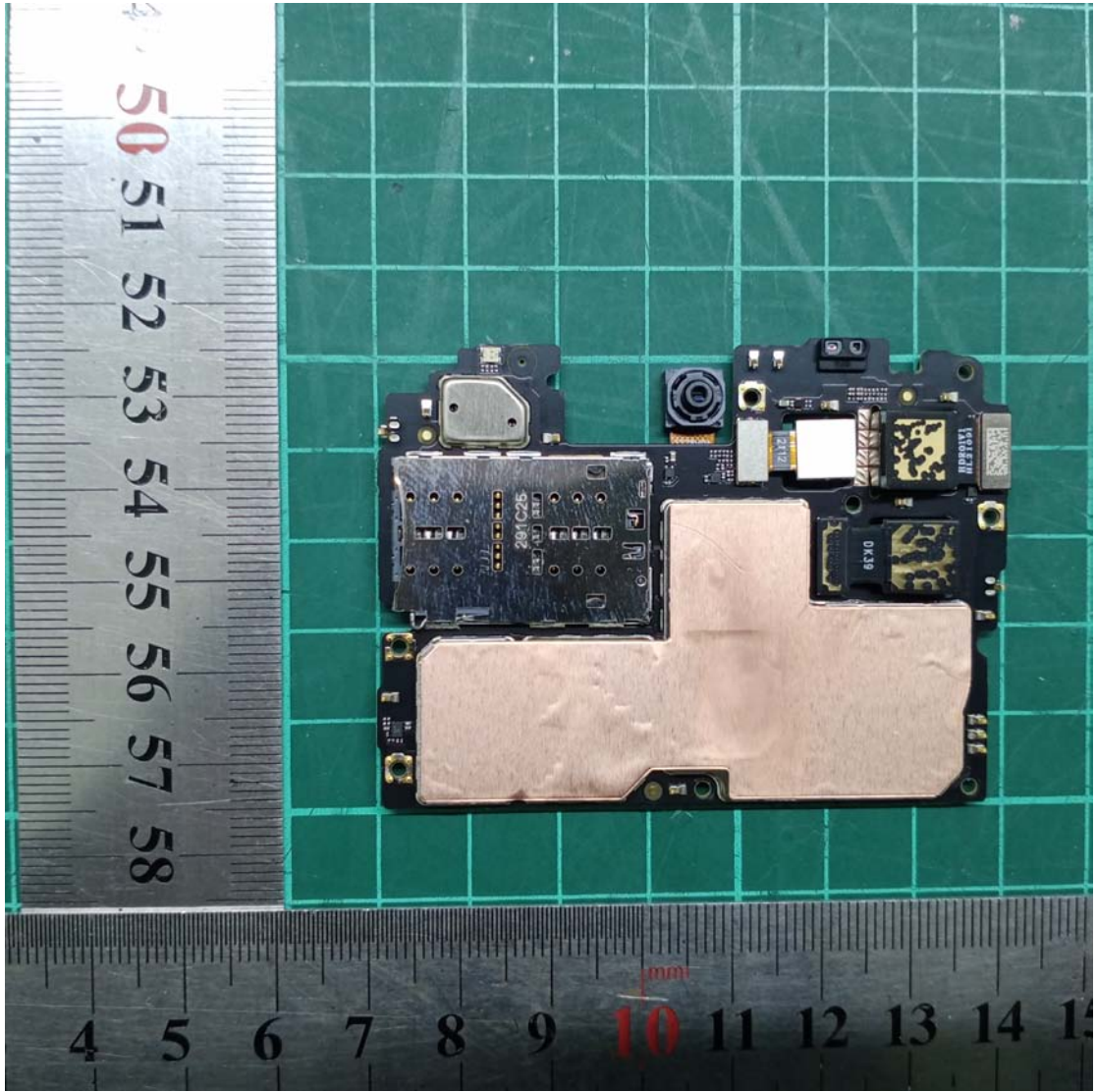


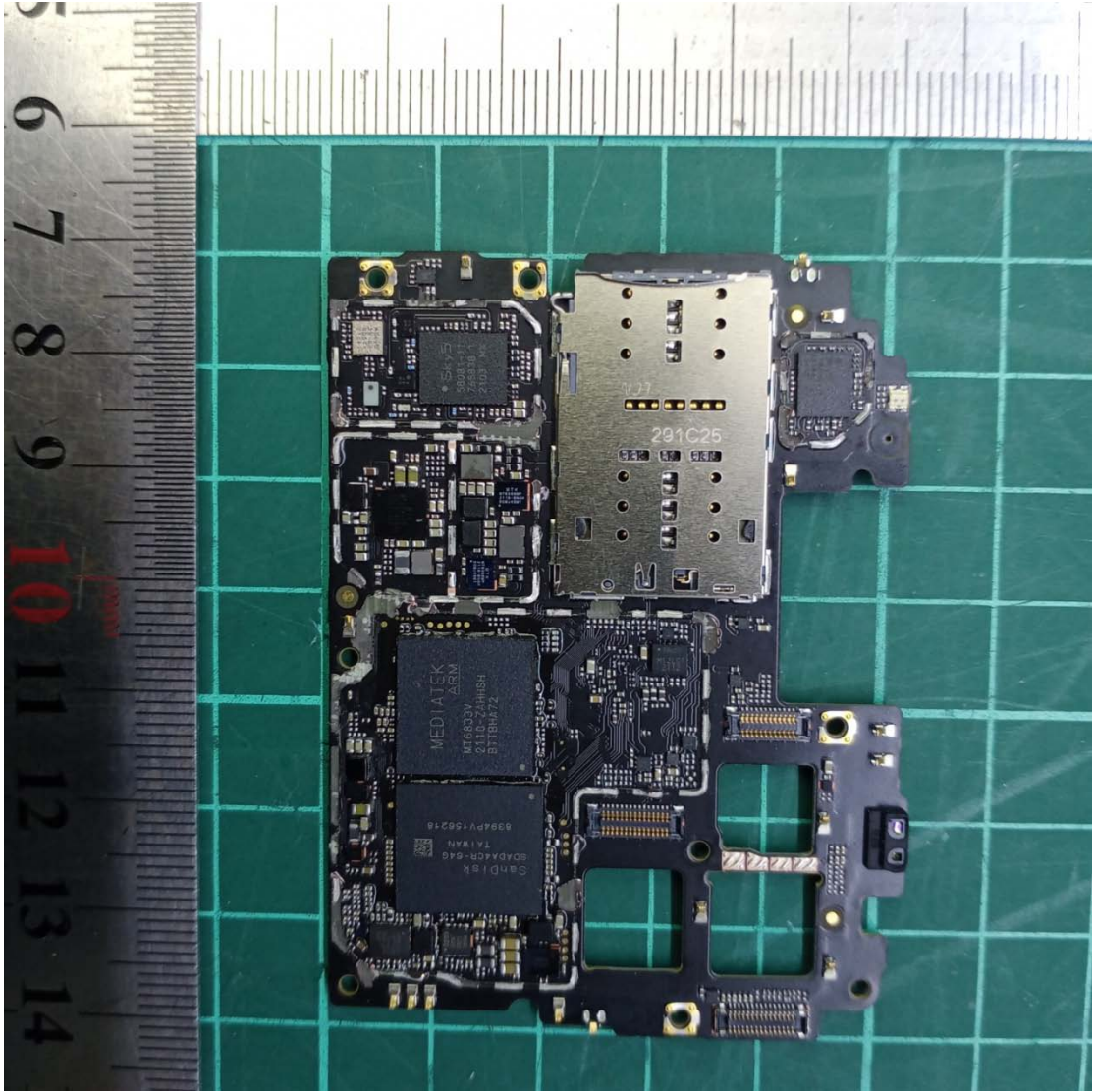


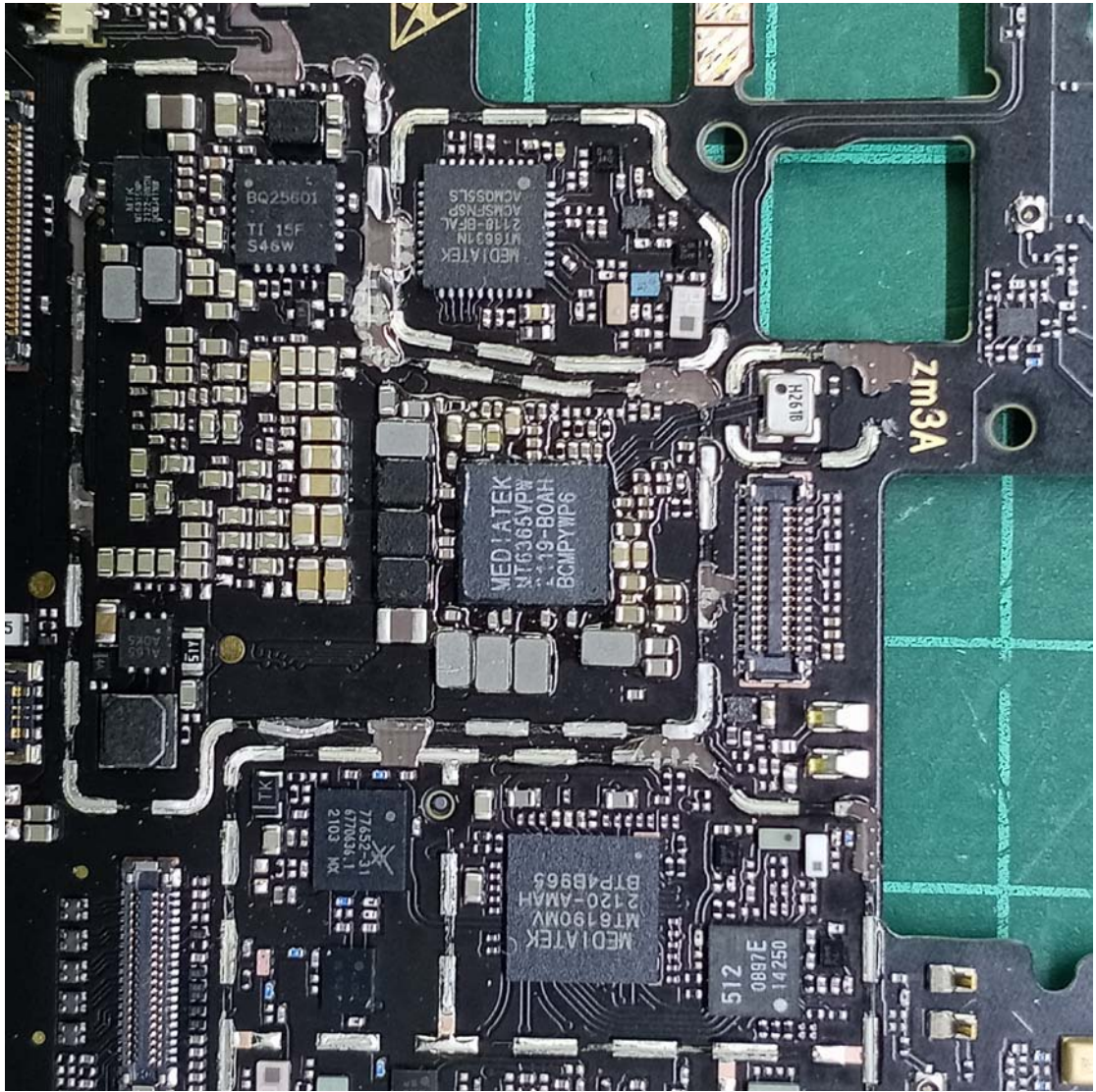
MEDIATEK
ARM
M16833V
2110-ZAHSH
B1TBHA72

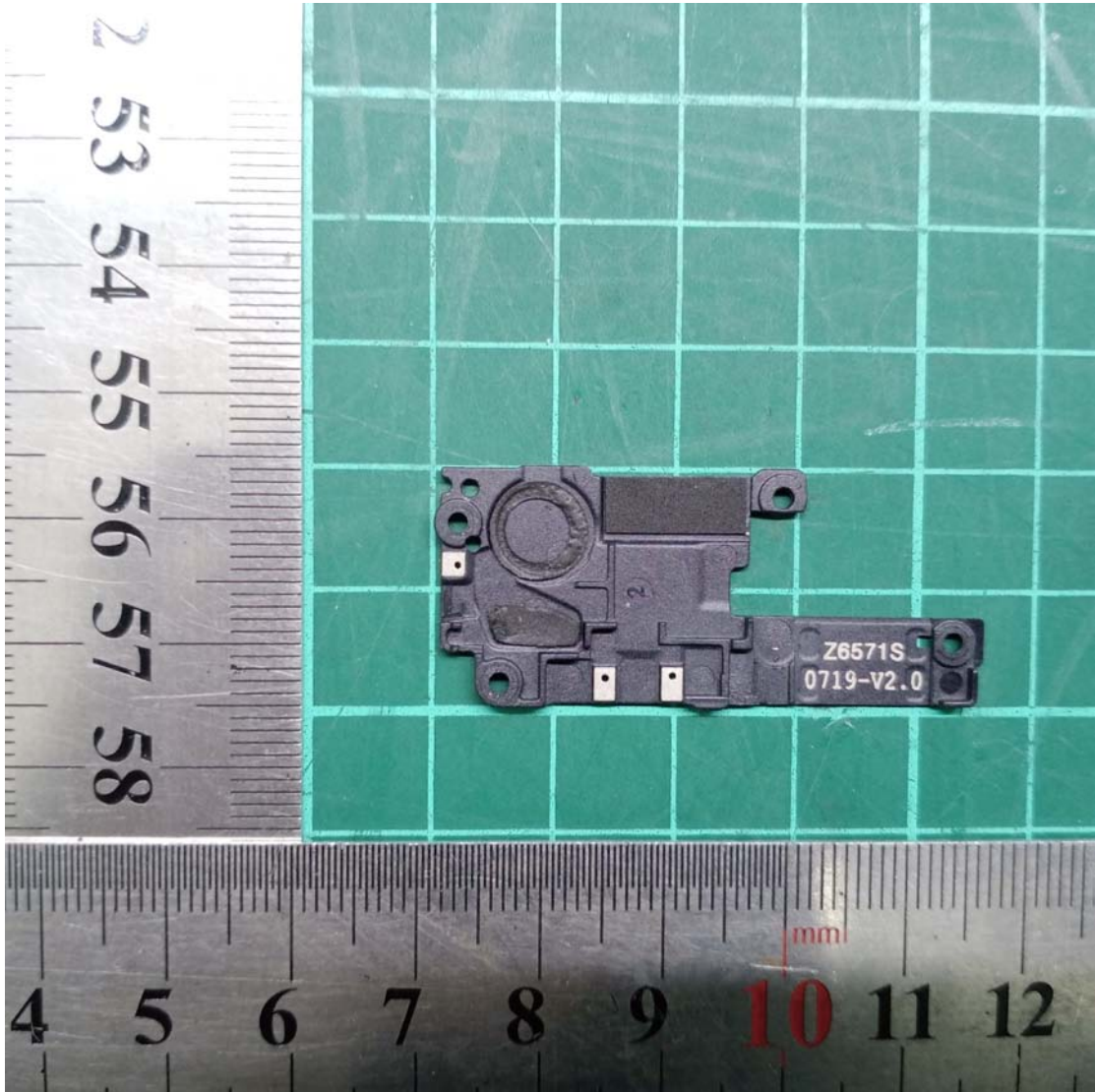
Sandisk
SDADA4CR-64G
TAIWAN
8394PV156218

0209









2 53 54 55 56 57 58

4 5 6 7 8 9 10 11 12

mm

Z6571S
0719-V2.0

