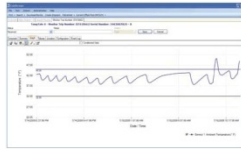


**Millions Depend on the Integrity of Your Product.  
Sensitech's Mission is to Ensure that Integrity.**

## The Tools That Turn Information Into Power



TempTale® Manager Software



Data Management Services



RF Monitoring



TempTale®4 Probe Monitor



TempTale®4 Monitor



TagAlert™ Monitor

For more information, contact our client services group at 800-843-8367.



© 2010. All Rights Reserved.

TempTale is a registered trademark and TagAlert is a trademark of Sensitech, Inc.  
800 Cummings Center, Beverly, MA 01915

T11012177 Rev. B.

# **TempTale® RF Monitor Instructions For Use**

## FCC ID SRMT11012177

*This device complies with Part 15 of the FCC Rules. Operation is subject to the following two conditions: (1) this device may not cause harmful interference, and (2) this device must accept any interference received, including interference that may cause undesired operation.*

*Changes or modifications not expressly approved by Sensitech could void the user's authority to operate the equipment.*

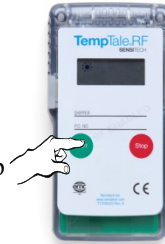


Sensitech Inc. • 800 Cummings Center • Beverly, MA 01915  
(978) 927-7033 • Fax (978) 921-2112 [www.sensitech.com](http://www.sensitech.com)

All TempTale® RF Monitors can be programmed with a custom Start-up delay, measurement interval and alarm settings which have been pre-determined by the customer.

### Starting a TempTale RF Monitor

- Press and release the Start button.
- The “Sunshine” icon ☀ appears in the upper left corner of the display.
- The TempTale RF will begin to record data after the start-up delay has passed.



### To mark an important event (“Date Stamp”)

- TempTale RF monitors provide an option to “Date Stamp” or mark an important event at any time during the monitoring cycle that will be visible when viewing the data. The mark is displayed as an arrow when viewing the graph and shown in italics when viewing the tabular data.
- To mark a graph while the monitor is recording, press and release the “Start” button.
- The “arrow” icon will appear temporarily in the lower left corner and the temperature history will appear on the display. Data appears as follows:

1. Average temperature of Primary (Ambient) Sensor Readings
2. Highest temperature recorded at Primary Sensor
3. Total time above high temperature limit of Primary Sensor
4. Lowest temperature recorded at Primary Sensor
5. Total time below low temperature limit of Primary Sensor
6. Highest RH value recorded at Secondary (RH) Sensor
7. Lowest RH value recorded at Secondary (RH) Sensor

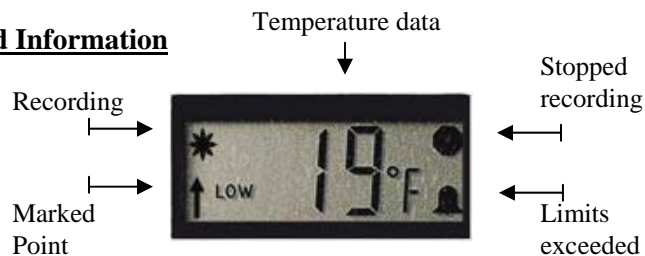
### Alarm

When the TempTale RF is exposed to a temperature outside a pre-programmed limit and time threshold, an “Alarm bell” 🔔 will appear in the lower right corner of the LCD display.

### Stopping a TempTale RF Monitor

Press and hold (1 to 3 seconds) the Stop button until the “Stop sign” 🛑 icon appears in the upper right corner of the LCD display.

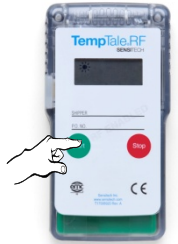
#### Displayed Information



Los monitores de TempTale® RF están programado con uno tiempo de demora, intervalo y limites de temperatura y tiempo que fueron requerido por el cliente.

### Iniciar el TempTale RF

- Presione y libere el botón de inicio “Start”.
- El icon del “Sol” ☀ aparecerá a la izquierda en la parte superior de la pantalla.
- El TempTale RF grabará después del tiempo de demora.



### Para marcar un evento importante (Estampa de fecha)

- Los TempTale RF monitores tienen la opción de marcar un evento importante que ocurra durante el envío. Se puede ver esta marca cuando se baja la información. La marca aparecerá como una flecha en el gráfico y en italico en el tabular.
- Para marcar el evento durante el envío, presione y libere el botón de inicio “Start”.
- Una flecha aparecerá en la pantalla y la información de temperatura aparecerá en el siguiente orden:

1. Temperatura media de las lecturas (ambiente) primarias del sensor
2. La temperatura más alta registrada en el sensor primario
3. Tiempo total sobre límite de alta temperatura del sensor primario
4. La temperatura más baja registrada en el sensor primario
5. Tiempo total debajo del límite de la baja temperatura del sensor primario
6. El valor más alto de la RH registrado en el sensor secundario (RH)
7. El valor más bajo de la RH registrado en el sensor secundario (RH)

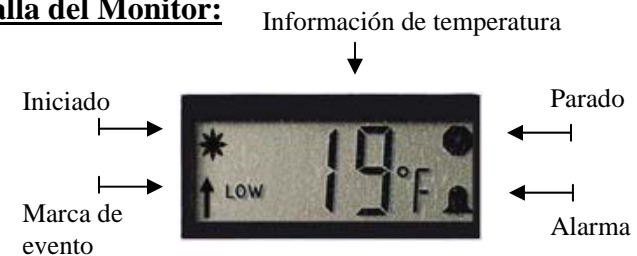
### Alarma

Cuando el TempTale RF está fuera del límite bajo o alto del tiempo programado, un icon de alarma 🔔 aparecerá a la derecha en la parte baja de la pantalla.

### Parar el TempTale RF

Presione y libere (1 a 3 segundos) el botón de parar “Stop” hasta que el icon de “Stop” 🛑 aparezca a la derecha en la parte superior de la pantalla.

#### Pantalla del Monitor:



## RADIO AND TELEVISION INTERFERENCE

NOTE: This equipment has been tested and found to comply with the limits for a Class A digital device, pursuant to Part 15 of the FCC rules. These limits are designed to provide reasonable protection against harmful interference when the equipment is operated in a commercial environment. This equipment generates, uses and can radiate radio frequency energy and, if not installed and used in accordance with the instruction manual, may cause harmful interference to radio communications. Operation of this equipment in a residential area is likely to cause harmful interference in which case the user will be required to correct the interference at his own expense.