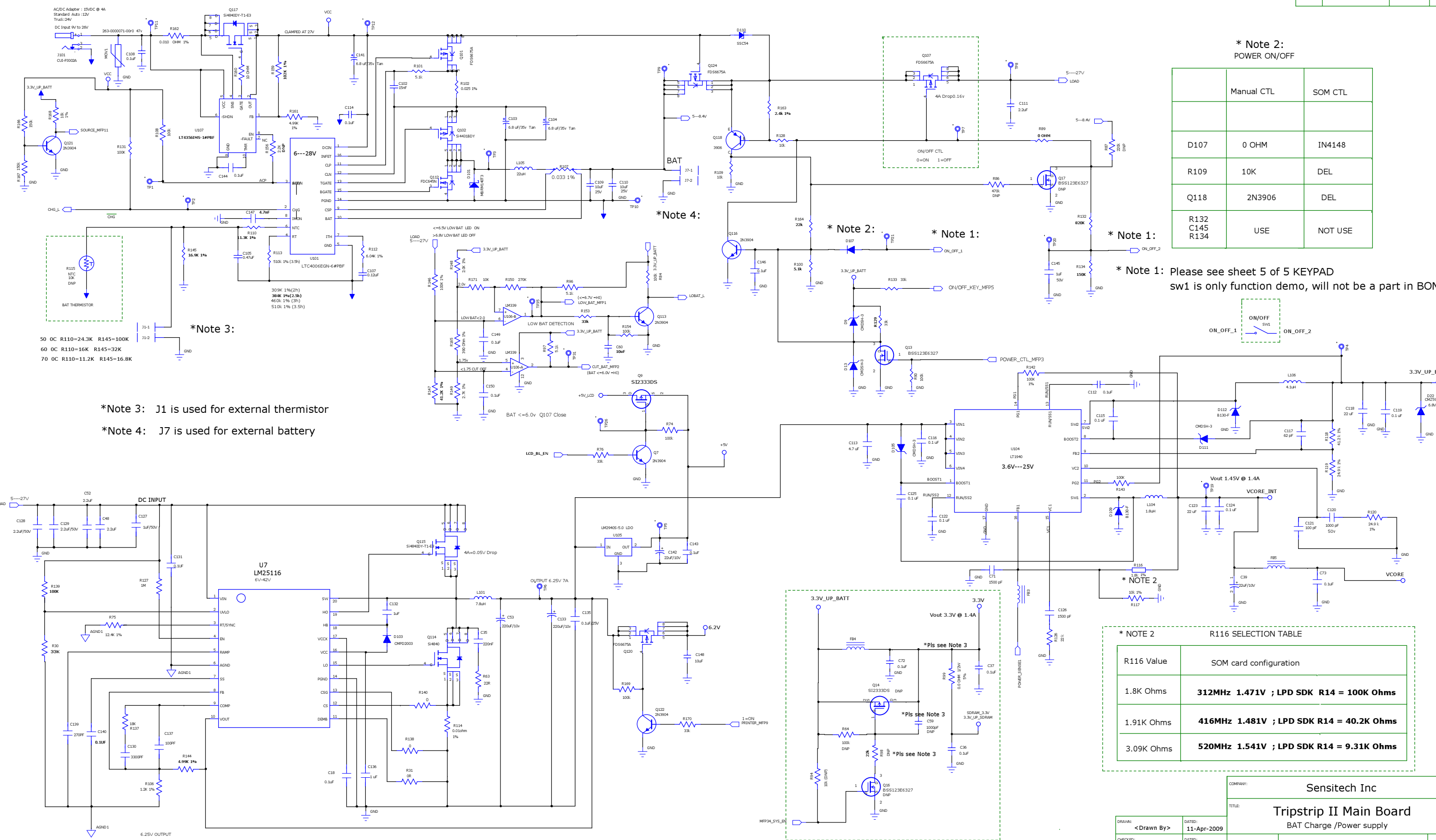


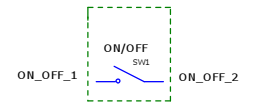
REVISION RECORD			
Version	Change Description	APPROVED:	DATE:
A	ECO #762 Release		02/03/09



\* Note 2:  
POWER ON/OFF

	Manual CTL	SOM CTL
D107	0 OHM	IN4148
R109	10K	DEL
Q118	2N3906	DEL
R132 C145 R134	USE	NOT USE

\* Note 1: Please see sheet 5 of 5 KEYPAD  
sw1 is only function demo, will not be a part in BOM.



\*Note 3:

- 50 OC R110=24.3K R145=100K
- 60 OC R110=16K R145=32K
- 70 OC R110=11.2K R145=16.8K

\*Note 3: J1 is used for external thermistor  
\*Note 4: J7 is used for external battery

\* NOTE 2

R116 Value	SOM card configuration
1.8K Ohms	312MHz 1.471V ; LPD SDK R14 = 100K Ohms
1.91K Ohms	416MHz 1.481V ; LPD SDK R14 = 40.2K Ohms
3.09K Ohms	520MHz 1.541V ; LPD SDK R14 = 9.31K Ohms

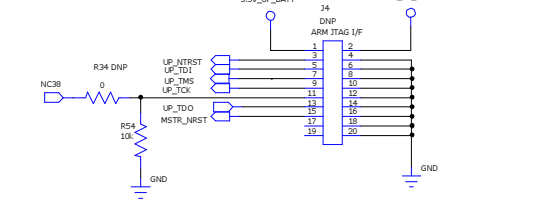
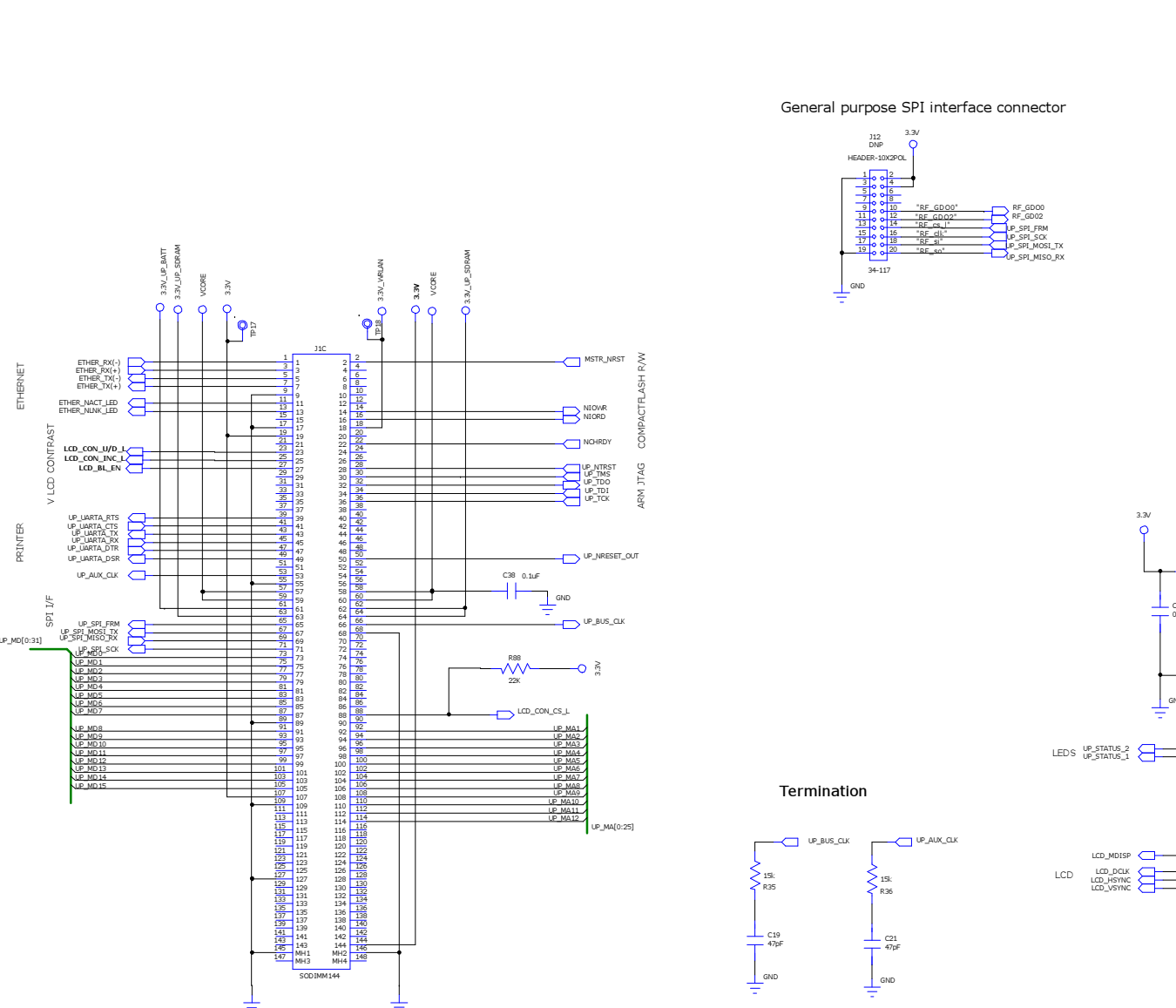
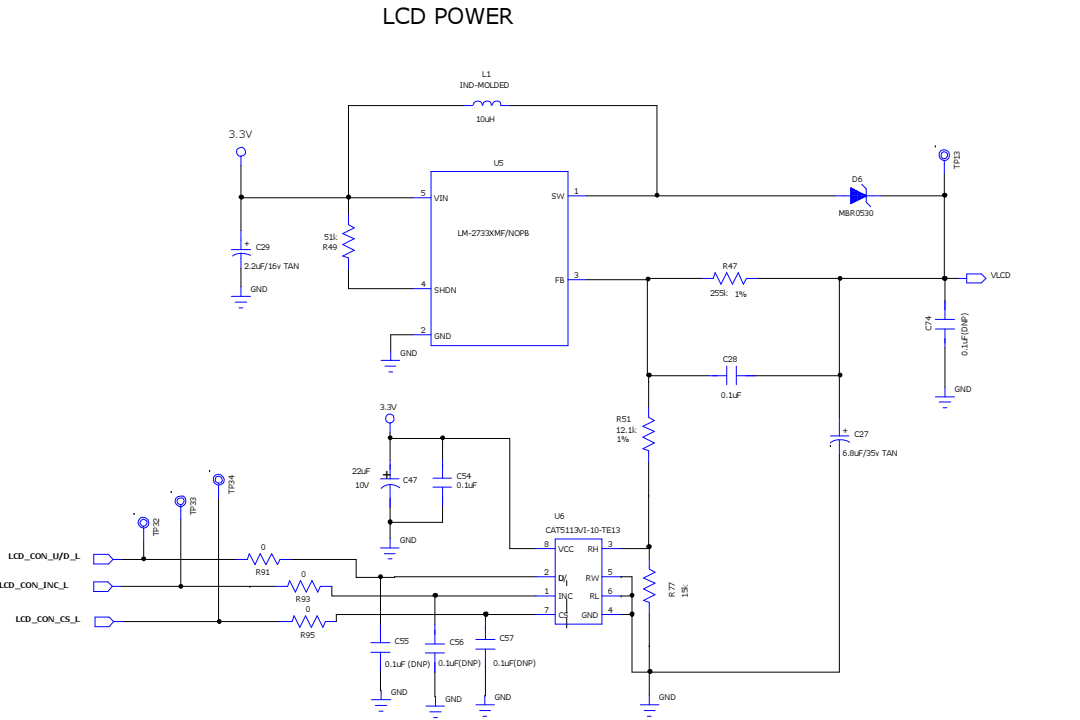
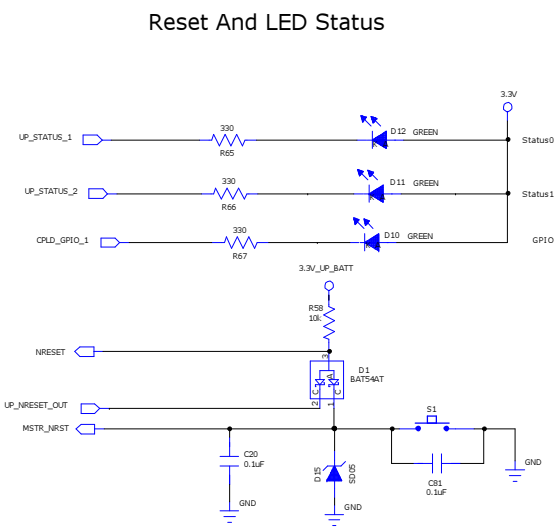
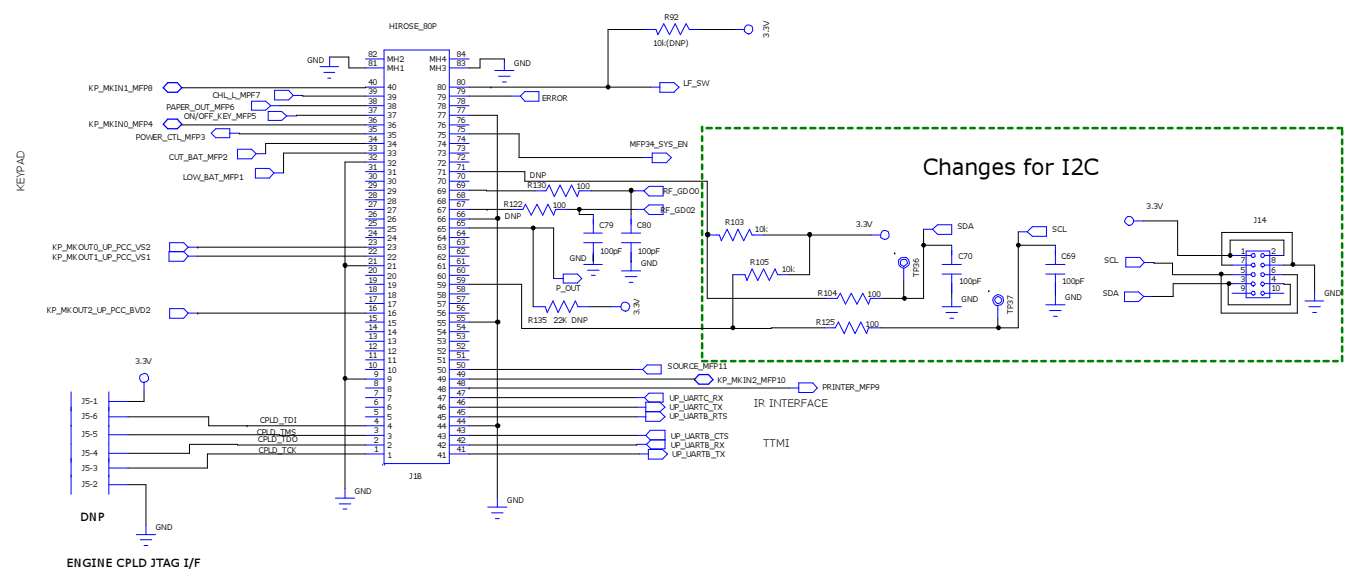
\*Note 3: All of this parts would be added on PCB 14001300 REV3.0

COMPANY: Sensitech Inc

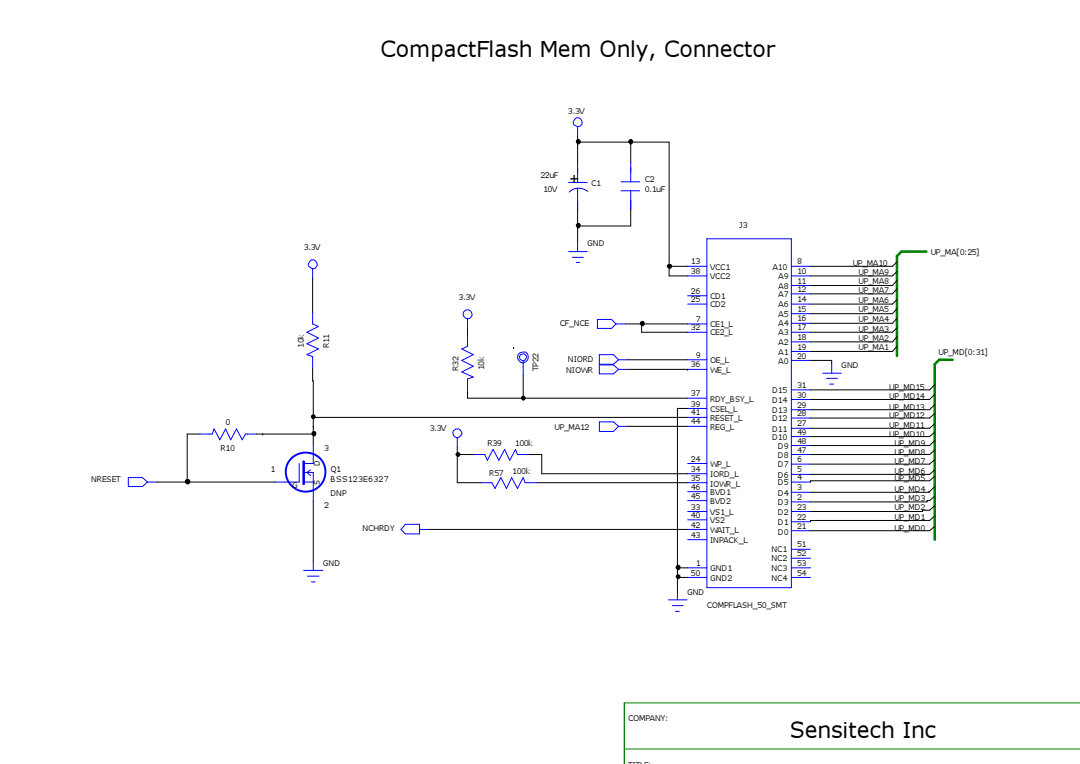
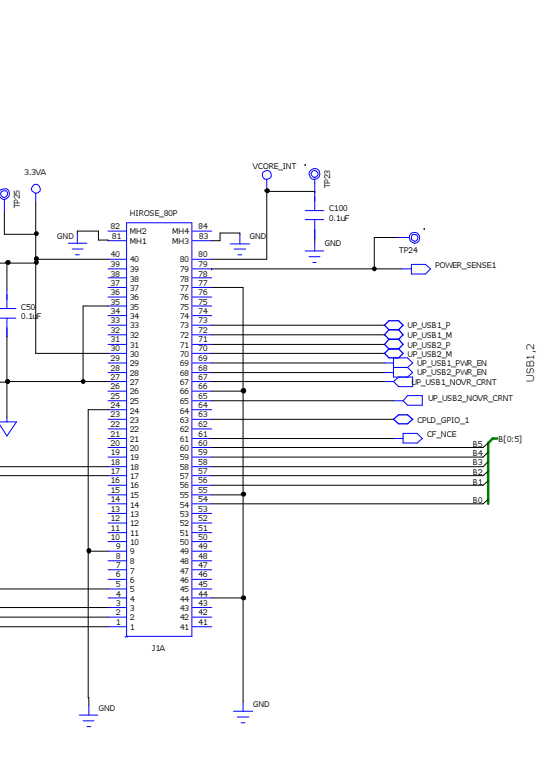
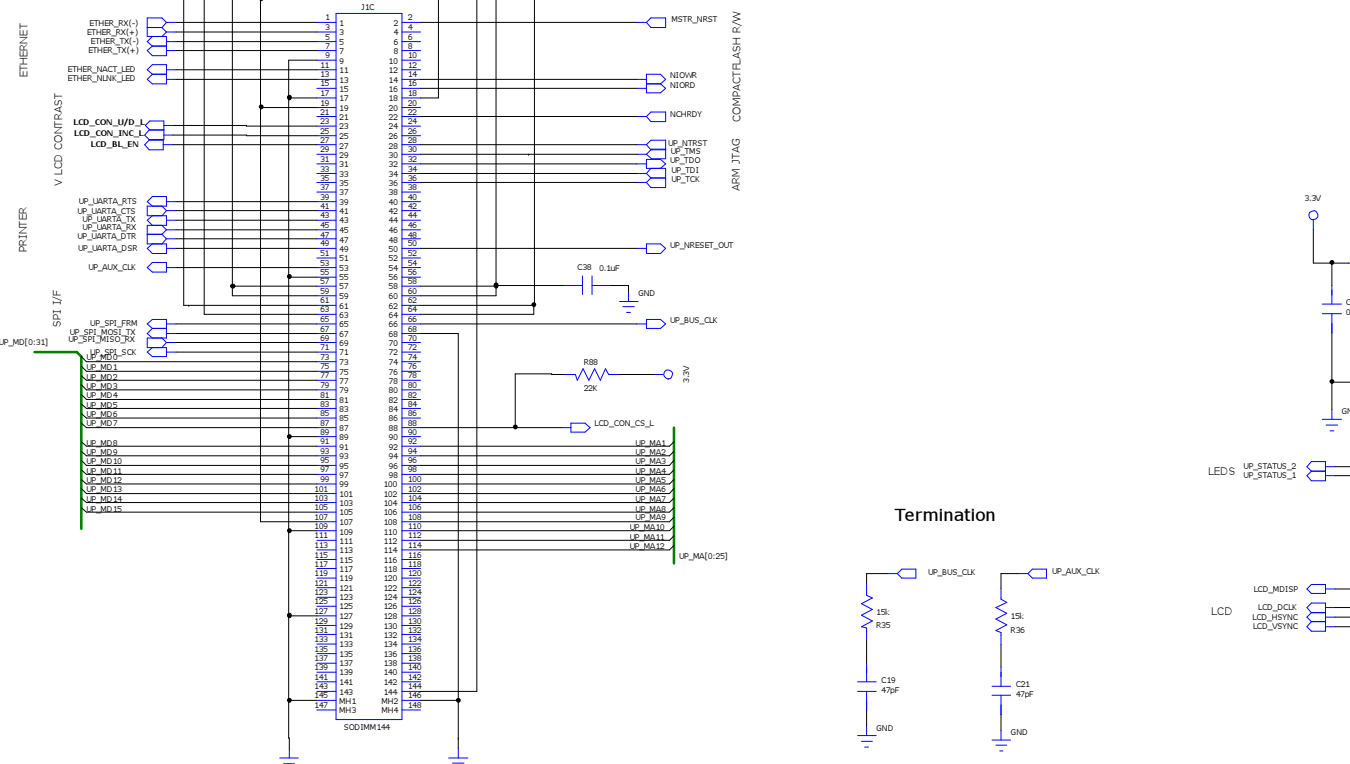
TITLE: Tripstrip II Main Board  
BAT Charge /Power supply

DRAWN: <Drawn By>	DATED: 11-Apr-2009	SIZE: D	Document NO: T13001300	REV: 3.48A
CHECKED: <Checked By>	DATED: <Checked Date>	APPROVED: <APPROVED Date>		
RELEASED: <Released By>	DATED: <Release Date>	JDI# SCH-408-36063-R03	SCALE: 1:1	SHEET: 1 OF 3

REVISION RECORD			
Version	Change Description	APPROVED:	DATE:
A	ECC #762 Release		02/03/09



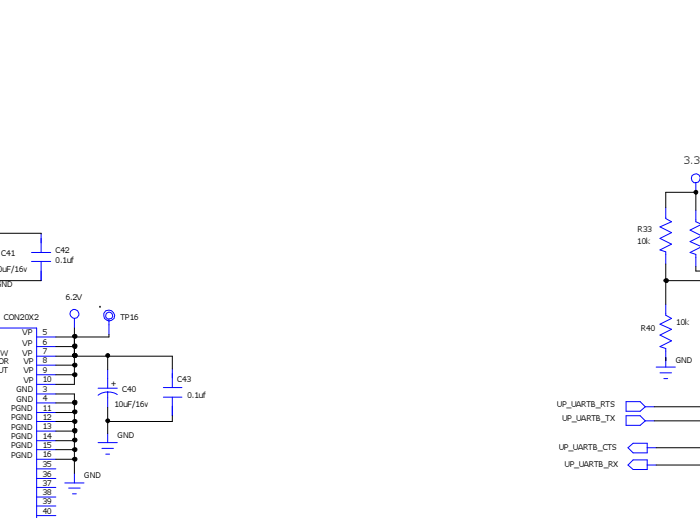
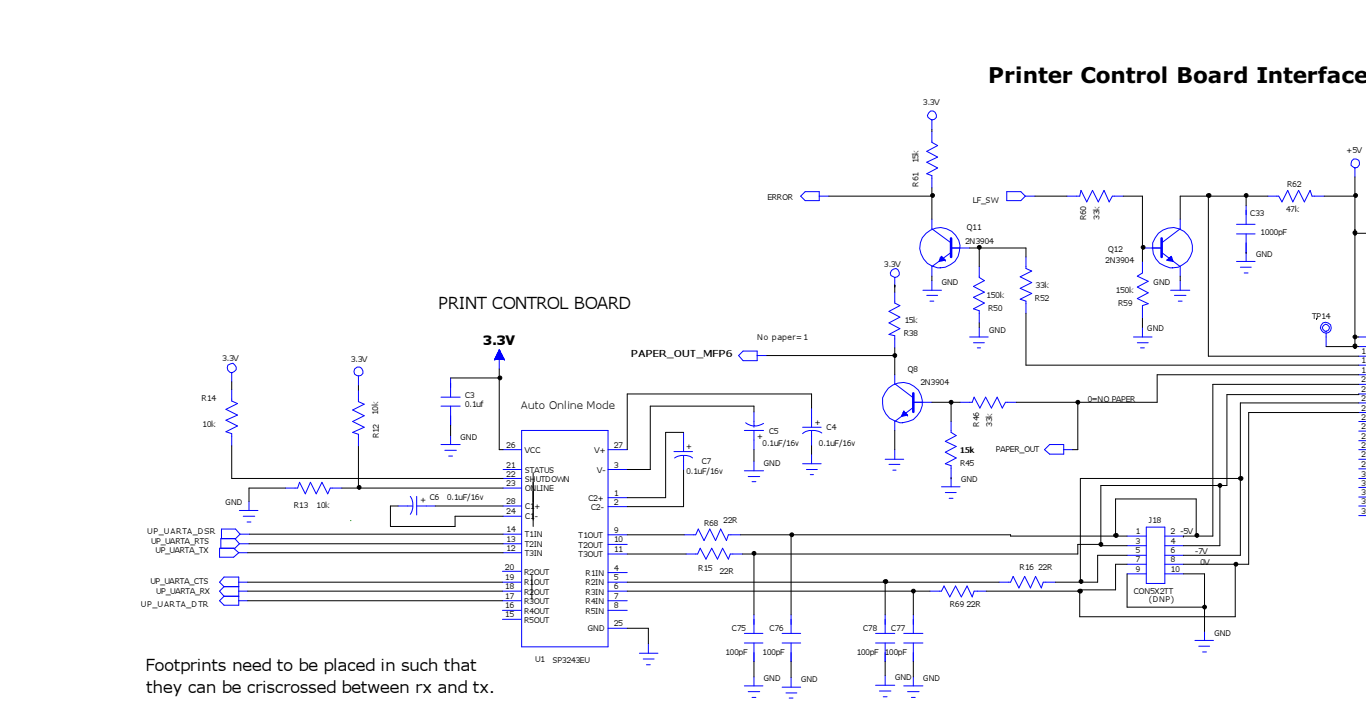
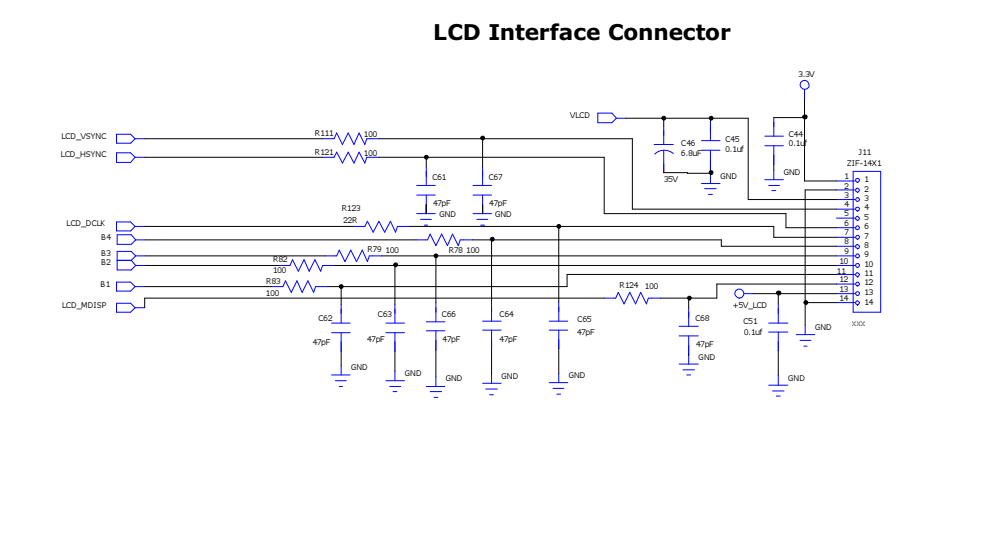
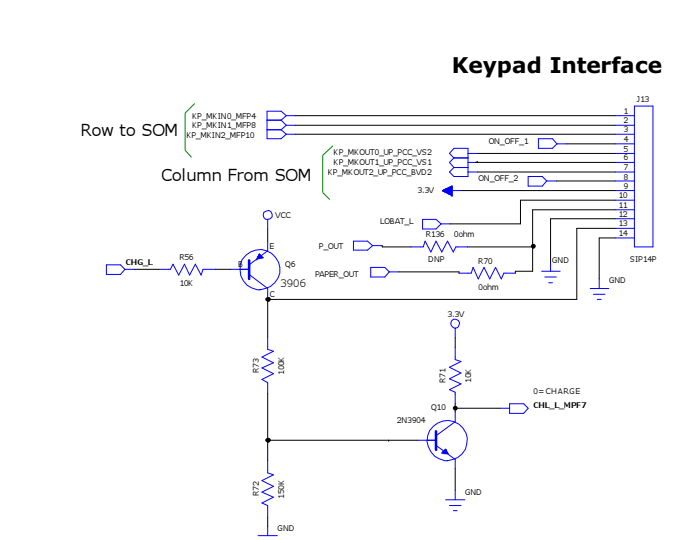
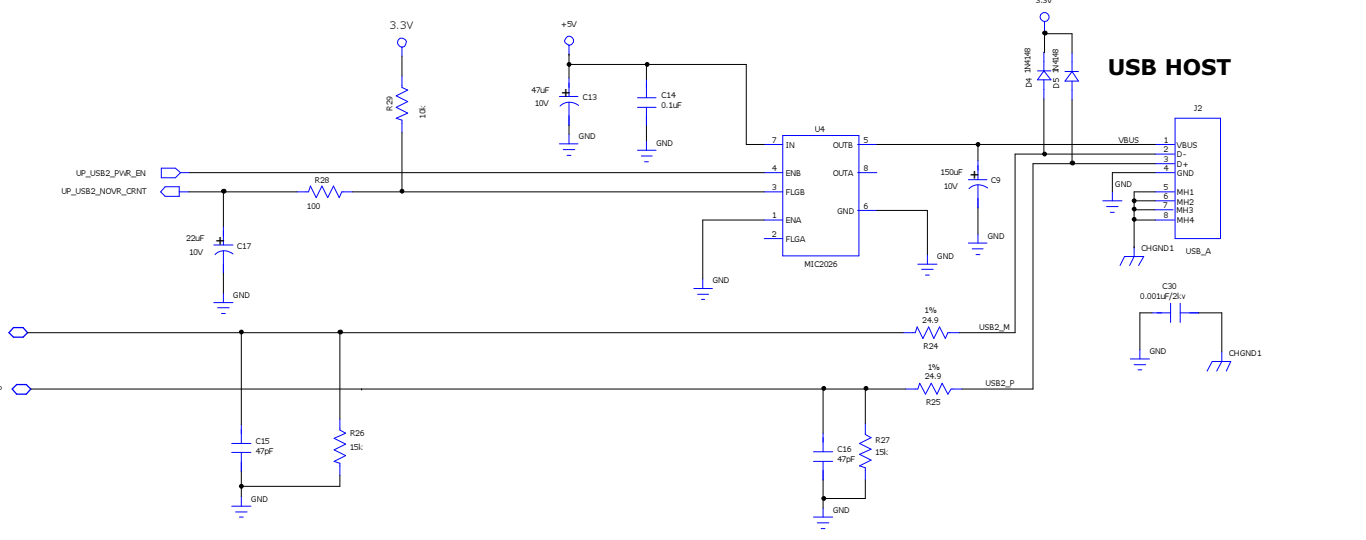
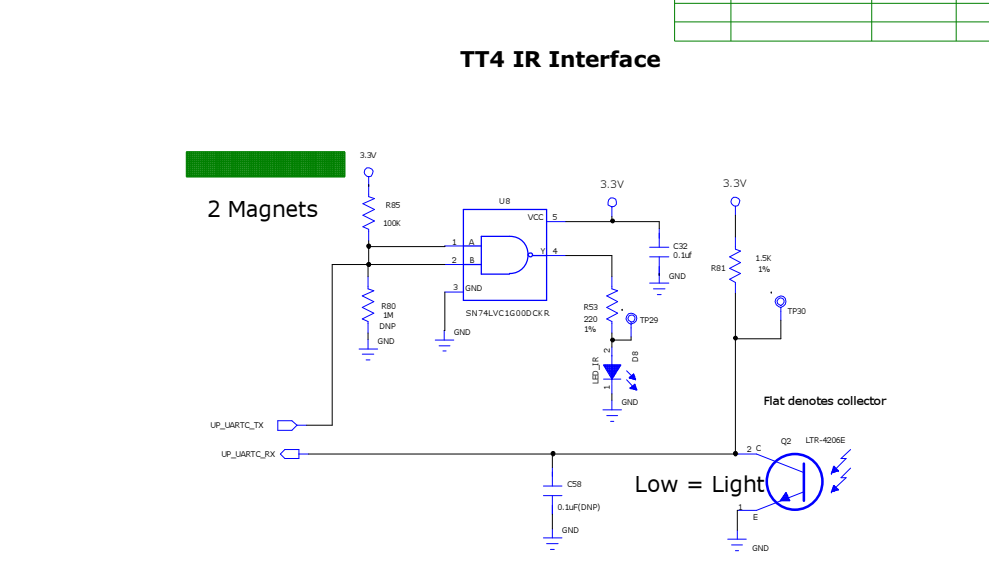
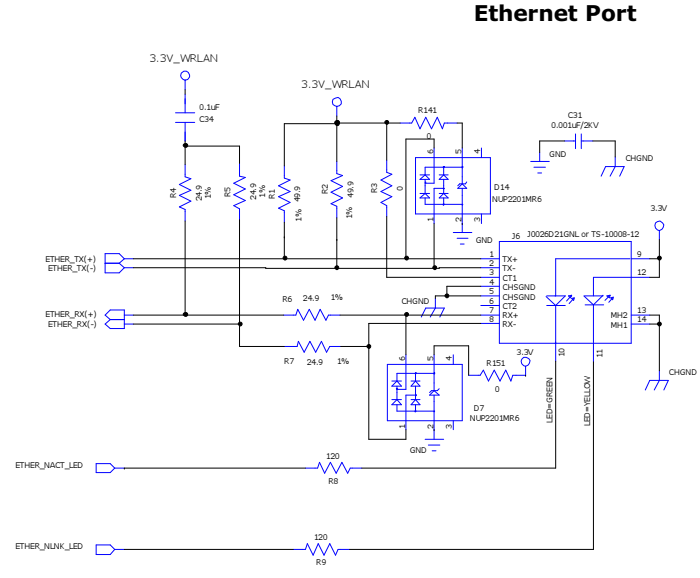
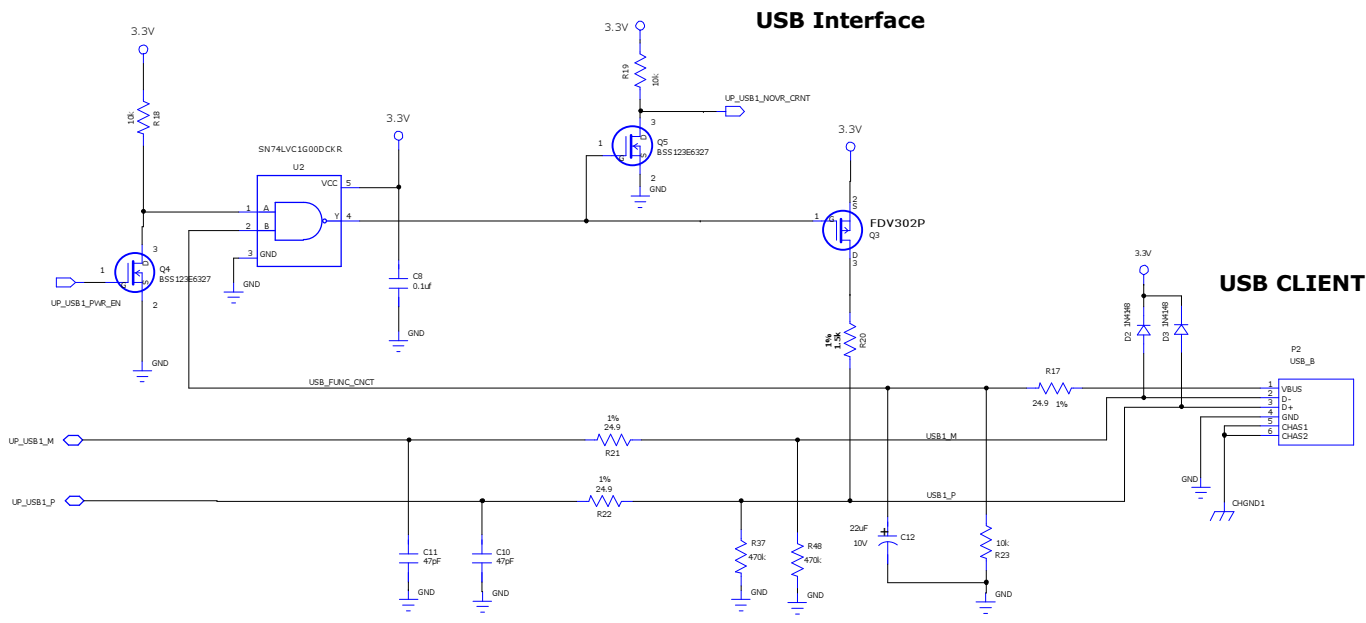
V\_LCD ADJUSTABLE FOR CONTRAST FROM 22.8V(white) TO 25.5V



DRAWN: <Drawn By>		DATED: 11-Apr-2009	
CHECKED: <Checked By>		DATED: <Checked Date>	
APPROVED BY: <QC By>		DATED: <APPROVED Date>	
RELEASED: <Released By>		DATED: <Release Date>	

COMPANY: Sensitech Inc	
TITLE: Tripstrip II Main Board SOM&C INT LCDPWR	
SIZE: D	Document ID: T13001300
REV: 3.48A	
DOI# SCH-408-3063-R03	SCALE: 1:1 SHEET: 2 OF 3

REVISION RECORD			
Version	Change Description	APPROVED:	DATE
A	ECO #752 Release		02/03/09

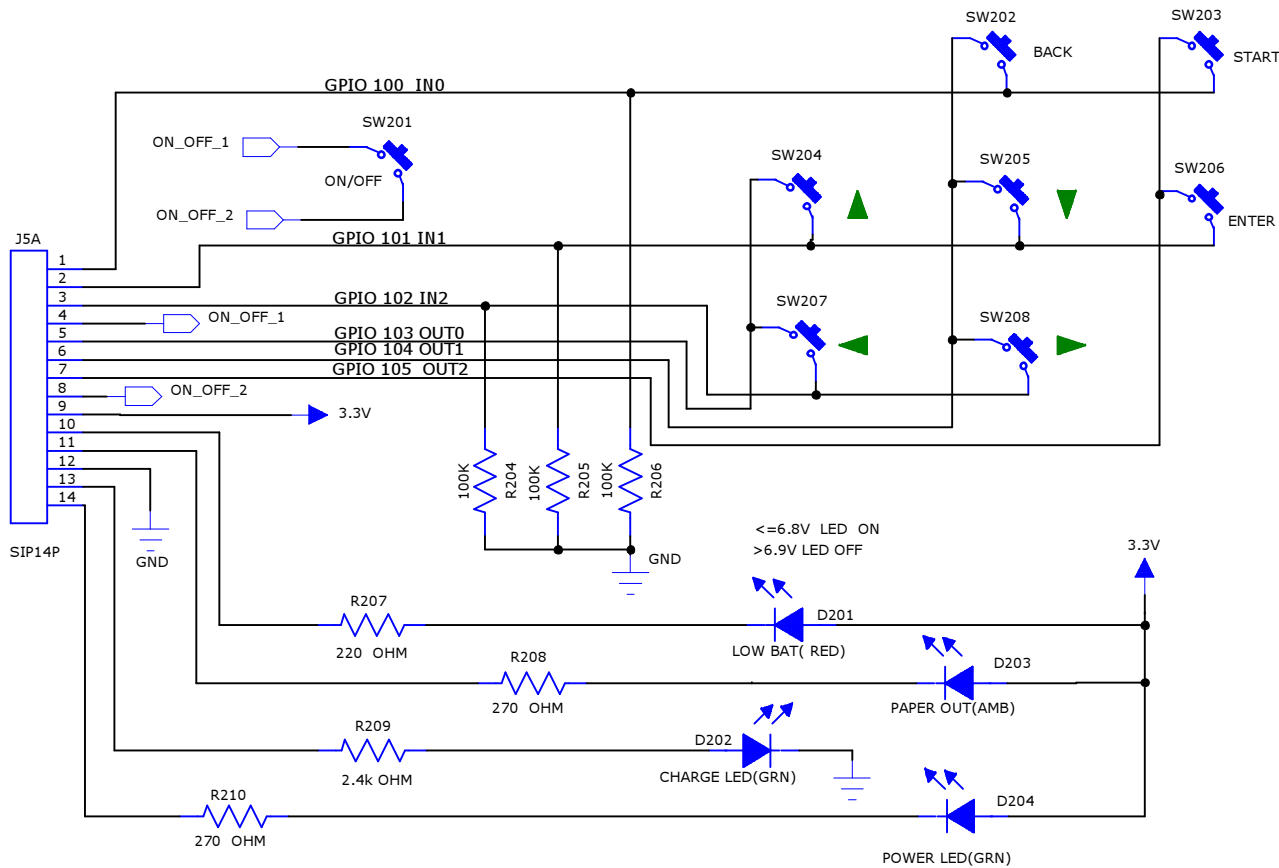


Footprints need to be placed in such that they can be crisscrossed between rx and tx.

COMPANY:		Sensitech Inc	
TITLE:		Tripstrip II Main Board INTERFACE CIRCUITS	
DRAWN: <Drawn By>	DATED: 11-Apr-2009	SIZE:	Document NO:
CHECKED: <Checked By>	DATED: <Checked Date>	D	T13001300
APPROVED BY: <QC By>	DATED: <APPROVED Date>	REV:	3.48A
RELEASED: <Released By>	DATED: <Release Date>	J01#	SCH-408-30063-R03
SCALE: 1:1		SHEET: 3 OF 3	

ALL INFORMATION DISCLOSED BY THIS DOCUMENT IS CONSIDERED CONFIDENTIAL AND PROPRIETARY BY SENSITECH, INC.  
 ALL DESIGN, MANUFACTURE, USE, REPRODUCTION AND SALE RIGHTS ARE RESERVED BY SENSITECH, INC.

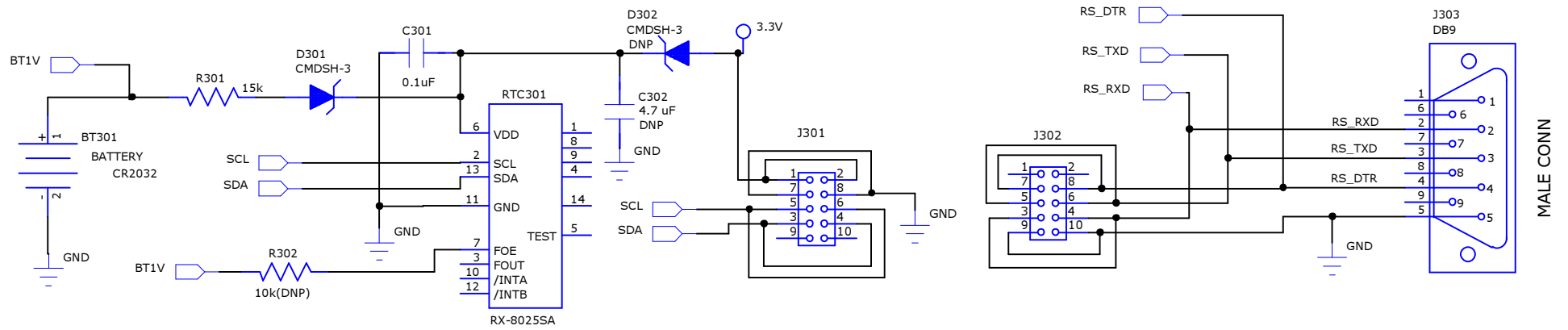
REVISION RECORD			
Version	Change Description	APPROVED:	DATE:



COMPANY:		Sensitech Inc	
TITLE:		Tripstrip II KEYPAD_BOARD	
DRAWN BY: <Drawn By>	DATED: 16-Jan-2009	SIZE:  D	Document NO:  T13001310
CHECKED BY: <Checked By>	DATED: <Checked Date>	REV: 3.48A	SCALE: 1 : 1
APPROVED BY: <APPROVED By>	DATED: <APPROVED Date>		
RELEASED: <Released By>	DATED: <Release Date>	SHEET: 1 OF 1	
JDI# SCH-408-36063-R03			

ALL INFORMATION DISCLOSED BY THIS DOCUMENT IS CONSIDERED CONFIDENTIAL AND PROPRIETARY BY SENSITECH, INC.  
 ALL DESIGN, MANUFACTURE, USE, REPRODUCTION AND SALE RIGHTS ARE RESERVED BY SENSITECH, INC.

REVISION RECORD			
LTR	ECO NO:	APPROVED:	DATE:



COMPANY:		Sensitech Inc	
TITLE:		Tripstrip II RTC_BOARD	
DRAWN: <Drawn By>	DATED: 16-Jan-2009	SIZE: D	REV: 3.48A
CHECKED: <Checked By>	DATED: <Checked Date>	Document NO: T13001350	
APPROVED BY: <QC By>	DATED: <APPROVED Date>		
RELEASED: <Released By>	DATED: <Release Date>	JDI# SCH-408-36063-R03	SCALE: 1:1
		SHEET: 1 OF 1	