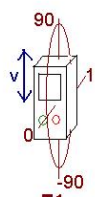
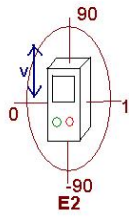


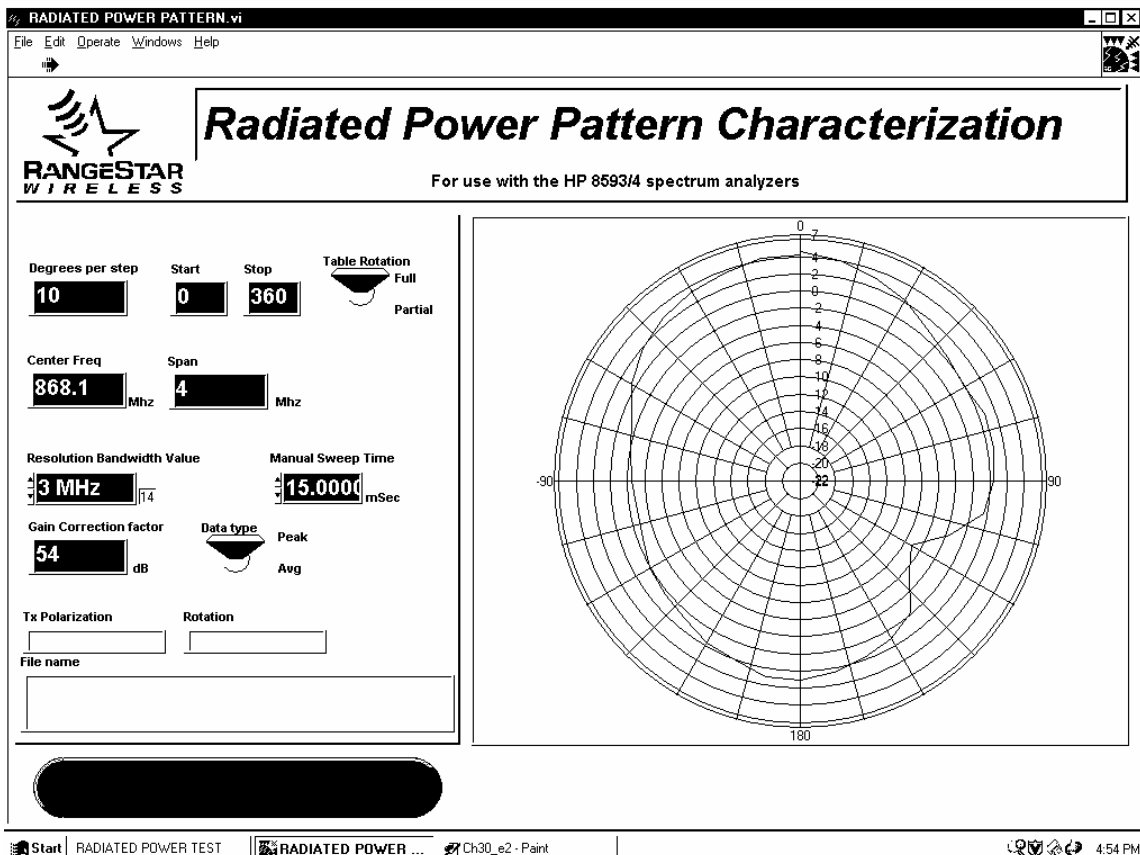
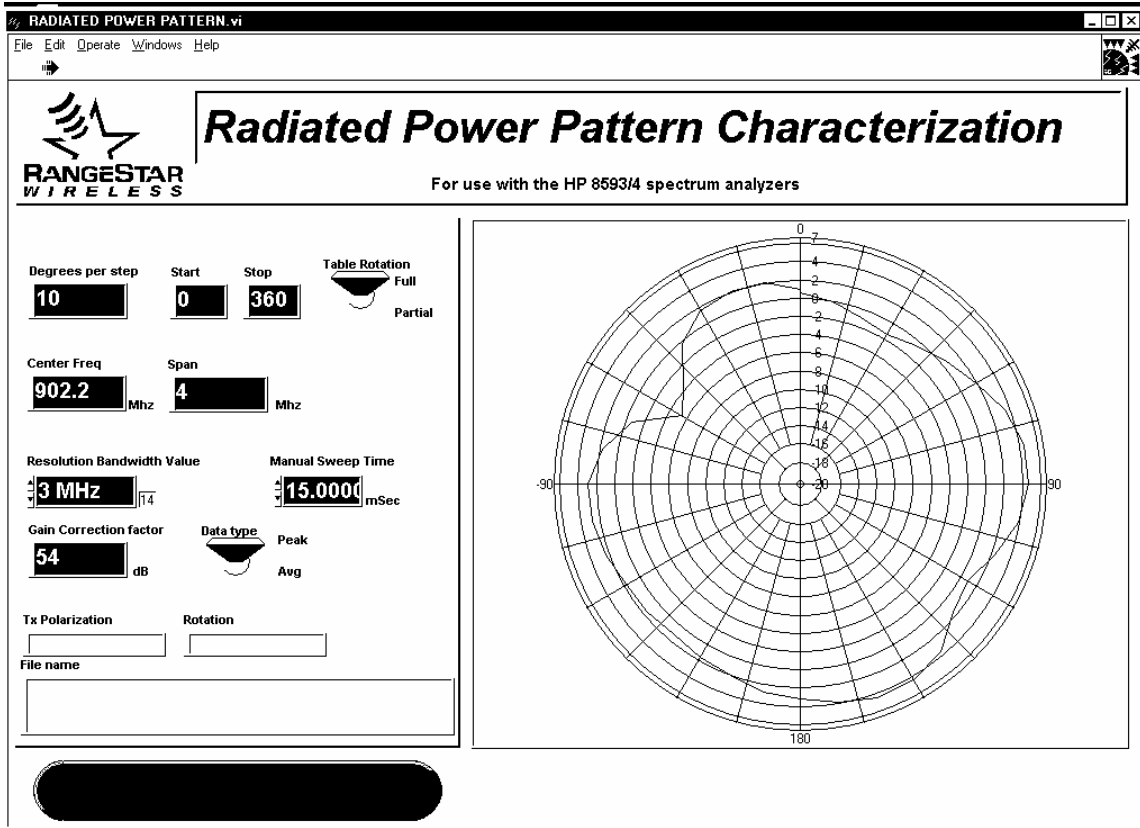
AZ
Azimuth

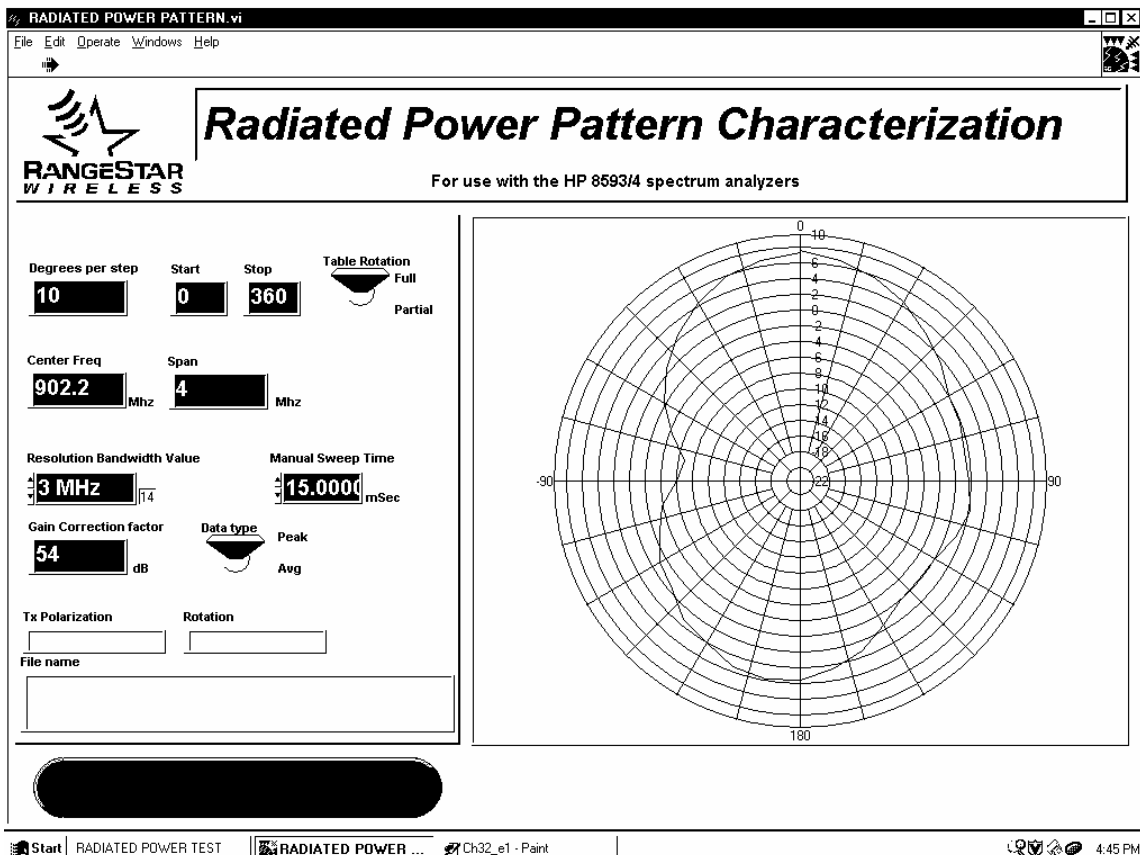
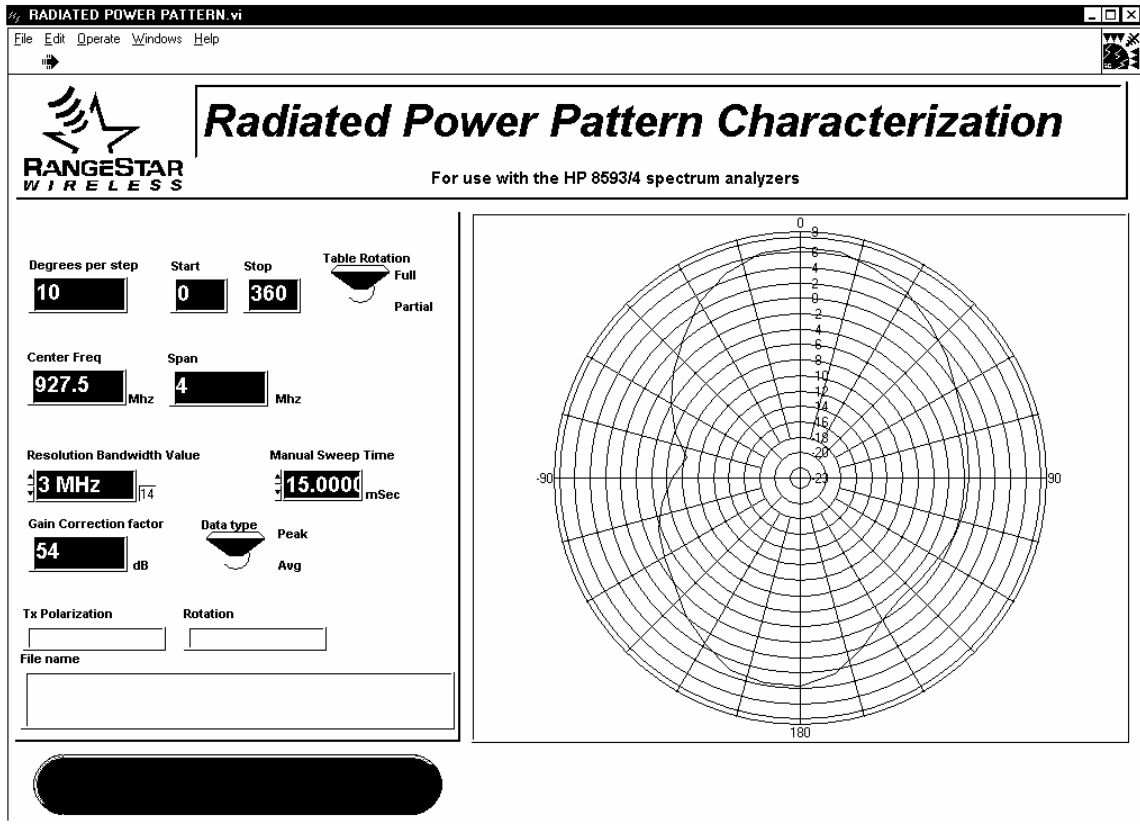


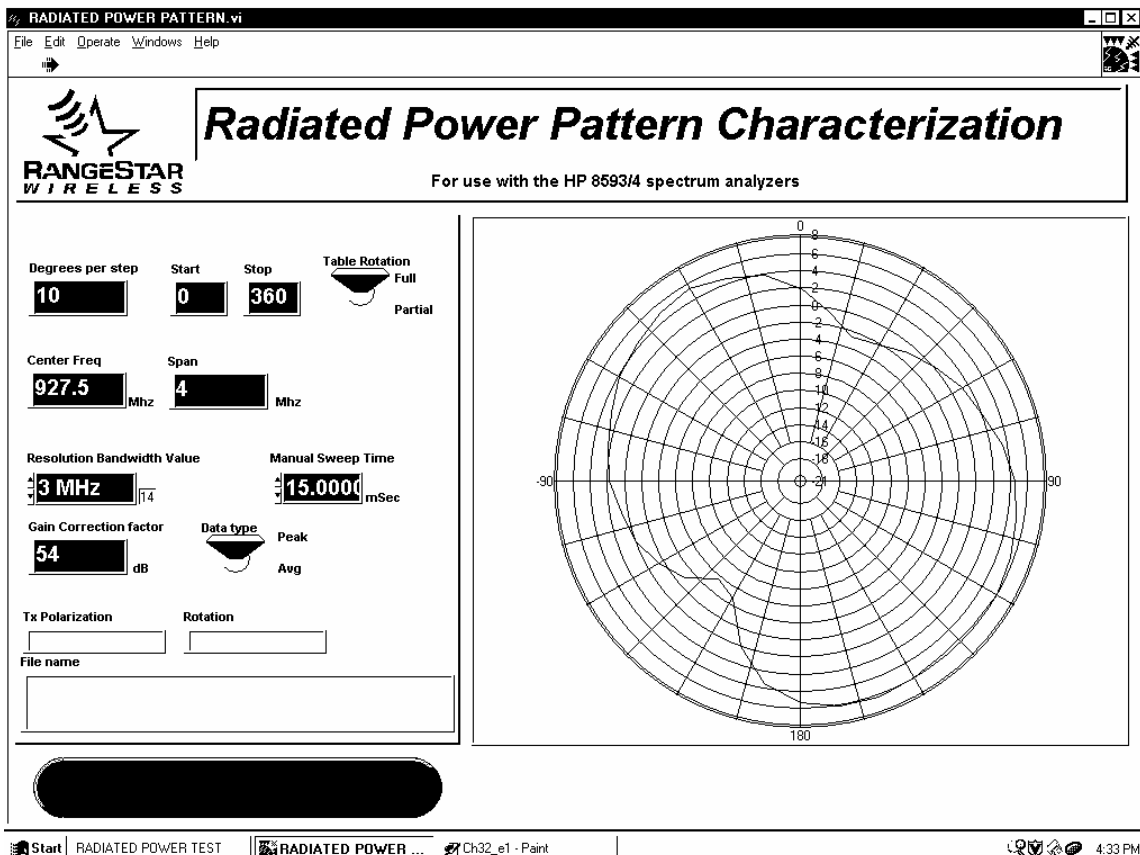
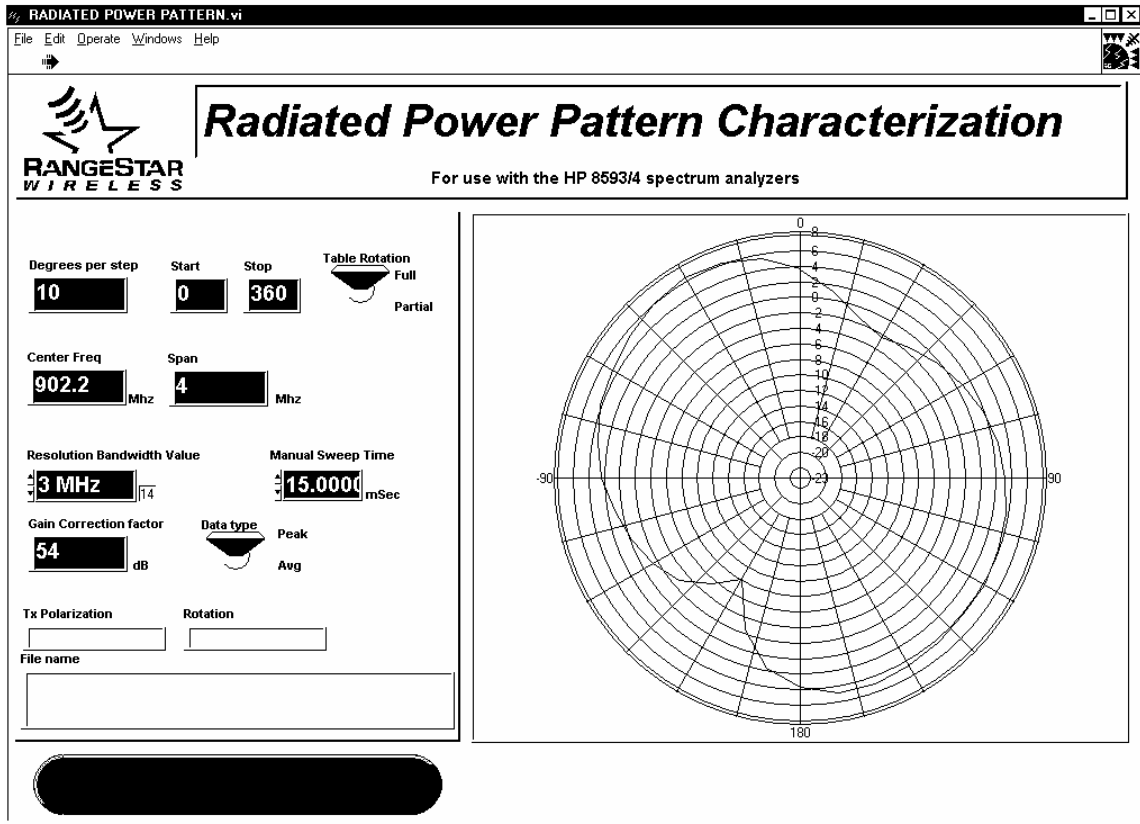
E1
Elevation 1



E2
Elevation 2








RADIATED POWER PATTERN.vi

File Edit Operate Windows Help



Radiated Power Pattern Characterization

For use with the HP 8593/4 spectrum analyzers

Degrees per step: Start: Stop: Table Rotation: Full Partial

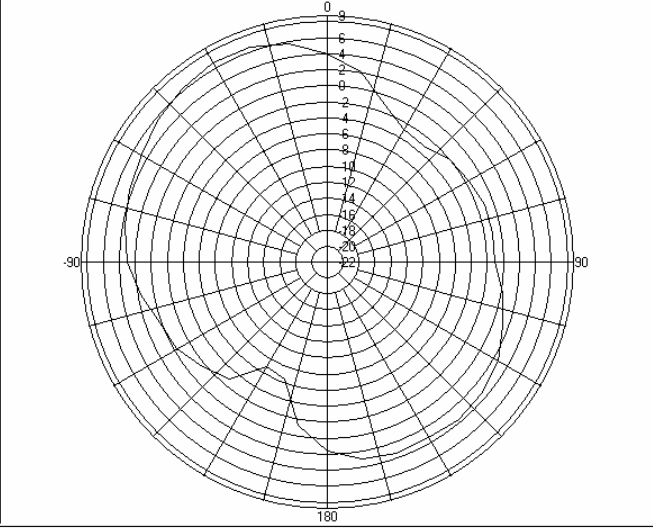
Center Freq: Mhz Span: Mhz

Resolution Bandwidth Value: MHz Manual Sweep Time: mSec

Gain Correction factor: dB Data type: Peak Avg

Tx Polarization: Rotation:

File name:



The plot is a polar coordinate system with concentric circles representing power levels and radial lines representing angles. The radial axis is labeled from 0 to 22 in increments of 2. The angular axis is labeled from 0 to 180 in increments of 30. A signal trace is visible, showing a main peak at approximately 180 degrees and a smaller peak at approximately 90 degrees.

