

Stay activate, stay healthy with Energy Capsule.

ENERGY CAPSULE

by Maxwell Guider Technology

Technical Spec

Wireless: Bluetooth Smart. Standard BLE profile

Battery: CR2032 Coin Cell Battery

Battery life: 1 year, 24 hours per day

Transmission Range: ~10m / 33 ft

Transmission Range: ~10m / 33 ft

Weight: 5g / 0.18 oz (with battery)

Operating Temperature: -10°C~50°C / 14°F~122°F

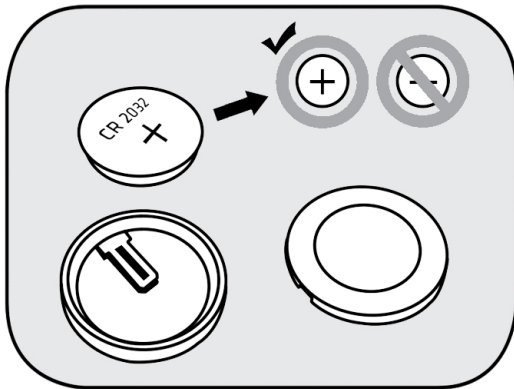
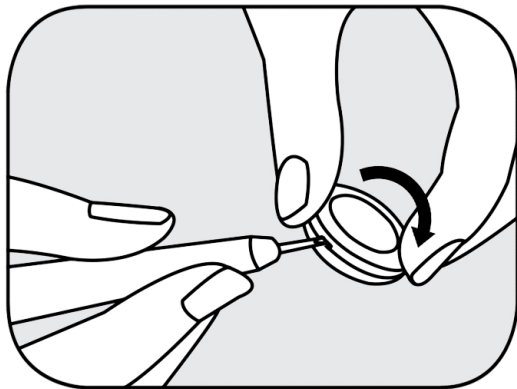
Waterproof: IPX4

Quick Start

- Download the body sensor app from iTunes.
- Make sure your iPhone's Bluetooth is turned on in the settings.
- Open the app. Input your data to begin using the app, and go to **settings > Device connection > Search for device**
Tap the NULL ID to pair your capsule with your phone for the first time. Your capsule should flash a blue light when connected.
- Place the capsule in your pocket and bring it with you as you move.
- To upload your capsule's data to the phone, go to the Home page and pull down the image in the center.

Changing Battery

- Remove the battery cover by inserting the tip of a small screwdriver into the gap between the cover and the lower half. Twist the screwdriver to pop off the cover.
- Replace the battery as indicated in the picture
- Snap the batter cover back closed



FCC INFORMATION

This device complies with Part 15 of the FCC Rules. Operation is subject to the following two conditions:

1. This device may not cause harmful interference, and 2. This device must accept any interference received, including interference that may cause undesired operation.

Note: This equipment has been tested and found to comply with the limits for a Class B digital device, pursuant to part 15 of the FCC Rules. These limits are designed to provide reasonable protection against harmful interference in a residential installation. This equipment generates, uses and can radiate radio frequency energy and, if not installed and used in accordance with the instructions, may cause harmful interference to radio communications. However, there is no guarantee that interference will not occur in a particular installation. If this equipment does cause harmful interference to radio or television reception, which can be determined by turning the equipment off and on, the user is encouraged to try to correct the interference by one or more of the following measures:

- Reorient or relocate the receiving antenna.
- Increase the separation between the equipment and receiver.
- Connect the equipment into an outlet on a circuit different from that to which the receiver is connected.
- Consult the dealer or an experienced radio/TV technician for help.

Caution: Any changes or modifications not expressly approved by the party responsible for compliance could void the user's authority to operate this equipment.

Compatible with iPhone 4S+ / iOS 5+

* This device is designed to connect specifically to iPhone and has been certified by the developer to meet Apple performance standards.

* iPhone is a trademark of Apple Inc., registered in the U.S. and other countries.

