



TrackR Setup Guide

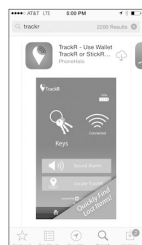
Apple® Fans Start Here

- 1** Make sure your device is compatible



iPhone® 4S & Later, iPad® Mini & Later, iPad 3rd Gen. & Later with iOS 7 or Later.

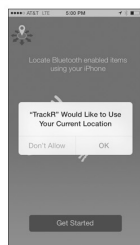
- 2** Download the TrackR app
Search the App Store for TrackR,
look for the icon, as seen below.



- 3** Make sure Bluetooth is ON,
and open the TrackR app.



- 4** Select “OK” to Current Location & Bluetooth permissions. We need these permissions in order for the app to work. If you accidentally select no, please go to iPhone settings to enable these. Settings> Privacy> Location Services, and switch TrackR ON.



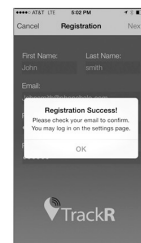
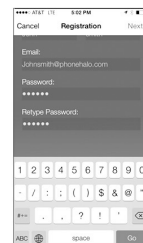
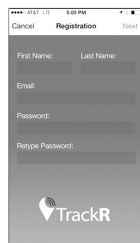
- 5** In the App, select “Get Started”.



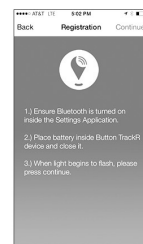
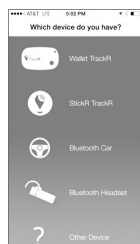
Please visit www.thetrackr.com/support,
or email support@thetrackr.com.

Android Fans, Please see the reverse side.

- 6** Register for Crowd GPS capabilities.
You will receive an email, to confirm your account.
When done, select “Next” in the upper right corner.
(Registration is completely optional)



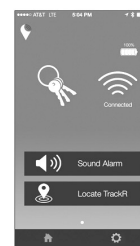
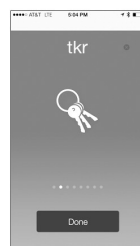
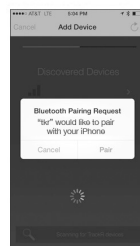
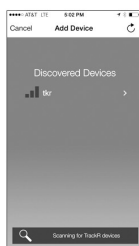
- 7** Select “StickR TrackR” from the list of compatible devices.
Select “Continue” to show the “Add Device” screen.



- 8** Push the button on the
MEZZI TrackR device.
The blue LED will blink.



- 9** Select “tkr” and the app will connect. Follow the on
screen instructions and enjoy your TrackR!





TrackR Setup Guide

Android® Fans Start Here

- 1** Make sure your device is compatible.



Android 4.4 & Later with Bluetooth® Low Energy.

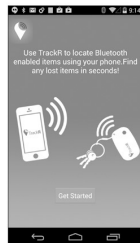
- 2** Download the TrackR app from Google Play. Search Google Play for TrackR, look for the icon as seen below.



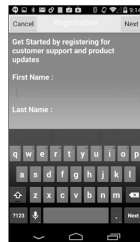
- 3** Make sure Bluetooth is ON, and open the TrackR app.



- 4** Press the “Get Started” button in the app.



- 5** Register the app for future news, support, and discounts. When done select Next in the top right

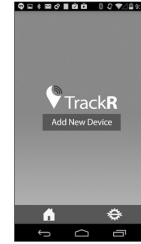
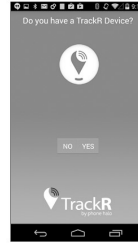


Registration is optional.

Please visit www.thetrackr.com/support, or email support@thetrackr.com.

Apple Fans, Please see the Reverse Side

- 6** Select Yes when asked if you have a TrackR device with you, then select add a new device.



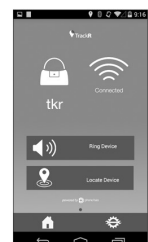
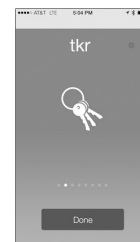
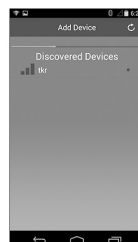
- 7** Push the button on the MEZZI TrackR device. The LED will blink.



- 8** In the TrackR app, the Add Device screen should be showing. Select refresh at the top right corner, and “tkr” should appear on the screen.



- 9** Select **tkr** and the app will connect. Select “Pair” when prompted, and the device will beep to let you know it connected properly. Follow the on-screen instructions and enjoy TrackR.



This device complies with Part 15 of the FCC Rules. Operation is subject to the following two conditions:
(1) this device may not cause harmful interference, and (2) this device must accept any interference received, including interference that may cause undesired operation.

Federal Communications Commission (FCC) Statement

This device complies with part 15 of the FCC Rules. Operation is subject to the following two conditions: (1) This device may not cause harmful interference, and (2) this device must accept any interference received, including interference that may cause undesired operation.

Note: The manufacturer is not responsible for any radio or tv interference caused by unauthorized modifications to this equipment. Such modifications could void the user's authority to operate the equipment.

Warning:

Changes or modifications made to this device not expressly approved by US Offshore Group may void the FCC authorization to operate this device.