

Keyboard

User Manual

Bluetooth Keyboard for iPad



Packing Contents:

1. Bluetooth keyboard
2. USB Power Charging cable
3. User Guide

Product Features:

1. Built-in wireless Bluetooth 3.0 keyboard.
2. Modern style designed for iPad.
3. iPad display stand for easy viewing.
4. Built-in Rechargeable lithium battery last for approximately 55 hours per charge.
5. Special 【□】 screen key for one touch access to variety for application.
6. Light weight, quiet key strokes, water-proof and dust-proof.
7. Energy saving keyboard sleep mode.
8. Portable Power Bank and Mobile Power

2.0 Keyboard Specification:

1. Bluetooth 3.0 interface standard.
2. Operating Distance to 10 meters
3. Modulation System: GFSK
4. Operating Voltage: 3.0-5.0V.
5. Working Current: $<1.5\text{mA}$
6. Standby Current: $800\mu\text{A}$
7. Sleeping Current: $<200\mu\text{A}$
8. Charging Current: 1.5A
9. Standby Time: 600 days
10. Charging Time: 120 hours
11. Lithium Battery Capacity: 160mAh
12. Uninterrupted Working Time: 550 hours
13. Lithium Battery life: 3 years
14. Lithium Battery Specifications: $45 \times 16 \times 5\text{mm}$
15. Key Strength: $80 \pm 10\text{g}$
16. Key Life: 5 million strokes
17. Operating Temperature: -10°C to $+55^{\circ}\text{C}$

Bluetooth Keyboard Pairing

Step 1: Turn on the power toggle switch. The [power] and [bluetooth] indicator light will be on for 5 seconds, then the light will go off.

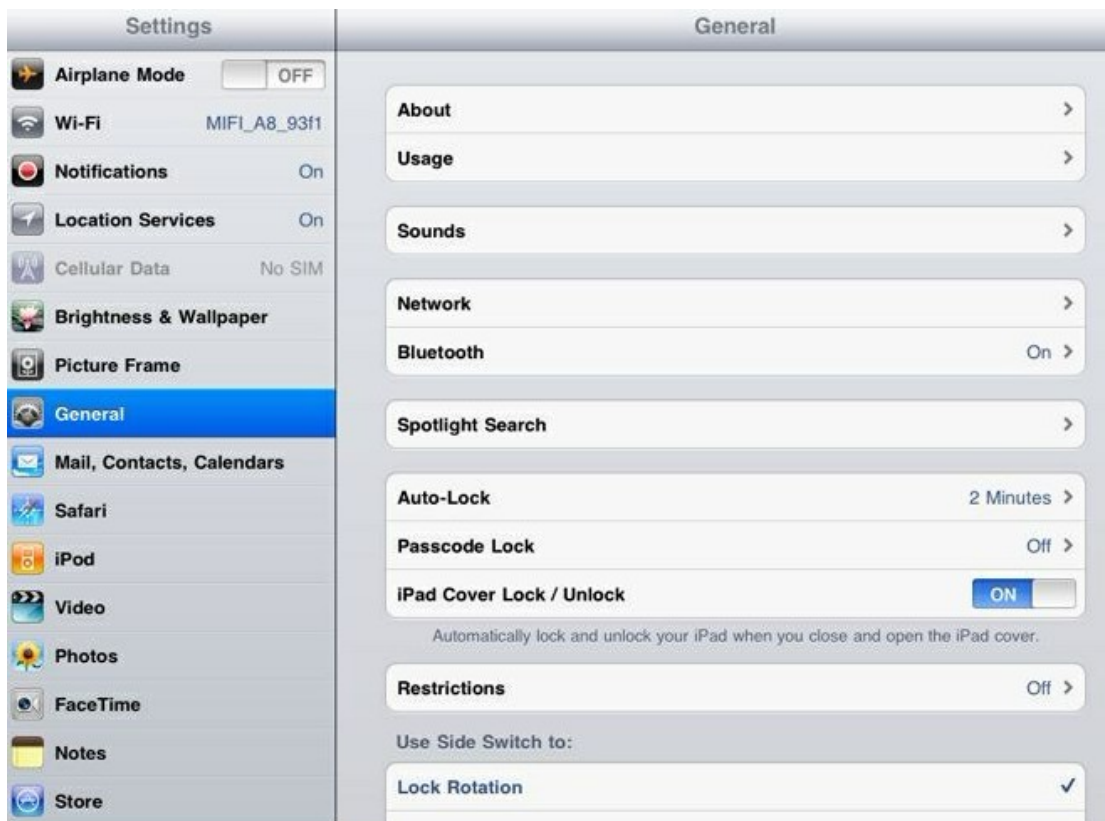
Step 2: Press on the [connect] button. The [bluetooth] indicator light will be blinking, and the [power] indicator light will be on. The keyboard is now ready to be connected to iPad.



Step 3: turn on and unlock iPad. Click on the iPad[Setting]icon



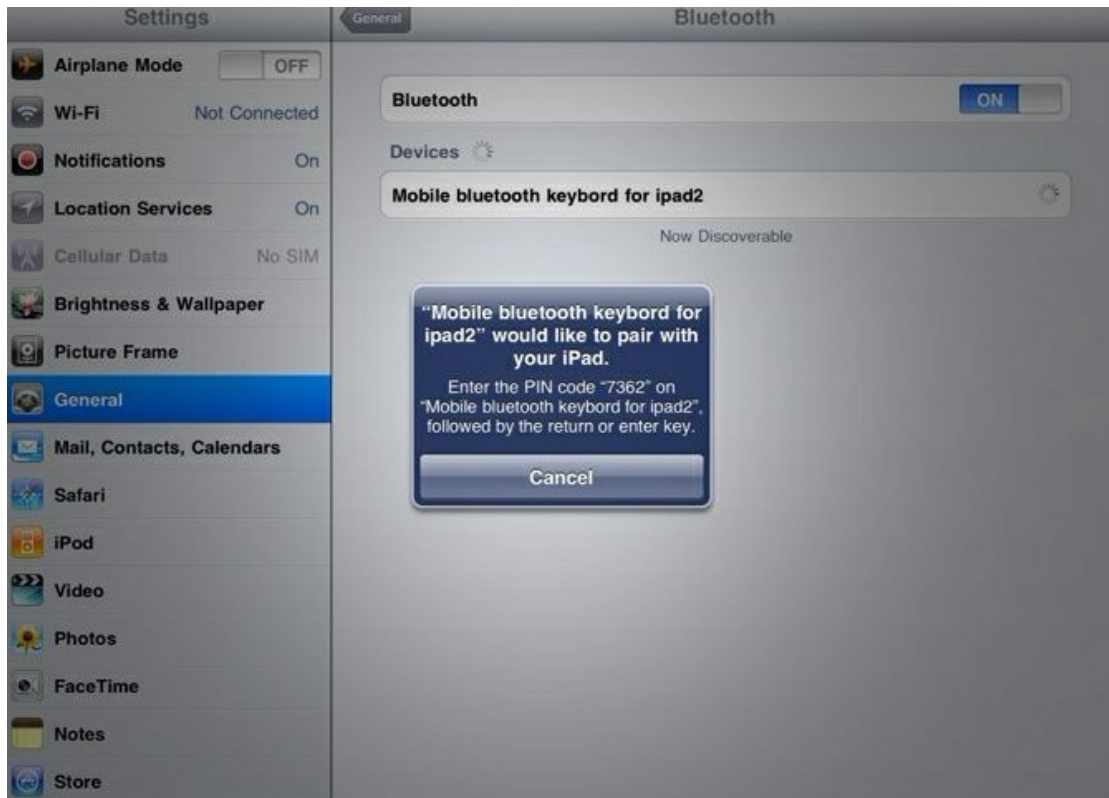
Step4: on the settings menu, select item [General] to access [bluetooth] settings, Click on [bluetooth] to turn on the connection. iPad will automatically search for a Bluetooth-enable device.



Step 5: Bluetooth keyboard found. Click on the device to connect.



Step 6: Enter the password code as displayed on screen.



Step 7: Bluetooth keyboard connected successfully.[power]indicator light will stay on until the keyboard is switched off.



Special Note:

The Bluetooth keyboard can be connected to iPhone 3G, 3GS, 4G and iPod Touch That had installed iOS4.0 or later. For other Bluetooth enabled device, please verify the bluetooth standard & compatibility before attempting to connect to the keyboard.

4.0 Charging

When the battery power is low, the [power] indicator light will start blinking, it is time to recharge the keyboard.

Step 1: Connect USB-B of the native USB power cable to the keyboard charging interface

Step 2: Connect USB-A to the power adaptor or computer's USB interface

Step 3: The [charge] red indicator light will stay on when the keyboard is charging. Once it finished charging the [charge] indicator light will turn off.

5.0 Energy Saving Sleep mode

The keyboard will kick into sleep mode when it is inactive for 15 minutes, and the keyboard [power] indicator or light will go off. To activate from sleep mode, just press any key and wait 3 seconds, the keyboard will come back on.

6.0 Portable Power Bank and Mobile Power Specifications:

1. Batteries type: Lithium Polymer Battery

2. Capacity: 2000mAh 7.4V

3. Rated input: Micro USB 5V/1.5A

4. Rated output: USBOUT 5V/2A

5. Charging time: About 4 hours

6. Usage temperature: -5° C ~ 45° C

7. Static power consumption: Below 400uA

: 8. High Capacity

Ultra high capacity 500mAh offers super power to your iPad, iPhone and other 5V digital devices.

9. Long life performance

Up to 500 times rechargeable use.

6.0 Safety Caution

- 1.Keep the item away from sharp objects.
- 2.Do not place heavy object on top of the keyboard
- 3.Do not microwave the item
- 4.Do not force or distorted the keyboard.
- 5.Keep away from oil, chemical or any other organic liquid.

7.0 Cleaning

Clean the silicone keyboard with water,alcohol or cohol based disinfectant.

8.0 Troubleshooting

(A) Unable to connect

- 1.Make sure the power switch is on..
- 2.Make sure the keyboard is within the operating distance.
- 3.Make sure the battery is charged.
- 4.Make sure iPad bluetooth setting is on.
- 5.Make sure Bluetooth keyboard is connected to iPad.
- 6.Make sure Bluetooth keyboard has been paired with the iPad.

(B) Unable to charge keyboard

- 1.Make sure the USB power cable is connected properly to the keyboard and the power source.
- 2.Make sure the wall charger is plug into the power outlet.

FCC Caution: Any changes or modifications not expressly approved by the party responsible for compliance could void the user's authority to operate this equipment.

This device complies with Part 15 of the FCC Rules. Operation is subject to the following two conditions: (1) This device may not cause harmful interference, and (2) this device must accept any interference received, including interference that may cause undesired operation.

NOTE: This equipment has been tested and found to comply with the limits for a Class B digital device, pursuant to Part 15 of the FCC Rules.

These limits are designed to provide reasonable protection against harmful interference in a residential installation. This equipment generates, uses and can radiate radio frequency energy and, if not installed and used in accordance with the instructions, may cause harmful interference to radio communications.

However, there is no guarantee that interference will not occur in a particular installation.

If this equipment does cause harmful interference to radio or television reception, which can be determined by turning the equipment off and on, the user is encouraged to try to correct the interference by one or more of the following measures:

- Reorient or relocate the receiving antenna.
- Increase the separation between the equipment and receiver.
- Connect the equipment into an outlet on a circuit different from that to which the receiver is connected.
- Consult the dealer or an experienced radio/TV technician for help.

The device has been evaluated to meet general RF exposure requirement.

The device can be used in portable exposure condition without restriction.