

Wireless Chime

USER MANUAL



W
WASSERSTEIN


made for
Google Nest

Overview

The Wasserstein Wireless Chime gives you a custom wireless alert system for your Google Nest Doorbell (battery and Google Nest Doorbell (wired), and features seven pre-loaded tunes and four LED colors to choose from.

In the Box



1 x wireless chime



1 x wired transmitter



1 x USB power adapter
with 4 universal plugs



1 x back cover pin



1 x spade connector
cable (3.3 ft)



1 x wire connector



1 x tinned cable
(0.3 ft)



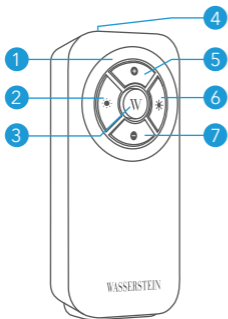
2 x 3*20 mm
screws

Safety Information

Read carefully before installing:

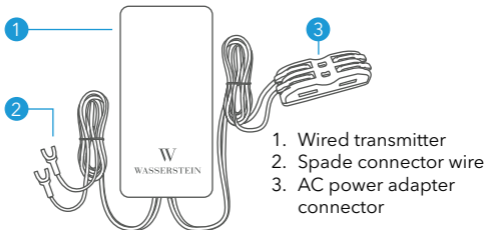
- Always wear suitable protective gear (e.g. safety goggles) when drilling holes, etc.
- Before drilling holes in walls, check for electricity cables and water pipes.
- Shut off the power to the doorbell transformer before you attempt to connect or remove it. Locate and shut off the circuit breaker switch of your home's main electricity supply.
- Before touching any wires, use a voltage sensor to check that the power is actually off - the sensor will alert you if the wires are still live.

Understanding the Wireless Chime



1. Halo LED / notification
2. LED dimmer
3. Tune selection
4. Ambient light sensor
5. Volume up
6. LED brighter
7. Volume down

Understanding the Wired Transmitter

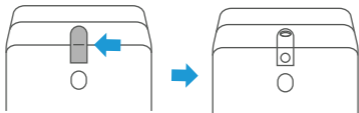


Installation

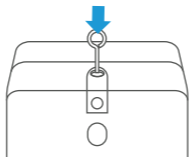
Installing the Doorbell Transmitter

Choose a location that's nowhere near a heat or water source, and that won't be hit when opening the door.

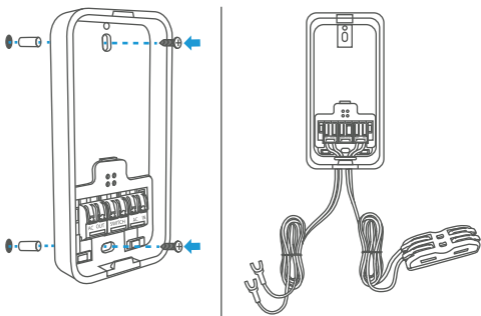
1. Remove the silicone stopper from the top of the transmitter.



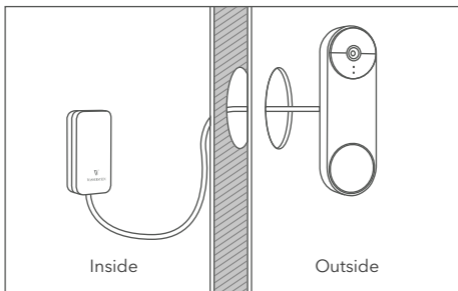
2. Use a pin to press the notch and remove the back cover.



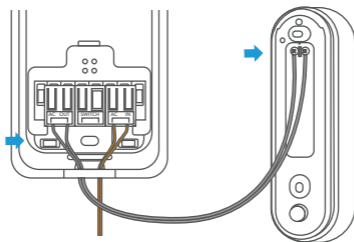
3. Screw the transmitter back cover onto the wall using 2 screws (3 x 20 mm) if necessary.



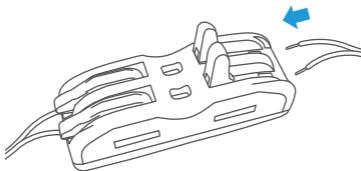
Note: It is recommended that the transmitter be placed under a covered area or inside the house at the height between 4.5 ft to 6.0 ft.



4. Connect the spade connector to the back of the Nest Doorbell.



5. Connect the AC power terminals to the AC power adapter connector (there is no polarization).

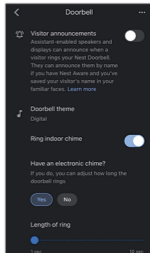
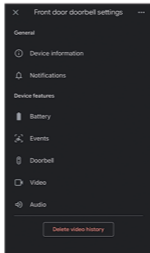
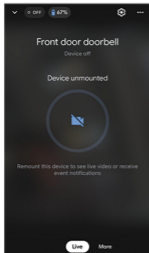


Note: Transmitter is powered by 16-24 VAC AC adapter, the AC adapter needs to meet the safety standard requirements of IEC 62368-1, and the output power needs to meet the PS2 level. Please see page 9 for wire stripping instruction if the adapter comes with spade connectors.

6. Follow instructions on the Google Home APP to set up the chime type for your Nest Doorbell (battery) or Nest Doorbell (wired).

Google Nest Doorbell Setup

1. Make sure the Google Nest Doorbell is connected to Wi-Fi.
2. Go to "**Settings**" by clicking the gear symbol on the top right.



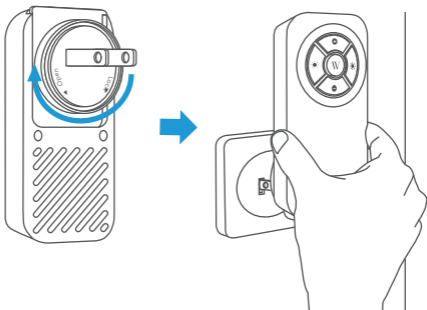
3. Go to "**Doorbell**".
4. Make sure Ring indoor chime is "**ON**".
5. Press the doorbell and indoor chime will ring.

Note: Google Nest Doorbell might take a minute to update the setting.

6. Confirm the transmitter and receiver is paired.

Installing the Wireless Chime

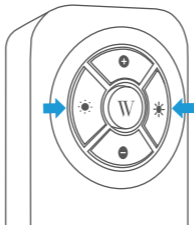
Rotate clockwise until you hear the click to lock the plug in place. Plug the chime into an AC outlet.



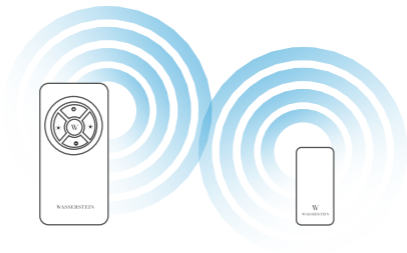
Setup and Operation

Transmitter and Receiver Pairing

1. Press and hold both of the brightness adjustment buttons for 3 sec until the LED is blinking.

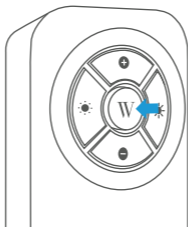


2. Press the doorbell button / smart doorbell.
3. Wireless Chime will be paired with the Wireless Transmitter.



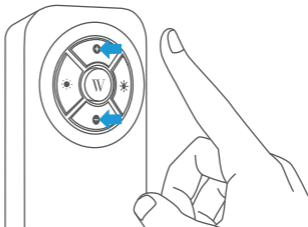
Changing the Tune

Press the center button (Wasserstein logo) to change the doorbell tune. (7 tunes)



Adjusting the Volume

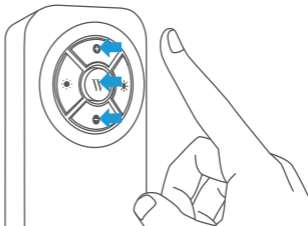
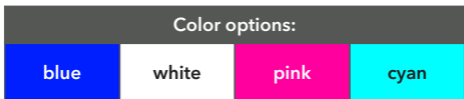
- Press the +/- button to adjust the volume level you want. (6 levels)



- To mute the chime, press the - button until you cannot hear the ring.

Changing the Halo LED Color

Press and hold the both center & volume down buttons to change the halo LED color.



Change the Halo LED Brightness Adjustment

- LED will automatically turn on when the ambient light goes down.
- Press the **+/-** button to adjust the brightness to your preferred level. (7 Levels)
- To turn off halo LED, press the **-** button until the halo LED is off.

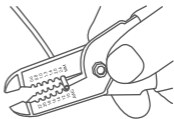
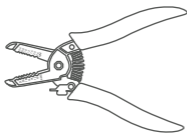
Additional Chime(s)

- You can connect up to 5 wireless chimes with a single transmitter. Simply plug in the additional wireless chime to the wall outlet and follow the pairing instructions.
- Each chime can be set with its own tune and LED color.

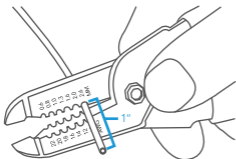
How to strip a wire using a wire stripping tool

CAUTION: Always wear protective gear and use proper tools and techniques to avoid injury.

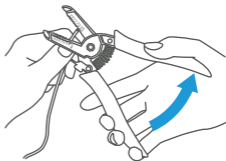
1. Get a wire stripping tool labelled for your type of wire.
2. Find the notch that matches your wire's gauge.



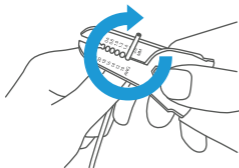
3. Place the tip of the wire in the appropriate notch.



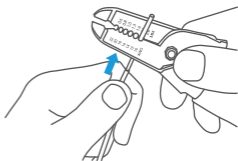
4. Squeeze the stripping tool's handles gently.



5. Spin the tool around the wire to ensure you've cut the insulation.



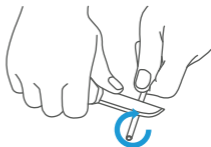
6. Slide the stripper off the wire to pull off the insulation.



How to strip a wire using a utility knife

Note: Use protective gear when using a utility knife.

1. Hold the utility knife so it gently rests on the wire.
2. Roll the wire under the blade to score the insulation.



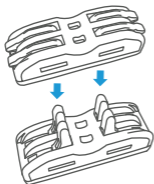
3. Bend the wire at the scored line and break off the insulation.



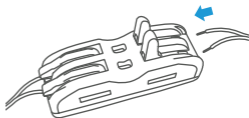
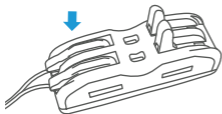
AC Adapter Connector

CAUTION: Always wear protective gear and use proper tools and techniques to avoid injury.

1. Open up the notches on the connector
2. Insert the tinned cable into one side.
(There is no polarity)

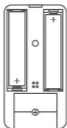


3. Close the notches on the connector and make sure the cable is tightly clamped.
4. Insert the AC power adapter cable to the other end and repeat step 3.



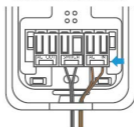
There are two power options:

Option 1: 2 x AAA batteries



or

Option 2: 16-24V
power adapter
connected to AC IN terminal



Battery warning

CAUTION: Risk of fire or explosion if the battery is replaced by an incorrect type.

WARNING:

- replacement of a battery with an incorrect type may defeat a safeguard;
- disposal of a battery into fire or a hot oven, or mechanically crushing or cutting of a battery, may result in an explosion;
- leaving a battery in an extremely high temperature surrounding environment, such as sunshine, fire, or hot surface may result in an explosion or the leakage of flammable liquid or gas;
- a battery subjected to extremely low air pressure may result in an explosion or the leakage of flammable liquid or gas.

FCC Caution

This device complies with part 15 of the FCC Rules. Operation is subject to the following two conditions:

1. This device may not cause harmful interference, and
2. This device must accept any interference received, including interference that may cause undesired operation.

Any Changes or modifications not expressly approved by the party responsible for compliance could void the user's authority to operate the equipment.

Note: This equipment has been tested and found to comply with the limits for a Class B digital device, pursuant to part 15 of the FCC Rules. These limits are designed to provide reasonable protection against harmful interference in a residential installation. This equipment generates uses and can radiate radio frequency energy and, if not installed and used in accordance with the instructions, may cause harmful interference to radio communications.

However, there is no guarantee that interference will not occur in a particular installation. If this equipment does cause harmful interference to radio or television reception, which can be determined by turning the equipment off and on, the user is encouraged to try to correct the interference by one or more of the following measures:

1. Reorient or relocate the receiving antenna.
2. Increase the separation between the equipment and receiver.
3. Connect the equipment into an outlet on a circuit different from that to which the receiver is connected.
4. Consult the dealer or an experienced radio / TV technician for help.

RF Warning for Mobile Device

This equipment complies with FCC radiation exposure limits set forth for an uncontrolled environment. This equipment should be installed and operated with minimum distance 20cm between the radiator & your body.

IC Caution

RSS-Gen Issue 5 April 2018 & CNR-Gen 5e édition Avril 2018

English:

This device contains licence-exempt transmitter(s)/receiver(s) that comply with Innovation, Science and Economic Development Canada's licence-exempt RSS(s). Operation is subject to the following two conditions:

- (1) This device may not cause interference.
- (2) This device must accept any interference, including interference that may cause undesired operation of the device.

RF Warning for Mobile Device

This equipment complies with IC radiation exposure limits set forth for an uncontrolled environment. This equipment should be installed and operated with minimum distance 20cm between the radiator & your body.

French:

L'émetteur/récepteur exempt de licence contenu dans le présent appareil est conforme aux CNR d'Innovation, Sciences et Développement économique Canada applicables aux appareils radio exempts de licence. L'exploitation est autorisée aux deux conditions suivantes :

- 1.L'appareil ne doit pas produire de brouillage;
- 2.L'appareil doit accepter tout brouillage radioélectrique subi,même si le brouillage est susceptible d'en compromettre le fonctionnement.

Avertissement RF pour appareil Mobile

Cet équipement est conforme aux limites d'exposition au rayonnement IC Partez pour un environnement incontrôlé.

Cet équipement Devrait être installé et exploité avec une distance minimale 20cm entre le radiateur et votre corps.

Specifications

Wired Transmitter

Product Dimension: 3.15 x 1.57 x 0.85 in

Product Weight: 1.5 oz

Material: ABS plastic

Power in: 16 - 24 VAC,

Class 2 transformer

RF frequency: 433 MHz

Wireless range: 650 ft

Operating Temperature: 32 °F to 104 °F

Pair max wireless chimes: 5 wireless chimes

Wireless Chime

Product dimension: 5.08 x 2.36 x 1.39 in

Product weight: 5.0 oz

Material: ABS plastic

Power supply: USB power adapter

Power input: 100-240 VAC 50/60 Hz

Power output: 5 V \equiv 1 A

RF frequency: 433 MHz

Wireless range: 650 ft

Operating Temperature: 32 °F to 104 °F

Chime tunes: 7 tunes

Chime volume: 6 levels

Sound Level: mute to 110 dB

LED Night Light Brightness: 7 levels

LED Colors: white / blue / pink / cyan

Operating ambient temperature: 0 - 40°C

Storage and transportation ambient temperature: -20 - 60°C

Altitude not higher than 5000m

Get More Support

Scan the QR code below or email us at contact@wasserstein-home.com.



This product has been certified by Wasserstein to meet Google's compatibility standards. Google is not responsible for the operation of this product or its compliance with any applicable safety or other requirements.

Learn more at g.co/madeforgoogle

Google Nest Doorbell (battery) & Nest Doorbell (wired) is not included. Google Nest Doorbell (battery), Nest Doorbell (wired) Google Nest, Google, Google logo, related marks and logos are trademarks of Google LLC. Wasserstein is not affiliated with Google LLC. Wasserstein is a trademark of Droptcases Ltd.

W

WASSERSTEIN

www.wasserstein-home.com

Made in China