

#01_Bluetooth LE_1Mbps_Horizontal_Up_5mm_Ch0

Communication System: Bluetooth ; Frequency: 2402 MHz;Duty Cycle: 1:1.159

Medium: HSL_2450_230927 Medium parameters used (interpolated): $f = 2402$ MHz; $\sigma = 1.761$ S/m; $\epsilon_r = 40.297$; $\rho = 1000$ kg/m³

Ambient Temperature : 23.2 °C; Liquid Temperature : 22.2 °C

DASY5 Configuration:

- Probe: EX3DV4 - SN3976; ConvF(7.82, 7.82, 7.82) @ 2402 MHz; Calibrated: 2023/2/21
- Sensor-Surface: 1.4mm (Mechanical Surface Detection)
- Electronics: DAE4 Sn316; Calibrated: 2023/1/23
- Phantom: ELI V4.0; Type: QD OVA 001 Bx; Serial: 1168
- Measurement SW: DASY52, Version 52.10 (4);SEMCAD X Version 14.6.14 (7501)

Area Scan (41x61x1): Interpolated grid: dx=1.200 mm, dy=1.200 mm

Maximum value of SAR (interpolated) = 0.114 W/kg

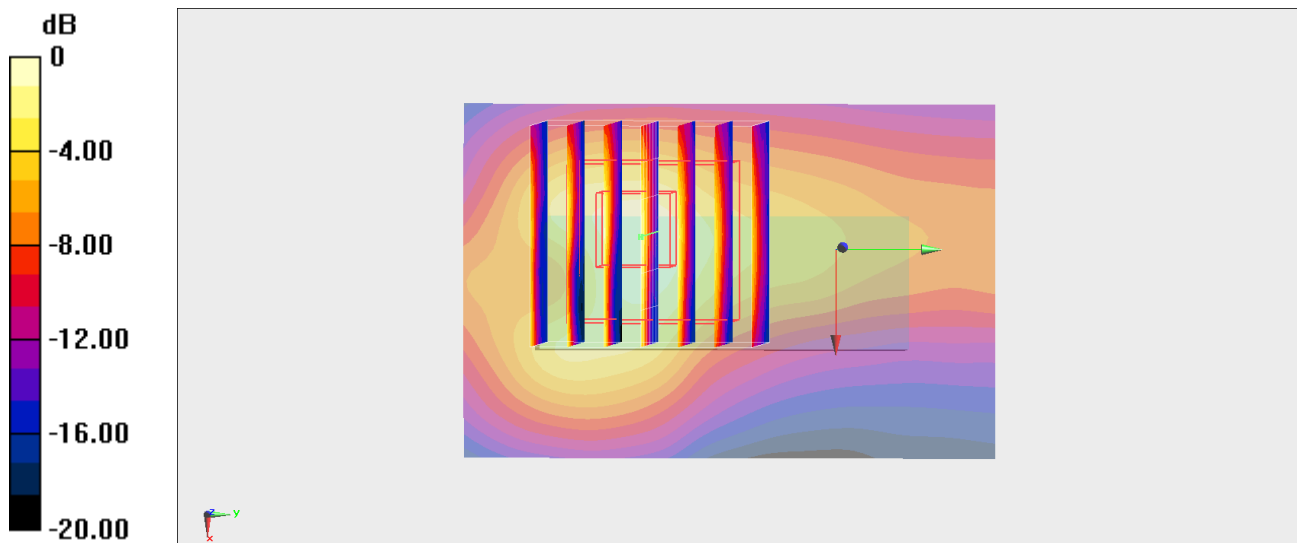
Zoom Scan (7x7x7)/Cube 0: Measurement grid: dx=5mm, dy=5mm, dz=5mm

Reference Value = 8.114 V/m; Power Drift = -0.06 dB

Peak SAR (extrapolated) = 0.167 W/kg

SAR(1 g) = 0.074 W/kg; SAR(10 g) = 0.033 W/kg

Maximum value of SAR (measured) = 0.125 W/kg



0 dB = 0.125 W/kg = -9.03 dBW/kg