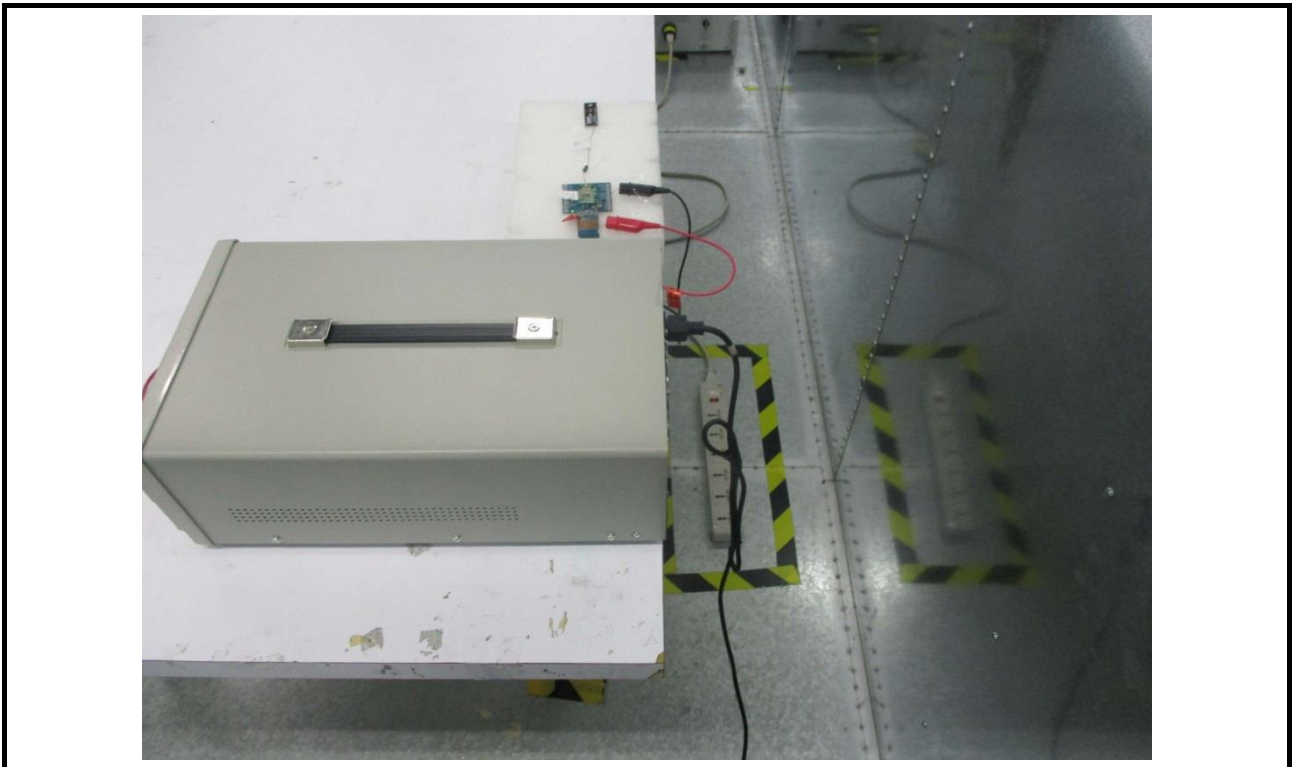
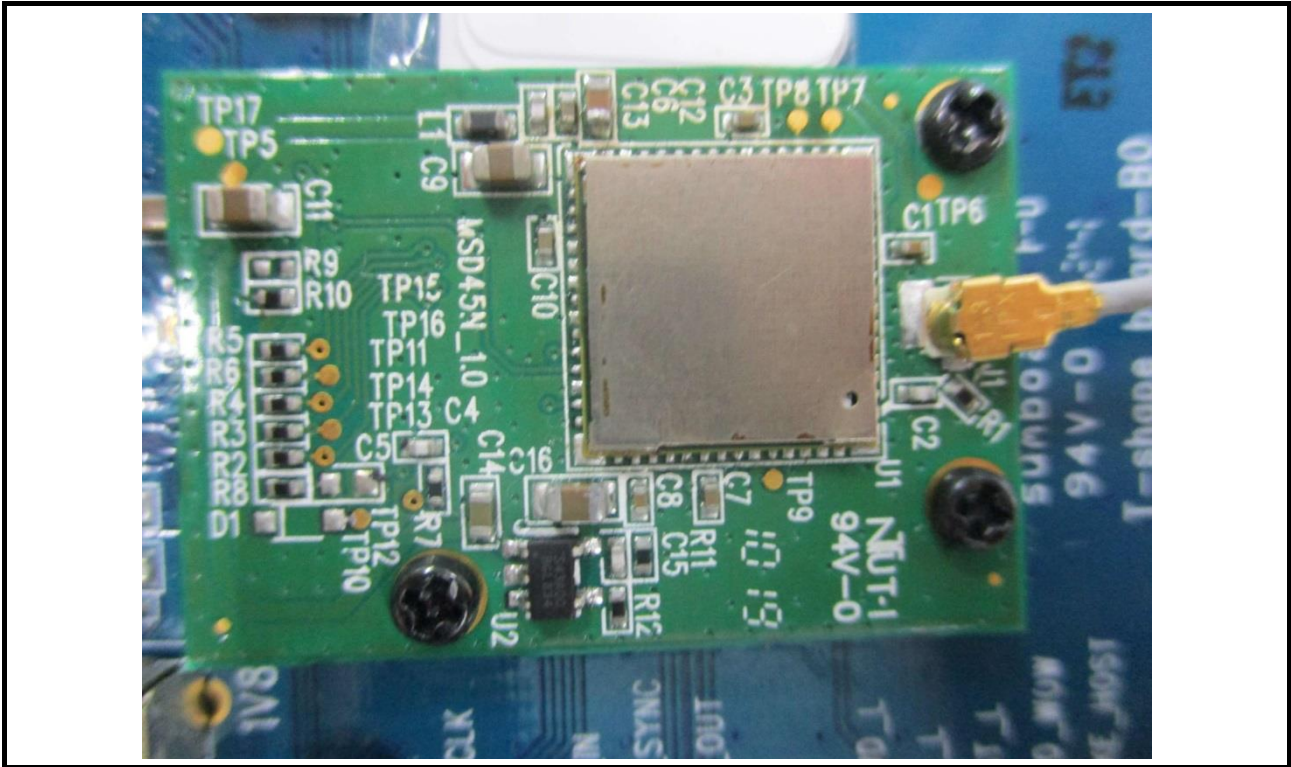


Photographs of the Test Configuration

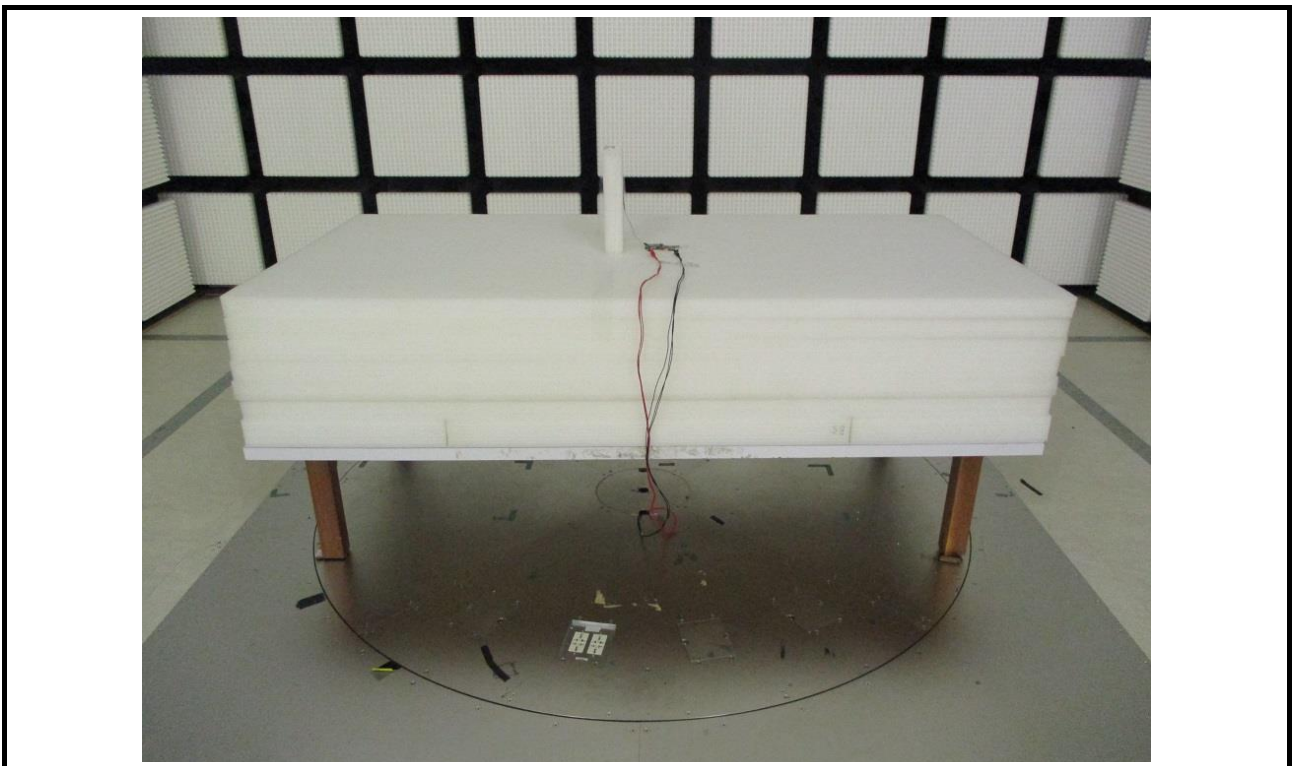
Conducted Emission Test



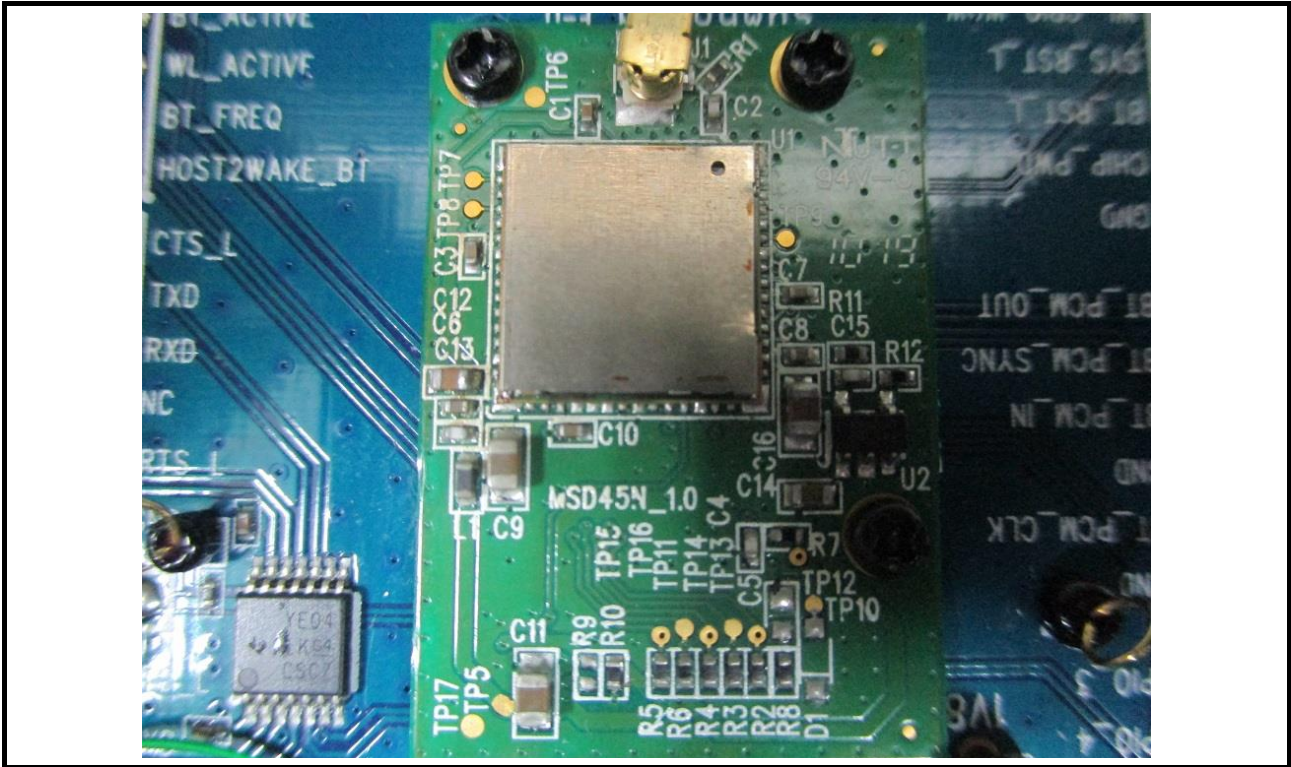
Conducted Emission Test



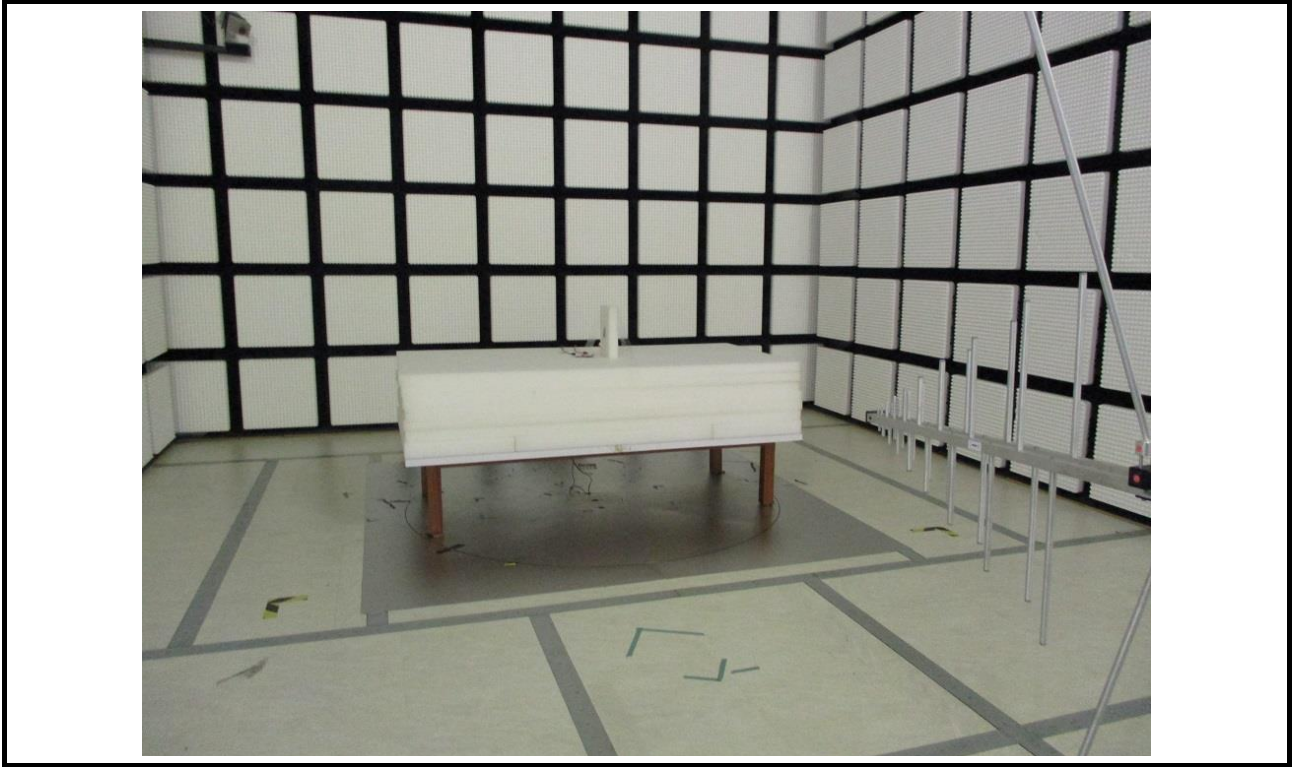
Radiated Emission below Test (Test Configuration 1)



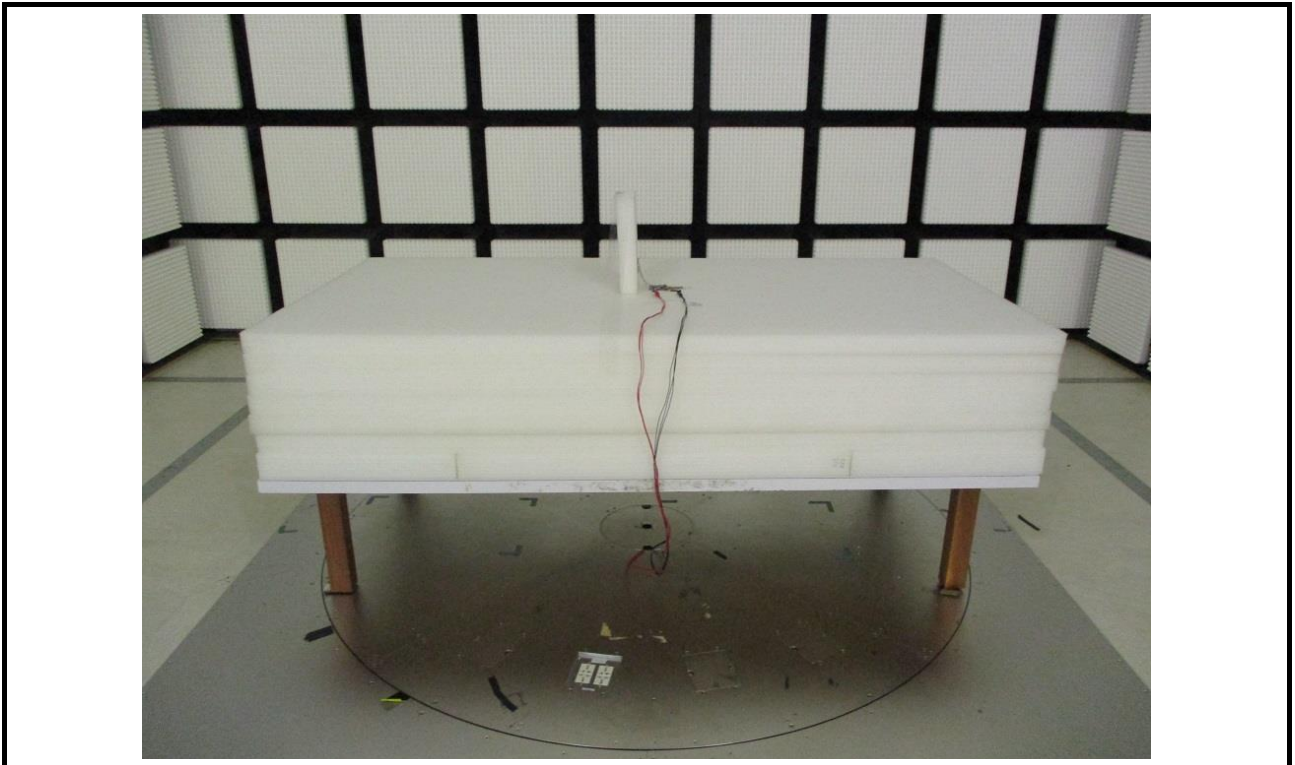
Radiated Emission below Test (Test Configuration 1)



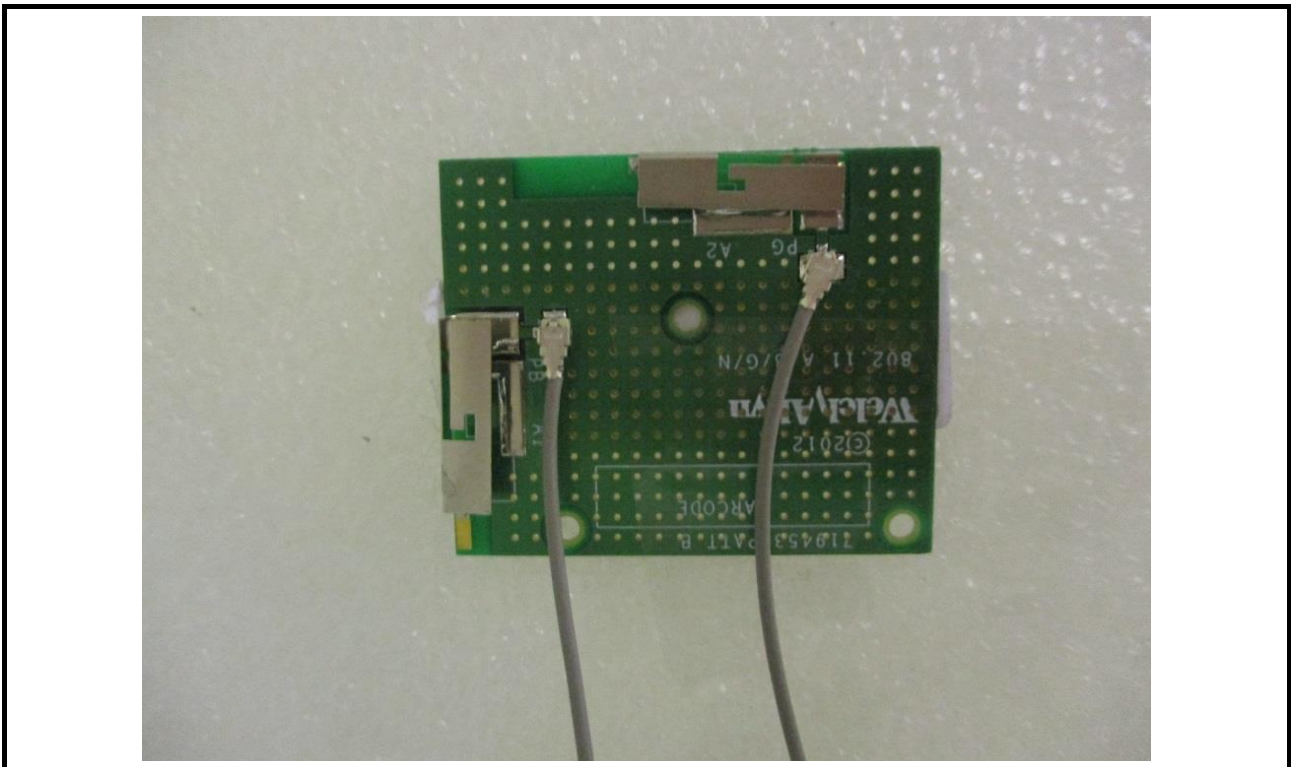
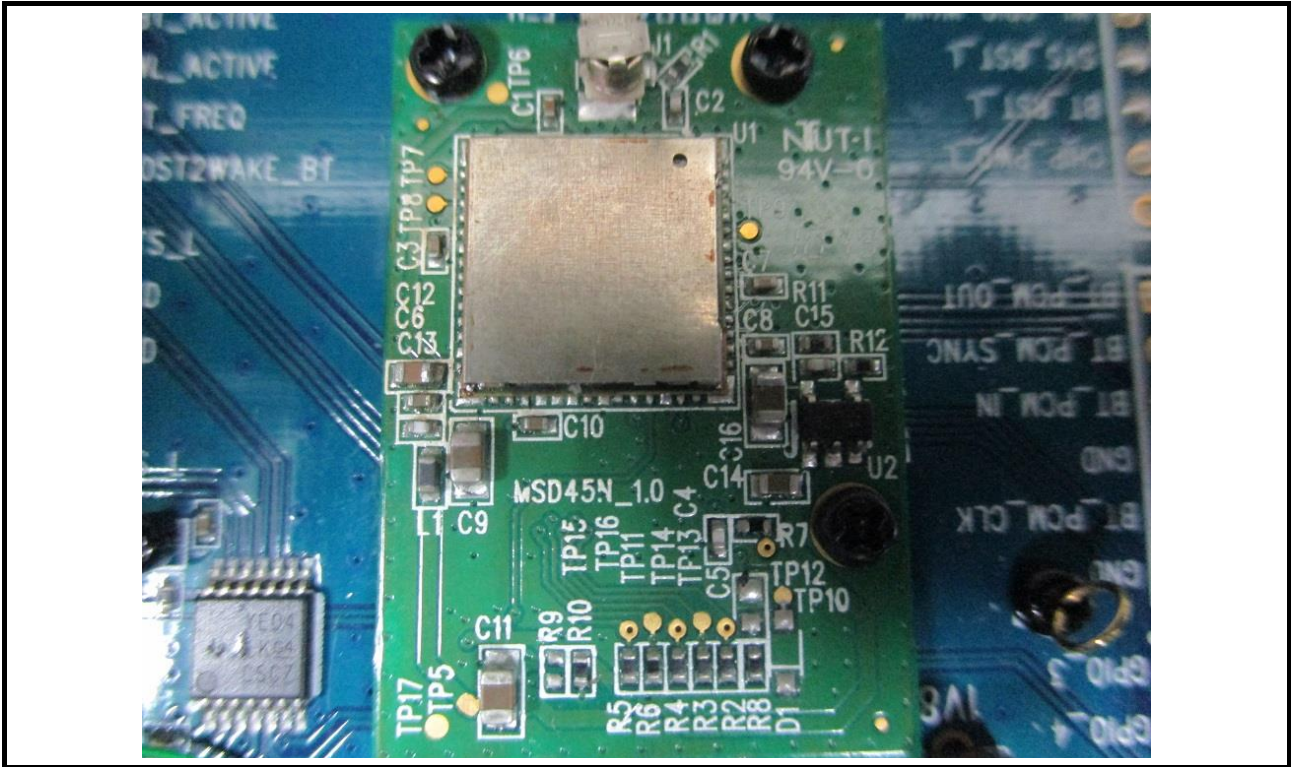
Radiated Emission below Test (Test Configuration 1)



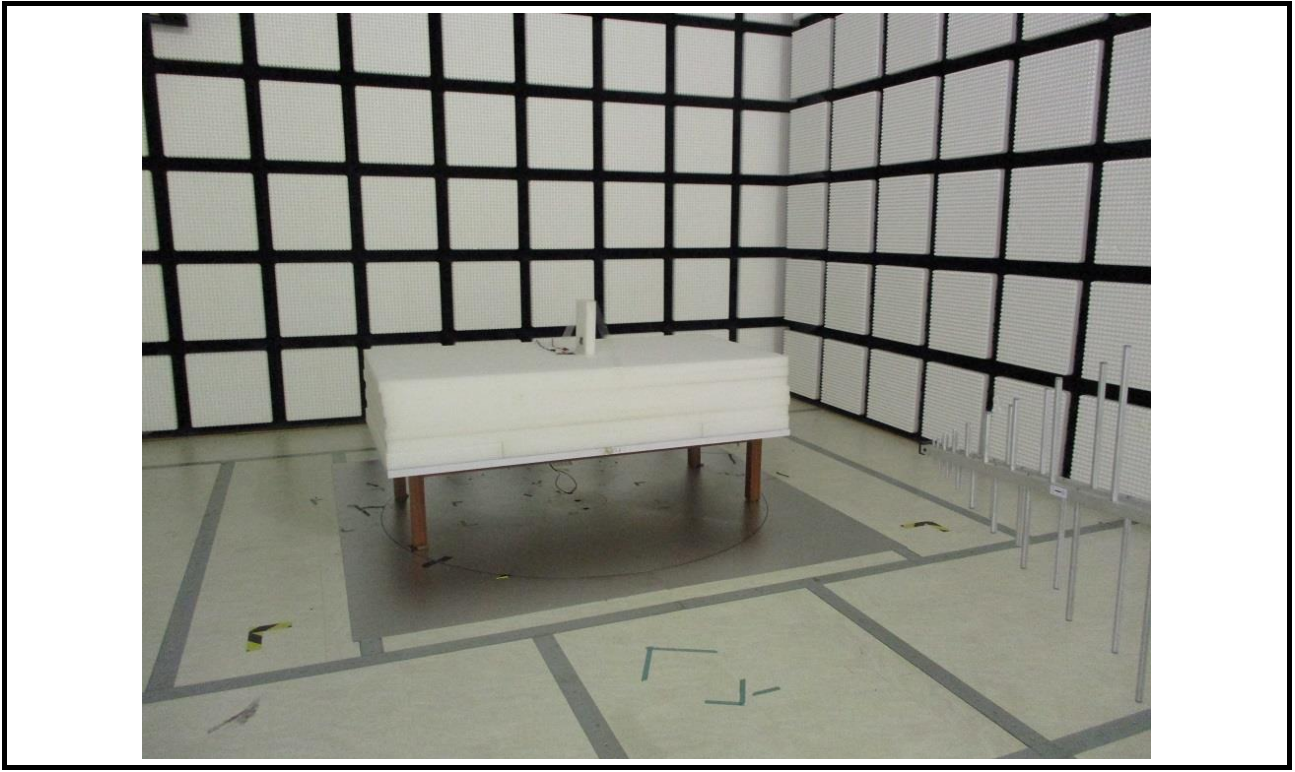
Radiated Emission below Test (Test Configuration 2)



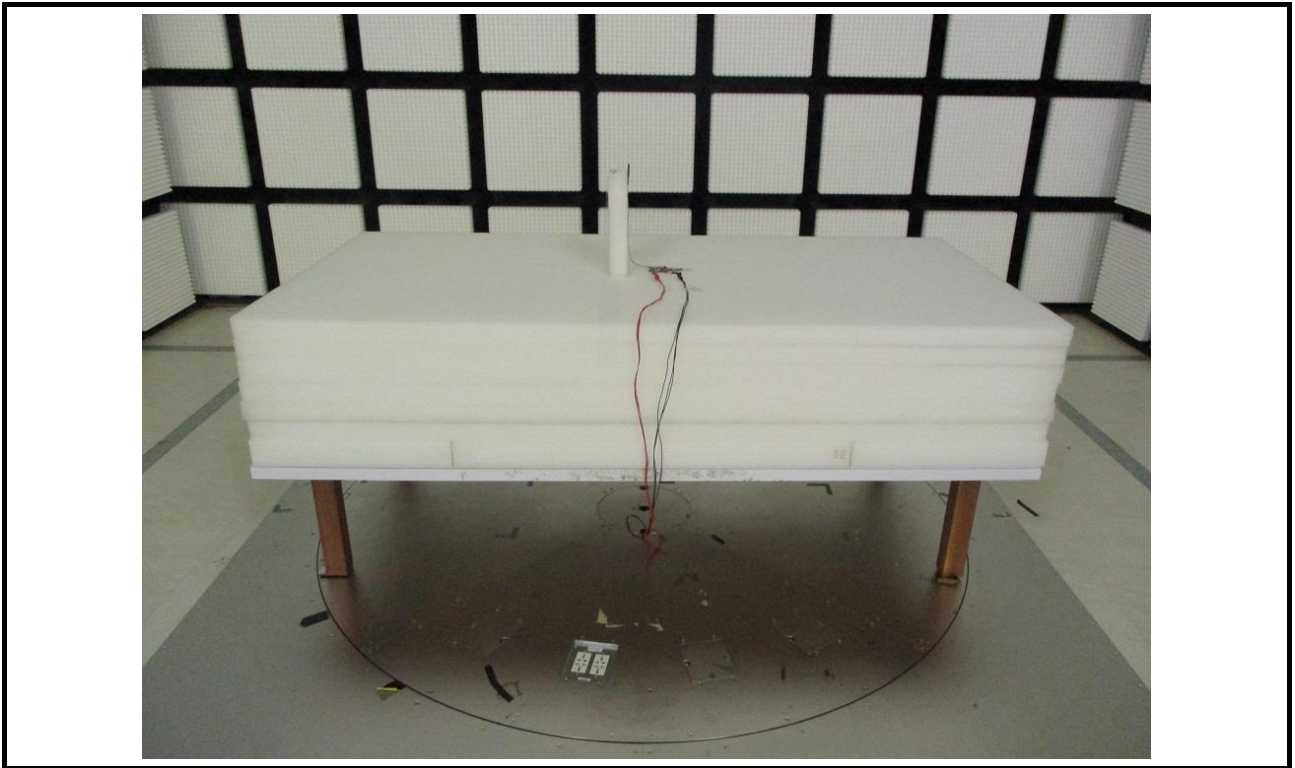
Radiated Emission below Test (Test Configuration 2)



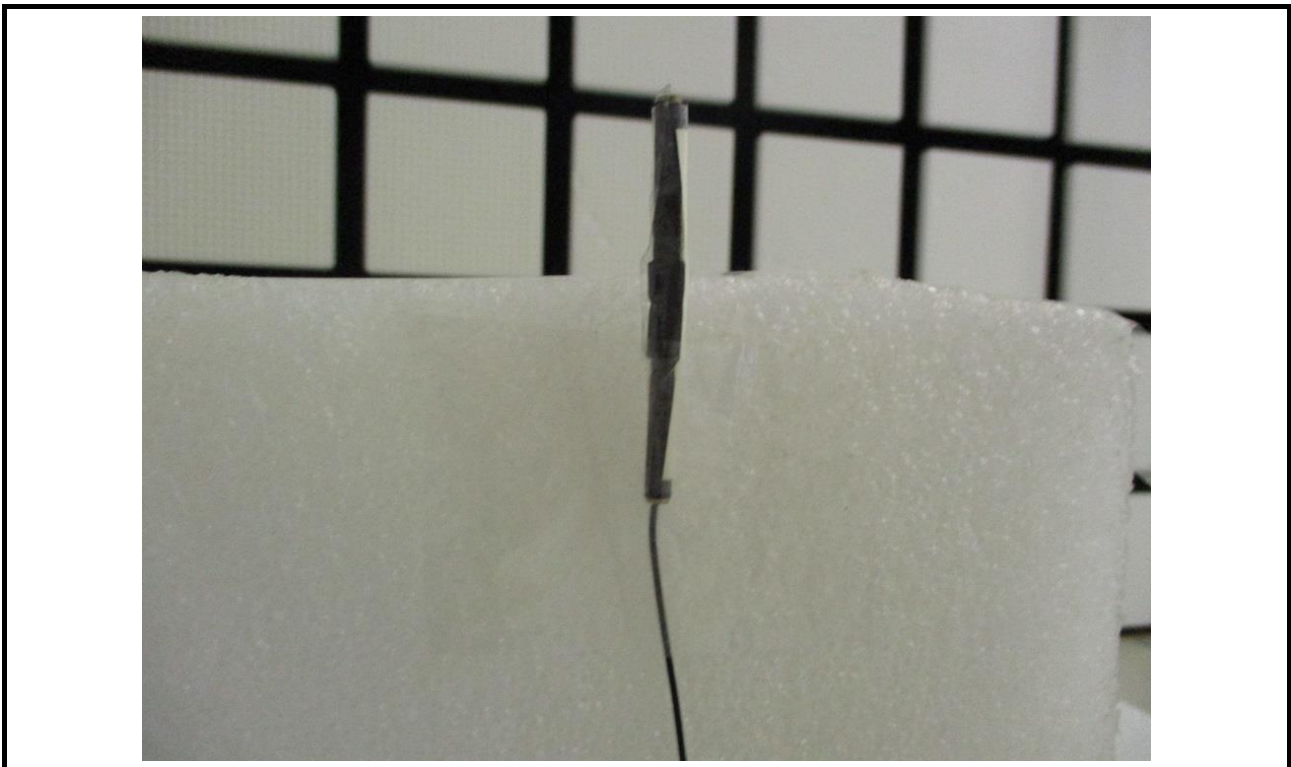
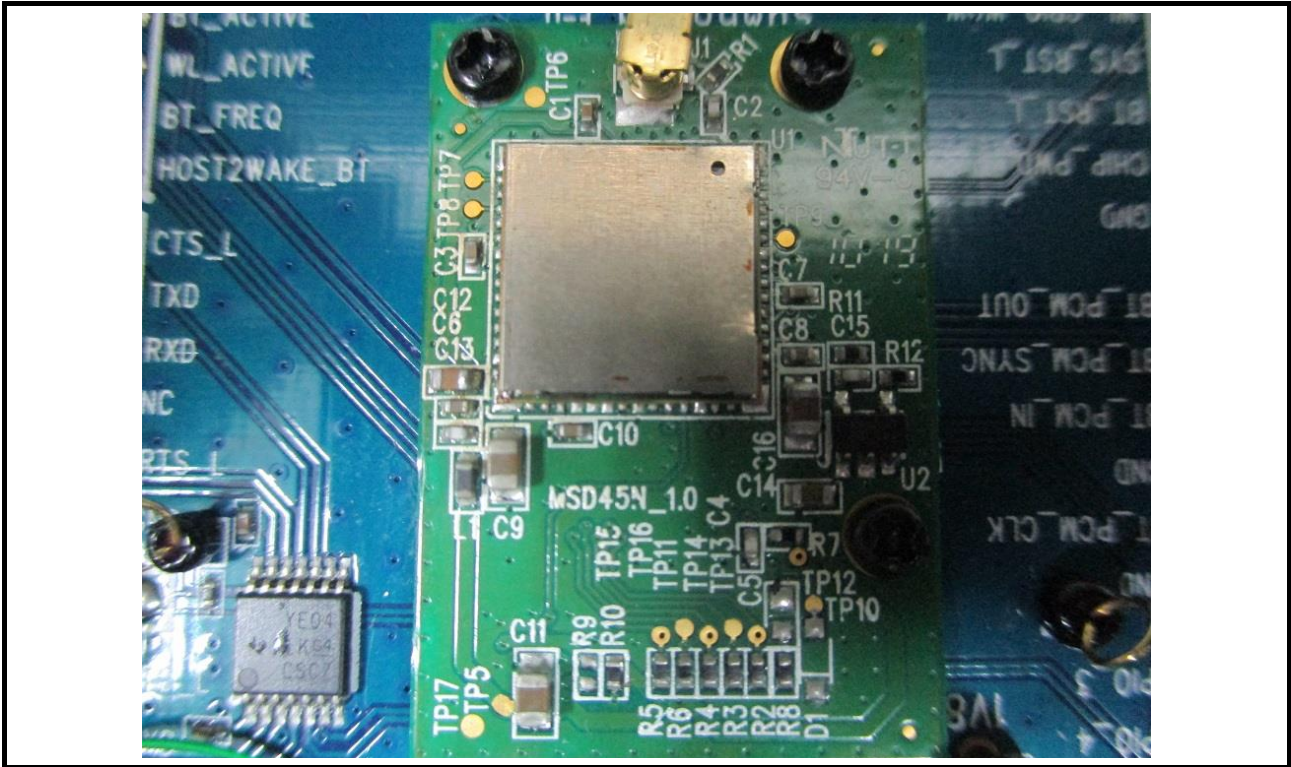
Radiated Emission below Test (Test Configuration 2)



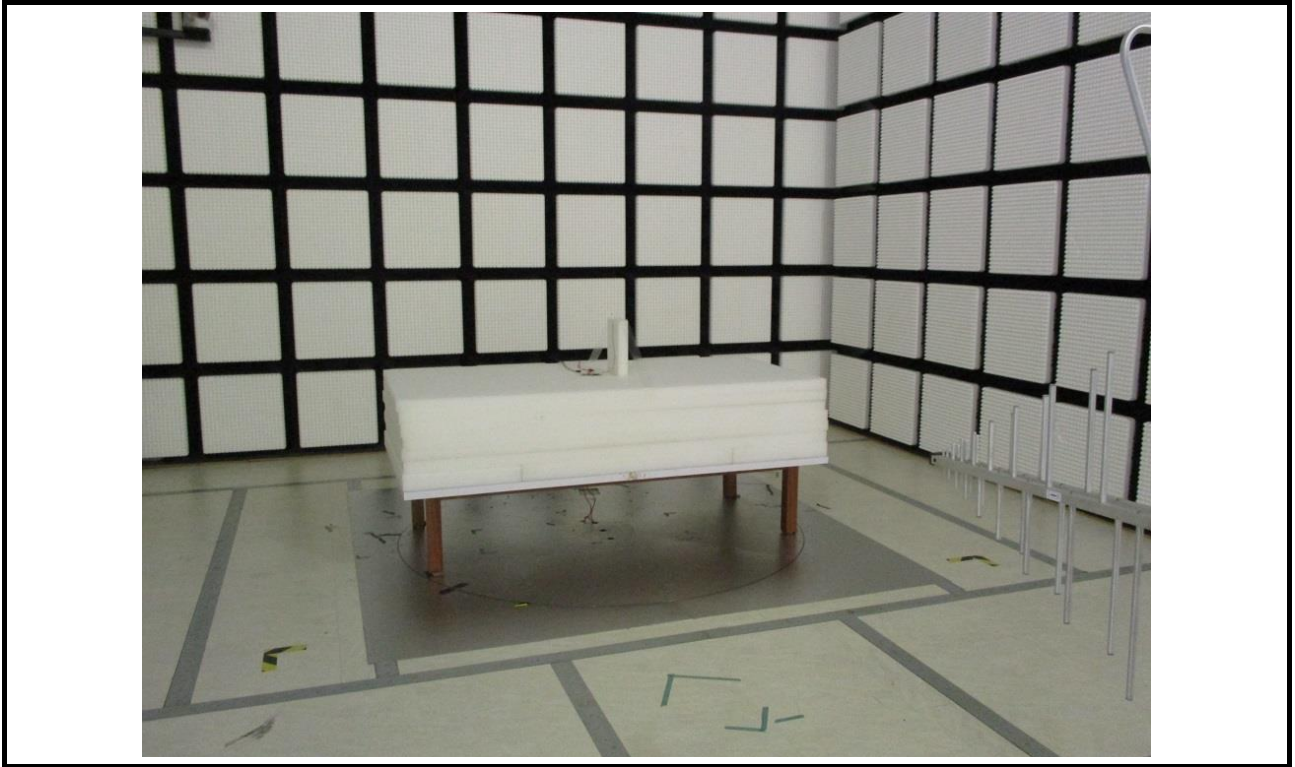
Radiated Emission below Test (Test Configuration 3)



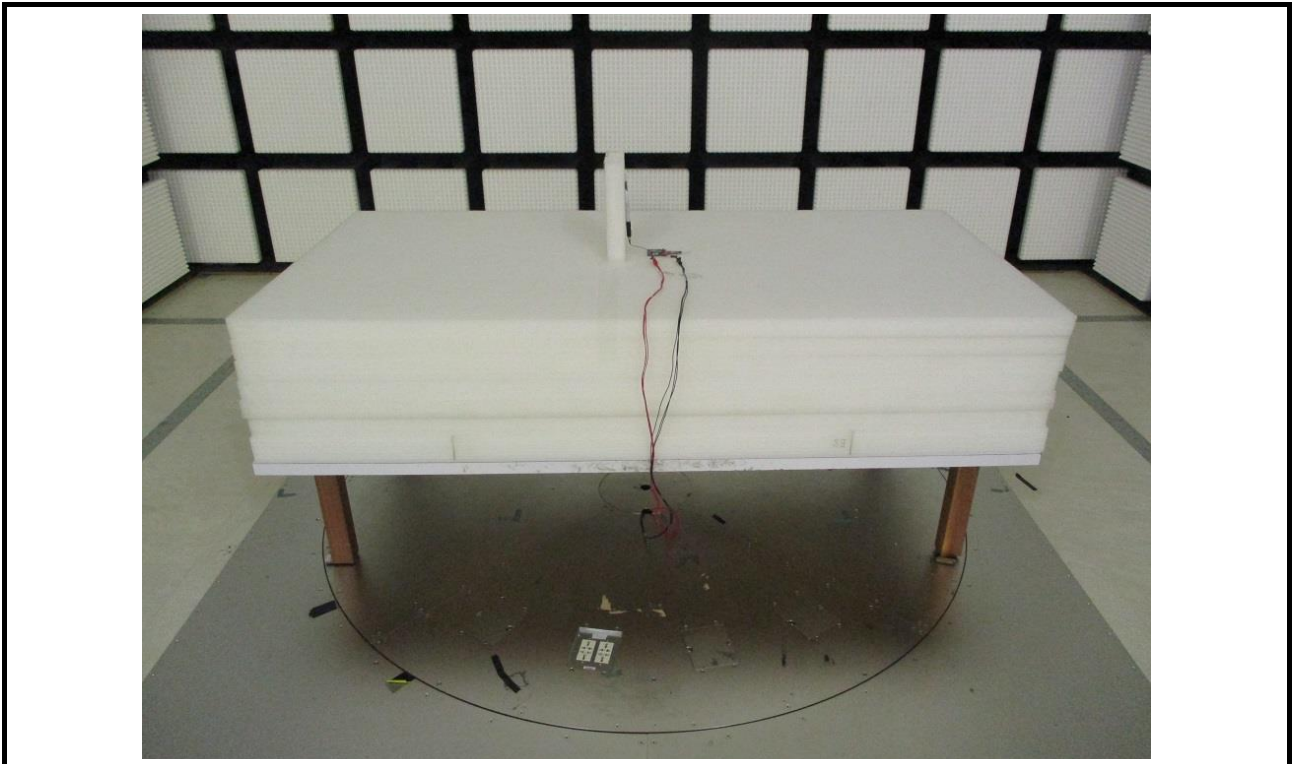
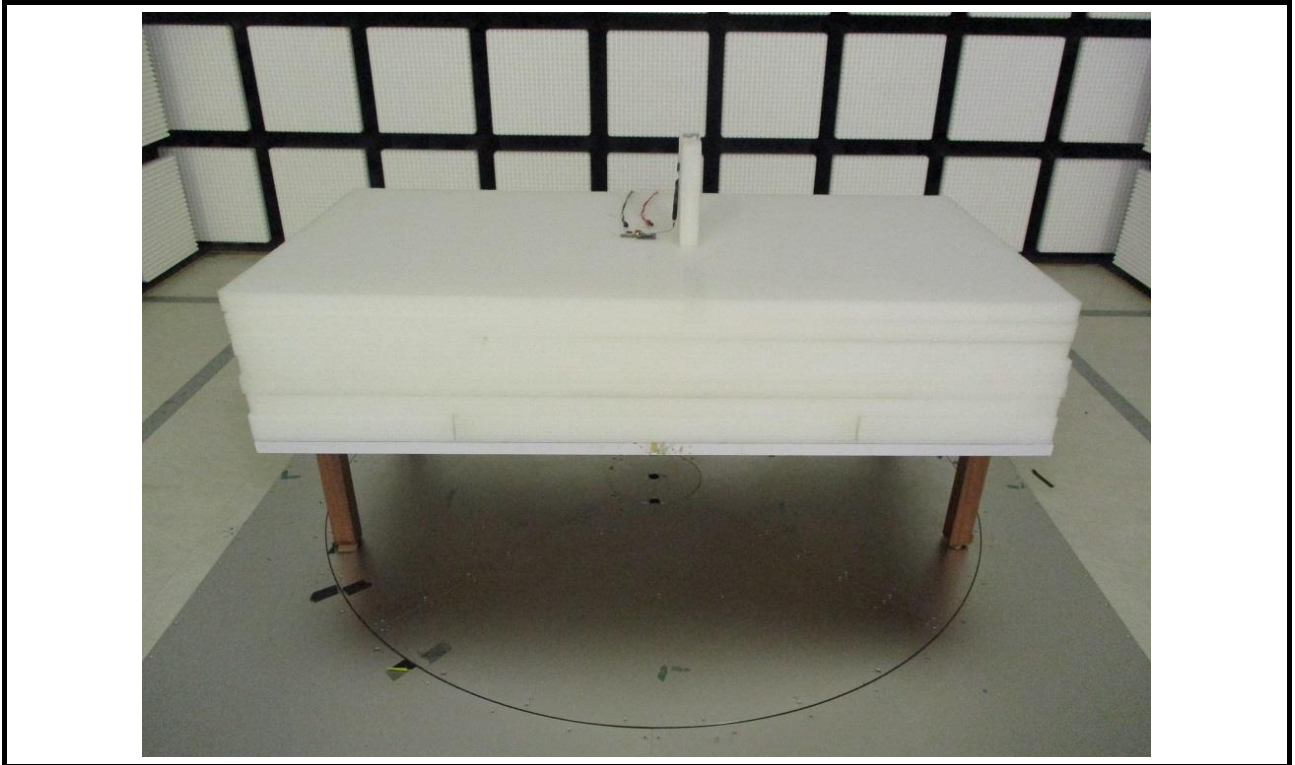
Radiated Emission below Test (Test Configuration 3)



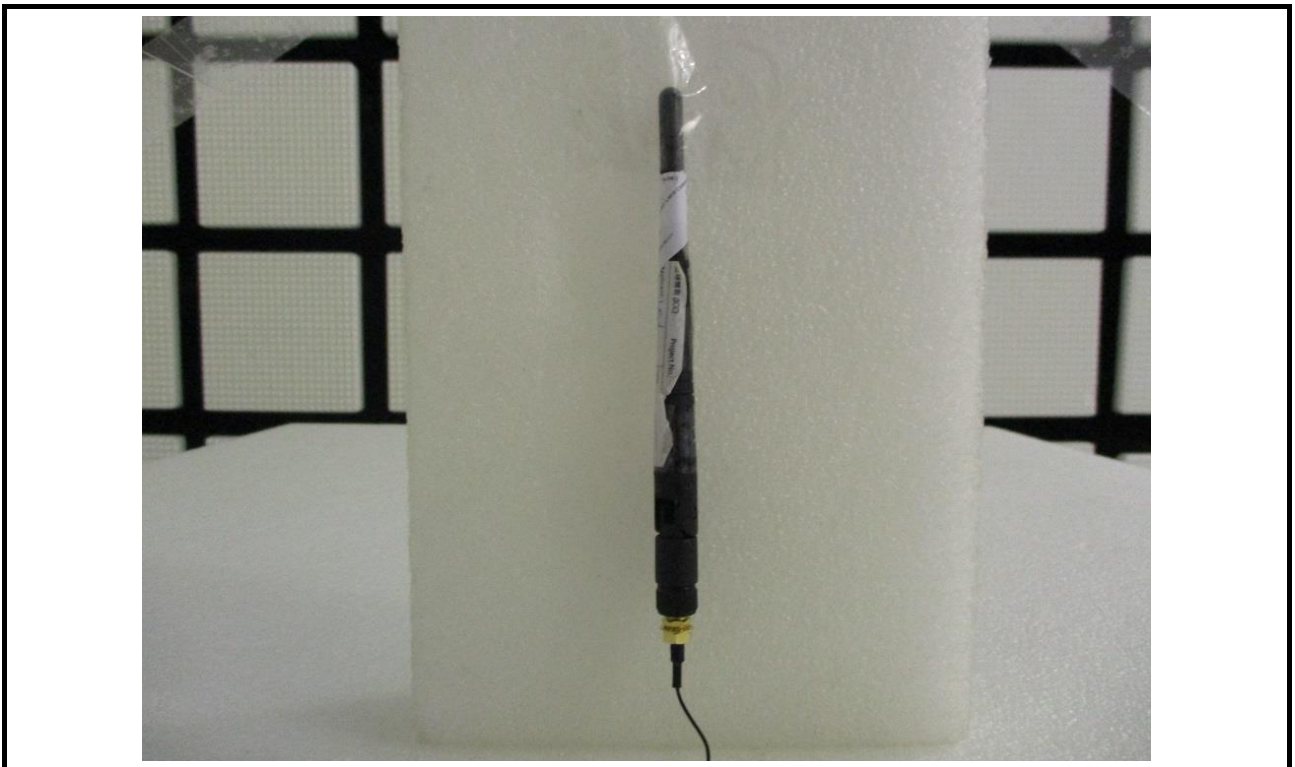
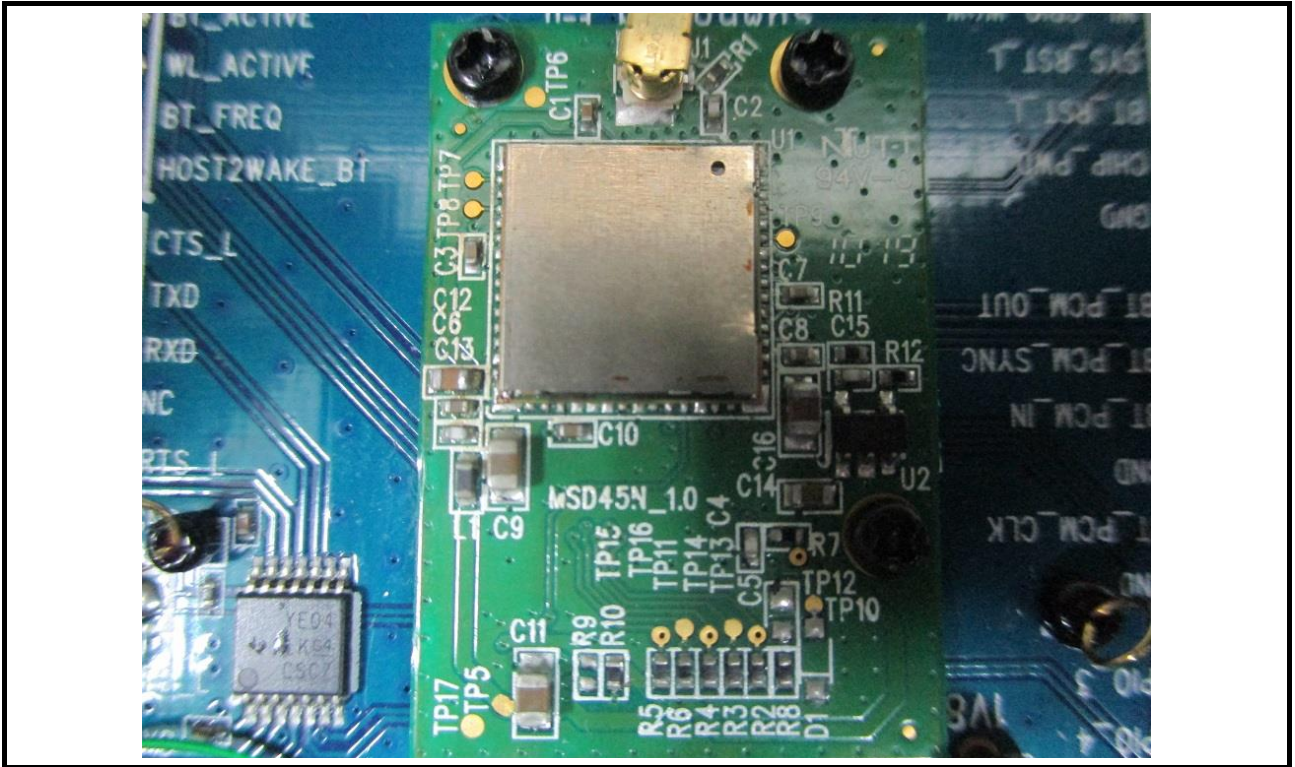
Radiated Emission below Test (Test Configuration 3)



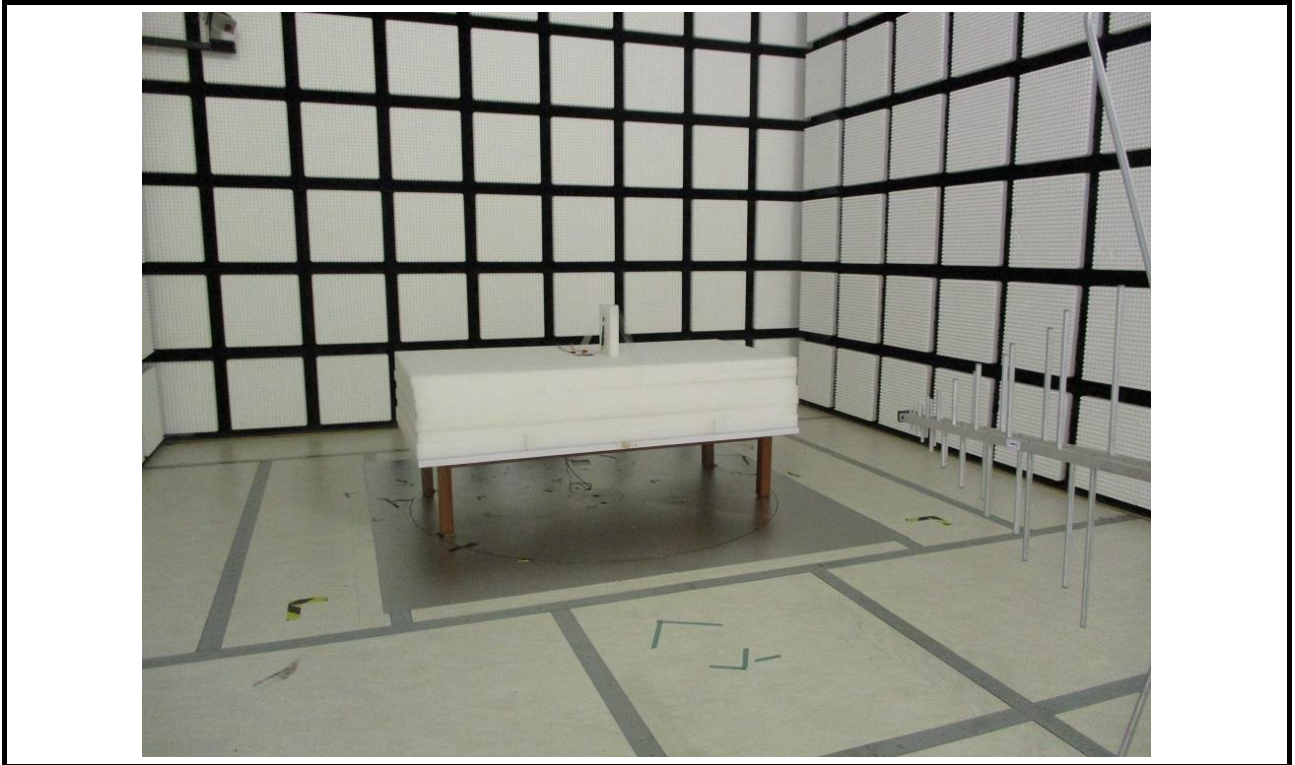
Radiated Emission below Test (Test Configuration 4)



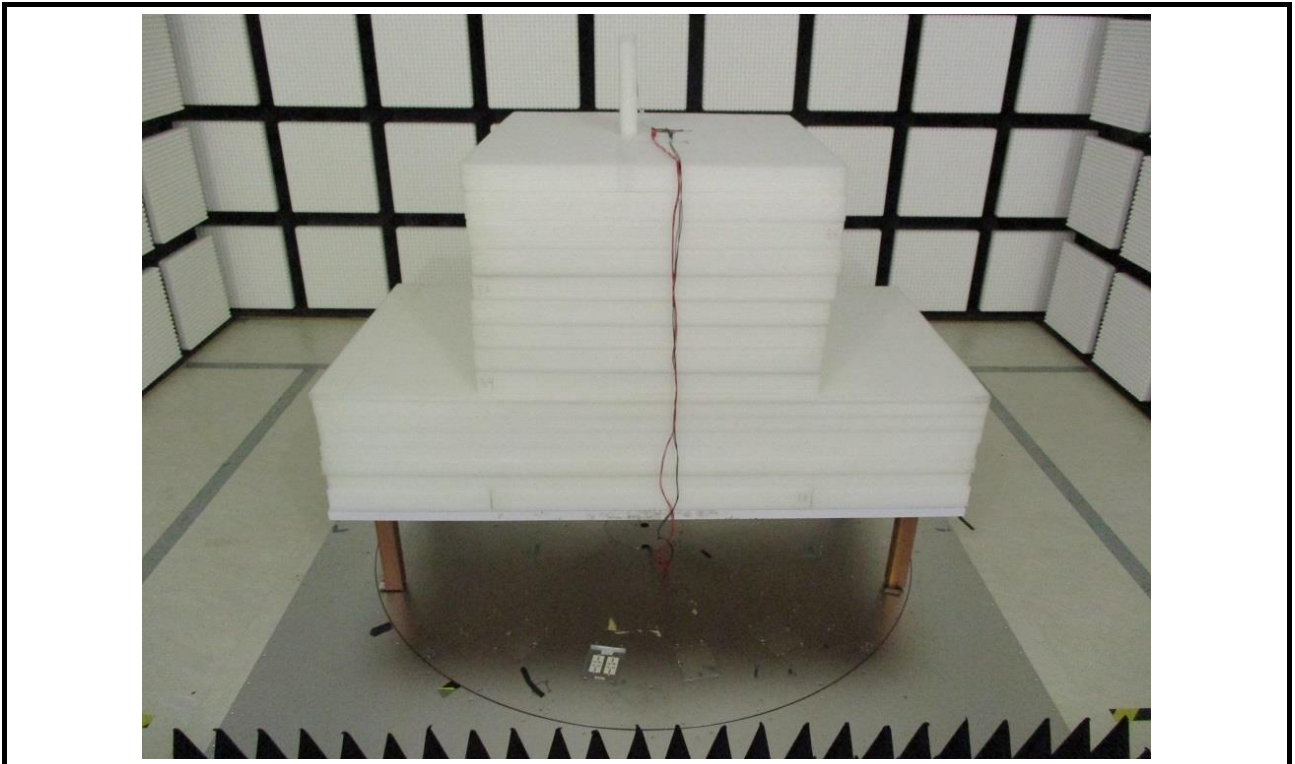
Radiated Emission below Test (Test Configuration 4)



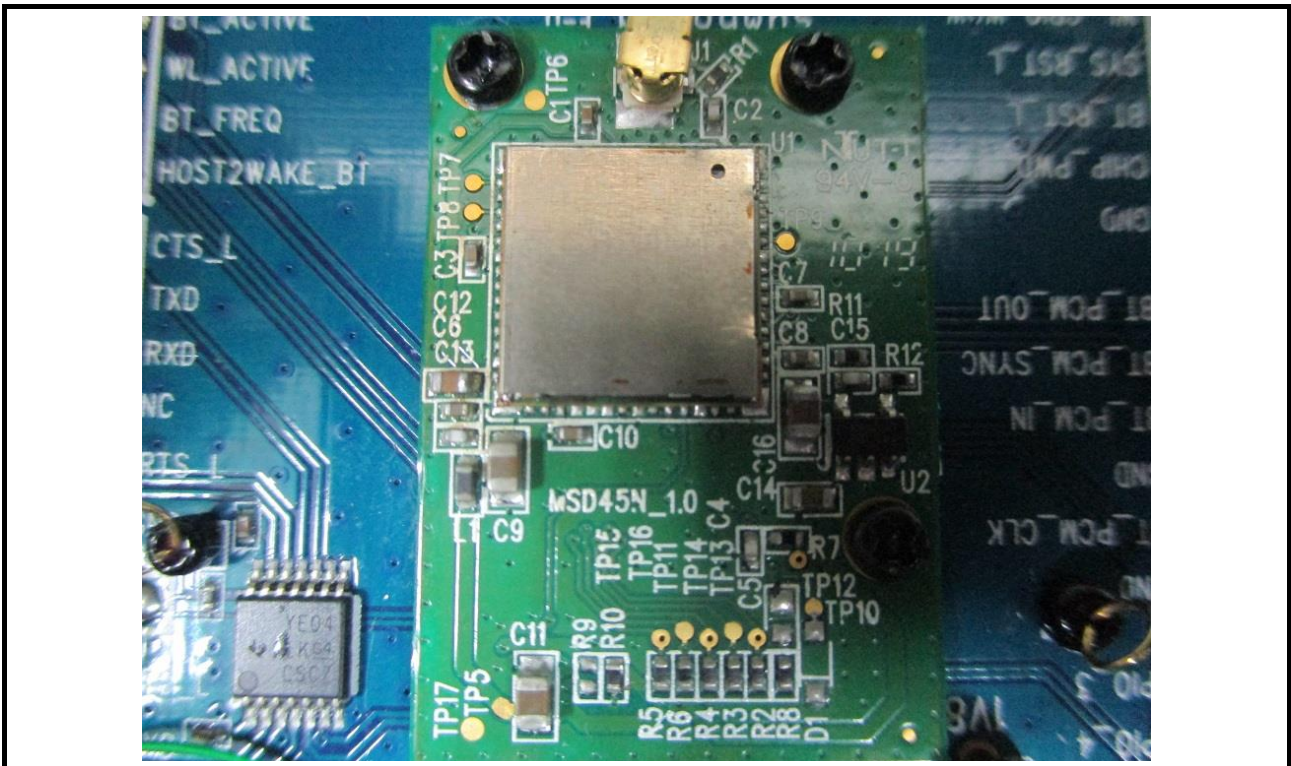
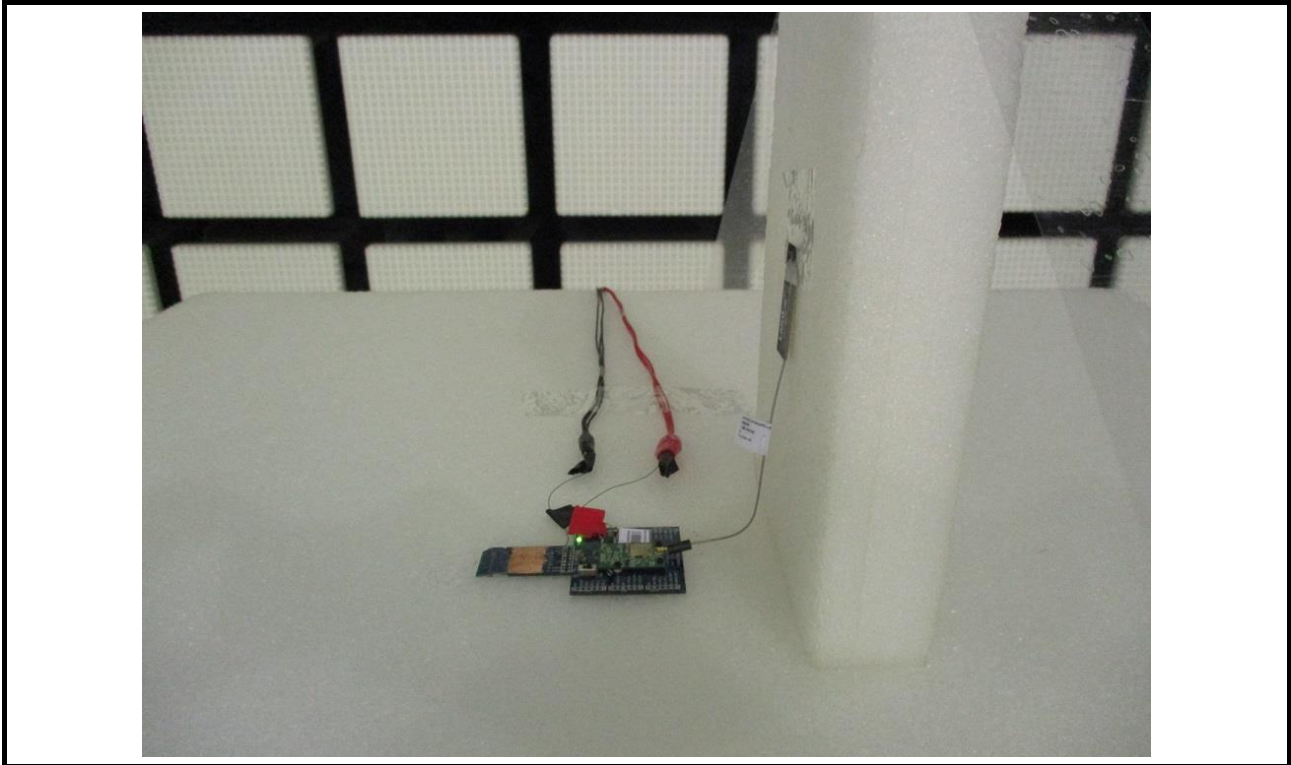
Radiated Emission below Test (Test Configuration 4)



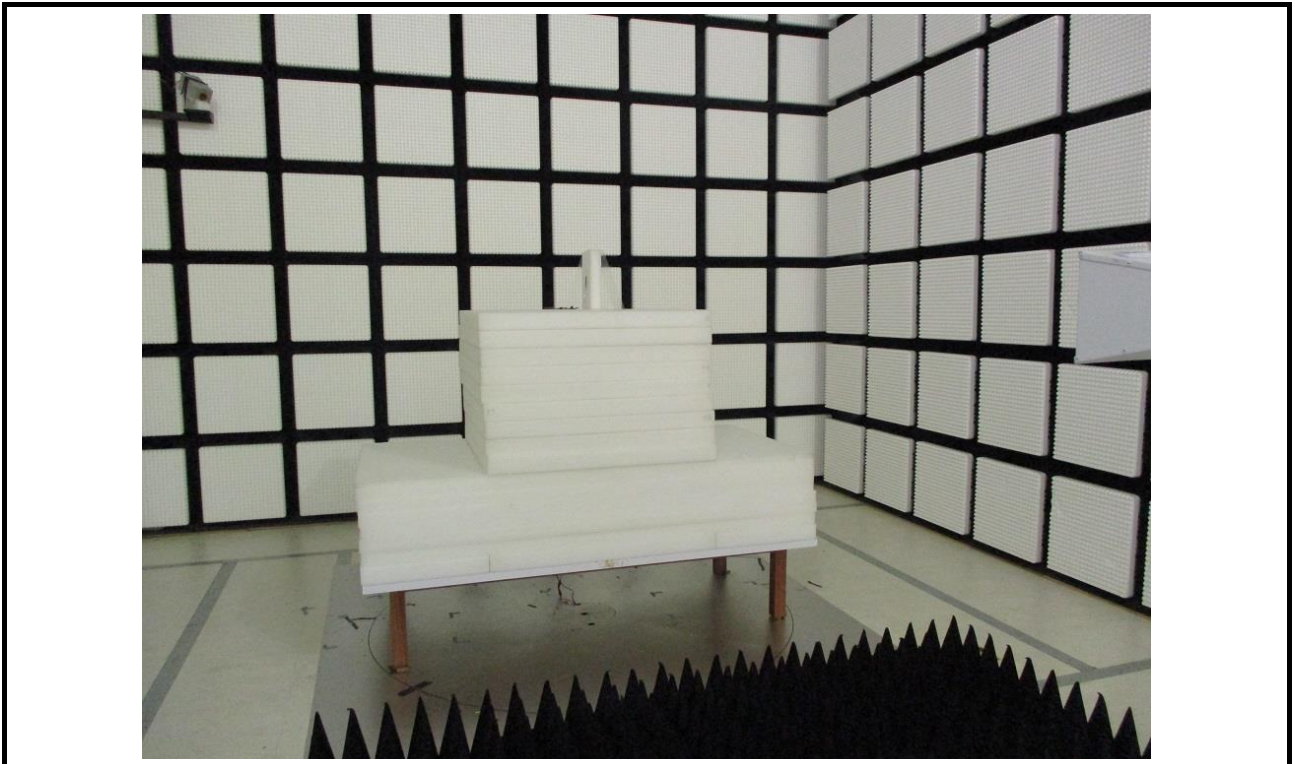
Radiated Emission above Test (Test Configuration 1)



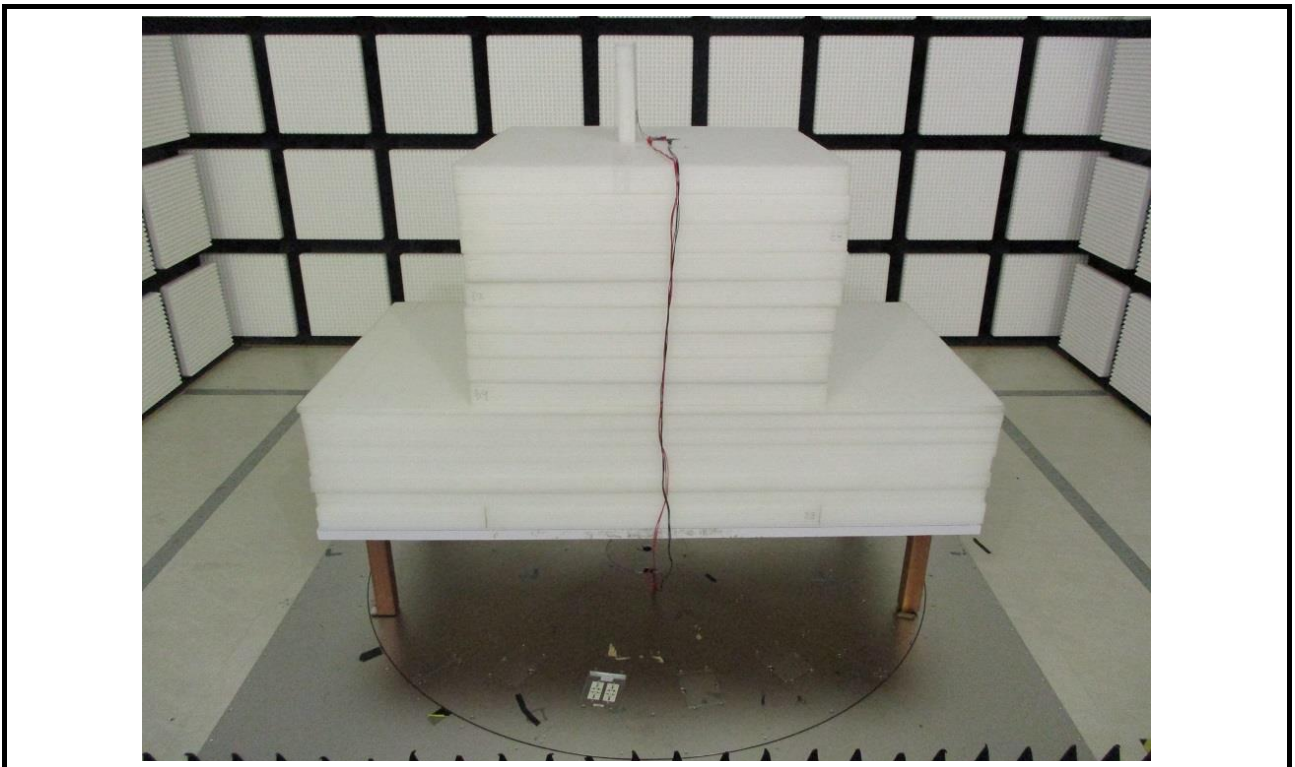
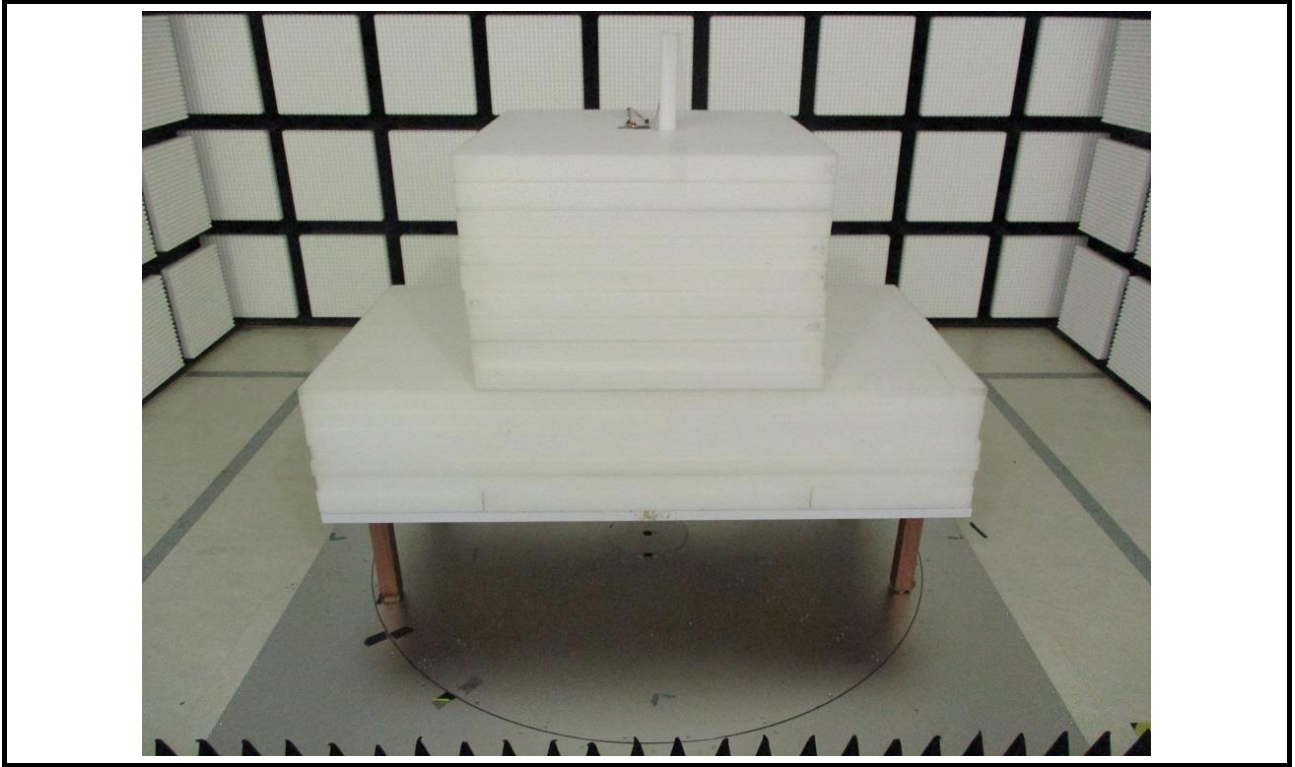
Radiated Emission above Test (Test Configuration 1)



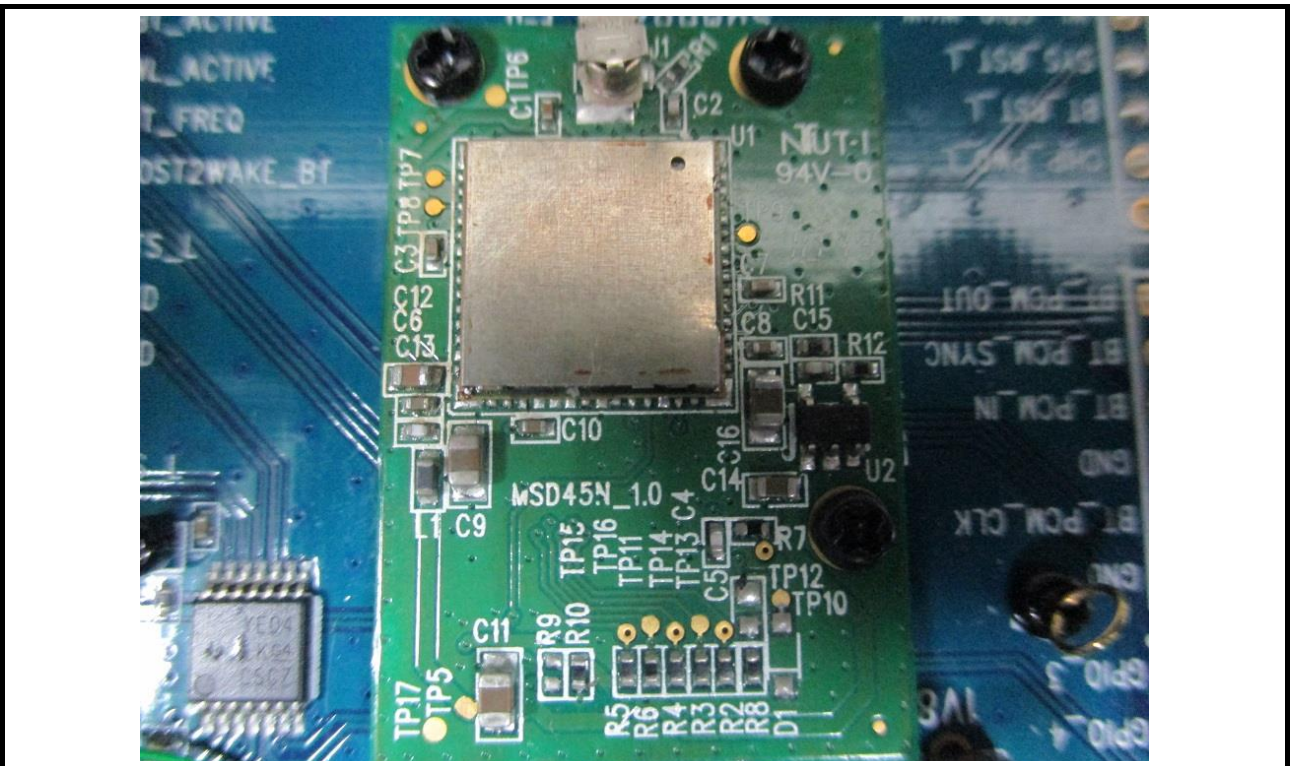
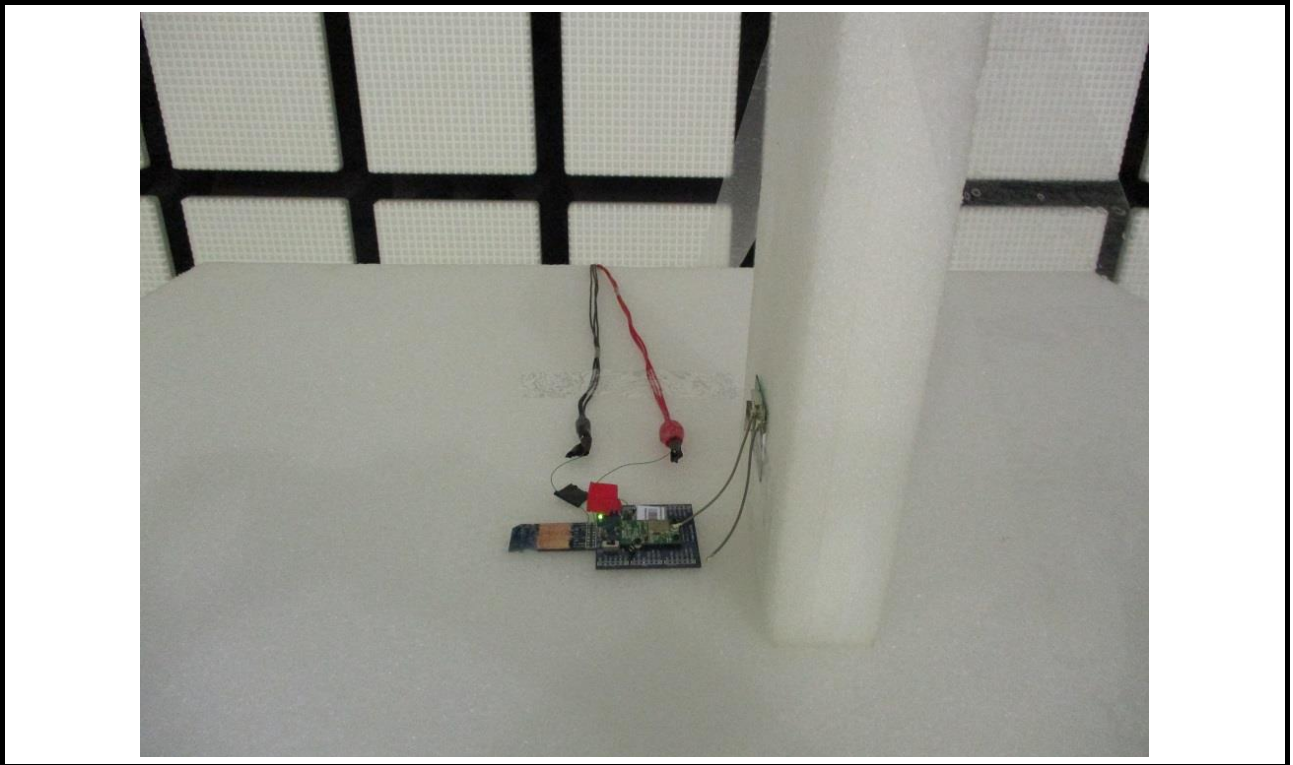
Radiated Emission above Test (Test Configuration 1)



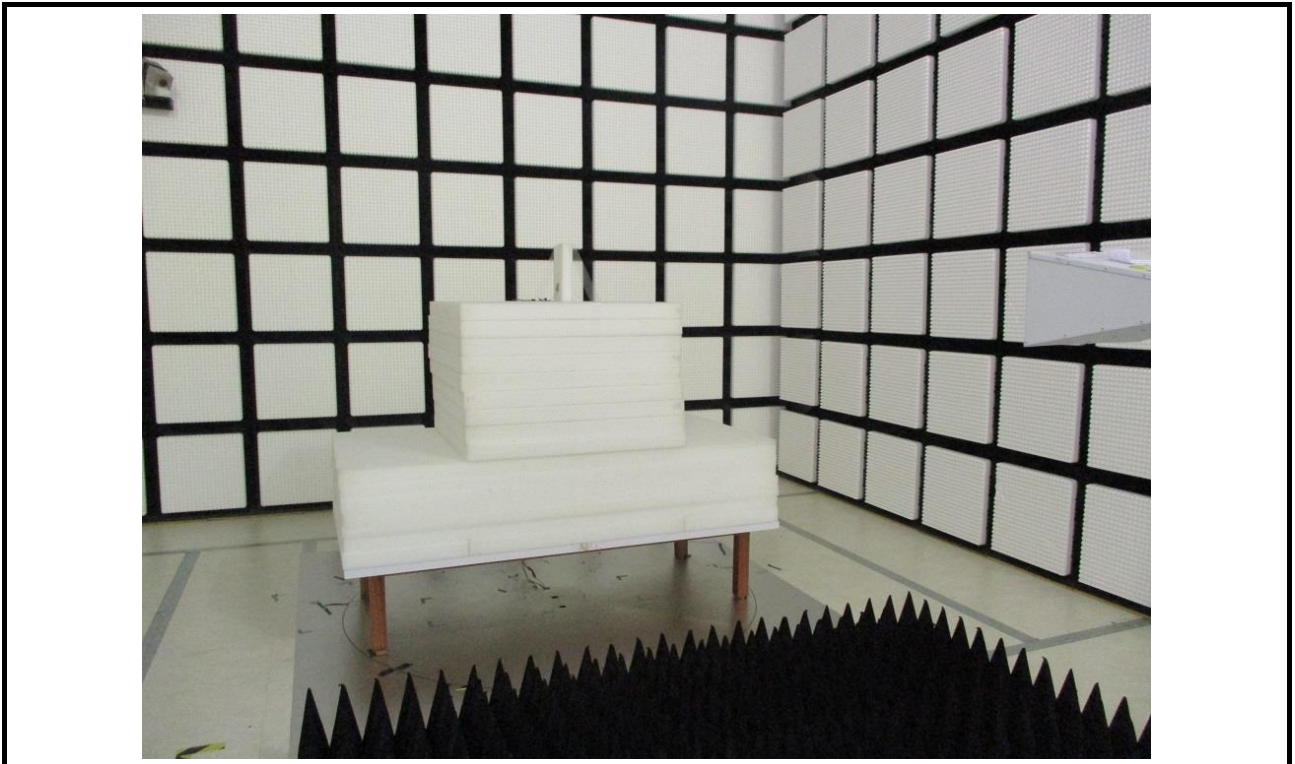
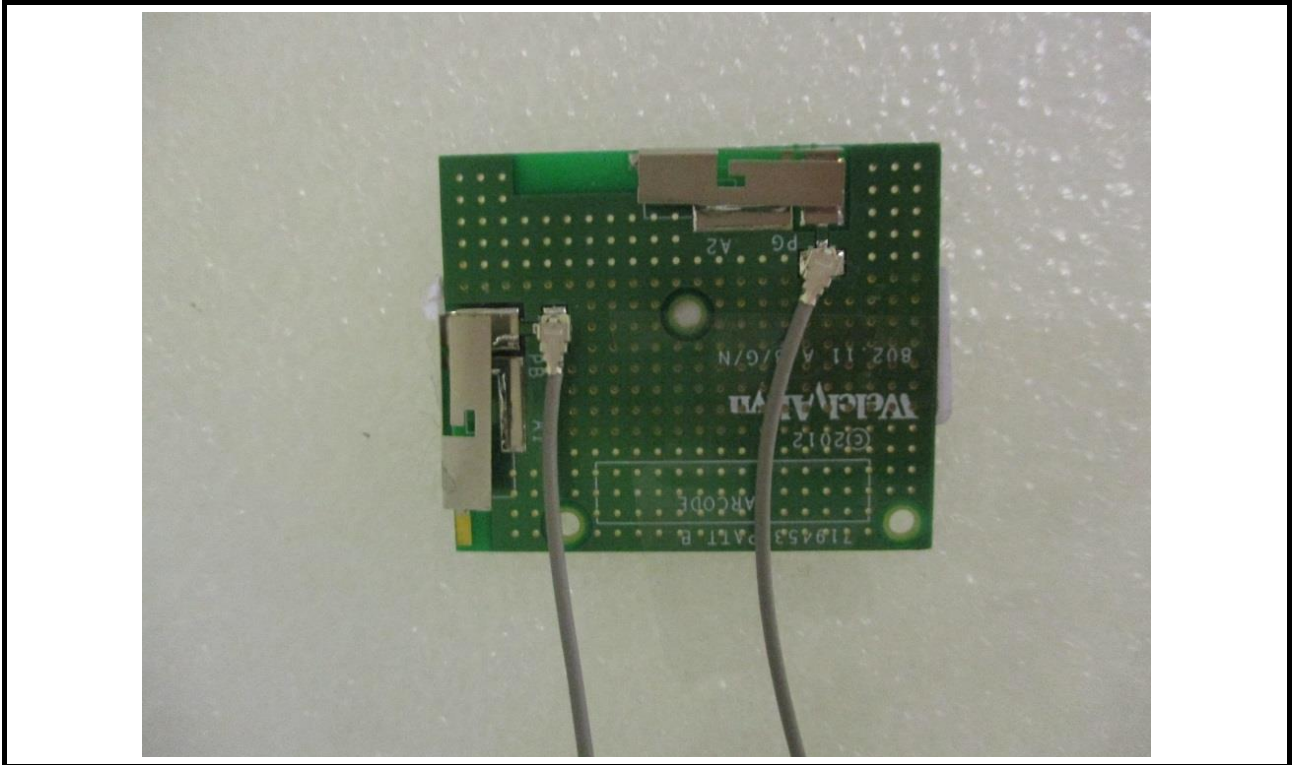
Radiated Emission above Test (Test Configuration 2)



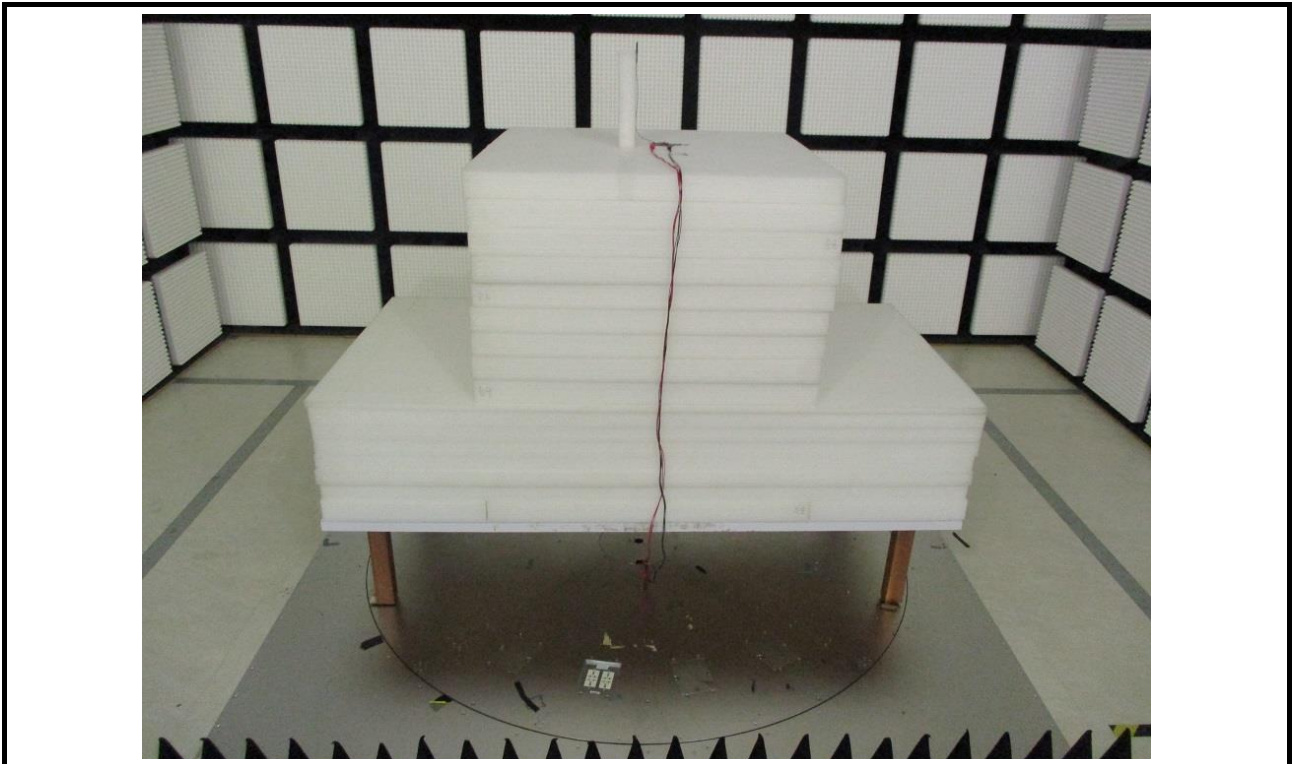
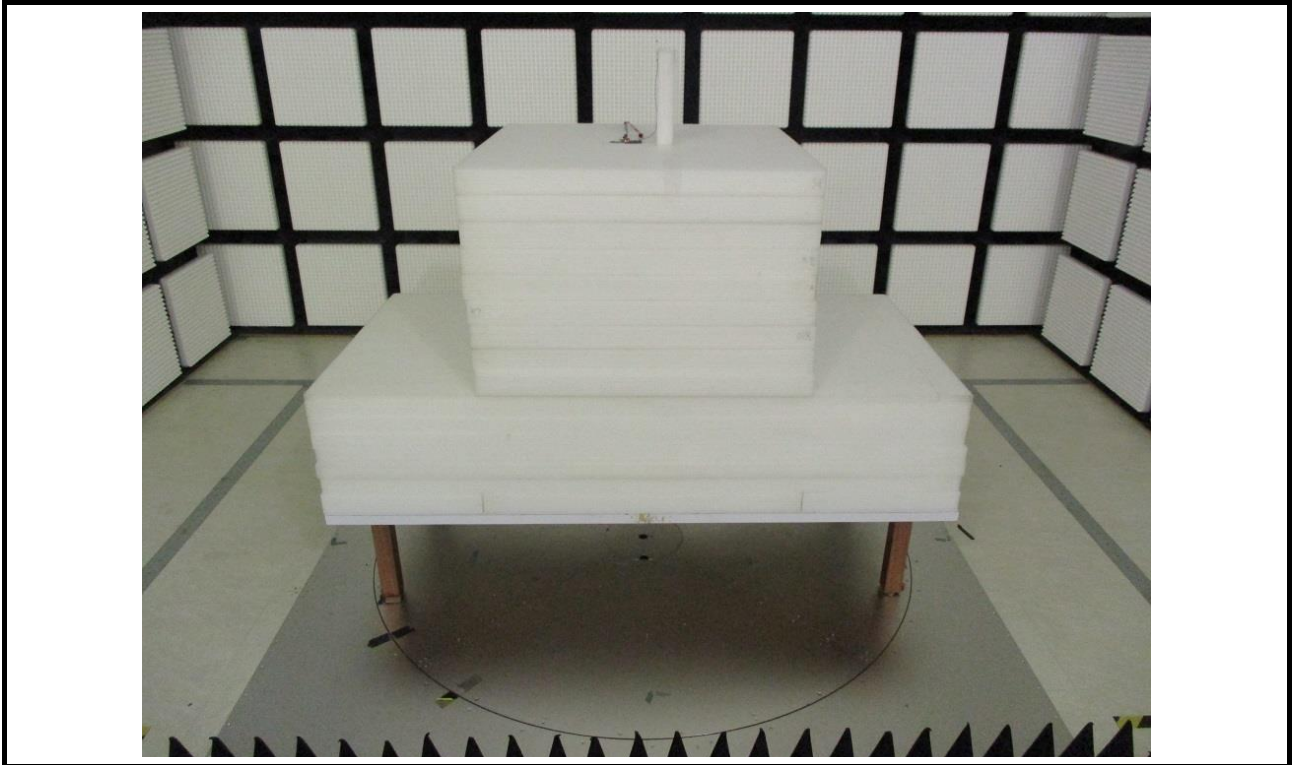
Radiated Emission above Test (Test Configuration 2)



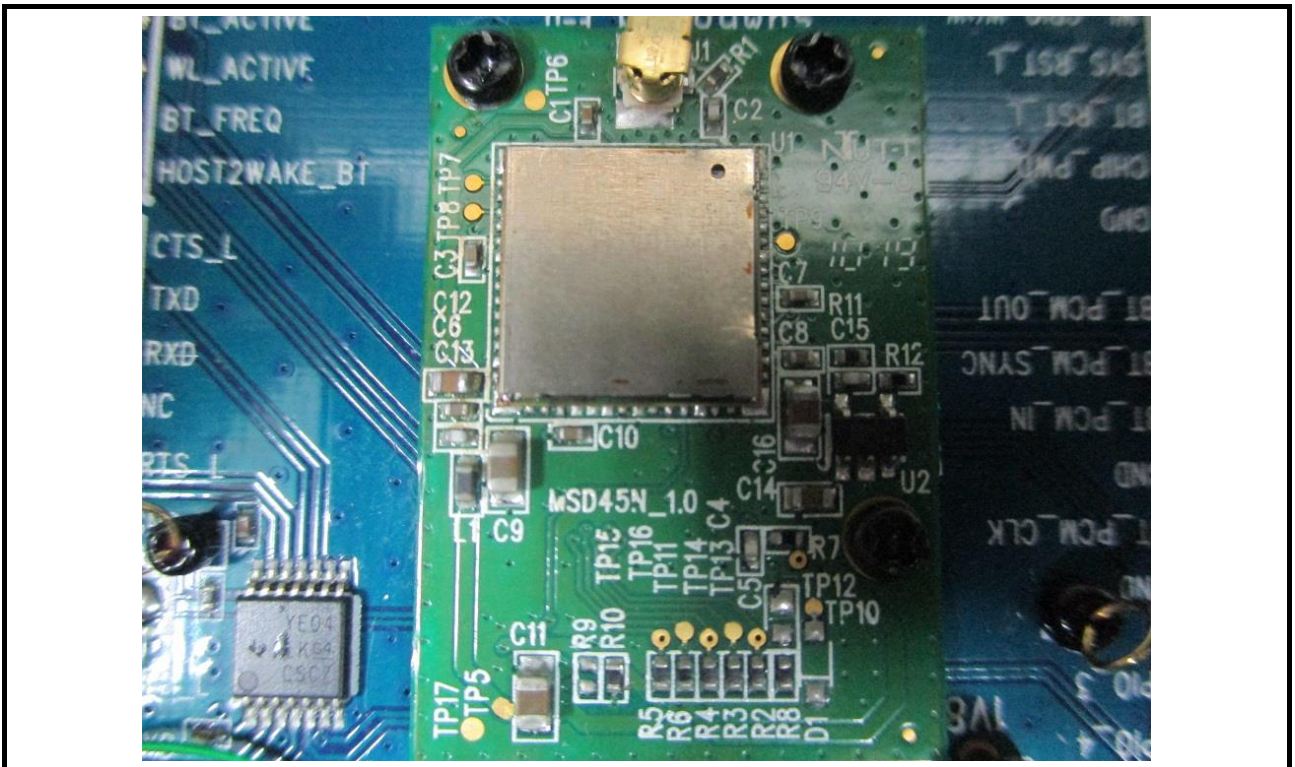
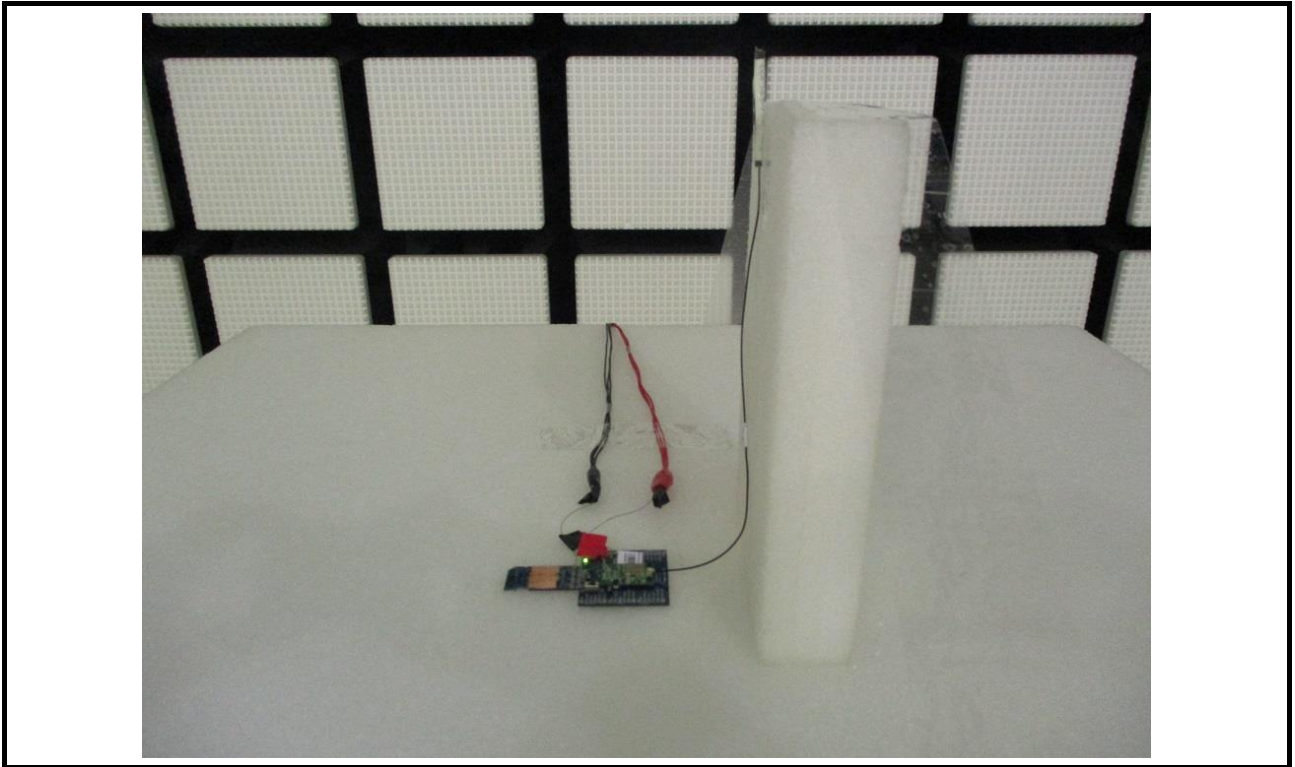
Radiated Emission above Test (Test Configuration 2)



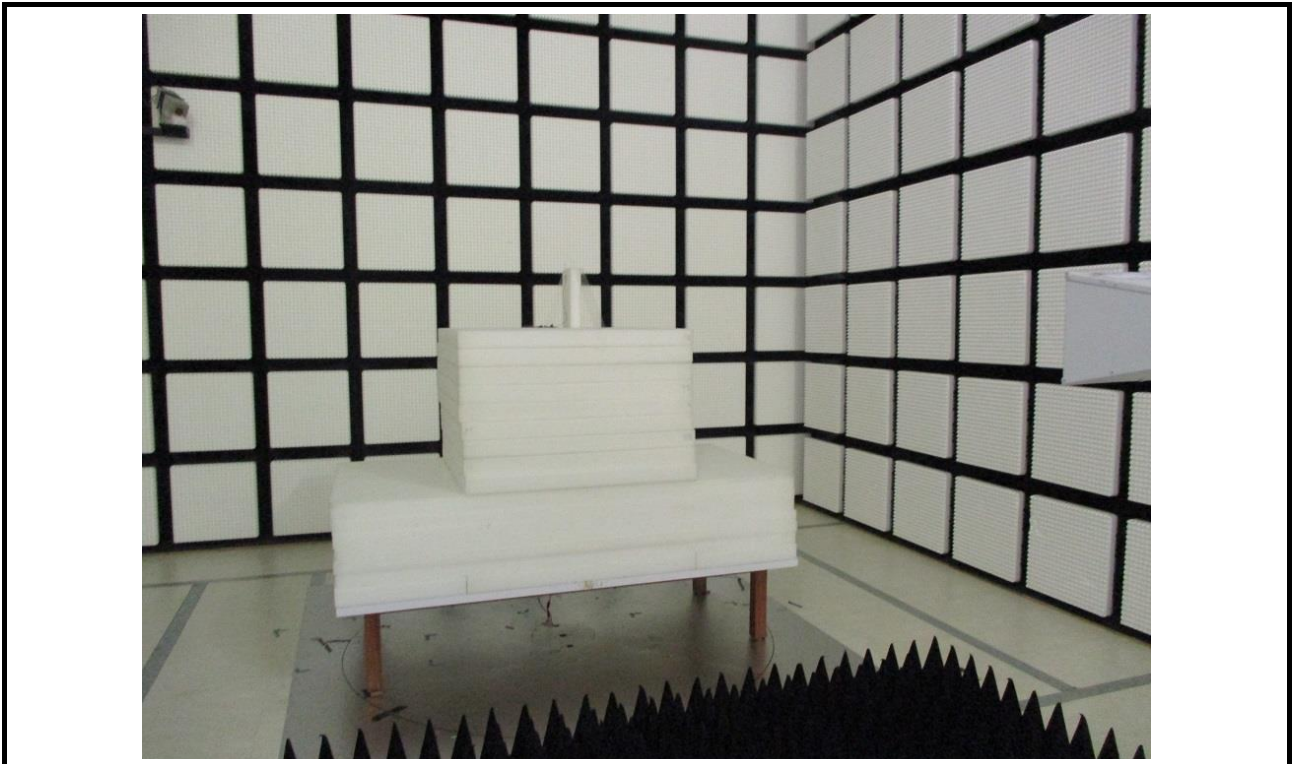
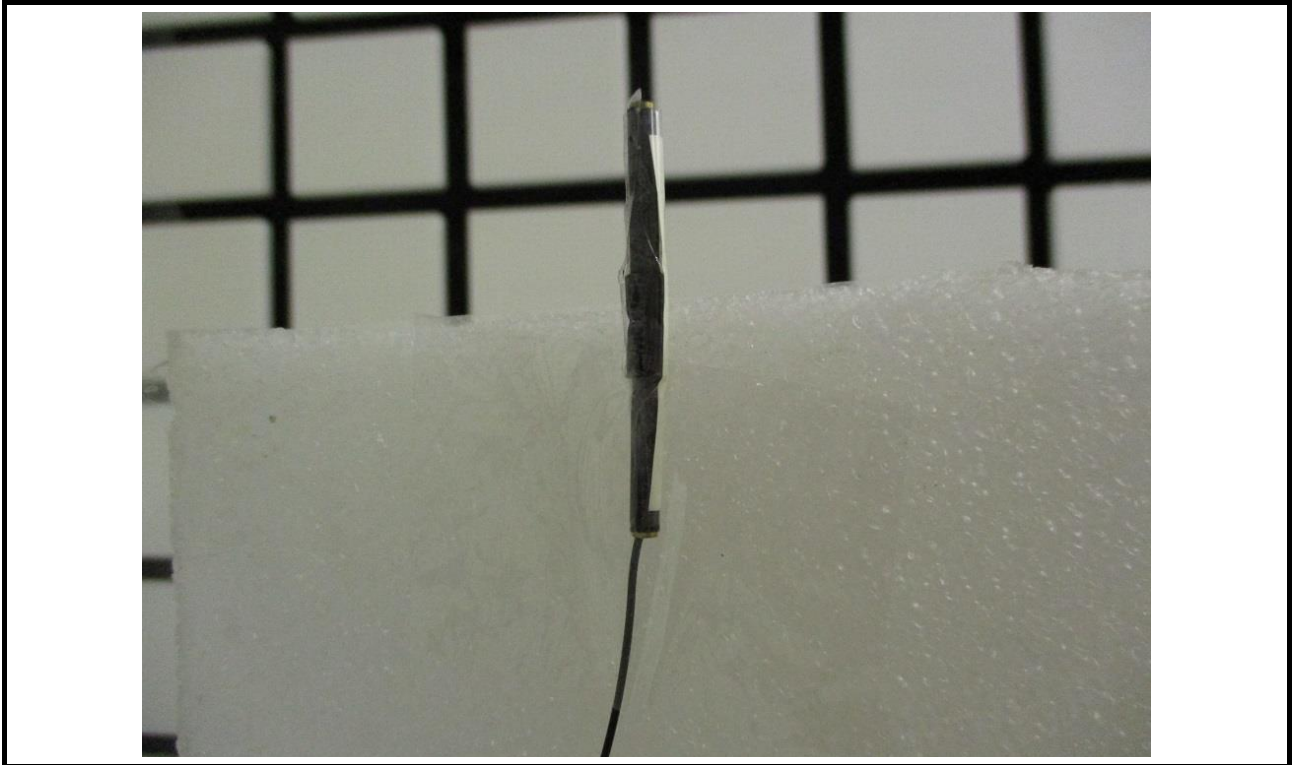
Radiated Emission above Test (Test Configuration 3)



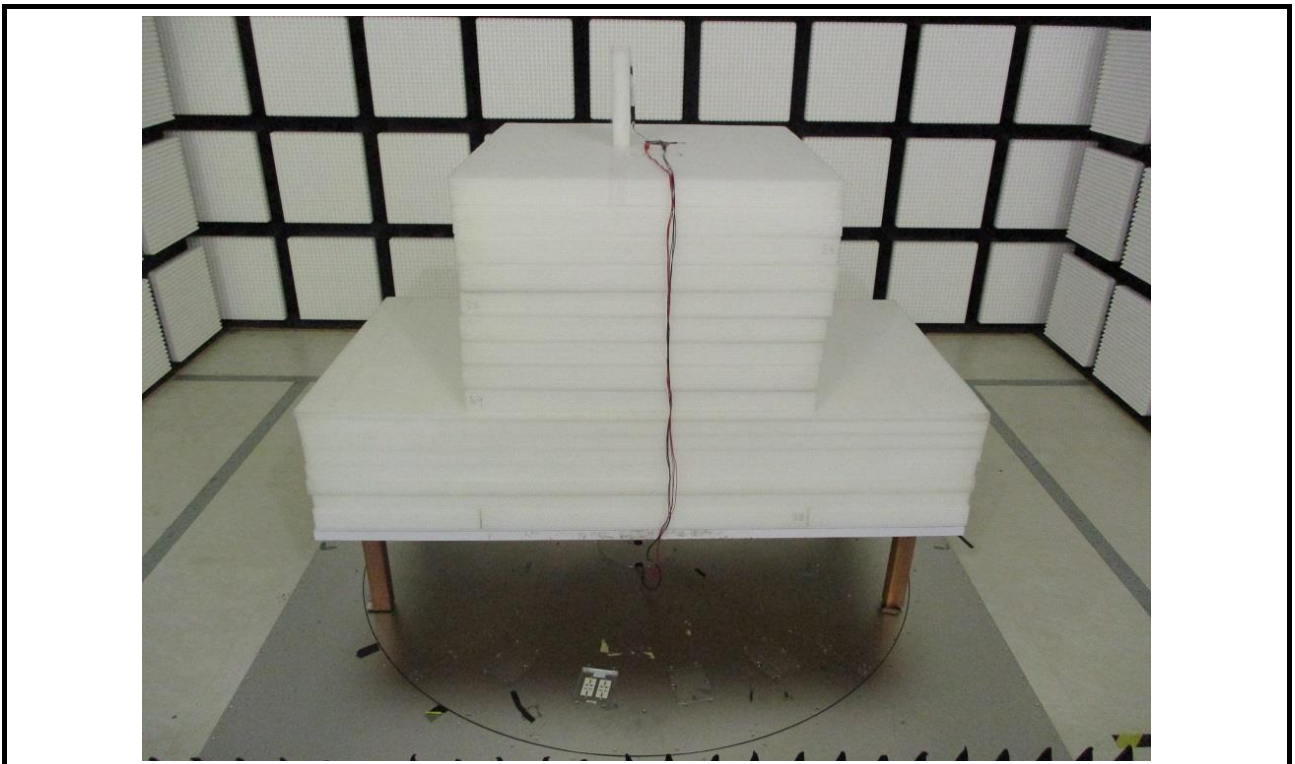
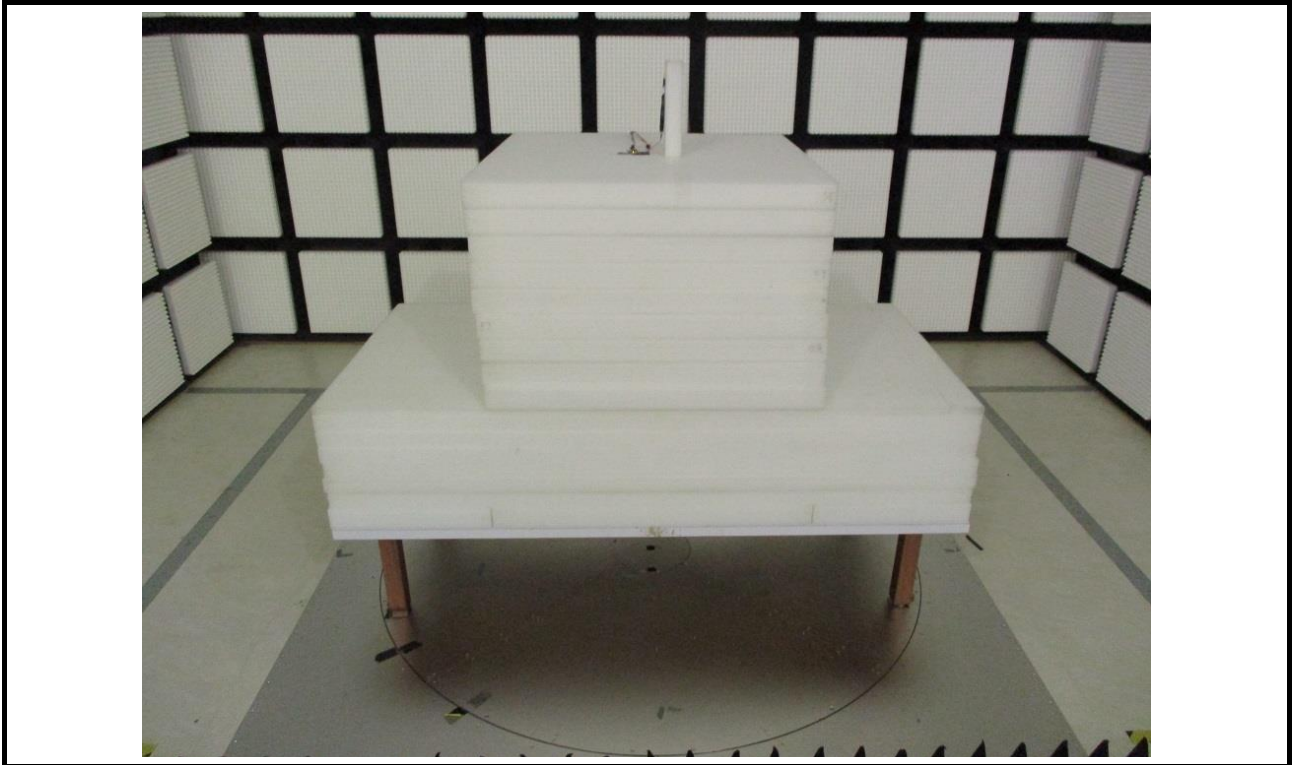
Radiated Emission above Test (Test Configuration 3)



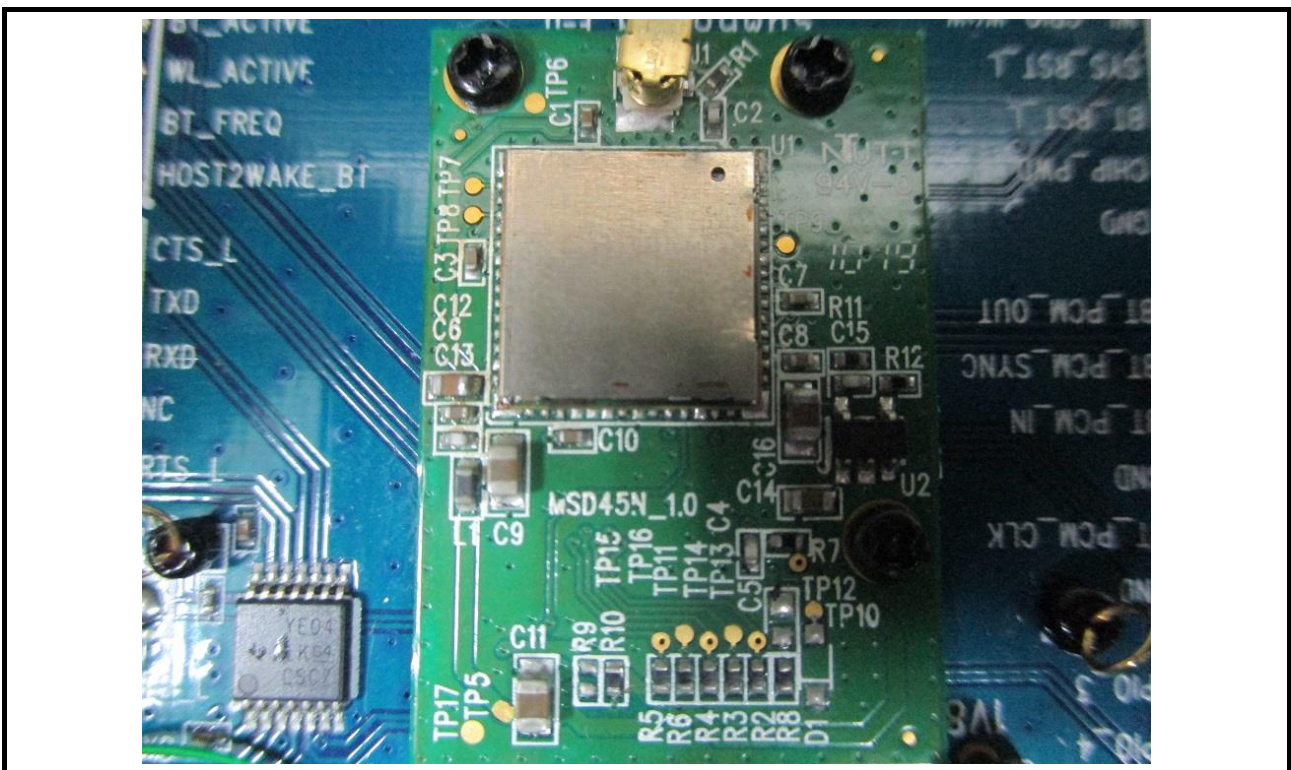
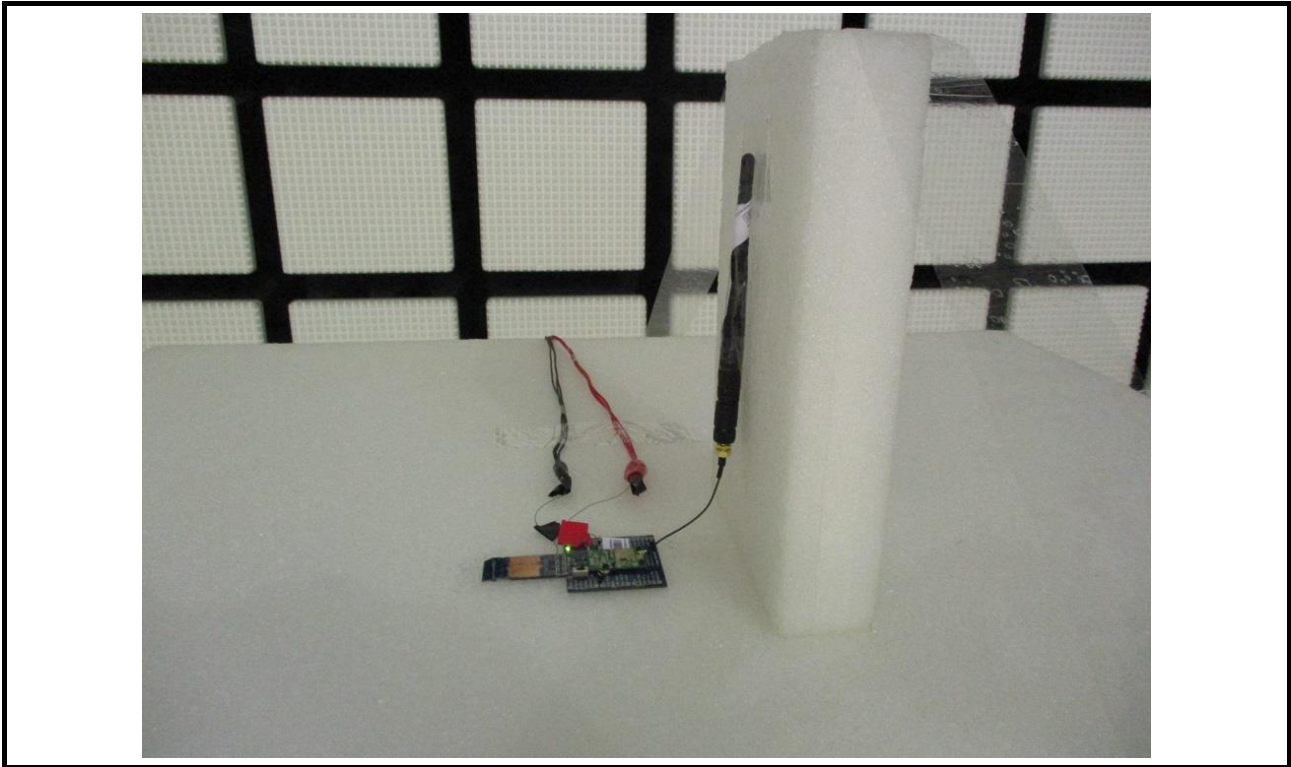
Radiated Emission above Test (Test Configuration 3)



Radiated Emission above Test (Test Configuration 4)



Radiated Emission above Test (Test Configuration 4)



Radiated Emission above Test (Test Configuration 4)

