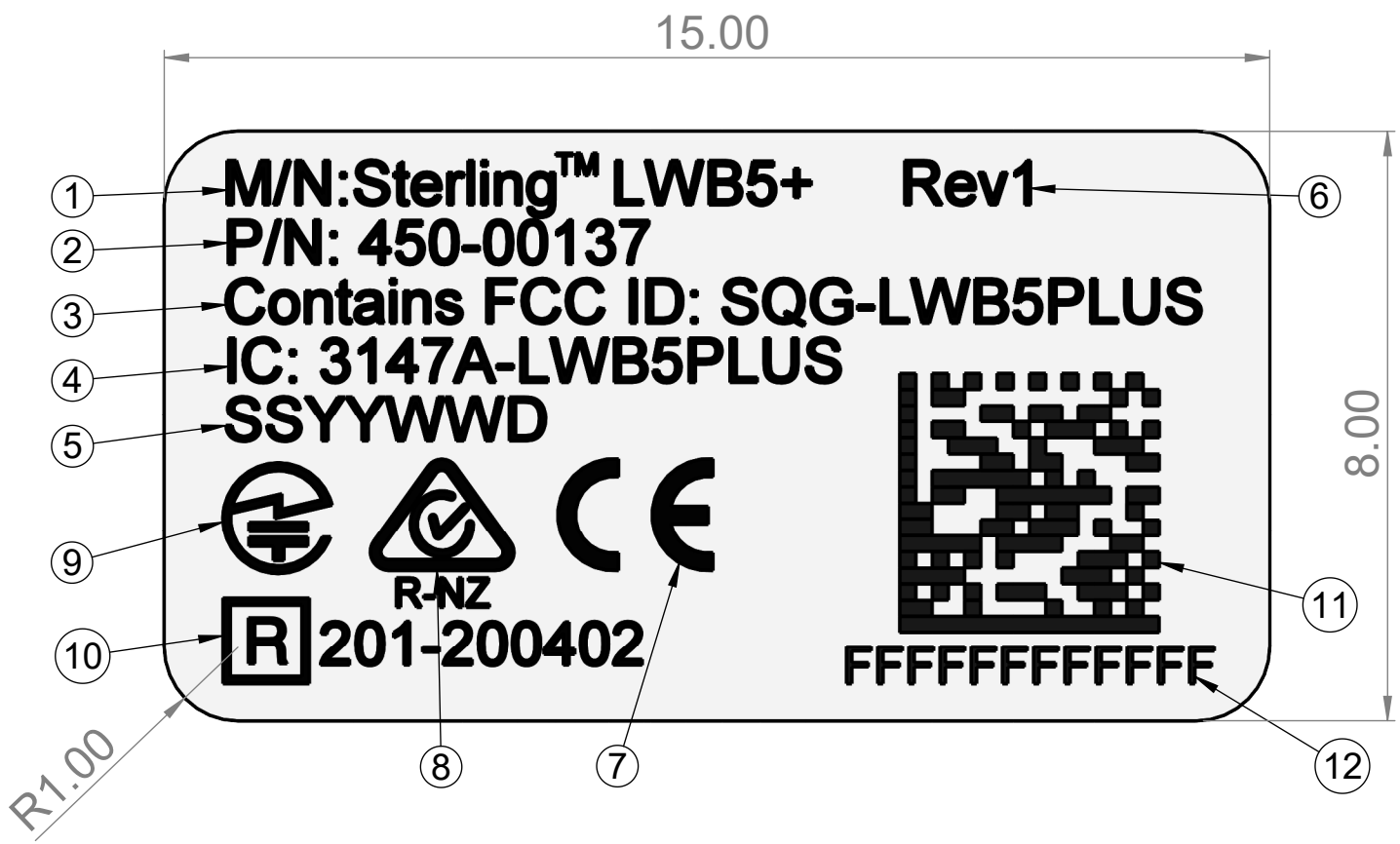


ITEM NO.	PART NUMBER	REV.	DESCRIPTION	QTY.
1	168-00081	1.0	Label Stock, PET, White, 15mm x 8mm	1

REVISIONS			
REV.	DESCRIPTION	DATE	APPROVED
1.0	Initial release	2021/3/10	CL

Note:  
 1) Font:Arial  
 2) Material:PET, Bright White

label info:  
 1) Model Name  
 2) Part Number  
 3) FCC ID  
 4) IC  
 5) Date code:SSYYWWD  
 SS: manufacturer number  
 YY: last two numbers of the year  
 WW: Week number of the year  
 D: Sun=1, Mon=2, Tue=3, Wed=4, Thu=5, Fri=6, Sat=7  
 6) Rev X:Refer to the revision on the PO.  
 7) CE logo  
 8) RCM logo  
 9) Giteki logo  
 10) Giteki ID  
 11) QR code  
 content: contain Wi-Fi MAC  
 12) MAC Address



UNLESS OTHERWISE SPECIFIED: DIMENSIONS ARE IN MILLIMETERS TOLERANCES: ANGULAR: ±.5 X.X ±.2 X.XX ±.05		CAD FILE: 160-02131	TITLE: <b>Label, Sterling LWB5+ USB Adapter, 15mm x 8mm</b>	
INTERPRET GEOMETRIC TOLERANCING PER: ASME 14.5M		DATE: 2021/3/10	SIZE: <b>B</b>	DWG. NO.: <b>160-02131</b>
THIRD ANGLE PROJECTION		SHEET 1 OF 1	SCALE: 10:1	REV: <b>1.0</b>

THIRD ANGLE PROJECTION

UNLESS OTHERWISE NOTED, THIS DOCUMENT CONTAINS LAIRD CONNECTIVITY INFORMATION. REPRODUCTION, USE, DISCLOSURE OR TRANSMITTAL OF ALL OR ANY PART OF THIS DOCUMENT IS PROHIBITED EXCEPT TO THE EXTENT APPROVED IN WRITING BY AN AUTHORIZED REPRESENTATIVE OF LAIRD CONNECTIVITY. LAIRD CONNECTIVITY RESERVES ALL RIGHTS UNDER PATENTS, TRADEMARKS, COPY RIGHTS AND TRADE SECRETS. COPYRIGHT, LAIRD CONNECTIVITY 2020, ALL RIGHTS RESERVED.



Contains FCC ID: SQG-LWB5PLUS  
Contains IC: 3147A-LWB5PLUS