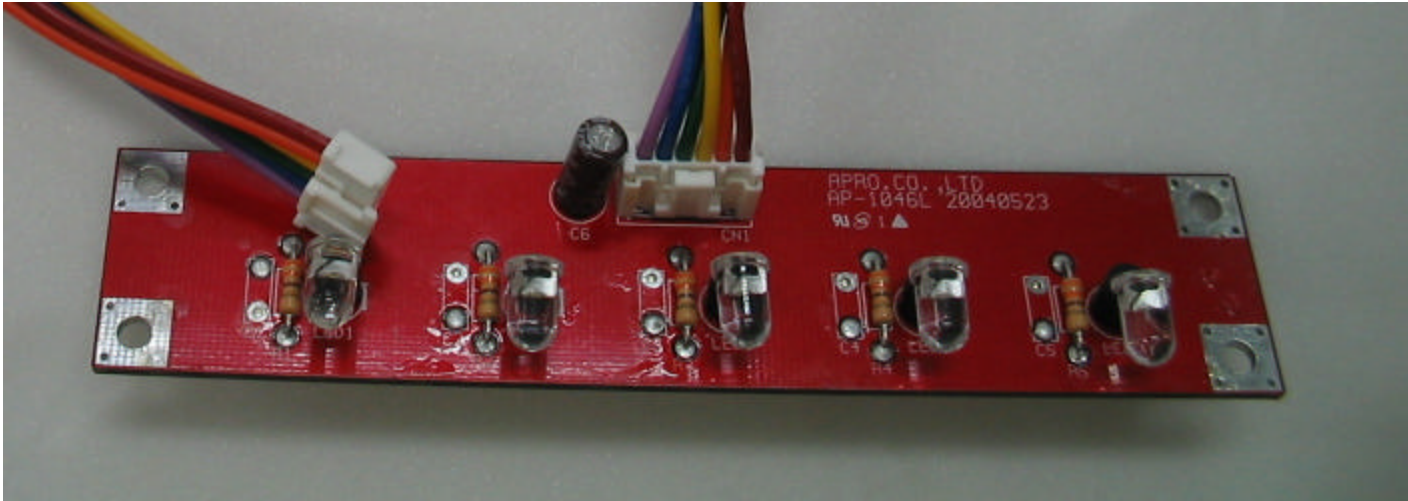
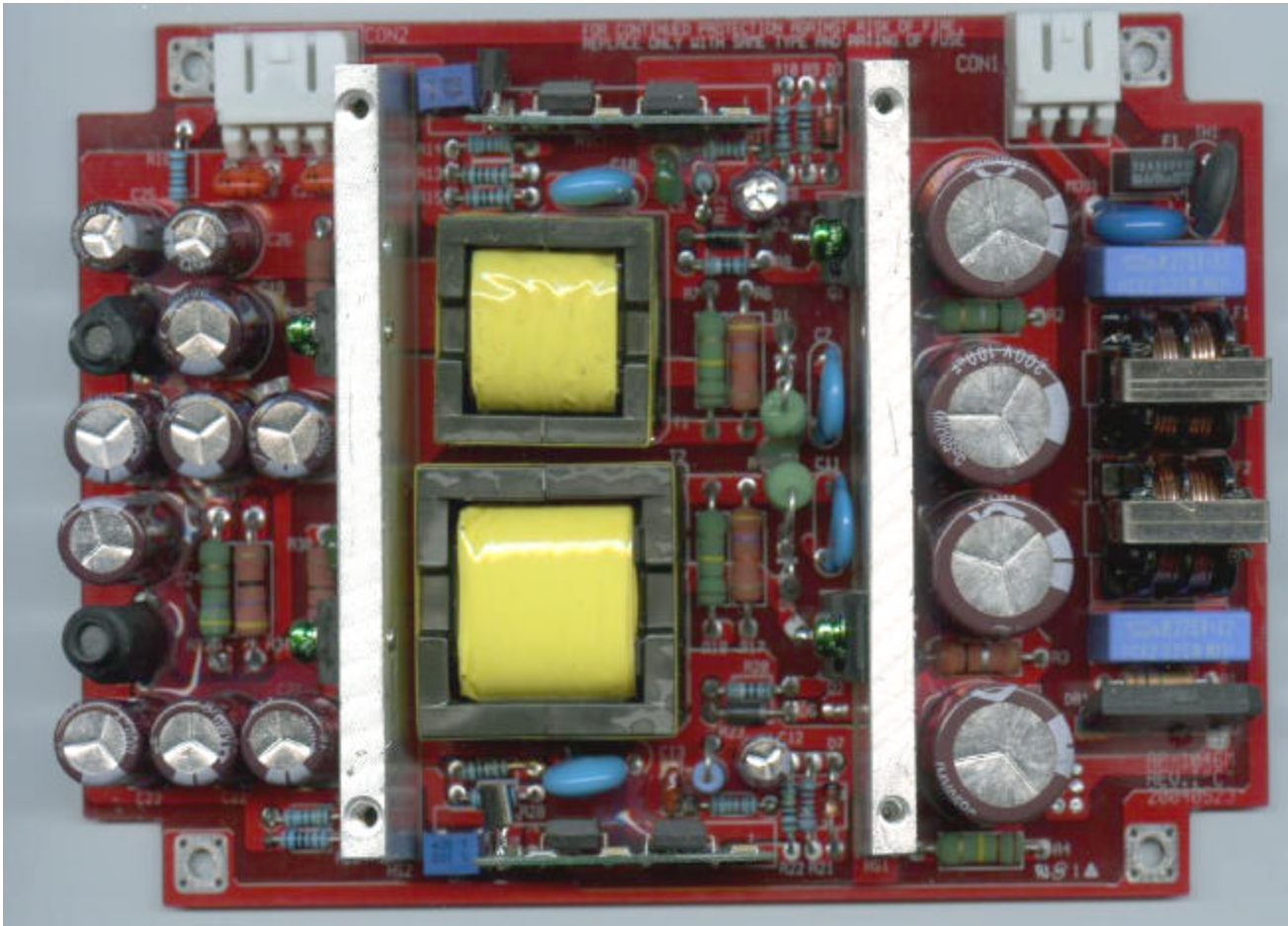




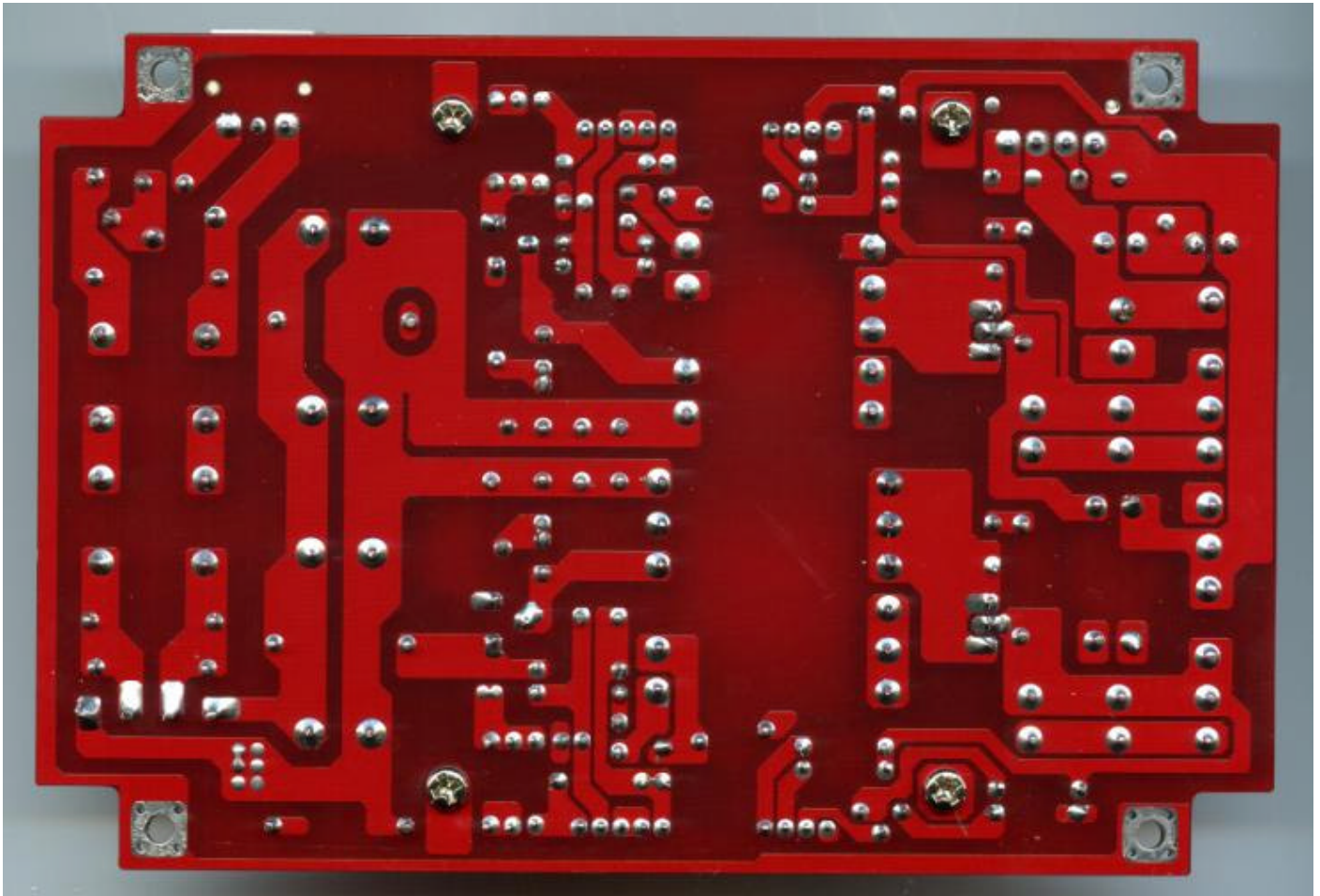
LED PCB bottom



LED PCB top



Power supply PCB top

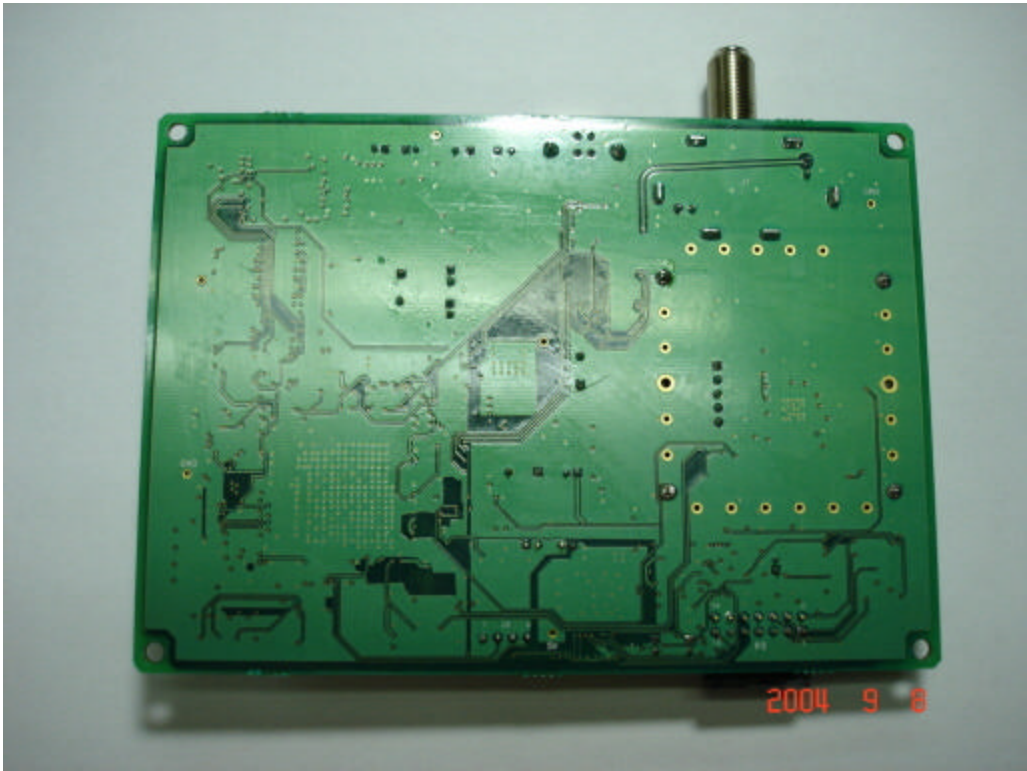


Power supply PCB bottom

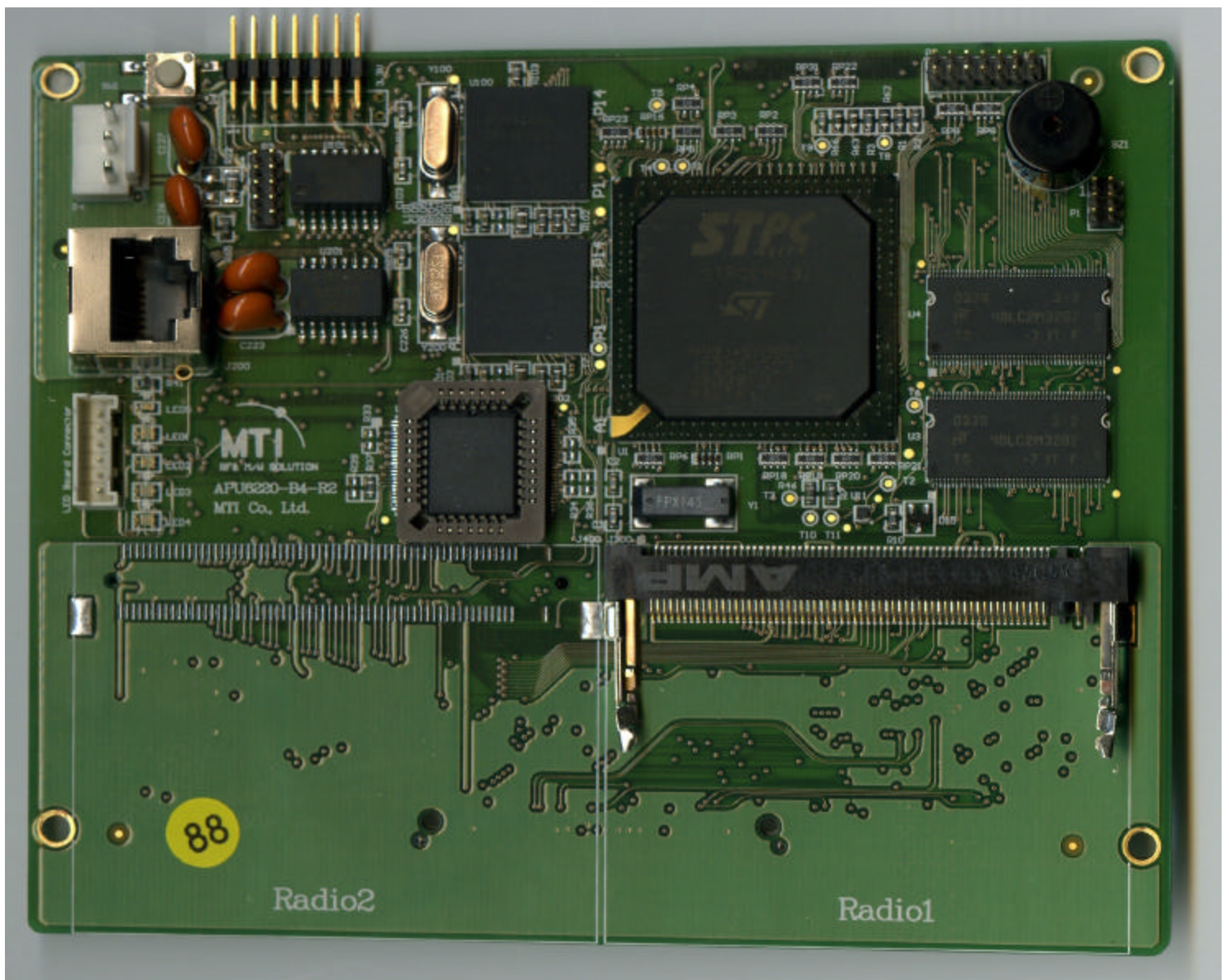


Cable modem PCB top



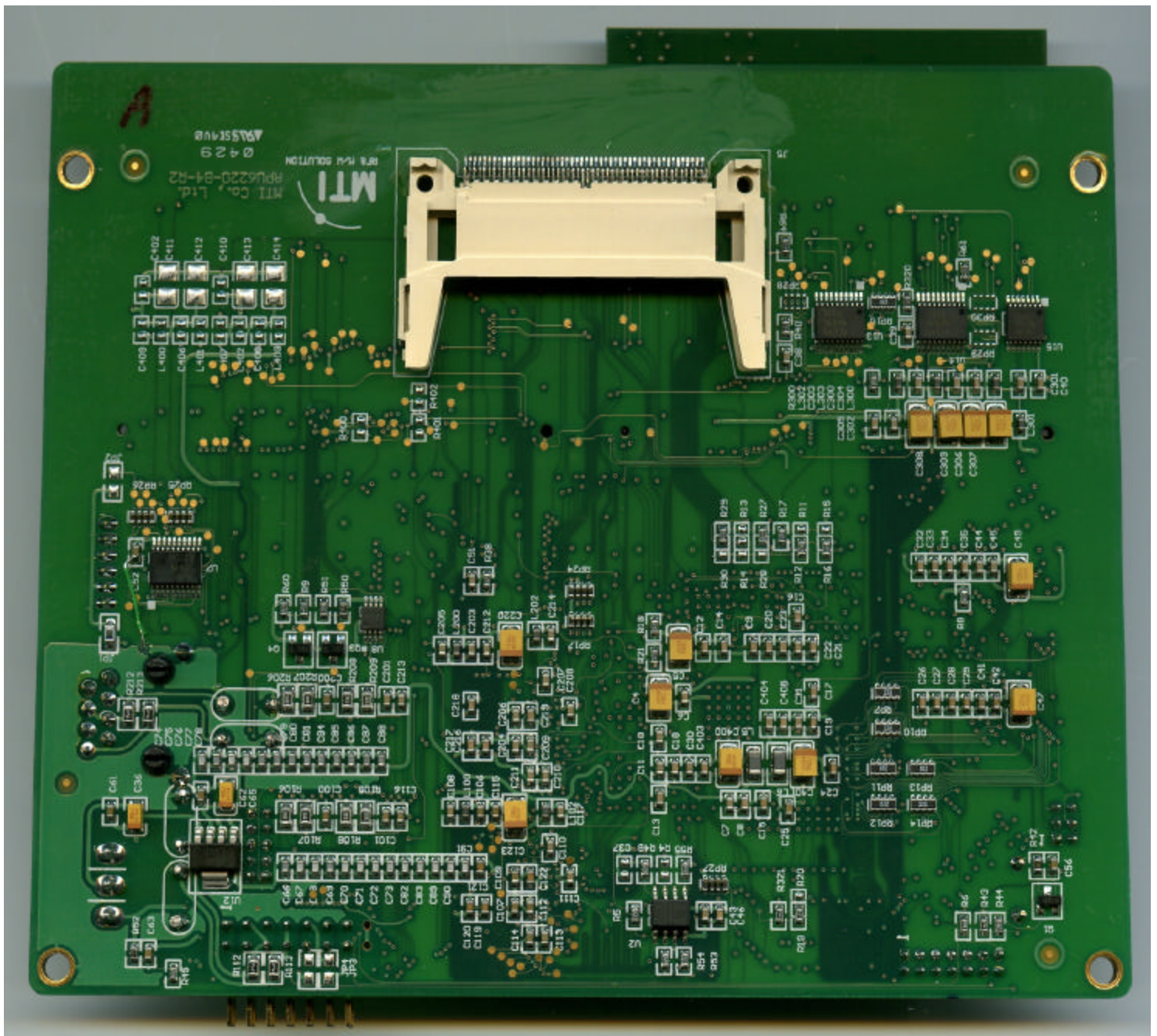


Cable modem PCB bottom



Access Point PCB top

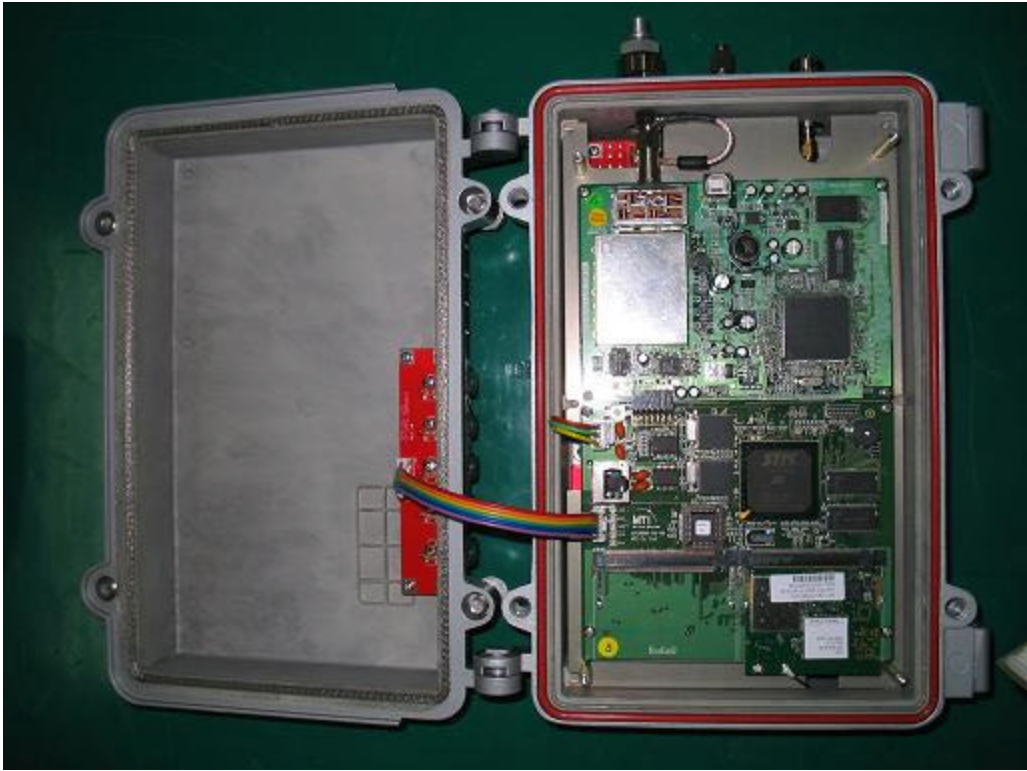




Access Point PCB bottom

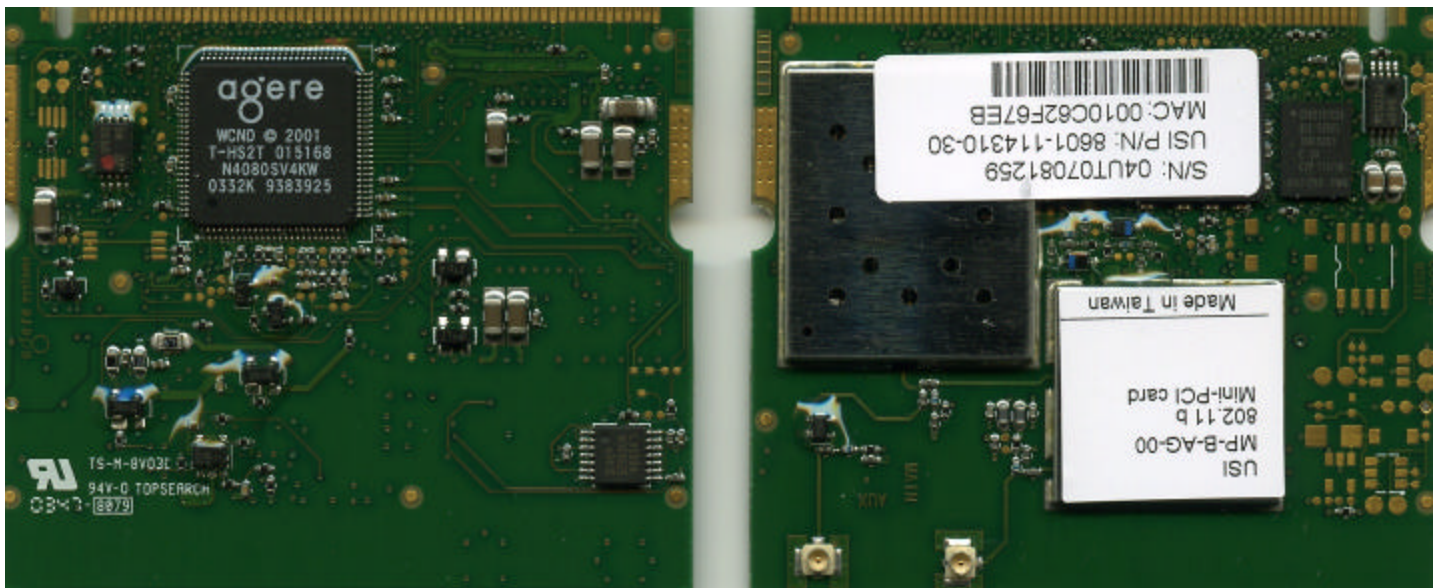


Opened APU

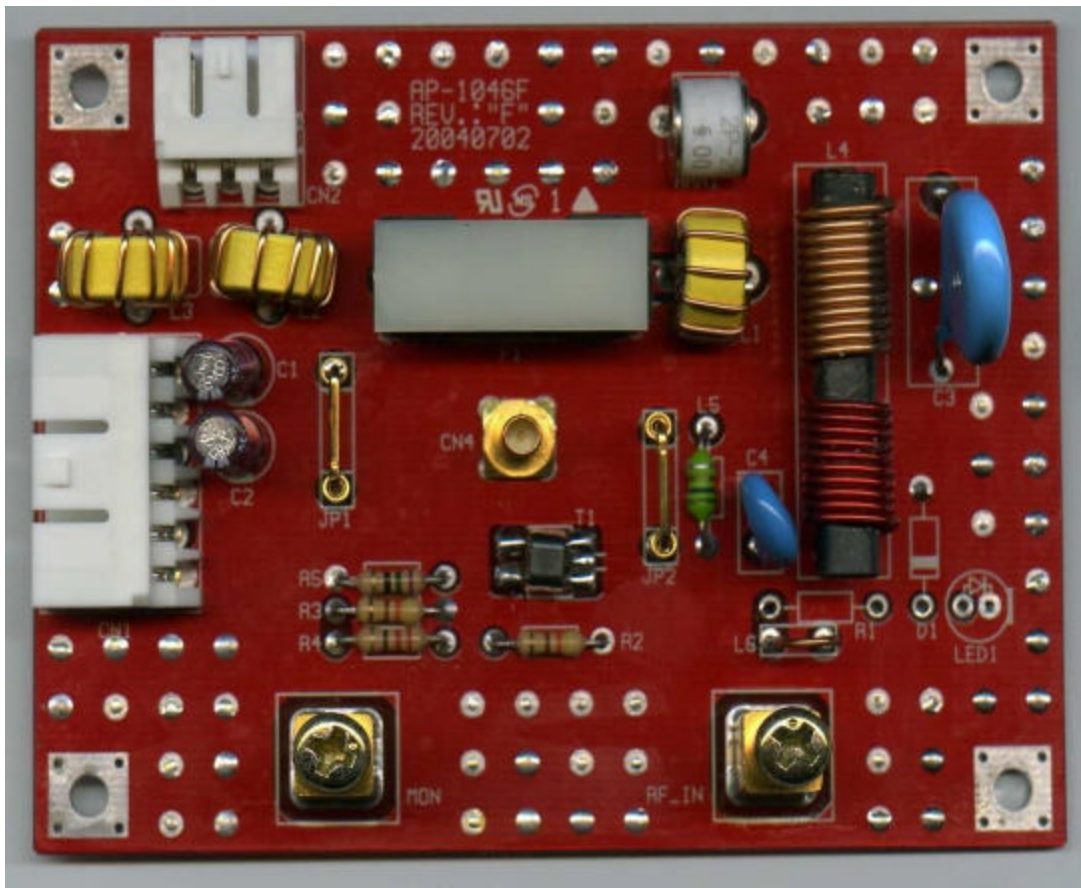


Opened APU with removed metal panel

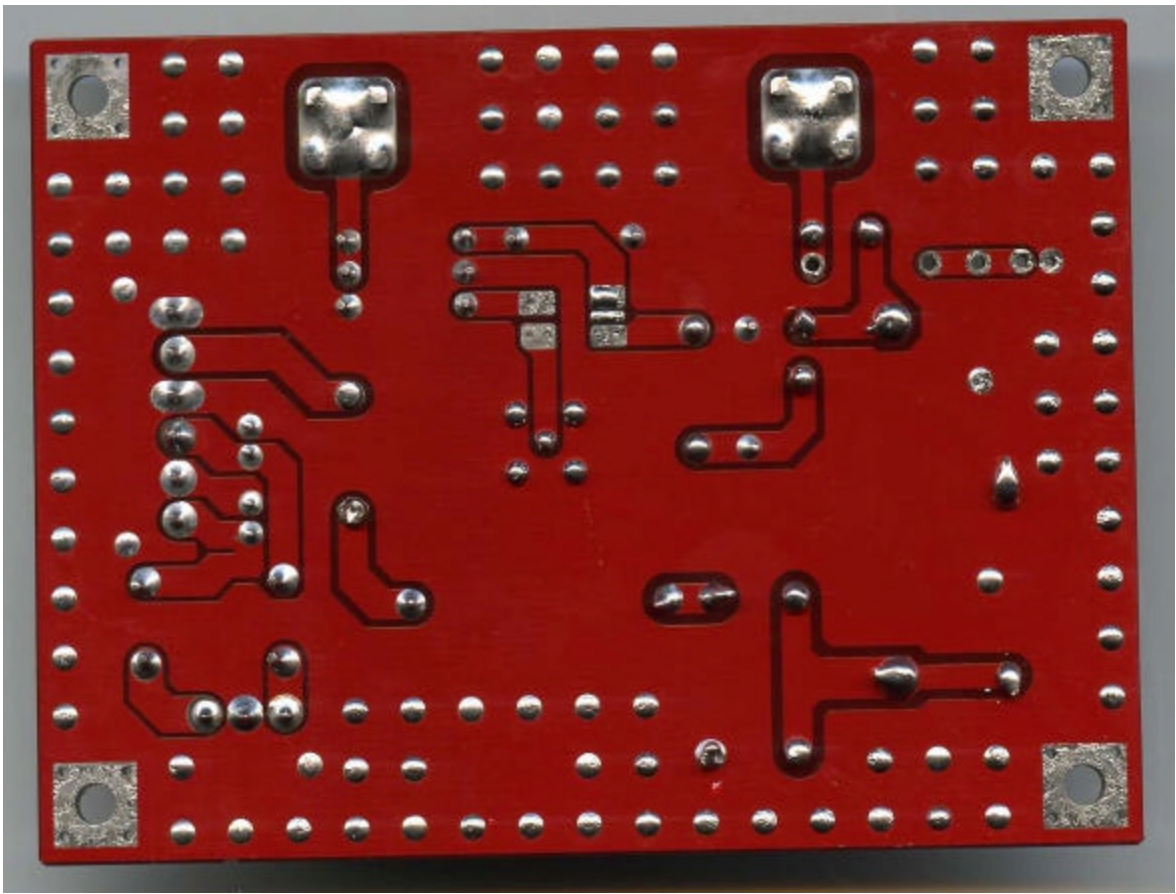




WLAN radio PCB top and bottom

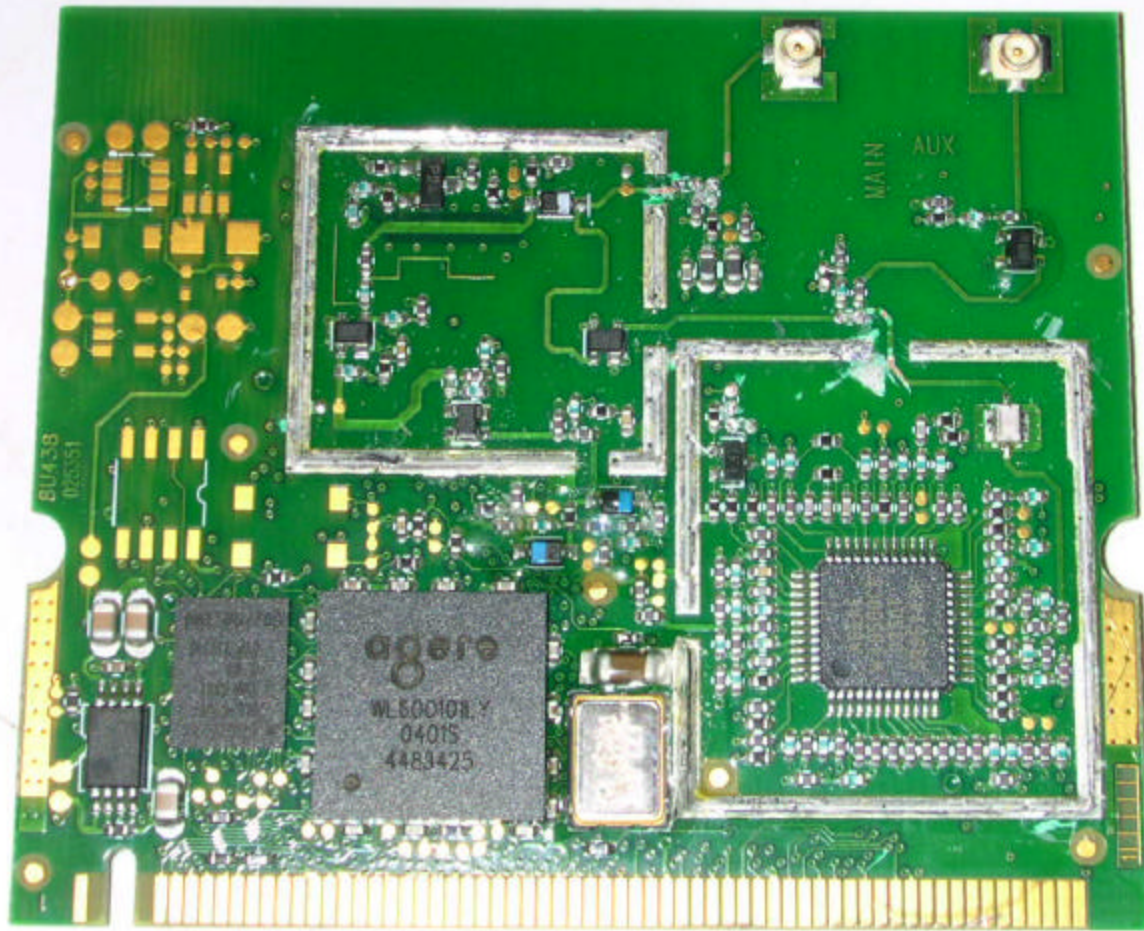


HFC PCB top



HFC PCB bottom





WLAN Radio PCB (with shield covers removed)